


Catechol-O-Methyltransferase Val158Met Polymorphism on Striatum Structural Covariance Networks in Alzheimer's Disease

Chiung-Chih Chang¹  · Shih-Jen Tsai^{2,3} · Nai-Ching Chen¹ · Chi-Wei Huang¹ · Shih-Wei Hsu⁴ · Ya-Ting Chang¹ · Mu-En Liu² · Wen-Neng Chang¹ · Wan-Chen Tsai¹ · Chen-Chang Lee⁴

Received: 21 January 2017 / Accepted: 20 June 2017 / Published online: 13 July 2017
© The Author(s) 2017. This article is an open access publication

Abstract The catechol-O-methyltransferase enzyme metabolizes dopamine in the prefrontal axis, and its genetic polymorphism (rs4680; Val158Met) is a known determinant of dopamine signaling. In this study, we investigated the possible structural covariance networks that may be modulated by this functional polymorphism in patients with Alzheimer's disease. Structural covariance networks were constructed by 3D T1 magnetic resonance imaging. The patients were divided into two groups: Met-carriers ($n = 91$) and Val-homozygotes ($n = 101$). Seed-based analysis was performed focusing on triple-network models and six striatal networks. Neurobehavioral scores served as the major outcome factors. The role of seed or peak cluster volumes, or a covariance strength showing Met-carriers > Val-homozygotes were tested for the effect on dopamine. Clinically, the Met-carriers had higher mental manipulation and hallucination scores than the Val-homozygotes. The volume-score correlations suggested the significance of the putaminal seed in the

Met-carriers and caudate seed in the Val-homozygotes. Only the dorsal-rostral and dorsal-caudal putamen interconnected peak clusters showed covariance strength interactions (Met-carriers > Val-homozygotes), and the peak clusters also correlated with the neurobehavioral scores. Although the triple-network model is important for a diagnosis of Alzheimer's disease, our results validated the role of the dorsal-putaminal-anchored network by the catechol-O-methyltransferase Val158Met polymorphism in predicting the severity of cognitive and behavior in subjects with Alzheimer's disease.

Keywords Alzheimer's disease · Anatomical structural covariance · Default mode network · Genetic effect · Striatal network · Posterior cingulate cortex

Electronic supplementary material The online version of this article (doi:10.1007/s12035-017-0668-2) contains supplementary material, which is available to authorized users.

✉ Chiung-Chih Chang
neur099@adm.cgmh.org.tw

- ¹ Department of Neurology, Cognition and Aging Center, Kaohsiung Chang Gung Memorial Hospital, Chang Gung University College of Medicine, #123, Ta-Pei Road, Niasung, Kaohsiung 833, Taiwan
- ² Psychiatric Department, Taipei Veterans General Hospital, Taipei, Taiwan
- ³ Psychiatric Division, School of Medicine, National Yang-Ming University, Taipei, Taiwan
- ⁴ Department of Radiology, Kaohsiung Chang Gung Memorial Hospital, Chang Gung University College of Medicine, Kaohsiung, Taiwan

Introduction

Dopamine pathways modulate learning, memory, and neuropsychiatric presentations, and the catechol-O-methyltransferase (COMT) gene has been implicated in the enzymatic degradation of dopamine. In humans, a functional single nucleotide polymorphism (rs4680 G to A), consisting of a change in the coding exon at position 158 (Val158Met), has been reported to result in a two- to fourfold decrease in the activity of the COMT enzyme. Consequently, the low enzyme activity in Met/Met homozygotes results in increased dopamine levels that may preferentially affect prefrontal-related tasks [1].

Although the hypothesis of dopamine dysfunction in the early stage of Alzheimer's disease (AD) is still under debate, several experimental models support the role of A β oligomers and dopamine dysfunction [2]. In addition, a recent meta-analysis suggested that COMT Val158Met Val/Val alleles were associated with an increased risk of AD in Asians [3].

In Taiwan, Wang et al. [4] found that the Val/Val genotype and apolipoprotein E4 (ApoE4) allele exert a synergistic effect on the risk of AD. An association of the rs4680 polymorphism with susceptibility to AD through a synergistic effect with ApoE4 alleles has also been reported in Caucasian [5] and Basque populations [6]. In AD, the COMT genotype has been shown to play a major role in the presentation of psychosis [7] and cognitive profiles [8]. Other studies, however, suggest no direct link between Val158Met and susceptibility to AD in the general population [3, 5, 9]. In Akil et al.'s study, pathological specimens of normal human brains [10] from individuals with the Val/Val genotype may have had higher levels of thyroxylase messenger RNA (mRNA) in mesencephalic dopamine neuronal populations projecting to the striatum. However, whether the higher levels of striatal dopamine can compensate for the lower dopamine concentration in the prefrontal cortex is unclear, and the mechanism by which the presentations are related to distinct network alterations remains to be explored.

The dopamine pathway represents one of the major biochemical signals in the striatum. Classically regarded as a motor structure, the striatum subserves a wide range of functions including cognitive, motivational, and emotional processes. In recent years, researchers have started to conceptualize the functional connectivity of distinct neural circuits associated with different sub-regions of the striatum. For instance, the reward-related function has been attributed to the ventral versus superior striatum [11]. Similarly, executive dysfunction has been reported in patients with putamen and caudate damage [12, 13]. Changes in the anatomical connections within the fronto-striatal circuits are related to syndrome complexes in the neurodegenerative spectrum. In AD, there may be lesser striatal atrophy, but the AD neuroimaging initiative group reported that the striatum may be an adjunctive biomarker [14]. Therefore, it is important to understand whether the psychiatric presentation [7] and cognitive profile [8] are related to COMT genotype-driven striatal pathways.

In 2006, Postuma and Dagher [15] proposed a seed-based model defining six striatal sub-regions and related cortical connections in the Talairach space. The striatal model divides the striatum into motor, associative, and limbic divisions. For the caudate nucleus, the most ventral to dorsal gradient spirals modulate the emotional/motivational aspects, followed by decision-making/executive control, and motor control functions [16, 17]. For the putamen, the functional connectivity has also been reported to show a rostral/caudal distinction that is primarily connected to the primary and secondary cortical motor areas and executive control [18]. Dopamine is necessary for prefrontal-dependent tasks, and the interest in COMT activity in neurodegenerative diseases has been based on its role in dopamine degradation [19]. Given that dopamine is a crucial mediator of neuronal function in AD, the striatal model [15] may be a good choice to understand the relationships between

COMT Val158Met genotypes and neurobehavioral presentations.

Recent research has suggested that highly related regions show covariance in morphometric characteristics, the so-called structural covariance. With careful control of confounding factors, structural covariance networks (SCNs) have been used to test the influence of genotypes [20]. The triple-network model proposed by Menon [21] has been reported to be of great clinical relevance in AD and includes the default mode network (DMN) [22–24], salience network [25], and executive control network [26, 27]. Within the DMN, two subsystems are particularly relevant [28]: the “medial temporal lobe subsystem” and the “dorsal medial prefrontal cortex subsystem” (or the midline core subsystem).

Dopamine may affect cognition by facilitating neuronal synchrony; however, a direct correlation between COMT genotypes and prefrontal-striatal dopamine levels or gene-cognitive profiles remains controversial [10, 29]. The aims of the current study were to explore the network effects of COMT genotypes and to assess *in vivo* whether different genotype groups may modulate the SCN patterns and thereby determine neurobehavioral outcomes in AD. Based on a literature review, we selected the striatal model [15] to assess dopamine activity and the triple-network model [21] to assess which networks are characteristically affected in AD. Based on the biological properties of COMT on the prefrontal cortex, we hypothesized that the COMT Met158Val functional polymorphism may modulate selective striatal SCNs that determined the neurobehavioral scores in AD.

Results

Demographic Data, Cognitive Data, and NPI

The distribution of the genotypes of the Val158Met polymorphism in the patients with AD was in Hardy-Weinberg equilibrium. There were no significant differences in gender, age, and educational level between the two genotype groups (Table 1). In addition, there was no difference in ApoE4 status between the two groups. The Met-carriers had significantly higher scores in mental manipulation subdomains compared with the Val-homozygotes. The Met-carriers had higher scores in the hallucination domains.

Patterns of SCN and Genetic Variants

A direct comparison between the gray matter (GM) volume of the Met-carriers and Val-homozygotes using voxel-based morphometry [30] showed no significant differences (with the threshold set at $p < 0.05$, corrected for a false discovery rate (FDR) with a cluster size >100 voxels). In the striatal model, the dorsal caudal putamen (DCP) seed had a significantly higher volume in the

Table 1 Demographical characteristics and neuropsychiatric tests in the COMT genotype groups in 192 Alzheimer's disease

Genotype group	Met-carriers (<i>n</i> = 91)	Val/Val (<i>n</i> = 101)	<i>p</i> value
Age	73.3 ± 8.6	73.9 ± 7.2	0.62
Education (year)	7.3 ± 4.9	7.4 ± 4.9	0.91
Apolipoprotein E4 carrier (positive case, %)	32, 35.16%	34, 33.66%	0.88
Sex (male/female)	43/48	52/49	0.56
MMSE	19.9 ± 6.36	19.6 ± 6.81	0.772
Clinical dementia rating sum of box	3.6 ± 3.02	4.0 ± 3.22	0.375
Mental manipulation	6.0 ± 3.30	4.7 ± 3.18	0.008
Attention	6.3 ± 1.44	6.0 ± 1.63	0.202
Orientation	12.6 ± 5.23	12.5 ± 5.31	0.821
Long-term memory	8.2 ± 2.96	7.9 ± 2.72	0.497
Short-term memory	4.9 ± 3.87	5.6 ± 3.92	0.199
Abstract thinking	8.2 ± 2.91	7.9 ± 2.77	0.398
Drawing	7.7 ± 2.91	7.6 ± 3.06	0.797
Verbal fluency	5.1 ± 2.69	4.9 ± 2.87	0.663
Language	8.1 ± 2.20	7.9 ± 2.44	0.528
Executive function test	25.5 ± 8.17	23.5 ± 8.41	0.507
Total scores of CASI	67.2 ± 21.85	65.1 ± 22.26	0.510
Neuropsychiatric inventory scores total	8.49 ± 13.45	7.89 ± 9.99	0.723
Delusion	0.84 ± 2.32	0.54 ± 1.81	0.332
Hallucination	0.31 ± 1.18	0.01 ± 0.10	0.012
Aggression	0.53 ± 2.03	0.25 ± 1.03	0.223
Depression	1.15 ± 2.70	1.23 ± 2.59	0.847
Anxiety	0.35 ± 1.48	0.44 ± 1.48	0.695
Elation	0.08 ± 0.52	0.01 ± 0.10	0.207
Apathy	0.77 ± 2.50	0.88 ± 2.74	0.769
Disinhibition	0.11 ± 0.75	0.36 ± 1.75	0.216
Irritability	1.12 ± 2.41	0.98 ± 2.02	0.661
Aberrant motor behavior	0.42 ± 1.75	0.39 ± 1.73	0.901
Sleep disorders	2.45 ± 4.42	2.10 ± 4.12	0.569
Eating behavior	0.37 ± 1.28	0.71 ± 2.02	0.171

Data are presented as mean (standard deviation) or number (percentage; %); attention, verbal fluency, abstract thinking, and mental manipulation sub-domain scores of the CASI were added to assess executive function; APOE4 carriers were defined as the presence of one or two APOE4 alleles. The italicized word represents scores showing significance

CASI cognitive ability screening instrument, COMT catechol-O-methyltransferase

Val-homozygotes (Fig. 1a), whereas in the triple-network model, the posterior cingulate cortex (PCC) seed volume was higher in the Met-carriers (Supplementary Figure 1B). The SCN patterns and related clusters in each genotype are shown in Fig. 1c, Supplementary 1C, and Supplementary Tables 1, 2, 3, 4, 5, 6, 7, 8, 9, 10, 11, 12, 13, 14, 15, 16, 17, 18, 19, 20.

Peak Clusters Showing Significant Interactions Between Genotype Groups

For each seed, we explored the genotypic interactions with regard to the topography showing differences in structural covariance strength between seed and peak clusters (Fig. 2; supplementary Table 21; Supplementary Figure 1D). The left

superior medial frontal region anchored to the entorhinal seed was the only significant cluster within the triple-network model showing Met-carriers > Val-homozygotes in covariance strength (Supplementary Figure 1D). In contrast, two seeds (Fig. 2a, DCP; Fig. 2b, dorsal rostral putamen (DRP)) within the striatal model exhibited 11 clusters showing Met-carriers > Val-homozygotes in covariance strength. However, there were no significant differences in direct comparisons of the volumes of the peak clusters between the two genotype groups.

Relationships Between Seed Volume and Cognitive Score

We also explored whether the seed volumes were correlated with the cognitive test scores in each group (supplementary

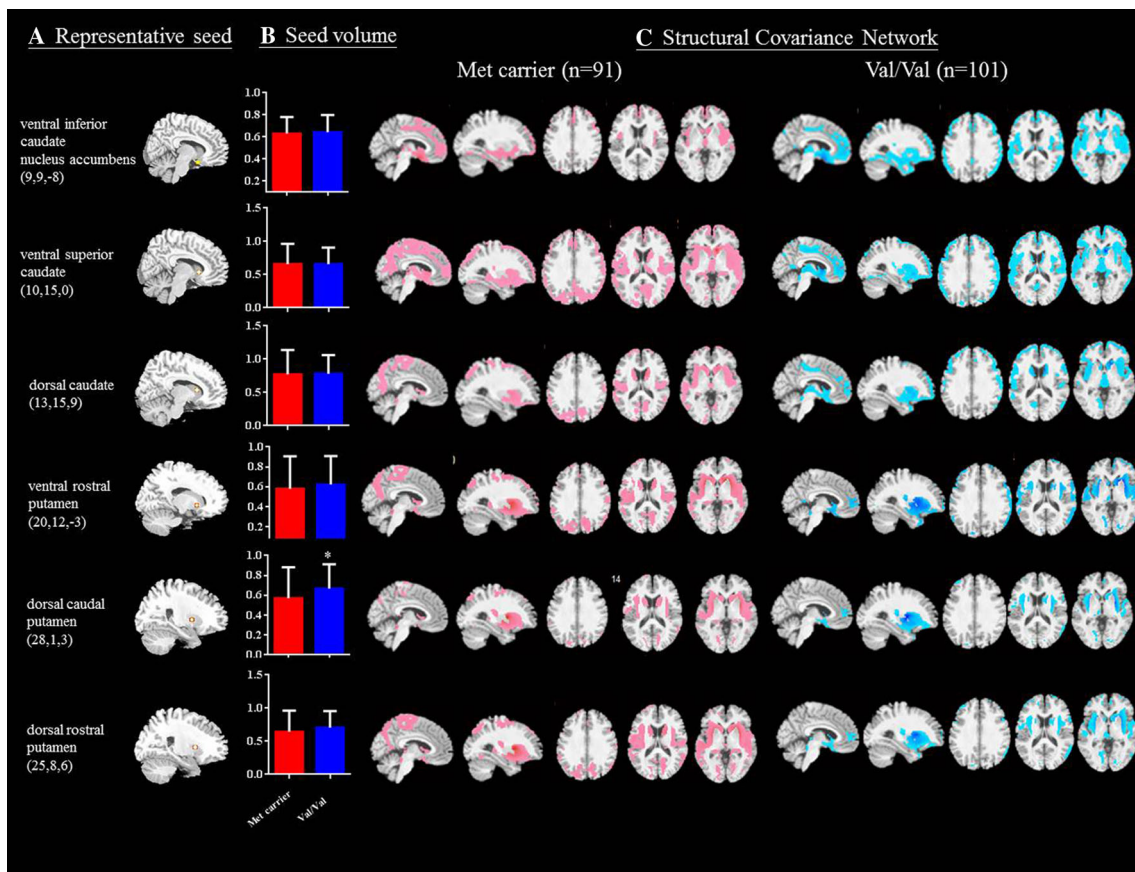


Fig. 1 Statistical maps depicting brain areas in which the gray matter intensity covaried with **a** six target seeds, **b** seed volume comparisons, and **c** structural covariance networks (Z-statistic maps [$p < 0.01$, corrected with a false discovery rate with extended cluster voxels >100]) in all patients with Alzheimer's disease with the catechol-O-methyltransferase

Val158Met polymorphism (Met-carriers, $n = 91$; Val-homozygote carriers, $n = 101$). A significantly lower dorsal caudal putamen gray matter seed volume was found in the Met-carriers ($p < 0.05$). The images were displayed on a standard brain render

Table 22: triple-network model; Table 2: striatal model). For the triple-network model, only the posterior cingulate seed volume was significantly correlated with cognitive test scores in both genotypes, while more cognitive domains reached statistical significance in the Met-carriers. For the striatal model, the seed volumes showed variable correlations with the cognitive test scores and neuropsychiatric inventory (NPI) subdomains. As the DCP and DRP seed-connected striatal network showed greater Met-carriers $>$ Val-homozygotes interactions, both seed volumes were related to the Mini-Mental State Examination (MMSE) scores in the Met-carriers and attention scores in the Val-homozygotes.

Clinical Significance of Peak Clusters Showing Genotype Differences

The clinical significance of the aforementioned 12 peak clusters (Supplementary Figure 1D, Fig. 2) showing genotype interactions was evaluated by correlation analysis with cognitive tests (Table 3 for the Met-carriers, Table 4 for the Val-homozygotes). The results suggested more significant

correlations with behavioral domains in the Met-carriers (Table 3) compared with the Val-homozygotes (Table 4).

Discussion

This study provides data on the neurobehavioral and network influence of COMT Val158Met in patients with AD. The findings can be considered in three levels: clinical, cortical regional, and network level. From the clinical level, the neurobehavioral comparisons between the Met-carriers and Val-homozygotes showed that the lower COMT activity group had higher scores in mental manipulation scores and hallucination domains. From the regional aspect, the significant correlations between test scores and the seed or peak cluster volumes demonstrated the clinical significance of PCC in DMN and all six striatum regions. Lastly, although the triple-network model has been well studied in AD, our network analysis results support a higher weighting of striatum-related circuits according to the COMT genotype, of which the DCP- or DRP-

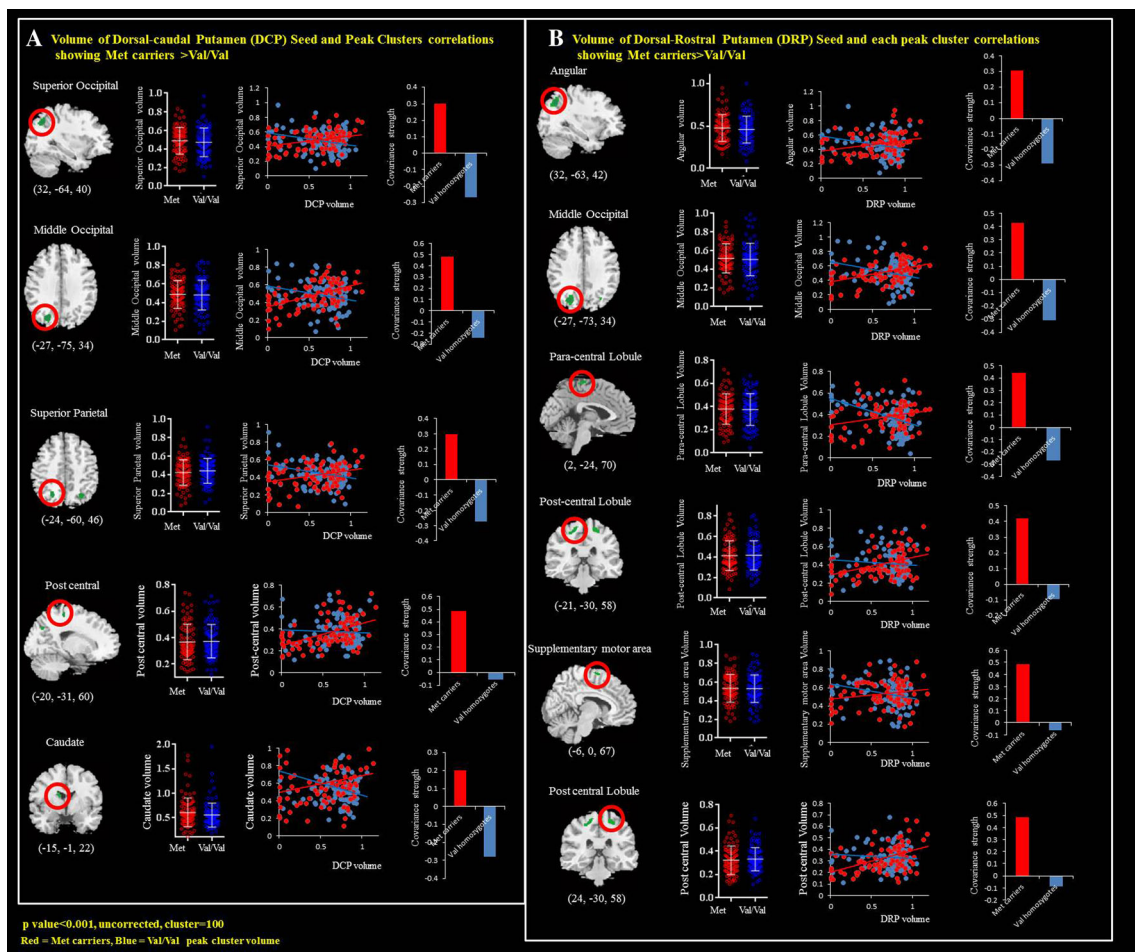


Fig. 2 Peak clusters showing significant interactions of Met-carriers > Val-homozygotes from the **a** dorsal caudal putamen (DCP) and **b** dorsal rostral putamen (DRP) seed. There were five DCP-related peak clusters and six DRP-related clusters. x, y, z = Montreal Neurological Institute coordinates

interconnected networks that contributed differently to the prediction of clinical outcome were most pronounced.

COMT Genotypes in AD Symptomatology Modulation

Although the disease-causing genetic profiles for AD have been identified in genome-wide association studies, these genetic markers have not been fully investigated with regard to outcome correlations. This formed the basis of the current study. Met-carriers can be considered as a group with long-term lower COMT activity compared to Val-homozygotes. Our Met-carriers presented with higher mental manipulation test and hallucination scores, supporting the biological link between the COMT Val158Met polymorphism and prefrontal dopamine metabolism [31]. Our results also validate those reported in normal elderly [32] and in patients with dementia [8] in that those with low COMT enzyme activity perform better in prefrontal-directed tasks or that it is related to psychiatric manifestations [7, 33]. Of note, COMT activity can be confounded by physiological factors such as gender, age, sex

hormones, and ApoE4 status [4, 34]. However, the association between COMT polymorphisms and decline in executive control with aging is controversial [35, 36].

The clinical correlation suggests that the PCC volume can be used to predict cognitive but not NPI performance (Supplementary Table 22). The peak clusters anchored by the PCC and the clinical correlations were also not significant in the Met-carriers (Table 3) or Val/Val group (Table 4). Therefore, the COMT Val158Met polymorphism showed greater weighting in the striatal network than in the triple network to predict cognitive symptoms.

COMT Genotype Effects on the Clinical Presentations Modulated by Large-Scale Striatum Networks

The DCP and DRP seed volumes were related to the MMSE and long-term memory scores in our Met-carriers, whereas significant correlations between the DCP and DRP seed volumes were found in the attention scores, hallucination, and eating behavior in the Val-homozygotes. There are several

Table 2 Correlations between neurobehavioral test scores and seed volumes in the striatal model in each catechol-O-methyltransferase genotype groups

Seed no.	Genotype groups	Putamen															
		Caudate				Dorsal				Dorsal rostral				Ventral rostral			
		Ventral inferior		Ventral superior		Dorsal		Dorsal caudal		Dorsal rostral		Ventral rostral		Met-carriers		Val/Val	
		Met-carriers	Val/Val	Met-carriers	Val/Val	Met-carriers	Val/Val	Met-carriers	Val/Val	Met-carriers	Val/Val	Met-carriers	Val/Val	Met-carriers	Val/Val	Met-carriers	Val/Val
MMSE		0.11	0.21*	0.20	0.23*	0.03	0.19	0.23*	0.14	0.23*	0.17	0.28*	0.14	0.23*	0.17	0.28*	0.25*
CASI total scores		0.11	0.20*	0.19	0.21*	0.02	0.18	0.21*	0.11	0.19	0.13	0.23*	0.11	0.19	0.13	0.23*	0.22*
Executive function test		0.11	0.21*	0.19	0.21*	0.02	0.18	0.20	0.12	0.19	0.14	0.23*	0.12	0.19	0.14	0.23*	0.21*
Mental Manipulation		-0.07	0.12	0.06	0.24*	-0.02	0.22*	0.15	0.14	0.15	0.16	0.13	0.15	0.15	0.16	0.13	0.22*
Attention		0.19	0.23*	0.27**	0.26**	0.12	0.14	0.17	0.23*	0.19	0.22*	0.23*	0.19	0.22*	0.23*	0.23*	0.29**
Orientation		0.10	0.18	0.12	0.10	-0.04	0.05	0.09	0.10	0.08	0.09	0.15	0.08	0.09	0.15	0.14	0.14
Long-term memory		0.22*	-0.01	0.26*	0.13	0.14	0.12	0.29**	0.03	0.23*	0.07	0.24*	0.03	0.23*	0.07	0.24*	0.17
Short-term memory		0.11	0.29**	0.10	0.18	-0.14	0.15	0.08	0.10	0.03	0.09	0.11	0.10	0.03	0.09	0.11	0.15
Abstract thinking		0.09	0.18	0.15	0.10	-0.01	0.11	0.15	0.03	0.14	0.03	0.17	0.03	0.14	0.03	0.17	0.03
Drawing		-0.03	0.13	0.13	0.15	0.10	0.18	0.20	0.04	0.20	0.12	0.25*	0.04	0.20	0.12	0.25*	0.16
Verbal fluency		0.11	0.14	0.22*	0.20*	0.06	0.12	0.22	0.08	0.24*	0.09	0.23*	0.08	0.24*	0.09	0.23*	0.17
Language		0.12	0.18	0.16	0.25*	0.11	0.23*	0.20	0.13	0.19	0.17	0.20	0.13	0.19	0.17	0.20	0.25*
NPI total scores		-0.04	0.06	0.02	-0.05	0.08	-0.01	-0.05	-0.03	0.00	-0.04	-0.03	0.00	0.00	-0.04	-0.03	0.02
Delusion		-0.14	-0.06	0.00	0.00	0.00	0.08	-0.08	0.06	-0.06	0.07	-0.07	0.06	-0.06	0.07	-0.07	0.04
Hallucination		-0.05	-0.14	-0.07	-0.21*	-0.12	-0.20*	-0.16	-0.27**	-0.16	-0.28**	-0.13	-0.16	-0.16	-0.28**	-0.13	-0.22*
Aggression		-0.16	-0.04	-0.10	-0.02	-0.02	0.01	-0.09	-0.15	-0.03	-0.16	-0.12	-0.03	-0.03	-0.16	-0.12	-0.08
Depression		0.10	0.16	0.07	0.00	0.06	0.13	0.08	0.14	0.05	0.14	0.01	0.05	0.05	0.14	0.01	0.22*
Anxiety		0.04	0.21*	0.05	-0.01	0.00	0.08	0.05	0.02	0.00	0.09	-0.03	0.00	0.00	0.09	-0.03	0.10
Elation		-0.09	-0.12	-0.17	-0.15	-0.04	-0.04	-0.16	-0.04	-0.04	-0.01	-0.11	-0.04	-0.04	-0.01	-0.11	-0.02
Apathy		-0.06	-0.22*	-0.10	-0.02	0.01	-0.07	-0.16	0.10	-0.09	0.03	-0.12	-0.09	-0.09	0.03	-0.12	0.07
Disinhibition		-0.20	-0.02	-0.02	-0.12	-0.01	-0.03	-0.06	-0.05	-0.01	-0.08	0.01	-0.01	-0.01	-0.08	0.01	-0.05
Irritability		-0.07	0.23*	0.02	0.11	0.00	0.07	-0.05	-0.09	-0.04	0.02	-0.06	-0.04	-0.04	0.02	-0.06	0.13
Aberrant motor behavior		-0.14	-0.11	-0.07	-0.10	-0.05	-0.08	-0.20	-0.02	-0.15	-0.04	-0.15	-0.04	-0.15	-0.04	-0.15	-0.02
Sleep disorder		0.12	0.15	0.13	0.00	0.23*	0.02	0.16	-0.01	0.21*	-0.02	0.22*	0.21*	-0.02	-0.02	0.22*	-0.07
Eating behavior		0.04	-0.07	0.09	-0.09	0.06	-0.24*	-0.03	-0.27**	-0.06	-0.31**	0.03	-0.06	-0.06	-0.31**	0.03	-0.24*

MMSE Mini-Mental State Examination, NPI neuropsychiatric inventory, CASI cognitive ability screening instrument

Numbers indicate Pearson's correlation coefficients—* $p < 0.05$; ** $p < 0.01$

Table 3 Significant correlations between peak cluster volumes and neurobehavioral test scores in the COMT Met-carriers

Seed region	PCC			Dorsal caudal putamen			Dorsal rostral putamen					
	Superior medial frontal	Superior occipital	Middle occipital	Superior parietal	Postcentral	Caudate	Angular	Middle occipital	Paracentral lobule	Caudate	SMA	Postcentral
Mini-Mental State Examination	0.15	0.16	0.42**	0.18	0.27*	-0.14	0.20	0.43**	-0.06	0.22*	0.03	0.25*
CASI total scores	0.11	0.19	0.45**	0.19	0.24*	-0.14	0.24*	0.47**	-0.07	0.19	-0.01	0.20
CASIEFT scores	0.11	0.20	0.42**	0.16	0.21*	-0.14	0.26*	0.42**	-0.07	0.20	0.02	0.17
Short-term memory	0.14	0.00	0.26*	0.12	0.13	-0.27*	0.01	0.30**	-0.17	0.08	-0.08	0.04
Orientation	0.09	0.20	0.41**	0.21*	0.19	-0.10	0.25*	0.43**	-0.03	0.11	-0.06	0.18
Long-term memory	0.06	0.21*	0.48**	0.20	0.26*	-0.04	0.25*	0.48**	0.01	0.22*	0.04	0.25*
Language	0.09	0.08	0.37**	0.12	0.26*	-0.11	0.10	0.38**	0.01	0.21*	-0.02	0.21
Drawing	0.13	0.19	0.32**	0.10	0.21*	0.00	0.22*	0.35**	-0.09	0.17	0.08	0.24*
Attention	0.11	0.23*	0.36**	0.17	0.22*	-0.03	0.23*	0.35**	0.13	0.22*	0.15	0.20
Verbal fluency	0.01	0.13	0.29*	0.13	0.11	-0.13	0.16	0.25*	-0.05	0.16	-0.05	0.06
Abstract thinking	0.08	0.17	0.41**	0.12	0.21	-0.16	0.24*	0.44**	-0.02	0.23*	-0.01	0.14
Mental manipulation	0.07	0.15	0.31*	0.10	0.17	-0.09	0.21*	0.31**	-0.17	0.07	0.03	0.16
Hallucination	-0.04	-0.15	-0.20	0.00	-0.07	0.00	-0.16	-0.20	0.26*	-0.07	0.15	-0.13
Anxiety	0-0.134	-0.02	0.21*	0.15	-0.03	-0.06	-0.05	0.19	0.04	-0.01	-0.10	-0.09
Elation	-0.067	-0.17	-0.20	0.10	-0.10	0.03	-0.17	-0.24*	0.03	-0.11	0.02	-0.10
Apathy	-0.087	-0.23*	-0.29**	-0.06	-0.17	-0.03	-0.21*	-0.29**	0.14	-0.14	0.04	-0.04
Aberrant motor behavior	-0.129	-0.13	-0.20	0.01	-0.22*	-0.04	-0.12	-0.23*	0.03	-0.22*	-0.04	-0.14
Eating behavior	-0.073	-0.13	-0.06	0.11	0.09	0.21*	-0.20	-0.07	0.19	0.09	0.10	-0.02

Selected peak clusters indicate structural covariance strength showing Met-carriers > Val-homozygotes PCC posterior cingulate cortex, SMA supplementary motor area, COMT catechol-O-methyltransferase Numbers indicate Pearson's correlation coefficients—* $p < 0.05$; ** $p < 0.01$

Table 4 Significant correlations between peak cluster volume and neurobehavioral test scores in the Valine homozygotes

Seed	PCC		DCP seed			DRP seed							
	Superior medial frontal		Superior occipital	Middle occipital	Superior parietal	Postcentral	Caudate	Angular	Middle occipital	Paracentral lobule	Caudate	SMA	Postcentral
CASIEFT scores	-0.05		0.15	0.12	0.20*	0.09	-0.05	0.05	0.08	-0.12	0.13	-0.05	0.05
Abstract thinking	0.10		0.19	0.05	0.15	0.15	-0.10	0.07	0.03	-0.10	0.20*	0.07	0.13
Hallucination	0.04		0.02	0.06	0.19**	0.11	-0.05	-0.03	0.09	0.21*	0.05	0.00	-0.13
Aggression	0.18		0.20*	0.20*	-0.01	0.06	0.12	0.24*	0.26**	0.13	0.00	0.25*	0.08
Depression	0.11		0.09	0.04	0.03	0.20*	-0.03	0.16	0.04	0.06	0.17	0.12	0.27**
Elation	-0.02		-0.24*	-0.26**	-0.12	-0.06	-0.07	-0.24*	-0.24*	-0.17	-0.06	-0.12	-0.10

The CASI seed regions are dorsal rostral putamen (DRP) and dorsal caudal putamen (DCP)

MMSE Mini-Mental State Examination, EFT executive function test, CASI cognitive ability screening instrument, PCC posterior cingulate cortex, SMA supplementary motor area

Numbers indicate Pearson's correlation coefficients—* $p < 0.05$; ** $p < 0.01$

possible mechanisms as to how the genotype may modulate the neurobehavioral profile. Such differences in clinical profile may reflect the genotype modulation associated with COMT activity. In addition, within the DCP- and DRP-interconnected peak clusters, the clusters and seeds each contribute differently to the genotype group, leading to different levels of COMT enzymatic expression that affect anatomical correlations.

The peak clusters showing interactions with covariance strength between the genotype groups (i.e., Met-carriers > Val-homozygotes) were tested for their effect on dopamine. As more statistically significant neurobehavioral domains were found in the Met-carriers in the network showing higher covariance strength (Table 3: Met-carriers; Table 4: Val-homozygotes), the mechanisms as to why an increased dopamine expression may be related to better cognitive performance and more psychiatric presentations were validated in the striatum network.

COMT Genotypes Modulated the Dorsal Putaminal Dopaminergic Network

In our analysis, the Val/Val group had higher dorsal caudal putamen volumes (Fig. 1b) but lower mental manipulation and hallucination scores (Table 1), suggesting that the dorsal caudal putamen was responsible for impaired cognitive modulation but a lower tendency of psychiatric symptoms. Based on the correlation analysis (Table 2), a significant inverse correlation with hallucination score was shown in the Val/Val group, suggesting that the integrity of the dorsal putamen may protect against hallucinations in AD.

Our network analysis further supported the genetic effects of COMT on the striatum and its functional circuits. Based on the interactions, the dorsal putaminal networks were more important than the ventral networks. In the dorsal putaminal networks, correlation analysis showed different patterns between DCP or DRP and neurobehavioral patterns. These network differences may reflect differences in genotype groups and neuroanatomy, as greater connections were found between DCP and BA 6 and between DRP and dorsal ACC [37].

The ventral rostral putamen seed along with the rostral portion of the anterior cingulate cortex and dorsolateral prefrontal cortex was associated with conflict monitoring and error-related processes. Genotype interactions in the ventral rostral putamen seed-connected clusters were lacking. Nonetheless, the significant correlations between ventral rostral putamen seed volume and MMSE, cognitive ability screening instrument (CASI) total score, executive function test, and attention scores in both genotype groups suggest the clinical role of the ventral rostral putamen seed.

Caudate Seed and Clinical Features in the Val-Homozygotes

None of the peak clusters connected to the ventral striatum seed showed greater structural covariance strength in the Met-carriers. This may be due to a minor genotype modulation effect on the ventral striatum-interconnected clusters. The correlations between ventral striatum seed and neurobehavioral symptoms were still significant and displayed a parallel correlation pattern in the superior ventral striatum or inferior ventral striatum, especially in the Val-homozygotes. These results may be related to the identical structural projection zone of the superior ventral striatum [38–41] and inferior ventral striatum seed [42–45].

For the dorsal caudate nucleus, the anatomical connection has been associated with the dorsolateral prefrontal cortex and executive control regions [46–48]. The dorsal caudate nucleus seed volume was related to the mental manipulation and language ability in the Val-homozygotes. Of note, in the Val-homozygotes, the COMT genotype effect that significantly modulated the caudate seed determined the clinical features.

Inconsistent Effect of COMT on Cortices and Possible Explanations

Individuals with the Val/Val genotype have been reported to have higher levels of tyrosylase mRNA in mesencephalic dopamine neuronal populations that project to the striatum [10], which may explain why the COMT valine allele leads to susceptibility to psychosis. However, as the pathological specimens in Akil et al.'s study excluded those from patients with AD, the direct application of their results is not possible. In our analysis, the Val/Val group had higher dorsal caudal putamen volumes (Fig. 1b) but lower mental manipulation and hallucination scores (Table 1), suggesting that the dorsal caudal putamen is responsible for impaired cognitive modulation but a lower tendency toward psychiatric symptoms. In our correlation analysis (Table 2), a significant inverse correlation with hallucination score was shown in the Val/Val group, suggesting that the integrity of the dorsal putamen may protect against hallucinations in AD.

In addition to the physiological role of striatal networks, several factors in AD may also contribute to the inconsistent effect of COMT. For example, the genetic expression of COMT and the effect of the dopamine system can be influenced by aging, amyloid load, and disease severity. During the physiological aging process, decreased dopamine release, decreased receptor expression (especially D2), and reduced transporter expression are found in the caudate, putamen, hippocampus, and prefrontal cortex of human brains [49, 50]. In AD, atrophy of the caudate [14] and putamen [51] has also been reported, and decreases in volume have also been correlated with cognitive deficits. In addition, the integrity of

nicotinic acetylcholine receptors can be affected by amyloid-related pathologies in AD [52, 53] such as neuronal homeostasis, synaptic plasticity, learning, and memory.

The striatum network in AD is mediated by different pathways and neurotransmitters, and dopaminergic pathways such as nigrostriatal pathways (substantia nigra and striatum) modulate voluntary movement and mesocorticolimbic pathways (ventral tegmental area, hippocampus, nucleus accumbens) modulate cognitive-behavior-reward function. Although dopamine levels have been reported to be higher in the striatum of individuals with the Val/Val genotype than in those with the Val/Met genotype [10], the areas showing most significant differences were in the ventral tier of the substantia nigra. Animal studies have shown that diminished prefrontal dopamine neurotransmission leads to upregulation of striatal dopamine activity, while higher dopamine levels in Val/Val may downregulate the activity at the level of the prefrontal cortex and also the mesolimbic system. The increased mesencephalic dopamine activity with the Val allele may regulate cortical glutaminergic projections (prefrontal, hippocampus, and amygdala) back to the mesolimbic pathways. The dynamic changes in network alterations along with the pathological cascades may have confounded the data with regard to the effects of the COMT genotype.

Study Limitations

An important limitation of this study is that we did not include a control group. The enrolment of controls may have helped to elucidate whether the COMT polymorphism has a similar effect on the normative brain network. Our results support published data on elderly healthy subjects that genetic variations of the COMT polymorphism may mediate pre-frontal-related tasks [31]. However, direct analysis of SCN patterns in the striatal or triple network with changes in structural covariance strength in controls was not available. The results of this suggest how the COMT genetic polymorphism may interfere with structural networks and may be correlated with the neurobehavioral symptoms in AD. Another potential limitation is that we reported the peak clusters which showed greater covariance in the Met-carriers compared with the Val-homozygotes. Such group stratification only explores the intracerebral long-term effects of dopamine on the neurobehavioral outcomes. The expression of the COMT genotype has been reported to be affected by gene-environment interactions [54] which could not be fully included in this study model. Nonetheless, our results may suggest that the underlying sensitivity of genotype groups or the dopamine transmitter system is due to an environmental impact. Third, it has also been reported that cross-sectional findings of genetic effects could not be replicated in longitudinal observations [35, 36]. Further longitudinal studies including more extensive cognitive test items are warranted.

Conclusion

In AD, the COMT Val158Met polymorphism modulates the striatal network rather than the triple network with regard to predicting symptoms. The genotype group itself, seed volume, or striatal network provided variable predictions of the clinical features. In the striatal network, greater covariance strength in the Met-carriers was found in the DCP- and DRP-interconnected networks that were suggestive of a long-term dopamine-related effect. Along with the significant clinical correlations, the DCP- and DRP-interconnected networks may be considered to be the major networks modulated by the COMT genotype.

Materials and Methods

This study was conducted in accordance with the Declaration of Helsinki and was approved by the Institutional Review Board of Chang Gung Memorial Hospital. The study participants were treated at the Cognition and Aging Center, Department of General Neurology, Kaohsiung Chang Gung Memorial Hospital. A total of 192 subjects (95 males, 97 females) were included after the consensus of a panel composed of neurologists, neuropsychologists, neuroradiologists, and experts in nuclear medicine [55]. AD was diagnosed according to the International Working Group criteria [45] with a clinical diagnosis of typical AD. All of the patients were in a stable condition under acetylcholine esterase inhibitor treatment from the time of diagnosis. The exclusion criteria were a past history of clinical stroke, a modified Hachinski ischemic score >4 , and depression.

Study Working Scheme

Because of the limited number of subjects in the Met/Met group, we grouped the Val/Met and Met/Met subjects into the Met-carrier group in all subsequent analysis: Met-carriers (Met/Met = 20, Met/Val = 71, $n = 91$) and Val-homozygotes ($n = 101$). The working scheme was as follows. First, the SCNs were established by seed-based correlation analysis. Differences in each seed regional volume were compared between two genotype groups and correlated with the neurobehavioral scores. In order to evaluate the dopaminergic network effects, only the peak clusters showing Met-carriers $>$ Val/Val in covariance strength were considered as statistically significant. The volumes of the significant peak clusters were selected and correlated with cognitive test scores to evaluate the clinical relevance in each genotype group.

Clinical and Neurobehavioral Assessments

After enrolment, demographic data of each patient were recorded. A trained neuropsychologist administered the neurobehavioral tests. The MMSE scores and CASI total scores were used as a global assessment of cognitive function. Attention, verbal fluency, abstract thinking, and mental manipulation sub-domain scores of the CASI were used to assess executive function test (EFT) [56], while the non-executive domains included orientation, short- and long-term memory, language ability, and drawing. For the behavioral observations, we used the 12-item version of the NPI [57], with scores ranging from 0 to 144.

Genotyping for COMT

Genotyping of COMT Val158Met was performed using the polymerase chain reaction-restriction fragment length polymorphism method. In brief, a DNA fragment containing the Val/Met polymorphism in COMT was amplified by polymerase chain reaction with primers reported by Lachman et al. [58]. The Val/Met polymorphism was differentiated by the *Nla*III restriction fragment length polymorphism analyzed on 10% polyacrylamide gel. Partial digestion and contamination amplification were ruled out by the complete digestion of an intrinsic restriction site and a blank sample in each batch of experiments, respectively. The ApoE genotype was determined using a PCR-restriction fragment length polymorphism assay and restriction enzyme *Hha*I. ApoE4 carriers were defined as those with one or two E4 alleles.

Image Acquisition

MR images were acquired using a 3.0T MRI scanner (Excite, GE Medical Systems, Milwaukee, WI, USA). Structural images were acquired for SCN constructions using the following protocols: a T1-weighted, inversion-recovery-prepared, three-dimensional, gradient-recalled acquisition in a steady-state sequence with a repetition time/echo time/inversion time of 8600 ms/minimal/450 ms, a 256×256 mm field of view, and a 1-mm slice sagittal thickness with a resolution of $0.5 \times 0.5 \times 1$ mm³.

Data Analysis for Neuroimaging Biomarkers

Image preprocessing and statistical analysis were performed using SPM8 (SPM8, Wellcome Trust Centre of Cognitive Neurology, University College London, UK, <http://www.fil.ion.ucl.ac.uk/spm/>). The T1 images were reoriented, realigned, and normalized using the standard Montreal Neurological Institute space. The images were then segmented into GM and white matter. Related tissue segments were used to create a custom template using the

diffeomorphic anatomical registration using exponentiated lie algebra (DARTEL) approach. The DARTEL approach is one of the highest ranking registration methods in patients with AD [59]. The modulated and warped images were then smoothed using a Gaussian kernel of 8 mm full width at half maximum.

Images Analysis

To investigate the SCNs, 10 regions of interest, representing seeds, were selected from the 192 preprocessed images. The striatal network [15] included the following seeds (Fig. 1a): inferior ventral striatum [coordinates: [9, 9, -8], superior ventral striatum [coordinates: 10, 15, 0]; dorsal caudate [coordinates: 13, 15, 9]; ventral rostral putamen [coordinates: 20, 12, -3]; dorsal caudal putamen [DCP; coordinates: 28, 1, 3]; dorsal rostral putamen [DRP; coordinates: 25, 8, 6]. The coordinates of seed in the triple-network model included the right entorhinal cortex [coordinates: 25, -9, -28] and left posterior cingulate cortex [PCC; coordinates: -2, -36, 35] of the DMN, right frontoinsula cortex [coordinates: 38, 26, -10] of the salience network, and right dorsolateral prefrontal cortex [coordinates: 44, 36, 20] of the executive control network [25] (supplementary fig 1).

From the modified GM images, the GM volumes of a 4-mm radius sphere around the seed coordinates were also calculated, followed by 10 separate correlation analyses using the extracted GM volumes as the covariates of interest, to form the SCN. The two genotype groups were modeled separately. Based on the equivalent sample sizes in each genotype group, T contrasts were used to identify voxels that showed positive correlations for each seed. The results reflected the SCNs anchored by each seed. The threshold was set at $p < 0.01$, corrected for false discovery rate (FDR) with a cluster size >100 voxels.

In addition, to investigate how genetic variance may interfere with SCN covariance strength, voxels showing significant differences in the regression slopes in each seed-peak cluster correlations were compared that pointed to interactions between Met-carriers $>$ Val-homozygotes. Specific T contrasts were established to map the voxels that expressed significant between-group associations.

For the peak clusters showing significant between-group differences, a 4-mm radius sphere was placed on the peak voxel, and the GM volumes were then calculated. To evaluate the clinical significance of the seed or the identified peak voxel, we used correlation analysis with the cognitive test or NPI scores as outcome measures. The threshold was set at $p < 0.05$ with multiple corrections.

Statistical Analysis

Clinical and laboratory data were expressed as mean \pm standard deviation. The Student *t* test was used to compare the

continuous variables and chi-square test for category variables. Pearson's correlation was used to analyze the seed or cluster volume on predicting the cognitive or NPI scores. All statistical analyses were conducted using SPSS software (SPSS version 22 for Windows®, SPSS Inc., Chicago, IL). Statistical significance was set at $p < 0.05$.

Acknowledgements The authors wish to thank the patients and their caregivers for their time and commitment to this research.

Compliance with Ethical Standards

Funding This work was supported by grants CMRPG8C0571, CMRPG8D0771 and CMRPG8E0541 from the Chang Gung Memorial Hospital and 104-2314-B-182A-026-MY2 from the National Science Council to CCC for MRI acquisition, genetic and clinical data collection, and analysis.

Open Access This article is distributed under the terms of the Creative Commons Attribution 4.0 International License (<http://creativecommons.org/licenses/by/4.0/>), which permits unrestricted use, distribution, and reproduction in any medium, provided you give appropriate credit to the original author(s) and the source, provide a link to the Creative Commons license, and indicate if changes were made.

References

1. Serretti A, Olgiati P (2012) Catechol-o-methyltransferase and Alzheimer's disease: a review of biological and genetic findings. *CNS Neurol Disord Drug Targets* 11(3):299–305
2. Martorana A, Koch G (2014) Is dopamine involved in Alzheimer's disease? *Front Aging Neurosci* 6:252. doi:10.3389/fnagi.2014.00252
3. Yan W, Zhao C, Sun L, Tang B (2016) Association between polymorphism of COMT gene (Val158Met) with Alzheimer's disease: an updated analysis. *J Neurol Sci* 361:250–255. doi:10.1016/j.jns.2016.01.014
4. Wang PN, Liu HC, Liu TY, Chu A, Hong CJ, Lin KN, Chi CW (2005) Estrogen-metabolizing gene COMT polymorphism synergistic APOE epsilon4 allele increases the risk of Alzheimer disease. *Dement Geriatr Cogn Disord* 19(2–3):120–125. doi:10.1159/000082663
5. Lanni C, Garbin G, Lisa A, Biundo F, Ranzenigo A, Sinforiani E, Cuzzoni G, Govoni S et al (2012) Influence of COMT Val158Met polymorphism on Alzheimer's disease and mild cognitive impairment in Italian patients. *J Alzheimer's Dis: JAD* 32(4):919–926. doi:10.3233/jad-2012-120358
6. Martinez MF, Martin XE, Alcega LG, Flores JC, Valiente JM, Juanbelta BI, Beldarrain MA, Lopez JM et al (2009) The COMT Val158 Met polymorphism as an associated risk factor for Alzheimer disease and mild cognitive impairment in APOE 4 carriers. *BMC Neurosci* 10:125. doi:10.1186/1471-2202-10-125
7. Sweet RA, Devlin B, Pollock BG, Sukonick DL, Kastango KB, Bacanu SA, Chowdari KV, DeKosky ST et al (2005) Catechol-O-methyltransferase haplotypes are associated with psychosis in Alzheimer disease. *Mol Psychiatry* 10(11):1026–1036. doi:10.1038/sj.mp.4001709
8. Nedic G, Borovecki F, Klepac N, Mubrin Z, Hajnsek S, Nikolac M, Muck-Seler D, Pivac N (2011) Association study of a functional catechol-o-methyltransferase polymorphism and cognitive function in patients with dementia. *Coll Antropol* 35(Suppl 1):79–84

9. Pereira PA, Romano-Silva MA, Bicalho MA, de Moraes EN, Malloy-Diniz L, Pimenta GJ, Mello MP, Bozzi IC et al (2012) Catechol-O-methyltransferase genetic variant associated with the risk of Alzheimer's disease in a Brazilian population. *Dement Geriatr Cogn Disord* 34(2):90–95. doi:10.1159/000341578
10. Akil M, Kolachana BS, Rothmond DA, Hyde TM, Weinberger DR, Kleinman JE (2003) Catechol-O-methyltransferase genotype and dopamine regulation in the human brain. *J Neurosci* 23(6):2008–2013
11. O'Doherty J, Dayan P, Schultz J, Deichmann R, Friston K, Dolan RJ (2004) Dissociable roles of ventral and dorsal striatum in instrumental conditioning. *Science (New York, NY)* 304(5669):452–454. doi:10.1126/science.1094285
12. Chang CC, Hsu JL, Chang WN, Huang SH, Huang CW, Chang YT, Chen NC, Lui CC et al (2016) Metabolic covariant network in relation to nigrostriatal degeneration in carbon monoxide intoxication-related parkinsonism. *Front Neurosci* 10:187. doi:10.3389/fnins.2016.00187
13. Chang CC, Hsiao IT, Huang SH, Lui CC, Yen TC, Chang WN, Huang CW, Hsieh CJ et al (2015) F-FP-(+)-DTBZ positron emission tomography detection of monoaminergic deficient network in patients with carbon monoxide related parkinsonism. *Eur J Neurol* 22(5):845–852, e859–860. doi:10.1111/ene.12672
14. Madsen SK, Ho AJ, Hua X, Saharan PS, Toga AW, Jack CR Jr, Weiner MW, Thompson PM (2010) 3D maps localize caudate nucleus atrophy in 400 Alzheimer's disease, mild cognitive impairment, and healthy elderly subjects. *Neurobiol Aging* 31(8):1312–1325. doi:10.1016/j.neurobiolaging.2010.05.002
15. Postuma RB, Dagher A (2006) Basal ganglia functional connectivity based on a meta-analysis of 126 positron emission tomography and functional magnetic resonance imaging publications. *Cereb Cortex* 16(10):1508–1521. doi:10.1093/cercor/bhj088
16. Haber SN, Fudge JL, McFarland NR (2000) Striatonigrostriatal pathways in primates form an ascending spiral from the shell to the dorsolateral striatum. *J Neurosci* 20(6):2369–2382
17. Haber SN (2003) The primate basal ganglia: parallel and integrative networks. *J Chem Neuroanat* 26(4):317–330
18. Parent A, Hazrati LN (1995) Functional anatomy of the basal ganglia. I. The cortico-basal ganglia-thalamo-cortical loop. *Brain Res Rev* 20(1):91–127
19. Yavich L, Forsberg MM, Karayiorgou M, Gogos JA, Mannisto PT (2007) Site specific role of catechol-O-methyltransferase in dopamine overflow within prefrontal cortex and dorsal striatum. *J Neurosci* 27(38):10196–10209. doi:10.1523/jneurosci.0665-07.2007
20. Lin PH, Tsai SJ, Huang CW, Mu-En L, Hsu SW, Lee CC, Chen NC, Chang YT et al (2016) Dose-dependent genotype effects of BDNF Val66Met polymorphism on default mode network in early stage Alzheimer's disease. *Oncotarget*. doi:10.18632/oncotarget.11027
21. Menon V (2011) Large-scale brain networks and psychopathology: a unifying triple network model. *Trends Cogn Sci* 15(10):483–506. doi:10.1016/j.tics.2011.08.003
22. Greicius MD, Srivastava G, Reiss AL, Menon V (2004) Default-mode network activity distinguishes Alzheimer's disease from healthy aging: evidence from functional MRI. *Proc Natl Acad Sci U S A* 101(13):4637–4642. doi:10.1073/pnas.0308627101
23. Greicius MD, Supekar K, Menon V, Dougherty RF (2009) Resting-state functional connectivity reflects structural connectivity in the default mode network. *Cereb Cortex* 19(1):72–78. doi:10.1093/cercor/bhn059
24. Seeley WW, Allman JM, Carlin DA, Crawford RK, Macedo MN, Greicius MD, Dearmond SJ, Miller BL (2007) Divergent social functioning in behavioral variant frontotemporal dementia and Alzheimer disease: reciprocal networks and neuronal evolution. *Alzheimer Dis Assoc Disord* 21(4):S50–S57. doi:10.1097/WAD.0b013e31815c0f14
25. Seeley WW, Menon V, Schatzberg AF, Keller J, Glover GH, Kenna H, Reiss AL, Greicius MD (2007) Dissociable intrinsic connectivity networks for salience processing and executive control. *J Neurosci* 27(9):2349–2356. doi:10.1523/jneurosci.5587-06.2007
26. Agosta F, Pievani M, Geroldi C, Copetti M, Frisoni GB, Filippi M (2012) Resting state fMRI in Alzheimer's disease: beyond the default mode network. *Neurobiol Aging* 33(8):1564–1578. doi:10.1016/j.neurobiolaging.2011.06.007
27. Filippi M, Agosta F, Scola E, Canu E, Magnani G, Marcone A, Valsasina P, Caso F et al (2013) Functional network connectivity in the behavioral variant of frontotemporal dementia. *Cortex* 49(9):2389–2401. doi:10.1016/j.cortex.2012.09.017
28. Andrews-Hanna JR, Reidler JS, Sepulcre J, Poulin R, Buckner RL (2010) Functional-anatomic fractionation of the brain's default network. *Neuron* 65(4):550–562. doi:10.1016/j.neuron.2010.02.005
29. Dickinson D, Elvevag B (2009) Genes, cognition and brain through a COMT lens. *Neuroscience* 164(1):72–87. doi:10.1016/j.neuroscience.2009.05.014
30. Ashburner J, Friston KJ (2000) Voxel-based morphometry—the methods. *NeuroImage* 11(6 Pt 1):805–821
31. Liu ME, Hong CJ, Liou YJ, Tsai YL, Hsieh CH, Tsai SJ (2008) Association study of a functional catechol-O-methyltransferase polymorphism and executive function in elderly males without dementia. *Neurosci Lett* 436(2):193–195. doi:10.1016/j.neulet.2008.03.018
32. Liu ME, Huang CC, Yang AC, Tu PC, Yeh HL, Hong CJ, Liou YJ, Chen JF et al (2014) Catechol-O-methyltransferase Val158Met polymorphism on the relationship between white matter hyperintensity and cognition in healthy people. *PLoS One* 9(2):e88749. doi:10.1371/journal.pone.0088749
33. Mitaki S, Isomura M, Maniwa K, Yamasaki M, Nagai A, Nabika T, Yamaguchi S (2013) Apathy is associated with a single-nucleotide polymorphism in a dopamine-related gene. *Neurosci Lett* 549:87–91. doi:10.1016/j.neulet.2013.05.075
34. Teng EL, Hasegawa K, Homma A, Imai Y, Larson E, Graves A, Sugimoto K, Yamaguchi T et al (1994) The Cognitive Abilities Screening Instrument (CASI): a practical test for cross-cultural epidemiological studies of dementia. *Int Psychogeriatr/IPA* 6(1):45–58 discussion 62
35. Fiocco AJ, Lindquist K, Ferrell R, Li R, Simonsick EM, Nalls M, Harris TB, Yaffe K (2010) COMT genotype and cognitive function: an 8-year longitudinal study in white and black elders. *Neurology* 74(16):1296–1302. doi:10.1212/WNL.0b013e3181d9edba
36. Erickson KI, Kim JS, Suever BL, Voss MW, Francis BM, Kramer AF (2008) Genetic contributions to age-related decline in executive function: a 10-year longitudinal study of COMT and BDNF polymorphisms. *Front Hum Neurosci* 2:11. doi:10.3389/neuro.09.011.2008
37. Kunzle H (1975) Bilateral projections from precentral motor cortex to the putamen and other parts of the basal ganglia. An autoradiographic study in *Macaca fascicularis*. *Brain Res* 88(2):195–209
38. Ilinsky IA, Jouandet ML, Goldman-Rakic PS (1985) Organization of the nigrothalamocortical system in the rhesus monkey. *J Comp Neurol* 236(3):315–330. doi:10.1002/cne.902360304
39. Ruiz JR, Castillo R, Labayen I, Moreno LA, Fuentes MG, Lamuno DG, Alvarez Granda JL, Lucia A et al (2010) Individual and combined effects of ApoE and MTHFR 677C/T polymorphisms on cognitive performance in Spanish adolescents: the AVENA study. *J Pediatr* 156(6):978–984, 984 e971. doi:10.1016/j.jpeds.2009.12.018
40. Ferry AT, Ongur D, An X, Price JL (2000) Prefrontal cortical projections to the striatum in macaque monkeys: evidence for an organization related to prefrontal networks. *J Comp Neurol* 425(3):447–470
41. Haber SN, Kim KS, Maily P, Calzavara R (2006) Reward-related cortical inputs define a large striatal region in primates that interface with associative cortical connections, providing a substrate for

- incentive-based learning. *J Neurosci* 26(32):8368–8376. doi:10.1523/jneurosci.0271-06.2006
42. Powell EW, Leman RB (1976) Connections of the nucleus accumbens. *Brain Res* 105(3):389–403
 43. Yeterian EH, Van Hoesen GW (1978) Cortico-striate projections in the rhesus monkey: the organization of certain cortico-caudate connections. *Brain Res* 139(1):43–63
 44. Zhang MY, Miao L, Li YS, Hu GY (2010) Meta-analysis of the methylenetetrahydrofolate reductase C677T polymorphism and susceptibility to Alzheimer's disease. *Neurosci Res* 68(2):142–150. doi:10.1016/j.neures.2010.06.011
 45. Dubois B, Feldman HH, Jacova C, Cummings JL, Dekosky ST, Barberger-Gateau P, Delacourte A, Frisoni G et al (2010) Revising the definition of Alzheimer's disease: a new lexicon. *Lancet Neurol* 9(11):1118–1127. doi:10.1016/s1474-4422(10)70223-4
 46. Selemon LD, Goldman-Rakic PS (1985) Longitudinal topography and interdigitation of corticostriatal projections in the rhesus monkey. *J Neurosci* 5(3):776–794
 47. Middleton FA, Strick PL (2002) Basal-ganglia 'projections' to the prefrontal cortex of the primate. *Cereb Cortex* 12(9):926–935
 48. Kelly RM, Strick PL (2004) Macro-architecture of basal ganglia loops with the cerebral cortex: use of rabies virus to reveal multisynaptic circuits. *Prog Brain Res* 143:449–459
 49. Backman L, Lindenberger U, Li SC, Nyberg L (2010) Linking cognitive aging to alterations in dopamine neurotransmitter functioning: recent data and future avenues. *Neurosci Biobehav Rev* 34(5):670–677. doi:10.1016/j.neubiorev.2009.12.008
 50. Volkow ND, Fowler JS, Wang GJ, Logan J, Schlyer D, MacGregor R, Hitzemann R, Wolf AP (1994) Decreased dopamine transporters with age in healthy human subjects. *Ann Neurol* 36(2):237–239. doi:10.1002/ana.410360218
 51. de Jong LW, van der Hiele K, Veer IM, Houwing JJ, Westendorp RG, Bollen EL, de Bruin PW, Middelkoop HA et al (2008) Strongly reduced volumes of putamen and thalamus in Alzheimer's disease: an MRI study. *Brain* 131(Pt 12):3277–3285. doi:10.1093/brain/awn278
 52. Posadas I, Lopez-Hernandez B, Cena V (2013) Nicotinic receptors in neurodegeneration. *Curr Neuropharmacol* 11(3):298–314. doi:10.2174/1570159x11311030005
 53. Schliebs R, Arendt T (2011) The cholinergic system in aging and neuronal degeneration. *Behav Brain Res* 221(2):555–563. doi:10.1016/j.bbr.2010.11.058
 54. Hoth KF, Paul RH, Williams LM, Dobson-Stone C, Todd E, Schofield PR, Gunstad J, Cohen RA et al (2006) Associations between the COMT Val/Met polymorphism, early life stress, and personality among healthy adults. *Neuropsychiatr Dis Treat* 2(2):219–225
 55. Huang CW, Tsai MH, Chen NC, Chen WH, Lu YT, Lui CC, Chang YT, Chang WN et al (2015) Clinical significance of circulating vascular cell adhesion molecule-1 to white matter disintegrity in Alzheimer's dementia. *Thromb Haemost* 114(6):1230–1240. doi:10.1160/th14-11-0938
 56. Huang CW, Chang WN, Huang SH, Lui CC, Chen NC, Chang YT, Lee CC, Chang CC et al (2013) Impact of homocysteine on cortical perfusion and cognitive decline in mild Alzheimer's dementia. *Eur J Neurol* 20(8):1191–1197. doi:10.1111/ene.12159
 57. Cummings JL, Mega M, Gray K, Rosenberg-Thompson S, Carusi DA, Gornbein J (1994) The Neuropsychiatric Inventory: comprehensive assessment of psychopathology in dementia. *Neurology* 44(12):2308–2314
 58. Lachman HM, Papolos DF, Saito T, Yu YM, Szumlanski CL, Weinshilboum RM (1996) Human catechol-O-methyltransferase pharmacogenetics: description of a functional polymorphism and its potential application to neuropsychiatric disorders. *Pharmacogenetics* 6(3):243–250
 59. Cuingnet R, Gerardin E, Tessieras J, Auzias G, Lehericy S, Habert MO, Chupin M, Benali H et al (2011) Automatic classification of patients with Alzheimer's disease from structural MRI: a comparison of ten methods using the ADNI database. *NeuroImage* 56(2):766–781. doi:10.1016/j.neuroimage.2010.06.013