

Cite this: *Chem. Sci.*, 2015, 6, 5928

H-Rubies, a new family of red emitting fluorescent pH sensors for living cells†

Guillaume Despras,^{‡a} Alsu I. Zamaleeva,^{‡bf} Lucie Dardevet,^{cd} Céline Tisseyre,^{cd}
Joao Gamelas Magalhaes,^f Charlotte Garner,^a Michel De Waard,^{cde}
Sebastian Amigorena,^f Anne Feltz,^b Jean-Maurice Mallet^a and Mayeul Collot^{§*a}

Monitoring intracellular pH has drawn much attention due to its undeniably important function in cells. The widespread development of fluorescent imaging techniques makes pH sensitive fluorescent dyes valuable tools, especially red-emitting dyes which help to avoid the overcrowded green end of the spectral band. Herein, we present H-Rubies, a family of pH sensors based on a phenol moiety and a X-rhodamine fluorophore that display a bright red fluorescence upon acidification with pK_a values spanning from 4 to 9. Slight structural modifications led to dramatic changes in their physicochemical properties and a relationship between their structures, their ability to form *H*-aggregates, and their apparent pK_a was established. While molecular form H-Rubies can be used to monitor mitochondrial acidification of glioma cells, their functionalised forms were linked *via* click chemistry to dextrans or microbeads containing a near infrared Cy5 (Alexa-647) in order to provide ratiometric systems that were used to measure respectively the phagosomal and endosomal pH in macrophages (RAW 264.7 cells) using flow cytometry.

Received 27th March 2015

Accepted 13th July 2015

DOI: 10.1039/c5sc01113b

www.rsc.org/chemicalscience

Introduction

Intracellular pH plays many different and important roles in cellular activity and is especially involved in ion transport,¹ apoptosis,^{2,3} multidrug resistance⁴ and muscle contraction.^{5,6} Moreover, abnormal intracellular pH values are also associated with diseases such as Alzheimer's⁷ and cancer.^{8,9} Monitoring variations of intracellular pH in living cells is therefore of the utmost importance and is an essential parameter for studying phagocytosis,¹⁰ endocytosis¹¹ and consequently cellular

internalisation pathways. Fluorescence spectroscopy and fluorescence imaging techniques have many advantages including high sensitivity, high spatial and temporal resolution and are not destructive to the cells. As such, molecular fluorescent pH indicators have become indispensable tools for observing pH changes in cells. Although many fluorescent indicators have already been developed (for an extensive review see: Han and Burgess),¹² several factors have to be taken into account in order to achieve efficient use within cells, including solubility in biological media, hydrophobicity, photostability and brightness. Our recent efforts to develop functionalisable red emitting fluorescent sensors^{13–15} were driven by the increasing use of cells transfected with green or yellow fluorescent proteins (FPs), thus allowing multicolour imaging. Whilst recent progresses have been reported in the development of red emitting genetically encoded pH sensors,¹⁶ there is still a demand for efficient molecular red fluorescent indicators. Among red-shifted fluorescent pH sensors, cyanines suffer from a weak photo-stability. Benzoxanthene dyes like SNARE, act as ratiometric probes but generally suffer from weak quantum yields. In contrast, red-emitting BODIPYs have recently attracted special attention due to their photostability and high brightness.^{17,18} Having said this they tend to suffer from high lipophilicity making them inefficient for cellular experiments as their apparent pK_a shifts in lipophilic environment.¹⁹

In his review, Han *et al.*¹² pointed out that despite their advantageous spectral properties, pH probes based on rhodamine were not extensively developed.²⁰ Rhodamine-based pH

^aLaboratory of Biomolecules (LBM), UPMC Université Paris 06, Ecole Normale Supérieure (ENS), CNRS, UMR 7203, Paris F-75005, France. E-mail: mayeul.collot@unistra.fr

^bEcole Normale Supérieure, Institut de Biologie de l'ENS (IBENS), INSERM U1024, CNRS UMR 8197, Paris F-75005, France

^cInserm U836, LabEx Ion Channels, Science and Therapeutics, Grenoble Institute of Neuroscience, chemin fortuné ferrini, bâtiment Edmond Safra, 38042 Grenoble Cedex 09, France

^dUniversité Joseph Fourier, Grenoble, France

^eSmartox Biotechnology, Saint Martin d'Hères, France

^fINSERM U932, Institute Curie, 75248, Paris, Cedex 05, France

† Electronic supplementary information (ESI) available: Details of the organic synthesis, characterisations (HPLC, NMR, mass spectra) as well as measurements of their photophysical properties can be found in the supplementary information. See DOI: 10.1039/c5sc01113b

‡ Contributed equally to this work.

§ Current address: Laboratoire de Biophotonique et Pharmacologie, UMR 7213 CNRS, Université de Strasbourg, Faculté de Pharmacie, 74, Route du Rhin, 67401, Illkirch, France.



probes mostly rely on the spirolactam ring opening principle, generally yielding pH sensors with high dynamic ranges but low pK_a values as well as high hydrophobicity due to their neutrally charged OFF state.^{21–26}

A key criteria for a pH sensor is its pK_a value, which should be in the physiological range. While the cytosol and some other cellular compartments, such as the nucleus and endoplasmic reticulum maintain their pH at ~ 7.2 , endosomes, lysosomes and secretory vesicles on the other hand are acidic environments with the pH ranging from 4.5 to 6.7. Conversely, alkaline pH can be found in mitochondria (~ 8),²⁷ phagosomes of dendritic cells^{28,29} and neutrophils.³⁰ As such, a collection of pH probes with a large range of pK_a values is required in order to extend the scope of their application and thus a straightforward method of tuning their pK_a values without tedious chemical modifications would be a necessity. Finally, the large majority of fluorescent pH sensors do not offer an orthogonal and specific site of attachment required for functionalisation. Many common pH probes are too lipophilic and tend to compartmentalise in hydrophobic domains of the cell, however, to date no alternative methods of functionalisation have been proposed. In this report we present the development of a new family of red-emitting pH probes based on X-rhodamines and a phenol moiety as the pH reporter (see abstract scheme). In addition to their pK_a values ranging from ~ 4 to ~ 9 , these ON–OFF type pH sensors, based on the PET (photoinduced electron transfer) quenching phenomena, exhibit high brightness in their acidic phenol form and can display very high turn ON of their fluorescence thanks to the formation of dark soluble *H*-aggregates in their OFF state. Among this new family, a number of H-Rubies were designed to bear a linker allowing the functionalisation of dextran and microbeads in order to measure the pH in living cells.

Results and discussion

Synthesis of phenolic X-rhodamines

ON–OFF pH probes generally require a pH-sensitive moiety whereby protonation/deprotonation modifies the quantum yield of a linked fluorophore either through PET (Photoinduced Electron Transfer) quenching phenomena or ICT (Internal Charge Transfer). Among these pH-sensitive moieties, phenol is the most popular as illustrated by the wide use of fluorescein and its derivatives: FITC, BCECF, *etc.* Moreover, the pK_a of phenols can be easily lowered and tuned to a biologically relevant range by introducing proper electron-withdrawing groups on the phenyl ring. Boens' group successfully converted an *ortho*-chlorophenol to obtain a pH-sensitive BODIPY with a pK_a of 7.6.³¹ Only few examples of phenolic rhodamines are given in the literature³² and none of those were exploited as pH probes, leading us to investigate the potential efficiency of these entities as fluorescent pH sensors. The red-emitting fluorophore X-rhodamine was chosen for its highly desirable spectral properties including a high molar absorption, high quantum yield and good photo-stability as well as its reduced hydrophobicity compared to BODIPY. Thus, an initial set of 9 X-rhodamines was synthesised from hydroxybenzaldehydes

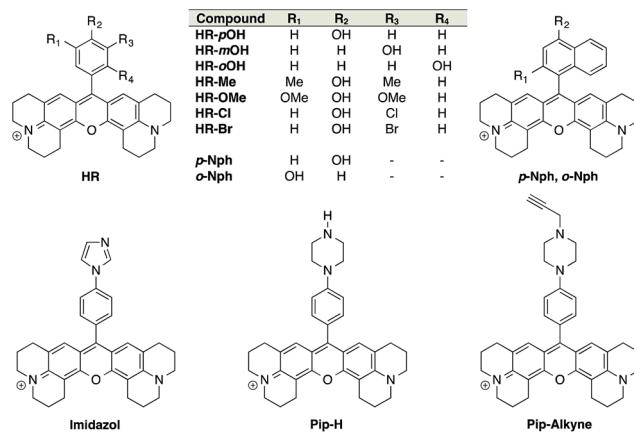


Fig. 1 Structures of the synthesised X-rhodamines and the first set of H-Rubies.

and hydroxynaphthaldehydes (for synthesis see ESI†). The use of phenyl-imidazol and (*N*-alkylated)-phenyl-piperazine^{33,34} as alternative pH-sensitive indicators was also explored giving rise to X-rhodamines: **Imidazole**, **Pip-H** and **Pip-Alkyne** (Fig. 1).

The spectral properties and pK_a values obtained for this first set of synthesised fluorophores are given in Table 1. Although X-rhodamine Imidazole did not behave as a fluorescent pH sensor (no significant variation of fluorescence intensity upon protonation), phenyl-piperazine and phenol-based X-rhodamines displayed clear pH sensitivity. Despite its physiologically relevant pK_a value and the capacity to be functionalised, **Pip-Alkyne** was not developed further as its dynamic range (3-fold) was found to be much lower than those obtained with phenol-based X-rhodamines.

Structure/properties relationship of H-Rubies

Absorption spectra of H-Rubies at different pH values provided us with information regarding their aggregation states (Fig. 2) since rhodamines can form different patterns of aggregations including *H*- and *J*-aggregates.^{35,36} The observed broadening of absorption spectra for **HR-*p*OH** clearly indicated the formation of non-defined aggregates at high pH values. This could be explained by the equilibrium between the zwitterionic phenolate form and the neutral, hydrophobic and planar quinone form (Fig. 2C). With regard to its isomers **HR-*m*OH** and **HR-*o*OH**, the neutral quinone forms cannot be formed due to the impossible delocalization of the electrons in the **HR-*m*OH** form and a twisted structure imposed by hindered sterical effect in **HR-*o*OH**; therefore, their absorption spectra only display slight changes upon deprotonation with no sign of aggregation (Fig. 2A and B). Interestingly, absorption spectra of **HR-Br** at pH values above its pK_a exhibited a second band indicating formation of soluble *H*-aggregates (Fig. 2D). Basic forms of **HR-Cl** and **HR-Br** both form *H*-aggregates, the stabilisation of which could be attributed to intermolecular halogen bonding^{37,38} between the electron-rich oxygen of the phenolate and the halogen atom forming typical head to head *H*-aggregate dimers. It is also noted that H-Rubies that forms *H*-aggregates in their



Table 1 Spectral and physico-chemical properties of the first set of synthesised X-rhodamines (5 μM in MOPS 30 mM, 100 mM KCl)^a

| Compound | | $\lambda_{\text{abs,max}}$ (nm) | λ_{em}^d (nm) | $\text{Log } \epsilon$ ($\lambda_{\text{abs,max}}$) ($\text{M}^{-1} \text{cm}^{-1}$) | Φ | $\Phi_{\text{ON}}/\Phi_{\text{OFF}}$ | Dynamic range ^e | Dynamic range @ pH ± 1 pK _a ^f | pK _a |
|----------------------|------------------|------------------------------------|---------------------------------|---|------------------|--------------------------------------|-------------------------------|--|------------------|
| HR-<i>p</i>OH | ON ^b | 576 | 587 | 4.78 | 0.55 | 9 | 34 | 30 | 8.97 |
| | OFF ^c | 579 ^f | 598 | 4.53 | 0.06 | | | | ± 0.05 |
| HR-<i>m</i>OH | ON ^b | 578 | 602 | 4.70 | 0.30 | 3 | 132 | 75 | 9.33 |
| | OFF ^c | 577 | 603 | 4.63 | 0.11 | | | | ± 0.13 |
| HR-<i>o</i>OH | ON ^b | 581 | 603 | 4.89 | 0.75 | 3 | 866 | 460 | 9.68 |
| | OFF ^c | 579 | 603 | 4.69 | 0.27 | | | | ± 0.17 |
| HR-Me | ON ^b | 574 | 597 | 4.71 | 0.09 | High | 955 | 833 | 8.75 |
| | OFF ^c | N/A ^g | 598 | N/A ^g | N/A ^h | | | | ± 0.16 |
| HR-OMe | ON ^b | 577 | 598 | 4.72 | 0.22 | 8 | 302 | N/A ⁱ | N/A ⁱ |
| | OFF ^c | 576 | 600 | 4.74 | 0.03 | | | | |
| HR-Cl | ON ^b | 579 | 601 | 4.68 | 0.47 | High | 753 | 512 | 6.17 |
| | OFF ^c | 544 | 599 | 4.52 | N/A ^h | | | | ± 0.10 |
| HR-Br | ON ^b | 581 | 601 | 4.39 | 0.55 | High | 384 | 291 | 6.51 |
| | OFF ^c | 544 | 600 | 4.40 | N/A ^h | | | | ± 0.10 |
| <i>p</i>-Nph | ON ^b | 581 | 600 | 4.79 | 0.28 | 6 | 23 | 9.7 | 8.51 |
| | OFF ^c | 579 | 602 | 4.34 | 0.05 | | | | ± 0.17 |
| <i>o</i>-Nph | ON ^b | 584 | 604 | 4.43 | 0.77 | 8 | 337 | 166 | 8.73 |
| | OFF ^c | 576 | 604 | 4.46 | 0.10 | | | | ± 0.17 |
| Pip-H | ON ^b | 578 | 600 | 4.88 | 0.16 | 4 | 6 | 3.9 | 8.67 |
| | OFF ^c | 579 | 601 | 4.84 | 0.04 | | | | ± 0.07 |
| Pip-Alkyne | ON ^b | 577 | 600 | 4.98 | 0.34 | 2 | 3 | 1.9 | 4.95 |
| | OFF ^c | 579 | 602 | 4.45 | 0.15 | | | | ± 0.09 |
| Imidazole | ON ^b | 583 | 609 | 4.80 | 0.40 | N/A ^j | N/A ^j | N/A ^j | N/A ^j |
| | OFF ^c | 584 | 608 | N/A ^j | N/A ^j | | | | |

^a ϵ = molar extinction coefficient, λ = wavelength, Φ = quantum yield. ^b Protonated form: pH 4. ^c Deprotonated form: pH 10. ^d Excitation at 535 nm. ^e $[(I_{\text{max}} - I_{\text{min}})/I_{\text{min}}]$ with I = fluorescence intensity. ^f Fluorescence enhancement between ± 1 pH unit around the pK_a value. ^g Broad absorbance. ^h Non-fluorescent. ⁱ pK_a value was too high. ^j No pH sensitivity.

basic forms have significantly enhanced acidity. For example, **HR-Br** is 1000-times more acidic than **HR-*p*OH**. This difference in acidity cannot be exclusively attributed to the electronic withdrawing effect of the bromine atom. These results tend to suggest that *H*-aggregation stabilises the basic forms of H-Rubies and hence, enhances their acidity. In this line of thought, since aggregation is concentration dependent, absorbance spectra and titration curves of **HR-Br** were measured at different concentrations of dye ranging from 500 nM to 5 μM (see Fig. S3 and S4[†]). The results showed that aggregation of basic form occurred at concentration above 500 nM and impacted the pK_a which varied from 6.5 at 5 μM to 7.3 at 500 nM. Moreover at a concentration of 500 nM where no aggregation of the basic form occurs the fluorescence enhancement was diminished as the OFF state was only due to the PET quenching phenomenon. *H*-aggregates are virtually non-fluorescent and thus, for the H-Rubies that are able to undergo this type of aggregation, this property can confer impressive levels of fluorescence enhancement (dynamic range) between their basic and acidic forms making them promising pH sensor for bio-imaging purposes. By controlling the *H*-aggregation of fluorophores one can achieve highly sensitive fluorogenic systems with a pronounced turning ON of fluorescence upon de-aggregation. This principle has been successfully used for bioimaging of ligand–receptor interactions³⁹ and was also applied in monitoring intracellular pH with fluorogenic polymers.⁴⁰

Synthesis of functionalised H-Rubies

Despite the first phenol-based X-rhodamines yielding excellent results as fluorescent pH probes, the importance of the ability to functionalise such fluorescent sensors must be emphasised and thus, the basic principle was pushed further in order to develop

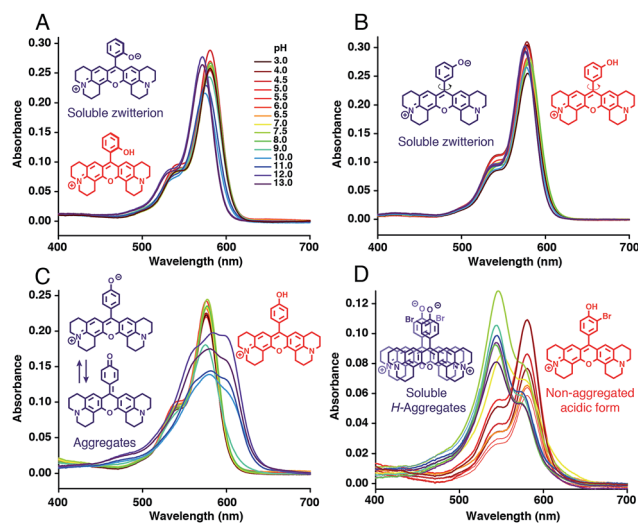


Fig. 2 Absorption spectra of (A) HR-*o*OH, (B) HR-*m*OH, (C) HR-*p*OH and (D) HR-Br at 5 μM in MOPS 30 mM, 100 mM KCl at different pH and their basic form (blue) and acidic form (red) structures.



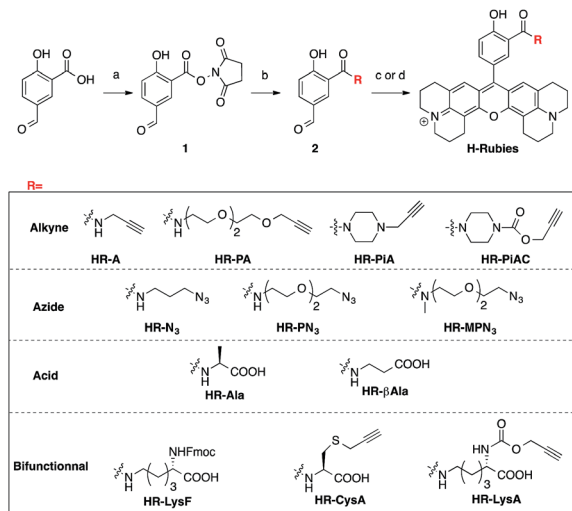


Fig. 3 Synthesis and structures of the functionalisable H-Rubies: (a) NHS, DCC, THF; (b) amine, DIEA, DMSO; (c) 8-hydroxyjulolidine, PTSA, propionic acid then *p*-chloranil, DCM/MeOH (1 : 1); (d) 8-hydroxyjulolidine, TfOH, DCM, then *p*-chloranil.

functionalisable H-Rubies. For this purpose, a linker was added at the *ortho* position of the phenol *via* an amide bond: a mild electron-withdrawing group that would ensure the conservation of a biologically relevant pK_a . For this new set of functionalisable H-Rubies, 5-formylsalicylic acid **1** was converted into its activated ester **2** onto which were condensed primary and

secondary amines bearing one or two orthogonal functions. Once the desirable aldehydes were obtained, they were transformed into their corresponding X-rhodamines with a custom optimized methodology allowing us to obtain the H-Rubies with yields of up to 93% (see ESI†). This new set of sensors can be categorised as follows: alkynes and azides, allowing linkage *via* bio-orthogonal Huisgen cycloaddition “click chemistry”; acids that can be coupled with amines and bifunctional H-Rubies, bearing two different functional groups (Fig. 3). Among the bifunctional H-Rubies that were developed is an Fmoc-protected Lysine H-Ruby (**HR-LysF**), which can be incorporated into a peptide sequence.

Structure/properties relationship of functionalisable H-Rubies

Once again, it was noticed that slight modifications of the base structure led to dramatic changes in the photophysical properties of H-Rubies such as epsilon, quantum yields and pK_a values which ranged from 4 to 8 (Table 2). The most notable differences were observed between secondary and tertiary amides whereby secondary amides appeared much more acidic than tertiary amides. To emphasise this phenomena, we synthesised **HR-PN₃** and its methylated tertiary amide equivalent **HR-MPN₃** and showed that the latter was 60-times less acidic. Moreover, absorption spectra of these functionalisable H-Rubies clearly showed different behaviours of their basic forms in water. While deprotonated tertiary amide H-Rubies showed

Table 2 Spectral and physicochemical properties of the functionalisable H-Rubies (5 μ M in MOPS 30 mM, 100 mM KCl)

| Compound | | $\lambda_{\text{abs,max}}$ (nm) | λ_{em}^c (nm) | $\text{Log } \epsilon$ ($\lambda_{\text{abs,max}}$) ($\text{M}^{-1} \text{cm}^{-1}$) | Φ | $\Phi_{\text{ON}}/\Phi_{\text{OFF}}$ | Dynamic range ^d | Dynamic range @ pH ± 1 pK_a^e | pK_a |
|---------------------|------------------|------------------------------------|---------------------------------|---|--------------------|--------------------------------------|-------------------------------|--|------------------|
| HR-A | ON ^a | 574 | 600 | 4.26 | 0.09 | 6 | 6 | 4.2 | 5.33 |
| | OFF ^b | 534 | 598 | 4.58 | 0.02 | | | | ± 0.13 |
| HR-PA | ON ^a | 580 | 602 | 4.87 | 0.46 | 1150 | 31 | 22 | 6.89 |
| | OFF ^b | 573 | 596 | 4.86 | 4×10^{-4} | | | | ± 0.04 |
| HR-PiA | ON ^a | 580 | 601 | 4.55 | 0.80 | 35 | 98 | 29 | 7.64 |
| | OFF ^b | 574 | 600 | 4.32 | 0.02 | | | | ± 0.10 |
| HR-PiAC | ON ^a | 580 | 601 | 4.86 | 0.64 | 40 | 86 | 45 | 7.68 |
| | OFF ^b | 575 | 602 | 4.69 | 0.02 | | | | ± 0.09 |
| HR-N ₃ | ON ^a | 580 | 600 | 4.43 | 0.25 | 28 | 88 | 74 | 3.96 |
| | OFF ^b | 523 | 596 | 4.43 | 0.01 | | | | ± 0.03 |
| HR-PN ₃ | ON ^a | 578 | 603 | 4.72 | 0.41 | 21 | 21 | 19 | 6.20 |
| | OFF ^b | 573 | 597 | 4.74 | 0.02 | | | | ± 0.03 |
| HR-MPN ₃ | ON ^a | 578 | 605 | 5.20 | 0.65 | 65 | 78 | 66 | 8.00 |
| | OFF ^b | 573 | 603 | 5.20 | 0.01 | | | | ± 0.03 |
| HR-Ala | ON ^a | 577 | 601 | 4.81 | 0.15 | 8 | 9 | 8.3 | 7.85 |
| | OFF ^b | 573 | 597 | 5.03 | 0.019 | | | | ± 0.03 |
| HR-βAla | ON ^a | 577 | 602 | 5.10 | 0.20 | 11 | 11 | N/A ^f | N/A ^f |
| | OFF ^b | 572 | 598 | 5.30 | 0.018 | | | | ± 0.03 |
| HR-LysF | ON ^a | 583 | 607 | 4.73 | 0.11 | 37 | 45 | 33 | 4.84 |
| | OFF ^b | 580 | 600 | 4.66 | 0.003 | | | | ± 0.10 |
| HR-CysA | ON ^a | 577 | 602 | 4.69 | 0.09 | N/A ^f | N/A ^f | N/A ^f | N/A ^f |
| | OFF ^b | 572 | 597 | 5.08 | 0.014 | | | | ± 0.04 |
| HR-LysA | ON ^a | 577 | 602 | 4.75 | 0.25 | 13 | 13 | 11 | 7.51 |
| | OFF ^b | 572 | 596 | 4.96 | 0.02 | | | | ± 0.04 |

^a Protonated form: pH 4. ^b Deprotonated form: pH 10. ^c Excitation at 535 nm. ^d $[(I_{\text{max}} - I_{\text{min}})/I_{\text{min}}]$ with I = fluorescence intensity. ^e Fluorescence enhancement between ± 1 pH unit around the pK_a value. ^f Complex titration curve.



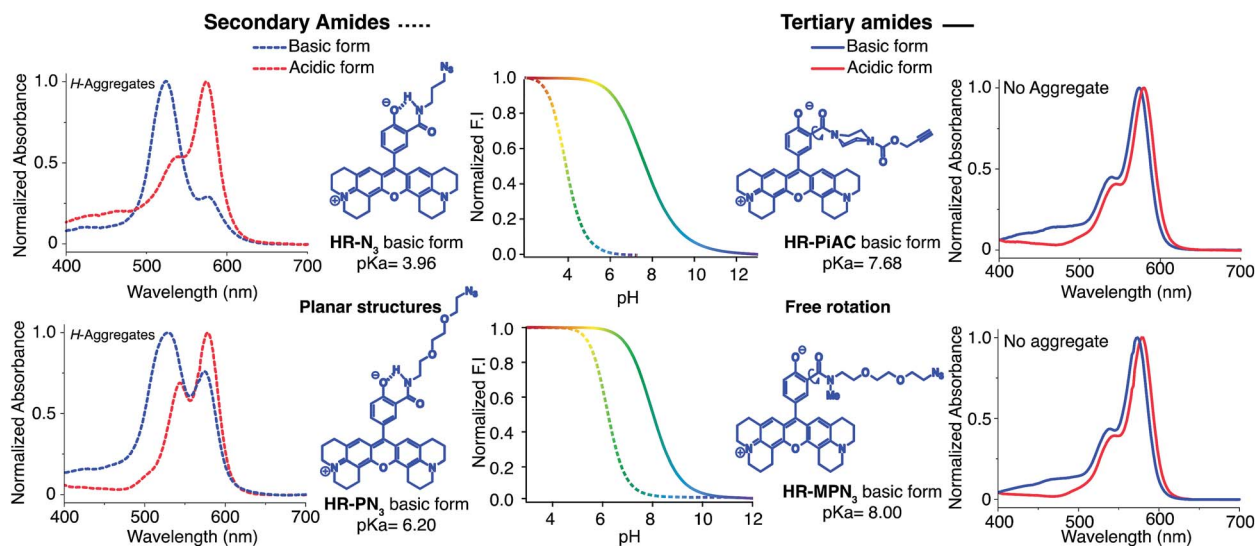


Fig. 4 Difference of acidity and *H*-aggregation capability between secondary amide *H*-Rubies (dashed lines) and tertiary amide *H*-Rubies (plain lines). Concentration of probes was 5 μM in MOPS 30 mM, 100 mM KCl, excitation wavelength at 535 nm.

slight hypsochromic shifts of their maximum absorption wavelengths (1–5 nm), absorption spectra of secondary amide *H*-Rubies displayed a second absorption band (530 nm) indicating typical formation of soluble *H*-aggregates.

These differences can be explained by the formation of a H-bond between the phenolate and the proton of the secondary amide whereby the former is stabilised and hence, the pK_a is lowered (Fig. 4). Moreover, the six membered ring formed *via* H-bonding leads to a constrained conformation which aids the formation of planar, head-to-head *H*-aggregates. As seen in our initial observations, the acidity of *H*-Rubies is enhanced by their ability to form *H*-aggregates in their OFF state (Fig. 4).

Imaging of acidic domains in living cells with molecular *H*-Rubies

The impressive physical and optical properties of *H*-Rubies lead us to investigate their ability to image acidic domains in living cells. After establishing their insensitivity towards biologically significant metals (Zn^{2+} , Mg^{2+} , Ca^{2+} , Fe^{3+} , Mn^{2+}) and their nontoxicity (see ESI Fig. S5[†] for LDH cytotoxicity assay), **HR-N₃**, **HR-Me**, **HR-Cl** and **HR-Br** were involved in cellular experiments (Fig. 5A). These probes were specifically chosen for their respective pK_a values: **HR-Me** served as a positive control since its pK_a is more than two units above maximum physiological pH, **HR-N₃** was expected to be a negative control since it has a pK_a of 4, whereas **HR-Cl** and **HR-Br** were expected to sense variations of pH within the cell (Fig. 5B). Firstly, Fischer's rat glioblastoma F98 cells (primary tumor) were incubated with the four dyes (1 μM) for only 20 min and visualised by confocal laser scanning microscopy. The obtained images indicated that these *H*-Rubies are cell-permeant and stain the mitochondria; this was confirmed by colocalisation experiments with mitotracker-green (see Fig. S6[†]). In a second time, flow cytometry assays with these cells showed a clear correlation between the observed fluorescence intensity of the cells and the measured pK_a of the

probes (Fig. 5B and C plain lines). Finally, we checked the pH sensitivity of these *H*-Rubies upon cytosolic acidification. The intracellular pH was decreased to pH 6 and flow cytometry assays were performed (Fig. 5C dashed lines). The results showed that albeit **HR-N₃** and **HR-Cl** displayed non-significant fluorescence enhancement (blue and green lines), **HR-Br** (orange line) displayed an impressive *in cellulo* response to this acidification ($\Delta\text{pH} = 1.4$, fluorescence enhancement: up to 13-fold). **HR-Me** also showed an interesting fluorescence enhancement (~ 5 -fold) but behaved in an inconsistent manner when the intracellular pH was alkalinised (Fig. S7[†]). Despite **HR-Br** cannot be used to determine absolute pH values *in cellulo* because of the effect of its concentration on its pK_a , its cell permeability combined with its high fluorescence enhancement in the physiological pH range make it an attractive tool for tracking mitochondrial acidification which is a important field in cell biology as it is involved in mitophagy that is associated to various pathologies including neurodegenerative and cardiovascular diseases.^{41,42}

Measurements of intraorganellar pH using functionalisable *H*-Rubies

To demonstrate the different biological applications of *H*-Rubies we developed two systems to measure sub-organellar pH in living cells. Our first approach aimed at the calibration of phagosomal pH in living cells using flow cytometry. As pH reporter, **HR-PiAC** was chosen for its useful properties in cellular experiments such as its high brightness, its high dynamic range (~ 80 -fold) and its pK_a value of 7.68 (Fig. 6A and B). 3 μm latex beads containing amino groups were combined with the bifunctional linker azido-PEG₄-NHS ester followed by double functionalisation using click chemistry with **HR-PiAC** and a pH-insensitive near infrared emitting dye, Alexa Fluor 647, to allow ratiometric measurements (Fig. 6C). It was noticed that the covalent binding of two dyes on the surface of the beads



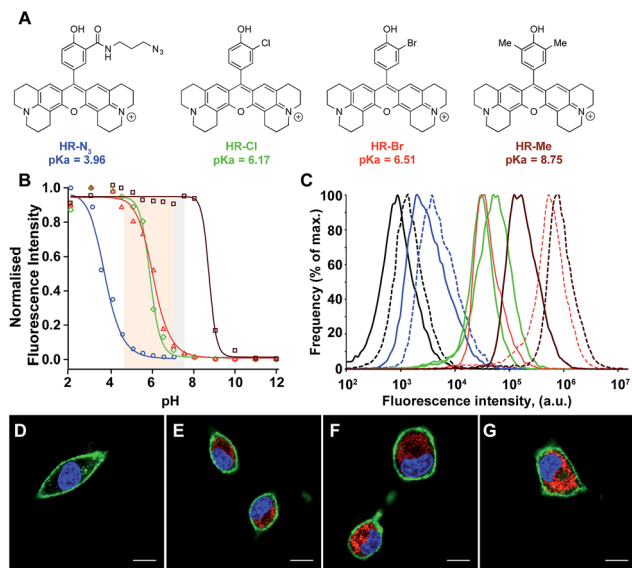


Fig. 5 (A) Structures and pK_a values of the H-Rubies used for cellular experiments. (B) pH titration curves (Hill equation fit) of HR- N_3 (blue), HR-Cl (green), HR-Br (red) and HR-Me (brown) at 5 μ M in MOPS (30 mM) KCl (100 mM), cytosolic and cellular acidic pH ranges are delimited with coloured areas. (C) Comparison of fluorescence intensity of F98 cells incubated for 20 min with 1 μ M of HR- N_3 (blue), HR-Cl (green), HR-Br (red) and HR-Me (brown) at pH 7.4 (plain lines) and pH 6 (dashed lines) assessed by flow cytometry. Each curve is an average of 3 independent measurements. The control corresponds to the intrinsic fluorescence of cells (black line). Bottom: laser scanning confocal microscopy images of F98 cells incubated for 20 min with 1 μ M of (D) HR- N_3 , (E) HR-Cl, (F) HR-Br, (G) HR-Me. The H-Rubies were visualized in red, the nuclei were stained with Hoechst (blue) and the membrane with Alexa 647-conjugated concanavalin A (green). Pictures show the three merged channels. Scale bars are 10 μ m.

influences the physicochemical properties of HR- PiAC , namely its dynamic range and its pK_a . This effect has already been noticed in our previous work involving a molecular fluorescent Ca^{2+} sensor linked to a quantum dot⁴³ and can be attributed to the proximity of the dye to the hydrophobic environment of the polystyrene bead that enhances the basal fluorescence of the sensor. Compared to the titration curve of the free dye, the fluorescence ratio of the two dyes obtained by flow cytometry shows an almost linear dependence when the pH is varied from 5 to 9. As a result, although these beads have a decreased sensitivity in the pH of physiological domain, it provides a ratiometric system which displays a pH sensitivity over a wider range when compared to a free HR- PiAC (Fig. 6D).

The dyes-modified beads were then added to a suspension of RAW 264.7 macrophages and incubated for 30 min at 37 $^{\circ}\text{C}$ to complete the process of phagocytosis. After several washes the cells were fixed and visualized by confocal microscopy to assess the efficiency of bead internalisation. Orthogonal view analysis of confocal sections shows partial internalisation of the beads by macrophages. As shown in Fig. 7, in addition to fully internalised beads, some beads are attached to the outer cell membrane. On average only 30% of beads were fully internalised by the cells. This could interfere with flow cytometric measurements of phagosomal pH because the laser-based

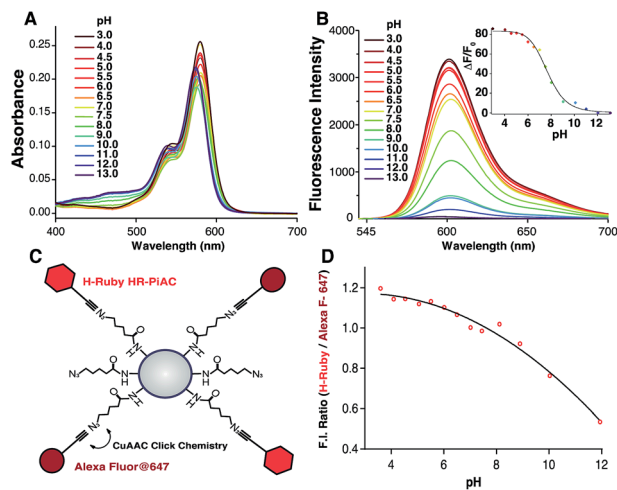


Fig. 6 Absorption (A) and emission spectra (B) of HR- PiAC (5 μ M, MOPS 30 mM, 100 mM KCl) at different pH (excitation wavelength = 535 nm), inset is the titration curve fitted with the Hill equation providing a pK_a of 7.68 ± 0.09 and an enhancement of fluorescence of ~ 80 -fold. Scheme of bead-based pH sensor, containing pH-sensitive dye HR- PiAC and pH-insensitive Alexa Fluor 647 (C); titration curve of the pH beads measured by flow cytometry (D).

technique in this case will identify all fluorescent objects, *i.e.* cells with internal and/or external beads. We, therefore, performed an additional modification of the beads by coating them with a biotinylated ovalbumin (OVA), *via* passive absorption. The coated beads, firstly, have a reduced non-specific binding to the cell surface and favour phagocytosis through the interaction between the mannosylated structure present on the surface of OVA⁴⁴ and the mannose receptors of macrophages.⁴⁵ Secondly, accessible biotin groups of OVA can be tagged by FITC-streptavidin.

For phagosomal pH measurement by flow cytometry, adherent RAW 264.7 macrophages were incubated for 30 min at 37 $^{\circ}\text{C}$ with the OVA-modified beads and let rest for 3 more hours for phagosomal maturation. Afterwards the cells were harvested and incubated with streptavidin-FITC that only binds to the non-internalised beads containing OVA-biotin. Two populations of phagocytic and non-phagocytic cells can be differentiated by the fluorescence intensity of Alexa Fluor 647 of the beads. A cell population with beads attached to the cell surface

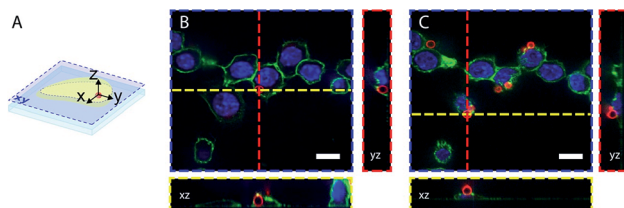


Fig. 7 Confocal microscopy images of fixed RAW 264.7 cells after bead phagocytosis. DAPI nuclear staining, concanavalin-Alexa 488 membrane staining and pH beads are in blue, green and red respectively. (A) illustrates the orthogonal views of the cell that allow differentiation of the internalized beads (B) and the beads attached to the cell surface (C). Scale bars are 10 μ m.



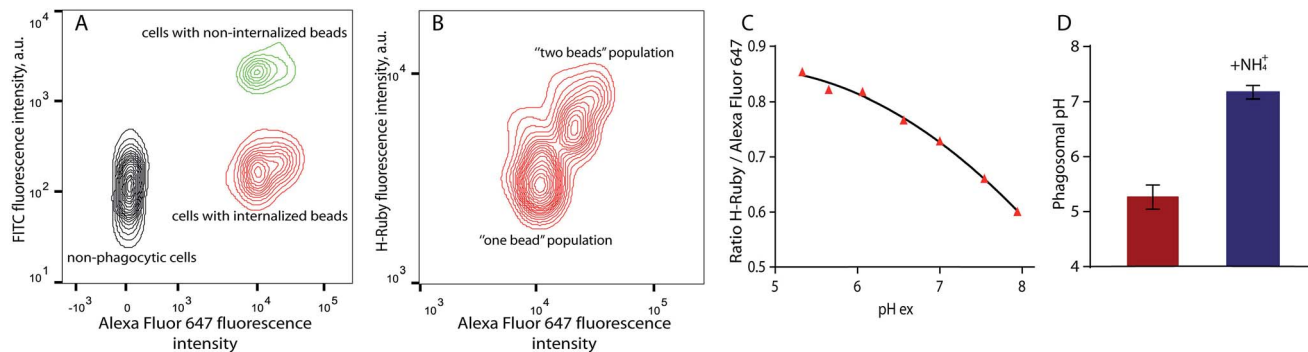


Fig. 8 Phagosomal pH measurement in RAW 264.7 cells by flow cytometry. (A) Density plot of the cells after bead internalisation showing three distinct populations: non-phagocytic cells, cells with internalised beads and cells with non-internalised beads on which a biotin – streptavidin – FITC interaction takes place; (B) the cells with only one internalised bead were used for analysis of phagosomal pH. (C) Typical calibration curve of H-Ruby/Alexa Fluor 647 ratio of the cells clamped at different pHs with the ionophore nigericin; (D) phagosomal pH (5.3 ± 0.2 , in red) in RAW 264.7 cells measured after 3 hours of phagosomes maturation NH_4Cl addition shows alkalinisation of phagolysosomes (7.2 ± 0.1 , in blue). The data represent the mean of 3 independent experiments \pm SD.

can be separated by the higher fluorescence intensity of FITC at extracellular pH (Fig. 8A). Further detailed analysis of the phagocytic population shows the presence of subpopulations according to the fluorescence intensities of Alexa Fluor 647 and H-Ruby: cells that have internalised one bead per cell exhibit a lower fluorescence intensity (Fig. 8B). For precise analysis of phagosomal pH the cells were gated on one bead population and a ratiometric calibration curve of phagosomal pH was obtained changing the external pH over the 5 to 8 range using a citric acid/HEPES buffer and imposing the same pH intracellularly using nigericin, a K^+/H^+ ionophore (Fig. 8C). Finally, to determine the phagosomal pH, the ratio of the mean fluorescence intensities of HRuby vs. Alexa Fluor 647 obtained from the intact cells was interpolated to the calibration curve yielding a phagolysosomal pH of 5.3 ± 0.2 . This result is in a good agreement with a previously published study where authors showed a phagosomal pH value of 5.22 ± 0.03 in RAW cells using FITC-sRBC particles.⁴⁶ Addition of the weak base $\text{NH}_4^+/\text{NH}_3$ caused fast alkalinisation, and demonstrated the intracellular localisation of the beads (Fig. 8D).

Another application of these newly synthesized H-Rubies is the calibration of endosomal pH by flow cytometry and to achieve this we used a polysaccharide dextran that is known to target the endolysosomal pathway.⁴⁷ 40 kDa dextran was converted to an alkyne containing dextran and was subsequently clicked to HR-PN₃ (Fig. 9A). In comparison to its parent molecular form HR-PN₃, the fluorescent pH-sensitive dextran displayed a slightly shifted apparent pK_a value (respectively 6.20 ± 0.03 and 6.77 ± 0.02 ; Fig. 9B) with a virtually non-fluorescent OFF state (see ESI[†]). Functionalisation did not significantly affect the fluorescence enhancement between pH 10 and 4 (respectively 21- and 19-fold) making this water-soluble polymer a valuable tool for monitoring endosomal pH. To demonstrate this, adherent RAW 264.7 cells were incubated for 30 min with HR-PN₃ dextran conjugate and let rest for 3 more hours. As shown in Fig. 9C, vesicles of different shapes and sizes could be observed inside the cells due to the movement and segregation of the dextran molecules between the endocytic organelles.⁴⁸

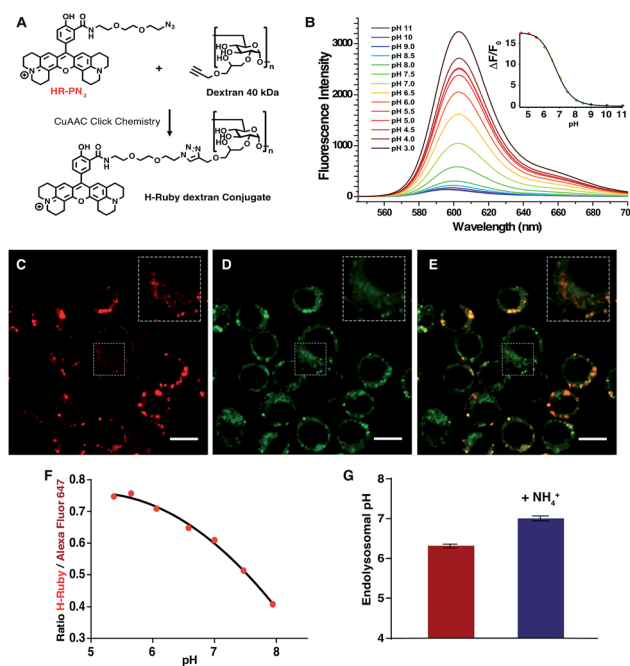


Fig. 9 (A) Synthesis of HR-PN₃ dextran conjugate via CuAAC Click Chemistry. (B) Emission spectra of HR-PN₃ dextran conjugate (MOPS 30 mM, 100 mM KCl) at different pH (excitation wavelength = 535 nm), inset is the titration curve fitted to the Hill equation yielding a pK_a of 6.77 ± 0.02 and an enhancement of fluorescence of ~ 18 -fold and 13 fold between ± 1 pH unit around the pK_a . (C–E) Confocal images of RAW 264.7 cells after incubation with 1 mg mL^{-1} HR-PN₃ dextran conjugate (C), co-stained by Lysotracker Green (D) and a merged image of two channels (E). HR-PN₃ dextran conjugate labels lysosomes (in red) that colocalises with Lysotracker, and endosomes that are shown in insets and do not colocalise with Lysotracker. Scale bars are 10 μm . (F) Typical calibration curve of H-Ruby/Alexa Fluor 647 ratio of the cells clamped at different pHs with the ionophore nigericin. (G) Endosomal pH (6.3 ± 0.05 , in red) in RAW 264.7 cells measured after 3 hours of incubation with HR-PN₃ dextran. NH_4Cl addition shows alkalinisation of endosomal organelles (7.0 ± 0.06 , in blue). The data represent the mean of 3 independent experiments \pm SD.



Addition of LysoTracker Green led to its partial colocalisation with **HR-PN₃ dextran conjugate** (Fig. 9C–E) suggesting that **HR-PN₃ dextran** accumulates both in the more acidic lysosomes and in the mildly acidic vesicles of the endocytic pathway as well. This observation is consistent with the flow cytometry experiments where, applying the same strategy as described above, the pH value of 6.3 ± 0.04 was obtained (Fig. 9F–G).

Methods and materials

LDH-cytotoxicity assay

CHO-K1 cells (20 000 per well) were seeded in 96 multiple well plates 24 h before the experiment. Cells (40 000 per well) were incubated with the fluorescent compounds in 100 μL DMEM for 2 hours at 37 °C. The incubation milieu was then replaced by 100 μL fresh DMEM containing 10% of cell-counting solution (Dojindo Laboratories) and incubated for a further 2 h at 37 °C. The absorbance measured at 450 nm had a direct relationship to the number of viable cells. Experiments were conducted in triplicate and repeated twice.

Cell culture

Undifferentiated malignant glioma rat (F98) and Chinese Hamster Ovary (CHO) cell lines (from ATCC) were maintained at 37 °C in 5% CO₂ in DMEM/F-12 nutrient medium (Invitrogen, Cergy Pontoise, France) supplemented with 2% (v/v) heat-inactivated fetal bovine serum (Invitrogen) and 100 $\mu\text{g mL}^{-1}$ streptomycin and 100 units per mL penicillin (Invitrogen). RAW 264.7 macrophages cell line was maintained at 37 °C in 5% CO₂ in DMEM nutrient medium (Gibco, Invitrogen) supplemented with 10% fetal calf serum (Eurobio, France).

Confocal microscopy

Cell cultures were incubated with the pH probes (in DMEM/F-12 nutrient medium only) for 20 min, and then washed twice with phosphate-buffered saline (PBS) alone. After 4 hours, the nucleus were stained with 60 $\mu\text{g mL}^{-1}$ Hoechst 34580 for 15 min, the cell cultures were then washed with PBS and the plasma membrane was stained with 30 $\mu\text{g mL}^{-1}$ Alexa 647-conjugated concanavalin A and the mitochondria stained with 50 nM mitotracker green for 5 min (stainings were purchased at Invitrogen, Cergy Pontoise, France). Cells were washed once more. Live cells were then immediately analysed by confocal laser scanning microscopy using a Zeiss LSM operating system. Alexa 647 (633 nm), Hoechst 34580 (405 nm), pH probes (561 nm) and mitotracker green (488 nm) were sequentially excited and emission fluorescence was collected.

To assess the efficiency of bead internalisation, the cells, after completing the process of phagocytosis (as described in “Organellar pH measurement by flow cytometry”), were plated on coverslips ($d = 12$ mm) coated with 10 $\mu\text{g mL}^{-1}$ fibronectin and incubated at 37 °C in 5% CO₂: the cell membrane was stained with 25 $\mu\text{g mL}^{-1}$ Alexa Fluor 488 – conjugated concanavalin (Invitrogen, USA) at 4 °C for 5 min and 4% paraformaldehyde was added for 20 min to fix the cells. The coverslips with the cells were then mounted on microscope

slides using a mounting medium DAPI-Fluoromount G (Southern Biotech, USA) and left at room temperature overnight. Imaging was performed on a spinning disk microscope. The pH-sensitive beads were excited with 561 nm laser line and detected with ET630/75 nm filter, DAPI was excited with 405 nm laser line and detected with ET460/50 nm band-pass filter and Concanavalin A-Alexa Fluor 488 was excited with 488 nm laser line and detected with D505/40 nm band-pass filter. Images were collected using microscope software Software: MetaMorph 7.8.2.0. The subsequent analysis of the images was conducted on an open source image processing program ImageJ.

Fluorescence activated cell sorting analyses – effect of the pH_i on the fluorescence intensity of the H-Rubies

For the dose-response curve, F98 cells were incubated with various concentrations of the H-Rubies in DMEM/F-12 culture medium without serum at 37 °C for 2 h. The cells were then washed with PBS to remove excess extracellular H-Ruby and were then treated with 0.05% Trypsin–EDTA for 2 min at 37 °C to detach cells from the surface, and centrifuged at 200 g in DMEM/F-12 culture medium before suspension in PBS. Flow cytometry analyses were performed with live cells using an Accuri C6 flow cytometer (BD Biosciences, Le Pont de Claix, France). For acquisition a 488 nm wavelength laser was used for H-Rubies excitation, the fluorescence emissions were recorded in a 584 ± 20 nm spectral detection channel. Data were obtained and analyzed using CFlow Sampler (BD Biosciences). Live cells were gated by forward/side scattering for a total of 10 000 events.

The pH_i of F-98 cells was modified using the pseudo-null calibration method describe by Chow *et al.*⁴⁹ F98 cells were incubated with 1 μM of H-Rubies in DMEM/F-12 culture medium without serum at 37 °C for 20 min. The cells were then washed with PBS to remove excess extracellular probe and were then treated with 0.05% Trypsin–EDTA for 2 min at 37 °C to detach the cells from the surface, and centrifuged at 200 g in DMEM/F 12 culture medium before suspension in culture medium. Just before the analysis the pseudo null solution were added (ratio of culture medium: pseudo-null solution 1 : 1) and the data were acquired immediately (within 30 s). Pseudo-null solutions were made according to the method of Chow *et al.* Six times concentrated standard solution was made by adding 1 M ammonium hydroxide and 1 M acetic acid to the basal solution (culture medium). This provided a set of pseudo-null solution as shown in Table S1 (see ESI†). Flow cytometry analyses were performed with live cells using an Accuri C6 flow cytometer (BD Biosciences, Le Pont de Claix, France). Data were obtained and analyzed using CFlow Sampler (BD Biosciences). Live cells were gated by forward/side scattering for a total of 10 000 events.

Functionalisation of the beads by H-Ruby

Polybead® Amino Microspheres 3.00 μm (Polysciences) were used. First the beads were washed with dH₂O. In order to convert the NH₂ groups on the beads surface to N₃ groups for further click chemistry reactions, 100 nmol of the bifunctional linker N₃–PEG₄–NHS was added to 100 μL of the beads



containing ~20 nmol of NH₂ groups and incubated at room temperature for 2 h. The alkyne-modified H-Ruby **HR-PIAC** and alkyne-containing Alexa Fluor 647 (Molecular Probes®) were then mixed with the bead solution in a ratio 1 nmol of NH₂ group: 10 nmol of H-Ruby: 2.5 nmol of Alexa Fluor 647. 5 µL of 25 mM CuSO₄·5H₂O and 5 µL of 25 mM sodium ascorbate were added to initiate a click-reaction. The mixture was incubated overnight at room temperature. The dyes modified beads were successively washed with 0.1 M EDTA, 10% ethanol and PBS to remove non-reacted dyes.

Organelle pH measurement by flow cytometry

Measurement of phagosomal or endosomal pH was performed using macrophages cell line RAW 264. The cells were plated on a Petri dish and at 80% confluence pH beads in a 4 : 1 ratio or 0.7 mg mL⁻¹ 40 kDa **HR-PN₃ dextran conjugate** and 0.3 mg mL⁻¹ 40 kDa Alexa Fluor 647 dextran conjugate were added and incubated 30 min at 37 °C to complete internalisation. Afterwards the non-internalised beads/dextran were washed out, fresh medium was added and the cells were let rest at 37 °C, 5% CO₂ for 3 more hours. For FACS analysis the cells were harvested and resuspended in CO₂-independent medium (GIBCO, Invitrogen). For NH₄⁺/NH₃ tests, 20 mM NH₄Cl was added to the extracellular medium and let to incubate for 3 min.

The calibration of phagosomal and endosomal pH was performed using the K⁺/H⁺ ionophore nigericin that, together with a high concentration of potassium in the buffer, equalises the intracellular and extracellular pH.⁵⁰ The cells containing internalised pH beads or dextran were resuspended in buffers containing 143 mM KCl, 1.17 mM MgCl₂, 1.3 mM CaCl₂, 5 mM glucose and 10 µM nigericin with defined pH buffers ranging from pH 5.0 to pH 8.0 with 0.5 increments. 20 mM citric acid was used for a buffer range of pH 5.0–6.5 and 20 mM (4-(2-hydroxyethyl)-1-piperazineethanesulfonic acid) (HEPES) – for buffers in the pH range 7.0–8.0. 0.05 µM DAPI was added to exclude the dead cells. After incubation for 5 min at RT the samples were analyzed by a flow cytometer (BD LSR Fortessa, BD Biosciences). For acquisition, a 532 nm wavelength laser was used for H-Rubies excitation, and its emission fluorescence was recorded in a 610 ± 20 nm spectral detection channel. For Alexa Fluor 647 a 640 nm wavelength laser was used for excitation and a 670 ± 30 nm spectral detection channel to record its emission fluorescence. Each time 10 000 events were acquired. For analysis, a population of live cells was gated by forward/side scatter, and within this population only the cells which have phagocytosed one pH bead were selected for precise pH determination.

Conclusion

We have developed a new set of efficient red-emitting fluorescent pH sensors based on PET quenching phenomena. H-Rubies exhibit specific pK_a values and a structure/properties relationship based on their ability to form non-emissive dark H-aggregates was established. Four non-functionalizable H-Rubies were chosen for cellular experiments and were shown to

cross the plasma membrane to compartmentalise in mitochondria. Among them, **HR-Br** displays a strong fluorescence enhancement upon acidification of mitochondria in live cells. Functionalizable H-Rubies were linked to a dextran polymer or to microbeads that were also decorated with a pH-insensitive dye leading to ratiometric pH probe systems. These systems were successfully used to measure phagosomal and endocytic pHs in live cells. The authors believe that this new family of fluorescent indicators, with their large choice of pK_a values and spectral properties specifically adapted to cellular imaging, represents a valuable toolkit for imaging pH variations in living cells. Moreover, their diverse functionalizable side arms allows them to be attached to particles, polymers and biomolecules such as peptides or antibodies for accurate pH readout of subcellular micro-domains.

Acknowledgements

G. D. and A. Z. benefitted of post-doctoral fellowships from the Pierre Gilles de Gennes foundation. C.T. was supported by the Région Rhône Alpes by an emergence fellowship. We would like to thank Jean-Marie Carpier (Institute Curie, U932) for his help with imaging, Dr. Sandrine Sagan and Dr Fabienne Burlina (Laboratoire des biomolécules, UMR CNRS 7203) for the toxicity assays. We also acknowledge PICT-IBiSA (Institute Curie), member of the France-BioImaging national research infrastructure. This work was supported by the Fondation Pierre-Gilles de Gennes (to S. A., A. F. and J. M. M.), the European Research Council (2013-AdG No. 340046), la Ligue Nationale contre le Cancer (EL 2014.LNCC/SA) and the French Agence Nationale de la Recherche (ANR P3N, nanoFRET2 grant to A. F., M. D. W. and J. M. M., and ANR-11-LABX-0015 to M. D. W.). This work is the subject of a European patent EP 13 199 575.5 – 1451 “fluorescent red emitting functionalizable pH probes”.

Notes and references

- 1 S. Grinstein and S. Dixon, *Physiol. Rev.*, 1989, **69**, 417.
- 2 R. A. Gottlieb, H. A. Giesing, J. Y. Zhu, R. L. Engler and B. M. Babior, *Proc. Natl. Acad. Sci. U. S. A.*, 1995, **92**, 5965.
- 3 R. A. Gottlieb, J. Nordberg, E. Skowronski and B. M. Babior, *Proc. Natl. Acad. Sci. U. S. A.*, 1996, **93**, 654.
- 4 S. Simon, D. Roy and M. Schindler, *Proc. Natl. Acad. Sci. U. S. A.*, 1994, **91**, 1128.
- 5 G. Lamb and D. Stephenson, *J. Physiol.*, 1994, **478**, 331.
- 6 H. Westerblad and D. Allen, *J. Physiol.*, 1993, **466**, 611.
- 7 A. A. Golabek, E. Kida, M. Walus, W. Kaczmarek, M. Michalewski and K. E. Wisniewski, *Mol. Genet. Metab.*, 2000, **70**, 203.
- 8 H. Izumi, T. Torigoe, H. Ishiguchi, H. Uramoto, Y. Yoshida, M. Tanabe, T. Ise, T. Murakami, T. Yoshida, M. Nomoto and K. Kohno, *Cancer Treat. Rev.*, 2003, **29**, 541.
- 9 B. A. Webb, M. Chimenti, M. P. Jacobson and D. L. Barber, *Nat. Rev. Cancer*, 2011, **11**, 671.
- 10 M. Miksa, H. Komura, R. Wu, K. G. Shah and P. Wang, *J. Immunol. Methods*, 2009, **342**, 71.



- 11 R. J. Lee, S. Wang and P. S. Low, *Biochim. Biophys. Acta, Mol. Cell Res.*, 1996, **1312**, 237.
- 12 J. Han and K. Burgess, *Chem. Rev.*, 2010, **110**, 2709.
- 13 M. Collot, C. Loukou, A. V. Yakovlev, C. D. Wilms, D. Li, A. Evrard, A. Zamaleeva, L. Bourdieu, J.-F. Leger, N. Ropert, J. Eilers, M. Oheim, A. Feltz and J.-M. Mallet, *J. Am. Chem. Soc.*, 2012, **134**, 14923.
- 14 M. Collot, C. Wilms, A. Bentkhayet, P. Marcaggi, K. Couchman, S. Charpak, S. Dieudonné, M. Hässler, A. Feltz and J.-M. Mallet, *elife*, 2015, **4**.
- 15 M. Collot, C. Wilms and J.-M. Mallet, *RSC Adv.*, 2014, **5**, 6993.
- 16 M. Tantama, Y. P. Hung and G. Yellen, *J. Am. Chem. Soc.*, 2011, **133**, 10034.
- 17 T. Jokic, S. M. Borisov, R. Saf, D. A. Nielsen, M. Kühl and I. Klimant, *Anal. Chem.*, 2012, **84**, 6723.
- 18 Y. Ni and J. Wu, *Org. Biomol. Chem.*, 2014, **12**, 3774.
- 19 X.-X. Zhang, Z. Wang, X. Yue, Y. Ma, D. O. Kiesewetter and X. Chen, *Mol. Pharmaceutics*, 2013, **10**, 1910.
- 20 Life technologies proposes a rhodamine based pH sensor, see <https://www.lifetechnologies.com/order/catalog/product/P36600>.
- 21 M. Tian, X. Peng, J. Fan, J. Wang and S. Sun, *Dyes Pigm.*, 2012, **95**, 112.
- 22 W. Zhang, B. Tang, X. Liu, Y. Liu, K. Xu, J. Ma, L. Tong and G. Yang, *Analyst*, 2009, **134**, 367.
- 23 H.-S. Lv, S.-Y. Huang, Y. Xu, X. Dai, J.-Y. Miao and B.-X. Zhao, *Bioorg. Med. Chem. Lett.*, 2014, **24**, 535.
- 24 L. Yuan, W. Lin and Y. Feng, *Org. Biomol. Chem.*, 2011, **9**, 1723.
- 25 Z. Li, S. Wu, J. Han and S. Han, *Analyst*, 2011, **136**, 3698.
- 26 A. Bender, Z. R. Woydziak, L. Fu, M. Branden, Z. Zhou, B. D. Ackley and B. R. Peterson, *ACS Chem. Biol.*, 2013, **8**, 636.
- 27 J. R. Casey, S. Grinstein and J. Orłowski, *Nat. Rev. Mol. Cell Biol.*, 2010, **11**, 50.
- 28 A. Savina, C. Jancic, S. Hugues, P. Guermonprez, P. Vargas, I. C. Moura, A.-M. Lennon-Duménil, M. C. Seabra, G. Raposo and S. Amigorena, *Cell*, 2006, **126**, 205.
- 29 A. Savina, A. Peres, I. Cebrian, N. Carmo, C. Moita, N. Hacohen, L. F. Moita and S. Amigorena, *Immunity*, 2009, **30**, 544.
- 30 A. W. Segal, *Annu. Rev. Immunol.*, 2005, **23**, 197.
- 31 W. Qin, M. Baruah, W. M. de Borggraave and N. Boens, *J. Photochem. Photobiol., A*, 2006, **183**, 190.
- 32 I. C. S. Cardoso, A. L. Amorim, C. Queirós, S. C. Lopes, P. Gameiro, B. de Castro, M. Rangel and A. M. G. Silva, *Eur. J. Org. Chem.*, 2012, **2012**, 5810.
- 33 Y. Tian, F. Su, W. Weber, V. Nandakumar, B. R. Shumway, Y. Jin, X. Zhou, M. R. Holl, R. H. Johnson and D. R. Meldrum, *Biomaterials*, 2010, **31**, 7411.
- 34 N. V. Marinova, N. I. Georgiev and V. B. Bojinov, *J. Photochem. Photobiol., A*, 2011, **222**, 132.
- 35 I. López Arbeloa and P. Ruiz Ojeda, *Chem. Phys. Lett.*, 1982, **87**, 556.
- 36 K. Adachi, K. Watanabe and S. Yamazaki, *Ind. Eng. Chem. Res.*, 2014, **53**, 13046.
- 37 A. Priimagi, G. Cavallo, P. Metrangolo and G. Resnati, *Acc. Chem. Res.*, 2013, **46**, 2686.
- 38 P. Politzer, P. Lane, M. C. Concha, Y. Ma and J. S. Murray, *J. Mol. Model.*, 2006, **13**, 305.
- 39 I. A. Karpenko, M. Collot, L. Richert, C. Valencia, P. Villa, Y. Mély, M. Hibert, D. Bonnet and A. S. Klymchenko, *J. Am. Chem. Soc.*, 2014, **137**, 405.
- 40 K. Zhou, H. Liu, S. Zhang, X. Huang, Y. Wang, G. Huang, B. D. Sumer and J. Gao, *J. Am. Chem. Soc.*, 2012, **134**, 7803.
- 41 H. Chen and D. C. Chan, *Hum. Mol. Genet.*, 2009, **18**, R169.
- 42 R. A. Gottlieb and R. S. Carreira, *Am. J. Physiol.: Cell Physiol.*, 2010, **299**(2), C203.
- 43 A. I. Zamaleeva, M. Collot, E. Bahembera, C. Tisseyre, P. Rostaing, A. V. Yakovlev, M. Oheim, M. de Waard, J.-M. Mallet and A. Feltz, *Nano Lett.*, 2014, **14**, 2994.
- 44 M. Thaysen-Andersen, S. Mysling and P. Højrup, *Anal. Chem.*, 2009, **81**(10), 3933.
- 45 L. Martinez-Pomarez, *J. Leukocyte Biol.*, 2012, **92**, 1177.
- 46 B. E. Steinberg, N. Touret, M. Vargas-Caballero and S. Grinstein, *Proc. Natl. Acad. Sci. U. S. A.*, 2007, **104**(22), 9523.
- 47 C. J. Galloway, G. E. Dean, M. Marsh, G. Rudnick and I. Mellman, *Proc. Natl. Acad. Sci. U. S. A.*, 1983, **80**, 3334.
- 48 E. P. Berthiaume, C. Medina and J. A. Swanson, *JCB*, 1995, **4**, 989.
- 49 S. Chow, D. Hedley and I. Tannock, *Cytometry*, 1996, **24**(4), 360.
- 50 J. Bond and J. Varley, *Cytometry*, 2005, **64A**, 43.

