

Insight into resistance mechanism of anaplastic lymphoma kinase to alectinib and JH-VIII-157-02 caused by G1202R solvent front mutation

Han Wang,¹⁻³ Yao Wang,¹⁻³
Wentao Guo,⁴ Bin Du,¹⁻³
Xiaobing Huang,¹⁻³ Riping
Wu,¹⁻³ Baoyu Yang,¹⁻³
Xiaoyan Lin,^{1-3,5} Yilan Wu⁶

¹Department of Medical Oncology, Fujian Medical University Union Hospital, Fuzhou, People's Republic of China; ²Stem Cell Research Institute, Fujian Medical University, Fuzhou, People's Republic of China; ³Fujian Key Laboratory of Translational Cancer Medicine, Fuzhou, People's Republic of China; ⁴School of Pharmacy, Wenzhou Medical University, Wenzhou, People's Republic of China; ⁵Graduate School of Education, Fujian Medical University, Fuzhou, People's Republic of China; ⁶School of Nursing, Fujian University of Traditional Chinese Medicine, Fuzhou, People's Republic of China

Correspondence: Yilan Wu
School of Nursing, Fujian University of Traditional Chinese Medicine, No 1, Huatuo Road, Fuzhou City 350001, Fujian Province, People's Republic of China
Tel +86 591 2286 1353
Fax +86 591 2286 1027
Email yilanwu@163.com

Xiaoyan Lin
Department of Medical Oncology, Fujian Medical University Union Hospital, No 29, Xinquan Road, Fuzhou City 350001, Fujian Province, People's Republic of China
Tel +86 591 8621 8043
Fax +86 591 8859 4563
Email 13950482366@qq.com

Background: Mutated anaplastic lymphoma kinase (ALK) drives the development of advanced non-small cell lung cancer (NSCLC). Most reported small-molecule inhibitors targeting the ALK domain do not display good inhibition of the G1202R solvent front mutation. The solvent front mutation was assumed to hinder drug binding. However, a different fact could be uncovered by the simulations reported in this study through a structural analog of alectinib (JH-VIII-157-02), which demonstrated potent effects against the G1202R mutation.

Methods: Molecular docking, conventional molecular dynamics (MD) simulations, free energy calculations, and umbrella sampling (US) simulations were carried out to make clear the principles of the binding preferences of alectinib and JH-VIII-157-02 toward ALK^{WT} and the ALK G1202R (ALK^{G1202R}) mutation.

Results: JH-VIII-157-02 has similar binding affinities to both ALK^{WT} and ALK^{G1202R} whereas it has a much lower binding affinity for alectinib to ALK^{G1202R}. Analysis of individual energy terms indicate the major variation involves the van der Waals and entropy terms. Structural analysis reveals that the conformational change of the ATP-binding glycine-rich loop was primarily responsible for the alectinib resistance, not JH-VIII-157-02. In addition, US simulations prove JH-VIII-157-02 has similar dissociative processes from both ALK^{WT} and ALK^{G1202R}, while alectinib is more easily dissociated from ALK^{G1202R} than from ALK^{WT}, thus indicating lesser residence time.

Conclusion: Both the binding affinity and the drug residence time should be emphasized in rational drug design to overcome the G1202R solvent front mutation in ALK resistance.

Keywords: ALK, G1202R, alectinib, JH-VIII-157-02, theoretical study, resistance mechanisms

Introduction

In 2007, the discovery of a fusion of echinoderm microtubule-associated protein-like 4 with anaplastic lymphoma kinase (EML4-ALK) in 3%–7% of patients non-small cell lung cancer (NSCLC) enabled the rapid clinical development and validation of ALK inhibitors as a viable, new cancer therapeutic agent.¹ Therefore, after only 4 years, crizotinib – an oral small-molecule inhibitor – was approved by the US Food and Drug Administration (FDA) for patients with ALK-positive NSCLC in 2011.^{2,3} Since then, several other ALK small-molecule inhibitors, such as ceritinib, alectinib, AP26113, and entrectinib, have also been identified and have entered clinical trials.⁴⁻⁷

Unfortunately, resistance mutations severely hamper the long-term success of ALK small-molecule inhibitors. To date, resistance mutations located in the ALK kinase domain have been identified, including L1152R, C1156Y, I1171T, F1174C, F1174L, L1196M, L1198F, G1202R, S1206Y, and G1269A.⁸⁻¹¹ Therefore, to understand such

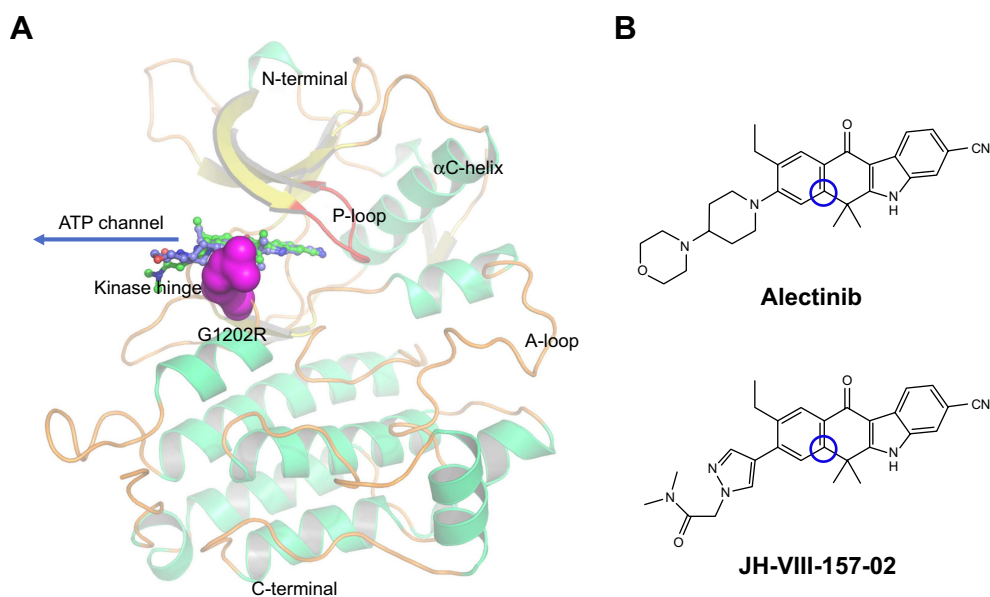


Figure 1 Overview of the kinase domain of ALK.

Notes: (A) Overview of the ALK kinase domain structure. G1202R solvent front mutation is colored magenta. Alectinib and JH-VIII-157-02 are stick models, colored blue and green, respectively. (B) Two-dimensional structures of alectinib and JH-VIII-157-02, where the blue cycle-marked atoms are the reaction atoms used in US simulations.

Abbreviations: A-loop, crucial activation loop; ALK, anaplastic lymphoma kinase; ATP, adenosine triphosphate; P-loop, ATP-binding glycine-rich loop.

resistance mechanisms is an important activity that will guide drug development and lead to future innovations in the treatment of NSCLC.^{12,13}

The kinase domains of ALK consist of a bilobal structure – a smaller N-terminal lobe and a larger C-terminal lobe – which together create the catalytic site to transfer a phosphate from adenosine triphosphate (ATP) to a substrate hydroxyl (Figure 1A).¹⁴ The N-terminal lobe adopts five-stranded antiparallel β -sheets, an important regulatory α C-helix, and an ATP-binding glycine-rich loop (P-loop). In addition, the juxtamembrane segment of the N-terminus forms a β -turn motif, which is unique for ALK. The C-terminal lobe contains eight α -helices (α D- α I) and two β -stranded sheets. The crucial activation loop (A-loop, residues 1,270–1,299) in the C-lobe adopts an overall relatively extended solvent-exposed conformation. The ATP binding site is located in the cleft between the two domains. Meanwhile, the two domains are connected by a flexible linker (kinase hinge).¹⁴ Although some resistance mechanisms of ALK mutations have been investigated, few theoretical studies have been conducted to make clear the detailed mechanism of the ALK G1202R solvent front mutation (ALK^{G1202R}).^{15–18}

Understanding and overcoming drug resistance is an important task for the future development of potent inhibitors targeting the ALK^{G1202R}, as James Black famously stated, “the best way to discover a new drug is to start with an old one.”¹⁹ In the present study, alectinib (RO5424802, also formerly known as CH5424802) and its structural analog

JH-VIII-157-02 were used to understand the drug-resistance mechanism of ALK^{G1202R} (Figure 1B).^{20,21} Alectinib is an oral drug, approved by the FDA in December 2015, for the treatment of patients with advanced ALK-positive NSCLC whose disease worsened after, or those who could not tolerate, treatment with crizotinib.²⁰ JH-VIII-157-02 is a structural analog of alectinib that is a potent inhibitor against the G1202R solvent front mutation reported by Hatcher et al.²¹ Thus, in this study, umbrella sampling (US) simulations in conjunction with conventional molecular dynamics (MD) simulations and Molecular Mechanics/Generalized Born Solvent Area (MM/GBSA) free energy calculations were applied to explore the dissociative processes and the interaction profiles of alectinib and JH-VIII-157-02 to ALK^{WT} and ALK^{G1202R}. This study may provide some clues to elucidate mutation-induced drug resistance at the molecular level and may have important implications for the rational design of novel ALK inhibitors to combat the drug resistance of the ALK G1202R solvent front mutation in NSCLC treatment.

Materials and methods

Protein structure preparation

The three-dimensional structure of human ALK^{WT}/alectinib (PDB ID: 3AOX) was retrieved from the Protein Data Bank (PDB), available at www.pdb.org.⁵ ALK^{G1202R} was constructed by using EasyModeller software.^{22,23} Furthermore, both the crystal structure and modeled structure were refined by PyMol software and the Assisted Model Building with

Energy Refinement 16 (Amber 16) simulation package, including removal of all non-bonded hetero-atoms, water molecules, addition of missing hydrogen atoms, and energy minimization. Then, the prepared structures were used to undertake molecular docking and MD simulations.

Construction of ALK^{G1202R}/alectinib, ALK^{WT}/JH-VIII-157-02, and ALK^{G1202R}/JH-VIII-157-02 models

Molecular modeling is a vital component in structure-based drug design. In this study, molecular docking – a method which predicts the preferred orientation of one molecule to another – was used to construct the ALK^{G1202R}/alectinib, ALK^{WT}/JH-VIII-157-02, and ALK^{G1202R}/JH-VIII-157-02 models by the latest version of the AutoDock 4.2.6 package.²⁴ AutoDock is a flexible docking program, which is one of the most cited docking software in the research community. It is especially effective for protein–ligand docking. Prior to the docking step, atomic radii of AutoDock4 were assigned to the prepared ALK^{WT} and ALK^{G1202R} protein. Meanwhile, Gasteiger partial charges were assigned to alectinib and JH-VIII-157-02. A grid of 60, 60, and 60 with a grid spacing of 0.375 was created in *x*, *y*, and *z* directions, respectively, surrounding the binding site. The affinity maps of ALK^{WT} and ALK^{G1202R} were calculated using AutoGrid4 software. The docking protocol was as follows: trials of 100 dockings which were clustered according to the root mean square deviation (RMSD) tolerance of 2.0 Å, a population size of 300, with a maximum number of evaluations of 25,000,000, mutation rate set to 0.02, and other parameters set to default settings. AutoDockTools and PyMol were used to analyze the docking results.^{24,25}

Conventional MD simulations

The Amber 16 simulation package was employed for both the conventional MD and US simulations. The X-ray crystal structure of ALK^{WT}/alectinib (PDB ID: 3AOX) and modeled structures of ALK^{G1202R}/alectinib, ALK^{WT}/JH-VIII-157-02, and ALK^{G1202R}/JH-VIII-157-02 were used as the initial structures for conventional MD simulations.⁵ Before conventional MD simulations, the ligands and proteins were constructed by antechamber and LEaP modules in the Amber 16 simulation package. The proteins were described by the Amber ff14SB force field.²⁶ Both alectinib and JH-VIII-157-02 employed the generalized Amber force field (GAFF), with partial charges assigned by a restrained electrostatic potential (RESP) fitting method based on the electrostatic potentials computed at the Hartree–Fock (HF) SCF/6-31G* level of theory.²⁷ The

box dimensions ensured that any protein atom was at least 20 Å away from the wall of the box with periodic boundary condition and also was solvated by TIP3P water molecules. Besides, appropriate numbers of sodium ions were added to neutralize all systems.

Prior to MD productive simulations, an equilibration protocol was carried out, including an initial minimization comprising 5,000 steps of steepest descent and 5,000 steps of conjugate gradient to the solvent molecules. Afterward, the side chains of proteins were relaxed with harmonic restraints of 10 kcal mol⁻¹ Å⁻² comprising 5,000 steps of steepest descent and 5,000 steps of conjugate gradient. Then, all molecules were relaxed in the water box, including 5,000 steps of steepest descent and 5,000 steps of conjugate gradient. Thereafter, all systems were heated from 0 K to 300 K using a time constant at a constant volume over a period of 500 ps. Subsequently, all systems were equilibrated at a constant pressure of 1 bar for 1 ns. Finally, each system was submitted to 100 ns conventional MD simulation in the isothermal-isobaric ensemble without any restraint. During the productive simulations, the Particle Mesh Ewald (PME) algorithm was utilized to consider the long-range electrostatic interactions of a periodic box with a cutoff of 10 Å, and the bonds involved in hydrogen atoms were constrained by the SHAKE algorithm.^{28,29} Pressure and temperature were maintained using the Langevin temperature scalings.³⁰ A time step of 2 fs was applied, and coordinates were saved every 20 ps for further analysis.

Free energy calculations

The MM/GBSA methodology has been widely used in elucidating the mechanisms of mutation-induced drug resistance.^{15,17,31–33} The MM/GBSA methodology computes the binding free energy (ΔG_{bind}) by utilizing a thermodynamic cycle that combines the molecular mechanical energies with the continuum solvent approaches.³⁴ The ΔG_{bind} in this study was computed by using the following equations:

$$\Delta G_{\text{bind}} = \Delta G_{\text{com}} - (\Delta G_{\text{rec}} + \Delta G_{\text{lig}}) \quad (1)$$

$$\Delta G_{\text{bind}} = \Delta E_{\text{MM}} + \Delta G_{\text{sol}} - T\Delta S \quad (2)$$

$$\Delta E_{\text{MM}} = \Delta E_{\text{int}} + \Delta E_{\text{vdW}} + \Delta E_{\text{elec}} \quad (3)$$

$$\Delta G_{\text{sol}} = \Delta G_{\text{GB}} + \Delta G_{\text{SA}} \quad (4)$$

where ΔG_{bind} in Equation (1) is the total binding free energy between the ligand and the receptor, which is also equal to

Equation (2). ΔG_{com} , ΔG_{rec} , and ΔG_{lig} are the free energies of the complex, receptor, and ligand, respectively. ΔE_{MM} and ΔG_{sol} represent the molecular mechanics interaction and solvation energies. ΔS represents the change of the conformational entropy upon ligand binding at temperature T . ΔE_{MM} can be split into three terms (Equation 3): intermolecular interaction energy (ΔE_{int}), van der Waals energy (ΔE_{vdw}), and electrostatic energy (ΔE_{elec}). In Equation (4), the solvation free energy (ΔG_{sol}) includes the polar (ΔG_{GB}) and non-polar (ΔG_{SA}) components. In this study, by using the single-trajectory strategy, ΔE_{int} is completely canceled between ligand, receptor, and complex. The polar component (ΔG_{GB}) was calculated using a Generalized Boltzmann (GB) model equal to 5.^{35,36} The interior and exterior dielectric constants were set to 1 and 80, respectively. The nonpolar component (ΔG_{SA}) accounts for the nonpolar contribution to solvation and was approximated by relating it to the solvent accessible surface area with a coefficient of 0.0072. The contribution of entropy ($-\Delta S$) to ΔG_{bind} was estimated by normal mode analysis using the NMODE module in the AmberTools 16 program.³⁷ The normal mode conformational entropy (S_{NM}) is a combination of the following three components:

$$S_{\text{NM}} = S_{\text{trans}} + S_{\text{rot}} + S_{\text{vib}} \quad (5)$$

In Equation (5), S_{trans} , S_{rot} , and S_{vib} represent changes in translational, rotational, and vibrational freedoms, respectively.

In the present study, trajectories from conventional MD simulations between 80 and 100 ns with 500 snapshots were applied to binding free energy calculations and free energy decompositions. Only a 100 snapshots for each system were used to estimate the contribution of the entropy due to the high computational demand.

US simulations

The equilibrated snapshots extracted from the trajectories were used as initial structures for the US simulations due to the G1202R solvent front mutation that may affect the binding geometries to alectinib and JH-VIII-157-02. In this study, the distance between one atom in the receptor (C_{α} in Ile-1171 of ALK^{WT} and ALK^{G1202R}) and another carbon atom in the ligand (blue cycle, Figure 1B) were selected as the reaction coordinate (RC).

The RCs of these systems were extended 20 Å from the initial distance and separated into 41 windows by a step of 0.5 Å. For each window, 8-ns MD simulations were applied to each window to guarantee the convergence for

each system. Additionally, the harmonic potential was used as the original potential for each window to create a thermodynamic state from one state to another. In this study, an elastic constant of 5 kcal mol⁻¹ Å⁻² was applied to all the windows to pull each ligand away from the binding cavity at a constant speed and force. The weighted histogram analysis method (WHAM) was carried out to calculate the potential of mean force (PMF) along the RCs.³⁸ Each RC was split into 2,000 bins, and the temperature was set to 300 K for the WHAM calculation.

Results and discussion

RMSD analysis of the receptor–ligand backbones

In this study, homologous modeling and molecular docking were used to generate the initial structures of ALK^{G1202R}/alectinib, ALK^{WT}/JH-VIII-157-02, and ALK^{G1202R}/JH-VIII-157-02. It is essential to investigate the structural stability of the three modeled complexes. Therefore, 100-ns conventional MD simulations were carried out to probe the structural stability of the modeled complexes and the crystal structure of ALK^{WT}/alectinib, selected as the control. To monitor the stability and flexibility of these systems, the RMSDs of the C_{α} atoms from their initial position were analyzed. As shown in Figure 2, the RMSD of protein backbones of all systems quickly reached a steady state after 20–50 ns of simulation. All ligands in each system reached equilibrium and stabilization during the last 50 ns. Moreover, superposition of the conformations between the initial structure and last snapshot show a similar pattern, with minor adjustments. However, it can also be observed that the conformational change of the modeled systems was larger than that of the crystal structure (Figure 3). Overall, these results can be explained as an induced-fit phenomenon that the modeled complexes undergo conformational change to reach the optimal binding mode, and the selection of the initial conformations were reasonable and satisfactory for further analysis.

Interestingly, RMSD for the heavy atoms of alectinib in ALK^{G1202R} was more fluctuant than for the other three systems during the whole conventional MD simulation. One might, therefore, conclude that alectinib in ALK^{G1202R} is more flexible to a degree when compared to the wild type (WT). Afterward, the root mean square fluctuations of the protein backbone of all subunits were calculated, and we noticed that the P-loop region of ALK^{G1202R}/alectinib exhibits amplified fluctuations when compared to other systems. Therefore, the distribution of the degree of opening of the P-loop, which represents the degree of opening of the binding pocket, was undertaken. The degree of opening was defined as the

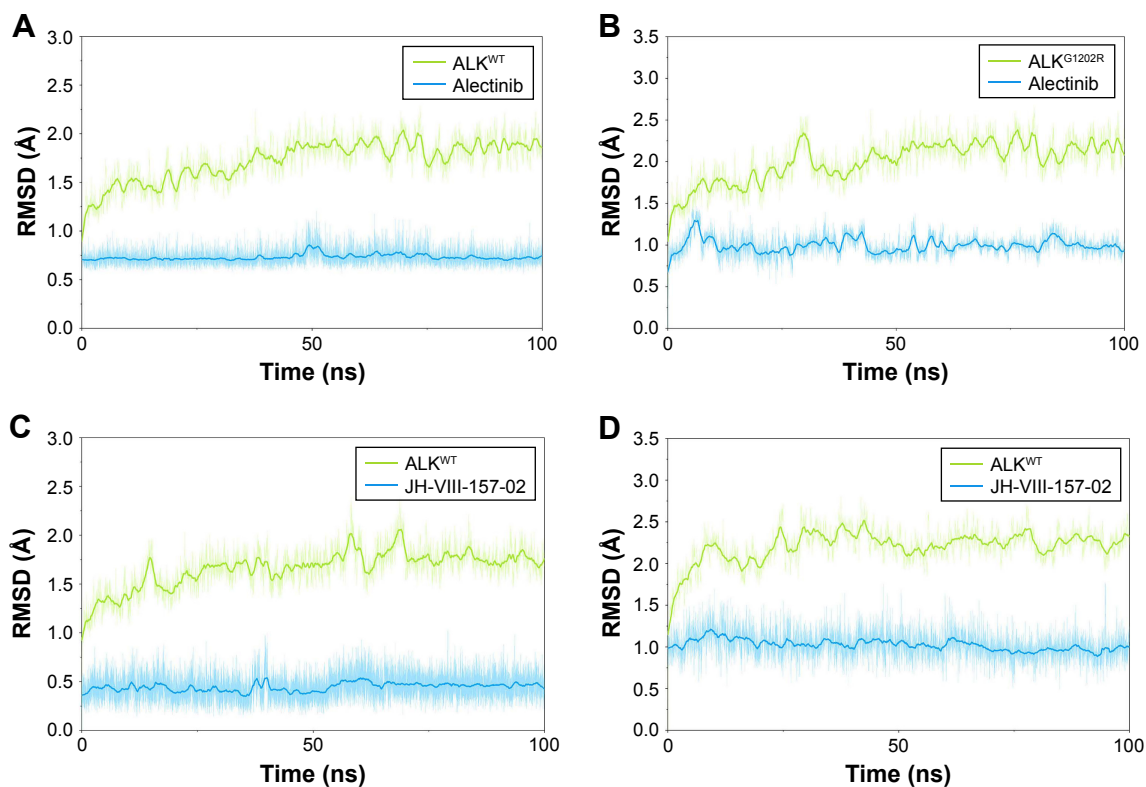


Figure 2 RMSD analysis of alectinib and JH-VIII-157-02 to ALK^{WT} and ALK^{G1202R}.

Notes: (A) ALK^{WT} and alectinib; (B) ALK^{G1202R} and alectinib; (C) ALK^{WT} and JH-VIII-157-02; and (D) ALK^{G1202R} and JH-VIII-157-02.

Abbreviations: ALK, anaplastic lymphoma kinase; ATP, adenosine triphosphate; RMSD, root mean square deviation.

center of mass of the P-loop to the center of mass of the ligand. As shown in Figure 4A and C, the P-loop region of ALK^{G1202R}/alectinib shows a higher degree of opening than the ALK^{WT}/alectinib because the G1202R mutation would

require rearrangement of the protein and rigid structure of alectinib. For comparison, the more flexible structure of JH-VIII-157-02 in ALK^{WT} and ALK^{G1202R} shows a similar distribution of the degree of opening (Figure 4B and D),

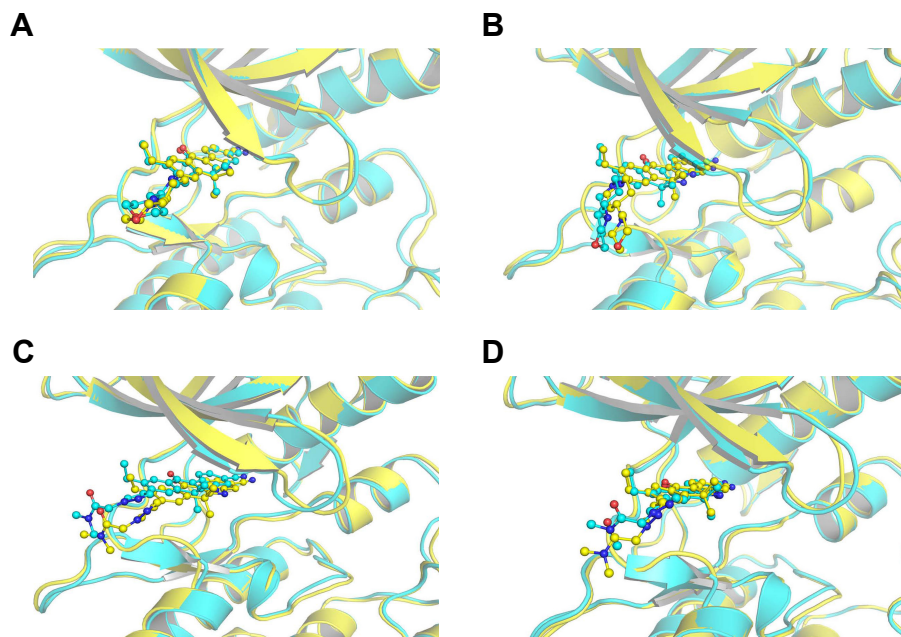


Figure 3 Alignment of the initial structure (cyan) and the last snapshot (yellow).

Notes: (A) ALK^{WT} and alectinib; (B) ALK^{G1202R} and alectinib; (C) ALK^{WT} and JH-VIII-157-02; and (D) ALK^{G1202R} and JH-VIII-157-02.

Abbreviations: ALK, anaplastic lymphoma kinase; ATP, adenosine triphosphate.

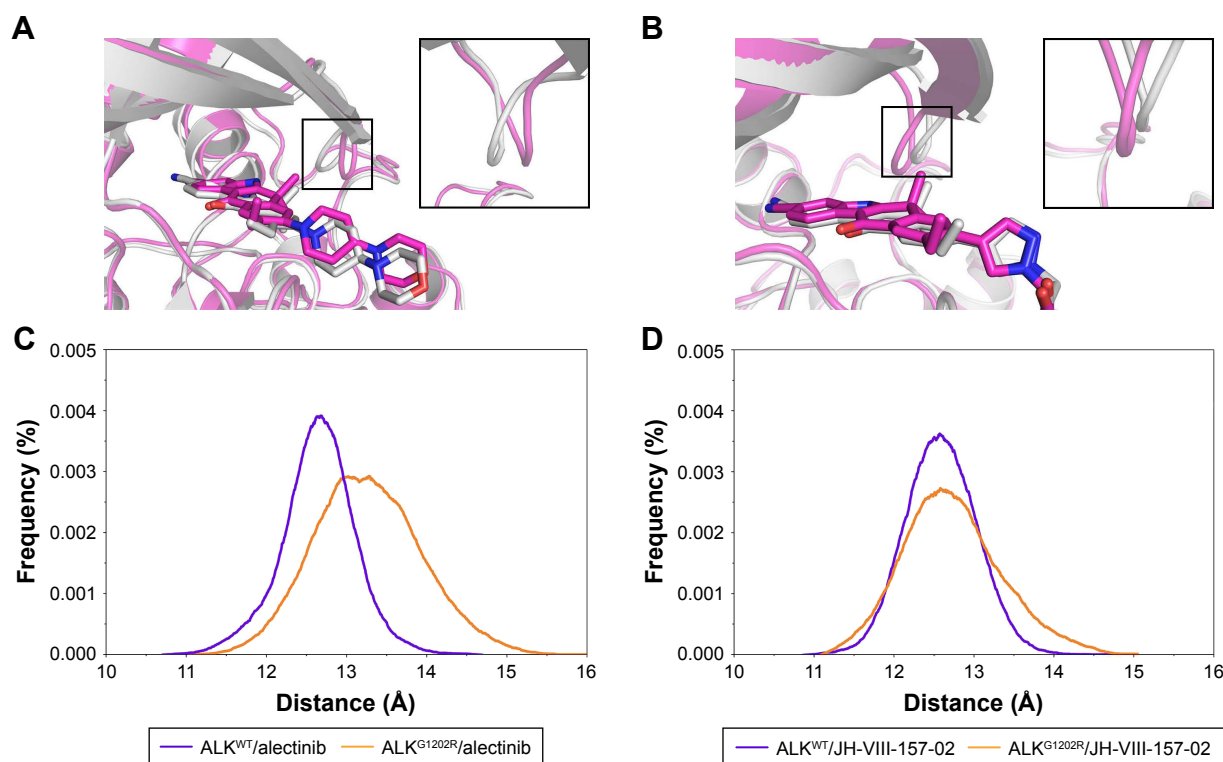


Figure 4 The distribution of the opening degree of the P-loop. The opening degree was defined as the center of mass of the P-loop to the center of mass of the ligand. **Notes:** (A) Alignment of the most populated conformations between ALK^{WT}/alectinib (gray) and ALK^{G1202R}/alectinib (magenta); (B) alignment of the most populated conformations between ALK^{WT}/JH-VIII-157-02 (gray) and ALK^{G1202R}/JH-VIII-157-02 (magenta); (C) the distribution of the opening degree of the P-loop between ALK^{WT}/alectinib and ALK^{G1202R}/alectinib; (D) the distribution of the opening degree of the P-loop between ALK^{WT}/JH-VIII-157-02 and ALK^{G1202R}/JH-VIII-157-02. **Abbreviations:** ALK, anaplastic lymphoma kinase; ATP, adenosine triphosphate; P-loop, ATP-binding glycine-rich loop.

indicating that a more flexible structure may overcome the G1202R solvent front mutation.

Free energy calculations

Conventional MD simulation is commonly used to undertake free energy calculations in the field of computational biophysics. Herein, the free energies were decomposed into the contributions of each energy term for all systems to analyze the energy contributions in determining the receptor–ligand association

on the basis of the MM/GBSA methodology. As shown in Table 1, the predicted binding affinities of ALK^{WT}/alectinib, ALK^{G1202R}/alectinib, ALK^{WT}/JH-VIII-157-02, and ALK^{G1202R}/JH-VIII-157-02 are -24.85 ± 7.77 , -13.59 ± 4.92 , -25.13 ± 7.02 , and -25.01 ± 9.01 kcal/mol, respectively. Obviously, it can be observed that the ΔG_{bind} shows significant correlation with experimental data, and various energy terms contribute differently to binding free energies for each system. Herein, we only discussed the van der Waals energy (ΔE_{vdW})

Table 1 Binding free energies of alectinib and JH-VIII-157-02 in ALK^{WT} and ALK^{G1202R} (kcal/mol)

Name	ALK ^{WT} /alectinib	ALK ^{G1202R} /alectinib	ALK ^{WT} /JH-VIII-157-02	ALK ^{G1202R} /JH-VIII-157-02
ΔE_{vdW}	-51.27 ± 2.76	-46.88 ± 2.79	-51.05 ± 3.79	-52.42 ± 3.66
ΔE_{elec}	-6.86 ± 2.36	-6.58 ± 3.61	-13.88 ± 5.73	-15.32 ± 6.73
ΔG_{GB}	24.07 ± 2.43	23.53 ± 3.15	32.77 ± 5.38	34.97 ± 5.59
ΔG_{SA}	-5.32 ± 0.26	-6.98 ± 0.21	-6.01 ± 0.44	-6.47 ± 0.31
$T\Delta S$	-14.53 ± 7.38	-21.32 ± 4.01	-13.04 ± 6.29	-14.23 ± 8.53
$\Delta E_{\text{enthalpy}}$	-39.38 ± 2.41	-34.91 ± 2.86	-38.17 ± 3.45	-39.24 ± 2.89
ΔG_{bind}	-24.85 ± 7.77	-13.59 ± 4.92	-25.13 ± 7.02	-25.01 ± 9.01
ΔW_{PMF}	-14.39 ± 0.76	-9.92 ± 0.42	-14.48 ± 0.46	-13.99 ± 1.21
IC_{50} (nM)	2	207	2	2

Abbreviations: ΔE_{vdW} , van der Waals energy; ΔE_{elec} , electrostatic energy; ΔG_{GB} , electrostatic contribution to solvation; ΔG_{SA} , non-polar contribution to solvation; $T\Delta S$, entropic contribution; $\Delta E_{\text{enthalpy}}$, binding free energy in the absence of entropic contribution; ΔW_{PMF} , potential of mean force depth based on 16–20 Å along the reaction coordinate; ΔG_{bind} , binding free energy; ALK, anaplastic lymphoma kinase; IC_{50} , half maximal inhibitory concentration.

and entropy term ($-T\Delta S$). As listed in Table 1, the decrease of van der Waals energy and the increase of entropy both lead to a decrease of the binding free energy for the G1202R solvent front mutation in ALK^{G1202R}/alectinib as compared to ALK^{WT}/alectinib. On comparison, there were no significant differences between ALK^{WT} and ALK^{G1202R} with regard to van der Waals energy and entropy for JH-VIII-157-02. Herein, combining the structural analysis that the P-loop confers a greater degree of opening of the binding pocket for the ALK^{G1202R}/alectinib system and the increase of the entropy calculated from the MM/GBSA method, it can be concluded that the binding of alectinib to the ALK G1202R solvent front mutation with a resultant more flexible P-loop and increased conformational entropy substantially leads to resistance to alectinib.

To further understand the receptor–ligand recognition patterns and emphasize the important energetic distributions to drug resistance, the decomposition of the receptor–ligand interaction was also generated by the MM/GBSA method. As shown in Figure 5A and B, the interactions between ALK^{WT} and alectinib are mainly mediated by Leu-1122, Met-1199, Leu-1198, Leu-1256, Val-1130, Gly-1202, Ala-1200, Leu-1196, Ala-1148, and Val-1180. The major favorable energetic contributions for ALK^{G1202R}/alectinib originate predominantly from the residues Met-1199, Val-1180, Val-1130, Leu-1198, Leu-1256, Ala-1200, Leu-1196, Leu-1198, Ala-1148, Arg-1202, Leu-1122, and Val-1130 (Figure 5C and D). Meanwhile, the major favorable energy contributions for ALK^{WT}/JH-VIII-157-02 are Leu-1122, Leu-1256, Met-1199, Val-1130, Leu-1198, Gly-1202, Leu-1196, Ala-1148, Val-1180, and Lys-1150 (Figure 5E and F). The 10 most contributed key residues for the ALK^{G1202R}/JH-VIII-157-02 are Leu-1122, Arg-1202, Met-1199, Leu-1198, Val-1130, Leu-1256, Ala-1200, Leu-1196, Ala-1148, and Val-1180 (Figure 5G and H). It can be seen that the predominant residues for all simulated systems are hydrophobic amino acids, and these systems share mostly identical key residues, located mainly in the hinge region and P-loop or near them. These results not only show the most contributed key residues, but also indicate that the enthalpy cannot be ignored and that entropy is also one of the major variations that govern binding free energy (Table 1).

Assessing G1202R resistance mechanisms by US simulations

Conventional MD simulations are not appropriate to simulate biological processes due to the fact that these processes usually occur on the microsecond to millisecond, or even

longer, timescales.³⁹ Therefore, biasing simulation methods have been found useful in enhanced MD sampling simulation techniques and improve the efficiency of conformational sampling, such as through accelerated MD simulation, replica exchange MD simulation, steered MD simulation, and the US simulation method.^{40–43} In this study, US simulation – a method which overcomes the problem of sampling trap into local minima by adding a bias to the potential function along certain RCs – was carried out to characterize the unbinding processes of alectinib and JH-VIII-157-02 in ALK^{WT} and ALK^{G1202R} to further clarify the resistance mechanisms.

In this study, the equilibrated snapshots extracted from the 100-ns conventional MD simulations trajectories were used as initial structures for a total of 1,312-ns US simulations. Guaranteeing the sampling convergence of the US simulations is inevitable; therefore, 8-ns US simulations for each window were conducted for all systems, and the convergence of PMF was checked after each nanosecond. As shown in Figure 6, all systems are convergent after roughly 5-ns US simulations, suggesting that 5-ns simulations for each window are sufficient to achieve convergent sampling (difference of PMFs <0.5 kcal/mol).

As listed in Table 1, it can be seen that the binding free energies of ALK^{WT}/alectinib, ALK^{G1202R}/alectinib, ALK^{WT}/JH-VIII-157-02, and ALK^{G1202R}/JH-VIII-157-02 predicted by US simulations are -14.39 ± 0.76 , -9.92 ± 0.42 , -14.48 ± 0.46 , and -13.99 ± 1.21 kcal/mol, respectively. These results can be correctly ranked and show good consistency with the experimental data. It should be noted that the binding free energies based on the PMF depth (ΔW_{PMF}) and standard binding free energy (ΔG_{bind}) from the MM/GBSA method are the same with respect to the corresponding systems – that is, not much effort should be taken to distinguish the ΔW_{PMF} and ΔG_{bind} in our US simulation strategy. The conventional MD simulations and binding free energy calculations make it hard to give the detailed free energies of a small-molecule dissociated along the unbinding pathways, therefore the PMF curves were used to clarify the different dissociative processes of alectinib and JH-VIII-157-02 in ALK^{WT} and ALK^{G1202R}. As shown in Figure 7, it is obvious that the PMF curves for alectinib in ALK^{WT} are different from that for ALK^{G1202R}. There are various peaks and valleys for ALK^{WT}/alectinib than for ALK^{G1202R}/alectinib. This finding indicated alectinib dissociates from ALK^{WT} and ALK^{G1202R} in a significantly different manner. Dissociating from ALK^{WT} needs to overcome a much higher free energy barrier than that from ALK^{G1202R}. Compared with alectinib, both JH-VIII-157-02 in ALK^{WT} and ALK^{G1202R} need to overcome a considerable free energy barrier.

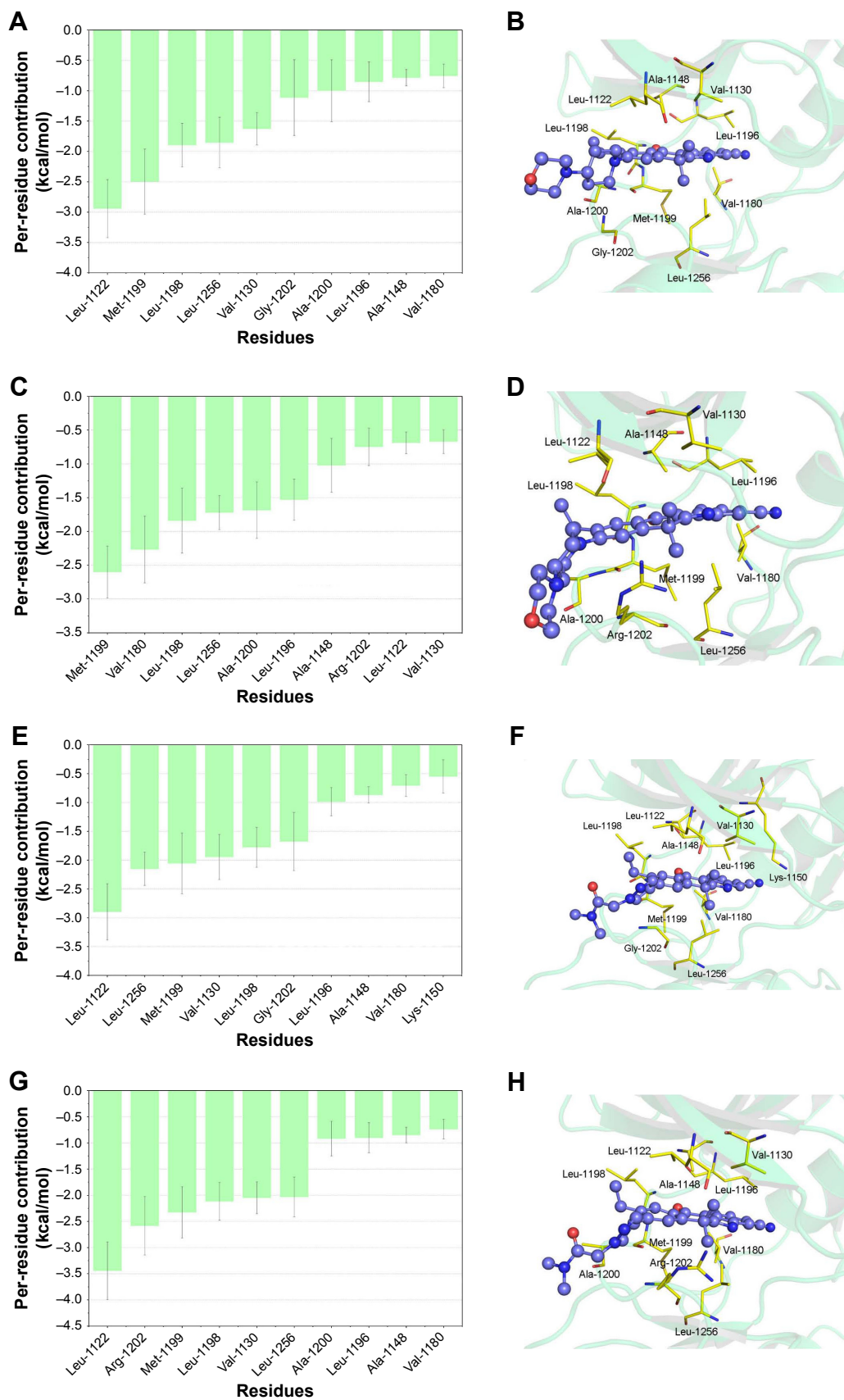


Figure 5 The 10 most contributed residues of alectinib and JH-VIII-157-02 to ALK^{WT} and ALK^{G1202R}.

Notes: The most contributed Per-residue interaction spectra of ALK^{WT}/alectinib (A), ALK^{G1202R}/alectinib (C), ALK^{WT}/JH-VIII-157-02 (E), and ALK^{G1202R}/JH-VIII-157-02 (G); structural analysis of ALK^{WT}/alectinib (B), ALK^{G1202R}/alectinib (D), ALK^{WT}/JH-VIII-157-02 (F), and ALK^{G1202R}/JH-VIII-157-02 (H).

Abbreviation: ALK, anaplastic lymphoma kinase.

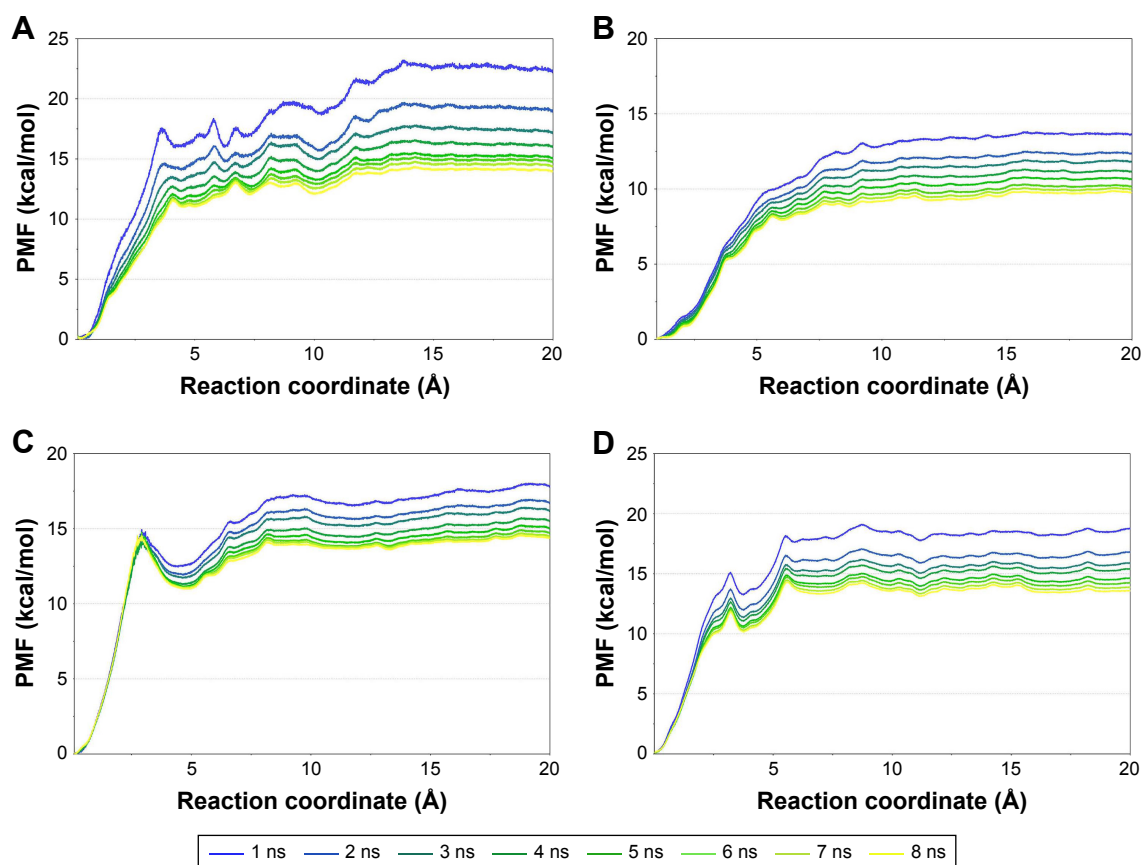


Figure 6 Convergence of the PMFs calculated for four simulated systems by US simulations. The PMFs gradually decrease with the increase in the simulation time. When the simulation time was lengthened to 5–8 ns for each window, the PMFs became convergent.

Note: Converged PMFs of ALK^{WT}/alectinib (A), ALK^{G1202R}/alectinib (B), ALK^{WT}/JH-VIII-157-02 (C), and ALK^{G1202R}/JH-VIII-157-02 (D).

Abbreviations: ALK, anaplastic lymphoma kinase; PMF, potential of mean force.

Furthermore, the alignment of all converged PMFs shows no increase at ~12 Å along the RCs (Figure 7). It is well known that the higher the curve, the more the energy released during ligand binding to the receptor. Similar

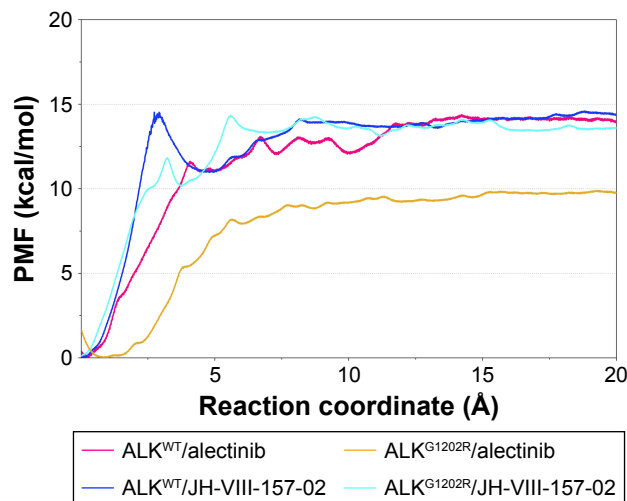


Figure 7 Comparison of the converged PMFs based on different complexes by US simulations.

Abbreviations: ALK, anaplastic lymphoma kinase; PMF, potential of mean force.

ΔW_{PMF} were clearly observed for ALK^{WT}/alectinib, ALK^{WT}/JH-VIII-157-02, and ALK^{G1202R}/JH-VIII-157-02, whereas the ΔW_{PMF} of ALK^{G1202R}/alectinib is much lower than for the other three systems. In other words, alectinib forms a higher affinity to ALK^{WT}, and the G1202R are able to cause resistance. In summary, drug resistance may be caused by the mutation-induced conformational change of the energetic distributions and dissociative processes between the inhibitors and the binding pocket.

MD simulations and drug discovery

MD simulations can offer insights into protein motion and often play important roles in drug discovery. For instance, nuclear magnetic resonance and X-ray crystallographic structures often show well-established binding pockets. However, sometimes, the models produced by these experimental techniques obscure other potentially drug-able sites. MD simulations is an excellent tool for identifying these cryptic sites. As an example, Schames et al⁴⁴ conducted an MD simulation of HIV integrase in 2004, and the simulation revealed a previously unidentified binding site that was not evident

from any of the available crystal structures.⁴⁴ As predicted, this crystal structure later displayed that known inhibitors do, in fact, bind to this binding site. Further development was subsequently applied to the discovery of a highly effective antiretroviral drug, raltegravir – the first FDA-approved HIV integrase inhibitor.⁴⁵

Despite the significant advances made in clinical trials for novel ALK agents, improvements are still required.⁴⁶ The dynamic and energetic aspects obtained in this study are crucial and helpful to undertake structure-based virtual screening to rationally develop next-generation inhibitors to overcome the drug resistance caused by G1202R in ALK.

Conclusion

In this study, molecular docking, conventional MD simulations, and MM/GBSA free energy calculations successfully modeled the G1202R solvent front mutation systems. Moreover, the binding free energies of alectinib and JH-VIII-157-02 in ALK^{WT} and ALK^{G1202R} were well predicted. The analysis of individual energy terms suggests that the major variations of alectinib binding between ALK^{WT} and ALK^{G1202R} are van der Waals energy and entropy term, compared to JH-VIII-157-02. Further structural analysis revealed that the conformational change of the P-loop plays an important role for alectinib in the resistance of the G1202R solvent front mutation. Additionally, US simulations were used to prove the principle of the binding preference of alectinib and JH-VIII-157-02 toward ALK^{WT} and ALK^{G1202R}. The ΔW_{PMF} derived from US simulations were consistent with the experimental data, and obvious energy barriers were observed from the PMF profile of alectinib toward ALK^{WT}. However, no energy barrier was observed toward ALK^{G1202R}, suggesting alectinib is more easily dissociated from ALK^{G1202R} than from ALK^{WT}, thus indicating lesser residence time. In contrast, the more flexible chemical structure of JH-VIII-157-02 has similar dissociative processes in both ALK^{WT} and ALK^{G1202R}. Our results unambiguously suggested that both the conformational change of the P-loop and the variance of the van der Waals interactions are responsible for the resistance of the ALK G1202R mutation due to the inherent planar and rigid chemical structure of alectinib. Overall, our study not only revealed the determinants of drug resistance but also provided a feasible way to predict the unbinding kinetics of protein–ligand systems that can potentially facilitate the rational design of highly selective inhibitors with longer residence time for the ALK G1202R mutation.

Acknowledgment

Financial support was received from the Natural Science Foundation of Fujian Province, People's Republic of China (grant no 2017J01831).

Disclosure

The authors report no conflicts of interest in this work.

References

- Soda M, Choi YL, Enomoto M, et al. Identification of the transforming EML4-ALK fusion gene in non-small-cell lung cancer. *Nature*. 2007; 448(7153):561–566.
- Christensen JG, Zou HY, Arango ME, et al. Cyto-reductive antitumor activity of PF-2341066, a novel inhibitor of anaplastic lymphoma kinase and c-Met, in experimental models of anaplastic large-cell lymphoma. *Mol Cancer Ther*. 2007;6(12 Pt 1):3314–3322.
- Cui JJ, Tran-Dubé M, Shen H, et al. Structure based drug design of crizotinib (PF-02341066), a potent and selective dual inhibitor of mesenchymal-epithelial transition factor (c-MET) kinase and anaplastic lymphoma kinase (ALK). *J Med Chem*. 2011;54(18):6342–6363.
- Marsilje TH, Pei W, Chen B, et al. Synthesis, structure-activity relationships, and in vivo efficacy of the novel potent and selective anaplastic lymphoma kinase (ALK) inhibitor 5-chloro-N2-(2-isopropoxy-5-methyl-4-(piperidin-4-yl)phenyl)-N4-(2-(isopropylsulfonyl)phenyl)pyrimidine-2,4-diamine (LDK378) currently in phase 1 and phase 2 clinical trials. *J Med Chem*. 2013;56(14):5675–5690.
- Sakamoto H, Tsukaguchi T, Hiroshima S, et al. CH5424802, a selective ALK inhibitor capable of blocking the resistant gatekeeper mutant. *Cancer Cell*. 2011;19(5):679–690.
- Katayama R, Khan TM, Benes C, et al. Therapeutic strategies to overcome crizotinib resistance in non-small cell lung cancers harboring the fusion oncogene EML4-ALK. *Proc Natl Acad Sci U S A*. 2011; 108(18):7535–7540.
- Menichincheri M, Ardini E, Magnaghi P, et al. Discovery of entrectinib: a new 3-aminopyridazole as a potent anaplastic lymphoma kinase (ALK), c-ros oncogene 1 kinase (ROS1), and pan-tropomyosin receptor kinases (Pan-TRKs) inhibitor. *J Med Chem*. 2016;59(7):3392–3408.
- Choi YL, Soda M, Yamashita Y, et al; ALK Lung Cancer Study Group. EML4-ALK mutations in lung cancer that confer resistance to ALK inhibitors. *N Engl J Med*. 2010;363(18):1734–1739.
- Sasaki T, Okuda K, Zheng W, et al. The neuroblastoma-associated F1174L ALK mutation causes resistance to an ALK kinase inhibitor in ALK-translocated cancers. *Cancer Res*. 2010;70(24):10038–10043.
- Friboulet L, Li N, Katayama R, et al. The ALK inhibitor ceritinib overcomes crizotinib resistance in non-small cell lung cancer. *Cancer Discov*. 2014;4(6):662–673.
- Shaw AT, Friboulet L, Leshchiner I, et al. Resensitization to crizotinib by the lorlatinib ALK resistance mutation L1198F. *N Engl J Med*. 2016;374(1):54–61.
- Iragavarapu C, Mustafa M, Akinleye A, et al. Novel ALK inhibitors in clinical use and development. *J Hematol Oncol*. 2015;8:17.
- Wu J, Savooji J, Liu D. Second- and third-generation ALK inhibitors for non-small cell lung cancer. *J Hematol Oncol*. 2016;9:19.
- Lee CC, Jia Y, Li N, et al. Crystal structure of the ALK (anaplastic lymphoma kinase) catalytic domain. *Biochem J*. 2010;430(3):425–437.
- Li J, Sun R, Wu Y, et al. L1198F mutation resensitizes crizotinib to ALK by altering the conformation of inhibitor and ATP binding sites. *Int J Mol Sci*. 2017;18(3). pii: E482.
- Nagasundaram N, Wilson Alphonse CR, Samuel Gnana PV, Rajaretnam RK. Molecular dynamics validation of crizotinib resistance to ALK mutations (L1196M and G1269A) and identification of specific inhibitors. *J Cell Biochem*. 2017;118(10):3462–3471.

17. Sun H, Li Y, Li D, Hou T. Insight into crizotinib resistance mechanisms caused by three mutations in ALK tyrosine kinase using free energy calculation approaches. *J Chem Inf Model*. 2013;53(9):2376–2389.
18. Kumar A, Shanthi V, Ramanathan K. Computational investigation and experimental validation of crizotinib resistance conferred by C1156Y mutant anaplastic lymphoma kinase. *Mol Inform*. 2015; 34(2–3):105–114.
19. Raju TN. The Nobel chronicles. 1988: James Whyte Black, (b 1924), Gertrude Elion (1918–1999), and George H Hitchings (1905–1998). *Lancet*. 2000;355(9208):1022.
20. McKeage K. Alectinib: a review of its use in advanced ALK-rearranged non-small cell lung cancer. *Drugs*. 2015;75(1):75–82.
21. Hatcher JM, Bahcall M, Choi HG, et al. Discovery of inhibitors that overcome the G1202R anaplastic lymphoma kinase resistance mutation. *J Med Chem*. 2015;58(23):9296–9308.
22. Fiser A, Sali A. Modeller: generation and refinement of homology-based protein structure models. *Methods Enzymol*. 2003;374:461–491.
23. Kuntal BK, Aparoy P, Reddanna P. EasyModeller: a graphical interface to MODELLER. *BMC Res Notes*. 2010;3:226.
24. Morris GM, Huey R, Lindstrom W, et al. AutoDock4 and AutoDockTools4: automated docking with selective receptor flexibility. *J Comput Chem*. 2009;30(16):2785–2791.
25. DeLano WL. *The PyMOL Molecular Graphics System*. Palo Alto, CA: DeLano Scientific; 2002.
26. Lindorff-Larsen K, Piana S, Palmo K, et al. Improved side-chain torsion potentials for the Amber ff99SB protein force field. *Proteins*. 2010;78(8):1950–1958.
27. Wang J, Wolf RM, Caldwell JW, Kollman PA, Case DA. Development and testing of a general amber force field. *J Comput Chem*. 2004; 25(9):1157–1174.
28. Essmann U, Perera L, Berkowitz ML, Darden T, Lee H, Pedersen LG. A smooth particle mesh Ewald method. *J Chem Phys*. 1995;103(19): 8577–8593.
29. Kräutler V, Van Gunsteren WF, Hünenberger PH. A fast SHAKE algorithm to solve distance constraint equations for small molecules in molecular dynamics simulations. *J Comput Chem*. 2001;22(5):501–508.
30. Izaguirre JA, Catarello DP, Wozniak JM, Skeel RD. Langevin stabilization of molecular dynamics. *J Chem Phys*. 2001;114(5):2090–2098.
31. Xue W, Pan D, Yang Y, Liu H, Yao X. Molecular modeling study on the resistance mechanism of HCV NS3/4A serine protease mutants R155K, A156V and D168A to TMC435. *Antiviral Res*. 2012;93(1): 126–137.
32. Liang D, Chen Q, Guo Y, Zhang T, Guo W. Insight into resistance mechanisms of AZD4547 and E3810 to FGFR1 gatekeeper mutation via theoretical study. *Drug Des Devel Ther*. 2017;11:451–461.
33. Srivastava HK, Sastry GN. Molecular dynamics investigation on a series of HIV protease inhibitors: assessing the performance of MM-PBSA and MM-GBSA approaches. *J Chem Inf Model*. 2012;52(11):3088–3098.
34. Miller BR 3rd, McGee TD Jr, Swails JM, Homeyer N, Gohlke H, Roitberg AE. MMPBSA.py: an efficient program for end-state free energy calculations. *J Chem Theory Comput*. 2012;8(9):3314–3321.
35. Onufriev A, Bashford D, Case DA. Modification of the generalized Born model suitable for macromolecules. *J Phys Chem B*. 2000;104(15): 3712–3720.
36. Weiser J, Shenkin PS, Still WC. Approximate atomic surfaces from linear combinations of pairwise overlaps (LCPO). *J Comput Chem*. 1999; 20(2):217–230.
37. Kongsted J, Ryde U. An improved method to predict the entropy term with the MM/PBSA approach. *J Comput Aided Mol Des*. 2009; 23(2):63–71.
38. Kumar S, Rosenber JM, Bouzida D, Swendsen RH, Kollman PA. The weighted histogram analysis method for free-energy calculations on biomolecules. I. The method. *J Comput Chem*. 1992;13(8):1011–1021.
39. Bernardi RC, Melo MC, Schulten K. Enhanced sampling techniques in molecular dynamics simulations of biological systems. *Biochim Biophys Acta*. 2015;1850(5):872–877.
40. Hamelberg D, Mongan J, McCammon JA. Accelerated molecular dynamics: a promising and efficient simulation method for biomolecules. *J Chem Phys*. 2004;120(24):11919–11929.
41. Zhou R. Replica exchange molecular dynamics method for protein folding simulation. *Methods Mol Biol*. 2007;350:205–223.
42. Park S, Schulten K. Calculating potentials of mean force from steered molecular dynamics simulations. *J Chem Phys*. 2004;120(13): 5946–5961.
43. Okamoto Y. Generalized-ensemble algorithms: enhanced sampling techniques for Monte Carlo and molecular dynamics simulations. *J Mol Graph Model*. 2004;22(5):425–439.
44. Schames JR, Henchman RH, Siegel JS, Sotriffer CA, Ni H, McCammon JA. Discovery of a novel binding trench in HIV integrase. *J Med Chem*. 2004;47(8):1879–1881.
45. Steigbigel RT, Cooper DA, Kumar PN, et al; BENCHMRK Study Teams. Raltegravir with optimized background therapy for resistant HIV-1 infection. *N Engl J Med*. 2008;359(4):339–354.
46. Su S, Wu YL. Clinical trials of tyrosine kinase inhibitors for lung cancer in China: a review. *J Hematol Oncol*. 2017;10(1):147.

Drug Design, Development and Therapy

Publish your work in this journal

Drug Design, Development and Therapy is an international, peer-reviewed open-access journal that spans the spectrum of drug design and development through to clinical applications. Clinical outcomes, patient safety, and programs for the development and effective, safe, and sustained use of medicines are the features of the journal, which

Submit your manuscript here: <http://www.dovepress.com/drug-design-development-and-therapy-journal>

Dovepress

has also been accepted for indexing on PubMed Central. The manuscript management system is completely online and includes a very quick and fair peer-review system, which is all easy to use. Visit <http://www.dovepress.com/testimonials.php> to read real quotes from published authors.