

# Role of hepcidin and iron metabolism in the onset of prostate cancer

BIN ZHAO<sup>1\*</sup>, RUIQIAN LI<sup>1\*</sup>, GANG CHENG<sup>2</sup>, ZHIYAO LI<sup>3</sup>, ZHIPING ZHANG<sup>4</sup>, JUN LI<sup>1</sup>, GUOYING ZHANG<sup>1</sup>, CHENGWEI BI<sup>1</sup>, CHEN HU<sup>1</sup>, LIBO YANG<sup>1</sup>, YONGHONG LEI<sup>1</sup> and QILIN WANG<sup>1</sup>

<sup>1</sup>Department of Urologic Surgery, Yunnan Cancer Hospital, The Third Affiliated Hospital of Kunming Medical University, Kunming, Yunan 650118; <sup>2</sup>Department of Orthopedic and Trauma Surgery, Yunnan Second People's Hospital, The Fourth Affiliated Hospital of Kunming Medical University, Kunming, Yunan 650021; Departments of <sup>3</sup>Ultrasonic Diagnosis and <sup>4</sup>Radiology, Yunnan Cancer Hospital, The Third Affiliated Hospital of Kunming Medical University, Kunming, Yunan 650118, P.R. China

Received February 25, 2017; Accepted December 7, 2017

DOI: 10.3892/ol.2018.8544

**Abstract.** The present study aimed to understand the roles of hepcidin and iron metabolism in the onset of prostate cancer. The prostate cancer LNCap, PC3 and DU145 cell lines were transfected with small interfering RNA (siRNA) targeting hepcidin to knockdown hepcidin expression in LNCap, PC3 and DU145 cells. The expression levels of hepcidin in prostate cancer and normal prostate RWPE-1 cells were detected by western blot analysis. Exogenous hepcidin was added into the hepcidin-silenced cell lines. Intracellular iron levels were detected using a fluorescence assay, and the proliferative and migratory capacities of cells were detected using the MTT and wound-healing assays, respectively. The apoptotic rate was measured using flow cytometry, and changes in the expression of the iron-export protein ferroportin on the cell membrane were detected by western blot analysis. Hepcidin expression in prostate cancer cells was significantly higher than that of normal prostate cells ( $P < 0.05$ ). Furthermore, the iron levels of hepcidin-silenced cells (hepcidin<sup>-ve</sup> groups) were significantly lower than those in the cells treated with exogenous hepcidin (hepcidin<sup>+ve</sup> groups) ( $P < 0.05$ ). The proliferative capacity of the hepcidin<sup>+ve</sup> cells significantly exceeded those of the hepcidin<sup>-ve</sup> groups ( $P < 0.05$ ) and increased over time. In the wound-healing assay, the number of hepcidin<sup>+ve</sup> cells present within the scratch sites increased compared with hepcidin<sup>-ve</sup> cells, indicating a higher migration rate. Additionally, the expression of ferroportin in the hepcidin<sup>-ve</sup> groups significantly exceeded that in

the hepcidin<sup>+ve</sup> groups ( $P < 0.05$ ). Hepcidin is involved in the onset of prostate cancer, most likely by reducing ferroportin expression and increasing intracellular iron levels to enhance the proliferation, migration and anti-apoptotic capacities of cancer cells.

## Introduction

Prostate cancer is a common male malignancy, and the second-leading cause of all cancer mortalities in men (1,2). Iron metabolism serves an important role in the growth, angiogenesis and metastasis of prostate cancer (3,4). Iron is trace element necessary for that is extensively involved in the growth and metabolism of the human body, as well as facilitating oxygen transport, exchange and tissue respiration (5,6). Iron has been widely considered to be the basic substance for the maintenance of tumor cell growth and development (7). Tumor progression can be affected by regulating the iron metabolism and reducing intracellular iron utilization, which may be a suitable strategy for anticancer therapy (8,9).

Hepcidin is a hormone-regulating molecule that is synthesized and secreted by liver cells and serves a vital role in maintaining the *in vivo* iron metabolic balance (10,11). Hepcidin exerts core regulatory effects on iron metabolism by reducing the release of intracellular free iron in the reticuloendothelial system and negatively regulating the metabolic balance of iron by decreasing its absorption in the duodenum (12). The mechanism of action of hepcidin has been investigated using animal models and patients with abnormal iron metabolism. Hepcidin-knockdown mice undergo iron overload, and mice and patients overexpressing hepcidin exhibit iron deficiency (13). Hepcidin expression in patients with cancer, and its role in iron metabolism, has attracted considerable attention (14,15). Hepcidin, which is regulated by its receptor ferroportin, transports intracellular free iron into the extracellular fluid (16). With low ferroportin expression, tumor cells produce additional free iron, making them more invasive (17).

The mechanism by which hepcidin is involved in prostate cancer remains unclear. In the present study, the roles of

---

*Correspondence to:* Professor Qilin Wang, Department of Urologic Surgery, Yunnan Cancer Hospital, The Third Affiliated Hospital of Kunming Medical University, 519 Kunzhou Road, Kunming, Yunan 650118, P.R. China  
E-mail: wangqilinyth@126.com

\*Contributed equally

**Key words:** hepcidin, iron, metabolism, prostate cancer

hepcidin and iron metabolism in the onset of prostate cancer were evaluated *in vitro*, aiming to provide valuable evidence for concerning hepcidin and its potential as a novel therapy target.

## Materials and methods

**Cell lines and reagents.** The prostate cancer LNCap, PC3 and DU145 cell lines were purchased from the Type Culture Collection of the Chinese Academy of Sciences (Shanghai, China). The prostate cell line RWPE-1 was purchased from JRDUN Biotechnology Co., Ltd. (Shanghai, China). Minimum essential medium (MEM) and fetal bovine serum (FBS) were obtained from Hyclone; GE Healthcare Life Sciences (Logan, UT, USA). Penicillin and streptomycin were obtained from North China Pharmaceutical Co., Ltd. (Shijiazhuang, China). Trypsin and dimethyl sulfoxide were provided by Sigma-Aldrich; Merck KGaA (Darmstadt, Germany). The ELISA kit, hepcidin protein and ferroportin antibodies were purchased from Newgen Biotech USA Inc. (Dallas, TX, USA). Lipofectamine<sup>®</sup> 2000 reagent was obtained from Invitrogen; Thermo Fischer Scientific, Inc. (Waltham, MA, USA).

**Cell culture.** LNCap, PC3 and DU145 cells were cultured in MEM containing 10% FBS, 1% penicillin and 1% streptomycin, placed in an incubator at 37°C with 5% CO<sub>2</sub> and saturated humidity, and passaged when ~85% confluence was reached.

**Cell transfection.** LNCap, PC3 and DU145 cells were digested, counted, inoculated into 6-well plates at a density of 2.5x10<sup>5</sup> cells/well and incubated at 37°C with 5% CO<sub>2</sub> and saturated humidity until 80-90% confluence was reached. Next, the cells were transfected with small interfering RNA (siRNA) using Lipofectamine<sup>®</sup> 2000 transfection reagent. siRNAs were synthesized by Invitrogen (Thermo Fisher Scientific, Inc.); siRNA2 was synthesized to knock down hepcidin expression and siRNA1 was injected as the negative control. The sequences of the siRNA were as follows: siRNA2 sense, 5'-UGGUAUUUCCUAGGGUACAdTdT-3' and antisense, 5'-UGUACCCUAGGAAAUACUAdTdT-3'; siRNA1 sense, 5'-CUUACGCUGAGUACUUCGAdTdT-3' and antisense, 5'-UCGAAGUACUCAGCGUAAAGdTdT-3', with a final siRNA concentration of 20 μl transfected. The culture medium was replaced with complete medium following incubation of the transfected cells for 4 h, and prostate cancer cell lines in which hepcidin gene was silenced were obtained through screening and passage. After 48 h, protein was extracted for western blot analysis.

**Western blot analysis.** Cells were lysed using radioimmunoprecipitation assay buffer [50 mM (pH 7.5) Tris-HCl, 150 mM NaCl, 1% NP-40, 0.5% sodium deoxycholate, 0.1% SDS], ultrasonicated and centrifuged at 12,000 x g and 4°C for 10 min. Protein concentration was determined with the bicinchoninic acid assay. Each sample (50 μg/lane) was resolved by 10% SDS-PAGE, followed by transfer onto a nitrocellulose membrane. Next, the membrane was blocked with 5% skimmed milk at room temperature for 1 h. Membranes were incubated with hepcidin-25 (1:500; Abcam, Cambridge, MA,

USA) and β-actin (1:5,000; Sigma-Aldrich; Merck KGaA) primary antibodies overnight at 4°C, followed by horseradish peroxidase-conjugated goat anti-rabbit IgG secondary antibody (1:1,000; Origene Technologies, Inc., Beijing, China) at 37°C for 1 h. Membranes were scanned following development with an enhanced chemiluminescence substrate kit (Shanghai Yeasen Biotechnology Co., Ltd., Shanghai, China). The relative expression of protein was analyzed by densitometry analysis using Quantity-One 1-D analysis software (version 4.6.9; Bio-Rad Laboratories, Inc., Hercules, CA, USA) following internal reference calibration.

**Detection of intracellular iron levels by fluorescence assay.** siRNA targeted at hepcidin (si-hepcidin)-transfected LNCap, PC3 and DU145 cells were digested with trypsin and collected following centrifugation at 12,000 x g and 4°C for 10 min, with the concentrations adjusted to 1x10<sup>6</sup>/ml. Subsequently, the cells were divided into the hepcidin<sup>+ve</sup> (which contained and addition of 500 nM exogenous hepcidin; Newgen Biotech USA Inc., TX, USA) and hepcidin<sup>-ve</sup> groups. Viable cells were fluorescently detected with Calcein-AM (Shanghai Yeasen Biotechnology Co., Ltd.). Calcein-AM was added to the cells and incubated at 37°C for 5 min, washed with 20 mM HEPES buffer containing 1 mg/ml bovine serum albumin (Shanghai Yeasen Biotechnology Co., Ltd.) and resuspended with Hank's balanced salt solution buffer (Shanghai Yeasen Biotechnology Co., Ltd.). Fluorescence (X) was measured with a microplate reader. The iron chelator 2,2-bipyridyl (100 mM; Shanghai Yeasen Biotechnology Co., Ltd.) was added to the cell suspension and incubated at 37°C for 30 min to measure the resulting fluorescence (Y). The iron level in the cuvette was the difference between the two fluorescence values (Y-X).

**Detection of cell proliferation by the MTT assay.** si-hepcidin-transfected LNCap, PC3 and DU145 cells were digested and counted, with the concentrations adjusted to 1.5x10<sup>5</sup>/ml. Next, the cells were divided into exogenous hepcidin-treated (hepcidin<sup>+ve</sup>) and hepcidin-knockdown (hepcidin<sup>-ve</sup>) groups, inoculated into 6-well plates, incubated for 24 h, digested, centrifuged and inoculated into 96-well plates following adjustment of the final concentrations to 1x10<sup>5</sup> cells/ml (100 μl each well). MTT assay was performed on days 1, 2, 3 and 4 respectively. Briefly, 5 mg/ml MTT solution was added to the plates (20 μl/well) for 4 h. The supernatant was subsequently discarded and DMSO (150 μl/well) was added to dissolve the purple formazan. Absorbance (A) value was measured at 460 nm with a microplate reader. The survival rate was calculated as follows:

Survival rate (%) = A<sub>460</sub> of experimental group / A<sub>460</sub> of control group x 100.

**Detection of in vitro cell migration by the scratch method.** si-hepcidin-transfected LNCap, PC3 and DU145 cells were divided into the hepcidin<sup>+ve</sup> and hepcidin<sup>-ve</sup> groups. Following incubation for 24 h, the cells were digested with trypsin, pipetted and dispersed into single-cell suspensions, with the densities adjusted to 4x10<sup>5</sup> cells/ml. The cells were then seeded into 6-well plates (2 ml each well). When cells reached 80-90% confluence, a straight line was scratched uniformly

on the 6-well plate with a 10- $\mu$ l pipette tip. Afterwards, the detached cells were washed off with PBS and cultured in a medium (Minimum Essential Media) containing 1% FBS. Images of the fixed scratch sites were captured using a light microscope (magnification, x200) at 0 and 24 h to record the cell confluence. The experiment was repeated three times.

**Detection of cell apoptosis.** si-hepcidin-transfected and LNCap, PC3 and DU145 cells were digested, counted, seeded into 6-well plates ( $1.5 \times 10^5$ /ml) and divided into the hepcidin<sup>+/ve</sup> and hepcidin<sup>-ve</sup> groups. Following culture for 48 h at 37°C, the culture medium was discarded, and the cells were washed with and resuspended in PBS following trypsin digestion. According to the protocol of the Annexin V-fluorescein isothiocyanate/propidium iodide (FITC/PI) apoptosis detection kit (Shanghai Qianchen Biotechnology Co., Ltd., Shanghai, China), 500  $\mu$ l binding buffer was added to each tube to suspend the cells. Subsequently, the cells were mixed with 5  $\mu$ l Annexin V-FITC and 5  $\mu$ l PI and incubated at room temperature in the dark for 15 min prior to detection of apoptosis with the BD FACSAria II flow cytometer (BD Biosciences, Franklin Lakes, NJ, USA).

**Statistical analysis.** All experiments were performed in triplicate. All data were analyzed by SPSS 22.0 (IBM Corp., Armonk, NY, USA) and expressed as the mean  $\pm$  standard deviation. Two groups were compared using Student's t-test, and multiple comparisons were conducted by one-way analysis of variance (ANOVA). In the case of homogeneity of variance, overall comparisons were performed with using ANOVA and multiple comparisons were conducted using the Bonferroni method.  $P < 0.05$  was considered to indicate a statistically significant difference.

## Results

**Hepcidin gene-silenced prostate cancer cell lines are constructed.** Western blot analysis revealed that the prostate cancer cell lines transfected with si-hepcidin had weak protein bands, whereas the untransfected cells had strong bands (Fig. 1A). Therefore, hepcidin gene-silenced prostate cancer cell lines were successfully established.

**Hepcidin expression in prostate cancer cells exceeds that in normal prostate cells.** Hepcidin expression in prostate cancer LNCap, PC3 and DU145 cells and that in the normal prostate cells RWPE-1 after 48 h of culture as detected by western blot analysis. The relative hepcidin protein expression in LNCap, PC3, DU145 and RWPE-1 cells (relative to  $\beta$ -actin) was  $1.51 \pm 0.12$ ,  $1.33 \pm 0.11$ ,  $1.46 \pm 0.15$  and  $0.39 \pm 0.03$ , respectively (Fig. 1B), indicating that the expression in prostate cancer cells was significantly higher than that in normal prostate cells ( $P < 0.05$ ). However, the expression levels of hepcidin in different prostate cancer cell lines were not significantly different ( $P > 0.05$ ).

**Addition of exogenous hepcidin following gene silencing increases the intracellular iron levels.** The fluorescence assay revealed that the relative fluorescence intensity in si-hepcidin-transfected LNCap, PC3 and DU145 cells was

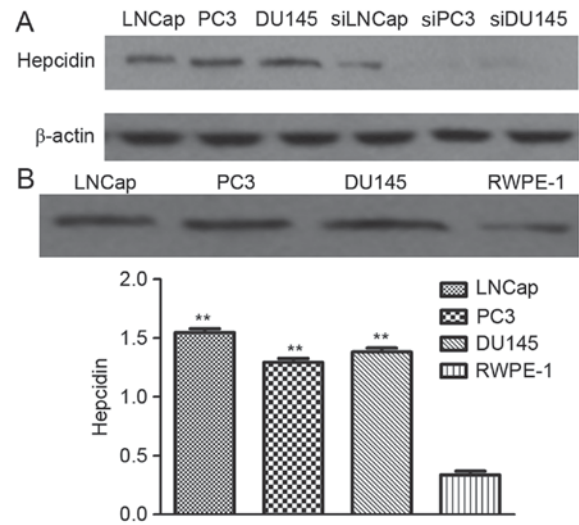


Figure 1. Construction of hepcidin-silenced prostate cancer cells and detection of hepcidin expression. (A) Western blotting results for untransfected and transfected prostate cancer cells. Transfected prostate cancer cells had weak protein bands but untransfected ones had strong bands. (B) Hepcidin protein expression detected by western blotting. Hepcidin expression in prostate cancer cells was significantly higher than that in normal prostate cells, but different prostate cancer cells had similar expression levels. \*\* $P < 0.01$  compared with the normal prostate cells. si, cell lines transfected with small interfering RNAs targeting hepcidin.

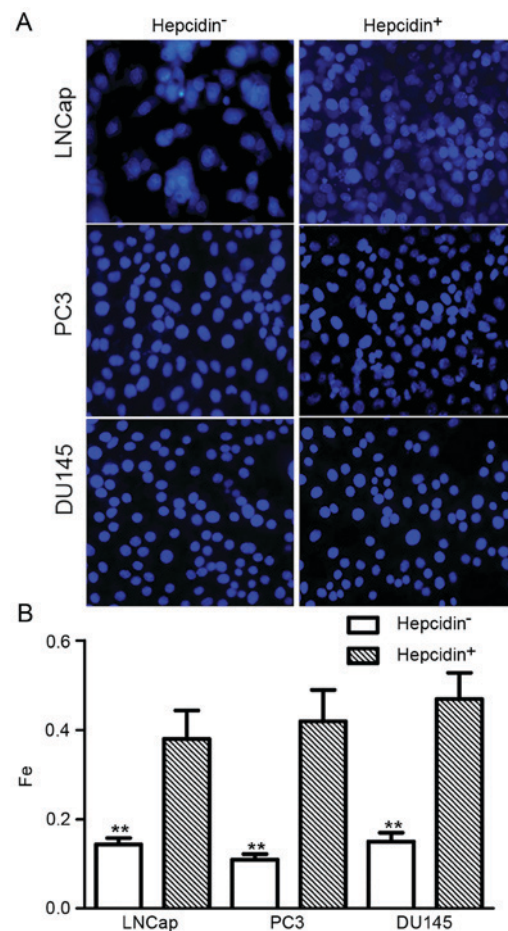


Figure 2. Relative intracellular iron levels as determined by fluorescence intensity. Fluorescence intensity in the hepcidin<sup>+/ve</sup> groups was significantly increased. (A) Fluorescence assay images and (B) data analysis results. \*\* $P < 0.01$  compared with the hepcidin<sup>+/ve</sup> groups. Hepcidin<sup>+/ve</sup>, cells treated with exogenous hepcidin.

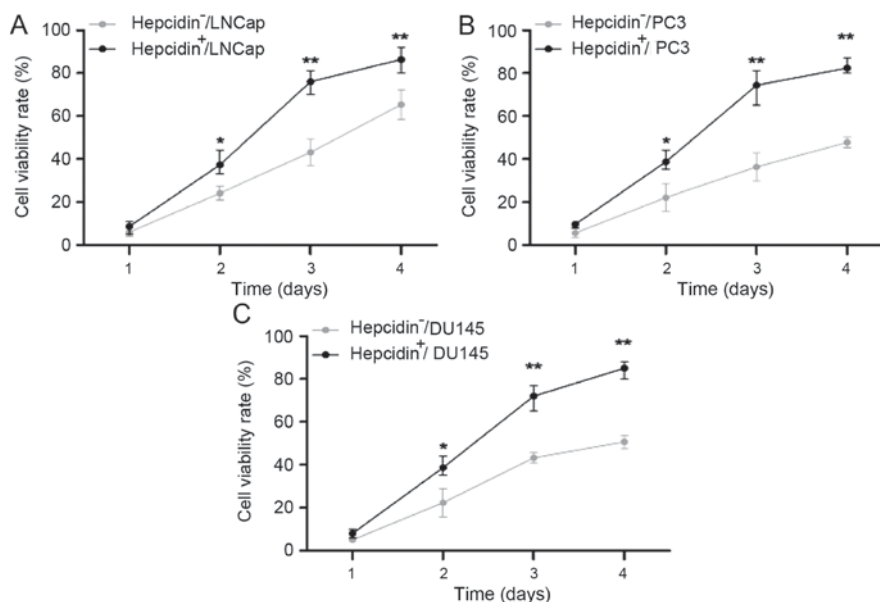


Figure 3. Viability rates of (A) LNCap, (B) PC3 and (C) DU145 cells detected using an MTT assay. The proliferation capacities of the hepcidin<sup>+ve</sup> groups, which were similar to those of the hepcidin<sup>-ve</sup> groups on the first day, became significantly higher with extended time. \* $P < 0.05$ . \*\* $P < 0.01$  compared with the hepcidin<sup>+ve</sup> groups. Hepcidin<sup>+ve</sup>, cells treated with exogenous hepcidin; hepcidin<sup>-ve</sup>, hepcidin-silenced cells.

0.12±0.05, 0.13±0.06 and 0.11±0.04, respectively. Following the addition of exogenous hepcidin (500 nM), these values increased 0.38±0.08, 0.42±0.07 and 0.47±0.08, respectively (Fig. 2). This result indicated that the relative intracellular iron level significantly increased following the addition of hepcidin, indicating that hepcidin promoted intracellular iron transfer.

*Addition of exogenous hepcidin following gene silencing accelerates cell proliferation.* As detected by the MTT assay, the proliferation capacities of the si-hepcidin-transfected LNCap, PC3 and DU145 cells, which were similar to those of the hepcidin<sup>-ve</sup> groups on day 1 ( $P > 0.05$ ), significantly increased over time ( $P < 0.05$ ; Fig. 3). Thus, hepcidin facilitated the proliferation of prostate cancer cells.

*Addition of exogenous hepcidin following gene silencing accelerates cell migration.* The migration capacities of si-hepcidin-transfected LNCap, PC3 and DU145 cells prior to and 24 h after culture with exogenous hepcidin (500 nM) were determined by the scratch method. In the hepcidin<sup>+ve</sup> groups, the number of cells at the scratch sites was higher than that of the hepcidin<sup>-ve</sup> groups, indicating higher migration rates. In the meantime, the distance between the boundaries of the scratch sites was markedly reduced (Fig. 4). Accordingly, the presence of hepcidin was conducive to the increased migration of prostate cancer cells.

*Addition of exogenous hepcidin following gene silencing decelerates cell apoptosis.* Flow cytometry revealed that after 48 h of culture with exogenous hepcidin, the average apoptotic rates of si-hepcidin-treated LNCap, PC3 and DU145 cells in the hepcidin<sup>+ve</sup> groups were 2.1±0.3, 1.8±0.3 and 1.3±0.2%, respectively, while those of the hepcidin<sup>-ve</sup> groups were 10.1±0.8, 10.9±0.4 and 9.2±0.4% (Fig. 5). Markedly, the apoptotic rates of the hepcidin<sup>+ve</sup> groups were significantly

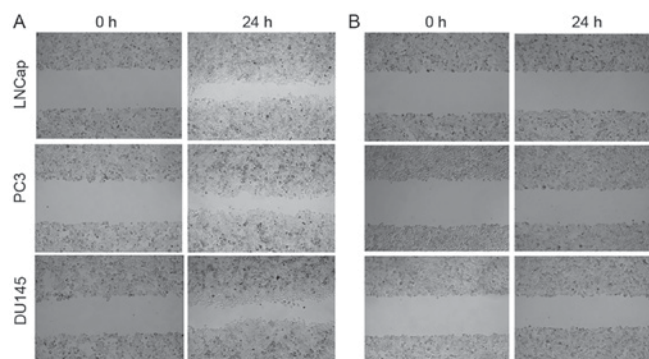


Figure 4. Cell migration. In the hepcidin<sup>+ve</sup> groups, the numbers of cells at the scratch sites increased more than those of the hepcidin<sup>-ve</sup> groups. The gap between the cells was markedly reduced in (A) hepcidin<sup>+ve</sup> cells after incubation for 24 h compared with (B) hepcidin<sup>-ve</sup> cells. Hepcidin<sup>+ve</sup>, cells treated with exogenous hepcidin; hepcidin<sup>-ve</sup>, hepcidin-silenced cells.

lower than those of hepcidin<sup>-ve</sup> groups, revealing that hepcidin inhibited the apoptosis of prostate cancer cells.

*Addition of exogenous hepcidin following gene silencing decreased ferroportin protein expression.* The ferroportin expression in the hepcidin<sup>-ve</sup> cells prior to and following addition of exogenous hepcidin were detected by western blot analysis (Fig. 6). The expression of ferroportin in the hepcidin<sup>-ve</sup> groups was significantly higher than that in the hepcidin<sup>+ve</sup> groups ( $P < 0.05$ ), indicating that hepcidin regulated the decrease of ferroportin expression.

## Discussion

As a regulator of iron metabolism, hepcidin predominantly affects the growth of tumor cells following *in vivo* alterations (18). The onset of many types of tumors is accompanied by an increase in iron consumption; therefore reducing

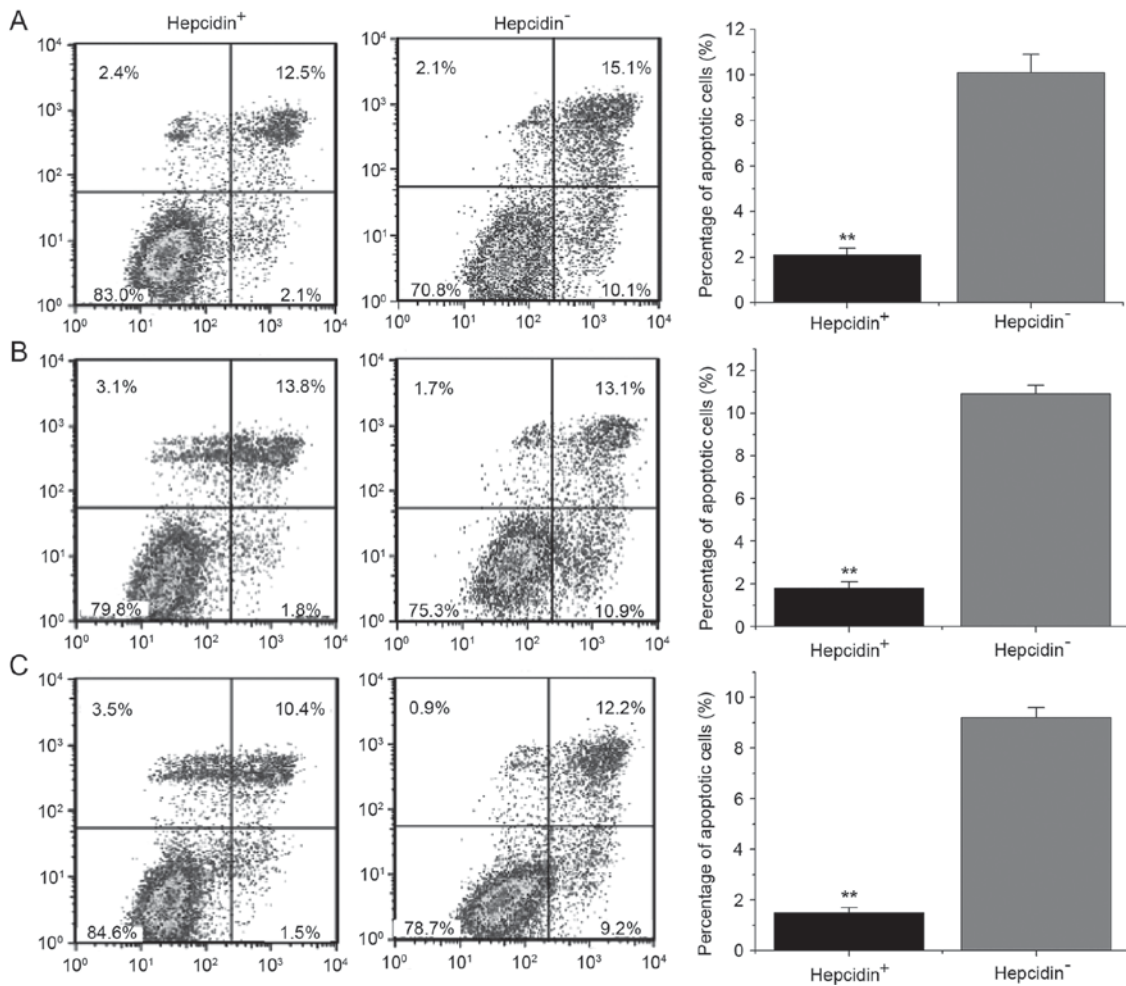


Figure 5. Cell apoptosis detected by flow cytometry. The apoptotic rates of the hepcidin<sup>+/ve</sup> groups were significantly lower than those of the hepcidin<sup>-/ve</sup> groups. (A) Si-hepcidin LNCap; (B) Si-hepcidin PC3 and (C) Si-hepcidin DU145 cells. \*\*P<0.01 compared with the hepcidin<sup>+/ve</sup> groups. Hepcidin<sup>+/ve</sup>, cells treated with exogenous hepcidin; hepcidin<sup>-/ve</sup>, hepcidin-silenced cells.

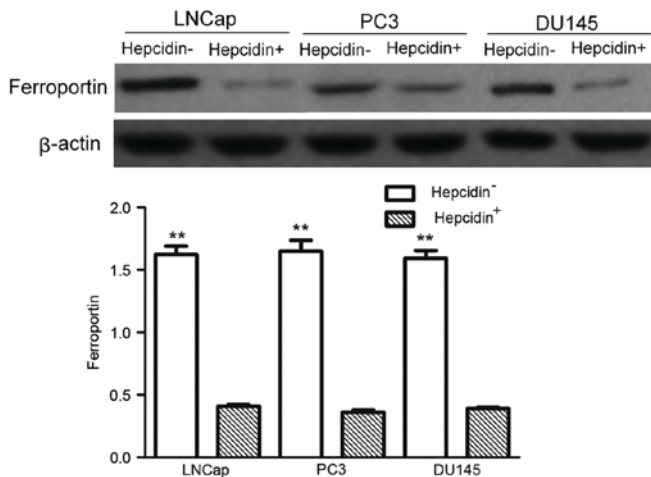


Figure 6. Ferroportin protein expression detected by western blotting. The expression of ferroportin in the hepcidin<sup>-/ve</sup> groups were significantly higher than those of the hepcidin<sup>+/ve</sup> groups. \*\*P<0.01 compared with the hepcidin<sup>+/ve</sup> groups. Hepcidin<sup>+/ve</sup>, cells treated with exogenous hepcidin; hepcidin<sup>-/ve</sup>, hepcidin-silenced cells.

mRNA expression had high levels of iron in tissues, verifying that hepcidin was a signaling molecule involved in iron transport. In mice deficient in the ceruloplasmin gene, hepcidin expression was positively associated with serum transferrin saturation, but negatively associated with iron levels in liver tissues (20). Upon high iron levels, more hepcidin is secreted by the liver, which then enters the bloodstream and decreases iron absorption in the duodenum and free iron release in monocytes/macrophages (21). Therefore, hepcidin serves a central role in iron metabolism regulation, storage and cycling, a process for which ferroportin is the main receptor (22,23).

The present study assessed the roles of hepcidin and iron metabolism in the onset of prostate cancer. Hepcidin was highly expressed in prostate cancer cells compared with normal prostate epithelial cells. LNCap, PC3 and DU145 cells in which hepcidin gene expression was silenced were established. Provided that the hepcidin<sup>+/ve</sup> groups had significantly elevated iron levels, hepcidin promoted intracellular iron transfer by regulating ferroportin. After 48 h of culture with hepcidin, the proliferative capacity of the hepcidin<sup>+/ve</sup> group became significantly different from that of the hepcidin<sup>-/ve</sup> group, with exogenous hepcidin facilitating the proliferation and growth of tumor cells. Malignant tumors are typified by

iron metabolism is often an aim of antitumor studies. Nicolas *et al* (19) reported that mice deficient in hepcidin

invasion and metastasis. In the wound-healing assay, since significantly more cells in the hepcidin<sup>+</sup> groups migrated into the scratch sites than the hepcidin<sup>-</sup> groups did, the migration of prostate cancer cells was boosted by the addition of exogenous hepcidin. Additionally, the hepcidin<sup>+</sup> groups had significantly lower apoptotic rates than those of the hepcidin<sup>-</sup> groups, indicating that hepcidin facilitated resistance to apoptosis in prostate cancer cells, and interfering with hepcidin expression exerted the opposite effect. Significantly lower levels ferroportin was expressed in the hepcidin<sup>+</sup> groups than in hepcidin<sup>-</sup> groups, with significantly higher intracellular iron levels.

In summary, exogenous hepcidin treatment led to a decrease in ferroportin expression, increasing the intracellular iron level and enhancing the proliferation and migration of prostate cancer cells while decreasing levels of apoptosis, thereby affecting cancer progression. Therefore, the use of hepcidin as a novel molecular therapy target may aid the advance of prostate cancer treatment.

### Acknowledgements

Not applicable.

### Funding

The present study was financially supported by the Applied and Basic Research Foundation of Yunnan Provincial Science and Technology Department (grant no. 2014FB068).

### Availability of data and materials

The datasets generated and analyzed in the present study are included in this published article.

### Authors' contributions

BZ, RL and QW designed this study and prepared this manuscript; GC, ZL, ZZ, JL, GZ, CB, CH, LY, YL performed the experiments and analyzed experimental data.

### Ethics approval and consent to participate

Not applicable.

### Consent for publication

The study participants provided consent for the data to be published.

### Competing interests

The authors declare that they have no competing interests.

### References

- Ye L, Kynaston HG and Jiang WG: Bone metastasis in prostate cancer: Molecular and cellular mechanisms (Review). *Int J Mol Med* 20: 103-111, 2007.
- Moyer VA; U.S. Preventive Services Task Force: Screening for prostate cancer: U.S. Preventive Services Task Force recommendation statement. *Ann Intern Med* 157: 120-134, 2012.
- Msaouel P, Pissimissis N, Halapas A and Koutsilieris M: Mechanisms of bone metastasis in prostate cancer: Clinical implications. *Best Pract Res Clin Endocrinol Metab* 22: 341-355, 2008.
- Torti SV and Torti FM: Iron and cancer: More ore to be mined. *Nat Rev Cancer* 13: 342-355, 2013.
- Johnson M, Autzen P, Robson C, Hoedenmaaker R and Hamdy F: Prognostic value of bone morphogenetic protein 6 expression in clinically organ confined prostate cancer. *Eur Urol* 35: 512, 1999.
- Abbaspour N, Hurrell R and Kelishadi R: Review on iron and its importance for human health. *J Res Med Sci* 19: 164-174, 2014.
- Chen D and Xu Y: Relation of iron and cervical cancer. *World J Cancer Res* 4: 1-3, 2014.
- Nemeth E and Ganz T: Regulation of iron metabolism by hepcidin. *Annu Rev Nutr* 26: 323-342, 2006.
- Legendre C and Garcion E: Iron metabolism: A double-edged sword in the resistance of glioblastoma to therapies. *Trends Endocrinol Metab* 26: 322-331, 2015.
- Nemeth E, Rivera S, Gabayan V, Keller C, Taudorf S, Pedersen BK and Ganz T: IL-6 mediates hypoferrremia of inflammation by inducing the synthesis of the iron regulatory hormone hepcidin. *J Clin Invest* 113: 1271-1276, 2004.
- Lane DJ, Huang ML and Richardson DR: Hepcidin, show some self-control! How the hormone of iron metabolism regulates its own expression. *Biochem J* 452: e3-e5, 2013.
- Anderson GJ and Frazer DM: Iron metabolism meets signal transduction. *Nat Genet* 38: 503-504, 2006.
- Autzen P, Robson CN, Bjartell A, Malcolm AJ, Johnson MI, Neal DE and Hamdy FC: Bone morphogenetic protein 6 in skeletal metastases from prostate cancer and other common human malignancies. *Br J Cancer* 78: 1219-1223, 1998.
- Malyszko J and Mysliwiec M: Hepcidin in anemia and inflammation in chronic kidney disease. *Kidney Blood Press Res* 30: 15-30, 2007.
- Ludwig H, Evstatiev R, Kornek G, Aapro M, Bauernhofer T, Buxhofer-Ausch V, Fridrik M, Geissler D, Geissler K, Gisslinger H, *et al*: Iron metabolism and iron supplementation in cancer patients. *Wien Klin Wochenschr* 127: 907-919, 2015.
- Citelli M, Bittencourt LL, Da Silva SV, Pierucci AP and Pedrosa C: Vitamin A modulates the expression of genes involved in iron bioavailability. *Biol Trace Elem Res* 149: 64-70, 2012.
- Tanno T, Rabel A, Alleyne M, Lee YT, Dahut WL, Gulley JL and Miller JL: Hepcidin, anaemia, and prostate cancer. *BJU Int* 107: 678-679, 2011.
- Bobinac D, Marić I, Zoricic S, Spanjol J, Dordevic G, Mustac E and Fuckar Z: Expression of bone morphogenetic proteins in human metastatic prostate and breast cancer. *Croat Med J* 46: 389-396, 2005.
- Nicolas G, Bennoun M, Devaux I, Beaumont C, Grandchamp B, Kahn A and Vaulont S: Lack of hepcidin gene expression and severe tissue iron overload in upstream stimulatory factor 2 (USF2) knockout mice. *Proc Natl Acad Sci USA* 98: 8780-8785, 2001.
- Wrighting DM and Andrews NC: Interleukin-6 induces hepcidin expression through STAT3. *Blood* 108: 3204-3209, 2006.
- Ganz T and Nemeth E: Hepcidin and disorders of iron metabolism. *Annu Rev Med* 62: 347-360, 2011.
- De Domenico I, Ward DM and Kaplan J: Hepcidin regulation: Ironing out the details. *J Clin Invest* 117: 1755-1758, 2007.
- Tesfay L, Clausen KA, Kim JW, Hegde P, Wang X, Miller LD, Deng Z, Blanchette N, Arvedson T, Miranti CK, *et al*: Hepcidin regulation in prostate and its disruption in prostate cancer. *Cancer Res* 75: 2254-2263, 2015.