



REVIEW

# Ketamine and rapid-acting antidepressants: a new era in the battle against depression and suicide [version 1; referees: 3 approved]

Ronald S. Duman

Department of Psychiatry, Laboratory of Molecular Psychiatry, Yale University School of Medicine, New Haven, CT 06508, USA

**v1** **First published:** 24 May 2018, 7(F1000 Faculty Rev):659 (doi: 10.12688/f1000research.14344.1)  
**Latest published:** 24 May 2018, 7(F1000 Faculty Rev):659 (doi: 10.12688/f1000research.14344.1)

**Abstract**

Therapeutic medications for the treatment of depression have serious limitations, particularly delayed onset and low rates of efficacy. However, the discovery that a single subanesthetic dose of ketamine, a glutamate NMDA receptor channel blocker, can produce a rapid (within hours) antidepressant response that is sustained (about 1 week), even in patients considered treatment-resistant, has invigorated the field. In addition to these remarkable actions, ketamine has proven effective for the treatment of suicidal ideation. Efforts are under way to develop ketamine-like drugs with fewer side effects as well as agents that act at other sites within the glutamate neurotransmitter system. This includes ketamine metabolites and stereoisomers, drugs that act as NMDA allosteric modulators or that block mGluR2/3 autoreceptors. In addition, targets that enhance glutamate neurotransmission or synaptic function (or both), which are essential for the rapid and sustained antidepressant actions of ketamine in rodent models, are being investigated; examples are the muscarinic cholinergic antagonist scopolamine and activators of mechanistic target of rapamycin complex 1 (mTORC1) signaling, which is required for the actions of ketamine. The discovery of ketamine and its unique mechanisms heralds a new era with tremendous promise for the development of novel, rapid, and efficacious antidepressant medications.

**Keywords**

Ketamine, mTOR, antidepressants, depression, suicide

**Open Peer Review**

**Referee Status:**

	Invited Referees		
	1	2	3
<b>version 1</b> published 24 May 2018			

F1000 Faculty Reviews are commissioned from members of the prestigious F1000 Faculty. In order to make these reviews as comprehensive and accessible as possible, peer review takes place before publication; the referees are listed below, but their reports are not formally published.

- 1 **Kenji Hashimoto**, Chiba University Center for Forensic Mental Health, Japan
- 2 **Dan V. Iosifescu**, Nathan Kline Institute and New York University School of Medicine, USA
- 3 **Sanjay J Mathew**, Baylor College of Medicine, USA  
Michael E. DeBakey VA Medical Center, USA

**Discuss this article**

Comments (0)

**Corresponding author:** Ronald S. Duman ([ronald.duman@yale.edu](mailto:ronald.duman@yale.edu))

**Author roles:** Duman RS: Formal Analysis

**Competing interests:** The author has received consulting fees from Taisho, Johnson & Johnson, and Naurex and grant support from Taisho, Johnson & Johnson, Naurex, Allergan, Navitor, Lundbeck, Relmada, and Eli Lilly and Company.

**How to cite this article:** Duman RS. **Ketamine and rapid-acting antidepressants: a new era in the battle against depression and suicide [version 1; referees: 3 approved]** *F1000Research* 2018, 7(F1000 Faculty Rev):659 (doi: [10.12688/f1000research.14344.1](https://doi.org/10.12688/f1000research.14344.1))

**Copyright:** © 2018 Duman RS. This is an open access article distributed under the terms of the [Creative Commons Attribution Licence](#), which permits unrestricted use, distribution, and reproduction in any medium, provided the original work is properly cited. Data associated with the article are available under the terms of the [Creative Commons Zero "No rights reserved" data waiver](#) (CC0 1.0 Public domain dedication).

**Grant information:** This research was supported by National Institute of Mental Health grants MH045481 and MH093897 and the State of Connecticut. The funders had no role in decision to publish, or preparation of the manuscript.

**First published:** 24 May 2018, 7(F1000 Faculty Rev):659 (doi: [10.12688/f1000research.14344.1](https://doi.org/10.12688/f1000research.14344.1))

## Introduction

Major depressive disorder affects nearly 20% of the population at some point during the life span and is estimated to be the number one cause of disability by 2020<sup>1-4</sup>. The deleterious effects of depression are compounded by the lack of fast and efficacious treatment regimens, as currently available medications are effective in only about two-thirds of patients and there is a significant therapeutic time lag of weeks to months<sup>5</sup>. The efficacy and time lag limitations of current medications are particularly problematic for a patient population at elevated risk for suicide, which has increased significantly over the past 4 years<sup>6,7</sup>.

These deficiencies highlight a major unmet need for the treatment of depression and underscore the impact of new rapid-acting antidepressant agents, notably the NMDA receptor antagonist ketamine. A single subanesthetic dose of ketamine produces a therapeutic response within a few hours that lasts for about 7 days<sup>8,9</sup>. Equally surprising is that ketamine is effective in severely depressed patients who are considered treatment-resistant (that is, patients who have failed to respond to two or more typical antidepressants). In addition, ketamine has proven effective for the rapid reduction of suicide ideation<sup>10</sup>. The discovery of the rapid, efficacious, and sustained effects of ketamine is arguably the greatest breakthrough in the field of depression in over 60 years since the development of the monoaminergic antidepressants in the 1950s.

Here, we will provide a brief history and overview of the discovery of ketamine and how it impacts the synaptic pathophysiology of depression and current evidence on the molecular and cellular mechanisms underlying the actions of ketamine. Then we will discuss how the ketamine discovery has stimulated the development of novel agents with fewer side effects, including drugs that act at the glutamate-NMDA receptor but also other agents that impact synapse number and function via other pathways.

## Discovery of ketamine and NMDA receptor antagonists as rapid-acting agents

Most drug development efforts in the depression field have focused on the serotonin and norepinephrine neurotransmitter systems since the development of the monoamine reuptake blocker tricyclic antidepressants. However, studies of the glutamatergic neurotransmitter system and the mechanisms underlying synaptic plasticity stimulated drug development efforts in these areas. Early studies demonstrated that typical antidepressants altered the affinity of the NMDA receptor glycine site, suggesting the possibility that decreased NMDA receptor function contributes to an antidepressant response. This hypothesis was directly tested first by Krystal, Berman, Charney, and colleagues at Yale when they investigated a single subanesthetic dose (0.5 mg/kg, intravenous [IV] infusion over the course of 40 minutes) of ketamine and found that patients started reporting improvement of depressive symptoms within a matter of a few hours<sup>8</sup>. These improvements occurred after the initial psychotic and dissociative effects of ketamine, which occur in the first 60 minutes. The rapid and efficacious antidepressant actions of ketamine were confirmed in a larger double-blind, placebo-controlled study by Zarate, Charney,

and colleagues at the National Institute of Mental Health<sup>9</sup> and subsequently by many other studies from a number of clinical research groups, largely erasing any doubts of the incredible antidepressant actions of ketamine<sup>11-13</sup>.

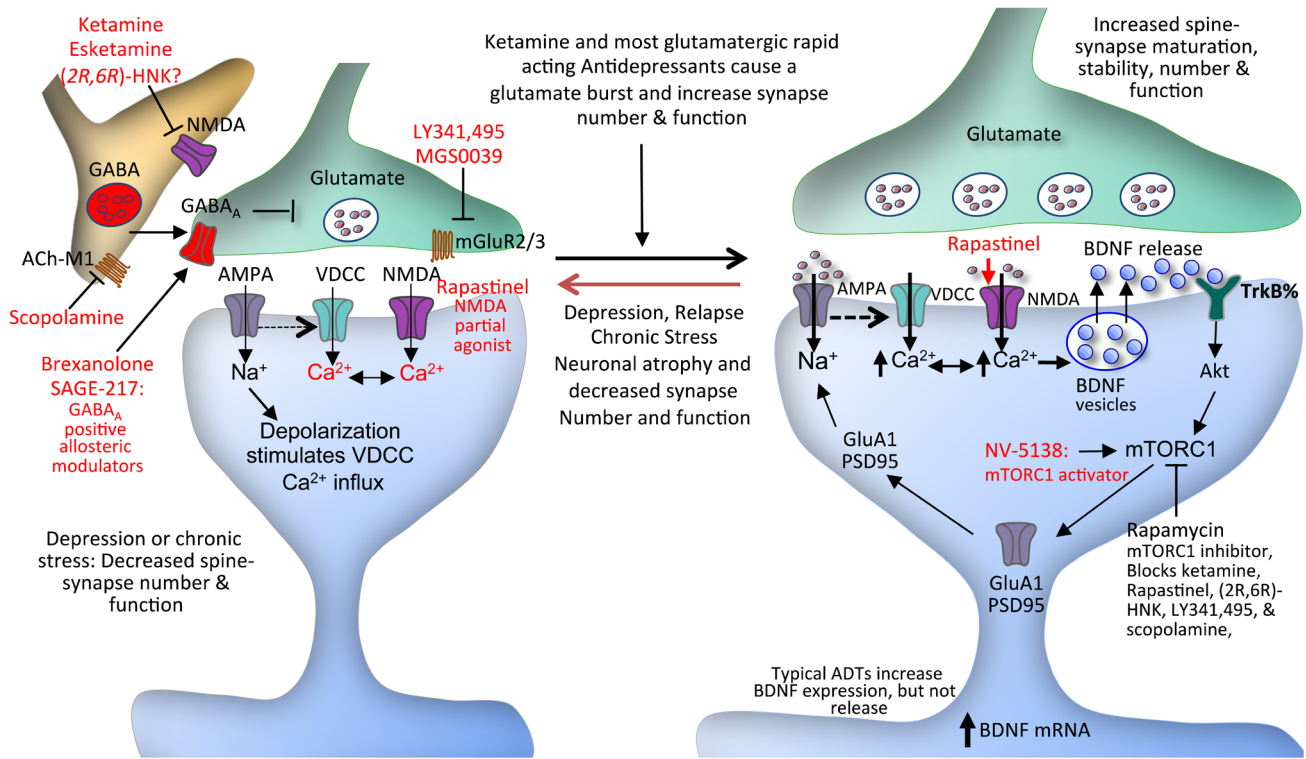
## Ketamine reverses the synaptic abnormalities caused by stress

Glutamate and NMDA receptors play an important role in cellular models of learning and memory, notably long-term potentiation (LTP), characterized by sustained synaptic strengthening in response to prior high-frequency stimulation. Actions of ketamine at NMDA receptors could influence NMDA function and synaptic plasticity in brain regions implicated in depression<sup>14</sup>. The possibility that synaptic changes are relevant to depression is supported by evidence that chronic stress, often used in rodent models of depression, causes significant loss of synapses and even retraction of apical dendrites in the prefrontal cortex (PFC) and hippocampus<sup>15,16</sup> (Figure 1). The relevance of stress-induced synaptic deficits in rodent models is in turn supported by evidence from brain imaging studies demonstrating decreased volume of PFC and hippocampus in depressed patients and post-mortem studies showing decreased synapse number<sup>17</sup>. In contrast to the effects of chronic stress, we found that a single dose of ketamine rapidly increases the number and function of spine synapses in layer V pyramidal neurons in the medial PFC (mPFC) and rapidly reverses the synaptic deficits of these neurons caused by 3 weeks of chronic stress exposure<sup>18,19</sup> (Figure 1). Increased levels of synaptic proteins, including levels of glutamate AMPA receptor GluA1, were observed after 2 hours, consistent with the onset of the therapeutic actions of ketamine. These studies demonstrate that ketamine rapidly increases synaptic function in the mPFC and that this reverses the synaptic pathophysiology of depression<sup>20</sup>.

In addition to the effects of ketamine in the mPFC, there is a recent high-impact report demonstrating the effects of ketamine in the lateral habenula, a region that inhibits the major reward centers in the brain<sup>21</sup>. This study shows that depressive-like behavior in rodent models (rat congenital learned helplessness [LH] and mouse chronic restraint stress) is characterized by increased burst firing of neurons in the lateral habenula, which causes inhibition of the activity of the major reward and emotion pathways and the ventral tegmental dopamine system as well as the serotonin dorsal raphe neurons. This burst firing is driven by NMDA receptor activity as well as low-voltage-sensitive T-type calcium channels; ketamine, after either systemic or local intracerebral administration, is sufficient to block the burst firing and depressive behavior in the LH rats. It has been postulated that blockade of the anti-reward effects exerted by the lateral habenula could underlie the rapid antidepressant actions of ketamine and that the synaptic effects of ketamine in the mPFC could be more related to the sustained actions of ketamine, although further studies are needed to test this hypothesis.

## Mechanisms underlying the synaptic actions of ketamine: disinhibition hypothesis

How might ketamine, an NMDA receptor channel blocker, cause a rapid increase in the number and function of spine synapses? There are different theories, but the one that has received



**Figure 1. Schematic model for the initial cellular target sites of rapid-acting antidepressants and subsequent synaptic changes.** Stress and depression cause neuronal atrophy and decreased synapse number in the medial prefrontal cortex (PFC) and hippocampus that is associated with the depressive symptoms and behaviors in rodent models. Conversely, fast-acting antidepressants like ketamine rapidly increase synapse number and function and reverse the synaptic deficits caused by chronic stress. The synaptic actions of ketamine, as well as several other agents (that is, esketamine, [2R,6R]-hydroxynorketamine, mGluR2/3 antagonists LY341,495 and MGS0039, and scopolamine acting at acetylcholine muscarinic 1 receptors), are activity-dependent and are thought to result from a burst of glutamate via blockade of receptors on tonic firing GABA interneurons, resulting in disinhibition of glutamate transmission. This burst of glutamate causes activity-dependent release of brain-derived neurotrophic factor (BDNF), stimulation of TrkB-Akt and mechanistic target of rapamycin complex 1 (mTORC1) signaling, and rapid increases in synaptic protein synthesis that underlie new synapse formation. Negative allosteric modulators, including CP-101,606, CERC-301, and Ro 25-6981 agents like rapastinel, may increase synapse formation by enhancing NMDA function and thereby increasing BDNF release and downstream mTORC1 signaling. A role for mTORC1 is further supported by evidence that an agent that increases mTORC1 activity also produces synaptic and rapid antidepressant responses. In addition to these sites, there is evidence that the GABA<sub>A</sub>-positive allosteric modulating agents brexanolone and SAGE-217 also produce rapid antidepressant responses. The intersection of these agents with the mechanisms underlying the rapid response to glutamatergic agents remains to be identified.

the most attention is that ketamine actually increases glutamate transmission and causes an LTP-like enhancement of synapse formation in the mPFC<sup>14</sup>. This idea was first formulated when it was discovered that ketamine rapidly (30 minutes after systemic administration) increases extracellular glutamate in the mPFC of rodents<sup>22</sup>; this effect was observed only at low subanesthetic doses of ketamine, whereas high anesthetic doses had no effect. Elevation of extracellular glutamate led to the hypothesis that low doses of ketamine selectively block NMDA receptors on GABA interneurons that inhibit glutamate transmission (Figure 1). This selectivity is based on the fact that GABA interneurons are tonic firing, which results in removal of the Mg<sup>2+</sup> block of the NMDA receptor channel, allowing ketamine to enter, bind, and block the channel. Direct evidence for the disinhibition hypothesis has been reported recently in slice studies of hippocampus, which show that low concentrations of ketamine decrease inhibitory input onto pyramidal neurons and thereby lead to an increase in the

synaptic drive of excitatory pyramidal neurons in the hippocampus<sup>23</sup>. There is also an opposing “direct” hypothesis that the synaptic actions of ketamine are mediated by blockade of NMDA receptors on excitatory neurons, which leads to homeostatic control of synaptic activity<sup>24</sup>. This homeostatic direct hypothesis is difficult to rationalize in the mPFC where there is a glutamate burst but could occur in other brain regions where there is no increase in glutamate.

Studies of the cellular signaling mechanisms underlying the synaptic actions of ketamine demonstrate a requirement for brain-derived neurotrophic factor (BDNF) and activation of pathways that increase the synthesis of synaptic proteins (Figure 1). The antidepressant actions of ketamine are blocked in conditional BDNF-knockout mice<sup>24</sup> and in mice with a knockin of the BDNF Val66Met allele, which blocks the processing- and activity-dependent release of BDNF<sup>25</sup>. Further evidence that

activity-dependent release of BDNF is required comes from studies demonstrating that infusion of a function-blocking antibody into the mPFC blocks the antidepressant actions of ketamine<sup>26</sup>. Increased synthesis of synaptic proteins occurs via regulation of the mechanistic target of rapamycin complex 1 (mTORC1) as well as eukaryotic elongation factor 2 kinase (eEF2K). We have found that ketamine rapidly increases the phosphorylation of mTOR and downstream signaling proteins that stimulate synaptic protein synthesis and that the behavioral actions of ketamine are blocked by infusion of rapamycin, a selective inhibitor of mTORC1<sup>18</sup> (Figure 1). Further evidence for mTORC1 is provided by recent studies demonstrating that direct stimulation of mTORC1 also produces rapid synaptic and antidepressant behavioral responses<sup>27</sup>. Ketamine stimulation of mTORC1 signaling has been replicated in multiple laboratories<sup>18,19,28–42</sup>, although there is a preliminary report of non-significant effects, raising a concern about the suitability of this target for drug screening<sup>43</sup>. An alternative hypothesis is that ketamine blockade of NMDA receptors at rest results in deactivation of eEF2K and de-suppression of translation, thereby increasing BDNF expression in pyramidal neurons<sup>24</sup>. There has also been evidence that ketamine influences the opioid system and inflammation processes, effects that could contribute to the actions of ketamine<sup>44,45</sup>.

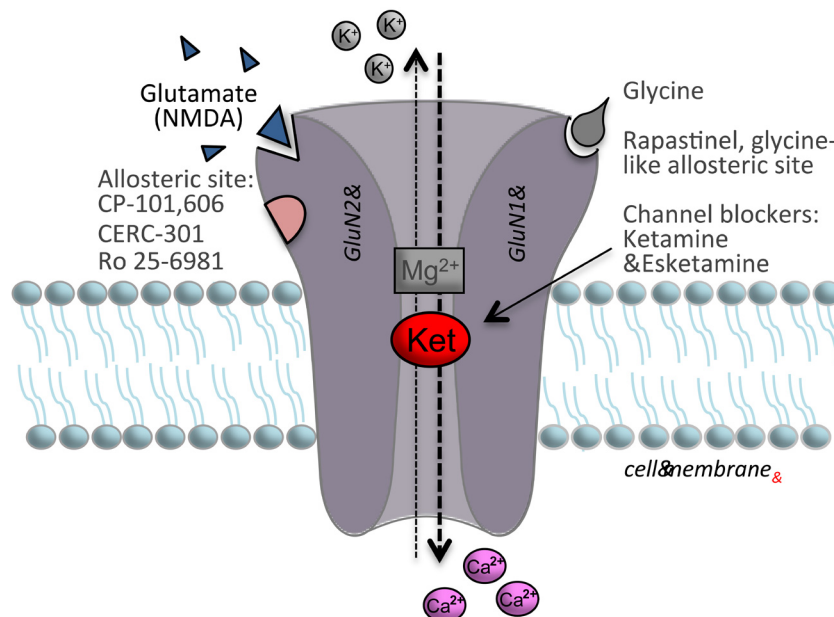
### Development of novel glutamate/NMDA receptor agents for depression

The widespread use of ketamine for the treatment of depression is limited by its psychotomimetic and dissociative side effects

as well as abuse potential. Nevertheless, for treatment-resistant patients, ketamine may be the only choice and is becoming more widely available. Another limitation is that ketamine is administered primarily by an IV route in a clinic or hospital setting. To address this issue, Johnson & Johnson is developing a nasal application of the (S)-ketamine stereoisomer (esketamine), which has received breakthrough therapy classification from the US Food and Drug Administration (FDA). Esketamine acts similarly to ketamine and has higher affinity as an NMDA channel blocker than the (R)-isomer (Figure 2). Early clinical trials have been promising, and although esketamine has side effects similar to those of ketamine, it could be approved as a nasal application as early as the beginning of 2019. Surprisingly, clinical trials with other non-selective NMDA receptor antagonists, including memantine and lanicemine, have been largely negative<sup>46–48</sup>. The reason for the lack of efficacy is not clear but could be related to the dose used or the efficacy (or both) of the channel-blocking activity of these agents.

### Stereoisomers and metabolites of ketamine

Efforts have also continued to develop and identify agents with the rapid and efficacious actions of ketamine but with fewer or no side effects. There is evidence from rodent studies that the (R)-stereoisomer of ketamine also produces rapid antidepressant effects in rodent models but without the ketamine-like side effects on sensory motor gating or conditioned place preference<sup>49</sup>. The reduced side effects may be related to the decreased affinity of the (R)-isomer for the NMDA receptor. In addition, (S)- but



**Figure 2. Model of the NMDA receptor complex and target sites of rapid-acting antidepressants.** The NMDA receptor is a complex of four subunits comprising four subunits that form a pore that is permeable to  $\text{Ca}^{2+}$ . At resting state, the pore is blocked by  $\text{Mg}^{2+}$ , but, upon depolarization,  $\text{Mg}^{2+}$  is removed, allowing entry of  $\text{Ca}^{2+}$ . In the open state, the pore is also accessible by ketamine, which enters and blocks further  $\text{Ca}^{2+}$  influx. The (S)-enantiomer esketamine binds to the same site to block the channel. There are several known sites for regulation of the NMDA receptor in addition to the ketamine and glutamate/NMDA binding sites. Glycine binds to the GluN1 subunit and enhances NMDA receptor function; AV-101 is an antagonist of the glycine B co-agonist site. Rapastinel has glycine-like enhancing properties, although it binds to an allosteric site on the complex. There are several GluN2B-selective allosteric modulators that have potential as rapid-acting agents, including CP-101,606, CERC-301, and Ro 25-6981. It is currently unknown what the initial target is for the metabolite (2R,6R)-hydroxynorketamine.



not (R)-ketamine is reported to stimulate mTORC1 signaling<sup>42</sup>. There is also evidence that the ketamine metabolite (2R,6R)-hydroxynorketamine—(2R,6R)-HNK—produces rapid and sustained antidepressant actions in several rodent models, again without influencing sensory motor gating or conditioned place preference<sup>50</sup>. This study found that (2R,6R)-HNK increased AMPA-GluA1 receptor expression and activity and increased levels of BDNF and phosphorylation of eEF2K; we have also found that the behavioral actions of (2R,6R)-HNK are blocked in BDNF Val66Met mice or by infusion of a function-blocking antibody and by infusion of rapamycin into the mPFC<sup>51</sup>. However, others have reported that the antidepressant actions of (2R,6R)-HNK are less potent and stable compared with (R)-ketamine<sup>52</sup> or do not produce antidepressant actions in a rat LH model<sup>53</sup>. Zanos and colleagues<sup>50</sup> report that they could find no evidence that (2R,6R)-HNK blocks NMDA receptors, including binding to known sites on the receptor complex or NMDA activity in hippocampal slices, so the initial cellular trigger remains to be identified. Nevertheless, another study reported that a high concentration of (2R,6R)-HNK (50  $\mu$ M) produces partial blockade of synaptic NMDA receptors and downstream signaling compared with the same concentration of ketamine<sup>54</sup>.

#### Other glutamatergic agents: GluN2B and mGluR2/3 antagonists and rapastinel

There is also evidence from rodent studies and preliminary clinical trials that antagonists that are selective for the GluN2B subunit of the NMDA receptor have antidepressant efficacy (Figure 2). Clinical studies first reported that a single dose of the selective GluN2B antagonist CP101,606 produces antidepressant actions in depressed patients, although significant effects were not observed until 5 days later<sup>55</sup>. Recent clinical studies with another GluN2B-selective agent, CERC-301, have been mixed; early studies reported positive effects, and a more recent report was negative, although this could be because of the lower dose used for the latter study<sup>56</sup>. Rodent studies demonstrate that a single dose of the GluN2B antagonist Ro 25-6981 produces antidepressant actions in several different antidepressant models, including the forced swim test (FST), LH, and novelty suppressed feeding test (NSFT), as well as in the chronic unpredictable stress-anhedonia model<sup>18,57</sup>. Additional studies are needed to further test the efficacy and rapid actions of GluN2B-selective agents.

Another agent of interest is rapastinel, also referred to as GLYX-13, which was initially thought to act as an NMDA glycine site partial agonist (Figure 2). More recent studies indicate that rapastinel has activity that is similar to that of a glycine site partial agonist but acts via an allosteric site<sup>38</sup>. Preclinical studies demonstrate that a single dose of rapastinel results in antidepressant actions in several rodent models, including the FST, NSFT, LH, chronic mild stress/anhedonia, and social defeat stress<sup>27,59</sup>. In contrast to ketamine, rapastinel does not influence sensory motor gating or conditioned place preference. A single dose of rapastinel also increases synapse number and function in the mPFC and requires BDNF release and mTORC1 activation<sup>27,41</sup>. However, one study reports that the antidepressant actions of rapastinel in a social defeat model as well as its effects on BDNF-TrkB signaling are not as long-lasting as those of (R)-ketamine<sup>60</sup>.

A double-blind randomized clinical trial reported that a single dose of rapastinel produces antidepressant actions that persisted for about 7 days<sup>61</sup>. Rapastinel has received breakthrough classification and currently is in phase III clinical trials. Another agent that works via the glycine site is AV-101, a prodrug (L-4-chlorokynurenine) that is transported into the brain where it is converted to 7-chlorokynurenic acid, a potent antagonist of the glycine B coagonist site of the NMDA receptor<sup>62</sup>; AV-101 is in phase II clinical trials and has received fast-track status from the FDA.

Based on evidence that the actions of ketamine occur via a “glutamate burst” and the subsequent enhancement of synaptic function, other approaches to increase glutamate neurotransmission have been tested. Most notable are the metabotropic GluR2/3 antagonists, which increase glutamate activity by blocking presynaptic autoreceptors (Figure 1). Preclinical studies have reported that mGluR2/3 antagonists, notably LY341,495 and MGS0039, produce antidepressant effects in a number of rodent models, including the FST, NSFT, and a chronic unpredictable stress-anhedonia model, and also require mTORC1 signaling<sup>29,63,64</sup>. Clinical trials are needed to determine whether blockade of mGluR2/3 receptors produces a therapeutic response in patients and to determine the side effect profile of these agents.

#### Additional rapid-acting antidepressant approaches

Although drug development has focused on direct-acting glutamatergic approaches, there is evidence for other initial targets that produce rapid antidepressant responses, although some of these also indirectly influence glutamate transmission. The most notable of these is scopolamine, a non-selective acetylcholine muscarinic (AChM) receptor antagonist, which has shown promise in clinical trials. These studies have reported that a single low dose (4  $\mu$ g/kg IV) of scopolamine produces an antidepressant response at the first assessment time point, 3 days after dosing, and there is anecdotal evidence of improvement within 24 hours<sup>55,66</sup>. These rapid therapeutic actions led us to examine the cellular actions of scopolamine in rodent models. These studies showed that, like ketamine, scopolamine causes a rapid burst of glutamate in the mPFC and increases mTORC1 signaling and synapse formation and that the antidepressant actions of scopolamine require BDNF release and mTORC1<sup>67,68</sup> (Figure 1). We have also found that the antidepressant actions of scopolamine occur through blockade of AChM1 receptors on GABA interneurons, demonstrating that scopolamine acts via a disinhibition mechanism<sup>69</sup>. Despite these interesting findings, there has been less interest in developing AChM antagonists for the treatment of depression relative to ketamine and direct-acting glutamatergic agents.

Another indirect approach that influences glutamate transmission is via the regulation of GABA<sub>A</sub> receptors, particularly selective inverse agonists that would increase glutamate transmission. Rodent studies targeting the  $\alpha$ 5-subunit-containing GABA<sub>A</sub> receptor, which is enriched in the PFC and hippocampus, report that a single dose of the  $\alpha$ 5-selective inverse agonists L-655,708 or MRK-016 produce rapid antidepressant behavioral responses in a number of tests, including the FST and female urine sniffing test (FUST), and chronic restraint stress and chronic unpredictable

stress-anhedonia models<sup>70,71</sup>. The actions of these inverse agonists require AMPA receptor activity, indicating an increase in glutamate transmission as expected. These compounds lack the side effects of ketamine on sensory motor gating and conditioned place preference, and this is possibly due to the restricted expression of  $\alpha 5$ -subunit-containing GABA<sub>A</sub> receptors. Clinical studies are required to determine the therapeutic potential and to confirm the reduced side effect profile of these agents.

One other very different approach is based on evidence that ketamine and several other rapid-acting agents increase mTORC1 signaling in the mPFC. The biotech company Navitor has developed an agent, NV-5138, that stimulates mTORC1 signaling via binding to sestrin, an upstream regulatory pathway<sup>72</sup> (Figure 1). We have found that a single oral dose of NV-5138 increases mTORC1 signaling in the mPFC as expected and produces rapid antidepressant actions in the FST, NSFT, FUST, and chronic unpredictable stress-anhedonia models<sup>27</sup>. These behavioral actions of NV-5138 are long-lasting (up to 7 days). In addition, a single dose of NV-5138 increases synapse number and function and levels of synaptic proteins in the mPFC. Preliminary studies also demonstrate that the actions of NV-5138 require BDNF (unpublished). Based on these promising preclinical findings, efforts are under way to test NV-5138 in human subjects and depressed patients.

Another exciting finding is the recent report that the neuroactive steroid allopregnanolone (SAGE-547, now referred to as brexanolone) produces rapid therapeutic actions in women with post-partum depression (PPD) (Figure 1). Allopregnanolone is a positive allosteric modulator of synaptic and extrasynaptic GABA<sub>A</sub> receptors, particularly the  $\delta$ -subunit that regulates tonic firing of GABA interneurons. PPD is associated with the precipitous drop at birth of allopregnanolone and other progesterone-derived neurosteroids that are very high during pregnancy; since PPD occurs in a subpopulation of women, there are likely vulnerability factors that are also involved. Previous studies have reported that mice with a deletion of the  $\delta$ -subunit show depression-like behavior and abnormal maternal care during the post-partum period<sup>73</sup>. The clinical study reports that sustained infusion (IV) of brexanolone results in a therapeutic response within 24–48 hours in severely depressed PPD women<sup>74,75</sup>. Brexanolone has received breakthrough status for the treatment of PPD and currently is in phase III trials. In addition, Sage has developed an orally available synthetic analogue, SAGE-217, that has shown therapeutic efficacy in

both female and male patients with major depression; SAGE-217 has also received breakthrough therapy status and soon will be starting phase III trials.

### Future studies and drug development

The discovery of ketamine and related agents holds tremendous promise for the rapid, efficacious treatment of depression. We are experiencing an unprecedented time of antidepressant drug development in this area; at least five different agents (rapastinel, esketamine, AV-101, brexanolone, and SAGE-217) have been awarded breakthrough therapy or fast-track status from the FDA. However, there are several critical problems to overcome. First, ketamine is a drug of abuse and has serious side effects, so new agents with a reduced side effect profile are needed. Second, although ketamine produces a rapid antidepressant response, the effects last for about 1 week, at which time patients typically relapse. New agents that can be used on a daily, sustained basis are needed. Third, studies are needed to understand why new ketamine-induced synapses are lost after 1 week and whether there are approaches or agents (or both) that can sustain the synaptic as well as the therapeutic actions of ketamine. Fourth, additional research is needed to fully understand the cellular mechanisms underlying the actions of ketamine and other rapid-acting agents and to determine the critical pathophysiological abnormalities that cause depression. The future for novel rapid-acting antidepressants looks very bright, as the drugs currently being tested in phase II and III clinical trials may address some of these issues. With continued efforts, there is hope that there will soon be a number of novel, rapid, and efficacious choices for the treatment of depression and the possibility that these could target the underlying causes of illness.

### Competing interests



The author has received consulting fees from Taisho, Johnson & Johnson, and Naurex and grant support from Taisho, Johnson & Johnson, Naurex, Allergan, Navitor, Lundbeck, Relmada, and Eli Lilly and Company.

### Grant information

This research was supported by National Institute of Mental Health grants MH045481 and MH093897 and the State of Connecticut.

*The funders had no role in study design, data collection and analysis, decision to publish, or preparation of the manuscript.*

## References

- WHO: **WHO | Depression [Internet]**. Depression. 2017.
-  Kessler RC, Chiu WT, Demler O, *et al.*: **Prevalence, severity, and comorbidity of 12-month DSM-IV disorders in the National Comorbidity Survey Replication**. *Arch Gen Psychiatry*. 2005; **62**(6): 617–27.  
[PubMed Abstract](#) | [Publisher Full Text](#) | [Free Full Text](#) | **F1000 Recommendation**
- Kessler RC: **The costs of depression**. *Psychiatr Clin North Am*. 2012; **35**(1): 1–14.  
[PubMed Abstract](#) | [Publisher Full Text](#) | [Free Full Text](#)
- Murray CJ, Atkinson C, Bhalla K, *et al.*: **The state of US health, 1990–2010: burden of diseases, injuries, and risk factors**. *JAMA*. 2013; **310**(6): 591–608.  
[PubMed Abstract](#) | [Publisher Full Text](#) | [Free Full Text](#)
-  Trivedi MH, Rush AJ, Wisniewski SR, *et al.*: **Evaluation of outcomes with**



- citalopram for depression using measurement-based care in STAR\*D: implications for clinical practice. *Am J Psychiatry*. 2006; 163(1): 28–40.  
[PubMed Abstract](#) | [Publisher Full Text](#) | [F1000 Recommendation](#)
6. Curtin SC, Warner M, Hedegaard H: Increase in Suicide in the United States, 1999–2014. *NCHS Data Brief*. 2016; (241): 1–8.  
[PubMed Abstract](#)
  7. National Violent Death Reporting System. CDC. 2015.  
[Reference Source](#)
  8. Berman RM, Cappiello A, Anand A, et al.: Antidepressant effects of ketamine in depressed patients. *Biol Psychiatry*. 2000; 47(4): 351–4.  
[PubMed Abstract](#) | [Publisher Full Text](#)
  9. Zarate CA Jr, Singh JB, Carlson PJ, et al.: A randomized trial of an N-methyl-D-aspartate antagonist in treatment-resistant major depression. *Arch Gen Psychiatry*. 2006; 63(8): 856–64.  
[PubMed Abstract](#) | [Publisher Full Text](#) | [F1000 Recommendation](#)
  10. Wilkinson ST, Ballard ED, Bloch MH, et al.: The Effect of a Single Dose of Intravenous Ketamine on Suicidal Ideation: A Systematic Review and Individual Participant Data Meta-Analysis. *Am J Psychiatry*. 2018; 175(2): 150–8.  
[PubMed Abstract](#) | [Publisher Full Text](#) | [Free Full Text](#) | [F1000 Recommendation](#)
  11. Sanacora G, Frye MA, McDonald W, et al.: A Consensus Statement on the Use of Ketamine in the Treatment of Mood Disorders. *JAMA Psychiatry*. 2017; 74(4): 399–405.  
[PubMed Abstract](#) | [Publisher Full Text](#)
  12. Wilkinson ST, Toprak M, Turner MS, et al.: A Survey of the Clinical, Off-Label Use of Ketamine as a Treatment for Psychiatric Disorders. *Am J Psychiatry*. 2017; 174(7): 695–6.  
[PubMed Abstract](#) | [Publisher Full Text](#) | [Free Full Text](#) | [F1000 Recommendation](#)
  13. Newport DJ, Carpenter LL, McDonald WM, et al.: Ketamine and Other NMDA Antagonists: Early Clinical Trials and Possible Mechanisms in Depression. *Am J Psychiatry*. 2015; 172(10): 950–66.  
[PubMed Abstract](#) | [Publisher Full Text](#)
  14. Duman RS, Aghajanian GK, Sanacora G, et al.: Synaptic plasticity and depression: new insights from stress and rapid-acting antidepressants. *Nat Med*. 2016; 22(3): 238–49.  
[PubMed Abstract](#) | [Publisher Full Text](#) | [Free Full Text](#)
  15. McEwen BS, Eiland L, Hunter RG, et al.: Stress and anxiety: structural plasticity and epigenetic regulation as a consequence of stress. *Neuropharmacology*. 2012; 62(1): 3–12.  
[PubMed Abstract](#) | [Publisher Full Text](#) | [Free Full Text](#)
  16. Morrison JH, Baxter MG: The ageing cortical synapse: hallmarks and implications for cognitive decline. *Nat Rev Neurosci*. 2012; 13(4): 240–50.  
[PubMed Abstract](#) | [Publisher Full Text](#) | [Free Full Text](#)
  17. Kang HJ, Voleti B, Hajsan T, et al.: Decreased expression of synapse-related genes and loss of synapses in major depressive disorder. *Nat Med*. 2012; 18(9): 1413–7.  
[PubMed Abstract](#) | [Publisher Full Text](#) | [Free Full Text](#) | [F1000 Recommendation](#)
  18. Li N, Lee B, Liu RJ, et al.: mTOR-dependent synapse formation underlies the rapid antidepressant effects of NMDA antagonists. *Science*. 2010; 329(5994): 959–64.  
[PubMed Abstract](#) | [Publisher Full Text](#) | [Free Full Text](#) | [F1000 Recommendation](#)
  19. Li N, Liu RJ, Dwyer JM, et al.: Glutamate N-methyl-D-aspartate receptor antagonists rapidly reverse behavioral and synaptic deficits caused by chronic stress exposure. *Biol Psychiatry*. 2011; 69(8): 754–61.  
[PubMed Abstract](#) | [Publisher Full Text](#) | [Free Full Text](#) | [F1000 Recommendation](#)
  20. Duman RS, Aghajanian GK: Synaptic dysfunction in depression: potential therapeutic targets. *Science*. 2012; 338(6103): 68–72.  
[PubMed Abstract](#) | [Publisher Full Text](#) | [Free Full Text](#) | [F1000 Recommendation](#)
  21. Yang Y, Cui Y, Sang K, et al.: Ketamine blocks bursting in the lateral habenula to rapidly relieve depression. *Nature*. 2018; 554(7692): 317–22.  
[PubMed Abstract](#) | [Publisher Full Text](#) | [F1000 Recommendation](#)
  22. Moghaddam B, Adams B, Verma A, et al.: Activation of glutamatergic neurotransmission by ketamine: a novel step in the pathway from NMDA receptor blockade to dopaminergic and cognitive disruptions associated with the prefrontal cortex. *J Neurosci*. 1997; 17(8): 2921–7.  
[PubMed Abstract](#) | [Publisher Full Text](#)
  23. Widman AJ, McMahon LL: Disinhibition of CA1 pyramidal cells by low-dose ketamine and other antagonists with rapid antidepressant efficacy. *Proc Natl Acad Sci U S A*. 2018; 115(13): E3007–E3016.  
[PubMed Abstract](#) | [Publisher Full Text](#) | [Free Full Text](#) | [F1000 Recommendation](#)
  24. Autry AE, Adachi M, Nosyreva E, et al.: NMDA receptor blockade at rest triggers rapid behavioural antidepressant responses. *Nature*. 2011; 475(7354): 91–5.  
[PubMed Abstract](#) | [Publisher Full Text](#) | [Free Full Text](#) | [F1000 Recommendation](#)
  25. Liu RJ, Lee FS, Li XY, et al.: Brain-derived neurotrophic factor Val66Met allele impairs basal and ketamine-stimulated synaptogenesis in prefrontal cortex. *Biol Psychiatry*. 2012; 71(11): 996–1005.  
[PubMed Abstract](#) | [Publisher Full Text](#) | [Free Full Text](#)
  26. Lepack AE, Fuchikami M, Dwyer JM, et al.: BDNF release is required for the behavioral actions of ketamine. *Int J Neuropsychopharmacol*. 2014; 18(1): pii: pyu033.  
[PubMed Abstract](#) | [Publisher Full Text](#) | [Free Full Text](#)
  27. Kato T, Fogaça MV, Deyama S, et al.: BDNF release and signaling are required for the antidepressant actions of GLYX-13. *Mol Psychiatry*. 2017.  
[PubMed Abstract](#) | [Publisher Full Text](#)
  28. Liu RJ, Fuchikami M, Dwyer JM, et al.: GSK-3 inhibition potentiates the synaptogenic and antidepressant-like effects of subthreshold doses of ketamine. *Neuropsychopharmacology*. 2013; 38(11): 2268–77.  
[PubMed Abstract](#) | [Publisher Full Text](#) | [Free Full Text](#)
  29. Dwyer JM, Lepack AE, Duman RS: mTOR activation is required for the antidepressant effects of mGluR<sub>2/3</sub> blockade. *Int J Neuropsychopharmacol*. 2012; 15(4): 429–34.  
[PubMed Abstract](#) | [Publisher Full Text](#) | [Free Full Text](#)
  30. Yang C, Li WY, Yu HY, et al.: Tramadol pretreatment enhances ketamine-induced antidepressant effects and increases mammalian target of rapamycin in rat hippocampus and prefrontal cortex. *J Biomed Biotechnol*. 2012; 2012: 175619.  
[PubMed Abstract](#) | [Publisher Full Text](#) | [Free Full Text](#)
  31. Carrier N, Kabbaj M: Sex differences in the antidepressant-like effects of ketamine. *Neuropharmacology*. 2013; 70: 27–34.  
[PubMed Abstract](#) | [Publisher Full Text](#)
  32. Miller OH, Yang L, Wang CC, et al.: GluN2B-containing NMDA receptors regulate depression-like behavior and are critical for the rapid antidepressant actions of ketamine. *eLife*. 2014; 3: e03581.  
[PubMed Abstract](#) | [Publisher Full Text](#) | [Free Full Text](#) | [F1000 Recommendation](#)
  33. Paul RK, Singh NS, Khadeer M, et al.: (R,S)-Ketamine metabolites (R,S)-norketamine and (2S,6S)-hydroxynorketamine increase the mammalian target of rapamycin function. *Anesthesiology*. 2014; 121(1): 149–59.  
[PubMed Abstract](#) | [Publisher Full Text](#) | [Free Full Text](#)
  34. Zhou W, Wang N, Yang C, et al.: Ketamine-induced antidepressant effects are associated with AMPA receptors-mediated upregulation of mTOR and BDNF in rat hippocampus and prefrontal cortex. *Eur Psychiatry*. 2014; 29(7): 419–23.  
[PubMed Abstract](#) | [Publisher Full Text](#)
  35. Chiu CT, Scheuing L, Liu G, et al.: The mood stabilizer lithium potentiates the antidepressant-like effects and ameliorates oxidative stress induced by acute ketamine in a mouse model of stress. *Int J Neuropsychopharmacol*. 2014; 18(6): pii: pyu102.  
[PubMed Abstract](#) | [Publisher Full Text](#) | [Free Full Text](#)
  36. Pazini FL, Cunha MP, Rosa JM, et al.: Creatine, Similar to Ketamine, Counteracts Depressive-Like Behavior Induced by Corticosterone via PI3K/Akt/mTOR Pathway. *Mol Neurobiol*. 2016; 53(10): 6818–34.  
[PubMed Abstract](#) | [Publisher Full Text](#)
  37. Zhang YH, Zhang J, Song JN, et al.: The PI3K-AKT-mTOR pathway activates recovery from general anesthesia. *Oncotarget*. 2016; 7(27): 40939–52.  
[PubMed Abstract](#) | [Publisher Full Text](#) | [Free Full Text](#)
  38. Wang CQ, Ye Y, Chen F, et al.: Posttraumatic administration of a sub-anesthetic dose of ketamine exerts neuroprotection via attenuating inflammation and autophagy. *Neuroscience*. 2017; 343: 30–8.  
[PubMed Abstract](#) | [Publisher Full Text](#)
  39. Rame M, Caudal D, Schenker E, et al.: Clozapine counteracts a ketamine-induced depression of hippocampal-prefrontal neuroplasticity and alters signaling pathway phosphorylation. *PLoS One*. 2017; 12(5): e0177036.  
[PubMed Abstract](#) | [Publisher Full Text](#) | [Free Full Text](#)
  40. Harraz MM, Tyagi R, Cortés P, et al.: Antidepressant action of ketamine via mTOR is mediated by inhibition of nitric oxide degradation. *Mol Psychiatry*. 2016; 21(3): 313–9.  
[PubMed Abstract](#) | [Publisher Full Text](#) | [Free Full Text](#) | [F1000 Recommendation](#)
  41. Liu RJ, Duman C, Kato T, et al.: GLYX-13 Produces Rapid Antidepressant Responses with Key Synaptic and Behavioral Effects Distinct from Ketamine. *Neuropsychopharmacology*. 2017; 42(6): 1231–42.  
[PubMed Abstract](#) | [Publisher Full Text](#) | [Free Full Text](#) | [F1000 Recommendation](#)
  42. Yang C, Ren Q, Qu Y, et al.: Mechanistic Target of Rapamycin-Independent Antidepressant Effects of (R)-Ketamine in a Social Defeat Stress Model. *Biol Psychiatry*. 2018; 83(1): 18–28.  
[PubMed Abstract](#) | [Publisher Full Text](#) | [F1000 Recommendation](#)
  43. Popp S, Behl B, Joshi JJ, et al.: In search of the mechanisms of ketamine's antidepressant effects: How robust is the evidence behind the mTOR activation hypothesis [version 1; referees: 1 approved, 1 approved with reservations] *F1000Res*. 2016; 5: 634.  
[Publisher Full Text](#) | [F1000 Recommendation](#)
  44. Sanacora G, Schatzberg AF: Ketamine: promising path or false prophecy in the development of novel therapeutics for mood disorders? *Neuropsychopharmacology*. 2015; 40(5): 1307.  
[PubMed Abstract](#) | [Publisher Full Text](#) | [Free Full Text](#)
  45. Haroon E, Miller AH: Inflammation Effects on Brain Glutamate in Depression: Mechanistic Considerations and Treatment Implications. *Curr Top Behav Neurosci*. 2017; 31: 173–98.  
[PubMed Abstract](#) | [Publisher Full Text](#) | [F1000 Recommendation](#)
  46. Sanacora G, Johnson MR, Khan A, et al.: Adjunctive Lanicemine (AZD6765) in Patients with Major Depressive Disorder and History of Inadequate Response to Antidepressants: A Randomized, Placebo-Controlled Study. *Neuropsychopharmacology*. 2017; 42(4): 844–53.  
[PubMed Abstract](#) | [Publisher Full Text](#) | [Free Full Text](#)
  47. Zarate CA Jr, Singh JB, Quiroz JA, et al.: A double-blind, placebo-controlled study of memantine in the treatment of major depression. *Am J Psychiatry*.



- 2006; **163**(1): 153–5.  
[PubMed Abstract](#) | [Publisher Full Text](#)
48. Sanacora G, Smith MA, Pathak S, *et al.*: **Lanicemine: a low-trapping NMDA channel blocker produces sustained antidepressant efficacy with minimal psychotomimetic adverse effects.** *Mol Psychiatry*. 2014; **19**(9): 978–85.  
[PubMed Abstract](#) | [Publisher Full Text](#) | [Free Full Text](#)
49. Yang C, Shirayama Y, Zhang JC, *et al.*: **R-ketamine: a rapid-onset and sustained antidepressant without psychotomimetic side effects.** *Transl Psychiatry*. 2015; **5**(9): e632.  
[PubMed Abstract](#) | [Publisher Full Text](#) | [Free Full Text](#)
50. **F** Zanos P, Moaddel R, Morris PJ, *et al.*: **NMDAR inhibition-independent antidepressant actions of ketamine metabolites.** *Nature*. 2016; **533**(7604): 481–6.  
[PubMed Abstract](#) | [Publisher Full Text](#) | [Free Full Text](#) | [F1000 Recommendation](#)
51. Fukumoto K, kato T, Li X-Y, *et al.*: **Role of BDNF/mTORC1 signaling in the long-lasting antidepressant effects of (2R,6R)-hydroxynorketamine.** *American College of Neuropsychopharmacology*. 2017
52. **F** Yang C, Qu Y, Abe M, *et al.*: **(R)-Ketamine Shows Greater Potency and Longer Lasting Antidepressant Effects Than Its Metabolite (2R,6R)-Hydroxynorketamine.** *Biol Psychiatry*. 2017; **82**(5): e43–e44.  
[PubMed Abstract](#) | [Publisher Full Text](#) | [F1000 Recommendation](#)
53. **F** Shirayama Y, Hashimoto K: **Lack of Antidepressant Effects of (2R,6R)-Hydroxynorketamine in a Rat Learned Helplessness Model: Comparison with (R)-Ketamine.** *Int J Neuropsychopharmacol*. 2018; **21**(1): 84–8.  
[PubMed Abstract](#) | [Publisher Full Text](#) | [Free Full Text](#) | [F1000 Recommendation](#)
54. **F** Suzuki K, Nosyreva E, Hunt KW, *et al.*: **Effects of a ketamine metabolite on synaptic NMDAR function.** *Nature*. 2017; **546**(7659): E1–E3.  
[PubMed Abstract](#) | [Publisher Full Text](#) | [F1000 Recommendation](#)
55. Preskorn SH, Baker B, Kolluri S, *et al.*: **An innovative design to establish proof of concept of the antidepressant effects of the NR2B subunit selective N-methyl-D-aspartate antagonist, CP-101,606, in patients with treatment-refractory major depressive disorder.** *J Clin Psychopharmacol*. 2008; **28**(6): 631–7.  
[PubMed Abstract](#) | [Publisher Full Text](#)
56. Ibrahim L, Diaz Granados N, Jolkovsky L, *et al.*: **A Randomized, placebo-controlled, crossover pilot trial of the oral selective NR2B antagonist MK-0657 in patients with treatment-resistant major depressive disorder.** *J Clin Psychopharmacol*. 2012; **32**(4): 551–7.  
[PubMed Abstract](#) | [Publisher Full Text](#) | [Free Full Text](#)
57. Maeng S, Zarate CA Jr, Du J, *et al.*: **Cellular mechanisms underlying the antidepressant effects of ketamine: role of alpha-amino-3-hydroxy-5-methylisoxazole-4-propionic acid receptors.** *Biol Psychiatry*. 2008; **63**(4): 349–52.  
[PubMed Abstract](#) | [Publisher Full Text](#)
58. **F** Moskal JR, Burgdorf JS, Stanton PK, *et al.*: **The Development of Rapastinel (Formerly GLYX-13); A Rapid Acting and Long Lasting Antidepressant.** *Curr Neuropharmacol*. 2017; **15**(1): 47–56.  
[PubMed Abstract](#) | [Publisher Full Text](#) | [Free Full Text](#) | [F1000 Recommendation](#)
59. Burgdorf J, Zhang XL, Nicholson KL, *et al.*: **GLYX-13, a NMDA receptor glycine-site functional partial agonist, induces antidepressant-like effects without ketamine-like side effects.** *Neuropsychopharmacology*. 2013; **38**(5): 729–42.  
[PubMed Abstract](#) | [Publisher Full Text](#) | [Free Full Text](#)
60. **F** Yang B, Zhang JC, Han M, *et al.*: **Comparison of R-ketamine and rapastinel antidepressant effects in the social defeat stress model of depression.** *Psychopharmacology (Berl)*. 2016; **233**(19–20): 3647–57.  
[PubMed Abstract](#) | [Publisher Full Text](#) | [Free Full Text](#) | [F1000 Recommendation](#)
61. Preskorn S, Macaluso M, Mehra DO, *et al.*: **Randomized proof of concept trial of GLYX-13, an N-methyl-D-aspartate receptor glycine site partial agonist, in major depressive disorder nonresponsive to a previous antidepressant agent.** *J Psychiatr Pract*. 2015; **21**(2): 140–9.  
[PubMed Abstract](#) | [Publisher Full Text](#)
62. **F** Garay RP, Zarate CA Jr, Charpeaud T, *et al.*: **Investigational drugs in recent clinical trials for treatment-resistant depression.** *Expert Rev Neurother*. 2017; **17**(6): 593–609.  
[PubMed Abstract](#) | [Publisher Full Text](#) | [Free Full Text](#) | [F1000 Recommendation](#)
63. Dwyer JM, Lepack AE, Duman RS: **mGluR2/3 blockade produces rapid and long-lasting reversal of anhedonia caused by chronic stress exposure.** *J Mol Psychiatry*. 2013; **1**(1): 15.  
[PubMed Abstract](#) | [Publisher Full Text](#) | [Free Full Text](#)
64. Koike H, Iijima M, Chaki S: **Involvement of the mammalian target of rapamycin signaling in the antidepressant-like effect of group II metabotropic glutamate receptor antagonists.** *Neuropharmacology*. 2011; **61**(8): 1419–23.  
[PubMed Abstract](#) | [Publisher Full Text](#)
65. Furey ML, Drevets WC: **Antidepressant efficacy of the antimuscarinic drug scopolamine: a randomized, placebo-controlled clinical trial.** *Arch Gen Psychiatry*. 2006; **63**(10): 1121–9.  
[PubMed Abstract](#) | [Publisher Full Text](#) | [Free Full Text](#)
66. Drevets WC, Furey ML: **Replication of scopolamine's antidepressant efficacy in major depressive disorder: a randomized, placebo-controlled clinical trial.** *Biol Psychiatry*. 2010; **67**(5): 432–8.  
[PubMed Abstract](#) | [Publisher Full Text](#) | [Free Full Text](#)
67. Voleti B, Navarria A, Liu RJ, *et al.*: **Scopolamine rapidly increases mammalian target of rapamycin complex 1 signaling, synaptogenesis, and antidepressant behavioral responses.** *Biol Psychiatry*. 2013; **74**(10): 742–9.  
[PubMed Abstract](#) | [Publisher Full Text](#) | [Free Full Text](#)
68. Ghosal S, Bang E, Yue W, *et al.*: **Activity-Dependent Brain-Derived Neurotrophic Factor Release Is Required for the Rapid Antidepressant Actions of Scopolamine.** *Biol Psychiatry*. 2018; **83**(1): 29–37.  
[PubMed Abstract](#) | [Publisher Full Text](#) | [Free Full Text](#)
69. Wohleb ES, Wu M, Gerhard DM, *et al.*: **GABA interneurons mediate the rapid antidepressant-like effects of scopolamine.** *J Clin Invest*. 2016; **126**(7): 2482–94.  
[PubMed Abstract](#) | [Publisher Full Text](#) | [Free Full Text](#)
70. Fischell J, Van Dyke AM, Kvarita MD, *et al.*: **Rapid Antidepressant Action and Restoration of Excitatory Synaptic Strength After Chronic Stress by Negative Modulators of Alpha5-Containing GABA<sub>A</sub> Receptors.** *Neuropsychopharmacology*. 2015; **40**(11): 2499–509.  
[PubMed Abstract](#) | [Publisher Full Text](#) | [Free Full Text](#)
71. Zanos P, Nelson ME, Highland JN, *et al.*: **A Negative Allosteric Modulator for  $\alpha 5$  Subunit-Containing GABA Receptors Exerts a Rapid and Persistent Antidepressant-Like Action without the Side Effects of the NMDA Receptor Antagonist Ketamine in Mice.** *eNeuro*. 2017; **4**(1): pii: ENEURO.0285-16.2017.  
[PubMed Abstract](#) | [Publisher Full Text](#) | [Free Full Text](#)
72. Efeyan A, Comb WC, Sabatini DM: **Nutrient-sensing mechanisms and pathways.** *Nature*. 2015; **517**(7534): 302–10.  
[PubMed Abstract](#) | [Publisher Full Text](#) | [Free Full Text](#)
73. Maguire J, Mody I: **GABA<sub>A</sub> R plasticity during pregnancy: relevance to postpartum depression.** *Neuron*. 2008; **59**(2): 207–13.  
[PubMed Abstract](#) | [Publisher Full Text](#) | [Free Full Text](#)
74. Kanes S, Colquhoun H, Gunduz-Bruce H, *et al.*: **Brexanolone (SAGE-547 injection) in post-partum depression: a randomised controlled trial.** *Lancet*. 2017; **390**(10093): 480–9.  
[PubMed Abstract](#) | [Publisher Full Text](#)
75. Kanes SJ, Colquhoun H, Doherty J, *et al.*: **Open-label, proof-of-concept study of brexanolone in the treatment of severe postpartum depression.** *Hum Psychopharmacol*. 2017; **32**(2): e2576.  
[PubMed Abstract](#) | [Publisher Full Text](#) | [Free Full Text](#)

# Open Peer Review

Current Referee Status:



## Editorial Note on the Review Process

F1000 Faculty Reviews are commissioned from members of the prestigious F1000 Faculty and are edited as a service to readers. In order to make these reviews as comprehensive and accessible as possible, the referees provide input before publication and only the final, revised version is published. The referees who approved the final version are listed with their names and affiliations but without their reports on earlier versions (any comments will already have been addressed in the published version).

## The referees who approved this article are:

### Version 1

1 **Sanjay J Mathew** <sup>1,2</sup> <sup>1</sup> Menninger Department of Psychiatry and Behavioral Sciences, Baylor College of Medicine, Houston, TX, USA

<sup>2</sup> Michael E. DeBakey VA Medical Center, Houston, USA

**Competing Interests:** Sanjay J. Mathew receives research support from Janssen and NeuroRx, and consulting fees from Allergan, Alkermes, and Fortress Biotech.

1 **Dan V. Iosifescu** Nathan Kline Institute and New York University School of Medicine, New York, USA

**Competing Interests:** No competing interests were disclosed.

1 **Kenji Hashimoto** Division of Clinical Neuroscience, Chiba University Center for Forensic Mental Health, Chiba, Japan

**Competing Interests:** Dr. Hashimoto is an inventor on a filed patent application on "The use of (R)-ketamine in the treatment of psychiatric diseases" by Chiba University.

The benefits of publishing with F1000Research:

- Your article is published within days, with no editorial bias
- You can publish traditional articles, null/negative results, case reports, data notes and more
- The peer review process is transparent and collaborative
- Your article is indexed in PubMed after passing peer review
- Dedicated customer support at every stage

For pre-submission enquiries, contact [research@f1000.com](mailto:research@f1000.com)

F1000Research