

# Performance of Photoscreener in Detection of Refractive Error in All Age Groups and Amblyopia Risk Factors in Children in a Tribal District of Odisha: The Tribal Odisha Eye Disease Study (TOES) # 3

Lapam Panda<sup>1</sup>, Umasankar Barik<sup>2</sup>, Suryasmita Nayak<sup>1</sup>, Biswajit Barik<sup>2</sup>, Gyanaranjan Behera<sup>2</sup>, Ramesh Kekunnaya<sup>3</sup>, and Taraprasad Das<sup>1</sup>

<sup>1</sup> Indian Oil Centre for Rural Eye Health, L V Prasad Eye Institute, Bhubaneswar, India

<sup>2</sup> Naraindas Morbai Budhrani Eye Centre, L V Prasad Eye Institute, Rayagada, India

<sup>3</sup> Jasti V Ramanamma Children's Eye Care Center, L V Prasad Eye Institute, Hyderabad, India

**Correspondence:** Taraprasad Das, L V Prasad Eye Institute, Road # 2, Hyderabad 500034 India. email: [tpd@lvpei.org](mailto:tpd@lvpei.org)

**Received:** 20 August 2017

**Accepted:** 18 April 2018

**Published:** 4 June 2018

**Keywords:** refraction; photo-screener; children's vision

**Citation:** Panda L, Barik U, Nayak S, Barik B, Behera G, Kekunnaya R, Das T. Performance of photoscreener in detection of refractive error in all age groups and amblyopia risk factors in children in a tribal district of Odisha: the Tribal Odisha Eye Disease Study (TOES) # 3. *Trans Vis Sci Tech.* 2018;7(3):12, <https://doi.org/10.1167/tvst.7.3.12> Copyright 2018 The Authors

**Purpose:** To evaluate effectiveness of Welch Allyn Spot Vision Screener in detecting refractive error in all age groups and amblyopia risk factors in children in a tribal district of India.

**Methods:** All participants received dry retinoscopy and photorefractometry; children also received cycloplegic retinoscopy. Statistical analysis included Bland-Altman and coefficient of determination ( $R^2$ ).

**Results:** Photoscreener could not elicit a response in 113 adults and 5 children of 580 recruited participants. In Bland-Altman analysis mean difference of Spot screener spherical equivalent (SSSE) and dry retinoscopy spherical equivalent (DRSE) was 0.32 diopters (D) in adults and 0.18 D in children; this was an overestimation of hyperopia and underestimation of myopia. In Bland-Altman analysis of SSSE and cycloplegic retinoscopy spherical equivalent (CRSE) the mean difference was  $-0.30$  D in children; this was an overestimation of myopia and underestimation of hyperopia. In regression analysis the relationship between SSSE and DRSE was poor in adults ( $R^2 = 0.50$ ) and good in children ( $R^2 = 0.92$ ). Cubic regression model for Spot versus cycloplegic retinoscopy in children was:  $CRSE = 0.34 + 0.85 SSSE - 0.01 SSSE^2 + 0.006 SSSE^3$ . It was 87% accurate. Sensitivity and specificity of Spot in detecting amblyopia risk factors (2013 American Association for Pediatric Ophthalmology and Strabismus [AAPOS] criteria) was 93.3% and 96.9% respectively. Sensitivity of Spot screener in detection of amblyopia was 72%.

**Conclusions:** Photoscreener has 87% accuracy in refraction in children. Its value could be used for subjective correction tests.

**Translational Relevance:** Photoscreening could complement traditional retinoscopy to address refractive error in children in a resource-limited facility region.

## Introduction

Uncorrected refractive error is the most common cause of visual impairment and second common cause of blindness in the world.<sup>1,2</sup> Refractive error impacts the quality of life in all age groups.<sup>3</sup> The problem is more serious in children as it is likely to also impact their mental wellbeing and intellectual development.<sup>4</sup>

Amblyopia is a reversible deficit of vision that should be treated within the sensitive period for visual development.<sup>5</sup> Risk factors for amblyopia include strabismus, ametropia, anisometropia, and optical deprivation.<sup>6</sup> The benefits of screening for refractive error are always beyond refractive error (including presbyopia) correction itself. In adults, it helps in detecting many blinding disorders, such as cataract, glaucoma, and diabetic retinopathy; in children, it

helps in detection of amblyopia, strabismus, and childhood cataract.<sup>7,8</sup>

Traditionally, objective retinoscopy and subjective corrections are the essential steps of screening for refractive error. Classically, it is performed using a streak retinoscope and neutralizing lenses, which needs training and has a significant learning curve.<sup>9</sup> An autorefractor could be a convenient alternative to retinoscopy. Photorefractometry is a technique of autorefraction that uses a camera to take images of undilated eyes. The estimate of the eye's defocus is derived from the distribution of reflected light across the subject's pupil.<sup>10</sup> The Welch Allyn Spot Vision Screener (Skaneateles Falls, NY) is a photorefractor.<sup>11</sup> It is a noninvasive, handheld, portable device that automatically captures vision data for both eyes concomitantly in all ages. The device creates a diagram with the location of the eyes, demonstrating strabismus when present as well as an autorefractive reading. The measuring range extends up to  $\pm 7.50$  diopters (D) for spherical errors and  $\pm 3.50$  D for cylindrical errors. Additionally, it also measures pupil size, interpupillary distance, and gaze deviation. This device also flags a referral for complete eye examination if significant refractive error, anisometropia, anisocoria, or strabismus exists.<sup>12,13</sup> The additional advantages include its portability, power supply from batteries, little time ( $\sim 10$  seconds) to complete refraction, simultaneous capture of both eyes, and minimal training to operate.<sup>14,15</sup>

We evaluated the effectiveness of Spot in detecting refractive error in all age groups in Raygada, a tribal district of Odisha, India. We chose this district because we had planned for a district-wise school children screening. Additionally, we used the American Association of Pediatric Ophthalmology and Strabismus (AAPOS) 2013 guidelines to measure its ability to detecting amblyopia risk factors in children 4- to 7-years old.

## Methods

The ethics committee of L V Prasad Eye Institute, Bhubaneswar, India (2016-15-CB-14) approved this study. The research protocol adhered to the provision of the Declaration of Helsinki for research involving human beings. Written informed consent was obtained from all adult participants and accompanying relations of children.

All patients attending the outpatient department of Naraindas Morbai Budhrani eye centre and JK Centre for Tribal Eye Health, Raygada, Odisha

(India) in April 2017 were recruited for the study. We excluded the patients who had received any intraocular surgery within 1 month and those unwilling to sign the informed consent. A comprehensive examination included a detailed history, measurement of presenting (with spectacles, when available) and corrected distance and near vision, photoscreening, dry retinoscopy, lid and adnexal examination, Hirschberg test, cover-uncover and prism cover test, slit-lamp examination, and dilated fundus examination. Dilatation in the adults was performed with tropicamide 0.8% and phenylephrine hydrochloride 5%; in children (<16 years) dilatation was performed with cyclopentolate 1%. Additionally, a cycloplegic photoscreening, traditional cycloplegic retinoscopy, and subjective correction after cycloplegic examination were performed in children.

In every stage, the photorefractometry was performed by an optical dispensing person, not trained in refraction, but trained to using the Spot instrument. The procedure of examination was as per the manual.<sup>16</sup> While an optometrist performed the retinoscopy, a comprehensive ophthalmologist performed the rest of the ocular examinations. The data obtained from photorefractometry was masked to the optometrist during both objective refraction (using a streak retinoscope) and subjective correction. Refraction obtained by the Spot screener and retinoscopy was converted into median spherical equivalent (M), J45, and J180 vectors for statistical analysis.

The formula for calculating these 3 parameters were as follows:

$$M(\text{spherical equivalent}) = S(\text{sphere}) + C(\text{Cylinder}/2) \quad (1)$$

$$J180 = -(Cylinder/2) \cos 2\alpha \quad (2)$$

$$J45 = -(Cylinder/2) \sin 2\alpha \quad (3)$$

where  $2\alpha$  represents the cylindrical axis.

## Statistical Analysis

The data were entered into an Excel sheet (Microsoft, Redmond, WA) and were analyzed using R statistics version 3.2.5 (2016-04-14; Vienna, Austria). The mean refractive error was calculated with the Spot screener and dry retinoscopy for adults. The mean refractive error was calculated with the Spot screener, dry retinoscopy, cycloplegic retinoscopy, and Spot cycloplegic retinoscopy in children. A paired *t*-test was applied to test if the difference between the

results obtained from Spot photoscreener and retinoscopy was significant. Dry retinoscopy in adults and cycloplegic retinoscopy in children were considered the gold standards. Linear, quadratic, and cubic models were constructed to assess the correlation between the results obtained from these methods. The coefficient of determination ( $R^2$ ) was used to determine the close relationship of variables in the curve estimation regression. Bland-Altman plots were used to assess the agreement between Spot and retinoscopy. The spherical equivalent (SE) with Spot was compared with dry retinoscopy in adults and with both dry and cycloplegic retinoscopy in children. SE of cycloplegic refraction using the Spot was also compared with the cycloplegic retinoscopy using the streak retinoscope in children. Calculation was performed for myopes and hyperopes separately. Percentage of participants with a difference within  $\pm 1$  D between the Spot screener and retinoscopy were assessed.

Amblyopia risk factors based on the AAPOS 2013 guidelines for ages over 4 years were as follows: hyperopia greater than 3.5 D in any meridian, myopia greater than 1.5 D in any meridian, astigmatism greater than 1.5 D in any meridian, anisometropia greater than 1.5 D, and manifest strabismus greater than 8 prism diopters (PD) in primary position.<sup>17</sup> The results of both Spot and retinoscopy were analyzed based on these criteria.

Myopia was defined as refractive error more than 0.5 D and hypermetropia as more than 1.0 D. Emmetropia was defined as refractive error between  $-0.5$  D and 1.0 D. A child was considered emmetrope only when both eyes did not have refractive error; otherwise the child was grouped under one of the refractive errors, myopia or hypermetropia, as per the refraction.

## Results

In the study period of 1 month, 580 people were recruited. Photoscreener failed to elicit usable response in 118 participants (5 children and 113 adults). The causes of failure in these people were cataract ( $n = 72$ ), small pupil ( $n = 34$ ), pseudophakia ( $n = 4$ ), high hypermetropia ( $n = 3$ ), pterygium involving the visual axis, microcornea ( $n = 2$  each), and adherent leukoma and corneal scar ( $n = 1$  each). Thus, the following photoscreener results were obtained from 462 participants (924 eyes): 177 children (mean age:  $10.56 \pm 2.89$ , range: 4–16 years) and 285 adults (mean age:  $37.48 \pm 13.95$ , range: 17–75 years). There were 230

**Table 1.** Age and Sex Distribution of Study Cohort

Age Range	Male	Female	Total
4–7 y	20	17	37
7–16 y	65	75	140
17–39 y	70	90	160
>40 y	77	48	125
Total	232	230	462

males including 85 children, and 232 females including 92 children. The age and sex distribution is shown in Table 1. The range of refractive errors (SE) measured with dry retinoscopy in adults and cycloplegic retinoscopy in children was from  $-9.5$  D to  $+8.75$  D. Seventy-eight children also received Spot screener examination after cycloplegic dilatation.

The distribution of refractive error in 177 children was as follows: hypermetropia, 34; myopia, 28; and emmetropia, 115. Amblyopia risk factors as defined by 2013 AAPOS criteria<sup>16</sup> were detected in 24 eyes of 17 children between 4 and 7 years of age. Few children had more than one amblyopic risk factor, and 18 children had amblyopia. The Spot could help detect amblyopia in 11 children (sensitivity 61%), including four ametropic amblyopia (4/4), four anisometric amblyopia (4/9), one meridional amblyopia (1/1), two strabismic amblyopia greater than 8PD (2/2). The Spot could not detect two stimulus deprivation amblyopia (status post cataract surgery) because there is no criteria in Spot to detecting such amblyopia. Thirteen children had intermittent strabismus. The Spot detected constant strabismus in seven children (2 exotropia  $4.5^\circ$ – $6.0^\circ$ ; 2 exotropia  $7.0^\circ$ – $15.0^\circ$ ; 1 esotropia  $7.0^\circ$ – $15.0^\circ$ , 1 each hyper- and hypotropia  $4.5^\circ$ – $6.0^\circ$ ). The ophthalmologists confirmed three patients with strabismus in three patients, all with  $7.0^\circ$ – $15.0^\circ$ .

The mean refractive errors measured with Spot photoscreener and dry retinoscopy for adults and Spot screener, dry retinoscopy, cycloplegic retinoscopy, and cycloplegic Spot screener retinoscopy in children is shown in Table 2. There were statistically significant differences of sphere, cylinder, and SE results obtained from the two methods ( $P < 0.01$ , paired  $t$ -test) but the J180 and J45 did not have any difference in adults. In children, there was statistically significant difference between Spot and cycloretinoscopy for sphere, cylinder, SE, and J45, but no difference in J180. But there is no clinical significance for difference up to 0.50 D. From this perspective there was no clinical significance. The mean difference

**Table 2.** Mean Refractive Error Measured by Different Methods

	Sphere	Cylinder	Axis	SE (D)	J180	J45
Adults, 285 participants						
Spot mean	+0.32	-0.68	81	-0.015	-0.018	0.0041
Retinoscopy (567 eyes)	-0.15	-0.45	61.05	-0.37	-0.038	0.0004
<i>P</i>	0.001*	0.001*	0.001*	0.001*	0.1724	0.8339
Children, 177 participants						
Spot	+0.35	-0.77	80.00	-0.034	-0.062	0.033
Dry retinoscopy	+0.014	-0.608	80.50	-0.289	-0.023	0.132
Cycloretinoscopy	+0.54	-0.68	88.31	+0.202	-0.022	0.153
Cyclo Spot	+1.124	-0.75	75.40	+0.74	+0.041	+0.001
<i>P</i> for Spot vs. dry retinoscopy	0.001*	0.001*	0.911	0.001*	0.1114	0.0002*
<i>P</i> for Spot vs. cycloretinoscopy	0.001*	0.001*	0.063	0.001*	0.1176	0.001*
<i>P</i> for CycloSpot vs. cycloretinoscopy	0.001*	0.856	0.572	0.001*	0.122	0.916

\* Statistically significant.

of refractive errors between different methods is shown in [Table 3](#). The difference in the Spot screener SE and cycloplegic retinoscopy spherical equivalent is plotted against the average in Bland-Altman plot ([Fig. 1](#)).

Regression was used to evaluate the quantitative relationship between the results of the Spot and cycloplegic retinoscopy ([Table 4](#), [Fig. 2](#)). Because cycloplegic retinoscopy is considered the gold standard in children, and because using Spot screener

**Table 3.** Mean Difference, Lower Limit, and Upper Limit of Spherical Equivalent Between Different Methods

	Mean (95% CI)	Upper Limit (95% CI)	Lower Limit (95% CI)	Within $\pm 1$ D
Spot vs. dry retinoscopy in adults	0.32 (0.22–0.43)	2.81 (2.63–2.99)	-2.17 (-2.35 to -1.98)	81.5%
Myope	0.67 (0.50–0.83)	3.34 (3.06–3.61)	-1.99 (-2.27 to 1.71)	77.6%
Hyperope	-0.080 (-0.22 to 0.06)	2.04 (1.7–2.29)	-2.20 (-2.45 to 1.95)	84.5%
J45	0.03 (-0.03 to 0.039)	0.85 (0.78–0.91)	-0.84 (-0.90 to 0.78)	95.4%
J180	0.02 (-0.009 to 0.050)	0.72 (-0.73 to 0.63)	-0.68 (0.67–0.77)	93.8%
Spot vs. dry retinoscopy in children	0.18 (0.13–0.24)	1.25 (1.15–1.34)	-0.86 (-0.96 to -0.76)	91.2%
Myope	0.38 (0.24–0.52)	1.61 (1.38–1.85)	-0.84 (-1.08 to 0.61)	83.7%
Hyperope	0.11 (0.05–0.17)	1.07 (0.96–0.17)	-0.83 (-0.94 to 0.73)	93.8%
Spot vs. cycloretinoscopy in children	-0.30 (-0.37 to -0.23)	0.99 (0.87–1.11)	-1.60 (-1.72 to -1.48)	86.4%
Myopia	0.084 (-0.08 to 0.25)	1.61 (1.32–1.91)	-1.45 (-1.74 to 1.15)	83.7%
Hyperopia	-0.46 (-0.53 to -0.39)	0.59 (0.47–0.71)	-1.52 (1.64–1.41)	87.7%
J45	-0.12 (-0.17 to -0.06)	-1.11 (-1.20 to -1.02)	0.87 (0.77–0.96)	89.8%
J180	-0.03 (-0.08 to 0.00)	-0.95 (-1.04 to -0.87)	0.87 (0.79–0.96)	94.6%
Cyclo Spot vs. cyclorefraction	0.49 (0.38–0.60)	1.86 (1.67–2.05)	-0.88 (-1.07 to -0.68)	91.02%
Myope	0.49 (0.38–0.60)	1.69 (1.50–1.89)	-0.70 (-0.89 to -0.50)	79.16%
Hyperope	0.55 (-0.44 to 0.65)	1.74 (1.55–1.92)	-0.63 (0.82–0.45)	80.6%

CI, confidence interval.



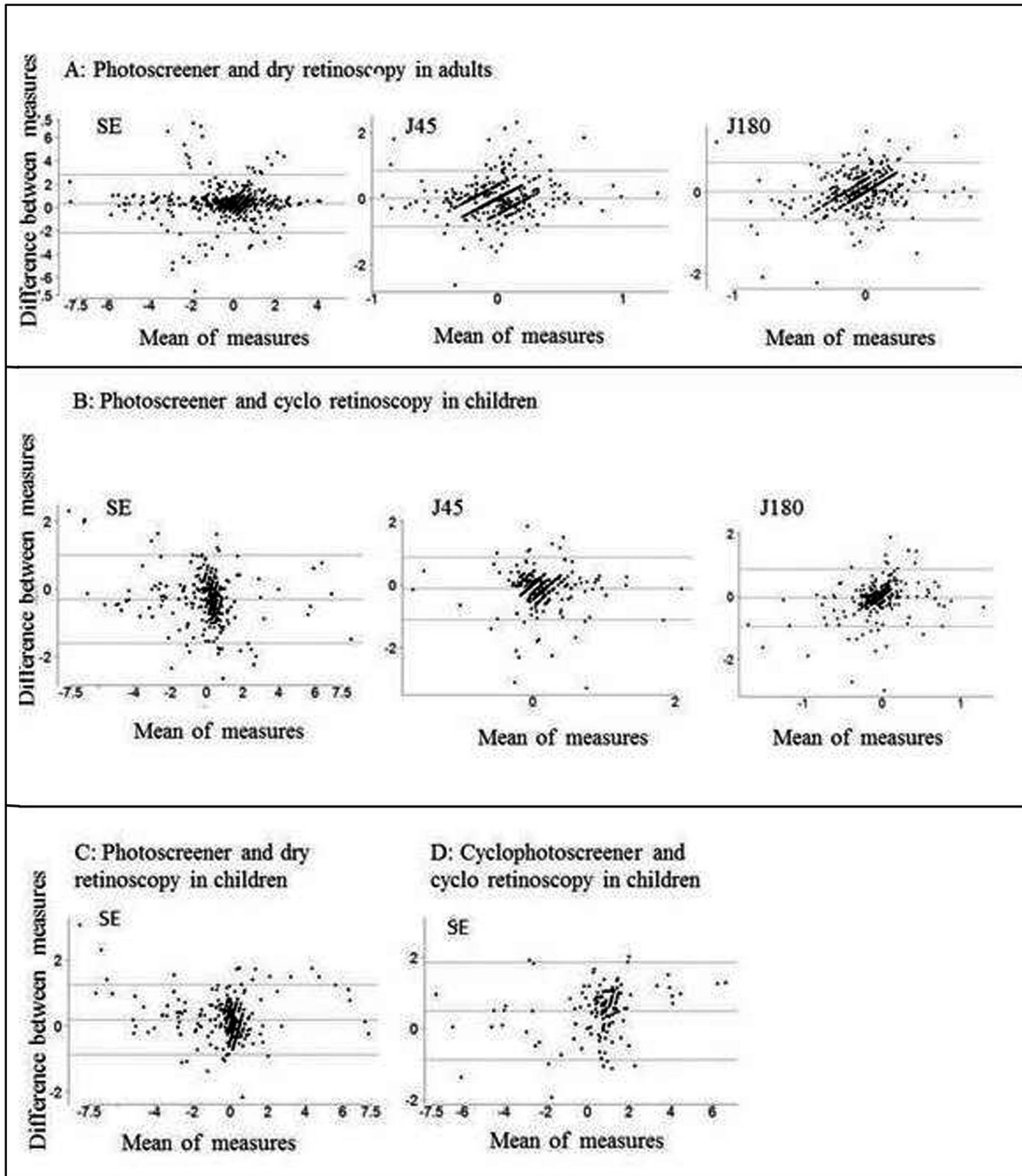


Figure 1. Bland-Altman plots showing agreement between different methods.

after instilling cycloplegics is cumbersome, we derived the relationship between the cycloplegic retinoscopy and the Spot screener retinoscopy (before cycloplegia) with the cubic model; the cubic model had the best fitting ( $R^2 = 0.8728$ ).

The cubic regression model is  $Y = 0.342 + 0.85X - 0.015X^2 + 0.006X^3$ .

Clinically, the 'X' and 'Y' represented Spot screener spherical equivalent (SSSE) and cycloplegic

retinoscopy spherical equivalent (CRSE), respectively, that is,

$$CRSE = 0.342 + 0.852 SSSE - 0.015 SSSE^2 + 0.006 SSSE^3 \quad (4)$$

Thus, one could predict the cycloplegic retinoscopy when the Spot value is known with 87% accuracy

**Table 4.** Coefficient of Determination ( $R^2$ ) Values to Determine the Relationships Between Various Measurements

	$R^2$	$R^2$ in Myope	$R^2$ in Hyperope
Spot vs. dry retinoscopy in adults			
Linear	0.49	0.47	0.24
Quadratic	0.50	0.53	0.46
Cubic	0.50	0.53	0.46
Spot vs. dry retinoscopy in children			
Linear	0.89	0.90	0.82
Quadratic	0.90	0.93	0.86
Cubic	0.92	0.93	0.86
Spot vs. cycloretinoscopy in children			
Linear	0.86	0.83	0.80
Quadratic	0.86	0.88	0.82
Cubic	0.87	0.87	0.83
Cyclo Spot vs. cycloretinoscopy in children			
Linear	0.87	0.77	0.71
Quadratic	0.88	0.76	0.72
Cubic	0.88	0.77	0.72

using the cubic regression model or with 86% accuracy with the linear model.

The sensitivity and specificity of the Spot in detecting amblyopia risk factors according to the AAPOS 2013<sup>17</sup> criteria in the age group of 4 to 7 years are shown in Table 5 and the comparison with other studies using a photo screener is shown in Table 6.

## Discussion

Refractive error is a common disorder in all age groups and it is easy to ameliorate with appropriate refraction and dispensing a pair of spectacles. A faster and accurate refraction is the first step, and this could be done rapidly with autorefraction or photorefraction. We tested one such device (Welch Allyn Spot Vision Screener) and compared it with traditional retinoscopy in adults and with cycloplegic retinoscopy in children.

The mean difference of Spot versus dry retinoscopy was 0.32 D in adults and 0.18 D in children with the Bland-Altman analysis. This indicated an overestimation of hyperopia and underestimation of myopia in Spot retinoscopy. The difference between the adults and children was clinically not significant. The mean difference of Spot retinoscopy from the cycloplegic retinoscopy was  $-0.3$  D, indicating underestimated

hyperopia and overestimated myopia. Again the difference was not clinically significant. This difference is possibly explained by the amount of accommodation a child exerts during refraction without cycloplegia. This is validated by the fact that the difference was 0.49 D in postcycloplegic Spot and traditional retinoscopy. The mean difference of Spot versus dry retinoscopy in adults and the Spot versus cycloretinoscopy in children for J180 and J45 was less; this indicates a better performance of Spot screener in detection of cylinder and confirms with another other study.<sup>18</sup>

We also detected that the cycloplegic retinoscopy, considered the gold standard in children, was closer to the Spot photoscreener refraction in undilated eyes. Our findings confirm the reports from other studies either using the Spot<sup>17</sup> or other photoscreeners.<sup>20–25</sup> We documented a differential response in adults (performed better in eyes with hyperopia) and in children (performed better eyes with myopia) using the Spot photoscreening device. The photoscreener retinoscopy was within +1 D of dry retinoscopy in 81.5% adults and within +1 D of cycloplegic retinoscopy in 86.4% children. The relationship between Spot screener and dry retinoscopy was comparatively poor in adults even in the cubic model fitting (adults:  $R^2 = 0.50$ ; children:  $R^2 = 0.92$ ; Table 3). Additionally, the dry retinoscopy had better fitting ( $R^2 = 0.92$ ) than cycloretinoscopy ( $R^2 = 0.87$ ) in children with the Spot screener, which is similar to<sup>18</sup> or better than other studies.<sup>26</sup> In general, Spot screener performed better in eyes with myopia than in eyes with hyperopia in logistic regression.

The sensitivity and specificity of Spot in detection of amblyopia risk factors were high and were higher in comparison to other studies using the same photoscreener (Table 6).<sup>12,18,19</sup> The different referral criteria and different age group taken in different studies could explain a part of it. The weakness of the study lies in the fact that we used only one type of photoscreener device and the sample size was small. Hence, our recommendation should be confined to the device we tested (in this case, Welch Allyn Spot Vision Screener). The small sample size did not permit detection of amblyopia risk factors. The strength of the study lies in the fact that the study recruited people in all age groups. The photoscreener refraction done both before and after cycloplegic dilatation in children helped further establish its accuracy and usefulness.

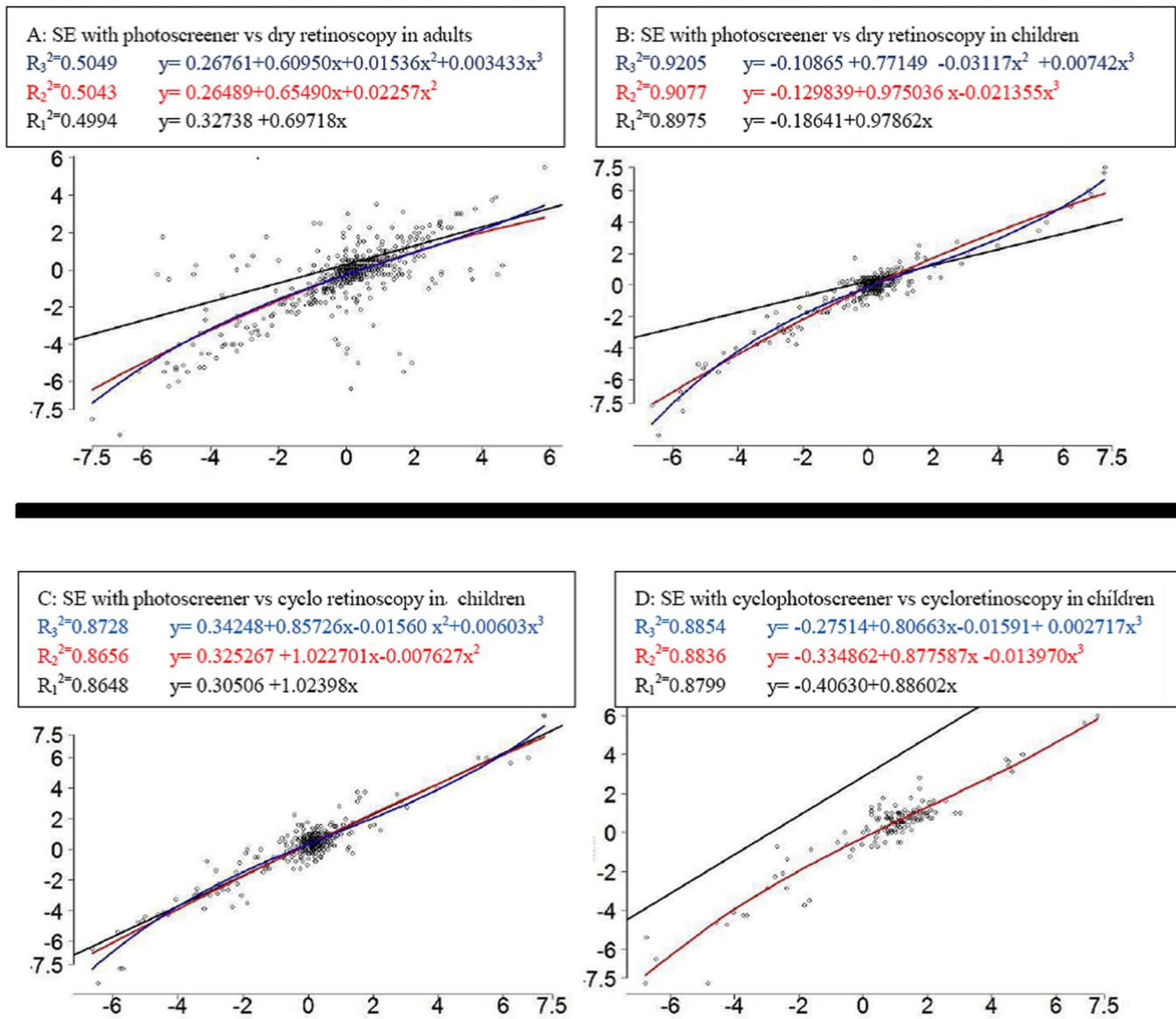


Figure 2. Curve estimation regression for quantitative relationship between results.

## Conclusion

The Welch Allyn Spot screener overestimated hyperopia and underestimates myopia in adults and

it underestimated hyperopia and overestimated myopia in children. It performed better in eyes with hyperopia in dry retinoscopy and in children with cycloplegic retinoscopy, and in general, it performed

Table 5. Sensitivity and Specificity of Spot Screener in Detection of Amblyopia Risk Factors in the Current Study as Per AAPOS Criteria

AAPOS Criteria	Hyperopia >3.5 D in Any Meridian	Myopia >3.0 D in Any Meridian	Astigmatism (> 1.5 D Within 10° of 90°/180°, >1.0 D in Oblique Axis)	Anisometropia > 1 D (Spherical or Cylindrical)	Strabismus > 8 PD
Sensitivity	100%	100%	87.50%	100.00%	100.00%
Specificity	100%	100%	96.66%	97.22%	94.44%

**Table 6.** Comparison of Various Studies Using Spot Screener

Photoscreener	Referral Criteria	Sensitivity	Specificity	Age Group
Our study (AAPOS criteria)	Hyperopia > 3.5 D, Myopia > 1.5 D, Astigmatism > 1.5 D or > 1.0 D oblique axis, Anisometropia > 1.5 D, strabismus > 8 PD	93.33%	96.96%	4–7 y
Garry et al. <sup>12</sup>		89%	71%	2–9 y
Mu Y et al. <sup>18</sup>	Hyperopia > 2.375 D, myopia > –2.00 D, astigmatism > 1.25 D, anisometropia > 1.125 D, strabismus > 12 PD	94.79%	85%	4–7 y
Peterseim et al. <sup>19</sup>	12–30 mo hyperopia > 4.5 D, myopia > 3.5 D, astigmatism > 2.0 D, anisometropia > 2.5 D. 31–48 mo hyperopia > 4.0 D, myopia > 3.0 D, astigmatism > 2.0 D, anisometropia > 2.0 D. > 48 mo hyperopia > 3.5 D, myopia > –1.5 D, astigmatism > 1.5 D, anisometropia > 1.5 D	87.7%	75.9%	1–18 y

better in eyes with myopia. Overall accuracy was higher in children than adults. Regression could predict refraction with 87% accuracy in children but not in adults. Spot screener's better performance in children is most likely related to the following three factors: (1) it is calibrated to take into account some accommodation, (2) children's pupils are larger than adults and the current technology requires a moderately dilated pupil, and (3) better media clarity in children. Vision testing is a better parameter in adults and so the Spot screener is not required.

We recognize that retinoscopy is a time-tested method. Cycloplegic refraction is the standard of care for refractive error correcting in children. The photorefractive system is useful in remote locations for providing eye care services in children who have no access or are unable to visit nearest eye care facility. We believe this will reduce refractive error and amblyopia burden to a great extent in children. It is not as useful in adults. We also recognize that photorefractive has a limited range and as such a

spectacles prescription should not be made without adequate subjective verification.

## Acknowledgments

Supported by grants from the Hyderabad Eye Research Foundation, Hyderabad.

Disclosure: **L. Panda**, None; **U. Barik**, None; **S. Nayak**, None; **B. Barik**, None; **G. Behera**, None; **R. Kekunnaya**, None; **T. Das**, None

## References

1. Bourne RRA, Flaxman SR, Braithwaite T, et al; for the Vision Loss Expert Group. Magnitude, temporal trends, and projections of the global prevalence of blindness and distance and near vision impairment: a systematic review and meta-analysis. *Lancet Glob Health*. 2017;5:e888–e897.



2. American Academy of Ophthalmology Pediatric Ophthalmology/Strabismus Panel: Wallace DK, Repka MX, Lee KA, et al. Amblyopia PPP - 2017. Available from: <https://www.aao.org/preferred-practice-pattern/amblyopia-ppp-2017>. Accessed August 9, 2017.
3. Lamoureux EL, Saw SM, Thumboo J, et al. The impact of corrected and uncorrected refractive error on visual functioning: the Singapore Malay Eye Study. *Invest Ophthalmol Vis Sci.* 2009;50:2614–2620.
4. Aghai G, Dibajnia P, Ashkesh E, et al. Behavior disorders in children with significant refractive errors. *J Curr Ophthalmol.* 2016;28:223–225.
5. Powell C, Hatt SR. Vision screening for amblyopia in childhood. *Cochrane Database Syst Rev.* 2009;(3) :CD005020.
6. Lagrèze WA. Vision screening in preschool children: do the data support universal screening? *Dtsch Arztebl Int.* 2010;107:495–459.
7. US Preventive Services Task Force, Grossman DC, Curry SJ, et al. Vision screening in children aged 6 months to 5 years: US Preventive Services Task Force Recommendation Statement. *JAMA.* 2017;318:836–844.
8. American Academy of Pediatrics; Section on Ophthalmology; American Association for Pediatric Ophthalmology And Strabismus; American Academy of Ophthalmology; American Association of Certified Orthoptists. Red reflex examination in neonates, infants, and children. *Pediatrics.* 2008;122:1401–1404.
9. Lee OL. Retinoscopy 101. 2015. Available from: <https://www.aao.org/young-ophthalmologists/yo-info/article/retinoscopy-101>. Accessed August 9, 2017.
10. Howland HC. Photorefraction of eyes: history and future prospects. *Optom Vis Sci.* 2009;86:603–606.
11. Spot™ Vision Screening by Welch Allyn. Available from: <http://www.spotvision screening.com>. Accessed August 25, 2014.
12. Garry GA, Donahue SP. Validation of Spot screening device for amblyopia risk factors. *J AAPOS.* 2014;18:476–480.
13. Silbert DI, Matta NS. Performance of the Spot vision screener for the detection of amblyopia risk factors in children. *J AAPOS.* 2014;18:169–172.
14. Alley CL. Preschool vision screening: update on guidelines and techniques. *Curr Opin Ophthalmol.* 2013;24:415–420.
15. Ottar WL, Scott WE, Holgado SI. Photoscreening for amblyogenic factors. *J Pediatr Ophthalmol Strabismus.* 1995;32:289–295.
16. Spot. Welch Allyn Vision Screener Model VS100. Available from: <https://www.welchallyn.com/content/dam/welchallyn/documents/sap-documents/LIT/80021/80021889LITPDF.pdf>. Accessed October 17, 2017.
17. Donahue SP, Arthur B, Neely DE, et al. Guidelines for automated preschool vision screening: a 10-year, evidence-based update. *J AAPOS.* 2013;17:4–8.
18. Mu Y, Bi H, Ekure E, et al. Performance of Spot photoscreener in detecting amblyopia risk factors in Chinese pre-school and school age children attending an eye clinic. *PLoS One.* 2016;11:e0149561.
19. Peterseim MM, Papa CE, Wilson ME, et al. The effectiveness of the Spot Vision Screener in detecting amblyopia risk factors. *J AAPOS.* 2014;18:539–542.
20. Dahlmann-Noor AH, Vivian AJ. A comparison of photorefractive and retinoscopy in children. *J AAPOS.* 2008; 12:104; author reply104–105.
21. Moghaddam AA, Kargozar A, Zarei-Ghanavati M, et al. Screening for amblyopia risk factors in pre-verbal children using the Plusoptix photoscreener: a cross-sectional population-based study. *Br J Ophthalmol.* 2012;96:83–6.
22. Rajavi Z, Parsafar H, Ramezani A, et al. Is noncycloplegic photorefractive applicable for screening refractive amblyopia risk factors? *J Ophthalmic Vis Res.* 2012;7:3–9.
23. Ayse YK, Onder U, Suheyla K. Accuracy of Plusoptix S04 in children and teens. *Can J Ophthalmol.* 2011;46:153–157.
24. Paff T, Oudesluys-Murphy AM, Wolterbeek R, et al. Screening for refractive errors in children: the plusoptix S08 and the Retinomax K-plus2 performed by a lay screener compared to cycloplegic retinoscopy. *J AAPOS.* 2010;14:478–483.
25. Mirzajani A, Heirani M, Jafarzadehpur E, et al. A comparison of the Plusoptix S08 photorefractor to retinoscopy and cycloretinoscopy. *Clin Exp Optom.* 2013;96:394–399
26. Yan XR, Jiao WZ, Li ZW, et al. Performance of the Plusoptix A09 photoscreener in detecting amblyopia risk factors in Chinese children attending an eye clinic. *PLoS One.* 2015;10:e0126052.