



OPEN ACCESS

CASE REPORT

Management of acute lower extremity deep venous thrombosis in a patient with duplicated inferior vena cava and contraindication to anticoagulation: case and review of the literature

Shrinil Patel, Anmol Cheema, Tejas Karawadia, Michael Carson

Department of Medicine, Jersey Shore University Medical Center, Neptune City, New Jersey, USA

Correspondence to
Dr Tejas Karawadia,
tejas17k@gmail.com

Accepted 8 May 2018

SUMMARY

Duplication of the inferior vena cava (DIVC) is an uncommon embryological anatomic phenomenon. We report a 63-year-old woman with extensive right leg deep vein thrombosis who required an IVC filter due to contraindications for anticoagulation, but was found to have DIVC which required the placement of two IVC filters with good result. This report will review and summarise past reports of DIVC management to provide a guide for future clinicians, and review the embryological development, diagnosis and IVC filter placement options as they are based on the type of anatomic malformation encountered.

BACKGROUND

DIVC is an uncommon phenomenon with an incidence of 0.2%–3%^{1 2} and only 14 prior cases were identified in the literature for DIVC and caval interruption. Future clinicians and patients can benefit from publishing the management decisions that were made in real time, combined with a summary of the literature.

CASE PRESENTATION

A 63-year-old woman presented to the emergency department from an assisted living facility with shortness of breath, subjective fevers and cough productive of white sputum. Her medical history included chronic obstructive pulmonary disease

(COPD) and tracheostomy placed 4 years prior to admission related to ventilator-dependent respiratory failure from severe COPD exacerbation, chronic kidney disease stage IV, type 2 diabetes mellitus, hypertension and obstructive sleep apnoea. Her examination was notable for respiratory rate (RR) of 24/min, oral temperature 99.2F (37.3C), pulse 90/min, blood pressure 138/68 mm Hg and room air pulse oximetry (O₂Sat) 94%. Lung examination revealed bilateral expiratory wheezing, and her extremities were without oedema or tenderness. Laboratory evaluation revealed normal electrolytes, creatinine 2.2 mg/dL (194 μmol/L) (baseline 2.2–2.4 mg/dL (194–212 μmol/L)), white blood count 16 400/μL (4000–12 000/μL) and right lower lobe infiltrate on chest radiograph. She was admitted with a diagnosis of COPD exacerbation, diagnosed with healthcare-associated pneumonia, and treated with nebulised albuterol, intravenous corticosteroids and intravenous levofloxacin. On hospital day 3, her room air O₂Sat dropped to 80%, she was tachypnoeic with RR 32/min and repeat chest X-ray was unchanged. Bronchoscopy done on the same day found a mucus plug with small amount of blood which was thought to be due to traumatic suctioning. On hospital day 5, her O₂Sat dropped and urgent bronchoscopy again found mucus plugging. Her O₂Sat improved significantly when the plug was cleared. Both times the drop in oxygen levels improved after the clearance of the mucus plugs, supporting the clinical diagnosis of pneumonia, so the clinical team did not suspect an alternate diagnosis, such as pulmonary embolism, at that point. On hospital day 7, she complained of right calf tenderness and diagnostic studies were obtained.

INVESTIGATIONS

Hospital day 1: chest radiograph: right lower lobe infiltrate.

Hospital day 7: venous Doppler/ultrasound on day 7 revealed extensive deep vein thrombosis (DVT) involving right femoral, posterior tibial and peroneal veins with the patent popliteal vein.

TREATMENT

On hospital day 7, the acute DVT was treated with a high-intensity unfractionated heparin drip,

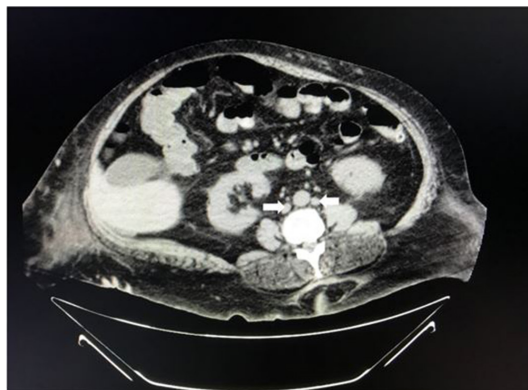


Figure 1 CT scan of the abdomen/pelvis showing duplicated IVC (white arrows). IVC, inferior vena cava.



To cite: Patel S, Cheema A, Karawadia T, et al. *BMJ Case Rep* Published Online First: [please include Day Month Year]. doi:10.1136/bcr-2017-222974

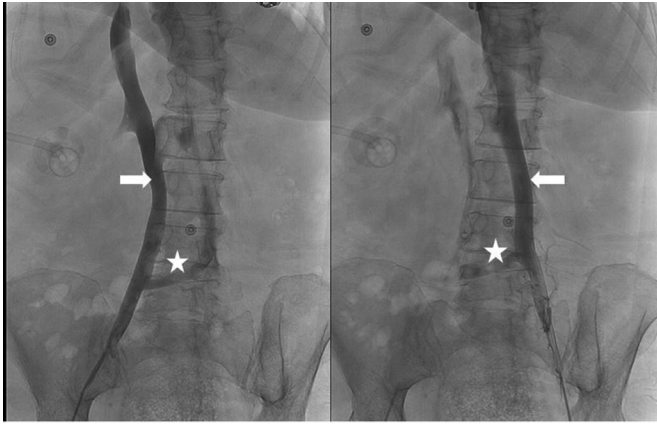


Figure 2 Venogram depicting patient's duplicated IVC anatomy. Image on the left shows right external iliac vein extending into the right caval system (arrow). Image on right shows patient's left external iliac vein (arrow) and extending into left caval system (arrow). Inter-iliac communicating vein extending (star). IVC, inferior vena cava.

but 12 hours later she developed copious bloody secretions on suctioning of the tracheostomy. The amount of blood was extensive, therefore anticoagulation was stopped and interventional radiology was consulted for placement of an IVC filter. Day 9, a mapping venogram was performed and she was noted to have DIVC with continuation of left IVC into the azygos and hemiazygos system (figures 1 and 2). On day 10, she underwent placement of two infrarenal IVC filters, one in each IVC (figure 3).

OUTCOME AND FOLLOW-UP

On hospital day 12, her respiratory status was stable on 28% oxygen by tracheostomy collar and she was transferred back to her assisted living facility. In the setting of a provoked DVT, guidelines recommend 3 months of anticoagulant treatment, and in patients who had an IVC filter placed, to consider a full 3 months when the contraindication to anticoagulation has been resolved. This decision was deferred to her outpatient physician, and they were advised to have her evaluated for IVC filter removal in 3 months.

DISCUSSION

The embryological formation of the IVC involves the anastomosing of pairs of primitive veins. The IVC consists of four segments: the suprarenal, hepatic, renal and infrarenal. The primitive veins that form the final IVC are the posterior cardinal, subcardinal and supracardinal. Posterior cardinal veins form the distal IVC and common iliac veins, right subcardinal veins form the suprarenal portion, the renal segment of the IVC develops from the right suprasubcardinal and postsubcardinal anastomoses and the right supracardinal vein forms infrarenal IVC.²⁻⁶ The alteration of any of these steps can result in IVC anatomic abnormalities. DIVC results from persistence of the left supracardinal vein and can have multiple anatomic variations such as left IVC, retrocaval IVC, IVC with drainage through the azygos vein and IVC interruption with continuation through the azygos vein.⁷⁻¹⁰ DIVC is clinically silent and therefore diagnosis is often incidental.

If suspected or detected, multidetector CT is less costly and less invasive than a conventional angiography, fast, easily applicable and reliable in terms of identification of thoracoabdominal vascular structures. Two-dimensional and three-dimensional

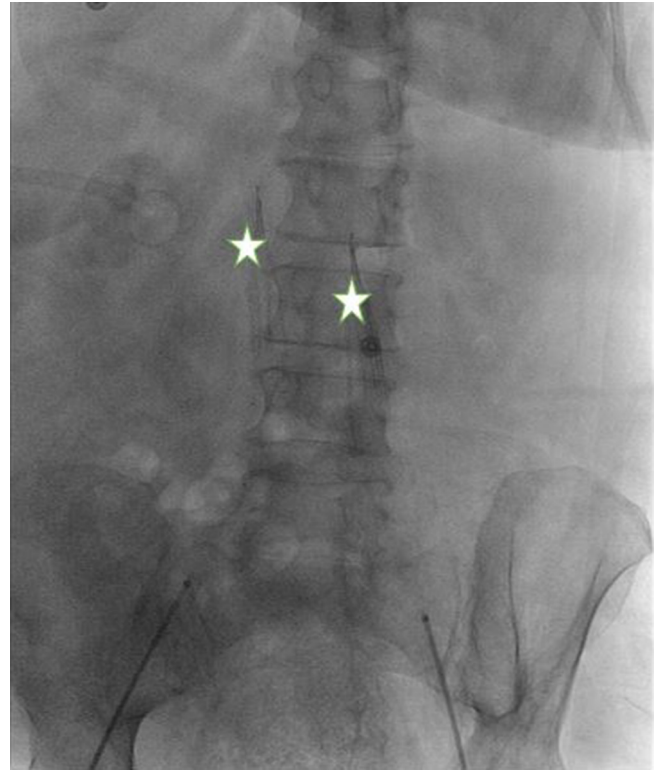


Figure 3 Placement of dual IVC filters (stars). IVC, inferior vena cava.

images can aid in the visualisation and understanding of complex vascular malformations of the IVC.¹¹

A PubMed search with terms 'Duplicated Inferior Vena Cava' and 'Inferior Vena Cava filter' returned 14 cases utilising three options for caval interruption: (1) placement of bilateral IVC filters (10 cases); (2) filter insertion in large right IVC and steel coil embolisation of the smaller IVC (2 cases); (3) filter insertion in large right IVC and catheter-directed thrombolysis¹²⁻²⁴ (see table 1).

In addition to the three treatment options listed, the other potential intervention for DIVC include placement of a single suprarenal IVC filter post the confluence of DIVC. However, none of the cases reported used that intervention.

In our case, the indication for the IVC filter over anticoagulation was tracheal bleeding secondary to traumatic suction. IVC filters are typically deployed below the renal veins using the femoral or jugular approach, both of which can also be used to retrieve a recoverable filter. Venography is performed prior to filter placement to determine the approach, and in this case detected the anomaly allowing the clinical team to develop the proper plan for our patient (1). As our patient had a continuation of the left IVC into the azygos and hemiazygos system, two infrarenal IVC filters were placed, one each IVC. The reasons were the size of the IVCs and the interventional radiologist determined that technically this would offer the highest chance of successful filter deployment while avoiding the longer procedure time, fluoroscopy time and complications associated with coil embolisation. Our management was similar to 11/14 previously reported cases that deployed two IVC filters (table 1), therefore, this summary offers information for future clinicians regarding management of this uncommon finding.

Table 1 Summary of past cases reporting management of dual IVC variants in patients with acute DVT and/or PE

Reference	Year	Presentation	Method of caval interruption	Anatomy
12	2013	DVT	Dual IVC filter placement	L IVC originated from normal iliac confluence and drains into the left renal vein
13	2011	DVT and PE	Dual IVC filter placement	L IVC originated from the L common iliac vein with the interiliac vein communicating with R IVC
13	2011	DVT and PE	Dual IVC filter placement	L IVC originated from the L common iliac vein with the interiliac vein communicating with R IVC
14	2012	DVT	Dual IVC filter placement	L IVC originated from the L common iliac vein with no communication with R IVC, draining into the L renal vein
15	2010	DVT	Dual IVC filter placement	L IVC and L renal vein joined R IVC below the superior mesenteric vein
16	2009	DVT and PE	Dual IVC filter placement	L IVC originated from the L common iliac vein with no communication with R IVC, draining into the L renal vein
17	2006	DVT	Dual IVC filter placement	L IVC originated from the L common iliac vein with the interiliac vein communicating with R IVC
18	2005	DVT	R IVC filter and L IVC coil embolisation	L IVC and L renal vein join R IVC below the superior mesenteric vein
19	2001	DVT and PE	Dual IVC filter placement	L IVC originated from the R common iliac vein and receives the L common iliac vein. No interiliac vein communication with R IVC. L IVC drains in the L renal vein and two IVCs join
20	1992	DVT	Dual IVC filter placement	L IVC originated from the L common iliac vein and continued as the hemiazygos vein. R IVC originating from the R common iliac vein and continued as the azygos vein. No interiliac communication
21	1992	DVT	R IVC filter and L IVC steel coil embolisation	L IVC and L renal vein joined R IVC below the superior mesenteric vein
22	1988	DVT	Dual IVC filter placement	L IVC and L renal vein joined R IVC below the superior mesenteric vein
23	2014	DVT and PE	R IVC filter placement and catheter-directed thrombolysis	L IVC and L renal vein joined R IVC below the superior mesenteric vein
24	2011	Caval interruption for prophylaxis post-trauma	Dual IVC filter placement	Not mentioned

DVT, deep venous thrombosis; L, left; LIVC, left inferior vena cava; PE, pulmonary embolism; R, right; RIVC, right inferior vena cava.

Learning points

- Duplication inferior vena cava (DIVC) is due to an uncommon embryologic anatomic phenomenon that can have various clinical implications.
- DIVC is often diagnosed incidentally during venogram prior to IVC filter placement, but when suspected multidetector CT can be useful.

Contributors SP: contributed in collecting radiology images, getting consent and final review of the article along with writing of the article. AC: contributed in writing the article and collecting references for the discussion of the article. TK: contributed in writing and editing this article. MC: contributed in editing the article and selection of appropriate radiology images.

Funding The authors have not declared a specific grant for this research from any funding agency in the public, commercial or not-for-profit sectors.

Competing interests None declared.

Patient consent Obtained.

Provenance and peer review Not commissioned; externally peer reviewed.

Open Access This is an Open Access article distributed in accordance with the Creative Commons Attribution Non Commercial (CC BY-NC 4.0) license, which permits others to distribute, remix, adapt, build upon this work non-commercially, and license their derivative works on different terms, provided the original work is properly cited and the use is non-commercial. See: <http://creativecommons.org/licenses/by-nc/4.0/>

© BMJ Publishing Group Ltd (unless otherwise stated in the text of the article) 2018. All rights reserved. No commercial use is permitted unless otherwise expressly granted.

REFERENCES

- Masood J, Barua JM. Images in clinical medicine. Duplication of the inferior vena cava. *N Engl J Med* 2007;356:e17.
- Bass JE, Redwine MD, Kramer LA, et al. Spectrum of congenital anomalies of the inferior vena cava: cross-sectional imaging findings. *Radiographics* 2000;20:639–52.
- Lucas MF. A case of double inferior vena cava. *J Anat* 1916;51(Pt 1):69–70.
- Banerjee A, Maharana S, Kumar IA, et al. Duplication of the inferior vena cava—report of a rare congenital variation. *Int J Anat Var* 2012;5:141–3.
- Natsis K, Apostolidis S, Noussios G, et al. Duplication of the inferior vena cava: anatomy, embryology and classification proposal. *Anat Sci Int* 2010;85:56–60.
- Chen H, Emura S, Nagasaki S, et al. Double inferior vena cava with interiliac vein: a case report and literature review. *Okajimas Folia Anat Jpn* 2012;88:147–51.
- Babaian RJ, Johnson DE. Major venous anomalies complicating retroperitoneal surgery. *South Med J* 1979;72:1254–8.
- Mathews R, Smith PA, Fishman EK, et al. Anomalies of the inferior vena cava and renal veins: embryologic and surgical considerations. *Urology* 1999;53:873–80.
- Senecail B, Lefevre C, Person H, et al. Radiologic anatomy of duplication of the inferior vena cava: a trap in abdominal imaging. A report of 8 cases. *Surg Radiol Anat* 1987;9:151–7.
- Xue HG, Yang CY, Asakawa M, et al. Duplication of the inferior vena cava associated with other variations. *Anat Sci Int* 2007;82:121–5.
- Coco D, Cecchini S, Leanza S, et al. Inferior vena cava duplication: incidental case in a young woman. *Case Rep Radiol* 2016;2016:1–4.
- Pineda D, Moudjill N, Eisenberg J, et al. An interesting anatomic variant of inferior vena cava duplication: case report and review of the literature. *Vascular* 2013;21:163–7.
- Malgor RD, Oropallo A, Wood E, et al. Filter placement for duplicated cava. *Vasc Endovascular Surg* 2011;45:269–73.
- Leong S, Oisin F, Barry JE, et al. Bilateral inferior vena cava filter insertion in a patient with duplication of the infrarenal vena cava. *Ir J Med Sci* 2012;181:389–91.
- Cheng D, Zangan SM. Duplication of the inferior vena cava in a patient presenting for IVC filter placement. *J Vasc Access* 2010;11:162–4.
- Moubarak G, Schleich JM, Daubert JC. Long-term efficacy of two vena cava filter implants for congenital duplicated inferior vena cava. *Arch Cardiovasc Dis* 2009;102:77–8.
- Sartori MT, Zampieri P, Andres AL, et al. Double vena cava filter insertion in congenital duplicated inferior vena cava: a case report and literature review. *Haematologica* 2006;91(6 Suppl):ECR30.
- Anne N, Pallapothu R, Holmes R, et al. Inferior vena cava duplication and deep venous thrombosis: case report and review of literature. *Ann Vasc Surg* 2005;19:740–3.
- Spivack S, Kalker E, Samuels D, et al. Filter placement in duplicated inferior vena cava. *Isr Med Assoc J* 2001;3:459–60.
- Soltes GD, Fisher RG, Whigham CJ. Placement of dual bird's nest filters in an unusual case of duplicated inferior vena cava. *J Vasc Interv Radiol* 1992;3:709–11.

- 21 Smith DC, Kohne RE, Taylor FC. Steel coil embolization supplementing filter placement in a patient with a duplicated inferior vena cava. *J Vasc Interv Radiol* 1992;3:577–80.
- 22 Rohrer MJ, Cutler BS. Placement of two Greenfield filters in a duplicated vena cava. *Surgery* 1988;104:572–4.
- 23 Wang X, Chen Z, Cai Q. Catheter-directed thrombolysis for double inferior vena cava with deep venous thrombosis: A case report and literature review. *Phlebology* 2014;29:480–3.
- 24 Rogers FB, Rogers A, Miller JA, *et al.* Double vena cava requiring filtration. *J Trauma* 2011;71:1922.

Copyright 2018 BMJ Publishing Group. All rights reserved. For permission to reuse any of this content visit <http://group.bmj.com/group/rights-licensing/permissions>.

BMJ Case Report Fellows may re-use this article for personal use and teaching without any further permission.

Become a Fellow of BMJ Case Reports today and you can:

- ▶ Submit as many cases as you like
- ▶ Enjoy fast sympathetic peer review and rapid publication of accepted articles
- ▶ Access all the published articles
- ▶ Re-use any of the published material for personal use and teaching without further permission

For information on Institutional Fellowships contact consortiasales@bmjgroup.com

Visit casereports.bmj.com for more articles like this and to become a Fellow