



Bartonella henselae infection in diverse clinical conditions in a tertiary care hospital in north India

Rama Chaudhry¹, Prathyusha Kokkayil⁶, Arnab Ghosh⁵, Tej Bahadur¹, Kamala Kant¹, Tanu Sagar¹, Sunil Kumar Kabra², Rakesh Lodha², Aparajit Ballav Dey³ & Vimala Menon⁴

Departments of ¹Microbiology, ²Paediatrics, ³Geriatric Medicine & ⁴Ophthalmology, All India Institute of Medical Sciences, ⁵Department of Microbiology, Chacha Nehru Bal Chikitsalaya, New Delhi & ⁶Department of Microbiology, Government Medical College, Palakkad, India

Received December 2, 2016

Background & objectives: *Bartonella henselae* causes infections which closely resemble febrile illness and chronic diseases such as tuberculosis and haematological malignancies. There are not many studies on *Bartonella* infections from India. The present study was undertaken to diagnose *B. henselae* infection in diverse clinical conditions in a tertiary care hospital in north India.

Methods: A total of 145 patients including those with fever and lymphadenopathy, infective endocarditis and neuroretinitis were enrolled in the study. Whole blood, serum and lymph node aspirate and valvular vegetations if available, were obtained. Samples were plated on chocolate agar and brain-heart infusion agar containing five per cent fresh rabbit blood and were incubated at 35°C for at least four weeks in five per cent CO₂ with high humidity. Immunofluorescent antibody assay (IFA) was done for the detection of IgM antibodies in the serum using a commercial kit. Whole blood was used to perform polymerase chain reaction (PCR) for the citrate synthase gene (*gltA*).

Results: IFA was positive in 11 of 140 (7.85%) patients and PCR was positive in 3 of 140 (2.14%) patients. Culture was negative in all the cases. A higher incidence of *Bartonella* infection was seen in patients with fever and lymphadenopathy (n=30), seven of whom were children. In ophthalmological conditions, four cases were IFA positive.

Interpretation & conclusions: The present study shows that the threat of *Bartonella* infection is a reality in India. It is also an important treatable cause of fever and lymphadenopathy in children. Serology and PCR are useful tests for its diagnosis. Clinicians should consider *Bartonella* infection in the differential diagnosis of febrile illnesses and chronic diseases.

Key words *Bartonella* spp. - citrate synthase gene - diagnostics methods - fever - lymphadenopathy - pyrexia of unknown origin

Bartonellosis is a zoonotic disease caused by bacterial genus *Bartonella*, which is virtually ubiquitous among mammals. There are 45 species described so far

in the *Bartonella* genus, with *Bartonella henselae*, *B. bacilliformis*, *B. quintana* and *B. elizabethae* accounting for the majority of human cases¹. *Bartonella* spp.

infects closely related mammal species as its reservoir host, e.g. *B. bacilliformis* and *B. quintana* in humans, *B. henselae* in cats and dogs and *B. elizabethae* in rats. It establishes an intraerythrocytic and typically asymptomatic bacteraemia, although infections in incidental hosts may evoke discernible disease^{2,3}. This long-lasting erythrocytic bacteraemia in due course leads to efficient transmission of the intraerythrocytic pathogen to other susceptible hosts, which is transmitted by blood-sucking arthropods such as body lice (*B. quintana* in body lice)⁴, fleas (*B. henselae* in cat fleas *Ctenocephalides felis*)⁴, sandflies (*B. bacilliformis* in *Lutzomyia*)⁴ and new potential vectors such as ixodid ticks for transmitting *B. henselae*⁵. *Bartonella* spp. are thought to multiply in the digestive tract of the vector and their transmission occurs by animal scratches or a bite/faeces of arthropods².

B. henselae formerly known as *Rochalimæa henselae* was first discovered from the patient of cat scratch disease (CSD). Several genotypes have been identified so far, with two main genotypes designated Houston-1 (Type I) and Marseille (previously BATF) (Type II)^{6,7}. Type 1 is a commonly isolated genotype in humans from Western Europe and Australia and it is considered to be more virulent⁷.

Infection with *B. henselae* shows myriad of clinical manifestation which is linked with immune status of the individuals. In immunocompetent individuals, it causes CSD which occurs mostly indirectly via contaminated flea faeces that are inoculated via a cat scratch. It affects all ages, but most commonly seen in <21 yr of age. It is a self-limiting infection characterized by lymphadenopathy, which may be accompanied by other unremarkable manifestations such as fever or fatigue. A few cases of meningoencephalitis, endocarditis and eye involvement (neuroretinitis), bacteraemia and neurological disorders have also been reported in immunocompetent individuals⁸. In immunocompromised individuals, *B. henselae* is known to be the agent of bacillary angiomatosis, peliosis hepatis, septicaemia, endocarditis, recurring fever and neurological disorders⁸.

Bartonella is Gram-negative fastidious bacteria having a peculiar and demanding nutritional requirement¹. These can be grown on heart infusion, trypticase soy, Brucella agar and Columbia agar supplemented with five per cent rabbit blood or five per cent haemoglobin sheep and take 2-6 wk or longer period of incubation for visible colonies to appear in

primary isolation. Due to difficulties with traditional culture methods for isolation, serologic testing for *Bartonella* infection, including immunofluorescent antibody assay (IFA) and ELISA, is the cornerstone for clinical diagnosis⁹.

Apart from serology, detection of specific DNA by conventional PCR, PCR-restriction fragment length polymorphism and real-time PCR with different gene targets have been described^{4,10}. This study was undertaken to diagnose *B. henselae* infection in patients with diverse clinical conditions in a tertiary care centre in India.

Material & Methods

The present study was conducted during 2012-2016 in the department of Microbiology, All India Institute of Medical Sciences, New Delhi, India. A total of 145 patients were enrolled in the study. This included patients admitted in paediatrics and medicine wards with fever and lymphadenopathy, patients with culture-negative endocarditis and patients with clinical features suggestive of neuroretinitis. Samples were sent to the laboratory for cases where *Bartonella* infection was suspected.

Ethical approval for the study was obtained from the institute ethics committee. Written informed consent was taken from all patients. Patients with fever and lymphadenopathy due to tuberculosis, haematological malignancies and other pyogenic infections were excluded from the study. Similarly, patients with infective endocarditis whose blood culture yielded bacteria or fungi were also excluded. Whole blood samples (5 ml) were collected from all patients enrolled in the study. Screening tests for syphilis, toxoplasma, tuberculosis and other routine tests were performed on samples received from ophthalmology. Lymph node biopsy/aspirate samples were obtained from patients with fever and lymphadenopathy, and valvular vegetation was collected from patients with infective endocarditis whenever available.

Isolation of *B. henselae* was done by conventional culture from whole blood, lymph node biopsy/aspirate and valvular vegetation. Samples were plated on fresh chocolate agar and brain-heart infusion agar containing five per cent fresh rabbit blood and were incubated at 35°C for at least four weeks in five per cent CO₂ with high humidity. *B. henselae* (ATCC 4982) strain served as positive control. Negative controls used were DNA extracted from ATCC strains of *Klebsiella pneumoniae*, *Citrobacter* sp. and *Proteus vulgaris*.

IFA was done for the detection of IgM antibodies from serum using a commercial kit (*B. henselae* IgM IFA kit, Vircell, Granada, Spain). For PCR, DNA was extracted from citrated blood, lymph node aspirates and valvular vegetations using QIAGEN DNA extraction kits (QIAGEN, Hilden, Germany) according to the manufacturer's instructions. PCR for *B. henselae* citrate synthase gene (*gltA*) was done according to earlier published protocols using the following primers¹¹:

Forward Primer: GGGGACCAGCTCATGGTGG

Reverse Primer: AATGCAAAAAGAACAGTAAACA

PCR analysis was performed with 50 µl of a PCR mixture which contained 1 U of Taq DNA polymerase, 25 pmol of each primer and 100 ng of target DNA. Amplification was performed under standard conditions in a thermal cycler with 30 cycles each of one minute at 94°C, two minutes at 55°C and three minutes at 72°C, followed by a terminal extension step of 10 min at 72°C. Electrophoresis of the amplified PCR products was carried out on 1.5 per cent agarose gel containing ethidium bromide and examined under ultraviolet transilluminator. The PCR products for *gltA* gene showed an amplicon size of 379 base pairs.

Results

Of the 145 patients enrolled, 140 samples were processed. In the remaining five patients, three samples were inadequate and in another two the blood samples were coagulated. There were 73 males and 67 females. The age of the patients ranged from 0 - >60 years; of which 52 were children (0-12 yr), 24 were between 12-18 yr, 28 were in 19-39 yr age group, 15 were in 31-40 yr, 12 were in 41-50 yr, seven were in 51-60 yr age group and two were above 60 years. Of the 140 patients, 30 had fever and lymphadenopathy. The duration of fever ranged from 1-3 months. Cervical lymph nodes were most commonly enlarged. A history of maculopapular skin rash was elicited in eight patients. Twenty two patients presented with culture-negative endocarditis. The remaining 80 patients had ophthalmological symptoms, with papillitis being more common in 26 (37.14%), retrobulbar neuritis in 17 (24.28%) and optic neuritis in 15 (21.42%). IFAs for IgM antibodies were positive in 11 (7.85%, n=140) patients (Table). PCR for citrate synthase gene was positive in three (2.14%, n=140) patients (Figure). Culture was negative in all the cases. Of the 11 IFA-positive cases, seven presented with fever and lymphadenopathy. Five of these were

Table. Clinical presentation and laboratory findings in the 11 immunofluorescent antibody assay (IFA)-positive patients

Age (yr)/sex	Presenting complaints	Provisional diagnosis	IFA	PCR	Exposure to animals
12/female	Fever of one month duration	PUO	Positive	Negative	Negative
18/female	Fever of three months duration, lymphadenopathy of left cervical region	PUO	Positive	Negative	Negative
12/male	Fever of three months duration, bilateral cervical lymphadenopathy, hepatosplenomegaly	PUO	Positive	Positive	Positive
9/male	Fever of one month duration, maculopapular rashes, lymphadenopathy of left cervical region	PUO	Positive	Positive	Positive
1.5/male	Fever of three months duration, maculopapular rashes, lymphadenopathy of left inguinal region	PUO	Positive	Negative	Positive
9/male	Fever of three months duration, lymphadenopathy of left cervical region	CSD	Positive	Positive	Negative
7/male	Fever of four months duration, bilateral cervical lymphadenopathy	Granulomatous disease	Positive	Negative	Negative
16/female	Decrease in vision both eyes preceded by fever	Neuroretinitis	Positive	Negative	Positive
4/female	Swelling of right eye with decrease in vision	Orbital cellulitis with neuroretinitis	Positive	Negative	Positive
40/female	Decrease in vision both eyes	Neuroretinitis	Positive	Negative	Positive
21/female	Swelling, redness in both eyes	Oculoglandular syndrome	Positive	Negative	Negative

PUO, pyrexia of unknown origin; CSD, cat scratch disease

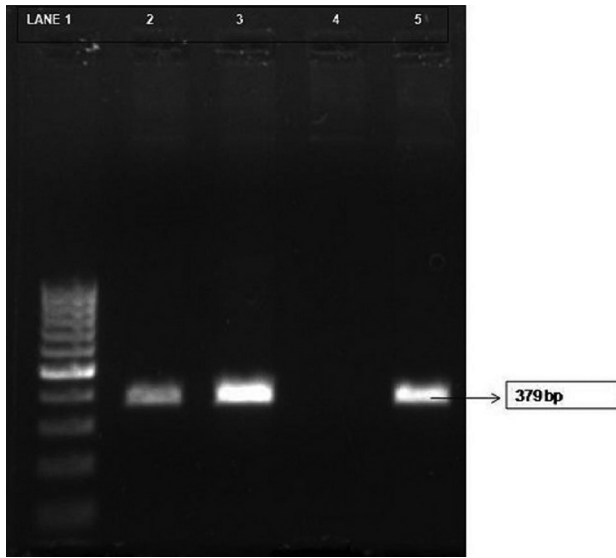


Figure. Polymerase chain reaction for *Bartonella henselae* citrate synthase gene (*gltA*). Lane 1, 100 bp DNA ladder; lane 2, clinical sample (laboratory no. 413) positive; lane 3, clinical sample (laboratory no. 738) positive; lane 4, negative control; lane 5, positive control (original image).

diagnosed as having pyrexia of unknown origin (PUO), one with CSD and one with granulomatous disease. Among the four IFA-positive ophthalmology cases, one was a case of Parinaud's oculoglandular syndrome and the rest showed symptoms of neuroretinitis. Of the 11 IFA-positive cases, seven were children and four of them had PUO. Six of the IFA-positive patients gave a history of exposure to cats.

Discussion

The vector-borne pathogens *Bartonella* species are now considered as worldwide emerging diseases in humans. They present with the multitude of clinical manifestations which mimic other endemic diseases. Fever with lymphadenopathy and prolonged fever are common clinical presentations in patients with *B. henselae* infection³. As clinical features of *B. henselae* infection closely resembles symptoms associated with other febrile illnesses and chronic diseases, it is often left undiagnosed or underreported¹². However, recognition of this infection is increasing worldwide and reports indicate its emergence even in developing and resource-limited countries. A study from Namibia by Noden *et al*¹² showed the presence of *B. henselae* in 2.9 per cent of its study population by detecting IgG antibodies using IFA. The presence of IgG antibodies indicates epidemiological prevalence of *Bartonella* infection although it may not detect the recent infection.

Serological testing is at present the most commonly utilized means of clinically diagnosing infection with *Bartonella* spp., largely on account of accessibility and practicality. Of the 140 patients, 7.85 per cent showed serological evidence of *B. henselae* infection as confirmed by IFA. Among the various serological tests available for the diagnosis of *B. henselae* infection, IFA is the most commonly used method¹³. The duration of detection of IgM antibodies is less than three months; hence, a positive IgM indicates an acute disease³. However, the short duration and undetectable level of IgM antibodies and the absence of antibodies in bacteraemic phase make them infrequently discovered on serology. Hence, negative results do not necessarily exclude disease. Antigenic variability between the two *B. henselae* serotypes may also explain the poor antibody response¹³. Commercial kits use only *B. henselae* strain Houston-1 grown in cell culture as the antigen. Antibodies directed against the *B. henselae* strain Marseille may remain undetected¹³. The IFA developed by the Centers for Disease Control and Prevention, Atlanta, Georgia, reported sensitivities of 83-88 per cent and specificities of 94-98 per cent¹⁴.

PCR-derived assays are helpful in rapid detection and identification of the bacteria directly from clinical samples. In our study, PCR for citrate synthase gene (*gltA*) picked up three positive cases. The *gltA* coding sequence in *B. henselae* is 1293 nucleotides in length and encodes a protein which has 431 amino acids. Citrate synthase gene (*gltA*) encodes for citrate synthase, which is the first enzyme of the tricarboxylic acid cycle and a key regulator of intracellular ATP production in both prokaryotic and eukaryotic cells. The nucleic acid sequence of the *gltA* gene has been determined for a number of bacteria, including *B. henselae*. The use of *gltA* comparisons to estimate divergence among closely related species was first reported by Regnery *et al*¹⁵. The PCR analysis was performed under stringent conditions, and earlier studies have proven that the protocol followed ensured no amplification of other members of alpha proteobacterium¹⁶. Failure to pick up more positive cases could be attributed to prior antibiotic use and the presence of inhibitors in the sample. False-negative results are also more likely to occur when samples contain less number of the bacteria¹⁷. It is well known that PCR for *B. henselae* has excellent specificity, but it lacks in sensitivity, which ranges from 43 to 76 per cent³.

B. henselae is a fastidious, slow-growing, intracellular organism. Its culture needs are characterized

by complex nutritional requirements and prolonged incubation times¹⁷. Hence, culture of *Bartonella* species is difficult, requiring a 2-6 wk incubation for primary isolation³. In our study, all samples were culture negative. Isolation of the organisms from clinical samples is difficult because most of the patients had the history of prior antibiotic use. Moreover, Anderson and Neuman¹⁸ have reported that if patients lack systemic disease, isolation becomes unsuccessful. Isolation of bacteria from lymph node culture also offers poor yield, because lymphadenopathy is thought to be due to an aggravated immune response rather than the bacterial direct invasion and proliferation³. Novel culture media such as the alpha proteobacterium growth medium and techniques such as shell vial culture have improved the isolation rates of the organism^{19,20}.

A higher incidence of *Bartonella* infection in our study was seen in patients with fever and lymphadenopathy. *B. henselae* infection is a common cause of lymphadenopathy in young patients³. Safont *et al*²¹ found that *B. henselae* and *Mycobacterium avium* infection occurs mostly in young patients, whereas patients with lymphadenopathy due to *M. tuberculosis* are significantly older. Asano *et al*²² also reported higher rates of *B. henselae* infection in children with cervical lymphadenopathy as compared to adults. Koehler *et al*²³ reported evidence of *Bartonella* infection in 18 per cent of patients with prolonged fever. Of which, three per cent of either *B. henselae* or *B. quintana* was isolated from specimens of blood, tissue or both or had DNA detected in tissue. Mazur-Melewska *et al*²⁴ identified *B. henselae* as the third leading infectious cause of PUO, after Epstein-Barr virus infection and osteomyelitis.

Among patients with ophthalmological findings, 4.9 per cent had *B. henselae* infection. One patient had Parinaud's oculoglandular syndrome and presented with eye redness, foreign body sensation in the eye, cervical lymphadenopathy and fever. *B. henselae* is the known causative agent for this syndrome and the route of infection is through direct conjunctival inoculation²⁵. The other patients had a sudden painless loss of vision with swelling of the optic disc and stellate macular exudates characteristic of neuroretinitis. This is the most common posterior segment ocular complication of *Bartonella* infection. Chaudhry *et al*²⁶ reported isolation of *B. henselae* in four of 29 patients suspected of optic neuritis. Apart from neuroretinitis, *B. henselae* has been reported from a 45 yr old patient diagnosed with acute endogenous endophthalmitis without any evidence of

retinitis as well as in choroidal neovascularization, uveitis and optic disk oedema²⁷⁻³⁰. Hence, clinicians should think of infection with *B. henselae* not only in neuroretinitis but also in endophthalmitis and other ophthalmology conditions.

None of the 22 endocarditis patients were positive for *B. henselae* in our study. Negative results could be due to prior antibiotics intake or due to delayed collection of samples in the clinical course. In *Bartonella* endocarditis, amplification of *Bartonella* DNA from valvular tissue by PCR has been shown to have higher sensitivity and specificity, ranging from 72 to 98 per cent¹. Okaro *et al*¹ had suggested a positive titre of >16 for IgM and >64 for IgG, with a 4-fold rise in titre for IgG between acute-phase serum and convalescent-phase serum samples (collected at least two weeks apart) were preferred for definitive diagnosis.

As no pathognomonic clinical features is attributed to *Bartonella* infections, laboratory testing is required for a definitive diagnosis of *Bartonella* infection. In this study, serology was found to be a useful test for diagnosing *B. henselae* infection in patients with suggestive clinical features. PCR was able to confirm the same. However, neither clinical symptoms nor tests such as serology nor PCR alone are satisfactory for diagnosis of *B. henselae* infection.

Since IgG IFA could not be performed due to financial constraints in our study, we might have missed some more positive cases which would be a possible limitation of the present study along with the low sample size.

In conclusion, our study depicts the presence of *Bartonella* infection in 7.85 per cent patients with diverse clinical conditions studied by IFA. These might be just the tip of the iceberg. Our study underscores the need for further screening of the susceptible human population. Moreover, screening procedures should also include likely reservoirs of infection such as cats as well as unlikely reservoirs such as birds.

Acknowledgment

Authors acknowledge Dr Rakesh Yadav for providing endocarditis samples.

Financial support & sponsorship: Authors thank the All India Institute of Medical Sciences, New Delhi, India, for providing intramural grant for conducting this study.

Conflicts of Interest: None.

References

- Okaro U, Addisu A, Casanas B, Anderson B. *Bartonella* species, an emerging cause of blood-culture-negative endocarditis. *Clin Microbiol Rev* 2017; 30 : 709-46.
- Pulliaainen AT, Dehio C. Persistence of *Bartonella* spp. stealth pathogens: From subclinical infections to vasoproliferative tumor formation. *FEMS Microbiol Rev* 2012; 36 : 563-99.
- Florin TA, Zaoutis TE, Zaoutis LB. Beyond cat scratch disease: Widening spectrum of *Bartonella henselae* infection. *Pediatrics* 2008; 121 : e1413-25.
- Breitschwerdt EB. Bartonellosis: One health perspectives for an emerging infectious disease. *ILAR J* 2014; 55 : 46-58.
- Cotté V, Bonnet S, Le Rhun D, Le Naour E, Chauvin A, Boulouis HJ, et al. Transmission of *Bartonella henselae* by *Ixodes ricinus*. *Emerg Infect Dis* 2008; 14 : 1074-80.
- Chomel BB, Boulouis HJ, Breitschwerdt EB. Cat scratch disease and other zoonotic *Bartonella* infections. *J Am Vet Med Assoc* 2004; 224 : 1270-9.
- Boulouis HJ, Chang CC, Henn JB, Kasten RW, Chomel BB. Factors associated with the rapid emergence of zoonotic *Bartonella* infections. *Vet Res* 2005; 36 : 383-410.
- Klotz SA, Ianas V, Elliott SP. Cat-scratch disease. *Am Fam Physician* 2011; 83 : 152-5.
- Hoey JG, Valois-Cruz F, Goldenberg H, Voskoboinik Y, Piffner J, Tilton RC, et al. Development of an immunoglobulin M capture-based enzyme-linked immunosorbent assay for diagnosis of acute infections with *Bartonella henselae*. *Clin Vaccine Immunol* 2009; 16 : 282-4.
- Litwin CM, Anderson B, Tsohis R, Rasley A. The *Bartonellaceae*, *Brucellaceae*, and *Francisellaceae*. In: Detrick B, Schmitz JL, Hamilton RG, editors. *Manual of Molecular and Clinical Laboratory Immunology*. 8th ed. Washington: ASM Press; 2016. p. 473-81.
- Avidor B, Kletter Y, Abulafia S, Golan Y, Ephros M, Giladi M, et al. Molecular diagnosis of cat scratch disease: A two-step approach. *J Clin Microbiol* 1997; 35 : 1924-30.
- Noden BH, Tshavuka FI, van der Colf BE, Chipare I, Wilkinson R. Exposure and risk factors to coxiella burnetii, spotted fever group and typhus group *Rickettsiae*, and *Bartonella henselae* among volunteer blood donors in Namibia. *PLoS One* 2014; 9 : e108674.
- Maurin M, Rolain JM, Raoult D. Comparison of in-house and commercial slides for detection by immunofluorescence of immunoglobulins G and M against *Bartonella henselae* and *Bartonella quintana*. *Clin Diagn Lab Immunol* 2002; 9 : 1004-9.
- Opavsky MA. Cat scratch disease: The story continues. *Can J Infect Dis* 1997; 8 : 43-9.
- Regnery RL, Spruill CL, Plikaytis BD. Genotypic identification of rickettsiae and estimation of intraspecies sequence divergence for portions of two rickettsial genes. *J Bacteriol* 1991; 173 : 1576-89.
- Diddi K, Chaudhry R, Sharma N, Dhawan B. Strategy for identification & characterization of *Bartonella henselae* with conventional & molecular methods. *Indian J Med Res* 2013; 137 : 380-7.
- Qian X, Jin L, Hayden RT, Macon WR, Lloyd RV. Diagnosis of cat scratch disease with *Bartonella henselae* infection in formalin-fixed paraffin-embedded tissues by two different PCR assays. *Diagn Mol Pathol* 2005; 14 : 146-51.
- Anderson BE, Neuman MA. *Bartonella* spp. as emerging human pathogens. *Clin Microbiol Rev* 1997; 10 : 203-19.
- Cadenas MB, Maggi RG, Diniz PP, Breitschwerdt KT, Sontakke S, Breithschwerdt EB, et al. Identification of bacteria from clinical samples using *Bartonella* alpha-proteobacteria growth medium. *J Microbiol Methods* 2007; 71 : 147-55.
- Angelakis E, Richet H, Rolain JM, La Scola B, Raoult D. Comparison of real-time quantitative PCR and culture for the diagnosis of emerging *Rickettsioses*. *PLoS Negl Trop Dis* 2012; 6 : e1540.
- Safont M, Angelakis E, Richet H, Lepidi H, Fournier PE, Drancourt M, et al. Bacterial lymphadenitis at a major referral hospital in France from 2008 to 2012. *J Clin Microbiol* 2014; 52 : 1161-7.
- Asano T, Ichiki K, Koizumi S, Kaizu K, Hatori T, Fujino O, et al. High prevalence of antibodies against *Bartonella henselae* with cervical lymphadenopathy in children. *Pediatr Int* 2010; 52 : 533-5.
- Koehler JE, Sanchez MA, Tye S, Garrido-Rowland CS, Chen FM, Maurer T, et al. Prevalence of *Bartonella* infection among human immunodeficiency virus-infected patients with fever. *Clin Infect Dis* 2003; 37 : 559-66.
- Mazur-Melewska K, Mania A, Kemnitz P, Figlerowicz M, Stuzewski W. Cat-scratch disease: A wide spectrum of clinical pictures. *Postepy Dermatol Alergol* 2015; 32 : 216-20.
- Biancardi AL, Curi AL. Cat-scratch disease. *Ocul Immunol Inflamm* 2014; 22 : 148-54.
- Chaudhry R, Mukherjee A, Menon V. Isolation & characterization of *Bartonella* sp. from optic neuritis patients. *Indian J Med Res* 2012; 136 : 985-90.
- Goldstein DA, Mouritsen L, Friedlander S, Tessler HH, Edward DP. Acute endogenous endophthalmitis due to *Bartonella henselae*. *Clin Infect Dis* 2001; 33 : 718-21.
- Latanza L, Viscogliosi F, Solimeo A, Calabrò F, De Angelis V, De Rosa P, et al. Choroidal neovascularisation as an unusual ophthalmic manifestation of cat-scratch disease in an 8-year-old girl. *Int Ophthalmol* 2015; 35 : 709-16.
- Drancourt M, Bodaghi B, Lepidi H, Le Hoang P, Raoult D. Intraocular detection of *Bartonella henselae* in a patient with HLA-B27 uveitis. *J Clin Microbiol* 2004; 42 : 1822-5.
- Wade NK, Levi L, Jones MR, Bhisitkul R, Fine L, Cunningham ET Jr, et al. Optic disk edema associated with peripapillary serous retinal detachment: An early sign of systemic *Bartonella henselae* infection. *Am J Ophthalmol* 2000; 130 : 327-34.

For correspondence: Dr Rama Chaudhry, Department of Microbiology, All India Institute of Medical Sciences, Ansari Nagar, New Delhi 110 029, India
e-mail: drammach@gmail.com