

Research Paper

Pre-existing anti-polyethylene glycol antibody reduces the therapeutic efficacy and pharmacokinetics of PEGylated liposomes

Yuan-Chin Hsieh^{1,4*}, Hsin-Ell Wang^{2*}, Wen-Wei Lin^{1,4,12}, Steve R. Roffler⁵, Ta-Chun Cheng⁴, Yu-Cheng Su⁵, Jia-Je Li², Chao-Cheng Chen², Chun-Han Huang², Bing-Mae Chen⁵, Jaw-Yuan Wang^{4,7}, Tian-Lu Cheng^{1,3,4,6,8}✉, Fang-Ming Chen^{4,9,10,11}✉

1. Graduate Institute of Medicine, College of Medicine, Kaohsiung Medical University, 100 Shih-Chuan First Road, Kaohsiung 80708, Taiwan
2. Department of Biomedical Imaging and Radiological Sciences and Institute of Microbiology and Immunology, National Yang-Ming University, Taipei, Taiwan
3. Institute of Biomedical Sciences, National Sun Yat-sen University, Kaohsiung, Taiwan
4. Center for Biomarkers and Biotech Drugs, Kaohsiung Medical University, 100 Shih-Chuan First Road, Kaohsiung 80708, Taiwan
5. Institute of Biomedical Sciences, Academia Sinica, 128 Academia Road, Section 2, Taipei 11529, Taiwan
6. Department of Biomedical Science and Environmental Biology, Kaohsiung Medical University, 100 Shih-Chuan First Road, Kaohsiung 80708, Taiwan
7. Department of Surgery, Faculty of Medicine, College of Medicine, Kaohsiung Medical University, 100 Shih-Chuan First Road, Kaohsiung 80708, Taiwan
8. Department of Medical Research, Kaohsiung Medical University Hospital, Kaohsiung, Taiwan
9. Department of Surgery, Kaohsiung Municipal Ta-Tung Hospital, 68 Jhonghua third Road, Kaohsiung 80145, Taiwan
10. Cancer Center, Kaohsiung Municipal Ta-Tung Hospital, 68 Jhonghua third Road, Kaohsiung 80145, Taiwan
11. Division of Breast Surgery, Department of Surgery, Kaohsiung Medical University Hospital, Kaohsiung Medical University Hospital, 100 Tzyou first Road, Kaohsiung 80708, Taiwan
12. Department of Laboratory Medicine, School of Medicine, College of Medicine, Kaohsiung Medical University, Kaohsiung, Taiwan

* Yuan-Chin Hsieh and Hsin-Ell Wang contributed equally to this work.

✉ Corresponding authors: fchen@cc.kmu.edu.tw, tlcheng@kmu.edu.tw

© Ivyspring International Publisher. This is an open access article distributed under the terms of the Creative Commons Attribution (CC BY-NC) license (<https://creativecommons.org/licenses/by-nc/4.0/>). See <http://ivyspring.com/terms> for full terms and conditions.

Received: 2017.07.31; Accepted: 2018.04.02; Published: 2018.05.09

Abstract

Rationale: Increasing frequency of human exposure to PEG-related products means that healthy people are likely to have pre-existing anti-PEG antibodies (pre- α PEG Ab). However, the influence of pre- α PEG Abs on the pharmacokinetics (PK) and therapeutic efficacy of LipoDox is unknown.

Methods: We generated two pre- α PEG Ab mouse models. First, naïve mice were immunized with PEGylated protein to generate an endogenous α PEG Ab titer (endo α PEG). Second, monoclonal α PEG Abs were passively transferred (α PEG-PT) into naïve mice to establish a α PEG titer. The naïve, endo α PEG and α PEG-PT mice were intravenously injected with ¹¹¹In-labeled LipoDox to evaluate its PK. Tumor-bearing naïve, endo α PEG and α PEG-PT mice were intravenously injected with ¹¹¹In-labeled LipoDox to evaluate its biodistribution. The therapeutic efficacy of LipoDox was estimated in the tumor-bearing mice.

Results: The areas under the curve (AUC)_{last} of LipoDox in endo α PEG and α PEG-PT mice were 11.5- and 15.6- fold less, respectively, than that of the naïve group. The biodistribution results suggested that pre- α PEG Ab can significantly reduce tumor accumulation and accelerate blood clearance of ¹¹¹In-labeled LipoDox from the spleen. The tumor volumes of the tumor-bearing endo α PEG and α PEG-PT mice after treatment with LipoDox were significantly increased as compared with that of the tumor-bearing naïve mice.

Conclusions: Pre- α PEG Abs were found to dramatically alter the PK and reduce the tumor accumulation and therapeutic efficacy of LipoDox. Pre- α PEG may have potential as a marker to aid development of personalized therapy using LipoDox and achieve optimal therapeutic efficacy.

Key words: PEG, Polyethylene glycol, anti-PEG antibodies, liposome, LipoDox, ELISA

Introduction

PEGylated agents are widely used in clinical therapy because PEGylation of drugs improves therapeutic efficacy, reduces cytotoxicity, and enhances half-life. For example, modification of nano

drug carriers (liposomes or micelles) with PEG provides a steric barrier preventing recognition by cells of the mononuclear phagocyte system [1, 2]. PEGylation also enhances the enhanced permeability and retention (EPR) effect of liposomal doxorubicin (Doxil/Caelyx/LipoDox) that is used to treat ovarian and breast carcinomas and Kaposi's sarcoma [3-5], and a PEG-micelle drug (Genexol-PM) is currently undergoing phase I/II clinical trials for treatment of lung cancer and solid tumors [6, 7]. The long half-life of PEGylated epoetin beta (Mircera) was used to help erythropoiesis in the human body [8]. In addition, modification of interferon with PEG (PEG-Intron, Pegasys) increased its serum half-life, therapeutic efficacy and the quality of life of hepatitis C patients [9, 10]. PEG is currently the gold standard polymer for development of long-circulating drugs and is regarded as the third generation of therapeutic agents.

Alongside the increasing use of PEGylated agents, generation of α PEG antibodies (α PEG Abs) has resulted in reduction of the therapeutic efficacy and alteration of the PK of PEGylated agents. For example, Ganson et al. found that 38% of hyperuricemia patients have anti-PEG IgM and IgG Abs, which resulted in a reduced half-life and therapeutic efficacy of PEG-uricase (pegloticase). [11]. Ganson and colleagues reported that a patient with acute coronary syndrome receiving Pegnivacogin (a PEGylated coagulation factor IXa inhibitor) treatment developed serious life-threatening allergic reactions due to formation of a pre-existing α PEG Ab (pre- α PEG Ab)-pegnivacogin immune complex, a finding that led to early termination of the phase 2b clinical trial [12]. In addition, Zhao et al. found the α PEG Ab decreased the serum half-life of PEGylated solid lipid nanoparticle (SLN) carriers by 50% in mice and beagles [13]. Wang et al. repeatedly administered PEGylated liposomal carriers to induce α PEG Abs, which dramatically increased the hepatic clearance of PEG-liposome from 0.0045 to 28.5 mL/h *in vivo* [14]. These studies all suggested that the α PEG Ab can affect the PK and therapeutic efficacy of PEGylated pharmaceuticals or nano-carriers. However, the effect of pre- α PEG Abs on the therapeutic efficacy and pharmacokinetics of PEGylated liposomal doxorubicin (LipoDox) remains unexplored.

In this study, we generated two α PEG animal models with pre-existing α PEG titer to evaluate the PK, tumor accumulation and therapeutic efficacy of LipoDox. In the first model, naïve BALB/c mice were immunized with PEGylated molecules to induce an endogenous α PEG Ab titer (endo α PEG). In the second model, naïve mice were intravenously (IV) passively transferred with α PEG Ab to generate a pre-existing α PEG Ab titer (α PEG-PT). The

concentration and specificity of α PEG Ab in endo α PEG mice were confirmed by α PEG Ab quantitative ELISA and competition ELISA. For PK study, the naïve, endo α PEG, and α PEG-PT mice were IV injected with ^{111}In -labeled LipoDox and the blood radioactivity was measured. CT26 tumor-bearing naïve, endo α PEG and α PEG-PT mice were IV injected with DIR-labeled liposome to estimate its accumulation efficacy in tumors. These CT26 tumor-bearing mice were IV injected with ^{111}In -labeled LipoDox to evaluate its biodistribution in different organs. Finally, these tumor-bearing mice were injected with LipoDox and tumor volumes were measured to evaluate the therapeutic efficacy. These results suggest that α PEG Ab affects the therapeutic efficacy of LipoDox and α PEG Ab could be used as a marker in the development of personal therapies using PEGylated nanomedicines.

Methods

Drug and reagents

LipoDox (pegylated liposomal doxorubicin HCl, 2 mg/mL) was purchased from Taiwan Tung Yang Biopharm Company Ltd. Lipo-DIR (pegylated liposomal, 1'-Dioctadecyl-3,3',3'-Tetramethylindotricarbocyanine Iodide), ABTS solution (0.4 g/mL), ABTS [2-azinobis (3-ethylbenzthiazoline-6-sulfonic acid)] was purchased from Sigma-Aldrich. Anti-PEG IgG antibody 6.3 [15] and anti-IgM AGP4 [16] monoclonal Ab were from Academia Sinica. Complete adjuvant (F5581 SIGMA Freund's Adjuvant, Complete) and incomplete Freund's Adjuvant (F5506 SIGMA Freund's Adjuvant, Incomplete) was purchased from Sigma-Aldrich.

Cells and animals

CT26 colon cancer cells (American Type Culture Collection) were cultured in DMEM (Sigma-Aldrich) supplemented with 10% bovine calf serum, 100 units/mL penicillin, and 100 $\mu\text{g}/\text{mL}$ streptomycin at 37 °C in an atmosphere of 5% CO_2 . Specific pathogen-free female BALB/c mice were obtained from the National Laboratory Animal Center, Taipei, Taiwan. All animal experiments were conducted in accordance with institutional guidelines and approved by the Animal Care and Use Committee of the Kaohsiung Medical University.

The preparation of PEGylated e β G and HSA

β -glucuronidase from *Escherichia coli* (e β G) and human serum albumin (HSA) were passed through a Sephadex G-25 column equilibrated with 0.1 M NaHCO_3 , pH 8.0, and then concentrated by ultrafiltration to 2 mg/mL. CH₃-PEG₅₀₀₀-NHS (molar ratio protein: CH₃-PEG5000-NHS=1:200) was added

for 2 h at room temperature. One-tenth volume of a saturated solution of 1 M Tris-buffer (pH 8.0) was added to stop the reaction. Unreacted PEG was removed by dialysis. Protein concentrations were determined by the bicinchoninic acid assay (Pierce, Rockford, IL) with bovine serum albumin used as the reference protein. The molecular weights of PEGylated e β G and HSA were confirmed by SDS-polyacrylamide gel electrophoresis (data not shown).

Preparation of ^{111}In -labeled PEGylated liposomal doxorubicin

The labeling protocol was according to our previous reports [17, 18]. An adequate amount of $^{111}\text{InCl}$ (in 0.05 M HCl), 10 μL 8-hydroxyquinoline (68 mM oxine in ethanol; Sigma-Aldrich Corp., St. Louis, MO, USA), and 500 μL acetate buffer (0.1 M, pH 5.5; J.T. Baker Inc., Phillipsburg, NJ, USA) were added into a sample vial and then incubated at 50 $^{\circ}\text{C}$ for 30 min. After cooling to ambient temperature, ^{111}In -oxine was extracted by chloroform and dried by rotary evaporator. ^{111}In -oxine residue was dissolved in 20 μL of ethanol and added to 80 μL of distilled water and then incubated with 1 mL of PEGylated liposomal doxorubicin at 45 $^{\circ}\text{C}$ for 30 min and cooled down to 4 $^{\circ}\text{C}$ for another 30 min. The crude mixture was purified by a Sepharose 4B gel size-exclusion column to get the final product ^{111}In -labeled PEGylated liposomal doxorubicin (^{111}In -LipoDox). The radiochemical yield and radiochemical purity of ^{111}In -LipoDox were approximately 20% and >90%, respectively.

Generation of mice with the αPEG Ab *in vivo*

We developed two pre-existing anti-PEG antibody mice, endogenous αPEG (endo αPEG), and passive transfer anti-PEG antibody (αPEG -PT). The endo αPEG mouse model (N=36) was generated by a traditional protocol developed by Leenaars et al. [19]. We choose four-week-old female BALB/c mice and immunized them once a month for two months. At the 1st boost, the mice were subcutaneously injected with 60 μg PEG₅₀₀₀-e β G containing 50% complete adjuvant to a total volume (antigen volume: adjuvant volume = 1:1) of 100 μL . At the 2nd boost, the mice were subcutaneously injected with 60 μg PEG₅₀₀₀-HSA containing 50% incomplete adjuvant to a total volume (antigen volume: adjuvant volume = 1:1) of 100 μL . The anti-PEG titer of the mice was analyzed by antibody ELISA. The anti-PEG PT was developed by choosing eight-week-old female BALB/c mice and IV passively transferring 4 mg/kg anti-PEG monoclonal antibody (IgG₁, Clone 6.3).

Assessment of the pre-existing αPEG Ab by αPEG quantitative ELISA

96-well plates (Nalge Nunc International, Roskilde, Denmark) were coated with 20 $\mu\text{g}/\text{mL}$ of $\text{CH}_3\text{-PEG}_{2000}\text{-NH}_2$ in 0.1 M NaHCO_3 for 1 h at 37 $^{\circ}\text{C}$. After blocking the plates with 5% skim milk in PBS overnight at 4 $^{\circ}\text{C}$, the plates were washed with PBS twice. Mice serum samples at dilutions of 25- and 50-fold and serially-diluted IgG-6.3 and IgM-AGP4 antibody standards (in duplicate) were added to separate plates (50 $\mu\text{L}/\text{well}$) at 37 $^{\circ}\text{C}$ for 1 h. Unbound antibodies were removed by washing the plates three times with PBS. Horseradish peroxidase-conjugated isotype-specific goat anti-mouse IgG or IgM secondary antibodies were added to the well to further detect the isotype of pre-existing αPEG in mice. The plates were washed with PBS three times, and bound antibody was measured by adding 150 $\mu\text{L}/\text{well}$ ABTS solution (0.003% H_2O_2 and 100 mM phosphate-citrate, pH=4.0) for 30 min at room temperature. The absorbance was measured at 405 nm with blank subtraction. All incubations were conducted in triplicate and data is presented as mean \pm SD. The relative concentrations of anti-PEG IgG or IgM in mice serum samples were calculated by comparison with IgG-6.3 and IgM-AGP4 standard curves, respectively.

Assessment of the specificity of pre-existing αPEG Ab by αPEG competition ELISA

The specific ability of monoclonal antibody IgG, IgM αPEG antibody and αPEG mice serum to bind LipoDox was evaluated using a competition-based ELISA. The αPEG -positive mouse serum was collected to confirm the binding specificity to LipoDox. Each pre-existing αPEG -positive mouse was labeled by an ear-punching system; for example, the number '3-2' represents animal number 2 in cage 3. $\text{CH}_3\text{-PEG}_{2000}\text{-NH}_2$ with a similar molecular weight as the PEG on LipoDox was coated on 96-well plates (Nalge Nunc International, Roskilde, Denmark). The 96-well plates were coated with 20 $\mu\text{g}/\text{mL}$ of $\text{CH}_3\text{-PEG}_{2000}\text{-NH}_2$ in 0.1 M NaHCO_3 for 1 h at 37 $^{\circ}\text{C}$. After blocking the plates with 5% skim milk in PBS overnight at 4 $^{\circ}\text{C}$, the wells were washed 3 times with 200 μL of PBS-T (PBS, 0.05% Tween-20) and once with 200 μL of PBS. 5 $\mu\text{g}/\text{mL}$ of IgG, IgM or 50-fold diluted mouse serum were co-incubated with competitor (200 $\mu\text{g}/\text{mL}$ LipoDox) and added to the wells coated with PEG for 1 h at room temperature. After washing, horseradish peroxidase-conjugated goat anti-mouse IgG+M body was added to the wells (50 $\mu\text{L}/\text{well}$) at room temperature for 1 h. The plates were washed with PBST three times and PBS once and bound antibody was measured by adding 150 $\mu\text{L}/\text{well}$ ABTS

solution, 0.003% H₂O₂, and 100 mM phosphate-citrate (pH = 4.0) for 30 min at room temperature. The absorbance was measured at 405 nm with blank subtraction. All incubations were conducted in triplicate and data is presented as mean ± SD.

Pharmacokinetics of ¹¹¹In-labeled LipoDox in mice

The mice (N=4) were intravenously injected with ¹¹¹In-labeled LipoDox. The mouse blood was harvested at different times using a 1 µL capillary tube. The radioactivity of the serum was counted on a Wallac 1470 Wizard gamma counter (Perkin-Elmer) and expressed as percentage of injected dose per milliliter (%ID/mL). A sample of the ¹¹¹In-labeled LipoDox injection was used as the decay-corrected standard. The serum half-life of ¹¹¹In-labeled LipoDox was estimated by fitting the data to a non-compartmental model using WinNonlin 6.3 software (Pharsight Corp., Mountain View, California, USA).

In vivo optical imaging of fluorescently labeled PEG-liposome (Lipo-DIR)

BALB/c mice (N=3) bearing CT26 tumors (~100 mm³) on their right hind leg, were IV injected with anti-PEG antibody, anti-myc antibody, or saline buffer and then injected with Lipo-DIR820 (0.625 mg/kg body weight) 6 h later. The mice were anesthetized with isoflurane (Abbott Laboratories) using a vaporizer system (A.M. 272 Bickford). The distribution and accumulation of the fluorescent probes were measured by an IVIS Spectrum imaging system (Caliper Life Sciences) at 24, 48 and 72 h after injection. The regions-of-interest in tumor areas were drawn and analyzed with Living Image software version 4.2 (Caliper Life Sciences).

The Biodistribution of ¹¹¹In-labeled LipoDox

BALB/c mice bearing CT26 tumors (~50 mm³) on their right flanks were used for biodistribution studies. Each group (N=4) of mice was IV injected with 100 µCi ¹¹¹In-labeled LipoDox. For biodistribution, mice were sacrificed by CO₂ asphyxiation at 4, 24 and 48 h (4 mice per group) after administration of ¹¹¹In-labeled LipoDox. At each time point, the organs of interest were dissected and the blood was sampled via cardiac puncture. The tissue samples were rinsed in water, blotted dry, weighed, and then counted using a Wallac 1470 Wizard gamma counter. A sample of the ¹¹¹In-labeled LipoDox injection was used as the decay-corrected standard. Data are expressed as the percentage of the injected dose per gram of tissue (%ID/g).

In vivo treatment of CT26 tumor-bearing mice with LipoDox

Naïve, endo αPEG and αPEG-PT (αPEG IgG-6.3 Abs passively transferred) BALB/c mice bearing CT26 tumors (~100 mm³; N=4) in their right flanks were IV injected with LipoDox (3 mg/kg body weight) every 4 days for a total of 3 doses. The therapeutic efficacy was monitored by measuring tumor volume (length × width × height × 0.5) on a weekly basis. We independently repeated the experiment twice and combined the results (N=8) for statistical analysis.

Statistical analysis

The detection signal of competition ELISA in **Figure 2** was defined as the anti-PEG antibody against CH₃-PEG₂₀₀₀-NH₂ molecule that produced a statistically higher signal than the signal produced from the blank. Statistical significance was calculated using GraphPad Prism 6.0 with Student's t-test. In **Figures 1, 3-6**, the statistical difference between the αPEG group and naïve group was analyzed by comparing multiple t-tests. Data were considered statistically different at *, *P* < 0.05 and **, *P* < 0.0001.

Results

Characterization of αPEG Ab in mice

In order to generate an animal model (endo αPEG) to mimic humans who have pre-existing αPEG Abs and to evaluate whether αPEG Abs affect the PK, bio-distribution or therapeutic efficacy of PEG-liposomes *in vivo*, we generated two mouse models with pre-αPEG Abs (endo αPEG, αPEG-PT). Naïve BALB/c mice were immunized with PEGylated molecules to generate an endogenous αPEG Ab titer (endo αPEG). Additionally, naïve BALB/c mice were passively transferred with αPEG Ab (6.3) to generate an αPEG Ab titer (αPEG-PT). In order to measure the concentration of αPEG Ab in endo αPEG mice, the individual mice sera were collected at the times of the 1st (○) and 2nd (●) boosts. The concentrations of αPEG IgG and IgM Abs in endo αPEG were measured by mouse αPEG Ab quantitative ELISA. The diluted standard αPEG Ab and the endo αPEG mice serum were added to a CH₃-PEG₂₀₀₀-NH₂ (mPEG₂₀₀₀)-coated plate. The isotype-specific IgG and IgM secondary antibodies were added to the well to further confirm the isotype of pre-existing αPEG in mice. **Figure 1A** shows that the pre-existing Ab concentration after the PEGylated protein immunization of anti-PEG IgG was initially 1.29±0.53 µg/mL and then 14.57±3.29 µg/mL, and that of anti-IgM was initially 0.67±0.10 µg/mL and then 0.39±0.06 µg/mL, indicating the pre-αPEG Ab isotype switched to IgG-dominant in endo αPEG mice.

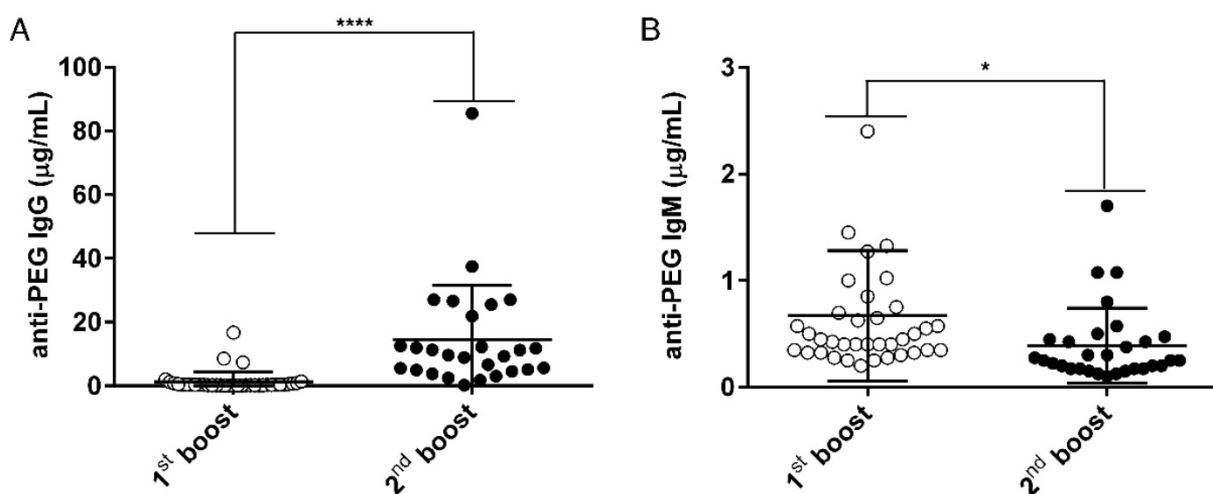


Figure 1. Characterization of the α PEG Ab concentration in the endo α PEG mice. BALB/c mice (N=36, one symbol represents one animal) were immunized with PEGylated protein (PEGylated-e β G and -HSA). The serum of each mouse was collected after the 1st (○) and 2nd (●) boost. The serum from each mouse was diluted with 2% skim milk buffer, and then added to a CH₃-PEG₂₀₀₀-NH₂-coated plate. **(A)** Pre-existing IgG and **(B)** pre-existing IgM were incubated with HRP-conjugated goat anti-IgG and IgM specific antibodies. The relative concentrations of anti-PEG IgG or IgM in mice serum samples were calculated by comparison with IgG-6.3 and IgM-AGP4 standard curves, respectively. Data are represented as mean \pm SD. Statistical analysis was performed by comparing multiple t tests, *, $P < 0.05$ and, ****, $P < 0.0001$.

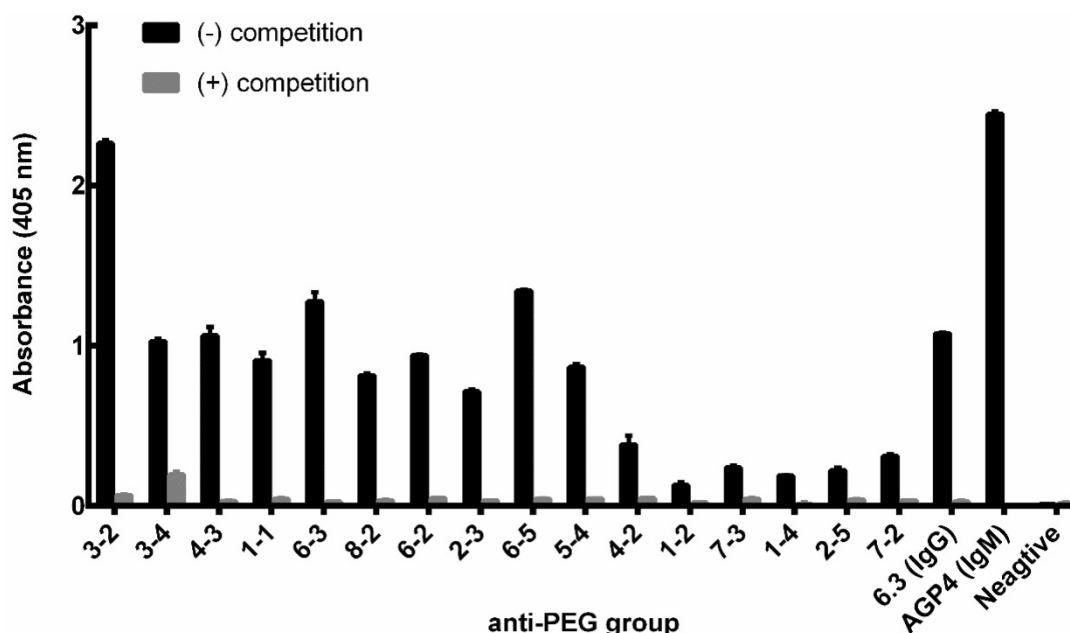


Figure 2. Competition assay of α PEG Ab from endogenous mouse serum. The α PEG monoclonal Abs AGP4 (IgM; 5 μ g/mL), 6.3 (IgG; 5 μ g/mL) and 50-fold diluted α PEG mouse serum sample were added to wells pre-coated with CH₃-PEG₂₀₀₀-NH₂. LipoDox (200 μ g/mL) was added as a competitor to compete for binding of the α PEG Ab to the CH₃-PEG₂₀₀₀-NH₂ well coating. Each pre-existing α PEG-positive mouse was labeled using an ear-punching system; for example, the number '3-2' represents animal number 2 in cage 3. The mean absorbance values (405 nm) of duplicate determinations are shown. (Bars, SD).

In order to confirm whether the α PEG Ab of endo α PEG or α PEG-PT mice could specifically bind to PEG molecules, the endo α PEG mouse serum, α PEG IgM Ab (AGP4) and α PEG IgG Ab (6.3) were incubated with or without PEGylated-liposomal doxorubicin (LipoDox) to compete for binding with the α PEG Abs, then added to a 96-well plate coated with CH₃-PEG₂₀₀₀-NH₂ antigen to measure the specificity of α PEG Ab. **Figure 2** shows that the binding ability of α PEG and the pre- α PEG Ab to mPEG₂₀₀₀-NH₂ was reduced by incubation with LipoDox, demonstrating that the pre- α PEG Ab in

endo α PEG mice specifically bound to LipoDox. Together, we have successfully established a pre- α PEG mouse model that can mimic the human condition to investigate the influence on the PK, biodistribution and therapeutic efficacy of the PEG-liposomal drug *in vivo*.

Influence of α PEG Abs on the PK of ¹¹¹In-labeled LipoDox

To understand whether pre- α PEG Abs alter the PK of PEG-liposomal drugs (PEGylated liposomal doxorubicin; LipoDox), the naïve, endo α PEG and α PEG-PT mice were injected with ¹¹¹In-labeled

LipoDox. The naïve mice were further injected with α PEG Ab at 5 h post-inoculation (α PEG-PT-5h) of the ^{111}In -labeled LipoDox to confirm whether the α PEG Ab is the key factor for the alteration of the PK of LipoDox. The radioactivity of blood samples was counted by a gamma counter at different time points and the AUC parameter was used to determine the alteration of pharmacokinetics as calculated by WinNonlin program (Table 1). Figure 3A shows that, compared with the naïve group, the radioactivity of the ^{111}In -labeled LipoDox was significantly reduced in endo α PEG and α PEG-PT. When α PEG Abs were passively injected at 5 h post-inoculation of the ^{111}In -labeled LipoDox, the radioactivity of the blood was dramatically decreased in naïve mice. The AUC_{last} values in naïve, endo α PEG, α PEG-PT, and α PEG-PT-5 h were 1388.07, 120.35, 88.79 and 256.51 $\text{h} \cdot \% \text{ID}/\text{mL}$, respectively. At the end of the observed point, the AUC_{last} of LipoDox in endo α PEG, α PEG-PT and PEG-PT-5 h were 11.5-, 15.6- and 5.41-fold less than that of the naïve group, respectively (Table 1). These results suggest that the pre-existing and post inoculated α PEG Abs dramatically reduced the pharmacokinetics of ^{111}In -labeled LipoDox *in vivo*. In order to understand the blood clearance level of α PEG Ab at different time points after injecting α PEG Ab (in anti-PEG PT model), we collected the blood samples from naïve, endo α PEG and α PEG-PT BALB/c mice and measured the concentration of α PEG Ab by quantitative α PEG ELISA. The results show that the pre-existing α PEG Ab levels in the α PEG-PT and endo α PEG group (Figure 3B-C) decreased after injecting ^{111}In -labeled LipoDox. In addition, the pre-existing α PEG Ab level in the endo α PEG group was recovered, accompanied by a decrease in ^{111}In -labeled LipoDox, indicating the pre-existing α PEG Abs could specifically accelerate the clearance of LipoDox *in vivo*.

Table 1. Pharmacokinetics of ^{111}In -labeled LipoDox *in vivo*. The serum half-life of ^{111}In -labeled LipoDox was estimated by fitting the data to a non-compartmental model using WinNonlin 6.3 software. (N = 4 for each group)

	Naïve	Endo α PEG	α PEG-PT	α PEG-PT-5h
AUC_{last} (h \cdot %ID/mL)	1388.07	120.35	88.79	256.51
$\text{AUC}_{0-\infty}$ (h \cdot %ID/mL)	1628.25	311.84	186.64	286.47
CL (mL/h)	0.06	0.32	0.54	0.35
MRT_{last} (h)	24.96	24.35	20.93	12.69

AUC_{last} : area under curve from time 0 to the observed time point; $\text{AUC}_{0-\infty}$: area under curve calculated from time 0 to infinity; CL: clearance rate; MRT_{last} : mean residence time from time 0 to the observed time point

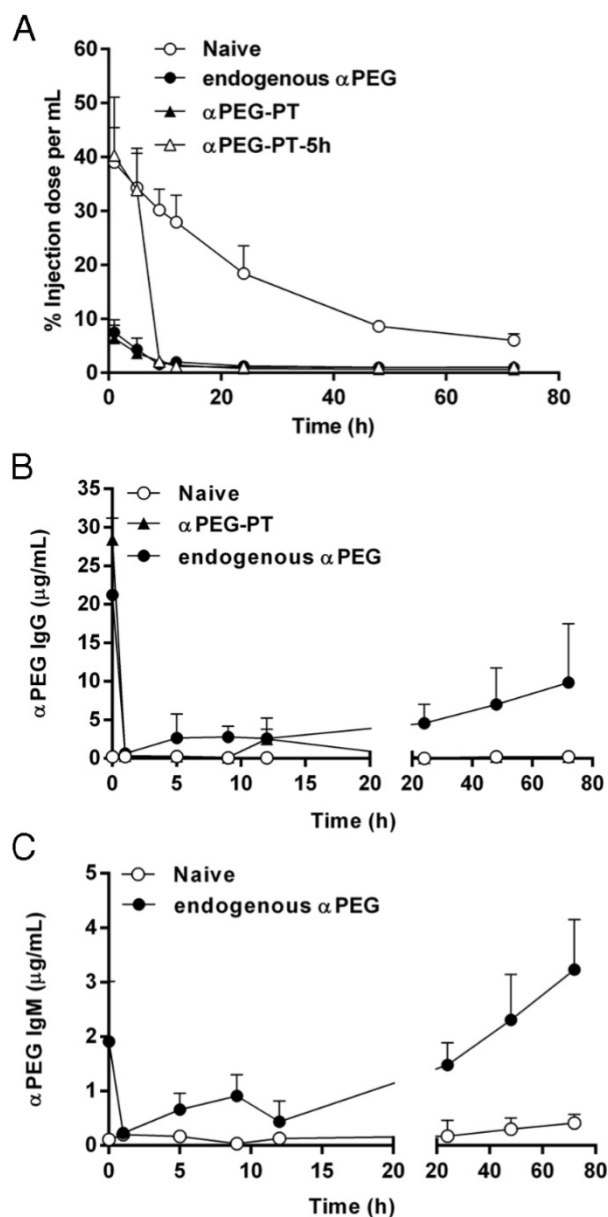


Figure 3. Influence of α PEG Ab on the pharmacokinetics of ^{111}In -labeled LipoDox. (A) Naïve (\circ), endo α PEG (\bullet) and α PEG-PT (\blacktriangle) BALB/c mice were IV injected with ^{111}In -labeled LipoDox. The α PEG-PT-5 h (\triangle) mice were injected with α PEG Ab and injected with ^{111}In -labeled LipoDox 5 h later. The blood was harvested at different times. The pharmacokinetics of ^{111}In -labeled LipoDox was analyzed using a γ -counter. (B) The sera of mice with pre-existing α PEG IgG and (C) pre-existing α PEG IgM were also measured by quantitative α PEG Ab ELISA. Data are represented as mean \pm SD. Statistical analysis was performed by comparing multiple t-tests. **, $P < 0.0001$ as compared to the naïve group.

Influence of α PEG Abs on the accumulation of fluorescently labeled PEG-liposome in tumors

In order to assess whether the pre- α PEG Ab alters the tumor accumulation of PEG-liposome, the CT26 tumor xenografted naïve, endo α PEG, α PEG-PT mice were IV injected with Lipo-DIR probe. The fluorescence intensity in the tumor region was acquired by an IVIS spectrum image system at 24, 48, and 72 h. Figure 4A shows that the fluorescence intensity of tumors in naïve mice was significant

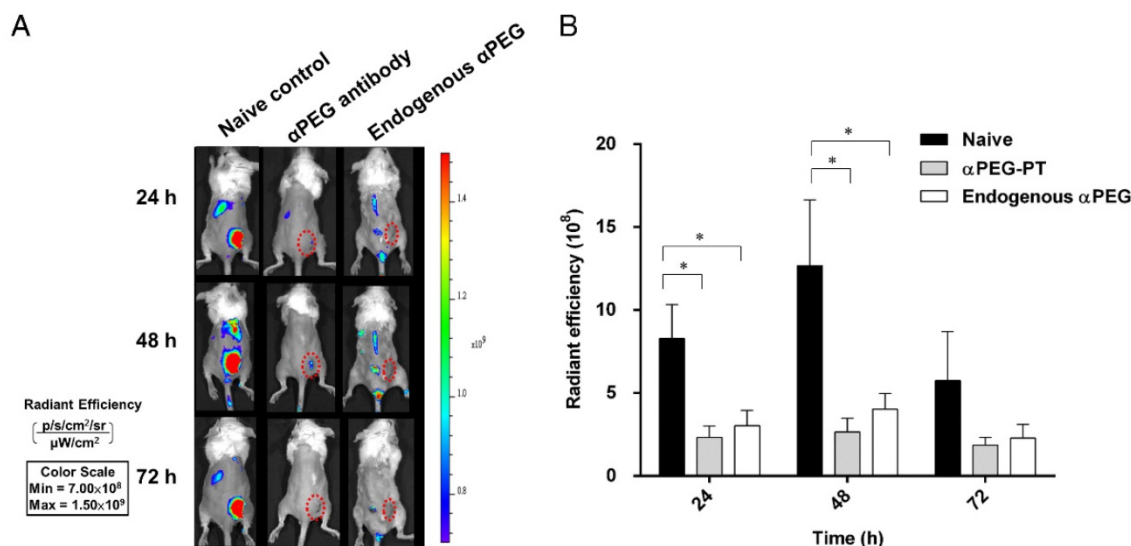


Figure 4. Influence of α PEG Ab on the accumulation of fluorescently labeled PEG-liposome in tumors. **(A)** Naive, α PEG-PT and endo α PEG BALB/c mice bearing CT26 tumors were IV injected with fluorescently labeled PEG-liposome (Lipo-DIR). Mice were sequentially imaged at 24, 48 and 72 h with an IVIS spectrum optical imaging system. **(B)** The fluorescence intensity of Lipo-DIR in the tumor was analyzed with Living Image software version 4.2. Statistical analysis was performed by compare multiple t-tests. *, $P < 0.05$ as compared to the naive group.

higher than that in endo α PEG or α PEG-PT mice. The fluorescence intensity of Lipo-DIR in the tumor region in α PEG-PT mice was 3.55-, 4.76-, and 3.09-fold less and in endo α PEG mice was 2.74-, 3.15-, and 2.52-fold less than that in the naive mice at 24, 48 and 72 h, respectively (Figure 4B). These results indicate that pre- α PEG Abs could significantly reduce ($P < 0.05$) the tumor accumulation of PEG-liposome.

Biodistribution of ¹¹¹In-labeled LipoDox in α PEG Ab mice

In order to assess whether pre- α PEG Abs alter the biodistribution of LipoDox in mice, ¹¹¹In-labeled LipoDox (100 μ Ci) was IV injected into CT26 tumor-bearing naive, endo α PEG and α PEG-PT mice. The radioactivity of ¹¹¹In-labeled LipoDox was measured in blood samples, tumors and various organs collected at different times (Tables 2-4) and is summarized as follows: (a) The radioactivity of ¹¹¹In-labeled LipoDox in the blood of α PEG-PT mice was 32.94-, 22.78-, and 16.73-fold less, and in endo α PEG was 54.20-, 15.68-, and 9.86-fold less than in naive mice at 6, 24 and 48 h, respectively (Figure 5A), indicating that pre- α PEG Ab accelerates clearance of ¹¹¹In-labeled LipoDox in blood. (b) Figure 5B also shows that the radioactivity of ¹¹¹In-labeled LipoDox in tumors of α PEG-PT mice was 2.12-, 2.78-, and 5.30-fold less, and in endo α PEG was 9.30-, 6.13-, and 10.27-fold less than in naive mice at 6, 24 and 48 h, respectively, indicating that pre- α PEG reduced the accumulation of ¹¹¹In-labeled LipoDox in tumors. (c) The radioactivity of ¹¹¹In-labeled LipoDox in the spleen and liver of α PEG-PT mice was 2.89-, 2.30-, and 1.80-fold for spleen and 1.17-, 1.11-, and 1.09-fold for

liver and that of endo α PEG was 3.58-, 2.81-, and 2.08-fold for spleen and 1.31-, 1.10-, and 1.03-fold for liver in comparison with naive mice at 6, 24 and 48 h, respectively (Figure 5C-D). The bio-distribution level of ¹¹¹In-labeled LipoDox seems to be slightly increased in the liver and spleen of the pre-existing α PEG Ab mice as compared with that of the naive group, but only spleen showed a significant difference in the statistical analysis, indicating that ¹¹¹In-labeled LipoDox was mainly cleared from the spleen.

Table 2. Biodistribution of ¹¹¹In-LipoDox 6 h after intravenous injection in CT26 tumor-bearing mice. Values are presented as percentage of injected dose per gram (%ID/g; mean \pm standard error of the mean; N= 3 at each time point).

Organ	Naive	α PEG antibody PT	Endogenous α PEG
Blood	50.41 \pm 1.07	1.53 \pm 0.32	0.93 \pm 0.15
Tumor	25.96 \pm 3.90	12.23 \pm 5.78	2.79 \pm 1.82
Spleen	18.24 \pm 2.04	52.83 \pm 8.47	65.33 \pm 10.25
Liver	7.43 \pm 0.26	8.71 \pm 0.81	9.74 \pm 2.33
SI	14.24 \pm 6.06	21.08 \pm 9.58	2.11 \pm 0.95
LI	1.27 \pm 0.64	2.39 \pm 0.68	0.31 \pm 0.04
Muscle	0.38 \pm 0.05	3.08 \pm 2.22	0.39 \pm 0.27
Bone	0.70 \pm 0.20	0.99 \pm 0.60	0.47 \pm 0.25
Marrow	7.11 \pm 3.33	9.69 \pm 1.10	18.15 \pm 1.87
Bladder	1.49 \pm 0.17	2.39 \pm 0.87	0.22 \pm 0.25
Kidney	7.08 \pm 0.42	3.86 \pm 0.47	1.43 \pm 0.14
Urine	0.27 \pm 0.23	1.01 \pm 1.19	0.80 \pm 0.30
Feces	0.52 \pm 0.11	0.47 \pm 0.07	0.31 \pm 0.11

SI: small intestine; LI: large intestine

Effect of a PEG Ab on the therapeutic efficacy of LipoDox in vivo

In order to assess whether the pre- α PEG Abs reduced the therapeutic efficacy of LipoDox, the CT26 tumor-bearing naive, endo α PEG, and α PEG-PT mice

were IV injected with PBS or LipoDox (3 mg/kg/dose every 4 days, for three doses). The tumor volume was measured every two days. **Figure 6** shows that the tumor sizes of the two LipoDox-treated groups (endo α PEG and α PEG-PT mice) were similar to that of the untreated controls but was larger than that of treated naïve mice. These results indicate that the pre- α PEG Ab might significantly ($P < 0.05$) reduce the therapeutic efficacy of LipoDox.

Table 3. Biodistribution of ¹¹¹In-LipoDox 24 h after intravenous injection in CT26 tumor-bearing mice. Values are presented as percentage of injected dose per gram (%ID/g; mean \pm standard error of the mean; N= 3 at each time point).

Organ	Naïve	α PEG antibody PT	Endogenous α PEG
Blood	19.14 \pm 2.11	0.84 \pm 0.25	1.22 \pm 0.16
Tumor	25.02 \pm 7.08	8.97 \pm 2.96	4.08 \pm 0.55
Spleen	31.49 \pm 3.37	72.45 \pm 27.16	88.75 \pm 16.51
Liver	10.60 \pm 1.00	11.82 \pm 0.80	11.67 \pm 0.87
SI	28.16 \pm 5.74	6.91 \pm 1.52	2.03 \pm 0.66
LI	3.44 \pm 0.97	1.20 \pm 0.43	0.93 \pm 0.31
Muscle	0.68 \pm 0.27	1.16 \pm 1.28	0.52 \pm 0.07
Bone	0.76 \pm 0.49	0.73 \pm 0.31	0.33 \pm 0.14
Marrow	18.76 \pm 24.22	5.60 \pm 5.57	32.07 \pm 20.21
Bladder	1.78 \pm 0.67	1.47 \pm 0.85	1.52 \pm 0.72
Kidney	8.47 \pm 1.54	5.08 \pm 0.56	4.10 \pm 0.33
Urine	1.12 \pm 0.32	2.32 \pm 0.13	1.56 \pm 1.37
Feces	0.34 \pm 0.15	1.03 \pm 0.37	1.08 \pm 0.72

SI: small intestine; LI: large intestine

Table 4. Biodistribution of ¹¹¹In-LipoDox 48 h after intravenous injection in CT26 tumor-bearing mice. Values are presented as percentage of injected dose per gram (%ID/g; mean \pm standard error of the mean; N= 3 at each time point).

Organ	Naïve	α PEG antibody PT	Endogenous α PEG
Blood	9.37 \pm 0.73	0.56 \pm 0.03	0.95 \pm 0.26
Tumor	49.65 \pm 20.59	9.36 \pm 3.53	4.83 \pm 1.38
Spleen	51.08 \pm 9.56	92.12 \pm 8.89	106.30 \pm 18.00
Liver	11.63 \pm 1.07	12.71 \pm 0.14	12.01 \pm 0.32
SI	20.42 \pm 4.24	9.07 \pm 2.55	1.89 \pm 0.34
LI	3.90 \pm 0.33	1.66 \pm 0.33	0.65 \pm 0.05
Muscle	0.88 \pm 0.41	1.41 \pm 0.70	0.31 \pm 0.15
Bone	0.91 \pm 0.29	1.17 \pm 0.57	0.92 \pm 0.68
Marrow	8.64 \pm 3.07	18.58 \pm 1.07	40.33 \pm 12.27
Bladder	1.30 \pm 0.02	1.46 \pm 0.08	1.03 \pm 0.22
Kidney	10.24 \pm 0.98	6.86 \pm 0.29	6.33 \pm 0.88
Urine	1.39 \pm 0.12	0.94 \pm 0.83	1.07 \pm 0.44
Feces	0.71 \pm 0.09	2.64 \pm 1.75	1.68 \pm 1.37

SI: small intestine; LI: large intestine

In addition, in order to investigate whether repeated injection of LipoDox would induce the production of α PEG Ab, the concentration of α PEG IgG and IgM Ab in naïve, endo α PEG and α PEG-PT BALB/c mice treated with LipoDox was measured by quantitative α PEG Ab ELISA. The result showed that repeated injection of LipoDox did not induce the production of α PEG IgG and IgM Abs in the naïve and passive transfer (PT) groups (**Figure S1**).

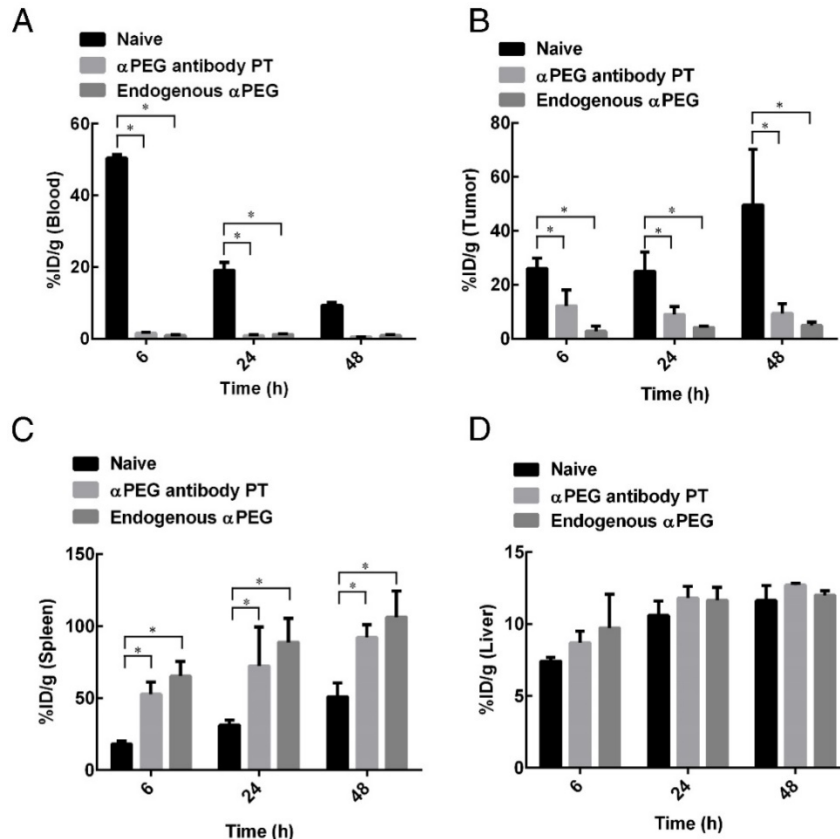


Figure 5. Biodistribution of ¹¹¹In-labeled LipoDox in α PEG Ab mice. Naïve, endo α PEG, and α PEG-PT BALB/c mice bearing CT26 tumors were IV injected with ¹¹¹In-labeled LipoDox. The mice were sacrificed at different times and the organs and blood were collected and weighed. The radioactivities of (A) blood, (B) tumor, (C) spleen and (D) liver were analyzed using a γ -counter. Statistical analysis was performed by comparing multiple t-tests. *, $P < 0.05$ as compared to the naïve group.

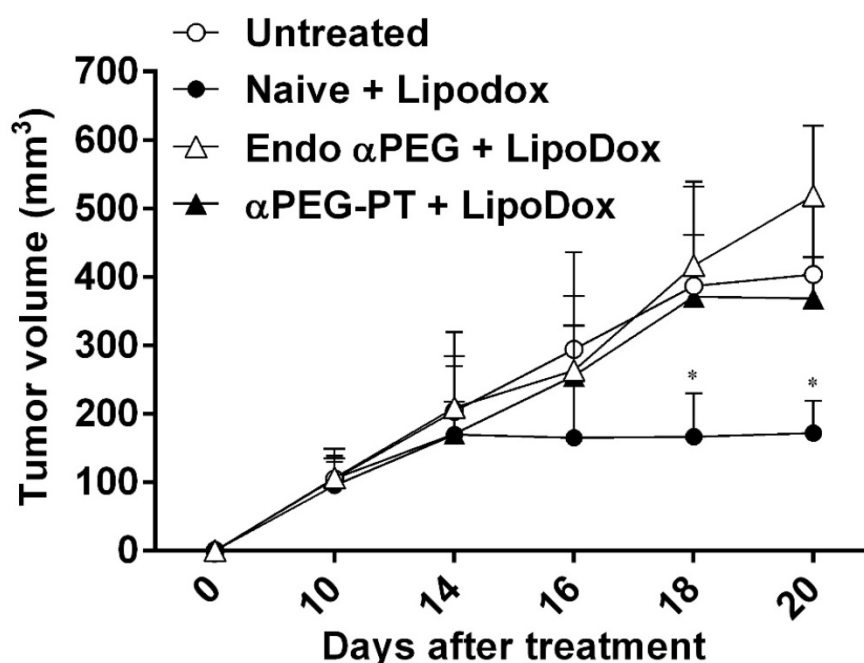


Figure 6. Effect of α PEG Ab on the therapeutic efficacy of LipoDox *in vivo*. CT26 tumor-bearing untreated (○), naïve (●), endo α PEG (△) and α PEG-PT (▲) BALB/c mice were IV injected with LipoDox (3 mg/kg body weight) every 4 days, 3 times. The tumor volume (length \times width \times height \times 0.5) was measured using calipers every 2 days. The results are shown as mean tumor size (n = 8) \pm SD. Statistical analysis was performed by comparing multiple t-tests. *, $P < 0.05$ as compared to the untreated group.

Discussion

In this study, we demonstrated that the presence of α PEG Ab or pre- α PEG Ab in mice alters the PK and reduces the tumor accumulation efficacy of LipoDox. In addition, pre- α PEG Ab accelerated the clearance of ^{111}In -labeled LipoDox in the blood and tumor region and enhanced spleen elimination, resulting in decreased therapeutic efficacy. These results indicate that α PEG Ab may have potential use as a marker in the development of personalized therapy using LipoDox and help to achieve optimal therapeutic efficacy.

An understanding of the clearance of PEGylated agents by α PEG Abs is important as α PEG Abs have been reported to reduce serum half-life and therapeutic efficacy in the clinic. Understanding the possible mechanism of elimination of PEGylated agents may help to use these therapies effectively. For example, Ishida et al. proposed repeated injection of PEGylated liposome induced the formation of anti-PEG IgM and activated the complement system. Activated C3 fragments (iC3b) led to opsonization and enhanced uptake of PEGylated liposomes by Kupffer cells in the liver [20]. In our study, we found the pre- α PEG Abs reduced the tumor accumulation of Lipo-DIR in endo α PEG mice. The biodistribution of ^{111}In -labeled LipoDox in endo α PEG mice was 9.86-fold less in the blood, 10.2-fold less in the tumor region, 2.08-fold more in the spleen and 1.03-fold more in the liver in comparison with the naïve mice at

48 h (Figure 5). We found that most of the ^{111}In -labeled LipoDox was significantly eliminated from the spleen. This may be because the α PEG IgG-LipoDox complex could be recognized by the IgG receptor on red pulp macrophages [21]. Thus, preventing the presence of α PEG Abs would help to maintain the serum half-life and therapeutic efficacy during administration of PEGylated drugs.

The occurrence of pre- α PEG Abs has been found to be increased in naïve healthy blood donors (pre- α PEG Ab) who have never been administered PEGylated drugs or nanocarriers [22]. For instance, Ricardo et al. first reported that occurrence of pre- α PEG Ab in healthy blood donors has increased from 0.2% to 25% over the last two decades [23]. And, a recent study found healthy people have 18% IgG, 25% IgM, and 30% both IgG and IgM pre- α PEG Abs by quantitative competitive ELISA assays [24]. In our previous study, we also found that 1504 healthy donors had 25.7% IgG and 27% IgM pre- α PEG Ab in serum by long exposure with PEG derivatives [25]. pre- α PEG Abs were found in an acute coronary syndrome patient treated with PEGylated coagulation factor IX inhibitor that led to serious life-threatening allergic reactions [12]. PEGylated-uricase [11], -SLN, and -liposomes [13, 14] have also been reported to have reduced serum half-lives or reduced therapeutic efficacy due to induction of α PEG Abs. In this study, we generated an animal model (endo α PEG) to mimic humans who have pre-existing α PEG Abs. We found that the pre- α PEG Abs reduced the therapeutic

efficacy and dramatically accelerated the clearance of LipoDox from the blood *in vivo*, resulting in decreased therapeutic efficacy of LipoDox.

Development of a convenient and specific approach to measure the presence of pre- α PEG Abs may ensure the precise use of PEGylated medicine in the clinic. Richter et al. utilized the hemagglutination assay to measure α PEG Abs in human or rabbit serum. Serum containing α PEG Abs was incubated with mPEG₆₀₀₀-modified fresh red blood cells (RBC) to cause agglutination of the PEG-coated RBCs. They found that rabbit serum treated with PEG-modified enzymes [26] or serum from 0.2% of healthy donors caused agglutination of the PEG-coated RBCs [27]. However, it may be inconvenient to freshly purify RBCs and modify them with PEG. Liu et al. developed a double antigen bridging immunogenicity ELISA to measure the concentration of α PEG Abs from human serum samples. Human serum was incubated with hapten-labeled PEG 40 kDa and then added to the pre-coated PEG 40 kDa plate to form a bridge complex. HRP-labeled anti-hapten antibody was used to detect the α PEG-positive signals. The ELISA identified 15 pre- α PEG Ab-positive human serum samples with 100% accuracy in a total population of 350 naïve donors, indicating that the antigen bridging immunogenicity ELISA assay could rapidly and sensitively detect pre- α PEG Abs in serum [28]. However, the bridging ELISA-based detection system may have the disadvantage of failing to detect low affinity or monovalent antibodies [29]. Zhang et al. developed a sensitive methoxy-PEG5000-coated surface plasmon resonance sensor to measure anti-PEG IgG and IgM antibodies in human serum [30, 31]; however, the high cost of the instrument may limit its wide application. In our study, we developed an α PEG quantitative ELISA system as a simple and sensitive method to measure the concentrations of pre-existing α PEG Abs in serum. The convenient approach can screen and monitor pre- α PEG Abs in serum before administration of LipoDox and may help attain optimal therapeutic efficacy of LipoDox in the clinic.

The specificity and affinity of pre-existing α PEG Abs may influence the therapeutic efficacy or PK of PEGylated drug. For example, Sabine and colleagues immunized mice with carrier-free PEG molecules (40 kDa PEG-Diol) to develop PEG-specific IgM Ab, and the pre-existing α PEG IgM antibodies did not affect the PK of PEG-rASNase MC0609 [32]. In their study, they mention that probably the titer or affinity of these anti-PEG IgM antibodies were too low to influence the pharmacokinetics of PEG-rASNase. In contrast, we immunized mice with PEGylated protein (PEGylated-e β G and -HSA), which lead to

pre-existing α PEG Ab isotype switching from low affinity IgM to higher affinity IgG (Figure 1). The specificity of pre-existing α PEG Abs was analyzed using a LipoDox-based competition ELISA. The result indicated that the therapeutic efficacy of LipoDox was decreased in α PEG-positive CT26 tumor-bearing mice (Figure 6). Taken together, it is important to confirm the isotypes, affinity and specificity of pre-existing α PEG Abs before using PEGylated medicines for effective therapy.

The administration of PEGylated medicines should be personalized in the clinic. Choosing the appropriate PEGylated or non-PEGylated medicine to avoid binding with α PEG Abs could maintain the serum half-life and achieve optimal therapeutic efficacy in disease treatment [22]. Armstrong et al. found that in acute lymphoblastic leukemia patients individually treated with PEGylated or non-PEGylated asparaginase, formation of α PEG Abs was induced in 32% of patients treated with PEGylated asparaginase, resulting in complete loss of enzyme activity. No α PEG Abs were found to reduce the serum ASNase activity in patients treated with unmodified ASNase [33]. Our study found that pre- α PEG Abs reduce the therapeutic efficacy of LipoDox, and tumor volume was significantly increased compared with the naïve group. These results suggest that patients who screen α PEG Ab positive should use a non-PEGylated drug. PEG alternatives such as chitosan, XTEN peptide, poly(carboxybetaine), poly(glycerol) and poly(2-oxazoline) molecules have been used in drug modification, which enhanced serum half-life and had good biocompatibility [34-37]. Development of various kinds of long serum half-life treatments may be warranted for clinical use. The α PEG Ab may act as a marker to help patients choose PEGylated therapies or alternative therapies to achieve optimal therapeutic efficacy.

PEGylation technology is widely used in pharmaceuticals, processed foods and cosmetics in everyday life. These have significantly increased the occurrence of pre- α PEG Ab in naïve donors. A previous study has already proved that pre- α PEG Abs can cause a serious life-threatening allergic reaction in the treatment of acute coronary syndrome by a coagulation factor IX inhibitor, Pegnivacogin [12]. In the current study, we proved that the pre- α PEG Ab could alter the PK and reduce the accumulation and therapeutic efficacy of LipoDox *in vivo*. These results reveal that determining the pre- α PEG Ab and avoiding drug contact with pre- α PEG Abs is important before using LipoDox; this point should be carefully considered to prevent the influence of pre- α PEG Abs in the development of novel

liposomal-based drug carriers. Further, using drugs modified with PEG alternatives will prevent recognition by pre- α PEG Abs. Accurate measurement of the existence of α PEG Abs may aid the development of personal therapy using LipoDox or other PEGylated agents in the clinic in the future.

Abbreviations

pre- α PEG Ab: pre-existing anti-PEG antibodies; endo α PEG: endogenous α PEG Ab titer; α PEG-PT: α PEG Abs were passively transferred; AUC: under the curve; PK: pharmacokinetics; PEG: polyethylene glycol; EPR: permeability and retention; e β G: β -glucuronidase from *Escherichia coli*; HSA: human serum albumin; α PEG-PT-5h: α PEG Ab at 5 h post-inoculation; RBC: red blood cells.

Supplementary Material

Supplementary figures and tables.

<http://www.thno.org/v08p3164s1.pdf>

Acknowledgements

This work was supported by grants from the Ministry of Science and Technology, Taiwan (MOST 106-2632-B-037-003, MOST 106-2320-B-041-001, MOST106-2314-B-037-019, MOST106-2311-B-037-001-MY2 and MOST 107-2321-B-037-003); the National Health Research Institutes, Taiwan (NHRI-EX107-10729EI); Academia Sinica, Taiwan (AS-107-TP-B11); the Program for Translational Innovation of Biopharmaceutical Development - Technology Supporting Platform Axis (Grant No. 107-0210-01-19-04), Academia Sinica, Taiwan; the Grant of Biosignature in Colorectal Cancers, Academia Sinica, Taiwan; the KMU-KMUH Co-Project of Key Research (KMU-DK107001) from Kaohsiung Medical University, Taiwan; and the Center for Biomarkers and Biotech Drugs, Kaohsiung Medical University, Taiwan. The funders had no role in the study design, data collection and analysis, decision to publish, or preparation of the manuscript. The authors declare no competing financial interest.

Author contributions

YC Hsieh, BM Chen, SR Roffler and TL Cheng design the ELISA system (Figure 1-2). YC Hsieh, YC Su, TC Cheng, and WW Lin prepared Figure 4. YC Hsieh, HE Wang, JJ Li, CH Huang and FM Chen prepared Figure 3 and Figure 5. YC Hsieh, JY Wang and JJ Li prepared Figure 6. YC Hsieh, CC Chen and HE Wang helped in data analysis. YC Hsieh, FM Cheng, WW Lin and TL Cheng writing, review, and/or revision of the manuscript. YC Hsieh and HE Wang contributed equally to this work.

Competing Interests

The authors have declared that no competing interest exists.

References

- Koning GA, Morselt HW, Kamps JA, Scherphof GL. Uptake and intracellular processing of PEG-liposomes and PEG-immunoliposomes by kupffer cells *in vitro* 1 *. J Liposome Res. 2001; 11: 195-209.
- Hume DA, Ross IL, Himes SR, Sasmono RT, Wells CA, Ravasi T. The mononuclear phagocyte system revisited. J Leukoc Biol. 2002; 72: 621-7.
- Gabizon AA, Patil Y, La-Beck NM. New insights and evolving role of pegylated liposomal doxorubicin in cancer therapy. Drug Resist Updat. 2016; 29: 90-106.
- Lao J, Madani J, Puertolas T, Alvarez M, Hernandez A, Pazo-Cid R, et al. Liposomal Doxorubicin in the treatment of breast cancer patients: a review. J Drug Deliv. 2013; 2013: 456409.
- Poizot-Martin I, Giovannini M, Rosello R, Viallat JR, Saunier JF, Dalmas AM, et al. Liposomal-doxorubicin in human immunodeficiency virus-associated Kaposi's sarcoma. J Clin Oncol. 1994; 12: 645.
- Ahn HK, Jung M, Sym SJ, Shin DB, Kang SM, Kyung SY, et al. A phase II trial of Cremophor EL-free paclitaxel (Genexol-PM) and gemcitabine in patients with advanced non-small cell lung cancer. Cancer Chemother Pharmacol. 2014; 74: 277-82.
- Lee KS, Chung HC, Im SA, Park YH, Kim CS, Kim SB, et al. Multicenter phase II trial of Genexol-PM, a Cremophor-free, polymeric micelle formulation of paclitaxel, in patients with metastatic breast cancer. Breast Cancer Res Treat. 2008; 108: 241-50.
- Sanchez-Fructuoso A, Guirado L, Ruiz JC, Torregrosa V, Gonzalez E, Suarez ML, et al. Anemia control in kidney transplant patients treated with methoxy polyethylene glycol-epoetin beta (mircera): the Anemiatrans Group. Transplant Proc. 2010; 42: 2931-4.
- Zeuzem S, Diago M, Gane E, Reddy KR, Pockros P, Prati D, et al. Peginterferon alfa-2a (40 kilodaltons) and ribavirin in patients with chronic hepatitis C and normal aminotransferase levels. Gastroenterology. 2004; 127: 1724-32.
- Glue P, Fang JW, Rouzier-Panis R, Raffanel C, Sabo R, Gupta SK, et al. Pegylated interferon-alpha2b: pharmacokinetics, pharmacodynamics, safety, and preliminary efficacy data. Hepatitis C Intervention Therapy Group. Clin Pharmacol Ther. 2000; 68: 556-67.
- Ganson NJ, Kelly SJ, Scarlett E, Sundry JS, Hershfield MS. Control of hyperuricemia in subjects with refractory gout, and induction of antibody against poly(ethylene glycol) (PEG), in a phase I trial of subcutaneous PEGylated urate oxidase. Arthritis Res Ther. 2006; 8: R12.
- Ganson NJ, Povsic TJ, Sullenger BA, Alexander JH, Zelenkofske SL, Sailstad JM, et al. Pre-existing anti-polyethylene glycol antibody linked to first-exposure allergic reactions to pegnivacogin, a PEGylated RNA aptamer. J Allergy Clin Immunol. 2016; 137(e7): 1610-3.
- Zhao Y, Wang L, Yan M, Ma Y, Zang G, She Z, et al. Repeated injection of PEGylated solid lipid nanoparticles induces accelerated blood clearance in mice and beagles. Int J Nanomedicine. 2012; 7: 2891-900.
- Wang X, Ishida T, Kiwada H. Anti-PEG IgM elicited by injection of liposomes is involved in the enhanced blood clearance of a subsequent dose of PEGylated liposomes. J Control Release. 2007; 119: 236-44.
- Lin WW, Hsieh YC, Cheng YA, Chuang KH, Huang CC, Chuang CH, et al. Optimization of an anti-poly(ethylene glycol) (anti-PEG) cell-based capture system to quantify PEG and PEGylated molecules. Anal Chem. 2016; 88: 12371-9.
- Su YC, Chen BM, Chuang KH, Cheng TL, Roffler SR. Sensitive quantification of PEGylated compounds by second-generation anti-poly(ethylene glycol) monoclonal antibodies. Bioconjug Chem. 2010; 21: 1264-70.
- Lin YY, Kao HW, Li JJ, Hwang JJ, Tseng YL, Lin WJ, et al. Tumor burden talks in cancer treatment with PEGylated liposomal drugs. PLoS One. 2013; 8: e63078.
- Lin YY, Li JJ, Chang CH, Lu YC, Hwang JJ, Tseng YL, et al. Evaluation of pharmacokinetics of ¹¹¹In-labeled VNB-PEGylated liposomes after intraperitoneal and intravenous administration in a tumor/ascites mouse model. Cancer Biother Radiopharm. 2009; 24: 453-60.
- Leenaars M, Hendriksen CF. Critical steps in the production of polyclonal and monoclonal antibodies: evaluation and recommendations. ILAR J. 2005; 46: 269-79.
- Ishida T, Kashima S, Kiwada H. The contribution of phagocytic activity of liver macrophages to the accelerated blood clearance (ABC) phenomenon of PEGylated liposomes in rats. J Control Release. 2008; 126: 162-5.
- Nusrat AR, Wright SD, Aderem AA, Steinman RM, Cohn ZA. Properties of isolated red pulp macrophages from mouse spleen. J Exp Med. 1988; 168: 1505-10.
- Zhang P, Sun F, Liu S, Jiang S. Anti-PEG antibodies in the clinic: Current issues and beyond PEGylation. J Control Release. 2016; 244: 184-93.
- Garay RP, El-Gewely R, Armstrong JK, Garratty G, Richette P. Antibodies against polyethylene glycol in healthy subjects and in patients treated with PEG-conjugated agents. Expert Opin Drug Deliv. 2012; 9: 1319-23.

24. Yang Q, Jacobs TM, McCallen JD, Moore DT, Huckaby JT, Edelstein JN, et al. Analysis of pre-existing IgG and IgM antibodies against polyethylene glycol (PEG) in the general population. *Anal Chem.* 2016; 88: 11804-12.
25. Chen BM, Su YC, Chang CJ, Burnouf PA, Chuang KH, Chen CH, et al. Measurement of pre-existing IgG and IgM antibodies against polyethylene glycol in healthy individuals. *Anal Chem.* 2016; 88: 10661-6.
26. Richter AW, Akerblom E. Antibodies against polyethylene glycol produced in animals by immunization with monomethoxy polyethylene glycol modified proteins. *Int Arch Allergy Appl Immunol.* 1983; 70: 124-31.
27. Richter AW, Akerblom E. Polyethylene glycol reactive antibodies in man: titer distribution in allergic patients treated with monomethoxy polyethylene glycol modified allergens or placebo, and in healthy blood donors. *Int Arch Allergy Appl Immunol.* 1984; 74: 36-9.
28. Liu Y, Reidler H, Pan J, Milunic D, Qin D, Chen D, et al. A double antigen bridging immunogenicity ELISA for the detection of antibodies to polyethylene glycol polymers. *J Pharmacol Toxicol Methods.* 2011; 64: 238-45.
29. Wadhwa M, Knezevic I, Kang HN, Thorpe R. Immunogenicity assessment of biotherapeutic products: An overview of assays and their utility. *Biologicals.* 2015; 43: 298-306.
30. Zhang P, Sun F, Hung HC, Jain P, Leger KJ, Jiang S. Sensitive and quantitative detection of anti-poly(ethylene glycol) (PEG) antibodies by methoxy-PEG-coated surface plasmon resonance sensors. *Anal Chem.* 2017; 89: 8217-22.
31. Zhang P, Sun F, Tsao C, Liu S, Jain P, Sinclair A, et al. Zwitterionic gel encapsulation promotes protein stability, enhances pharmacokinetics, and reduces immunogenicity. *Proc Natl Acad Sci USA.* 2015; 112: 12046-51.
32. Poppenborg SM, Wittmann J, Walther W, Brandenburg G, Kraemer R, Baumgart J, et al. Impact of anti-PEG IgM antibodies on the pharmacokinetics of pegylated asparaginase preparations in mice. *Eur J Pharm Sci.* 2016; 91: 122-30.
33. Armstrong JK, Hempel G, Koling S, Chan LS, Fisher T, Meiselman HJ, et al. Antibody against poly(ethylene glycol) adversely affects PEG-asparaginase therapy in acute lymphoblastic leukemia patients. *Cancer.* 2007; 110: 103-11.
34. Knop K, Hoogenboom R, Fischer D, Schubert US. Poly(ethylene glycol) in drug delivery: pros and cons as well as potential alternatives. *Angew Chem Int Ed Engl.* 2010; 49: 6288-308.
35. Cavadas M, Gonzalez-Fernandez A, Franco R. Pathogen-mimetic stealth nanocarriers for drug delivery: a future possibility. *Nanomedicine.* 2011; 7: 730-43.
36. Abu Lila AS, Nawata K, Shimizu T, Ishida T, Kiwada H. Use of polyglycerol (PG), instead of polyethylene glycol (PEG), prevents induction of the accelerated blood clearance phenomenon against long-circulating liposomes upon repeated administration. *Int J Pharm.* 2013; 456: 235-42.
37. Ishihara T, Maeda T, Sakamoto H, Takasaki N, Shigyo M, Ishida T, et al. Evasion of the accelerated blood clearance phenomenon by coating of nanoparticles with various hydrophilic polymers. *Biomacromolecules.* 2010; 11: 2700-6.