

## ORIGINAL ARTICLE

# Socioeconomic Status and Reading Disability: Neuroanatomy and Plasticity in Response to Intervention

Rachel R. Romeo<sup>1,2,†</sup>, Joanna A. Christodoulou<sup>2,3,4,†</sup>, Kelly K. Halverson<sup>2</sup>, Jack Murtagh<sup>2</sup>, Abigail B. Cyr<sup>2</sup>, Carly Schimmel<sup>2</sup>, Patricia Chang<sup>2</sup>, Pamela E. Hook<sup>3</sup> and John D.E. Gabrieli<sup>2,4,5</sup>

<sup>1</sup>Division of Medical Sciences, Harvard Medical School and Harvard University, Boston, MA 02115, USA,

<sup>2</sup>McGovern Institute for Brain Research and Department of Brain and Cognitive Sciences, Massachusetts

Institute of Technology, Cambridge, MA 02139, USA, <sup>3</sup>Department of Communication Sciences and Disorders,

MGH Institute of Health Professions, Boston, MA 02129, USA, <sup>4</sup>Harvard Graduate School of Education,

Cambridge, MA 02138, USA and <sup>5</sup>MIT Integrated Learning Initiative, Cambridge, MA 02139, USA

<sup>†</sup>Rachel R. Romeo and Joanna A. Christodoulou are contributed equally to this work.

Address correspondence to Rachel Romeo, MIT (Office 46-4037), 43 Vassar Street, Cambridge, MA 02139, USA. Email: rromeo@mit.edu and Joanna Christodoulou, 36 First Avenue, Boston, MA 02129, USA. Email: jchristodoulou@mghihp.edu

## Abstract

Although reading disability (RD) and socioeconomic status (SES) are independently associated with variation in reading ability and brain structure/function, the joint influence of SES and RD on neuroanatomy and/or response to intervention is unknown. In total, 65 children with RD (ages 6–9) with diverse SES were assigned to an intensive, 6-week summer reading intervention ( $n = 40$ ) or to a waiting-list control group ( $n = 25$ ). Before and after, all children completed standardized reading assessments and magnetic resonance imaging to measure cortical thickness. At baseline, higher SES correlated with greater vocabulary and greater cortical thickness in bilateral perisylvian and supramarginal regions—especially in left pars opercularis. Within the intervention group, lower SES was associated with both greater reading improvement and greater cortical thickening across broad, bilateral occipitotemporal and temporoparietal regions following the intervention. Additionally, treatment responders ( $n = 20$ ), compared with treatment nonresponders ( $n = 19$ ), exhibited significantly greater cortical thickening within similar regions. The waiting control and nonresponder groups exhibited developmentally typical, nonsignificant cortical thinning during this time period. These findings indicate that effective summer reading intervention is coupled with cortical growth, and is especially beneficial for children with RD who come from lower-SES home environments.

**Key words:** cortical thickness, dyslexia, longitudinal, neuroimaging, SES

## Introduction

Reading is the bedrock of early education, and difficulty in reading has widespread and long-term consequences. Two major factors associated with difficulty in learning to read are

reading disability (RD) and socioeconomic status (SES). RD is the most prevalent type of learning disability (Shaywitz et al. 2008), and is estimated to affect about 10% of school-age children (Shaywitz 1998). Developmental dyslexia describes

children with RD who demonstrate difficulty with single word reading accuracy or fluency in the context of intact cognitive skills and adequate educational opportunity (Lyon et al. 2003). SES is a common conceptualization of the social and economic status of an individual or group that is often measured by some combination of parental educational attainment, income, and occupation. Higher SES is associated with better reading outcomes (Peterson and Pennington 2015), but unlike RD, SES is associated with environmental factors such as home language environment (Hoff et al. 2002) and quality of school instruction (Lee and Burkam 2002). Here we asked whether there are neuroanatomical brain differences in young children (ages 6–9) with RD from varying SES backgrounds, and whether a reading intervention yields similar or dissimilar reading benefits and brain plasticity in children across the SES continuum.

Neuroimaging studies of children and adults with RD have revealed both structural and functional differences as compared with typical readers (Norton et al. 2015). Structurally, RD is typically associated with cortical gray matter reductions in bilateral temporoparietal regions underlying phonological processing (Brown et al. 2001; Eckert 2004; Silani et al. 2005; Vinckenbosch et al. 2005; Hoeft et al. 2007) and left occipitotemporal regions underlying visual whole-word recognition (Eckert 2004; Silani et al. 2005; Kronbichler et al. 2008; Steinbrink et al. 2008), as well as parts of the cerebellum bilaterally (Brown et al. 2001; Eckert et al. 2003; Brambati et al. 2004; Kronbichler et al. 2008; for meta-analyses, see Linkersdörfer et al. 2012; Richlan et al. 2013). These gray matter disparities are evident even in young children with a family history of dyslexia who have yet to learn how to read (Raschle et al. 2011), suggesting that these differences are not purely a consequence of reading difficulty. Some studies have found additional gray matter reductions in canonical language regions, including left inferior frontal cortex (including Broca's area) and left superior temporal cortex (including Wernicke's area) in both children with RD (Eckert et al. 2003; Hoeft et al. 2007) and adults with RD (Brown et al. 2001; Brambati et al. 2004; Steinbrink et al. 2008). These neuroanatomical differences in left-hemisphere language areas are consistent with evidence that a weakness in a specific component of language, namely some aspects of phonological processing, is one of the most common prereading predictors and continuing correlates of RD (Melby-Lervåg et al. 2012).

There is also evidence for brain plasticity following intervention in both children and adults with RD. Most neuroimaging studies examining intervention-induced plasticity have measured functional changes, and often report normalization of preintervention hypoactivation in left-hemisphere regions associated with reading and language, as well as increased activation in right-hemisphere homologues interpreted as compensatory plasticity (Gabrieli et al. 2010; Barquero et al. 2014). The 2 studies examining intervention-induced structural plasticity have reported bilateral changes in the hippocampal region, left precuneus, and right cerebellum (Krafnick et al. 2011) and in white-matter microstructure of the left anterior centrum semiovale that correlated with improvement in phonological decoding ability (Keller and Just 2009).

SES is also strongly associated with reading skill (White 1982; Bowey 1995; Hecht et al. 2000). The disproportionate influence of SES on reading and language skills, as compared with other cognitive domains (Farah et al. 2006; Noble et al. 2005, 2007), is thought to arise from variation in the quantity and complexity of early language exposure (Hoff 2006; Perkins et al. 2013; Schwab and Lew-Williams 2016). SES-related differences in brain structure are evident as early as 1 month of age

(Betancourt et al. 2016), and appear to increase with age (Noble et al. 2012; Hanson et al. 2013). Specifically, lower SES is correlated with reduced activation in left perisylvian regions during language-related tasks (Raizada et al. 2008) and reduced gray matter in both left perisylvian regions (Noble et al. 2012, 2015) and bilateral occipitotemporal regions (Jednorog et al. 2012; Mackey et al. 2015), among many other regions (Brito and Noble 2014).

Although separate lines of evidence have revealed neuroanatomical differences in left-hemisphere language areas in relation to RD and SES, these 2 lines of evidence have yet to be integrated. This is an important gap in knowledge to address, because children from lower-SES backgrounds disproportionately meet RD criteria (Peterson and Pennington 2015) and are diagnosed with specific learning disabilities at significantly higher rates than children from higher SES backgrounds (Shiffrer et al. 2011). In 2015, fourth and eighth grade students eligible for the National School Lunch Program (indicating low family income) were 2.5 times more likely to read at a "below proficient" level than students from higher-income families (U.S. Department of Education 2015). This may be related to gene  $\times$  environment interactions, such that a genetic risk for RD is amplified by decreased access to reading/literary resources in lower-SES environments (Mascheretti et al. 2013), and/or that potentially typical-readers are not achieving their potential due to decreased resources (Friend et al. 2008). Therefore, it is important to understand whether RD arises from similar brain differences and responds similarly or differently to interventions for lower- and higher-SES students.

There are currently no studies examining RD and SES interactions in regard to brain structure, but 2 functional magnetic resonance imaging (fMRI) studies examining this interaction have yielded conflicting results. One study investigated the effects of SES on the relationship between phonological awareness, word decoding, and brain activation in children (Noble et al. 2006). Participants (6–9 years old) were recruited based on a history of reading difficulty and, on average, scored in the low- to below-average range on standardized assessments of pseudoword reading skills and phonological awareness. Among children with the lowest phonological awareness scores, higher-SES children exhibited an increased response, versus lower-SES children, in left fusiform and perisylvian regions while viewing pseudowords versus a fixation cross (Noble et al. 2006). The other study investigated the effects of SES on brain activation while both typical readers and children with a diagnosis of dyslexia (8–10 years old) viewed words (vs. houses, faces, checkerboard, and blank screen) and listened to speech (vs. foreign language and silence) (Monzalvo et al. 2012). Although there were SES-related activation differences for the speech task in right-hemisphere perisylvian regions, there were no SES-related differences during the visual word task (Monzalvo et al. 2012). These 2 functional studies reached conflicting conclusions about the relation between SES and functional activation in response to print, which could be explained by any number of methodological differences, including language (English vs. French), participant age (6–9 vs. 8–10 years), sample size (38 vs. 23 noncontrol children), inclusion criteria (history of reading difficulty vs. externally diagnosed dyslexia), SES measurement (continuous variable based on parental education, occupation, income-to-needs ratio vs. categorical variable based on school districts), and/or print stimuli (pseudowords vs. short familiar real words).

The most important goal of understanding RD is to help people overcome reading difficulties, to the extent possible, through educational intervention. Although SES is relatively

easy to measure and known to be associated with reading skill, very few studies have asked whether participant response to an intervention varies in relation to SES. A review of 14 studies reported behavioral factors predicting responsiveness to literacy interventions (Lam and McMaster 2014). Although the majority of studies collected some sort of SES information, only 4 studies analyzed SES as a predictive factor; of these, 2 found that higher SES predicted better treatment response on reading outcome measures (Hatcher et al. 2006; Morris et al. 2012). The other studies either treated SES as a nuisance variable or as a descriptive characterization of their overall sample. Similarly, neuroimaging studies examining brain plasticity associated with intervention rarely consider the SES of participants. In a review of functional neuroimaging studies of reading interventions (Barquero et al. 2014), only 4 of 22 studies reported participant SES information. Of these, only one study (Bach et al. 2013) examined the relationship between SES and intervention outcomes, albeit only in behavioral outcomes. Although this specific study of Swiss-German children did not reveal SES as predictive of intervention efficacy, relationships between SES and academic achievement appear to be stronger in individuals from the United States (Tucker-Drob and Bates 2016), potentially due to greater SES variability in educational quality in the United States. Given how strong the effects of US SES are on both children's reading ability and their neural architecture, it may be that SES is related to behavioral and neuroanatomical intervention response sensitivity in US children.

In the present study, we recruited young children with RD from a broad SES range and assigned them either to an intensive reading intervention during the school summer break or to a waiting-list control group. First, we asked whether cortical thickness varied by SES at baseline, because it is unknown whether there is such a relation between RD and SES neuroanatomically. Based on the literature linking SES to brain structure in typically developing children (Brito and Noble 2014), we hypothesized that higher-SES children with RD would exhibit thicker cortex, especially in inferior frontal and posterior temporal regions canonically associated with language and reading. Second, we asked whether SES was related to intervention efficacy in relation to reading outcomes and structural brain plasticity. While there is some evidence of structural brain plasticity associated with reading intervention (Keller and Just 2009; Krafnick et al. 2011), the specific effect on cortical thickness and the relations of plasticity to SES and treatment response are unknown. Behaviorally, we hypothesized that higher-SES children would respond more positively to the intervention, based on previous intervention response findings (Torgesen et al. 1999; Hatcher et al. 2006; Morris et al. 2012). Furthermore, we predicted that the children who exhibited greater behavioral improvement would also exhibit greater gains in cortical thickness.

## Materials and Methods

### Participants

Children ( $n = 65$ , 22 females) with RD who were between the ages of 6 and 9 years ( $M = 7.75$  years,  $SD = 0.64$  years) and completing grade one or 2 were recruited from communities in an SES-diverse Northeast region around a major urban center. Specifically, children were recruited both from the community at-large ( $n = 50$ ) and from a local partner school ( $n = 15$ ), which was an SES-diverse urban charter school.

Inclusion criteria required participants to have a history of reading difficulty based on parental report, a current demonstration of

reading difficulty, and no neurological or psychiatric impairments or associated medications with the exception of attention deficit hyperactivity disorder (ADHD). Eleven children carried a diagnosis of ADHD, a disorder highly comorbid with RD (Germano et al. 2010), and 6 of these children received daily medication. However, they did not differ from the remaining participants on any behavioral measures or demographic variables (all  $P > 0.13$ ), so all 11 were included in the final sample. Additionally, all participants were native English speakers, although 6 participants were simultaneous bilinguals (natively acquired English and another language from birth), and 5 others had exposure to a second language outside of typical foreign language class at school. There was no relationship between bilingualism and any demographic variable, assessment score, group assignment, or intervention response (all  $P > 0.05$ ). Behavioral findings from a subset of these children ( $n = 47$ ) who participated in the first phase of the intervention study were previously reported (Christodoulou et al. 2017). Findings reported here are from all children who participated in the intervention study except for those whose neuroimaging data were problematic (described below). Written informed consent was obtained from parents, and written assent was obtained from all child participants. All procedures were approved by the Institutional Review Board at the Massachusetts Institute of Technology.

### Demographics

Participants' SES was determined by a composite of maternal education and occupational prestige, as calculated by the "Barratt Simplified Measure of Social Status" (BSMSS; Barratt 2006). Maternal factors were chosen because they are the most frequently used SES measure (Ensminger and Fothergill 2003), are considered to have stronger relation than paternal factors to cognitive development in younger children (Mercy and Steelman 1982), and because 13 participants lived in single-mother homes. For the 4 participants whose mothers were full-time homemakers, paternal occupation was substituted and combined with maternal education. The BSMSS scale yields possible scores ranging from 8 (lower SES) to 66 (higher SES); participants' scores ranged from 17 to 66 ( $M = 47.35$ ,  $SD = 11.75$ ). Maternal education and occupation scores were highly correlated (Pearson's  $r = 0.76$ ,  $P < 1^{-12}$ ), supporting their combination into a composite measure. Additionally, 48 participants (74%) optionally reported their annual gross family income, which ranged from \$15 000 to >\$120 000 ( $M = \$77 400$ ,  $SD = \$33 550$ ). Income was highly correlated with maternal education ( $r = 0.53$ ,  $P < 0.001$ ), maternal occupation ( $r = 0.47$ ,  $P < 0.001$ ), and total BSMSS scores ( $r = 0.51$ ,  $P < 0.001$ ); thus, BSMSS scores were judged to be a valid index of SES. Unless otherwise noted, SES was treated as a continuous variable for all analyses.

### Behavioral Assessments

#### Screening Session

Participants were first invited to a screening session, at which they completed a battery of tests. Nonverbal cognition was assessed with the Matrices subtest of the "Kaufman Brief Intelligence Test, 2nd edition" (KBIT-2; Kaufman and Kaufman 2004). Core reading subskills were assessed with the Elision and Nonword Repetition subtests of the "Comprehensive Test of Phonological Processing" (CTOPP; Wagner et al. 1999), and the Objects, Letters, and 2-set Letters and Numbers subtests of the "Rapid Automatized Naming and Rapid Alternating Stimulus Tests" (RAN/RAS; Wolf and Denckla 2005). Reading was assessed by the Oral Reading Fluency subtest of the "Dynamic

Indicators of Basic Early Literacy Skills” (DIBELS; Good and Kaminski 2002).

Participants were included in the final RD sample ( $n = 65$ ) if they (1) scored “At Risk” or “Some Risk” on the DIBELS (Good and Kaminski 2002), a criterion-referenced benchmark assessment ( $n = 56$ ), and/or (2) scored below the 25<sup>th</sup> percentile on at least 3 of 5 phonological processing (CTOPP; Wagner et al. 1999) and rapid naming (RAN/RAS; Wolf and Denckla 2005) subtests—skills that are highly associated with reading ability ( $n = 32$ ). In total, 23 participants met both criteria, and there were no demographic differences between the 2 inclusion criteria (all  $P > 0.23$ ). Additionally, all participants were required to score at or above the 16th percentile on a measure of nonverbal cognitive ability (Matrices subtest, KBIT-2; Kaufman and Kaufman 2004). Overall, 24 participants (37%) possessed an external diagnosis of dyslexia or a reading-based learning disability.

#### Preintervention Characterization

After meeting inclusion criteria, participants completed additional assessments of language skills. Two additional CTOPP subtests (Blending Words and Memory for Digits) were administered to better characterize phonological processing (Wagner et al. 1999). Receptive vocabulary was assessed with the “Peabody Picture Vocabulary Test, 4th edition” (PPVT-4; Dunn and Dunn 2007).

#### Pre- and Postintervention Outcome Measures

Four a priori outcome measures were administered before (pretest) and after (post-test) the intervention/waiting period: untimed word reading [Word Identification subtest (Word ID), “Woodcock Reading Mastery Test, 3rd edition” (WRMT-3); Woodcock 2011], untimed pseudoword reading [Word Attack subtest (Word Attack), WRMT-3; Woodcock 2011], timed word reading [Sight Word Efficiency subtest (SWE), “Test of Word Reading Efficiency, 2nd edition” (TOWRE-2); Torgesen et al. 2012], and timed pseudoword reading [Phonemic Decoding Efficiency subtest (PDE), TOWRE-2; Torgesen et al. 2012]. For all 4 subtests, Form A was administered at pretest, and Form B was administered at post-test to avoid practice/familiarity effects. High alternate form reliability has been reported for standardized tests scores on both the WRMT-3 subtests (Word ID  $r = 0.93$ , Word Attack  $r = 0.76$ ; Woodcock 2011) and the TOWRE-2 subtests (SWE  $r = 0.90$ , PDE  $r = 0.92$ ; Torgesen et al. 2012). Thus we report changes in standard scores, because changes in raw scores are difficult to interpret. The primary outcome measure was a composite reading score obtained by averaging the standard scores from all 4 subtests.

Confirming inclusion criteria from screening, all participants either (1) scored below the 25th percentile on at least 2 of the 4 reading subtests ( $n = 52$ ), and/or (2) possessed a discrepancy of 15 or more standard points between the reading composite score and the nonverbal cognitive ability score ( $n = 43$ ). A total of 30 participants met both descriptions. There were no demographic differences (including age, grade, gender, bilingual status, diagnoses, and SES) between these 2 descriptions (all  $|t| < 1.15$ , all  $\chi^2 < 1.71$ , all  $P > 0.17$ ).

#### Group Assignment

After all pretest assessments were completed, the fifty children recruited from the community at-large were randomly assigned to either receive an intensive summer reading intervention ( $n = 25$ ) or to a waiting-list control group ( $n = 25$ ), who received equal access to services after post-test assessments. For the

intervention-assigned participants in this community sample, intervention was based in Cambridge, MA in dedicated space at MIT (“Site 1”). Children recruited from the local partner school ( $n = 15$ ), were all assigned to the intervention group as a condition of school participation, and instruction was delivered on-site at the school (“Site 2”). The overall intervention group was therefore oversubscribed with 15 nonrandomly assigned students, which allowed for better investigation of individual differences in response to treatment. After pretest, one participant from the community at-large who had been randomly assigned to the intervention did not continue study participation, leaving 39 participants in the intervention group.

Intervention and control groups did not differ significantly on any demographic or assessment measures, including age, grade, gender, portion with comorbid ADHD, bilingualism, SES, nonverbal cognition, vocabulary, and all reading skills (all  $|t| < 0.76$ , all  $\chi^2 < 1.93$ , all  $P > 0.16$ ). Within the full treatment group ( $n = 39$ ), there was a marginal difference in SES by site [ $t(37) = 1.87$ ,  $P = 0.07$ ], which was driven by one outlier from the partner school with an SES 2.6 standard deviations below the sample mean. If excluded, no significant SES difference remained between assignment sites [Site 1  $M = 48$ ,  $SD = 12.6$ , Site 2  $M = 42$ ,  $SD = 11.4$ ,  $t(36) < 1.50$ ,  $P > 0.14$ ]. There were no differences between sites on any other demographics (age, grade, gender, ADHD, bilingualism), pretest reading scores (all  $|t| < 0.26$ , all  $\chi^2 < 0.83$ , all  $P > 0.36$ ), or intervention response (see Results). Thus, participants from both sites who completed the intervention were combined into a single treatment group ( $n = 39$ ).

#### Intervention

The intervention is described in detail in a prior publication (Christodoulou et al. 2017). In brief, intervention participants (at both sites) received an intensive version of the Lindamood-Bell “Seeing Stars: Symbol Imagery for Fluency, Orthography, Sight Words, and Spelling” (Bell 2007) program in small groups (3–5 children) by trained Lindamood-Bell teaching staff. “Seeing Stars” is a multisensory remedial approach with a primary focus on training orthographic and phonological processing to improve reading accuracy, fluency, and comprehension. The program was held 4 h per day, 5 days per week, for 6 weeks during the summer break from school, with a high rate of attendance ( $M = 113$  total hours,  $SD = 7.5$ ). Total number of hours of attendance was not correlated with any demographic variable, intervention site, pretest or post-test assessment score, or treatment response (all  $|r| < 0.23$ , all  $P > 0.20$ ).

#### Neuroimaging Data Acquisition

Participants completed neuroimaging sessions at pretest and post-test. First, children were acclimated to the MRI environment and practiced lying still in a mock MRI scanner. Data were then acquired on a 3 T Siemens MAGNETOM Trio Tim scanner equipped for echo planar imaging (EPI; Siemens, Erlangen, Germany) with a 32-channel phased array head coil. First, an automated scout image was acquired, and shimming procedures were performed to optimize field homogeneity. Then a whole-head, high-resolution T1-weighted multiecho MPRAGE (Van Der Kouwe et al. 2008) structural image was acquired using a protocol optimized for movement-prone pediatric populations (TR = 2530 ms, TE = 1.64 ms, FoV = 220 mm, and flip angle = 7°); yielding 176 slices with 1-mm isotropic resolution (Tisdall et al. 2012). All neuroimaging took place at the Athinoula A. Martinos Imaging Center at the McGovern



Institute for Brain Research, at the Massachusetts Institute of Technology.

### Assessment Timeline

Behavioral testing and MRI scanning took place on 2 separate days to avoid child fatigue. All pretest behavioral assessments occurred within the 5 weeks prior to the start of the intervention ( $M = 18$  days prior to start of intervention,  $SD = 12$  days). Given constraints of MRI availability during early summer, baseline neuroimaging occurred over a longer timespan within the 10 weeks prior to the start of intervention ( $M = 39$  days prior to start of intervention,  $SD = 19$  days). There were no differences in the timing of pretest assessments or scanning between intervention and control groups [ $t(59) = 0.82$ ,  $P > 0.4$ ] nor was there a relationship with any demographic variable (all  $|r| < 0.19$ , all  $P > 0.14$ ). Similarly, all post-test assessments (both behavioral and MRI scanning) occurred within the 6 weeks immediately following the conclusion of the intervention (behavioral:  $M = 15$  days after intervention conclusion,  $SD = 8$  days; MRI:  $M = 11$  days after intervention conclusion,  $SD = 8$  days). The average time difference between pre and post behavioral assessments was 2.16 months ( $SD = 0.32$ ), and the average time difference between pre- and post-MRI scanning was 2.71 months ( $SD = 0.69$ ). Again, there was no relationship between date of post-testing and any demographic variable (all  $|r| < 0.13$ , all  $P > 0.3$ ). Unintentionally, intervention and control groups differed marginally in the timespan between intervention conclusion and post-test MRI scanning [ $t(56) = 1.99$ ,  $P = 0.052$ ], although the average difference between groups was only 4.3 days (intervention group  $M = 11.4$  days after conclusion; control group  $M = 15.7$  days after conclusion), which is a negligible amount of time for confounding cortical changes to occur. However, to ensure correction for potential timing differences, the time interval between intervention conclusion and postscanning was added as a nuisance variable to between group longitudinal cortical thickness analysis, which did not affect results.

### Behavioral Analyses

Change scores were computed individually for each of the 4 assessments chosen a priori as outcome measures. Additionally, a composite change score was computed subtracting the average pretest standard score from the average post-test standard score. Repeated measures ANOVAs were used to determine the group effect of the reading intervention, and multiple regressions were used to determine which participant-level factors were associated with treatment response.

### Structural Image Analyses

T1-weighted images were visually inspected for image quality. Two trained observers, who were blind to participant SES and behavioral measures, rated each image on a scale of 1 (perfect) to 5 (unusable) based on a visual guide of artifacts associated with motion created in-house. If ratings differed, the 2 observers discussed their ratings until a consensus was reached. Three participants were excluded from pretest neuroimaging analyses because of poor image quality (pretest  $n = 62$ ), and 6 additional participants (3 from each assigned group) had unusable images at post-test. The remaining 55 participants [19 waiting control, 36 intervention (18 each treatment responders/nonresponders)] had images of equivalent quality at both time

points, which is necessary for accurate measurement of cortical changes. Quality ratings were not correlated with SES, any behavioral measures, or intervention group (all  $P > 0.2$ ).

Cortical reconstruction was conducted with FreeSurfer Version 5.3.0 (Fischl 2012). First, a semi-automated processing stream (recon-all) with default parameters completed motion and intensity correction, surface-based registration, spatial smoothing, subcortical segmentation, and parcellation of cortical white and gray matter boundaries. Pial and white matter surfaces were then manually edited as needed. An observer blind to participant SES and behavioral measures confirmed the accuracy of the final surfaces.

All T1 images from both time points were resampled to a standard brain (fsaverage) and smoothed with a 10-mm full-width half-maximum kernel. Cortical thickness was defined at each location as the distance between the white and pial surfaces (Dale et al. 1999; Fischl and Dale 2000). To examine cross-sectional differences at the pretest time point, general linear models were constructed to test the whole brain for correlations between cortical thickness and SES, with participant gender and age as nuisance variables. Whole-brain analyses were corrected for multiple comparisons using a Monte Carlo simulation with 10 000 repetitions and Bonferroni adjusted for both hemispheres (cluster-forming  $P < 0.05$ , cluster-wise  $P < 0.05$ ; Hagler et al. 2006). Volumetric analyses were conducted on the 35 parcellations of the Desikan-Killiany Atlas (Desikan et al. 2006) automatically segmented in FreeSurfer. All volumetric analyses were controlled for gender, age, and estimated intracranial volume (ICV; Buckner et al. 2004) and Bonferroni-corrected for multiple comparisons.

Both T1 images from all participants with 2 usable images were processed with FreeSurfer's longitudinal stream (Reuter et al. 2012). This process estimates average participant anatomy by creating an unbiased within-participant template space (Reuter and Fischl 2011) using a robust, inverse consistent registration (Reuter et al. 2010). After all templates were manually edited and checked (as above), information from both the templates and individual T1 images were combined to calculate longitudinal changes in individual anatomy, and surfaces were again resampled to a standard brain and smoothed with a 10-mm full-width half-maximum kernel. General linear models were constructed with symmetrized percent change (SPC) as the dependent variable and controlled for gender. SPC is the rate of change at each location with respect to the average thickness across both time points. This approach is more robust than rate of change or simple percent change, which refer to change only in terms of the first measurement. Whole-brain analyses were cluster-corrected for multiple comparisons using a Monte Carlo simulation with 10 000 repetitions and were Bonferroni adjusted for both hemispheres (cluster-forming  $P < .05$ , cluster-wise  $P < .05$ ; Hagler et al. 2006).

## Results

### Relation of SES to Behavioral Measures at Pretest

At pretest, participants scores on tests of phonological awareness, phonological memory, and rapid naming ranged from average to below-average (Table 1). Single word and pseudo-word reading skills clustered at borderline low average to below average scores. Higher SES correlated significantly with higher scores on vocabulary (PPVT-4, Pearson's  $r = 0.37$ ,  $P = 0.002$ ) and marginally with higher nonverbal cognitive ability scores

(KBIT-2,  $r = .023$ ,  $P = 0.065$ ), despite these mean standard scores being within or above the average range. SES was not correlated with scores on any subtests assessing phonological awareness, phonological memory, or rapid naming (all  $|r| < 0.08$ , all  $P > 0.50$ ). Higher SES was only correlated with higher scores on one of the 4 single-word reading subtests (WRMT-3 Word Attack:  $r = 0.26$ ,  $P = 0.036$ ; all other reading subtests  $r < 0.17$ ,  $P > 0.2$ ), and consequently was marginally correlated with higher reading-composite scores ( $r = 0.24$ ,  $P = 0.05$ ). Neither of these SES-reading relationships retained significance when controlling for KBIT-2 scores (both  $r < 0.2$ , both  $P > 0.1$ ). In contrast, when controlling for reading scores, SES and vocabulary maintained a relationship as strong as the zero-order correlation ( $r = 0.36$ ,  $P = 0.003$ ).

### Relation of SES to Cortical Thickness and Reading Scores at Pretest

Confirming our hypothesis, higher SES correlated significantly with greater pretest cortical thickness in several clusters spanning both hemispheres (Fig. 1, Table 2). In the left hemisphere, these clusters included parts of (1) pars opercularis (the posterior portion of Broca's area), (2) supramarginal and postcentral regions, and (3) insula, transverse temporal gyrus, and superior and middle temporal regions. In the right hemisphere, significant clusters included (1) middle and superior temporal regions, (2) surpramarginal and postcentral regions, (3) lateral occipital/fusiform regions, and (4) paracentral regions (Supplementary Fig. 1 for scatterplots by region). Nearly identical clusters emerged when additionally controlling for composite reading score. While cortical thickness and SES showed significant associations, cortical thickness was

not correlated with any individual reading assessment scores or the reading composite score.

Although the smallest by area, the left opercular cluster's cortical thickness exhibited the strongest correlation with SES ( $P = 10^{-6}$ ). Using the predefined cortical parcellations, higher SES also correlated significantly with greater volume of the entire left pars opercularis (lpOp, partial  $r = 0.33$ ,  $P = 0.005$ ). Given that SES was also strongly correlated with receptive vocabulary scores, we undertook a mediation analysis (Fig. 2). By adding lpOp to the regression model, the relationship between SES and vocabulary scores was rendered insignificant, indicating a full mediation. To confirm, a bootstrapping method with 10 000 iterations (Hayes 2013) was employed. There was a significant indirect effect of SES on vocabulary score through lpOp volume, (indirect effect = 0.15, bootstrapped 95% CI [0.06, 0.29], indirect/total effect = 0.37). This indicates that the volume of the left pars opercularis could account for 37% of the total effect of SES on vocabulary scores.

### Effect of Remediation Program on Reading Scores

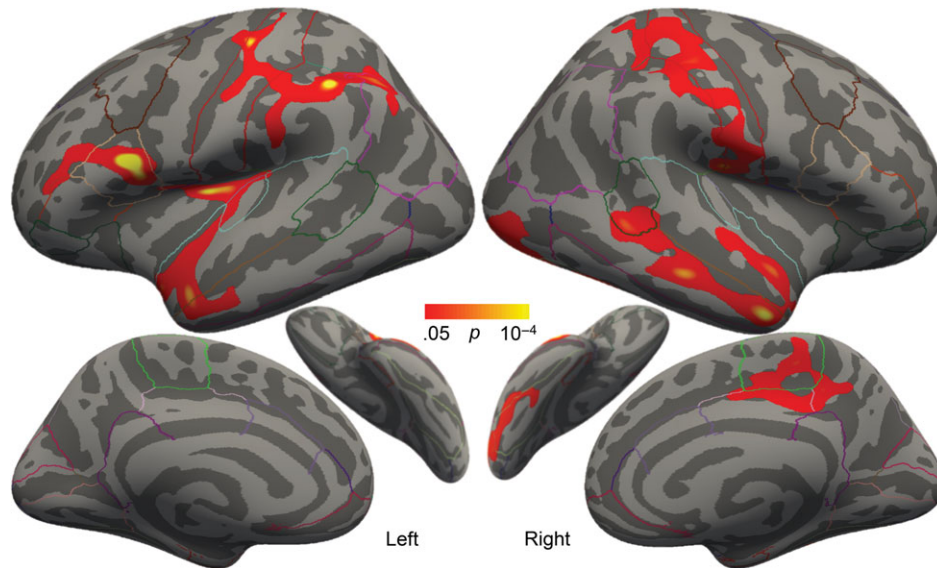
When examining changes on behavioral assessments (i.e., response to intervention), repeated measures ANOVAs revealed group by time-point interactions on the composite reading score ( $F[62,1] = 21.87$ ,  $P < 0.001$ ) and on 3 of the 4 reading subtests (meeting a Bonferroni-adjusted significance criterion), indicating a benefit of the intervention (Table 3 and Fig. 3). These included untimed word reading (WRMT-3 Word Identification,  $F[62,1] = 8.00$ ,  $P = 0.006$ ), untimed pseudoword reading (WRMT-3 Word Attack,  $F[61,1] = 10.97$ ,  $P = 0.002$ ), and timed pseudoword reading (TOWRE-2 Phonemic Decoding Efficiency,  $F[56,1] = 12.27$ ,  $P = 0.001$ ). Post hoc paired t-tests for all significant interactions revealed that children with RD who received intervention

**Table 1** List of standardized assessments administered before intervention, participants' average standard scores, and correlations with SES. Partial correlations between SES and reading scores control for standardized KBIT-2 scores.

| Assessment                           | M (SD)         | Zero-order correlation with SES | Partial correlation with SES |
|--------------------------------------|----------------|---------------------------------|------------------------------|
| Nonverbal cognition                  |                |                                 |                              |
| KBIT-2 matrices                      | 103.09 (14.05) | $r = 0.23^{***}$                | N/A                          |
| Oral language                        |                |                                 |                              |
| PPVT-4 (receptive vocabulary)        | 107.03 (12.50) | $r = 0.37^{**}$                 | $r = 0.32^{**}$              |
| Phonological awareness               |                |                                 |                              |
| CTOPP elision                        | 8.49 (2.02)    | $r = 0.02$                      | $r = -0.02$                  |
| CTOPP blending words                 | 10.12 (2.27)   | $r = -0.08$                     | $r = -0.13$                  |
| Phonological memory                  |                |                                 |                              |
| CTOPP nonword repetition             | 7.92 (1.18)    | $r = -0.02$                     | $r = -0.07$                  |
| CTOPP memory for digits              | 9.23 (2.33)    | $r = 0.05$                      | $r = 0.02$                   |
| Rapid automatized naming             |                |                                 |                              |
| RAN/RAS objects                      | 89.79 (13.65)  | $r = 0.02$                      | $r = 0.07$                   |
| RAN/RAS letters                      | 95.33 (11.49)  | $r = 0.08$                      | $r = 0.09$                   |
| RAN/RAS 2-set letters and numbers    | 96.23 (11.90)  | $r = -0.03$                     | $r = -0.04$                  |
| Single word/nonword reading accuracy |                |                                 |                              |
| WRMT-3 word identification           | 85.11 (9.82)   | $r = 0.13$                      | $r = 0.04$                   |
| WRMT-3 word attack                   | 86.72 (11.69)  | $r = 0.26^*$                    | $r = 0.15$                   |
| Single word/nonword reading fluency  |                |                                 |                              |
| TOWRE-2 sight word efficiency        | 84.54 (10.67)  | $r = 0.09$                      | $r = 0.05$                   |
| TOWRE-2 phonemic decoding efficiency | 80.80 (9.89)   | $r = 0.17$                      | $r = 0.11$                   |
| Reading composite                    | 84.08 (8.71)   | $r = 0.24^{***}$                | $r = 0.19$                   |

Note: All assessments have a mean standard score of 100, with a standard deviation of 15, except CTOPP which has a mean scaled score of 10 and a standard deviation of 3. KBIT-2 = Kaufman Brief Intelligence Test, second edition, PPVT-4 = Peabody Picture Vocabulary Test, fourth edition, CTOPP = Comprehensive Test of Phonological Processing, RAN/RAS = Rapid Automatized Naming and Rapid Alternating Stimulus Tests, WRMT-3 = Woodcock Reading Mastery Test, third edition, TOWRE-2 = Test of Word Reading Efficiency, second edition.

\* $P < 0.05$ , \*\* $P < 0.01$ , \*\*\* $P < 0.01$ .



**Figure 1.** Correlation between SES and cortical thickness, controlling for age and gender. Colored regions exhibited significantly thicker cortex with higher SES at baseline. Outlines represent the cortical parcellations from the Desikan–Killiany gyral-based atlas.

**Table 2** Regions where SES was significantly correlated with cortical thickness, controlling for age and gender

| Region of cluster                      | Approximate Brodmann areas | Area of cluster (mm <sup>2</sup> ) | Peak significance ( $-\log_{10} P$ ) | Peak MNI coordinates |       |       | Cluster-wise P |
|----------------------------------------|----------------------------|------------------------------------|--------------------------------------|----------------------|-------|-------|----------------|
|                                        |                            |                                    |                                      | x                    | y     | z     |                |
| Left pars opercularis                  | 44                         | 916.13                             | 6.262                                | -46.9                | 12.0  | 18.2  | 0.04547        |
| Left supramarginal + postcentral       | 40, 3, 1, 2                | 2581.86                            | 4.782                                | -53.5                | -42.4 | 45.6  | 0.00020        |
| Left insula + superior/middle temporal | 41, 42, 21, 22             | 1710.62                            | 4.056                                | -36.1                | -15.6 | 11.3  | 0.00020        |
| Right middle/superior temporal         | 21, 22                     | 1927.57                            | 4.134                                | 56.0                 | 1.1   | -29.4 | 0.00020        |
| Right supramarginal + postcentral      | 40, 3, 1, 2                | 2486.63                            | 3.388                                | 44.7                 | -17.7 | 20.0  | 0.00020        |
| Right lateral occipital + fusiform     | 18, 19, 37                 | 1526.07                            | 3.042                                | 35.2                 | -80.2 | -12.0 | 0.00080        |
| Right paracentral                      | 4, 3, 1, 2                 | 139 722                            | 2.951                                | 9.4                  | -32.3 | 51.4  | 0.02504        |

Note: MNI = Montreal Neurological Institute.

maintained their scores across time points (all  $P > 0.6$ ), while children with RD in the waiting control group significantly declined (all  $P < 0.001$ ). Both groups declined on the TOWRE-2 Sight Word Efficiency subtest (both  $P < 0.005$ ). Overall, the relative benefit of the intervention was expressed as maintenance of scores for the intervention group relative to a loss of skills for the control group (see Christodoulou et al. 2017 for further information).

#### Differences Between Children Who Responded More or Less to Intervention

To examine variation within the intervention group, we classified participants based on the change in composite scores (Fig. 4). Of the 39 participants who completed the intervention, approximately half had positive composite change scores (“responders”:  $n = 20$ ,  $M = 4.28$ ,  $SD = 3.41$ ), indicating pre-to-post improvement, and half had negative composite change scores (“nonresponders”:  $n = 19$ ,  $M = -4.91$ ,  $SD = 4.74$ ). For

comparison, the waiting control group had a mean change score of  $-6.72$  ( $SD = 4.02$ ). Independent  $t$ -tests revealed that nonresponders did not differ from waiting controls on pre-to-post change scores for the composite or any subtest (all  $P > 0.17$ ), whereas responders differed from both nonresponders and waiting controls on all pre-to-post change scores with exception of the Sight Word Efficiency subtest from the TOWRE-2 (all  $P < 0.006$ ; Table 3 and Fig. 3).

Contrary to our hypothesis, responders had a significantly lower SES ( $M = 39.9$ ,  $SD = 12.7$ ) than nonresponders ( $M = 51.2$ ,  $SD = 11.1$ ;  $t[37] = 2.96$ ,  $P = 0.005$ ; Fig. 5a). When children were divided by median SES, 14 of the 20 responders were in the lower-SES half, and 13 of the 19 nonresponders were in the higher-SES half [ $\chi^2(1, n = 39) = 5.76$ ,  $P = .016$ ]. Treatment response was not significantly related to any other demographic variable, including age, grade, gender, bilingualism, presence of an ADHD diagnosis and/or use of ADHD medication, vocabulary scores, nonverbal cognitive ability scores, hours of intervention attendance, timing of pretest or post-test

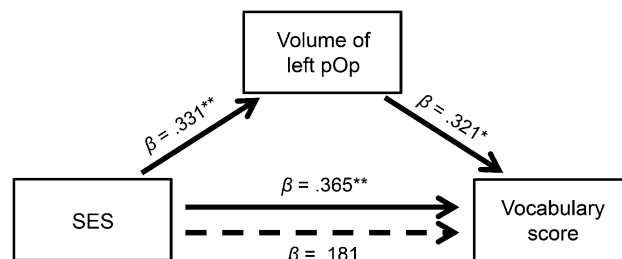
assessments, or whether participants met a low score or discrepancy inclusion criterion (all  $|t| < 1.4$ , all  $P > 0.17$ ).

At baseline, responders also had significantly lower composite reading scores than nonresponders [responders:  $M = 80.28$ ,  $SD = 6.64$ ; nonresponders:  $M = 87.54$ ,  $SD = 10.01$ ;  $t(37) = 2.68$ ,  $P = 0.01$ ]. To control for the effect of baseline scores, a regression analysis was performed to examine the relative relations of all potential predictive variables to intervention response. A model including age, grade, gender, bilingual status, ADHD diagnosis, ADHD medication, which inclusion criterion was met, total hours of intervention attendance, intervention site, SES, and RD severity (reverse of pretest composite score) revealed that only SES and RD severity were significant predictors of binary-coded improvement, with SES explaining 26% of the variance in improvement ( $\beta = -0.019$ ,  $P < 0.003$ ) and RD severity explaining 14% of the variance in improvement ( $\beta = 0.022$ ,  $P < 0.05$ ). Removing all nonsignificant predictors yielded the same pattern (SES:  $\beta = -0.015$ ,  $P = 0.01$ ,  $R^2 = 0.17$ ; RD severity:  $\beta = 0.019$ ,  $P = 0.02$ ,  $R^2 = 0.14$ ), and these results held when using change scores as the dependent variable instead (Fig. 5b; SES:  $\beta = -0.164$ ,  $P = 0.02$ ,  $R^2 = 0.14$ ; RD severity:  $\beta = 0.248$ ,  $P = 0.01$ ,  $R^2 = 0.16$ ). These findings indicate that both more severe RD and

lower SES, 2 risk factors, were independently associated with greater response to intervention.

Analogous results were seen in pre-to-post cortical thickness changes. On average, there were no significant differences in thickness changes between the intervention and waiting control groups. However, there were large differences in thickness changes within the intervention group. Responders exhibited significantly greater thickening than nonresponders bilaterally in several large clusters spanning (1) middle/inferior temporal regions (extending into fusiform region on the right), (2) supramarginal/angular regions, (3) precentral regions, and (4) paracentral/posterior cingulate regions (Fig. 6 and Table 4, see Supplementary Fig. 2 for group differences by region). An additional cluster spanned a large portion of the right superior temporal gyrus extending into insula. The greatest longitudinal between-group difference occurred in the left middle temporal cluster, where responders' cortices thickened by an average of  $31 \mu\text{m}$  per month (1% gain), and nonresponders' cortices thinned by an average of  $11 \mu\text{m}$  per month (0.37% loss). For comparison, the waiting control group on average exhibited  $7 \mu\text{m}$  of thinning per month (0.26% loss) in this region, although this thinning was not statistically significant. There were no clusters in which nonresponders exhibited greater thickening or thinning than the waiting-control group. When the 3 participant groups (responders, nonresponders, and controls) were analyzed separately, responders exhibited significant thickening over most of the cortical surface, whereas nonresponders and controls exhibited no regions of significant thickening or thinning.

Also commensurate with behavioral results, lower SES and greater RD severity were independently correlated with cortical thickening in neighboring but nonoverlapping regions. Lower SES (controlling for RD severity) correlated with greater thickening in the bilateral middle temporal and paracentral/cingulate regions, as well as left precentral and right lateral orbitofrontal/pars opercularis regions (Fig. 7, cool colors and Table 5). Greater RD severity (controlling for SES) correlated with greater thickening in a right lateral occipital cluster (Fig. 7, warm colors and Table 5). To further evaluate whether the apparent neuroanatomical dissociations in cortical thickening related to lower SES and greater RD severity were independent as opposed to being secondary to statistical thresholding, we examined in several main clusters the correlations between



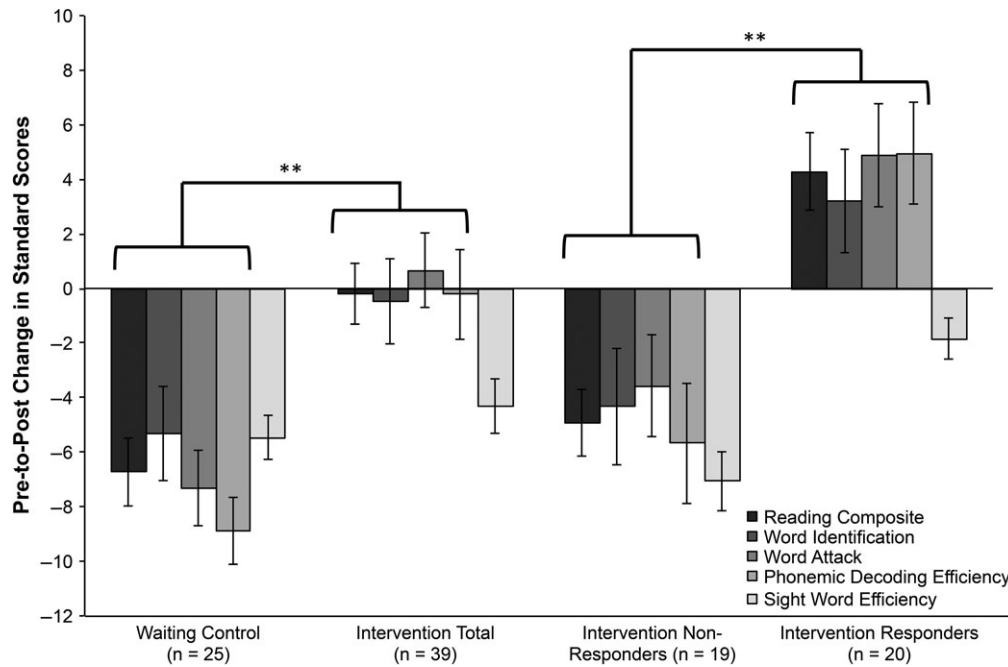
**Figure 2.** Mediation model showing the effect of SES on vocabulary scores as mediated by the volume of the left pars opercularis. Solid arrows represent direct paths, whereas the dotted arrow represents the indirect (mediated) path.  $\beta$  coefficients represent standardized regression coefficients. Each regression controls for participant age and gender, and all models involving the left pars opercularis (lpOp) also control for head size (estimated intracranial volume). Thus, vocabulary is represented by raw scores on the "Peabody Picture Vocabulary Test, 4th edition" (PPVT-4), to avoid adjusting for age twice. \* $P < 0.05$ , \*\* $P < 0.01$ .

**Table 3.** Group means (and standard deviations) of reading assessment standard scores at post-test. All assessments have a mean standard score of 100, with a standard deviation of 15. Change scores are post-test minus pretest scores, averaged across participants, with indicated significance from paired  $t$ -tests. Word Identification and Word Attack are subtests of the "Woodcock Reading Mastery Test, 3rd edition" (WRMT-3). Sight Word Efficiency and Phonemic Decoding Efficiency are subtests of the "Test of Word Reading Efficiency, 2nd edition" (TOWRE-2). Reading Composite is the average of standard scores on all 4 subtests

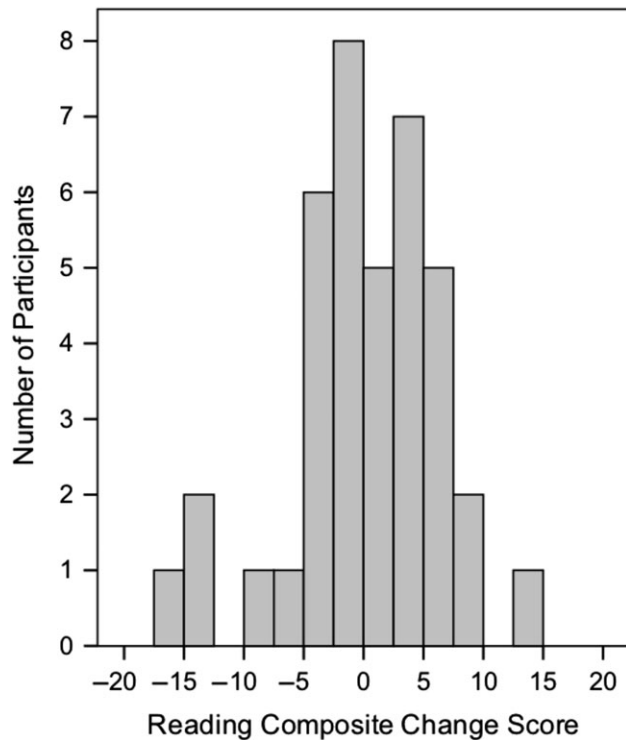
| Post-test assessment   | Waiting control<br>( $n = 25$ ) | Intervention<br>total ( $n = 39$ ) | Intervention<br>nonresponders ( $n = 19$ ) | Intervention<br>responders ( $n = 20$ ) |
|------------------------|---------------------------------|------------------------------------|--------------------------------------------|-----------------------------------------|
| Word identification    | 80.08 (8.22)                    | 84.69 (9.76)                       | 84.32 (10.22)                              | 85.05 (9.55)                            |
| Change score           | -5.32 (6.26)***                 | -0.46 (6.97)                       | -4.32 (5.38)**                             | 3.20 (6.39)*                            |
| Word attack            | 79.96 (9.83)                    | 87.67 (9.79)                       | 87.16 (10.07)                              | 88.15 (9.75)                            |
| Change score           | -7.32 (8.61)***                 | 0.66 (9.81)                        | -3.58 (9.34)                               | 4.89 (8.52)*                            |
| Sight word efficiency  | 79.16 (11.28)                   | 80.34 (12.79)                      | 79.44 (14.09)                              | 81.15 (11.81)                           |
| Change score           | -5.48 (6.88)***                 | -4.32 (8.63)**                     | -7.06 (8.17)**                             | -1.85 (8.48)                            |
| Phonemic decoding eff. | 73.35 (9.36)                    | 79.87 (8.81)                       | 78.44 (9.90)                               | 81.15 (7.73)                            |
| Change score           | -8.90 (6.12)***                 | -0.22 (10.37)                      | -5.67 (9.66)*                              | 4.95 (8.30)*                            |
| Reading composite      | 78.13 (8.53)                    | 83.62 (8.55)                       | 82.63 (9.33)                               | 84.56 (7.86)                            |
| Change score           | -6.72 (4.02)***                 | -0.20 (6.17)                       | -4.91 (4.74)***                            | 4.28 (3.41)***                          |

\* $P < 0.05$ , \*\* $P < 0.01$ , \*\*\* $P < 0.001$ .





**Figure 3.** Pre-to-post changes in standard scores on reading composite and subtests and composite by group. Positive scores indicate a score increase, while negative scores indicate a score decrease. “Intervention Total” combines intervention nonresponders and intervention responders. Reading Composite is the average of standard scores on all 4 subtests. Word Identification and Word Attack are subtests of the “Woodcock Reading Mastery Test, 3rd edition” (WRMT-3). Sight word efficiency and phonemic decoding efficiency are subtests of the “Test of Word Reading Efficiency, 2nd edition” (TOWRE-2). Error bars represent standard errors. \*\*P < 0.01.

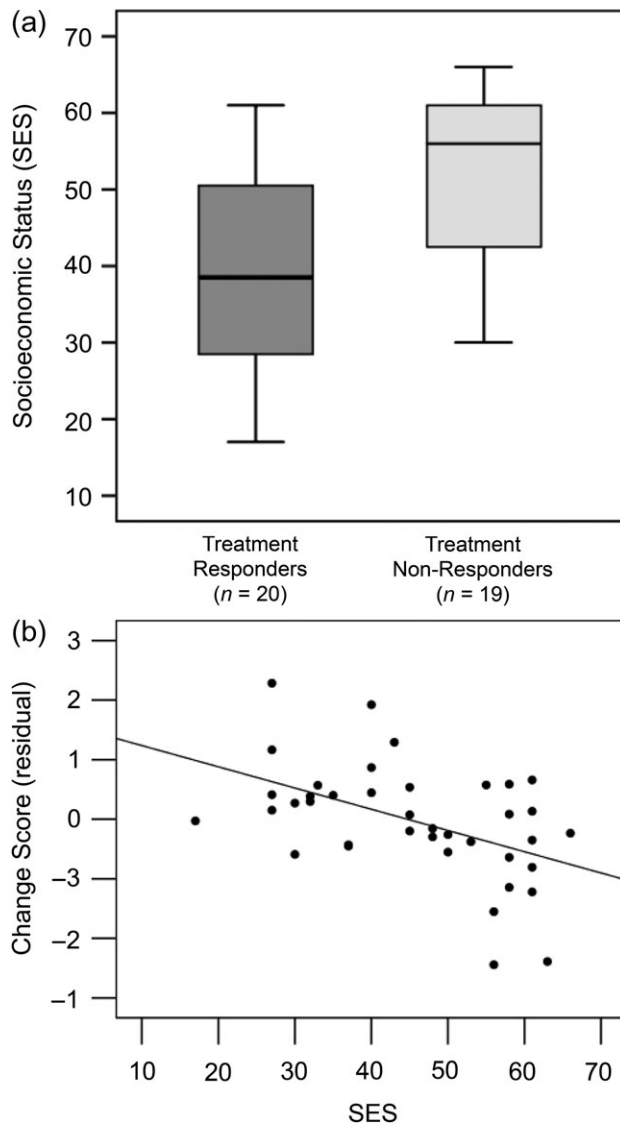


**Figure 4.** Histogram of pre-to-post changes in the composite reading score for all participants in the intervention group only (n = 39). Positive scores indicate a score increase and classification as an intervention “Responder,” while negative scores indicate a score decrease and classification as an intervention “Nonresponder.”

changes in cortical thickness and both baseline SES and RD. These analyses supported the conclusion that regional changes in cortical thickness were related distinctly to either SES or RD (Supplementary Fig. 3). There were no significant correlations between thickness changes and SES or RD severity in the waiting control group.

**Discussion**

The present study yielded 3 novel discoveries about the relations between SES and RD, including behavioral and neuroanatomical responses to reading intervention. First, among a group of children with RD, higher SES was associated with thicker cortex in multiple neocortical regions, including bilateral perisylvian and supramarginal regions associated with language and reading; this extends, for the first time, the well-documented SES–neuroanatomy relationship to children with RD. Moreover, the strongest correlation occurred in Broca’s area in left inferior frontal cortex, the volume of which fully mediated the relationship between SES and vocabulary, commonly known as the “vocabulary gap.” Second, whereas children who did not receive intervention or who did not respond to intervention exhibited no significant cortical changes, children who responded to intervention (i.e., whose reading improved) exhibited pre-to-post thickening of cortex across broad bilateral occipitotemporal and temporoparietal regions, most notably in the middle temporal gyri. Third, children from lower-SES families and children with more severe RD were more likely to benefit from the intervention than children from higher-SES families or children with less severe RD, both behaviorally and neurally.



**Figure 5.** Relation between SES and response to treatment. (a) Boxplot of SES as a factor of treatment response. Intervention response (improvement) was operationalized as a positive change score when averaging standard scores on 4 reading subtests: WRMT-3 Word Identification and Word Attack, and TOWRE-2 Sight Word Efficiency and Phonemic Decoding Efficiency. (b) Partial residual plot showing the amount of improvement (change in composite reading score, controlled for baseline score) as a function of SES.

### Relation of SES, Cortical Thickness, and Vocabulary in Children With RD

In accordance with our hypothesis, higher SES (independent of RD severity) was associated with thicker cortex in bilateral perisylvian and supramarginal regions at pretest, with the strongest association in left pars opercularis (posterior portion of Broca's area). Prior studies have reported similar relations between SES and neuroanatomical characteristics of language cortex in typically developing children (Brito and Noble 2014). However, this is the first study to demonstrate the same relationship among children with RD. The combined influences of RD and lower SES on neuroanatomy may make children especially vulnerable for academic challenges in reading.

Further, there was a strong relation between higher SES and larger vocabulary, a finding consistent with many studies reporting striking relations between SES, home language environment, and vocabulary (Hart and Risley 1995; Hoff 2003; Fernald et al. 2013). The present study offers an initial insight into a brain mechanism that may be involved in the relation of childhood SES to vocabulary, albeit specifically in children with RD. A mediation model revealed that the volume of the left pars opercularis (the posterior portion of the canonical Broca's area) fully mediated the strong correlation between SES and vocabulary size, accounting for over a third of the relation between SES and vocabulary.

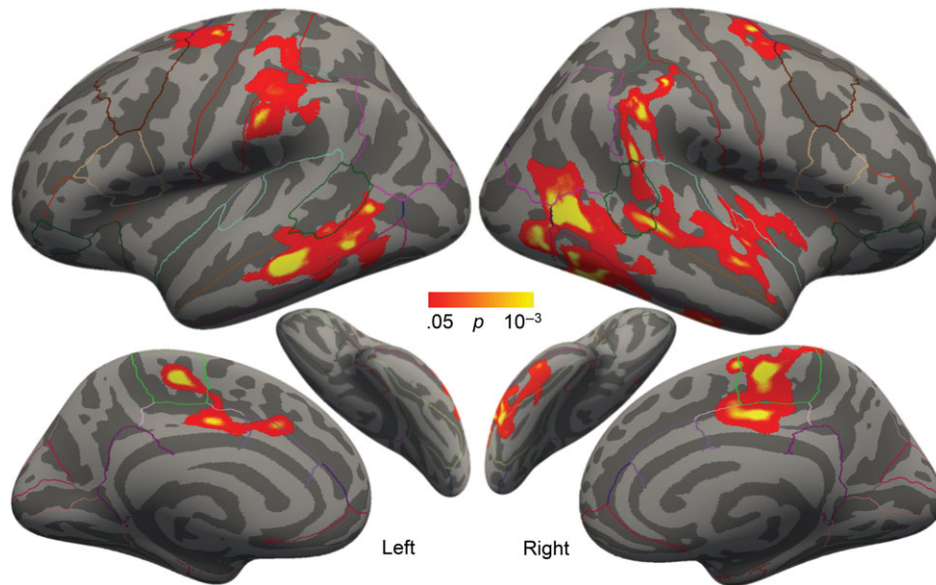
The present findings are consistent with prior evidence associating SES, neuroanatomy, and performance on a measure of verbal academic achievement (Hair et al. 2015). That study reported that lobar gray matter volumes mediated the relation between growing up near or below the federal poverty line and broader linguistic achievement in children and young adults, with frontal-lobe volume explaining 11% of the income-related differences in language scores.

The authors suggested that their results might underestimate the true effects of SES because of strict exclusion criteria that selected for a typical sample of participants and little variation in the other socioeducational domains comprising SES (Hair et al. 2015). Indeed, by defining SES continuously and more broadly within a sample of young children with RD, the present study found that a more specific portion of the left frontal lobe (pars opercularis) explained 37% of the effect of SES on children's vocabulary knowledge. This relation between Broca's area and vocabulary is consistent with the known major role of Broca's area to language development (Hagoort 2005, 2014; Grodzinsky and Santi 2008). This not only proposes a more focal locus for the previous study's whole-brain global effects, but also suggests an even tighter relationship between SES, brain, and achievement in a group of children with RD.

Despite notable SES-related variation in vocabulary and the neural structure of core language regions, there were little SES-related behavioral differences in children's reading profiles, including word and pseudoword reading accuracy and fluency, as well as reading-related phonological processing and rapid naming skills. This may in part reflect a restricted range of poor reading ability for all of the children, who all had to have evidence for substantial RD regardless of SES. The similarity of reading scores across SES makes more salient the differences in vocabulary and in neuroanatomy.

### Individual Differences in Intervention Response and Brain Plasticity

We found considerable variation in response to intervention, with about half of the children with RD exhibiting significant gains in reading after intervention, and about half exhibiting essentially no gains (i.e., they did not differ significantly from the children with RD who received no intervention). Although intervention programs are typically evaluated on the basis of an average, overall response, frequently some portion of children with RD (anywhere from 3% to 80%, depending on response criteria) fail to respond to intervention programs that are effective for other children (Al Otaiba and Fuchs 2002; Nelson et al. 2003; Lam and McMaster 2014). The present finding of 50% nonresponse is consistent with previous studies of similar-age children with persistent reading difficulties (Al Otaiba and Fuchs 2002; Lam and McMaster 2014).



**Figure 6.** Regions where treatment responders exhibited significantly greater cortical thickening versus treatment nonresponders following an intensive summer intervention, controlling for gender. Outlines represent the cortical parcellations from the Desikan-Killiany gyral-based atlas.

**Table 4.** Regions exhibiting significant differences in cortical thickness changes between children whose reading scores improved after intervention versus children whose scores did not improve. Comparisons are controlled for age and gender.

| Region of cluster                         | Approximate Brodmann areas | Area of cluster (mm <sup>2</sup> ) | Peak significance (-log <sub>10</sub> P) | Peak MNI coordinates |       |       | Cluster-wise P |
|-------------------------------------------|----------------------------|------------------------------------|------------------------------------------|----------------------|-------|-------|----------------|
|                                           |                            |                                    |                                          | x                    | y     | z     |                |
| Left middle/inferior temporal             | 21, 37                     | 1548.41                            | 5.359                                    | -60.1                | -29.2 | -12.2 | 0.00020        |
| Left supramarginal                        | 40                         | 1401.52                            | 3.035                                    | -56.3                | -24.6 | 27.5  | 0.00020        |
| Left precentral                           | 4                          | 691.94                             | 3.070                                    | -31.7                | -12.9 | 57.6  | 0.01514        |
| Left paracentral + cingulate              | 4, 3, 1, 2, 31, 24         | 773.27                             | 3.857                                    | -7.5                 | -27.0 | 53.4  | 0.00619        |
| Right middle/inferior temporal + fusiform | 21, 37, 19                 | 3302.67                            | 4.546                                    | 47.8                 | -59.7 | 3.1   | 0.00020        |
| Right supramarginal + angular             | 39, 40                     | 926.53                             | 3.490                                    | 59.0                 | -42.5 | 17.1  | 0.00140        |
| Right superior temporal + insula          | 22                         | 1836.93                            | 3.239                                    | 44.0                 | -33.7 | -0.8  | 0.00020        |
| Right precentral                          | 4                          | 730.29                             | 3.095                                    | 22.1                 | -10.1 | 53.0  | 0.01236        |
| Right paracentral + posterior cingulate   | 4, 3, 1, 2, 31             | 1544.20                            | 4.753                                    | 7.4                  | -20.1 | 56.3  | 0.00020        |

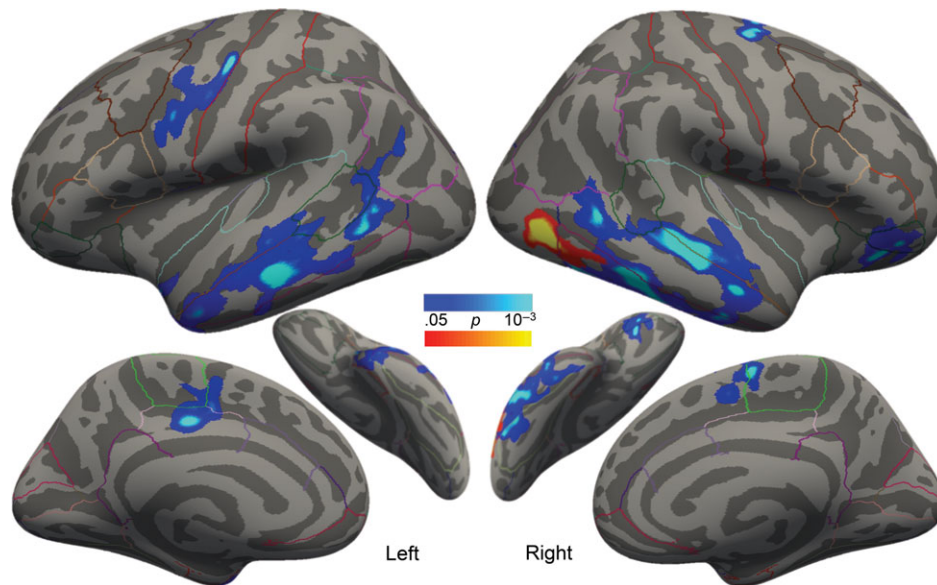
Note: MNI = Montreal Neurological Institute.

There were striking developmental differences in brain plasticity between the children with RD who did respond to the intervention versus the other 2 groups of children with RD who either did not respond to the intervention or who received no intervention. Responders exhibited greater cortical thickening across broad bilateral occipitotemporal and temporoparietal regions. The greatest group difference was evident in the middle temporal gyrus, where responders' cortices thickened by an average of 31  $\mu\text{m}/\text{month}$ , and nonresponders' and waiting controls' cortices thinned by 11 and 7  $\mu\text{m}/\text{month}$ , respectively. For reference, this region thins by an average of 5  $\mu\text{m}/\text{month}$  in typically developing, similarly aged children (Sowell et al. 2004). This suggests that nonresponders and waiting controls exhibited a typical cortical trajectory of developmental thinning during this study, whereas children with RD who responded by improving their reading exhibited a noteworthy thickening of cortex.

Two other studies have examined neuroanatomical plasticity, one in gray matter and one in white matter, following reading intervention with children. Our left hemisphere findings

are consistent with a study that used the same "Seeing Stars" intervention in 11 children ages 7–11 years and found increased gray matter volume in left occipitotemporal and medial parietal regions (Krafnick et al. 2011). Another study reported intervention related changes in white matter microstructure in children ages 8–12 (Keller and Just 2009). A difference between the prior and present studies is that only the present study reports a specific relation between individual differences in treatment response and structural plasticity.

Several prior studies have reported functional brain differences between individuals with RD who did or did not respond to intervention at either a single preintervention (Odegard et al. 2008; Davis et al. 2011; Farris et al. 2011; Molfese et al. 2013) or postintervention time point (Rezaie et al. 2011a, 2011b), although few have reported longitudinal neural changes. One study using magnetic source imaging (MSI) found that responders, but not nonresponders, exhibited increased duration of activity and a shift in activation timing in a broad left temporoparietal region during a phonological decoding task, such that their neural profiles matched typical readers postintervention



**Figure 7.** Regions exhibiting significant correlations between changes in cortical thickness and SES (cool colors) or RD severity (warm colors) among all children who received intervention, controlling for gender. Outlines represent the cortical parcellations from the Desikan–Killiany gyral-based atlas.

**Table 5.** Regions exhibiting significant correlations between changes in cortical thickness and SES (controlling for RD severity and gender) or with RD severity (controlling for SES and gender) among all children who received intervention

| Region of cluster                                 | Approximate Brodmann areas | Area of cluster (mm <sup>2</sup> ) | Peak significance (-log <sub>10</sub> P) | Peak MNI coordinates |       |       | Cluster-wise P |
|---------------------------------------------------|----------------------------|------------------------------------|------------------------------------------|----------------------|-------|-------|----------------|
|                                                   |                            |                                    |                                          | x                    | y     | z     |                |
| Correlation with SES, controlling for RD severity |                            |                                    |                                          |                      |       |       |                |
| Left middle temporal (anterior)                   | 21, 20                     | 2705.29                            | -3.755                                   | -64.5                | -26.4 | -14.8 | 0.00020        |
| Left middle temporal (posterior)                  | 21, 20                     | 623.14                             | -3.311                                   | -60.6                | -54.9 | 0.0   | 0.03017        |
| Left precentral                                   | 4                          | 774.27                             | -3.783                                   | -33.0                | -18.2 | 39.3  | 0.00619        |
| Left posterior cingulate + paracentral            | 31, 4, 5, 3, 1, 2          | 611.57                             | -3.345                                   | -6.4                 | -17.7 | 39.1  | 0.03469        |
| Right middle/superior temporal                    | 21, 22                     | 3913.28                            | -5.150                                   | 52.4                 | -24.5 | -12.8 | 0.00020        |
| Right paracentral                                 | 11, 47                     | 963.37                             | -3.770                                   | 8.4                  | -10.6 | 61.3  | 0.00060        |
| Right lateral orbitofrontal + pars orbitalis      | 4, 3, 1, 2                 | 704.96                             | -3.671                                   | 37.5                 | 30.0  | -14.5 | 0.01732        |
| Correlation with RD severity, controlling for SES |                            |                                    |                                          |                      |       |       |                |
| Right lateral occipital                           | 18, 19                     | 726.64                             | -5.205                                   | 41.2                 | -73.2 | -1.5  | 0.01276        |

Note: MNI = Montreal Neurological Institute.

(Simos et al. 2007). Another study used evoked response potentials (ERPs) during a German phonological lexical decision task to compare functional plasticity between responders and non-responders (Hasko et al. 2014). Treatment responders, but not nonresponders, exhibited an increase in the post-test amplitude of the N400 component, thought to underlie orthographic processing. Although locating the source of ERP components is difficult, the N400 is thought to arise from bilateral superior/middle temporal gyri and temporoparietal regions (Kutas and Federmeier 2011). Thus, the prior functional studies align with the present structural study in suggesting that plasticity in temporoparietal regions distinguishes children with RD who do versus do not respond to specific interventions.

### Relation of SES and RD Severity to Intervention Response and Plasticity

Contrary to our hypotheses, both lower SES and greater RD severity at baseline were independently associated with greater

response to intervention in regard to both reading ability and brain plasticity. Importantly, because analysis models controlled for baseline reading scores, this result cannot solely be attributed to a regression-to-the-mean explanation. SES and RD severity, however, appeared to have differential relations between reading gains and structural plasticity, suggesting that the 2 factors influenced treatment response via cortical growth in different brain regions. Children from lower SES families exhibited greater thickening across broad bilateral occipitotemporal regions, largely corresponding with the left hemisphere reading network and its right hemisphere homologues. Children with more severe RD exhibited greater thickening in a right lateral occipital region that may provide compensatory support for the visual component of reading.

The finding that children with lower SES and more severe RD responded more strongly to this specific intervention is a notable difference from prior studies. Most reading intervention studies examining these factors have largely found that lower-SES children (Torgesen et al. 1999; Hatcher et al. 2006;



Morris et al. 2012) and children with lower word-reading and decoding skills (Hatcher et al. 2006; Vellutino et al. 2007; Compton et al. 2012) tended to exhibit a worse response to interventions. However, these studies largely utilized in-school remediation programs focused on phonological awareness with short instructional sessions distributed across many weeks during the academic year, whereas the present study employed an intensive, short-term intervention with a small teacher to student ratio (1:3–5) during the nonacademic summer.

Several interpretations are possible for the greater effect of the intervention on lower-SES than higher-SES children with RD. One possibility concerns the nature of the present intervention; specifically, the pronounced focus on visual and orthographic imagery. Given that lower-SES, above-average readers exhibit greater white matter tract coherence in the right inferior longitudinal fasciculus (Gullick et al. 2016), which supports visuospatial processing, it is possible that this visual approach stimulated greater neural plasticity in right hemisphere areas, and, in turn, a more positive treatment response. Another possibility is that the combination of intervention intensity, duration, and small group size (all of which predict greater response frequency (Denton 2012), was particularly potent for lower-SES children. A limitation on interpretation of these findings is that the waiting-control group served as a passive control condition, thus precluding the separate effects of intensive, small-group attention and interaction from the specific academic content of the intervention.

In any case, another possible explanation concerns the timing of the intervention. The particular benefits of the reading intervention during summer for the lower-SES children with RD may be related to evidence that lower-SES children in general are vulnerable to academic regression during the summer, a phenomenon known as “summer slump” or “summer slide.” During the summer months, lower-SES students tend to regress in their reading skills, while higher-SES students tend to maintain or gain reading skills (Cooper et al. 1996; McCoach et al. 2006; Alexander et al. 2007). This is frequently attributed to decreased access to books and reduced experiences with or emphasis on literacy in the homes of lower-SES children. Thus it is plausible that the present access to an intensive reading program provided the lower-SES children with precisely the literacy access they would otherwise be missing, and presumably had missed in previous summers.

Finally, the better intervention response for lower-SES participants could be related to variations in RD etiology. Reading deficits can occur for many reasons, and it is possible that the origins of RDs could vary in relation to SES. Differences in environmental factors, such as home literacy, access to reading material, and school quality may be responsible for systematic heterogeneity in the root cause of RD across children from varying SES (Ursache and Noble 2016). Consistent with this possibility is the finding that higher-SES and lower-SES environments interact differently with genetic factors related to RD (Friend et al. 2008; Mascheretti et al. 2013). A large study of twins with reading difficulty revealed differences in the heritability of RD across SES, such that environmental factors accounted for more of the variance in reading deficits in children from lower-SES families than higher-SES families (Friend et al. 2008; but see Kirkpatrick et al. 2011 for conflicting findings). This raises the possibility that the neurobiological bases of RD could vary with SES. In such a case, environmentally driven neurobiological differences in children from lower-SES families may be more amenable to an (environmental) treatment intervention. In contrast, genetically driven neurobiological

differences in children from higher-SES families may be more resistant to treatment intervention. By this view, children with RD of varying SES could respond differently to interventions due to variation in environmental versus genetic contributions to the etiologies of their behaviorally similar RD.

Several limitations of the present study are noted. One limitation involves the nonrandom treatment group assignment of 15 participants, as a condition of school participation. Ideally all participants would have been randomly assigned to the treatment or control group, so that the postintervention response can only be explained by the intervention itself. It is, however, unlikely that alternative participant characteristics (such as school or intervention site) contributed to either between-group or within-group treatment differences, because participants were similar across sites in their demographics, assessment scores, and treatment response. A second limitation is that we lacked information to characterize the quality of school reading instruction for all participants. On average, it is likely that lower-SES children may receive less high-quality instruction in lower performing schools, though this was not evaluated in our current study. In order to promote SES diversity of children in this study, the children attended a wide variety of public, private, and public-charter schools from a large metro region. Future studies may attempt to control for this by enrolling participants from a single school with a SES-diverse population, or characterizing the quality of reading instruction in diverse schools. Third, we could not dissociate potentially separable effects of SES dimensions of parental education, parental occupation, and income on any outcomes. There is evidence for dissociations among these dimensions on both behavioral (Duncan and Magnuson 2012) and neural (Brito and Noble 2014) child outcomes. In our sample, parental education, parental occupation, and parental income were highly correlated, which precluded any dissociations. Future research with larger, more diverse participant samples will be required to untangle these correlated dimensions of SES when considering treatment response in children with RD.

In summary, this study investigated how the brain structure of young students with RD varies by SES, and explored SES-related differences in their behavioral and neural response to intervention. Despite reduced cortical thickness in canonical language regions at baseline, lower-SES children responded more favorably to an intensive summer reading intervention than their higher-SES peers, both in terms of reading scores and structural plasticity throughout the neural reading networks. Taken as a whole, this suggests that intensive summer reading intervention might be even more effective for these dually at-risk children.

## Supplementary Material

Supplementary material is available at *Cerebral Cortex* online.

## Funding

Ellison Medical Foundation (to J.D.E.G.), the Halis Family Foundation (to J.D.E.G.), Lindamood-Bell Learning Processes (which supported the intervention) and the National Institutes of Health (T32-DC000038 and F31-HD086957 to R.R.R.).

## Notes

We thank the participants and their families. We thank the Athinoula A. Martinos Imaging Center at the McGovern

Institute for Brain Research (MIT) and Atshusi Takahashi, Steve Shannon, and Sheeba Arnold for data collection technical support. We thank Allyson Mackey for assistance with cortical thickness analyses, and we thank Camila Caballero for comments on the manuscript. *Conflict of Interest*: None declared.

## References

- Al Otaiba S, Fuchs D. 2002. Characteristics of children who are unresponsive to early literacy intervention: a review of the literature. *Rem Spec Educ.* 23:300–316.
- Alexander KL, Entwisle DR, Linda SO. 2007. Lasting consequences of the summer learning gap. *Am Sociol Rev.* 72: 167–180.
- Bach S, Richardson U, Brandeis D, Martin E, Brem S. 2013. Print-specific multimodal brain activation in kindergarten improves prediction of reading skills in second grade. *Neuroimage.* 82:605–615.
- Barquero LA, Davis N, Cutting LE. 2014. Neuroimaging of reading intervention: a systematic review and activation likelihood estimate meta-analysis. *PLoS One.* 9:e83668.
- Barratt W. 2006. Barratt simplified measure of social status (BSMSS). Indiana State University.
- Bell N. 2007. Seeing stars. San Luis Obispo, CA: Gander.
- Betancourt LM, Avants B, Farah MJ, Brodsky NL, Wu J, Ashtari M, Hurt H. 2016. Effect of socioeconomic status (SES) disparity on neural development in female African-American infants at age 1 month. *Dev Sci.* 19(6):947–956.
- Bowey JA. 1995. Socioeconomic status differences in preschool phonological sensitivity and first-grade reading achievement. *J Educ Psychol.* 87:476–487.
- Brambati SM, Termine C, Ruffino M, Stella G, Fazio F, Cappa SF, Perani D. 2004. Regional reductions of gray matter volume in familial dyslexia. *Neurology.* 63:742–745.
- Brito NH, Noble KG. 2014. Socioeconomic status and structural brain development. *Front Neurosci.* 8:276.
- Brown WE, Eliez S, Menon V, Rumsey JM, White CD, Reiss AL. 2001. Preliminary evidence of widespread morphological variations of the brain in dyslexia. *Neurology.* 56:781–783.
- Buckner RL, Head D, Parker J, Fotenos AF, Marcus D, Morris JC, Snyder AZ. 2004. A unified approach for morphometric and functional data analysis in young, old, and demented adults using automated atlas-based head size normalization: reliability and validation against manual measurement of total intracranial volume. *Neuroimage.* 23:724–38.
- Christodoulou JA, Cyr A, Murtagh J, Chang P, Lin J, Guarino AJ, Hook P, Gabrieli JD. 2017. Impact of intensive summer reading intervention for children with reading disabilities and difficulties in early elementary school. *J Learn Disabil.* 50(2): 115–127.
- Compton DL, Gilbert JK, Jenkins JR, Fuchs D, Fuchs LS, Cho E, Barquero LA, Bouton B. 2012. Accelerating chronically unresponsive children to tier 3 instruction: what level of data is necessary to ensure selection accuracy? *J Learn Disabil.* 45: 204–216.
- Cooper H, Nye B, Charlton K, Lindsay J, Greathouse S. 1996. The effects of summer vacation on achievement test scores: a narrative and meta-analytic review. *Rev Educ Res.* 66: 227–268.
- Dale AM, Fischl B, Sereno MI. 1999. Cortical surface-based analysis. I. Segmentation and surface reconstruction. *Neuroimage.* 9:179–194.
- Davis N, Barquero L, Compton DL, Fuchs LS, Fuchs D, Gore JC, Anderson AW. 2011. Functional correlates of children's responsiveness to intervention. *Dev Neuropsychol.* 36: 288–301.
- Denton CA. 2012. Response to intervention for reading difficulties in the primary grades: some answers and lingering questions. *J Learn Disabil.* 45:232–243.
- Desikan RS, Segonne F, Fischl B, Quinn BT, Dickerson BC, Blacker D, Buckner RL, Dale AM, Maguire RP, Hyman BT, et al. 2006. An automated labeling system for subdividing the human cerebral cortex on MRI scans into gyral based regions of interest. *Neuroimage.* 31:968–980.
- Duncan GJ, Magnuson K. 2012. Socioeconomic status and cognitive functioning: moving from correlation to causation. *WIREs Cogn Sci.* 3:377–386.
- Dunn LM, Dunn DM. 2007. Peabody picture vocabulary test. 4th ed. Bloomington, MN: NCS Pearson Inc.
- Eckert MA. 2004. Neuroanatomical markers for dyslexia: a review of dyslexia structural imaging studies. *Neuroscientist.* 10:362–371.
- Eckert MA, Leonard CM, Richards TL, Aylward EH, Thomson J, Berninger VW. 2003. Anatomical correlates of dyslexia: frontal and cerebellar findings. *Brain.* 126:482–494.
- Ensminger ME, Fothergill K. 2003. A decade of measuring SES: what it tells us and where to go from here. In: Bradley MH, Bornstein RH, editors. *Socioeconomic status, parenting, and child development.* Mahwah, NJ: Lawrence Erlbaum Associates. p. 13–27.
- Farah MJ, Shera DM, Savage JH, Betancourt L, Giannetta JM, Brodsky NL, Malmud EK, Hurt H. 2006. Childhood poverty: specific associations with neurocognitive development. *Brain Res.* 1110:166–174.
- Farris EA, Odegard TN, Miller HL, Ring J, Allen G, Black J. 2011. Functional connectivity between the left and right inferior frontal lobes in a small sample of children with and without reading difficulties. *Neurocase.* 17:425–439.
- Fernald A, Marchman VA, Weisleder A. 2013. SES differences in language processing skill and vocabulary are evident at 18 months. *Dev Sci.* 16:234–248.
- Fischl B. 2012. FreeSurfer. *Neuroimage.* 62:774–781.
- Fischl B, Dale AM. 2000. Measuring the thickness of the human cerebral cortex from magnetic resonance images. *Proc Natl Acad Sci USA.* 97:11050–11055.
- Friend A, DeFries JC, Olson RK. 2008. Parental education moderates genetic influences on reading disability. *Psychol Sci.* 19: 1124–1130.
- Gabrieli JD, Christodoulou JA, O'Loughlin T, Eddy MD. 2010. The reading brain: cognitive neuroscience of reading development and difficulty. In: Sousa DA, editor. *Mind, brain, & education: neuroscience implications for the classroom.* Bloomington, IN: Solution Tree. p. 113–138.
- Germano E, Gagliano A, Curatolo P. 2010. Comorbidity of ADHD and dyslexia. *Dev Neuropsychol.* 35:475–493.
- Good RH, Kaminski RAE. 2002. *Dynamic indicators of basic early literacy skills* Eugene, OR: Institute for the Development of Educational Achievement.
- Grodzinsky Y, Santi A. 2008. The battle for Broca's region. *Trends Cogn Sci.* 12:474–480.
- Gullick MM, Demir-Lira OE, Booth JR. 2016. Reading skill-fractional anisotropy relationships in visuospatial tracts diverge depending on socioeconomic status. *Dev Sci.* 19:673–685.
- Hagler DJ Jr., Saygin AP, Sereno MI. 2006. Smoothing and cluster thresholding for cortical surface-based group analysis of fMRI data. *Neuroimage.* 33:1093–1103.
- Hagoort P. 2005. On Broca, brain, and binding: a new framework. *Trends Cogn Sci.* 9:416–423.

- Hagoort P. 2014. Nodes and networks in the neural architecture for language: Broca's region and beyond. *Curr Opin Neurobiol.* 28:136–141.
- Hair NL, Hanson JL, Wolfe BL, Pollak SD. 2015. Association of child poverty, brain development, and academic achievement. *JAMA Pediatr.* 169:822–829.
- Hanson JL, Hair N, Shen DG, Shi F, Gilmore JH, Wolfe BL, Pollak SD. 2013. Family poverty affects the rate of human infant brain growth. *PLoS One.* 8:e80954.
- Hart B, Risley T. 1995. Meaningful differences in the everyday experience of young American children. Baltimore: P.H. Brookes.
- Hasko S, Groth K, Bruder J, Bartling J, Schulte-Korne G. 2014. What does the brain of children with developmental dyslexia tell us about reading improvement? ERP evidence from an intervention study. *Front Hum Neurosci.* 8:441.
- Hatcher PJ, Hulme C, Miles JN, Carroll JM, Hatcher J, Gibbs S, Smith G, Bowyer-Crane C, Snowling MJ. 2006. Efficacy of small group reading intervention for beginning readers with reading-delay: a randomised controlled trial. *J Child Psychol Psychiatry.* 47:820–827.
- Hayes AF. 2013. Introduction to mediation, moderation, and conditional process analysis: a regression-based approach. New York, NY: The Guilford Press.
- Hecht SA, Burgess SR, Torgesen JK, Wagner RK, Rashotte CA. 2000. Explaining social class differences in growth of reading skills from beginning kindergarten through fourth-grade: the role of phonological awareness, rate of access, and print knowledge. *Read Writ.* 12:99–127.
- Hoefl F, Meyler A, Hernandez A, Juel C, Taylor-Hill H, Martindale JL, McMillon G, Kolchugina G, Black JM, Faizi A, et al. 2007. Functional and morphometric brain dissociation between dyslexia and reading ability. *Proc Natl Acad Sci USA.* 104:4234–4239.
- Hoff E. 2003. The specificity of environmental influence: socioeconomic status affects early vocabulary development via maternal speech. *Child Dev.* 74:1368–1378.
- Hoff E. 2006. How social contexts support and shape language development. *Dev Rev.* 26:55–88.
- Hoff E, Laursen B, Tardif T. 2002. Socioeconomic status and parenting. In: Bornstein MH, editor. *Handbook of parenting, Vol. 2: Biology and ecology of parenting.* 2nd ed.. Mahway, NJ: Lawrence Erlbaum Associates. p. 231–252.
- Jednorog K, Altarelli I, Monzalvo K, Fluss J, Dubois J, Billard C, Dehaene-Lambertz G, Ramus F. 2012. The influence of socioeconomic status on children's brain structure. *PLoS One.* 7: e42486.
- Kaufman AS, Kaufman NL. 2004. Kaufman brief intelligence test. 2nd ed. Minneapolis, MN: Pearson.
- Keller TA, Just MA. 2009. Altering cortical connectivity: remediation-induced changes in the white matter of poor readers. *Neuron.* 64:624–631.
- Kirkpatrick RM, Legrand LN, Iacono WG, McGue M. 2011. A twin and adoption study of reading achievement: Exploration of shared-environmental and gene-environment-interaction effects. *Learn Individ Differ.* 21:368–375.
- Krafnick AJ, Flowers DL, Napoliello EM, Eden GF. 2011. Gray matter volume changes following reading intervention in dyslexic children. *Neuroimage.* 57:733–741.
- Kronbichler M, Wimmer H, Staffen W, Hutzler F, Mair A, Ladurner G. 2008. Developmental dyslexia: gray matter abnormalities in the occipitotemporal cortex. *Hum Brain Mapp.* 29:613–625.
- Kutas M, Federmeier KD. 2011. Thirty years and counting: finding meaning in the N400 component of the event related brain potential (ERP). *Annu Rev Psychol.* 62:621–647.
- Lam EA, McMaster KL. 2014. Predictors of responsiveness to early literacy intervention: a 10-year update. *Learn Disability Q.* 37:134–147.
- Lee VE, Burkam DT. 2002. Social disadvantage and school quality. Inequality at the starting gate: Social background differences in achievement as children begin school, Chapter 4. Washington, DC: Economic Policy Institute.
- Linkersdörfer J, Lonnemann J, Lindberg S, Hasselhorn M, Fiebach CJ. 2012. Grey matter alterations co-localize with functional abnormalities in developmental dyslexia: an ALE meta-analysis. *Plos One.* 7:e43122.
- Lyon GR, Shaywitz SE, Shaywitz BA. 2003. A definition of dyslexia. *Ann Dyslexia.* 53:1–14.
- Mackey AP, Finn AS, Leonard JA, Jacoby-Senghor DS, West MR, Gabrieli CF, Gabrieli JD. 2015. Neuroanatomical correlates of the income-achievement gap. *Psychol Sci.* 26:925–933.
- Mascheretti S, Bureau A, Battaglia M, Simone D, Quadrelli E, Croteau J, Cellino MR, Giorda R, Beri S, Maziade M, et al. 2013. An assessment of gene-by-environment interactions in developmental dyslexia-related phenotypes. *Genes Brain Behav.* 12:47–55.
- McCoach DB, O'Connell AA, Reis SM, Levitt HA. 2006. Growing readers: a hierarchical linear model of children's reading growth during the first 2 years of school. *J Educ Psychol.* 98: 14–28.
- Melby-Lervåg M, Lyster S-AH, Hulme C. 2012. Phonological skills and their role in learning to read: a meta-analytic review. *Psychol Bull.* 138:322–352.
- Mercy JA, Steelman LC. 1982. Familial influence on the intellectual attainment of children. *Am Sociol Rev.* 47:532–542.
- Molfese PJ, Fletcher JM, Denton CA. 2013. Adequate versus inadequate response to reading intervention: an event-related potentials assessment. *Dev Neuropsychol.* 38: 534–549.
- Monzalvo K, Fluss J, Billard C, Dehaene S, Dehaene-Lambertz G. 2012. Cortical networks for vision and language in dyslexic and normal children of variable socio-economic status. *Neuroimage.* 61:258–274.
- Morris RD, Lovett MW, Wolf M, Sevcik RA, Steinbach KA, Frijters JC, Shapiro MB. 2012. Multiple-component remediation for developmental reading disabilities: IQ, socioeconomic status, and race as factors in remedial outcome. *J Learn Disabil.* 45:99–127.
- Nelson JR, Benner GJ, Gonzalez J. 2003. Learner characteristics that influence the treatment effectiveness of early literacy interventions: a meta-analytic review. *Learn Disabil Res Pract.* 18:255–267.
- Noble KG, Farah MJ, McCandliss BD. 2006. Socioeconomic background modulates cognition-achievement relationships in reading. *Cogn Dev.* 21:349–368.
- Noble KG, Houston SM, Brito NH, Bartsch H, Kan E, Kuperman JM, Akshoomoff N, Amaral DG, Bloss CS, Libiger O, et al. 2015. Family income, parental education and brain structure in children and adolescents. *Nat Neurosci.* 18:773–778.
- Noble KG, Houston SM, Kan E, Sowell ER. 2012. Neural correlates of socioeconomic status in the developing human brain. *Dev Sci.* 15:516–527.
- Noble KG, McCandliss BD, Farah MJ. 2007. Socioeconomic gradients predict individual differences in neurocognitive abilities. *Dev Sci.* 10:464–480.

- Noble KG, Norman MF, Farah MJ. 2005. Neurocognitive correlates of socioeconomic status in kindergarten children. *Dev Sci.* 8:74–87.
- Norton ES, Beach SD, Gabrieli JDE. 2015. Neurobiology of dyslexia. *Curr Opin Neurobiol.* 30:73–78.
- Odegard TN, Ring J, Smith S, Biggan J, Black J. 2008. Differentiating the neural response to intervention in children with developmental dyslexia. *Ann Dyslexia.* 58:1–14.
- Perkins SC, Finegood ED, Swain JE. 2013. Poverty and language development: roles of parenting and stress. *Innov Clin Neurosci.* 10:10–19.
- Peterson RL, Pennington BF. 2015. Developmental dyslexia. *Annu Rev Clin Psychol.* 11:283–307.
- Raizada RD, Richards TL, Meltzoff A, Kuhl PK. 2008. Socioeconomic status predicts hemispheric specialisation of the left inferior frontal gyrus in young children. *Neuroimage.* 40:1392–1401.
- Raschle NM, Chang M, Gaab N. 2011. Structural brain alterations associated with dyslexia predate reading onset. *Neuroimage.* 57:742–749.
- Reuter M, Fischl B. 2011. Avoiding asymmetry-induced bias in longitudinal image processing. *Neuroimage.* 57:19–21.
- Reuter M, Rosas HD, Fischl B. 2010. Highly accurate inverse consistent registration: a robust approach. *Neuroimage.* 53:1181–1196.
- Reuter M, Schmansky NJ, Rosas HD, Fischl B. 2012. Within-subject template estimation for unbiased longitudinal image analysis. *Neuroimage.* 61:1402–1418.
- Rezaie R, Simos PG, Fletcher JM, Cirino PT, Vaughn S, Papanicolaou AC. 2011a. Engagement of temporal lobe regions predicts response to educational interventions in adolescent struggling readers. *Dev Neuropsychol.* 36:869–888.
- Rezaie R, Simos PG, Fletcher JM, Cirino PT, Vaughn S, Papanicolaou AC. 2011b. Temporo-parietal brain activity as a longitudinal predictor of response to educational interventions among middle school struggling readers. *J Int Neuropsychol Soc.* 17:875–885.
- Richlan F, Kronbichler M, Wimmer H. 2013. Structural abnormalities in the dyslexic brain: a meta-analysis of voxel-based morphometry studies. *Hum Brain Mapp.* 34:3055–3065.
- Schwab JF, Lew-Williams C. 2016. Language learning, socioeconomic status, and child-directed speech. *Wiley Interdiscip Rev Cogn Sci.* 7:264–275.
- Shaywitz SE. 1998. Dyslexia. *New Engl J Med.* 338:307–312.
- Shaywitz SE, Morris R, Shaywitz BA. 2008. The education of dyslexic children from childhood to young adulthood. *Annu Rev Psychol.* 59:451–475.
- Shiffrer D, Muller C, Callahan R. 2011. Disproportionality and learning disabilities: parsing apart race, socioeconomic status, and language. *J Learn Disabil.* 44:246–257.
- Silani G, Frith U, Demonet JF, Fazio F, Perani D, Price C, Frith CD, Paulesu E. 2005. Brain abnormalities underlying altered activation in dyslexia: a voxel based morphometry study. *Brain.* 128:2453–2461.
- Simos PG, Fletcher JM, Sarkari S, Billingsley RL, Denton C, Papanicolaou AC. 2007. Altering the brain circuits for reading through intervention: a magnetic source imaging study. *Neuropsychologia.* 21:485–496.
- Sowell ER, Thompson PM, Leonard CM, Welcome SE, Kan E, Toga AW. 2004. Longitudinal mapping of cortical thickness and brain growth in normal children. *J Neurosci.* 24:8223–8231.
- Steinbrink C, Vogt K, Kastrup A, Müller HP, Juengling FD, Kassubek J, Riecker A. 2008. The contribution of white and gray matter differences to developmental dyslexia: insights from DTI and VBM at 3.0T. *Neuropsychologia.* 46:3170–3178.
- Tisdall MD, Hess AT, Reuter M, Meintjes EM, Fischl B, van der Kouwe AJ. 2012. Volumetric navigators for prospective motion correction and selective reacquisition in neuroanatomical MRI. *Magn Reson Med.* 68:389–399.
- Torgesen JK, Wagner R, Rashotte C. 2012. Test of word reading efficiency. 2nd ed.. Austin, TX: PRO-ED.
- Torgesen JK, Wagner RK, Rashotte CA, Rose E, Lindamood P, Conway T, Garvan C. 1999. Preventing reading failure in young children with phonological processing disabilities: Group and individual responses to instruction. *J Educ Psychol.* 91:579–593.
- Tucker-Drob EM, Bates TC. 2016. Large cross-national differences in gene x socioeconomic status interaction on intelligence. *Psychol Sci.* 27:138–149.
- Ursache A, Noble KG. 2016. Neurocognitive development in socioeconomic context: multiple mechanisms and implications for measuring socioeconomic status. *Psychophysiology.* 53:71–82.
- U.S. Department of Education. 2015. Institute of Education Sciences, National Center for Education Statistics. National assessment of educational progress (NAEP).
- van der Kouwe AJ, Benner T, Salat DH, Fischl B. 2008. Brain morphometry with multiecho MPRAGE. *Neuroimage.* 40:559–569.
- Vellutino FR, Scanlon DM, Zhang H, Schatschneider C. 2007. Using response to kindergarten and first grade intervention to identify children at-risk for long-term reading difficulties. *Read Writ.* 21:437–480.
- Vinckenbosch E, Robichon F, Eliez S. 2005. Gray matter alteration in dyslexia: converging evidence from volumetric and voxel-by-voxel MRI analyses. *Neuropsychologia.* 43:324–331.
- Wagner R, Torgesen JK, Rashotte C. 1999. Comprehensive test of phonological processing. Austin, TX: PRO-ED.
- White KR. 1982. The relation between socioeconomic status and academic achievement. *Psychol Bull.* 91:461–481.
- Wolf M, Denckla MB. 2005. Rapid automatized naming and rapid alternating stimulus tests (RAN/RAS). Austin, TX: PRO-ED.
- Woodcock RW. 2011. Woodcock reading mastery tests. 4th ed. Minneapolis, MN: Pearson.