

Effectiveness of lomustine and bevacizumab in progressive glioblastoma: a meta-analysis

Jie Song¹
Yue-Qin Xue²
Ming-Ming Zhao³
Peng Xu¹

¹Department of Neurosurgery, Linyi Central Hospital, Linyi, People's Republic of China; ²Department of Pharmacy, Linyi Central Hospital, Linyi, People's Republic of China; ³Department of Cardiology, Linyi Central Hospital, Linyi, People's Republic of China

Background: Glioblastomas (GBMs) are the most aggressive type of glial brain tumors. Despite aggressive treatment with surgery and chemoradiation, GBMs invariably relapse and tumors are progressive. Controversy remains on optimal treatment of patients with recurrent GBMs. Data from previous trials have suggested that the addition of bevacizumab (BEV) to lomustine (CCNU) might improve overall survival (OS) as compared with that with monotherapies. The aim of this study was to compare the efficacy of BEV in addition to CCNU versus single-agent therapy in patients with recurrent GBM.

Methods: Electronic databases were searched for eligible literature updated in December 2017. Trials assessing the effectiveness of CCNU and BEV in progressive GBM were included, of which the main outcomes were progression-free survival (PFS) and OS. All the data were pooled with the corresponding 95% confidence intervals (CIs) using RevMan software. Sensitivity and heterogeneity were quantitatively evaluated.

Results: Three randomized clinical trials were identified, including 574 patients (combination group: 358, monotherapies group: 216). The combination group treated with BEV and CCNU showed improvement in PFS (OR = 0.49; 95% CI, 0.41–0.59; $p < 0.00001$). No significant differences were, however, found in patients in terms of the OS (OR = 0.84; 95% CI, 0.68–1.03; $p = 0.09$).

Conclusion: Although treatment with CCNU plus BEV prolonged PFS, it did not confer OS advantage over monotherapies in patients with progressive GBM. The encouraging results of the addition of CCNU to BEV warrant investigation in further randomized trials.

Keywords: glioblastoma, bevacizumab, lomustine, meta-analysis, brain tumors, progression free survival

Introduction

Glioblastomas (GBMs) are the most common and aggressive type of glial brain tumors¹ and have a poor prognosis. The current standard of treatment for GBM includes surgical resection followed by combined chemoirradiation with concurrent temozolomide (TMZ).² However, GBMs invariably relapse, and when tumor progresses, treatment options are scarce and with poor effectiveness. Previous studies have identified genetically diverse tumors cells, which are used to classify tumors into different subgroups according to their molecular signature,^{3–6} to find new targets for specific subgroups of patients.^{7–9} Because of the extensive endothelial proliferation that characterizes GBM, soon after the discovery of vascular endothelial growth factor (VEGF) and its significance in the angiogenesis of tumor growth, it has been hypothesized that GBM would provide a good target for antiangiogenic treatments.¹⁰ Previous studies suggested that bevacizumab (BEV), a monoclonal antibody that targets VEGF, alone or in combination with cytotoxic agents, showed interesting results in terms of treatment for recurrent GBM. Preliminary data suggest a beneficial effect of the combination of BEV and lomustine (CCNU) in patients

Correspondence: Peng Xu
Department of Neurosurgery, Linyi Central Hospital, No 17 Jiankang Road, Linyi 276400, Shandong, People's Republic of China
Tel +86 539 225 1953
Email jom9ie@163.com

with GBM progressing after TMZ-based chemoradiation.¹¹ Similar to the TMZ therapy, CCNU, an alkylating nitrosurea drug, can be administered at initial diagnosis or at tumor recurrence. However, Piccioni et al¹² demonstrated the equal efficacy of BEV monotherapy, but with no additional benefit of CCNU. Whether BEV should be used as a monotherapy for tumor progression or used by adding to another drug has also remained a matter of debate. Given the lack of clear options, we explored the efficacy of adding CCNU to BEV for GBM patients who progressed after initial therapy.

Methods

Search strategy

Two investigators independently searched the electronic databases PubMed, Embase, and Cochrane Library for relevant literature published up to December 2017. The process was established to find all articles with the keywords “Glioblastoma” AND “Bevacizumab” AND “Lomustine”, and relevant Medical Subject Heading terms were utilized. The reference lists of all articles that dealt with the topic of interest were also hand-searched to check for additional relevant publications.

Eligibility criteria

Studies that met the following criteria were included in the meta-analysis: 1) the studies comparing the effectiveness of combination of BEV and CCNU in progressive GBM and 2) the outcomes of interest were survival efficacy, and hazard ratios (HRs) with corresponding 95% confidence intervals (CIs) were provided. When we found duplicated or overlapped data in multiple reports, we just included the one with the most complete information.

Quality assessment

Two investigators separately rated the quality of the retrieved studies. We chose the risk-of-bias items recommended by The Cochrane Handbook for Systematic Reviews of Interventions.

Data extraction

Two authors independently extracted the relevant data from each trial. Disagreement was resolved by consensus. From each of the eligible studies, the following information was extracted: the first author’s family name, publication year, study type, treatment regimen, and end points of interests. We extracted the corresponding HRs and risk ratios to describe the strength of the association for survival data (overall survival [OS] and progression-free survival [PFS], respectively), with corresponding 95% CIs.

Statistical analysis

The end points of interest in the pooled analysis were OS and PFS data, and the end point outcome was considered as a weighted average of individual estimate of the HR in every included study, using the inverse variance method. If HRs and corresponding 95% CIs were reported, logarithm of HRs and the corresponding logarithm of lower limits and logarithm of upper limits were used as data points in pooling the analysis, whereas if a study did not provide HRs or 95% CIs, the only available data were in the form of K–M curves. Survival data were extracted from amplified K–M curves, according to the methods described by Tierney et al.¹³

A sensitivity analysis was also performed to examine the impact on the overall results, depending on the heterogeneity across the included studies. Heterogeneity across studies was examined using the I^2 statistic.¹⁴ Studies with an I^2 of 25%–50%, 50%–75%, or >75% were considered to have low, moderate, or high heterogeneity, respectively.¹⁵ When there was low heterogeneity among the studies, the fixed-effects model was used; otherwise, the random-effects model was used. A p -value less than 0.05 was considered statistically significant. The statistical analyses were performed using the Review Manager Version 5.3 software (RevMan; The Cochrane Collaboration, Oxford, UK). Findings of our meta-analysis are shown in forest plots. The Begg’s and the Egger’s tests were conducted to evaluate publication bias.

Results

Overview of literature search and study characteristics

A total of 213 studies were retrieved initially for evaluation. Based on the criteria described in the “Methods” section, eight publications were evaluated in more detail, but some did not provide enough detail of outcomes of two approaches. Therefore, a final total of three trials^{16–18} addressed the combination of BEV and CCNU in treating progressive GBM. The search process is described in Figure 1. All included studies in this study were based on moderate- to high-quality evidence. Table 1 describes the primary characteristics of the eligible studies in more detail.

Clinical and methodological heterogeneity

Pooled analysis of PFS with the combination of BEV and CCNU in progressive GBM

Pooling the PFS data from all the three studies^{16–18} showed that the combination therapy did prolong the PFS (OR = 0.49; 95% CI, 0.41–0.59; $p < 0.00001$) as compared with that in the monotherapy group (Figure 2).

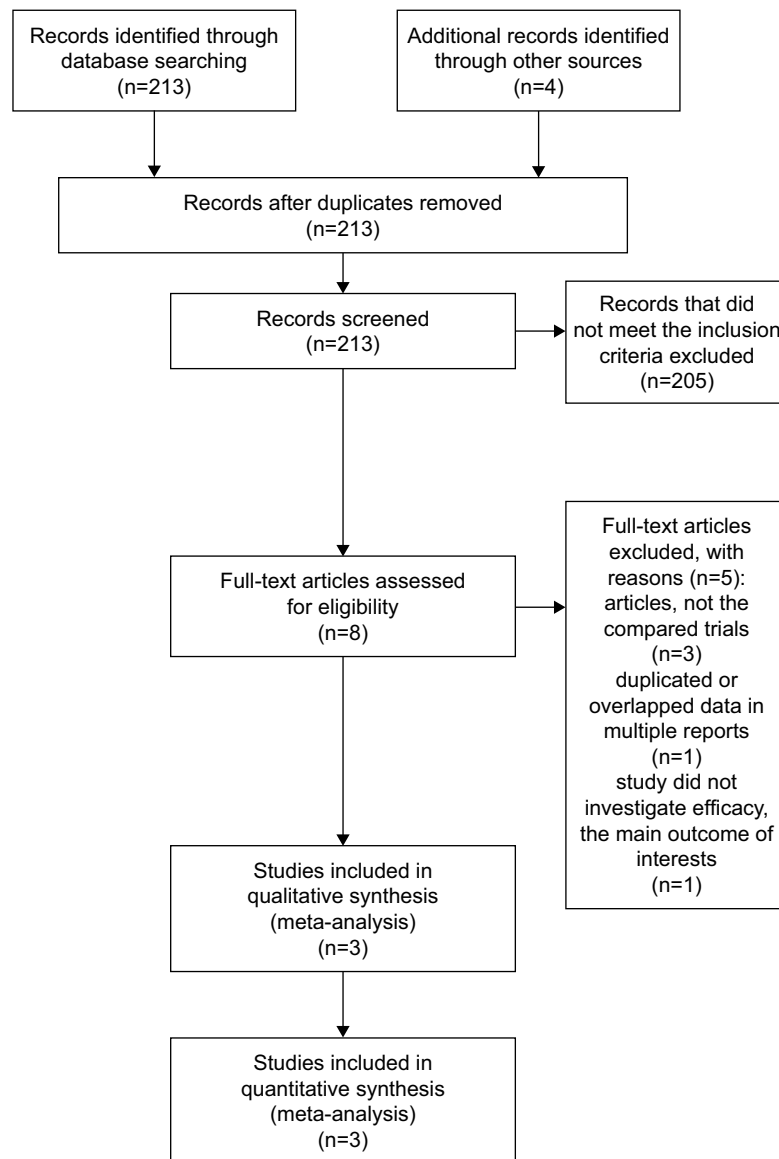


Figure 1 PRISMA flowchart of selection process to identify studies eligible for pooling.

Pooled analysis of OS with the combination of BEV and CCNU in progressive GBM

A fixed-effects model was used to pool the OS data.^{16–18} The pooled data showed that the combination of BEV and CCNU did not improve the OS (OR = 0.84; 95% CI, 0.68–1.03; $p = 0.09$) as compared with that in the monotherapy group (Figure 3).

Discussion

GBM is the most common brain cancer in adults. Despite aggressive treatment with surgery and chemoradiation, its prognosis still remains poor.¹⁹ Controversy remains on the optimal treatment of patients with recurrent GBM. GBMs are highly vascularized tumors in which the VEGF signaling

Table 1 Primary characteristics of the eligible studies

Study	Year	Trial	N	Age	
				Combination group	Monotherapies
Wick et al ¹⁶	2017	RCT	288	57.1	59.8
Heiland et al ¹⁷	2016	Retrospective study	18	50	39.5
Taal et al (1) ¹¹	2013	RCT	52	58	58
Taal et al (2) ¹⁸	2014	RCT			

Notes: Combination group: BEV+CCNU; monotherapies: BEV or CCNU. Taal et al (1): BEV+CCNU 90 vs BEV; Taal et al (2): BEV+CCNU 90 vs CCNU.

Abbreviations: RCT, randomized controlled trial; BEV, bevacizumab; CCNU, lomustine.

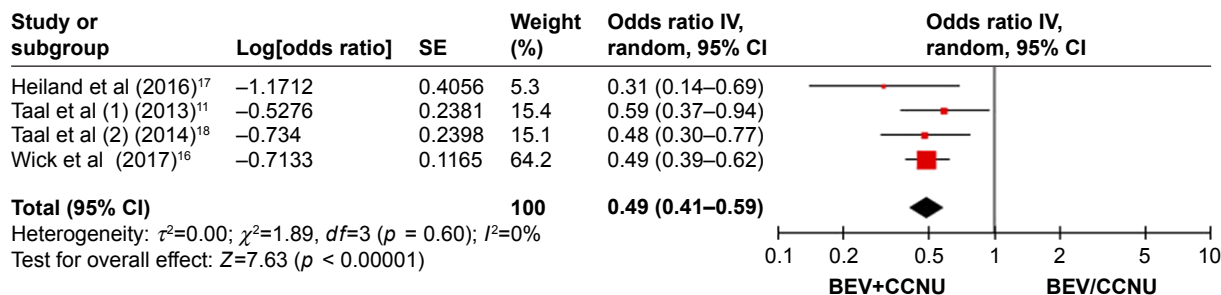


Figure 2 Pooled analysis of PFS with the combination of BEV and CCNU in progressive GBM. **Abbreviations:** PFS, progression-free survival; BEV, bevacizumab; CCNU, lomustine; GBM, glioblastoma; CI, confidence interval.

pathway is upregulated. BEV is a humanized monoclonal antibody against circulating VEGF. Although BEV is commonly used, data on timing of administration and optimal patient management upon further progression remain limited. CCNU has been an approved option for recurrent GBM and has also been frequently administered in clinical trials as the standard treatment.^{20,21}

Randomized Phase II BELOB trial demonstrated a potential benefit of BEV when added to CCNU chemotherapy in patients with recurrent GBM, although no consensus has been reached on how patients who experience further disease progression after a combined treatment with BEV and CCNU salvage therapy should be treated.^{22,23}

In this analysis, we found that the combination of BEV with CCNU did not confer OS advantage over monotherapy alone, but prolonged PFS to some extent. The mechanism by which the combination treatment with BEV and CCNU prolongs PFS still remains undefined. It has been suggested that normalization of the vasculature around the tumor as well as improved regional cerebral blood flow and not necessarily the inhibition of tumor growth are the key components of the antiangiogenic activity.²⁴⁻²⁶

Moreover, results can be explained by the detailed assessment of the patient group and a selection bias with regard to the crossover design of various studies. Furthermore, biomarkers can also affect the outcome after treatment.

Taal et al¹⁸ showed that *IDH* mutation status increased the sensitivity to treatment. This raises the question of whether trials on recurrent GBM should identify a subset of patients with *IDH* wild-type tumors or should analyze patients according to *IDH* mutational status. In Erdem-Eraslan et al’s study,¹⁰ to identify recurrent GBM patients who benefit from combined CCNU and BEV treatment, gene expression was performed, and it was observed that patients with a specific molecular subtype of glioma, IGS-18, or “classical GBMs” may show more benefit from BEV+CCNU treatment.

The data on adverse effects (AEs) were limited; therefore, it was not possible to assess the AEs in this meta-analysis. In Wick et al’s study,¹⁶ the addition of BEV did not improve neurocognitive functioning, and did not lead to poorer neurocognitive function as compared with that observed with CCNU use alone. Heiland et al¹⁷ showed a slight increase in myelosuppression (thrombocytopenia and leukopenia) after the combination therapy. Both the trials showed that the combination therapy can be administered with an acceptable toxicity and no significant negative impact on the clinical performance of the patients compared to monotherapy, and the higher numbers of AEs should be assessed relative to the longer treatment period in the combination group.

Our study still has several limitations. First and the foremost, as this study was a study-level meta-analysis, there is publication bias leading to heterogeneity among the included

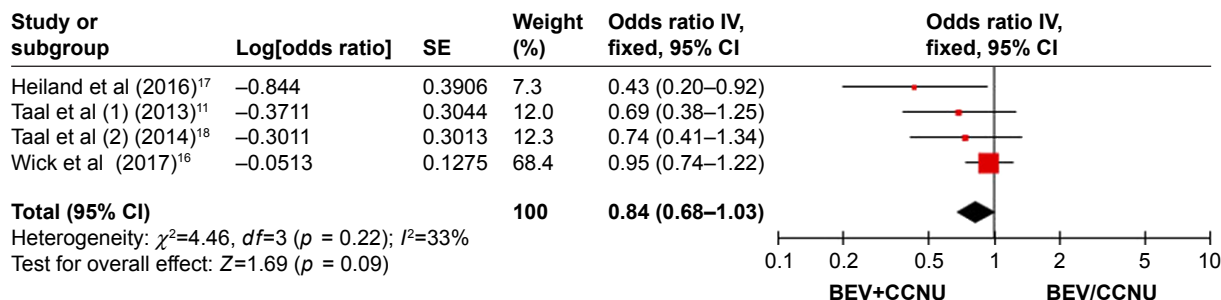


Figure 3 Pooled analysis of OS with the combination of BEV and CCNU in progressive GBM. **Abbreviations:** OS, overall survival; BEV, bevacizumab; CCNU, lomustine; GBM, glioblastoma; CI, confidence interval.

studies. The inclusion of retrospective studies was an inherent limitation, and differences in patient comorbidities could not be incorporated in such an analysis. Second, there are only two studies that reported available data on AEs, so we could not predict efficacy in AEs.

Conclusion

Although treatment with CCNU plus BEV prolonged PFS, it did not confer OS advantage over monotherapies in patients with progressive GBM. The future of antiangiogenic therapy remains unclear; it is hypothesized that combining immunotherapy with antiangiogenic treatment may have a synergistic effect and enhance the efficacy of both the treatments. The encouraging results of the addition of CCNU to BEV warrant investigation in further randomized trials.

Disclosure

The authors report no conflicts of interest in this work.

References

- Fuller GN. The WHO Classification of Tumours of the Central Nervous System, 4th edition. *Arch Pathol Lab Med.* 2008;132(6):906.
- Stupp R, Mason WP, van den Bent MJ, et al; European Organisation for Research and Treatment of Cancer Brain Tumor and Radiotherapy Groups; National Cancer Institute of Canada Clinical Trials Group. Radiotherapy plus concomitant and adjuvant temozolomide for glioblastoma. *N Engl J Med.* 2005;352(10):987–996.
- Brennan CW, Verhaak RG, McKenna A, et al; TCGA Research Network. The somatic genomic landscape of glioblastoma. *Cell.* 2013;155(2):462–477.
- Noushmehr H, Weisenberger DJ, Diefes K, et al; Cancer Genome Atlas Research Network. Identification of a CpG island methylator phenotype that defines a distinct subgroup of glioma. *Cancer Cell.* 2010;17(5):510–522.
- Parsons DW, Jones S, Zhang X, et al. An integrated genomic analysis of human glioblastoma multiforme. *Science.* 2008;321(5897):1807–1812.
- Verhaak RG, Hoadley KA, Purdom E, et al; Cancer Genome Atlas Research Network. Integrated genomic analysis identifies clinically relevant subtypes of glioblastoma characterized by abnormalities in PDGFRA, IDH1, EGFR, and NF1. *Cancer Cell.* 2010;17(1):98–110.
- Cancer Genome Atlas Research Network; Brat DJ, Verhaak RG, Aldape KD, et al. Comprehensive, integrative genomic analysis of diffuse lower-grade gliomas. *N Engl J Med.* 2015;372(26):2481–2498.
- Agnihotri S, Burrell KE, Wolf A, et al. Glioblastoma, a brief review of history, molecular genetics, animal models and novel therapeutic strategies. *Arch Immunol Ther Exp (Warsz).* 2013;61(1):25–41.
- Wild-Bode C, Weller M, Rimner A, Dichgans J, Wick W. Sublethal irradiation promotes migration and invasiveness of glioma cells: implications for radiotherapy of human glioblastoma. *Cancer Res.* 2001;61(6):2744–2750.
- Erdem-Eraslan L, van den Bent MJ, Hoogstrate Y, et al. Identification of patients with recurrent glioblastoma who may benefit from combined bevacizumab and CCNU therapy: a report from the BELOB trial. *Cancer Res.* 2016;76(3):525–534.
- Taal W, Oosterkamp HM, Walenkamp AME, et al. A randomized phase II study of bevacizumab versus bevacizumab plus lomustine versus lomustine single agent in recurrent glioblastoma: the Dutch BELOB study. *J Clin Oncol.* 2013;31(15):2001.
- Piccioni DE, Selfridge J, Mody RR, et al. Deferred use of bevacizumab for recurrent glioblastoma is not associated with diminished efficacy. *Neuro Oncol.* 2014;16(6):815–822.
- Tierney JF, Stewart LA, Ghersi D, Burdett S, Sydes MR. Practical methods for incorporating summary time-to-event data into meta-analysis. *Trials.* 2007;8:16.
- Higgins JP, Thompson SG. Quantifying heterogeneity in a meta-analysis. *Stat Med.* 2002;21(11):1539–1558.
- Higgins JP, Thompson SG, Deeks JJ, Altman DG. Measuring inconsistency in meta-analyses. *BMJ.* 2003;327(7414):557–560.
- Wick W, Gorlia T, Bendszus M, et al. Lomustine and bevacizumab in progressive glioblastoma. *N Engl J Med.* 2017;377(20):1954–1963.
- Heiland DH, Masalha W, Franco P, Machein MR, Weyerbrock A. Progression-free and overall survival in patients with recurrent glioblastoma multiforme treated with last-line bevacizumab versus bevacizumab/lomustine. *J Neurooncol.* 2016;126(3):567–575.
- Taal W, Oosterkamp HM, Walenkamp AM, et al. Single-agent bevacizumab or lomustine versus a combination of bevacizumab plus lomustine in patients with recurrent glioblastoma (BELOB trial): a randomised controlled phase 2 trial. *Lancet Oncol.* 2014;15(9):943–953.
- Lombardi G, Pambuku A, Bellu L, et al. Effectiveness of antiangiogenic drugs in glioblastoma patients: a systematic review and meta-analysis of randomized clinical trials. *Crit Rev Oncol Hematol.* 2017;111:94–102.
- Wick W, Puduvalli VK, Chamberlain MC, et al. Phase III study of enzastaurin compared with lomustine in the treatment of recurrent intracranial glioblastoma. *J Clin Oncol.* 2010;28(7):1168–1174.
- Batchelor TT, Mulholland P, Neyns B, et al. Phase III randomized trial comparing the efficacy of cediranib as monotherapy, and in combination with lomustine, versus lomustine alone in patients with recurrent glioblastoma. *J Clin Oncol.* 2013;31(26):3212–3218.
- Reardon DA, Desjardins A, Peters K, et al. Phase II study of metronomic chemotherapy with bevacizumab for recurrent glioblastoma after progression on bevacizumab therapy. *J Neurooncol.* 2011;103(2):371–379.
- Reardon DA, Desjardins A, Peters KB, et al. Phase 2 study of carboplatin, irinotecan, and bevacizumab for recurrent glioblastoma after progression on bevacizumab therapy. *Cancer.* 2011;117(23):5351–5358.
- Batchelor TT, Sorensen AG, di Tomaso E, et al. AZD2171, a pan-VEGF receptor tyrosine kinase inhibitor, normalizes tumor vasculature and alleviates edema in glioblastoma patients. *Cancer Cell.* 2007;11(1):83–95.
- Brandsma D, van den Bent MJ. Pseudoprogression and pseudoresponse in the treatment of gliomas. *Curr Opin Neurol.* 2009;22(6):633–638.
- Field KM, Jordan JT, Wen PY, Rosenthal MA, Reardon DA. Bevacizumab and glioblastoma: scientific review, newly reported updates, and ongoing controversies. *Cancer.* 2015;121(7):997–1007.

OncoTargets and Therapy

Publish your work in this journal

OncoTargets and Therapy is an international, peer-reviewed, open access journal focusing on the pathological basis of all cancers, potential targets for therapy and treatment protocols employed to improve the management of cancer patients. The journal also focuses on the impact of management programs and new therapeutic agents and protocols on

Submit your manuscript here: <http://www.dovepress.com/oncotargets-and-therapy-journal>

Dovepress

patient perspectives such as quality of life, adherence and satisfaction. The manuscript management system is completely online and includes a very quick and fair peer-review system, which is all easy to use. Visit <http://www.dovepress.com/testimonials.php> to read real quotes from published authors.