

Cite this: *Chem. Sci.*, 2016, 7, 4460

Supercoiled fibres of self-sorted donor–acceptor stacks: a turn-off/turn-on platform for sensing volatile aromatic compounds†

Anjamkudy Sandeep,^a Vakayil K. Praveen,^a Kalathil K. Kartha,^a
Venugopal Karunakaran^{ab} and Ayyappanpillai Ajayaghosh^{*ab}

To ensure the comfortable survival of living organisms, detection of different life threatening volatile organic compounds (VOCs) such as biological metabolites and carcinogenic molecules is of prime importance. Herein, we report the use of supercoiled supramolecular polymeric fibres of self-sorted donor–acceptor molecules as “turn-off/turn-on” fluorescent sensors for the detection of carcinogenic VOCs. For this purpose, a C₃-symmetrical donor molecule based on oligo(*p*-phenylenevinylene), C₃OPV, and a perylene bisimide based acceptor molecule, C₃PBI, have been synthesized. When these two molecules were mixed together in toluene, in contrast to the usual charge transfer (CT) stacking, supramolecular fibres of self-sorted stacks were formed at the molecular level, primarily driven by their distinct self-assembly pathways. However, CT interaction at the macroscopic level allows these fibres to bundle together to form supercoiled ropes. An interfacial photoinduced electron transfer (PET) process from the donor to the acceptor fibres leads to an initial fluorescence quenching, which could be modulated by exposure to strong donor or acceptor type VOCs to regenerate the respective fluorescence of the individual molecular stacks. Thus, strong donors could regenerate the green fluorescence of C₃OPV stacks and strong acceptors could reactivate the red fluorescence of C₃PBI stacks. These supercoiled supramolecular ropes of self-sorted donor–acceptor stacks provide a simple tool for the detection of donor- or acceptor-type VOCs of biological relevance, using a “turn-off/turn-on” fluorescence mechanism as demonstrated with *o*-toluidine, which has been reported as a lung cancer marker.

Received 10th February 2016

Accepted 20th March 2016

DOI: 10.1039/c6sc00629a

www.rsc.org/chemicalscience

Introduction

Early detection of deadly diseases such as cancer can save the lives of millions of people across the globe and hence is a prime concern of scientists and clinicians. At the onset of certain diseases, the metabolism of the human body changes to produce several volatile organic compounds (VOCs) in small quantities, some of which can be designated as disease markers.¹ Detection of cancer markers and carcinogenic VOCs such as *o*-toluidine, aromatic amines, nitroaromatics *etc.* is important since tobacco smoke contains a large number of them, which are known to cause bladder cancer.^{2a} *o*-Toluidine has also been detected in exhaled air from lung cancer patients.^{2b} Similarly, detection of electron deficient molecules

such as nitroaromatics is important since they are not only considered as explosives but are also toxic to living organisms through contamination of air and water.³

Considering the social relevance of the detection of carcinogenic VOCs, intense research is needed for further development in this area. These considerations prompted us to explore the potential of fluorescent donor–acceptor assemblies designed based on the principles of nanoarchitectonics⁴ for the sensing of volatile analytes. A number of reports are available on the sensing of VOCs such as aromatic amines⁵ and nitroaromatics^{3,6,7} that generally cause fluorescence quenching of a probe. In this context, self-sorted supramolecular assemblies^{8–10} are an ideal platform for the sensing of VOCs. We have earlier shown that fluorescent π -gelators are powerful tools for attogram level sensing of trinitrotoluene (TNT) through a contact mode^{7a} and thought that there could be immense scope for expanding this idea to the sensing of VOCs of metabolic origin, if the principles of molecular self-assembly and self-sorting are combined.

Usually, when donor and acceptor monomers are mixed, CT induced supramolecular polymers are formed.¹¹ Supramolecular control of the polymerization is difficult in such cases.¹² However, suitably functionalized π -systems¹⁰ such as

^aPhotosciences and Photonics Section, Chemical Sciences and Technology Division, CSIR-National Institute for Interdisciplinary Science and Technology (CSIR-NIIST), Thiruvananthapuram 695 019, India. E-mail: ajayaghosh@niist.res.in

^bAcademy of Scientific and Innovative Research (AcSIR), CSIR-NIIST Campus, Thiruvananthapuram 695 019, India

† Electronic supplementary information (ESI) available: Materials and methods, synthesis procedures and characterization data of the compounds, details of the isodesmic and nucleation–elongation models, and additional figures. See DOI: 10.1039/c6sc00629a



oligo(thiophenes) (OTs), oligo(*p*-phenylenevinyls) (OPVs) and perylene bisimides (PBIs) are known to form self-sorted supramolecular polymeric stacks when mixed, in which the emission is quenched due to photoinduced electron transfer (PET) from the electron rich OTs or OPVs to the electron deficient PBIs.^{10a,b} Recently, we reported the formation of self-sorted supramolecular assemblies of thienylenevinyls and PBIs that form coaxial fibres^{10d} through weak interfacial charge transfer interactions.¹³ Based on these findings, we hypothesized that suitably designed C_3 -symmetrical systems of OPVs and PBIs may form supramolecular polymers of self-sorted donor and acceptor fibres with quenched fluorescence. In such a case, the weak interfacial donor–acceptor interactions in the supercoiled fibres at supramolecular level can be perturbed by exposure to strong donor or acceptor molecular vapours, which may result in a “turn-on” fluorescence with distinct colour variation. As a proof-of-concept for this hypothesis, we illustrate that a combination of a C_3 -symmetrical OPV, C_3 OPV, and a C_3 -symmetrical PBI, C_3 PBI, (Fig. 1) forms supercoiled fibres of self-sorted donor–acceptor stacks, which results in a “turn-off/turn-on” fluorescence sensor for the detection of different aromatic VOCs.

Results and discussion

Synthesis of C_3 OPV and C_3 PBI was accomplished as shown in Schemes S1 and S2,[†] respectively, and they were characterised using FT-IR, ^1H and ^{13}C NMR spectroscopy, and MALDI-TOF mass spectrometry. Having obtained these molecules in a pure form, our first objective was to get a clear idea of the mechanistic pathway for the individual assembly of C_3 OPV and C_3 PBI. Detailed UV/Vis absorption studies revealed that these molecules self-assemble in toluene at a concentration range of 10^{-4} to 10^{-5} M (Fig. S1[†]). Further understanding of the self-assembly mechanism was possible from temperature-dependent absorption studies. For this purpose, the change in the absorption shoulder band at 425 nm of a hot toluene solution of (1×10^{-4} M) C_3 OPV was monitored as a function of temperature with a cooling rate of 1 K min^{-1} (Fig. S1b[†]). No hysteresis was observed when the solution was heated again to the monomeric state, indicating that the self-assembly process is reversible. It was clear from the plot of the fraction of aggregates (α_{agg}) versus

temperature that the molecule forms assemblies through an isodesmic pathway (equal-K model) as indicated by the broad melting curve, which could be fitted to a standard isodesmic model (Fig. 2a).¹⁴ This observation is quite surprising, especially considering the fact that most of the C_3 -symmetrical benzene trisamide derivatives are known to self-assemble through a cooperative nucleation–elongation mechanism.¹⁵ Based on this observation, we concluded that the isodesmic self-assembly of C_3 OPV (Fig. 2d) presumably is governed by π – π stacking of the OPV moieties and that the contribution from directional intermolecular H-bonding may be weak due to the presence of a sterically demanding aromatic core and six alkyl chains at the periphery.^{15,16} The thermodynamic parameters were calculated by applying the isodesmic model and are summarized in Table 1. The melting transition temperature (T_m , temperature at which $\alpha_{\text{agg}} = 0.50$) of the assembly was found to be 321.5 K (Fig. 2a) with an enthalpy value of $-85.1 \text{ kJ mol}^{-1}$ and an association constant of $4.7 \times 10^4 \text{ M}^{-1}$.

To probe the self-assembly pathway of C_3 PBI, the absorption changes at 527 nm were monitored as a function of temperature with a cooling rate of 1 K min^{-1} (Fig. S1d[†]). The plot of α_{agg} with temperature showed a non-sigmoidal transition, characteristic of a cooperative pathway, which could be fitted to a nucleation–elongation model (Fig. 2b and e).^{14c,15a,17–19} By applying this model, the elongation temperature (T_e) was determined as 360.5 K and the enthalpy release upon elongation (H_e) was calculated as $-27.4 \text{ kJ mol}^{-1}$. A high degree of cooperativity (K_a) was inferred from the small value of the equilibrium constant (10^{-6}) for the nucleation step.

After obtaining an idea of the individual assembly mechanisms of C_3 OPV and C_3 PBI in toluene, we studied the effect of mixing these molecules at a 1 : 1 ratio by monitoring the changes in the absorption spectra under identical experimental conditions. The resultant spectrum of the mixture in toluene (1×10^{-4} M) was found to be a sum of the absorption spectra of the individual constituents (Fig. S2[†]). Furthermore, the absence of a CT band in the absorption spectrum excludes the possibility of a molecular level donor–acceptor interaction. The mixture was cooled down slowly at a rate of 1 K min^{-1} . The variable temperature absorption spectral changes of the mixture monitored at 425 and 527 nm exhibited that melting of the individual aggregates occurred without much variation from their respective melting transition curves as observed for the individual assemblies (Fig. 2c and S3[†]). The transition curves obtained from a plot of α_{agg} versus temperature could be fitted to an isodesmic model and nucleation–elongation model for C_3 OPV and C_3 PBI, respectively (Fig. 2c). The thermodynamic parameters calculated for the mixture from the curve fitting are in good agreement with that of the individual assemblies. The melting transition temperature, T_m , of C_3 OPV in the mixture is 321.2 K, which is close to that of C_3 OPV alone (321.5 K). Similarly, T_m of the C_3 PBI assemblies in the mixture is 335.9 K, which matches to that observed for the individual assembly of C_3 PBI (336.3 K) (Fig. 2). The other thermodynamic parameters such as enthalpy and entropy changes of the molecules in the mixture also match with those of the individual molecular

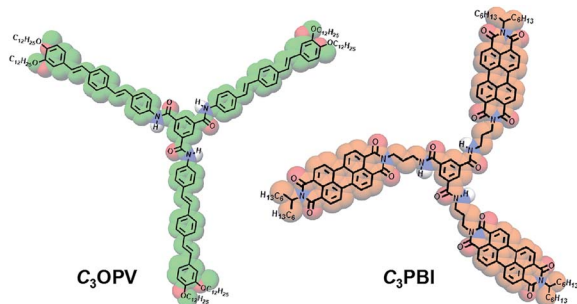


Fig. 1 Chemical structures and molecular models (shown in colour) of C_3 OPV and C_3 PBI.



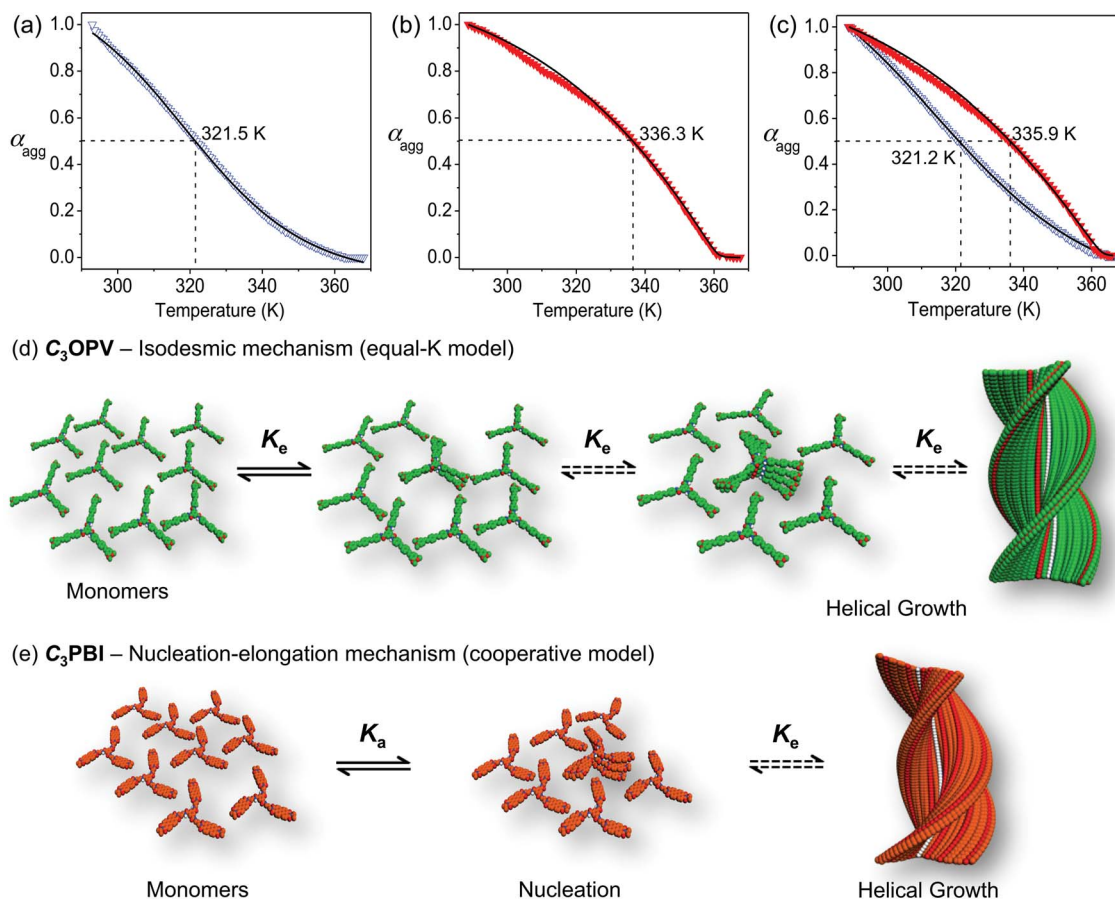


Fig. 2 Plot of the fraction of aggregates (α_{agg}) against temperature for (a) C_3OPV and (b) C_3PBI individual assemblies, and (c) for C_3OPV and C_3PBI as a 1 : 1 mixture in toluene (1×10^{-4} M). C_3OPV (Δ), C_3PBI (∇) and curve fitting (—). Absorbance was monitored at 425 and 527 nm for C_3OPV and C_3PBI , respectively, with a rate of cooling of 1 K min^{-1} . Schematic illustration of the self-assembly pathway of (d) C_3OPV and (e) C_3PBI . K_e is the association constant and K_a is the activation constant expressing the degree of cooperativity.

assemblies (Tables 1 and 2). These results imply that both C_3OPV and C_3PBI form self-sorted stacks when they are mixed.

Other important parameters for supporting the formation of a self-sorted assembly are the association constant (K_e) in the case of C_3OPV and the degree of cooperativity (K_a) in the case of C_3PBI (Tables 1 and 2). The association constant for the addition of individual monomers to the growing assembly of C_3OPV in the mixture is $3.7 \times 10^4 \text{ M}^{-1}$, which almost matches with the value for the individual assembly of C_3OPV ($4.7 \times 10^4 \text{ M}^{-1}$). For the cooperative self-assembly of C_3PBI , the degree of cooperativity is in the range of 10^{-6} , similar to that of the individual assembly.

Table 2 Thermodynamic parameters for the self-assembly of C_3PBI obtained using the nucleation elongation model^a

C_3PBI	C (mM)	ΔH_e (kJ mol ⁻¹)	ΔS_e (J mol ⁻¹ K ⁻¹)	T_m (K)	T_e (K)	K_a
Alone	0.1	-27.4	-140.9	336.3	360.5	10^{-6}
In the mixture	0.1	-27.5	-132.6	335.9	362.4	10^{-6}

^a C is the concentration, ΔH_e and ΔS_e , respectively, are the change in enthalpy and entropy during the elongation process, T_m is the melting transition temperature, T_e is the elongation temperature and K_a is the degree of cooperativity.

Table 1 Thermodynamic parameters for the self-assembly of C_3OPV obtained using the isodesmic model^a

C_3OPV	C (mM)	ΔH (kJ mol ⁻¹)	ΔS (J mol ⁻¹ K ⁻¹)	T_m (K)	K_e (10^4 M^{-1})	DP_N
Alone	0.1	-85.1	-194.5	321.5	4.7	2.7
In the mixture	0.1	-73.6	-158.0	321.2	3.7	2.5

^a C is the concentration, ΔH is the change in enthalpy, ΔS is the change in entropy, T_m is the melting transition temperature, K_e is the association constant and DP_N is the degree of polymerization.



Atomic force microscopy (AFM) images of C_3OPV drop cast from a 1×10^{-4} M toluene solution on a freshly cleaved mica surface revealed the formation of micrometer long helical fibres of a diameter of 200–250 nm (Fig. 3a). C_3PBI also displayed the formation of helical fibres with the diameter varying from 100–150 nm and the length extended to several micrometres (Fig. 3b). For the 1 : 1 mixture assembly, the fibre-like morphology was retained, however, the formation of supercoiled helical ropes with an increased diameter (400–500 nm) was observed (Fig. 3c). The scanning electron microscopy (SEM) images also support the formation of helical fibres and supercoiled ropes (Fig. 3d–f). These observations are in analogy with previous reports on the self-assembly of C_3 -symmetrical N,N',N'' -trialkyl benzene-1,3,5-tricarboxamide in which the amide functionality is involved in a three-fold helical array of intermolecular hydrogen bonding.²⁰ From the mechanistic studies and the morphological features, it was inferred that self-sorted donor and acceptor fibres are formed initially, which enter into weak interfacial charge transfer interactions at the supramolecular level resulting in supercoiled ropes.^{10d,13} The absorption spectra of a 1 : 1 mixture of C_3OPV and C_3PBI in solution (toluene, 1×10^{-4} M, Fig. S2†) and film states (Fig. 4a) did not show any CT bands, indicating the absence of a molecular level donor–acceptor interaction. However, significant quenching of the individual emissions of C_3OPV and C_3PBI was observed in the solution and the film states (Fig. S4† and 4b). These observations could be ascribed to a possible PET from the donor OPV to the acceptor PBI.

The PET process between C_3OPV and C_3PBI was investigated using femtosecond pump-probe spectroscopy. When a solution containing a 1 : 1 mixture of C_3OPV and C_3PBI was excited at

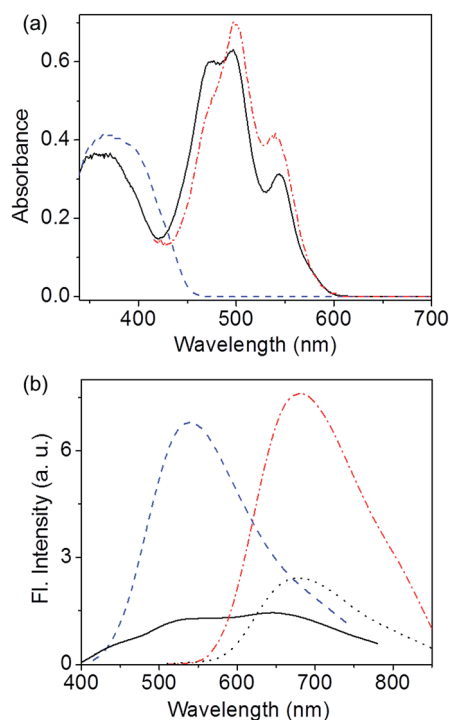


Fig. 4 (a) Absorption spectra of C_3OPV (---), C_3PBI (---), and a 1 : 1 mixture of C_3OPV and C_3PBI (—) in the film state. (b) Emission spectra of C_3OPV (---), $\lambda_{ex} = 375$ nm, C_3PBI (---), $\lambda_{ex} = 500$ nm, and a 1 : 1 mixture of C_3OPV and C_3PBI (—), $\lambda_{ex} = 375$ nm and (---) $\lambda_{ex} = 500$ nm, in the film state.

380 nm, where mainly C_3OPV absorbs, the transient absorption spectra showed the formation of a radical anion of C_3PBI absorbing broadly around 630 nm with a decay time of around

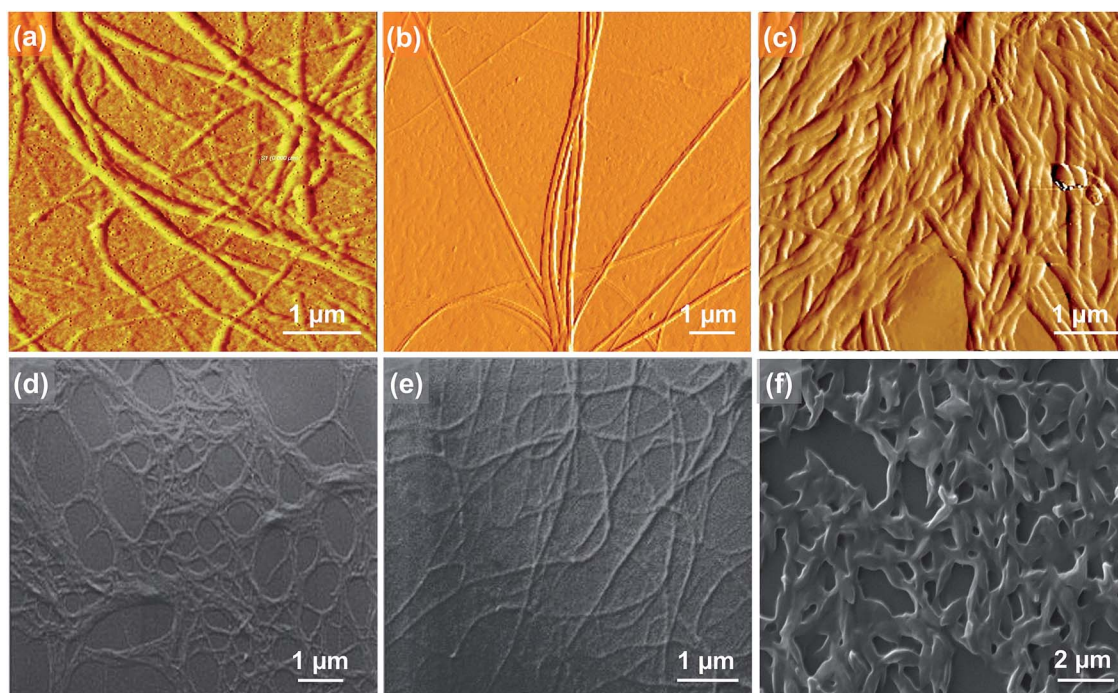


Fig. 3 AFM (a), (b) and (c), and SEM (d), (e) and (f) images of C_3OPV , C_3PBI , and the 1 : 1 mixture, respectively.



728 ps (Fig. 5a), which indicated PET from the OPV to the PBI.²¹ The feasibility of PET between these molecules was further established using photoelectron yield spectroscopic studies (Fig. S5†). From the value for the HOMO and the optical band gap (E_g) obtained from the film state absorption spectrum (Fig. S6†), the LUMO values of both C_3OPV and C_3PBI were calculated. C_3PBI showed a slightly lower LUMO (-4.20 eV) when compared to that of C_3OPV (-3.50 eV) (Fig. 5b). Since C_3PBI is an electron accepting molecule compared to C_3OPV , the HOMO level of the former is lower than that of C_3OPV (Fig. 5b). Therefore, upon photoexcitation, electrons are transferred from C_3OPV to C_3PBI leading to quenching of the emission.

Since OPVs are known to interact with electron deficient aromatic nitro compounds^{3e,7a} and PBIs with electron rich aromatic amines,^{5a-c,22} we thought that the quenched emission of the supercoiled C_3OPV and C_3PBI fibres could be “turned on” when they come into contact with a better donor or an acceptor molecule. In order to prove this hypothesis, a toluene solution of a 1 : 1 mixture of C_3OPV and C_3PBI (20 μ L of a 10^{-3} M solution) was drop cast on glass substrates and exposed to various analytes. The film that was exposed to aromatic amines such as *o*-toluidine displayed a greenish-yellow emission (Fig. 6a and c). Comparison of the absorption spectrum of C_3OPV and the excitation spectrum obtained upon monitoring the emission at 540 nm for the 1 : 1 mixture of C_3OPV and C_3PBI revealed that the emission originates from C_3OPV molecules in the mixture (Fig. S7†). On the other hand, a red emission was obtained when the film was exposed to nitrobenzene vapours (Fig. 6b and c). An excitation spectrum of the 1 : 1 mixture monitored at 650 nm showed a resemblance to the absorption spectrum of C_3PBI individual assembly (Fig. S8†), which proves that the red emission is from the self-assembled C_3PBI molecules. Similar experiments were conducted for other aromatic amines such as 2-aminophenol, aniline, *m*-toluidine, etc. and nitroaromatics such as TNT, dinitrotoluene (DNT), *o*-nitrotoluene, etc., and the results are summarized in Fig. 7.

The observed “turn-on” emission for the 1 : 1 mixed C_3OPV and C_3PBI films in the presence of the analytes is explained as follows. Electron rich aromatic amines facilitate a strong CT interaction with the electron deficient C_3PBI fibres, which in turn prevents the weak interfacial PET from the C_3OPV fibres to

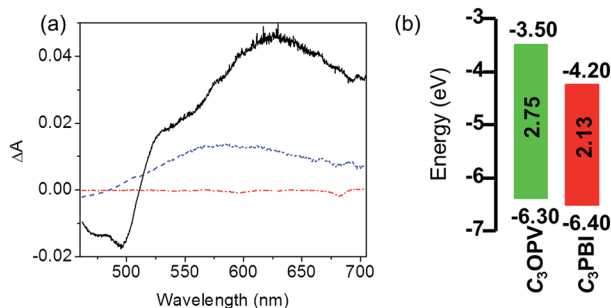


Fig. 5 (a) Transient absorption spectra of C_3OPV (---), C_3PBI (---) and a 1 : 1 mixture (—) in toluene (1×10^{-4} M) recorded at 1.9 ps, $\lambda_{ex} = 380$ nm. (b) An energy level diagram for C_3OPV and C_3PBI .

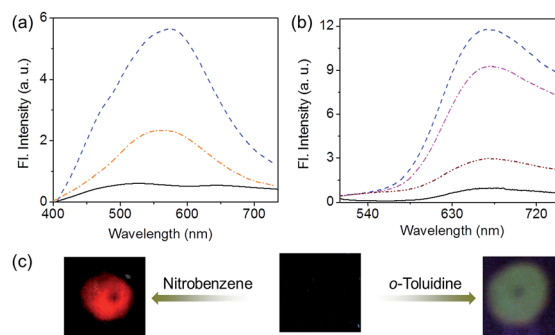


Fig. 6 The emission spectra of films of a 1 : 1 mixture of C_3OPV and C_3PBI before and after exposure to vapours of different (a) aromatic amines [(---) *o*-toluidine, (---) aniline and (—) blank], $\lambda_{ex} = 375$ nm, and (b) nitroaromatics [(---) nitrobenzene, (---) 2-nitrotoluene, (---) 2,4-dinitrotoluene and (—) blank], $\lambda_{ex} = 500$ nm. (c) Photographs showing the fluorescence of the films of a 1 : 1 mixture of C_3OPV and C_3PBI before and after exposure to different volatile aromatic compounds.

the C_3PBI fibres, thus activating the C_3OPV emission upon excitation at 375 nm. The emission intensity revival monitored at 550 nm with time was found to depend upon the electron donating ability of the amines used (Fig. 8a). For the first 120 seconds of exposure, around a 5-fold increase in the emission

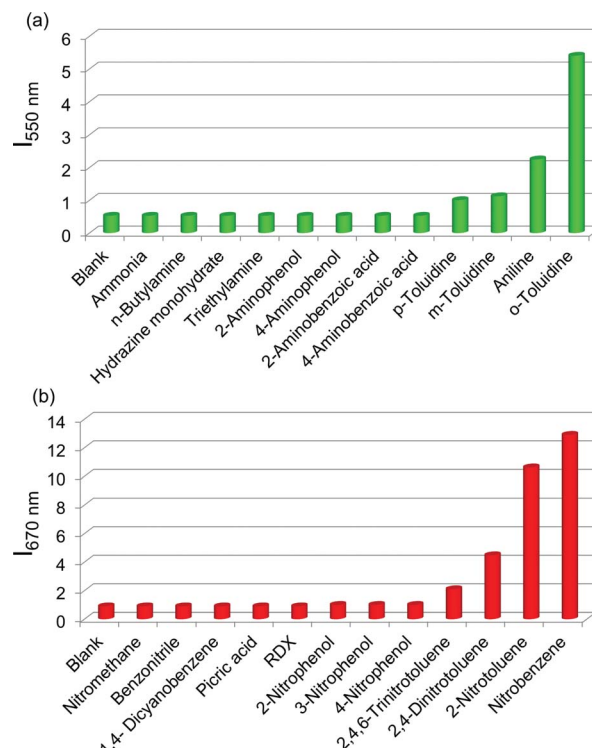


Fig. 7 Selectivity plots for the vapour phase detection of different volatile (a) amines and (b) nitro compounds using films prepared from a 1 : 1 mixture of C_3OPV and C_3PBI . The emission of C_3OPV was monitored at 550 nm ($\lambda_{ex} = 375$ nm) for the aromatic amine exposed films and that of C_3PBI was monitored at 670 nm ($\lambda_{ex} = 500$ nm) in the case of the nitro compound exposed films. In all these studies, the films were exposed to VOCs for 2 min.



intensity for *o*-toluidine was observed, while only a 2-fold increase was noticed for aniline. The inductive effect of the electron donating methyl group in *o*-toluidine makes it a better donor than aniline. The inductive effect decreases in the case of *m*-toluidine as the methyl group is far from the amino group. Not only the electron donating ability of the different amines but also the vapour pressure of the different amines play an important role in the selective detection of *o*-toluidine. The vapour pressure of *o*-toluidine at 25 °C is around 200 Pa and that of aniline and *m*-toluidine is around 89 and 17 Pa, respectively. This high value of the vapour pressure for *o*-toluidine and the electron donating positive inductive effect of the methyl group result in a fast response upon interaction with a film of the mixed assembly.

When vapours of nitroaromatic compounds such as nitrobenzene and nitrotoluene are exposed to the supercoiled fibres of C_3 OPV and C_3 PBI, a red emission was observed. Electron deficient nitroaromatics can have a strong CT interaction with the electron rich C_3 OPV fibres thereby inhibiting the weak interfacial PET from the C_3 OPV fibres to the C_3 PBI fibres upon excitation of the later at 500 nm. Hence the interaction between the C_3 OPV and C_3 PBI stacks becomes weaker, thereby the C_3 PBI emission is activated by a favouring of the more energetically feasible PET from C_3 OPV to the electron accepting nitroaromatic compounds. In this case also, the sensitivity depends upon both the electron accepting ability and the vapour pressure of the nitro compounds. This is evident from a plot of the emission intensity monitored at 670 nm with the time of exposure (Fig. 8b). It was observed that for the first minute of the exposure, nitrobenzene and 2-nitrotoluene showed an almost equal amount of emission recovery. However, upon extended exposure, nitrobenzene provided more emission revival than the nitrotoluene because of its high vapour pressure (20 Pa) and electron accepting ability. Compared to nitrobenzene, the presence of an electron donating methyl group reduces the electron accepting ability of *o*-nitrotoluene. At the same time, molecules such as DNT and TNT, which are more electron deficient than nitrobenzene, showed less response with the film. This observation is explained on the basis of the difference in the vapour pressure of these nitroaromatics. The vapour pressure of TNT and DNT is 0.0165 and 0.0079 Pa, respectively, which is much less than the vapour pressures of nitrobenzene (20 Pa) and 2-nitrotoluene (38 Pa).

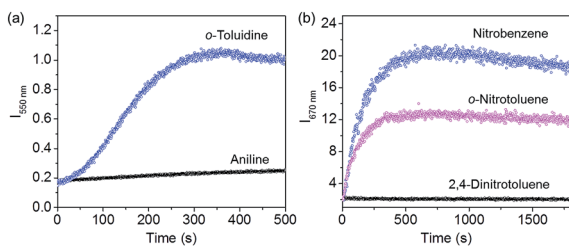


Fig. 8 Plots of the emission intensity (a) at 550 nm ($\lambda_{\text{ex}} = 375$ nm) and (b) at 670 nm ($\lambda_{\text{ex}} = 500$ nm) as a function of time after exposing a film prepared from a 1 : 1 mixture of C_3 OPV and C_3 PBI to the vapour of aromatic amines and nitroaromatics, respectively.

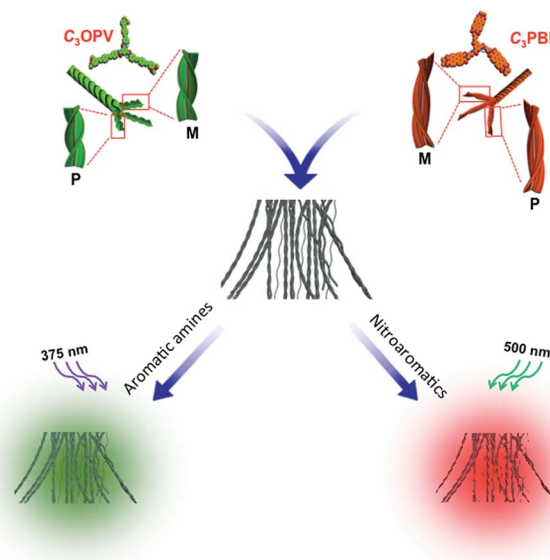


Fig. 9 Schematic illustration of the fluorescence 'turn-off/turn-on' mechanism of the self-sorted fibres of a 1 : 1 mixture of C_3 OPV and C_3 PBI on exposure to different VOCs.

The overall process for the sensing of VOCs by supercoiled self-stacks of C_3 OPV and C_3 PBI is schematically shown in Fig. 9. The C_3 symmetrical OPV and PBI prefer to form columnar helical assemblies of self-sorted stacks. The C_3 OPV stacks (green) and the C_3 PBI stacks (red), due to weak interfacial CT interactions, bundle together to form supercoiled fibres (black) in which the fluorescence is quenched by PET between the donor-acceptor self-sorted fibres. The PET process is subsequently perturbed by exposing the fibres to strong donor or acceptor molecules, resulting in respective fluorescence signals from C_3 OPV or C_3 PBI.

Conclusions

By taking advantage of self-sorting at the molecular level and electronic interactions at the macroscopic level, we could design nonfluorescent supercoiled fibres of C_3 OPV and C_3 PBI molecules. The self-sorting is facilitated by differences in the self-assembly pathways of the individual molecules wherein C_3 OPV followed an isodesmic model and C_3 PBI preferred a cooperative mechanism. Interfacial PET between the self-sorted fibres resulted in the quenching of the initial fluorescence of the molecules, which could be perturbed by exposure to VOCs, especially electron rich compounds such as aromatic amines and electron deficient compounds such as nitroaromatics. Thus, the green emission of C_3 OPV appeared when the film was exposed to *o*-toluidine and the red emission of C_3 PBI was obtained by exposing the film to nitroaromatic vapours. The extent of the emission revival depends on the electron donating ability of the aromatic amines and the electron withdrawing ability of the nitroaromatics, in addition to the vapour pressure of the molecules. The fluorescence "turn-off/turn-on" features of the supercoiled supramolecular fibres of the self-sorted donor-acceptor system described here provide



the ability to detect *o*-toluidine of metabolic origin, which is a known lung cancer marker.

Acknowledgements

We thank the Council of Scientific and Industrial Research (CSIR 12 FYP M2D-CSC-0134), Government of India for financial support. A.A. is grateful for a J. C. Bose Fellowship from the Department of Science and Technology (DST), Government of India. A.S. and K.K. are thankful for research fellowships from the CSIR, Government of India. V.K.P. thanks DST, Government of India for a Young Scientist Fellowship. The authors gratefully acknowledge Dr S. Seki and Dr A. Gopal, Osaka University, Japan for photoelectron yield spectroscopy analyses and Ms. M. V. Chinju Govind and Mr J. S. Kiran CSIR-NIIST for the femto-second pump-probe spectroscopy measurements and the artwork, respectively.

Notes and references

- (a) B. Buszewski, M. Keşy, T. Ligor and A. Amann, *Biomed. Chromatogr.*, 2007, **21**, 553–566; (b) A. W. Boots, J. J. B. N. van Berkel, J. W. Dallinga, A. Smolinska, E. F. Wouters and F. J. van Schooten, *J. Breath Res.*, 2012, **6**, 027108; (c) Y. Y. Broza and H. Haick, *Nanomedicine*, 2013, **8**, 785–806.
- (a) K. Riedel, G. Scherer, J. Engl, H.-W. Hagedorn and A. R. Tricker, *J. Anal. Toxicol.*, 2006, **30**, 187–195; (b) G. Preti, J. N. Labows, J. G. Kostelc, S. Aldinger and R. Daniele, *J. Chromatogr. B: Biomed. Sci. Appl.*, 1988, **432**, 1–11.
- (a) T. M. Swager and J. H. Wosnick, *MRS Bull.*, 2002, **27**, 446–450; (b) S. J. Toal and W. C. Trogler, *J. Mater. Chem.*, 2006, **16**, 2871–2883; (c) K. Sakakibara, J. P. Hill and K. Ariga, *Small*, 2011, **7**, 1288–1308; (d) Z. Hu, B. J. Deibert and J. Li, *Chem. Soc. Rev.*, 2014, **43**, 5815–5840; (e) K. K. Kartha, A. Sandeep, V. K. Praveen and A. Ajayaghosh, *Chem. Rec.*, 2015, **15**, 252–265; (f) S. Shanmugaraju and P. S. Mukherjee, *Chem.–Eur. J.*, 2015, **21**, 6656–6666.
- Nanoarchitectonics deal with interaction and organisation of nanoscale structures that cause emergence of new functionality, for details see: (a) S. Ishihara, J. Labuta, W. Van Rossom, D. Ishikawa, K. Minami, J. P. Hill and K. Ariga, *Phys. Chem. Chem. Phys.*, 2014, **16**, 9713–9746; (b) K. Ariga, Q. Ji, W. Nakanishi, J. P. Hill and M. Aono, *Mater. Horiz.*, 2015, **2**, 406–413; (c) M. Aono and K. Ariga, *Adv. Mater.*, 2016, **28**, 989–992; (d) K. Ariga, J. Li, J. Fei, Q. Ji and J. P. Hill, *Adv. Mater.*, 2016, **28**, 1251–1286.
- (a) Y. Che, X. Yang, S. Loser and L. Zang, *Nano Lett.*, 2008, **8**, 2219–2223; (b) Y. Liu, K.-R. Wang, D.-S. Guo and B.-P. Jiang, *Adv. Funct. Mater.*, 2009, **19**, 2230–2235; (c) H. Peng, L. Ding, T. Liu, X. Chen, L. Li, S. Yin and Y. Fang, *Chem.–Asian J.*, 2012, **7**, 1576–1582; (d) J. Kumpf, J. Freudenberg, S. T. Schwaebel and U. H. F. Bunz, *Macromolecules*, 2014, **47**, 2569–2573; (e) S. Rochat and T. M. Swager, *Angew. Chem., Int. Ed.*, 2014, **53**, 9792–9796; (f) A. Mallick, B. Garai, M. A. Addicoat, P. S. Petkov, T. Heine and R. Banerjee, *Chem. Sci.*, 2015, **6**, 1420–1425.
- (a) A. Rose, Z. Zhu, C. F. Madigan, T. M. Swager and V. Bulović, *Nature*, 2005, **434**, 876–879; (b) Y. Che, D. E. Gross, H. Huang, D. Yang, X. Yang, E. Discekici, Z. Xue, H. Zhao, J. S. Moore and L. Zang, *J. Am. Chem. Soc.*, 2012, **134**, 4978–4982; (c) W. Zhu, W. Li, C. Wang, J. Cui, H. Yang, Y. Jiang and G. Li, *Chem. Sci.*, 2013, **4**, 3583–3590; (d) K. K. Kartha, A. Sandeep, V. C. Nair, M. Takeuchi and A. Ajayaghosh, *Phys. Chem. Chem. Phys.*, 2014, **16**, 18896–18901.
- (a) K. K. Kartha, S. S. Babu, S. Srinivasan and A. Ajayaghosh, *J. Am. Chem. Soc.*, 2012, **134**, 4834–4841; (b) V. Bhalla, H. Arora, H. Singh and M. Kumar, *Dalton Trans.*, 2013, **42**, 969–997; (c) G. Hong, J. Sun, C. Qian, P. Xue, P. Gong, Z. Zhang and R. Lu, *J. Mater. Chem. C*, 2015, **3**, 2371–2379.
- (a) M. M. Safont-Sempere, G. Fernández and F. Würthner, *Chem. Rev.*, 2011, **111**, 5784–5814; (b) K. Osowska and O. Miljanić, *Synlett*, 2011, 1643–1648; (c) C. Rest, M. Mayoral and G. Fernández, *Int. J. Mol. Sci.*, 2013, **14**, 1541–1565.
- (a) J. R. Moffat and D. K. Smith, *Chem. Commun.*, 2009, 316–318; (b) A. Pal, P. Besenius and R. P. Sijbesma, *J. Am. Chem. Soc.*, 2011, **133**, 12987–12989; (c) K. L. Morris, L. Chen, J. Raeburn, O. R. Sellick, P. Cotanda, A. Paul, P. C. Griffiths, S. M. King, R. K. O. R. Reilly, L. C. Serpell and D. J. Adams, *Nat. Commun.*, 2013, **4**, 1480; (d) K. Sato, Y. Itoh and T. Aida, *Chem. Sci.*, 2014, **5**, 136–140.
- (a) J. van Herrikhuyzen, A. Syamakumari, A. P. H. J. Schenning and E. W. Meijer, *J. Am. Chem. Soc.*, 2004, **126**, 10021–10027; (b) K. Sugiyasu, S. Kawano, N. Fujita and S. Shinkai, *Chem. Mater.*, 2008, **20**, 2863–2865; (c) A. Das and S. Ghosh, *Chem. Commun.*, 2011, **47**, 8922–8924; (d) S. Prasanthkumar, S. Ghosh, V. C. Nair, A. Saeki, S. Seki and A. Ajayaghosh, *Angew. Chem., Int. Ed.*, 2015, **54**, 946–950; (e) B. Narayan, K. K. Bejagam, S. Balasubramanian and S. J. George, *Angew. Chem., Int. Ed.*, 2015, 13245–13249.
- (a) M. Kumar, K. Venkata Rao and S. J. George, *Phys. Chem. Chem. Phys.*, 2014, **16**, 1300–1313; (b) A. Das and S. Ghosh, *Angew. Chem., Int. Ed.*, 2014, **53**, 2038–2054.
- (a) T. Aida, E. W. Meijer and S. I. Stupp, *Science*, 2012, **335**, 813–817; (b) L. Maggini and D. Bonifazi, *Chem. Soc. Rev.*, 2012, **41**, 211–241; (c) C. Kulkarni, S. Balasubramanian and S. J. George, *ChemPhysChem*, 2013, **14**, 661–673; (d) R. D. Mukhopadhyay and A. Ajayaghosh, *Science*, 2015, **349**, 241–242.
- For interfacial charge transfer in co-assembly, see: (a) L. Zang, *Acc. Chem. Res.*, 2015, **48**, 2705–2714; (b) J. López-Andarias, M. J. Rodríguez, C. Atienza, J. L. López, T. Mikie, S. Casado, S. Seki, J. L. Carrascosa and N. Martín, *J. Am. Chem. Soc.*, 2015, **137**, 893–897.
- (a) Z. Chen, A. Lohr, C. R. Saha-Möller and F. Würthner, *Chem. Soc. Rev.*, 2009, **38**, 564–584; (b) T. F. A. de Greef, M. M. J. Smulders, M. Wolffs, A. P. H. J. Schenning, R. P. Sijbesma and E. W. Meijer, *Chem. Sci.*, 2009, **109**, 5687–5754; (c) M. M. J. Smulders, M. M. L. Nieuwenhuizen,



- T. F. A. de Greef, P. van der Schoot, A. P. H. J. Schenning and E. W. Meijer, *Chem.–Eur. J.*, 2010, **16**, 362–367.
- 15 (a) M. M. J. Smulders, A. P. H. J. Schenning and E. W. Meijer, *J. Am. Chem. Soc.*, 2008, **130**, 606–611; (b) S. Cantekin, T. F. A. de Greef and A. R. A. Palmans, *Chem. Soc. Rev.*, 2012, **41**, 6125–6137; (c) B. Narayan, C. Kulkarni and S. J. George, *J. Mater. Chem. C*, 2013, **1**, 626–629.
- 16 (a) J. van Herrikhuyzen, P. Jonkheijm, A. P. H. J. Schenning and E. W. Meijer, *Org. Biomol. Chem.*, 2006, **4**, 1539–1545; (b) I. A. W. Filot, A. R. A. Palmans, P. A. J. Hilbers, R. A. van Santen, E. A. Pidko and T. F. A. de Greef, *J. Phys. Chem. B*, 2010, **114**, 13667–13674.
- 17 (a) P. A. Korevaar, T. F. A. de Greef and E. W. Meijer, *Chem. Mater.*, 2014, **26**, 576–586; (b) C. Rest, R. Kandanelli and G. Fernández, *Chem. Soc. Rev.*, 2015, **44**, 2543–2572.
- 18 (a) F. García and L. Sánchez, *J. Am. Chem. Soc.*, 2012, **134**, 734–742; (b) U. Mayerhöffer and F. Würthner, *Chem. Sci.*, 2012, **3**, 1215–1220; (c) J. M. Malicka, A. Sandeep, F. Monti, E. Bandini, M. Gazzano, C. Ranjith, V. K. Praveen, A. Ajayaghosh and N. Armaroli, *Chem.–Eur. J.*, 2013, **19**, 12991–13001; (d) C. Kulkarni, K. K. Bejagam, S. P. Senanayak, K. S. Narayan, S. Balasubramanian and S. J. George, *J. Am. Chem. Soc.*, 2015, **137**, 3924–3932.
- 19 A nucleation–elongation model was proposed for PBI dyes linked to tris(dodecyloxy)benzamide with ethyl, propyl and pentyl spacer groups. This study demonstrates the importance of the alkyl spacer length on determining the self-assembly pathways of H-bonded PBI dyes. For details, see: (a) S. Ogi, V. Stepanenko, K. Sugiyasu, M. Takeuchi and F. Würthner, *J. Am. Chem. Soc.*, 2015, **137**, 3300–3307; (b) S. Ogi, V. Stepanenko, J. Thein and F. Würthner, *J. Am. Chem. Soc.*, 2016, **138**, 670–678.
- 20 (a) M. P. Lightfoot, F. S. Mair, R. G. Pritchard and J. E. Warren, *Chem. Commun.*, 1999, 1945–1946; (b) Y. Yasuda, E. Iishi, H. Inada and Y. Shirota, *Chem. Lett.*, 1996, 575–576; (c) P. J. M. Stals, J. C. Everts, R. de Bruijn, I. A. W. Filot, M. M. J. Smulders, R. Martín-Rapún, E. A. Pidko, T. F. A. de Greef, A. R. A. Palmans and E. W. Meijer, *Chem.–Eur. J.*, 2010, **16**, 810–821.
- 21 B. Rybtchinski, L. E. Sinks and M. R. Wasielewski, *J. Phys. Chem. A*, 2004, **108**, 7497–7505.
- 22 (a) Y. Che and L. Zang, *Chem. Commun.*, 2009, 5106–5108; (b) B.-P. Jiang, D.-S. Guo and Y. Liu, *J. Org. Chem.*, 2010, **75**, 7258–7264.

