




# Long-Term *In Vitro* Culture of the Syphilis Spirochete *Treponema pallidum* subsp. *pallidum*

Diane G. Edmondson,<sup>a</sup> Bo Hu,<sup>b</sup>  Steven J. Norris<sup>a,b</sup>

<sup>a</sup>Department of Pathology and Laboratory Medicine, McGovern Medical School, University of Texas Health Science Center at Houston, Houston, Texas, USA

<sup>b</sup>Department of Microbiology and Molecular Genetics, McGovern Medical School, University of Texas Health Science Center at Houston, Houston, Texas, USA

**ABSTRACT** Investigation of *Treponema pallidum* subsp. *pallidum*, the spirochete that causes syphilis, has been hindered by an inability to culture the organism continuously *in vitro* despite more than a century of effort. In this study, long-term logarithmic multiplication of *T. pallidum* was attained through subculture every 6 to 7 days and periodic feeding using a modified medium (*T. pallidum* culture medium 2 [TpCM-2]) with a previously described microaerobic, rabbit epithelial cell co-cultivation system. Currently, cultures have maintained continuous growth for over 6 months with full retention of viability as measured by motility and rabbit infectivity. This system has been applied successfully to the well-studied Nichols strain of *T. pallidum*, as well as to two recent syphilis isolates, UW231B and UW249B. Light microscopy and cryo-electron microscopy showed that *in vitro*-cultured *T. pallidum* retains wild-type morphology. Further refinement of this long-term subculture system is expected to facilitate study of the physiological, genetic, pathological, immunologic, and antimicrobial susceptibility properties of *T. pallidum* subsp. *pallidum* and closely related pathogenic *Treponema* species and subspecies.

**IMPORTANCE** Syphilis, a sexually transmitted disease with a global distribution, is caused by a spiral-shaped bacterium called *Treponema pallidum* subspecies *pallidum*. Previously, *T. pallidum* was one of the few major bacterial pathogens that had not been cultured long-term *in vitro* (in a test tube), greatly hindering efforts to better understand this organism and the disease that it causes. In this article, we report the successful long-term cultivation of *T. pallidum* in a tissue culture system, a finding that is likely to enhance our ability to obtain new information applicable to the diagnosis, treatment, and prevention of syphilis.

**KEYWORDS** *Treponema pallidum*, cell culture, cell structure, electron microscopy, infectivity, physiology, spirochetes

Syphilis is a multistage sexually transmitted infection of worldwide importance, with estimates of total disease burden ranging from 18 to 56 million individuals (1–4). *Treponema pallidum* subsp. *pallidum* (*T. pallidum*), the causative agent of syphilis, was first identified by Schaudinn and Hoffman in 1905 (5, 6) as “very light, thin spiraled microorganisms, turning around their largest length and moving back and forth.” Rapid progress in the study of this bacterium was made within 5 years, with the verification of the presence of spirochetes in experimentally infected animals by Metchnikoff and Roux (7), the invention of dark-field microscopy for easy visualization of *T. pallidum* by Karl Landsteiner, development of the first serological test for syphilis by von Wassermann et al. (8), and the introduction of arsphenamine as an effective, relatively nontoxic antisyphilis agent by Paul Ehrlich (9, 10). Successful culture of *T. pallidum* was reported almost immediately and during the subsequent decades (11, 12), but these reports

Received 25 May 2018 Accepted 30 May 2018 Published 26 June 2018

**Citation** Edmondson DG, Hu B, Norris SJ. 2018. Long-term *in vitro* culture of the syphilis spirochete *Treponema pallidum* subsp. *pallidum*. mBio 9:e01153-18. <https://doi.org/10.1128/mBio.01153-18>.

**Editor** Patricia A. Rosa, NIAID, NIH

**Copyright** © 2018 Edmondson et al. This is an open-access article distributed under the terms of the [Creative Commons Attribution 4.0 International license](https://creativecommons.org/licenses/by/4.0/).

Address correspondence to Steven J. Norris, [Steven.J.Norris@uth.tmc.edu](mailto:Steven.J.Norris@uth.tmc.edu).

This article is a direct contribution from a Fellow of the American Academy of Microbiology. Solicited external reviewers: Alan Barbour, University of California, Irvine; Sheila Lukehart, University of Washington; Justin Radolf, University of Connecticut Health Center.

were found to be either irreproducible or the result of contamination with nonpathogenic *Treponema* species that colonize human skin (13). During the 1970s, progress was made in characterizing some *T. pallidum* physiological properties, most notably its microaerophilic nature and improved survival in the presence of mammalian cells (14).

In 1981, Fieldsteel, Cox, and Moeckli (15) reported the consistent occurrence of up to 100-fold multiplication of *T. pallidum* in a coculture system consisting of Sf1Ep cottontail rabbit epithelial cells, a modified tissue culture medium with heat-inactivated fetal bovine serum, dithiothreitol (DTT) as a reducing agent, and a microaerobic atmosphere containing 1.5% O<sub>2</sub>. These results were reproduced in hundreds of experiments (primarily by the Cox and Norris groups) and reported in over 25 publications (reviewed in references 14 and 16). However, treponemal multiplication and survival were limited to 12 to 18 days, despite efforts to refine this system. Attempts to subculture *T. pallidum* provided little improvement in the cumulative fold increase or survival of the bacterium (14, 16, 17). The same limitation has existed for the closely related organisms that cause yaws (*T. pallidum* subsp. *pertenue*), bejel (*T. pallidum* subsp. *endemicum*), pinta (*Treponema carateum*), and venereal spirochetosis in rabbits and hares (*T. paraluisuniculi*) (18, 19). The inability to culture these organisms continuously *in vitro* has necessitated their propagation in rabbits for use in research, greatly hindering investigation of these important pathogens.

In this study, we utilized a modification of the method described by Fieldsteel et al. (15, 16) to achieve reproducible, long-term multiplication of *T. pallidum* subsp. *pallidum* in a tissue culture system. In ongoing experiments, *T. pallidum* multiplication and full viability have been maintained for up to 27 passages over a period of 6 months. Results obtained with the Nichols reference strain have been verified using two recent *T. pallidum* isolates. The *in vitro*-cultured treponemes retained their characteristic ultrastructure (as determined by cryoelectron microscopy) and full infectivity (as demonstrated by rabbit inoculation experiments). The availability of this culture system is likely to lead to a better understanding of *T. pallidum* physiology, structure, gene expression, regulatory pathways, pathogenesis, immunologic properties, and antimicrobial susceptibility.

## RESULTS

**Long-term culture of *T. pallidum*.** *T. pallidum* subsp. *pallidum* Nichols, isolated from the cerebrospinal fluid of a neurosyphilis patient in 1912 (20) and the reference strain for this subspecies, was utilized for most experiments, whereas strains UW231B and UW249B, isolated from the blood of untreated syphilis patients in Seattle, WA, were used to examine the applicability of the culture method to other syphilis strains. These and (to our knowledge) all other available *T. pallidum* strains were isolated and propagated by inoculation of rabbits. The *in vitro* cultures were initiated with frozen preparations of *T. pallidum* previously extracted from infected rabbit testes and stored at -80°C.

In preliminary studies, multiple modifications of the *T. pallidum* cultivation medium (TpCM) described by Cox (16) were examined to determine their effects on treponemal survival and growth. The basal medium of TpCM consists of Eagle's minimal essential medium (MEM) with added nonessential amino acids. We found that replacement of the Eagle's MEM component with the more complex CMRL 1066 tissue culture medium (21) resulted in increased yields and improved retention of motility of *T. pallidum* during primary culture *in vitro*. The CoCl<sub>2</sub>, cocarboxylase, catalase, and bovine superoxide dismutase components of TpCM did not have a measurable effect on *T. pallidum in vitro* in our analysis and thus were omitted from our formulation. We have named the modified medium TpCM-2 to reflect its similarity to the medium described by Cox (16).

A pilot experiment provided a positive indication that prolonged *in vitro* multiplication of *T. pallidum* may be possible with TpCM-2 and Sf1Ep cottontail rabbit epithelial cells. In this study, two different series of subcultures were initiated from a primary *T. pallidum* Nichols culture: one with sequential subcultures on days 8, 16, and 28, and the other on days 18 and 26. Significant multiplication occurred in each of the

**TABLE 1** Outline of *T. pallidum* long-term-cultivation parameters

Parameter
Six-well cluster dishes (9 cm <sup>2</sup> /well)
No. of Sf1Ep cells/well, $1 \times 10^5$
Vol of TpCM-2 medium, 2 to 4 ml
Preincubation of medium and Sf1Ep cells in an atmosphere of 1.5% O <sub>2</sub> and 5% CO <sub>2</sub> , with N <sub>2</sub> making up the balance
Inoculation with $0.5\text{--}1.25 \times 10^6$ <i>T. pallidum</i> organisms per well, using triplicate wells per condition
Incubation for 6–7 days at 34°C in an atmosphere of 1.5% O <sub>2</sub> and 5% CO <sub>2</sub> , with N <sub>2</sub> making up the balance
Replacement of 50% of medium after 3–4 days (optional)
Trypsin/EDTA treatment of “donor” culture
Inoculation of “recipient” culture with 0.1 ml–0.5 ml of trypsinized “donor” culture
Subculture at 6–7-day intervals

subcultures, except for the last transfer in the series consisting of days 8, 16, and 28 (see Fig. S1 in the supplemental material). In addition, motility was retained at above 50% until 28 days. Cumulative fold increase (the product of the fold increase values for each subculture) provided a measure of the sustained multiplication under these conditions (Fig. S1C). While the primary culture increase reached a maximum of 57-fold, the two subculture series achieved cumulative fold increases of 978 and 1,105, respectively. Motility in the subcultures was lost by day 36. We therefore reasoned that prolonged survival and growth of *T. pallidum* may be obtained by shortening the subculture interval and thus maintaining conditions that are more homeostatic.

The current culture procedure (outlined in Table 1) utilizes coincubation of *T. pallidum* with Sf1Ep cells in TpCM-2 at 34°C in a microaerobic atmosphere consisting of 1.5% O<sub>2</sub> and 5% CO<sub>2</sub>, with the balance consisting of N<sub>2</sub>. Under these conditions, ~90% of the treponemes adhere to the surface of the Sf1Ep cells and multiply by binary fission. *T. pallidum* organisms were dissociated from the Sf1Ep cells by treatment with trypsin and EDTA, and the resulting suspension was used for quantitation by dark-field microscopy and the transfer of organisms to fresh subcultures. In some experiments, a portion of the medium was replaced with fresh TpCM-2 at 3 to 4 days. The typical subculture interval was 6 to 7 days, although this period could be prolonged if the *T. pallidum* concentration was low. Triplicate cultures in 6-well cluster dishes were utilized for each time point with each culture being used to inoculate a separate subculture, thus maintaining three parallel biological replicates. Details regarding the methodologies utilized are described in Materials and Methods.

Using these conditions, all five of the *T. pallidum* cultivation experiments that we have undertaken to date have exhibited consistent, long-term multiplication with retention of motility (Table 2); four of these cultures are still ongoing. The current results of our longest-ongoing *T. pallidum* culture experiment (experiment 1 [Exp. 1]) are depicted in Fig. 1. The numbers of *T. pallidum* organisms per culture are shown in

**TABLE 2** Summary of *T. pallidum* subculture experiments

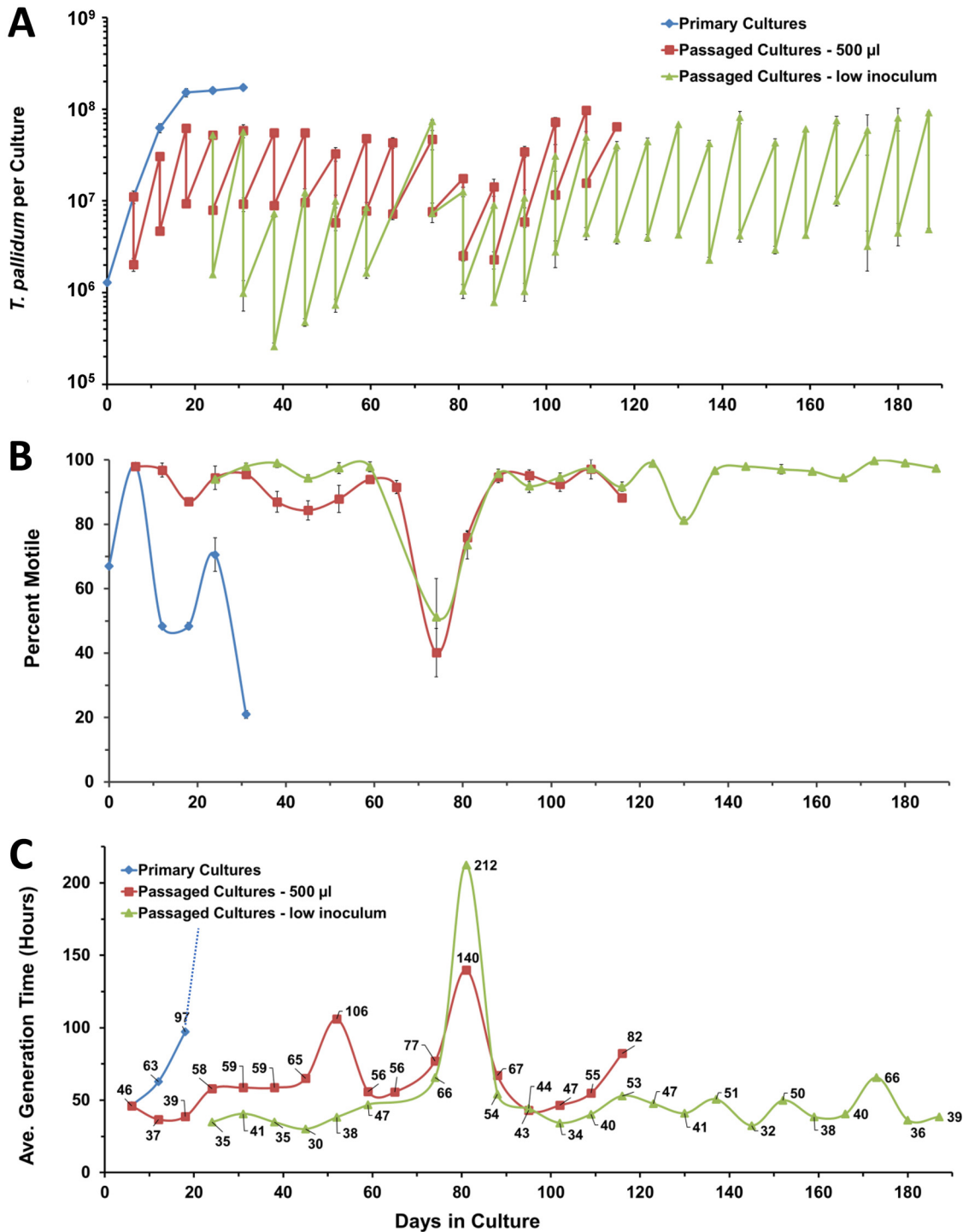
Experiment	Status	Strain	No. of days in culture	Passage no.	Cumulative fold increase	No. of generations	Avg generation time (h) <sup>a</sup>	Minimum generation time (h) <sup>b</sup>
1	Ongoing	Nichols	187	26	$1.1 \times 10^{30}$	100	45	33
2	Ongoing	Nichols	189	27	$2.4 \times 10^{31}$	104	44	33
3	Ongoing	Nichols <sup>c</sup>	119	17	$2.4 \times 10^{19}$	64	43	36
4	Ongoing	UW231B	70	9	$2.6 \times 10^9$	31	55	44
5	Complete	UW249B <sup>d</sup>	40	6	$6.5 \times 10^7$	26	54.6	46

<sup>a</sup>Avg generation time = (time in hours)/(number of generations) for all days in culture, excluding the first culture period.

<sup>b</sup>Minimum generation time = average of the 5 lowest subculture generation times (3 for experiment 5).

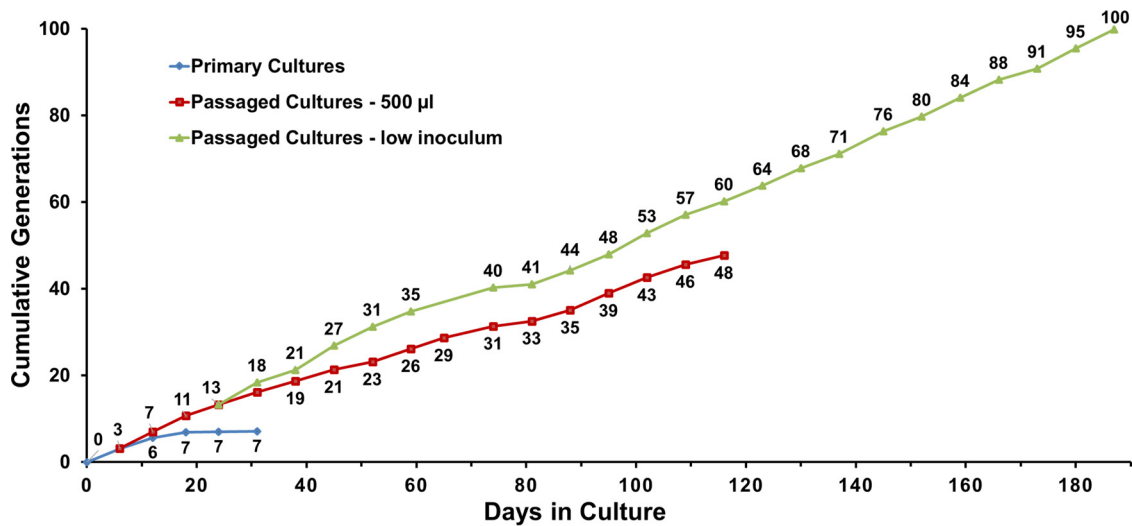
<sup>c</sup>Experiment 3 was initiated from frozen stocks of a day 54 culture from experiment 1. All other experiments were initiated from frozen preparations of rabbit-propagated *T. pallidum*.

<sup>d</sup>Experiment 5 was discontinued after day 40 because of fungal contamination.



**FIG 1** Long-term cultivation of *T. pallidum* subsp. *pallidum* Nichols in a tissue culture system (experiment 1). Primary cultures represent the results obtained without subculture. The 500- $\mu$ l passages used transfer of that volume for each subculture, whereas the low-inoculum passages used lower volumes (100  $\mu$ l to 250  $\mu$ l). (A) In this “sawtooth” plot, the number of *T. pallidum* organisms per culture upon harvest and the number inoculated in the next subculture are shown for each time point. (B) Percent motility provides a measure of viability. (C) Average (Ave.) generation time, representing the time in hours divided by  $\log_2$ (fold increase) for each time point. *T. pallidum* per-culture and percent motility values represent means  $\pm$  SE of results from three biological replicates.

the “sawtooth” graph in Fig. 1A, in which the mean numbers ( $\pm$  standard errors [SE]) of organisms harvested and inoculated in the subcultures are shown for each time point. In this and subsequent experiments, parallel nonpassaged (“primary”) cultures were included for comparison. During the first three subcultures, a volume of 0.5 ml

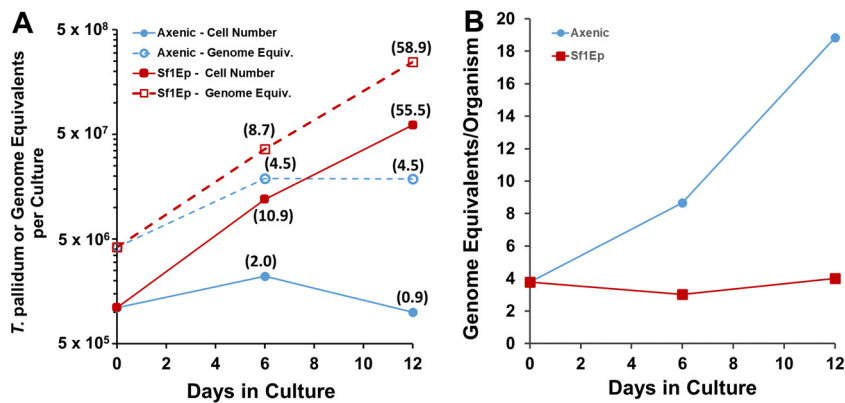


**FIG 2** Cumulative generations during *in vitro* culture of *T. pallidum* subsp. *pallidum* Nichols in experiment 1. Increases in the primary cultures occurred only within the first 12 days. The generations accumulated more rapidly in the low-inoculum cultures than in the 500- $\mu$ l inoculum cultures until the latter were discontinued on day 116.

(labeled “500  $\mu$ l,” from the total trypsinized culture volume of  $\sim$ 2.4 ml) was used. However, we noted that these cultures reached a maximum number of roughly  $5 \times 10^7$  *T. pallidum* organisms per culture and exhibited some loss of motility. Therefore, beginning on day 24, parallel subcultures were begun that contained a lower inoculum of 0.1 to 0.25 ml (“low inoculum”). The transferred volume was typically 0.25 ml for these cultures but was adjusted to a lower volume if a particularly high *T. pallidum* concentration was observed during a brief microscopic examination. Note that a given volume of trypsinized culture was used rather than adjustment of the inoculum to a certain number of bacteria (which would require an accurate microscopic concentration determination) to minimize the transfer time and thus the exposure to atmospheric levels of oxygen. A typical transfer time was 20 to 30 min.

In this representative experiment, the primary cultures multiplied exponentially for the first 12 days, at which time growth slowed and motility decreased (Fig. 1). In contrast, continued multiplication of *T. pallidum* occurred in each of the subsequent 25 subcultures, indicating that the replicative potential of the treponemes was retained. In addition, motility (as a measure of cellular viability) was generally maintained at a high level, whereas the motility of the primary cultures decreased dramatically on day 12 (Fig. 1B). A decrease in motility did occur in the subcultures on day 74, when the subculture interval was inadvertently extended to 9 days. However, viability recovered during the following two subcultures, indicating the outgrowth of a subset of organisms that had not been irreversibly damaged. The reduction in the percentage of motile organisms correlated with an increase in the average generation time over the 7-day period of the subsequent subculture (Fig. 1C). Thereafter, the growth of *T. pallidum* recovered to the prior rate. At the time of writing, this experiment had been ongoing for 187 days, or over 6 months.

The value corresponding to the cumulative generations for the high-inoculum (500- $\mu$ l) cultures lagged behind that obtained with the parallel low-inoculum cultures (Fig. 2). Excluding the variant subcultures on days 74 and 80, the average generation time ranged from 37 to 106 h for 0.5-ml-inoculum cultures (mean  $\pm$  standard deviation [SD] =  $63 \pm 18$  h) and from 30 to 66 h for the low-inoculum cultures ( $41 \pm 8$  h) for the time points shared by the two subculture series. A *t* test comparison showed that the generation time was significantly lower ( $P \leq 0.05$ ) in the subcultures receiving a lower inoculum, most likely because optimal multiplication was sustained for a longer time due to slower depletion of required nutrients or accumulation of toxic compounds. For this reason, the high-inoculum portion of this experiment was discontinued on day 116.



**FIG 3** Multiplication and genome replication of *T. pallidum* Nichols in Sf1Ep cocultures and axenic cultures. Fold increases are shown in parentheses. The axenic cultures were initiated in parallel with the Sf1Ep cocultures in experiment 1 (Table 2) (Fig. 1), using the same frozen stock of *T. pallidum*. (A) The number of *T. pallidum* organisms per culture increased only ~2-fold in axenic cultures but increased over 55-fold for cocultures with Sf1Ep cells. Genome equivalent (Equiv.) increases were similar to bacterial cell number increases for the Sf1Ep cocultures but were somewhat higher than the cell number increases for the axenic cultures. (B) Numbers of genome Equiv. per cell remained stable for the exponentially growing cocultures but increased for the axenic cultures. *T. pallidum* per-culture and genome equivalent values represent means  $\pm$  SE of results from triplicate cultures.

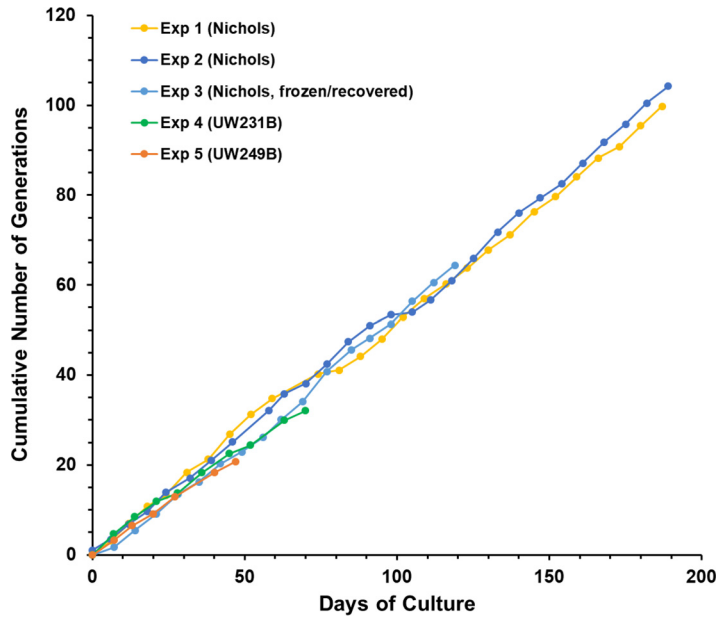
Very similar results were obtained in a replicate experiment (Exp. 2), which is ongoing at 189 days of culture and 27 subcultures (Fig. S2). Multiplication and motility have been consistently maintained except for a downturn on days 98 to 105 for unknown reasons, with a subsequent recovery. Overall, this experiment has shown a cumulative fold increase of  $2.4 \times 10^{31}$ , or 104 generations.

**Requirement for mammalian cells.** Experiments were performed to examine whether TpCM-2 medium alone could support the long-term survival and growth of *T. pallidum* Nichols in the absence of mammalian cells (i.e., in axenic cultures). Quantitative PCR was also used to determine the number of *T. pallidum* genome equivalents per culture during the course of these studies. The results of two experiments (Fig. 3; see also Fig. S3) were similar and showed that small (2.0-fold and 2.2-fold) but statistically significant ( $P$  values of 0.013 and 0.039) increases in the number of *T. pallidum* organisms occurred in axenic cultures during the first 6 days of culture. Motility was also maintained at high levels (99% and 95%) at this time point. However, the *T. pallidum* yield was not significantly higher than the inoculum on day 12 of culture, and motility had decreased (43% and 83%). Interestingly, the number of genome equivalents per cell increased dramatically in the axenic *T. pallidum* population, while remaining relatively stable in the actively multiplying *T. pallidum* population in the Sf1Ep cocultures. Thus, only modest multiplication (roughly 1 cell division) occurred in the axenic cultures in these experiments, but this limitation was apparently not due to the lack of genomic replication.

**Successful freezing and recovery of *in vitro*-cultured *T. pallidum*.** *In vitro*-cultured *T. pallidum* Nichols organisms from a subculture harvested on day 54 of Exp. 1 were frozen at  $-80^{\circ}\text{C}$  in TpCM-2 with 15% glycerol. The organisms were thawed 25 days later and used to inoculate fresh cultures (Exp. 3). The thawed *T. pallidum* exhibited only a 3.1-fold increase during the first 7-day culture period but consistently showed a high replication rate thereafter (e.g., a 14.1-fold increase, or 3.8 doublings, during the second 7-day period). This culture has been passaged continuously for 119 days (17 subcultures) and has undergone a  $2.4 \times 10^{19}$ -fold cumulative fold increase or 26 generations (Table 2; see also Fig. S4). Thus, *in vitro*-cultured *T. pallidum* can be successfully frozen and recovered, raising the possibility of continuous *in vitro* culture of *T. pallidum* without a need for rabbit inoculation.

**Culture of additional *T. pallidum* strains.** To determine whether this *in vitro* culture technique can be applied to other *T. pallidum* strains, we performed long-term



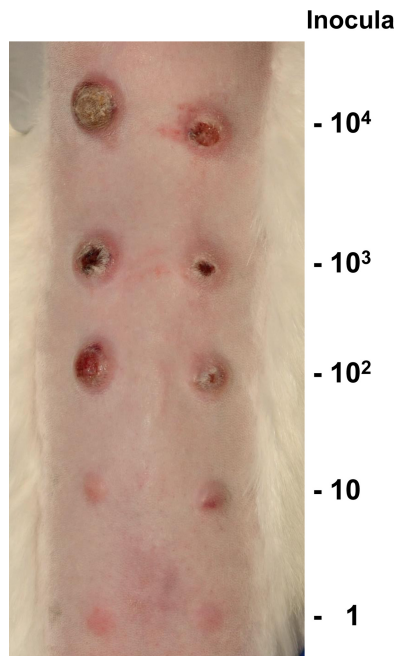


**FIG 4** Consistency of *T. pallidum* multiplication *in vitro*, as illustrated by cumulative generation values from experiments 1 to 5.

culture experiments with two recent syphilis isolates, UW231B and UW249B. These strains are members of the so-called SS14 clade of *T. pallidum* subsp. *pallidum* that is currently predominant in the United States, Europe, and many other regions (22–24). As with the prior studies with the Nichols strain, cultures were inoculated with frozen preparations of the UW231B and UW249B strains prepared from infected rabbit testes. The *in vitro* cultures of UW231B and UW249B exhibited long-term multiplication with retention of motility and wild-type morphology. The UW231B cultures are ongoing at 70 days of culture with 9 passages, with a cumulative fold increase of  $2.6 \times 10^9$  (31 generations) (Table 2; see also Fig. S5). Similar results were obtained with UW249B (Table 2; see also Fig. S6), but this culture series was discontinued on day 46 due to subsequent fungal contamination.

**Consistency of *in vitro* culture.** The growth curves in cumulative generations of the five long-term cultures listed in Table 2 are provided in Fig. 4. The results obtained were remarkably consistent, exhibiting very similar growth rates over time. At the time of this writing, two cultures (Exp. 1 and Exp. 2) have now been maintained for over 6 months (187 and 189 days, respectively). Additionally, over 20 “side” experiments have been performed with these long-term cultures and yielded similar results in terms of retention of viability and multiplication. Up to  $2.4 \times 10^{31}$ -fold increases, or 104 generations (cell divisions), have been observed in serially passaged cultures to date (Table 2), with no apparent change in growth rates or reduction in motility (as a measure of viability) over time. By comparison, growth in nonpassaged (primary) cultures was limited to 134- to 163-fold increases (7.2 to 7.3 generations), with loss of motility and decreases in cell numbers after 20 to 31 days.

The doubling time of a bacterium is defined as the time between cell divisions during optimal growth, i.e., the mid-log phase of exponential growth. Magnuson et al. (25) determined the doubling time of *T. pallidum* during rabbit infection to be 30 h using the relationship between dosage and the time of dermal lesion development, whereas Cumberland and Turner (26) calculated a remarkably similar value of 33 h based on extraction and enumeration of organisms at different time points following intratesticular inoculation of rabbits. In our *in vitro* cultures, we have thus far determined cell numbers only at the beginning and end of 6-to-7-day subculture intervals, likely including the lag, exponential, and early stationary phases. Therefore, we can



**FIG 5** *T. pallidum* subsp. *pallidum* Nichols organisms cultured *in vitro* for 116 days were fully infectious in the rabbit intradermal infection model. This photograph of one of the three rabbits in infectivity experiment A (Table 3) was taken on day 45 postinoculation. Paired sites were inoculated intradermally with the dosages shown. Sites inoculated with higher doses had undergone ulceration, as is typical of intradermal infections in rabbits.

calculate only the average generation time for each subculture, which could be expected to be higher than the exponential doubling time. The average generation times over the entire course of experiments 1 to 5 ranged from 44 to 52 h (Table 2). However, as noted previously, some subcultures had markedly higher generation times (see, e.g., Fig. 1C). To estimate the minimum generation time, the lowest five subculture generation time values were averaged for each experiment (Table 2); only the lowest 3 generation times were included for Exp. 5, because the experiment had only six time points. For the Nichols strain (experiments 1, 2, and 3), the minimum generation time values were 33.3, 33.3, and 35.6 h, respectively, whereas somewhat higher values were obtained with strains UW231B (43.8 h) and UW249B (45.8 h). The results for UW231B and UW249B are based on single experiments; therefore, we do not know at this point if this dissimilarity is due to experimental variation or to true biological differences in growth rates. Nevertheless, the results obtained to date indicate that the estimated multiplication rate of *T. pallidum in vitro* is quite similar to that which occurs during experimental rabbit infection.

**Infectivity.** To determine whether *T. pallidum* remained infectious during *in vitro* culture, two experiments (A and B) were performed in which serial dilutions of *T. pallidum* Nichols from 45- and 116-day *in vitro* cultures were inoculated intradermally into the shaved backs of rabbits, and the injection sites were observed daily for the development of lesions. Under these conditions, the time of lesion development is inversely proportional to the number of infectious organisms injected, i.e., higher dosages produce lesions more rapidly (25, 27, 28). The results demonstrated that the *in vitro*-cultured *T. pallidum* remained fully infectious, with dilutions calculated to contain as few as one organism yielding lesions (Fig. 5) (Table 3). The times of lesion development obtained in a prior study with freshly extracted, rabbit-derived *T. pallidum* Nichols were 6.2, 8.9, 14.8, and 17.2 days for inocula of  $10^5$ ,  $10^4$ ,  $10^3$ , and  $2 \times 10^2$ , respectively (28); the values obtained in the experiments reported here were comparable. In both experiments, sites injected with as few as 100 organisms developed lesions at all sites (Table 3). In experiment A (day 45 organisms), 2 of 4 sites inoculated with 10 *T. pallidum*

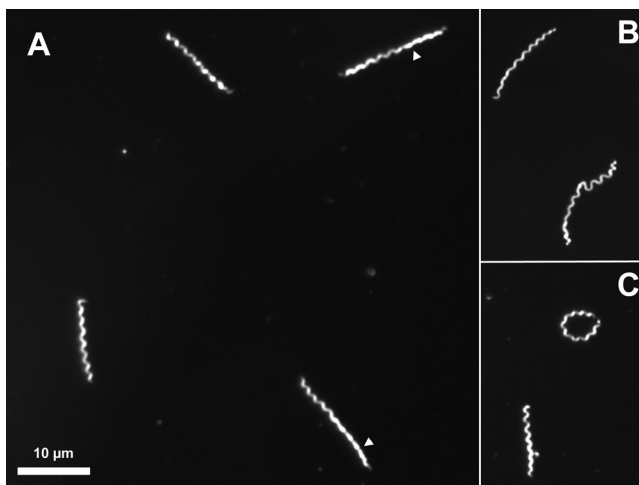


**TABLE 3** Retention of infectivity by *in vitro*-cultured *T. pallidum* Nichols

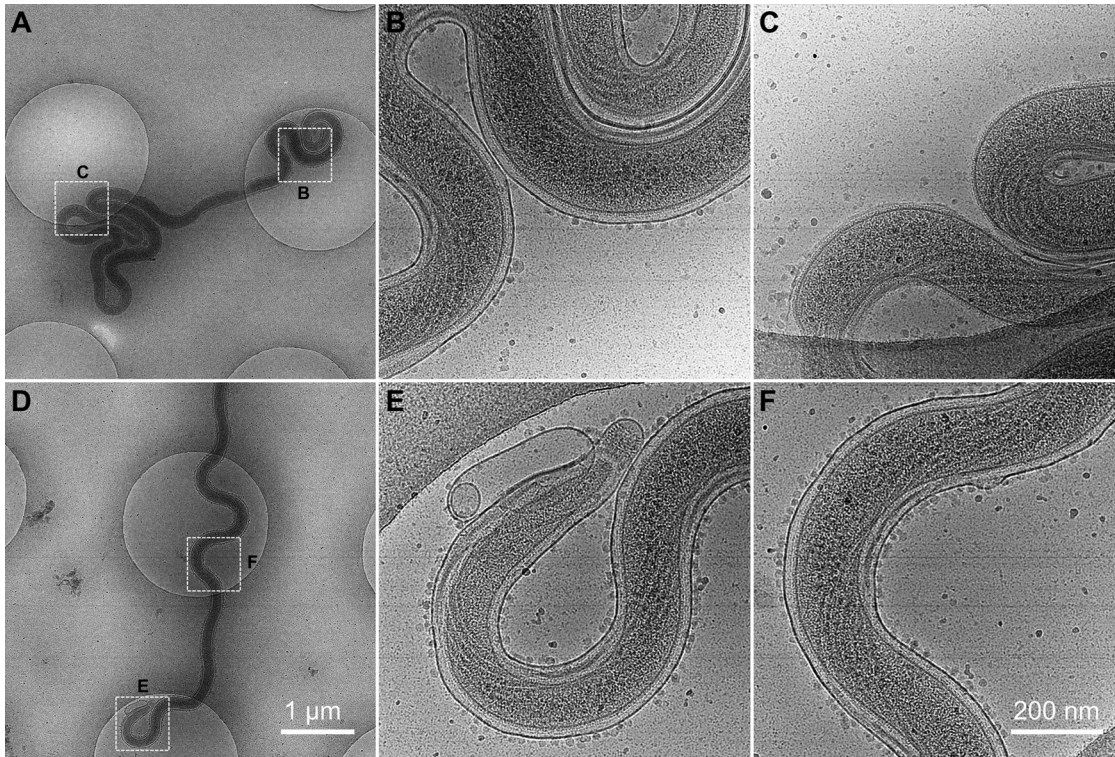
<i>T. pallidum</i> dosage per site	No. of lesions/ no. of sites inoculated	Day of lesion development	Avg day of lesion development
Experiment A: inoculum = 45-day culture			
460,000	4/4	7, 7, 7, 7	7.0
100,000	4/4	8, 8, 8, 8	8.0
10,000	4/4	9, 11, 11, 11	10.5
100	3/4	18, 19, 20	19.0
10	2/4	21, 26	23.5
Experiment B: inoculum = 116-day culture			
10,000	6/6	11, 11, 11, 11, 11, 12	11.2
1,000	6/6	11, 11, 11, 11, 11, 12	11.2
100	6/6	14, 16, 16, 17, 17, 18	16.3
10	6/6	23, 24, 24, 25, 29, 29	25.7
1	3/6	19, 36, 36	30.3

were positive; in experiment B (day 116 bacteria), all sites injected with 10 organisms were positive and 3 of 6 sites were positive at the one-organism injection sites. Thus, the 50% infective dose (ID<sub>50</sub>) of *in vitro*-cultured *T. pallidum* was 10 organisms in experiment A and was 1 organism in experiment B and can be considered to be  $\leq 10$  organisms. Needle aspirates from representative lesions at each dosage were consistently positive for motile treponemes by dark-field microscopy. Exceptions were the lesions from the lowest positive dosages in the two experiments, most likely because the immune response against the previously developing lesions limited the concentration of *T. pallidum* and the lesion size at the lower-dose sites (Fig. 5). Overall, these results demonstrate that *T. pallidum* organisms cultured *in vitro* in our studies retain their ability to multiply and to cause disease in a widely used animal model of syphilitic infection.

**Bacterial ultrastructure.** *T. pallidum* exhibited characteristic morphology and vigorous motility during the course of *in vitro* culture, as examined by dark-field microscopy (Fig. 6). Regions of helical and planar wave morphology, as have been described previously for both *T. pallidum* (29) and *Borrelia burgdorferi* (30), were observed. Some organisms had circularized to form ring-shaped structures. Tangled clusters of 2 to 10 bacteria were also present. All of these forms are also commonly observed in *T. palli-*



**FIG 6** Appearance of *in vitro*-cultured *T. pallidum* subsp. *pallidum* Nichols by dark-field light microscopy. This specimen was from a 200-day culture from experiment 1. (A) Four organisms with typical morphology, showing regions with planar, “flat wave” morphology (arrowheads). (B) Example of the inherent flexibility of *T. pallidum*. (C) Ring-shaped organism in which the two ends are joined. All of these forms are also commonly seen in *T. pallidum* organisms freshly extracted from rabbit tissue.

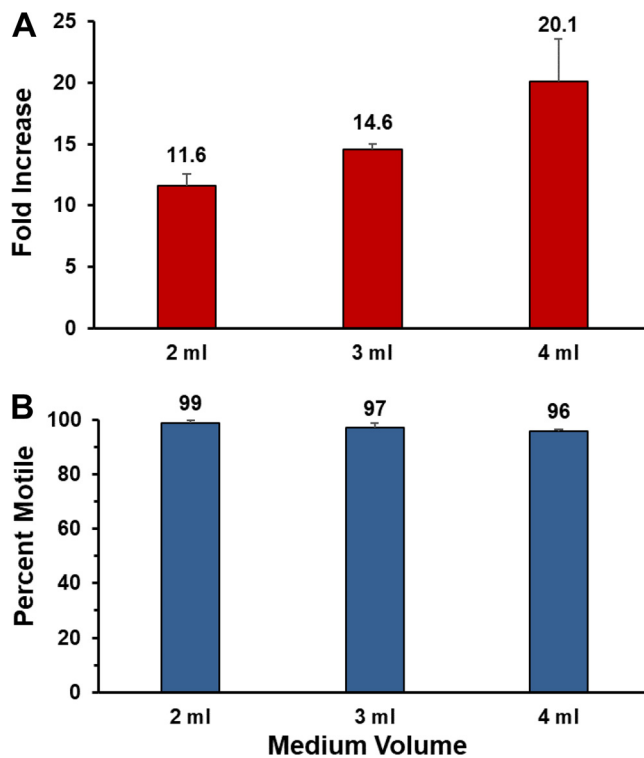


**FIG 7** Structure of *T. pallidum* subsp. *pallidum* Nichols following 54 days of *in vitro* culture, as determined by cryo-electron microscopy. (A and D) Two *T. pallidum* cells were imaged at low magnification (bar, 1  $\mu\text{m}$ ). (B, C, E, and F) Highlighted areas in panels A and D were imaged at high magnification (bar, 200 nm). B, intact region in the middle of the cell, showing the binding of small (~10-nm) particles or vesicles to the outer membrane surface; C, region of the cell in panel A in which the outer membrane has been stripped off. Note the lack of bound particles. E, end of the cell in panel D, showing the conical tip structure and a prominent membrane bleb, both typical of *T. pallidum* structure; F, intact region in middle of cell. The outlines of periplasmic flagella are clearly visible in this and other panels.

*dum* extracted from infected rabbit tissue (not shown). Cell length was variable, reflecting a mixture of organisms in different stages of cell elongation and division.

Cryo-electron microscopy (Cryo-EM) was utilized to determine whether *in vitro*-cultured *T. pallidum* retained the characteristic structure of the organism. As shown in Fig. 7 and the cryo-electron tomography (cryo-ET) series in Movies S1 and S2 in the supplemental material, *T. pallidum* Nichols cultured for 52 days *in vitro* exhibited a structure that was indistinguishable from that of *T. pallidum* extracted from infected rabbit tissue (31). The outer membrane, periplasmic flagella, peptidoglycan layer, inner membrane, chemotaxis arrays, conical tip organelles, and cytoplasmic filaments are all clearly discernible and identical in appearance to those in rabbit-derived specimens. Interestingly, particles ~10 nm in diameter resembling small vesicles appeared to be bound to the outer membrane (Fig. 7). Figure 7C shows a region of an organism in which the fragile outer membrane has been stripped off, as commonly occurs in *T. pallidum* preparations. That region is devoid of the small particles, indicating that the particles are binding to the outer membrane surface.

**Parameters affecting *in vitro* growth of *T. pallidum*.** We have begun the process of examining factors that affect *T. pallidum* multiplication in this *in vitro* system. It had been noted in previous studies that *T. pallidum* growth in primary cultures was limited when the concentration of bacteria was initially high (14–17). We reasoned that the availability of nutrients was limiting and therefore examined whether simply increasing the volume of TpCM-2 in the cultures could increase the yield and survival of *T. pallidum*. Increasing the volume of medium in 6-well cultures from 2 ml to 3 or 4 ml resulted in a concomitant increase in the yield per culture (Fig. 8). We therefore began to utilize 4 ml of TpCM-2 per culture in subsequent experiments.



**FIG 8** Effect of medium volume on *T. pallidum* multiplication in the Sf1Ep coculture system. Equal quantities of *T. pallidum* Nichols were inoculated into triplicate 9-cm<sup>2</sup> Sf1Ep cell cocultures containing 2, 3, or 4 ml of TpCM-2. The cultures were harvested and evaluated for *T. pallidum* fold increase and motility on day 7. (A) Increased culture yield with higher medium volumes. (B) High retention of motility in all cultures.

The yield per culture could also be increased by enlarging the size of the cultures from the 6-well cluster dish format (9-cm<sup>2</sup> surface area) to 75-cm<sup>2</sup> tissue culture flasks. Each 75-cm<sup>2</sup> flask has a 9.3-fold-higher surface area than a well in a 6-well cluster dish. A proportionately increased number of Sf1Ep cells, a higher medium volume (15 ml), and a larger inoculum were used, essentially “supersizing” the cultures. Yields were increased by roughly 7-fold to 10-fold in the 75-cm<sup>2</sup> cultures in comparison with 6-well culture controls (see Table S1 in the supplemental material).

## DISCUSSION

Here, we report the first consistent long-term *in vitro* cultivation of *T. pallidum* subsp. *pallidum*. The successful culture of recent syphilis isolates UW231B and UW249B as well as the long-established Nichols strain indicates that the cultivation procedure will likely be applicable to other syphilis isolates. Given the extreme similarity of all the *T. pallidum* subspecies, *T. carateum*, and *T. paraluisaniculi*, it is probable that the same conditions will be effective in propagating all the members of this group of pathogens, as will be examined in future studies.

The culture method used was strongly based on the prior studies by A. Howard Fieldsteel, David L. Cox, and their coworkers, who systematically established the requirements for growth of *T. pallidum* in primary cultures. The extended *in vitro* survival of *T. pallidum* in the presence of mammalian cells had been noted by several groups (32–37), and examination of several cell cultures indicated that Sf1Ep cells performed better than other cell types in this aspect (most likely because of their low growth rate and low metabolism). Fieldsteel et al. (37) used oxygen gradients formed in Leighton tubes to demonstrate that microaerobic conditions further prolonged survival and apparent multiplication. It was also noted that only certain commercial fetal bovine serum (FBS) lots supported *T. pallidum* viability (38). By combining these

**TABLE 4** TpCM-2<sup>a</sup>

Component	Amt for 50 ml	Final concn	Manufacturer/catalog no.
1× CMRL 1066 medium without L-glutamine or phenol red	37 ml	0.8×	United States Biological/C5900-03A
Sodium pyruvate	364 μl	0.73 mM	Sigma/S8636
0.1% resazurin	50 μl	0.001%	Sigma/R7017
MOPS (1 M), pH 7.5	1 ml	20 mM	Sigma/M3183
NaHCO <sub>3</sub> (7.5%)	1.08 ml	19.2 mM	Sigma/M8761
L-Glutamine (200 mM)	500 μl	2 mM	Sigma/G6152
100× D-glucose (15% in water)	500 μl	To 17.6 mM	Sigma/G6152
D-Mannitol (10 g/dl) (10% in water)	80 μl	0.88 mM	Sigma/M-1902
L-Histidine (5 g/dl) (5% in water)	80 μl	0.52 mM	Sigma/H6034
DL-Dithiothreitol	4 mg	0.52 mM	Sigma/D9779
Fetal bovine serum, heat inactivated	10 ml	20%	Sigma/F4135

<sup>a</sup>TpCM-2, *T. pallidum* cultivation medium 2; MOPS, morpholinepropanesulfonic acid.

components with Eagle's MEM and DTT to decrease the presence of reactive oxygen species, consistent *in vitro* multiplication was achieved and reproduced in many experiments. However, attempts to obtain continued growth through subculturing were generally unsuccessful, with the combined yields of the primary and passaged cultures rarely exceeding that of the primary culture alone. Cox obtained enhanced survival and growth with subculture in 4 experiments in which up to 2,000-fold increases over a 17-to-30-day period were observed (reviewed in reference 14). However, these results were not reproduced in subsequent experiments (14).

We believe that the key to achieving long-term culture of *T. pallidum* in the current study is the combination of the use of the TpCM-2 modified medium and the maintenance of near-homeostatic conditions through regular subculture and partial medium replacement as needed. TpCM-2 differs from its precursor, TpCM, by substitution of Eagle's MEM with CMRL 1066 medium as the basal medium and the omission of some of the TpCM additives (Table 4). CMRL 1066 medium was selected because it is utilized as the basal medium in Barbour-Stoenner-Kelly (BSK) medium, which is widely used for culture of *Borrelia* (relapsing fever) and *Borrelia* (Lyme disease) isolates (39, 40). Compared to MEM, CMRL contains additional nutrients, including nucleic acid bases, nucleosides, cocarboxylase, coenzyme A, flavin adenine dinucleotide, NAD, NADP, Na acetate, Na glucuronate, and the fatty acid mixture Tween 80; some of the shared components are also present at different concentrations. Further analysis will be needed to determine (i) if the CMRL-MEM substitution is required for long-term *T. pallidum* culture and, if so, (ii) what CMRL component(s) is responsible for enhanced *T. pallidum* survival and growth. The other factor that appears to be important in prolonged survival and growth is regular subculture at 6-to-7-day intervals. The relatively short time between subcultures limits both the depletion of nutrients and the development of toxic conditions, e.g., changes in pH and accumulation of toxic by-products. It should be noted, however, that the subculture interval can be increased when the number of *T. pallidum* organisms in the culture is low and partial medium replacement is utilized. For example, in some of our low-inoculum experiments the level in the inocula became  $\leq 10^6$  per culture. To bolster these cultures, they were at times extended by up to 15 days with partial medium replacement at 4-to-7-day intervals (see, e.g., Fig. 1, low inoculum, days 59 to 74).

Another observation was that a maximum yield of *T. pallidum* organisms per culture occurred in standard 9-cm<sup>2</sup> cultures with 2 ml of TpCM-2; the yield per culture was limited despite inoculum size when all other conditions are held constant. We found that a simple increase in the volume of medium resulted in a proportionately improved yield when a high inoculum was used (Fig. 8). Therefore, it appears that *T. pallidum* itself consumes nutrients and/or alters culture conditions in a way that limits its *in vitro* growth, as is the case for most bacterial cultures. The yield of *T. pallidum* organisms per culture could also be increased by using 75-cm<sup>2</sup> flasks and concomitant increases in inoculum size, medium volume, and Sf1Ep cell numbers (Table S1).

Optimal growth of *T. pallidum* in this system required the presence of Sf1Ep cells,



with little multiplication occurring in parallel axenic cultures (Fig. 3; see also Fig. S3 in the supplemental material). It is of interest that the number of genome Equiv. per cell increased dramatically in axenic cultures, whereas this value remains relatively constant at ~3 genome Equiv. per cell in parallel cultures with Sf1Ep cells. Indeed, it had been observed previously that *T. pallidum* in an axenic environment continues to synthesize DNA (and RNA) for up to 6 days, despite the fact that the number of cells did not increase in these experiments (41, 42). Thus, the barrier to multiplication in the axenic cultures performed to date is not likely to be due to defects in genome replication. Direct interaction through adherence between Sf1Ep cells and *T. pallidum* is apparently required for promotion of treponemal multiplication in that separation of *T. pallidum* from the cell monolayer in Transwell chambers prevented growth and shortened survival (unpublished observations).

We speculate that *T. pallidum* may directly acquire certain nutrients, such as lipids, through direct interaction with host cells. It had been shown previously that *B. burgdorferi* can obtain lipids during direct interaction with mammalian cells (43) and that *T. pallidum* can acquire fluorescently labeled fatty acids directly from the surrounding medium (44). Matthews et al. (45) found that the lipid content of *T. pallidum* purified from infected rabbit testes had high proportions of cholesterol, which was most likely acquired directly from the host rather than synthesized from fatty acids. These are important observations, since neither of these organisms contains the genes required for fatty acid synthesis (46, 47). *T. pallidum*, like other treponemes (48–50), most likely acquires lipids bound to serum albumin, which acts as a detoxifying agent (51); perhaps this mechanism is supplemented by direct acquisition from host cells. The bound particles or vesicles observed by cryo-electron microscopy (Fig. 7; see also Movies S1 and S2 in the supplemental material) could conceivably represent a means of nutrient acquisition.

*T. pallidum* is a microaerophilic organism that requires low (1.5% to 5%) concentrations of oxygen for long-term survival and growth and yet is extremely sensitive to the toxic effects of atmospheric levels of oxygen (16, 36, 42, 52–55). In 1974, Cox and Barber (54) demonstrated that *T. pallidum* consumed O<sub>2</sub>, but even today we do not have a good explanation of how oxygen is utilized. *T. pallidum* lacks genes encoding the tricarboxylic cycle, cytochromes, or other components of typical bacterial oxidative phosphorylation pathways (47). One hypothesis is that O<sub>2</sub> is used as an electron acceptor to maintain appropriate NADH/NAD<sup>+</sup> levels through the action of NADH oxidase (56). *T. pallidum* lacks genes encoding superoxide dismutase or catalase but may utilize neelaredoxin to provide protective activity against superoxide and other reactive oxygen species (ROS) (57). Reducing compounds such as DTT in TpCM and TpCM-2 scavenge ROS and play an important role in prolonging *T. pallidum* survival *in vitro* (16). It is also possible that host cells *in vivo* (and Sf1Ep cells in the *in vitro* culture system) are active in scavenging of ROS and thus in protecting *T. pallidum* from these toxic compounds.

Sf1Ep cells are better at supporting the survival and growth of *T. pallidum* than are all other cell types that have been examined (58). The particular capability of Sf1Ep cells to support *T. pallidum* multiplication may be related to their relatively low growth rate and low metabolic activity. Sf1Ep cell cultures can survive quite well for 2 weeks, with little change in medium parameters such as pH. It is likely that other mammalian cell types deplete nutrients and change medium conditions more rapidly, limiting their efficacy in supporting *T. pallidum* growth. We are hopeful that future studies will identify the nutrients or protective activities provided by Sf1Ep cells and thus permit long-term axenic survival and growth.

Retention of infectivity in the rabbit model and structural integrity are important indicators that *in vitro*-cultured *T. pallidum* organisms maintain wild-type properties. In future analyses, the genome sequence of long-term-cultured treponemes will be compared with those of rabbit-propagated organisms to determine whether any sequence differences are evident. However, selection of a small subset of variant cells

capable of growing *in vitro* seems implausible, because exponential multiplication is evident within days after the inoculation of cultures with rabbit-derived treponemes.

The members of the *T. pallidum* group of pathogens represent an extreme in terms of host dependence. These bacteria have adapted to survival only in mammalian tissue, relying on the host for provision of nucleic acid bases, fatty acids, most amino acids, and glucose as an energy source (14, 47, 56) as well as for the maintenance of near-homeostatic conditions in terms of temperature, osmolarity, oxygen and CO<sub>2</sub> levels, and pH. The genus *Treponema* is a genetically diverse group whose known members are primarily host-associated organisms, including commensal skin organisms, oral treponemes, intestinal spirochetes, oral- and hoof-associated organisms involved in polymicrobial infections, and termite gut symbionts (59). However, *T. caldaria*, *T. stenostreptum*, and *T. zuelzeriae* were recently recognized as free-living *Treponema* species (60); many more environmental species are likely, as indicated by the identification of multiple *Treponema* genomes in a microbiome study of water well sediment in Rifle, CO (61). Progressive genome reduction is extreme in this genus, resulting in decreases from roughly 4 Mb for environmental and termite-associated treponemes to only 1.1 Mb for the *T. pallidum* group, with intermediate genome sizes occurring in other mammal-associated *Treponema* species (18). Thus, *T. pallidum* has lost genes for most biosynthetic pathways, stress response pathways, and complex energy production pathways while retaining the minimum complement of genes required for survival, proliferation, and transmission in the near-homeostatic environment of mammalian tissue, including those encoding transporters and efficient motility and chemotaxis systems.

In summary, the modification of the system used by Fieldsteel et al. (15) described here will likely facilitate the characterization of the *T. pallidum* subspecies, *T. carateum*, and the rabbit and hare-infecting *Treponema* species. Future studies will include application of this approach to culture of *T. pallidum* subsp. *pertenue* and subsp. *endemicum*, which would in turn provide new avenues for the study of yaws and bejel. It is likely that the rabbit and hare pathogen (provisionally renamed "*T. paraluisleporidarum*" from *T. paraluisuniculi* [62]) can also be cultured by this method, which may provide new insights into the evolution of host specificity among *Treponema* species. We anticipate that it will be possible to isolate *T. pallidum* and other pathogenic *Treponema* directly from tissues or body fluids using the *in vitro* culture system. Potentially, this approach also may permit the culture of the pinta organism *T. carateum*, which has been shown to be infectious in primates but has not been propagated in rabbits or other laboratory animals (19, 27). *In vitro*-cultured pathogenic treponemes could also be used in *in vitro* host-pathogen interaction and immunologic studies, as well as in vaccine development. We have already begun to utilize the culture system for the following purposes: delineation of the nutrients required for *in vitro* growth; comparison of the transcriptome and proteome of *in vitro*-cultured *T. pallidum* with those of rabbit-propagated organisms; cloning of pathogenic *Treponema* by limiting dilution; genome sequencing of *in vitro*-cultured *T. pallidum*; and antimicrobial susceptibility testing. Random and targeted mutagenesis studies may also be possible using the *T. pallidum* culture system. However, the current procedure is still complex, due to the requirement for tissue culture cells and a microaerobic environment. This aspect may hinder its widespread use by research laboratories, as well as its potential application to clinical uses. Therefore, the primary goal remains the development of an axenic system that supports the long-term culture of pathogenic *Treponema* species, thereby further simplifying the study of these enigmatic organisms.

## MATERIALS AND METHODS

**Ethics statement.** All procedures involving rabbits were reviewed and approved by the Animal Welfare Committee of the University of Texas Health Science Center at Houston.

**Tissue culture.** All reagents were purchased from Sigma-Aldrich unless otherwise indicated. Sf1Ep (NBL-11) cells (ATCC CCL-68) were obtained from the American Type Culture Collection, Rockville, MD. Stocks of Sf1EP cells were between passage 19 and 40 and were maintained in Sf1Ep medium consisting of Eagle's MEM with nonessential amino acids, L-glutamine, sodium pyruvate, and 10% heat-inactivated



FBS (51) at 37°C in air with 5% CO<sub>2</sub>. Low-passage Sf1Ep cells grow slowly and were subcultured at 1:5 every 2 to 3 weeks. High-passage cells grow more rapidly and were subcultured at 1:20 every week. Cells were fed weekly by replacement of one-half of the medium volume.

**Bacteria.** *Treponema pallidum* subspecies *pallidum* Nichols, initially isolated from the cerebrospinal fluid of a neurosyphilis patient in Baltimore, MD, in 1912 (20), was obtained from J. N. Miller at the UCLA Geffen School of Medicine. The UW231B and UW249B strains were isolated in 2004 from the blood of untreated syphilis patients in Seattle, WA, and were the kind gift of L. C. Tantalos, S. K. Sahi, and C. M. Marra (University of Washington [UW] School of Medicine). *T. pallidum* strains were maintained by intratesticular passage in male New Zealand White rabbits (3 to 4 kg) that were housed at 16 to 18°C and were provided antibiotic-free food and water. Rabbits were inoculated with  $2 \times 10^7$  to  $5 \times 10^7$  organisms from frozen stocks per testis. Animals infected with the Nichols strain were euthanized at the time of peak orchitis (10 to 12 days). Infection with the UW strains was monitored by rapid plasma reagin (RPR) test reactivity, and the animals were euthanized when a positive test result was obtained (20 to 40 days for UW231B, 26 days for UW249B). Testes were removed aseptically, and *T. pallidum* organisms were extracted from minced testes by gentle stirring in 10 ml of filter-sterilized phosphate-buffered saline (PBS; 0.154 M NaCl, 0.01 M NaH<sub>2</sub>PO<sub>4</sub>, pH 7.4) with 50% heat-inactivated rabbit serum and 1 mM DTT for 10 min. Rabbit cells were removed by centrifugation at  $100 \times g$  for 7 min. The *T. pallidum* suspension was supplemented with 15% (vol/vol) sterile glycerol and stored in 1-ml aliquots at  $-80^\circ\text{C}$ . *In vitro*-cultured *T. pallidum* was frozen in TpCM-2 medium supplemented with 15% glycerol.

***T. pallidum* cultivation medium.** TpCM-2 was prepared as indicated in Table 4 1 day prior to use. All solutions were made in cell culture-grade water (Sigma W3500) and filter sterilized. Fetal bovine serum (FBS) lots vary considerably in their ability to support *T. pallidum* survival and replication (16, 38, 51). FBS lots from several suppliers were therefore prescreened for efficacy (by comparison with previously tested lots), purchased in bulk, and heat inactivated at 56°C for 30 min prior to use. Samples of FBS lots that support the multiplication of *T. pallidum* are available upon request. The pH of the medium was adjusted to 7.5, and the mixture was then filter sterilized with 0.22- $\mu\text{m}$ -pore-size polyethersulfone filters (Merck Millipore). The medium was then preequilibrated in a BBL GasPak jar in which a vacuum was drawn five times (house vacuum;  $\sim 12$  to  $18 \mu\text{m Hg}$ ), and the jar was refilled with 5% CO<sub>2</sub>–95% N<sub>2</sub> four times and a final time with 1.5% O<sub>2</sub>–5% CO<sub>2</sub>–93.5% N<sub>2</sub>. The medium was then incubated overnight in a Forma model 3130 trigas incubator (Thermo Fisher) maintained at 34°C with 1.5% O<sub>2</sub>–5% CO<sub>2</sub>–93.5% N<sub>2</sub> (here referred to as the low-oxygen incubator). All subsequent steps in the incubation of *T. pallidum* cultures were carried out under these conditions.

***In vitro* cultivation of *T. pallidum*.** At 1 to 2 days prior to each culture initiation or passage, Sf1Ep cells were trypsinized and seeded in tissue culture-treated 6-well cluster plates (Falcon 353046) at  $0.5$  to  $1 \times 10^5$  cells per well. Due to the long culture period, the use of plates with low-evaporation lids is essential. At least 3 h prior to the start of an experiment or passage, the medium in the 6-well plates containing Sf1EP cells was removed, and the plates were rinsed with the preequilibrated TpCM-2 to remove any traces of Sf1Ep medium prior to addition of 2 to 4 ml of the TpCM-2. Plates were then preequilibrated in the GasPak jar as described above and transferred to the low-oxygen incubator. All manipulations of cultures were carried out in ambient air with use of a laminar flow hood, with efforts to limit this air exposure to  $<30$  min to limit oxygen exposure.

Cultivation experiments were initiated using frozen aliquots of *T. pallidum* extracted from rabbits. A frozen aliquot was thawed at room temperature and diluted in TpCM-2, such that each 50-to-100- $\mu\text{l}$  inoculum contained  $0.5 \times 10^6$  to  $1.25 \times 10^6$  *T. pallidum*. Sf1Ep cultures were briefly removed from the incubator, inoculated with *T. pallidum*, preequilibrated, and then returned to the low-oxygen incubator.

**Subculture procedure.** After 6 to 7 days of incubation, *T. pallidum* organisms were subcultured as follows. The TpCM-2 medium was removed and reserved. Each well was rinsed with 0.35 ml of trypsin-EDTA (Sigma T4049), which was combined with the reserved medium. An additional 0.35 ml of trypsin-EDTA was added, and the plates were incubated at 37°C for 5 min. The reserved medium, the rinsed and trypsinized Sf1Ep cells, and the *T. pallidum* organisms were combined and used to rinse the culture well. An aliquot (ranging from 100 to 500  $\mu\text{l}$ ) of the trypsinized culture was used to inoculate new 6-well Sf1Ep cultures prepared as described above. A minimum of three wells were inoculated per condition.

**Quantification of *T. pallidum*.** A minimum of three biological replicates were used for each condition and time point. Trypsinized cultures were quantitated by dark-field microscopy using one of two counting methods. Samples (10  $\mu\text{l}$ ) were placed under 22-by-22-mm coverslips on plain glass slides, and the numbers of *T. pallidum* organisms in random fields were counted using a 40 $\times$  objective lens until 10 fields or  $>50$  organisms had been counted. The motility of each organism was also assessed. At least three counts were made for each sample. Using calibration of the field diameter with a stage micrometer, the concentration of organisms per milliliter was estimated as the average number per field  $\times 10^6/2.2$ . Alternatively, cultures were quantitated using Helber counting chambers with Thoma rulings (Hawksley, Lancing, Sussex, United Kingdom). Each culture was counted at least twice using this method. Data for ongoing experiment 2 are those collected through 10 May 2018, whereas data from ongoing experiments 1, 3, and 4 are those collected prior to 28 April 2018.

**Quantitative PCR.** Trypsinized cultures were centrifuged at  $14,000 \times g$  for 10 min to pellet *T. pallidum*. DNA from the pelleted organisms was purified using a DNeasy kit (Qiagen), and 1/50 of the material (2  $\mu\text{l}$  of a total of 100  $\mu\text{l}$ ) was used for each of three quantitative PCR (qPCR) reactions per sample. qPCR was performed using iQ Sybr green supermix on a C1000 Touch Thermal Cycler (Bio-Rad). The primers that were targeted to the *T. pallidum* DNA polymerase I gene (*polA*; TPANIC\_0105) were as follows: 6037TP1 (5'-CAGGATCCGGCATATGTC-3') and 6037TP2 (5'-AAGTGTGAGCGTCTCATC-3').

The program consisted of 95°C for 2 min followed by 39 cycles of 95°C for 5 s and 60°C for 30 s. All samples were examined in triplicate technical replicates, and standard curves using purified *T. pallidum* DNA were performed for each plate and had linear regression coefficients of determination ( $R^2$ ) of  $\geq 0.98$ . No-template controls (NTC) and DNA extracted from uninfected Sf1Ep cultures were used as controls to optimize the qPCR assay conditions.

**Infectivity studies.** The infectivity of cultured *T. pallidum* was determined by injecting serial dilutions of the sample intradermally into the shaved backs of rabbits. Dilutions were performed in TpCM-2, and each dilution was inoculated at duplicate sites on each rabbit. The inoculation sites were shaved and examined daily for 45 days for the development of the occurrence of erythema and induration, which together constitute lesion development. Needle aspirates of representative lesions (two per dosage) were examined by dark-field microscopy for the presence of motile treponemes indicating active treponemal infection. Rabbits were provided antibiotic-free food and water, housed at 16 to 18°C, and shaved daily throughout the course of the experiment. Median 50% infectious dose ( $ID_{50}$ ) values were determined by the method of Reed and Muench (63).

**Light microscopy.** Digital photographs were obtained as described previously (64) using a Nikon Eclipse microscope (Nikon, Tokyo, Japan) equipped with Cytoviva X-cite 120 dark-field illumination (Cytoviva, Auburn, AL), a CoolSNAP HQ charge-coupled-device (CCD) camera (Photometrics, Tucson, AZ), and Nikon NIS-Elements AR3.2 software. Photography was performed with a 100 $\times$  objective lens with an internal diaphragm (Nikon) using oil immersion.

**Cryo-electron microscopy.** Bacterial cultures were mixed with 10-nm-diameter gold particle clusters, which were used as fiducial markers, and were then deposited onto freshly glow-discharged, holey carbon grids for 1 min. The grids were blotted with filter paper and rapidly frozen in liquid ethane, using a gravity-driven plunger apparatus. The frozen-hydrated specimens were imaged at  $-170^\circ\text{C}$  using a Polara G2 electron microscope (FEI Company) equipped with a field emission gun and a direct-detection device (Gatan K2 Summit). The microscope was operated at 300 kV with a magnification of  $\times 9,400$ , resulting in an effective pixel size of 4.5 Å at the specimen level. We used SerialEM (65) to collect low-dose, single-axis tilt series with the dose fractionation mode at about 6- $\mu\text{m}$  defocus and a cumulative dose of  $\sim 60\text{ e}^-/\text{Å}^2$  distributed over 35 stacks. Each stack contains  $\sim 8$  images. Tilt series were collected at angles from  $-51^\circ$  to  $51^\circ$  with increments of  $3^\circ$ . We used Tomoauto (66) to facilitate data processing, which included drift correction of dose-fractionated data using Motioncorr (67) and assembly of corrected sums into tilt series, automatic fiducial seed model generation, alignment and contrast transfer function correction of tilt series by IMOD (68), and reconstruction of tilt series into tomograms by Tomo3D (69).

## SUPPLEMENTAL MATERIAL

Supplemental material for this article may be found at <https://doi.org/10.1128/mBio.01153-18>.

**FIG S1**, TIF file, 4.5 MB.

**FIG S2**, TIF file, 7.4 MB.

**FIG S3**, TIF file, 5 MB.

**FIG S4**, TIF file, 9.6 MB.

**FIG S5**, TIF file, 6 MB.

**FIG S6**, PDF file, 0.1 MB.

**TABLE S1**, DOCX file, 0.01 MB.

**MOVIE S1**, MOV file, 32.4 MB.

**MOVIE S2**, MOV file, 27.7 MB.

## ACKNOWLEDGMENTS

We gratefully acknowledge A. Howard Fieldsteel (deceased) and David L. Cox for freely sharing information and ideas regarding *T. pallidum* cultivation over a period of several decades. Without their previous work and insight, this study would not have been possible. We thank James N. Miller for his unwavering support and the reviewers for their careful reading of the manuscript and invaluable comments and suggestions.

We also thank Lauren C. Tantalos, Sharon K. Sahi, and Christina M. Marra of the University of Washington School of Medicine for graciously providing *T. pallidum* strains UW231B and UW249B (supported by grant R01NS34235 from NIH/NINDS). Research reported in this publication was supported by the National Institute of Allergy and Infectious Diseases of the National Institutes of Health under award number R21AI128494.

The content is solely our responsibility and does not necessarily represent the official views of the National Institutes of Health.

## REFERENCES

- World Health Organization. 2016. Report on global sexually transmitted infection surveillance 2015. WHO Document Production Services, Geneva, Switzerland.
- World Health Organization. 2011. Prevalence and incidence of selected sexually transmitted infections. Methods and results used by WHO to generate 2005 estimates. [http://apps.who.int/iris/bitstream/handle/10665/44735/9789241502450\\_eng.pdf;jsessionid=597BAFBF75259BFE2F4A2B8184DBB9?sequence=1](http://apps.who.int/iris/bitstream/handle/10665/44735/9789241502450_eng.pdf;jsessionid=597BAFBF75259BFE2F4A2B8184DBB9?sequence=1). Accessed: 23 May 2018.
- Newman L, Rowley J, Vander Hoorn S, Wijesooriya NS, Unemo M, Low N, Stevens G, Gottlieb S, Kiarie J, Temmerman M. 2015. Global estimates of the prevalence and incidence of four curable sexually transmitted infections in 2012 based on systematic review and global reporting. *PLoS One* 10:e0143304. <https://doi.org/10.1371/journal.pone.0143304>.
- GBD 2016 Disease Injury Incidence and Prevalence Collaborators. 2017. Global, regional, and national incidence, prevalence, and years lived with disability for 328 diseases and injuries for 195 countries, 1990–2016: a systematic analysis for the Global Burden of Disease Study 2016. *Lancet* 390:1211–1259. [https://doi.org/10.1016/S0140-6736\(17\)32154-2](https://doi.org/10.1016/S0140-6736(17)32154-2).
- Schaudinn F, Hoffman E. 1905. Vorläufiger Bericht über das Vorkommen für Spirochaeten in syphilitischen Krankheitsprodukten und bei Papillomen. *Arb Gesundh AMT Berlin* 22:528–534.
- Schaudinn F, Hoffmann E. 1905. Über Spirochaetenbefunde im Lymphdrüsen saft Syphilitischer. *Dtsch med Wochenschr* 31:711–714. <https://doi.org/10.1055/s-0029-1188114>.
- Metchnikoff E, Roux E. 1906. Etudes expérimentales sur la syphilis. *Ann Inst Pasteur* 20:785.
- von Wassermann A, Neisser A, Brück C. 1906. Eine serodiagnostische Reaktion bei Syphilis. *Dtsch Med Wochenschr* 32:745–746. <https://doi.org/10.1055/s-0028-1142018>.
- Gensini GF, Conti AA, Lippi D. 2007. The contributions of Paul Ehrlich to infectious disease. *J Infect* 54:221–224. <https://doi.org/10.1016/j.jinf.2004.05.022>.
- Ehrlich P. 1909. Beiträge zur experimentellen Pathologie und Chemotherapie. Akademische Verlagsgesellschaft, Leipzig, Germany.
- Schereschewsky J. 1909. Züchtung der Spirochaete pallida (Schaudinn). *Dtsch Med Wochenschr* 35:835–835. <https://doi.org/10.1055/s-0029-1201453>.
- Kast CC, Kolmer JA. 1929. Concerning the cultivation of *Spirochaeta pallida*. *Am J Syph* 13:419.
- Noguchi H. 1916. Certain alterations in biological properties of spirochaetes through artificial cultivation. *Ann Inst Pasteur* 30:1–4.
- Norris SJ, Cox DL, Weinstock GM. 2001. Biology of *Treponema pallidum*: correlation of functional activities with genome sequence data. *J Mol Microbiol Biotechnol* 3:37–62.
- Fieldsteel AH, Cox DL, Moeckli RA. 1981. Cultivation of virulent *Treponema pallidum* in tissue culture. *Infect Immun* 32:908–915.
- Cox DL. 1994. Culture of *Treponema pallidum*. *Meth Enzymol* 236:390–405. [https://doi.org/10.1016/0076-6879\(94\)36029-4](https://doi.org/10.1016/0076-6879(94)36029-4).
- Norris SJ, Edmondson DG. 1987. Factors affecting the multiplication and subculture of *Treponema pallidum* subsp. *pallidum* in a tissue culture system. *Infect Immun* 53:534–539.
- Norris SJ, Paster BJ, Moter A, Göbel UB. 2003. The genus *Treponema*. In Dworkin M, Falkow S, Rosenberg E, Schleifer K-H, Stackebrandt E (ed), *The prokaryotes: an evolving electronic resource for the microbiological community*, 1st ed. Springer Verlag, New York, NY.
- Giacani L, Lukehart SA. 2014. The endemic treponematoses. *Clin Microbiol Rev* 27:89–115. <https://doi.org/10.1128/CMR.00070-13>.
- Nichols HJ, Hough WH. 1913. Demonstration of *Spirochaeta pallida* in the cerebrospinal fluid from a patient with nervous relapse following the use of Salvarsan. *J Am Med Assoc* 60:108–110.
- Parker RC. 1961. *Methods of tissue culture*, 3rd ed. Hoeber Medical Division, Harper & Row, New York, NY.
- Arora N, Schuenemann VJ, Jäger G, Peltzer A, Seitz A, Herbig A, Strouhal M, Grillová L, Sánchez-Busó L, Kühnert D, Bos KI, Davis LR, Mikalová L, Bruisten S, Komericki P, French P, Grant PR, Pando MA, Vaulet LG, Fermepin MR, Martínez A, Centurion Lara A, Giacani L, Norris SJ, Šmajš D, Bosshard PP, González-Candelas F, Nieselt K, Krause J, Bagheri HC. 2016. Origin of modern syphilis and emergence of a pandemic *Treponema pallidum* cluster. *Nat Microbiol* 2:16245. <https://doi.org/10.1038/nmicrobiol.2016.245>.
- Nechvátal L, Pětrošová H, Grillová L, Pospíšilová P, Mikalová L, Strnadl R, Kuklová I, Kojanová M, Kreidlová M, Vaňousová D, Procházka P, Zákoucká H, Krchňáková A, Šmajš D. 2014. Syphilis-causing strains belong to separate SS14-like or Nichols-like groups as defined by multilocus analysis of 19 *Treponema pallidum* strains. *Int J Med Microbiol* 304:645–653. <https://doi.org/10.1016/j.ijmm.2014.04.007>.
- Šmajš D, Norris SJ, Weinstock GM. 2012. Genetic diversity in *Treponema pallidum*: implications for pathogenesis, evolution and molecular diagnostics of syphilis and yaws. *Infect Genet Evol* 12:191–202. <https://doi.org/10.1016/j.meegid.2011.12.001>.
- Magnuson HJ, Eagle H, Fleischman R. 1948. The minimal infectious inoculum of *Spirochaeta pallida* (Nichols strain), and a consideration of its rate of multiplication in vivo. *Am J Syph* 32:1–18.
- Cumberland MC, Turner TB. 1949. The rate of multiplication of *Treponema pallidum* in normal and immune rabbits. *Am J Syph* 33:201–212.
- Turner TB, Hollander DH. 1957. *Biology of the treponematoses*. World Health Organization, Geneva, Switzerland.
- Norris SJ, Edmondson DG. 1988. In vitro culture system to determine MICs and MBCs of antimicrobial agents against *Treponema pallidum* subsp. *pallidum* (Nichols strain). *Antimicrob Agents Chemother* 32:68–74. <https://doi.org/10.1128/AAC.32.1.68>.
- Izard J, Renken C, Hsieh CE, Desrosiers DC, Dunham-Ems S, La Vake C, Gebhardt LL, Limberger RJ, Cox DL, Marko M, Radolf JD. 2009. Cryoelectron tomography elucidates the molecular architecture of *Treponema pallidum*, the syphilis spirochete. *J Bacteriol* 191:7566–7580. <https://doi.org/10.1128/JB.01031-09>.
- Goldstein SF, Charon NW, Kreiling JA. 1994. *Borrelia burgdorferi* swims with a planar waveform similar to that of eukaryotic flagella. *Proc Natl Acad Sci U S A* 91:3433–3437. <https://doi.org/10.1073/pnas.91.8.3433>.
- Liu J, Howell JK, Bradley SD, Zheng Y, Zhou ZH, Norris SJ. 2010. Cellular architecture of *Treponema pallidum*: novel flagellum, periplasmic cone, and cell envelope as revealed by cryo electron tomography. *J Mol Biol* 403:546–561. <https://doi.org/10.1016/j.jmb.2010.09.020>.
- Steinhardt E. 1913. A preliminary note on *Spirochaeta pallida* and living tissue cells in vitro. *JAMA* 61:1810. <https://doi.org/10.1001/jama.1913.04350210050017>.
- Kast BS, Kolmer JA. 1933. On the cultivation of *Spirochaeta pallida* in living tissue media. *Am J Syph* 17:529–532.
- Sandok PL, Knight ST, Jenkin HM. 1976. Examination of various cell culture techniques for co-incubation of virulent *Treponema pallidum* (Nichols I strain) under anaerobic conditions. *J Clin Microbiol* 4:360–371.
- Jones RH, Finn MA, Thomas JJ, Folger C. 1976. Growth and subculture of pathogenic *T. pallidum* (Nichols strain) in BHK-21 cultured tissue cells. *Br J Vener Dis* 52:18–23.
- Fitzgerald TJ, Johnson RC, Sykes JA, Miller JN. 1977. Interaction of *Treponema pallidum* (Nichols strain) with cultured mammalian cells: effects of oxygen, reducing agents, serum supplements, and different cell types. *Infect Immun* 15:444–452.
- Fieldsteel AH, Stout JG, Becker FA. 1979. Comparative behavior of virulent strains of *Treponema pallidum* and *Treponema pertenuis* in gradient cultures of various mammalian cells. *Infect Immun* 24:337–345.
- Fieldsteel AH, Stout JG, Becker FA. 1981. Role of serum in survival of *Treponema pallidum* in tissue culture. *In Vitro* 17:28–32. <https://doi.org/10.1007/BF02618027>.
- Barbour AG. 1984. Isolation and cultivation of Lyme disease spirochetes. *Yale J Biol Med* 57:521–525.
- Barbour AG. 1986. Cultivation of *Borrelia*: a historical overview. *Zentralbl Bakteriol Mikrobiol Hyg* 263:11–14. [https://doi.org/10.1016/S0176-6724\(86\)80095-5](https://doi.org/10.1016/S0176-6724(86)80095-5).
- Baseman JB, Nichols JC, Mogerley S. 1979. Capacity of virulent *Treponema pallidum* (Nichols) for deoxyribonucleic acid synthesis. *Infect Immun* 23:392–397.
- Norris SJ, Miller JN, Sykes JA. 1980. Long-term incorporation of tritiated adenine into deoxyribonucleic acid and ribonucleic acid by *Treponema pallidum* (Nichols strain). *Infect Immun* 29:1040–1049.
- Crowley JT, Toledo AM, LaRocca TJ, Coleman JL, London E, Benach JL. 2013. Lipid exchange between *Borrelia burgdorferi* and host cells. *PLoS Pathog* 9:e1003109. <https://doi.org/10.1371/journal.ppat.1003109>.
- Cox DL, Radolf JD. 2001. Insertion of fluorescent fatty acid probes into the outer membranes of the pathogenic spirochaetes *Treponema pallidum* and *Borrelia burgdorferi*. *Microbiology* 147:1161–1169. <https://doi.org/10.1099/00221287-147-5-1161>.

45. Matthews HM, Yang TK, Jenkin HM. 1979. Unique lipid composition of *Treponema pallidum* (Nichols virulent strain). *Infect Immun* 24:713–719.
46. Fraser CM, Casjens S, Huang WM, Sutton GG, Clayton R, Lathigra R, White O, Ketchum KA, Dodson R, Hickey EK, Gwinn M, Dougherty B, Tomb JF, Fleischmann RD, Richardson D, Peterson J, Kerlavage AR, Quackenbush J, Salzberg S, Hanson M, van Vugt R, Palmer N, Adams MD, Gocayne J, Friderman J, Utterback T, Watthey L, McDonald L, Artiach P, Bowman C, Garland S, Fuji C, Cotton MD, Horst K, Roberts K, Hatch B, Smith HO, Venter JC. 1997. Genomic sequence of a Lyme disease spirochaete, *Borrelia burgdorferi*. *Nature* 390:580–586. <https://doi.org/10.1038/37551>.
47. Fraser CM, Norris SJ, Weinstock GM, White O, Sutton GG, Dodson R, Gwinn M, Hickey EK, Clayton R, Ketchum KA, Sodergren E, Hardham JM, McLeod MP, Salzberg S, Peterson J, Khalak H, Richardson D, Howell JK, Chidambaram M, Utterback T, McDonald L, Artiach P, Bowman C, Cotton MD, Fujii C, Garland S, Hatch B, Horst K, Roberts K, Sandusky M, Weidman J, Smith HO, Venter JC. 1998. Complete genome sequence of *Treponema pallidum*, the syphilis spirochete. *Science* 281:375–388. <https://doi.org/10.1126/science.281.5375.375>.
48. Oyama VI, Steinman HG, Eagle H. 1953. The nutritional requirements of treponemata. V. A detoxified lipide as the essential growth factor supplied by crystallized serum albumin. *J Bacteriol* 65:609–616.
49. Van Horn KG, Smibert RM. 1982. Fatty acid requirement of *Treponema denticola* and *Treponema vincentii*. *Can J Microbiol* 28:344–350. <https://doi.org/10.1139/m82-051>.
50. Van Horn KG, Smibert RM. 1983. Albumin requirement of *Treponema denticola* and *Treponema vincentii*. *Can J Microbiol* 29:1141–1148. <https://doi.org/10.1139/m83-175>.
51. Norris SJ, Edmondson DG. 1986. Serum requirement for the multiplication of *Treponema pallidum* in a tissue-culture system: association of growth-promoting activity with the protein fraction. *Sex Transm Dis* 13:207–213. <https://doi.org/10.1097/00007435-198610000-00001>.
52. Norris SJ, Miller JN, Sykes JA, Fitzgerald TJ. 1978. Influence of oxygen tension, sulfhydryl compounds, and serum on the motility and virulence of *Treponema pallidum* (Nichols strain) in a cell-free system. *Infect Immun* 22:689–697.
53. Cover WH, Norris SJ, Miller JN. 1982. The microaerophilic nature of *Treponema pallidum*: enhanced survival and incorporation of tritiated adenine under microaerobic conditions in the presence or absence of reducing compounds. *Sex Transm Dis* 9:1–8. <https://doi.org/10.1097/00007435-198201000-00001>.
54. Cox CD, Barber MK. 1974. Oxygen uptake by *Treponema pallidum*. *Infect Immun* 10:123–127.
55. Cox DL, Riley B, Chang P, Sayatsheri S, Tassell S, Hevelone J. 1990. Effects of molecular oxygen, oxidation-reduction potential, and antioxidants upon in vitro replication of *Treponema pallidum* subsp. *pallidum*. *Appl Environ Microbiol* 56:3063–3072.
56. Radolf JD, Deka RK, Anand A, Šmajš D, Norgard MV, Yang XF. 2016. *Treponema pallidum*, the syphilis spirochete: making a living as a stealth pathogen. *Nat Rev Microbiol* 14:744–759. <https://doi.org/10.1038/nrmicro.2016.141>.
57. Hazlett KR, Cox DL, Sikkink RA, Auch'ere F, Rusnak F, Radolf JD. 2002. Contribution of neelaredoxin to oxygen tolerance by *Treponema pallidum*. *Methods Enzymol* 353:140–156. [https://doi.org/10.1016/S0076-6879\(02\)53044-5](https://doi.org/10.1016/S0076-6879(02)53044-5).
58. Fieldsteel AH, Becker FA, Stout JG. 1977. Prolonged survival of virulent *Treponema pallidum* (Nichols strain) in cell-free and tissue culture systems. *Infect Immun* 18:173–182.
59. Norris SJ, Paster BJ, Smibert RM. 2010. *Treponema*, p 501–531. In Krieg NR, Staley JT, Brown DR, Hedlund BP, Paster BJ, Ward NL, Ludwig W, Whitman WB (ed), *Bergey's manual of systematic bacteriology*, vol 4: The Bacteroidetes, Spirochaetes, Tenericutes (Mollicutes), Acidobacteria, Fibrobacteres, Fusobacteria, Dictyoglomi, Gemmatimonadetes, Lentisphaerae, Verrucomicrobia, Chlamydiae, and Planctomycetes. Springer, New York, NY.
60. Abt B, Göker M, Scheuner C, Han C, Lu M, Misra M, Lapidus A, Nolan M, Lucas S, Hammon N, Deshpande S, Cheng JF, Tapia R, Goodwin LA, Pitluck S, Liolios K, Pagani I, Ivanova N, Mavromatis K, Mikhailova N, Huntemann M, Pati A, Chen A, Palaniappan K, Land M, Hauser L, Jeffries CD, Rohde M, Spring S, Gronow S, Detter JC, Bristow J, Eisen JA, Markowitz V, Hugenholtz P, Kyrpides NC, Woyke T, Klenk HP. 2013. Genome sequence of the thermophilic fresh-water bacterium *Spirochaeta caldaria* type strain (H1(T)), reclassification of *Spirochaeta caldaria*, *Spirochaeta stenostrepta*, and *Spirochaeta zuelzeriae* in the genus *Treponema* as *Treponema caldaria* comb. nov., *Treponema stenostrepta* comb. nov., and *Treponema zuelzeriae* comb. nov., and emendation of the genus *Treponema*. *Stand Genomic Sci* 8:88–105. <https://doi.org/10.4056/signs.3096473>.
61. Anantharaman K, Brown CT, Hug LA, Sharon I, Castelle CJ, Probst AJ, Thomas BC, Singh A, Wilkins MJ, Karaoz U, Brodie EL, Williams KH, Hubbard SS, Banfield JF. 2016. Thousands of microbial genomes shed light on interconnected biogeochemical processes in an aquifer system. *Nat Commun* 7:13219. <https://doi.org/10.1038/ncomms13219>.
62. Šmajš D, Strouhal M, Knauf S. 2018. Genetics of human and animal uncultivable treponemal pathogens. *Infect Genet Evol* 61:92–107. <https://doi.org/10.1016/j.meegid.2018.03.015>.
63. Reed LJ, Muench H. 1938. A simple method of estimating fifty percent endpoints. *Am J Hyg* 27:493–497.
64. Lin T, Gao L, Zhao X, Liu J, Norris SJ. 2015. Mutations in the *Borrelia burgdorferi* flagellar type III secretion system genes *fliH* and *fliI* profoundly affect spirochete flagellar assembly, morphology, motility, structure, and cell division. *mBio* 6:e00579-15. <https://doi.org/10.1128/mBio.00579-15>.
65. Mastronarde DN. 2005. Automated electron microscope tomography using robust prediction of specimen movements. *J Struct Biol* 152:36–51. <https://doi.org/10.1016/j.jsb.2005.07.007>.
66. Morado DR, Hu B, Liu J. 2016. Using Tomoauto: a protocol for high-throughput automated cryo-electron tomography. *J Vis Exp* (107):e53608. <https://doi.org/10.3791/53608>.
67. Li X, Mooney P, Zheng S, Booth CR, Braunschweig MB, Gubbens S, Agard DA, Cheng Y. 2013. Electron counting and beam-induced motion correction enable near-atomic-resolution single-particle cryo-EM. *Nat Methods* 10:584–590. <https://doi.org/10.1038/nmeth.2472>.
68. Kremer JR, Mastronarde DN, McIntosh JR. 1996. Computer visualization of three-dimensional image data using IMOD. *J Struct Biol* 116:71–76. <https://doi.org/10.1006/jsbi.1996.0013>.
69. Agulleiro JI, Fernandez JJ. 2015. Tomo3D 2.0—exploitation of advanced vector extensions (AVX) for 3D reconstruction. *J Struct Biol* 189:147–152. <https://doi.org/10.1016/j.jsb.2014.11.009>.