

BMJ Open Validation of EGFL6 expression as a prognostic marker in patients with lung adenocarcinoma in Taiwan: a retrospective study

Chun-Chi Chang,^{1,2} Wen-Wei Sung,^{3,4,5} Hui-Ting Hsu,⁶ Chung-Min Yeh,^{6,7} Chien-Hsun Lee,⁶ Ya-Ling Chen,⁸ Ta-Chih Liu,^{1,9} Kun-Tu Yeh^{3,6}

To cite: Chang C-C, Sung W-W, Hsu H-T, *et al.* Validation of EGFL6 expression as a prognostic marker in patients with lung adenocarcinoma in Taiwan: a retrospective study. *BMJ Open* 2018;**8**:e021385. doi:10.1136/bmjopen-2017-021385

► Prepublication history and additional material for this paper are available online. To view these files, please visit the journal online (<http://dx.doi.org/10.1136/bmjopen-2017-021385>).

T-CL and K-TY contributed equally.

Received 27 December 2017
Revised 12 April 2018
Accepted 11 May 2018

ABSTRACT

Objective Lung adenocarcinoma is a non-small cell lung cancer, a common cancer in both genders, and has poor clinical outcome. Our aim was to evaluate the role of epidermal growth factor (EGF)-like domain multiple 6 (EGFL6) and its prognostic significance in lung adenocarcinoma.

Methods EGFL6 expression was studied by immunohistochemical staining of specimens from 150 patients with lung adenocarcinoma. The correlation between clinicopathological features and EGFL6 expression was quantitatively analysed. We used Kaplan-Meier analysis and Cox proportional hazard models to examine the prognostic value of EGFL6 in terms of overall survival.

Results No significant correlation was found between EGFL6 expression and clinical parameters. However, patients with high levels of EGFL6 expression showed a tendency towards poor prognosis, with borderline statistical significance. Grouping the patients according to a medium age value revealed a significant association between high EGFL6 expression and poor clinical outcome in young patients. This finding was further confirmed by grouping the patients into three groups according to age. HR in patients with high EGFL6 expression was higher in younger patients than in older patients.

Conclusion High EGFL6 expression may serve as a marker for poor prognosis of lung adenocarcinoma, especially in younger patients.

INTRODUCTION

Lung adenocarcinoma, a non-small cell lung cancer (NSCLC), is a major public health problem worldwide, and NSCLC is a leading cause of cancer death in Taiwan.^{1,2} Whereas other types of cancer have shown steady increases in survival in recent years, NSCLC continues to have poor clinical outcome, with a 5-year survival of only 18%.³ Early detection of NSCLC might improve the clinical outcome; however, no suitable screening tools that are both cost-effective and efficient are available. NSCLC screening via a low-dose CT scan can provide early detection of lung

Strengths and limitations of this study

- This is a retrospective study using specimens from 150 patients with lung adenocarcinoma.
- Overall survival, not cancer-specific survival, was used in this study.
- This study did not explore the clinical diversity of postoperative chemotherapy and radiotherapy.
- Considering the limited sample size, further study is necessary for clinical application.
- No information on detailed molecular diversity was provided in the analysis.

lesions, such as ground glass opacity lesions.² However, it does not discriminate benign lesions that may require no further intervention or surgical intervention. Therefore, the identification of specific biomarkers that indicate the malignant potential of NSCLC lesions would help in clinical decision making for cancer follow-up and the timing of surgical intervention.

The malignant potential of a tumour with metastatic behaviour is determined by complex processes, including tumour cell migration, invasion and angiogenesis to the target site.^{1,4-6} One group of proteins implicated in tumour malignancy is the epidermal growth factor (EGF) repeat superfamily, whose members have a conserved motif of cysteines and glycines positioned in a domain of 30–40 residues.^{7,8} These EGF-like proteins are characterised by their multiple EGF repeats⁹ and are secreted as cell surface molecules. The binding of EGF-like proteins to their receptors promotes tumour malignancy.^{8,10-12}

One member of this family, EGF-like domain 6 (EGFL6), is a secreted protein involved in tissue development, promotion of tumour cell migration and angiogenesis.^{8,10-14} The role of EGFL6 in promoting



For numbered affiliations see end of article.

Correspondence to
Professor Kun-Tu Yeh;
10159@cch.org.tw

tumour malignancy is indicated in several types of cancer; for example, patients with oral cancer show high plasma levels of EGFL6, and the plasma EGFL6 level is higher in patients with advanced stage disease than in patients with early-stage disease.¹⁰ In ovarian cancer, EGFL6 regulates cell migration and asymmetric division via the SHP2 (known as protein tyrosine phosphatase, non-receptor type 11, PTPN11) oncprotein, with concomitant activation of extracellular-signal-regulated kinase (ERK).¹¹

Accumulating evidence indicates crucial roles of EGFL6 in promoting tumour malignancy. However, an association between EGFL6 expression and the prognosis of NSCLC remains to be established. Since there are types of pathology subgroups in NSCLC with different tumour behaviours, patients with lung adenocarcinoma were included for investigation. The aim of the present study was to evaluate the expression of EGFL6 and its clinical significance in lung adenocarcinoma.

MATERIALS AND METHODS

Patients

Our study examined 150 tumour samples from patients with lung adenocarcinoma. Cancers were staged according to the American Joint Committee on Cancer Staging Manual (7th edition). The clinicopathological features assessed in this study included histological type, differentiation, lymph node metastasis, tumour, node, metastases (TNM) stage, and tumour size. Histological diagnosis was confirmed by two pathologists, as described previously.¹⁵ Patients with primary lung adenocarcinoma and tissue available in the biobank were included in this survey. Those with missing data or tissue loss during the staining procedure were excluded from this study to avoid bias from missing data.

Immunohistochemical staining and evaluation of cytoplasmic EGFL6

Immunohistochemistry (IHC) staining was performed at the Department of Surgical Pathology, Changhua Christian Hospital, as previously described,^{15 16} using antihuman cytoplasmic EGFL6 antibody (EGFL6 antibody, 1:100 dilution; Abcam, ab140079). Immunoreactivity scores were analysed by three pathologists using a previously described scoring protocol.¹⁶ Liver tissue was reported to have EGFL6 expression and served as the positive control. IHC assay with a primary antibody in tandem with a specimen that is not exposed to the primary antibody served as the negative control (online supplementary figure 1). The pathologists were blinded to the prognostic data of the study. A final agreement was obtained for each score by having all three evaluators view the specimens simultaneously through a multiheaded microscope (Olympus BX51 10-headed microscope). Immunoreactivity scores were defined as the cell staining intensity (0–3) multiplied by the percentage of stained cells (0%–100%), leading to scores from 0 to 300.^{15 16}

Patient and public involvement

This study analysed cancer tissues from de-linked database. Therefore, we did not inform or disseminate to patients the research question, the outcome measures and the results. Patients were not involved in the study, including in the design, recruitment and conduct of the study. No patient adviser was included in the contributorship statement.

Statistical analysis

The χ^2 test was applied for continuous or discrete data analysis. The associations between cytoplasmic EGFL6 expression and patient survival were estimated using univariate analysis and the Kaplan-Meier method, and were further assessed using the log-rank test.¹ Potential confounders including age, gender and stage were adjusted using Cox regression models of multivariate analysis, with the cytoplasmic EGFL6 expressions fitted as indicator variables. All statistical analyses were conducted using the SPSS V.15.0 statistical software. All statistical tests were two-sided, and *p* values <0.05 were considered statistically significant.

RESULTS

Cytoplasmic EGFL6 is expressed in the majority of lung adenocarcinoma specimens

We verified the role of EGFL6 in the clinical outcome of lung adenocarcinoma by recruiting 150 patients. EGFL6 expression was detected with IHC staining, as shown in figure 1 (figure 1A–C). Of the 150 patients, only 6 (4%) showed no detectable cytoplasmic EGFL6 expression. Table 1 shows the relationships of cytoplasmic EGFL6 expression with clinicopathological characteristics. The mean patient age was 62.1±11.6 years (mean±SD). The cytoplasmic EGFL6 expression was not significantly associated with the clinicopathological characteristics of gender, grade, age or TNM stage.

The prognostic role of cytoplasmic EGFL6 expression in patients with lung adenocarcinoma

We further evaluated the prognostic role of cytoplasmic EGFL6 expression in patients with lung adenocarcinoma. Overall survival data were collected, and no data were missing from any of the 150 patients. The mean and median follow-up times after surgery were 5.2 and 3.2 years (range 0.1–11.0 years), respectively. The 5-year survival rate was 42.1%. During the survey, 99 (66.0%) patients died. In the univariate analysis, patients with advanced stage disease, aged >63 years old and male had significantly poorer clinical outcomes (table 2). These factors were still significantly associated with poor prognosis in the multivariate analysis (HR=2.241, 95% CI 1.443 to 3.481, *p*<0.001 for stage; HR=1.997, 95% CI 1.303 to 3.062, *p*=0.002 for age; HR=1.802, 95% CI 1.180 to 2.753, *p*=0.006 for gender; table 2). A prognostic role of cytoplasmic EGFL6 in lung adenocarcinoma was suggested by the finding that patients with high cytoplasmic EGFL6

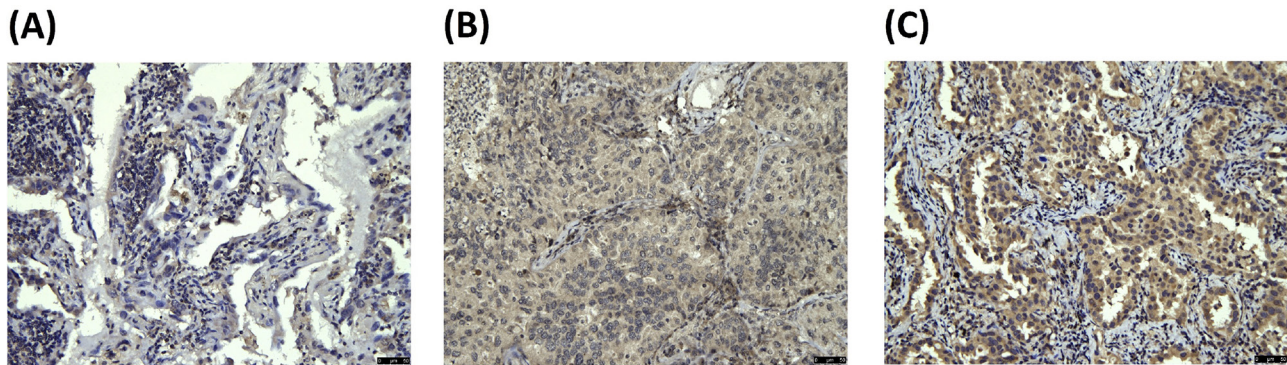


Figure 1 Representative immunostaining of EGFL6 in tissue arrays of lung adenocarcinoma specimens. EGFL6 expression levels were (A) 0, (B) 1+ and (C) 2+. EGFL6, epidermal growth factor-like domain 6.

expression had lower 5-year survival rates and shorter medium survival when compared with patients with low cytoplasmic EGFL6 expression (52.0% vs 37.0% for 5-year survival; 5.7 years vs 2.5 years for medium survival; [figure 2A](#)). The univariate and multivariate analyses revealed a borderline statistical significance for cytoplasmic EGFL6 (HR=1.519, 95% CI 0.980 to 2.355, $p=0.061$ for univariate analysis; HR=1.515, 95% CI 0.975 to 2.354, $p=0.064$ for multivariate analysis; [table 2](#)).

Significant prognostic role of cytoplasmic EGFL6 expression in young patients with lung adenocarcinoma

We examined the potential prognostic role of cytoplasmic EGFL6 in patients with lung adenocarcinoma by analysing their clinical outcomes according to clinicopathological

characteristics. We identified a significant association of cytoplasmic EGFL6 in patients with younger age. As shown in [figure 2B](#), patients younger than 69 years of age who had high cytoplasmic EGFL6 expression also had a lower 5-year survival rate and shorter median survival time when compared with patients with low cytoplasmic EGFL6 expression (65.7% vs 40.9% for 5-year survival; 8.4 years vs 2.8 years for median survival; [figure 2B](#)). We confirmed this finding using different age cut-off points: the use of the median age as a cut-off point resulted in a significantly poorer prognosis for patients with high EGFL6 (HR: 2.118, 95% CI 1.082 to 4.145, $p=0.029$; [table 3](#)). The HR was also increased in patients of younger age (HR: 2.894, 95% CI 1.245 to 6.726, $p=0.014$

Table 1 Relationships of EGFL6 expression with clinical parameters in 150 patients with lung adenocarcinoma

	Cytoplasmic staining of EGFL6		Total	P values
	Low (0, 1+)	High (2+)		
Gender				
Female	24 (34.3)	46 (65.7)	70	0.817
Male	26 (32.5)	54 (67.5)	80	
Grade				
Well	8 (36.4)	14 (63.6)	22	0.744
Moderate, poor	42 (32.8)	86 (67.2)	128	
Age				
≤63	27 (35.5)	49 (64.5)	76	0.564
>63	23 (31.1)	51 (68.9)	74	
T status				
T1	19 (35.2)	35 (64.8)	54	0.718
T2, T3, T4	31 (32.3)	65 (67.7)	96	
Lymph node metastasis				
No	26 (29.9)	61 (70.1)	87	0.292
Yes	24 (38.1)	39 (61.9)	63	
Stage				
I	19 (30.6)	43 (69.4)	62	0.558
II, III, IV	31 (35.2)	57 (64.8)	88	

EGFL6, epidermal growth factor-like domain 6.

Table 2 Influence of various parameters on overall survival in patients with lung adenocarcinoma

Univariate				Multivariate		
Variable	HR	95% CI	P values	HR	95% CI	P values
Expression of EGFL6						
Low	1.000			1.000		
High	1.519	0.980 to 2.355	0.061	1.515	0.975 to 2.354	0.064
Gender						
Female	1.000			1.000		
Male	2.184	1.450 to 3.290	<0.001	1.802	1.180 to 2.753	0.006
Age						
≤63	1.000			1.000		
>63	1.808	1.214 to 2.691	0.004	1.997	1.303 to 3.062	0.002
Stage						
I	1.000			1.000		
II, III, IV	1.871	1.232 to 2.840	0.003	2.241	1.443 to 3.481	<0.001

EGFL6, epidermal growth factor-like domain 6.

for age ≤59; HR: 2.104, 95% CI 1.184 to 3.739, p=0.011 for age ≤69; table 3).

DISCUSSION

In this study, we identified a prognostic role of cytoplasmic EGFL6 in lung adenocarcinoma, especially in patients of younger age. This is the first study to provide clinical evidence of EGFL6 expression in lung adenocarcinoma. No association was noted between EGFL6 expression and clinical parameters, but the significantly poor clinical outcome of patients with high EGFL6 expression supports the findings of previous reports regarding EGFL6 expression in other types of cancer.^{10 12 17}

The role of EGFL6 in cell division and tissue development was first identified in a non-tumour model.^{12-14 18} In a bone remodelling model, EGFL6 induced angiogenesis via a paracrine mechanism that promoted

angiogenesis and migration of endothelial cells.¹² Inhibition of phosphorylated ERK in this model decreased the ability of the cells to migrate.¹² In a zebrafish model, EGFL6 promoted angiogenesis via a mechanism that depended on the RGD domain (Arginyl-glycyl-aspartic acid domain) and on the activation of the Akt and Erk pathways.¹⁸ Loss of EGFL6 decreased the number of endothelial cells and vessels, suggesting that EGFL6 acts as a positive regulator of functional vessel formation.¹⁸

Increasing evidence supports the role of EGFL6 in regulating tumour malignancy and shows the potential of EGFL6 to serve as a prognostic marker and therapeutic target. In ovarian cancer, EGFL6 expression is associated with poor clinical outcome, which is further explained by its role in promoting cancer cell proliferation and asymmetric division.¹¹ A model using aldehyde dehydrogenase+ (ALDH⁺) ovarian cancer

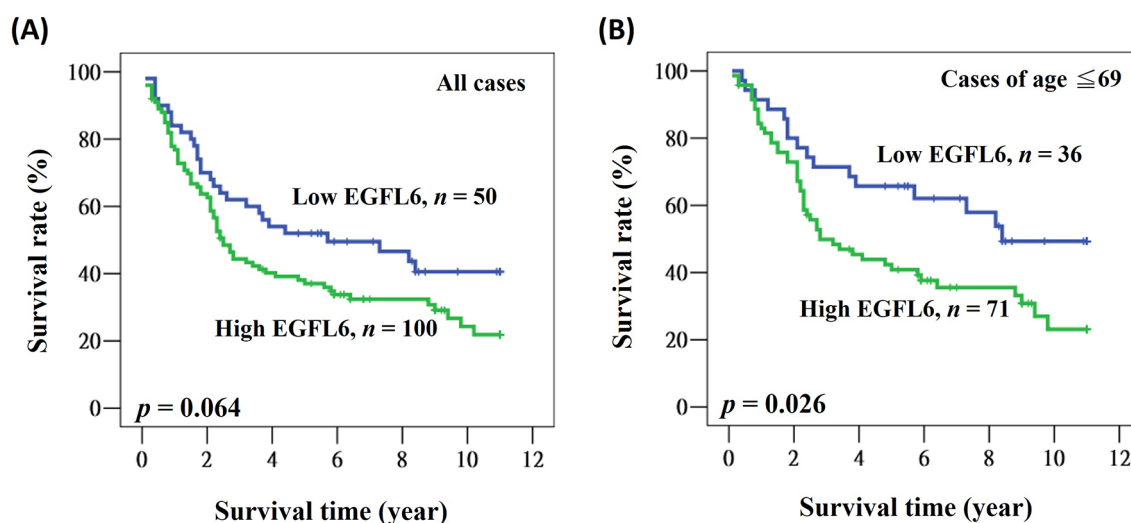


Figure 2 Kaplan-Meier actuarial analysis of EGFL6 expression with respect to overall survival of (A) all patients and (B) patients younger than 69 years of age. EGFL6, epidermal growth factor-like domain 6.

Table 3 Influence of EGFL6 on overall survival in patients with lung adenocarcinoma according to age

Multivariate				
Subgroup	Case (n)	HR of EGFL6 expression*	95% CI	P values
According to medium age				
≤63	76	2.118	1.082 to 4.145	0.029
>63	74	1.184	0.661 to 2.122	0.570
According to grouped age				
≤59	61	2.894	1.245 to 6.726	0.014
≤69	106	2.104	1.184 to 3.739	0.011
All	150	1.515	0.975 to 2.354	0.064

*Expression of EGFL6: high vs low.

EGFL6, epidermal growth factor-like domain 6.

cells showed that EGFL6 signalling involves integrin, SHP2 and ERK.¹¹ The results of a molecular analysis of ovarian tumour vascular cells obtained with IHC-guided laser-capture microdissection and genome-wide transcriptional profiling also supported this result.¹⁷ Patients with oral cancer also show high plasma EGFL6 levels and high tumour EGFL6 mRNA expression.¹⁰ The apparent association between plasma EGFL6 and the clinicopathological features in patients with oral cancer suggests a potential application of EGFL6 in monitoring tumour behaviour.¹⁰

There are some limitations to this study. The use of tissue arrays cannot represent the whole tumour and no duplicated array was investigated in this study. The limited sample size weakens the impact of our finding. Thus, more complete studies with a large sample size are still needed in the future. Also, only one clone of antibody was used, and the results should be further validated with different antibody clones.

In conclusion, our study findings demonstrated that cytoplasmic EGFL6 is specifically expressed in lung adenocarcinoma, and this increased expression is associated with poor clinical outcome. These results support the suggestion that cytoplasmic EGFL6 can serve as a valuable marker for the prediction of tumour malignancy and that it has therapeutic potential, although our findings need to be confirmed by further studies. Additional molecular studies are also needed to provide a more indepth picture regarding the function of cytoplasmic EGFL6 in lung adenocarcinoma.

Author affiliations

¹Graduate Institute of Clinical Medicine, Kaohsiung Medical University, Kaohsiung, Taiwan

²Division of Chest Medicine, Department of Internal Medicine, Changhua Christian Hospital, Changhua, Taiwan

³School of Medicine, Chung Shan Medical University, Taichung, Taiwan

⁴Institute of Medicine, Chung Shan Medical University, Taichung, Taiwan

⁵Department of Urology, Chung Shan Medical University Hospital, Taichung, Taiwan

⁶Department of Pathology, Changhua Christian Hospital, Changhua, Taiwan

⁷Department of Medical Technology, Jen-Teh Junior College of Medicine, Nursing and Management, Miaoli, Taiwan

⁸Department of Nursing, Changhua Christian Hospital, Changhua, Taiwan

⁹Division of Hematology and Oncology, Department of Internal Medicine, Kaohsiung Medical University Hospital, Kaohsiung Medical University, Kaohsiung, Taiwan

Contributors Conception and design: T-CL, K-TY; acquisition of data: C-CC, H-TH, C-MY, C-HL, Y-LC; analysis and interpretation of data: C-CC, H-TH; drafting of the manuscript: C-CC, W-WS; critical revision of the manuscript: T-CL, K-TY; statistical analysis: W-WS; supervision: T-CL, K-TY.

Funding The authors have not declared a specific grant for this research from any funding agency in the public, commercial or not-for-profit sectors.

Competing interests None declared.

Patient consent Not required.

Ethics approval The study was approved by the Institutional Review Board and the Ethics Committee of the Changhua Christian Hospital, Changhua, Taiwan (CCH IRB 170511).

Provenance and peer review Not commissioned; externally peer reviewed.

Data sharing statement There are no additional unpublished data.

Open access This is an open access article distributed in accordance with the Creative Commons Attribution Non Commercial (CC BY-NC 4.0) license, which permits others to distribute, remix, adapt, build upon this work non-commercially, and license their derivative works on different terms, provided the original work is properly cited and the use is non-commercial. See: <http://creativecommons.org/licenses/by-nc/4.0/>

© Article author(s) (or their employer(s) unless otherwise stated in the text of the article) 2018. All rights reserved. No commercial use is permitted unless otherwise expressly granted.

REFERENCES

- Sung WW, Wang YC, Lin PL, *et al.* IL-10 promotes tumor aggressiveness via upregulation of CIP2A transcription in lung adenocarcinoma. *Clin Cancer Res* 2013;19:4092–103.
- Yang SC, Lai WW, Lin CC, *et al.* Cost-effectiveness of implementing computed tomography screening for lung cancer in Taiwan. *Lung Cancer* 2017;108:183–91.
- Siegel RL, Miller KD, Jemal A. Cancer statistics, 2017. *CA Cancer J Clin* 2017;67:7–30.
- Hanahan D, Weinberg RA. Hallmarks of cancer: the next generation. *Cell* 2011;144:646–74.
- Balkwill F. Cancer and the chemokine network. *Nat Rev Cancer* 2004;4:540–50.
- Sung WW, Wang YC, Cheng YW, *et al.* A polymorphic -844T/C in fast promoter predicts survival and relapse in non-small cell lung cancer. *Clin Cancer Res* 2011;17:5991–9.
- Davis CG. The many faces of epidermal growth factor repeats. *New Biol* 1990;2:410–9.
- Yeung G, Mulero JJ, Berntsen RP, *et al.* Cloning of a novel epidermal growth factor repeat containing gene EGFL6: expressed in tumor and fetal tissues. *Genomics* 1999;62:304–7.

9. Singh AB, Harris RC. Autocrine, paracrine and juxtacrine signaling by EGFR ligands. *Cell Signal* 2005;17:1183–93.
10. Chuang CY, Chen MK, Hsieh MJ, *et al.* High level of plasma EGFL6 is associated with clinicopathological characteristics in patients with oral squamous cell carcinoma. *Int J Med Sci* 2017;14:419–24.
11. Bai S, Ingram P, Chen YC, *et al.* EGFL6 regulates the asymmetric division, maintenance, and metastasis of ALDH+ ovarian cancer cells. *Cancer Res* 2016;76:6396–409.
12. Chim SM, Qin A, Tickner J, *et al.* EGFL6 promotes endothelial cell migration and angiogenesis through the activation of extracellular signal-regulated kinase. *J Biol Chem* 2011;286:22035–46.
13. Chim SM, Tickner J, Chow ST, *et al.* Angiogenic factors in bone local environment. *Cytokine Growth Factor Rev* 2013;24:297–310.
14. Wang X, Wang X, Yuan W, *et al.* Egfl6 is involved in zebrafish notochord development. *Fish Physiol Biochem* 2015;41:961–9.
15. Hwang JC, Sung WW, Tu HP, *et al.* The overexpression of FEN1 and RAD54B may act as independent prognostic factors of lung adenocarcinoma. *PLoS One* 2015;10:e0139435.
16. Sung WW, Lin YM, Wu PR, *et al.* High nuclear/cytoplasmic ratio of Cdk1 expression predicts poor prognosis in colorectal cancer patients. *BMC Cancer* 2014;14:951.
17. Buckanovich RJ, Sasaroli D, O'Brien-Jenkins A, *et al.* Tumor vascular proteins as biomarkers in ovarian cancer. *J Clin Oncol* 2007;25:852–61.
18. Wang X, Yuan W, Wang X, *et al.* The somite-secreted factor maeg promotes zebrafish embryonic angiogenesis. *Oncotarget* 2016;7:77749–63.