

Research Article

SRM-MS Method Development for Hepcidin-25 Peptide

Kyung-Cho Cho,¹ Byoung-Kyu Cho,² Jin Woo Jung,² Ye Ji Lee,^{3,4} Eun Bong Lee ^{3,4}
and Eugene C. Yi ^{2,5}

¹Department of Pathology, Johns Hopkins University, Baltimore, MD 21287, USA

²Department of Molecular Medicine and Biopharmaceutical Science, Graduate School of Convergence and Technology, School of Medicine of School of Pharmacy, Seoul National University, Seoul, Republic of Korea

³Division of Rheumatology of Internal Medicine, Seoul National University College of Medicine, Seoul, Republic of Korea

⁴Graduate Course of Translational Medicine (Immunology), Seoul National University College of Medicine, Seoul, Republic of Korea

⁵Department of Biomedical Engineering, Seoul National University Hospital, Seoul, Republic of Korea

Correspondence should be addressed to Eun Bong Lee; leb6505@gmail.com and Eugene C. Yi; euyi@snu.ac.kr

Received 14 December 2017; Revised 18 March 2018; Accepted 5 April 2018; Published 14 June 2018

Academic Editor: Bradley B. Schneider

Copyright © 2018 Kyung-Cho Cho et al. This is an open access article distributed under the Creative Commons Attribution License, which permits unrestricted use, distribution, and reproduction in any medium, provided the original work is properly cited.

As advanced mass spectrometry- (MS-) based hepcidin analysis offers to overcome the limitations in analytical methods using antihepcidin, further improvement of MS detection sensitivity for the peptide may enhance the diagnostic value of the hepcidin for various iron-related disorders. Here, improved MS detection sensitivity of hepcidin has been achieved by reducing the disulfide bonds in hepcidin, by which proton accessibility increased, compared to the intact hepcidin peptide. Comparing the ionization efficiencies of reduced and nonreduced forms of hepcidin, the reduced form of hepcidin showed an increase in ionization efficiency more than two times compared to the nonreduced form of hepcidin. We also demonstrated improved detection sensitivity of the peptide in SRM assay. We observed a significant improvement of detection sensitivity at the triple-quadrupole MS platform, that the ionization efficiency increased at least twice more, and that the limit of detection (LOD) increased more than 10 times in the concentration ranges of 1 fmol to 10 fmol of hepcidin. In this study, we demonstrated the usefulness of the hepcidin modification for overall enhancement of the ionization efficiencies of the hepcidin peptide in the MS-based quantitative measurement assay.

1. Introduction

Hepcidin, a folded 25-residue peptide hormone stabilized by four disulfide bonds, plays an important role in the regulation of iron metabolism in mammals, such as digestive iron absorption and macrophage iron recycling [1–3]. Although anemia of inflammation and chronic kidney diseases are developed in various clinical settings, the most direct causes of the diseases are associated with the destruction of homeostasis of iron metabolism [4–6]. Hence, hepcidin has been considered as an important clinical utility for the diagnosis and management of a wide range of iron-related disorders [7–10]. Quantitative immunoassays based on the use of antihepcidin antibodies have been developed for quantitative assessment of hepcidin concentrations in the patient's serum and urine

[11–15]. However, the antibody-based immunoassays have the limitations because it is interfered by *N*-terminal deletion forms as well as isoforms such as prohepcidin and pre-prohepcidin [16, 17]. Recent advances in mass spectrometry- (MS-) based quantitative assays (e.g., SRM assay) for hepcidin complement the immunoassays by overcoming hepcidin (25-amino acids) detection specificity, reproducibility, and accuracy [18–22]. In addition, absolute concentrations of hepcidin can be measured with synthetic hepcidin labeled with heavy stable isotopes in SRM assay [23, 24].

Further improvement of MS detection sensitivity for hepcidin would increase its clinical utility. Peptide MS ionization capability is mainly dependent on its amino acid composition, such as hydrophilicity or hydrophobicity, presence or absence of a chemical modification, and protonation capability.

Intradisulfide bonds of hepcidin interrupt the proton accessibility to the peptide, which decreases the peptide ionization efficiency in MS analysis [25, 26]. Reduction of disulfide bonds unfolds the protein/peptide structure and allows more proton accessibility to the peptides for protonation, which increases the peptide charge states.

In this study, we improved the ionization efficiency of intact hepcidin by reducing intradisulfide bonds in hepcidin. To validate the sensitivity enhancement of reduced form of hepcidin, we performed SRM assay with optimized peptide transitions and determined its LOD, thus validating the method for measurement of hepcidin.

2. Materials and Methods

2.1. Materials. Human hepcidin-25 peptide (DTHFPICIFCCGCCCHRSKCGMCCCKT, SML1118, Sigma-Aldrich, purify >95%, 4 disulfide bonds; C7-C23, C10-C13, C11-19, and C14-C22), stable isotope- (SI-) labeled human hepcidin-25 peptide, ($^{13}\text{C}_9/^{15}\text{N}$]Phe4,9, ^{15}N]Gly12, PLP-3405-v, Peptide Institute Inc., Osaka, Japan), dithiothreitol (DTT), iodoacetamide (IAA), and ammonium bicarbonate were purchased from Sigma-Aldrich (St. Louis, MO, USA). C18 spin column (Cat no. #89870) was purchased from Pierce (Rockford, IL, USA). HPLC-grade water and acetonitrile were purchased from Burdick & Jackson (Philipsburg, NJ, USA).

2.2. Reduction and Alkylation of Hepcidin. For reducing the intradisulfide bonds in hepcidin peptide, the peptide was incubated with 10 mM DTT in 50 mM ammonium bicarbonate (pH 7.5) for 30 min at 37°C, and cysteine alkylation was performed with 55 mM IAA for 30 min at RT in dark. Peptides were purified using a C18 spin column prior to LC-MS/MS analysis.

2.3. Extraction of Serum Hepcidin Peptides. Two 100 μL of human serum samples containing 50 pmol of SI-hepcidin were prepared. Hepcidin peptides were extracted with 90% ACN in 0.1% formic acid in water after incubation for 20 min at 4°C. After drying the supernatants, one of the extracted hepcidin peptide samples was reduced and alkylated with DTT and IAA. Hepcidin peptides were desalted prior to the SRM assay, and only 1/10 of desalted sample was used for analysis. The serum hepcidin was extracted from the serial serum samples (100, 200, 400, and 800 μL) with 100 pmol of SI-hepcidin spiked-in.

2.4. LC-MS/MS Analysis. Both intact and modified hepcidin peptides were analyzed using Q Exactive™ mass spectrometer (Thermo Fisher Scientific Inc., Germany) interfaced with easy-nLC1000 (Thermo Fisher Scientific, Waltham, MA, USA) as described previously [27]. Equal amount hepcidin peptides were loaded onto a precolumn (PepMap, 75 μm ID μm *2 cm 3 μm , 164535, Thermo Fisher Scientific, USA) and separated using an analytic column (PepMap, 75 μm ID*50 cm 3 μm , ES803, Thermo Fisher Scientific, USA). The sample was eluted by solvent A (0.1% formic acid in water) and solvent B

(0.1% formic acid in acetonitrile). The mobile phase gradient parameter was set follow as: time (B%) 0~3 min (5% solvent B), 50 (40%), 55 (80%), 57 (80%), 60 (5%), and 70 (5%) at a flow rate of 300 nL/min. LC-MS/MS data were acquired on a mass resolution of 70 K at 200 m/z using Q Exactive mass spectrometer. The instrument was operated in data-dependent mode; top 10 intensity precursor ions were selected for subsequent MS/MS analysis by HCD with a normalized collision energy (NCE) value of 27 and, resolution of MS/MS was set as 17 K at 200 m/z.

2.5. SRM Analysis. SRM analysis was performed using an Agilent 6490 triple quadrupole mass spectrometer (Agilent Technologies, USA) interfaced with an Agilent 1290 Infinity System (Agilent Technologies, USA). Peptides were eluted by reverse-phase UPLC on a Zorbax Eclipse Plus C18 column (150 \times 2.1 mm, 1.8 μm particle size, Agilent Technologies, USA) at 0.25 mL/min over a 30 min ACN gradient. The column temperature was maintained at 50°C. The gradient was set as follows using mobile phases A (0.1% formic acid in water) and B (0.1% formic acid and 5% water in ACN): linear 0–40% B for 20 min, 40–90% B for 20.1 min, isocratic 90% B for 5 min, linear 90–0% B for 0.1 min, and isocratic 0% B for 5 min. The AJS ESI voltage was set as 3500 V with a gas flow of 12 L/min, source temperature of 250°C, and fragmentor voltage of 5. Each scan was collected by dwell time of 20 ms.

3. Results

3.1. Characterization of the Modified Hepcidin. To improve MS detection sensitivity of hepcidin, the disulfide bonds of intact hepcidin peptide (hepcidin-I) was reduced, and the resulting free thiols were subsequently modified by alkylation to linearize the peptide (hepcidin-M) as described in Materials and Methods. To verify the thiol modification of hepcidin-I, a mixture of equal amounts (10 pmol) of both peptides were analyzed by LC-MS/MS. As shown in Figure 1, a series of γ ions that are corresponding to peptide fragments of nonreduced cysteine residues are observed (Figure 1(a)), whereas the MS/MS spectrum of hepcidin-M shows a series of b and γ ions that are matched to the reduced forms of cysteine residues, indicating that all the disulfide bonds were reduced and alkylated (Figure 1(b)).

MS ionization efficiencies of both peptides were verified by comparing their signal intensities at different charge states of Hepcidin-I (m/z, 2787.0258 Da) and hepcidin-M (m/z, 3251.2602 Da). This experiment was conducted to select the most intense signal intensities of peptide charge states for the purpose of the hepcidin LC/MS assay development. Figure 2 shows extracted ion chromatograms (XIC) for relative abundances of different charge states of Hepcidin-I ($z = 2, 3, 4,$ and 5) (Figure 2(a)) and of Hepcidin-M ($z = 3, 4, 5,$ and 6) (Figure 2(b)). Among these charge states, it appears that the +4 charge state of Hepcidin-I shows the highest peptide signal intensity, whereas hepcidin-M shows the most intense peptide signal when it is in the +5 charge state. Hepcidin-M tends to give more intense signal

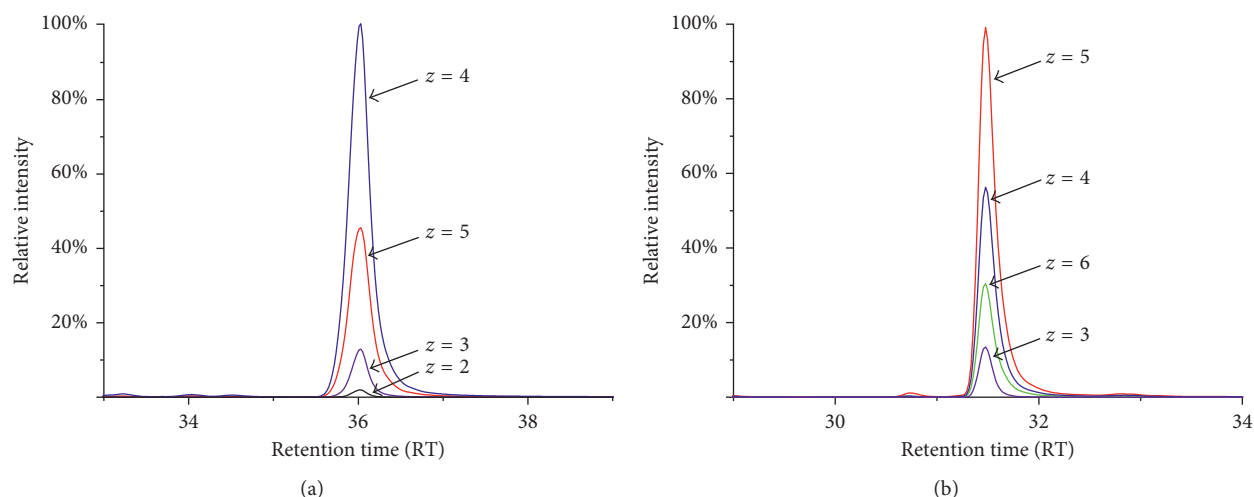


FIGURE 2: Extracted ion chromatograms of hepcidin-I and hepcidin-M according to charge state. (a) A hepcidin-I. (b) A hepcidin-M.

TABLE 1: Relative ionization value of hepcidin-M to hepcidin-I according to charge state.

Charge state	Hepcidin-I		Hepcidin-M		Relative ionization value (hepcidin-M/I)
	m/z	Area	m/z	Area	
2	1394.52	9.7E+07	1626.64	3.8E+08	3.92
3	930.02	1.3E+09	1084.76	3.0E+09	2.34
4	697.76	9.0E+09	813.82	8.4E+09	0.93
5	558.41	8.7E+09	651.26	2.3E+10	2.69
6	465.51	8.9E+07	542.88	3.7E+09	41.76
Sum of area		1.9E+10		3.9E+10	2.03

As shown in Table 1, the relative ionization efficiency of hepcidin-M is higher than hepcidin-I (2-fold to as high as 40-fold) in most of their charge states, except the +4 charge states, indicating that the relative ionization efficiency of hepcidin enhanced by the derivatization.

3.3. SRM Assay Optimization. To further demonstrate quantitative assessment of hepcidin by a targeted MS approach, peptide transitions of hepcidin-I and hepcidin-M were optimized for SRM assay using triple quadrupole mass spectrometer (Agilent 6490 QQQ). “Full scan mode” was performed to identify peptide precursor (MS^1) ions for both hepcidin peptides. Similar charge state-dependent peptide ionization was observed between the two MS platforms (QQQ and Q Exactive). Both hepcidin-I and hepcidin-M produced intense MS^1 peptide signals when they were at +4 and +5, respectively (data not shown). To select the optimal fragment (MS^2) ions for both peptides, “product ion scan” was performed by varying m/z having different charge states and collision energy (Supplementary Materials Figure 1). Although the hepcidin-I showed the highest signal intensity of MS^1 ions at +4 charge state, the +5 charge state of MS^1 of the peptide generated more intense MS^2 ion intensities (5.3×10^4 (y_{19}^{+++} , at collision energy 15 V) and 1.3×10^4 (y_{21}^{+++} , at 15 V)) than the +4 charge state peptide (1.2×10^4 (y_{19}^{+++} , at 25 V) and 8×10^3 (y_{21}^{+++} , 25 V)). The two highest y ions of hepcidin-M were 2.6×10^5 (y_{17}^{+++} ,

at 15 V) and 1.6×10^5 (y_{16}^{+++} , at 15 V) at the +5 charge state. These MS^2 ions were selected for the SRM assay optimization. Further collision energy optimization was automatically selected using “Peptide Optimizer” software. The optimized peptide transitions are summarized in Table 2.

To evaluate the detection sensitivity in SRM assay for both hepcidin-I and hepcidin-M with optimized peptide transition ions, three replicate analysis for both peptides were conducted in the concentration ranges from 1 fmol to 1 pmol (1, 5, 10, 50, 100, and 500 fmol and 1 pmol) using Agilent 6490 QQQ. Peptide transitions (peak area) were calculated using Skyline (MaCcross lab software) [30]. Among all the peptide transitions, the highest peptide transition values were selected and the average value of three replications was calculated. Quantitative linearity curves (concentration vs calculated peak area ratios) for both peptides are quantitatively linear. As shown in Figure 3(a), R^2 values were obtained from each linear curve and estimated for hepcidin-I and -M as 0.9991 and 0.9993, respectively. At concentration of 50 and 100 fmol, peak area of hepcidin-M (1.95×10^6 and 3.77×10^6) is at least twice more than that of hepcidin-I (9.00×10^5 and 1.86×10^6). At lower concentration, the peak area of 10, 50, and 100 fmol of hepcidin-M were 6.31×10^3 , 1.16×10^5 , and 3.36×10^5 and of hepcidin-I were 3.90×10^2 , 2.94×10^4 , and 1.05×10^5 , suggesting that the detection sensitivity of hepcidin-M is better than hepcidin-I. The limit of detection (LOD) of each peptide was determined by S/N (signal-to-noise ratio) value

TABLE 2: A transition list for SRM assay of each of the hepcidin-I and -M containing precursor ion, product ion, and CE values.

Peptide sequence	Precursor ion	Product ion	Dwell time	Collision energy	Fragment
DTHFPICIFCCGCCHRSKCGMCCKT	558.6	763.3	20	16	y21 ³⁺
DTHFPICIFCCGCCHRSKCGMCCKT	558.6	693.3	20	14	y19 ³⁺
DTHFPIC*IFC*C*GC*C*HRSKC*GMC*C*KT	651.6	757.1	20	14	y17 ³⁺
DTHFPIC*IFC*C*GC*C*HRSKC*GMC*C*KT	651.6	708.4	20	14	y16 ³⁺

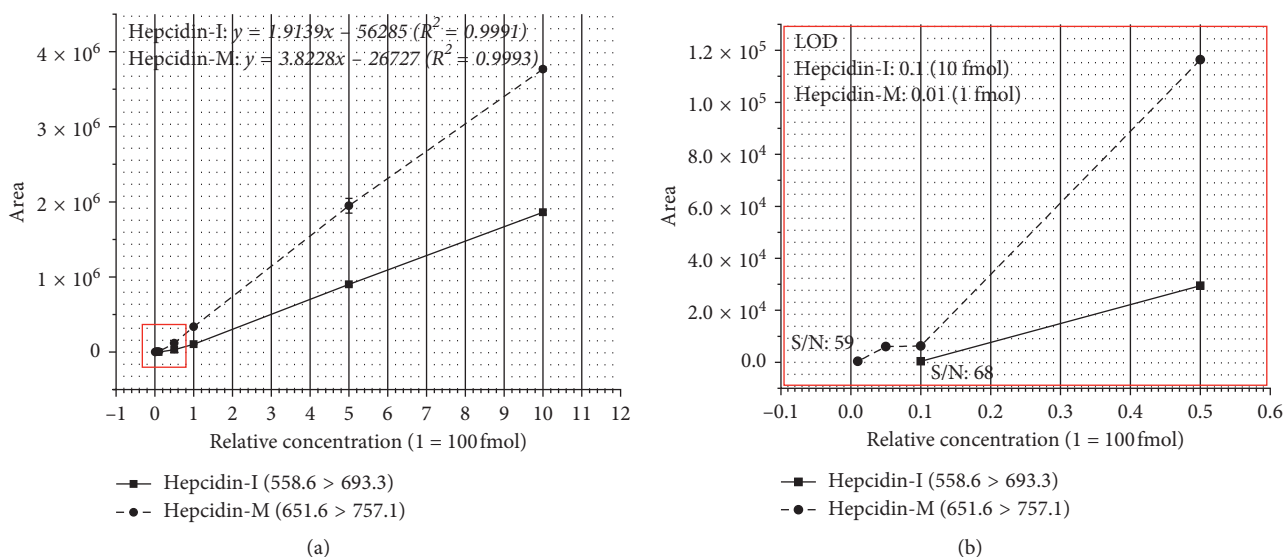


FIGURE 3: The graph shows the peak area for hepcidin amount ranging from 1 fmol to 1 pmol (1, 5, 10, 50, 100, and 500 fmol and 1 pmol). The graph of hepcidin-I and -M were presented using 558.6 > 693.3 and 651.6 > 757.1 of transitions, respectively. (a) R² of hepcidin-I and -M were obtained by the equations of $y = 1.9139x - 56285$ and $y = 3.8228x - 26727$, respectively. (b) An enlarged graph of the red box portion in (a), showing the peak area according to the amount of 1 fmol to 50 fmol and S/N value of LOD for both hepcidin-I and hepcidin-M.

of 10 or more. As shown in Figure 3(b), the LODs of hepcidin-I and -M were 10 and 1 fmol, respectively. Hepcidin-I showed the S/N value of 10 more (S/N: 69) at 100 fmol but showed 10 less at 10 and 50 fmol (data not shown), while hepcidin-M showed the S/N value of greater than 10 at 1 fmol (S/N: 58). These results also indicate that the LOD of hepcidin peptide improved 10-fold after reduction and alkylation modification in SRM assay optimization.

The improved hepcidin peptide detection sensitivity by the reduction/alkylation modification was further verified with human serum samples. Extracted serum hepcidin peptides spiked with equal amounts of SI-hepcidin were quantitatively measured by the SRM analysis. The results of the SRM analysis showed that the relative peak ratio between the endogenous hepcidin-M and SI-hepcidin-M was 0.01 (50 fmol of serum hepcidin in the 10 μ L of serum sample), whereas the relative peak ratio for hepcidin-I could not be determined, indicating that serum hepcidin was detected only with the reduced hepcidin form (Table 3). Endogenous hepcidin-I and hepcidin-M levels were quantitatively measured in the serial serum samples (100, 200, 400, and 800 μ L) with 100 pmol of SI-hepcidin spiked-in. Equal amount of SI-hepcidin (100 pmol) were spiked into the serum samples (100 to 800 μ L). Endogenous hepcidin-I and -M levels were calculated based on the ratio between endogenous- and SI-hepcidin showing the quantitative correlation (Figure 4 and Supplementary Materials Figure 2).

4. Discussion

Hepcidin has shown to have an important clinical utility for the diagnosis and management of a wide range of iron-related disorders, the diagnostic value for various iron-related disorders. Although many analytical methods including antibody-based assays have been developed to measure the hepcidin p level, quantitative assessment of hepcidin using SRM-MS has emerged as a promising quantitative technique to measure the hepcidin level owing to the numerous advantages of mass spectrometry-based analytical method. In order to improve the hepcidin detection sensitivity SRM assay, we derivatized the intra-disulfide bonds in hepcidin using the DTT and IAA reagents, which are the most common chemical reactions to reduce the disulfide bonds. In this experiment, modification of the hepcidin showed a substantial increase in ionization efficiency of more than 2 times. The LOD value is 10 times lower than that of the conventional one by the modification. Spiking of human serum samples with a known amount of stable isotope-labeled synthetic hepcidin peptide allows measurement of the corresponding hepcidin peptide present in the serum sample.

In blood and urine, hepcidin is present as the form of hepcidin-25 as well as in truncated form of hepcidin isoforms, hepcidin-20, and hepcidin-22 [31]. These truncated

TABLE 3: Relative ratio of peak area between serum hepcidin-M and SI-hepcidin-I.

	Peak area		Relative ratio (endogenous/isotope hepcidin)
	Endogenous	Stable isotope	
Hepcidin-I	N/A	12105	N/A
Hepcidin-M	301	30542	0.01

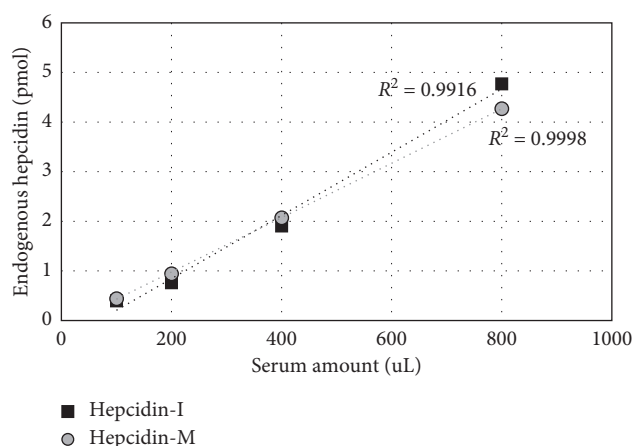


FIGURE 4: The graph shows correlation between serum amount (μL) and endogenous hepcidin (pmol). Hepcidin amount was calculated using the peak area of SI-hepcidin (100 pmol) acquired from SRM analysis.

hepcidin isoforms are mainly in the blood of patients with sepsis-induced acute kidney failure; however, it is difficult to detect because the amount of those hepcidin isoforms is much less than that of hepcidin-25. Although biological samples such as blood and urine are noninvasive sample sources, collecting large quantities is still a burden on patients. Hence, we anticipate that hepcidin measurement using the improved SRM assay may require an ample amount of samples from patients than the current methods of hepcidin measurement.

5. Conclusion

In this study, we demonstrate the developmental SRM assay for hepcidin. By simply reducing disulfide bond in hepcidin, ionization efficiency has been increased at least 2 folds more. Modified hepcidin also has been shown that sensitivity in SRM assay increased 10 folds more than unmodified form. We also further demonstrated the improvement of serum hepcidin peptide detection sensitivity by the reduction/alkylation modification and quantitative similarity with hepcidin-I in the SRM assay. This study provides improved detection sensitivity for hepcidin, which may increase its clinical utility for the diagnosis and management of a wide range of iron-related disorders.

Conflicts of Interest

The authors declare that there are no conflicts of interest regarding the publication of this article.

Authors' Contributions

Kyung-Cho Cho and Byoung-Kyu Cho contributed equally to this work.

Acknowledgments

This research was supported by the Basic Science Research Program (NRF-2012M3A9B9036669 and NRF-2015R1C1A1A02037274 to Byoung-Kyu Cho and Eugene C. Yi) and the Bio & Medical Technology Development Program (NRF-2015M3A9B6073835 to Byoung-Kyu Cho and Eugene C. Yi) through the National Research Foundation of Korea (NRF) funded by the Ministry of Science, ICT & Future Planning (NRF-2016R1A5A1010764 to Eugene C. Yi).

Supplementary Materials

Supplementary 1. Figure 1: MS/MS spectra according to different collision energy (CE) values. The red lettering in the spectral figure represented the γ fragment ion selected for MRM assay. (a) and (b) are the MS/MS spectra of the 698.0 and 558.6 m/z derived from hepcidin-I. (c) and (d) are MS/MS spectra of 543.0 and 651.8 m/z derived from hepcidin-M.

Supplementary 2. Figure 2: the graphs show the extracted ion chromatography (EIC) of hepcidin-I (a) and hepcidin-M (b) obtained from SRM assay using 800 μL of serum sample. Each EIC shows the peak intensity of endogenous- and SI-hepcidin (left) and also shows the peak intensity according to transitions (right).

References

- [1] R. Deicher and W. H. Horl, "Hepcidin: a molecular link between inflammation and anaemia," *Nephrology Dialysis Transplantation*, vol. 19, no. 3, pp. 521–524, 2004.
- [2] R. Daher, H. Manceau, and Z. Karim, "Iron metabolism and the role of the iron-regulating hormone hepcidin in health and disease," *La Presse Médicale*, vol. 46, no. 12, pp. e272–e278, 2017.
- [3] P. J. Schmidt, "Regulation of iron metabolism by hepcidin under conditions of inflammation," *Journal of Biological Chemistry*, vol. 290, no. 31, pp. 18975–18983, 2015.
- [4] C. N. Roy, H. H. Mak, I. Akpan, G. Losyev, D. Zurakowski, and N. C. Andrews, "Hepcidin antimicrobial peptide transgenic mice exhibit features of the anemia of inflammation," *Blood*, vol. 109, no. 9, pp. 4038–4044, 2007.
- [5] D. A. Weinstein, "Inappropriate expression of hepcidin is associated with iron refractory anemia: implications for the anemia of chronic disease," *Blood*, vol. 100, no. 10, pp. 3776–3781, 2002.
- [6] J. Zimmermann, S. Herrlinger, A. Pruy, T. Metzger, and C. Wanner, "Inflammation enhances cardiovascular risk and mortality in hemodialysis patients," *Kidney International*, vol. 55, no. 2, pp. 648–658, 1999.
- [7] T. Ganz, "Hepcidin, a key regulator of iron metabolism and mediator of anemia of inflammation," *Blood*, vol. 102, no. 3, pp. 783–788, 2003.

- [8] J. J. Kroot, H. Tjalsma, R. E. Fleming, and D. W. Swinkels, "Hepcidin in human iron disorders: diagnostic implications," *Clinical Chemistry*, vol. 57, no. 12, pp. 1650–1669, 2011.
- [9] D. Girelli, E. Nemeth, and D. W. Swinkels, "Hepcidin in the diagnosis of iron disorders," *Blood*, vol. 127, no. 23, pp. 2809–2813, 2016.
- [10] A. Miseta, J. Nagy, T. Nagy, V. S. Poór, Z. Fekete, and K. Sipos, "Hepcidin and its potential clinical utility," *Cell Biology International*, vol. 39, no. 11, pp. 1191–1202, 2015.
- [11] E. Nemeth, "Hepcidin, a putative mediator of anemia of inflammation, is a type II acute-phase protein," *Blood*, vol. 101, no. 7, pp. 2461–2463, 2003.
- [12] T. Ganz, G. Olbina, D. Girelli, E. Nemeth, and M. Westerman, "Immunoassay for human serum hepcidin," *Blood*, vol. 112, no. 10, pp. 4292–4297, 2008.
- [13] C. Delaby and C. Beaumont, "[Serum hepcidin assay in 2011: where do we stand?]," *Annales de Biologie Clinique*, vol. 70, no. 4, pp. 377–386, 2012.
- [14] J. J. C. Kroot, E. H. J. M. Kemna, S. S. Bansal et al., "Results of the first international round robin for the quantification of urinary and plasma hepcidin assays: need for standardization," *Haematologica*, vol. 94, no. 12, pp. 1748–1752, 2009.
- [15] G. Dahlfors, P. Stål P, E. C. Hansson et al., "Validation of a competitive ELISA assay for the quantification of human serum hepcidin," *Scandinavian Journal of Clinical and Laboratory Investigation*, vol. 75, no. 8, pp. 652–658, 2015.
- [16] Y. E. C. Taes, B. Wuyts, J. R. Boelaert, A. S. De Vriese, and J. R. Delanghe, "Prohepcidin accumulates in renal insufficiency," *Clinical Chemistry and Laboratory Medicine (CCLM)*, vol. 42, no. 4, pp. 387–389, 2004.
- [17] S. P. Hsu, C.-K. Chiang, C.-T. Chien, and K.-Y. Hung, "Plasma prohepcidin positively correlates with hematocrit in chronic hemodialysis patients," *Blood Purification*, vol. 24, no. 3, pp. 311–316, 2006.
- [18] D. G. Ward, K. Roberts, P. Stonelake et al., "SELDI-TOF-MS determination of hepcidin in clinical samples using stable isotope labelled hepcidin as an internal standard," *Proteome Science*, vol. 6, p. 28, 2008.
- [19] U. Kobold, T. Dulffer, M. Dangl et al., "Quantification of hepcidin-25 in human serum by isotope dilution micro-HPLC-tandem mass spectrometry," *Clinical Chemistry*, vol. 54, no. 9, pp. 1584–1586, 2008.
- [20] N. Muraio, M. Ishigai, H. Yasuno, Y. Shimonaka, and Y. Aso, "Simple and sensitive quantification of bioactive peptides in biological matrices using liquid chromatography/selected reaction monitoring mass spectrometry coupled with trichloroacetic acid clean-up," *Rapid Communications in Mass Spectrometry*, vol. 21, no. 24, pp. 4033–4038, 2007.
- [21] C. Delaby, P. Bros, J. Vialaret et al., "Quantification of hepcidin-25 in human cerebrospinal fluid using LC-MS/MS," *Bioanalysis*, vol. 9, no. 4, pp. 337–347, 2017.
- [22] R. Pechlaner, S. Kiechl, M. Mayr et al., "Correlates of serum hepcidin levels and its association with cardiovascular disease in an elderly general population," *Clinical Chemistry and Laboratory Medicine (CCLM)*, vol. 54, no. 1, pp. 151–161, 2016.
- [23] S. S. Bansal, J. M. Halket, A. Bomford et al., "Quantitation of hepcidin in human urine by liquid chromatography-mass spectrometry," *Analytical Biochemistry*, vol. 384, no. 2, pp. 245–253, 2009.
- [24] S. Li, T. Nakayama, A. Akinc, S.-L. Wu, and B. L. Karger, "Development of LC-MS methods for quantitation of hepcidin and demonstration of siRNA-mediated hepcidin suppression in serum," *Journal of Pharmacological and Toxicological Methods*, vol. 71, pp. 110–119, 2015.
- [25] J. A. Loo, C. G. Edmonds, H. R. Udseth, and R. D. Smith, "Effect of reducing disulfide-containing proteins on electrospray ionization mass spectra," *Analytical Chemistry*, vol. 62, no. 7, pp. 693–698, 1990.
- [26] J. B. Fenn, M. Mann, C. Meng, S. Wong, and C. Whitehouse, "Electrospray ionization for mass spectrometry of large biomolecules," *Science*, vol. 246, no. 4926, pp. 64–71, 1989.
- [27] K.-C. Cho, J. W. Kang, Y. Choi, T. W. Kim, and K. P. Kim, "Effects of peptide acetylation and dimethylation on electrospray ionization efficiency," *Journal of Mass Spectrometry*, vol. 51, no. 2, pp. 105–110, 2016.
- [28] R. D. Smith, J. A. Loo, R. R. Ogorzalek Loo, M. Busman, and H. R. Udseth, "Principles and practice of electrospray ionization-mass spectrometry for large polypeptides and proteins," *Mass Spectrometry Reviews*, vol. 10, no. 5, pp. 359–451, 1991.
- [29] J. B. Fenn, "Ion formation from charged droplets: Roles of geometry, energy, and time," *Journal of the American Society for Mass Spectrometry*, vol. 4, no. 7, pp. 524–535, 1993.
- [30] B. MacLean, D. M. Tomazela, N. Shulman et al., "Skyline: an open source document editor for creating and analyzing targeted proteomics experiments," *Bioinformatics*, vol. 26, no. 7, pp. 966–968, 2010.
- [31] S. Handley, L. Couchman, P. Sharp, I. Macdougall, and C. Moniz, "Measurement of hepcidin isoforms in human serum by liquid chromatography with high resolution mass spectrometry," *Bioanalysis*, vol. 9, no. 6, pp. 541–553, 2017.