



Published in final edited form as:

*Prostate Cancer Prostatic Dis.* 2018 June ; 21(2): 196–203. doi:10.1038/s41391-018-0045-x.

## Serum cholesterol levels and tumor growth in a PTEN-null transgenic mouse model of prostate cancer

Emma H. Allott<sup>1</sup>, Elizabeth M. Masko<sup>2</sup>, Alexis R. Freedland<sup>3</sup>, Everardo Macias<sup>3</sup>, Kristine Pelton<sup>4</sup>, Keith R. Solomon<sup>5</sup>, Elahe A. Mostaghel<sup>6,7</sup>, George V. Thomas<sup>8,9</sup>, Salvatore V. Pizzo<sup>10</sup>, Michael R. Freeman<sup>3</sup>, and Stephen J. Freedland<sup>3,11</sup>

<sup>1</sup>Department of Nutrition, University of North Carolina at Chapel Hill, Chapel Hill, NC

<sup>2</sup>Department of Surgery, Duke University Medical Center, Durham, NC

<sup>3</sup>Department of Surgery, Samuel Oschin Comprehensive Cancer Institute, Cedars-Sinai Medical Center, Los Angeles, CA

<sup>4</sup>Department of Medical Oncology, Dana-Farber Cancer Institute, Boston, MA

<sup>5</sup>The Urological Diseases Research Center, Boston Children's Hospital, Boston, MA (current address: Applied Photophysics, Beverly, MA)

<sup>6</sup>Division of Oncology, Department of Medicine, University of Washington, Seattle, WA

<sup>7</sup>Clinical Research Division, Fred Hutchinson Cancer Research Center, Seattle, WA

<sup>8</sup>Knight Cancer Institute, Oregon Health and Science University, Portland, OR

<sup>9</sup>Pathology and Laboratory Medicine, Oregon Health and Science University, Portland OR

<sup>10</sup>Department of Pathology, Duke University Medical Center, Durham, NC

<sup>11</sup>Division of Urology, Veterans Affairs Medical Center, Durham, NC

### Abstract

**Background**—Some, but not all, epidemiologic evidence supports a role for cholesterol, the precursor for steroid hormone synthesis, in prostate cancer. Using a PTEN-null transgenic mouse model of prostate cancer, we tested the effect of modifying serum cholesterol levels on prostate tumor development and growth. We hypothesized that serum cholesterol reduction would lower tumor androgens and slow prostate cancer growth.

**Methods**—PTEN<sup>loxP/loxP</sup>-Cre<sup>+</sup> mice consuming *ad libitum* high fat, high cholesterol diets (40% fat, 1.25% cholesterol) were randomized after weaning to receive the cholesterol uptake inhibitor, ezetimibe (30 mg/kg/day), or no intervention, and sacrificed at 2, 3 or 4 months of age. Serum cholesterol and testosterone were measured by ELISA and intraprostatic androgens by mass

Users may view, print, copy, and download text and data-mine the content in such documents, for the purposes of academic research, subject always to the full Conditions of use: [http://www.nature.com/authors/editorial\\_policies/license.html#terms](http://www.nature.com/authors/editorial_policies/license.html#terms)

Corresponding author: Dr. Stephen J Freedland; Mailing address: Cedars-Sinai Medical Center, 8635 West 3rd Street, Suite 1070W, Los Angeles, CA 90048, USA; Tel: 310-423-3497; Fax: 310-423-4711; [stephen.freedland@cshs.org](mailto:stephen.freedland@cshs.org).

Supplementary information is available at PCAN's website

**Conflicts of interest:** The authors have no conflicts of interest.

spectrometry. Prostate histology was graded, and proliferation and apoptosis in tumor epithelium and stroma was assessed by Ki67 and TUNEL, respectively.

**Results**—Ezetimibe-treated mice had lower serum cholesterol at 4 months ( $p=0.031$ ). Serum cholesterol was positively correlated with prostate weight ( $p=0.033$ ) and tumor epithelial proliferation ( $p=0.069$ ), and negatively correlated with tumor epithelial apoptosis ( $p=0.004$ ). Serum cholesterol was unrelated to body weight ( $p=0.195$ ). Tumor stromal cell proliferation was reduced in the ezetimibe group ( $p=0.010$ ). Increased serum cholesterol at 4 months was associated with elevated intraprostatic DHEA, testosterone and androstenedione ( $p=0.043$ ,  $p=0.074$ ,  $p=0.031$ , respectively). However, cholesterol reduction did not significantly affect adenocarcinoma development at 2, 3 or 4 months of age (0%, 78%, 100% in ezetimibe-treated vs. 0%, 80%, 100% in mice not receiving ezetimibe).

**Conclusions**—Though serum cholesterol reduction did not significantly affect the rate of adenocarcinoma development in the PTEN-null transgenic mouse model of prostate cancer, it lowered intraprostatic androgens and slowed tumor growth. These findings support a role for serum cholesterol in promoting prostate cancer growth, potentially via enhanced tumor androgen signaling, and may provide new insight into cholesterol-lowering interventions for prostate cancer treatment.

### Keywords

androgen; cholesterol; ezetimibe; obesity; prostate cancer; PTEN; transgenic; Western diet

### Introduction

Obesity is associated with increased risk of aggressive prostate cancer and elevated prostate cancer-specific mortality.<sup>1</sup> Currently, it is estimated that one in five US adults have uncontrolled hypercholesterolemia, a metabolic disorder associated with obesity.<sup>2</sup> While some epidemiologic evidence supports an association between hypercholesterolemia and increased incidence of aggressive prostate cancer,<sup>3–6</sup> a recent meta-analysis found no significant association between serum cholesterol and either overall or high-grade disease.<sup>7</sup> Several studies reported positive associations between hypercholesterolemia and increased risk of prostate cancer recurrence<sup>8,9</sup> and mortality,<sup>10</sup> yet others found no associations or even inverse relationships.<sup>11,12</sup> Statins, a group of widely-prescribed cholesterol-lowering drugs, are associated with lower risk of aggressive prostate cancer,<sup>13</sup> decreased prostate cancer recurrence<sup>14</sup> and reduced mortality.<sup>15</sup> However, it is not clear whether this effect is due to direct effects of the statin itself, or indirect effects mediated via cholesterol-lowering.<sup>16</sup> As such, the true biological potential of targeting serum cholesterol to slow prostate cancer growth and progression is promising, but unclear.

Cholesterol is the precursor for *de novo* steroidogenesis, which generates androgens crucial for prostate cancer growth.<sup>17</sup> Indeed, serum cholesterol reduction has been demonstrated to lower intratumoral androgen levels and slow tumor growth in a xenograft mouse model of human prostate cancer.<sup>18,19</sup> However, the effect of cholesterol reduction on prostate cancer progression has never been tested in a transgenic model, which enables assessment of tumor progression within the native prostate microenvironment. The objective of this study was to

determine the effect of modifying serum cholesterol levels on tumor development and growth in an obese transgenic mouse model of prostate cancer. Given that PTEN is among the most frequently mutated/deleted genes in human prostate cancer,<sup>20</sup> we selected the PTEN-null mouse model for this study. We hypothesized that reduction of serum cholesterol levels would lower tumor androgens and slow tumor growth.

## Materials and Methods

### Animal study design

All animal protocols were approved by Duke University Institutional Animal Care and Use Committee. Prostate-specific homozygous deletion of PTEN was achieved by crossing PTEN<sup>loxP/loxP</sup> mice with mice of the ARR2Probasin-*cre* transgenic line PB-Cre4, where Cre recombinase is under the control of a modified rat prostate-specific probasin promoter, as previously reported.<sup>20</sup> Tumor progression is well characterized in this mouse model, with development of prostatic hyperplasia by 4 weeks of age, mouse prostate intraepithelial neoplasia (mPIN) by 6 weeks of age, and invasive prostate adenocarcinoma by 9 weeks of age.<sup>20</sup> Breeding pairs were obtained from the National Institutes of Health Mutant Mouse Resource and Research Center (NIH MMRRCC) on a C57BL/6 genetic background and PTEN<sup>loxP/loxP</sup>-Cre<sup>+</sup> (PTEN-null) mice were bred in-house. Diets were prepared by Research Diets Inc. (New Brunswick, NJ), and sterilized by irradiation. At approximately 1 month of age (mean 31.5 days, standard deviation (SD) 6.5 days), 92 male PTEN-null mice were randomized based on body weight to receive one of two diets. 1) *ad libitum* high-fat high-cholesterol (HFHC, n=45; 40 kcal% fat, 43 kcal% carbohydrate, 17 kcal% protein, 1.25% cholesterol) or 2) *ad libitum* HFHC diet with ezetimibe, a cholesterol uptake inhibitor, to achieve a target dose of 30 mg/kg (mouse weight)/day<sup>18</sup> (ezetimibe, n=47; Supplementary Table S1). All mice were group-housed, and body mass and average food consumption were measured biweekly for the study duration. Mice were euthanized using a lethal dose of ketamine and xylazine followed by bilateral thoracotomy at two (n=12 per diet group), three (n=10 per diet group) and four months of age (HFHC, n=23 and ezetimibe, n=25). Sample size was determined based on prior studies of serum cholesterol interventions in mouse models.<sup>18,19</sup> Blood was obtained via cardiac puncture immediately following euthanasia, allowed to clot at room temperature for 30 minutes, and centrifuged at 13,000 rpm for 90 seconds. Serum was collected and stored at -80°C for analyses. The entire genitourinary (GU) tract was removed intact from PTEN mice. Seminal vesicles, bladder and fat were removed, and the prostate was weighed and bisected along the sagittal plane. One half of the prostate was flash frozen in liquid nitrogen and stored at -80°C, while the other was fixed in 10% formalin for 48 hours and then paraffin embedded. The formalin-fixed prostate was oriented within the paraffin block to ensure representation of all prostate lobes (i.e., dorsal, ventral and anterior) on the resulting slides.

### Histologic analyses

Formalin-fixed paraffin-embedded prostate tissue was cut to generate three 4 µm sections, each separated by 50 µm, and stained with hematoxylin and eosin (H&E) for histopathologic evaluation. Slides were scanned using an Aperio ScanScope and grading of H&Es was conducted by a single investigator (EHA) blinded to dietary group, under the guidance of a

board-certified pathologist (GVT). All prostate lobes were graded across all three sections, and lesions (mPIN, invasive and intracystic adenocarcinoma) were noted as present vs. absent. Intracystic lesions were found only in the anterior lobe, while mPIN and invasive adenocarcinoma were found in all lobes.

Serial 4  $\mu\text{m}$  sections were cut and stained with antibodies against Ki67 (Thermo Scientific, Rockford, IL) and TUNEL (ApopTag® Plus Peroxidase *In Situ* Apoptosis Kit; Millipore Inc., Billerica, MA) to assess proliferation and apoptosis, respectively, in regions of invasive adenocarcinoma across all prostate lobes. These analyses were restricted to mice 4 months of age as there was a relatively large tumor area available for assessment at this time point. Ki67 and TUNEL H score was quantified within epithelium and stroma separately using a digital pathology nuclear algorithm (Definiens Tissue Studio®) at the Translational Pathology Core, University of North Carolina at Chapel Hill. In order to assess these markers in invasive adenocarcinoma regions only, areas of normal prostate tissue were manually excluded from analysis, and areas of necrosis and cellular debris (including intracystic lesions, where present) were excluded using the digital algorithm. As such, in mice with intracystic lesions, invasive adenocarcinoma in the area surrounding the intracystic lesion in the anterior lobe, along with invasive adenocarcinoma in ventral and dorsal lobes, was analyzed for Ki67 and TUNEL staining.

### Serum and prostate analyses

All serum parameters were measured at 4 months of age. To assess liver health, we measured serum levels of total bilirubin, alanine transaminase (ALT) and aspartate transaminase (AST) using ELISA (Sigma Aldrich, St. Louis, MO). Serum cholesterol levels were measured using the Infinity Cholesterol Liquid Stable Reagent (Thermo Electron Corp., Waltham, MA) and serum testosterone levels were measured by ELISA (R&D systems, Minneapolis, MN). Androgen concentrations were measured in flash frozen prostate tissue from 4 month old mice using mass spectrometry, as previously described.<sup>21</sup>

### Statistical analyses

Differences in body and prostate weights, serum cholesterol levels and tumor proliferative and apoptotic indexes between dietary groups were examined using Student's t tests, ensuring that variance was similar between groups being compared. Linear regression was used to examine the relationship between serum cholesterol levels and body and prostate weight, tumor proliferative and apoptotic indexes, and serum and prostate androgen levels. Statistical analysis was carried out using STATA 13.0 (Stata, Corp., College Station, TX, USA). Statistical significance was two-sided with  $p < 0.05$ .

## Results

### Effect of serum cholesterol reduction on caloric intake and body weight

Mean (SD) age at randomization was 31 (6) days for the HFHC group and 33 (10) days for the Ezetimibe group ( $p=0.494$ ). Caloric intake did not differ between dietary groups (Figure 1A), and there were no differences in body weights between dietary groups at randomization (HFHC vs. ezetimibe; 17.3 g vs. 17.6 g,  $p=0.800$ ) or at 4 month sacrifice (HFHC; 36.6 g vs.

ezetimibe; 36.2 g,  $p=0.767$ ; Figure 1B, C). Mice in the ezetimibe group consumed an average of 15.2 kcal per day, corresponding to an average ezetimibe dose of 26.2 mg/kg/day. Inhibition of cholesterol uptake with ezetimibe resulted in significantly reduced serum cholesterol levels by 4 months of age (ezetimibe vs. HFHC; 161 mg/dl vs. 201 mg/dl, respectively;  $p=0.031$ ; Figure 1C). Serum cholesterol level was not significantly correlated with body weight at sacrifice (Figure 1D). There were no differences between dietary groups with respect to liver and spleen size (all  $p>0.1$ ; Supplementary Figure S1) or liver function (all  $p>0.1$ ; Supplementary Figure S2).

### **Effect of serum cholesterol reduction on prostate weight and tumor progression**

Prostate weight was slightly, but not significantly, reduced in the ezetimibe group (0.39g vs. 0.45g;  $p=0.275$ ; Figure 2A). However, as a continuous variable, higher serum cholesterol was significantly positively correlated with larger prostate size ( $p=0.033$ ; Figure 2B).

In order to examine the effect of reducing serum cholesterol levels on prostate cancer progression, we classified prostate histology as normal, mPIN, invasive adenocarcinoma or intracystic adenocarcinoma, according to current guidelines.<sup>22</sup> By 4 months of age, all mice had developed both invasive and intracystic adenocarcinoma (Table 1), regardless of dietary group. The rate of progression to invasive or intracystic adenocarcinoma did not vary significantly by dietary group (Table 1).

### **Effect of serum cholesterol on prostate tumor proliferation and apoptosis**

We used an automated digital pathology approach to quantify rates of proliferation and apoptosis in the tumor epithelium and tumor stroma separately, excluding areas of normal prostate tissue, necrosis and fluid-filled intracystic lesions (Supplementary Figures S3, S4, S5). We found that mice randomized to the ezetimibe diet had lower tumor epithelial proliferation than those randomized to HFHC at 4 months of age (Ki67 H score 19.6 vs. 25.4;  $p=0.173$ ; Figure 3), although this association was not statistically significant. There was no difference in tumor epithelial apoptosis scores between dietary groups ( $p=0.528$ ). When serum cholesterol was examined as a continuous variable, there was a positive correlation between high serum cholesterol levels and increased tumor epithelial cell proliferation at 4 months ( $p=0.069$ ), although this was not statistically significant, and a negative correlation between high serum cholesterol levels and tumor epithelial cell apoptosis ( $p=0.004$ ; Figure 3). Restricting our analysis to the tumor stroma revealed that mice consuming ezetimibe diet had significantly reduced tumor stromal proliferation ( $p=0.010$ ), although rates of tumor stromal cell apoptosis did not differ between dietary groups ( $p=0.723$ ; Supplementary Figure S6). However, serum cholesterol levels were significantly inversely correlated with tumor stromal cell apoptosis at 4 months ( $p=0.048$ ), although the positive correlation between serum cholesterol levels and stromal proliferation was not significant ( $p=0.328$ ; Supplementary Figure S6). We investigated whether serum cholesterol levels modified tumor composition by quantifying the proportion of stromal tissue within the tumor, and found no significant differences between dietary groups (data not shown).

### Effect of serum cholesterol levels on serum and prostate androgen concentrations

Levels of serum and prostate androgens did not differ between dietary groups at 4 months of age (data not shown). However, levels of prostate testosterone, DHT, DHEA and androstenedione were positively correlated with serum cholesterol levels, although these associations were not significant (Table 2). Adjusting linear regression analyses for age at dietary randomization strengthened these associations, particularly for DHEA and androstenedione ( $p=0.043$  and  $p=0.031$ , respectively). Serum testosterone levels were positively correlated with serum cholesterol levels at 4 months, and this association was strengthened after adjusting for age at dietary randomization ( $p=0.077$ ; Table 2), though it remained not significant.

### Discussion

Obesity, a common disorder affecting approximately one third of US men,<sup>23</sup> is associated with increased incidence of aggressive prostate cancer and elevated prostate cancer mortality.<sup>1</sup> While the association between obesity and prostate cancer is likely multifactorial, epidemiologic and preclinical evidence indicates a potential role for high cholesterol, an obesity-associated metabolic abnormality, in prostate cancer progression,<sup>24</sup> though not all studies have found a link between cholesterol and prostate cancer.<sup>7</sup> Using an obese PTEN-null transgenic mouse model of prostate cancer, we show that lowering serum cholesterol levels reduced tumor proliferation, increased tumor apoptosis, lowered tumor androgen concentrations and slowed prostate tumor growth. In contrast, we found that serum cholesterol reduction did not significantly affect the rate of adenocarcinoma development. Though our findings do not support a role for cholesterol lowering in slowing tumor development in the PTEN-null mouse model of prostate cancer, they do provide evidence for an effect of serum cholesterol on tumor androgen signaling and tumor growth. Future studies are needed to determine the potential role for cholesterol-lowering interventions in prostate cancer treatment.

Since the recognition of prostate cancer as an androgen-dependent disease,<sup>25</sup> targeting the androgen signaling pathway has been the mainstay of advanced prostate cancer treatment. While the disease is initially responsive to androgen-deprivation therapy, the majority of patients eventually go on to develop castration-resistant prostate cancer (CRPC), which is currently incurable. There is substantial evidence that achieving castrate levels of circulating androgens does not eliminate intraprostatic androgens, and that intratumoral *de novo* androgen synthesis from cholesterol may be an important source of these residual tumor androgens in castrate men.<sup>26,27</sup> Indeed, statin use and lower cholesterol levels have been associated with lower levels of PSA,<sup>28,29</sup> whose gene is under the control of the androgen receptor, suggesting that cholesterol reduction may impact intraprostatic androgen signaling. Furthermore, some epidemiologic evidence supports a potential role for serum cholesterol level in response to androgen deprivation therapy. One study reported a shorter time to castrate-resistant prostate cancer development in men with elevated serum cholesterol levels at the time of androgen deprivation therapy, relative to those with normal cholesterol.<sup>30</sup> Another study demonstrated that statin use at initiation of androgen deprivation therapy delayed progression to castrate-resistant prostate cancer.<sup>31</sup> In the present study, we

demonstrate that reduction of serum cholesterol levels in a mouse model of prostate cancer decreased intratumoral androgen concentrations, adding support to epidemiologic and laboratory data that cholesterol-lowering strategies should potentially be explored alongside androgen-deprivation therapy in prostate cancer.

The PTEN-null mouse model mimics the clinical course of human prostate cancer, in addition to recapitulating histologic and molecular features of human disease.<sup>20</sup> PTEN loss is a genetic aberration frequently found in primary and metastatic human prostate cancer, and its loss is associated with poor prognosis.<sup>32</sup> Therefore, identifying factors that could improve outcomes in PTEN-null prostate cancer is of great importance. Though PTEN-null tumors in this mouse model regress following castration, they can also grow in the absence of androgen, enabling the study of both androgen-dependent and androgen-independent effects of serum cholesterol on prostate cancer development and growth.<sup>20</sup> Furthermore, one study found that PTEN deletion and subsequent activation of phosphoinositide-3-kinase (PI3K) signaling in prostate cancer cell lines caused accumulation of cholesterol from the surrounding environment that, in turn, increased the proliferative and invasive capacity of these cells.<sup>33</sup> As such, our findings combined with those from prior studies may support a role for cholesterol in PTEN-null prostate cancer, and suggest that human studies should examine the cholesterol-prostate cancer link within the context of PTEN-defined tumor subtypes.

This study should be considered in light of its limitations. Although statins are the most commonly prescribed cholesterol-lowering drugs in the clinic, they do not reduce serum cholesterol levels in mice.<sup>34</sup> As such, we achieved cholesterol reduction in our mouse model using the FDA-approved drug, ezetimibe, usually prescribed to human patients in conjunction with a statin or as a substitute in patients that cannot tolerate a statin. However, given the hepato-selectivity and low systemic bioavailability of statins, it may be that their effects on the prostate are predominantly mediated indirectly via reduction of systemic cholesterol levels.<sup>35</sup> Furthermore, the use of ezetimibe in the present study enabled examination of the effect of cholesterol reduction on prostate cancer progression in the absence of changes to dietary composition and/or obesity status, both of which have been implicated in prostate cancer.<sup>1,36</sup> Future studies should explore the effect of statin use and serum cholesterol reduction on intratumoral androgen signaling in humans. Finally, regarding our tumor growth measurements, we could not assess the contribution of fluid-filled intracystic lesions to tumor weight, and this may have biased our results. However, our finding that lowering serum cholesterol slowed tumor growth is also supported by our observation of decreased tumor cell proliferation and increased tumor cell apoptosis in mice with lower cholesterol levels, as determined by IHC assays. These limitations are balanced by an important strength of this study. Loss of the tumor suppressor, PTEN, is one of the most common genetic alterations in prostate cancer,<sup>20</sup> making this a relevant mouse model with which to study this disease. In addition, the use of a transgenic mouse model enabled assessment of the effect of cholesterol reduction on prostate cancer progression within the native microenvironment, known to play a role in disease progression.<sup>37</sup>

Cardiovascular disease and cancer are leading causes of mortality in Western society,<sup>38</sup> and prostate cancer is the second most common cause of male cancer deaths in the US.<sup>39</sup>

Therefore, understanding the role of hypercholesterolemia as a shared risk factor for these diseases has great public health importance. Furthermore, high cholesterol is a readily modifiable risk factor through the use of pharmaceutical agents and/or lifestyle modifications. Notably, we demonstrate that cholesterol reduction affects prostate cancer growth even within the context of diet-induced obesity, a known prostate cancer promoter. Together with epidemiologic evidence suggesting a potential role for hypercholesterolemia in promoting prostate cancer progression,<sup>8,10</sup> and for statins in preventing aggressive prostate cancer incidence and progression,<sup>13–15</sup> these results support further studies exploring a role for cholesterol-lowering interventions in prostate cancer treatment.

## Supplementary Material

Refer to Web version on PubMed Central for supplementary material.

## Acknowledgments

**Financial support:** EHA: American Institute for Cancer Research; SJF: NIH Grant 1-R01-CA131235-01A1 and NIH 1K24CA160653

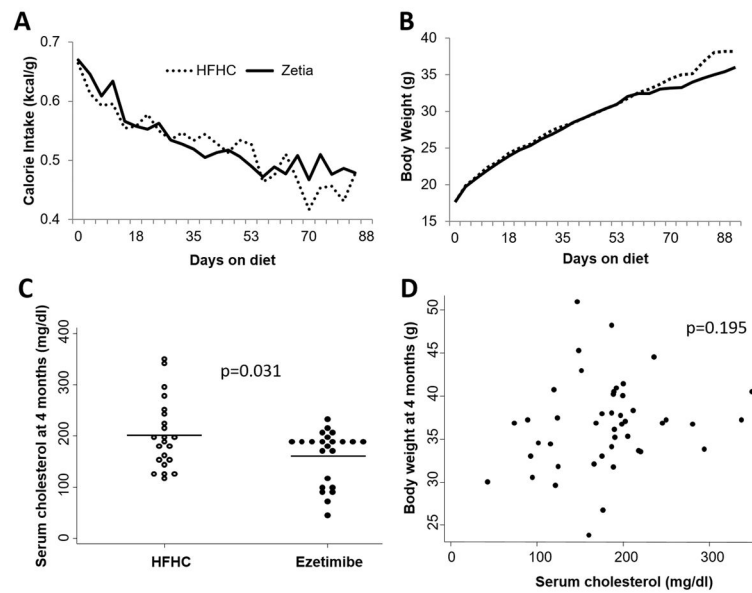
## References

1. Allott EH, Masko EM, Freedland SJ. Obesity and prostate cancer: weighing the evidence. *European urology*. 2013; 63(5):800–809. [PubMed: 23219374]
2. Fryar CD, Chen TC, Li X. Prevalence of uncontrolled risk factors for cardiovascular disease: United States, 1999–2010. *NCHS data brief*. 2012; (103):1–8.
3. Platz EA, Till C, Goodman PJ, Parnes HL, Figg WD, Albanes D, et al. Men with low serum cholesterol have a lower risk of high-grade prostate cancer in the placebo arm of the prostate cancer prevention trial. *Cancer Epidemiol Biomarkers Prev*. 2009; 18(11):2807–2813. [PubMed: 19887582]
4. Mondul AM, Weinstein SJ, Virtamo J, Albanes D. Serum total and HDL cholesterol and risk of prostate cancer. *Cancer causes & control : CCC*. 2011; 22(11):1545–1552. [PubMed: 21915616]
5. Shafique K, McLoone P, Qureshi K, Leung H, Hart C, Morrison DS. Cholesterol and the risk of grade-specific prostate cancer incidence: evidence from two large prospective cohort studies with up to 37 years' follow up. *BMC cancer*. 2012; 12:25. [PubMed: 22260413]
6. Farwell WR, D'Avolio LW, Scranton RE, Lawler EV, Gaziano JM. Statins and prostate cancer diagnosis and grade in a veterans population. *Journal of the National Cancer Institute*. 2011; 103(11):885–892. [PubMed: 21498780]
7. YuPeng L, YuXue Z, PengFei L, Cheng C, YaShuang Z, DaPeng L, et al. Cholesterol Levels in Blood and the Risk of Prostate Cancer: A Meta-analysis of 14 Prospective Studies. *Cancer Epidemiol Biomarkers Prev*. 2015
8. Allott EH, Howard LE, Cooperberg MR, Kane CJ, Aronson WJ, Terris MK, et al. Serum Lipid Profile and Risk of Prostate Cancer Recurrence: Results from the SEARCH Database. *Cancer Epidemiol Biomarkers Prev*. 2014; 23(11):2349–2356. [PubMed: 25304929]
9. Gutt R, Tonlaar N, Kunnavakkam R, Karrison T, Weichselbaum RR, Liauw SL. Statin use and risk of prostate cancer recurrence in men treated with radiation therapy. *J Clin Oncol*. 2010; 28(16): 2653–2659. [PubMed: 20421534]
10. Batty GD, Kivimaki M, Clarke R, Davey Smith G, Shipley MJ. Modifiable risk factors for prostate cancer mortality in London: forty years of follow-up in the Whitehall study. *Cancer causes & control : CCC*. 2011; 22(2):311–318. [PubMed: 21116843]
11. Ohno Y, Ohori M, Nakashima J, Okubo H, Satake N, Hashimoto T, et al. Association between preoperative serum total cholesterol level and biochemical recurrence in prostate cancer patients



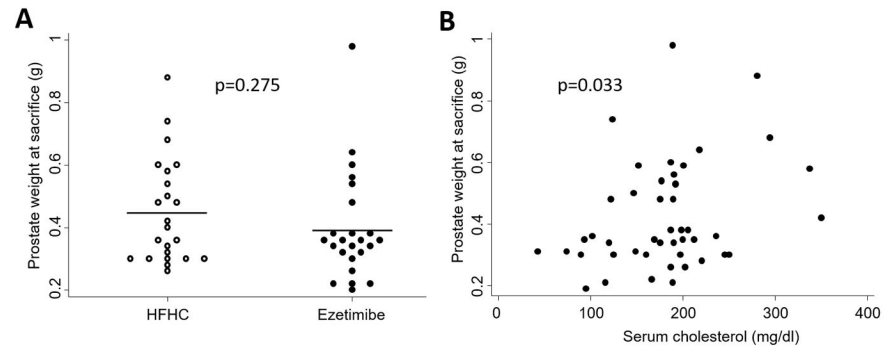
- who underwent radical prostatectomy. *Mol Clin Oncol*. 2016; 4(6):1073–1077. [PubMed: 27284447]
12. Wettstein MS, Saba K, Umbehr MH, Murtola TJ, Fankhauser CD, Adank JP, et al. Prognostic Role of Preoperative Serum Lipid Levels in Patients Undergoing Radical Prostatectomy for Clinically Localized Prostate Cancer. *The Prostate*. 2017; 77(5):549–556. [PubMed: 28093792]
  13. Bansal D, Undela K, D’Cruz S, Schifano F. Statin use and risk of prostate cancer: a meta-analysis of observational studies. *PloS one*. 2012; 7(10):e46691. [PubMed: 23049713]
  14. Allott EH, Howard LE, Cooperberg MR, Kane CJ, Aronson WJ, Terris MK, et al. Postoperative statin use and risk of biochemical recurrence following radical prostatectomy: results from the Shared Equal Access Regional Cancer Hospital (SEARCH) database. *BJU international*. 2014
  15. Yu O, Eberg M, Benayoun S, Aprikian A, Batist G, Suissa S, et al. Use of statins and the risk of death in patients with prostate cancer. *J Clin Oncol*. 2014; 32(1):5–11. [PubMed: 24190110]
  16. Alfaqih MA, Allott EH, Hamilton RJ, Freeman MR, Freedland SJ. The current evidence on statin use and prostate cancer prevention: are we there yet? *Nature reviews Urology*. 2017; 14(2):107–119. [PubMed: 27779230]
  17. Krycer JR, Brown AJ. Cholesterol accumulation in prostate cancer: a classic observation from a modern perspective. *Biochimica et biophysica acta*. 2013; 1835(2):219–229. [PubMed: 23357067]
  18. Mostaghel EA, Solomon KR, Pelton K, Freeman MR, Montgomery RB. Impact of circulating cholesterol levels on growth and intratumoral androgen concentration of prostate tumors. *PloS one*. 2012; 7(1):e30062. [PubMed: 22279565]
  19. Solomon KR, Pelton K, Boucher K, Joo J, Tully C, Zurakowski D, et al. Ezetimibe is an inhibitor of tumor angiogenesis. *Am J Pathol*. 2009; 174(3):1017–1026. [PubMed: 19179610]
  20. Wang S, Gao J, Lei Q, Rozengurt N, Pritchard C, Jiao J, et al. Prostate-specific deletion of the murine Pten tumor suppressor gene leads to metastatic prostate cancer. *Cancer cell*. 2003; 4(3):209–221. [PubMed: 14522255]
  21. Page ST, Kalthorn TF, Bremner WJ, Anawalt BD, Matsumoto AM, Amory JK. Intratesticular androgens and spermatogenesis during severe gonadotropin suppression induced by male hormonal contraceptive treatment. *Journal of andrology*. 2007; 28(5):734–741. [PubMed: 17494097]
  22. Ittmann M, Huang J, Radaelli E, Martin P, Signoretti S, Sullivan R, et al. Animal models of human prostate cancer: the consensus report of the New York meeting of the Mouse Models of Human Cancers Consortium Prostate Pathology Committee. *Cancer Res*. 2013; 73(9):2718–2736. [PubMed: 23610450]
  23. Flegal KM, Carroll MD, Kit BK, Ogden CL. Prevalence of obesity and trends in the distribution of body mass index among US adults, 1999–2010. *JAMA*. 2012; 307(5):491–497. [PubMed: 22253363]
  24. Masko EM, Allott EH, Freedland SJ. The relationship between nutrition and prostate cancer: is more always better? *European urology*. 2013; 63(5):810–820. [PubMed: 23219353]
  25. Huggins C, Hodges CV. Studies on prostatic cancer. I. The effect of castration, of estrogen and androgen injection on serum phosphatases in metastatic carcinoma of the prostate. *CA: a cancer journal for clinicians*. 1972; 22(4):232–240. [PubMed: 4625049]
  26. Mostaghel EA, Plymate SR, Montgomery B. Molecular pathways: targeting resistance in the androgen receptor for therapeutic benefit. *Clin Cancer Res*. 2014; 20(4):791–798. [PubMed: 24305618]
  27. Locke JA, Guns ES, Lubik AA, Adomat HH, Hendy SC, Wood CA, et al. Androgen levels increase by intratumoral de novo steroidogenesis during progression of castration-resistant prostate cancer. *Cancer Res*. 2008; 68(15):6407–6415. [PubMed: 18676866]
  28. Hamilton RJ, Goldberg KC, Platz EA, Freedland SJ. The influence of statin medications on prostate-specific antigen levels. *Journal of the National Cancer Institute*. 2008; 100(21):1511–1518. [PubMed: 18957682]
  29. Zapata D, Howard LE, Allott EH, Hamilton RJ, Goldberg K, Freedland SJ. Is PSA related to serum cholesterol and does the relationship differ between black and white men? *The Prostate*. 2015; 75(16):1877–1885. [PubMed: 26332663]

30. Jeon JC, Park J, Park S, Moon KH, Cheon SH, Park S. Hypercholesterolemia Is Associated with a Shorter Time to Castration-Resistant Prostate Cancer in Patients Who Have Undergone Androgen Deprivation Therapy. *World J Mens Health*. 2016; 34(1):28–33. [PubMed: 27169126]
31. Harshman LC, Wang X, Nakabayashi M, Xie W, Valenca L, Werner L, et al. Statin Use at the Time of Initiation of Androgen Deprivation Therapy and Time to Progression in Patients With Hormone-Sensitive Prostate Cancer. *JAMA Oncol*. 2015; 1(4):495–504. [PubMed: 26181260]
32. Ahearn TU, Pettersson A, Ebot EM, Gerke T, Graff RE, Morais CL, et al. A Prospective Investigation of PTEN Loss and ERG Expression in Lethal Prostate Cancer. *Journal of the National Cancer Institute*. 2016; 108(2)
33. Yue S, Li J, Lee SY, Lee HJ, Shao T, Song B, et al. Cholesteryl ester accumulation induced by PTEN loss and PI3K/AKT activation underlies human prostate cancer aggressiveness. *Cell metabolism*. 2014; 19(3):393–406. [PubMed: 24606897]
34. Pelton K, Freeman MR, Solomon KR. Cholesterol and prostate cancer. *Current opinion in pharmacology*. 2012
35. Sirtori CR. Tissue selectivity of hydroxymethylglutaryl coenzyme A (HMG CoA) reductase inhibitors. *Pharmacology & therapeutics*. 1993; 60(3):431–459. [PubMed: 8073070]
36. Masko EM, Allott EH, Freedland SJ. The Relationship Between Nutrition and Prostate Cancer: Is More Always Better? *European urology*. 2012
37. Nieto CM, Rider LC, Cramer SD. Influence of stromal-epithelial interactions on androgen action. *Endocrine-related cancer*. 2014; 21(4):T147–160. [PubMed: 24872510]
38. His M, Zelek L, Deschasaux M, Pouchieu C, Kesse-Guyot E, Hercberg S, et al. Prospective associations between serum biomarkers of lipid metabolism and overall, breast and prostate cancer risk. *European journal of epidemiology*. 2014
39. Siegel RL, Miller KD, Jemal A. Cancer Statistics, 2017. *CA: a cancer journal for clinicians*. 2017; 67(1):7–30. [PubMed: 28055103]

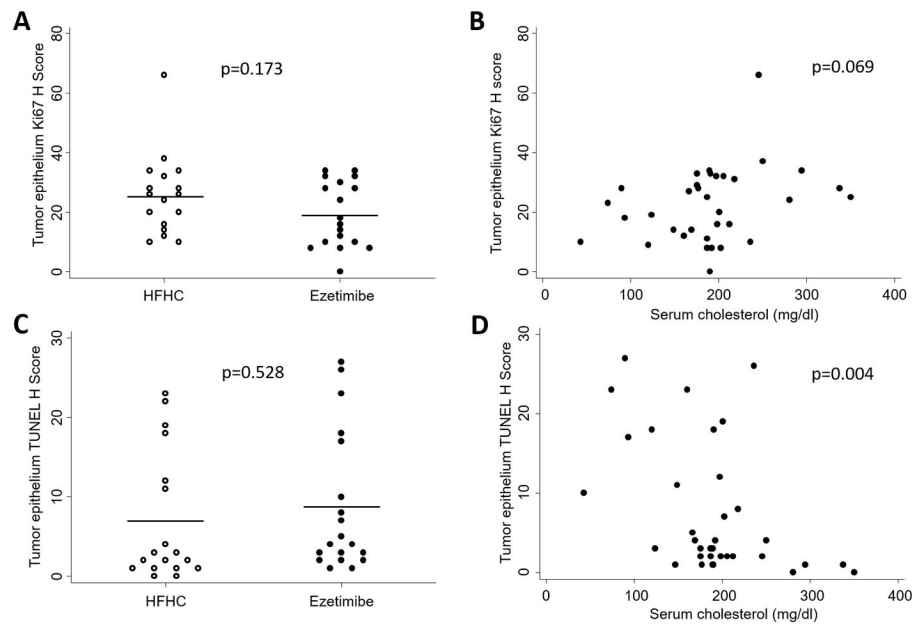


**Figure 1.**

Caloric intake (A) and body weight (B) trajectories throughout the study duration in the PTEN-null transgenic mouse model of prostate cancer, median differences in serum cholesterol level between dietary groups at 4 months of age (C), and correlation between body weight at 4 months of age and serum cholesterol levels (D).



**Figure 2.** Effect of serum cholesterol reduction on prostate weight at 4 months of age in the PTEN-null transgenic mouse model



**Figure 3.**  
Effect of cholesterol reduction on proliferation and apoptosis in prostate tumor epithelium at 4 months of age in the PTEN-null transgenic mouse model

Author Manuscript

Author Manuscript

Author Manuscript

Author Manuscript

Effect of lowering serum cholesterol levels on prostate tumor progression in the PTEN-null transgenic mouse model

**Table 1**

	2 months of age		3 months of age		4 months of age	
	Invasive adeno- carcinoma, n (%)	Intracystic adeno- carcinoma, n (%)	Invasive adeno- carcinoma, n (%)	Intracystic adeno- carcinoma, n (%)	Invasive adeno- carcinoma, n (%)	Intracystic adeno- carcinoma, n (%)
<b>HFHC</b>	0 (0)	1 (14)	7 (78)	4 (44)	23 (100)	23 (100)
<b>Ezetimibe</b>	0 (0)	0 (0)	8 (80)	3 (30)	25 (100)	25 (100)

**Table 2**

Correlation between serum cholesterol levels and serum and prostate androgens at 4 months of age in the PTEN-null transgenic mouse model

	$\beta$ coefficient (95% CI)*	<i>p</i> value*	$\beta$ coefficient (95% CI)**	<i>p</i> value**
<i>Serum levels</i>				
Testosterone	0.017 (−0.022, 0.057)	0.358	0.036 (−0.005, 0.076)	0.077
<i>Prostate levels</i>				
Testosterone	0.020 (−0.010, 0.050)	0.169	0.027 (−0.003, 0.058)	0.074
DHT	0.007 (−0.014, 0.029)	0.447	0.013 (−0.007, 0.033)	0.179
DHEA	0.003 (−0.001, 0.007)	0.165	0.004 (0.000, 0.008)	0.043
Androstendione	0.001 (−0.0002, 0.003)	0.095	0.002 (0.0002, 0.0034)	0.031

DHEA; dehydroepiandrosterone, DHT; dihydrotestosterone

P values obtained by linear regression

\* unadjusted

\*\* adjusted for age at dietary randomization