

## ASSOCIATION STUDIES ARTICLE

# Tripolar chromosome segregation drives the association between maternal genotype at variants spanning *PLK4* and aneuploidy in human preimplantation embryos

Rajiv C. McCoy<sup>1,2,\*</sup>, Louise J. Newnham<sup>3,†</sup>, Christian S. Ottolini<sup>4</sup>, Eva R. Hoffmann<sup>3,5</sup>, Katerina Chatzimeletiou<sup>6</sup>, Omar E. Cornejo<sup>7</sup>, Qiansheng Zhan<sup>8</sup>, Nikica Zaninovic<sup>8</sup>, Zev Rosenwaks<sup>8</sup>, Dmitri A. Petrov<sup>9</sup>, Zachary P. Demko<sup>10</sup>, Styrmir Sigurjonsson<sup>10</sup> and Alan H. Handyside<sup>4</sup>

<sup>1</sup>Department of Ecology and Evolutionary Biology, Princeton University, Princeton, NJ 08544, USA, <sup>2</sup>Department of Genome Sciences, University of Washington, Seattle, WA 98195, USA, <sup>3</sup>Genome Damage and Stability Centre, University of Sussex, Brighton BN1 9RQ, UK, <sup>4</sup>School of Biosciences, University of Kent, Canterbury CT2 7NJ, UK, <sup>5</sup>Department of Cellular and Molecular Medicine, DNRF Center for Chromosome Stability, University of Copenhagen, 2200 Copenhagen N, Denmark, <sup>6</sup>Section of Reproductive Medicine, First Department of Obstetrics & Gynaecology, Aristotle University Medical School, Papageorgiou General Hospital, Thessaloniki 56403, Greece, <sup>7</sup>School of Biological Sciences, Washington State University, Pullman, WA 99164, USA, <sup>8</sup>Ronald O. Perelman and Claudia Cohen Center for Reproductive Medicine, Weill Cornell Medicine, New York, NY 10065, USA, <sup>9</sup>Department of Biology, Stanford University, Stanford, CA 94305, USA and <sup>10</sup>Natera, Inc., San Carlos, CA 94070, USA

\*To whom correspondence should be addressed at: Department of Ecology and Evolutionary Biology, Princeton University, 106A Guyot Hall, Princeton, NJ 08544, USA. Tel: +1 6092589383; Fax: +1 6092581712; Email: rajiv.mccoy@princeton.edu

## Abstract

Aneuploidy is prevalent in human embryos and is the leading cause of pregnancy loss. Many aneuploidies arise during oogenesis, increasing with maternal age. Superimposed on these meiotic aneuploidies are frequent errors occurring during early mitotic divisions, contributing to widespread chromosomal mosaicism. Here we reanalyzed a published dataset comprising preimplantation genetic testing for aneuploidy in 24 653 blastomere biopsies from day-3 cleavage-stage embryos, as well as 17 051 trophoblast biopsies from day-5 blastocysts. We focused on complex abnormalities that affected multiple chromosomes simultaneously, seeking insights into their formation. In addition to well-described patterns such as triploidy and haploidy, we identified 4.7% of blastomeres possessing characteristic hypodiploid karyotypes. We inferred this signature to have arisen from tripolar chromosome segregation in normally fertilized diploid zygotes or their descendant diploid cells. This could occur via segregation on a tripolar mitotic spindle or by rapid sequential bipolar mitoses without an intervening

<sup>†</sup>These authors contributed equally to this work.

Received: February 9, 2018. Revised: April 3, 2018. Accepted: April 18, 2018

© The Author(s) 2018. Published by Oxford University Press. All rights reserved.

For permissions, please email: journals.permissions@oup.com

S-phase. Both models are consistent with time-lapse data from an intersecting set of 77 cleavage-stage embryos, which were enriched for the tripolar signature among embryos exhibiting abnormal cleavage. The tripolar signature was strongly associated with common maternal genetic variants spanning the centrosomal regulator *PLK4*, driving the association we previously reported with overall mitotic errors. Our findings are consistent with the known capacity of *PLK4* to induce tripolar mitosis or precocious M-phase upon dysregulation. Together, our data support tripolar chromosome segregation as a key mechanism generating complex aneuploidy in cleavage-stage embryos and implicate maternal genotype at a quantitative trait locus spanning *PLK4* as a factor influencing its occurrence.

## Introduction

Aneuploidy is common in human preimplantation embryos and increases in frequency with maternal age (1). While many aneuploidies originate in meiosis—primarily in females (oogenesis) rather than males (spermatogenesis) (2,3)—a substantial proportion arise after fertilization (postzygotic) due to errant chromosome segregation during early cleavage divisions (4). These mitotic errors produce mosaic embryos with two or more cell lineages possessing distinct chromosomal complements. Because aneuploidy is associated with negative pregnancy outcomes, many patients undergoing *in vitro* fertilization (IVF) treatment for infertility have their embryos tested by copy number analysis of all 24 chromosomes. Testing is applied to single or small numbers of biopsied cells with the aim of transferring only embryos that are euploid—an approach previously known as preimplantation genetic screening (PGS) or preimplantation genetic diagnosis for aneuploidy (PGD-A) but now termed preimplantation genetic testing for aneuploidy (PGT-A) (5,6).

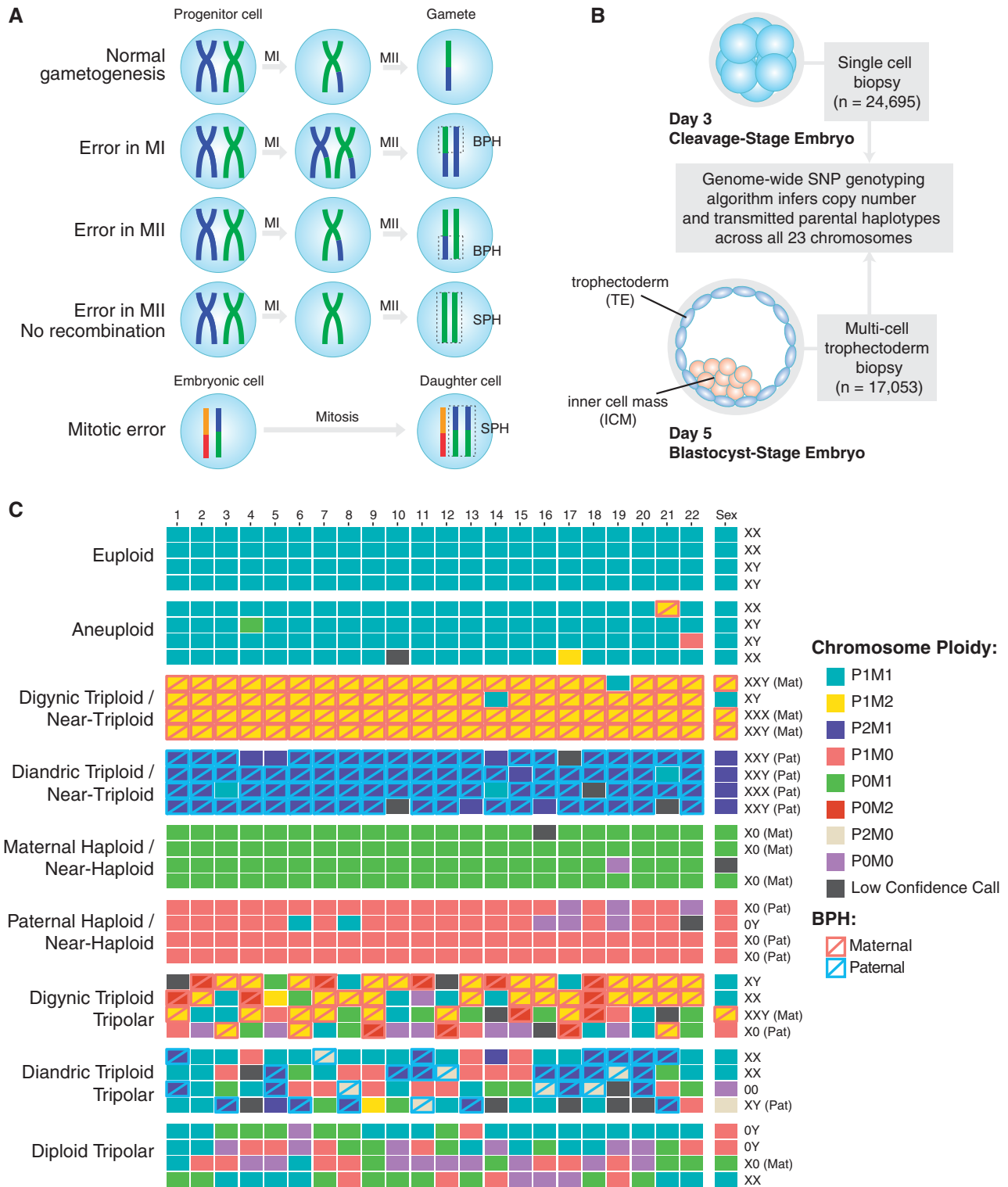
Despite substantial improvements in detecting aneuploidy at the single cell level, distinguishing aneuploidies of meiotic and mitotic origin remains challenging because the chromosomal signatures can be similar. In some cases, discrimination may be achieved by incorporating parental genotype information to determine the parental origin of each embryonic chromosome. Specifically, observation of both maternal (or, rarely, paternal) haplotypes transmitted in a homologous region of an embryonic chromosome—a signature we term ‘both parental homologs’ or ‘BPH’—provides strong evidence of the meiotic origin of a trisomy (Fig. 1A). Meanwhile, because aneuploidy is rare in sperm (1–4%) (7) and paternal BPH affects only 1% of preimplantation embryos (8), aneuploidies involving gain or loss of paternal homologs are predominantly mitotic errors. To date, several methods have been developed to infer the transmission of individual parental homologs based on single-nucleotide polymorphism (SNP) microarray data, facilitating classification of meiotic and mitotic aneuploidies. These include Parental Support (9,10) and karyomapping (11,12), which have recently been validated for linkage-based preimplantation genetic diagnosis (PGD) of single gene disorders (13,14).

These technical improvements in PGT-A methodologies have provided substantial insights into the mechanisms of aneuploidy formation. An adapted form of karyomapping, for example, recently revealed a novel mechanism of meiotic error termed ‘reverse segregation’, whereby sister chromatids separate at meiosis I, followed by (occasionally errant) segregation of non-sister chromatids at meiosis II (12). This added to premature separation of sister chromatids (PSSC) and meiotic non-disjunction as the predominant known mechanisms of meiotic error (12,15). Mitotic aneuploidies, meanwhile, have traditionally been attributed to mitotic non-disjunction, whereby chromatids fail to separate, as well as anaphase lag, whereby chromatids are lost after delayed migration toward the spindle poles (16).

A distinct class of severe mitotic aneuploidy, the origins of which have remained poorly understood, was previously referred to as ‘chaotic mosaicism’ due to its seemingly random chromosomal constitution (17). Though prevalent at the cleavage stage, chaotic mosaic embryos rarely achieve blastocyst formation (18). One hypothesized source of chaotic aneuploidy is the formation of multipolar mitotic spindles, which may cause the cell to cleave into three or more daughter cells. Recognized since the foundational work of Boveri in the late nineteenth century (19), multipolar spindles are in turn thought to form due to abnormalities of the centrosome. As the dynamic center of somatic cells, the centrosome is the key organelle coordinating microtubule organization, cell cycle progression, and chromosome segregation. Supernumerary (>2) centrosomes can lead to the formation of a multipolar rather than normal bipolar spindle (20). If proceeding through anaphase, chromosomes may then segregate among multiple daughter cells.

During gametogenesis, sperm and egg cells undergo reciprocal reductions in centrosome components (21). Upon fertilization, these complementary elements are reunited and initiate formation of the sperm aster, which then enlarges and matures to organize the first mitotic spindle (21). In humans and most other mammals (with the notable exception of rodents), the sperm is the dominant contributor of centrosome components, including the proximal centriole (22–24). Although human oocytes do not contain centrosomes or microtubule organizing centers during their meiotic divisions (25), key centrosomal proteins such as  $\gamma$ -tubulin and NuMA are recruited from the ooplasm after the switch to mitotic division (26). Given this mode of inheritance, excess centrosomes and tripolar mitosis are sometimes caused by abnormal fertilization. This includes fertilization with two sperm or retention of the second polar body, producing diandric or digynic trippronuclear (3PN) zygotes, respectively (27,28). Surprisingly, however, tripolar spindles have also been observed by laser confocal microscopy both at the cleavage and blastocyst stages in embryos derived from normally fertilized dipronuclear (2PN) zygotes (18), albeit at a lower rate than for 3PN zygotes. Indeed, tripolar mitosis [also called ‘trichotomic mitosis’ or ‘direct unequal cleavage (DUC)’] has recently been documented in a substantial proportion (17–26%) of cleaving embryos based on time-lapse imaging (29–32), even after intracytoplasmic sperm injection (ICSI) which virtually eliminates polyspermic fertilization. Rather than abnormal centrosome transmission, these observations suggest possible dysregulation of centrosome duplication.

Ottolini *et al.* (33) recently detailed the phenomenon of tripolar mitosis in diploid cells using time-lapse analysis and PGT-A of 51 normally fertilized embryos obtained from three IVF patients. In addition to multi-cell biopsies, this study included karyomapping of 74 single cells disaggregated from 13 arrested cleavage-stage embryos, as well as 9 cells extruded from a total of 26 developing embryos around the time of blastocyst formation (33). PGT-A data revealed extensive evidence of chaotic



**Figure 1.** Patterns of chromosome abnormalities observed in the preimplantation human embryos. (A) Schematic describing the signature of meiotic chromosome gain, adapted from Rabinowitz *et al.* (10) and McCoy *et al.* (8). The detection of non-identical homologous chromosomes inherited from a single parent (a signature that we term 'both parental homologs' or 'BPH') indicates a meiosis I (MI) or meiosis II (MII) error. Chromosome gains that involve identical chromosomes from a single parent (termed 'single parental homolog' or 'SPH') can occur either due to mitotic errors or MII errors in the absence of recombination. (B) Schematic cross-section showing the sample sizes of cleavage and blastocyst-stage embryo biopsies which underwent genome-wide PGS. Both parents were also genotyped using the same SNP microarray platform to facilitate inference of chromosome copy number and determine the parental origin of each chromosome. This approach also enables classification of trisomies of meiotic origin. (C) Examples of patterns of whole-chromosome copy number variation observed in the dataset. Most samples were normal (euploid) or contained a few single-chromosome imbalances (aneuploid). However, complex abnormalities were also relatively prevalent (Table 1). Each column represents a chromosome (1–22; left to right along with the sex chromosomes at the far right). Each row represents a distinct embryo biopsy. Four representative biopsies are depicted for each category of chromosome abnormality. M, maternal; P, paternal; BPH, both parental homologs.

chromosome loss in both extruded cells and arrested embryos, consistent with frequent tripolar mitosis and compromised potential for proliferation (33). While this study was critical for elucidating the karyotypic outcomes and developmental consequences of diploid chromosome segregation on tripolar spindles, the small sample of 51 embryos from three selected patients provides limited information about the prevalence of this phenomenon or its underlying genetic basis. Such information is crucial for better understanding the low baseline rates of blastocyst formation *in vitro* (~50%), as well as patient-specific factors driving variation in these rates.

Here we leverage a large published PGT-A dataset (8,34) to gain further insight into the molecular origins of chaotic aneuploidy. These data comprise 46 439 embryo biopsies genotyped by SNP microarray with aneuploidies inferred using the Parental Support algorithm (9) (Fig. 1B). This approach provides several advantages for the study of aneuploidy. The first advantage is the resolution of the data, which include estimates of copy number across all 24 chromosomes, as well as identification of meiotic chromosome gains. Second, the large sample size facilitates detection and quantification of rare forms of chromosome abnormality. Finally, by including both cleavage- and blastocyst-stage embryos, the dataset provides valuable information about the early developmental implications of various forms of aneuploidy. Based on our analysis, we propose that tripolar chromosome segregation in normally fertilized 2PN zygotes or their descendant cells is a key mechanism contributing to chaotic aneuploidy in cleavage-stage embryos. Furthermore, we provide evidence that this mechanism drives the association we previously reported (34) between mitotic-origin aneuploidy and maternal genotype at common genetic variants spanning *PLK4*, a critical regulator of centrosome duplication.

## Results

### Mitotic-origin aneuploidy is prevalent in preimplantation human embryos

Excluding replicate and uninformative samples ( $\geq 10$  chromosomes with low-confidence or nullisomic calls) we quantified various forms of chromosomal abnormality in 41 704 embryo biopsies from a total of 6319 PGT-A cases. Maternal age, including patients and egg donors, ranged from 18 to 48 (median = 37), while paternal age ranged from 21 to 77 (median = 39). Indications for PGT-A were diverse and included advanced maternal age, recurrent pregnancy loss, sex selection, previous IVF failure, male factor infertility, unexplained infertility, previous aneuploidy and translocation carrier status (8).

The overall rate of euploidy among day-3 blastomere biopsies was 38.0% compared with 55.5% for day-5 trophoctoderm biopsies (Table 1). We note that in light of mosaicism, which is common during preimplantation development (1,4,35) inferred ploidy of the embryo biopsy may not reflect the ploidy of the rest of the embryo. Among samples with 1–2 chromosomes with abnormal copy number, a total of 2040 (8.3%) day-3 blastomere samples possessed at least one putative meiotic (BPH) chromosome gain, compared with 1619 (9.5%) day-5 trophoctoderm samples (Table 1). Conversely, a total of 1536 (6.2%) such day-3 blastomere samples and 930 (5.5%) such day-5 trophoctoderm samples possessed only putative mitotic errors (loss or SPH gain of  $\geq 1$  paternal chromosome with no co-occurring maternal or paternal BPH gains; Table 1).

**Table 1.** Incidence of aneuploidy in day-3 (d3) blastomere biopsies and day-5 (d5) trophoctoderm biopsies

Category	Day-3 blastomere biopsies				Day-5 trophoctoderm biopsies				Selection criteria	
	N samples (%)	Meiot. (%) <sup>a</sup>	Mitot. (%) <sup>b</sup>	Ambig. (%) <sup>c</sup>	N samples (%)	Meiot. (%) <sup>a</sup>	Mitot. (%) <sup>b</sup>	Ambig. (%) <sup>c</sup>		
Euploid	8188 (33.2%)				8687 (50.9%)				0.65	All 23 chromosomes biparental disomic
Euploid/NA	1173 (4.8%)				774 (4.5%)				1.05	Biparental disomic with $\geq 1$ low-confidence calls
Minor aneuploidy	7342 (29.8%)	2040 (8.3%)	1536 (6.2%)	3766 (15.3%)	5249 (30.8%)	1619 (9.5%)	930 (5.5%)	2700 (15.8%)	0.97	1–2 chromosomes with abnormal copy number
Complex abnormality	7950 (32.2%)	3251 (13.2%)	3732 (15.1%)	967 (3.9%)	2341 (13.7%)	1127 (6.6%)	788 (4.6%)	426 (2.5%)	2.35	>2 chromosomes with abnormal copy number
Total <sup>d</sup>	24 653	5291 (21.5%)	5268 (21.4%)	4733 (19.2%)	17 051	2746 (16.1%)	1718 (10.1%)	3126 (18.3%)		

d3: single blastomere biopsy from day-3 cleavage-stage embryo; d5: multiple cell trophoctoderm biopsy from day-5 blastocyst; NA: missing data, indicating a low-confidence call.

<sup>a</sup>Samples possessing a putative meiotic error, defined as one or more chromosomes displaying the BPH signature of meiotic chromosome gain (Fig. 1A; see also McCoy et al. [8]).

<sup>b</sup>Samples possessing only putative mitotic errors, defined as gain or loss of one or more paternal chromosomes with no co-occurring BPH signatures [Fig. 1A; see also McCoy et al. (8)].

<sup>c</sup>Aneuploid samples that did not meet either of the aforementioned criteria and are thus ambiguous in meiotic/mitotic origin.

<sup>d</sup>Total number of samples after 1041 replicate and 3694 uninformative samples with  $> 10$  chromosomes with low-confidence or nullisomic calls were removed.



**Table 2.** Frequencies of various forms of complex abnormality (>2 chromosomes with abnormal copy number) in day-3 (d3) blastomere biopsies and day-5 (d5) trophoctoderm biopsies

Type of complex abnormality	No. of d3 samples (%)	No. of d5 samples (%)
Diploid tripolar <sup>a</sup>	1149 (4.7%)	81 (0.5%)
Digynic triploid tripolar	94 (0.4%)	14 (0.1%)
Diandric triploid tripolar	27 (0.1%)	0 (0.0%)
Digynic triploid/near-triploid <sup>b</sup>	740 (3.0%)	321 (1.9%)
Diandric triploid/near-triploid <sup>b</sup>	25 (0.1%)	32 (0.2%)
Maternal haploid/near-haploid <sup>b</sup>	288 (1.2%)	84 (0.5%)
Paternal haploid/near-haploid <sup>b</sup>	126 (0.5%)	25 (0.1%)
Multiple maternal chromosome gains (non-triploid)	480 (1.9%)	248 (1.5%)
Multiple paternal chromosome gains (non-triploid)	61 (0.2%)	40 (0.2%)
Both maternal and paternal gains (non-triploid)	390 (1.6%)	298 (1.7%)
Multiple maternal chromosome losses (non-haploid)	360 (1.5%)	93 (0.5%)
Multiple paternal chromosome losses (non-haploid)	186 (0.8%)	24 (0.1%)
Both maternal and paternal losses (non-haploid)	448 (1.8%)	44 (0.3%)
Other <sup>c</sup>	3576	1037
<b>Total</b>	<b>7950 (32.2%)</b>	<b>2341 (13.7%)</b>

<sup>a</sup>Defined by possession  $\geq 1$  biparental disomy,  $\geq 1$  paternal monosomy,  $\geq 1$  maternal monosomy, and  $\geq 1$  nullisomy.

<sup>b</sup>Near-triploidy and near-haploidy are defined by  $\geq 20$  trisomic and monosomic chromosomes, respectively.

<sup>c</sup>Unclassified combinations of maternal and paternal chromosome gains and losses, as well as uniparental disomy.

In addition to these less severe aneuploidies, we sought to investigate the origin of complex abnormalities that affected three or more chromosomes simultaneously. These include so-called 'chaotic' aneuploidies, characterized by seemingly random chromosome complements (17). We identified a total of 10 291 samples exhibiting complex abnormalities, a subset of which could be classified into distinct categories (Fig. 1C; Table 2). The proportion of complex abnormalities was significantly greater in day-3 blastomere samples (7950 samples or 32.2%) than in day-5 trophoctoderm samples [2341 samples or 13.7%; Fisher's exact test,  $OR = 2.99$  (95% CI: 2.84–3.15),  $P < 1 \times 10^{-10}$ ].

### Evidence of frequent tripolar mitosis in cleavage-stage embryos

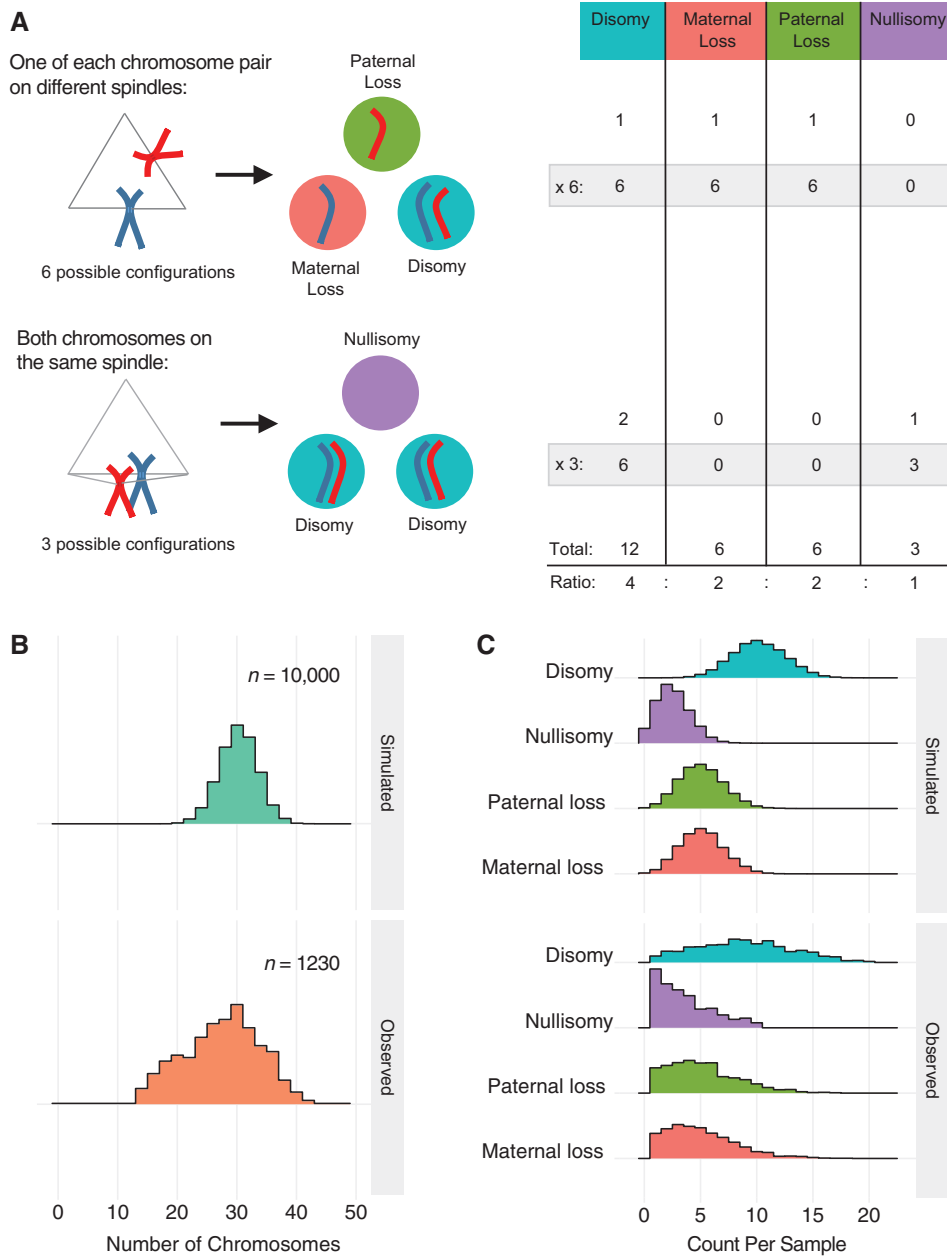
Among the different categories of complex aberrations, digynic triploid and near-triploid patterns were relatively prevalent (1061 samples or 2.5%; Table 2). Triploid zygotes are predisposed to form tripolar spindles (28), in which case the resulting embryos may be expected to be approximately or 'quasi-' diploid with chaotic chromosome complements. This follows from a model by which the triploid set of chromosomes ( $23 \times 3 = 69$ ) is replicated ( $69 \times 2 = 138$ ), then randomly segregated to three daughter cells ( $138/3 = 46$  chromosomes per cell). Samples exhibiting this pattern (see Materials and Methods) were rare in the PGT-A dataset (106 samples or 0.25%), potentially indicating that chromosome segregation in triploid cells is not generally random.

Meanwhile, random tripolar division of normally fertilized dipronuclear (2PN) zygotes would be predicted to generate hypodiploid complements in the three daughter cells ( $92/3 = \sim 31$  chromosomes per cell). Under this model, one would expect to observe a mixture of disomies, paternal monosomies, maternal monosomies and nullisomies in the ratio of 4: 2: 2: 1 (Fig. 2A). Selecting aneuploid samples with at least one disomy, paternal monosomy, maternal monosomy and nullisomy (and no co-occurring trisomy or uniparental disomy), we identified 1230 (2.9%) putative 'diploid tripolar' samples with a mean number of  $28.0 \pm 6.3$  ( $\pm SD$ ) total chromosomes (mode = 30

chromosomes; Fig. 2B). Performing 10 000 simulations, we confirmed that the observed patterns of chromosome loss were consistent with a model of tripolar segregation of the diploid chromosome set (Fig. 2C). We note that the distribution of total chromosomes exhibits modest bimodality, with a secondary peak at 20 chromosomes (Fig. 2B). This may reflect an additional round of tripolar segregation, whereby the diploid tripolar complement is replicated ( $30.67 \times 2 = 61.3$ ) then randomly divided among three daughter cells ( $61.3/3 = 20.4$  chromosomes per cell). This was similarly reflected in the observed counts of 10 885 disomies, 6398 paternal monosomies, 6225 maternal monosomies and 4451 nullisomies among the 1230 diploid tripolar samples, which exhibited a slight excess of chromosome loss compared with the predicted 4: 2: 2: 1 ratio (observed ratio = 4: 2.4: 2.3: 1.6; Fig. 2C). Nevertheless, the strong concordance between the observed and simulated data indicates that during tripolar segregation, chromosomes tend to assort randomly into each of three daughter cells rather than segregating preferentially to one or two cells. Consistent with the notion that multipolar divisions compromise development or cell proliferation, more than 90% (1149 samples) of the 1230 putative diploid tripolar samples were from day-3 blastomere biopsies, with only a small minority (81 samples) represented among the trophoctoderm biopsies.

### Maternal genotype at common variants spanning PLK4 is associated with incidence of the diploid tripolar signature in blastomere samples

We recently reported that a common ( $\sim 30\%$  global minor allele frequency) haplotype spanning PLK4, tagged by the SNP rs2305957, is associated with mitotic error in human preimplantation embryos (34). In addition to the overall association with mitotic-origin aneuploidy, we noted a particularly strong association with complex errors involving loss of both maternal and paternal homologs (34). As the diploid tripolar signature documented in our current analysis resembled this pattern, we sought to test whether the original association between mitotic aneuploidy and maternal genotype at the quantitative trait

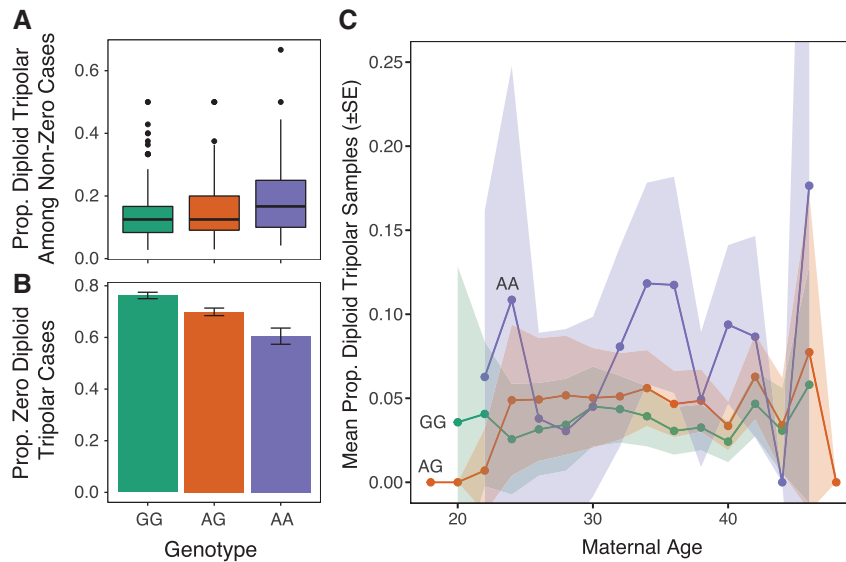


**Figure 2.** Tripolar mitosis in diploid embryos. (A) Schematic showing all possible outcomes following diploid tripolar mitosis. Only one pair of chromosomes is depicted for clarity (maternal: red; paternal: blue). Spindle attachment configurations are shown on the left with segregation outcomes in the three daughter cells shown in the middle. The table on the right provides the expected ratios of segregation outcomes for each chromosome following tripolar mitosis. (B) Density histograms showing observed chromosome counts in 1230 samples that are suspected to have undergone tripolar mitosis (see main text) compared with 10 000 samples simulated under a model of random tripolar segregation. Observed peaks at ~30 and ~20 chromosomes may reflect one and two rounds of tripolar mitosis, respectively. (C) Density histograms displaying the number of chromosomes in each biopsy displaying each of the four possible outcomes. Simulated data (10 000 simulations) are displayed in the top panel, while observed data (1230 putative diploid tripolar biopsies) are displayed in the bottom panel.

locus encompassing *PLK4* was driven by tripolar chromosome segregation in diploid cells.

Supporting our hypothesis, the per-case frequency of diploid tripolar day-3 blastomere samples was positively associated with the minor (A) allele of rs2305957 [quasi-binomial GLM: OR = 1.42 (95% CI: 1.29–1.57),  $P = 1.9 \times 10^{-12}$ ] (Fig. 3). The magnitude of this association with tripolar mitosis thus exceeds that of the original association with mitotic error [quasi-binomial GLM: OR = 1.24 (95% CI: 1.18–1.31),  $P = 6.0 \times 10^{-15}$ ], despite comprising only approximately one-fifth of all putative mitotic

aneuploidies in these samples (1149 vs. 5438). Like the originally described association (34), the effect was additive, with means of 3.5%, 4.7% and 7.5% diploid tripolar embryos per patient carrying zero, one and two copies of the risk allele, respectively (Fig. 3). The effect was also constant with maternal age [quasi-binomial GLM: OR = 0.99 (95% CI: 0.98–1.01); Fig. 3C], consistent with previous results (34). Because the distributions of diploid tripolar samples per case exhibited significant inflation of zeros (AIC-corrected Vuong test:  $Z = -6.61$ ,  $P = 1.9 \times 10^{-11}$ ), we also fit a hurdle model to the data to account separately for the zero



**Figure 3.** Tripolar mitosis in diploid embryos drives association with common maternal genetic variants spanning *PLK4*. **(A)** For cases with  $\geq 1$  diploid tripolar sample, boxplots of proportion of diploid tripolar samples stratified by maternal genotype at rs2305957. The colored boxes extend from the median to the first (Q1) and third (Q3) quartiles. Whiskers extend to  $1.5 \times$  interquartile range. Outlier data points beyond this range are plotted individually. Only cases with  $> 2$  samples are plotted for clarity. The risk allele (A allele of rs2305957) is associated with increased frequencies of biopsies exhibiting signatures of tripolar mitosis [quasi-binomial GLM: OR = 1.42 (95% CI: 1.29–1.57),  $P = 1.9 \times 10^{-12}$ ]. **(B)** Proportions of cases per genotype with zero diploid tripolar samples. Error bars indicate  $\pm$  standard errors of the mean proportions. **(C)** Mean proportions of putative diploid tripolar samples stratified by age (rounded to nearest two years) and genotype. Ribbons indicate  $\pm$  standard errors of the mean proportions.

and non-zero portions of the distribution. The hurdle model supported the association both for the zero [binomial GLM: OR = 1.41 (95% CI: 1.35–1.47),  $P < 1 \times 10^{-10}$ ] and non-zero counts [Poisson GLM: OR = 1.31 (95% CI: 1.26–1.37),  $P < 1 \times 10^{-10}$ ].

Upon excluding all putative diploid tripolar samples from the analysis, we re-tested the remaining putative mitotic errors for association with maternal genotype at rs2305957. We observed a modest, but significant association with residual mitotic aneuploidies [quasi-binomial GLM: OR = 1.12 (95% CI: 1.06–1.19),  $P = 1.6 \times 10^{-4}$ ], potentially reflecting our initially strict classification of diploid tripolar samples, which excluded co-occurring trisomies. Supporting this hypothesis, significant associations were observed upon excluding the originally defined set of diploid tripolar samples, but relaxing the criteria to include hypodiploid complements ( $< 42$  chromosomes) with co-occurring maternal trisomy [quasi-binomial GLM: OR = 1.16 (95% CI: 1.04–1.30),  $P = 9.5 \times 10^{-3}$ ] or paternal trisomy [quasi-binomial GLM: OR = 1.29 (95% CI: 1.09–1.53),  $P = 3.6 \times 10^{-3}$ ]. These results suggest that tripolar mitosis may also occur in embryos already affected by meiotic or mitotic errors or that additional aneuploidies may accumulate downstream of tripolar mitosis.

#### Analysis of time-lapse data from a subset of cases

Seeking to validate our findings, we took advantage of the fact that embryos from a subset of IVF cases included in the PGT-A dataset had previously undergone time-lapse imaging by the referring laboratory, with published data demonstrating frequent multipolar cleavages (32) (Supplementary Material, Videos S1, S2 and S3). These included 77 day-3 cleavage-stage embryos from 10 IVF cases with single blastomeres analyzed by PGT-A. We note that time-lapse observation of direct unequal cleavage (DUC) does not prove the occurrence of tripolar mitosis, as the former refers to cleavage of the cytoplasm, while the latter refers to mitotic spindle conformation and chromosome

segregation. Moreover, rapid sequential cleavages with an unusually short interval between mother and daughter cell division ( $\leq 5$  h) are also classified as DUC but may arise by distinct mechanisms and confer distinct chromosomal outcomes. We nevertheless hypothesized that DUC and tripolar segregation are related. Consistent with this hypothesis, we observed that the diploid tripolar PGT-A signature was significantly enriched among embryos documented by time lapse to have undergone one or more DUCs during the first three divisions [Fisher's exact test: OR = 6.64 (95% CI: 1.34–37.4),  $P = 0.0087$ ]. The signature was most prevalent among embryos undergoing DUC during the first division (DUC-1) or undergoing multiple DUCs (DUC-Plus; Fig. 4A), indicating that these cleavage phenotypes may confer a wider distribution of abnormal cells at the time of biopsy.

Time-lapse data were also valuable for direct validation of the association with maternal *PLK4* genotype. For this purpose, data from cases undergoing day-5 blastocyst biopsy could also be incorporated, as the availability of time-lapse data from these cases does not depend on embryo survival to the blastocyst stage. This extended the analysis to 58 IVF patients, with a total of 742 embryos having undergone time-lapse screening (32). Despite this small sample size, rs2305957 was significantly associated with DUC [quasi-binomial GLM: OR = 1.53 (95% CI: 1.01–2.31),  $P = 0.047$ ]. Directionality was consistent with expectations, as the minor (A) allele, which was previously associated with increased incidence of the diploid tripolar signature (Fig. 3) was also associated with increased incidence of DUC (Fig. 4B).

#### Discussion

Aneuploidy is the leading known cause of implantation failure, miscarriage and congenital birth defects. Recent studies have vastly improved our understanding of aneuploidy of maternal meiotic origin and its association with maternal age. Meanwhile, relatively little is known about errors of mitotic





trophectoderm samples could be confounded by the multi-cell nature of the biopsy—an important limitation of these PGT-A data. In the case of a mosaic biopsy (which is one expected outcome of tripolar segregation), PGT-A signals from karyotypically distinct cells may be averaged and obscure expected patterns. If such biopsies no longer meet the multiple chromosome loss criteria we used to distinguish diploid tripolar samples (see Materials and Methods section), their misclassification could lead us to underestimate the frequency of the tripolar signature among day-5 blastocysts. In rare cases, reciprocal gains and losses within multi-cell biopsies may average to resemble disomic signatures, as previously proposed as a potential source of false negative calls (41). Nevertheless, our interpretation of embryonic or cellular inviability is consistent with multiple previous studies demonstrating that embryos with complex aneuploidies, including those deriving from normally fertilized zygotes, tend to arrest at cleavage stages, around the time of embryonic genome activation (8,42–44). Moreover, previous studies have observed a strong enrichment of abnormal mitotic spindles among arrested cleavage-stage embryos (18), as well as demonstrating that zygotes undergoing tripolar mitosis have poor developmental potential beyond the cleavage stage (29–32). Finally, the hypothesis that tripolar segregation impairs embryonic development was recently supported by single-cell karyomapping and time-lapse imaging of 13 arrested cleavage-stage embryos, which exhibited extensive chromosome loss consistent with tripolar mitosis (33). While there is also evidence of tripolar spindle formation in confocal images of human blastocysts, it is possible that aneuploid daughter cells are eliminated by apoptosis or that the spindle configurations are transient and do not tend to result in tripolar anaphase at this stage. Potentially relevant are previous observations that unlike cleavage-stage embryos, adult somatic cells possessing extra centrosomes rarely undergo multipolar mitosis, but instead experience centrosome clustering leading to the formation of a pseudo-bipolar spindle (45). This may reflect increased stringency of mitotic checkpoints following embryonic genome activation, possibly via upregulation of MAD2 (46). While clustered centrosomes predispose the cell to aberrant microtubule-kinetochore attachments and anaphase lag (47), the resultant aneuploidies are less severe than those induced by multipolar mitosis.

We recently reported that common maternal genetic variants defining a ~600 kb haplotype of chromosome 4, tagged by SNP rs2305957, is strongly associated with complex mitotic-origin aneuploidy in day-3 cleavage-stage embryos (34). Furthermore, individuals carrying the risk allele had fewer blastocyst-stage embryos available for testing at day 5, suggesting that the complex aneuploid phenotype impairs embryonic survival. The association we observed was significant with maternal, but not paternal genotypes, reflecting the fact that prior to embryonic genome activation, mitotic divisions are controlled by maternal gene products deposited in the oocyte (34). While the associated haplotype spans seven genes (*INTU*, *SLC25A31*, *HSPA4L*, *PLK4*, *MFSB8*, *LARP1B* and *PGRMC2*), *PLK4* stands out given its well-characterized role as an essential regulator of centrosome duplication. *PLK4* is a tightly regulated kinase that initiates assembly of a daughter procentriole at the base of the existing mother centriole, thereby mediating bipolar spindle formation (48,49). Altered expression of *PLK4* is associated with centrosome amplification, generating multipolar spindles in human cell lines—a hallmark of several cancers (48–52). Moreover, recent work on bovine embryos indicates that *PLK4* may constitute a maternally contributed factor with a crucial role in oocyte

maturation and organization of the initial mitotic spindle (53). Notably, *PLK4* knockdown with interfering double-stranded RNA (dsRNA) induced mitotic spindle defects, abnormal cytokinesis and early developmental arrest (53).

Based on this knowledge, we hypothesized that the risk allele of the *PLK4*-linked QTL identified in our previous study (34) may predispose cells of cleavage-stage embryos to tripolar mitotic divisions. Such divisions would produce daughter cells possessing ~4: 2: 2: 1 ratios of disomies, paternal and maternal monosomies, and nullisomies, respectively. Consistent with this hypothesis, the diploid tripolar signature was strongly associated with maternal genotype at rs2305957—a finding that we further validated using time-lapse data from 742 embryos and corresponding genotype data from 58 patients. Together, our results support a causal role of *PLK4* in the original association.

Given the necessarily correlational nature of our analysis, we cannot formally rule out alternative and non-mutually exclusive models by which the *PLK4*-spanning QTL could impact mitotic phenotypes. Indeed, *PLK4* plays multiple roles within and apart from the centrosome cycle and its variation could thus influence cellular cleavage and/or chromosome segregation through alternative routes. For example, in *Drosophila*, *Plk4* interacts with *Cdc6*, a replication licensing factor, which both localize to centrosomes. *Cdc6* inhibits centrosome duplication during S-phase DNA replication, while *Plk4* counteracts this activity (54). If the same interaction occurs in human embryos, *PLK4* activity could theoretically influence the rate of DUC by decoupling the S- and M-phases of early embryonic divisions. Other studies of *PLK4* in model organisms point to additional roles that are independent of centrosome duplication (55–57). These include a study demonstrating that depletion of maternally contributed *Plk4* prevents microtubule nucleation and leads to the formation of monopolar mitotic spindles in acentriolar mouse embryos (57). Nevertheless, we believe that the tripolar mitosis model provides the most complete and parsimonious explanation for the data, as these alternative models are not expected to produce chromosome complements closely matching tripolar expectations (disomies, paternal monosomies, maternal monosomies and nullisomies in the ratio of 4: 2: 2: 1; Fig. 2).

Zhang et al. (58) recently replicated a key finding of our initial association study, demonstrating that rates of blastocyst formation are reduced among embryos from patients carrying the high-risk genotypes of rs2305957. Furthermore, patients diagnosed with early recurrent miscarriage (before 12 weeks of gestation) were found to possess a higher frequency of the risk allele compared with matched fertile control subjects (58). Our analysis provides evidence of the molecular mechanism underlying these results, suggesting that complex aneuploidies arising from tripolar mitosis compromise early embryonic development. Along with methodological considerations, the severity of the complex aneuploid phenotype may explain the lack of association with recurrent pregnancy losses that occur later in development and are presumably associated with less severe aneuploidies (8,59). Further research will be necessary to determine the relevance of these findings to non-IVF patient populations and *in vivo* conception.

Through detailed characterization of complex chromosome abnormalities, our analysis revealed that tripolar chromosome segregation in embryos originating from normally fertilized 2PN zygotes is an under-recognized phenomenon contributing to aneuploidy in cleavage-stage embryos. Using simulation, we showed that observed chromosomal patterns are consistent

with a model of random segregation of a replicated diploid complement to each of three daughter cells. Finally, we demonstrated that the signatures of tripolar chromosome segregation are significantly correlated with maternal genetic variants spanning the centrosomal regulator *PLK4*. This implicates maternal variation in *PLK4* as a factor influencing mitotic spindle integrity while shedding light on tripolar mitosis as a potentially important mechanism contributing to aneuploidy in preimplantation embryos. Together our results help illuminate the molecular origins of chaotic aneuploidy, a long-recognized phenomenon contributing to high rates of IVF failure.

## Materials and Methods

### Human subjects approvals

Based on the retrospective nature of the analysis and use of deidentified data, this work was determined not to constitute human subjects research by the University of Washington Human Subjects Division (affiliation of RCM at the time of analysis) as well as Ethical & Independent Review Services, who provided their determination to Natera, Inc.

### Sample preparation, genotyping and aneuploidy detection

DNA isolation, whole genome amplification and SNP genotyping are described in detail in McCoy *et al.* (8). Briefly, genetic material was obtained from IVF patients or oocyte donors and male partners by buccal swab or peripheral venipuncture. Genetic material was also obtained from single blastomere biopsies of day-3 cleavage-stage embryos or ~5–10 cell biopsies of trophectoderm tissue from day-5 blastocysts. Embryo DNA was amplified via multiple displacement amplification [MDA; see (8)]. Amplified embryo DNA and bulk parental tissue were genotyped on the HumanCytoSNP-12 BeadChip (Illumina; San Diego, CA) using the standard Infinium II protocol. Genotype calling was performed using the GenomeStudio software package (Illumina; San Diego, CA).

Aneuploidy detection was performed using the Parental Support algorithm, which leverages informative parental markers (e.g. sites where one parent is homozygous and the other parent is heterozygous) to infer transmission of maternal and paternal homologs along with the copy number of all chromosomes across the embryo genome. In doing so, the method overcomes high rates of allelic dropout that characterize data obtained from whole genome amplified DNA of embryo biopsies. The Parental Support method is described in detail in Johnson *et al.* (9), who also demonstrated its sensitivity and specificity of 97.9% and 96.1%, respectively.

### Classification criteria

Putative diploid tripolar samples were identified as those exhibiting  $\geq 1$  maternal monosomy,  $\geq 1$  paternal monosomy,  $\geq 1$  nullisomy and  $\geq 1$  biparental disomy with no co-occurring trisomies or uniparental disomies. Digynic and diandric triploid and near-triploid samples were defined as those with  $\geq 20$  maternal trisomic or paternal trisomic chromosomes, respectively. Maternal haploid and paternal haploid or near-haploid samples were similarly defined as those with  $\geq 20$  paternal monosomic or maternal monosomic chromosomes, respectively. Digynic triploid tripolar and diandric triploid tripolar samples were defined using simulation-based expectations of random

chromosome segregation of triploid cells. Specifically, digynic triploid tripolar samples were required to exhibit  $\geq 3$  disomic,  $\geq 3$  maternal trisomic, 1–8 maternal uniparental disomic and 1–8 paternal monosomic chromosomes. Diandric triploid tripolar samples were meanwhile required to exhibit  $\geq 3$  disomic,  $\geq 3$  paternal trisomic, 1–8 paternal uniparental disomic and 1–8 maternal monosomic chromosomes.

### Time-lapse imaging and annotation

Time-lapse microscope image capture, annotation and classification of tripolar mitosis (therein referred to as ‘direct unequal cleavage’ or ‘DUC’), is described in the Materials and Methods section of Zhan *et al.* (32). In short, images were automatically captured every 10 min, with seven focal planes illuminated by 635 nm LED light. Several time points were annotated, including: appearance of pronuclei, syngamy, time of division, morula, cavitation, early blastocyst, expanded blastocyst and hatching blastocyst. Only cells with visible nuclei were considered blastomeres. DUC was defined as (1) cleavage of a single blastomere into 3+ daughter blastomeres or (2) unusually short interval between mother and daughter cell division of  $\leq 5$  h, in accordance with established criteria (60,61). DUC-1 (first cleavage; Supplementary Material, Video S1), DUC-2 (second cleavage; Supplementary Material, Video S2), DUC-3 (third cleavage; Supplementary Material, Video S3) and DUC-Plus (multiple DUCs) were annotated based on the cleavage stage during which DUC was observed.

### Statistical analyses

Statistical analyses were performed using the R statistical computing environment (62), with plots generated using the ‘ggplot2’ package (63). Density plots (Fig. 2A and B) were generated using the ggjoy package (<https://cran.r-project.org/package=ggjoy>; date last accessed April 27, 2018).

Simulations of tripolar mitosis were performed in R by using the ‘sample’ function (without replacement) to distribute replicated maternal and paternal chromatids to each of three daughter cells. To implement the simulation, we set the probability of a given daughter cell inheriting a given (maternal or paternal) chromatid to 2/3, thereby capturing the condition that sister chromatids segregate to two of three daughter cells during tripolar mitosis (Fig. 2A). After repeating this procedure for all 46 chromosomes, counts of disomies, maternal and paternal monosomies, and nullisomies were tabulated, along with total chromosome count. The simulation was repeated 10 000 times to generate frequency distributions of various classes of abnormalities, to which the empirical data were compared.

To test the association between maternal genotype and incidence of embryos with the diploid tripolar PGT-A signature, we limited the analysis to the originally tested set of unrelated IVF patients or egg donors (no repeat cases; less than second degree relatedness) with genotype data meeting quality control thresholds (95% variant call rate; 95% sample genotyping efficiency). We then used a generalized linear regression model to test for association between the per-case counts of samples that did and did not exhibit the diploid tripolar pattern and maternal genotypes at rs2305957, encoded as dosage of the ‘A’ allele. To account for excess zeros, we also fit a hurdle model to the zero and non-zero portions of the distribution using the ‘pscl’ package (64). For the corresponding analysis of time-lapse phenotypes, we sought to maximize statistical power from a small

number of cases by combining rather than excluding embryo data from repeat IVF cases. To this end, we used KING (65) to infer cases derived from the same patient based on maternal genotype data. We then summed tripolar and non-tripolar embryo phenotypes for each independent patient, using the resulting data in a quasi-binomial regression, as above.

Aneuploidy data were made available with the original publication (34), posted as [Supplementary Material](#). Analysis scripts are posted on GitHub [https://github.com/rmccoy7541/tripolar\\_mitosis](https://github.com/rmccoy7541/tripolar_mitosis).

## Supplementary Material

[Supplementary Material](#) is available at HMG online.

## Acknowledgements

The authors thank Allison Ryan, Milena Banjevic, Matthew Hill and Matthew Rabinowitz for their work at Natera to develop algorithms to detect aneuploidies in PGS data. We also thank Molly Gasperini and members of the Akey and Shendure labs for helpful discussions on this project. This work was supported in part by NIH/NHGRI Genome Training Grant (5T32HG000035-22) to the Department of Genome Sciences at the University of Washington.

**Conflict of Interest statement.** D.A.P. has received stock options in Natera, Inc. as consulting fees. Z.P.D. and S.S. are employees of and hold stock or options to hold stock in Natera, Inc. RCM and DAP are co-inventors on a patent application filed by Stanford University with the U.S. Patent and Trademark Office on November 11, 2015 (US 14/938, 842). R.C.M. has received past conference travel support from Natera, Inc. E.R.H. receives funding from Illumina, Inc.

## References

1. Fragouli, E., Alfarawati, S., Spath, K., Jaroudi, S., Sarasa, J., Enciso, M. and Wells, D. (2013) The origin and impact of embryonic aneuploidy. *Hum. Genet.*, **132**, 1001–1013.
2. Hassold, T., Hall, H. and Hunt, P. (2007) The origin of human aneuploidy: where we have been, where we are going. *Hum. Mol. Genet.*, **16**, R203–R208.
3. Handyside, A.H., Montag, M., Magli, M.C., Repping, S., Harper, J., Schmutzler, A., Vesela, K., Gianaroli, L. and Geraedts, J. (2012) Multiple meiotic errors caused by predivision of chromatids in women of advanced maternal age undergoing in vitro fertilisation. *Eur. J. Hum. Genet.*, **20**, 742–747.
4. Vanneste, E., Voet, T., Le Caignec, C., Ampe, M., Konings, P., Melotte, C., Debrock, S., Amyere, M., Vikkula, M. and Schuit, F. (2009) Chromosome instability is common in human cleavage-stage embryos. *Nat. Med.*, **15**, 577–583.
5. Handyside, A.H. (2013) 24-chromosome copy number analysis: a comparison of available technologies. *Fertil. Steril.*, **100**, 595–602.
6. Zegers-Hochschild, F., Adamson, G.D., Dyer, S., Racowsky, C., de Mouzon, J., Sokol, R., Rienzi, L., Sunde, A., Schmidt, L., Cooke, I.D. et al. (2017) The international glossary on infertility and fertility care. *Fertil. Steril.*, **108**, 393–406.
7. Donate, A., Estop, A.M., Giraldo, J. and Templado, C. (2016) Paternal age and numerical chromosome abnormalities in human spermatozoa. *Cytogenet. Genome Res.*, **148**, 241–248.
8. McCoy, R.C., Demko, Z.P., Ryan, A., Banjevic, M., Hill, M., Sigurjonsson, S., Rabinowitz, M. and Petrov, D.A. (2015) Evidence of selection against complex mitotic-origin aneuploidy during preimplantation development. *PLoS Genet.*, **11**, e1005601.
9. Johnson, D.S., Gemelos, G., Baner, J., Ryan, A., Cinnioglu, C., Banjevic, M., Ross, R., Alper, M., Barrett, B., Frederick, J. et al. (2010) Preclinical validation of a microarray method for full molecular karyotyping of blastomeres in a 24-h protocol. *Hum. Reprod.*, **25**, 1066–1075.
10. Rabinowitz, M., Ryan, A., Gemelos, G., Hill, M., Baner, J., Cinnioglu, C., Banjevic, M., Potter, D., Petrov, D.A. and Demko, Z. (2012) Origins and rates of aneuploidy in human blastomeres. *Fertil. Steril.*, **97**, 395–401.
11. Handyside, A.H., Harton, G.L., Mariani, B., Thornhill, A.R., Affara, N., Shaw, M.A. and Griffin, D.K. (2010) Karyomapping: a universal method for genome wide analysis of genetic disease based on mapping crossovers between parental haplotypes. *J. Med. Genet.*, **47**, 651–658.
12. Ottolini, C.S., Newnham, L.J., Capalbo, A., Natesan, S.A., Joshi, H.A., Cimadomo, D., Griffin, D.K., Sage, K., Summers, M.C., Thornhill, A.R. et al. (2015) Genome-wide maps of recombination and chromosome segregation in human oocytes and embryos show selection for maternal recombination rates. *Nat. Genet.*, **47**, 727–735.
13. Natesan, S.A., Bladon, A.J., Coskun, S., Qubbaj, W., Prates, R., Munne, S., Coonen, E., Dreesen, J.C., Stevens, S.J., Paulussen, A.D. et al. (2014) Genome-wide karyomapping accurately identifies the inheritance of single-gene defects in human preimplantation embryos in vitro. *Genet. Med.*, **16**, 838–845.
14. Kumar, A., Ryan, A., Kitzman, J.O., Wemmer, N., Snyder, M.W., Sigurjonsson, S., Lee, C., Banjevic, M., Zarutskie, P.W., Lewis, A.P. et al. (2015) Whole genome prediction for preimplantation genetic diagnosis. *Genome Med.*, **7**, 35.
15. Hou, Y., Fan, W., Yan, L., Li, R., Lian, Y., Huang, J., Li, J., Xu, L., Tang, F., Xie, X.S. et al. (2013) Genome analyses of single human oocytes. *Cell*, **155**, 1492–1506.
16. Mantikou, E., Wong, K.M., Repping, S. and Mastenbroek, S. (2012) Molecular origin of mitotic aneuploidies in preimplantation embryos. *Biochim. Biophys. Acta*, **1822**, 1921–1930.
17. Delhanty, J.D., Harper, J.C., Ao, A., Handyside, A.H. and Winston, R.M. (1997) Multicolour FISH detects frequent chromosomal mosaicism and chaotic division in normal preimplantation embryos from fertile patients. *Hum. Genet.*, **99**, 755–760.
18. Chatzimeletiou, K., Morrison, E.E., Prapas, N., Prapas, Y. and Handyside, A.H. (2005) Spindle abnormalities in normally developing and arrested human preimplantation embryos in vitro identified by confocal laser scanning microscopy. *Hum. Reprod.*, **20**, 672–682.
19. Boveri, T. (1900). *Zellen-Studien: Heft 4, Ueber die natur der centrosomen*. Verlag Von Gustav Fischer, Stuttgart, Germany.
20. Balczon, R., Bao, L., Zimmer, W.E., Brown, K., Zinkowski, R.P. and Brinkley, B.R. (1995) Dissociation of centrosome replication events from cycles of DNA synthesis and mitotic division in hydroxyurea-arrested Chinese hamster ovary cells. *J. Cell. Biol.*, **130**, 105–115.
21. Schatten, H. and Sun, Q.Y. (2011) New insights into the role of centrosomes in mammalian fertilization and implications for ART. *Reproduction*, **142**, 793–801.
22. Palermo, G., Munné, S. and Cohen, J. (1994) The human zygote inherits its mitotic potential from the male gamete. *Hum. Reprod.*, **9**, 1220–1225.



23. Simerly, C., Wu, G.J., Zoran, S., Ord, T., Rawlins, R., Jones, J., Navara, C., Gerrity, M., Rinehart, J., Binor, Z. et al. (1995) The paternal inheritance of the centrosome, the cell's microtubule-organizing center, in humans, and the implications for infertility. *Nat. Med.*, **1**, 47–52.
24. Sathananthan, A.H., Ratnam, S.S., Ng, S.C., Tarin, J.J., Gianaroli, L. and Trounson, A. (1996) The sperm centriole: its inheritance, replication and perpetuation in early human embryos. *Hum. Reprod.*, **11**, 345–356.
25. Holubcová, Z., Blayney, M., Elder, K. and Schuh, M. (2015) Error-prone chromosome-mediated spindle assembly favors chromosome segregation defects in human oocytes. *Science*, **348**, 1143–1147.
26. Sedo, C.A., Schatten, H., Combelles, C.M. and Rawe, V.Y. (2011) The nuclear mitotic apparatus (NuMA) protein: localization and dynamics in human oocytes, fertilization, and early embryos. *Mol. Hum. Reprod.*, **17**, 392–398.
27. Plachot, M., Mandelbaum, J., Junca, A.M., De Grouchy, J., Salat-Baroux, J. and Cohen, J. (1989) Cytogenetic analysis and developmental capacity of normal and abnormal embryos after IVF. *Hum. Reprod.*, **4**, 99–103.
28. Kola, I., Trounson, A., Dawson, G. and Rogers, P. (1987) Trippronuclear human oocytes: altered cleavage patterns and subsequent karyotypic analysis of embryos. *Biol. Reprod.*, **37**, 395–401.
29. Wirka, K.A., Chen, A.A., Conaghan, J., Ivani, K., Gvakharia, M., Behr, B., Suraj, V., Tan, L. and Shen, S. (2014) Atypical embryo phenotypes identified by time-lapse microscopy: high prevalence and association with embryo development. *Fertil. Steril.*, **101**, 1637–1648.
30. Hlinka, D., Kalatova, B., Uhrinova, I., Dolinska, S., Rutarova, J., Rezacova, J., Lazarovska, S. and Dudas, M. (2012) Time-lapse cleavage rating predicts human embryo viability. *Physiol. Res.*, **61**, 513.
31. Kalatova, B., Jesenska, R., Hlinka, D. and Dudas, M. (2015) Tripolar mitosis in human cells and embryos: occurrence, pathophysiology and medical implications. *Acta Histochem.*, **117**, 111–125.
32. Zhan, Q., Ye, Z., Clarke, R., Rosenwaks, Z. and Zaninovic, N. (2016) Direct unequal cleavages: embryo developmental competence, genetic constitution and clinical outcome. *PLoS One*, **11**, e0166398.
33. Ottolini, C., Kitchen, J., Xanthopoulou, L., Gordon, T., Summers, M.C. and Handyside, A.H. (2017) Tripolar mitosis and partitioning of the genome arrests human preimplantation development in vitro. *Sci. Rep.*, **7**, 9744.
34. McCoy, R.C., Demko, Z., Ryan, A., Banjevic, M., Hill, M., Sigurjonsson, S., Rabinowitz, M., Fraser, H.B. and Petrov, D.A. (2015) Common variants spanning PLK4 are associated with mitotic-origin aneuploidy in human embryos. *Science*, **348**, 235–238.
35. McCoy, R.C. (2017) Mosaicism in preimplantation human embryos: when chromosomal abnormalities are the norm. *Trends Genet.*, **33**, 448–463.
36. Staessen, C. and Van Steirteghem, A.C. (1997) The chromosomal constitution of embryos developing from abnormally fertilized oocytes after intracytoplasmic sperm injection and conventional in-vitro fertilization. *Hum. Reprod.*, **12**, 321–327.
37. Grau, N., Escrich, L., Martín, J., Rubio, C., Pellicer, A. and Escribá, M.J. (2011) Self-correction in trippronucleated human embryos. *Fertil. Steril.*, **96**, 951–956.
38. Grau, N., Escrich, L., Galiana, Y., Meseguer, M., García-Herrero, S., Remohí, J. and Escribá, M.J. (2015) Morphokinetics as a predictor of self-correction to diploidy in trippronucleated intracytoplasmic sperm injection-derived human embryos. *Fertil. Steril.*, **104**, 728–735.
39. Destouni, A., Esteki, M.Z., Catteeuw, M., Tšuiiko, O., Dimitriadou, E., Smits, K., Kurg, A., Salumets, A., Van Soom, A., Voet, T. et al. (2016) Zygotes segregate entire parental genomes in distinct blastomere lineages causing cleavage-stage chimerism and mixoploidy. *Genome Res.*, **26**, 567–578.
40. Bolton, H., Graham, S.J., Van der Aa, N., Kumar, P., Theunis, K., Gallardo, E.F., Voet, T. and Zernicka-Goetz, M. (2016) Mouse model of chromosome mosaicism reveals lineage-specific depletion of aneuploid cells and normal developmental potential. *Nat. Comm.*, **7**, 11165.
41. Treff, N.R. and Franasiak, J.M. (2017) Detection of segmental aneuploidy and mosaicism in the human preimplantation embryo: technical considerations and limitations. *Fertil. Steril.*, **107**, 27–31.
42. Sandalinas, M., Sadowy, S., Alikani, M., Calderon, G., Cohen, J. and Munné, S. (2001) Developmental ability of chromosomally abnormal human embryos to develop to the blastocyst stage. *Hum. Reprod.*, **16**, 1954–1958.
43. Ruangvutitert, P., Delhanty, J.D., Serhal, P., Simopoulou, M., Rodeck, C.H. and Harper, J.C. (2000) FISH analysis on day 5 post-insemination of human arrested and blastocyst stage embryos. *Prenat. Diagn.*, **20**, 552–560.
44. Rubio, C., Rodrigo, L., Mercader, A., Mateu, E., Buendía, P., Pehlivan, T., Vilorio, T., De los Santos, M.J., Simón, C., Remohí, J. and Pellicer, A. (2007) Impact of chromosomal abnormalities on preimplantation embryo development. *Prenat. Diagn.*, **27**, 748–756.
45. Quintyne, N.J., Reing, J.E., Hoffelder, D.R., Gollin, S.M. and Saunders, W.S. (2005) Spindle multipolarity is prevented by centrosomal clustering. *Science*, **307**, 127–129.
46. Krämer, A., Maier, B. and Bartek, J. (2011) Centrosome clustering and chromosomal (in) stability: a matter of life and death. *Mol. Oncol.*, **5**, 324–335.
47. Ganem, N.J., Godinho, S.A. and Pellman, D. (2009) A mechanism linking extra centrosomes to chromosomal instability. *Nature*, **460**, 278–282.
48. Habedanck, R., Stierhof, Y.D., Wilkinson, C.J. and Nigg, E.A. (2005) The Polo kinase Plk4 functions in centriole duplication. *Nat. Cell Biol.*, **7**, 1140–1146.
49. Bettencourt-Dias, M., Rodrigues-Martins, A., Carpenter, L., Riparbelli, M., Lehmann, L., Gatt, M.K., Carmo, N., Balloux, F., Callaini, G. and Glover, D.M. (2005) SAK/PLK4 is required for centriole duplication and flagella development. *Curr. Biol.*, **15**, 2199–2207.
50. Ko, M.A., Rosario, C.O., Hudson, J.W., Kulkarni, S., Pollett, A., Dennis, J.W. and Swallow, C.J. (2005) Plk4 haploinsufficiency causes mitotic infidelity and carcinogenesis. *Nat. Genet.*, **37**, 883–888.
51. Duensing, A., Liu, Y., Perdreau, S.A., Kleylein-Sohn, J., Nigg, E.A. and Duensing, S. (2007) Centriole overduplication through the concurrent formation of multiple daughter centrioles at single maternal templates. *Oncogene*, **26**, 6280–6288.
52. Rosario, C.O., Ko, M.A., Haffani, Y.Z., Gladly, R.A., Paderova, J., Pollett, A., Squire, J.A., Dennis, J.W. and Swallow, C.J. (2010) Plk4 is required for cytokinesis and maintenance of chromosomal stability. *Proc. Natl. Acad. Sci. U.S.A.*, **107**, 6888–6893.
53. Liang, S., Zhao, M.H., Guo, J., Choi, J.W., Kim, N.H. and Cui, X.S. (2016) Polo-like kinase 4 regulates spindle and actin



- assembly in meiosis and influence of early embryonic development in bovine oocytes. *Theriogenology*, **85**, 754–761.
54. Xu, X., Huang, S., Zhang, B., Huang, F., Chi, W., Fu, J., Wang, G., Li, S., Jiang, Q. and Zhang, C. (2017) DNA replication licensing factor Cdc6 and Plk4 kinase antagonistically regulate centrosome duplication via Sas-6. *Nat. Commun.*, **8**, 15164.
  55. Galletta, B.J., Fagerstrom, C.J., Schoborg, T.A., McLamarrah, T.A., Ryniawec, J.M., Buster, D.W., Slep, K.C., Rogers, G.C. and Rusan, N.M. (2016) A centrosome interactome provides insight into organelle assembly and reveals a non-duplication role for Plk4. *Nat. Commun.*, **7**, 12476.
  56. Aydogan, M.G., Wainman, A., Saurya, S., Steinacker, T.L., Caballe, A., Novak, Z.A., Baumbach, J., Muschalik, N. and Raff, J.W. (2018) A homeostatic clock sets daughter centriole size in flies. *J. Cell Biol.*, **217**, 1233–1248.
  57. Coelho, P.A., Bury, L., Sharif, B., Riparbelli, M.G., Fu, J., Callaini, G., Glover, D.M. and Zernicka-Goetz, M. (2013) Spindle formation in the mouse embryo requires Plk4 in the absence of centrioles. *Dev. Cell*, **27**, 586–597.
  58. Zhang, Q., Li, G., Zhang, L., Sun, X., Zhang, D., Lu, J., Ma, J., Yan, J. and Chen, Z.J. (2017) Maternal common variant rs2305957 spanning PLK4 is associated with blastocyst formation and early recurrent miscarriage. *Fertil. Steril.*, **107**, 1034–1040.
  59. Sharif, F.A. and Ashour, M. (2015) The single nucleotide polymorphism rs2305957 G/A is not associated with recurrent pregnancy loss. *Int. J. Res. Med. Sci.*, **3**, 3123–3125.
  60. Meseguer, M., Herrero, J., Tejera, A., Hilligsøe, K.M., Ramsing, N.B. and Remohí, J. (2011) The use of morphokinetics as a predictor of embryo implantation. *Hum. Reprod.*, **26**, 2658–2671.
  61. Rubio, I., Kuhlmann, R., Agerholm, I., Kirk, J., Herrero, J., Escribá, M.J., Bellver, J. and Meseguer, M. (2012) Limited implantation success of direct-cleaved human zygotes: a time-lapse study. *Fertil. Steril.*, **98**, 1458–1463.
  62. R. Development Core Team, (2013). *R: A Language and Environment for Statistical Computing*. R Foundation for Statistical Computing, Vienna, Austria.
  63. Wickham, H. (2016). *ggplot2: Elegant Graphics for Data Analysis*. Springer, New York, NY.
  64. Zeileis, A., Kleiber, C. and Jackman, S. (2008) Regression models for count data in R. *J. Stat. Softw.*, **27**, 1–25.
  65. Manichaikul, A., Mychaleckyj, J.C., Rich, S.S., Daly, K., Sale, M. and Chen, W.M. (2010) Robust relationship inference in genome-wide association studies. *Bioinformatics*, **26**, 2867–2873.