

RESEARCH ARTICLE

Open Access



# Sustained high glucose exposure sensitizes macrophage responses to cytokine stimuli but reduces their phagocytic activity

Sofia Pavlou, Jaime Lindsay, Rebecca Ingram, Heping Xu and Mei Chen<sup>\*</sup>

## Abstract

**Background:** Macrophages are tissue resident immune cells important for host defence and homeostasis. During diabetes, macrophages and other innate immune cells are known to have a pro-inflammatory phenotype, which is believed to contribute to the pathogenesis of various diabetic complications. However, diabetic patients are highly susceptible to bacterial infections, and often have impaired wound healing. The molecular mechanism underlying the paradox of macrophage function in diabetes is not fully understood. Recent evidence suggests that macrophage functions are governed by metabolic reprogramming. Diabetes is a disorder that affects glucose metabolism; dysregulated macrophage function in diabetes may be related to alterations in their metabolic pathways. In this study, we seek to understand the effect of high glucose exposure on macrophage phenotype and functions.

**Results:** Bone marrow cells were cultured in short or long term high glucose and normal glucose medium; the number and phenotype of bone marrow derived macrophages were not affected by long-term high glucose treatment. Short-term high glucose increased the expression of IL-1 $\beta$ . Long-term high glucose increased the expression of IL-1 $\beta$  and TNF $\alpha$  but reduced the expression of IL-12p40 and nitric oxide production in M1 macrophage. The treatment also increased Arg-1 and IL-10 expression in M2 macrophages. Phagocytosis and bactericidal activity was reduced in long-term high glucose treated macrophages and peritoneal macrophages from diabetic mice. Long-term high glucose treatment reduced macrophage glycolytic capacity and glycolytic reserve without affecting mitochondrial ATP production and oxidative respiration.

**Conclusion:** Long-term high glucose sensitizes macrophages to cytokine stimulation and reduces phagocytosis and nitric oxide production, which may be related to impaired glycolytic capacity.

**Keywords:** Macrophages, Diabetes, Cytokine, Phagocytosis, Glycolysis

## Background

Macrophages are tissue resident immune cells important for host defence and homeostasis. During inflammation, circulating monocytes are recruited and differentiated into macrophages at the site of tissue damage and infection. The key functions of these macrophages are to eliminate insults or pathogens and to promote tissue repair. During diabetes, macrophages and other innate immune cells are known to have a pro-inflammatory

phenotype, which is believed to contribute to the pathogenesis of various diabetic complications, including diabetic nephropathy, atherosclerosis, and retinopathy [1]. Uncontrolled monocyte and neutrophil activation may contribute to diabetes-mediated vascular damage through abnormal leukocyte-endothelial interaction or leukostasis [2, 3]. Inhibition of inflammation has been proposed as a therapeutic approach for diabetic complications [4, 5]. However, diabetic patients are highly susceptible to bacterial infections, and often have impaired wound healing [6]. It is believed that this is partially related to the reduced bactericidal function and wound healing capacity of innate immune cells in diabetic patients. The molecular

<sup>\*</sup> Correspondence: [m.chen@qub.ac.uk](mailto:m.chen@qub.ac.uk)  
Centre for Experimental Medicine, School of Medicine, Dentistry & Biomedical Science, Queen's University Belfast, Belfast, UK



mechanism underlying the paradox of macrophage function in diabetes is not fully understood.

Recent evidence suggests that macrophage functions are governed by metabolic reprogramming [7]. Metabolic pathways not only provide energy in the form of adenosine triphosphate (ATP), but also regulate macrophage functions [7]. For example, during acute inflammation, the classically activated macrophages (M1) predominantly utilize glycolysis, but not mitochondrial oxidative phosphorylation, to support their inflammatory function [8]. This metabolic pathway generates amino acids, ribose and nicotinamide adenine dinucleotide phosphate (NADPH) that are necessary for cytokine synthesis, DNA replication and production of reactive oxygen species (ROS) [7]. In addition, glycolytic enzymes and intermediate products are actively involved in the regulation of cytokine production. The pyruvate kinase M2 (PKM2) has been shown to induce IL-1 $\beta$  expression through activating hypoxia inducible factor 1, alpha subunit (HIF1 $\alpha$ ) [8], whereas succinate enhances the stabilization of HIF1 $\alpha$  and supports IL-1 $\beta$  expression [9]. Since diabetes is a disorder that affects glucose metabolism, we seek to understand whether dysregulated macrophage function in diabetes is related to alterations in their metabolic pathways.

In this study, we investigated the effect of high glucose on bone marrow cell proliferation and differentiation into macrophages. We further investigated the metabolic pathways of macrophages generated under high glucose and normal glucose conditions and how this is related to their functions. We found that sustained high glucose treatment impairs the glycolysis pathway in macrophages, which may be related to their reduced bactericidal activity and ROS production.

## Results

### The effect of long-term high glucose on bone marrow cell proliferation and differentiation

In diabetes, myeloid progenitor cells are subjected to sustained high glucose conditions. To investigate the impact of the sustained hyperglycaemic environment on macrophage progenitors, we generated BMDMs under high glucose DMEM (HighGlu) conditions. Flow cytometric analysis showed that over 96% of cells were F4/80<sup>+</sup> (Fig. 1a). The percentage and absolute number of F4/80<sup>+</sup> macrophages were similar in BMDMs generated under normal glucose DMEM (NormGlu) and HighGlu conditions (Fig. 1a). MTT assay further confirmed that the cell numbers from different groups were also similar (Fig. 1b).

Ki67 is a nuclear protein necessary for cell proliferation [10]. There was no significant difference in the percentage of Ki67<sup>+</sup> cells over the total number of cells (DAPI<sup>+</sup>) between the different treatment groups (Fig. 1c, d). Western blot did not detect the cleaved form of Caspase-3 (Fig. 1e) in any of

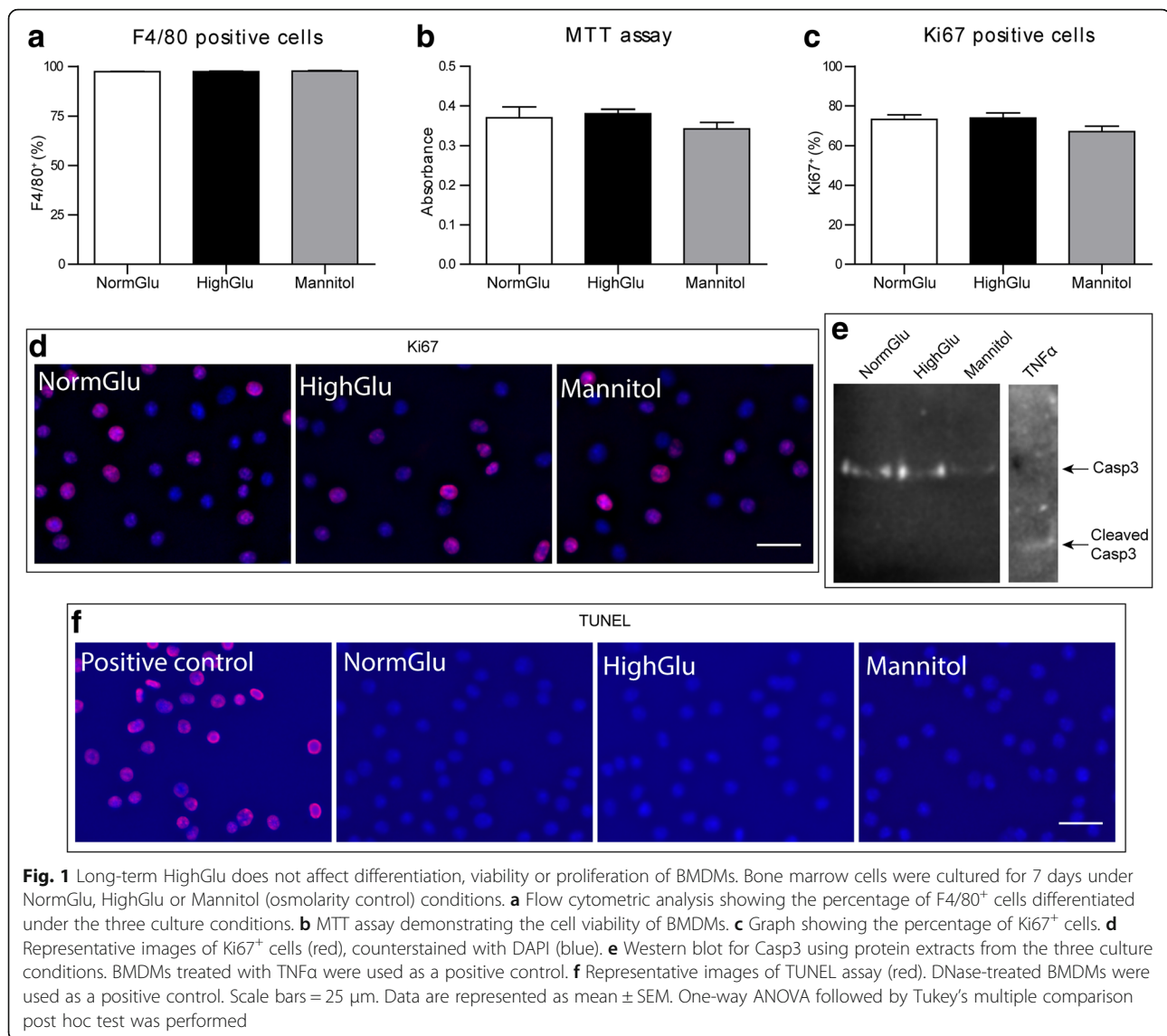
the experimental groups. No apoptotic cells were detected in the treatment groups by TUNEL staining (Fig. 1f). Our results suggest that long-term HighGlu treatment did not affect macrophage differentiation from bone marrow cells and did not induce macrophage apoptosis.

### Short-term and long-term high glucose treatment on BMDM immune gene expression

Next, we investigated the impact of HighGlu on macrophage gene expression. The exposure of naïve BMDMs generated under NormGlu to HighGlu for 24 h (short-term HighGlu) increased IL-1 $\beta$  expression but did not affect the expression of inducible nitric oxide synthase 2 (iNOS), tumour necrosis factor- $\alpha$  (TNF $\alpha$ ), interleukin 6 (IL-6), interleukin 12p40 (IL-12p40), arginase-1 (Arg-1), and interleukin 10 (IL-10) (Fig. 2a). When M1 macrophages were exposed to HighGlu for 24 h, the expression of IL-1 $\beta$  was significantly increased (Fig. 2b). Short-term HighGlu treatment did not affect other genes expression in both M1 (Fig. 2b) and M2 macrophages (Fig. 2c). NO production was also not affected (Fig. 2d). The results suggest that short-term HighGlu enhances macrophage pro-inflammatory response.

BMDMs generated under long-term HighGlu condition had significantly higher levels of IL-1 $\beta$  expression, but the expression of other immune genes such as iNOS, TNF $\alpha$ , IL-6, IL-12p40, Arg-1 and IL-10 was not affected compared with BMDMs generated under NormGlu conditions (Fig. 2e). Following M1 polarization, BMDMs generated under long-term HighGlu conditions expressed lower levels of IL-12p40, but higher levels of TNF $\alpha$  and IL-1 $\beta$  compared to M1 BMDMs under NormGlu conditions (Fig. 2f). Long-term HighGlu treatment also reduced the expression of iNOS, although not significantly (Fig. 2f). In contrast with the iNOS expression, NO production was significantly lower in long-term HighGlu treated M1 macrophages (Fig. 2h). Interestingly, IL4-induced upregulation of Arg-1 and IL-10 was significantly enhanced in long-term HighGlu treated BMDMs (Fig. 2g). Mannitol did not affect the expression levels of the aforementioned cytokines in BMDMs (data not shown). The results suggest that long-term HighGlu may alter macrophage response to cytokine stimulations. In response to LPS + IFN $\gamma$  stimulation, they have reduced ability to generate NO, but have increased TNF $\alpha$  and IL-1 $\beta$  expression. They also appear to be more sensitive to Th2-type cytokine (e.g., IL-4) stimulation.

To investigate if the increased IL-1 $\beta$  mRNA expression in HighGlu-treated macrophages resulted in higher levels of protein secretion, IL-1 $\beta$  levels in culture supernatants were measured using ELISA. The results show that the levels of IL-1 $\beta$  are undetectable in naïve BMDMs (data not shown). LPS + IFN $\gamma$  stimulation and high glucose significantly increased IL-1 $\beta$  production (Fig. 3a-b).



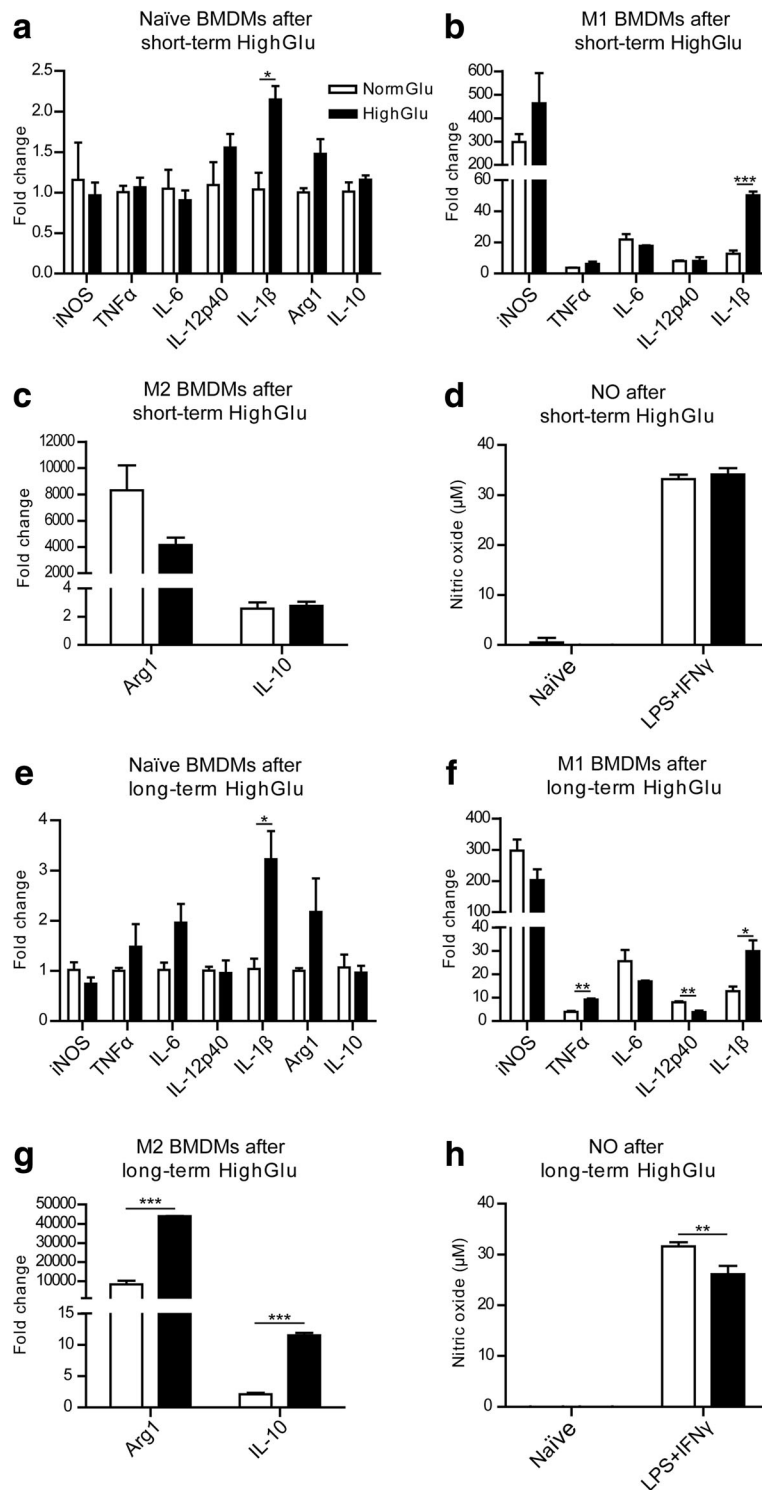
Since macrophages generated under NormGlu and HighGlu conditions responded differently to LPS + IFN $\gamma$  and IL-4 stimulations, we investigated whether they expressed different levels of relevant receptors. Short-term HighGlu only increased Toll-like receptor 4 (TLR-4) expression in BMDMs (Fig. 3c), whereas long-term HighGlu significantly increased the expression of TLR-4, interferon gamma receptor 1 (IFN $\gamma$ R1) and interferon gamma receptor 2 (IFN $\gamma$ R2) (Fig. 3d). Interestingly, the expression levels of interleukin 4 receptor, alpha (IL4ra) remained unchanged in both short-term and long-term HighGlu treated macrophages (Fig. 3c-d).

#### The effect of long-term high glucose on BMDM phagocytosis and bactericidal function

The evident difference between short-term and long-term HighGlu on macrophage response to cytokine

stimulation prompted us to further investigate other macrophage functions such as phagocytosis. Using the pHrodo *S. aureus* bioparticles phagocytosis assay, we did not observe any difference between macrophages treated with or without short-term HighGlu (Additional file 1: Figure S1). However, in macrophages generated under HighGlu significantly reduced phagocytosis was observed after 1.5 h and 2 h of bioparticle incubation compared with BMDMs in NormGlu and Mannitol conditions (Fig. 4a). Long-term Mannitol treatment did not affect macrophage phagocytosis (Fig. 4a).

To further confirm the effect of long-term HighGlu on macrophage phagocytic function, we harvested elicited peritoneal macrophages from STZ-induced diabetic mice, ex-diabetic mice and healthy controls and performed the same phagocytosis assay. Peritoneal macrophages from diabetic mice showed significantly reduced



**Fig. 2** (See legend on next page.)

(See figure on previous page.)

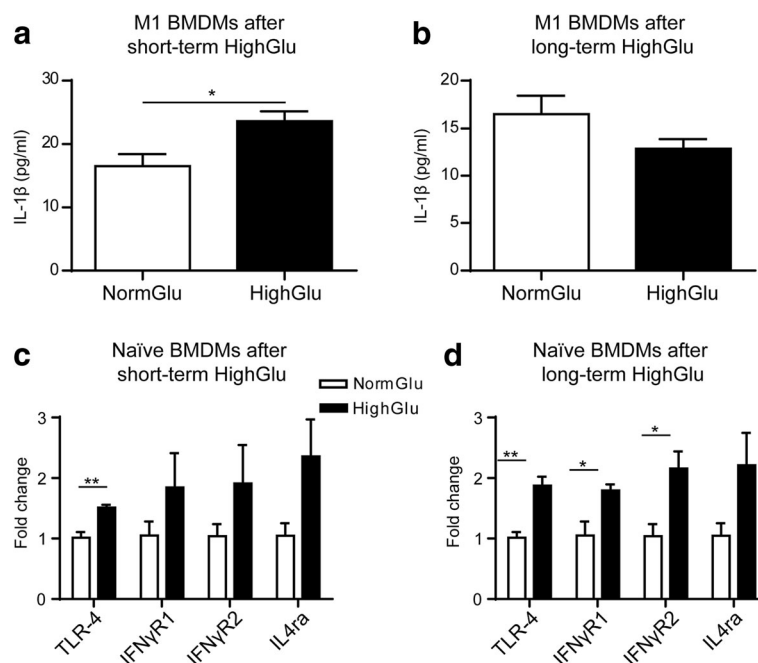
**Fig. 2** The effects of short and long-term HighGlu on BMDM gene expression and NO production. Bone marrow cells were cultured for 7 days under NormGlu (white bars) or HighGlu (black bars) conditions. They were then plated and stimulated with LPS + IFN $\gamma$  (M1) or IL-4 (M2) for 24 h. For short-term HighGlu, cells differentiated under NormGlu, were exposed to HighGlu for 24 h along with M1 or M2 stimulation. **a-c** qRT-PCR showing the expression of immune-related genes in naïve (**a**), LPS + IFN $\gamma$  (**b**) or IL-4 (**c**) treated BMDMs after short-term exposure to HighGlu treatment. **d** Graph showing the concentration of NO in supernatants of naïve and LPS + IFN $\gamma$ -treated BMDMs under NormGlu or short-term HighGlu conditions. **e-g** qRT-PCR showing the expression of immune-related genes in naïve (**e**), LPS + IFN $\gamma$  (**f**) or IL-4 (**g**) treated BMDMs after long-term exposure to HighGlu treatment. **h** NO concentration in the supernatants of naïve and LPS + IFN $\gamma$  stimulated BMDMs after long-term HighGlu. Data are represented as mean  $\pm$  SEM. Unpaired, two-tailed Student's t test was performed. \*  $p < 0.05$ , \*\*  $p < 0.01$ , \*\*\*  $p < 0.001$

phagocytic capacity when compared to age-matched healthy control mice (Fig. 4b). Interestingly, peritoneal macrophages from ex-diabetic mice had normal levels of phagocytosis, suggesting that hyperglycaemia-induced phagocytosis impairment is reversible.

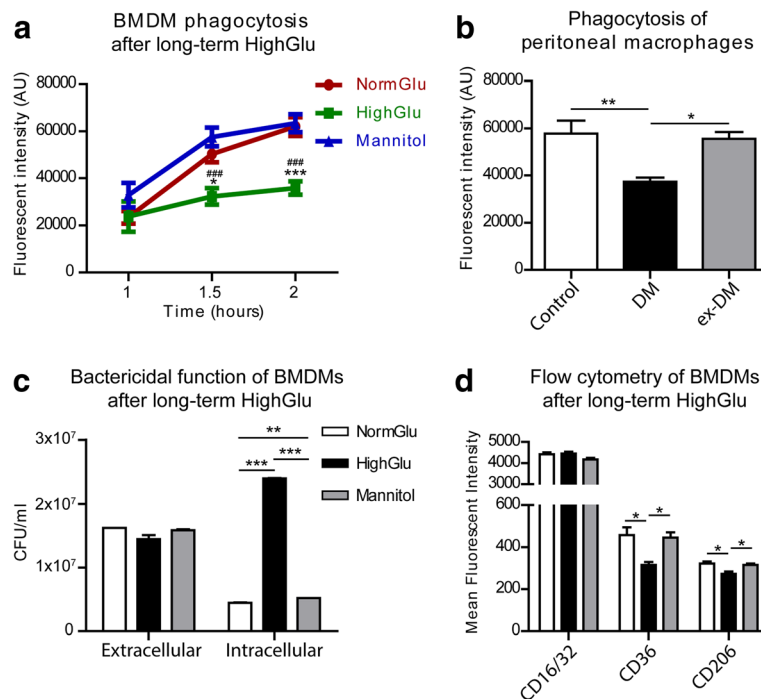
The pHrodo *S. aureus* bioparticles assay not only detects the uptake of bacterial particles, but also measures the formation of phagolysosomes, a pivotal action by macrophage to kill bacteria. The bactericidal function of macrophages was further assessed by challenging macrophages with live pathogenic bacteria. After 1 h incubation of *P. aeruginosa* PAO1 with BMDMs, extracellular as well as intracellular bacteria were quantified. Extracellular bacterial colonies were comparable between the different groups (Fig. 4c),

suggesting that the same number of bacteria were taken up by the different macrophages. Interestingly, the colonies of intracellular surviving bacteria in macrophages generated under long-term HighGlu conditions were significantly higher than those in macrophages generated under NormGlu and Mannitol conditions (Fig. 4c). The results suggest that long-term HighGlu impairs bactericidal ability of macrophages.

To understand if the reduced phagocytosis in BMDMs generated under HighGlu conditions seen at 1.5 h and 2 h (Fig. 4a) is related to altered scavenger receptor expression, the expression of cell surface receptors CD16/32, CD36 and CD206 in different types of BMDMs was examined by flow cytometry. Our results show that the expression levels



**Fig. 3** The effects of short- and long-term HighGlu on IL-1 $\beta$  secretion and LPS/cytokine receptor expression. Bone marrow cells were cultured for 7 days under NormGlu (white bars) or HighGlu (black bars) conditions. They were then plated and stimulated with LPS + IFN $\gamma$  (M1) for 24 h. For short-term HighGlu, cells differentiated under NormGlu, were exposed to HighGlu for 24 h along with M1 stimulation. **a-b** ELISA showing the levels of IL-1 $\beta$  in the supernatants of M1 BMDMs exposed to short-term (**a**) or long-term (**b**) HighGlu. **c-d** qRT-PCR showing the expression of LPS and cytokine receptors in naïve BMDMs exposed to short-term (**c**) or long-term (**d**) HighGlu. Data are represented as mean  $\pm$  SEM. Unpaired, two-tailed Student's t test was performed. \*  $p < 0.05$ , \*\*  $p < 0.01$



**Fig. 4** Long-term HighGlu and diabetes mellitus affect the phagocytic and bactericidal functions of macrophages. Bone marrow cells were cultured for 7 days under NormGlu, HighGlu or Mannitol conditions. Peritoneal macrophages were isolated from control, diabetic (DM) or ex-diabetic (ex-DM) mice. Phagocytosis was assessed using pHrodo *S. aureus* bioparticles and bactericidal function using *P. aeruginosa* PAO1 cultures. The expression of CD16/32, CD36 and CD206 was measured by flow cytometry. **a** Phagocytic activity of BMDMs cultured under NormGlu (red), HighGlu (green) or Mannitol (blue) conditions. **b** Phagocytic activity of peritoneal macrophages. **c** Bactericidal function of BMDMs. **d** Mean fluorescence intensity of CD16/32, CD36 and CD206 in BMDMs. White bars: NormGlu, black bars: HighGlu, grey bars: Mannitol. Data are represented as mean  $\pm$  SEM. Two-way ANOVA with bonferroni correction was performed in (a); \*  $p < 0.05$ , \*\*\*  $p < 0.001$  relative to NormGlu, ###  $p < 0.001$  relative to Mannitol. One-way ANOVA followed by Tukey's multiple comparison post hoc test was performed in (b-d); \*  $p < 0.05$ , \*\*  $p < 0.01$ , \*\*\*  $p < 0.001$

of CD16/CD32 were comparable (Fig. 4d). However, the expression of CD36 and CD206 was significantly lower in BMDMs cultured under HighGlu conditions compared to those cultured under NormGlu or Mannitol conditions (Fig. 4d).

#### The effect of long-term high glucose on macrophage glucose metabolism and mitochondrial oxygen consumption

Immune cells' function is governed by their metabolisms [11]. We hypothesize that long-term HighGlu treatment may affect macrophage function through regulating their metabolic pathways. In the Glycolysis Stress assay, BMDMs were incubated in basal medium (medium without added glucose, supplemented with glutamine) for 1 h followed by the various stimulations depicted in Fig. 5a. The non-glycolytic (baseline) extracellular acidification rate (ECAR) of naïve BMDMs in all culture conditions was similar (Fig. 5a). The addition of glucose and subsequently oligomycin resulted in a rapid increase in ECAR (Fig. 5a). Both short-term (24 h, Fig. 5a, b) and long-term (7 days, Fig. 5c, d) HighGlu treatment significantly reduced BMDM response to glucose and

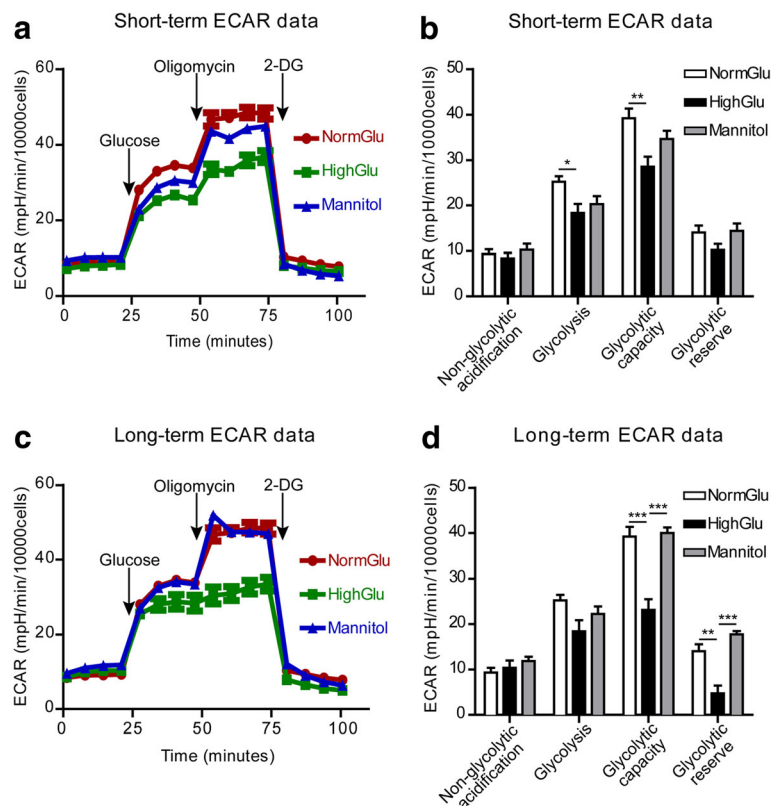
oligomycin stimulations. Specifically, the short-term HighGlu treatment reduced glycolysis and glycolytic capacity (Fig. 5b); whereas long-term HighGlu reduced glycolytic capacity and glycolytic reserve (Fig. 5d).

The Cell Mito Stress assay showed that the basal respiration rates were at similar levels in macrophages generated under the different conditions (Fig. 6a, c). Blocking ATP synthase using oligomycin allows the measurement of ATP production by mitochondria. Macrophages generated under different conditions had the same levels of mitochondrial ATP production (Fig. 6). In addition, the proton leakage, maximal respiration, spare capacity, non-mitochondrial respiration (Fig. 6b, d) were comparable in different macrophages.

Our results suggest that mitochondrial oxygen consumption was not affected by short-term or long-term high glucose treatment. The reduced glycolysis might contribute to high glucose-mediated altered macrophage functions.

#### Discussion

In this study, we show that BMDMs generated under long-term high glucose conditions pose a number of



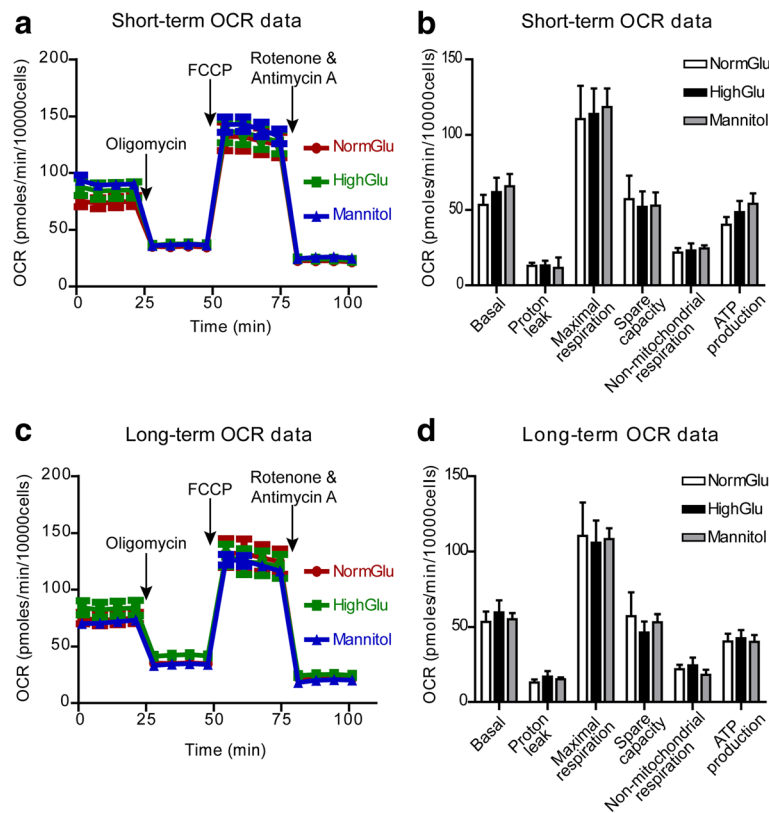
**Fig. 5** HighGlucose treatments affect the glycolytic pathway of BMDMs. Bone marrow cells were cultured for 7 days under NormGlu, HighGlu or Mannitol conditions (long-term treatments). For short-term HighGlu and Mannitol, cells differentiated under NormGlu, were exposed to HighGlu or Mannitol for 24 h, respectively. The glycolysis stress assay was performed using the Seahorse XFe96 analyzer. **a** Representative profile after glycolysis stress assay showing the ECAR of BMDMs exposed to short-term NormGlu (red), HighGlu (green) or Mannitol (blue). **b** Graph showing non-glycolytic acidification, glycolysis, glycolytic capacity and glycolytic reserve of BMDMs after short-term NormGlu (white bars), HighGlu (black bars) and Mannitol (grey bars) treatments. **c** Representative profile after glycolysis stress assay showing the ECAR of long-term treated BMDMs. **d** Graph showing non-glycolytic acidification, glycolysis, glycolytic capacity and glycolytic reserve of BMDMs after long-term exposure to the different conditions. Data are represented as mean  $\pm$  SEM. One-way ANOVA followed by Tukey's multiple comparison post hoc test was performed; \*  $p < 0.05$ , \*\*  $p < 0.01$ , \*\*\*  $p < 0.001$

intrinsic changes compared to cells generated under normal glucose conditions. Under naïve conditions BMDMs express higher levels of IL-1 $\beta$  and upon LPS + IFN $\gamma$  stimulation they produce higher levels of TNF $\alpha$  but lower levels of nitric oxide. They also express higher levels of Arg-1 and IL-10 upon IL-4 stimulation compared with BMDMs generated under normal glucose conditions. The phagocytosis and bactericidal activity of these cells appear to be impaired. The phenotype and function of these long-term high glucose treated cells mirror the monocyte/macrophage functions observed in diabetic animals and patients, i.e. they are pro-inflammatory and contribute to the development of diabetic complications, but have reduced defence and tissue repair capacities. This in vitro system is therefore, a good model to study diabetes-mediated immune dysfunction.

Dysregulated innate immune activation is known to contribute to diabetic complications [1, 5, 6, 12]; whether this is due to the intrinsic change of innate immune cells or the

noxious tissue microenvironment remains elusive. Results from diabetic animals and patients are controversial. The volume of bone marrow and the hematopoietic fraction were reduced in STZ-induced diabetic mice [13]. The populations of circulating F4/80 $^+$ , CD11b $^+$ , CCR2 $^+$  or Ly6G $^+$  cells in diabetic mice were reported to be reduced in some studies [14], but increased in others [6]. Mononuclear cells from diabetic patients secrete less IL-1 and IL-6 after LPS stimulation [15, 16]. Increased glycation is known to inhibit IL-10 and TNF $\alpha$  production by immune cells [17], which suggests that the lower cytokine production may be a consequence of diabetes-mediated intrinsic defect in these cells. In our study, long-term HighGlu did not affect the differentiation of bone marrow cells into F4/80 $^+$  macrophages, but the function of these cells appears to be altered (see below).

Nitric oxide (NO) is a signalling molecule critically involved in inflammation [18, 19]. Sustained production of NO endows macrophages with cytostatic or cytotoxic



**Fig. 6** HighGlu treatments has no effect on the mitochondrial oxidative phosphorylation of BMDMs. Bone marrow cells were cultured for 7 days under NormGlu, HighGlu or Mannitol conditions (long-term treatments). For short-term HighGlu and Mannitol, cells differentiated under NormGlu, were exposed to HighGlu or Mannitol for 24 h, respectively. The Mito stress assay was performed using the seahorse XFe96 Analyzer. **a** Representative profile after Mito stress assay showing the OCR of BMDMs exposed to short-term NormGlu (red), HighGlu (green) or Mannitol (blue). **b** Graph showing basal OCR, proton leakage, maximal respiration, spare capacity, non-mitochondrial respiration and ATP production of BMDMs after acute NormGlu (white bars), HighGlu (black bars) and Mannitol (grey bars) treatments. **c** Representative profile after Mito stress assay showing the OCR of long-term treated BMDMs. **d** Graph showing the different aspects of mitochondrial oxidative phosphorylation pathway of BMDMs after long-term exposure to the different conditions. Data are represented as mean  $\pm$  SEM. One-way ANOVA followed by Tukey's multiple comparison post hoc test was performed

activity against viruses, bacteria and other external pathogens [20]. BMDMs cultured under long-term high glucose conditions produced less NO upon LPS + IFN $\gamma$  stimulation, although the mRNA expression levels of iNOS did not show any significant reduction. It is possible that other isoforms of NOS (e.g., eNOS) or the availability of arginine in long-term high glucose treated macrophages may be affected. Additionally, the long-term high glucose may also affect the NO production at posttranscriptional, translational and posttranslational levels [21]. They also express lower levels of IL-6 and IL-12p40 and have impaired phagocytic and bactericidal functions. Reduced NO production has been reported in high glucose treated human macrophage J774 cells [22]. Increased NO production [23] and lower ROS production [24] has been observed in peritoneal macrophages from diabetic rats. BMDMs and peritoneal macrophages from the NOD mice had reduced ability to phagocytise apoptotic cells [25–27]. Reddy and colleagues [28] reported reduced expression of iNOS, IL-10 and Arg-1

in BMDM from db/db mice. All these results suggest that diabetes or long-term high glucose down-regulates iNOS expression and reduces NO production. The molecular mechanism underlying the differential responses to cytokine stimulations between short-term and long-term HighGlu treated macrophages remains elusive. We believe that the long-term HighGlu treated macrophages resemble their *in vivo* counterparts in diabetic conditions.

Despite reduced NO production following long-term HighGlu treatment, these cells express higher levels of TNF $\alpha$  and IL-1 $\beta$ , suggesting a pro-inflammatory phenotype. This agrees with a previous study, which showed that the myeloid cells recruited to wounds of diabetic mice are intrinsically primed to be more pro-inflammatory than those of non-diabetic mice [29]. TNF $\alpha$  and IL-1 $\beta$  were also higher in cultures of peritoneal macrophages in STZ-induced diabetic rats comparing to control rats [23]. High glucose leads to increased production of IL-1 $\beta$  and TNF $\alpha$  via the NF- $\kappa$ B pathway [30, 31]. Interestingly, the long-term HighGlu



treated macrophages also express higher levels of Arg-1 and IL-10 following IL-4 stimulation, suggesting an enhanced M2 phenotype. A previous study by Cucak and colleagues [32] reported an M2-type phenotype in macrophages from 28-week db/db mice. Our data suggest that long-term high glucose sensitizes macrophages to cytokine stimulations i.e., they present exaggerated responses to both Th1- and Th2-type cytokine stimulation, which may contribute to the dysregulated immune response observed in diabetic patients.

The molecular mechanism underlying long-term High Glu-mediated alteration of macrophage function remains unknown. Glucose uptake in macrophages is mediated predominately by glucose transporter 1 [33], which does not rely on insulin signalling. We have found that the HighGlu treatment impairs macrophage glycolytic capacity and glycolytic reserve without affecting mitochondrial ATP production and oxidative respiration. Glycolytic capacity is a measure of the maximum rate of conversion of glucose to pyruvate or lactate by a cell, and the difference between basal glycolysis and glycolytic capacity is known as glycolytic reserve. The basal glycolysis did not differ between BMDMs under NormGlu and HighGlu. Therefore, the reduction in glycolytic reserve may contribute predominately to impaired glycolytic capacity. Glycolytic reserve is an important bioenergy source in response to increases in ATP demand. Our results suggest that long-term HighGlu treatment may limit macrophage energy supply when additional ATP is needed. The LPS-induced proinflammatory macrophages are known to be fuelled by glycolysis [34]. High levels of glycolysis generate NADPH to support NO and ROS production. The reduced glycolytic capacity may explain the lower levels of NO production and impaired bactericidal activity in long-term HighGlu treated macrophages. It may also be related to the reduced phagocytosis of these cells, as we have recently shown that macrophage phagocytic function is directly associated with glycolytic function [35].

## Conclusions

Our study shows that long-term HighGlu sensitizes macrophages to cytokine stimulations, but reduces phagocytosis and bactericidal function of macrophages. The latter may be related to the reduced glycolytic capacity and glycolytic reserve of these cells. Further understanding of the link between altered glucose metabolism and dysregulated macrophage function in diabetes will be important to uncover the immunopathogenesis of diabetic complications.

## Methods

### Animals

C57BL/6 J mice were purchased from Harlan and housed under specific pathogen-free conditions with free access to normal chow and water. Diabetes was induced in 12-week male C57BL/6 J mice by intraperitoneal injection

of streptozotocin (STZ) at 50 mg/kg for 5 consecutive days [36]. Non-fasting glucose level was measured 1 week after the last injection; mice with glucose level over 13 mmol/l were considered diabetic. If the glucose level was reversed back to normal within 2 months after STZ injection, the mice were considered as ex-diabetic. Body weight was monitored monthly (Additional file 2: Figure S2). Mice were sacrificed 3 months after STZ injection and peritoneal macrophages were harvested from diabetic mice ( $n = 3$ ), age-matched controls ( $n = 3$ ) and ex-diabetic mice ( $n = 3$ ). Mice were euthanized by exposure to CO<sub>2</sub>. All animal procedures were approved by the UK Home Office under the Home Office Animal Act (1986) (PPL 2773).

### Bone marrow-derived macrophage culture

Bone marrow derived macrophages (BMDMs) were cultured from 8 to 12-week-old C57BL/6 J mice using a protocol described previously [37]. Briefly, bone marrow cells were cultured in complete DMEM (Thermo Fisher Scientific, Waltham, Massachusetts, USA) supplemented with 10% heat-inactivated foetal bovine serum (FBS) and 20% L929-conditioned media as a source of macrophage colony-stimulating factor (M-CSF) [37]. The phenotype of BMDMs was confirmed by flow cytometry as being F4/80<sup>+</sup> and CD11b<sup>+</sup> (data not shown).

### High glucose treatment of BMDMs

Three types of culture media were used in the *in vitro* studies: normal glucose DMEM (NormGlu), high glucose DMEM (HighGlu), osmolarity control (Mannitol) medium. NormGlu is the standard DMEM (5.5 mM glucose, Thermo Fisher Scientific). HighGlu is the standard DMEM supplemented with additional 25 mM glucose. Previous studies have used glucose concentration ranging from 25 to 40 mM to mimic diabetic condition in cell cultures [38, 39]. Osmolarity control medium (Mannitol) is the standard DMEM supplemented with 25 mM Mannitol [40]. BMDMs were treated for short-term (24 h) or long-term (7 days). Figure 7 shows the experimental design and work flow.

### Short-term treatment

BMDMs were generated from bone marrow cells under NormGlu condition. The cells were collected on day 7 and plated in 12- or 96-well plates with NormGlu, HighGlu or Mannitol for further investigations.

### Long-term treatment

BMDMs were generated under NormGlu, HighGlu or Mannitol conditions. On day 7, cells were harvested and plated in 12- or 96-well plates for further investigations.



using Superscript II Reserve Transcriptase (Thermo Fisher Scientific) with random primers (Thermo Fisher Scientific) following the manufacturer's instructions. QRT-PCR was performed using the LightCycler 480 SYBR Green Master Mix (Roche). The primer sequences used in the study are shown in Table 1. Relative gene expression was normalised to 18S ribosomal RNA (Rn18s) using the  $2^{-\Delta\Delta CT}$  method.

#### Flow cytometric analysis

Single-cell suspensions were stained for cell surface markers using specific antibodies following protocols published previously [43]. All samples were analysed using a FACS Canto II (BD biosciences, UK) and data were processed using FlowJo Software (version 7 for Windows, Tree Star, Ashland, OR, USA). The following antibodies were used: F4/80 (clone: BM8, Thermo Fisher Scientific), CD16/32 (clone: 2.4G2, Thermo Fisher Scientific); CD36 (clone: HM36, Biolegend, San Diego, California, USA), CD206 (clone: C068C2, Biolegend).

#### Macrophage phagocytosis

Phagocytosis was conducted using the pHrodo *S. aureus* bioparticles conjugated phagocytosis kit (Thermo Fisher Scientific) following the manufacturer's instructions [35]. Briefly, BMDMs or peritoneal macrophages were seeded onto 96-well black-walled plates at a density of  $5 \times 10^4$  per well for 24 h before adding the bioparticles. Culture

medium with bioparticles only was served as a negative control. Fluorescence intensity was measured 1 h, 1.5 h and 2 h after the addition of bioparticles using the Fluostar Omega plate reader (BMG Labtech). The net fluorescence intensity was the difference between the fluorescence intensity from the experimental wells and that from the negative control wells [35].

#### Bacterial killing assays

A colony of *Pseudomonas aeruginosa* PAO1 was selected from a cetrimide agar plate and inoculated into 10 mL of LB broth (Sigma-Aldrich). This was grown overnight at 37 °C in an orbital shaker at 160 rpm. The cells were harvested by centrifugation in an Eppendorf centrifuge 5810R at 4000 rpm for 10 mins and resuspended in 40 ml of fresh LB broth. They were grown to log phase for 4–6 h at 37 °C on a rotary shaker at 160 rpm. The optical density of the bacterial culture was measured at 600 nm (WPA biowave).

To assess their bactericidal activity,  $1 \times 10^6$  BMDMs were plated in 12-well plates. *P. aeruginosa* was added to the wells at multiplicity of infection (MOI) 1:10 ( $1 \times 10^7$  CFU/ml). The BMDM/*P. aeruginosa* co-culture was incubated for 1 h at 37 °C. The coculture was then centrifuged at 1500 rpm for 5 min and the supernatant removed. The supernatant was serial diluted in PBS at  $10^{-4}$ ,  $10^{-5}$ ,  $10^{-6}$  and  $10^{-7}$  and plated onto cetrimide agar (Sigma-Aldrich). Saponin (Sigma-Aldrich) at 1:1000 dilution in PBS was added to all pellets and incubated for 5 min. The digested pellets were serial diluted in PBS at  $10^{-4}$ ,  $10^{-5}$ ,  $10^{-6}$  and  $10^{-7}$  and plated onto cetrimide agar. All cetrimide plates were incubated for 18 h and CFU/mL were then calculated.

**Table 1** Primers used for RT-PCR

Name	Forward	Reverse
Arg-1	TTATCGGAGCGCCTTTCTCAA	TGGTCTCTCACGCATAC CTCTGT
IFN $\gamma$ R1	GGTTGCTCCTCTTACCGTCT	GTGCGGTGTGACAAGT GAAT
IFN $\gamma$ R2	TGCTTACCCTGTTCTCTCAA	CTGGTTCACGGTGTTTG GAG
IL-10	TGCAGGACTTTAAGGGTTA CTTGG	GGCCTTGTAGACACCTT GGTC
IL-12p40	GACATCATCAAACCAGACC CGCC	GCCTTTCATTGGACTT CGGT
IL-1 $\beta$	TCCTTGTGCAAGTGTCTGA AGC	ATGAGTGATACTGCCT GCCTGA
IL4ra	TGGCTGCTGACCTGGAA TAA	TCAGCCTGGGTTCTTT GTAG
IL-6	TCTGCAAGAGACTTCCAT CCAGT	TCTGCAAGTGCATCATCGTTG
iNOS	GGCAAACCCAAGGTCTA CGTT	TCGCTCAAGTTCAGCTTGGT
Rn18s	AGGGGAGAGCGGGTAA GAGA	GGACAGGACTAGCGGAACA
TLR-4	TCCTGGCTAGGACTCTG ATCAT	TCCAGCCACTGAAGTTCTGA
TNF $\alpha$	GCCTCTTCTATTCTGCTT	CTCCTCCACTTGGTGGTTTG

#### Bioenergetic profile of BMDMs

BMDMs metabolic profiles were assessed using Seahorse XF Glycolysis Stress Test kit and Cell Mito Stress Test kit with a Seahorse XFe96 Analyzer (Agilent Technologies) following manufacturer's instructions. Glycolytic activities were assessed by measuring the Extracellular Acidification Rates (ECAR) and mitochondrial activities were assessed by measuring the Oxygen Consumption Rates (OCR). Data were normalised with the total cell number and expressed as mpH/min/ $10^4$  cells for ECAR or pmol/min/ $10^4$  cell for OCR.

#### Statistical analysis

Data were presented as mean  $\pm$  standard error (SEM). Unpaired, two-tailed Student's t test was used for two-group comparisons. One-way ANOVA was used to compare the means of multiple groups; Tukey's multiple comparisons were used for post hoc test when samples had equal variances. Student t test with Welch's correction was employed when the equal variance assumption was not met.  $P < 0.05$  was considered statistically significant.

## Additional files

**Additional file 1: Figure S1.** Phagocytosis of BMDMs exposed to short-term HighGlu. Bone marrow cells were differentiated under NormGlu and then exposed to HighGlu for 24 h. Phagocytosis was assessed using pHrodo *S. aureus* bioparticles. Data are represented as mean  $\pm$  SEM. Two-way ANOVA with bonferroni correction was performed. (TIF 257 kb)

**Additional file 2: Figure S2.** Body weights of control and diabetic (DM) mice, before and after STZ injections. Mice were weighted (time point 0) and STZ (50 mg/kg) was injected for 5 consecutive days. One week after the last STZ injection (time point 1), mice had elevated blood glucose levels (diabetic-DM). Weights were monitored every 4 weeks until the end of the experiment. Data are represented as mean  $\pm$  SEM. Two-way ANOVA with bonferroni correction was performed; \*\*\*  $p < 0.001$ . (TIF 256 kb)

### Abbreviations

ATP: Adenosine triphosphate; BMDMs: Bone marrow derived macrophages; ECAR: Extracellular acidification rate; HighGlu: High glucose (30.5 mM); NormGlu: Normal glucose (5.5 mM); OCR: Oxygen consumption rate; ROS: Reactive oxygen species; STZ: Streptozotocin

### Acknowledgements

We thank Kevin Harkin for proof reading and providing helpful comments on the manuscript.

### Funding

This work was supported by Fight for Sight UK (1574/75), Diabetes UK (16/0005537).

### Availability of data and materials

The datasets used and/or analysed during the current study are available from the corresponding author on reasonable request.

### Authors' contributions

SP and JL performed experiments. RI contributed to the study design. HX contributed to the study design and data interpretation. MC oversaw all aspects of the study, including performing experiments, experiment design, data analysis and interpretation and writing of the manuscript. All authors read and approved the final manuscript.

### Ethics approval

Animal procedures (PPL 2773) were approved by the UK Home Office under the Home Office Animal Act (1986).

### Consent for publication

Not applicable.

### Competing interests

The authors declare that they have no competing interests.

## Publisher's Note

Springer Nature remains neutral with regard to jurisdictional claims in published maps and institutional affiliations.

Received: 5 April 2018 Accepted: 4 July 2018

Published online: 11 July 2018

### References

- Tesch GH. Role of macrophages in complications of type 2 diabetes. *Clin Exp Pharmacol Physiol*. 2007;34(10):1016–9.
- Serra AM, Waddell J, Manivannan A, Xu H, Cotter M, Forrester JV. CD11b+ bone marrow-derived monocytes are the major leukocyte subset responsible for retinal capillary leukostasis in experimental diabetes in mouse and express high levels of CCR5 in the circulation. *Am J Pathol*. 2012;181(2):719–27.
- Barouch FC, Miyamoto K, Allport JR, Fujita K, Bursell SE, Aiello LP, et al. Integrin-mediated neutrophil adhesion and retinal leukostasis in diabetes. *Invest Ophthalmol Vis Sci*. 2000;41(5):1153–8.
- Tang J, Kern TS. Inflammation in diabetic retinopathy. *Prog Retin Eye Res*. 2011;30(5):343–58.
- Fornoni A, Ijaz A, Tejada T, Lenz O. Role of inflammation in diabetic nephropathy. *Curr Diabetes Rev*. 2008;4(1):10–7.
- Wicks K, Torbica T, Mace KA. Myeloid cell dysfunction and the pathogenesis of the diabetic chronic wound. *Semin Immunol*. 2014;26(4):341–53.
- Van den Bossche J, O'Neill LA, Menon D. Macrophage Immunometabolism: where are we (going)? *Trends Immunol*. 2017;38(6):395–406.
- Palsson-McDermott EM, Curtis AM, Goel G, Lauterbach MA, Sheedy FJ, Gleeson LE, et al. Pyruvate kinase M2 regulates Hif-1alpha activity and IL-1beta induction and is a critical determinant of the Warburg effect in LPS-activated macrophages. *Cell Metab*. 2015;21(1):65–80.
- Tannahill GM, Curtis AM, Adamik J, Palsson-McDermott EM, McGettrick AF, Goel G, et al. Succinate is an inflammatory signal that induces IL-1beta through HIF-1alpha. *Nature*. 2013 Apr 11;496(7444):238–42.
- Scholzen T, Gerdes J. The Ki-67 protein: from the known and the unknown. *J Cell Physiol*. 2000;182(3):311–22.
- O'Neill LA, Pearce EJ. Immunometabolism governs dendritic cell and macrophage function. *J Exp Med*. 2016;213(1):15–23.
- Xu H, Chen M. Diabetic retinopathy and dysregulated innate immunity. *Vis Res*. 2017;139:39–46.
- Oikawa A, Siragusa M, Quaini F, Mangialardi G, Katare RG, Caporali A, et al. Diabetes mellitus induces bone marrow microangiopathy. *Arterioscler Thromb Vasc Biol*. 2010;30(3):498–508.
- Hazra S, Jarajapu YP, Stepps V, Caballero S, Thinschmidt JS, Sautina L, et al. Long-term type 1 diabetes influences haematopoietic stem cells by reducing vascular repair potential and increasing inflammatory monocyte generation in a murine model. *Diabetologia*. 2013;56(3):644–53.
- Mooradian AD, Reed RL, Meredith KE, Scuderi P. Serum levels of tumor necrosis factor and IL-1 alpha and IL-1 beta in diabetic patients. *Diabetes Care*. 1991;14(1):63–5.
- Ohno Y, Aoki N, Nishimura A. In vitro production of interleukin-1, interleukin-6, and tumor necrosis factor-alpha in insulin-dependent diabetes mellitus. *J Clin Endocrinol Metab*. 1993;77(4):1072–7.
- Frasnelli SC, de Medeiros MC, Bastos Ade S, Costa DL, Orrico SR, Rossa Junior C. Modulation of immune response by RAGE and TLR4 signalling in PBMCs of diabetic and non-diabetic patients. *Scand J Immunol*. 2015;81(1):66–71.
- Sharma JN, Al-Omran A, Parvathy SS. Role of nitric oxide in inflammatory diseases. *Inflammopharmacology*. 2007;15(6):252–9.
- Coleman JW. Nitric oxide in immunity and inflammation. *Int Immunopharmacol*. 2001;1(8):1397–406.
- MacMicking J, Xie QW, Nathan C. Nitric oxide and macrophage function. *Annu Rev Immunol*. 1997;15:323–50.
- Aktan F. iNOS-mediated nitric oxide production and its regulation. *Life Sci*. 2004;75(6):639–53.
- Tseng CC, Hattori Y, Kasai K, Nakanishi N, Shimoda S. Decreased production of nitric oxide by LPS-treated J774 macrophages in high-glucose medium. *Life Sci*. 1997;60(7):PL99–106.
- EI-Mahmoudy A, Shimizu Y, Shiina T, Matsuyama H, Nikami H, Takewaki T. Macrophage-derived cytokine and nitric oxide profiles in type I and type II diabetes mellitus: effect of thymoquinone. *Acta Diabetol*. 2005;42(1):23–30.
- de Souza LF, Barreto F, da Silva EG, Andrades ME, Guimaraes EL, Behr GA, et al. Regulation of LPS stimulated ROS production in peritoneal macrophages from alloxan-induced diabetic rats: involvement of high glucose and PPARgamma. *Life Sci*. 2007;81(2):153–9.
- O'Brien BA, Huang Y, Geng X, Dutz JP, Finegood DT. Phagocytosis of apoptotic cells by macrophages from NOD mice is reduced. *Diabetes*. 2002;51(8):2481–8.
- Maree AF, Komba M, Finegood DT, Edelstein-Keshet L. A quantitative comparison of rates of phagocytosis and digestion of apoptotic cells by macrophages from normal (BALB/c) and diabetes-prone (NOD) mice. *J Appl Physiol* (1985). 2008;104(1):157–69.
- O'Brien BA, Geng X, Orteu CH, Huang Y, Ghoreishi M, Zhang Y, et al. A deficiency in the in vivo clearance of apoptotic cells is a feature of the NOD mouse. *J Autoimmun*. 2006;26(2):104–15.
- Reddy MA, Chen Z, Park JT, Wang M, Lanting L, Zhang Q, et al. Regulation of inflammatory phenotype in macrophages by a diabetes-induced long noncoding RNA. *Diabetes*. 2014;63(12):4249–61.

29. Bannon P, Wood S, Restivo T, Campbell L, Hardman MJ, Mace KA. Diabetes induces stable intrinsic changes to myeloid cells that contribute to chronic inflammation during wound healing in mice. *Dis Model Mech*. 2013;6(6):1434–47.
30. Dasu MR, Devaraj S, Jialal I. High glucose induces IL-1beta expression in human monocytes: mechanistic insights. *Am J Physiol Endocrinol Metab*. 2007;293(1):E337–46.
31. Quan Y, Jiang CT, Xue B, Zhu SG, Wang X. High glucose stimulates TNFalpha and MCP-1 expression in rat microglia via ROS and NF-kappaB pathways. *Acta Pharmacol Sin*. 2011;32(2):188–93.
32. Cucak H, Grunnet LG, Rosendahl A. Accumulation of M1-like macrophages in type 2 diabetic islets is followed by a systemic shift in macrophage polarization. *J Leukoc Biol*. 2014;95(1):149–60.
33. Freemeran AJ, Johnson AR, Sacks GN, Milner JJ, Kirk EL, Troester MA, et al. Metabolic reprogramming of macrophages: glucose transporter 1 (GLUT1)-mediated glucose metabolism drives a proinflammatory phenotype. *J Biol Chem*. 2014;289(11):7884–96.
34. O'Neill LA, Hardie DG. Metabolism of inflammation limited by AMPK and pseudo-starvation. *Nature*. 2013;493(7432):346–55.
35. Pavlou S, Wang L, Xu H, Chen M. Higher phagocytic activity of thioglycollate-elicited peritoneal macrophages is related to metabolic status of the cells. *J Inflamm (Lond)*. 2017;144. <https://doi.org/10.1186/s12950-017-0151-x>. eCollection 2017
36. McVicar CM, Ward M, Colhoun LM, Guduric-Fuchs J, Bierhaus A, Fleming T, et al. Role of the receptor for advanced glycation endproducts (RAGE) in retinal vasodegenerative pathology during diabetes in mice. *Diabetologia*. 2015;58(5):1129–37.
37. Luo C, Chen M, Madden A, Xu H. Expression of complement components and regulators by different subtypes of bone marrow-derived macrophages. *Inflammation*. 2012;35(4):1448–61.
38. Simone S, Gorin Y, Velagapudi C, Abboud HE, Habib SL. Mechanism of oxidative DNA damage in diabetes: tuberin inactivation and downregulation of DNA repair enzyme 8-oxo-7,8-dihydro-2'-deoxyguanosine-DNA glycosylase. *Diabetes*. 2008;57(10):2626–36.
39. Kim SH, Kim SH, Choi M, Lee Y, Kim YO, Ahn DS, et al. Natural therapeutic magnesium lithospermate B potently protects the endothelium from hyperglycaemia-induced dysfunction. *Cardiovasc Res*. 2010;87(4):713–22.
40. Cai L, Li W, Wang G, Guo L, Jiang Y, Kang YJ. Hyperglycemia-induced apoptosis in mouse myocardium: mitochondrial cytochrome C-mediated caspase-3 activation pathway. *Diabetes*. 2002;51(6):1938–48.
41. Mosmann T. Rapid colorimetric assay for cellular growth and survival: application to proliferation and cytotoxicity assays. *J Immunol Methods*. 1983;65(1–2):55–63.
42. Chen M, Muckersie E, Robertson M, Fraczek M, Forrester JV, Xu H. Characterization of a spontaneous mouse retinal pigment epithelial cell line B6-RPE07. *Invest Ophthalmol Vis Sci*. 2008;49(8):3699–706.
43. Chen M, Forrester JV, Xu H. Dysregulation in retinal Para-inflammation and age-related retinal degeneration in CCL2 or CCR2 deficient mice. *PLoS One*. 2011;6(8):e22818.

Ready to submit your research? Choose BMC and benefit from:

- fast, convenient online submission
- thorough peer review by experienced researchers in your field
- rapid publication on acceptance
- support for research data, including large and complex data types
- gold Open Access which fosters wider collaboration and increased citations
- maximum visibility for your research: over 100M website views per year

At BMC, research is always in progress.

Learn more [biomedcentral.com/submissions](https://biomedcentral.com/submissions)

