

Fanconi Anemia complementation group C protein in metabolic disorders

Manoj Nepal^{1,2}, Chi Ma¹, Guoxiang Xie¹, Wei Jia¹, Peiwen Fei^{1,2}

¹University of Hawaii Cancer Center, Honolulu, HI 96813, USA

²Graduate Program of Molecular Biosciences and Bioengineering, University of Hawaii, Honolulu, HI 96822, USA

Correspondence to: Peiwen Fei; email: pfei@hawaii.edu

Keywords: cancer, aging, metabolites, inflammation, diabetes, Fanconi Anemia (FA)

Received: April 12, 2018 **Accepted:** June 16, 2018 **Published:** June 21, 2018

Copyright: Nepal et al. This is an open-access article distributed under the terms of the Creative Commons Attribution License (CC BY 3.0), which permits unrestricted use, distribution, and reproduction in any medium, provided the original author and source are credited.

ABSTRACT

Given importance of 22-Fanconi Anemia (FA) proteins together to act in a signaling pathway in preventing deleterious clinical symptoms, e.g. severe bone marrow failure, congenital defects, an early onset of aging and cancer, studies on each FA protein become increasingly attractive. However, an unbiased and systematic investigation of cellular effects resulting from each FA protein is missing. Here, we report roles of FA complementation C group protein (FANCC) in the protection from metabolic disorders. This study was prompted by the diabetes-prone feature displayed in FANCC knockout mice, which is not typically shown in patients with FA. We found that in cells expressing FANCC at different levels, there are representative alterations in metabolites associated with aging (glycine, citrulline, ornithine, L-asparagine, L-tyrosine, L-arginine, L-glutamine, L-leucine, L-isoleucine, L-valine, L-proline and L-alanine), Diabetes Mellitus (DM) (carbon monoxide, collagens, fatty acids, D-glucose, fumaric acid, 2-oxoglutaric acid, C3), inflammation (inosine, L-arginine, L-isoleucine, L-leucine, L-lysine, L-phenylalanine, hypoxanthine, L-methionine), and cancer (L-methionine, sphingomyelin, acetyl-L-carnitine, L-aspartic acid, L-glutamic acid, niacinamide, phospho-rylethanolamine). We also found that FANCC can act in an FA-pathway-independent manner in tumor suppression. Collectively, featured-metabolic alterations are readouts of functional mechanisms underlying reduced tumorigenicity driven by FANCC, demonstrating close links among cancer, aging, inflammation and DM.

INTRODUCTION

Aided by new biochemical and molecular biological tools, studies in cancer cell metabolism have expanded the understanding of the mechanisms and functional consequences of tumor-associated metabolic alterations at various stages of tumorigenesis. In particular, these alterations can affect the metabolite influx through conferring an increased ability to acquire the necessary nutrients. They can also shape the manner the nutrients are preferentially assigned to metabolic pathways, which ultimately contribute to and lead to long-ranging effects on cellular fates [1]. Alterations in various meta-

bolites also cause illnesses, such as diabetes [2] and inflammation [2], that ultimately contribute to the high incidence of cancer. During the past decade it became clear that inflammation is a key feature of obesity and type 2 diabetes [3]. Obesity is associated with an array of additional health problems, including an increased risk of insulin resistance, type 2 diabetes, fatty liver disease, atherosclerosis, degenerative disorders including dementia, airway diseases and cancers [4].

Fanconi anemia (FA), a rare human genetic disease that affects approximately 1–3 of 500000 newborns [5], is characterized by a broad spectrum of congenital

abnormalities such as an early onset of aging, short stature; abnormalities of the skin, arms, head, eyes, and kidneys; bone marrow failure; a predisposition to hematological and solid malignancies. Cells derived from FA patients are featured with spontaneous and induced chromosomal breakages and very sensitive to DNA damage agents [6-8]. To date, twenty-two FA genes including FANCA, -B, -C, -D1, -D2, -E, -F, -G, -I, -J, -L, -M, -N, -O, -P, -Q, -R, -S, -T, -U, -V and -W have been identified [7-11]. These twenty-two FA genes encoded proteins are involved in a common signaling pathway (namely the FA pathway), which is activated upon DNA damage or during DNA synthesis [8, 12, 13]. Therefore, the absence or dysfunction of any one of these proteins can drastically reduce DNA repair efficiency or affecting DNA replication [6, 8]. When this process is impaired, an accumulation of chromosomal breakage occurs, leading to genomic instability, aging, and, ultimately, cancer [14]. However, it is not clear whether defected FA genes can contribute to the onset of obesity, diabetes and/or inflammation, which are known of being closely related to cancer [3, 4].

Recently, we reported that FAVL impaired FA pathway contributes to bladder cancer development at the metabolic level [15]. Those studies we did previously [16, 17] hold a profound implication of functional and genetic evidences that the FA pathway performs tumor suppressor functions in cancer patients without FA, which are now extended to the exciting field of metabolomics as a result of what we recently reported [15]. In this study, we continued this new niche of metabolomics studies on FA signaling research by demonstrating how FANCC affects metabolism in a system with a defected FA signaling pathway. This was incited by the unique diabetes-prone phenotype displayed by FANCC-knockout mice [18], which is not a typical phenotype associated with FA. We found metabolites driven by FANCC are associated not only with cancer or aging but also clearly with inflammation and diabetes, which are certainly part of mechanisms for reduced tumorigenicity initiated by FANCC. Our study provides the first snapshot of all cellular processes initiated from FANCC, suggesting distinct connections among inflammation, DM, aging and cancer.

RESULTS

Establishment of cells expressing different levels of FANCC, which can modulate tumorigenicity

Metabolomics study has become a powerful aspect of research to further our understanding of the basic, biological mechanisms underlying obesity, diabetes, stroke or cancer [19]. In the recognition of the diabetes-

prone phenotype in FANCC knockout mice [18], that is not a typical clinical complication shown in FA, we decided to metabolically probe the function of FANCC to broaden the knowledge learned from FA. To avoid the influence of the FA signaling pathway and to systematically study the unique chemical fingerprints driven by FANCC only, we chose cells that carry an impaired FA pathway and also are easily to be built into the corresponding derivative cells to express FANCC at different levels. As shown in Figure 1A and Figure S1A and B, MDA-MB-231 and its derivative cells were validated with an undetectable level of FANCI expression, agreed with the absence of normal chromosome 15 (ATCC) where FANCI locus is located. Therefore, MDA-MB-231 cells essentially carry a non-functioning FA pathway in regards to the fact that FANCI is a partner of FANCD2 to work at the center of the FA signaling pathway [7, 20]. FANCC-high or low expression cells were subsequently established from MDA-MB-231 cell line (Figure 1B). Interestingly, the expression level of FANCC protein is relatively low in MDA-MB-231 cells compared to the cell lines detected (Figure 1A). This background of MDA-MB-231 cells may have also conferred the effects driven by the ectopically expressed FANCC. Indeed, those FANCC-high cells proliferated relatively slow, formed less number of colonies in soft agar, and carried a reduced migration capacity (Figure 1C, D, and Figure S1C, D), suggesting that FANCC can reduce the tumorigenicity of MDA-MB-231 cells.

FANCC-driven metabolomes

Using targeted (UPLC-MS/MS) and untargeted (GC-TOFMS) metabolomics analysis, we determined the metabolite alteration within the set of MDA-MB-231 cells expressing FANCC at different levels (Figure 1B). A total of 205 metabolites were found to be altered significantly between FANCC-high and FANCC-low cells (Table S1). Principal component analysis (PCA) showed a clear separation between empty vector control/FANCC-low and FANCC-high cell groups, providing the evidence that FANCC changes metabolomes (Figure 2A). Heat map made of 29 metabolites (randomly picked up from 205) shows a vivid difference in the metabolomes of two cell groups (Figure 2B): blue color of metabolites indicates reduced metabolites in the metabolomes of cells; while red color indicates those elevated metabolites. Therefore, FANCC at least performs biological functions that can ultimately lead to the changes of 205 metabolites, which are a better output to tell the occurred cellular processes initiated by FANCC, in an FA pathway-independent manner.

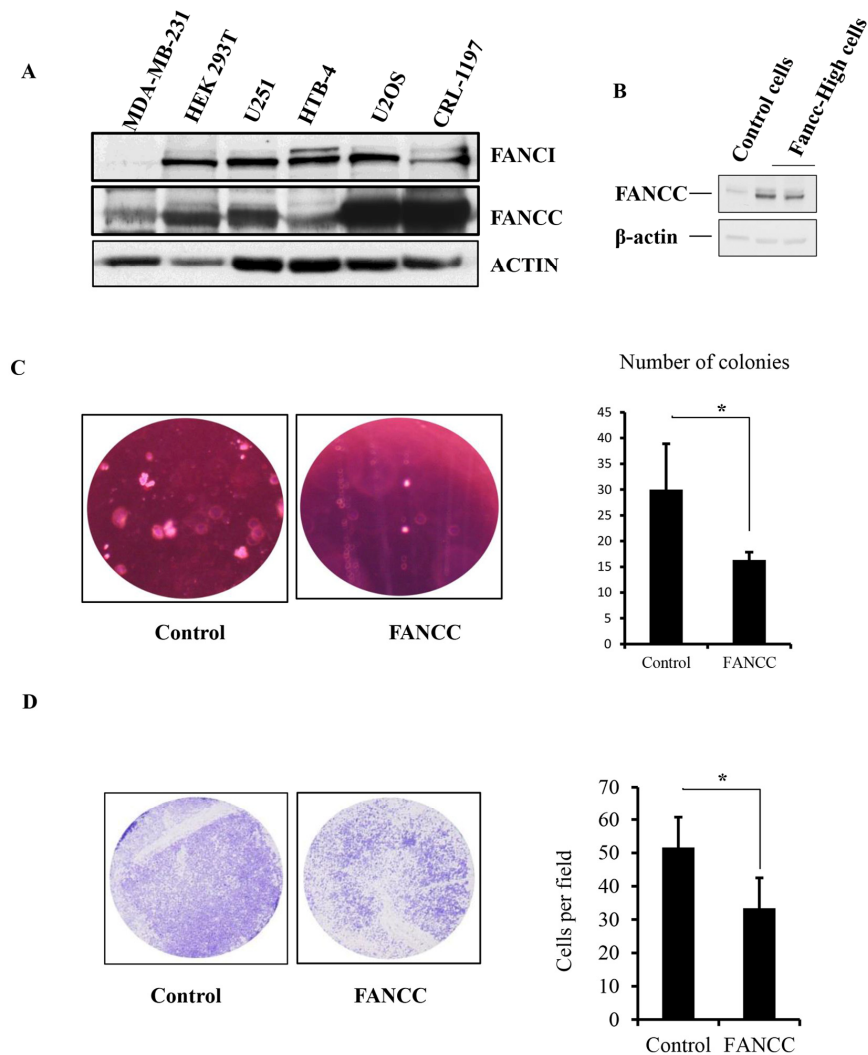


Figure 1. Generation of a study system with FA-signaling-defective cells. (A) MDA-MB-231 cells do not have the endogenous expression of FANCI, but have a relatively low level of FANCC expression. We examined the expression of FANCI and FANCC by western blotting in MDA-MB-231, HEK 293T, U2OS, CRL-1197, HTB-4, and U251 cells, among which the level of FANCI protein expression is undetectable in MDA-MB-231 cells. However, the level of FANCC expression was low compared to the other cells detected. (B) Ectopic expression of FANCC in MDA-MB-231 cells. Cells were transfected with empty vectors for control or plasmids carrying FANCC cDNA. The level of FANCC was detected accordingly by western blotting in pool-selected two groups of cells. These derivatives of MDA-MB-231 express FANCC at a low or high level (namely FANCC-low or -high cells). (C) Number of colonies derived from FANCC-high cells is reduced compared to FANCC-low cells. Colony formation of FANCC-high or low cells was determined by the soft agar assay. The number of colonies was counted and showed significantly different between two groups ($p < 0.001$). (D) FANCC-high cells have a reduced capacity for migration. Both cell images and numbers of migrated cells showed that FANCC can decrease the capacity of MDA-MB231 cell migration. The number of migrated cells was counted and showed significantly different between two groups ($p < 0.001$).

Involvement of FANCC in multi-aspects of cellular processes

To investigate the roles of metabolite alterations triggered by FANCC in the diseases with metabolite dysfunction such as diabetes, inflammation and cancer, we performed molecular pathway and network analyses using Ingenuity Pathway Analysis (IPA). We found that

inosine, hypoxanthine, pyrophosphate, L-asparagine, L-phenylalanine, acetyl-L-carnitine, beta-alanine, glutaryl-carnitine, niacinamide and creatinine significantly went up in FANCC-high cells compared to FANCC-low cells. IPA revealed that tRNA (19/43), Super pathway of citrulline Metabolism (9/24), Arginine Biosynthesis IV (5/7), Asparagine Biosynthesis (7/18) and Urea cycle (6/14) were the five most significantly altered pathways

in cells expressing FANCC at a higher level compared to the control cells (FANCC-low cells) (Figure S2 and Tables S1 and S2). Furthermore, we found that different metabolites are involved in different types of cellular functions. Among all metabolites, 34% are involved in cellular compromise, lipid metabolism, small molecular biochemistry, 23% are found to be involved in amino acid metabolism, molecular transport. Similarly, 22% are associated with nucleic acid metabolism, 18% is in cellular movement and 3% is related to cellular growth proliferation, organism development, injury and abnormalities (Figure S3 and Table S3). These results provide information suggesting FANCC is related to different diseases by regulating different molecular and cellular functions.

Functional pathways initiated from FANCC

To analyze the specific relations of metabolites in the cells with FANCC potentially for different diseases, we uploaded the identified 205 metabolites to the IPA for functional analysis. For the robustness of the IPA, we

normalized metabolic data as described previously [21] on the basis of a total number of cells prepared for the profiling. The metabolic functions (canonical pathways, disease and Bio-functions, molecular and cellular functions, physiological system development and functions, clinical chemistry and hematology, cardiotoxicity, hepatotoxicity and nephrotoxicity) are summarized in Tables S1 and S2. The most significant, biological functions associated with FANCC were cancer ($p=4.39 \times 10^{-02} - 5.93 \times 10^{-14}$, 30 metabolites), inflammatory disease ($p=3.67 \times 10^{-02} - 3.39 \times 10^{-07}$, 7 metabolites) gastrointestinal disease ($p=4.39 \times 10^{-02} - 5.93 \times 10^{-14}$, 28 metabolites), organismal injury and abnormalities ($p=4.4 \times 10^{-02} - 3.39 \times 10^{-07}$, 36 metabolites) amino acid metabolism ($p=3.89 \times 10^{-02} - 2.43 \times 10^{-10}$, 21 metabolites) and liver inflammation/Hepatitis ($p=3.03 \times 10^{-01} - 3.67 \times 10^{-02}$, 3 metabolites). All of these processes relatively went down owing to the higher expression of FANCC in comparison with FANCC-low cells. The five significant biological processes were cellular growth and proliferation (30 metabolites), amino acid metabolism (21 metabolites),

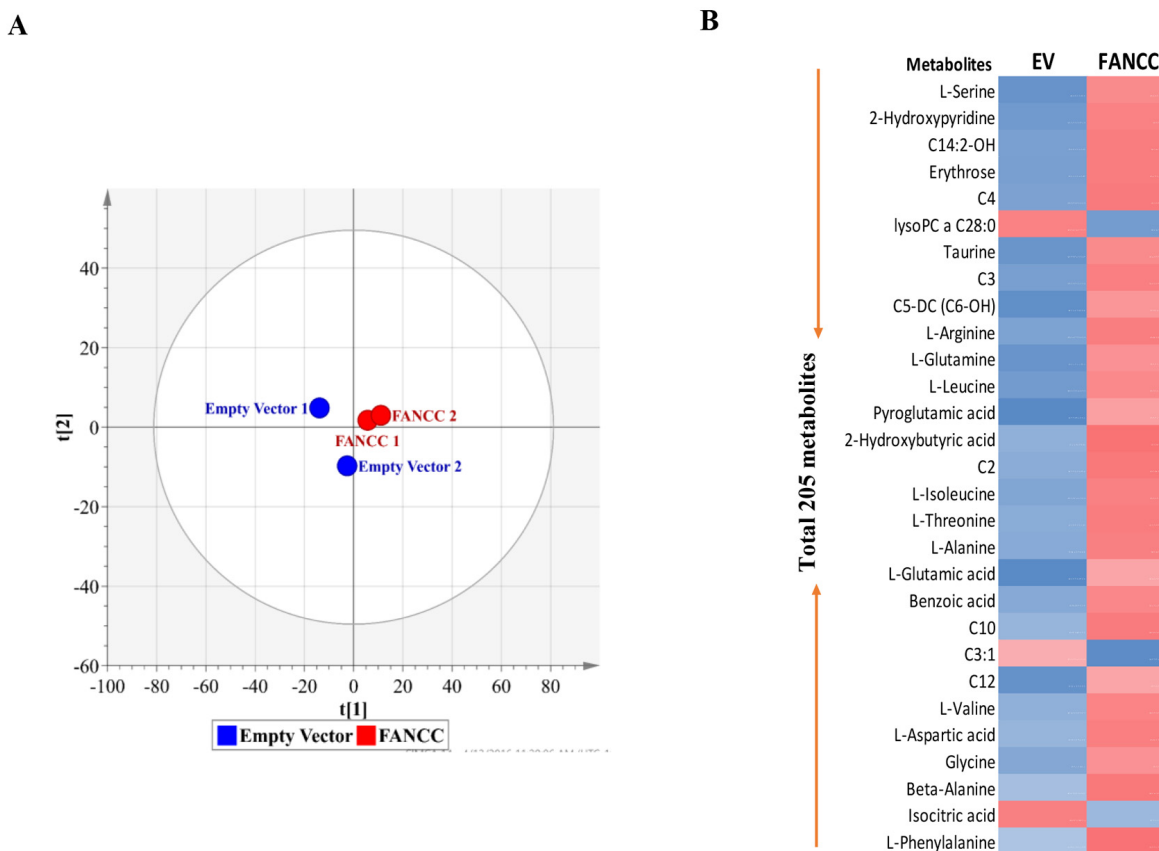
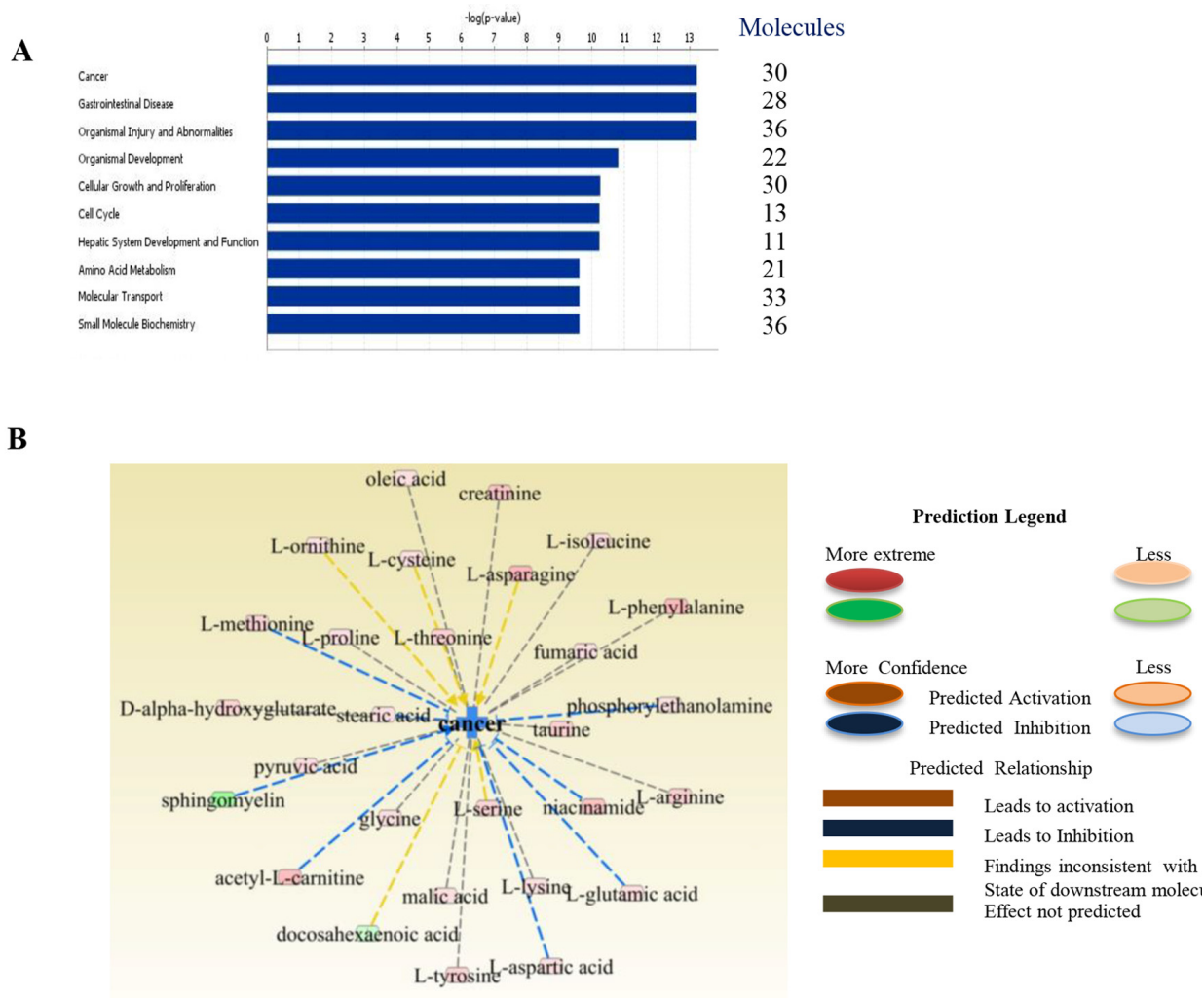


Figure 2. Metabolically profiling of FANCC-high or low cells. (A) OPLS-DA score plots of metabolic profiles were derived from the data of GC-TOMS, which were generated from FANCC-high or low cells. (B) The heat-map for the intensity variations of the total metabolites identified with GC-TOFMS and UPLC-MS/MS. Blue or red color indicates reduced or elevated levels of the metabolites respectively in FANCC-high cells compared to FANCC-low cells.

molecular transport (33 metabolites), Small Molecule Biochemistry (36 metabolites) and cell cycle (13 metabolites). We also determined the most elevated molecules that are inosine, hypoxanthine, pyrophospho-

phate, L-asparagine, L-phenylalanine, acetyl-L-carnitine, niacinamide, glutaryl carnitine, and creatinine. These metabolites are involved in the suppression of cancer, inflammation as well as diabetes.



Elevated metabolites in FANCC-high cells	The reduced levels of metabolites (in FANCC-high cells)	Elevated Metabolites are outcomes of inhibitory forces to Cancer (6)	Predicted Inhibition
28	Docosahexaenoic acid, sphingomyelin	L-methionine, Acetyl-L-carnitine, L-aspartic acid, L-glutamic acid, Niacinamide, Phosphorylethanolamine	23

Figure 3. Metabolic functions and integrative molecular modeling for different diseases. (A) Top networks of metabolite markers, associated with molecular and cellular functions, were determined to be readouts of reduced cell signaling processes that are essentially to cancer and many specific disorders (gastrointestinal disease, organismal injury and abnormalities and others). (B) Altered metabolites were associated with cancer in FANCC-high cells in comparison with FANCC-low cells. The pink color-indicated metabolites (L-methionine, acetyl-L-carnitine, L-aspartic acid, L-glutamic acid, niacinamide and phosphorylethanolamine) were found to be elevated, which were the products of cancer inhibitory processes. Two metabolites labeled with green color were found to be lower, which were the end chemical substances of cancer promoting cellular processes. As summarized in the table shown at the bottom, 28 out of 30 metabolites were elevated in FANCC-high cells, and two were present at a lower level. Among 28 metabolites, 7 metabolites were known to be the readouts of cancer inhibitory cellular processes, and the rest of 23 were predicted to be in the inhibitory processes to cancer.

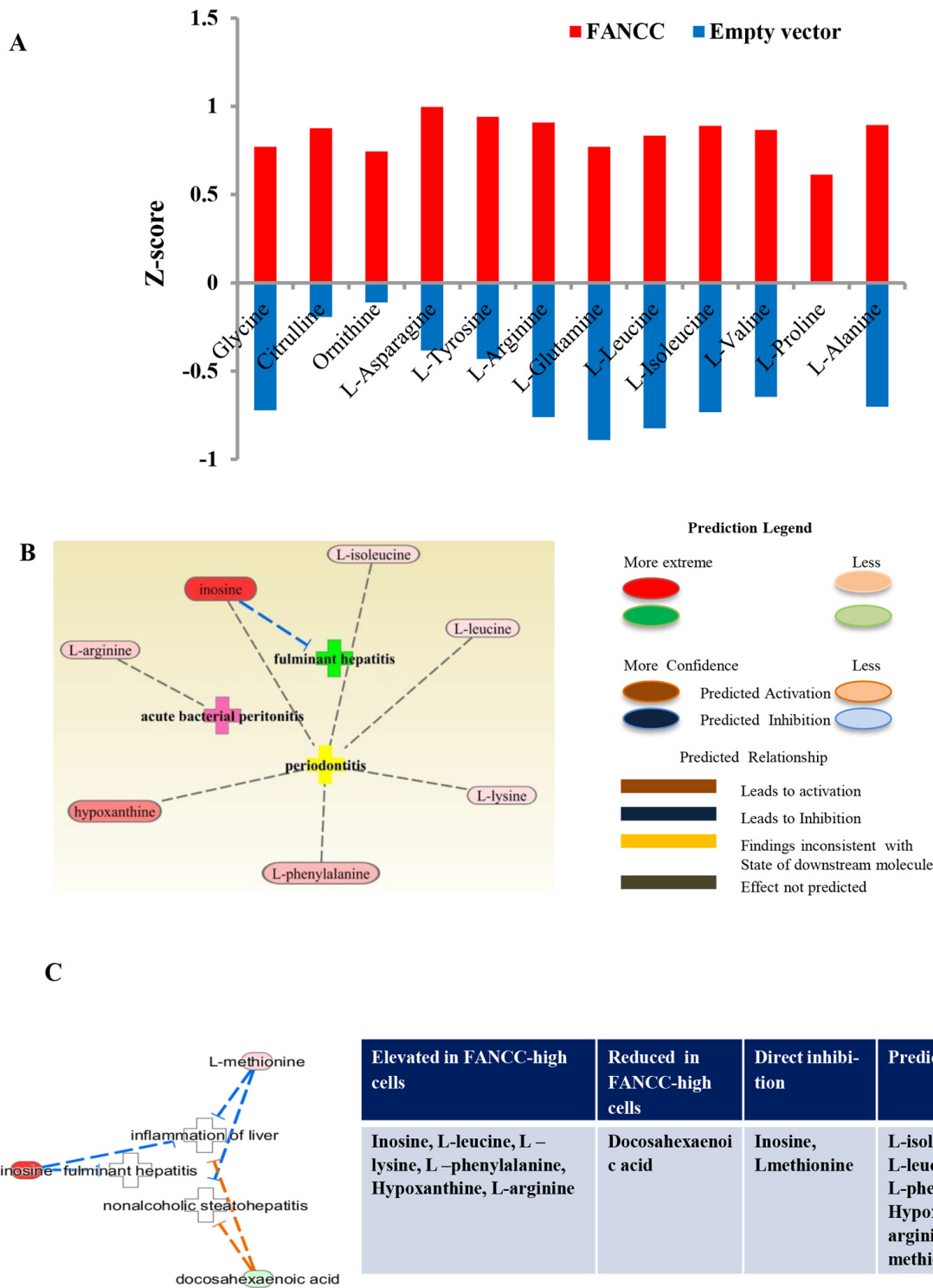


Figure 4. Metabolic indication of FANCC functions in aging and inflammation. (A) Aging associated metabolites were altered in FANCC-high cells. Metabolites of aging inhibitory processes were significantly elevated in FANCC-high cells. Glycine, citrulline, ornithine, L-asparagine, L-tyrosine, L-arginine, L-glutamine, L-leucine, L-isoleucine, L-valine, L-alanine and L-proline were elevated in FANCC –high cells compared to FANCC-low cells. (B, C) Metabolites involved in inflammatory diseases: The most significantly differential network for inflammatory diseases, such as periodontitis, fulminant hepatitis and inflammation of liver, was indicated by the altered metabolites in FANCC-high cells. Inosine, L-isoleucine, L-leucine, L-lysine, l-phenylalanine, hypoxanthine and L-arginine were elevated in FANCC cells, which were involved in the inflammatory-inhibition processes and etc., as listed in the table shown at the side.

Altered metabolites involved in cancer, inflammation, aging and DM

Continuing our metabolomics studies [15] on the roles of the FA signaling pathway in human tumorigenesis, we here focused on an individual FA protein and studied the pathway-free roles of FANCC in a unique cell system in which the FA pathway is deficient (Figure 1). Using IPA analysis, we found that cells with ectopically expressed FANCC carried either elevated metabolites that are outcomes of tumor inhibitory forces, or the decreased metabolites that are driven by oncogenic

potentials. Overall, the cancer promotion signaling was prohibited as shown in red color in FANCC-high cells compared with FANCC-low cells. Other listed pathways were found to be similar mitigated (Figure 3A). Specifically, we found that 30 metabolites were specifically involved in cancer (Figure 3B). Among these metabolites, docosahexaenoic acid [22] and sphingomyelin [23] were shown at a reduced level in FANCC-high cells, which are indicative of the cellular processes that promote cancer development. While L-methionine [24], acetyl-L-carnitine [25], L-aspartic acid [26], L-glutamic acid [27], niacinamide [28] and phos-

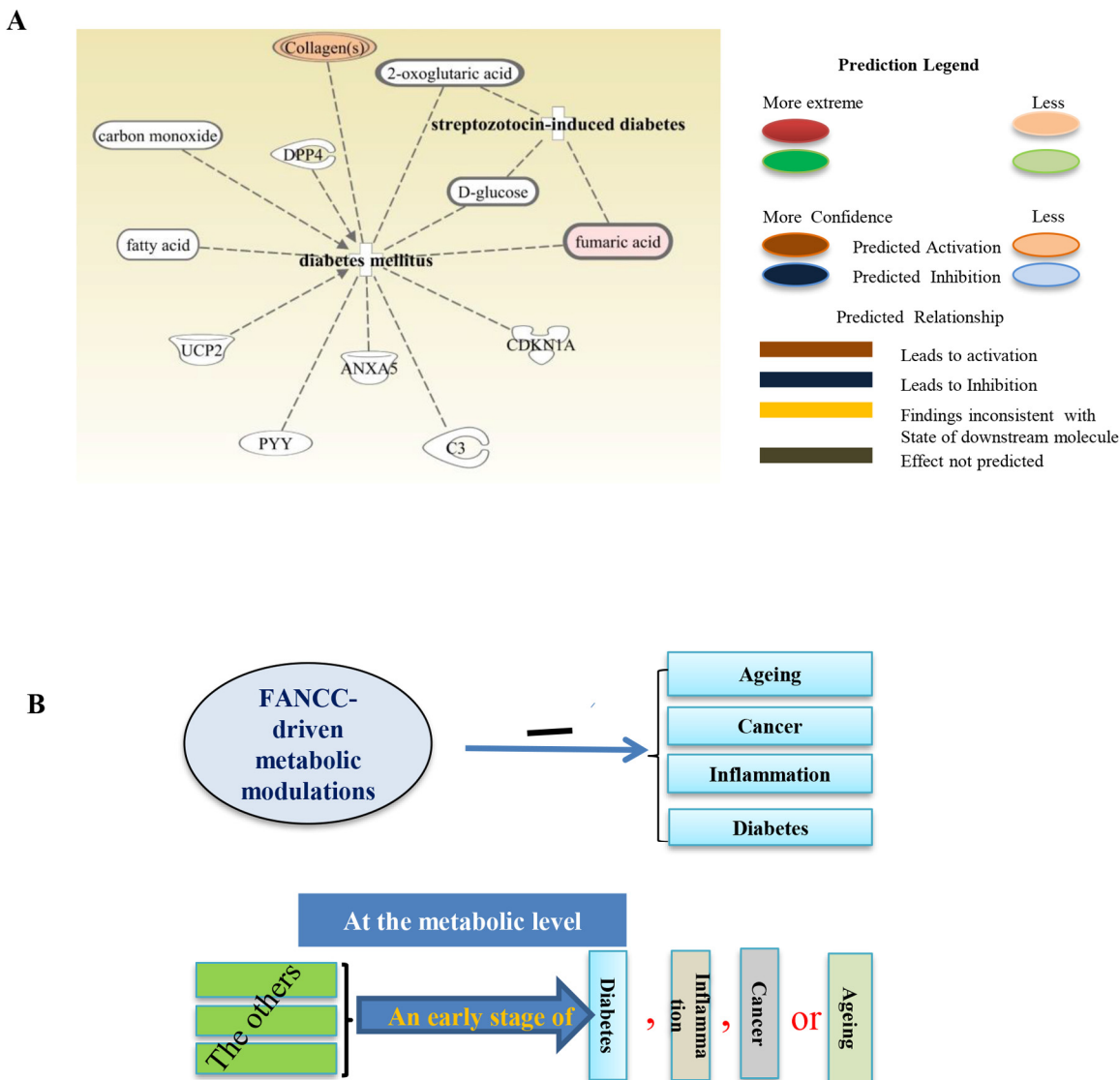


Figure 5. Metabolites associated with diabetes. (A) Metabolites such as collagen, 2-oxoglutaric acid, D-glucose, fumaric acid, C3, CDKN1A, ANXA5, PYY, UCP2, fatty acid and carbon monoxide were found either elevated or reduced, which are accordingly for DM-inhibitory or-promoting cellular activities (Collagens and fumaric acid were elevated). (B) The schematic representation of FANCC working model. FANCC-driven metabolic modulations are the common protection for humans from cancer, aging, inflammation and DM. Each of these diseases, before the occurrence of its “symptoms”, can be designated by some common metabolic alternations, appearing to be an initial stage of the subject disease. At this phase of common changes, a given “disease or symptom” may be reversible before its onset.

phorylethanolamine [29] were clearly elevated, which are symbolized for cancer inhibitory processes. Therefore, FANCC, besides joining the FA pathway, can also play important pathway-independent roles in the suppression of cancer formation.

We next checked the distinct metabolites associated with other metabolic disorders. As shown in Figure 4A, metabolites- glycine, citrulline, ornithine, L-asparagine, L-tyrosine, L-arginine, L-glutamine, L-leucine, L-isoleucine, L-alanine, L-valine, and L-proline [30] were elevated significantly in FANCC-high cells compared to the FANCC-low cells. Those metabolites are the signatures associated with aging inhibitory cellular processes, and FANCC thus can be directly implicated to also play crucial roles in the protection of humans from aging. More importantly, we also found that the levels of metabolites [the inosine [31] l-leucine, l-isoleucine, l-phenylalanine [32], hypoxanthine [33], and L-arginine [34]] were substantially changed in FANCC-high cells, which were directly related to inflammatory disease periodontitis (Figure 4B). Interestingly the level of inosine is 20 times higher in the cells carrying a high level of FANCC expression. Furthermore, we found the metabolites leading to another metabolite-disorder diabetes-mellitus (DM) (fumaric acid, fatty acid, D-glucose, carbon monoxide, collagens, 2-oxoglutaric acid) were altered in FANCC-high cells (Figure 5A). Among those metabolites, signature ones (fumaric acid and collagens [35, 36] to inhibitory DM processes were elevated (colored) in FANCC-high cells. While those metabolites that were anticipated to promote DM [35, 36], however, were decreased (uncolored). Together, these findings suggest that FANCC is involved in the regulation of various disorders from cancer, aging, to inflammation as well as to DM, consistent with DM-prone mice deficient in FANCC expression [18].

DISCUSSION

A growing number of studies have used mass spectrometry as a tool for the biomarker discovery [37, 38], but these studies have been largely cross sectional, provided limited information regarding the relation of metabolomic (or proteomic) biomarkers to the future development of diseases, thus metabolomic studies, particularly relevant to specific gene functions, are very important. The FA pathway has emerged as a crucial signaling network involving at least 22 FA proteins and many others together in the maintenance of multiple aspects of cellular processes, which protects humans from aging, cancer, bone marrow failure, and many developmental defects [8, 6, 39]. However, it is rarely studied as to the relationship between cell metabolism and FA signaling /any individual FA protein. In this study, we showed how FANCC affected cellular

biological functions through systematically studying FANCC-driven metabolic features and revealed the metabolomics aspects of inflammation, aging, or/and diabetes are associated with cancer at the metabolic level (Figure 1-5). Beside Warburg effect [40], other factors that link cancer to the metabolic disorder, include the referential metabolism of specific amino acids, such as valine, isoleucine, and glutamine [15, 19, 41]. In our experiment, we found that ten metabolites inosine, hypoxanthine, pyrophosphate, L-asparagine, L-phenylalanine, acetyl-L-carnitine, beta-alanine, glutaryl-carnitine, niacinamide and creatinine were significantly upregulated in FANCC-high cells (Figure 5), supporting the understanding that there is a reversible link between cancer and the metabolic disorders.

Previous reports suggest that inspection of the functional characteristics of a large set of interacting proteins demonstrates that they represent several general categories of cellular functions including involvement in transcription, cell signaling, transporter functions and oxidative metabolism. FANCC regulates oxidative metabolism as well as cell signaling functions by regulating cytoplasmic localization and interacting proteins associated with intracellular transport [42]. One large group of potential FA protein interactors are transcription regulators and proteins associated with transcription regulation was previously reported [43]. In our experiments, we found that FANCC proteins regulate the various metabolic signaling pathways that regulate cancer. Among all metabolites, L-ornithine, L-cysteine, L-asparagine, L-serine and docosahexaenoic acid were found to directly regulate the cancer (Figure 4C). This observation is consistent with the understanding of the multiple functions [42, 43] that FA proteins perform.

A looming challenge in cancer metabolism is to begin to understand metabolic heterogeneity within intact tumors. It is already clear from mouse model that both the driver and tissue of origin influence metabolism when the tumor is considered as a single compartment [44]. It is much less known about heterogeneity within each individual tumor as to the regional differences in nutrient availability, localized effects of stromal and inflammatory cells, and the cell-autonomous effects regulated by clonal expression of mutants and all altered metabolic preferences and flexibility. Here we found that metabolites related to inflammation was expressed such as L-arginine, Hypoxanthine, L-phenylalanine, L-lysine, L-leucine, L-isoleucine and inosine (Figure 5A). Inosine was the most expressed metabolite in FANCC-high cells, these metabolites could trigger the environment that induces inflammatory responses, activates metabolite pathways and leads to metabolic disorders, inflammation and ultimately cancer. These observa-

tions and suggestions are consistent with the indications from the reported studies on cancer cells secreting lactates that acidify the microenvironment, trigger an inflammatory response and ultimately promote tumor progression [45], together strengthening our understanding about metabolic heterogeneity during cancer progression.

Interestingly, DM is not associated with patients with FA; however, mice with FANCC knockout showed DM-prone [18]. This suggested that DM may be attributed more to the deficient FANCC, instead of a defective FA signaling pathway. We thus profiled metabolites in the MDA-MB-321 breast cancer cells with and without ectopically-expressed FANCC (Figure 1). These cells harbor an endogenous defect in the FA signaling pathway owing to the absence of chromosome 15 (ATCC), where a key FA gene (FANCI) is located (Figure 1A and Figure S1A, B), and thus, can provide a better system to study the functions of an individual FA protein. Functional detection of FANCC-high or low cells showed that FANCC can suppress tumorigenesis as evidenced by the decreased cell proliferation and reduced colony formation in soft agar and decreased capacity in cell migration (Figure 1C, D, Figure S1C, D). Therefore, this study not only helps our understanding of how FANCC protects us from DM but also provides in-depth understanding of mitigated tumorigenicity at the metabolic level. Via GC-TOFMS and UPLC-MS/MS, annotated metabolomes of FANCC-high or low cells showed a clear separation (Figure 2). Detailed analyses of these specific differences were clearly indicated that FANCC may play roles in inflammation, diabetes, aging as well as cancer (Figures 2-5). As reported by Hotamislingil's group, there was a link between inflammation and metabolic disorders. Many of the same metabolites are involved in obesity and diabetes, importantly few of the classic features for inflammation also had been observed in their metabolic studies on diabetes [46], and the subject link was indeed observed in our studies. More importantly, inflammation, diabetes along with aging can be suggested to be "a low grade" of cancer. This is because when FANCC is elevated, the tumorigenicity is mitigated in coordinated with the changed signature metabolites for aging, inflammation or diabetes. This condition may be fundamentally triggered by FANCC-driven metabolic alterations that engage a similar set of molecules and signaling pathways. Such as, we found that carbon monoxide, collagens, fatty acid, fumaric acid around to be involved in diabetes mellitus whereas inosine, L-arginine, hypoxanthine, l-phenylalanine, L-isoleucine, L-leucine, and L-lysine are involved in inflammatory disease periodontitis. From these FANCC-induced metabolic changes, we believe there is a principal link among

cancer, aging, inflammation, and DM (Figure 5B), that mediates many metabolic disorders that can serve as "a low-grade status" of a specific disease, e.g., cancer.

MATERIALS AND METHODS

Cell culture and chemicals

Human breast cancer cell line MDA-MB-231 was obtained from the America Type Culture Collection (ATCC, Manassas, VA). The cell lines were prepared as previously described. [47]. For the experiments, cells were trypsinized, and one million cells were counted and washed with 1X PBS; cell pellets were frozen at -80°C . A total of three replicates were prepared for each cell types. Ethanol, pyridine, methoxyamine hydrochloride, C8-C30 fatty acid methyl esters (FAMES), and ammonium acetate were purchased from Sigma-Aldrich (St. Louis, MO). Liquid chromatography-mass spectrometry (LC-MS) Optima-grade methanol and acetonitrile, formic acid, N-methyl-N-trimethyl-silyl-tri-fluoro-acetamide (MSTFA) with 1% TMCS, and hexane were obtained from Fisher Sci. (Fair Lawn, NJ). The ultrapure water was produced by Millipore Advantage A10 system with an LC-MS Polisher filter (Billerica, MA).

Cloning, transfection and Western blotting

For cloning a full-length human FANCC, PCR amplification used primers (Forward: ATGGCTCAAGATTCAGTA, Reverse: CTAGACTTGAGTTCGCA). pcDNA3.1/NT-GFP-TOPO TA cloning and Expression (Kit from Invitrogen) and the building up of stable cell lines were carried out as shown previously [48]. For western blotting, protein samples were prepared from FANCC low or high group's cells via using 1X SDS sample buffer, and separated in 8-10% SDS-PAGE and then transferred to the nitrocellulose membrane (Bio-Rad). Membranes were blocked with 5% non-fat skim milk in 1XPBS with tween-20 then incubated with FANCC and FANCI antibody diluted 1:1000 in 1XPBST. Horseradish peroxidase-conjugated rabbit or mouse antibodies were used as secondary antibody (1:5000-1:10000 dilution) for 1 hour at room temperature.

Trans-well and soft -Agar assays

Trans-well assay was carried out using Matrigel Invasion Chamber, 24 well plates 8.0 Micron purchased from Corning. Briefly, 2×10^4 cells were cultured in Matrigel well plates with two types of cells (Control and FANCC) respectively. Cells that were not migrated were swapped; while cells that migrated into the other side were fixed and stained with crystal violet. The

images and numbers of migrated cells were used to indicate cell migration capacity. For soft Agar assay, 2X DMEM/F12 media was used to prepare 0.6% of base agar in 35mm dish and kept 20 minuses in 4°C to make agar completely solidified, 2X10³ Cells were plated along with 2XDMEM/F12 in 0.4% of top ager. The dishes were incubated for 2 weeks at 37°C and stained with crystal violet.

Sample preparation for metabolic profiling

The cell line samples were prepared as previously described with modifications [49, 50]. The appropriate weight of homogenizer beads and 50 µL of cold water were added to the cell-line samples for the first step of extraction. An aliquot of 270 µL of the mixture of ethanol and chloroform (3:1 = v/v) was added to the extracts for the second-step extraction. The sample extracts were centrifuged at 4 °C and 14500 rpm for 20 min. The supernatant was used for targeted metabolic profiling of lipids with Ultra-Performance Liquid-Chromatography tandem Mass Spectrometry (UPLC–MS/MS) and for untargeted metabolic profiling with Gas Chromatography -Time-of-Flight Mass Spectrometry (GC–TOFMS).

Lipid profiling

Each aliquot of 20 µL of the supernatant was added to a 96-well Biocrates Kit plate (Biocrates Life Sciences, Austria) for lipid quantitation. After samples were dried under nitrogen, each 300 µL of extraction solvent (5 mM ammonium acetate in methanol) was added, and the kit plate was gently shaken at room temperature for 30 min. The sample extracts were filtered through the 0.45 µm membrane of the kit plate, and each aliquot of 20 µL of sample was diluted with 380 µL of methanol with 5 mM ammonium acetate for flow-injection analysis (FIA) of lipids.

Each 10 µL of the sample was directly injected into the mass spectrometer with elution solvent (methanol with 5 mM ammonium acetate) at a varied flow rate from 30 to 200 µL/min within 3 min.

Untargeted metabolomics profiling with GC-TOFMS

Each aliquot of 250 µL above the supernatant was dried with a freeze-dryer. The dried samples were derivatized by methoxyamine hydrochloride in pyridine and subsequently by MSTFA. Retention indices of C8–C30 fatty acid methyl esters (FAMES) were added for retention-time correction.

Each 1 µL sample was analyzed on an Agilent 7890A gas chromatography coupled to a Leco Pegasus time-

off-light mass spectrometer (Leco Corp., St Joseph, MI) for global metabolite profiling. The analytes were introduced with a splitless mode to achieve maximum sensitivity and separated on an Rtx-5 MS capillary column (30 m × 0.25 mm I.D., 0.25 µm) (Restek, Bellefonte, PA). The column temperature was initially set to 80 °C for 2 min, increased to 300 °C for 12 min, and maintained at 300 °C for 5 min. The solvent delay was set to 4.4 min. The front inlet temperature, transfer-line temperature, and source temperature were set to 260 °C, 270 °C, and 220°C, respectively. The mass spectrometer was operated on a fullscan mode from 50 to 500 at an acquisition rate of 20 spectra/sec.

Statistical data analysis

The raw LC–MS/MS data files were processed with TargetLynx Application Manager (Waters Corp., Milford, MA) to extract peak area and retention time of each metabolite. The raw GC–TOFMS data files were processed with Chroma TOF software (Leco Corp., St Joseph, MI) to extract peak signal and retention time for each metabolite. The detected metabolites were annotated with our internal standard library using an automated mass spectral data processing (AMSDP) software package[51]. IPA was applied to visualize the overall difference between FANCC-expressing high and low cells along with SIMCA-P 12.0.1 (Umetrics, Umeå, Sweden). Nonparametric statistical analysis (i.e., the Mann–Whitney U test) was used for searching the significantly different metabolites between the groups with a critical p-value of 0.05 and 0.01.

Molecular pathway and network analysis in Ingenuity Pathway Analysis (IPA)

To systematically understand the metabolites in cells expressing a high level of FANCC compared to control cells expressing a basal level of FANCC, we uploaded the metabolite lists (with HMDB IDs) and the change folds of the differentially expressed metabolites onto an Ingenuity Pathway Analysis (IPA) server (<http://3cr-apps.cc.hawaii.edu/IPA/>). Canonical pathways and chemical–protein interaction networks were generated on the basis of the knowledge sorted in the Ingenuity Pathway Knowledge base. A ratio of the number of metabolites that map to the canonical pathway divided by the total number of molecules that map to the pathway was displayed. Fisher’s exact test was used to calculate the p-value to determine the probability that the association between the metabolites and the canonical pathway was explained by chance alone. The network score was based on the hypergeometric distribution and was calculated with the right-tailed Fisher’s exact test. The higher a score was, the more relevant the eligible submitted molecules were to the network.

ACKNOWLEDGEMENTS

We thank a previous lab member Dr. Panneerselvam Jayabal for his help with using IPA.

CONFLICTS OF INTEREST

There is no conflict of interest to disclosure.

FUNDING

We thank NCI funding to PWF (R01CA136532 & R01CA188251 to PF), an institutional funding to PF for a pilot study on breast cancer, and startups from University of Hawaii Cancer Center.

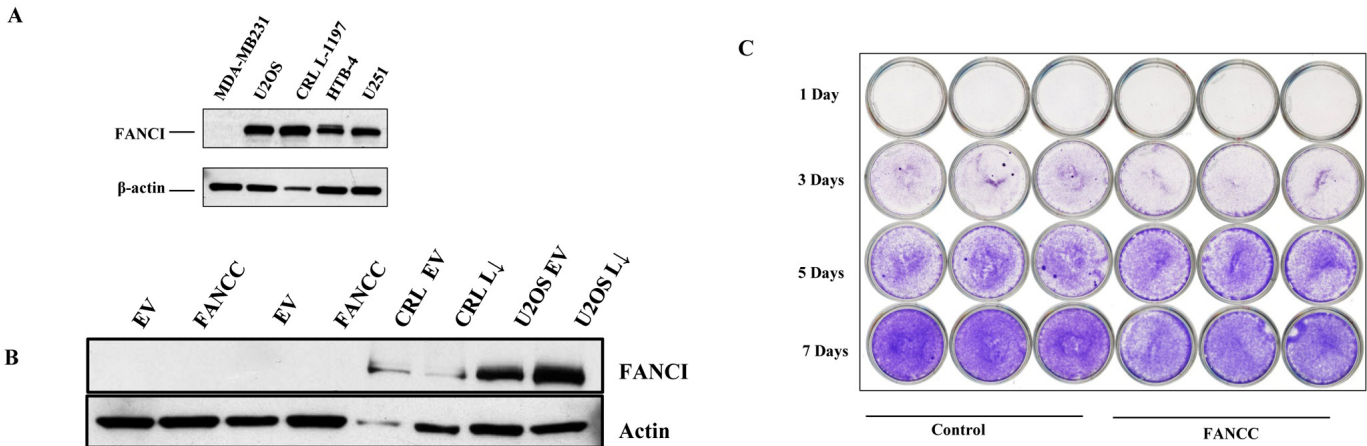
REFERENCES

1. Pavlova NN, Thompson CB. The Emerging Hallmarks of Cancer Metabolism. *Cell Metab.* 2016; 23:27–47. <https://doi.org/10.1016/j.cmet.2015.12.006>
2. Wang TJ, Larson MG, Vasani RS, Cheng S, Rhee EP, McCabe E, Lewis GD, Fox CS, Jacques PF, Fernandez C, O'Donnell CJ, Carr SA, Mootha VK, et al. Metabolite profiles and the risk of developing diabetes. *Nat Med.* 2011; 17:448–53. <https://doi.org/10.1038/nm.2307>
3. Wellen KE, Hotamisligil GS. Inflammation, stress, and diabetes. *J Clin Invest.* 2005; 115:1111–19. <https://doi.org/10.1172/JCI25102>
4. Semenkovich CF. Insulin resistance and atherosclerosis. *J Clin Invest.* 2006; 116:1813–22. <https://doi.org/10.1172/JCI29024>
5. Engert A, Balduini C, Brand A, Coiffier B, Cordonnier C, Döhner H, de Wit TD, Eichinger S, Fibbe W, Green T, de Haas F, Iolascon A, Jaffredo T, et al, and EHA Roadmap for European Hematology Research. The European Hematology Association Roadmap for European Hematology Research: a consensus document. *Haematologica.* 2016; 101:115–208. <https://doi.org/10.3324/haematol.2015.136739>
6. Che R, Zhang J, Nepal M, Han B, Fei P. Multifaceted Fanconi Anemia Signaling. *Trends Genet.* 2018; 34:171–83. <https://doi.org/10.1016/j.tig.2017.11.006>
7. Nepal M, Che R, Ma C, Zhang J, Fei P. FANCD2 and DNA Damage. *Int J Mol Sci.* 2017; 18:E1804. <https://doi.org/10.3390/ijms18081804>
8. Nepal M, Che R, Zhang J, Ma C, Fei P. Fanconi Anemia Signaling and Cancer. *Trends Cancer.* 2017; 3:840–56. <https://doi.org/10.1016/j.trecan.2017.10.005>
9. Sawyer SL, Tian L, Kähkönen M, Schwartzentruber J, Kircher M, Majewski J, Dymant DA, Innes AM, Boycott KM, Moreau LA, Moilanen JS, Greenberg RA, and University of Washington Centre for Mendelian Genomics, and FORGE Canada Consortium. Biallelic mutations in BRCA1 cause a new Fanconi anemia subtype. *Cancer Discov.* 2015; 5:135–42. <https://doi.org/10.1158/2159-8290.CD-14-1156>
10. Bouffard F, Plourde K, Bélanger S, Ouellette G, Labrie Y, Durocher F. Analysis of a FANCE splice isoform in regard to dna repair. *J Mol Biol.* 2015; 427:3056–73. <https://doi.org/10.1016/j.jmb.2015.08.004>
11. Bogliolo M, Surrallés J. Fanconi anemia: a model disease for studies on human genetics and advanced therapeutics. *Curr Opin Genet Dev.* 2015; 33:32–40. <https://doi.org/10.1016/j.gde.2015.07.002>
12. Kottemann MC, Smogorzewska A. Fanconi anaemia and the repair of Watson and Crick DNA crosslinks. *Nature.* 2013; 493:356–63. <https://doi.org/10.1038/nature11863>
13. National Cancer Institute Cisplatin <http://www.cancer.gov/cancertopics/druginfo/cisplatin>. 2014.
14. Neveling K, Endt D, Hoehn H, Schindler D. Genotype-phenotype correlations in Fanconi anemia. *Mutat Res.* 2009; 668:73–91. <https://doi.org/10.1016/j.mrfmmm.2009.05.006>
15. Panneerselvam J, Xie G, Che R, Su M, Zhang J, Jia W, Fei P. Distinct Metabolic Signature of Human Bladder Cancer Cells Carrying an Impaired Fanconi Anemia Tumor-Suppressor Signaling Pathway. *J Proteome Res.* 2016; 15:1333–41. <https://doi.org/10.1021/acs.jproteome.6b00076>
16. Shen Y, Lee YH, Panneerselvam J, Zhang J, Loo LW, Fei P. Mutated Fanconi anemia pathway in non-Fanconi anemia cancers. *Oncotarget.* 2015; 6:20396–403. <https://doi.org/10.18632/oncotarget.4056>
17. Zhang J, Zhao D, Park HK, Wang H, Dyer RB, Liu W, Klee GG, McNiven MA, Tindall DJ, Molina JR, Fei P. FAVL elevation in human tumors disrupts Fanconi anemia pathway signaling and promotes genomic instability and tumor growth. *J Clin Invest.* 2010; 120:1524–34. <https://doi.org/10.1172/JCI40908>
18. Li J, Sipple J, Maynard S, Mehta PA, Rose SR, Davies SM, Pang Q. Fanconi anemia links reactive oxygen species to insulin resistance and obesity. *Antioxid Redox Signal.* 2012; 17:1083–98. <https://doi.org/10.1089/ars.2011.4417>
19. Sevinsky CJ, Khan F, Kokabee L, Darehshouri A, Maddipati KR, Conklin DS. NDRG1 regulates neutral lipid metabolism in breast cancer cells. *Breast Cancer Res.* 2018; 20:55. <https://doi.org/10.1186/s13058-018-0980-4>
20. Fu D, Dudimah FD, Zhang J, Pickering A, Panneerselvam

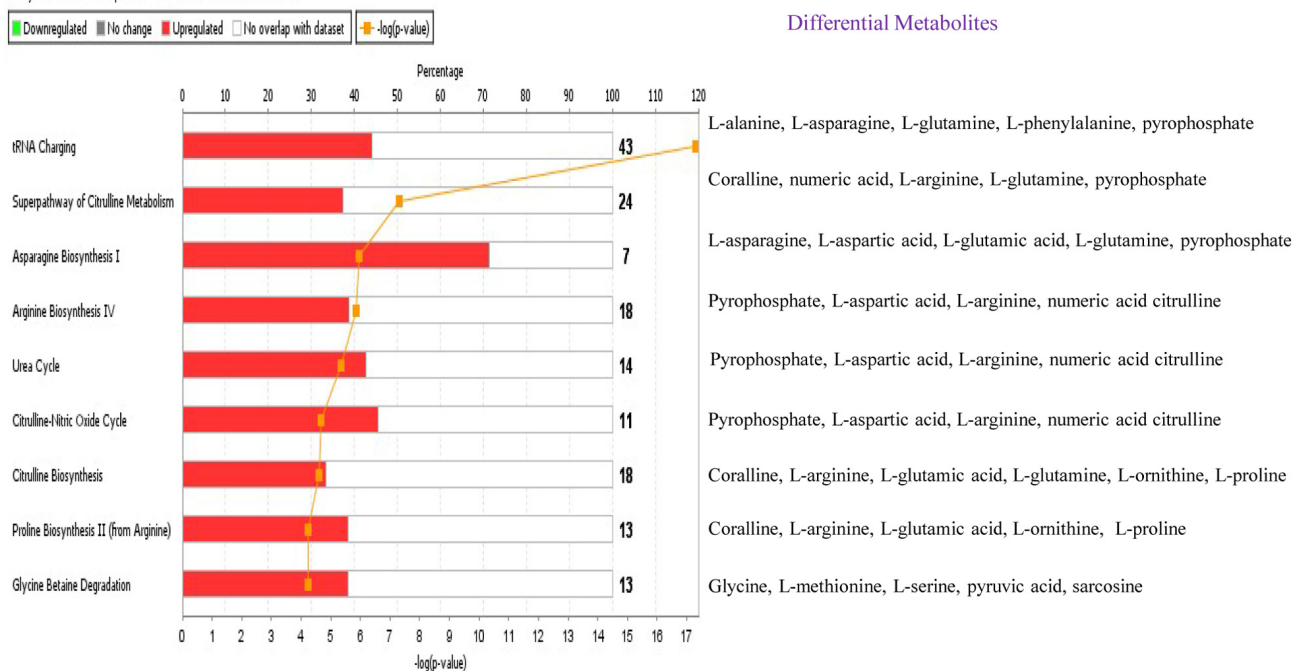
- J, Palrasu M, Wang H, Fei P. Recruitment of DNA polymerase eta by FANCD2 in the early response to DNA damage. *Cell Cycle*. 2013; 12:803–09. <https://doi.org/10.4161/cc.23755>
21. Halama A, Möller G, Adamski J. Metabolic signatures in apoptotic human cancer cell lines. *OMICS*. 2011; 15:325–35. <https://doi.org/10.1089/omi.2010.0121>
 22. Park M, Kim H. Anti-cancer Mechanism of Docosahexaenoic Acid in Pancreatic Carcinogenesis: A Mini-review. *J Cancer Prev*. 2017; 22:1–5. <https://doi.org/10.15430/JCP.2017.22.1.1>
 23. Oskouian B, Saba JD. Cancer treatment strategies targeting sphingolipid metabolism. *Adv Exp Med Biol*. 2010; 688:185–205. https://doi.org/10.1007/978-1-4419-6741-1_13
 24. Benavides MA, Bosland MC, da Silva CP, Gomes Sares CT, de Oliveira AM, Kemp R, dos Reis RB, Martins VR, Sampaio SV, Bland KI, Grizzle WE, dos Santos JS. L-Methionine inhibits growth of human pancreatic cancer cells. *Anticancer Drugs*. 2014; 25:200–03. <https://doi.org/10.1097/CAD.000000000000038>
 25. Huang H, Liu N, Guo H, Liao S, Li X, Yang C, Liu S, Song W, Liu C, Guan L, Li B, Xu L, Zhang C, et al. L-carnitine is an endogenous HDAC inhibitor selectively inhibiting cancer cell growth in vivo and in vitro. *PLoS One*. 2012; 7:e49062. <https://doi.org/10.1371/journal.pone.0049062>
 26. Jayaram HN, Cooney DA. Analogs of L-aspartic acid in chemotherapy for cancer. *Cancer Treat Rep*. 1979; 63:1095–108.
 27. Dutta S, Ray S, Nagarajan K. Glutamic acid as anticancer agent: an overview. *Saudi Pharm J*. 2013; 21:337–43. <https://doi.org/10.1016/j.jsps.2012.12.007>
 28. Chen AC, Martin AJ, Choy B, Fernández-Peñas P, Dalziel RA, McKenzie CA, Scolyer RA, Dhillon HM, Vardy JL, Krickler A, St George G, Chinniah N, Halliday GM, Damian DL. A Phase 3 Randomized Trial of Nicotinamide for Skin-Cancer Chemoprevention. *N Engl J Med*. 2015; 373:1618–26. <https://doi.org/10.1056/NEJMoa1506197>
 29. Ferreira AK, Meneguelo R, Pereira A, Mendonça Filho O, Chierice GO, Maria DA. Anticancer effects of synthetic phosphoethanolamine on Ehrlich ascites tumor: an experimental study. *Anticancer Res*. 2012; 32:95–104.
 30. Houtkooper RH, Argmann C, Houten SM, Cantó C, Jenning EH, Andreux PA, Thomas C, Doenlen R, Schoonjans K, Auwerx J. The metabolic footprint of aging in mice. *Sci Rep*. 2011; 1:134. <https://doi.org/10.1038/srep00134>
 31. Haskó G, Kuhel DG, Németh ZH, Mabley JG, Stachlewitz RF, Virág L, Lohinai Z, Southan GJ, Salzman AL, Szabó C. Inosine inhibits inflammatory cytokine production by a posttranscriptional mechanism and protects against endotoxin-induced shock. *J Immunol*. 2000; 164:1013–19. <https://doi.org/10.4049/jimmunol.164.2.1013>
 32. Saxena RN, Pendse VK, Khanna NK. Anti-inflammatory and analgesic properties of four amino-acids. *Indian J Physiol Pharmacol*. 1984; 28:299–305.
 33. Virág L, Szabó C. Purines inhibit poly(ADP-ribose) polymerase activation and modulate oxidant-induced cell death. *FASEB J*. 2001; 15:99–107. <https://doi.org/10.1096/fj.00-0299com>
 34. Hnia K, Gayraud J, Hugon G, Ramonatxo M, De La Porte S, Matecki S, Mornet D. L-arginine decreases inflammation and modulates the nuclear factor-kappaB/matrix metalloproteinase cascade in mdx muscle fibers. *Am J Pathol*. 2008; 172:1509–19. <https://doi.org/10.2353/ajpath.2008.071009>
 35. Adam J, Ramracheya R, Chibalina MV, Ternette N, Hamilton A, Tarasov AI, Zhang Q, Rebelato E, Rorsman NJ, Martín-Del-Río R, Lewis A, Özkan G, Do HW, et al. Fumarate Hydratase Deletion in Pancreatic β Cells Leads to Progressive Diabetes. *Cell Reports*. 2017; 20:3135–48. <https://doi.org/10.1016/j.celrep.2017.08.093>
 36. Snedeker JG, Gautieri A. The role of collagen crosslinks in ageing and diabetes - the good, the bad, and the ugly. *Muscles Ligaments Tendons J*. 2014; 4:303–08.
 37. Huffman KM, Shah SH, Stevens RD, Bain JR, Muehlbauer M, Slentz CA, Tanner CJ, Kuchibhatla M, Houmard JA, Newgard CB, Kraus WE. Relationships between circulating metabolic intermediates and insulin action in overweight to obese, inactive men and women. *Diabetes Care*. 2009; 32:1678–83. <https://doi.org/10.2337/dc08-2075>
 38. Lewis GD, Asnani A, Gerszten RE. Application of metabolomics to cardiovascular biomarker and pathway discovery. *J Am Coll Cardiol*. 2008; 52:117–23. <https://doi.org/10.1016/j.jacc.2008.03.043>
 39. Fei P, Yin J, Wang W. New Advances in the DNA damage response network of Fanconi anemia and BRCA proteins, FAAP95 replaces BRCA2 as the true FANCB protein. *Cell Cycle*. 2005; 4:80–86. <https://doi.org/10.4161/cc.4.1.1358>
 40. Warburg O. 1956. On the origin of cancer cells. pp. 309–314.
 41. Halama A, Guerrouahen BS, Pasquier J, Diboun I, Karoly ED, Suhre K, Rafii A. Metabolic signatures diffe-

- rentiate ovarian from colon cancer cell lines. *J Transl Med.* 2015; 13:223. <https://doi.org/10.1186/s12967-015-0576-z>
42. Reuter TY, Medhurst AL, Waisfisz Q, Zhi Y, Herterich S, Hoehn H, Gross HJ, Joenje H, Hoatlin ME, Mathew CG, Huber PA. Yeast two-hybrid screens imply involvement of Fanconi anemia proteins in transcription regulation, cell signaling, oxidative metabolism, and cellular transport. *Exp Cell Res.* 2003; 289:211–21. [https://doi.org/10.1016/S0014-4827\(03\)00261-1](https://doi.org/10.1016/S0014-4827(03)00261-1)
43. Hoatlin ME, Zhi Y, Ball H, Silvey K, Melnick A, Stone S, Arai S, Hawe N, Owen G, Zelent A. A novel BTB/POZ transcriptional repressor protein interacts with the Fanconi anemia group C protein and PLZF. *Blood.* 1999; 94:3737-47.
44. Yuneva MO, Fan TW, Allen TD, Higashi RM, Ferraris DV, Tsukamoto T, Matés JM, Alonso FJ, Wang C, Seo Y, Chen X, Bishop JM. The metabolic profile of tumors depends on both the responsible genetic lesion and tissue type. *Cell Metab.* 2012; 15:157–70. <https://doi.org/10.1016/j.cmet.2011.12.015>
45. Yabu M, Shime H, Hara H, Saito T, Matsumoto M, Seya T, Akazawa T, Inoue N. IL-23-dependent and -independent enhancement pathways of IL-17A production by lactic acid. *Int Immunol.* 2011; 23:29–41. <https://doi.org/10.1093/intimm/dxq455>
46. Hotamisligil GkS. 2006. Inflammation and metabolic disorders. Nature Publishing Group, pp. 860-867.
47. Zhang J, Zhao D, Park HK, Wang H, Dyer RB, Liu W, Klee GG, McNiven MA, Tindall DJ, Molina JR, Fei P. FAVL elevation in human tumors disrupts Fanconi anemia pathway signaling and promotes genomic instability and tumor growth. *J Clin Invest.* 2010; 120:1524–34. <https://doi.org/10.1172/JCI40908>
48. Panneerselvam J, Pickering A, Han B, Li L, Zheng J, Zhang J, Zhang Y, Fei P. Basal level of FANCD2 monoubiquitination is required for the maintenance of a sufficient number of licensed-replication origins to fire at a normal rate. *Oncotarget.* 2014; 5:1326–37. <https://doi.org/10.18632/oncotarget.1796>
49. Ni Y, Xie G, Jia W. Metabonomics of human colorectal cancer: new approaches for early diagnosis and biomarker discovery. *J Proteome Res.* 2014; 13:3857–70. <https://doi.org/10.1021/pr500443c>
50. Qiu Y, Cai G, Zhou B, Li D, Zhao A, Xie G, Li H, Cai S, Xie D, Huang C, Ge W, Zhou Z, Xu LX, et al. A distinct metabolic signature of human colorectal cancer with prognostic potential. *Clin Cancer Res.* 2014; 20:2136–46. <https://doi.org/10.1158/1078-0432.CCR-13-1939>
51. Ni Y, Qiu Y, Jiang W, Suttlemyre K, Su M, Zhang W, Jia W, Du X. ADAP-GC 2.0: deconvolution of coeluting metabolites from GC/TOF-MS data for metabolomics studies. *Anal Chem.* 2012; 84:6619–29. <https://doi.org/10.1021/ac300898h>

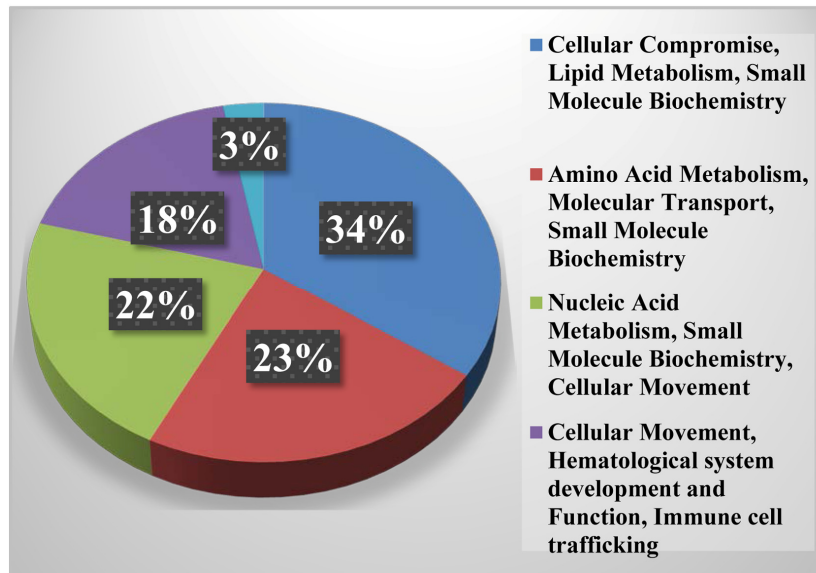
SUPPLEMENTARY MATERIAL



Supplementary Figure 1. (A,B) The FANCI expression is undetectable in MDA-MB231 cells. Additional western blotting showed that FANCI is not detectable in the parental cells (A) as well in derivatives (transfected with empty Vectors for control or FANCC cDNA containing plasmids) (B). (C) Cells containing FANCC cDNA grow slowly. Determination of the cell proliferation of FANCC-high versus low cells. A total of 2000 cells of FANCC-high or low cells were plated in triplicates and stained with crystal violet at the day 1, 3, 5 or 7. FANCC-high cells clearly have a lower density compared to the corresponding FANCC-low cells.



Supplementary Figure 2. Altered basic cellular processes in FANCC-high cells compared to FANCC-low cells. Analysis of molecular processes on the basis of metabolites present in FANCC-high or Low cells. Most significantly altered basic molecular processes and their metabolites revealed by IPA displayed. A total number of signature metabolites for each process were listed at the side.



Supplementary Figure 3. Categories of altered 205 metabolites.

Supplementary Table 1. Summary of metabolomics analysis.

Canonical Pathway	p-Value	Overlap
tRNA Charging	5.1×10^{-18}	44.2% (19/43)
Superpathway of Citrulline Metabolism	4.9×10^{-08}	37.5% (9/24)
Arginine Biosynthesis IV	1.3×10^{-6}	71.4% (5/7)
Asparagine Biosynthesis	1.8×10^{-6}	38.9% (7/18)
Urea Cycle	4.33×10^{-6}	42.9% (6/14)
Diseases and Bio Functions	p-Value	Metabolites
Cancer	$4.39 \times 10^{-02} - 5.93 \times 10^{-14}$	30
Connective tissue Disorders	$3.67 \times 10^{-02} - 3.39 \times 10^{-07}$	15
Gastrointestinal Disease	$4.93 \times 10^{-02} - 5.93 \times 10^{-14}$	28
Inflammatory Disease	$3.67 \times 10^{-02} - 3.39 \times 10^{-07}$	7
Organismal injury and Abnormalities	$4.42 \times 10^{-02} - 5.9 \times 10^{-07}$	36
Molecular and Cellular Functions	p-Value	Metabolites
Cellular growth and Proliferation	$4.93 \times 10^{-02} - 5.93 \times 10^{-14}$	30
Amino Acid metabolism	$3.89 \times 10^{-02} - 2.43 \times 10^{-10}$	21
Molecular Transport	$4.93 \times 10^{-02} - 2.43 \times 10^{-10}$	33
Small Molecule Biochemistry	$4.93 \times 10^{-02} - 2.43 \times 10^{-10}$	36
Cell Cycle	$4.93 \times 10^{-02} - 2.43 \times 10^{-10}$	13
Physiological System Development and Functions	p-Value	Metabolites
Organism Development	$3.36 \times 10^{-02} - 8.20 \times 10^{-10}$	22
Hepatic system Development and Function	$3.67 \times 10^{-02} - 5.85 \times 10^{-11}$	11
Nervous System Development and Function	$4.93 \times 10^{-02} - 2.13 \times 10^{-05}$	15
Organismal Survival	$8.14 \times 10^{-04} - 8.14 \times 10^{-04}$	13
Tissue Morphology	$4.04 \times 10^{-02} - 7.57 \times 10^{-03}$	8

Toxicology Functions		
Clinical Chemistry and Hematology	p-Value	Metabolites
Increase Levels of albumin	$8.20 \times 10^{-10} - 2.80 \times 10^{-10}$	8
Increase Levels of LDH	$1.92 \times 10^{-01} - 1.39 \times 10^{-01}$	3
Increase Levels of Alkaline Phosphatase	$1.32 \times 10^{-03} - 1.32 \times 10^{-03}$	2
Increase Levels of Creatinine	$1.32 \times 10^{-03} - 1.32 \times 10^{-03}$	2
Cardiotoxicity	p-Value	Metabolites
Cardiac Damage	$1.06 \times 10^{-01} - 1.06 \times 10^{-01}$	1
Cardiac Degeneration	$1.06 \times 10^{-01} - 1.06 \times 10^{-01}$	1
Bradycardia	$1.71 \times 10^{-01} - 1.71 \times 10^{-01}$	1
Congenital Heart Anomaly	$1.39 \times 10^{-01} - 1.39 \times 10^{-01}$	1
Cardiac Necrosis/Cell Death	$1.39 \times 10^{-01} - 1.39 \times 10^{-01}$	2
Hepatotoxicity	p-Value	Metabolites
Liver Necrosis/Cell Death	$7.34 \times 10^{-01} - 4.38 \times 10^{-03}$	6
Liver Steatosis	$2.31 \times 10^{-01} - 2.96 \times 10^{-04}$	7
Hepatocellular Carcinoma	$3.29 \times 10^{-06} - 3.29 \times 10^{-06}$	8
Liver Hyperplasia/Hyperproliferation	$3.29 \times 10^{-06} - 3.29 \times 10^{-06}$	8
Liver Inflammation/Hepatitis	$3.03 \times 10^{-01} - 3.67 \times 10^{-02}$	3
Nephrotoxicity	p-Value	Metabolites
Kidney Failure	$2.33 \times 10^{-01} - 3.67 \times 10^{-02}$	2
Renal Necrosis/Cell Death	$1.06 \times 10^{-01} - 3.67 \times 10^{-02}$	5
Glomerular Injury	$1.06 \times 10^{-01} - 1.06 \times 10^{-01}$	1
Nephrosis	$1.06 \times 10^{-01} - 1.06 \times 10^{-01}$	1
Renal Fibrosis	$1.06 \times 10^{-01} - 1.06 \times 10^{-01}$	1

Supplementary Table 2. Top analysis-ready molecules.

Experimental Fold Change up-regulated / down-regulated Molecules	
Metabolites	Fold Change
Inosine	↑ 20.990
Hypoxanthine	↑ 12.640
Pyrophosphate	↑ 8.310
L-asparagine	↑ 7.240
L-phenylalanine	↑ 7.130
Acetyl-L-carnitine	↑ 6.550
Beta-alanine	↑ 6.300
Glutaryl carnitine	↑ 6.110
Niacinamide	↑ 6.030
Creatinine	↑ 5.910
14:0/22:0 phosphatidylcholine	↓ -8.400
22:1(13Z)/20:3(5Z,8Z,11Z) phosphatidylcholine	↓ -5.880
18:0/24:1(15Z) phosphatidylcholine	↓ -5.610
20:0/22:2(13Z,16Z) phosphatidylcholine	↓ -5.590
20:0/20:2(11Z,14Z) phosphatidylcholine	↓ -5.530
20:0/22:5(7Z,10Z,13Z,16Z,19Z) phosphatidylcholine	↓ -5.380
16:0/24:1(15Z) phosphatidylcholine	↓ -5.320
20:0/22:6(4Z,7Z,10Z,13Z,16Z,19Z) phosphatidylcholine	↓ -4.910
18:3(9Z,12Z,15Z)/22:0 phosphatidylcholine	↓ -4.700
dm18:0/18:1(9Z) phosphatidylcholine	↓ -4.680

Supplementary Table 3. Top networks of the metabolites.

ID	Associated Network Functions	Score
1	Cellular Compromise, Lipid Metabolism, Small Molecule Biochemistry	35
2	Amino Acid Metabolism, Molecular Transport, Small Molecule Biochemistry	23
3	Nucleic Acid Metabolism, Small Molecule Biochemistry, Cellular Movement	22
4	Cellular Movement, Hematological system development and Function, Immune cell trafficking	18
5	Cellular Growth and Proliferation, Organism Development, Organismal Injury and Abnormalities	3