

Panama, a hot spot for *Hermatomyces* (*Hermatomycetaceae*, *Pleosporales*) with five new species, and a critical synopsis of the genus

Ondřej Koukol¹, Gregorio Delgado^{2,3}, Tina A. Hofmann⁴, and Meike Piepenbring³

¹Department of Botany, Faculty of Science, Charles University, Benátská 2, CZ–128 01 Praha 2, Czech Republic; corresponding author e-mail: ondrej.koukol@natur.cuni.cz

²EMLab P&K Houston, 10900 Brittmoore Park Dr. Suite G, Houston, TX 77041, USA

³Department of Mycology, Institute of Ecology, Evolution and Diversity, Goethe Universität Frankfurt, Max-von-Laue-Str. 13, 60438 Frankfurt am Main, Germany

⁴Centro de Investigaciones Micológicas (CIMi), Herbarium UCH, Autonomous University of Chiriquí (UNACHI), 0427, David, Chiriquí, Panama

Abstract: Five new species belonging to *Hermatomyces* (*Hermatomycetaceae*, *Pleosporales*) are described based on morphological investigations of specimens collected on rotten twigs and stems of various plants in Panama as well as phylogenetic analyses of sequence data of nuclear ribosomal and protein coding genes (EF1- α , RPB2, β -TUB). The new species are described as: *Hermatomyces bifurcatus*, *H. constrictus*, *H. megasporus*, *H. sphaericoides*, and *H. verrucosus* spp. nov. Previously described species such as *H. sphaericus* and *H. tucumanensis* were identified among the studied specimens. The new combination, *H. reticulatus*, is made for *Subicularium reticulatum* based on examination of the holotype and fresh collections. *Hermatomyces subiculosus*, originally described from Thailand, is reduced to synonymy with *H. reticulatus*; *H. tectonae* is synonymized under *H. sphaericus* based on morphological and molecular evidence; and *H. chiangmaiensis* and *H. thailandicus* are considered later synonyms of *H. krabiensis* and *H. indicus*, respectively. The type material of *Scyphostroma mirum* was found to be conspecific with *H. tucumanensis* and, therefore, the generic name *Hermatomyces* should be conserved or protected against the older name *Scyphostroma* and the binomial *H. tucumanensis* against *S. mirum*. Sixteen species of *Hermatomyces* are recognized, their distinctive characteristics are highlighted in line drawings and a key is provided for their identification. The peculiar morphology and consistent phylogeny of new and previously known *Hermatomyces* species supports the recognition of the recently introduced monotypic family *Hermatomycetaceae* as a well delimited monophyletic taxon within the order *Pleosporales*.

Key words:

Dothideomycetes
lowland tropical forest
Neotropical fungi
new taxa

Article info: Submitted: 22 February 2018; Accepted: 12 May 2018; Published: 22 May 2018.

INTRODUCTION

The genus *Hermatomyces* accommodates asexual fungi growing saprotrophically on dead plant tissue and producing two types of multicellular conidia in nest-like, velvety sporodochia composed of melanized and sterile hyphae surrounding a fertile sporulating area (Ellis 1971). The two types of conidia usually recognized are the lenticular, muriform ones, with subhyaline to pale brown peripheral cells surrounding dark brown to black central cells, and the cylindrical ones (also referred to as paraphyses, setae or turbinate conidia), when present are composed of 1–4 columns of several (2–11) hyaline, thin-walled cells, sometimes with cell walls unevenly melanized. Speggolini (1911) first introduced the generic name, with *H. tucumanensis* as the type species, based on material collected in Argentina. In his original description he recognized only one type of conidia, the almost globose parenchymatic lenticular conidia, and interpreted the cylindrical ones as conidiophores. Later, this species was recorded from Ghana and Sierra Leone (Hughes 1953),

Cuba (Mercado 1984), Peru (Matsushima 1993), Taiwan (Chang 1995), USA (Delgado 2013), and India (Pratibha *et al.* 2012, Prasher & Singh 2015) on dead leaves or wood of a wide range of plant species. Hughes (1953) also introduced the combination *H. sphaericus* for a hermatomyces-like fungus originally described as *Stemphylium sphaericum* with only lenticular conidia. Subsequently, four additional species were described based on morphology: *H. dimorphus* from India (Rao & de Hoog 1986), *H. amphispurus* from México (Castañeda & Heredia 2000), *H. uniseriatus* from Brazil (Leão *et al.* 2013), and *H. indicus* from India (Prasher & Sushma 2014).

In recent years, several species with one or two types of conidia (previously referred to as monomorphic or dimorphic, respectively) have been described from Thailand and China and further characterized using molecular sequence data. The first sequences of *Hermatomyces* obtained by Doilom *et al.* (2016) suggested a placement of the genus within *Lophiotremataceae* (*Pleosporales*). Those authors also described two further species, *H. tectonae* and *H. thailandicus*.

© 2018 International Mycological Association

You are free to share - to copy, distribute and transmit the work, under the following conditions:

Attribution: You must attribute the work in the manner specified by the author or licensor (but not in any way that suggests that they endorse you or your use of the work).

Non-commercial: You may not use this work for commercial purposes.

No derivative works: You may not alter, transform, or build upon this work.

For any reuse or distribution, you must make clear to others the license terms of this work, which can be found at <http://creativecommons.org/licenses/by-nc-nd/3.0/legalcode>. Any of the above conditions can be waived if you get permission from the copyright holder. Nothing in this license impairs or restricts the author's moral rights.

Table 1. Living cultures included in this study, their collection details and GenBank accession numbers.

Taxon	Strain (herbarium collection)	Country of origin	Host	GenBank accession numbers					Reference
				ITS	LSU	TEF1- α	RPB2	TUB	
<i>Fungal sp.</i>	ARIZ:PS0053	Panama	<i>Apeiba membranacea</i>	KU977564	-	-	-	-	Unpublished
<i>Anteaelephantroma brunneosporum</i>	CBS 123095	France	<i>Salix sp.</i>	LC194474	-	-	-	-	Hashimoto et al. (2017)
<i>Byssolophis sphaericoides</i>	IFRDCC 2053	unknown	unknown	-	GU301805	-	-	-	Zhang et al. (2009)
<i>H. bifurcatus</i>	CCF 5899 (PRM 946196)	Panama	unknown shrub	LS398262	LS398262	LS398416	LS398343	LS398441	This study
<i>H. bifurcatus</i>	CCF 5900 (PMA 116075)	Panama	unknown shrub	LS398263	LS398263	LS398417	LS398344	LS398442	This study
<i>H. chiangmaiensis</i>	MFLUCC 16-2817	Thailand	<i>Pandanus sp.</i>	-	KY559394	-	-	-	Tibpromma et al. (2017)
<i>H. chromolaenae</i>	MFLUCC 16-2818	Thailand	<i>Chromolaena odorata</i>	-	KY559393	-	-	-	Tibpromma et al. (2017)
<i>H. constrictus</i>	CCF 5904 (PMA 116076, PRC 4107)	Panama	<i>Bauhinia cumananensis</i>	LS398264	LS398264	LS398418	LS398345	LS398443	This study
<i>H. indicus</i>	MFLUCC 14-1143	Thailand	<i>Tectona grandis</i>	KU144920	KU764692	KU872754	KU712488	-	Doilom et al. (2017)
<i>H. indicus</i>	MFLUCC 14-1144	Thailand	<i>Tectona grandis</i>	KU144921	KU764693	KU872755	KU712489	-	Doilom et al. (2017)
<i>H. indicus</i>	MFLUCC 14-1145	Thailand	<i>Tectona grandis</i>	KU144922	KU764694	KU872756	KU712490	-	Doilom et al. (2017)
<i>H. iriomotensis</i>	KT 2016-1	Japan	woody plant	LC194483	LC194367	LC194394	LC194449	-	Hashimoto et al. (2017)
<i>H. krabiensis</i>	MFLUCC 16-0249	Thailand	<i>Pandanus odorifer</i>	KX525750	KX525742	KX525758	KX525754	-	Tibpromma et al. (2016)
<i>H. megasporus</i>	CCF 5897 (PRM 946198)	Panama	unknown shrub	LS398265	-	LS398419	LS398346	LS398444	This study
<i>H. megasporus</i>	CCF 5898 (PMA 116077)	Panama	unknown shrub	LS398266	LS398266	LS398420	-	LS398445	This study
<i>H. nabanheensis</i>	KUMCC 16-0149	P.R. China	<i>Pandanus sp.</i>	KY766058	KY766059	KY766061	-	-	Hyde et al. (2017)
<i>H. pandanicolus</i>	MFLUCC 16-0251	Thailand	<i>Pandanus odorifer</i>	KX525751	KX525743	KX525759	KX525755	-	Tibpromma et al. (2016)
<i>H. reticulatus</i>	CCF 5893 (PRM 946199)	Panama	unknown tree	LS398267	LS398267	LS398421	LS398347	LS398446	This study
<i>H. reticulatus</i>	CCF 5905 (PMA 116078)	Panama	unknown tree	LS398268	LS398268	LS398422	LS398348	-	This study
<i>H. reticulatus</i>	MFLUCC 15-0843	Thailand	woody plant	KX259521	KX259523	KX259527	KX259529	-	Hyde et al. (2016)
<i>H. saikhuensis</i>	MFLUCC 16-0266	Thailand	<i>Pandanus odorifer</i>	KX525748	KX525740	KX525756	KX525752	-	Tibpromma et al. (2016)
<i>H. saikhuensis</i>	MFLUCC 16-0267	Thailand	<i>Pandanus odorifer</i>	KX525749	KX525741	KX525757	KX525753	-	Tibpromma et al. (2016)
<i>H. sphaericoides</i>	CCF 5896 (PRC 4103)	Panama	unknown liana	LS398271	-	LS398425	LS398351	LS398448	This study
<i>H. sphaericoides</i>	KZP 470 (UCH)	Panama	unknown liana	LS398274	-	LS398428	LS398353	LS398451	This study
<i>H. sphaericoides</i>	CCF 5908 (PMA 116079)	Panama	unknown tree	LS398273	LS398273	LS398427	LS398352	LS398450	This study
<i>H. sphaericoides</i>	CCF 5907 (PRM 946200)	Panama	unknown tree	LS398272	-	LS398426	-	LS398449	This study
<i>H. sphaericoides</i>	CCF 5895 (PRC 4102)	Panama	<i>Astrocaryum standleyanum</i>	LS398270	LS398270	LS398424	LS398350	LS398447	This study

Table 1. (Continued).

Taxon	Strain (herbarium collection)	Country of origin	Host	GenBank accession numbers						Reference
				ITS	LSU	TEF1- α	RPB2	TUB	TUB	
<i>H. sphaericus</i>	CCF 5894 (PRC 4100)	Panama	Areaceae	LS398277	LS398277	LS398429	LS398354	LS398452	This study	
<i>H. sphaericus</i>	CCF 5901 (PRC 4104)	Panama	unknown liana	LS398278	-	LS398430	LS398355	LS398453	This study	
<i>H. sphaericus</i>	CCF 5902 (PRC 4106)	Panama	unknown liana	LS398279	LS398279	-	-	-	This study	
<i>H. sphaericus</i>	KZP455 (PRC 4116)	Panama	<i>Fabaceae</i>	LS398275	LS398275	-	-	-	This study	
<i>H. sphaericus</i>	KZP469 (PRC 4117)	Panama	unknown tree	LS398276	-	-	-	-	This study	
<i>H. sphaericus</i>	CCF 5911 (PMA 116080)	Panama	unknown tree	LS398281	LS398281	LS398431	LS398356	LS398454	This study	
<i>H. sphaericus</i>	CCF 5914 (PMA 116081)	Panama	unknown tree	LS398283	LS398283	LS398432	LS398357	LS398455	This study	
<i>H. sphaericus</i>	CCF 5916 (PRM 946201)	Panama	unknown liana	LS398284	LS398284	LS398433	LS398358	LS398456	This study	
<i>H. sphaericus</i>	CCF 5917 (PMA 116082)	Panama	unknown tree	LS398285	-	-	-	-	This study	
<i>H. sphaericus</i>	KZP 460 (PRC 4105)	Panama	unknown tree	LS398286	LS398286	-	-	-	This study	
<i>H. sphaericus</i>	KZP 462 (UCH)	Panama	unknown tree	LS398287	LS398287	LS398434	LS398359	LS398457	This study	
<i>H. sphaericus</i>	CCF 5906 (PMA 116085)	Panama	unknown liana	LS398280	-	-	-	-	This study	
<i>H. sphaericus</i>	KZP 441 (UCH)	Panama	<i>Guazuma ulmifolia</i>	LS398282	-	-	-	-	This study	
<i>H. tectonae</i>	MFLUCC 14-1140	Thailand	<i>Tectona grandis</i>	KU144917	KU764695	KU872757	KU712486	-	Doilom et al. (2017)	
<i>H. tectonae</i>	MFLUCC 14-1141	Thailand	<i>Tectona grandis</i>	KU144918	KU764696	KU872758	-	-	Doilom et al. (2017)	
<i>H. tectonae</i>	MFLUCC 14-1142	Thailand	<i>Tectona grandis</i>	KU144919	KU764697	-	KU712487	-	Doilom et al. (2017)	
<i>H. tucumanensis</i>	CCF 5912 (UCH)	Panama	unknown tree	LS398288	LS398288	LS398435	LS398360	LS398458	This study	
<i>H. tucumanensis</i>	CCF 5913 (PMA 116083)	Panama	unknown tree	LS398289	LS398289	LS398436	LS398361	LS398459	This study	
<i>H. tucumanensis</i>	CCF 5915 (PRM 946202)	Panama	<i>Guazuma ulmifolia</i>	LS398290	LS398290	LS398437	LS398362	LS398460	This study	
<i>H. verrucosus</i>	CCF 5892 (PRM 946203)	Panama	unknown tree	LS398291	LS398291	LS398438	LS398363	LS398461	This study	
<i>H. verrucosus</i>	CCF 5903 (PMA 116084)	Panama	unknown liana	LS398292	LS398292	LS398439	LS398364	LS398462	This study	
<i>Lophiotrema neoarundinaria</i>	KT 856	Japan	<i>Phyllostachys bambusoides</i>	AB524786	-	-	-	AB524848	Tanaka et al. (2009)	
<i>Lophiotrema neoarundinaria</i>	KT 2200	Japan	<i>Phyllostachys bambusoides</i>	AB524787	-	-	-	-	Tanaka et al. (2009)	
<i>Lophiotrema vagabundum</i>	CBS 113975	Sweden	<i>Epilobium angustifolium</i>	LC194502	-	LC194415	FJ795461	-	Hashimoto et al. (2017)	

Abbreviations: **CBS**: Westerdijk Fungal Biodiversity Institute, Utrecht, The Netherlands; **CCF**: Culture Collection of Fungi, Charles University, Prague, Czech Republic; **IFRDCC**: International Fungal Research & Development Centre Culture Collection, Chinese Academy of Forestry, Kunming, China; **KT**: Kazuaki Tanaka, Hirotsaki, Japan; **KUMCC**: Kunming Institute of Botany Culture Collection, Kunming, China; **MFLUCC**: Mae Fah Luang University Culture Collection, Chiang Rai, Thailand; **PMA**: Herbarium of the University of Panama, Panama City, Panama; **UCH**: Herbarium of the Antonomous University of Chiriquí, David, Panama; **PRC**: Herbarium of the Charles University, Prague, Czech Republic; **PRM**: Herbarium of the National Museum, Prague, Czech Republic.

Additionally, other species, notably *H. chiangmaiensis*, *H. chromolaenae*, *H. krabiensis*, *H. pandanicola*, *H. saikhuensis*, and *H. subiculosus*, have been described from single isolates obtained from rotten plant material (Hyde *et al.* 2016, Tibpromma *et al.* 2016, 2017). Hyde *et al.* (2016) synonymized *Scyphostroma mirum* (Starbäck 1899) with *Subicularium reticulatum* (Farr & Goos 1989) and combined them into *H. mirum*. More recently, the family *Hermatomycetaceae* was validated and reintroduced to accommodate the single genus *Hermatomyces* and two other species, *H. iriomotensis* and *H. nabanheensis*, described from Japan and China, respectively (Hashimoto *et al.* 2017, Hyde *et al.* 2017).

Some *Hermatomyces* species, such as *H. sphaericus* or *H. tucumanensis*, are apparently pantropical and quite common, while others are locally restricted and known so far only from the type or very few localities. Species introduced during the pre-molecular era were described based on distinct morphological features, but in contrast the taxonomic novelties introduced in recent years seem to lack thorough phenotypic analyses and descriptions. The plant species on which they occur and the areas of origin were emphasized for all recently described *Hermatomyces* species together with results of molecular analyses and minute differences in morphology (Doilom *et al.* 2016, Tibpromma *et al.* 2016).

In the course of surveys of saprobic microfungi conducted in Panama, numerous collections of *Hermatomyces* were made on a variety of plant debris. Due to its position along the Central American isthmus, Panama is a representative region of the Neotropics that has been relatively well explored in terms of its fungal biodiversity (Piepenbring 2006, 2007) but where hermatomyces-like fungi were previously unknown. The aim of this study is to provide an in-depth overview of the species of this genus based on morphological and molecular data obtained from freshly collected material as well as herbarium specimens. Information on known distribution areas and substrates are compiled and revised in order to elucidate their importance for species delimitation.

MATERIALS AND METHODS

Specimens and morphological studies

Specimens were collected during fieldwork carried out in the provinces of Chiriquí and Bocas del Toro, western Panama, in July 2016 and 2017. Rotten twigs and stems of various plant species showing *Hermatomyces* colonies were recognized in the field with a hand lens ($\times 16$ magnification) and further observed under a dissecting microscope for morphological examination and isolation into pure culture. Lenticular conidia from colonies were first picked up using a sterile needle and placed on malt extract agar (MEA) or potato carrot agar (PCA). Further transfers and cultivation were also performed on PCA and potato dextrose agar (PDA) at room temperature (23–25 °C). To induce sporulation, selected isolates were also grown on water agar with sterile wooden toothpicks. Sometimes, sporodochia of different morphotypes were found close to each other on the same substrate. In such cases the sporodochia used for isolation in culture were marked and preparations for light microscopy were then made from these and nearby conidiomata. Conidia were

mounted in water, Melzer's reagent, lactic acid or lacto-cotton blue and examined using differential interference contrast on an Olympus BX–51 (Olympus, Tokyo) with a digital camera Olympus DP72 (Olympus, Tokyo). Colonies on the natural substrates were measured under a calibrated Olympus SZ61 stereomicroscope. Microscopic measurements are reported as the mean \pm standard deviation of values resulting from 50 measurements of structures mounted in the same reagents. Measurements were analysed using one-way ANOVA with nonparametric Kruskal-Wallis test in PAST v2.07 (Hammer *et al.* 2001). Holotype specimens are deposited in PMA (University of Panama Herbarium, Panama) and paratypes in UCH (Autonomous University of Chiriquí Herbarium, Panama) and PRM (Herbarium of the Prague National Museum, Czech Republic). Non-type specimens were deposited in PRC (Herbarium of the Charles University, Prague, Czech Republic). Further specimens were borrowed from the US National Fungus Collection (BPI), Royal Botanic Gardens Kew (K(M)–IMI), and PRM for comparison and observation of conidial structures.

SEM microscopy

Scanning electron microscopy was performed on a JEOL-6380 LV microscope (JEOL, Tokyo). Pieces of colonies (3 \times 3 mm) from the natural substrate were fixed in osmium tetroxide vapors for 2 w at 5–10 °C and gold-coated in Bal-Tec SCD 050 sputter coater (Bal-Tec, Balzers, Liechtenstein). The specimens were observed with a spot size of 38–45 μ m and accelerating voltage of 20–25 kV.

DNA extraction, PCR amplification and sequencing

DNA was extracted from 2-week old cultures grown on MEA using a Zymo Research Fungal/Bacterial Kit (Zymo Research, Orange, CA). Nuclear rDNA containing the ITS1-5.8S-ITS2 and the highly variable D1/D2 domains of the 28S regions, subsequently referred here to a ITS and LSU, was amplified with primer sets ITS1F/NL4 (White *et al.* 1990, O'Donnell 1993). Three fragments of protein-coding markers were also amplified; elongation factor 1 α (EF-1 α), RNA polymerase II second largest subunit (RPB2) and β -tubulin (β -TUB). The EF-1 α fragment was amplified with primer set 983F/2218R (Rehner & Buckley 2005), RPB2 with RPB2-5F/FRPB2-7cR (Liu *et al.* 1999), and β -TUB with T1/T22 (O'Donnell & Cigelnik 1997). The PCR products were viewed by electrophoresis on 1 % (w/v) TAE agarose gel stained with ethidium bromide. The PCR products were purified with the Gel/PCR DNA Fragments Extraction Kit (Geneaid Biotech, Bade City, Taiwan). Both strands of the PCR fragments were sequenced with the primers used for amplification at the Sequencing Laboratory of the OMICS Core Facility, BIOCEV (Vestec, Czech Republic). The widely used 18S rDNA region (Tibpromma *et al.* 2016, Hashimoto *et al.* 2017) was not amplified because of limited variability; all available *Hermatomyces* sequences from GenBank were found to differ only in three indels.

Taxon sampling and phylogenetic analyses

The closest hits and sequences from *Hermatomyces* species were selected from previous phylogenetic studies (Doilom *et*

Table 2. Characteristics of alignments of studied gene regions and the models adopted for Bayesian analyses.

DNA region	#sequences	#nucleotide sites	#parsimony informative	#variable	Model (BIC criterion)
ITS	47	467	102	135	TIM2ef+G
LSU	37	513	25	43	TrNef+I
RPB2	43	1011	211	273	TrNef+G
EF1- α	45	872	121	165	TrN+I+G
β -TUB	25	615	112	205	TrNef+I

al. 2016, Hyde *et al.* 2016, Tibpromma *et al.* 2016, Hashimoto *et al.* 2017, Hyde *et al.* 2017) and used to build datasets. Details of strains and sequences used are listed in Table 1. Five separate datasets (ITS, LSU, EF1- α , RPB2, β -TUB) were assembled and aligned using MAFFT algorithms implemented in Geneious v. 6.1.5 (Biomatters, Auckland) and manually edited in the same software. The best-fit substitution model for each gene was determined using the Bayesian information criterion in jModeltest v. 2.1.5 (Darriba *et al.* 2012) and the selected models for the ITS, LSU, EF1- α , RPB2 and β -TUB regions including number of variable and parsimony positions are summarized in Table 2. The five datasets were tested for combinability by using the partition homogeneity test (Farris *et al.* 1994) implemented in PAUP* v. 4.0b10 (Swofford 2002), which showed that there was significant incongruence among the datasets. Phylogenetic analyses were performed by Bayesian inference using MrBayes v. 3.2 (Ronquist *et al.* 2012) and Maximum likelihood (ML) running on the RAxML Web Server v. 7.7.1 (Stamatakis *et al.* 2008). For Bayesian analyses, two independent runs of 4–6 M generations were run sampling every 100th generation. The first 25 % of samples were discarded as burn-in and the remaining trees were used to compute a 50 % majority rule consensus tree with posterior probabilities (PP) as Bayesian branch support. The average standard deviation of split frequencies estimating convergence reached the level of 0.003–0.006 at the end of analyses. The GTRCAT approximation implemented in the ML analysis and nonparametric bootstrapping (BS) with 1000 replicates were used for branch support.

Bayesian species tree analyses were performed with *BEAST v. 2.4.8 (Bouckaert *et al.* 2014), which uses multilocus data to simultaneously co-estimate gene trees embedded within a species tree under a coalescent model. Although *BEAST does not require that each gene alignment contains the same number of sequences, only 44 samples represented by at least three regions were included. The mapping of each sample to the appropriate species was based on single-gene phylogenies. BEAUTi v. 2.4.8 (Bouckaert *et al.* 2014) was used to create the XML-formatted input files for *BEAST using the Gamma category count with shape and proportion of invariant sites obtained from jModeltest. Site models, clock models and trees were unlinked for all regions. Relaxed log normal molecular clock model with birth-death model and gamma-distributed population sizes for the species-tree prior and a piecewise linear population size model with a constant root were selected with default values used for remaining

priors. The analysis was run for 50 M generations sampling every 5000th generation. Convergence and effective sample size (EES) were assessed for each parameter using Tracer v. 1.5 (Rambaut & Drummond 2009). Since the ESS of all parameters was above 200, the first 20 % of trees were discarded as burn-in. A maximum clade credibility tree with the 95 % highest probability density was produced by using TreeAnnotator version v. 2.4.8 (Bouckaert *et al.* 2014) and visualized in FigTree (<http://tree.bio.ed.ac.uk/software/figtree>). DensiTree v. 2.4.8 (Bouckaert *et al.* 2014) was used to visualize the posterior distribution of the species trees.

RESULTS

Five DNA regions (ITS, LSU, EF1- α , RPB2, β -TUB) were sequenced in 30 specimens belonging to eight species of *Hermatomyces*. A good congruence between morphological features and segregation of respective sequences into clades was generally found (Fig. 1). Numerous collections belonging to *H. sphaericus* with just the lenticular conidium type grouped within a well-supported clade together with sequences attributed to *H. chromolaenae* (only in the LSU tree), *H. pandanicola* (except in the EF1- α tree), and *H. saikhuensis* and *H. tectonae* having one or both conidium types. Two collections tentatively identified as *H. subiculosus* (CCF 5893 and CCF 5905) formed a well-supported clade together with sequence data from the type collection of this species. The remaining single conidium type collections differing in size and wall ornamentation of their lenticular conidia grouped into two distinct clades, and described here as *H. sphaericoides* and *H. verrucosus*. Three collections with both conidium types were identified as *H. tucumanensis* and together formed a well-supported clade in all phylogenies. Two collections with unusually large conidia of both types that do not differ from *H. subiculosus* with just one conidium type in their rDNA sequence data but were clearly distinct based on their coding genes are described as *H. megasporus*. Four collections with both conidium types formed two distinct and unrelated clades and are described as *H. bifurcatus* and *H. constrictus*. The majority of these clades were highly supported in the consensus species tree retrieved from the Bayesian analysis of the multilocus dataset (Fig. 2), although conflicts in some clades (most distinct at *H. bifurcatus* and *H. nabanheensis*) indicated that these genes have undergone incomplete lineage sorting.

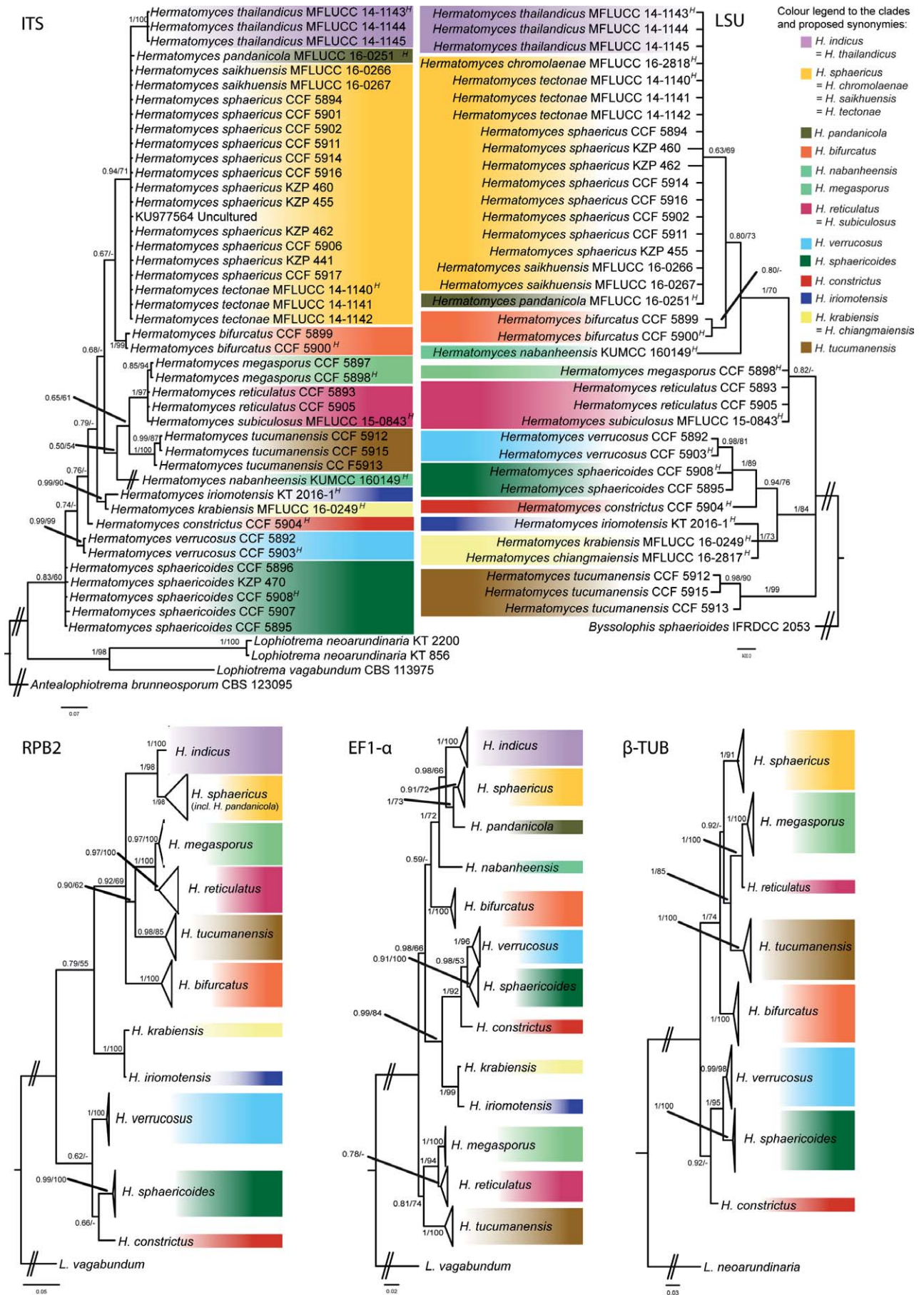


Fig. 1. Phylogenetic trees inferred from Bayesian and ML analyses of the genus *Hermatomyces* based on ITS, LSU, RPB2, EF1-α and β-TUB and including five newly described *Hermatomyces* taxa. Numbers above branches represent PP>0.5 and ML bootstrap support values BS>90 %. Ex-type living cultures are indicated by superscript letter: H – holotype.

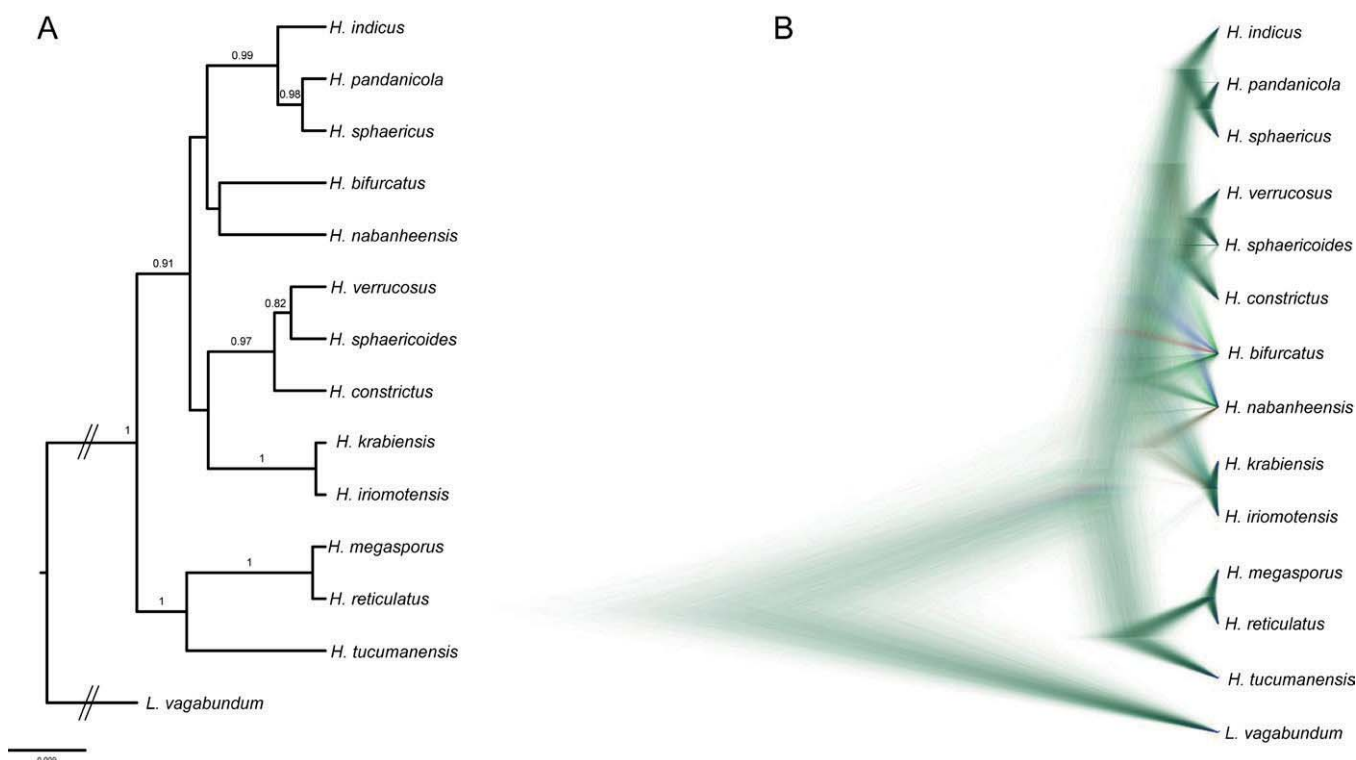


Fig. 2. Species trees from Bayesian analysis of combined dataset of ITS, LSU, RPB2, EF1- α and β -TUB. **A.** Consensus topology resulting from the *BEAST analysis. Numbers above branches represent PP>0.5. **B.** Visualization of 8 000 trees with green lines representing the most likely topologies obtained from DensiTree.

TAXONOMY

Hermatomyces Speg., *Anal. Mus. nac. B. Aires, ser. 3* 13: 445 (1911).

Type species: *Hermatomyces tucumanensis* Speg. 1911.

Classification: *Hermatomycetaceae, Pleosporales, Dothideomycetes*

Notes: The family *Hermatomycetaceae* was recently reintroduced and validly published by Hashimoto *et al.* (2017). Although the family is currently monotypic, similarly to several other families among *Pleosporales*, its delimitation seems to be well justified. Liu *et al.* (2017) analyzed divergence times of all clades within *Dothideomycetes* treated as families or orders and found good support for the majority of them. In the phylogeny presented by Hashimoto *et al.* (2017), the *Hermatomycetaceae* clade rooted comparably deep to the closely related *Anteagloniaceae* and *Lophiotremataceae* suggesting similar divergence times.

Hermatomyces bifurcatus Koukol & G. Delgado, *sp. nov.*
Mycobank MB824244
(Figs 4, 13A, D, G, J, 16B)

Etymology: *bifurcates*, referring to the furcate shape of cylindrical conidia.

Diagnosis: Differs from other species of *Hermatomyces* with two conidium types in the cylindrical conidia with two

bifurcating columns of cells, each arising from a bulbous basal cell and ending in a verrucose and pigmented apical cell.

Type: **Panama:** *Chiriquí Province:* Boquete, Bajo Mono, pipeline trail, along tourist path, 8°49'40.22"N, 82°29'26.11"W, 1720 m a.s.l., on dry rotten twig of a shrub, 9 Jul 2017, O. Koukol KZP353 (PMA 116075 – **holotype**; CCF 5900 – ex-holotype culture).

Description: *Colonies* on the natural substrate forming sporodochial conidiomata, superficial, scattered, more or less circular or oval, mostly non-subiculate, gray-black, consisting of an orbicular, blackish gray, flattened outer zone sometimes with a poorly developed subiculum and a black, glistening, granulose sporulating centre, 300–500 μ m diam. *Mycelium* mostly superficial, composed of a loose or compact network of repent, branched, septate, smooth, locally thick-walled, pale brown to brown hyphae, 3–4 μ m wide; subicular hyphae short, ascending, irregularly geniculate or flexuous, densely packed, anastomosing. *Conidiophores* micronematous or semimacronematous, mononematous, cylindrical, erect, subhyaline or pale brown, smooth or finely verruculose, up to 27 μ m long, 2–4 μ m wide, often corresponding to conidiogenous cells. *Conidiogenous cells* monoblastic, integrated, terminal, determinate, subhyaline to pale brown or brown, cylindrical or slightly subulate, often arising directly on the superficial mycelium and closely packed together at the fertile centre, sphaerical, subsphaerical or ampulliform, 4–6 \times 3–4 μ m. *Conidia* of two types, solitary, dry; lenticular conidia muriform, smooth, broadly ellipsoidal in front view, central

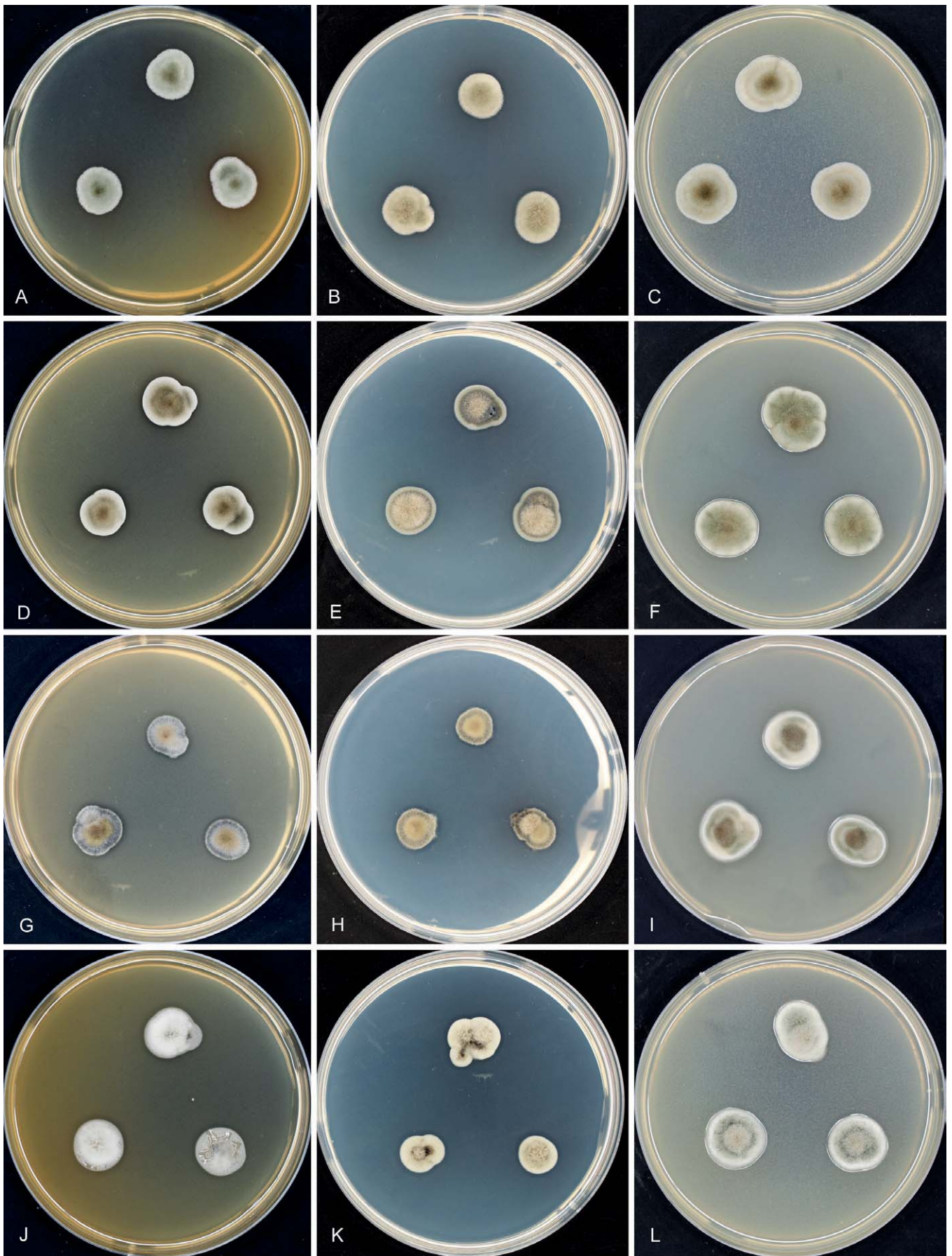


Fig. 3. Morphology of *Hermatomyces* colonies in culture. **A–C.** *H. bifurcatus* (CCF 5899). **D–F.** *H. constrictus* (CCF 5904). **G–I.** *H. megasporus* (CCF 5898). **J–L.** *H. reticulatus* (CCF 5893). **M–O.** *H. sphaericoides* (CCF 5908). **P–R.** *H. sphaericus* (CCF 5894). **S–U.** *H. tucumanensis* (CCF 5913). **V–X.** *H. verrucosus* (CCF 5903). All after 7 d growth at 25 °C on MEA, PCA or PDA (from left to right).

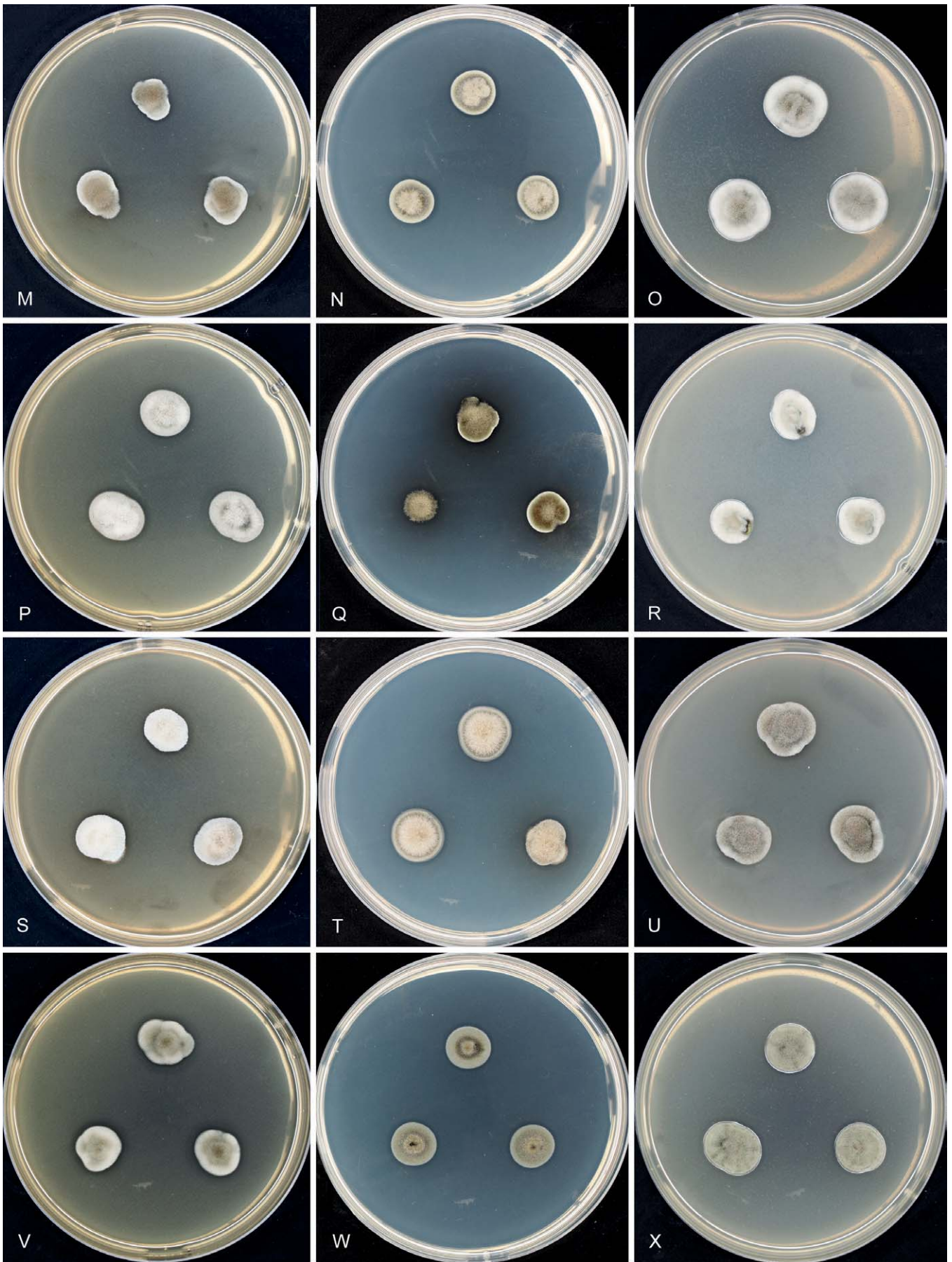


Fig. 3. (Continued).



Fig. 4. *Hermatomyces bifurcatus* (PMA 116075 – holotype). **A.** Colonies on the natural substrate. **B.** Subicular hyphae. **C.** Conidiogenous cells and young lenticular conidium. **D–F.** Cylindrical conidia (stained with lacto-cotton blue at **D**). **G.** Cylindrical and lenticular conidium. **H–K.** Lenticular conidia. Bar A = 500 μ m, B–K = 10 μ m.

cells brown or dark brown to blackish brown, peripheral cells subhyaline to pale brown, forming a wide and distinct ring, ellipsoidal to narrowly oblong or oblong in side view where two distinct adpressed halves can be recognized, each half seen laterally as a row of 4–7 cells, end cells subhyaline to pale brown, middle cells dark brown or blackish brown, (24–)30–36.5(–41) \times (18–)21.5–26(–28) μ m, 14–20.5 μ m thick, L/W = 1.42; cylindrical conidia bifurcated, straight or flexuous, septate, constricted at the septa, (18–)26–33.5(–36) μ m long, consisting of two columns of 3 cells, very rarely 2-celled, basal cells bulbous, globose or subglobose, smooth, hyaline, tightly appressed together, 9–14 \times 13–18.5 μ m, middle and

apical cells diverging, doliiform, cylindrical or subcylindrical, apical cells clavate or doliiform, verrucose, subhyaline or pale brown, apex rounded and dark brown or blackish brown, 7–16 \times 7–12 μ m. *Sexual morph* unknown.

Cultures (Fig. 3A–C): *Colonies* moderately slow growing, reaching on MEA and PCA 14–16 mm diam, and on PDA 12–13 mm after 7 d at 25 $^{\circ}$ C. No sporulation observed after 4 m at 25 $^{\circ}$ C.

Notes: *Hermatomyces bifurcatus* can be distinguished from other species with two conidium types in having colonies with

a poorly developed subiculum and cylindrical conidia with two bifurcating columns of cells each one arising from separate but tightly appressed, bulbous basal cells. The remaining cells diverge upwards and each column ends in a verrucose and pigmented apical cell. A similar ornamentation of the apical cell is present in *H. uniseriatus* (Leão *et al.* 2013) with lenticular conidia almost identical in size, 27–36 µm diameter and 15.5–24 µm thick, but currently without available DNA sequence data. Cylindrical conidia of *H. uniseriatus*, however, differ in consistently having only a single column of 3–4 cells and lacking a pigmented apex. *Hermatomyces iriomotensis* (Hashimoto *et al.* 2017) also shows some resemblance in the overall shape and length of its cylindrical conidia, 20.5–33 µm long and with two slightly diverging columns ending in pigmented cells. Its conidia, however, may consist of two but also of a single column of cells. They are larger in number of septa and cells, the apical ones are smooth while the basal cells are not distinctly bulbous as in *H. bifurcatus*. Phylogenetically, both species are distantly related in all analyses. Together with *H. tucumanensis*, *H. bifurcatus* has the most ellipsoidal conidia known in the genus (Fig. 18).

Additional material examined: **Panama:** Chiriquí Province: Boquete, Bajo Mono, pipeline trail, along tourist path, 8°49'40.22"N 82°29'26.11"W, 1720 m a.s.l., on dry rotten twig of a shrub, 9 Jul. 2017, *O. Koukol* KZP352 (PRM 946196; CCF 5899–living culture).

***Hermatomyces constrictus* Koukol & G. Delgado, sp. nov.**

MycoBank MB824245
(Figs 5, 13B, E, H, K, 16C)

Etymology: *constrictus*, referring to the distinctly constricted septa of the two-celled cylindrical conidia.

Diagnosis: Differs from other species of *Hermatomyces* with two conidium types in the presence of two-celled cylindrical conidia that are distinctly constricted at the central or eccentric septum.

Type: **Panama:** Chiriquí Province: west of Los Algarrobos, path through pastures along Majagua river, 8°29'47.82"N, 82°26'19.721"W, 110 m a.s.l., on rotten stem of *Bauhinia cumanensis* (Fabaceae), 14 Jul. 2017, *O. Koukol* KZP408 (PMA 116076 – holotype; CCF 5904 – ex-type living culture; PRC 4107 – isotype).

Description: Colonies on the natural substrate forming sporodochial, subiculate conidiomata, superficial, scattered, circular or oval, rarely confluent, brown-black, consisting of a velvety, dense, thick, annular, brown sterile mycelial outer zone enclosing a whitish black, glistening, abundantly sporulating centre, circular or oval, with the cylindrical conidia distinct among the lenticular ones, 300–500 µm diam. Mycelium superficial, composed of a compact network of repent, branched, septate, smooth or finely verruculose, pale brown to brown hyphae, 2–4 µm wide; subicular hyphae branched, septate, verrucose to strongly verrucose, locally verruculose or finely verruculose, pale brown to brown, erect, flexuous, undulate or irregularly

geniculate, ascending, branching and rarely anastomosing to form a moderately dense network. *Conidiophores* micronematous, mononematous, cylindrical, hyaline, smooth, up to 21 × 1.5–3 µm, often corresponding to conidiogenous cells. *Conidiogenous cells* monoblastic, integrated, terminal, determinate, often arising directly on the superficial mycelium and closely packed together at the fertile centre, sphaerical, subsphaerical or ampulliform, pale brown to brown, smooth, 4–7 × 3.5–5 µm. *Conidia* of two types, solitary, dry; lenticular conidia muriform, smooth, disc-shaped, broadly ellipsoidal or rarely subglobose in front view, central cells brown to blackish brown or black, peripheral cells hyaline to subhyaline, forming a wide and distinct ring, slightly constricted at the septa or not, ellipsoidal in side view where two distinct adpressed halves can be recognized, each half seen laterally as a row of 6–7 cells, end cells subhyaline, middle cells blackish brown to black, (22–)25.5–29.5(–32) × 19–23.5(–27.5) µm, 14.5–19 µm thick, L/W = 1.29; cylindrical conidia 2-celled, symmetrical or asymmetrical, the upper cell smaller with a central or eccentric septum, distinctly constricted at the septum, guttulate, smooth, straight or flexuous, 37–57 µm long, upper and lower cells long ellipsoidal, ellipsoidal, long ovoid, obclavate, obpyriform or sometimes broadly ovoid, often curved, lower cells (20–)24–30.5(–37) × 12–17 µm, upper cells (16–)20–26(–30) × 8–14 µm, apex more or less rounded or slightly flattened, often slightly attenuated and dark brown or black. *Sexual morph* unknown.

Cultures (Fig. 3D–F): Colonies moderately slow growing reaching on MEA 12–13 mm diam, on PCA 14–16 mm, and on PDA 14–16 mm after 7 d at 25 °C. No sporulation observed after 4 m at 25 °C.

Notes: *Hermatomyces constrictus* is unique among the species with two conidium types in having two-celled cylindrical conidia distinctly constricted at the central or eccentric septum. Hughes (1953) described and depicted similarly shaped cylindrical conidia from K(M)–IMI 39940(e) collected in Ghana that were later redrawn by Ellis (1971). They called them “paraphyses” or “setae” and wrongly considered them to belong to *H. tucumanensis*. That specimen is tentatively identified here as *H. cf. constrictus* but differs in having two but also three-celled conidia, slightly or not constricted at the septa and smaller in size reaching up to 45 µm in length. The upper cells are cylindrical or subcylindrical to broadly ellipsoidal and often widened at the melanized, slightly rounded apex or dumbbell-shaped to use Ellis’s words. This is in contrast to *H. constrictus* where the upper cells are often attenuated at the apex. Therefore, the specimen from Ghana most probably represents a different species.

Additional material examined: **Panama:** Chiriquí Province: Boquete, Bajo Mono, pipe line trail, 8°49'40.22"N 82°29'26.11"W, 1720 m a.s.l., on dry rotten twig of unknown tree, 9 Jul. 2017, *O. Koukol* KZP343 (PRC 4097); Los Algarrobos, path to Majagua river, 8°29'13.86"N 82°26'2.881"W, 105 m a.s.l., on rotten twig of liana, 8 Jul. 2017, *O. Koukol* KZP328 (PRM 946197).

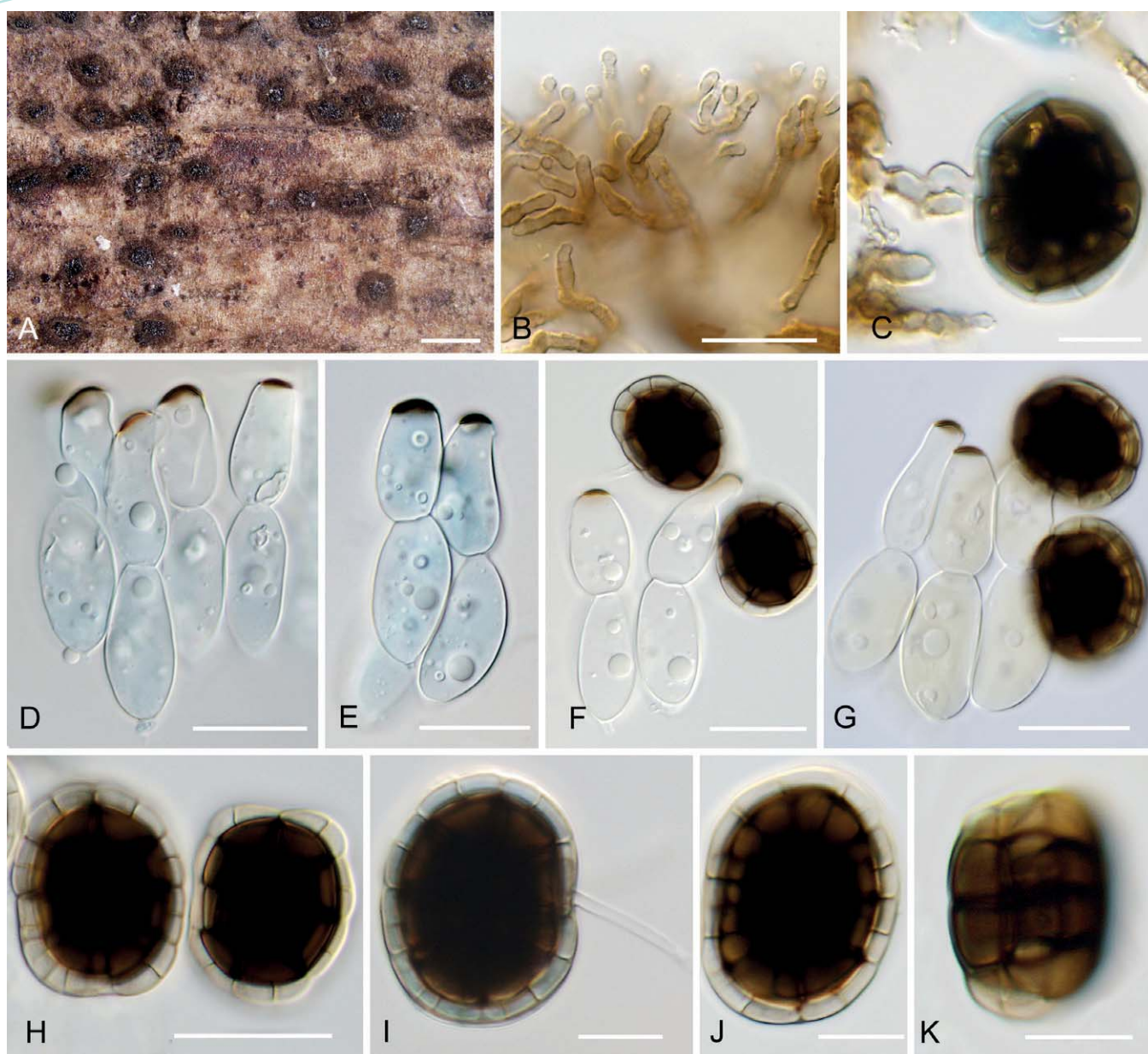


Fig. 5. *Hermatomyces constrictus* (PMA 116076 – holotype). **A.** Colonies on the natural substrate. **B.** Subicular hyphae. **C.** Young lenticular conidium attached to conidiophore (stained with lacto-cotton blue). **D–E.** Cylindrical conidia (stained with lacto-cotton blue). **F–G.** Cylindrical and lenticular conidia. **H, J–K.** Lenticular conidia. **I.** Mature lenticular conidium attached to conidiophore (stained with lacto-cotton blue). Bar A = 500 μ m, B–G, I–K = 10 μ m, H = 20 μ m.

***Hermatomyces megasporus* Koukol & G. Delgado, sp. nov.**

Mycobank MB824246

(Figs 6, 13C, F, I, L, 16H)

Etymology: *megaspores*, referring to the largest cylindrical conidia known in *Hermatomyces*.

Diagnosis: Distinguished from other species of *Hermatomyces* by the larger size of the conidia and from the morphologically close *H. dimorphus* in having cylindrical conidia consisting of two columns each of (5–)6–7(–10) swollen cells, appressed together but sometimes separated or rarely diverging, with apical and subapical cells laterally or apically pigmented and

sometimes forming short, lateral columns around the middle or basal portions of the conidia.

Type: **Panama:** *Chiriquí Province:* Boquete, Bajo Mono, pipe line trail, close to the waterfall, 8°49'34.90"N, 82°29'54.46"W, 1840 m a.s.l., on dry rotten twig of unknown shrub, 9 Jul. 2017, O. Koukol KZP351 (PMA 116077 – holotype; CCF 5898 – ex-holotype living culture).

Description: *Colonies* on the natural substrate forming sporodochial, subiculate conidiomata, superficial, scattered when young, crowded and confluent when older, more or less circular, oval or lobed, dark gray-black, consisting of a well-developed, velvety, dense, thick, annular, dark gray,

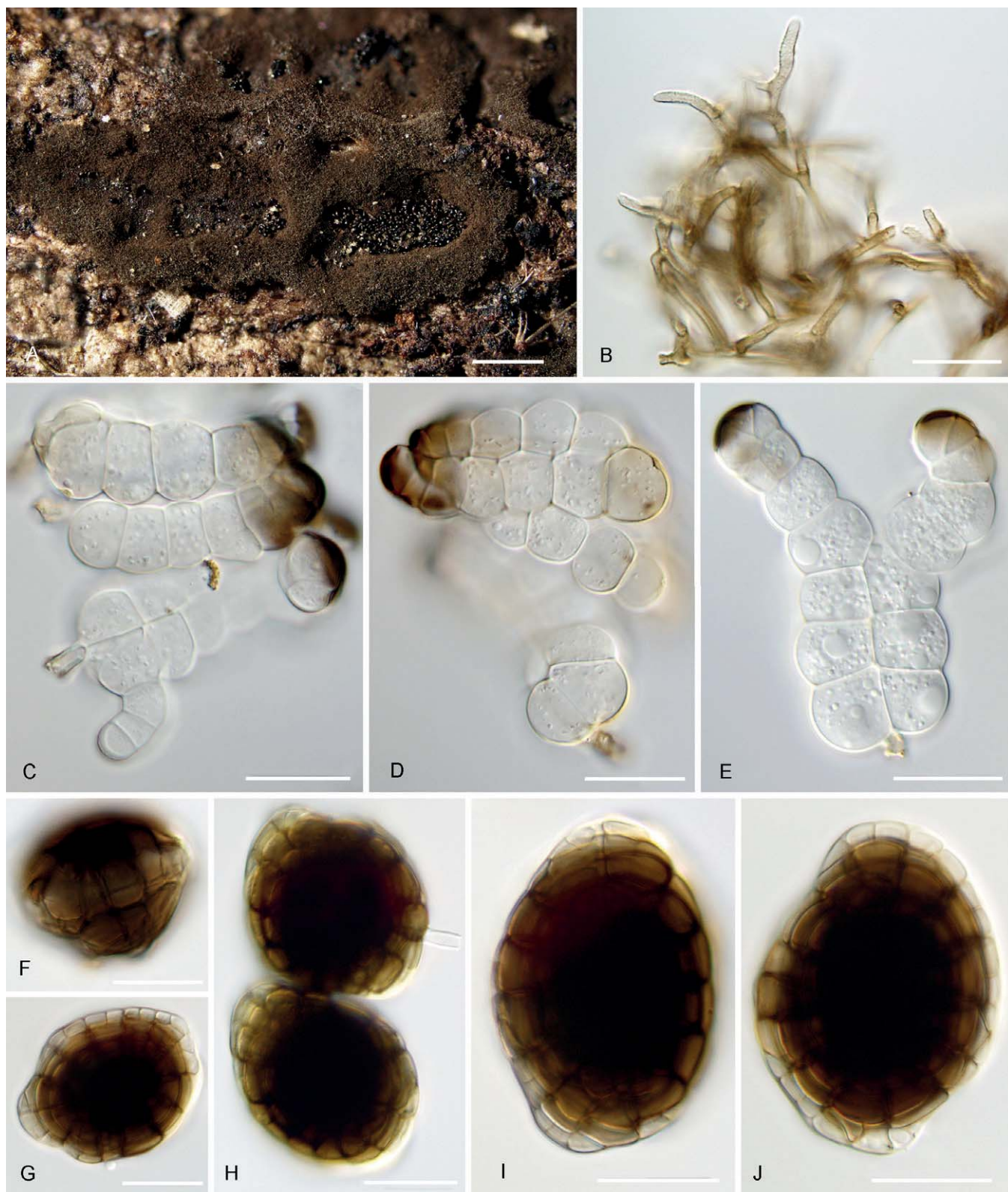


Fig. 6. *Hermatomyces megasporus* (PMA 116077 – holotype). **A.** Colonies on the natural substrate showing well-developed subiculum. **B.** Subicular hyphae. **C–E.** Cylindrical conidia. **F–J.** Lenticular conidia. Bar A = 500 μ m, B–J = 20 μ m.

sterile mycelial outer zone enclosing a black or whitish black, glistening, granulose sporulating centre spotted with white cylindrical conidia, circular, oval or lobed by confluence, forming large patches 5–6 mm long when confluent; young colonies consisting only of black lenticular conidia closely packed in a dome-like centre that remain together when

disturbed and are surrounded by an orbicular, blackish and flattened outer zone; subicular hyphae and cylindrical conidia apparently develop later. *Mycelium* superficial composed of a compact network of repent, branched, septate, smooth or verrucose, locally thick-walled, brown hyphae, 2–4 μ m wide; subicular hyphae undulate, irregularly geniculate or flexuous,

pale brown to brown, smooth or finely verruculose to locally verruculose, verrucose or spinulose, thin or locally thick walled, branching and anastomosing forming a moderately dense network. *Conidiophores* micronematous, mononematous, cylindrical or slightly subulate, hyaline to pale brown, smooth or finely verruculose to verrucose, up to $20 \times 2\text{--}4.5 \mu\text{m}$, often corresponding to the conidiogenous cells. *Conidiogenous cells* monoblastic, integrated, terminal, determinate, subhyaline to pale brown or brown, cylindrical, often arising directly on the superficial mycelium and closely packed together in the fertile centre, sphaerical, subsphaerical or ampulliform, smooth or finely verruculose, $4\text{--}7 \times 3\text{--}5 \mu\text{m}$. *Conidia* of two types, solitary, dry; lenticular conidia muriform, smooth, broadly ellipsoidal, ellipsoidal or disc-shaped in front view, rarely subsphaerical, central cells brown to blackish brown or black, peripheral cells pale brown to brown or hyaline, forming a wide and distinct ring $3\text{--}5 \mu\text{m}$ wide, constricted at the septa, broadly ellipsoidal in side view where two distinct adpressed halves can be recognized, each half seen laterally as a row of $8\text{--}10$ cells, end cells pale brown, middle cells blackish brown or black, often slightly attenuated at both round ends, $(45\text{--})49\text{--}56\text{--}(59) \times (31\text{--})37\text{--}46 \mu\text{m}$, $27\text{--}30 \mu\text{m}$ thick, $L/W = 1.30$; cylindrical conidia straight or flexuous, septate, smooth, subhyaline, $(37\text{--})49.5\text{--}60.5\text{--}(67\text{--}) \times 18\text{--}28\text{--}(32) \mu\text{m}$, consisting of two columns of $(5\text{--})6\text{--}7\text{--}(10)$ swollen cells each, usually appressed together but sometimes separated or rarely diverging, each column with $5\text{--}7$ transverse septa, $10\text{--}19 \mu\text{m}$ at the widest part, constricted at the septa, often with $0\text{--}3$ longitudinal or $0\text{--}2$ oblique septa delimiting smaller cells toward the apex, apical and subapical cells straight, curved or bent to one side, laterally or apically pigmented brown to blackish brown, often a lateral cell is formed and delimited by a longitudinal or oblique septum at the subapical level, protruding and pigmented or not, sometimes short, curved, single columns up to four cells are formed laterally at the middle or basal cells, apical cell rounded or flattened, $(9\text{--})14\text{--}24\text{--}(28) \mu\text{m}$ wide, basal cells $12\text{--}19 \mu\text{m}$ wide. *Sexual morph* unknown.

Cultures (Fig. 3G–I): *Colonies* moderately slow growing reaching on MEA $10\text{--}14$ mm diam, on PCA $10\text{--}12$ mm, and on PDA $17\text{--}18$ mm after 7 d at 25°C . No sporulation observed after 4 m at 25°C .

Notes: *Hermatomyces megasporus* is a morphologically remarkable species with large lenticular conidia and the largest cylindrical conidia among all currently recognized species of the genus. It is comparable to *H. dimorphus* (Rao & de Hoog 1986) in conidial morphology and septation, with cylindrical conidia having transverse, longitudinal and oblique septa in both species. The two species differ, however, in the size and number of columns and cells, with *H. dimorphus* having smaller cylindrical conidia, $15\text{--}40 \times 10\text{--}15 \mu\text{m}$, and four columns, each of seven cells. It also lacks the short, lateral columns of cells sometimes formed around the middle or basal portions of the conidia. Pigmentation usually occurs along a central column or between two opposite columns in side view, and extends beyond the middle of the conidia instead of apically or subapically as in *H. megasporus*. The lenticular conidia, however, are similar in size, reaching $35\text{--}55 \mu\text{m}$ diam in *H. dimorphus* but narrower in side view being only

$15\text{--}20 \mu\text{m}$ thick. Compared to other known *Hermatomyces* species, both *H. megasporus* and *H. dimorphus* show a similar trend in a substantial increase in the number of cells connected with their decrease in size.

Additional material examined: **Panama:** Chiriquí Province: Boquete, Bajo Mono, pipe line trail, $8^\circ49'40.22''\text{N}$ $82^\circ29'26.11''\text{W}$, 1720 m a.s.l., on rotten twig of unknown shrub, 19 Jul. 2016, O. Koukol KZP300 (PRM 946198, CCF 5897–living culture).

***Hermatomyces reticulatus* (M.L. Farr & Goos.)
Koukol & G. Delgado, comb. nov.**

Mycobank MB824247

(Figs 7, 14A, D, G, J, 17A)

Basionym: *Subicularium reticulatum* M.L. Farr & Goos, *Mem. N. Y. bot. Gdn.* **49**: 66 (1989)

Synonym: *Hermatomyces subiculosus* C.G. Lin et al., *Fungal Diversity* **80**: 73 (2016); as '*subiculosa*'.

Type: **Venezuela:** Miranda State: Parque Nacional Guatopo, road between Santa Teresa and Los Alpes, on wood, 29 Jun 1971, K.P. Dumont, J.H. Haines & C. Blanco (BPI 1100692 – holotype).

Description: *Colonies* on the natural substrate in the form of sporodochial, subiculate conidiomata, superficial, scattered or crowded and confluent, more or less circular, oval or lobed, brown-black, consisting of a well-developed, velvety, dense, thick, annular, grayish brown sterile mycelial outer zone enclosing a black, glistening, abundantly sporulating granulose centre, circular, oval or lobed by confluence, where conidia are compactly appressed, though easily liberated when touched, $250\text{--}750 \mu\text{m}$ diam when single, forming large patches on the substrate $4\text{--}6$ mm long when confluent. *Mycelium* superficial, composed of a compact network of repent, branched, septate, smooth or verruculose, locally thick walled, brown to dark brown hyphae, $2\text{--}4.5 \mu\text{m}$ wide, subicular hyphae septate, branched, flexuous, undulate or irregularly geniculate, pale brown to brown, finely verruculose to locally smooth or verrucose, profusely branching, curving and anastomosing forming a dense network. *Conidiophores* micronematous or semimacronematous, mononematous, cylindrical, smooth or finely verruculose, pale brown, up to $13 \mu\text{m}$ long, $4\text{--}5 \mu\text{m}$ wide, often corresponding to conidiogenous cells. *Conidiogenous cells* monoblastic, integrated, terminal, cylindrical, determinate, subhyaline to pale brown, often arising directly on the superficial mycelium and closely packed together at the fertile centre, sphaerical, subsphaerical or ampulliform, $5\text{--}9 \times 3\text{--}5 \mu\text{m}$. *Conidia* of one type, globose, subglobose, broadly ellipsoidal, oblong or somewhat irregular in front view, ellipsoidal or narrowly oblong to oblong in side view where two distinct adpressed halves can be recognized, each half seen laterally as a row of $5\text{--}9$ cells, sometimes with a deep constriction between halves, end cells and cells along the constriction often pale brown, muriform, with transverse, longitudinal and oblique septa, 4-celled (rarely 3-celled), subhyaline to pale brown and verruculose when young, dark brown to blackish brown and verrucose at maturity, $(29.5\text{--})3\text{--}40\text{--}(45) \times 25\text{--}34\text{--}(41) \mu\text{m}$, $22\text{--}30 \mu\text{m}$ thick, $L/W = 1.20$. *Sexual morph* unknown.

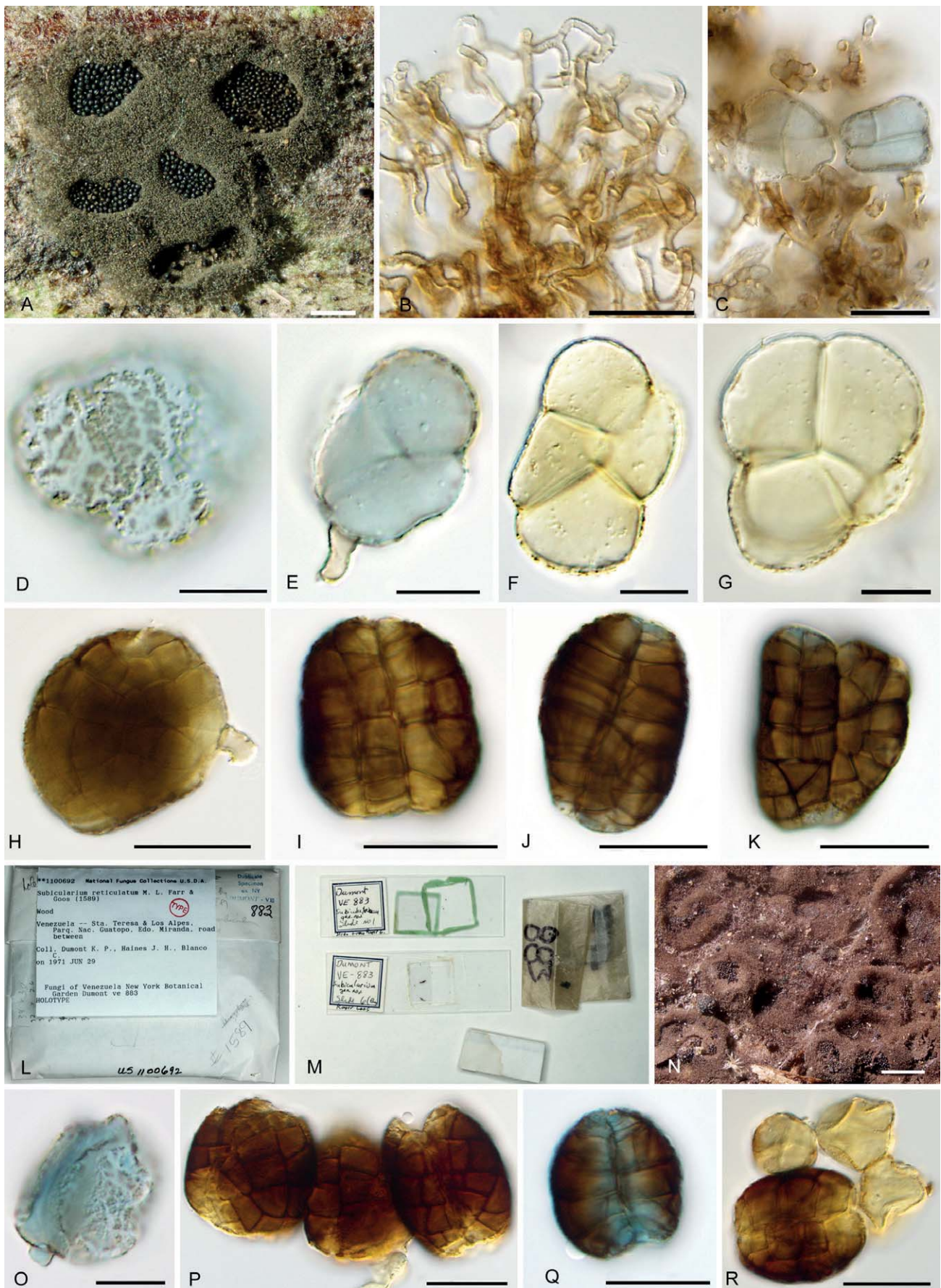


Fig. 7. *Hermatomyces reticulatus* (PMA 116078 – holotype). **A.** Colonies on the natural substrate showing well-developed subiculum. **B.** Subicular hyphae. **C–G.** Young lenticular conidia (stained with lacto-cotton blue at C–E). **H–K.** Mature lenticular conidia. **L–M.** Envelope and content of the holotype of *Subicularium reticulatum* (BPI 1100692). **N.** Colonies on the natural substrate. **O.** Young conidium (stained with lacto-cotton blue). **P–R.** Mature conidia (stained with lacto-cotton blue at Q). Bar A = 500 μ m, B–G = 10 μ m, H–K = 20 μ m, N = 500 μ m, O = 10 μ m, P–R = 20 μ m.

Cultures (Fig. 3J–L): Colonies moderately slow growing reaching on MEA 14–15 mm diam, on PCA 10–12 mm, and on PDA 12–13 mm after 7 d at 25 °C. No sporulation observed after 4 m at 25 °C.

Notes: The presence of lobed lenticular conidia that are 4-celled when young, verrucose, dark brown and variably shaped at maturity with numerous oblique septa and lacking the paler ring of peripheral cells, makes *H. reticulatus* distinct from other species of *Hermatomyces* with one conidium type. Another distinct feature is the formation of a very compact layer of conidia in the sporulating centre of the colony caused by the irregular shape of the conidia (Fig. 14G). This species was first described by Farr & Goos (1989) from a piece of wood in Venezuela as *S. reticulatum*. A re-examination of the holotype (BPI 1100692) revealed a fungus morphologically identical to our collections from Panama in the shape and septation of the conidia, particularly the presence of longitudinal and oblique septa (Fig. 6O–R). Conidia are also similar in size having 28–35 µm long and 26–32 µm wide.

Molecular sequence data retrieved from the Panama collections clustered in all phylogenies with ex-type sequences of *H. subiculosus* described by Hyde et al. (2016) from decaying wood in Thailand, but their phenotypic characteristics were slightly different. Conidia in the holotype are smaller, 15–35 µm long and 18–30 µm wide at the broadest part (Hyde et al. 2016), but considering their identical sequences, this phenotypic difference can be attributed to intraspecific variability. Hyde et al. (2016) suggested the monotypic *Subicularium* to be a later synonym of *Hermatomyces* and also considered *S. reticulatum* a later synonym of *Scyphostroma mirum*. Based on our morphological study of the holotype of *Subicularium reticulatum* and the results of molecular analyses, we make the new combination *H. reticulatus* and reduce *H. subiculosus* to synonymy.

Additional material examined: **Panama:** Chiriquí Province: west of Los Algarrobos, path through pastures along Majagua river, 8°29'47.82"N 82°26'19.721"W, 110 m a.s.l., on rotten twig of unknown tree, 8 Jul. 2016, *O. Koukol KZP191* (PRM 946199; CCF 5893 – living culture); *ibid.*, on dry rotten twig of unknown tree, 14 Jul, 2017, *O. Koukol KZP409* (PMA 116078; CCF 5905 – living culture); *ibid.* on wet rotten liana, 14 Jul, 2017, *O. Koukol KZP414* (PRC 4098; CCF 5910 – living culture).

***Hermatomyces sphaericoides* Koukol & G. Delgado, sp. nov.**

Mycobank MB824248

(Figs 8, 14B, E, H, K, 17B)

Etymology: *sphaericoides*, recalling *H. sphaericus*, to which it is morphologically similar.

Diagnosis: Differs from the morphologically close *H. sphaericus* in the consistently dark brown to blackish brown, finely verruculose lenticular conidia, ellipsoidal in side view and with an inconspicuous or narrow outer ring of peripheral cells.

Type: **Panama:** Chiriquí Province: west of Los Algarrobos, path through pastures along Majagua river, 8°29'47.82"N 82°26'19.721"W, 110 m a.s.l., on dry rotten twig of unknown tree, 14 Jul. 2017, *O. Koukol KZP412* (PMA 116079 – holotype; CCF 5908 – ex-holotype living culture).

Description: Colonies on the natural substrate forming sporodochial, subiculate conidiomata, superficial, more or less circular, oval or lobed, scattered or crowded and confluent, dark gray-black, consisting of a velvety, dense, thick, annular, dark gray, sterile mycelial outer zone enclosing a black, glistening, flattened, abundantly sporulating granulose centre, circular, oval or lobed by confluence, where conidia are easily liberated when touched, 400–700 µm diam when solitary, up to 1500 µm long when confluent. *Mycelium* superficial, composed of a compact network of repent, branched, septate, smooth, pale brown or brown hyphae, 1.5–3.5 µm wide, subicular hyphae septate, pale brown, brown in mass, branched, mostly smooth but locally verrucose or sometimes finely verruculose, flexuous, undulate or strongly geniculate, branching and anastomosing to form a dense network. *Conidiophores* inconspicuous, rarely seen, up to 14 µm long and 3.5 µm wide, often corresponding to conidiogenous cells. *Conidiogenous cells* monoblastic, determinate, arising directly on the superficial mycelium and closely packed together at the fertile centre, sphaerical, subsphaerical, ellipsoidal or ampulliform, pale brown, smooth or finely verruculose, 3–7 × 2–5 µm. *Conidia* of one type, solitary, dry, lenticular, globose, subglobose, broadly ellipsoidal or rarely disc-shaped in front view, muriform, sometimes slightly constricted at the septa, finely verruculose, central cells dark brown to blackish brown, peripheral cells narrow and brown, rarely pale brown, ellipsoidal or oblong in side view where two distinct adpressed halves can be recognized, each half seen laterally as a row of 5–7 cells, end cells pale brown to brown, middle cells dark brown to blackish brown, with a narrow, sometimes deep constriction between them, (20.5–)24.5–28(–31) × (20–)23–26(–29) µm, (15–)19–25 µm thick, L/W = 1.08, L/T = 1.26. *Sexual morph* unknown.

Cultures (Fig. 3M–O): Colonies moderately slow growing reaching on MEA 12–13 mm diam, on PCA 14–16 mm, and on PDA 14–16 mm after 7 d at 25 °C. Sporulation on PDA late, within 4 m at 25 °C and observed only in one (KZP470) out of five strains. Lenticular conidia (22.5–)24.5–28(–30) × 22.5–26.5(–29) µm and 19–23 µm thick.

Notes: *Hermatomyces sphaericoides* is hardly distinguishable from *H. sphaericus* on morphological grounds, as indicated by the specific epithet. The two species are, however, phylogenetically distinct and collections of both taxa grouped distantly in all phylogenies (Figs 1–2). Morphologically, in contrast to *H. sphaericus*, the conidia of *H. sphaericoides* are consistently dark brown to blackish brown and finely verruculose with the outer ring of peripheral cells inconspicuous or narrow and brown, sometimes only slightly constricted at the septa. Further differences can be found in side view where conidia of *H. sphaericoides* tend to be more ellipsoidal (L/T=1.26) compared to broadly ellipsoidal in *H. sphaericus* (L/T=1.22) although this difference was not

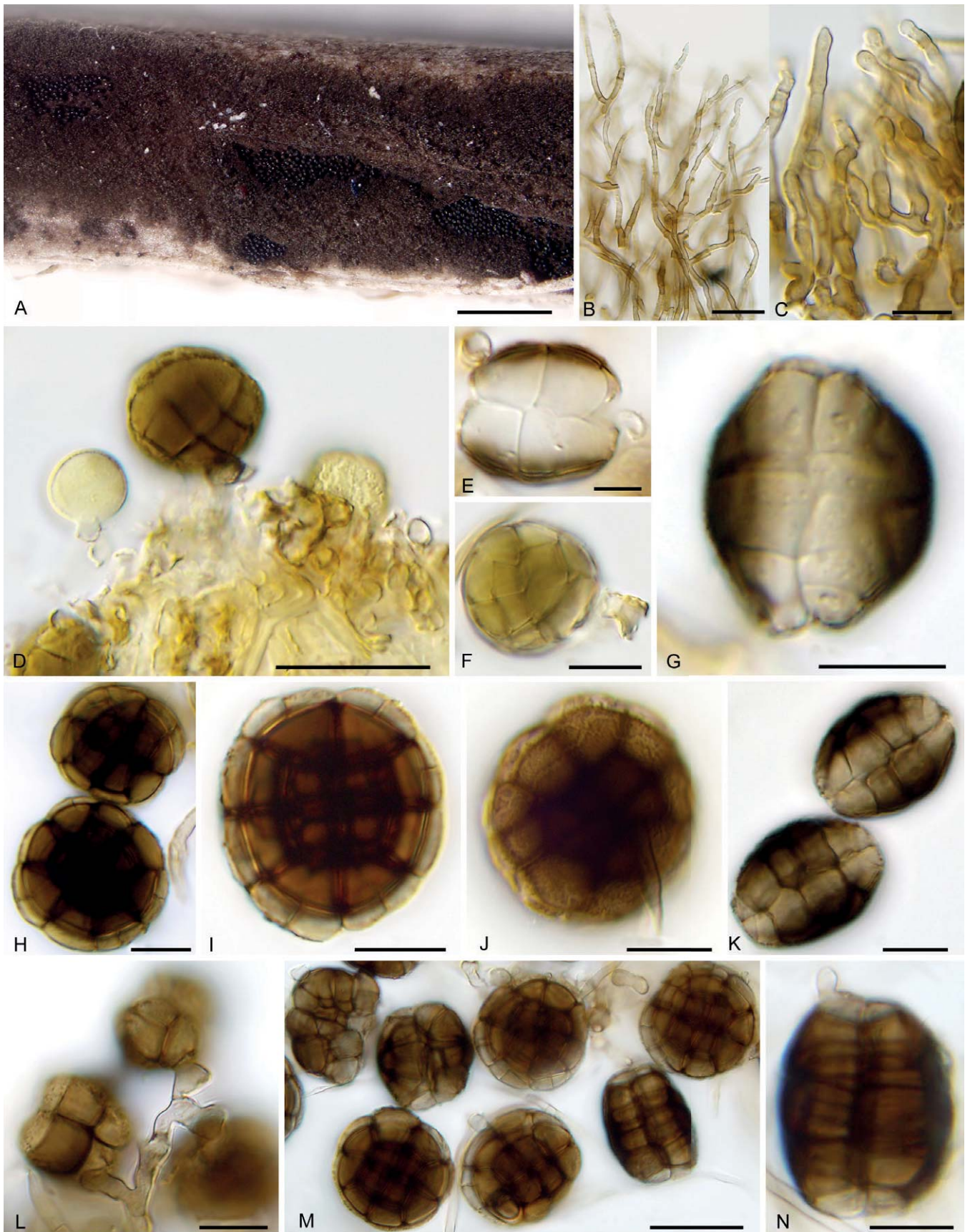


Fig. 8. *Hermatomyces sphaericoides* (PMA 116079 – holotype) **A.** Colonies on the natural substrate. **B–C.** Subicular hyphae. **D.** Conidiogenous cells and young conidia. **E–G.** Young conidia. **H–K.** Mature conidia. **L–N.** Conidia on PDA. Bar A = 500 μ m, B = 20 μ m, C–L = 10 μ m, M = 20 μ m, N = 10 μ m.

significant. Subicular hyphae are mostly smooth or sparingly verrucose, less compact and forming a dark gray subiculum around the fertile centre but combinations of some of these features were similarly found in *H. sphaericus* specimens.

Additional material examined: **Panama:** Chiriquí Province: west of Los Algarrobos, path through pastures along Majagua river, 8°29'47.82"N 82°26'19.721"W, 110 m a.s.l., on dry rotten twig of unknown tree, 14 Jul. 2017, *O. Koukol* KZP411 (PRM 946200; CCF 5907 – living culture); Los Algarrobos, path to Majagua river, 8°29'13.86"N 82°26'2.881"W, 105 m a.s.l., on rotten leaf of *Astrocaryum standleyanum* (Arecaceae), 8 Jul. 2017, *O. Koukol* KZP320 (PRC 4102; CCF 5895– living culture); *ibid.*, on rotten petiole of unknown liana leaf, 8 Jul. 2017, *O. Koukol* KZP326 (PRC 4103; CCF 5896– living culture); **Bocas del Toro Province:** along the road between Almirante and Rambála, 9°10'1.79"N 82°18'57.27"W, 201 m a.s.l., on dry rotten stem of unknown liana, 22 Jul. 2017, *O. Koukol* KZP470 (UCH).

***Hermatomyces sphaericus* (Sacc.) S. Hughes,**
Mycol. Pap. **50:** 100 (1953).

(Figs 9, 10, 14C, F, I, L, 17C)

Basionym: *Stemphylium sphaericum* Sacc., *Atti Accad. Sci. Ven.-Trent.-Istr.* **10:** 86 (1917).

Synonyms: *Hermatomyces chromolaenae* Jin F. Li *et al.*, *Index Fungorum* **342:** 1 (2017).

Hermatomyces saikhuensis Tibpromma *et al.*, *Phytotaxa* **275:** 134 (2016).

Hermatomyces tectonae Doilom *et al.*, *Fungal Div.* **82:** 117 (2016).

Type: **Philippines:** *Laguna:* Los Baños, on decorticated braches of *Barleria cristata* (Acanthaceae). Dec. 1915, C. F. Baker [Fungi Malayana no. 395] (K(M) IMI 37763 – holotype).

Description: Colonies on the natural substrate in the form of sporodochial, subiculate conidiomata, superficial, more or less circular, oval or lobed, scattered or crowded and confluent, brown-black or gray-black, consisting of a velvety, dense, thick, annular, brown or gray, sterile mycelial outer zone enclosing a black, glistening, abundantly sporulating granulose centre, circular, oval or lobed by confluence where conidia are easily liberated when touched, 300–800 µm diam when solitary, up to 1600 µm long when confluent. *Mycelium* superficial, composed of a tightly compact network of repent, branched, septate, smooth or finely verruculose, locally thick-walled, brown hyphae, 2–4 µm wide, subicular hyphae flexuous, undulate, strongly or irregularly geniculate, subhyaline or pale brown to brown, branched, smooth, finely verruculose or locally verrucose, branching and anastomosing to form a dense network. *Conidiophores* micronematous, mononematous, cylindrical or forked once, subhyaline or pale brown, up to 15 long and 2–4 µm wide, often corresponding to conidiogenous cells. *Conidiogenous cells* monoblastic, integrated, terminal, cylindrical, determinate, subhyaline to pale brown, smooth or finely verruculose, often arising directly on the superficial mycelium and closely packed together at the fertile centre, sphaerical, subsphaerical or ampulliform, 4–10 × 3–4 µm. *Conidia* of one type, solitary, dry, lenticular, globose, subglobose, disc-shaped or broadly ellipsoidal in

front view, muriform, smooth or verruculose, central cells brown, dark brown to blackish brown, sometimes all cells brown and muriform septation visible, outer ring of peripheral cells narrow or wide, pale brown to brown, often constricted at septa, broadly ellipsoidal or oblong in side view where two distinct adpressed halves can be recognized, each half seen laterally as a row of 4–7 cells, end cells subhyaline to pale brown, middle cells brown to blackish brown, with a narrow, sometimes deep constriction between them, (21–)24–29(–32.5) × (18–)21–27(–31.5) µm, 16–23.5(–28) µm thick, L/W = 1.08, L/T = 1.22.

Cultures (Fig. 3P–R): Colonies moderately slow growing reaching on MEA 13–17 mm diam, on PCA 12–16 mm, and on PDA 12–16 mm after 7 d at 25 °C. Sporulation on PDA late within 4 m at 25 °C and observed only in one (CCF 5911) of 12 strains. Lenticular conidia (24.5–)26.5–30(–31.5) × 22.5–29 µm and (18.5–)21–25.5 µm thick.

Notes: *Hermatomyces sphaericus* was the first species with one conidium type transferred into the genus (Hughes 1953). Our numerous collections match well with the type collection (K(M)–IMI 37763) and Hughes' description based on his specimens from bark of *Albizia gummifera* (Mimosaceae), *Averrhoa carambola* (Oxalidaceae), *Theobroma cacao* (Sterculiaceae), and rachides of leaves of *Elais guineensis* (Arecaceae) collected in Ghana. He described the lenticular conidia as 26–31 × 25–30 µm and 20–25 µm thick. Other specimens described in the literature are reported as having similar or slightly smaller conidia. Holubová-Jechová & Mercado (1986) reported conidia as 24–28.8 × 24–27 µm and 16.6–21 µm thick for a specimen collected on a dead branch from Cuba (PRM 838101) and revised in this study, while Heredia *et al.* (1997) described conidia as 24–29 × 24–30 µm and 15–21 µm thick for specimens collected on fallen twigs and branches of angiosperms and on a palm petiole in Mexico. Zhang *et al.* (2009) provided conidial dimensions of 23–29 × 22–26 µm for specimens collected on a dead branch of *Rauvolfia vomitoria* (Apocynaceae) and dead wood of *Tectona grandis* (Lamiaceae) in China. Mel'nik (2000) reported conidia 26–31 × 25–30 µm and 25–30 µm thick for a specimen collected on dry thin branches of *Larix sibirica* (Pinaceae) in Russia, which is, however, questionable, because it represents the only record outside the tropics.

Examination and comparison of the specimens from Panama revealed morphological variability in other features, e.g. the subiculum in PRC 4100 was brown and composed of strongly geniculate, brown, smooth or finely verruculose hyphae forming compact masses, while the subiculum in PRC 4105 was gray and composed of subhyaline to pale brown, irregularly geniculate, undulate and loose hyphae with some degree of ornamentation, finely verruculose to locally verruculose. Conidial ornamentation was mainly verruculose throughout Panamanian specimens. Re-examination of PRM 838101 from Cuba also revealed the presence of verruculose conidia. Surprisingly, this feature has been rarely mentioned in descriptions of *H. sphaericus* and wall ornamentation, if smooth or not, has often been overlooked for both conidia and subicular hyphae. The only exceptions were Hughes (1953), who described subicular hyphae as smooth, and Zhang

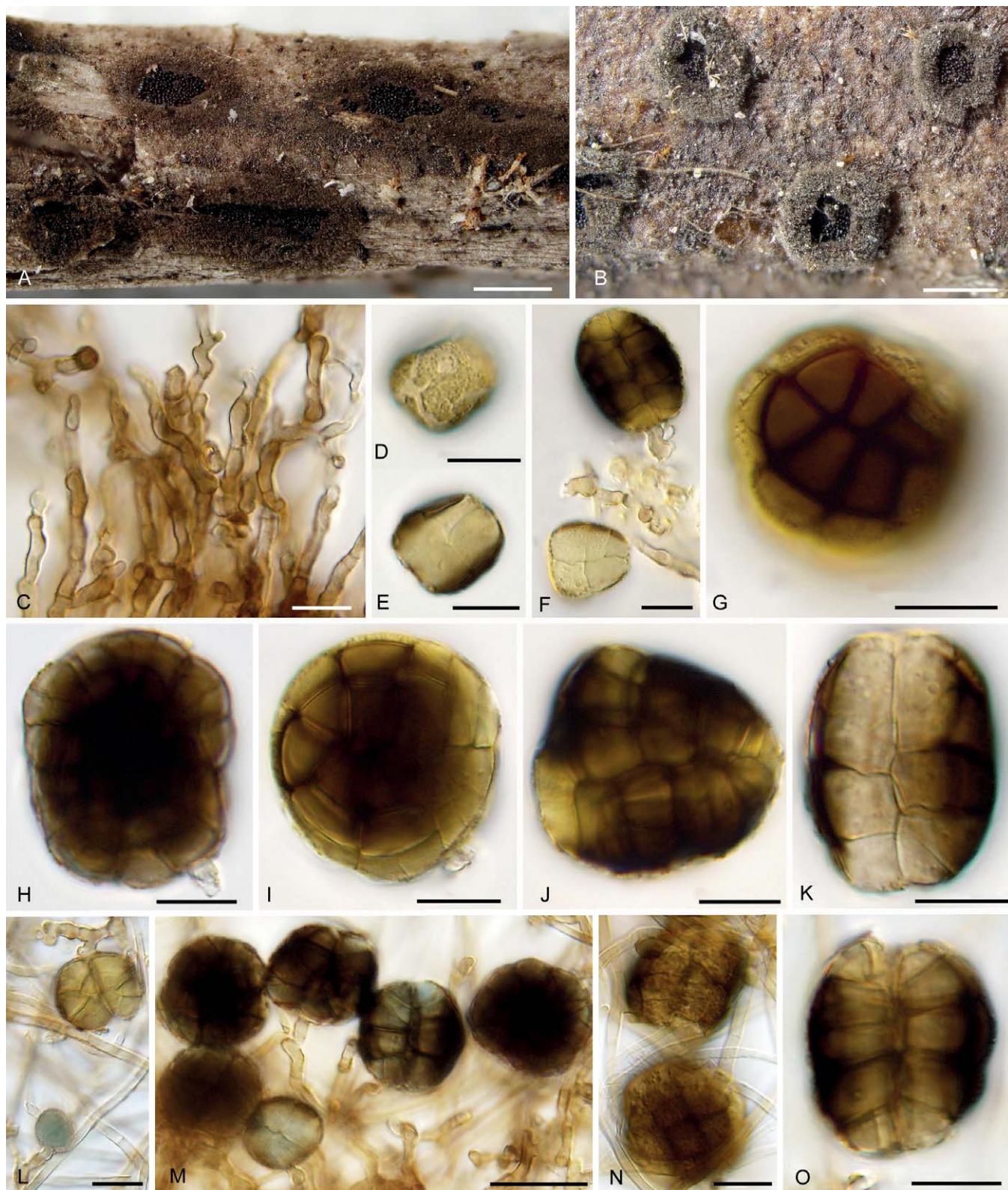


Fig. 9. *Hermatomyces sphaericus* (PMA 116080) **A–B.** Colonies on the natural substrate showing morphological variability. **C.** Subicular hyphae. **D–G.** Young conidia. **H–K.** Mature conidia. **L.** Young conidia on PDA (stained with lacto-cotton blue at L–M). **M–O.** Mature conidia on PDA. Bar A–B = 500 μm , C–L = 10 μm , M = 20 μm , N–O = 10 μm .

et al. (2009) who mentioned smooth conidia. Indeed, the conidia in permanent slides of the holotype (Fig. 10B–D) are either smooth or inconspicuously verruculose. Sporulation in culture media, on the other hand, was rare with only one of 12 isolates able to produce conidia after 4 m of incubation.

In contrast, Zhang *et al.* (2009) reported sporulation of two strains after 6–10 d when grown on PDA at 24–25 $^{\circ}\text{C}$ in the only reference to cultural data available so far for *H. sphaericus*. These examples, based on several collections of different origins, show that *H. sphaericus* is a plurivorous,

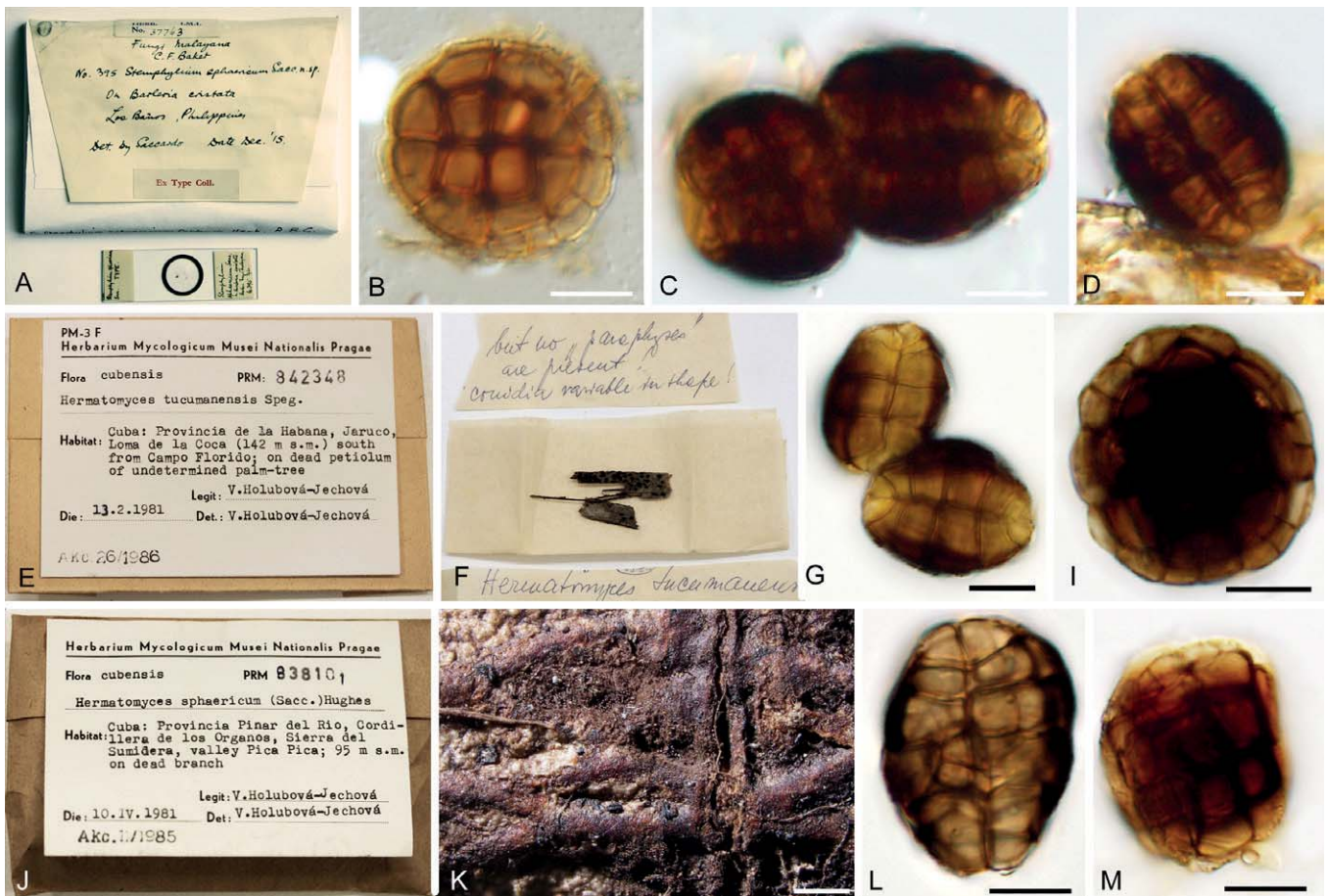


Fig. 10. Revised fungarium collections of *Hermatomyces sphaericus*. **A.** Envelope of the holotype of *Stemphylium sphaericum* (K(M) IMI 37763). **B–D.** Mature conidia. **E.** Envelope of collection PRM 842348. **F.** Content of the envelope including remarks on morphology. **G–I.** Mature conidia. **J.** Envelope of collection PRM 838101. **K.** Colony on the substrate. **L–M.** Mature conidia. Bar B–D = 10 µm, G–I = 10 µm, K = 500 µm, L–M = 10 µm.

morphologically variable species whose morphology may depend either on environmental or cultural conditions, the plant species on which the fungus is growing and possibly also to the age of the colony.

Hermatomyces sphaericus has been further recorded on the dead rachis and petiole of *Archontophoenix alexandrae* from Hong Kong and Singapore (Taylor & Hyde 2003), on dead leaves of *Chamaedorea* sp. (both *Arecaceae*) and plant debris from Mexico (Heredia & Mercado 1998, Becerra *et al.* 2007), on branches and leaf litter of *Shorea* sp. (*Dipterocarpaceae*) in Indonesia (Harahap 2013), on dead branches and wood of *Syzygium jambos* (*Myrtaceae*) and *Pisonia aculeata* (*Nyctaginaceae*), respectively, from Cuba (Delgado *et al.* 2002, Mercado *et al.* 2002) and on submerged twigs and twigs in bird nests from Brazil (Barbosa & Gusmão 2011, Conceição & Marques 2015). It is considered the most widespread species in the genus (Hashimoto *et al.* 2017) with a pantropical distribution. However, in the absence of available voucher specimens or molecular data, the distribution of *H. sphaericus* in all the countries mentioned in the literature cannot be confirmed. In view of the high morphological similarity with *H. sphaericoides* and in the absence of reference molecular data, we consider *H. sphaericus* to be the widespread species while *H. sphaericoides* is currently known only from Panama.

In this context, two recently described species with one conidium type, *H. saikhuensis* and *H. chromolaenae*, represent *H. sphaericus* based on morphological and molecular data and are considered conspecific here. They were described based on single isolates collected on dead leaves of *Pandanus odorifer* (*Pandanaceae*) and a dead stem of *Chromolaena odorata* (*Asteraceae*) (Tibpromma *et al.* 2016, 2017), respectively, in Thailand. The phenotypic differences, mainly smaller lenticular conidia, 14–21.5 × 11–19 µm for *H. saikhuensis* and 9–10.5 × 10–11.5 µm for *H. chromolaenae*, may be attributed to intraspecific variability. The sequences originating from ex-type cultures of these taxa clustered in all our phylogenies with the numerous sequences belonging to our specimens of *H. sphaericus* (Fig. 1). Although Tibpromma *et al.* (2017) observed some segregation in their phylogenies this should be considered artificial and a sequencing error. When available sequences from GenBank were clustered with our dataset, the only variability was found for LSU sequences on their flanking regions in an area where all other sequences are conserved.

Additional material examined: **Panama:** Chiriquí Province: Los Algarrobos, path to Majagua river, 8°29'13.86"N 82°26'2.881"W, 105 m a.s.l., on heavily rotten leaf of *Arecaceae*, 12 Jul. 2016, P. Zehnálek KZP241 (PRC 4100; CCF – living culture); David, UNACHI, Botanical

Garden, along San Cristobal river, 8°26'3.49"N 82°27'8.802"W, 45 m a.s.l., on dry rotten stem of unknown liana, 11 Jul. 2017, *L. Janošik KZP375* (PRC 4104; CCF 5902– living culture); *ibid.*, on dry rotten stem of unknown liana, 11 Jul. 2017, *L. Janošik KZP376* (PRC 4106; CCF 5902– living culture); *ibid.*, on dry rotten hanging twig of *Guazuma ulmifolia* (Malvaceae), 19 Jul. 2017, *O. Koukol KZP441* (UCH); west of Los Algarrobos, path through pastures along Majagua river, 8°29'47.82"N 82°26'19.721"W, 110 m a.s.l., on wet rotten stem of unknown liana, 14 Jul. 2017, *O. Koukol KZP410* (PMA 116085; CCF 5906– living culture); *ibid.*, on dry rotten twig of unknown tree, 14 Jul. 2017, *O. Koukol KZP415* (PMA 116080; CCF 5911– living culture); Boquete, Lago La Estrella, 8°43'44.09"N 82°23'2.465"W, 977 m a.s.l., on dry rotten hanging twig of unknown tree, 19 Jul. 2017, *O. Koukol KZP445* (PMA 116081; CCF 5914– living culture); *Bocas del Toro Province*: Changuinola, dirty road close to the old railway bridge, 9°24'21.85"N 82°31'12.24"W, 18 m a.s.l., dry rotten hanging twig of unknown *Fabaceae*, 20 Jul. 2017, *O. Koukol KZP455* (PRC 4116); along the road between Almirante and Changuinola, 9°21'57.54"N 82°28'33.29"W, 135 m a.s.l., on dry rotten hanging twig of unknown tree, 21 Jul. 2017, *O. Koukol KZP457* (PRC 4108; CCF 5916– living culture); *ibid.*, on dry rotten hanging unknown liana, 21 Jul. 2017, *O. Koukol KZP458* (PRM 946201); along the road between Almirante and Changuinola, 9°20'46.66"N 82°28'23.24"W, 128 m a.s.l., on dry rotten hanging twig of unknown tree, 21 Jul. 2017, *O. Koukol KZP459* (PMA 116082; CCF 5917– living culture); *ibid.*, on dry rotten hanging twig of unknown tree, 21 Jul. 2017, *O. Koukol KZP460* (PRC 4105); along the road between Almirante and Changuinola, 9°18'51.75"N 82°27'0.47"W, 52 m a.s.l., on dry rotten hanging twig of unknown tree, 21 Jul. 2017, *O. Koukol KZP462* (UCH); along the road between Almirante and Rambála, 9°12'9.65"N 82°20'48.80"W, 36 m a.s.l., dry rotten hanging twig of unknown tree, 22 Jul. 2017, *O. Koukol KZP469* (PRC 4117). – **Cuba**: *La Habana Province*: Jaruco, Loma de la Coca, south of Campo Florido, on dead petiole of an undetermined palm tree (*Arecaceae*), 13 Feb. 1981, *V. Holubová-Jechová* (PRM 842348; as *H. tucumanensis*); Pinar del Rio, Sierra de Sumidero, Pica Pica valley, on dead branch, 10 Apr. 1981, *V. Holubová-Jechová* (PRM 838101).

Heratomyces tucumanensis Speg., *Anal. Mus. nac. B. Aires, ser. 3 13*: 446 (1911). (Figs 11, 15A, C, E, G, 16K)

Description: Colonies on the natural substrate in the form of sporodochial, subciliate conidiomata, superficial, more or less circular, oval or lobed, scattered or crowded and confluent, gray-black, consisting of a velvety, dense, thick, annular, gray, sterile mycelial outer zone enclosing a black or whitish black, glistening, abundantly sporulating granulose centre, circular, oval or lobed by confluence where cylindrical conidia are seen among the lenticular ones and are easily liberated when touched, 250–500 µm diam when solitary, up to 900 µm long when confluent. *Mycelium* superficial, composed of a loose or compact network of repent, branched, septate, anastomosing, smooth or finely verruculose, locally verruculose or verrucose, thin or thick walled, pale brown to brown hyphae, 2–4 µm wide; subicular hyphae ascending, branched, septate, verruculose or verrucose, pale brown to brown, erect, flexuous, undulate or irregularly geniculate, branching and rarely anastomosing to form a moderately dense network. *Conidiophores* micronematous,

mononematous, cylindrical, hyaline to pale brown, smooth, up to 12 × 3–4 µm, often corresponding to conidiogenous cells. *Conidiogenous cells* monoblastic, integrated, terminal, determinate, often arising directly on the superficial mycelium and closely packed together at the fertile centre, subsphaerical, ovoid or ampulliform, pale brown to brown, smooth, 4–8 × 3–5 µm. *Conidia* of two types, solitary, dry; lenticular conidia muriform, smooth, ellipsoidal in front view, central cells mostly black or dark brown to blackish brown, peripheral cells hyaline to subhyaline, forming a distinct but often incomplete ring up to 4 µm wide, slightly constricted at the septa or not, narrowly oblong in side view with the two halves not readily recognizable, each half seen laterally as a row of 6–7 cells, end cells hyaline to subhyaline, middle cells dark brown to blackish brown, (22–)27–35 × 18–25 µm, 12–17 µm thick, L/W = 1.38; cylindrical conidia straight or slightly flexuous, septate, smooth, subcylindrical or obclavate, consisting of two columns of 3–6 cells each arising from one or two basal cells, each column with 3–5 transverse septa and sometimes with 0–1 oblique septa delimiting smaller cells toward the apex, hyaline, with a distinct dark brown pigmentation running from the top downwards and narrowing to a point close to the basal cell(s), apex rounded and widened, (21–)23–26(–28.5) × 7–14 µm. *Sexual morph* unknown.

Cultures (Fig. 3S–U): Colonies moderately slow growing reaching on MEA 12–13 mm diam, on PCA 14–16 mm, and on PDA 14–16 mm after 7 d at 25 °C. No sporulation observed after 4 m at 25 °C.

Notes: Spegazzini (1911) described *H. tucumanensis*, the generic type, from a rotten branch of *Smilax campestris* (*Smilacaceae*) and *Celtis* sp. (*Cannabaceae*) in Argentina. It is evident from his fig. 65 that he considered the cylindrical conidia to be conidiophores (“sporophores”), bearing two melanized beaks with hanging lenticular conidia. This misinterpretation might have been caused by the limited quality of the optical equipment available at the time but also both types of conidia may give that impression when seen appressed together. Our three specimens match well the protologue of *H. tucumanensis* in the overall shape of conidia, but our measurements are smaller compared to those of Spegazzini (1911). He recorded lenticular conidia 35–40 × 30 µm and 15–20 µm thick and “sporophores” (cylindrical conidia) 20–40 µm long with a similar thickness of 10–15 µm. Leão *et al.* (2013) examined what they considered to be the holotype of *H. tucumanensis* (LPS15823) and also described larger conidia, the lenticular conidia being 31–42 × 14–16 µm and the cylindrical ones with two columns of 2–3 cells each and 31–46 × 17–28 µm. In view of similar differences between specimens of other taxa such as *H. reticulatus*, we suggest to consider them as the result of intraspecific variability.

Numerous collectors after Spegazzini subsequently recorded “*H. tucumanensis*” but descriptions in the literature and our study of available specimens suggest that the name became rather an “umbrella” species and was largely attributed to numerous morphologically different two conidium type and one conidium type species recorded in various countries and on diverse hosts. Hughes (1953) mentioned collections

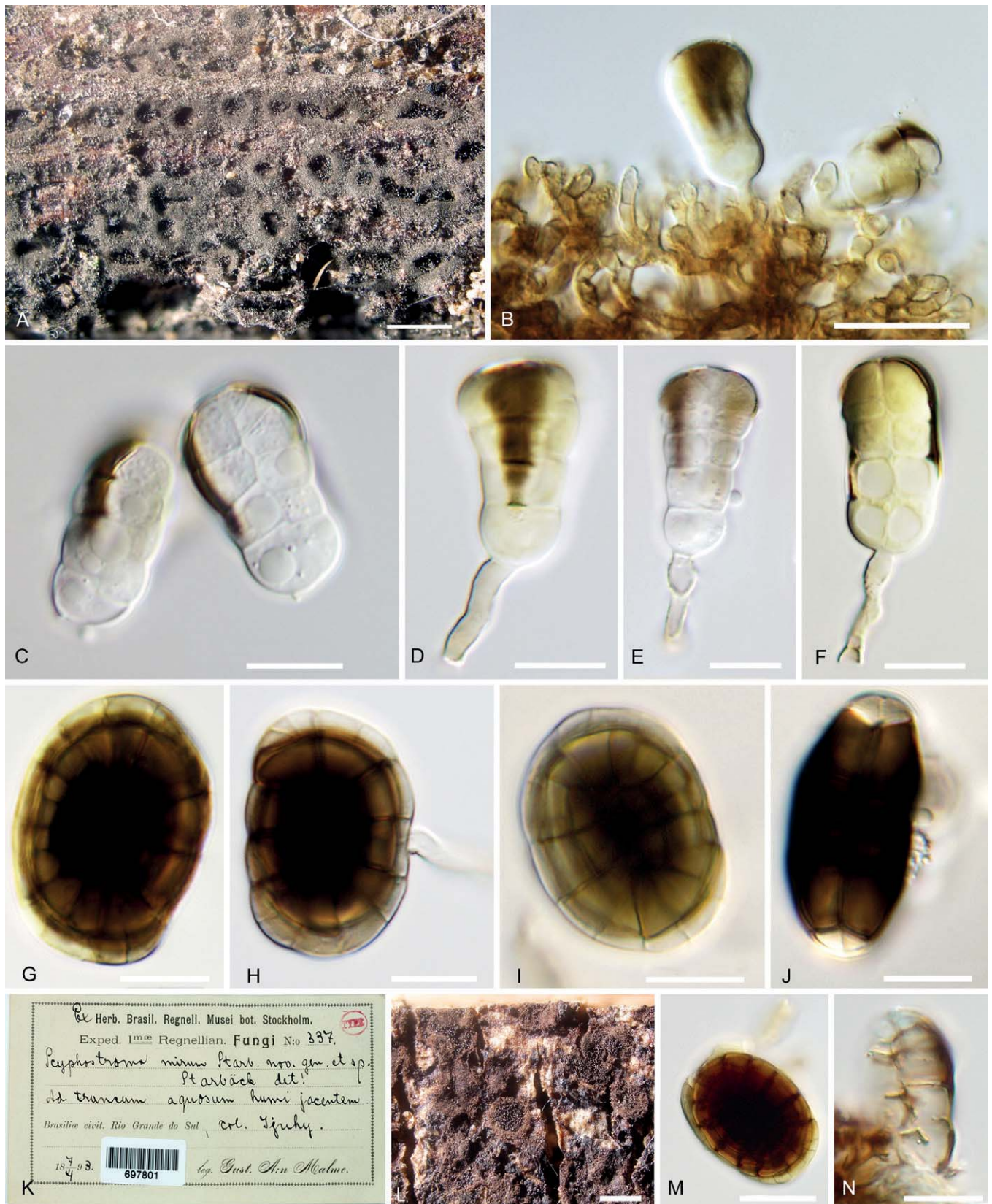


Fig. 11. *Hermatomyces tucumanensis* (PMA 116083) **A.** Colonies on the natural substrate. **B.** Conidiogenous cells, young conidia and subicular hyphae. **C.** Young cylindrical conidia. **D–F.** Cylindrical conidia with still attached conidiogenous cell and conidiophore. **G–J.** Lenticular conidia. **K.** Envelope and content of the holotype of *Scyphostroma mirum* (BPI 697801). **L.** Colonies on the natural substrate. **M.** Lenticular conidium. **N.** Fragment of cylindrical conidium. Bar A = 500 μ m, B–C = 20 μ m, D–J = 10 μ m, L = 500 μ m, M–N = 10 μ m.

of "*H. tucumanensis*" from dead branches of *Averrhoa carambola*, *Alchornea cordifolia* (Euphorbiaceae), *Coffea liberica* (Rubiaceae), and *Elaeidis guineensis* (Arecaceae) from Ghana and Sierra Leone. His species concept, based on examination of the type material from Argentina along with material in K(M)–IMI, was much broader than that of Spegazzini's. Hughes (1953) depicted one specimen with 2–3-celled cylindrical conidia in one column and another morphologically different specimen with six-celled cylindrical conidia in two columns, both with apical pigmentation. In our opinion the specimens studied and illustrated by Hughes (fig. 43) belong to at least two different species, but not to *H. tucumanensis*. Further records are also questionable in the absence of morphological details. Mercado (1984) examined a specimen on the dead trunk of an unidentified tree in Cuba and described only lenticular conidia, but the picture also shows cylindrical conidia with 2–5 darker apical cells resembling *H. amphisporus*. Similarly, another collection from Cuba and revised in our study (PRM 842348) turned out to belong to *H. sphaericus* (Fig. 10). Matsushima (1993) reported "*H. tucumanensis*" from decaying petioles of a palm tree and a twig of a broad-leaved tree in Peru with 4–6-celled cylindrical conidia composed of globose, hyaline cells. His specimen is obviously not conspecific with *H. tucumanensis* and he most probably referred to a distinct, yet undescribed species of *Heratomyces*. Delgado (2013) reported a specimen on rachides of dead leaves of *Acoelorrhaphe wrightii* (Arecaceae) in Florida without depicting cylindrical conidia. Unpublished morphological data along with unedited pictures were revised within the scope of this study and the Florida specimen seems to represent *H. amphisporus*. Prasher & Singh (2015) recorded a collection under the name "*H. tucumanensis*" from a branch in litter and bark of *Mangifera indica* (Anacardiaceae) in India. They mentioned "elliptical to almost round", smooth lenticular conidia 30–40 × 20–28 µm long and 13.5–15 µm thick. Cylindrical conidia were not described and the lenticular conidia in Fig. 1C match well those of *H. reticulatus*, particularly by the presence of a distinct constriction between halves, comparable dimensions and apparently verruculose wall ornamentation. Chang (1995) recorded a specimen on unknown decaying twigs from a stream in Taiwan having cylindrical conidia with two columns of 3–4 cells each and darkly pigmented apical cells which based on pigmentation and conidial shape does not seem to be conspecific with *H. tucumanensis* either. Finally, Castañeda & Heredia (2000) and Prasher & Sushma (2014) considered *H. tucumanensis* monomorphic following Ellis (1971) who described cylindrical conidia as 'setae'. Therefore, the currently known distribution of *H. tucumanensis* must be considered with caution and based on our revision is limited to the Neotropics.

We were unable as a part of this study to re-examine the type material of this species in LPS, which comprises two packets, both of them from one of the two original hosts. One of these collections appears to require selection as a lectotype, for which a sequenced epitype could then be designated. However, we prefer to leave this pending for a future note as we consider it unwise to make a choice without a critical examination of the Spegazzini material.

Material examined: **Panama:** Chiriquí Province: David, UNACHI, Botanical Garden, along San Cristobal river, 8°26'3.49"N 82°27'8.802"W, 45 m a.s.l., on dry rotten twig of unknown tree, 19 Jul. 2017, *O. Koukol* KZP443 (UCH; CCF 5912– living culture); *ibid.* on dry rotten hanging twig of *Guazuma ulmifolia*, 19 Jul. 2017, *O. Koukol* KZP444 (PMA 116083; CCF 5913– living culture); *ibid.*, on dry rotten hanging twig of unknown tree, 19 Jul. 2017, *O. Koukol* KZP453 (PRM 946202; CCF 5915– living culture).

***Heratomyces verrucosus* Koukol & G. Delgado, sp. nov.**

Mycobank MB824249

(Figs 12, 15B, D, F, H, 17D)

Etymology: *verrucosus*, referring to the verrucose surface of the lenticular conidia.

Diagnosis: Differs from other species of *Heratomyces* with one conidium type in having distinctly verrucose lenticular conidia and subicular hyphae.

Type: **Panama:** Chiriquí Province: David, UNACHI, Botanical Garden, along San Cristobal river, 8°26'3.49"N, 82°27'8.802"W, 45 m a.s.l., on dry rotten stem of unknown liana, 11 Jul. 2017, *L. Janošik* KZP377 (PMA 116084 – holotype; CCF 5903 – ex-type living culture).

Description: Colonies on the natural substrate forming sporodochial, subiculate conidiomata, superficial, more or less circular or oval, scattered or crowded and confluent, brown-black, consisting of a velvety, annular, compact, dark brown, sterile mycelial outer zone enclosing a black, glistening sporulating centre, circular, oval or lobed by confluence, where conidia are easily liberated when touched, 250–700 µm diam when solitary, up to 1500 µm long when confluent. *Mycelium* superficial composed of compact network of repent, branched, septate, smooth or verruculose, pale brown to brown hyphae, 2–4 µm wide; subicular hyphae septate, branched, flexuous, undulate or irregularly geniculate once or few times, pale brown to brown, finely verruculose or finely spinulose to verruculose or locally verrucose, branching and anastomosing to form a dense network. *Conidiophores* micronematous, mononematous, cylindrical or slightly subulate, subhyaline to pale brown, smooth or finely verruculose, 6–10 × 2–4 µm, often corresponding to conidiogenous cells. *Conidiogenous cells* monoblastic, integrated, terminal, determinate, often arising directly on the superficial mycelium and closely packed together at the fertile centre, sphaerical, subsphaerical or ampulliform, pale brown to brown, smooth or finely verruculose, 4–8 × 2–5 µm. *Conidia* of one type, lenticular, globose, subglobose or disc-shaped in front view, sometimes somewhat irregular, solitary, dry, muriform, constricted at the septa or not, verrucose, central cells brown to dark brown or blackish brown to black, peripheral cells pale brown to brown, wide but sometimes narrow, broadly ellipsoidal to oblong in side view where two distinct adpressed halves can be recognized, each half seen laterally as a row of 4–7 cells, end cells subhyaline to pale brown, middle cells brown to blackish brown, 23–30(–39) × 21–29.5 µm, 14–22 µm thick, L/W = 1.12. *Sexual morph* unknown.

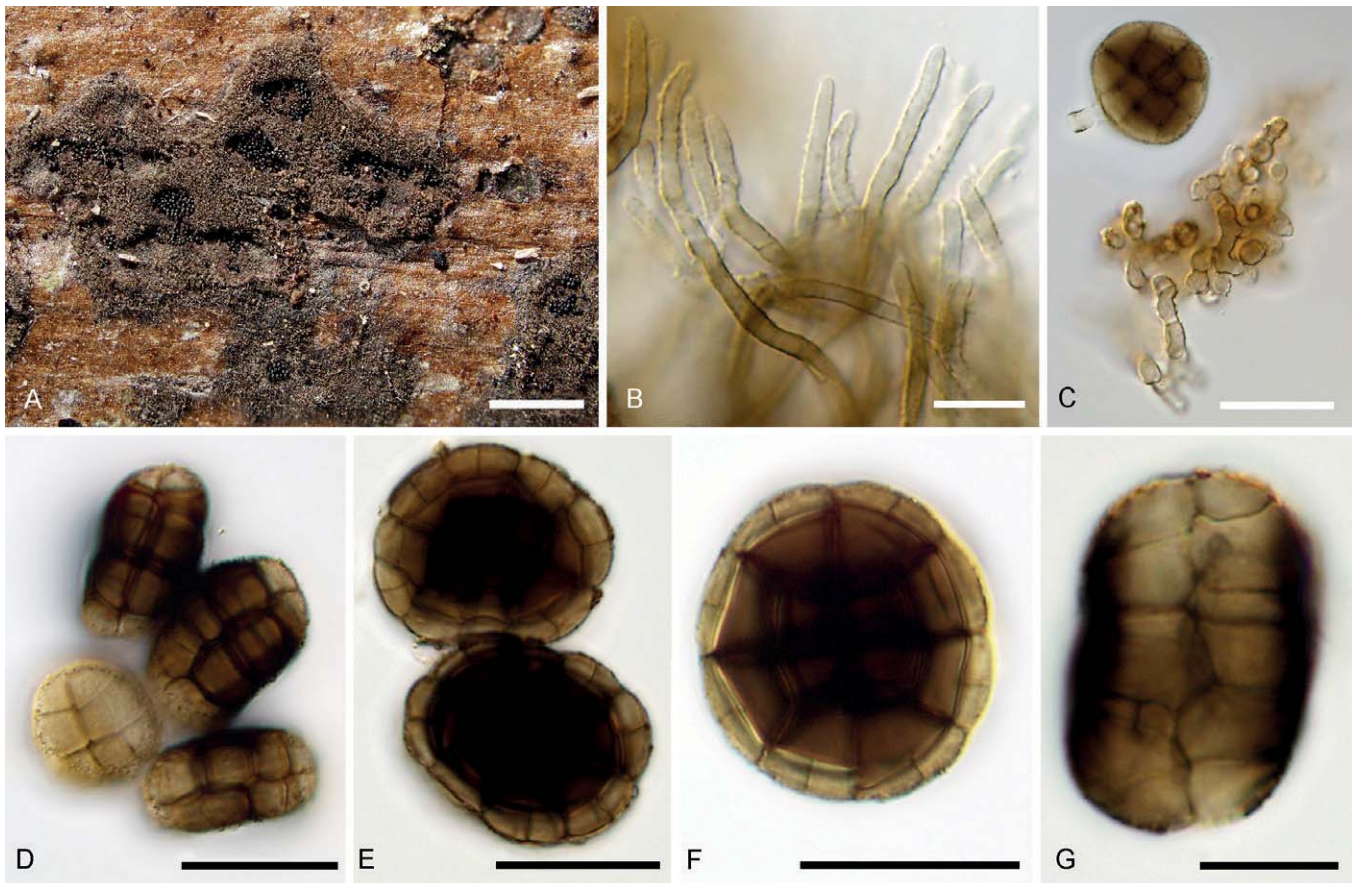


Fig. 12. *Hermatomyces verrucosus* (PMA 116084 – holotype) **A.** Colonies on the natural substrate. **B.** Subicular hyphae. **C.** Basal hyphae with young conidium. **D–G.** Mature conidia. Bar A = 500 μ m, B–E = 10 μ m, F = 20 μ m, G = 10 μ m.

Cultures (Fig. 3V–X): Colonies moderately slow growing reaching on MEA 12–13 mm diam, on PCA 12 mm, and on PDA 13–15 mm after 7 d at 25 °C. No sporulation observed after 4 m at 25 °C.

Notes: *Hermatomyces verrucosus* is morphologically close to *H. sphaericus* and *H. sphaericoides*, both with similarly shaped conidia and ornamented walls. Its conidia, however, are distinctly verrucose and wall ornamentation is more conspicuous on the wider ring of paler peripheral cells when seen in front view. Subicular hyphae are distinctly verruculose including sometimes a finely spinulose or locally verrucose ornamentation and less geniculate, more undulate or flexuous in appearance. Moreover, *H. verrucosus* formed a separate clade with high support in all phylogenies distant from these other two monomorphic taxa (Fig. 1) despite the morphological similarities between them.

Additional material examined: **Panama:** Chiriquí Province: Boquete, Bajo Mono, pipe line trail, 8°49'40.22"N 82°29'26.11"W, 1720 m a.s.l., on dry rotten twig of unknown tree, 9 Jul. 2017, O. Koukol KZP506 (PRC 4101); David, UNACHI, Botanical Garden, along San Cristobal river, 8°26'3.49"N 82°27'8.802"W, 45 m a.s.l., on twigs in the litter of unknown tree, 6 Jul. 2016, O. Koukol KZP171 (PRM 946203; CCF 5892 – living culture).

Overview of other *Hermatomyces* species

Hermatomyces amphisporus R.F. Castañeda & Heredia, *Cryptog. Mycol.* **21**: 223 (2000). (Fig. 16A)

Notes: Castañeda & Heredia (2000) described this species with two conidium types on a decaying branch of *Cyathea* sp. and on setae of an undetermined fungus from Mexico. The cylindrical conidia are distinct in being turbinate to pyriform, with four short columns of 6–11 cells usually arising from a single basal cell and widening to a bulbous, leprous and gray-brown apex. *Hermatomyces pandanicola* (Tibpromma et al. 2016), has morphologically similar cylindrical conidia with turbinate, dark brown apical cells and short columns arising from a common basal cell but conidia of both types are smaller than those in *H. amphisporus*. DNA sequence data of *H. amphisporus* are still unavailable, but it is accepted here based on the distinct morphology and unusual habitat. This fungus is also reported from decaying branches in a further locality in Mexico (Martínez et al. 2014) and from Vietnam (Mel'nik et al. 2013). This species might have a wider distribution range if other closely resembling specimens in the literature identified as *H. tucumanensis* are considered (Mercado 1984, Delgado 2013).

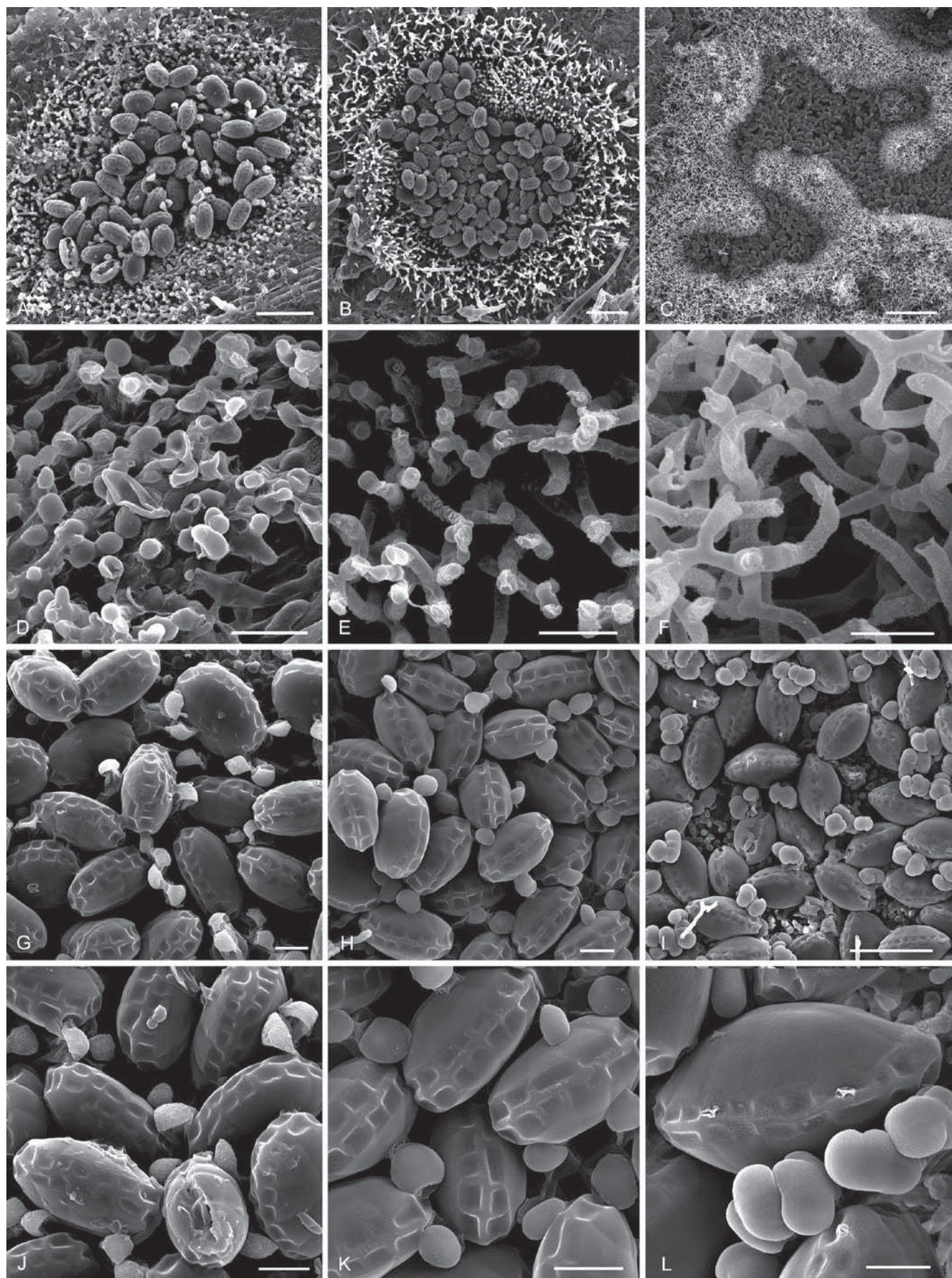


Fig. 13. *Hermatomyces* species as seen by scanning electron microscope. **A, D, G, J.** *H. bifurcatus* (PRM 946196). **B, E, H, K.** *H. constrictus* (PRC 4107). **C, F, I, L.** *H. megasporus* (PMA 116077 – holotype). Colony on the substrate, subicular hyphae, conidia, detail of conidia (from top to bottom). Bar A–B = 50 μ m, C = 200 μ m, D–L = 10 μ m.

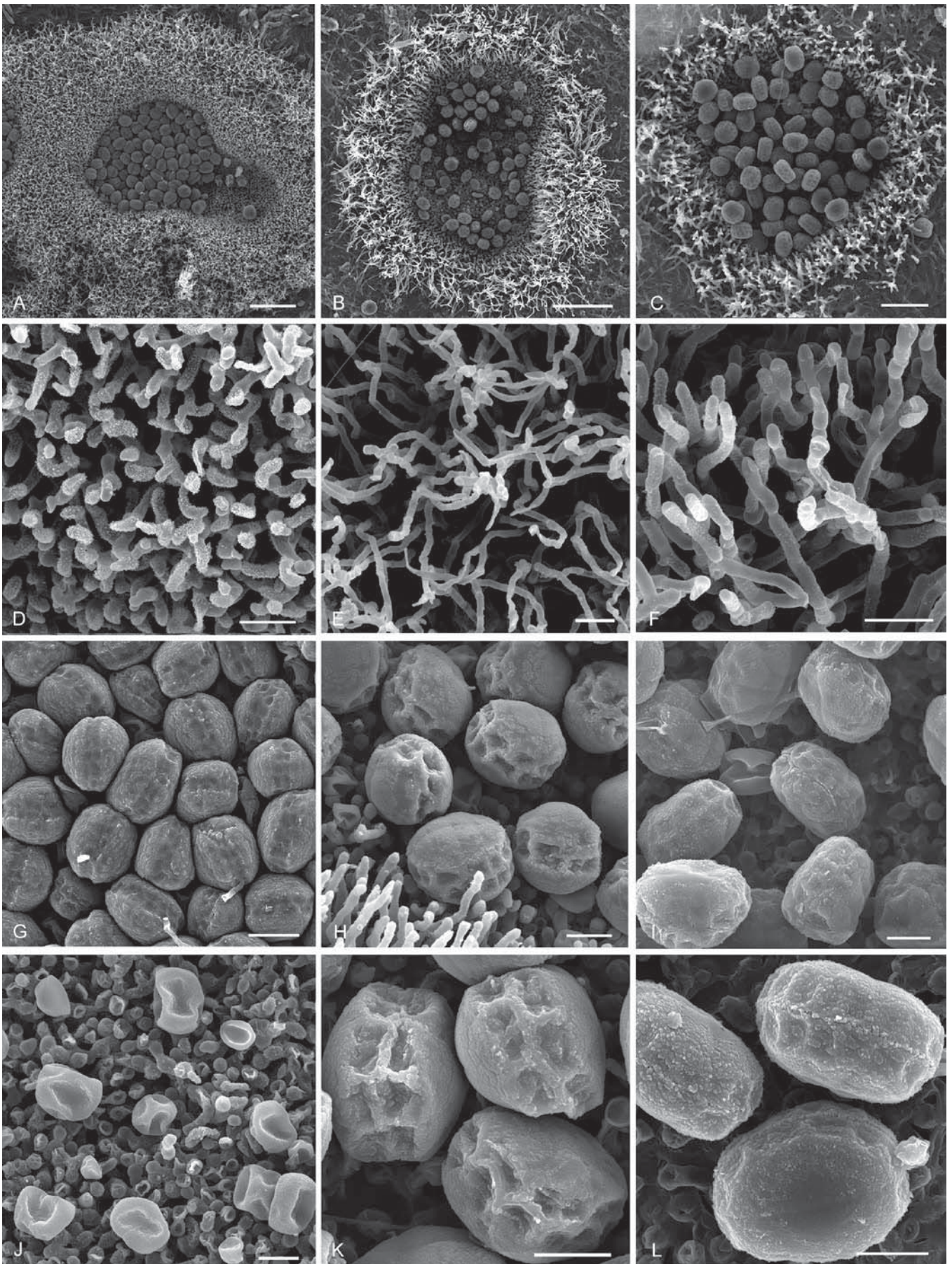


Fig. 14. *Hermatomyces* species as seen by scanning electron microscope. **A, D, G, J.** *H. reticulatus* (PMA 116078). **B, E, H, K.** *H. sphaericoides* (PMA 116079 – holotype). **C, F, I, L.** *H. sphaericus* (PRC 4106) (from left to right). Colony on the substrate, subicular hyphae, conidia, detail of conidia (from top to bottom). Bar A–B = 50 μ m, C = 200 μ m, D–L = 10 μ m.

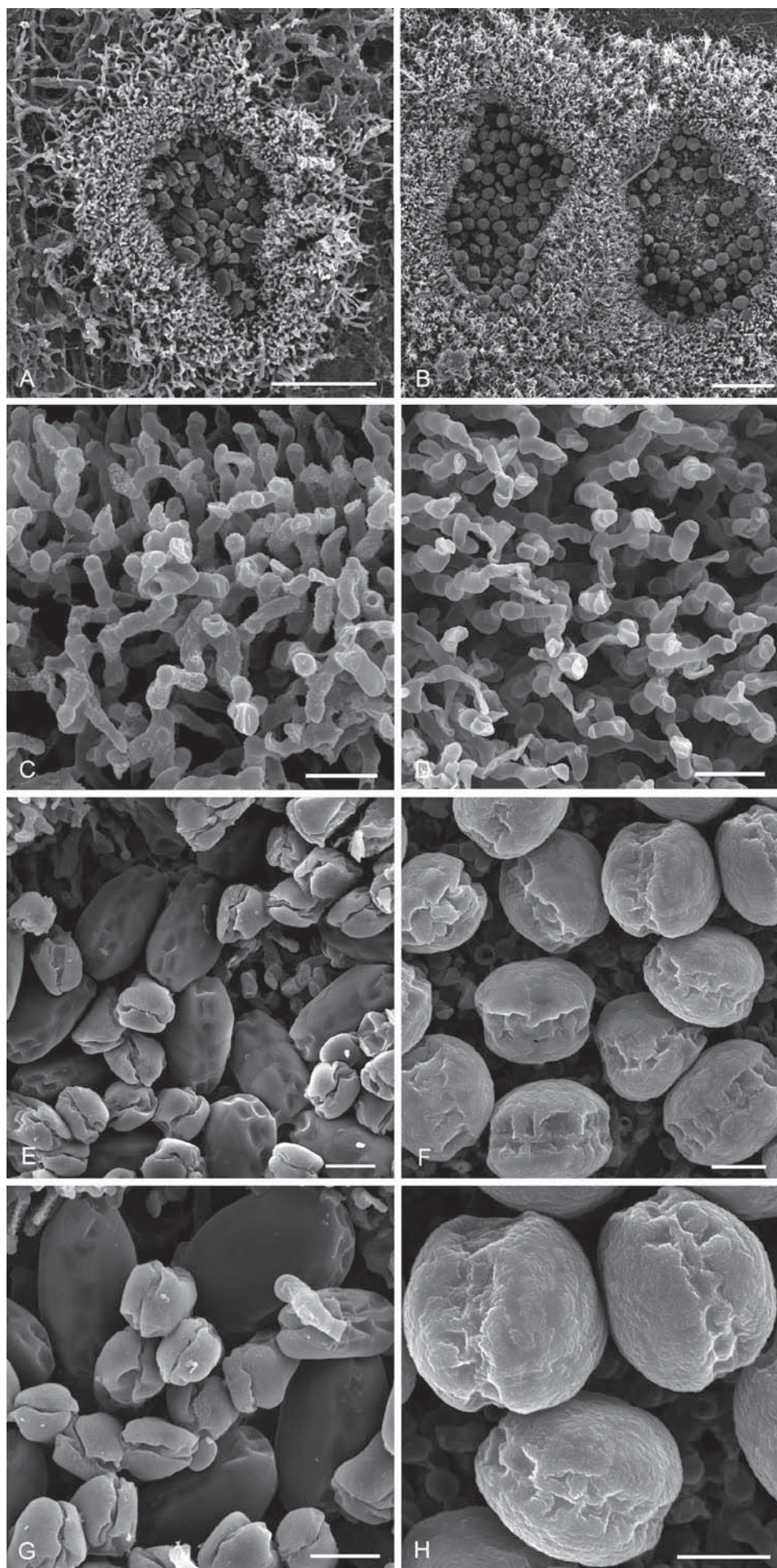


Fig. 15. *Hermatomyces* species as seen by scanning electron microscope. **A, C, E, G.** *H. tucumanensis* (PMA 116083). **B, D, F, H.** *H. verrucosus* (PRM 946203) (from left to right). Colony on the substrate, subcicular hyphae, conidia, detail of conidia (from top to bottom). Bar A–B = 50 μ m, C = 200 μ m, D–L = 10 μ m.

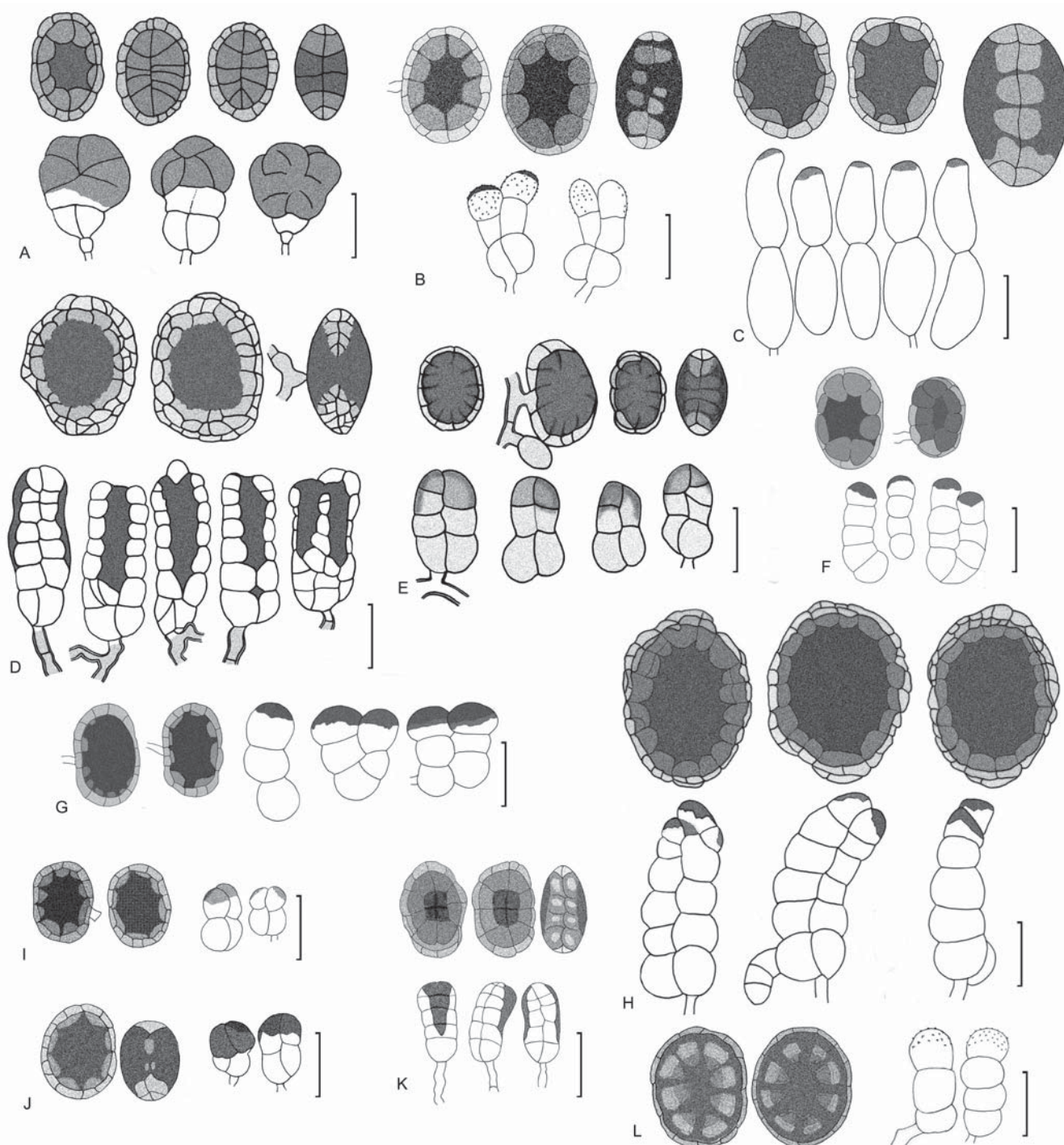


Fig. 16. Species of *Hermatomyces* with two conidium types, visual guide. **A.** *H. amphisporus*. **B.** *H. bifurcatus*. **C.** *H. constrictus*. **D.** *H. dimorphus*. **E.** *H. indicus*. **F.** *H. iriomotensis*. **G.** *H. krabiensis*. **H.** *H. megasporus*. **I.** *H. nabanheensis*. **J.** *H. pandanicola*. **K.** *H. tucumanensis*. **L.** *H. uniseriatus*. Bar = 20 μm .

Hermatomyces dimorphus V. Rao & de Hoog, *Stud. Mycol.* **28**: 35 (1986).
(Fig. 16D)

Notes: Rao & de Hoog (1986) described this species with two conidium types from unidentified twigs in Karnataka, India, and so far it is known only from the type locality. The fungus is unique in having the most complex cylindrical conidia

among known *Hermatomyces* species, which were termed 'paraphyses' in the protologue. These conidia are composed of four vertical rows of seven cells each with septa in different orientations and a peculiar pigmentation pattern along a central or two columns and extending beyond the middle of the conidia. Although molecular data are not available for *H. dimorphus*, it is accepted here based on the conspicuous morphological features.

Hermatomyces indicus Prasher & Sushma, *Nova Hedwigia* **94**: 552 (2014)

Synonym: Hermatomyces thailandicus Doilom *et al.*, *Fungal Div.* **82**: 121 (2016); as “*thailandica*”. (Fig. 16E)

Notes: Prasher & Sushma (2014) provided a detailed description of *H. indicus*, which has both conidium types, based on a specimen collected on a dead petiole of *Phoenix rupicola* (Arecaceae) in India and referred to the cylindrical type as ‘turbinate’ conidia. Doilom *et al.* (2016) ignored the morphologically close *H. indicus* when introducing *H. thailandicus*, probably due to the absence of molecular data available for this species. They differentiated *H. thailandicus* from another taxon, *H. tectonae*, based on polymorphic nucleotide comparisons, size of conidiophores, and both types of conidia, together with colony features. However, the dimensions, shape and apical pigmentation of the cylindrical conidia, as well as the dimensions of the lenticular conidia of *H. thailandicus*, completely overlap with those of *H. indicus*. Moreover, the only apparent difference inferred from Table 4 in Doilom *et al.* (2016) is the number of cells in the cylindrical conidia, probably arising from a misunderstanding of the description in Prasher & Sushma (2014) where the total number of cells is given. Therefore, *H. thailandicus* is considered conspecific with *H. indicus* and reduced to synonymy.

Hermatomyces iriomotensis A. Hashim. & Kaz. Tanaka, *Persoonia* **39**: 58 (2017). (Fig. 16F)

Notes: Hashimoto *et al.* (2017) described *H. iriomotensis*, with two conidium types, based on a combination of phenotypic and molecular data from dead twigs of a woody plant in Japan. The lenticular conidia with an inconspicuous ring composed of minute peripheral cells and 4–8-celled cylindrical conidia with cells arranged in 1–2 columns represent a unique set of morphological features. Molecular data show a close relationship with another species with both conidium types, *H. krabiensis* (Figs 1–2) but their separation is justified on the basis of the different morphology of their cylindrical conidia.

Hermatomyces krabiensis Tibpromma *et al.*, *Phytotaxa* **275**: 132 (2016). (Fig. 16G)

Synonym: Hermatomyces chiangmaiensis J.F. Li *et al.*, *Index Fungorum* **342**: 45 (2017).

Notes: The only available sequence of *H. chiangmaiensis* (LSU rDNA, GenBank KY559394) showed 100 % similarity with that of *H. krabiensis* when an evidently artificial flanking region was trimmed (see also note to *H. chromolaenae*). The two taxa also share an identical habitat, on dead leaves of *Pandanus* sp. in Thailand, and have similar cylindrical conidia with two columns of 2–3 rectangular to globose cells constricted at the septa and arising from a common basal cell. fig. 29e of the protologue of *H. chiangmaiensis* (Tibpromma *et al.* 2017) shows a cylindrical conidium with turbinate, darkened apical cells identical to those of *H. krabiensis*

(Tibpromma *et al.* 2016). Because no other sequence was available for comparison the differences observed in phenotypic characteristics, such as the smaller lenticular conidia and cylindrical conidia having up to 3–4 columns of cells in the latter, must be considered intraspecific variability. Therefore, *H. chiangmaiensis* is reduced here to synonymy based on morphological and molecular evidence.

Hermatomyces mirum (Starbäck) C.G. Lin *et al.*, *Fungal Div.* **80**: 69 (2016).

Basionym: Scyphostroma mirum Starbäck, *Bih. K. svenska VetenskAkad. Handl.*, Afd. 3 **25**: 24 (1899).

Type: Brazil: Rio Grande do Sul: on dead trunk, 4 Jul. 1893, G. O. A. Malme (BPI 697801 – holotype).

Notes: Examination of the holotype of *Scyphostroma mirum* showed this to be conspecific with *H. tucumanensis* (Fig. 11K–N). Lenticular conidia were well preserved and had the same morphology as those of *H. tucumanensis* with measurements close to Spegazzini’s at 32–42 × 27.5–32 µm. The cylindrical conidia were mostly collapsed or broken, but the characteristic two parallel columns of cells and apical melanization were still evident (Fig. 11 N). According to Hyde *et al.* (2016), the monotypic genus *Scyphostroma* was “wrongly described in the literature and has never been referred to any taxonomic discourses of the genus complex”, which is however not a reason for omitting this name as the earliest validly published name for *Heratomyces*. Therefore, the widely used generic name *Heratomyces* should be conserved or protected against the older *Scyphostroma* and the binomial *H. tucumanensis* should be conserved or protected against *S. mirum*.

Hermatomyces nabanheensis Tibpromma *et al.*, *Fungal Div.* **87**: 39 (2017).

(Fig. 16I)

Notes: *Heratomyces nabanheensis* was collected on dead leaves of *Pandanus* sp. in China (Hyde *et al.* 2017). Overall, it shows some phenotypic similarity with *H. pandanicola*, which has both conidium types, but is phylogenetically distinct. When sequences of *H. nabanheensis* were included in our dataset, they showed a different placement each time (Fig. 1) and this was most evident in the species tree (Fig. 2). Based on morphological and molecular evidence this is accepted as a distinct species.

Hermatomyces pandanicola Tibpromma *et al.*, *Phytotaxa* **275**: 134 (2016).

(Fig. 16J)

Notes: Sequences of *H. pandanicola* did not show a stable phylogenetic placement in our analyses. Based on both nuclear ribosomal DNA regions and the RPB2 gene, the species was placed inside the *H. sphaericus* clade but together they formed a clade separate from these sequences in the EF1-α phylogeny. Considering that this species possesses the two types of conidia but clustered with *H. sphaericus* which has a single type, it could perhaps be a

hybrid species or the sequences of ITS, LSU nrDNA and RPB2 deposited in GenBank by Tibpromma *et al.* (2016) do not belong to this taxon. Additional collections are needed to confirm its position and status.

Hermatomyces tectonae Doilom *et al.*, *Fungal Div.* **82**: 119 (2016).

Notes: In our opinion, *H. tectonae* should be considered of uncertain application because its description is ambiguous, being based on a mixture of *H. sphaericus* and *H. indicus*. The protologue (Doilom *et al.* 2016: 16) mentions two conidium types, but in our phylogenies the sequences of *H. tectonae* from the holotype and paratype specimens consistently clustered with sequences of *H. sphaericus* with a single conidium type. Moreover, Doilom *et al.* (2016: Fig. 6) depicts two different types of lenticular conidia; Fig. 6D shows globose or subglobose conidia not flattened in lateral view, while Figs 6G–J show oval, distinctly flattened,

ellipsoidal or broadly ellipsoidal conidia mixed with cylindrical conidia similar to those of *H. indicus*. Therefore, *H. tectonae* is synonymized here under *H. sphaericus*. Records of *H. tectonae* in Japan by Hashimoto *et al.* (2017) must also be attributed to *H. sphaericus*.

Hermatomyces uniseriatus S.M. Leão & Gusmão, *Nova Hedwigia* **96**: 482 (2013). (Fig. 16L)

Notes: Leão *et al.* (2013) described this species from rotten bark collected in Brazil. The cylindrical conidia of *H. uniseriatus* consistently have a single column of 3–4 cells with a verrucose, hyaline to pale brown apical cell lacking distinct, darker pigmentation. Without available molecular data, the phylogenetic placement of this species is currently unknown, but we consider it distinct in the genus based on morphological evidence.

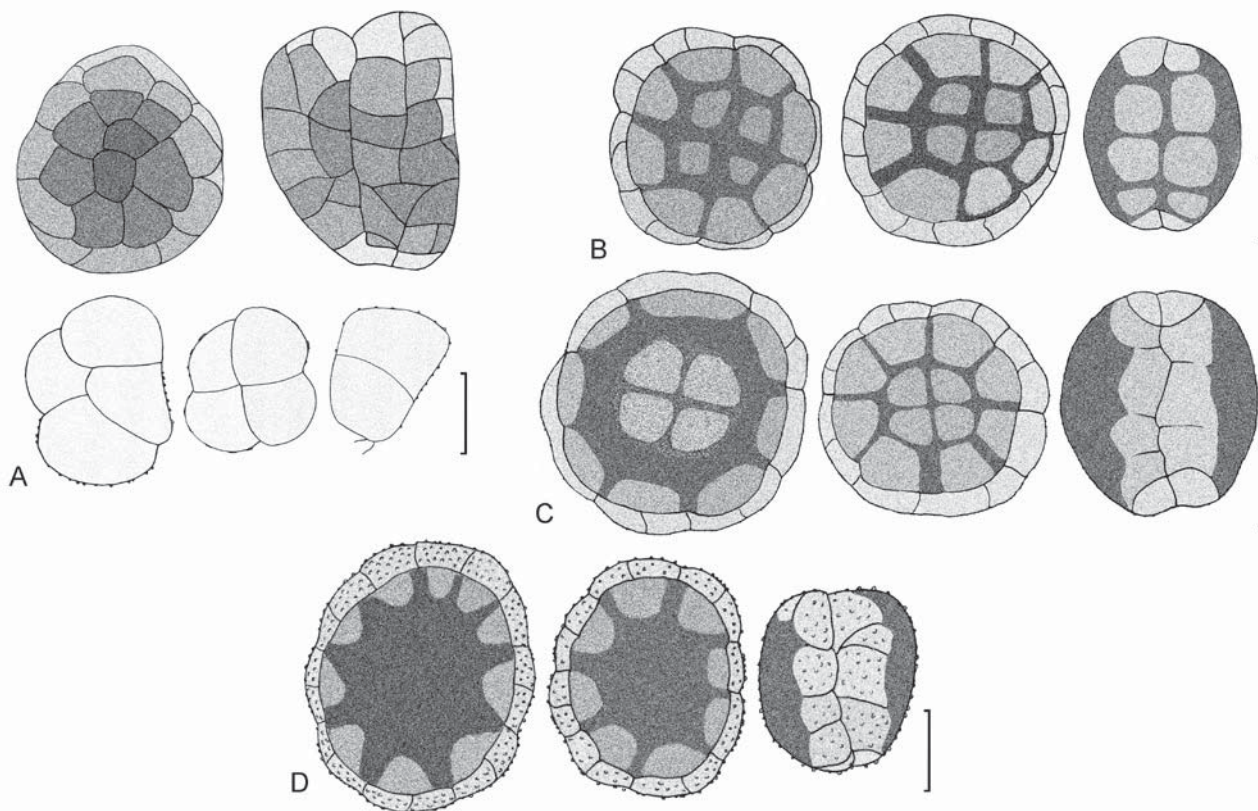


Fig. 17. Species of *Hermatomyces* with one conidium type, visual guide. **A.** *H. reticulatus*. **B.** *H. sphaericoides*. **C.** *H. sphaericus*. **D.** *H. verrucosus*. Bar = 20 µm.

Key to the species of *Hermatomyces*

- 1 Only lenticular conidia present 2
- Both lenticular and cylindrical conidia present 5
- 2 (1) Lenticular conidia with transverse, longitudinal and oblique septa, verrucose when young ***H. reticulatus***
- Lenticular conidia without longitudinal and oblique septa, ellipsoidal or oblong in side view with two distinct adpressed halves 3

3 (2)	Conidial ornamentation distinctly verrucose	H. verrucosus
	Conidial ornamentation smooth or verruculose	4
4 (3)	Conidia (15–)19–25 µm thick, L/T = 1.26	H. sphaericoides
	Conidia 16–23.5(–28) µm thick, L/T = 1.22	H. sphaericus
5 (1)	Cylindrical conidia two-celled or consisting of cells arranged in one column	6
	Cylindrical conidia multi-celled with cells usually not arranged in one column	7
6 (5)	Cylindrical conidia two-celled, constricted at the septa	H. constrictus
	Cylindrical conidia with cells arranged in one column, apical cell verrucose	H. uniseriatus
7 (5)	Cylindrical conidia with cells arranged in 1–2 columns	8
	Cylindrical conidia with cells arranged in 4 columns	14
8 (7)	Cylindrical conidia with apical cells verrucose, subhyaline or pale brown	H. bifurcatus
	Cylindrical conidia with apical cells smooth	9
9 (8)	Cylindrical conidia composed of 7 cells or less	10
	Cylindrical conidia composed of more than 7 cells	15
10 (9)	Lenticular conidia with peripheral cells constricted at the septa	11
	Lenticular conidia with peripheral cells not constricted at the septa	12
11 (10)	Lenticular conidia > 30 µm in length, cylindrical conidia without swollen lower cells	H. iriomotensis
	Lenticular conidia 24.5–32.5 µm in length, cylindrical conidia with swollen lower cells	H. krabiensis
12 (10)	Cylindrical conidia 9–12 µm wide at the broadest part	H. pandanicola
	Cylindrical conidia wider	13
13 (12)	Cylindrical conidia 22.5–35.5 µm in length	H. indicus
	Cylindrical conidia 15.5–27 µm in length	H. nabanheensis
14 (7)	Cylindrical conidia 30–38 × 20–26 µm, with bulbous, gray-brown apex	H. amphisporus
	Cylindrical conidia 15–40 × 10–15 µm, with pigmentation in vertical strands between two opposite columns	H. dimorphus
15 (9)	Cylindrical conidia with apical cells laterally or apically pigmented brown to blackish brown	H. megasporus
	Cylindrical conidia with dark brown pigmentation running from the top downwards and narrowing to a point close to the basal cell(s)	H. tucumanensis

DISCUSSION

This is the first comprehensive study of *Hermatomyces* in the Neotropics, based on phenotypic and molecular data of freshly collected specimens from Panama, and also including a revision of selected herbarium specimens. The occurrence of *Hermatomyces* species in the Neotropics was previously limited to the description of three species, including the generic type (Spegazzini 1911, Castañeda & Heredia 2000, Leão *et al.* 2013) and scattered records of the common *H. sphaericus* in a few countries (Holubová-Jechová & Mercado 1986). The high diversity discovered in Panama and represented by five morphologically and phylogenetically distinct new species is comparable with the one observed in south-east Asia (Hyde *et al.* 2017). Other previously known taxa, such as *H. reticulatus*, *H. sphaericus*, and *H. tucumanensis*, are reported for the first time from Panama based on complete specimen data. The number of

species collected in a single country, eight of the 16 currently recognized taxa, may suggest that this area represents a diversity hot-spot of the genus. *Hermatomyces* species seem to occur with the same frequency in both the Neotropics and the Palaeotropics, and several species, such as *H. indicus* and *H. sphaericus*, were shown to have wider distribution areas than previously thought. Collection efforts in neighboring countries targeting these conspicuous hyphomycetes might reveal further novelties in *Hermatomyces* and expand our understanding of their interspecific relationships.

The phylogenetic placement of *H. tucumanensis*, the generic type, was assessed for the first time using molecular data and based on three representative specimens. Its position supports the monophyly of the genus as a well delimited taxon within *Pleosporales* (Hashimoto *et al.* 2017). This is the first time that phylogenetic relationships have been assessed for the most common *H. sphaericus*, the currently available sequences in GenBank (KU999956,

KX033549, KX033518, KX036229, Y.-R. Ma, unpubl.) are erroneous and belong to a taxon outside *Hermatomyces* (Delgado *et al.* 2017). Our phylogenies retrieved from five loci yielded incongruent topologies but the same specimens always clustered together (Fig. 1). Bayesian analysis of the multilocus dataset (Fig. 2) revealed substantial evidence of incomplete lineage sorting in the evolution of *Hermatomyces*. Less possibly, the incongruent topologies of several species, notably *H. bifurcatus*, *H. nabanheensis* or *H. pandanicola*, indicate hybridization events because sexual morphs of *Hermatomyces* species have not yet been found.

When Hashimoto *et al.* (2017) introduced the new family name *Hermatomycetaceae*, the sporodochial conidiomata and two conidium types were considered the most distinctive family features. The presence of a hyphal subiculum is rare in *Pleosporales*, and when present is usually restricted to a more or less extensive, sometimes inconspicuous, mycelial growth under the ascomata or conidiomata, or even surrounding them (Zhang *et al.* 2012, Jaklitsch *et al.* 2018) but never reaching the degree of organization seen in *Hermatomyces*.

Colony architecture followed a very similar pattern in all new or previously described taxa despite some obvious differences, which might be useful in species level delimitation especially among taxa with both conidium types. *Hermatomyces bifurcatus*, for example, produces sporodochia with an inconspicuous subiculum and an almost flattened outer zone (Fig. 4A), while those of *H. megasporus* have a dense and well-developed subiculum of distinct height (Fig. 6A). However, differences in size or colour among specimens of the single conidium type species *H. sphaericus* (Fig. 9A–B) might be mainly due to ecological factors. The morphology of the subicular hyphae, particularly their appearance and wall ornamentation, was also more or less typical of each species, but differences in roughness or degree of geniculation were seen even within the same subiculum; this suggests variation due to age since the more ornamented or geniculate hyphae might be older. In contrast, the bottom of the fertile colony centre is more uniform among the species and is covered with a network of repent and brown hyphae where micronematous or semimacronematous conidiophores arise and are intermixed with subspherical or ampulliform conidiogenous cells closely packed together. These conidiogenous cells are apparently most related to the production of lenticular conidia, but both conidium types were found emerging from short conidiophores.

Cultures isolated from Panamanian specimens (Fig. 3) rarely sporulated and conidia were only seen in a very few strains of taxa with a single conidium type, such as *H. sphaericus* (Fig. 9L–O) or *H. sphaericoides* (Fig. 8L–N). This is consistent with previously described species which failed to sporulate even after extended incubation periods (Tibpromma *et al.* 2016, Hashimoto *et al.* 2017) and seems to be a regular tendency of *Hermatomyces* isolates. Matsushima (1993) was the only one who reported production of both types of conidia on Corn Meal agar for a putative new species misidentified as *H. tucumanensis*.

In the past, members of the genus have been regularly recorded during mycological surveys carried out in tropical regions, but variability in morphology was often disregarded and collections were frequently identified as *H. tucumanensis*

even though cylindrical conidia were not observed. This excessively conservative approach contrasts with the recent inflation in the number of newly described *Hermatomyces* species and reflects the opposite extreme of non-critical hunt for new species without serious consideration of currently recognized species (Doilom *et al.* 2016, Tibpromma *et al.* 2016). Importance given to molecular analyses with improperly edited sequences easily resulted in artifacts and misleading conclusions about phylogenetic affinities and taxonomic novelties. Based on our results, five new species are described, but seven species are synonymized, which is unusual considering that the ratio between the number of species recognized after *versus* before the study is 0.94 (16 vs. 17) and lower than studies on comparably large genera (Hawksworth & Lücking 2017). We propose for future studies aimed at *Hermatomyces* that descriptions of new species based on single specimens or isolates should be made only if distinct morphological characteristics are present (Hashimoto *et al.* 2017). In the particular case of taxa with one conidium type, reliable identification should be done only by including molecular sequence data. The ITS region seems to be a good barcode for resolution at species level in this genus, but the addition of sequence data from other coding regions is recommended. The use of rather conservative LSU as a sole marker (Tibpromma *et al.* 2017) should be avoided, as is the widespread use of SSU, and especially in the description of taxonomic novelties due to the extremely low variability of this region.

Our findings of several collections of the same *Hermatomyces* species from largely unrelated plant species (monocotyledons vs. dicotyledons) indicates that substrate identity has limited taxonomic value in this case and *Hermatomyces* species are more restricted by the physical condition of the substrate. The most commonly observed substrates in Panama were found to be heavily rotten hanging stems of lianas or twigs of various shrubs and trees while still attached to the tree or hanging also on the lianas. This aerial position allows the substrate to be drier than similar material in litter, which seems to be an important feature in the development of *Hermatomyces* species. Although such a substrate may be found in various ecosystems, the distribution of *Hermatomyces* species seems to be limited by elevation and climate. In our study, they were most frequently found in seasonal lowland tropical forest (at 45–100 m a.s.l.; UNACHI Botanical Garden and Los Algarrobos, with six species) and in elevations of about 1700 m (Boquete, Bajo Mono, with four species) but not above 1900 m where forests are humid throughout the year and despite numerous surveys performed at such localities. Interestingly, the permanently humid Atlantic site was less rich in both the diversity and frequency of occurrence of the colonies with only two species. Targeted sampling also showed that *Hermatomyces* colonies may be quite frequent, and virtually every second twig in the seasonal lowland forest at the Pacific site carried them. Sometimes, up to three species co-occurred on the same twig, only several centimetres apart. These results contrast with those of previous studies where *Hermatomyces* species were found on humid plant material or even on material immersed in water (Chang 1995, Barbosa & Gusmão 2011). The main pathway of dispersal of *Hermatomyces* species

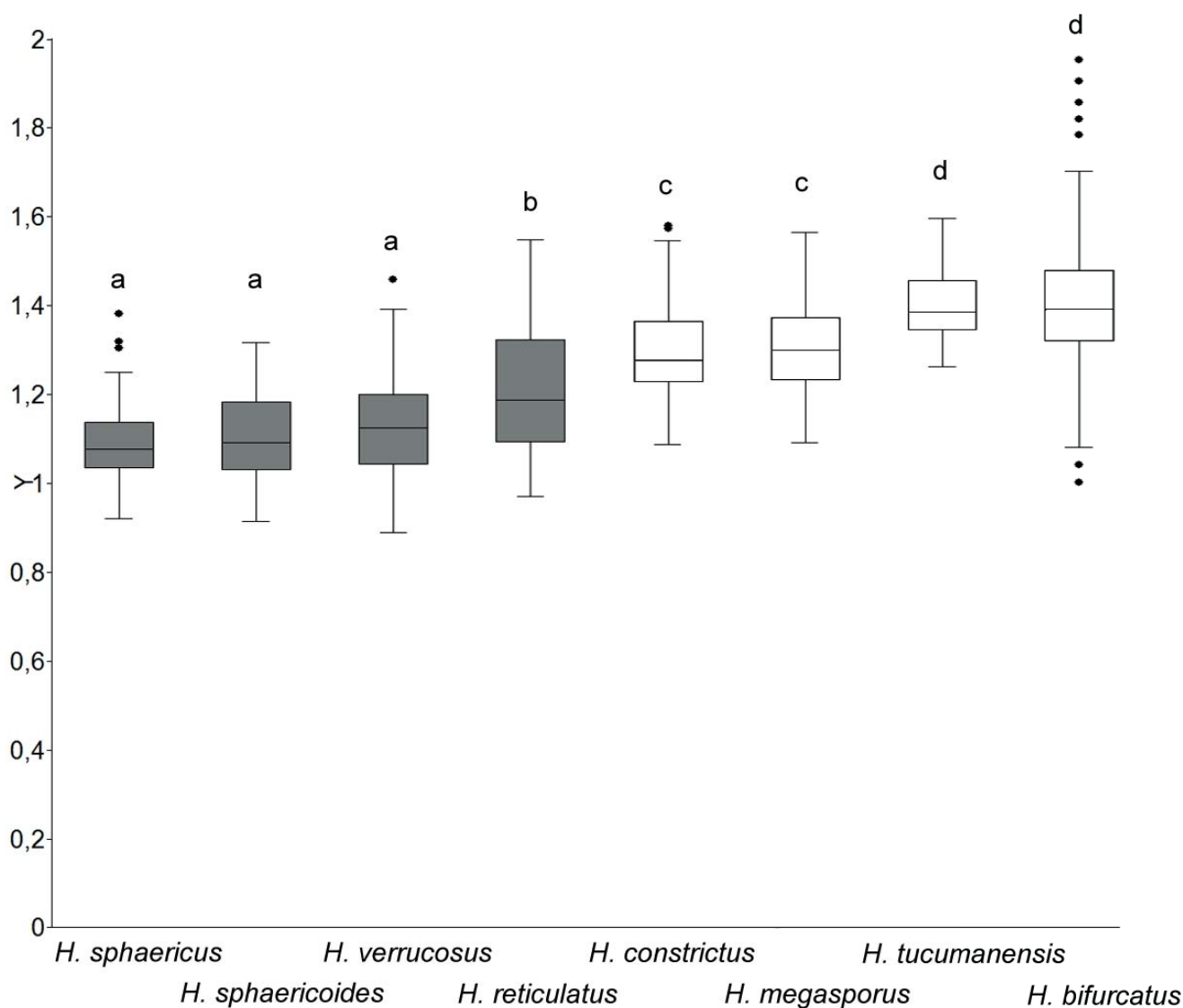


Fig. 18. Mean length/width ratios of lenticular conidia of *Hermatomyces* species collected in Panama. Species with one conidium type are indicated by gray boxes. Letters above the boxes indicate significant differences ($P < 0.05$) obtained from non-parametric Kruskal-Wallis comparison.

remains questionable. Their large, multicellular conidia do not suggest effective dispersal by wind and the dispersion by raindrops and bark flow seems more probable. The presence of sequence KU977564 originating from an unidentified endophyte isolated from seeds of *Apeiba membranacea* (*Malvaceae*) in the *H. sphaericus* clade (Fig. 1) indicates that *H. sphaericus* may have an endophytic phase.

Based on our multiple phylogenies, we did not find any clear pattern in evolution of one and two conidium type *Hermatomyces* species. The similarity of young lobed conidia of *H. reticulatus* to the cylindrical conidia of *H. bifurcatus*, and that both types of conidia are born as globose, blown ends of the conidiogenous cells, may suggest a potential common origin of these two types of conidium. Intuitively, it might be expected that monomorphic species would be ancestral, but this situation was not apparent in any phylogeny. In most cases (Fig. 1), species with two conidium types are found at the base of the phylogenetic trees. Therefore, we assume

that the two-type state is ancestral in *Hermatomyces*. We also found no evolutionary trend in the complexity of cylindrical conidia, although the morphology of lenticular conidia showed a pattern between the two groups of species. All species with one type have verruculose to verrucose conidia which are almost circular in front view ($L/W \sim 1$) compared to smooth conidia of broadly ellipsoidal to ellipsoidal conidia of those with two types ($L/W > 1.2$, Fig. 18). Rao & de Hoog (1986) assumed that the conidia differed in their ecological roles. The perpendicular position of the cylindrical conidia in the colony suggests they serve as a kind of protection or cushion to the lenticular conidia. Indeed, only the germination of lenticular conidia has been observed (Doilom *et al.* 2016), and the capacity of cylindrical conidia to germinate has not been proved. Even if cylindrical conidia function only as support to the lenticular conidia and do not contribute to dispersal, we recommend the maintenance of the term conidium in both cases to avoid further confusion.

ACKNOWLEDGMENTS

We are grateful to Markéta Šandová (PRM), Shannon Dominick (BPI) and Lee Davis (K(M)) for the loan of specimens in their care. We also thank Ivana Borovičková for technical assistance in obtaining the molecular data, and Alena Kubátová for preparation of specimens for electron microscopy, as well as Orlando Cáceres, Lukáš Janošik and Petr Zehnálek for assistance in the field. This study was supported by Institutional Support for Science and Research of the Ministry of Education, Youth and Sports of the Czech Republic. G.D. also acknowledges Magzoub Ismail, Michael Manning and Kamash Ramanathan (EMlab P&K) for provision of laboratory facilities. The Environmental Ministry of Panama (MiAmbiente) is thanked for issuing the collection and export permits (SE/APH-3-15, SE/AP-17-16, SEX/H-4-15 & SEX/H-6-16).

REFERENCES

- Barbosa FR, Gusmão LFP (2011) Conidial fungi from semi-arid Caatinga Biome of Brazil Rare freshwater hyphomycetes and other new records. *Mycosphere* **2**: 475–485.
- Becerra CI, Heredia G, Arias RM (2007) Contribución al conocimiento de los hongos anamorfos saprobios del Estado de Tabasco II. *Revista Mexicana de Micología* **24**: 39–53.
- Bouckaert R, Heled J, Kühnert D, Vaughan T, Wu C-H, et al. (2014) BEAST 2: A Software Platform for Bayesian Evolutionary Analysis. *PLoS Computational Biology* **10**: e1003537.
- Castañeda RF, Heredia G (2000) Two new dematiaceous hyphomycetes on *Cyathea* from Mexico. *Cryptogamie, Mycologie* **21**: 221–228.
- Chang HS (1995) Notes on Taiwan dematiaceous hyphomycetes, some species of the genera *Exserticlava*, *Craspedodidymum* and *Hermatomyces*. *Botanical Bulletin of Academia Sinica* **36**: 243–246.
- Conceição LB, Marques MFO (2015) A preliminary study on the occurrence of microscopic asexual fungi associated with bird nests in Brazilian semi-arid. *Mycosphere* **6**: 274–279.
- Darriba D, Taboada GL, Doallo R, Posada D (2012) jModelTest 2: more models, new heuristics and parallel computing. *Nature Methods* **9**: 772.
- Delgado G (2013) South Florida microfungi: a new species of *Ellisembia* (hyphomycetes) with new records from the U.S.A. *Mycotaxon* **123**: 445–450.
- Delgado G, Mena J, Calduch M, Decock C (2002) Hyphomycetes (hongos mitospóricos) del área protegida Mil Cumbres, Cuba occidental. *Cryptogamie, Mycologie* **23**: 277–293.
- Delgado G, Koukol O, Cáceres O, Piepenbring M (2017) The phylogenetic placement of *Ernakulamia cochinchensis* within *Pleosporales* (*Dothideomycetes*, *Ascomycota*). *Cryptogamie, Mycologie* **38**: 435–451.
- Doilom M, Dissanayake AJ, Wanasinghe DN, Boonmee S, Liu JK, et al. (2016) Microfungi on *Tectona grandis* (teak) in Northern Thailand. *Fungal Diversity* **39**: 1–76.
- Ellis MB (1971) *Dematiaceous Hyphomycetes*. Kew: Commonwealth Mycological Institute.
- Farr ML, Goos RD (1989) *Subicularium reticulatum* gen. et sp. nov., an unusual fungus from Venezuela. *Memoirs of the New York Botanical Garden* **49**: 66–69.
- Farris JS, Källersjö M, Kluge AG, Bult C (1994) Testing significance of incongruence. *Cladistics* **10**: 315–319.
- Hammer Ø, Harper DAT, Ryan PD (2001) PAST: Paleontological Statistics Software Package for Education and Data Analysis. *Palaeontologia Electronica* **4**: 1–9.
- Harahap I (2013) *Community structure of sporulating fungi on decaying litter of Shorea spp. at Dramaga Research Forest, Bogor*. MSc thesis, Bogor Agricultural University, Indonesia [in Indonesian].
- Hashimoto A, Matsumura M, Hirayama K, Tanaka K (2017) Revision of *Lophiotremataceae* (*Pleosporales*, *Dothideomycetes*): *Aquasubmersaceae*, *Cryptocoryneaceae*, and *Hermatomycetaceae* fam. nov. *Persoonia* **39**: 51–73.
- Hawksworth DL, Lücking R (2017) Fungal diversity revisited: 2.2 to 3.8 million species. *Microbiology Spectrum* **5**: FUNK-0052-2016.
- Heredia G, Mena J, Mercado A, Reyes M (1997) Tropical hyphomycetes of Mexico. II. Some species from the Tropical Biology Station “Los Tuxtlas”, Veracruz, Mexico. *Mycotaxon* **64**: 203–223.
- Heredia G, Mercado A (1998) Tropical hyphomycetes of Mexico. III. Some species from the Calakmul Biosphere Reserve, Campeche. *Mycotaxon* **68**: 137–143.
- Holubová-Jechová V, Mercado A (1986) Studies on Hyphomycetes from Cuba IV. Dematiaceous Hyphomycetes from the Province Pinar del Rio. *Česká Mykologie* **40**: 142–164.
- Hughes SJ (1953) Fungi from the Gold Coast. II. *Mycological Papers* **50**: 1–104.
- Hyde KD, Hongsanan S, Jeewon R, Bhat DJ, McKenzie EHC, et al. (2016) Fungal diversity notes 367–490: taxonomic and phylogenetic contributions to fungal taxa. *Fungal Diversity* **80**: 1–270.
- Hyde KD, Norphanphoun C, Abreu VP, Bazzicalupo A, Chethana KWT, et al. (2017) Fungal diversity notes 603–708: taxonomic and phylogenetic notes on genera and species. *Fungal Diversity* **87**: 1–235.
- Jaklitsch WM, Checa J, Blanco MN, Olariaga I, Tello S, et al. (2018) A preliminary account of the *Cucurbitariaceae*. *Studies in Mycology* **90**: 71–118.
- Leão SM, Gusmão LFP, Castañeda RF (2013) Conidial fungi from the semi-arid Caatinga biome of Brazil. Three new species and new records. *Nova Hedwigia* **96**: 479–494.
- Liu JK, Hyde KD, Jeewon R, Phillips AJL, et al. (2017) Ranking higher taxa using divergence times: a case study in *Dothideomycetes*. *Fungal Diversity* **84**: 75–99.
- Liu YJ, Whelen S, Hall B D (1999) Phylogenetic relationships among ascomycetes: evidence from an RNA polymerase II subunit. *Molecular Biology and Evolution* **16**: 1799–1808.
- Martínez K, Heredia G, Rosique E, Cappello S (2014) Hongos anamorfos asociados a restos vegetales del Parque Estatal “Agua Blanca”, Macuspana, Tabasco, México. *Acta Botánica Mexicana* **107**: 99–119.
- Matsushima T (1993) *Matsushima Mycological Memoirs* **7**: 1–75.
- Mel’nik VA (2000) *Definitorium fungorum Rossiae Classis Hyphomycetes*. Fasc. 1. *Fam. Dematiaceae*. St Petersburg: Nauka.
- Mel’nik VA, Novozhilov YK, Popov ES, Alexandrova AV, Kovalenko AE (2013) Anamorphic fungi of Vietnam III (in Russian). *Mikologiya i Fitopatologiya* **47**: 316–320.
- Mercado A (1984) *Hifomicetes Dematiáceos de Sierra del Rosario, Cuba*. Havana: Editorial Academia.
- Mercado A, Delgado G, Mena J, Guarro J (2002) Some hyphomycetes (mitosporic fungi) from “Ciénaga de Zapata” Biosphere Reserve (Cuba). *Boletín de la Sociedad Micológica de Madrid* **26**: 183–

- 188.
- O'Donnell K (1993) *Fusarium* and its near relatives. In: *The Fungal Holomorph: mitotic, meiotic and pleomorphic speciation in fungal systematics* (Reynolds DR & Taylor JW, eds): 225–233. Wallingford: CAB International.
- O'Donnell K, Cigelnik E (1997) Two divergent intragenomic rDNA ITS2 types within a monophyletic lineage of the fungus *Fusarium* are nonorthologous. *Molecular Phylogenetics and Evolution* **7**: 103–116.
- Piepenbring M (2006) Checklist of fungi in Panama. *Puente Biológico* **1**: 1–190.
- Piepenbring M (2007) Inventing the fungi of Panama. *Biodiversity and Conservation* **16**: 73–84.
- Prasher IB, Singh G (2015) New and interesting *Hyphomycetes* from North-Western Himalayas. *Kavaka* **44**: 83–86.
- Prasher IB, Sushma (2014) *Hermatomyces indicus* sp. nov. (Hyphomycetes) from India. *Nova Hedwigia* **99**: 551–556.
- Pratibha J, Raghukumar S, Bhat DJ (2012) Diversity of litter degrading microfungi from the forests of Western Ghats, India. In: *Biodiversity and Taxonomy* (Kumar AB, Nayar MP, Varma RV, Peethambaran CK, eds): 195–210. Delhi: Narendra Publishing House.
- Rambaut A, Drummond AJ (2009) *Tracer*. Version 1.5. Available from: <http://beast.bio.ed.ac.uk>
- Rao V, Hoog GS de (1986) New or critical hyphomycetes from India. *Studies in Mycology* **28**: 1–84.
- Rehner SA, Buckley E (2005) A *Beauveria* phylogeny inferred from nuclear ITS and EF1-alpha sequences: evidence for cryptic diversification and links to *Cordyceps* teleomorphs. *Mycologia* **97**: 84–98.
- Ronquist F, Teslenko M, Van der Mark P, Ayres DL, Darling A, et al. (2012) MrBayes 3.2: Efficient Bayesian phylogenetic inference and model choice across a large model space. *Systematic Biology* **61**: 539–542.
- Spegazzini C (1911) Mycetes Argentinenses. Series V. *Anales del Museo Nacional de Buenos Aires Series* **3**: 329–467.
- Stamatakis A, Hoover P, Rougemont J (2008) A rapid bootstrap algorithm for the RAxML web-servers. *Systematic Biology* **75**: 758–771.
- Starbäck K (1899) Ascomyceten der ersten Regnell'schen Expedition. I. *Bihang till Kongl. Svenska Vetenskaps-akademiens Handlingar* **25**: 1–68.
- Swofford DL (2002) *PAUP*: phylogenetic analysis using parsimony (*and other methods)*. Version 40b10. Sunderland, MA: Sinauer Associates.
- Taylor J, Hyde KD (2003) *Microfungi of Tropical and Temperate Palms*. [Fungal Diversity Research Series no. 12.] Hong Kong: Fungal Diversity Press.
- Tibpromma S, Bhat JD, Doilom M, Lumyong S, Nontachaiyapoom S, et al. (2016) Three new *Hermatomyces* species (*Lophiotremataceae*) on *Pandanus odorifer* from Southern Thailand. *Phytotaxa* **275**: 127–139.
- Tibpromma S, Hyde KD, Jeewon R, Maharachchikumbura SSN, Liu J-K, et al. (2017) Fungal diversity notes 491–602: taxonomic and phylogenetic contributions to fungal taxa. *Fungal Diversity* **83**: 1–261.
- White TJ, Bruns T, Lee S, Taylor J (1990) Amplification and direct sequencing of fungal ribosomal RNA genes for phylogenetics. In: *PCR Protocols: a guide to methods and applications* (Innis MA, Gelfand DH, Sninsky JJ, White TJ, eds): 315–322. San Diego: Academic Press.
- Zhang T, Zhao G, Zhang X, Liu H, Wu Y (2009) 26 Genera of *Dematiaceous Dictyosporous Hyphomycetes excluding Alternaria*. [Flora Fungorum Sinicorum no. 31.] Beijing: Science Press.
- Zhang Y, Crous PW, Schoch CL, Hyde KD (2012) *Pleosporales*. *Fungal Diversity* **53**: 1–221.