



RESEARCH ARTICLE

Peculiarities of the formation and subsequent removal of the circulating immune complexes from the bloodstream during the process of digestion [version 1; referees: 2 approved, 1 approved with reservations]

Sergej B. Landa¹, Pavel V. Korabliov², Elena V. Semenova¹, Michael V. Filatov  ^{1,3}

¹Division of Molecular and Radiation Biophysics, National Research Center, Gatchina, 188300, Russian Federation

²State Research Institute Center for Innovative Medicine, Vilnius, LT-01102, Lithuania

³Saint Petersburg State Research Institute of Phthisiopulmonology of the Ministry of Healthcare of the Russian Federation, Saint Petersburg, 191036, Russian Federation

v1 First published: 21 May 2018, 7:618 (doi: [10.12688/f1000research.14406.1](https://doi.org/10.12688/f1000research.14406.1))
 Latest published: 21 May 2018, 7:618 (doi: [10.12688/f1000research.14406.1](https://doi.org/10.12688/f1000research.14406.1))

Abstract

Background: Large protein aggregates, known as circulating immune complexes (CICs), are formed in biological fluids as a result of the development of the body's immune response to various provoking factors. The kinetic characteristics of the formation and removal of immune complexes (ICs), their physical parameters, the isotopic composition of immunoglobulins (Igs) and the antigenic component of the CICs may reflect certain aspects of certain pathological and metabolic processes taking place in humans and animals. The aim of this study is to assess the kinetic characteristics of the formation and removal of the CICs that form in blood after eating. We also analyze the changes in the isotopic composition of Igs of ICs that accompany this biological process in rodents and humans.

Methods: We identified the CICs, which differed in size and class of Igs, using dynamic light scattering. To remove ICs from the plasma, we used immune-affinity sedimentation. Monoclonal antibodies for the Igs of different isotypes were added to the plasma samples to determine the isotopic composition of the ICs.

Results: A large number of ICs were formed in the blood of rats and humans after eating (food CICs). In rats, food ICs are almost immediately filtered in the liver, without circulating in the bloodstream through the body. In humans, the level of food ICs in the blood increases for 3.5 h after ingestion, then within 7–8 h their gradual removal takes place. It was found that in the process of digestion in humans, the isotopic composition of Igs in the CICs changes and becomes more diverse.




Conclusions: The molecular–cellular mechanisms of the formation and utilization of food CICs in humans and rodents do not match completely.

Keywords

circulating immune complexes, digestion, dynamic light scattering method, isotypes of immunoglobulins

Open Peer Review

Referee Status:   

	Invited Referees		
	1	2	3
version 1 published 21 May 2018	 report	 report	 report

- Boris A. Margulis**, Institute of Cytology of Russian Academy of Science, Russian Federation
- József Prechl** , R&D Laboratory, Diagnosticum zrt, Hungary
- Vadim Govorun**, Federal Research and Clinical Center of Physical-Chemical Medicine of Federal Medical Biological Agency (FRCC PCM), Russian Federation

Discuss this article

Comments (0)

Corresponding author: Michael V. Filatov (fil_53@mail.ru)

Author roles: **Landa SB:** Investigation, Methodology, Visualization, Writing – Review & Editing; **Korabliov PV:** Investigation, Visualization, Writing – Review & Editing; **Semenova EV:** Validation, Writing – Original Draft Preparation, Writing – Review & Editing; **Filatov MV:** Conceptualization, Methodology, Project Administration, Resources, Writing – Review & Editing

Competing interests: No competing interests were disclosed.

Grant information: The author(s) declared that no grants were involved in supporting this work.

Copyright: © 2018 Landa SB *et al.* This is an open access article distributed under the terms of the [Creative Commons Attribution Licence](#), which permits unrestricted use, distribution, and reproduction in any medium, provided the original work is properly cited. Data associated with the article are available under the terms of the [Creative Commons Zero "No rights reserved" data waiver](#) (CC0 1.0 Public domain dedication).

How to cite this article: Landa SB, Korabliov PV, Semenova EV and Filatov MV. **Peculiarities of the formation and subsequent removal of the circulating immune complexes from the bloodstream during the process of digestion [version 1; referees: 2 approved, 1 approved with reservations]** *F1000Research* 2018, 7:618 (doi: [10.12688/f1000research.14406.1](https://doi.org/10.12688/f1000research.14406.1))

First published: 21 May 2018, 7:618 (doi: [10.12688/f1000research.14406.1](https://doi.org/10.12688/f1000research.14406.1))

Introduction

Circulating immune complexes (CICs) are macromolecular structures formed as a result of the specific interaction of antigens with bivalent or multivalent antibodies in biological body fluid (such as blood, saliva, urine or cerebrospinal fluid). The composition of the CICs is very diverse: CICs can contain a sufficiently large number of different components, including antigens, immunoglobulins (Igs), lipoproteins, proteins of the complement system, proteins of coagulation, adhesion^{1,2}.

Immune complexes (ICs) are formed due to the development of the body's humoral immune response to various provoking factors and are thought to reflect certain aspects of this process. It is believed that under normal conditions, CICs are rapidly eliminated from the bloodstream; however, with prolonged antigenic effects, their blood levels may rise³. Sedimentation of CICs on the vessel walls and in basal cell membranes stimulates inflammatory processes in these tissues and cells⁴, leading to serious tissue damage.

The content of ICs increases in the blood serum and other biological fluids during various systemic disorders, including rheumatological and autoimmune diseases, viral, bacterial and parasitic infections, malignant neoplasms and acute allergic reactions⁴⁻¹⁴. The levels of CICs change during the process of pathogenesis, as does their structure^{1,6,9,15-24}. Physico-chemical parameters (primarily size) and biological activity of IC depends on the properties of the antigen and the functional characteristics of the antibodies (including isotype, glycosylation and the ability to bind complement)^{9,25-28}. At the same time, information on CIC composition is more useful than information on free antigens and antibodies. Thus, a comprehensive analysis of CICs can serve as a basis for the diagnosis of various pathologies associated with defects in the functioning of the immune system, and could have prognostic value and allows for the monitoring of the effectiveness of the therapy that is used. Along with this, the detection of ICs in biological fluids, estimation of their dimensionality and determination of the isotopic composition of the Igs component in the CICs will contribute to a better understanding of the characteristics of certain metabolic processes taking place in humans and animals.

We have developed a relatively simple method of determining the CICs, differentiated by the size and class of Igs, which makes it possible to study the structural and functional features of the organization of native ICs²⁹⁻³². The method is based on the analysis of the contribution of CICs, formed in biological fluids, to the light scattering recorded using a dynamic light scattering (DLS) spectrometer. This is a sensitive and accurate method, characterized by the nature of the measurement, which does not perturb the system that is being studied. Using this technique, it is possible not only to register the CICs that already exist in the blood plasma, but also to study the formation of new ICs upon the addition of exogenous materials and to estimate their distributions according to sizes, from tens to thousands of nanometres. In addition, DLS makes it possible to identify Igs of different classes and isotypes in the composition of circulating ICs without disturbing the structural integrity of the latter and at their minimum concentrations^{30,32}.

In the present study, we used the DLS method to assess the peculiarities of the formation and subsequent removal of the CICs from the bloodstream in mammals (rats) and humans during digestion.

The aim of the present study is to assess the kinetic characteristics of the formation and removal of CICs formed in human blood after ingestion (food CICs), and analyse changes in the isotopic composition of Igs of ICs that accompany this biological process. Given that rodents, in particular rats, are often used as laboratory models in the study of digestion processes, we also performed a series of similar experiments in rats using the DLS method.

Methods

Determination of the scattering particles' size by means of DLS

The measurements were performed on a PLSS laser correlation spectrometer (INTOX MED LLC, Russia). We used a heterogeneous research scheme. The measurements were carried out in the band of 2,048 or 8,096 Hz. With these measurement parameters, the time taken to study one sample was about 15 min.

The particle sizes in the study samples were calculated using previously described software products included with the PLSS laser correlation spectrometer (QELS for Windows, Version 3.2, Division of Molecular and Radiation Biophysics, National Research Center "Kurchatov Institute" B.P.Konstantinov St Petersburg Nuclear Physics Institute, Russia)^{30,33}. The measurement result is presented as a histogram of the particle size distribution (histogram of the subfraction composition), in which the abscissa is the scale of dimensions in nanometers, and the contribution to the total scattering of a sample of particles of a given size in percent is plotted along the ordinate axis. In this case, the total scattering of all particles of the sample is taken as 100%. For each sample, measurements were taken at least three times. Statistical processing of the obtained data was carried out using the regularization algorithm³³ with the help of QELS 3.2 software, included in the set of the PLSS laser correlation spectrometer.

See [Supplementary File 1](#) for more information.

Preparation of blood samples for analysis through the DLS method

In the experiment, 10 healthy men aged 24–40 years participated voluntarily. All volunteers were chosen from the staff of the Division of Molecular and Radiation Biophysics where the study was performed (National Research Center "Kurchatov Institute" B.P.Konstantinov St Petersburg Nuclear Physics Institute, Russia). All the participants conducted routine daily activities and were not treated with any medical substances for the period of the experiments. Subjects were excluded if they were taking medication during the period of the experiment. Recruitment of exclusively male volunteers was accidental, and it does not bear any significance in this study.

Use of biological material (plasma) was approved by the Ethical Committee of Polenov Russian Scientific Research

Institute of Neurosurgery (Saint Petersburg, Russia) (23/H-18 of 23/10/2017). The Institute is authorized to perform research involving human participants according to guidelines from the Ministry of Healthcare of the Russian Federation (Order of the Ministry of Health of the Russian Federation “On the Ethics Committee of the Ministry of Health of the Russian Federation” of 10.07.2015 № 435n) that are in agreement with the principles expressed in the Declaration of Helsinki. Written informed consent was obtained from all donors involved to participate in the study. All blood samples were de-identified.

Blood sampling (5 ml) was done before meals and at 1.5, 3.5, 5, 7, 12 and 14 h after eating. First venous blood withdrawal was performed at 8 A.M. from fasted participants. After that, volunteers were provided with hot three-course breakfast (vegetable salad, main course (either meat or fish with garnish), either tea or coffee with a cake). The acquisition of blood plasma was carried out by the standard method³⁴. As an anticoagulant, heparin was added at a final concentration of 50 U/ml.

Removal of blood cells was carried out by centrifugation at 1,500g for 15 min. The supernatant was collected and for the sedimentation of platelets and decay products of the cell elements, 1 ml was centrifuged for 30 min at 12,500g. The resulting plasma sample was then diluted three times with standard isotonic phosphate buffer (pH 7.2) containing 10 mM EDTA and 1 mM sodium azide.

Removal of ICs from blood plasma

To remove ICs from the plasma, we used immune-affinity sedimentation: an excess of protein A, immobilized on sepharose beads (Pasteur Research Institute of Epidemiology and Microbiology, Russia), was added to the blood plasma. Protein A is a protein isolated from the surface of the cell wall of *Staphylococcus aureus*, it binds the Igs of mammals well, particularly IgG³⁵.

After a 10-min incubation at room temperature, the immobilized protein A, together with the Igs bound thereto, were removed from the plasma by centrifugation of 1,000g for 10 min. The supernatant, which is a blood plasma, devoid of Igs (both in free form and in the composition of ICs), was diluted three times with phosphate buffer.

Preparation of the samples for the determination of the isotopic composition of the immunological component of IC

Monoclonal antibodies to human Igs of different isotypes were added to the plasma samples to determine the isotopic composition of the ICs formed during digestion. Adding antibodies to human Igs of different isotypes to the biological fluid results in the specific binding of ICs containing Igs of this isotype, and in the formation of even larger aggregates.

To the samples of filtered blood plasma (180 µl), prepared according to standard procedure^{30,33}, 20 µl of a solution of monoclonal murine antibodies to human Igs of different isotypes, both in pure form and in various combinations, were added (See section “Antibody details”). In particular, we used antibodies to human IgG1, IgG2, IgG3, IgG4 and IgA. Previously,

the antibodies were diluted five times with standard isotonic phosphate buffer (pH 7.2) containing 10 mM EDTA and 1 mM sodium azide.

Antibody details

In our study, we used only monoclonal murine antibodies (MMA) to human Igs of different isotypes. All antibodies (Test kit “Diagnostic monoclonal antibodies for light and for heavy polypeptide chains of human immunoglobulins” produced according to Specifications 9398-001-11122195-08) were custom-produced for us by Polignost LLC (Saint Petersburg, Russia).

MMA to human IgA (item number: 1H9)³⁶.

Antibodies were raised in the hybridoma strain originated as the result of hybridization of myeloma PX 653A cells with splenocytes from inbred mice SJL/J immunized with the mixtures of purified myeloma proteins IgA of κ and λ types. Antibodies recognize the epitope of the α chain, and they bind effectively both with human IgA1 and IgA2. MMA were purified with affinity chromatography on protein G.

MMA to human IgG1 (item number: 2C11)³⁷.

Antibodies were raised in the hybridoma strain originated as the result of hybridization of myeloma PX 653A cells with splenocytes from inbred mice SJL/J immunized with the mixture of several human myeloma proteins IgG1. Antibodies were purified with affinity chromatography on protein G.

MMA to IgG2 (item number: 3C7).

MMA to IgG3 (item number: 5G12).

MMA to IgG4 (item number: 5C7).

The procedures of the latter three MMA productions were the same as described above with application of immunogens IgG2, IgG3 and IgG4, respectively.

Preparation of rat blood serum samples for analysis of food CICs

In this study, six healthy adult 250–280 g male Wister strain white albino rats (10–11 weeks old) (FGUP PLZH Rappolovo, Russia) were studied. All procedures for rat care and use were conducted in accordance with the National Standard of the Russian Federation GOST R 53434-2009: Principles of good laboratory practice (introduced 01.03.2010 by Federal Agency for Technical Regulation and Metrology, published by Standardinform, Moscow, 2010). The protocol was approved by scientific committee of the Division of Molecular and Radiation Biophysics of National Research Center “Kurchatov Institute” B.P.Konstantinov St Petersburg Nuclear Physics Institute (Gatchina, Russia).

Animals were individually housed in standard polycarbonate cages (width: 206 mm, depth: 365 mm, height: 197 mm) and maintained under standard conditions of temperature ($22 \pm 2^\circ\text{C}$), humidity ($55 \pm 10\%$), artificial 12-hour light–dark cycle (lights on at 8:00 A.M., lights off at 8:00 P.M.).

The rats were divided into two groups (n=3): those that received complete dietary rations for 3 days (group one) and those that did not receive any food at all (group two). For our tests, animals were allocated to groups in a random manner. The rats in group one were fed on the nutrient extruded and granulated food designed for experimental rodents (LLC) Laboratorkorm, Russia), and they had *ad libitum* access to it. All animals had *ad libitum* access to water.

All efforts were made to ameliorate any suffering of animals. Rats from both groups were anesthetized for the euthanasia with diethyl ether (PJSC “Medkhimprom”, Russia) through the respiratory route by exposing animals to the ether couples for approximately 2 min in an airtight transparent acrylic jar. Dead rats were opened, and their blood was sampled from the Vena portae and from the Vena cava inferior.

Blood was collected into the standard tubes with a clot activator and incubated at 37°C for 60 min, until the clot was completely formed. The clot was separated and the serum was centrifuged at 1,500g for 15 min. The supernatant was collected and again centrifuged for 30 min at 12,000g. The obtained serum sample was diluted three times with isotonic PBS (pH 7.2) containing 10 mM EDTA and 1 mM sodium azide. Each analysed serum sample was divided into two aliquots, one of which served as a control. To the other, 10% (v/v) of protein A, immobilized on sepharose microspheres (20 µl microspheres were added to 180 µl serum), was added.

Statistical analysis

Statistical processing of the obtained data was carried out using the regularization algorithm³³ through application of software QELS 3.2, included in the set of the PLSS laser correlation spectrometer (QELS for Windows, Version 3.2, National Research Center “Kurchatov Institute” B.P.Konstantinov St Petersburg Nuclear Physics Institute, Russia).

In each individual experiment, the error in determining the mean hydrodynamic size of the light-scattering particles in the study samples of biological fluids can be several tenths of a percent (and this value is reproduced when the experiment is repeated on the same sample). The error in determining the mean hydrodynamic size of the light-scattering particles on a series of equally prepared samples is usually higher by an order of magnitude.

To analyze the dynamic of accumulation of food ICs and their subsequent dissipation in blood serum samples from 10 volunteers, applying DLS, we calculated mean and standard deviation (SD) at several time points for the following parameters of interest: hydrodynamic radius of the scattering particles, their contribution to the light scattering. Mean inter-group difference was calculated with 99% confidence intervals.

The same calculations were carried out to evaluate isotopic composition of immunoglobulins of human CIC after eating.

Computations were performed using MS Excel 2007 standard statistical functions (Statistical Package Microsoft Office 97 for Windows, Redmond, USA).

Results

Peculiarities of the formation and utilization of the CIC during digestion in rats

In the experiment, two groups of rats participated: the first group of animals received a complete food ration for 3 days and the second was starved. For the analysis by the DLS method, serum from the rat portal vein of the liver and from the inferior vena cava was used.

To reveal the CICs that formed during the process of digestion, we applied the approach associated with the selective removal of Igs and their complexes from the analysed blood sample using protein A immobilized on sepharose beads, followed by centrifugation^{31,32}. Comparison of the histograms of the subfractional composition of particles of blood serum samples, those processed with protein A and those not processed obtained by the DLS method, allows for the recording of the presence or absence of a fraction of large scattering particles, the hydrodynamic radius (R_h) of which corresponds to the size of ICs.

The results from analysis of the blood serum from the portal vein of rats that received a full-fledged food ration are shown in [Figure 1](#). It can be seen that in the blood of the animal, there are large protein aggregates, with an R_h of the order of 200–300 nm ([Figure 1A](#)), disappearing after treatment of the serum with protein A immobilized on sepharose microspheres ([Figure 1B](#)). We have identified these protein aggregates as food CICs.

The portal vein in animals is a venous trunk, through which blood from the stomach and intestine passes into the liver. Thus, in the blood of a satiated rat that is coming from the digestive tract to the liver, a substantial amount of CICs are observed ([Figure 1A](#)). In the blood serum taken from the portal vein of the rats that were starved for three days, the CICs are practically absent ([Figure 1C](#)).

The results of research of the blood samples from the portal vein of the liver and from the inferior vena cava of the fed and hungry rats also differ substantially; this is evidenced by the data presented in [Figure 2](#).

The inferior vena cava collects venous blood from most of the abdominal and pelvic organs, the walls of these cavities and lower limbs. By comparing blood from the portal vein of the liver and inferior vena cava, it is possible to obtain the information about changes in blood composition due to the filtration processes performed by the liver.

Comparison of [Figure 2A and B](#) shows no changes in the blood serum particle subfractional composition of the rats that starved for 3 days, before and after filtration in the liver. The contribution to the scattering of the fraction of particles matching the ICs in the blood that enters the liver of their gastrointestinal tract (6.1%, [Figure 2A](#)) practically matches the analogous indicator in the blood after the passage through the liver (5.8%, [Figure 2B](#)) in the starving rats.

Contrary to that, the contribution to the scattering of particles with the R_h that matches the ICs in the blood sample, taken from the portal vein of the rats that received a normal food

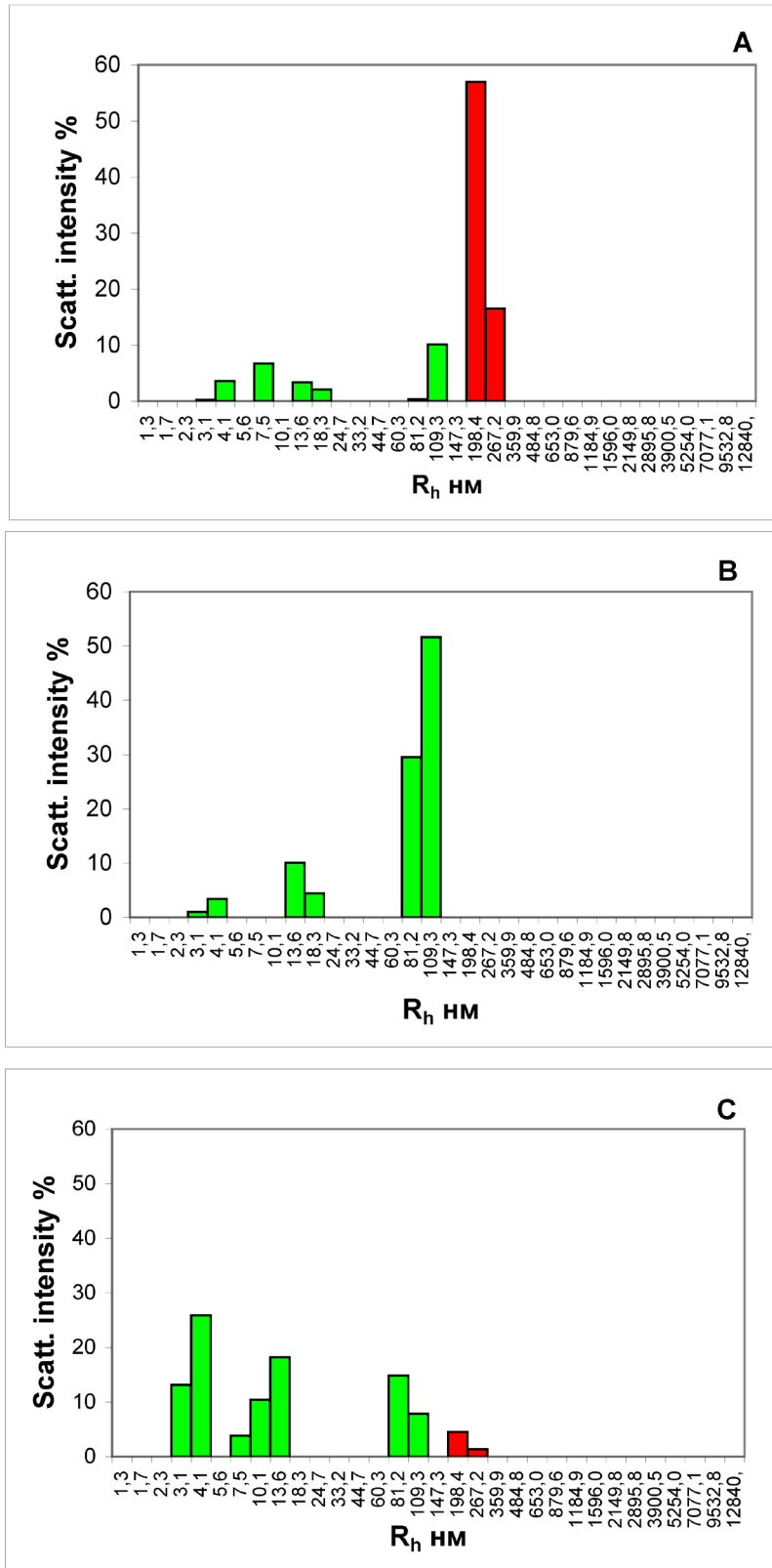


Figure 1. Histograms of the particle distribution by the size of the blood serum samples from the portal vein of liver of the rat that received a wholesome food ration for 3 days (**A** and **B**) and the rat that starved for 3 days (**C**). The figure presents the results of analyses of the blood serum samples each taken from one most representative rat from each experimental group. (**A**, **C**) Samples of native serums. (**B**). Sample of serum, treated with protein A, immobilized on the agarose microspheres. The x-axis is the hydrodynamic radius of the particles in nm, the y-axis is the contribution to the scattering in %.

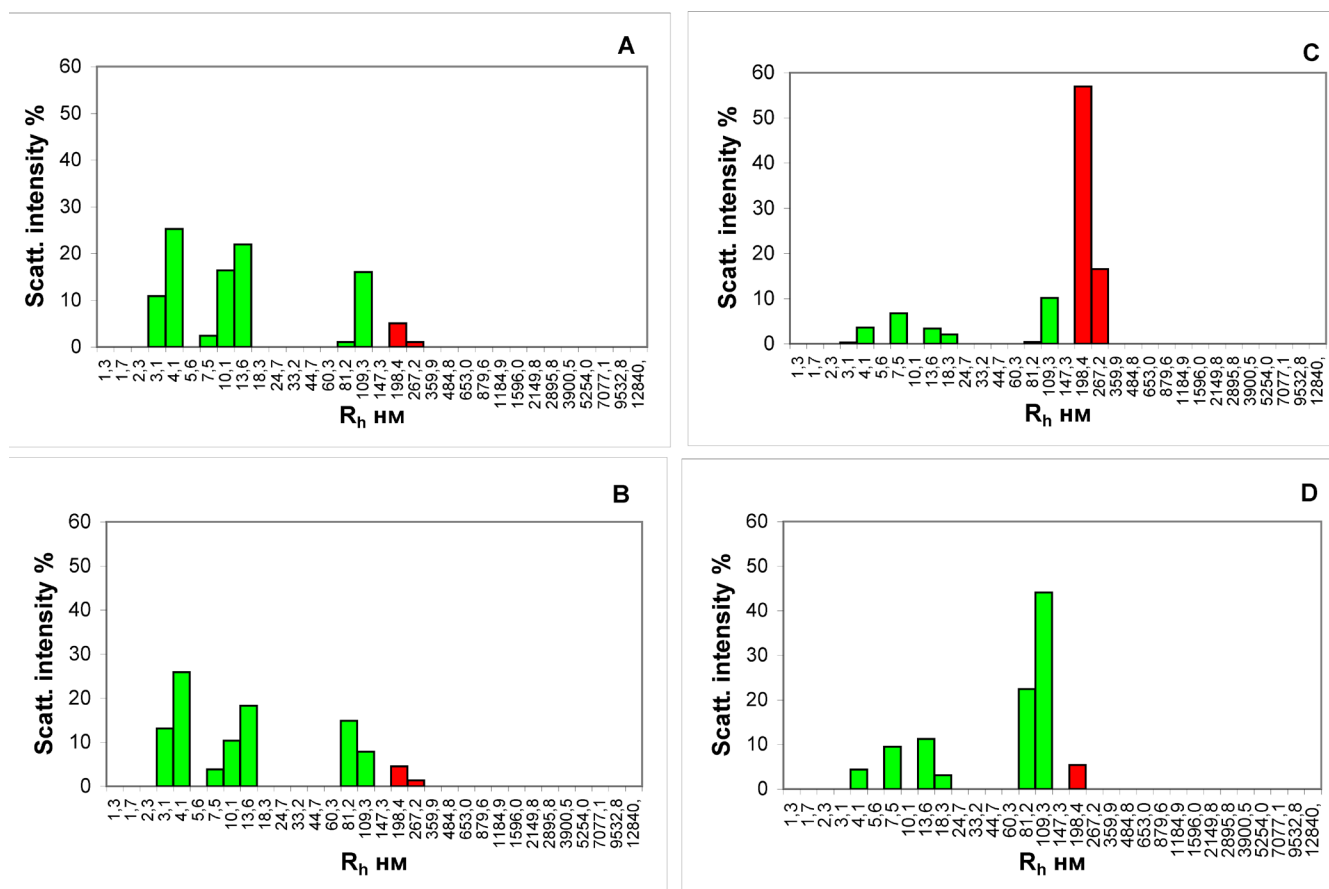


Figure 2. Histograms of the particle size distribution of the serum samples of hungry rats (**A** and **B**) and rats receiving a wholesome food ration (**C** and **D**). Blood was taken from the portal vein of the liver (**A** and **C**) and the inferior vena cava (**B** and **D**). x-axis, the hydrodynamic radius of the particles in nm; y-axis, the contribution to the scattering in %.

ration is higher by more than an order of a magnitude than the contribution to scattering of particles of the same size in a blood sample taken from the inferior vena cava (73.3%, [Figure 2C](#) versus 5.4%, [Figure 2D](#)).

Thus, the presented results allow us to state that in the process of digestion, a substantial number of ICs that diffuse into the blood are formed in the intestine of rats. These food ICs are completely utilized in the liver.

Peculiarities of the formation and utilization of the CICs during digestion in humans

In total, 10 healthy men participated in the experiment. Blood sampling was done before meals and at 1.5, 3.5, 5, 7, 12 and 14 h after eating.

We determined the total contribution to the scattering of the fraction of ICs and the isotopic composition of the Ig component of the food CICs. Analysis of the results showed that the level of ICs in all inspected donors gradually increase in the blood, reaching its maximum at 3.5 h after eating.

As seen in [Figure 3](#), the base level of the contribution to the scattering of the fraction of particles matching the ICs in the serum was less than 10%. The maximum IC contribution

to the scattering was observed after 3.5 h, when it reached almost 80%. Then, the IC fraction contribution of the scattering decreased, reaching the basal level 14 h after eating.

[Table 1](#) presents the subfractional composition of the particles (the fraction that matches the ICs) of the serum of all the examined donors before eating and at the point of the maximum accumulation of ICs after eating (after 3.5 h). Before meals, there is an insubstantial variation in the size of the recorded ICs and a more substantial difference in the contribution to the scattering of IC fractions in the donors. At 3.5 h after eating, when the level of food complexes in the blood reaches its maximum, the sizes of the complexes for different donors practically match.

Analysis of changes in the isotopic composition of the Ig component of the CICs during the process of digestion in humans

As reported previously, the addition of antibodies to Igs of different isotypes to the blood plasma results in the specific binding of ICs, containing Igs of this isotype, and the formation of even larger protein structures. The appearance of a new fraction of light-scattering particles with a large R_h on the histograms of the subfractional composition of particles, obtained by the DLS method, attests to the presence of this variation of

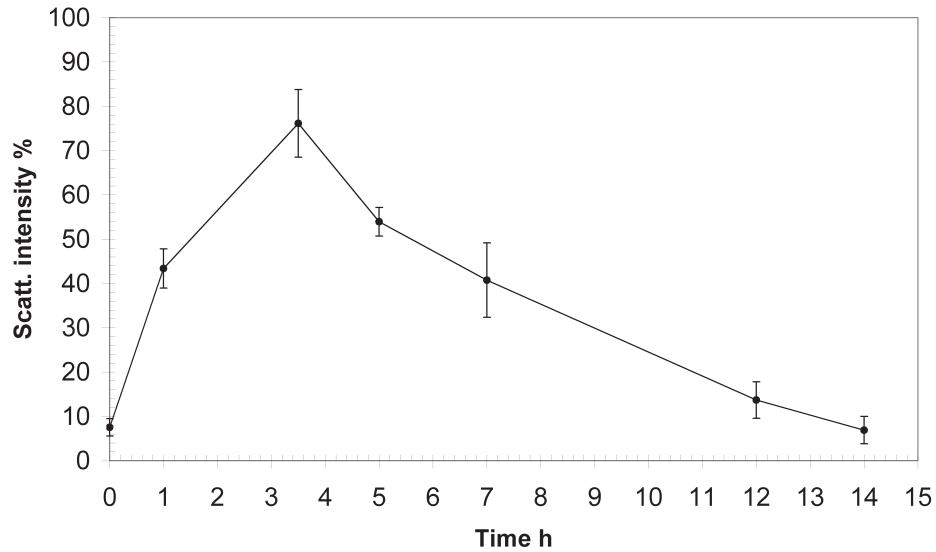


Figure 3. Dynamics of the accumulation of immune complexes in the blood of healthy young men after eating. x-axis, time after eating; y-axis, contribution to the scattering of the fraction of food ICs in %.

Table 1. Size of immune complexes and their contribution to the scattering in the examined donors before and 3.5 h after eating.

Donor	Before eating		3.5 h after eating	
	Size, nm	Contribution to scattering, %	Size, nm	Contribution to scattering, %
D10	109	8.5	122	78.6
A10	119	7.1	120	78.6
A05	109	2.6	121	78.1
B03	116	8.3	120	78.8
C04	127	4.1	123	79.8
B01	121	3.7	121	78.5
A18	123	6.9	122	79.3
FF	115	7.3	120	78.7
A12	118	8.5	122	78.3
C14	109	2.6	121	78.6
Mean	116.6	5.9	121.1	78.7
SD	6.0	2.4	0.95	0.5

Igs in the analysed ICs. According to the contribution to the scattering of these high-molecular-weight protein aggregates to the total contribution of all ICs, it is possible to determine the proportion of ICs containing Igs of this isotype^{30,32}.

Analysis of the isotopic composition of the Ig component of the CICs showed that before eating, IgG1 Igs are predominantly present in CICs of all of the examined donors. After 3.5 hours after ingestion, the isotopic composition of Igs in the

IC expands (Figure 4) along with the complexes of IgG1, the number increases to $33.1 \pm 1.6\%$ (mean \pm SD). (Figure 4B), an insignificant number of IgG3 complexes ($4.1 \pm 0.9\%$) appears (Figure 4C), and the content of IgA complexes becomes predominant ($42.0 \pm 0.8\%$) (Figure 4D).

The results of the isotopic composition of Igs of the blood ICs of all examined donors are presented in Table 2.

Thus, the process of digestion in humans is accompanied by the formation of the CICs, the level of which reaches a maximum value the blood after 3.5 h. Initially, ICs mainly contains the IgG1, then a set of Ig isotypes in the composition of food ICs becomes more diverse. After 3.5 h, a gradual decrease in the amount of food ICs in the blood begins, and 14 h after eating, their concentration drops to the values corresponding to the initial level (before eating).

Dataset 1. The raw light scattering data for the subjects at each time point, and for the starved and fed rats

<http://dx.doi.org/10.5256/f1000research.14406.d203311>

Discussion

We recorded a notable fact: numerous macromolecular structures that efficiently scatter light are formed in the plasma after eating. On the basis of the data presented herein, the bulk of high-molecular-weight aggregates of blood plasma, arising *de novo* during digestion, is formed by Igs of different isotypes and represents ICs (Figure 4). It is obvious that the appearance of ICs in the blood after ingestion should be accompanied by their subsequent removal through cellular macrophage activity, otherwise their permanent accumulation would be observed. We analysed the kinetic characteristics of complexation during digestion in 10 healthy men. All the examined donors had similar temporal characteristics of the appearance, accumulation and removal of food ICs from the bloodstream. The number of newly formed protein aggregates in the peripheral blood increased by more than 5 times fairly quickly, within about 1 h of eating. Later, within several hours, the level of the CICs gradually increased, reaching its maximum after 3.5 h, after which a smooth decrease in the concentration of food ICs begins. After 7-8 h from that moment, characterized by the highest concentration of CICs in the blood, their level returns to the initial state (Figure 3). Thus, the cycle of appearance and removal of food ICs in humans lasts approximately 12 h.

We also performed a series of experiments in rats using the DLS method. We compared the composition of the blood (specifically the presence of the CICs) of rats that were kept hungry for 3 days with similar indicators of fed animals. For these purposes, samples of blood from the portal vein and inferior vena cava of the liver of rats were analysed.

By analysing the blood from the portal vein, we get information about the composition of the blood before it passes through the liver filtration barriers. The results of our studies show that the digestive process in the rat is accompanied by the appearance of a large protein aggregates with an R_h of the order of 200–300 nm, in the blood taken from the portal vein of a satiated animal, which we identified as ICs (Figure 1). That is, in a satiated rat in the blood coming from the digestive tract to the liver, a substantial amount of the CICs are observed (Figure 1A). In the serum of the rats that were not fed for 3 days, taken from the portal vein, the CICs are practically absent (Figure 1C).

The lower vena cava collects the venous blood from most of the abdominal and pelvic organs, including the blood that has been filtered out by the liver. By comparing the blood from the portal vein of the liver and the inferior vena cava, we can comprehend the changes in the composition of the blood, due to the detoxification carried out by the liver. Virtually no changes in the composition of the blood samples of hungry rats before and after passage through the liver purification filters, were recorded. In this case, the contribution to the scattering of particles with an R_h , corresponding to the ICs, in a blood sample, taken from the portal vein of rats receiving a normal food ration, greatly exceeds the contribution to the scattering of particles of the same size in a blood sample taken from the inferior vena cava (Figure 2C and D). Thus, we can conclude that the ICs formed during the digestion in rats almost immediately enter the liver with the bloodstream, where they are completely utilized.

The obtained data show that the mechanisms of formation and removal of food ICs in humans and rodents are different. If in rats, food ICs are almost immediately filtered in the liver without circulating in the future with the blood flow through the body, then CIC level in the human blood rises within 3.5 h after eating, after which the blood cleaning of food ICs takes place for a fairly long time (7–8 h).

The formation of numerous ICs as a result of food intake in the blood plasma is quite unusual. Ideally, during the digestion, the products of complete effective splitting of organic substances should easily leave the body in the form of water-soluble low-molecular-weight fractions, without clogging or overloading the filtering and excretory systems. However, this is not the case in practice: macromolecular structures consisting of food fragments are found in peripheral blood. The free transition of large organic molecules and/or their blocks in unsplit form through the walls of the digestive tract (primarily the intestine) into the bloodstream is called transcytosis^{38–40}.

The causes and biological relevance of transcytosis during digestion are not clear. However, it is obvious that it induces a local immune response. The data on the growth of CICs in the human blood during the process of digestion presented herein indirectly confirm this. The digestive tract has a number of barrier functions that protect the body from pathogens that enter the human body from the external environment. Nonspecific barrier mechanisms include the antibacterial properties of saliva, bile and pancreatic juice, the proteolytic activity of secrets, intestinal motorics and the characteristic structure of the surface of the intestinal mucosa. This first line of defence against foreign microorganisms and toxic substances is supplemented by a specific immune defence system localized in the digestive tract, which constitutes an important part of the overall multi-component human immune system. The local immune system of the digestive tract provides two main functions: recognition and induction of tolerance to food antigens and a blocking effect on pathogens⁴¹. The joint coordinated actions of epithelial cells, immunoreactive mucosal cells, antibodies and synanthropic microbiota form an adaptive immune response⁴².

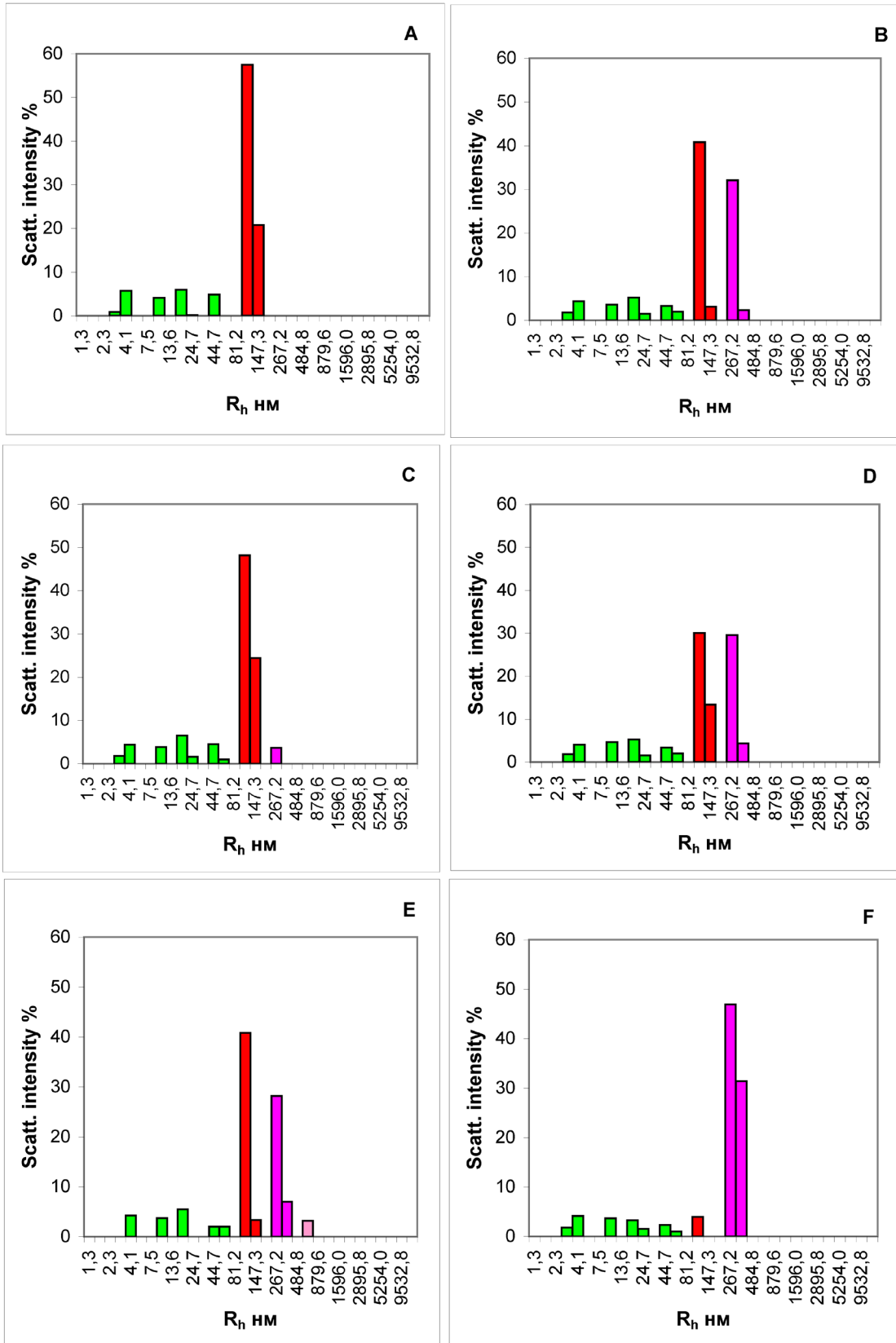


Figure 4. Isotypic composition of immunoglobulins of blood immune complexes (ICs) of a healthy donor 3.5 h after ingestion. **(A)** The total contribution of ICs. **(B)** The contribution of isotype IgG1 complexes. **(C)** The contribution of isotype IgG3 complexes. **(D)** The contribution of IgA complexes. **(E)** The contribution of complexes of IgG1 and IgG3. **(F)** The contribution of complexes of IgG1 and IgA. x-axis, the hydrodynamic radius of the particles in nm; y-axis, the contribution to the scattering in %.

Table 2. Isotypic composition of immunoglobulins from blood circulating immune complexes of the examined donors 3.5 h after eating.

Donor	IgG1		IgG3		IgA		IgG1+IgG3		IgG1+IgA	
	Size, nm	Contribution, %	Size, nm	Contribution, %	Size, nm	Contribution, %	Size, nm	Contribution, %	Size, nm	Contribution, %
D10	267.2	33.1	267.2	3.7	267.2	40.7	317.4	36.8	653.0	3.7
A10	267.2	32.4	267.2	3.9	267.2	41.4	311.0	36.3	653.0	3.1
A05	267.2	34.3	267.2	2.7	267.2	41.0	312.1	37.0	653.0	3.3
B03	262.0	33.9	247.3	5.1	267.2	42.1	304.0	39.1	653.0	2.7
C04	267.2	28.7	267.2	4.1	267.2	43.0	327.1	32.9	653.0	2.9
B01	287.1	33.2	252.5	4.6	267.2	42.3	323.3	37.9	653.0	2.7
A18	267.2	33.3	267.2	4.7	267.2	42.4	316.8	38.0	653.0	4.0
FF	267.2	34.0	267.2	3.3	267.2	42.1	325.8	37.3	653.0	3.0
A12	286.2	34.4	254.7	5.6	267.2	42.2	321.5	40.0	653.0	3.2
C14	282.4	33.3	247.2	3.6	267.2	42.4	303.0	36.8	653.0	3.5
Mean	271.6	33.1	260.5	4.1	267.2	42.0	316.2	37.2	653.0	3.2
SD	10.0	1.6	8.9	0.9	0.0	0.7	8.5	1.9	0.0	0.4

One of the important functions of the mucous membranes is the production of so-called secretory IgA (sIgA), the level of which is much higher in various parts of the gastrointestinal tract than those of other classes of Igs⁴³. sIgA participates in the protection of mucous surfaces from toxins, viruses and bacteria. The polymeric nature of sIgA provides significant advantages in the fight against foreign antigens: sIgA promotes the destruction of pathogens by proteolytic enzymes while remaining intact⁴⁴.

sIgA molecules are involved in protection against harmful micro-organisms and exogenous agents through a mechanism called immune exclusion⁴⁵. In addition, as a result of the interaction of sIgA with the cells of Peyer's patches, the intestinal transepithelial transfer of Igs from the intestinal lumen to the lymphoid tissues takes place in the intestines⁴⁶. Finally, in the IC, with antigens in the mucous membranes, sIgA causes a systemic reaction accompanied by inducing the production of anti-inflammatory cytokines and limiting the activation of dendritic cells⁴⁷. In terms of humoral immunity at mucosal surfaces, sIgA appears thus to combine properties of a neutralizing agent (immune exclusion) and of a mucosal immunostimulant inducing effector immune responses in a noninflammatory context favorable to preserve local homeostasis of the gastrointestinal tract^{48,49}.

Evaluation of the isotypic composition of the food ICs, in our opinion, will contribute to a better understanding of the molecular-cellular mechanisms that support the local immune system of the digestive tract. Analysis of the immunoglobulin component of the ICs showed that before eating, IgG1 was the predominant Ig present in the CICs of all examined donors.

During the process of digestion, the isotypic composition of immunoglobulins in the CICs expanded (Figure 4): the number of IgG1 complexes is substantially increased (Figure 4B) and a small number of complexes of IgG3 appear (Figure 4C). In this case, the content of IgA complexes becomes predominant (Figure 4D).

The phenomenon we observed with the help of the DLS method is likely to be a reflection of the features of the metabolic process in a person. This is accompanied by the entry into the blood of relatively large molecular structures, which are not completely digested in the oral cavity and the gastrointestinal path by digestive enzymes into monomers. By binding with the antibodies, they form ICs of considerable size. Basing on the presented results we arrive at the assumption that digestion in humans is accompanied by transcytosis from the intestine to the blood of not only individual molecules of Igs, vitamins, enzymes or large protein aggregates of incompletely digested food⁵⁰, but also ICs formed in the digestive tract as a result of activation of the local immune system (prevailing share of ICs with IgA in their structure) (Figure 4). Apparently, subsequent elimination of these food ICs from blood stream is performed by mononuclear phagocytes⁵¹. Presumably, in this case we are observing an alternative or additional mechanism of digestion that is activated under certain circumstances that are yet unknown.

Conclusions

The mechanisms of the formation and removal of food CICs in humans and rodents are different. In humans, the concentration of food ICs in the blood starts rising fast almost instantly after food intake. It reaches the maximum in approximately

3.5 h, being 7 times its initial level. The ICs concentration returns to the initial level after a further 7–8 h through a gradual decrease. In the process of digestion in humans, the isotopic composition of Igs in the food CICs changes and becomes more diverse with time after eating. The food ICs formed during the digestion in rats almost immediately enter the liver with the bloodstream, where they are completely utilized.

Data availability

Dataset 1. The raw light scattering data for the subjects

at each time point, and for the starved and fed rats. DOI: [10.5256/f1000research.14406.d203311⁵²](https://doi.org/10.5256/f1000research.14406.d20331152).

Competing interests

No competing interests were disclosed.

Grant information

The authors declared that no grants were involved in supporting this work.

Supplementary material

Supplementary File 1. Determination of particles size by means of the method of dynamic light scattering.

[Click here to access the data.](#)

References

- Ohyama K, Kuroda N: **Proteomic approaches to profiling the humoral immune response and identifying disease-associated antigens.** *Biol Pharm Bull.* 2012; **35**(9): 1409–1412. [PubMed Abstract](#) | [Publisher Full Text](#)
- Ohyama K, Kuroda N: **Immune complexome analysis.** *Adv Clin Chem.* 2013; **60**: 129–141. [PubMed Abstract](#) | [Publisher Full Text](#)
- Nezlin R: **A quantitative approach to the determination of antigen in immune complexes.** *J Immunol Methods.* 2000; **237**(1–2): 1–17. [PubMed Abstract](#) | [Publisher Full Text](#)
- Wener MH: **Tests for circulating immune complexes.** *Methods Mol Biol.* 2014; **1134**: 47–57. [PubMed Abstract](#) | [Publisher Full Text](#)
- Gołda R, Przybylski G, Józwicki W, *et al.*: **[Circulating immune complexes, heat shock proteins in the serum of smoking allergy sufferers—preliminary results].** *Przegl Lek.* 2012; **69**(10): 737–739. [PubMed Abstract](#)
- Manivel VA, Sohrabian A, Wick MC, *et al.*: **Anti-type II collagen immune complex-induced granulocyte reactivity is associated with joint erosions in RA patients with anti-collagen antibodies.** *Arthritis Res Ther.* 2015; **17**(1): 8. [PubMed Abstract](#) | [Publisher Full Text](#) | [Free Full Text](#)
- Mibei EK, Otieno WO, Orago AS, *et al.*: **Distinct pattern of class and subclass antibodies in immune complexes of children with cerebral malaria and severe malarial anaemia.** *Parasite Immunol.* 2008; **30**(6–7): 334–341. [PubMed Abstract](#) | [Publisher Full Text](#)
- Nityanand S, Holm G, Lefvert AK: **Immune complex mediated vasculitis in hepatitis B and C infections and the effect of antiviral therapy.** *Clin Immunol Immunopathol.* 1997; **82**(3): 250–257. [PubMed Abstract](#) | [Publisher Full Text](#)
- Novak J, Julian BA, Tomana M, *et al.*: **IgA glycosylation and IgA immune complexes in the pathogenesis of IgA Nephropathy.** *Semin Nephrol.* 2008; **28**(1): 78–87. [PubMed Abstract](#) | [Publisher Full Text](#) | [Free Full Text](#)
- Pandey MK: **Molecular basis for downregulation of C5a-mediated inflammation by IgG1 immune complexes in allergy and asthma.** *Curr Allergy Asthma Rep.* 2013; **13**(6): 596–606. [PubMed Abstract](#) | [Publisher Full Text](#)
- Parveen S, Taneja N, Bathi RJ, *et al.*: **Evaluation of circulating immune complexes and serum immunoglobulins in oral cancer patients—a follow up study.** *Indian J Dent Res.* 2010; **21**(1): 10–15. [PubMed Abstract](#) | [Publisher Full Text](#)
- Peng H, Wang W, Zhou M, *et al.*: **Role of interleukin-10 and interleukin-10 receptor in systemic lupus erythematosus.** *Clin Rheumatol.* 2013; **32**(9): 1255–1266. [PubMed Abstract](#) | [Publisher Full Text](#)
- Rai S, Mody RN: **Serum circulating immune complexes as prognostic indicators in premalignant and malignant lesions of oral cavity during and following radiotherapy.** *J Cancer Res Ther.* 2012; **8** Suppl 1: S116–122. [PubMed Abstract](#)
- Satoskar AA, Brodsky SV, Nadasdy G, *et al.*: **Discrepancies in glomerular and tubulointerstitial/vascular immune complex IgG subclasses in lupus nephritis.** *Lupus.* 2011; **20**(13): 1396–1403. [PubMed Abstract](#) | [Publisher Full Text](#)
- Papp K, Végh P, Hóbor R, *et al.*: **Immune complex signatures of patients with active and inactive SLE revealed by multiplex protein binding analysis on antigen microarrays.** *PLoS One.* 2012; **7**(9): e44824. [PubMed Abstract](#) | [Publisher Full Text](#) | [Free Full Text](#)
- Jarżab J, Rogala E: **[Circulating immune complexes in airborne allergy—a protective role?]** *Przegl Lek.* 1995; **52**(8): 375–81. [PubMed Abstract](#)
- Nahm DH, Park HS: **C3-containing IgE immune complexes in asthmatic patients.** *J Korean Med Sci.* 1996; **11**(3): 217–221. [PubMed Abstract](#) | [Publisher Full Text](#) | [Free Full Text](#)
- Rogala B, Glück J: **Allergen-specific IgE in circulating immune complexes in patients with inhalant allergy undergoing specific immunotherapy.** *J Investig Allergol Clin Immunol.* 1999; **9**(3): 183–189. [PubMed Abstract](#)
- Robinson WH, DiGennaro C, Huber W, *et al.*: **Autoantigen microarrays for multiplex characterization of autoantibody responses.** *Nat Med.* 2002; **8**(3): 295–301. [PubMed Abstract](#) | [Publisher Full Text](#)
- Rogala B, Jarżab J, Rymarczyk B, *et al.*: **[Allergen specific-IgG4 in circulating immune complexes in patients with inhalant allergy undergoing specific immunotherapy].** *Wiad Lek.* 2004; **57**(3–4): 123–30. [PubMed Abstract](#)
- Barratt J, Feehally J: **IgA nephropathy.** *J Am Soc Nephrol.* 2005; **16**(7): 2088–2097. [PubMed Abstract](#) | [Publisher Full Text](#)
- Njoku DB, Mellerson JL, Talor MV, *et al.*: **Role of CYP2E1 immunoglobulin G4 subclass antibodies and complement in pathogenesis of idiosyncratic drug-induced hepatitis.** *Clin Vaccine Immunol.* 2006; **13**(2): 258–265. [PubMed Abstract](#) | [Publisher Full Text](#) | [Free Full Text](#)
- Xiao Z, Visentin GP, Dayananda KM, *et al.*: **Immune complexes formed following the binding of anti-platelet factor 4 (CXCL4) antibodies to CXCL4 stimulate human neutrophil activation and cell adhesion.** *Blood.* 2008; **112**(4): 1091–1100. [PubMed Abstract](#) | [Publisher Full Text](#) | [Free Full Text](#)
- Ohyama K, Ueki Y, Kawakami A, *et al.*: **Immune complexome analysis of serum and its application in screening for immune complex antigens in rheumatoid arthritis.** *Clin Chem.* 2011; **57**(6): 905–9. [PubMed Abstract](#) | [Publisher Full Text](#)

25. Mayadas TN, Tsokos GC, Tsuboi N: **Mechanisms of immune complex-mediated neutrophil recruitment and tissue injury.** *Circulation.* 2009; **120**(20): 2012–2024. [PubMed Abstract](#) | [Publisher Full Text](#) | [Free Full Text](#)
26. Gauthier VJ, Abrass CK: **Circulating immune complexes in renal injury.** *Semin Nephrol.* 1992; **12**(5): 379–394. [PubMed Abstract](#)
27. Peng Y, Kowalewski R, Kim S, *et al.*: **The role of IgM antibodies in the recognition and clearance of apoptotic cells.** *Mol Immunol.* 2005; **42**(7): 781–787. [PubMed Abstract](#) | [Publisher Full Text](#)
28. Yasumori R, Hobby P, Williams G, *et al.*: **Charge distribution of plasma IgG and IgG immune complexes in IgA nephropathy.** *Nihon Jinzo Gakkai Shi.* 1994; **36**(11): 1282–1287. [PubMed Abstract](#) | [Publisher Full Text](#)
29. Landa SB, Filatov MV, Arutiunian AV, *et al.*: **[Study of plasma megamolecular complexation by laser correlation spectroscopy].** *Klin Lab Diagn.* 2008; **4**(4): 37–41. [PubMed Abstract](#)
30. Landa SB, Ivanov AV, Komlichenko EV, *et al.*: **Registration of isotype composition of immune complexes as a new diagnostic procedure.** *Pathogenesis.* 2015; **13**(4): 51–56.
31. Korabliov PV, Landa SB, Semionova EV, *et al.*: **Dynamic light scattering – a simple and sensitive method determination immune complexes in biological liquids.** *Biopreparation (Biopharmaceuticals).* 2015; **54**(2): 53–58.
32. Landa SB, Korabliov PV, Filatov MV: **Determination of immune complexis and their isotype composition in biological fluids by dynamic light scattering in response to the presentation of antigens.** In: *The materials of the XI international scientific-technical conference "Actual problems of biological physics and chemistry"*. Sevastopol, Russia, 2016; 163–167. [Reference Source](#)
33. Lebedev AD, Ivanova MA, Lomakin AV, *et al.*: **Heterodyne quasi-elastic light-scattering instrument for biomedical diagnostics.** *Appl Opt.* 1997; **36**(30): 7518–7522. [PubMed Abstract](#) | [Publisher Full Text](#)
34. Smoljanitskiy A: **Methods of studying the homeostasis system.** In: Menshikov VV (ed.) *Laboratory methods of research in the clinic.* Moscow: Medicine, 1987; 149–168.
35. Fournier B, Klier A: **Protein A gene expression is regulated by DNA supercoiling which is modified by the ArIS-ArIR two-component system of *Staphylococcus aureus*.** *Microbiology.* 2004; **150**(Pt 11): 3807–3819. [PubMed Abstract](#) | [Publisher Full Text](#)
36. Samoilovich MP, Pisareva MS, Klimovich BV, *et al.*: **Epitopes of IgA, sIgA and SC molecules detected with monoclonal antibodies (MA).** *Medical Immunology (Russia).* 2005; **7**(2–3): 280.
37. Samoylovich MP, Krutetskaya IYu, Klimovich VB, *et al.*: **Monoclonal antibodies to human IgG subclasses. Development and specificity determination.** *Immunologiya (Immunology) (Russia).* 1998; **3**: 27–30.
38. Mehta D, Malik AB: **Signaling mechanisms regulating endothelial permeability.** *Physiol Rev.* 2006; **86**(1): 279–367. [PubMed Abstract](#) | [Publisher Full Text](#)
39. Cai Q, Wang L, Deng G, *et al.*: **Systemic delivery to central nervous system by engineered PLGA nanoparticles.** *Am J Transl Res.* 2016; **8**(2): 749–764. [PubMed Abstract](#) | [Free Full Text](#)
40. Lundquist P, Artursson P: **Oral absorption of peptides and nanoparticles across the human intestine: Opportunities, limitations and studies in human tissues.** *Adv Drug Deliv Rev.* 2016; **106**(Pt B): 256–276. [PubMed Abstract](#) | [Publisher Full Text](#)
41. Berin MC: **Mucosal antibodies in the regulation of tolerance and allergy to foods.** *Semin Immunopathol.* 2012; **34**(5): 633–642. [PubMed Abstract](#) | [Publisher Full Text](#) | [Free Full Text](#)
42. Ogra PL, Mestecky J, Lamm ME, *et al.*: **Mucosal Immunology.** 2nd ed. San Diego: Academic Press, 1999. [Reference Source](#)
43. Woof JM, Mestecky J: **Mucosal immunoglobulins.** *Immunol Rev.* 2005; **206**: 64–82. [PubMed Abstract](#) | [Publisher Full Text](#)
44. Stubbe H, Berdoz J, Kraehenbuhl JP, *et al.*: **Polymeric IgA is superior to monomeric IgA and IgG carrying the same variable domain in preventing *Clostridium difficile* toxin A damaging of T84 monolayers.** *J Immunol.* 2000; **164**(4): 1952–1960. [PubMed Abstract](#) | [Publisher Full Text](#)
45. Nagler-Anderson C: **Man the barrier! Strategic defences in the intestinal mucosa.** *Nat Rev Immunol.* 2001; **1**(1): 59–67. [PubMed Abstract](#) | [Publisher Full Text](#)
46. Robinson JK, Blanchard TG, Levine AD, *et al.*: **A mucosal IgA-mediated excretory immune system *in vivo*.** *J Immunol.* 2001; **166**(6): 3688–3692. [PubMed Abstract](#) | [Publisher Full Text](#)
47. Corthésy B: **Roundtrip ticket for secretory IgA: role in mucosal homeostasis?** *J Immunol.* 2007; **178**(1): 27–32. [PubMed Abstract](#) | [Publisher Full Text](#)
48. Macpherson AJ, Hunziker L, McCoy K, *et al.*: **IgA responses in the intestinal mucosa against pathogenic and non-pathogenic microorganisms.** *Microbes Infect.* 2001; **3**(12): 1021–1035. [PubMed Abstract](#) | [Publisher Full Text](#)
49. Wu HY, Weiner HL: **Oral tolerance.** *Immunol Res.* 2003; **28**(3): 265–284. [PubMed Abstract](#) | [Publisher Full Text](#)
50. Tuma P, Hubbard AL: **Transcytosis: crossing cellular barriers.** *Physiol Rev.* 2003; **83**(3): 871–932. [PubMed Abstract](#) | [Publisher Full Text](#)
51. Shmagel KV, Chereshev VA: **Molecular bases of immune complex pathology.** *Biochemistry (Mosc).* 2009; **74**(5): 469–79. [PubMed Abstract](#) | [Publisher Full Text](#)
52. Landa SB, Korabliov PV, Semionova EV, *et al.*: **Dataset 1 in: Peculiarities of the formation and subsequent removal of the circulating immune complexes from the bloodstream during the process of digestion.** *F1000Research.* 2018. [Data Source](#)

Open Peer Review

Current Referee Status:



Version 1

Referee Report 20 July 2018

doi:10.5256/f1000research.15679.r35397



Vadim Govorun

Federal Research and Clinical Center of Physical-Chemical Medicine of Federal Medical Biological Agency (FRCC PCM), Moscow, Russian Federation

This manuscript 'Peculiarities of the formation and subsequent removal of the circulating immune complexes from the bloodstream during the process of digestion' by Sergej B. Landa *et al* describes the molecular–cellular mechanisms of the formation and utilization of food CICs in humans and rodents. Circulating immune complexes (CICs) are macromolecular structures formed as a result of the specific interaction of antigens with bivalent or multivalent antibodies in biological body fluid. Authors have developed a relatively simple method of determining the CICs, differentiated by the size and class of Igs, which makes it possible to study the structural and functional features of the organization of native ICs. They found the fact numerous macromolecular structures that efficiently scatter light are formed in the plasma after eating and the mechanisms of formation and removal of food ICs in humans and rodents are different. This manuscript provides a new information about special metabolic process in a person, which accompanied by the entry into the blood of relatively large molecular structures, which are not completely digested in the oral cavity and the gastrointestinal path by digestive enzymes into monomers.

I think, this is a very interesting work, and this manuscript is worthy of publication in your journal.

Is the work clearly and accurately presented and does it cite the current literature?

Yes

Is the study design appropriate and is the work technically sound?

Yes

Are sufficient details of methods and analysis provided to allow replication by others?

Yes

If applicable, is the statistical analysis and its interpretation appropriate?

Yes

Are all the source data underlying the results available to ensure full reproducibility?

Yes

Are the conclusions drawn adequately supported by the results?

Yes

Competing Interests: No competing interests were disclosed.

I have read this submission. I believe that I have an appropriate level of expertise to confirm that it is of an acceptable scientific standard.

Referee Report 10 July 2018

doi:10.5256/f1000research.15679.r35166



József Prechl 

R&D Laboratory, Diagnosticum zrt, Budapest, Hungary

The authors measure immunoglobulin containing complexes by dynamic light scattering and the relationship between dietary intake and the presence, amount and quality of these complexes. Experiments are carried out using rats and by obtaining blood from human volunteers. The stated aim of the study is the monitoring of quantity and quality of immune complexes following food intake.

Methodology

Protein A binds either poorly or not at all rat immunoglobulins, so it was not a good choice for the experiment. Therefore the fact that complexes with a hydrodynamic radius of 200-300 nm are removed from rat serum is only indirect and weak evidence that these complexes are immune complexes. Even if these complexes contain immunoglobulins the specific interactions between antibody and antigen should be proved in order to be called immune complexes.

Results

Figure 1A and Figure 2C are identical, redundancy could be reduced by merging these figures.

Protein A treatment seems to alter composition not only by removing large complexes but also by increasing the relative contribution to light scattering of 81-109 nm sized complexes. This is not addressed by the authors. Similar complexes are present in the IVC sample (Figure 2D) of fed versus fasted rats (Fig 2B).

How was the fraction of particles matching the ICs in human heparinized plasma determined? Figure 3 and Table 1 is based on the identification of this fraction, yet it is not defined under Methods.

Discussion

The first two paragraphs on page 11 provide a general overview of secreted IgA but the authors do not explain how that is related to their findings; in the present context it is not relevant and could be omitted.

In Table 2 it is not clear whether + sign means OR or AND; IgG1+IgG3 seems to refer to complexes containing either IgG1 OR IgG3, while IgG1+IgA seems to refer to double positive (IgG1 AND IgA) complexes. Figure 4B-D-F suggests that complexes contain exclusively either IgG1 or IgA, these isotype specific monoclonals reacting with roughly half-half of the complexes. This is very unusual for immune complexes where different isotypes against the same antigen are usually present at the same time.

Conclusions

The authors claim that the molecular and cellular "mechanisms of the formation and utilization of food immune complexes in humans and rodents do not match completely". The experimental and methodological approach was different in rodents and humans, therefore such a conclusion cannot be

reached. Kinetics was not followed in rats that were fed ad libitum, evidence is only indirect via the use of two sampling sites (vena portae, vena cava inferior) in contrast to temporal monitoring in humans. No cellular measurements were done at all, therefore conclusion on cellular mechanisms cannot be drawn.

Minor formal comment

Throughout the figures cyrillic "nm" is used for nanometer, please replace with latin nm.

The topic, how ingested food components are recognized by preformed immunoglobulins and how this recognitions affects food uptake and immunological tolerance and metabolism in general, is very timely and interesting. The article has several weak points though that need to be improved for solid and convincing results.

Is the work clearly and accurately presented and does it cite the current literature?

Partly

Is the study design appropriate and is the work technically sound?

Partly

Are sufficient details of methods and analysis provided to allow replication by others?

Yes

If applicable, is the statistical analysis and its interpretation appropriate?

Yes

Are all the source data underlying the results available to ensure full reproducibility?

No source data required

Are the conclusions drawn adequately supported by the results?

Partly

Competing Interests: No competing interests were disclosed.

I have read this submission. I believe that I have an appropriate level of expertise to confirm that it is of an acceptable scientific standard, however I have significant reservations, as outlined above.

Referee Report 03 July 2018

doi:[10.5256/f1000research.15679.r35398](https://doi.org/10.5256/f1000research.15679.r35398)



Boris A. Margulis

Institute of Cytology of Russian Academy of Science, Saint Petersburg, Russian Federation

The study of Landa and others aims to understand how food digestion process affects circulating immune complexes, CIC. Since the amount of immune complexes increases in biological fluids as the result of various disorders, including autoimmune diseases, viral and bacterial infections and malignancies, the appearance and precipitation of the particles need more careful investigation, particularly as applied to processes of normal physiology. The idea of the study was to measure the content of CICs after food

digestion, process believed to increase the particles' number in plasma. The authors employed the method of dynamic light scattering (DLS) to analyze the size of CIC particles, and the accuracy of this method was proved in studies of ICs from rats and humans after food ingestion. To identify Ig participating in CIC assembly Sepharose microspheres covered with Protein A were used, and both methods allowed to estimate the dynamics of CIC accumulation and lowering in blood. Using this combination of techniques the authors identified the fraction of particles with the size of 200-300 nm as food CIC. The authors stated that most of CIC in a process of digestion appear in blood from intestine and then they are quickly and completely utilized by the liver. In contrary, in humans the accumulation and removal of CICs from blood occurs more slowly than in rodents and takes approximately 12 hours. The cause of such delay is explained by authors by an incomplete digestion of larger molecular structures persisting in food. To define the spectra of Igs in CIC the authors used monoclonal antibodies generated in house. The changes in Ig classes during CIC utilization lasting 7-9 hours after ingestion were strong and it was found that instead of initial predominance of IgGs IgA become prevalent at the end of that period. This change may be hypothetically associated with the necessity of maintaining of immune system in activated state after food consumption. The study of Landa *et al* evokes several questions and one of the latter concerns the experimental approval of dependence of CIC content and composition on meal volume and/or composition. To conclude, the authors made a big work; they implemented a novel technique, DLS, for the analysis of immune complexes and obtained interesting results concerning particularly the long-living CIC in humans resulting from food consumption.

Is the work clearly and accurately presented and does it cite the current literature?

Yes

Is the study design appropriate and is the work technically sound?

Yes

Are sufficient details of methods and analysis provided to allow replication by others?

Yes

If applicable, is the statistical analysis and its interpretation appropriate?

Yes

Are all the source data underlying the results available to ensure full reproducibility?

Partly

Are the conclusions drawn adequately supported by the results?

Yes

Competing Interests: No competing interests were disclosed.

Referee Expertise: molecular biology

I have read this submission. I believe that I have an appropriate level of expertise to confirm that it is of an acceptable scientific standard.

The benefits of publishing with F1000Research:

- Your article is published within days, with no editorial bias
- You can publish traditional articles, null/negative results, case reports, data notes and more
- The peer review process is transparent and collaborative
- Your article is indexed in PubMed after passing peer review
- Dedicated customer support at every stage

For pre-submission enquiries, contact research@f1000.com

F1000Research