




Direct Whole-Genome Sequencing of Sputum Accurately Identifies Drug-Resistant *Mycobacterium tuberculosis* Faster than MGIT Culture Sequencing

 Ronan M. Doyle,^{a,b} Carrie Burgess,^a Rachel Williams,^a Rebecca Gorton,^c Helen Booth,^{d,e} James Brown,^{f,1} Josephine M. Bryant,^g Jackie Chan,^h Dean Creer,^f Jolyon Holdstock,^h Heinke Kunst,ⁱ Stefan Lozewicz,^j Gareth Platt,^c Erika Yara Romero,^a Graham Speight,^h Simon Tiberi,ⁱ Ibrahim Abubakar,^k Marc Lipman,^{f,1} Timothy D. McHugh,^c Judith Breuer^a

^aDivision of Infection and Immunity, University College London, London, United Kingdom

^bMicrobiology, Virology and Infection Control, Great Ormond Street Hospital NHS Foundation Trust, London, United Kingdom

^cCentre for Clinical Microbiology, Division of Infection and Immunity, Royal Free Campus, UCL, London, United Kingdom

^dUniversity College London Hospitals NHS Foundation Trust, London, United Kingdom

^eNorth Central London TB Service-South Hub, Whittington Hospital NHS Trust, London, United Kingdom

^fRoyal Free London NHS Foundation Trust, London, United Kingdom

^gMolecular Immunity Unit, MRC Laboratory of Molecular Biology, Department of Medicine, University of Cambridge, Cambridge, United Kingdom

^hOxford Gene Technology, Oxford Begbroke Science Park, Begbroke, Oxfordshire, United Kingdom

ⁱBlizard Institute, Barts and The London School of Medicine and Dentistry, Queen Mary University of London, London, United Kingdom

^jNorth Middlesex University Hospital NHS Trust, London, United Kingdom

^kUCL Institute for Global Health, University College London, London, United Kingdom

¹UCL Respiratory, Division of Medicine, University College London, London, United Kingdom

ABSTRACT The current methods available to diagnose antimicrobial-resistant *Mycobacterium tuberculosis* infections require a positive culture or only test a limited number of resistance-associated mutations. A rapid accurate identification of antimicrobial resistance enables the prompt initiation of effective treatment. Here, we determine the utility of whole-genome sequencing (WGS) of *M. tuberculosis* directly from routinely obtained diagnostic sputum samples to provide a comprehensive resistance profile compared to that from mycobacterial growth indicator tube (MGIT) WGS. We sequenced *M. tuberculosis* from 43 sputum samples by targeted DNA enrichment using the Agilent SureSelectXT kit, and 43 MGIT positive samples from each participant. Thirty two (74%) sputum samples and 43 (100%) MGIT samples generated whole genomes. The times to antimicrobial resistance profiles and concordance were compared with Xpert MTB/RIF and phenotypic resistance testing from cultures of the same samples. Antibiotic susceptibility could be predicted from WGS of sputum within 5 days of sample receipt and up to 24 days earlier than WGS from MGIT culture and up to 31 days earlier than phenotypic testing. Direct sputum results could be reduced to 3 days with faster hybridization and if only regions encoding drug resistance are sequenced. We show that direct sputum sequencing has the potential to provide comprehensive resistance detection significantly faster than MGIT whole-genome sequencing or phenotypic testing of resistance from cultures in a clinical setting. This improved turnaround time enables prompt appropriate treatment with associated patient and health service benefits. Improvements in sample preparation are necessary to ensure comparable sensitivities and complete resistance profile predictions in all cases.

Received 23 April 2018 Returned for modification 15 May 2018 Accepted 25 May 2018

Accepted manuscript posted online 30 May 2018

Citation Doyle RM, Burgess C, Williams R, Gorton R, Booth H, Brown J, Bryant JM, Chan J, Creer D, Holdstock J, Kunst H, Lozewicz S, Platt G, Romero EY, Speight G, Tiberi S, Abubakar I, Lipman M, McHugh TD, Breuer J. 2018. Direct whole-genome sequencing of sputum accurately identifies drug-resistant *Mycobacterium tuberculosis* faster than MGIT culture sequencing. *J Clin Microbiol* 56:e00666-18. <https://doi.org/10.1128/JCM.00666-18>.

Editor Alexander Mellmann, University Hospital Münster

Copyright © 2018 Doyle et al. This is an open-access article distributed under the terms of the [Creative Commons Attribution 4.0 International license](https://creativecommons.org/licenses/by/4.0/).

Address correspondence to Ronan M. Doyle, ronan.doyle@gosh.nhs.uk.

KEYWORDS *Mycobacterium tuberculosis*, whole-genome sequencing, pathogen DNA enrichment, antimicrobial resistance

Tuberculosis (TB) infection is a global emergency associated with an increasing burden of drug-resistant *Mycobacterium tuberculosis* complex infections (1). Phenotypic testing for antimicrobial resistance detection is slow, with results typically a month to 6 weeks after initial culture confirmation, leading to the potential for prolonged suboptimal antibiotic treatment. Molecular assays such as the Xpert MTB/RIF (Cepheid), MTBDRplus, and MTBDRsl (Hain Lifescience) can rapidly detect a limited number of first- and second-line drug resistance mutations (2). However, none are currently able to identify the full range of antibiotic resistance mutations needed for appropriately targeted therapy in people with multidrug-resistant (MDR) TB. Further, these assays recognize only a fixed number of target mutations, missing less common resistance mutations (3), while Xpert MTB/RIF can only detect DNA mutations and cannot predict amino acid changes, resulting in potential false positives (4).

Whole-genome sequencing (WGS) of *M. tuberculosis* enables a comprehensive identification of all known drug-resistant mutations for all classes of TB drugs and also can provide valuable contact tracing information (5). Recently, the sequencing of organisms cultured in mycobacterial growth indicator tubes (MGITs) has been shown to be both an accurate method for detecting first- and second-line resistance mutations across the genome and less expensive than present routine diagnostic workflows (6). Although it is being rolled out in England (7), it relies on bacterial culture, which can delay the time to result by several weeks.

We previously described a successful method for capturing *M. tuberculosis* DNA directly from sputum samples using biotinylated RNA baits (8). This protocol provides a possible faster alternative to sequencing *M. tuberculosis* whole genomes and could therefore offer a quicker diagnosis of antibiotic resistance, leading to tailored treatment regimens with less use of antimicrobials and associated toxicity, fewer days in the hospital, reduced cost, and improved outcomes.

Mixed-strain infections of *M. tuberculosis* are well documented (9) and may lead to poor treatment outcomes and the possible emergence of minority drug-resistant strains (10–12). Culture of *M. tuberculosis* is known to impact negatively the detection of mixtures and minority variant mutations (13), with short-term MGIT culture being particularly poor at identifying mixed infections (14).

The aims of this study were (i) to compare the utility of performing WGS directly from routinely obtained diagnostic sputum with that from MGIT samples taken from the same participant (time to diagnosis plus their ability to predict antimicrobial resistance [AMR]) and (ii) to identify mixed infections and minority populations within samples.

MATERIALS AND METHODS

Study recruitment. Individuals aged 16 years or older attending a TB service with suspected pulmonary TB at seven clinics in London, UK, were invited to take part in this study.

DNA extraction. DNA was extracted from 1-ml clinical samples and MGIT cultures using mechanical ribolysis and an automated DNA extraction workflow. Samples were centrifuged for 30 min at $16,200 \times g$, and the supernatant was discarded. For MGIT cultures only, a saline prewash method was utilized to reduce the human nucleic acid component of the sample (15). One milliliter of sterile saline was added to the pellet (0.9% [wt/vol]), and the pellet was resuspended and centrifuged for 15 min at maximal speed ($16,200 \times g$). The supernatant was discarded and the process was repeated. For sputum and MGIT cultures, approximately 50 μ l of glass beads (425 to 600 μ m) was added to each sample pellet, and ribolysis was performed on a FastPrep24 platform for 45 s at 6.4 m/s. Two hundred forty microliters of extraction buffer 2 and 10 μ l of proteinase K were added to each of the samples, which were vortexed and then incubated at 56°C for 10 min. DNA was extracted from samples lysates on the Diasorin IXT (Arrow) automated platform using DNA extraction cartridges eluting into 100 μ l.

Quantification of extracted *Mycobacterium tuberculosis* DNA. The Xpert MTB/RIF (Cepheid) assay was performed on sputum samples as per the manufacturer's instructions; the *M. tuberculosis* quantity was reported as either very low, low, medium, or high alongside threshold cycle (C_T) values. The Xpert MTB/RIF assay also reported rifampin resistance as "detected" or "not detected." Drug susceptibility testing was based on phenotypic cultures for first-line drugs on solid media using the resistance ratio

TABLE 1 Target genes/regions and reason for inclusion in the reduced *M. tuberculosis* bait set

Gene target and/or region	Region property
<i>gyrB/gyrA</i>	Fluoroquinolone resistance
<i>rpoB/rpoC</i>	Rifampin resistance
<i>rpsL</i>	Streptomycin resistance
<i>rrs</i>	Streptomycin, amikacin, and kanamycin resistance
<i>gidB</i>	Streptomycin resistance
<i>mabA-fabG1, inhA, and promoter</i>	Isoniazid and ethionamide resistance
<i>katG</i>	Isoniazid resistance
<i>kasA</i>	Isoniazid resistance
<i>aphC-oxyR</i>	Isoniazid resistance
<i>tlyA</i>	Capreomycin resistance
<i>pncA</i> and promoter	Pyrazinamide resistance
<i>eis</i> and promoter	Kanamycin resistance
<i>thyA</i>	PAS resistance
<i>embC</i>	Ethambutol resistance
<i>embB</i>	Ethambutol resistance
<i>ethA</i>	Ethionamide resistance
Direct repeat locus	Spoligotyping

method and was carried out by the National Mycobacterium Reference Service using their standard protocols. A second *M. tuberculosis*-specific quantitative PCR (qPCR) targeting the 16S rRNA gene (*rrs*) was utilized to quantify the *M. tuberculosis* DNA extracted from sputum samples and MGIT cultures. For MGIT culture extracts, a 1/1,000 dilution was prepared prior to qPCR analysis. qPCR was performed using forward primer 5'-GTGATCTGCCCTGCACCTC-3' and reverse primer 5'-ATCCCACACCGCTAAAGCG-3' with a TaqMan probe ROX-AGGACCACGGGATGCATGTCTTGT-BHQ2 (16). The *M. tuberculosis*-specific qPCR mixtures consisted of 12.5 μ l of Quantitect Multiplex NoROX mix (Qiagen), 0.2 μ M primers and probes, and 5 μ l template per reaction mixture in a total volume of 25 μ l. Reactions were performed in duplicates on a Rotor-gene 8000 platform. The PCR cycling conditions were as follows: 50°C for 30 min, 95°C for 15 min, and 40 cycles of 94°C for 45 s and 60°C for 45 s. Standards were prepared from commercially sourced *M. tuberculosis* genomic DNA (Vircell), reconstituted as directed by the manufacturer.

Sequencing library preparation and whole-genome sequencing. Total DNA was quantified in sputum and MGIT extracts using the Qubit high sensitivity DNA assay (Life Technologies). Carrier human genomic DNA (Promega) was added where needed to obtain a total of 200 ng of DNA input for library preparation. All DNA samples were sheared using a Covaris S2 ultrasonicator for 150 s (peak incident power [PIP], 175; duty factor, 5; 200 cycles per burst using frequency sweeping). Sputum samples were prepared using the SureSelectXT target enrichment system for the Illumina paired-end sequencing library protocol (Agilent Technologies). End repair, the 3' addition of adenosine, and the ligation of adapters were all carried out according to Agilent's protocol. Prior to hybridization, 12 cycles of precapture PCR were performed using primers provided in the SureSelectXT kit. Hybridization of *M. tuberculosis* DNA to the streptavidin-coated beads was carried out using an *M. tuberculosis*-specific bait set described previously (8). Briefly, 120-mer RNA baits were designed to provide nonredundant coverage of the entire length of the positive strand of the H37Rv reference genome; they were synthesized by Agilent Biotechnologies. The baits can be purchased from Agilent and the bait sequences are available upon request from the authors. Eighteen cycles of postcapture PCR were performed with indexing primers provided in the SureSelectXT kit. All Agilent-recommended quality control steps were carried out. To compare the effect of target enrichment on MGIT sequencing, the first 14 MGIT samples underwent library preparation using SureSelectXT, and all subsequent MGIT samples had DNA libraries prepared using the NEBNext Ultra II DNA Library Prep kit (NEB) as per the manufacturer's protocol. The resulting DNA libraries were run on either a MiSeq or NextSeq sequencer (Illumina) using either a V2 500-cycle or 500/550 Mid output 300-cycle kit, respectively.

Optimized sequencing method. Three samples were prepared using a SureSelectXT fast target enrichment system (Agilent Technologies) as per the manufacturer's protocol. A reduced bait set was designed to capture only genes associated with drug resistance, and information for spoligotyping was used in the hybridization step. The reduced set of 120-mer RNA baits was synthesized by Agilent Technologies in the same way as the full set, except that it only included baits that were complementary to the genes and regions in Table 1 of the H37Rv reference genome.

Bioinformatics analysis. Sequencing reads were trimmed for adapter content and quality using Trim Galore, keeping reads longer than 100 bp. Trimmed reads were deduplicated and mapped to the H37Rv (accession number [NC_000962](https://www.ncbi.nlm.nih.gov/nuccore/NC_000962)) reference genome using Bbmap, allowing only successfully mapped paired reads at the 99% equivalent minimum identity across the entire read and a maximum insert size of 500 bp. Duplicate mapped reads were removed using Picard tools, and variants against the reference genome were called with freebayes, keeping only variants with a minimum of 10 supporting reads, greater than 2% frequency, mapping quality greater than 20, and a base quality score greater than 30, with reads present on both the forward and reverse strands and on both the 5' and 3' ends of reads. Variants found in and within 100 bp of Pro-Glu (PE) and Pro-Pro-Glu (PPE) genes, mobile elements, and repeat regions were discarded. For resistance calling, single nucleotide variants (SNVs) were annotated

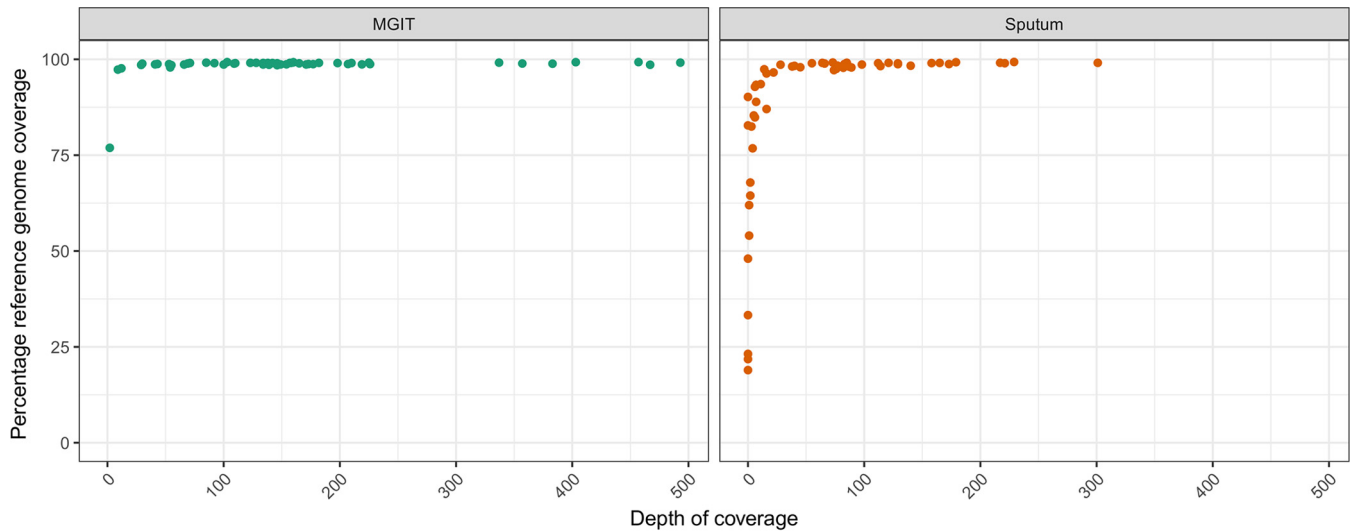


FIG 1 Comparison of the percentages of reference genomes with at least one sequence read covering a position on the y axis by the median depth of coverage on the x axis for each individual sample. This is stratified by whether original sample material was a sputum or MGIT culture.

using ANNOVAR (17). A maximum likelihood phylogeny was also inferred from 1,113 core genome SNVs present in 64 samples representing 32 participants using RAxML (v. 8.2.1) (18) with 99 bootstrap replicates. The SNV distance between pairs was calculated using R package seqinr. The same filtering conditions were also applied to the variants for the minor variant analysis. The number of reads across each variant position was normalized between pairs of samples from the same patient to adjust for the effect of read depth on variant frequency. Minor variants were filtered from the data set if found on reads with greater sequence identity to a different *M. tuberculosis* complex species. To further control possible contamination of paired samples with low frequency variants, MGIT and sputum samples from each pair were extracted on separate days, prepared in separate sequencing libraries, and sequenced on different runs.

Ethics approval and consent to participate. Samples were collected with informed consent from patients attending a TB clinic setting at the participating hospitals. Approval for the study was granted by the NRES Committee East Midlands–Nottingham 1 (REC reference 15/EM/0091). All samples were pseudoanonymized and allocated unique identification numbers.

Data availability. All sequence data associated with this study have been deposited in the European Nucleotide Archive under study accession number [PRJEB21685](https://www.ebi.ac.uk/ena/record/PRJEB21685).

RESULTS

Genomic coverage. Sixty-three participants were prospectively enrolled. Paired sputum and MGIT samples were sequenced from 43 patients. This is due to 10 participants not having an MGIT sample collected for sequencing, another eight samples being smear and Xpert MTB/RIF negative, and two where the volume of sputum was insufficient for DNA extraction. Samples sequenced from MGIT cultures had a higher reference genome coverage than those obtained directly from sputum (Fig. 1), and this was correlated to the increased *M. tuberculosis* DNA available from the former (see Fig. S1 in the supplemental material). The enrichment of MGIT culture samples using the *M. tuberculosis* probes also enhanced the quality and depth of the sequences (Fig. S1).

We next evaluated whether bacterial load, as measured by smear and Xpert MTB/RIF, could be used to predict the success of whole-genome sequencing. From 43 patients, 32 sputum samples (74.4%) and 43 MGIT samples (100%) generated whole genomes (>85% coverage against reference genome) (Fig. 2A). Sputum sequencing success was linked to estimated input pathogen copy number. We stratified participants into 16 with high (3+ smear result, Xpert MTB/RIF high), 18 with medium (2+ smear result, Xpert MTB/RIF medium), and 9 with low (scanty or 1+ smear result, Xpert MTB/RIF low) bacterial loads and found that 87.5% of sputum samples with high bacterial load samples generated complete genomes compared to 72.2% with medium and 55.5% with low bacterial loads (Fig. 2B and C). We were also able to recover partial

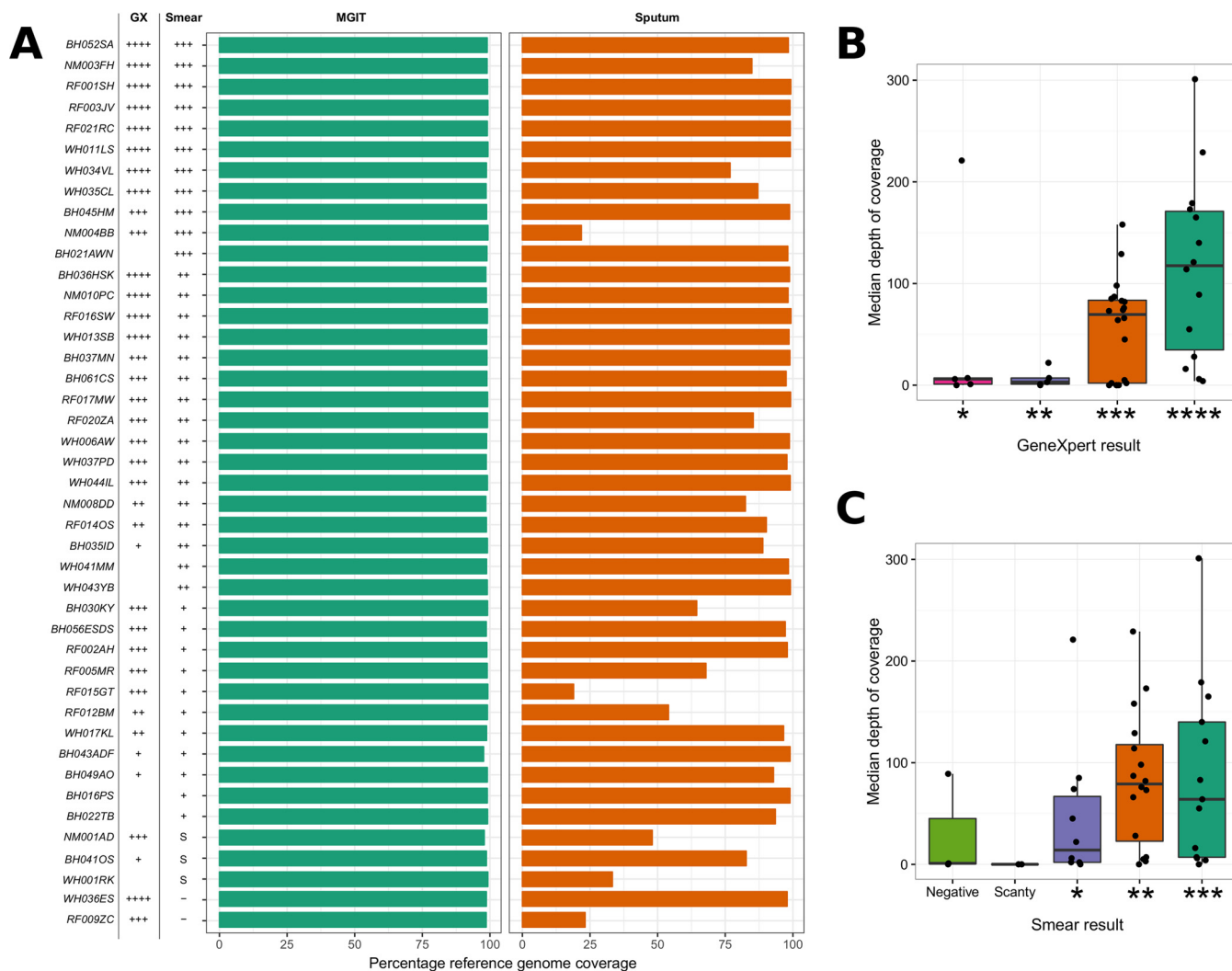


FIG 2 (A) Bar plot showing the percentages of reference genome coverage (a single read covering each genome position) for patients with both sputum and MGIT samples sequenced. The plot is annotated with both Xpert MTB/RIF (GX) and smear microscopy (Smear) results. For GX: ****, high; ***, medium; **, low; *, very low. For smear: ***, 3+; **, 2+; *, 1+; S, scanty; -, negative. Where a result is missing, the test was not carried out. Boxplots showing median depths of coverage for sputum samples stratified by both the quantitative Xpert MTB/RIF measures (B) and semiquantitative smear results (C).

genomes for two sputum samples that were reported as negative by smear microscopy but Xpert MTB/RIF positive.

MGIT and sputum sequence variation. A comparison of the 32 patients with both complete sputum and MGIT genomes available showed no unique consensus sequence variation between the pairs. The identity between sputum and MGIT consensus sequences is shown in a heat map (Fig. 3) and phylogenetic tree (see Fig. S2). Twenty-three MGIT and sputum pairs showed no SNV between them at the consensus level, while nine patients' sample pairs differed by one or two single nucleotides. In all nine patients, the consensus polymorphism was present as a minority variant in the matched sputum or MGIT sample (see Table S1).

Time to antibiotic resistance prediction. Allowing for sample batching, which was only carried out for study purposes, the direct sequencing of sputum using targeted enrichment reduced the time to antibiotic susceptibility prediction initially to 5 days, compared with a mean of 11 (standard deviation [SD], 6) days for MGIT sequencing (Fig. 4). This was reduced further by protocol optimization to 3 days when a reduced bait set was used that captures only the regions with putative resistance mutations (Table 1 and Fig. 4). Hybridization optimization also reduced the whole-genome protocol to 4 days (Fig. 4). The

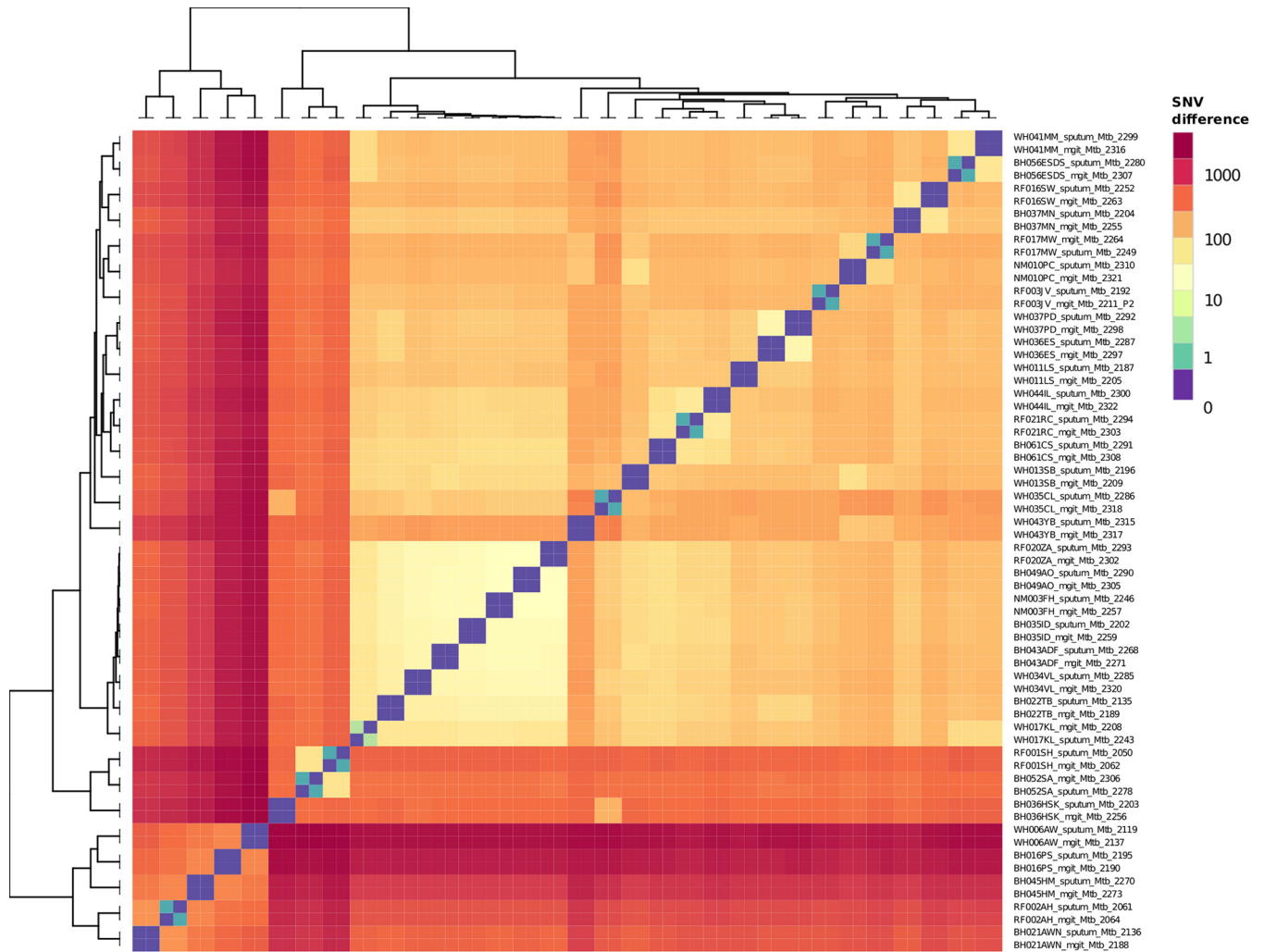


FIG 3 Heatmap clustering samples by the pairwise numbers of single nucleotide differences between them. Sample names are formatted such that the patient identifier is at the start followed by whether the sample originated from a MGIT culture or sputum.

reduced bait set targeted 35,960 bp of the H37Rv reference genome in total and successfully resequenced three MDR-TB samples (noted in Fig. 4.) from this study to a high average depth of coverage (>2,000×) over the captured regions. All eight genotypic resistant variants identified in the whole-genome sequencing data were also identified after resequencing with the reduced bait set (see Fig. S3). Overall, 36 sputum samples with complete genomes, including 77% of those with drug resistance mutations, would have been reported a mean of 9 days earlier than with MGIT sequencing and a mean of 35 days earlier than with phenotypic testing using the optimized 3-day protocol.

Antibiotic resistance concordance. We found complete concordance between resistance mutations identified in paired MGIT and sputum samples from nine participants when there was >85% single read coverage against the reference genome. Four participants missed resistance mutations where sputum sequencing read coverage was too low to make a reliable call (Table 2). Xpert MTB/RIF, sputum WGS, and MGIT WGS were concordant with phenotypic resistance testing in 21 of 23 resistance mutations identified (Table 2). The exceptions were where a variant in participant RF015GT predicting an amino acid change Ser428Iso in *rpoB* (H37Rv codon numbering; *Escherichia coli rpoB* numbering S509I) was reported as resistant by Xpert MTB/RIF, but the reference laboratory found it to be susceptible (Table 2). Previous publications have shown that not all SNVs at this position are associated with resistance (19–21). A fixed

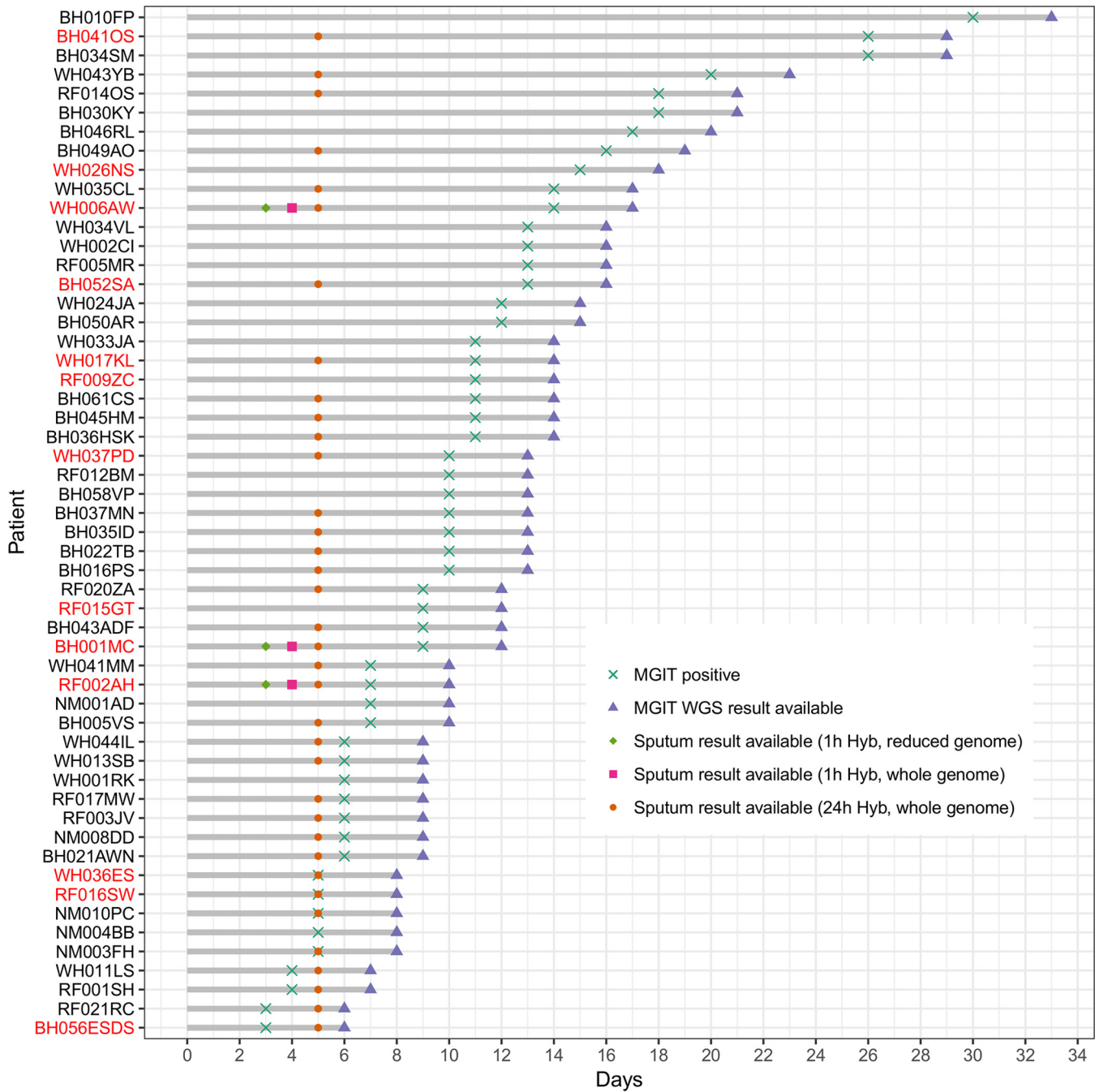


FIG 4 The time taken in days on the x axis from sample collection (day 0) to when the MGIT samples flag as positive and sequence results become available, as denoted by the gray bars. The time taken for a patient sputum result to become available is marked by three different identifiers depending on whether the sample underwent whole-genome sequencing or partial-genome sequencing and whether the 24-h or 1-h hybridization protocol was used. Sputum samples that failed sequencing are marked by missing symbols. Patient identifiers marked in red had confirmed drug-resistant TB infections.

mutation in *katG* predicting amino acid change Ser315Thr was confirmed to confer high levels of resistance to isoniazid in five samples, but patient BH052SA with the same mutation was found to be susceptible. This common polymorphism in *katG* has been previously been shown to confer consistently high levels of isoniazid resistance to *M. tuberculosis* (22–24). Whole-genome sequencing from both MGIT and sputum samples also identified streptomycin (three patients) and *p*-aminosalicylic acid ([PAS] four patients) resistance mutations, neither of which is routinely tested within the phenotypic assay in the United Kingdom.

TABLE 2 Antimicrobial resistance profiles from 13 patients with evidence of resistance from direct sputum sequencing using whole-genome bait set

Patient	Smear result	Rifampicin								Isoniazid						
		<i>rpoB</i> :c.C1333T:p.H445Y		<i>rpoB</i> :c.1333_1334TG		<i>rpoB</i> :c.C1349T:p.S450L		GeneXpert RIF resistance	Solid culture phenotype	<i>katG</i> :c.G944C:p.S315T		<i>fabG1</i> :c-8		<i>inhA</i> :c.T280G:p.S94A		Solid culture phenotype
		Sputum	MGIT	Sputum	MGIT	Sputum	MGIT			Sputum	MGIT	Sputum	MGIT	Sputum	MGIT	
BH001MC	+	S ^a	ND ^b	S	ND	S	ND	ND	S	S	ND	S	ND	S	ND	S
BH041OS	+	— ^c	S	—	S	—	R ^d	R	R	—	R	—	S	—	S	R
BH052SA	+++	S	S	S	S	S	S	S	S	R	R	S	S	S	S	S
BH056ESDS	+	S	S	S	S	S	S	S	S	S	S	S	S	S	S	S
RF002AH	+	S	S	S	S	S	S	ND	S	R	R	S	S	S	S	R
RF009ZC	Neg	—	S	—	S	—	S	S	S	—	R	—	S	—	S	R
RF015GT	+	—	S	—	S	—	S	R	S	—	S	—	S	—	S	S
RF016SW	++	S	S	S	S	S	S	S	S	R	R	S	S	S	S	R
WH006AW	++	R	R	S	S	S	S	R	R	S	S	R	R	R	R	R
WH017KL	+	S	S	S	S	S	S	S	S	S	S	S	S	S	S	R
WH026NS	Neg	ND	S	ND	S	ND	S	ND	S	ND	S	ND	S	ND	S	S
WH036ES	Neg	S	S	S	S	S	S	S	S	S	S	R	R	S	S	R
WH037PD	++	—	S	—	R	—	S	R	R	R	R	S	S	S	S	R

^aS, susceptible.^bND, sample or result not available.^c—, low sequence read coverage at position.^dR, resistant.

Mixed infections and minority variants. No mixed infections were detected. Using data normalized for read depth, from 32 matched sputa-MGIT samples, minor frequency variation was low, with only 88 minority biallelic sites meeting the quality criteria identified in all samples, representing 0.002% unique variable positions across the genomes. We undertook stringent procedures to exclude sequencing error, the presence of closely related *M. tuberculosis* complex species in sputum, contamination in and between sequencing runs, and lab contamination after sample collection as potential causes for the findings. None of the variant alleles were at positions known to be associated with antimicrobial resistance. In 41% (13) of cases, directly sequenced sputa had higher numbers of novel minority variants identified than the matched MGIT samples, compared to 19% (6) of MGIT samples with more minority variants in the sputum samples (see Fig. S4).

To control for the potential influence of the SureSelectXT step, we analyzed the proportions of minority variants shared between sputum and eight SureSelectXT enriched MGIT samples (40%), comparing between sputum and 16 nonenriched samples (38%), and found no statistically significant difference ($P = 0.854$). Overall, 37.2% of minority variants were concordant between sputum and MGIT samples, and the read frequencies with which they occurred were weakly correlated (see Fig. S5). This correlation was skewed by one patient (WH044IL), in whom both MGIT and sputum samples were more variable than other samples (Fig. S4) and in whom seven variants were at much higher frequencies in the MGIT than in sputum (at 30% to 45% versus ~5%, respectively) (Fig. S5 and S6). However, there was no evidence of mixed genotypes. The five synonymous minor variants and two nonsynonymous variants occurring in two genes of unknown function (Rv3529c and Rv3888c) were distributed across the genome and were not shared across any other pairs of samples.

DISCUSSION

We have shown that using target enrichment WGS methodology directly from diagnostic sputum samples generates resistance data, at most, up to 24 days earlier than MGIT culture WGS and up to 31 days faster than phenotypic testing of *Mycobacterium tuberculosis*. Sputum sequencing only achieved whole-genome sequences suitable for predicting resistance mutations in 32/43 (74%) samples, though this included a smear-negative sputum sample. Our demonstration that the quality of sequence data is strongly correlated with the input level of TB DNA (see Fig. S1 in the supplemental material) means that the success of sequencing can be predicted using semiquantita-

TABLE 2 (Continued)

Ethambutol					Pyrazinamide				Streptomycin					PAS		
<i>embB</i> :c.G1217A: p.G406D		<i>embB</i> :c.A1490G: p.Q497R		Solid culture phenotype	<i>pncA</i> :c.T11C: p.L4S		Solid culture phenotype	<i>rpsL</i> :c.A128G: p.K43R		<i>gid</i> :c.102delG: p.G34fs		Solid culture phenotype	<i>thyA</i> :c.A604G: p.T202A		Solid culture phenotype	
Sputum	MGIT	Sputum	MGIT		Sputum	MGIT		Sputum	MGIT	Sputum	MGIT		Sputum	MGIT		
S	ND	S	ND	S	ND	S	S	S	ND	S	ND	ND	R	ND	ND	
—	S	—	R	R	—	R	R	—	R	—	S	ND	—	S	ND	
S	S	S	S	S	S	S	S	S	S	S	S	ND	S	S	ND	
S	S	S	S	S	S	S	S	S	S	S	S	ND	R	R	ND	
S	S	S	S	S	S	S	S	S	S	S	S	ND	S	S	ND	
—	S	—	S	S	—	S	S	—	R	—	S	ND	—	S	ND	
—	S	—	S	S	—	S	S	—	S	—	S	ND	—	S	ND	
S	S	S	S	S	S	S	S	S	S	S	S	ND	S	S	ND	
R	R	S	S	S	S	S	S	S	S	R	—	ND	S	S	ND	
S	S	S	S	S	S	S	S	S	S	S	S	ND	R	R	ND	
ND	S	ND	S	S	ND	S	S	ND	S	ND	S	ND	ND	R	ND	
S	S	S	S	S	S	S	S	S	S	S	S	ND	S	S	ND	
S	S	S	S	S	S	S	S	S	S	S	S	ND	S	S	ND	

tive methods such as smear microscopy and Xpert MTB/RIF (Fig. 2), notwithstanding their variable performance (25).

Our data compare well with a recent report describing WGS of sputum where contaminating human DNA had been depleted (26). While this method achieved a slightly faster turnaround time on diagnostic samples (2 versus 5 days), it may be less susceptible than targeted enrichment, as only 60% (24/40) of smear-positive samples yielded sequence data suitable for resistance prediction. The study did not report bacterial load, and so a thorough comparison of sensitivity cannot be performed. The methods are, however, highly complementary, and combining the two would likely improve the genome copy input and increase direct WGS sensitivity. Our experience with enrichment methods (27, 28) also predicts that a redesign of the first-generation probe set would further improve the detection of resistance mutations.

Direct sequencing of sputum is currently slower than rapid methods such as the Xpert MTB/RIF and the Hain MTBDRplus and MTBDRsl assays for detecting resistance. However, there are major advantages to using WGS. First, unlike existing rapid methods, it can accurately identify the precise nucleotide change causing resistance. In our study, Xpert MTB/RIF reported resistance in a susceptible organism where there was a nucleotide change at position 428 in the *rpoB* gene not associated with resistance (19–21). Where discordant resistance results were found between molecular methods and the routine phenotypic testing, we could not repeat the phenotypic testing, as this was carried out historically by a centralized reference laboratory. Therefore, these discrepancies cannot be confirmed, and this represents a limitation of this type of study. Second, WGS, unlike rapid methods which target specific mutations, is able to detect resistance mutations for a wider range of second- and third-line drugs and also new drugs where current rapid tests would require costly redesign. This has already helped us to personalize treatment in a case of drug-resistant *M. tuberculosis* (29). Third, the data from direct WGS of sputum can report evolutionary relationships between samples (Fig. S2), providing the most detailed information on transmission dynamics available.

An important objective of our study was to evaluate the potential for direct sequencing from sputum to detect mixed *M. tuberculosis* infections, which are suboptimally identified by MGIT and solid culture (13, 14). Mixed infections are important in the pathology of TB, and the ability to detect resistance variants that are not at a consensus level, although not necessarily common (30), can affect antibiotic stewardship (31). Mixed infections and MDR-TB are more prevalent in countries with a much higher burden of TB than the United Kingdom and a greater prevalence of drug resistance, while high levels of HIV amplify the problem (32, 33). We were able to detect significantly more minority single nucleotide variants (SNVs) in sputum compared to the matched MGIT sequence (Fig. S5), despite the mostly clonal populations in this

study and the greater read depths achieved from MGIT sequencing. The origin of this heterogeneity remains unconfirmed, although we rigorously excluded contamination and methodological error. SNVs could be due to the presence in sputum of nontuberculous mycobacteria and other species which are known to have sequence homology with *M. tuberculosis* and may theoretically be detected by targeted enrichment. However, our use of highly stringent sequence mapping and the fact that the SNVs were detected across the genome and not concentrated in regions generally associated with cross hybridization suggest that they are real. In case WH044IL, seven SNVs present in sputum increased in frequency in the MGIT culture, possibly reflecting a selective growth advantage for this haplotype, particularly as one nonsynonymous SNV occurred in the Rv3888c gene, which has been shown to be essential for mycobacterial *in vitro* growth (34). This result confirms suggestions that diversity is lost and that culture-related selection of some variants can occur even during limited MGIT culture. Thus, MGIT culture may not be representative of the original sample and could potentially reduce the likelihood of identifying low-level resistance mutations and mixed infections that may act as a reservoir for resistance development.

The standard diagnostic workflows for *M. tuberculosis* are costly and time consuming. Ground breaking work within Public Health England has demonstrated that sequencing *M. tuberculosis* whole genomes from positive MGIT cultures is faster and less expensive (6), and where the sputum pathogen DNA concentration is low, early MGIT sequencing could still be the best possible workaround (15). Direct sequencing of *M. tuberculosis* from sputum has the potential to reduce the time to antimicrobial resistance detection within a clinically relevant time frame (26). We show here that its success is critically dependent on the input genome copies of pathogen DNA. While enrichment increases the cost of pathogen sequencing, this could be offset, as demonstrated in our study, by only enriching areas of interest on the genome. It is important to note that the infrastructure and expertise for rapid, high-throughput, targeted enrichment sequencing directly from clinical material of *M. tuberculosis* and other pathogens already exist in genomic centers where cancer and genetic disease sequencing uses this methodology. We believe, therefore, that effective scale-up and implementation of this rapid and accurate technology is relatively easy, once the technique has been optimized.

SUPPLEMENTAL MATERIAL

Supplemental material for this article may be found at <https://doi.org/10.1128/JCM.00666-18>.

SUPPLEMENTAL FILE 1, PDF file, 0.9 MB.

ACKNOWLEDGMENTS

We thank all participants who agreed to take part in this study. We also thank Lusha Kellgren, Maria McEwan, Narinder Boparai, Jacqui White, Neil Jones, Stephen Morris-Jones, Surjo De, and Trupti Patel for collecting samples at The Whittington Health NHS Trust, University College London Hospitals, and the TB Service North Central London, Nirmala Ghimire and Devan Vaghela for collecting samples at Bart's Health NHS Trust, and Josephine Silles, Pragna Patel, Marinos Christofi, Thomas Rendal, Yemi Martins, and Esmeralda Sicat for collecting samples at North Middlesex University Hospital.

This work was funded by the UCLH/UCL NIHR Biomedical Resource Centre (grant number BRC/176/III/JB/101350) and the PATHSEEK European Union's Seventh Programme for research, technological development and demonstration (grant number 304875).

We declare no competing interests.

REFERENCES

1. WHO. 2017. Global tuberculosis report 2017. WHO, Geneva, Switzerland. <http://apps.who.int/iris/bitstream/handle/10665/259366/9789241565516-eng.pdf?sequence=1>.
2. Scott LE, McCarthy K, Gous N, Nduna M, Van Rie A, Sanne I, Venter WF, Duse A, Stevens W. 2011. Comparison of Xpert MTB/RIF with other nucleic acid technologies for diagnosing pulmonary tuberculosis in a high HIV Prevalence setting: a prospective study. *PLoS Med* 8:e1001061. <https://doi.org/10.1371/journal.pmed.1001061>.

3. Jenkins C, Claxton AP, Shorten RJ, McHugh TD, Gillespie SH. 2005. Rifampicin Resistance in Tuberculosis Outbreak, London, England. *Emerg Infect Dis* 11:931–934. <https://doi.org/10.3201/eid1106.041262>.
4. Ocheretina O, Byrt E, Mabou M-M, Royal-Mardi G, Merveille Y-M, Rouzier V, Fitzgerald DW, Pape JW. 2016. False-positive rifampin resistant results with Xpert MTB/RIF version 4 assay in clinical samples with a low bacterial load. *Diagn Microbiol Infect Dis* 85:53–55. <https://doi.org/10.1016/j.diagmicrobio.2016.01.009>.
5. Witney AA, Gould KA, Arnold A, Coleman D, Delgado R, Dhillon J, Pond MJ, Pope CF, Planche TD, Stoker NG, Cosgrove CA, Butcher PD, Harrison TS, Hinds J. 2015. Clinical application of whole-genome sequencing to inform treatment for multidrug-resistant tuberculosis cases. *J Clin Microbiol* 53:1473–1483. <https://doi.org/10.1128/JCM.02993-14>.
6. Pankhurst LJ, del Ojo Elias C, Votintseva AA, Walker TM, Cole K, Davies J, Fermont JM, Gascoyne-Binzi DM, Kohl TA, Kong C, Lemaitre N, Niemann S, Paul J, Rogers TR, Roycroft E, Smith EG, Supply P, Tang P, Wilcox MH, Wordworth S, Wyllie D, Xu L, Crook DW, COMPASS-TB Study Group. 2016. Rapid, comprehensive, and affordable mycobacterial diagnosis with whole-genome sequencing: a prospective study. *Lancet Respir Med* 4:49–58. [https://doi.org/10.1016/S2213-2600\(15\)00466-X](https://doi.org/10.1016/S2213-2600(15)00466-X).
7. Walker TM, Cruz ALG, Peto TE, Smith EG, Esmail H, Crook DW. 2017. Tuberculosis is changing. *Lancet Infect Dis* 17:359–361. [https://doi.org/10.1016/S1473-3099\(17\)30123-8](https://doi.org/10.1016/S1473-3099(17)30123-8).
8. Brown AC, Bryant JM, Einer-Jensen K, Holdstock J, Houniet DT, Chan JZM, Depledge DP, Nikolayevskiy V, Broda A, Stone MJ, Christiansen MT, Williams R, McAndrew MB, Tutill H, Brown J, Melzer M, Rosmarin C, McHugh TD, Shorten RJ, Drobniowski F, Speight G, Breuer J. 2015. Rapid whole-genome sequencing of *Mycobacterium tuberculosis* isolates directly from clinical samples. *J Clin Microbiol* 53:2230–2237. <https://doi.org/10.1128/JCM.00486-15>.
9. Cohen T, van Helden PD, Wilson D, Colijn C, McLaughlin MM, Abubakar I, Warren RM. 2012. Mixed-strain *Mycobacterium tuberculosis* infections and the implications for tuberculosis treatment and control. *Clin Microbiol Rev* 25:708–719. <https://doi.org/10.1128/CMR.00021-12>.
10. van Rie A, Victor TC, Richardson M, Johnson R, van der Spuy GD, Murray EJ, Beyers N, Gey van Pittius NC, van Helden PD, Warren RM. 2005. Reinfection and mixed infection cause changing *Mycobacterium tuberculosis* drug-resistance patterns. *Am J Respir Crit Care Med* 172:636–642. <https://doi.org/10.1164/rccm.200503-449OC>.
11. Baldeviano-Vidalón GC, Quispe-Torres N, Bonilla-Asalde C, Gastiaturú-Rodríguez D, Pro-Cuba JE, Llanos-Zavalaga F. 2005. Multiple infection with resistant and sensitive *M. tuberculosis* strains during treatment of pulmonary tuberculosis patients. *Int J Tuberc Lung Dis* 9:1155–1160.
12. Zetola NM, Shin SS, Tumedi KA, Moeti K, Ncube R, Nicol M, Collman RG, Klausner JD, Modongo C. 2014. Mixed *Mycobacterium tuberculosis* complex infections and false-negative results for rifampin resistance by GeneXpert MTB/RIF are associated with poor clinical outcomes. *J Clin Microbiol* 52:2422–2429. <https://doi.org/10.1128/JCM.02489-13>.
13. Martín A, Herranz M, Ruiz Serrano MJ, Bouza E, García de Viedma D. 2010. The clonal composition of *Mycobacterium tuberculosis* in clinical specimens could be modified by culture. *Tuberculosis (Edinb)* 90: 201–207. <https://doi.org/10.1016/j.tube.2010.03.012>.
14. Hanekom M, Streicher EM, Van de Berg D, Cox H, McDermid C, Bosman M, Gey van Pittius NC, Victor TC, Kidd M, van Soolingen D, van Helden PD, Warren RM. 2013. Population structure of mixed *Mycobacterium tuberculosis* infection is strain genotype and culture medium dependent. *PLoS One* 8:e70178. <https://doi.org/10.1371/journal.pone.0070178>.
15. Votintseva AA, Pankhurst LJ, Anson LW, Morgan MR, Gascoyne-Binzi D, Walker TM, Quan TP, Wyllie DH, Del Ojo Elias C, Wilcox M, Walker AS, Peto TEA, Crook DW. 2015. Mycobacterial DNA extraction for whole-genome sequencing from early positive liquid (MGIT) cultures. *J Clin Microbiol* 53:1137–1143. <https://doi.org/10.1128/JCM.03073-14>.
16. Honeyborne I, McHugh TD, Phillips PPJ, Bannoo S, Bateson A, Carroll N, Perrin FM, Ronacher K, Wright L, van Helden PD, Walz G, Gillespie SH. 2011. Molecular bacterial load assay, a culture-free biomarker for rapid and accurate quantification of sputum *Mycobacterium tuberculosis* bacillary load during treatment. *J Clin Microbiol* 49:3905–3911. <https://doi.org/10.1128/JCM.00547-11>.
17. Yang H, Wang K. 2015. Genomic variant annotation and prioritization with ANNOVAR and wANNOVAR. *Nat Protoc* 10:1556–1566. <https://doi.org/10.1038/nprot.2015.105>.
18. Stamatakis A. 2014. RAxML version 8: a tool for phylogenetic analysis and post-analysis of large phylogenies. *Bioinformatics* 30:1312–1313. <https://doi.org/10.1093/bioinformatics/btu033>.
19. Williams DL, Waguespack C, Eisenach K, Crawford JT, Portaels F, Salfinger M, Nolan CM, Abe C, Sticht-Groh V, Gillis TP. 1994. Characterization of rifampin-resistance in pathogenic mycobacteria. *Antimicrob Agents Chemother* 38:2380–2386. <https://doi.org/10.1128/AAC.38.10.2380>.
20. Sekiguchi J, Miyoshi-Akiyama T, Augustynowicz-Kopec E, Zwolska Z, Kirikae F, Toyota E, Kobayashi I, Morita K, Kudo K, Kato S, Kuratsuji T, Mori T, Kirikae T. 2007. Detection of multidrug resistance in *Mycobacterium tuberculosis*. *J Clin Microbiol* 45:179–192. <https://doi.org/10.1128/JCM.00750-06>.
21. Zenteno-Cuevas R, Zenteno JC, Cuellar A, Cuevas B, Sampieri CL, Riviera JE, Parissi A. 2009. Mutations in *rpoB* and *katG* genes in *Mycobacterium* isolates from the Southeast of Mexico. *Mem Inst Oswaldo Cruz* 104: 468–472. <https://doi.org/10.1590/S0074-02762009000300012>.
22. Wengenack NL, Uhl JR, St Amand AL, Tomlinson AJ, Benson LM, Naylor S, Kline BC, Cockerill FR, Rusnak F. 1997. Recombinant *Mycobacterium tuberculosis* KatG(S315T) is a competent catalase-peroxidase with reduced activity toward isoniazid. *J Infect Dis* 176:722–727. <https://doi.org/10.1086/514096>.
23. Saint-Joanis B, Souchon H, Wilming M, Johnsson K, Alzari PM, Cole ST. 1999. Use of site-directed mutagenesis to probe the structure, function and isoniazid activation of the catalase/peroxidase, KatG, from *Mycobacterium tuberculosis*. *Biochem J* 338(Pt 3):753–760.
24. Pym AS, Saint-Joanis B, Cole ST. 2002. Effect of *katG* mutations on the virulence of *Mycobacterium tuberculosis* and the implication for transmission in humans. *Infect Immun* 70:4955–4960. <https://doi.org/10.1128/IAI.70.9.4955-4960.2002>.
25. Devonshire AS, O'Sullivan DM, Honeyborne I, Jones G, Karczmarczyk M, Pavšič J, Gutteridge A, Milavec M, Mendoza P, Schimmel H, Van Heuverswyn F, Gorton R, Cirillo DM, Borroni E, Harris K, Barnard M, Heydenrych A, Nduisilo N, Wallis CL, Pillay K, Barry T, Reddington K, Richter E, Mozioglu E, Akyurek S, Yalçinkaya B, Akgoz M, Žel J, Foy CA, McHugh TD, Huggett JF. 2016. The use of digital PCR to improve the application of quantitative molecular diagnostic methods for tuberculosis. *BMC Infect Dis* 16:366. <https://doi.org/10.1186/s12879-016-1696-7>.
26. Votintseva AA, Bradley P, Pankhurst L, Del Ojo Elias C, Loose M, Nilgiriwala K, Chatterjee A, Smith EG, Sanderson N, Walker TM, Morgan MR, Wyllie DH, Walker AS, Peto TEA, Crook DW, Iqbal Z. 2017. Same-day diagnostic and surveillance data for tuberculosis via whole genome sequencing of direct respiratory samples. *J Clin Microbiol* 55:1285–1298. <https://doi.org/10.1128/JCM.02483-16>.
27. Depledge DP, Palser AL, Watson SJ, Lai IY-C, Gray ER, Grant P, Kanda RK, Leproust E, Kellam P, Breuer J. 2011. Specific capture and whole-genome sequencing of viruses from clinical samples. *PLoS One* 6:e27805. <https://doi.org/10.1371/journal.pone.0027805>.
28. Christiansen MT, Brown AC, Kundu S, Tutill HJ, Williams R, Brown JR, Holdstock J, Holland MJ, Stevenson S, Dave J, Tong CYW, Einer-Jensen K, Depledge DP, Breuer J. 2014. Whole-genome enrichment and sequencing of *Chlamydia trachomatis* directly from clinical samples. *BMC Infect Dis* 14:591. <https://doi.org/10.1186/s12879-014-0591-3>.
29. Nimmo C, Doyle R, Burgess C, Williams R, Gorton R, McHugh TD, Brown M, Morris-Jones S, Booth H, Breuer J. 2017. Rapid identification of a *Mycobacterium tuberculosis* full genetic drug resistance profile through whole genome sequencing directly from sputum. *Int J Infect Dis* 62: 44–46. <https://doi.org/10.1016/j.ijid.2017.07.007>.
30. Witney AA, Bateson ALE, Jindani A, Phillips PPJ, Coleman D, Stoker NG, Butcher PD, McHugh TD, RIFAQUIN Study Team. 2017. Use of whole-genome sequencing to distinguish relapse from reinfection in a completed tuberculosis clinical trial. *BMC Med* 15:71. <https://doi.org/10.1186/s12916-017-0834-4>.
31. Cohen T, Chindelevitch L, Misra R, Kempner ME, Galea J, Moodley P, Wilson D. 2016. Within-host heterogeneity of *Mycobacterium tuberculosis* infection is associated with poor early treatment response: a prospective cohort study. *J Infect Dis* 213:1796–1799. <https://doi.org/10.1093/infdis/jiw014>.
32. Bifani PJ, Mathema B, Kurepina NE, Kreiswirth BN. 2002. Global dissemination of the *Mycobacterium tuberculosis* W-Beijing family strains. *Trends Microbiol* 10:45–52. [https://doi.org/10.1016/S0966-842X\(01\)02277-6](https://doi.org/10.1016/S0966-842X(01)02277-6).
33. Eldholm V, Rieux A, Monteserin J, Lopez JM, Palmero D, Lopez B, Ritacco V, Dielot X, Balloux F. 2016. Impact of HIV co-infection on the evolution and transmission of multidrug-resistant tuberculosis. *Elife* 5:e16644. <https://doi.org/10.7554/eLife.16644>.
34. Griffin JE, Gawronski JD, DeJesus MA, Ioerger TR, Akerley BJ, Sasseti CM. 2011. High-resolution phenotypic profiling defines genes essential for mycobacterial growth and cholesterol catabolism. *PLoS Pathog* 7:e1002251. <https://doi.org/10.1371/journal.ppat.1002251>.