

ADAMTS-12 metalloprotease is necessary for normal inflammatory response.

Angela Moncada-Pazos, Alvaro J. Obaya, María Llamazares, Ritva Heljasvaara, María F. Suárez, Enrique Colado, Agnès Noël, Santiago Cal, and Carlos López-Otín

PAGE 39559:

Fig. 3C did not indicate the borders between different sections of the same gel for the calprotectin, S100A8, and S100A9 immunoblots from day 8. The actin immunoblots were electrophoresed on parallel gels. This error has now been corrected and does not affect the results or conclusions of this work.

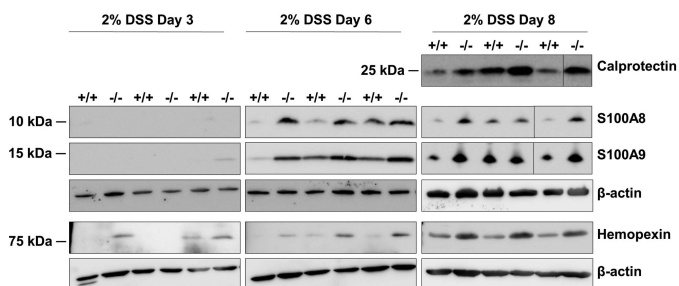


Fig. 3C