

The use of a standardized order set reduces systemic corticosteroid dose and length of stay for individuals hospitalized with acute exacerbations of COPD: a cohort study

Swati Gulati¹⁻³
Aline N Zouk¹⁻³
Jonathan P Kalehoff⁴
Christopher S Wren⁵
Peter N Davison⁶
Denay Porter Kirkpatrick¹⁻³
Surya P Bhatt¹⁻³
Mark T Dransfield^{1-3,7}
James Michael Wells^{1-3,7}

¹Department of Medicine, University of Alabama at Birmingham (UAB), Birmingham, AL, USA; ²Division of Pulmonary, Allergy, and Critical Care Medicine, University of Alabama at Birmingham (UAB), Birmingham, AL, USA; ³UAB Lung Health Center, Birmingham, AL, USA; ⁴Division of Internal Medicine, University of Alabama at Birmingham (UAB), Birmingham, AL, USA; ⁵Harrison School of Pharmacy, Auburn University, Auburn, AL, USA; ⁶University of Alabama at Birmingham School of Medicine, Birmingham, AL, USA; ⁷Birmingham VA Medical Center, Birmingham, AL, USA

Correspondence: James Michael Wells
1900 University Blvd, THH 422
University of Alabama at Birmingham
(UAB) Birmingham, AL 35294, USA
Email jmwells@uabmc.edu

Background: Systemic corticosteroids (SC) are an integral part of managing acute exacerbations of COPD (AECOPD). However, the optimal dose and duration vary widely in clinical practice. We hypothesized that the use of a “PowerPlan” order set in the electronic health system (EHS) that includes a 5-day SC order would be associated with a reduced steroid dose and length of stay (LOS) for individuals hospitalized with AECOPD.

Patients and methods: We conducted a retrospective cohort study of Medicare recipients discharged with an AECOPD diagnosis from our University Hospital from 2014 to 2016. Our EHS-based “COPD PowerPlan” order set included admission, laboratory, pharmacy, and radiology orders for managing AECOPD. The default SC option included intravenous methylprednisolone for 24 hours followed by oral prednisone for 4 days. The primary endpoint was the difference in cumulative steroid dose between the PowerPlan and the usual care group. Secondary endpoints included hospital LOS and readmission rates.

Results: The 250 patients included for analysis were 62±11 years old, 58% male, with an FEV₁ 55.1%±23.6% predicted. The PowerPlan was used in 72 (29%) patients. Cumulative steroid use was decreased by 31% in the PowerPlan group (420±224 vs 611±462 mg, *P*<0.001) when compared with usual care. PowerPlan use was independently associated with decreased LOS (3 days; IQR 2–4 days vs 4 days; IQR 3–6 days, *P*=0.022) without affecting 30- and 90-day readmission rates.

Conclusion: Use of a standardized EHS-based order set to manage AECOPD was associated with a reduction in steroid dose and hospital LOS.

Keywords: COPD exacerbation, treatment, corticosteroid, electronic order set

Introduction

COPD is a chronic and progressive disease, often punctuated by events of disease exacerbation. Acute exacerbations of COPD (AECOPD) are defined as an acute and sustained worsening beyond the normal day-to-day variation of the individual’s condition from a stable state and often warrants additional treatment.^{1,2} Admissions for AECOPD have an estimated in-patient mortality of 10%, and 4-year mortality can be as high as 45%.³ AECOPD hospitalizations are also a major driver of COPD-related health care cost.^{1,4} Systemic corticosteroids (SC) use is an important component of treating severe exacerbations. SC provide symptomatic benefit, reduce exacerbation duration and hospital stay, and accelerate recovery in forced expiratory volume in one second (FEV₁).⁵⁻⁷ However, the amount and duration of SC for treating an exacerbation vary

widely across clinical practice. Prolonged steroid courses are associated with significant side effects such as muscle weakness, development of diabetes, loss of bone mineral density, and it is an independent risk factor for mortality.^{8–10} Given the adverse effect profile and high incidence of AECOPD, SC overuse should be minimized. The most updated GOLD (Global Initiative for Chronic Obstructive Lung Disease) guidelines now recommend a 5-day course of steroid for inpatient management of exacerbations based largely on results of the REDUCE trial.^{11,12}

Despite the updated GOLD recommendation of 5-day course of SC, implementation into clinical practice has not been widely adopted. Electronic health system (EHS)-based preformatted order sets have been shown to be a tool to improve adherence to clinical guidelines and recommendations as well as to improve the daily workflow for providers. Prior studies have shown that order sets can be useful in patient assessment, guideline adherence, and standardization of treatment plans, which have resulted in improved clinical outcomes including benefits in hospital length of stay (LOS).^{13–15} However, many of these studies did not employ a short course of corticosteroids as recommended by GOLD, and there are limited data demonstrating the effectiveness of such an order set in a real-world setting.

We hypothesized that implementing a standardized EHS-based order set, termed the “COPD PowerPlan” would be associated with a lower total amount of SC used and LOS without impacting risk of future AECOPD.

Patients and methods

Study design and patients

This was a retrospective cohort study of Medicare recipients who were discharged with a diagnosis of AECOPD from

the University Hospital between January 1, 2014, and December 31, 2016. An AECOPD was defined by diagnosis related codes 190, 191, and 192 as the primary discharge diagnosis. Patients were excluded if they were admitted or transferred to the intensive care unit as the COPD PowerPlan was designed primarily to be used in nonintensive inpatient care units (Figure 1). The study was approved by the University of Alabama at Birmingham (UAB) Institutional Review Board (IRB) (approval number: X121221005). Informed consent was waived because this study involved chart review only and the IRB determined that the research involved no more than minimal risk to the subjects, the research could not practicably be carried out without the waiver of informed consent, and the waiver will not adversely affect the rights and welfare of the subjects. To maintain confidentiality, data were collected, de-identified, and stored electronically on a secure server that was accessible only by study personnel. Study results were grouped and generalized and not directly linked to individual participants. Historic (prehospital) spirometry values were recorded if available.

Outcomes

The primary outcome of our study was to determine the difference in cumulative SC dose between individuals treated with COPD PowerPlan use vs those treated without using the PowerPlan, the “usual care” group. SC doses were converted to prednisone equivalents based on known equivalencies for ease of comparison. For example, 1 mg of methylprednisolone equates to 1.25 mg of prednisone.

Secondary outcomes included LOS, duration of intravenous steroid use in days, dose and duration of oral prednisone use, as well as all-cause hospital readmission rates at 30 and 90 days.

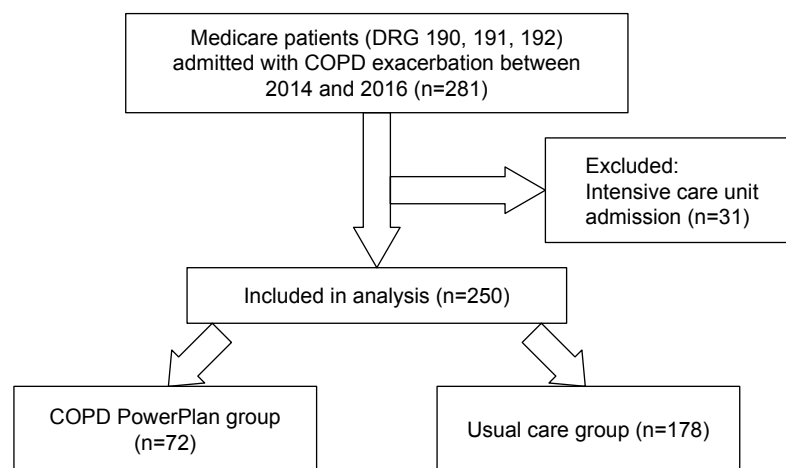


Figure 1 Patient flow diagram.

Abbreviation: DRG, diagnosis-related group.

EHS-based order set: the COPD exacerbation PowerPlan

The UAB Hospital system uses IMPACT EHS software developed by Cerner (Millennium Version; Kansas City, MO, USA). The COPD PowerPlan is a comprehensive order set that was developed by a panel of experts including physicians, respiratory therapists, nurses, and pharmacists. The COPD PowerPlan was implemented as a part of the UAB EHS in November 2013 as part of the Bundled Payments for Care Improvement Initiative.¹⁶

As shown in Figure 2, the COPD PowerPlan order set contained orders for 1) SC therapy that included methylprednisolone 40 mg intravenous (IV) every 12 hours for two doses followed by 4 days of oral 40 mg prednisone, 2) options for nebulized therapies, 3) options for antibiotic regimens, 4) laboratory and imaging orders, 5) noninvasive ventilation, and 6) nonpharmacologic interventions.

The PowerPlan was initiated and activated by providers at the time of hospital admission. Clinicians were educated and encouraged to use the PowerPlan at meetings, and using electronic reminders and through hospital administrative reminders in the 3 months prior to its implementation and quarterly in the first year of its launch. Use of the PowerPlan was encouraged but was optional. If providers chose to use the PowerPlan, they could use the default settings, including the short course of methylprednisolone or the provider could tailor the therapeutic regimen including corticosteroid type, dose, and duration based on personal preference and the clinical situation.

Statistical analysis

Data were expressed as mean±SD. Continuous variables were evaluated for normality based on quantile–quantile (QQ) plots and Shapiro–Wilk testing. Independent *t*-tests were used

to compare means of continuous variables and chi-square for categorical variables between groups.

Binary logistic regression was performed to determine if patient characteristics at the time of admission influenced provider's decision to activate the PowerPlan. Factors associated with PowerPlan use (*P*-value of <0.1) on univariate logistic regression were entered into a multivariate model.

Univariate linear regression was performed to determine predictors of hospital LOS. Variables associated with LOS on univariate linear regression models with a *P*-value <0.1 were entered into the final multivariable models. Cox-proportional hazards models were used to define time to readmission. We used SPSS (version 24.0; IBM Corporation, Armonk, NY, USA) for all statistical analyses. Statistical significance was set at *P*-value <0.05.

Results

Of 281 Medicare patients discharged with an AECOPD diagnosis between January 2014 and December 2016, 250 were included in the analysis as shown in Figure 1. The 250 patients were 62±11 years old, 58% males, 71% white with an FEV₁ 55.1%±23.6% predicted. Spirometry data were available in 70% of the patient population (66% [118/178] in the PowerPlan and 78% [56/72] in the usual care group; *P*=0.07). We had no other missing data for other variables. Baseline characteristics of the cohort are shown in Table 1 and the PowerPlan was used in 72 patients (29%). Demographically, both the groups were similar. Prior AECOPD were more common in the PowerPlan group compared with the usual care group (44% vs 29%, *P*=0.021). The PowerPlan group had a higher pack-year history of smoking when compared with the usual care group. Patients in the PowerPlan group had a lower FEV₁% and a higher proportion

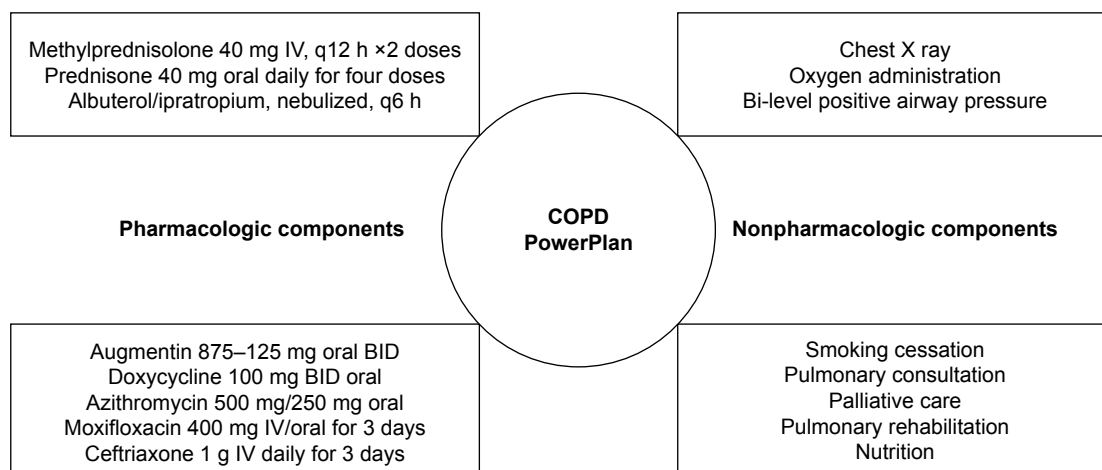


Figure 2 Components included in the PowerPlan order set.
Abbreviations: BID, twice a day; IV, intravenous.

Table 1 Baseline characteristics

Variables	Total cohort (n=250)	Usual care (n=178)	PowerPlan (n=72)	P-value
Age, years	69±11	69±12	70±8	0.848
Male	145 (58%)	107 (65%)	38 (33%)	0.289
White race	178 (71%)	129 (73)	49 (68%)	0.446
BMI, kg/m ²	27±8	26±8	30±17	0.682
Current smoker	84 (34%)	53 (30%)	31 (43%)	0.053
Smoking pack-years	41±35	38±34	50±34	0.050
FEV ₁ %	53±22	56±24	49±19	0.089
FEV ₁ /FVC	0.56±0.15	0.57±0.16	0.53±0.12	0.077
≥1 AECOPD within the previous 12 months	84 (34%)	52 (29%)	32 (44%)	0.021
Hypertension	195 (78%)	138 (78%)	57 (79%)	0.778
Diabetes mellitus	66 (26%)	44 (25%)	22 (31%)	0.314
Congestive heart failure	68 (27%)	44 (25%)	24 (33%)	0.167
Coronary artery disease	66 (26%)	43 (24%)	23 (33%)	0.207
Obstructive sleep apnea	26 (10%)	21 (12%)	5 (7%)	0.257

Note: Data are expressed as mean±SD or n (%).

Abbreviations: AECOPD, acute exacerbations of COPD; BMI, body mass index; FEV₁, forced expiratory volume in one second; FVC, forced vital capacity.

of current smokers, though these differences were not statistically significant. The incidence of comorbidities such as hypertension, diabetes, congestive heart failure, obstructive sleep apnea, and coronary artery disease did not differ between the two groups.

Factors associated with PowerPlan selection

As shown in Table 2, current smoking status and prior AECOPD were the only factors significantly associated with PowerPlan use on univariate analyses. In a multivariate model that included FEV₁ percent predicted, smoking status, smoking history, or hospitalization for AECOPD within

12 months of the index visit, no variable was significantly associated with PowerPlan use.

PowerPlan use and cumulative corticosteroid use

As shown in Table 3, cumulative steroid dose was 31% lower in the PowerPlan group when compared with the usual care group (420±224 vs 611±462 mg, $P<0.001$). This reduction was driven by a 47% decrease in intravenous SC administration and a 24% decrease in oral SC use in the PowerPlan group when compared with the usual care group.

The mean duration of intravenous SC use was lower by 1 day in the PowerPlan group (2.2±1.2 vs 3.2±1.9 days, $P<0.001$). Patients in the PowerPlan group had fewer days of total SC treatment compared with the usual care group, though this failed to reach statistical significance (9.6 vs 13 days, $P=0.075$).

PowerPlan use was associated with reduced length of stay

Patients in the PowerPlan group had shorter hospital LOS compared with those in the control group (Figure 3). In unadjusted linear regression models, age, PowerPlan use, SC use, and cumulative steroid dose were inversely associated with hospital LOS. PowerPlan use was independently associated with LOS (beta =−0.92, $P=0.006$), when adjusted for age, sex, race, and smoking status as shown in Table 4.

PowerPlan use and all-cause hospital readmission

The proportion of participants readmitted within 30 days was the same between the two groups (25% in each group,

Table 2 Associations between clinical factors and PowerPlan use

Variables	Univariate logistic regression			Multivariate logistic regression ^a		
	OR	95% CI	P-value	OR	95% CI	P-value
Age	1.00	0.98–1.03	0.87			
Female sex	0.74	0.43–1.29	0.29			
White race	1.26	0.70–2.29	0.45			
Current smoker	1.78	1.01–3.14	0.045	1.52	0.60–2.84	0.309
Pack-year history	1.01	1.00–1.02	0.056	1.00	0.99–1.01	0.486
FEV ₁ %	0.99	0.97–1.002	0.091	1.00	0.98–1.02	0.826
Hypertension	1.10	0.56–2.15	0.78			
Diabetes mellitus	1.37	0.75–2.51	0.31			
Congestive heart failure	1.52	0.84–2.77	0.17			
Coronary artery disease	1.47	0.81–2.69	0.21			
Obstructive sleep apnea	0.56	0.20–1.54	0.26			
Home oxygen use	1.39	0.80–2.43	0.25			
Chronic corticosteroid use	0.90	0.49–1.63	0.72			
≥1 AECOPD within the previous 12 months	1.94	1.10–3.41	0.022	1.31	0.60–2.84	0.501

Note: ^aMultivariable model adjusted for current smoker, FEV₁ % predicted, smoking history (pack-year), and having ≥1 AECOPD in the previous 12 months.

Abbreviations: AECOPD, acute exacerbations of COPD; FEV₁, forced expiratory volume in one second; OR, odds ratio.

Table 3 PowerPlan use and systemic corticosteroid therapy

Variables	Usual care group (n=178)	PowerPlan used (n=72)	Point difference (95% CI)	P-value
Cumulative total corticosteroid dose, ^a mg	611±462	420±224	191 (99 to 281)	<0.001
Cumulative intravenous SC dose, ^a mg	471±397	246±146	225 (135 to 312)	<0.001
Cumulative oral SC dose, ^a mg	323±190	245±109	78 (36 to 118)	<0.001
Duration of intravenous SC, days	3.2±1.9	2.2±1.2	1.0 (0.4 to 1.4)	<0.001
Duration of total corticosteroid use, days	13.0±15.6	9.6±5.5	3.4 (-0.3 to 7.1)	0.075
Duration of outpatient corticosteroids prescribed at the time of discharge, days	6.9±6.3	5.1±4.6	1.8 (0.3 to 1.3)	0.018

Notes: Data are expressed as mean±SD. ^aAll steroid doses are expressed as prednisone equivalent doses.

Abbreviation: SC, systemic corticosteroids.

$P=0.96$). There were no differences in 90-day readmissions between groups (44% in the PowerPlan group vs 38% in the usual care group, $P=0.37$). There were no differences in time until readmission in the PowerPlan group vs the usual care group (90 vs 93 days, hazard ratio [HR] 1.31 95% CI 0.86–1.99, $P=0.21$).

Discussion

We show that the use of a standardized EHS-based COPD PowerPlan was associated with lower amount and shorter duration of parenteral corticosteroids use for managing patients hospitalized with an AECOPD. The use of the PowerPlan and lower SC use were also associated with a reduction in hospital stay and were not associated with changes in 30- and 90-day readmission rates. To our knowledge, this is the first study to apply the lessons learned in the REDUCE trial in a quaternary care hospital in the United States using an EHS-based intervention.¹²

SC are an integral component of managing COPD exacerbations. The VA SCOPE trial published in 1999 was

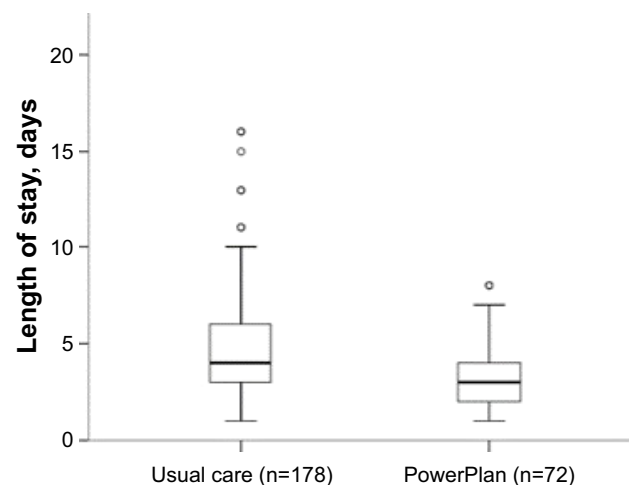


Figure 3 PowerPlan use and hospital length of stay for AECOPD. Median LOS in the PowerPlan group was 3 (IQR 2–4) days vs 4 (IQR 3–6) days in the usual care group ($P=0.02$). °Denotes outliers.

Abbreviations: AECOPD, acute exacerbations of COPD; IQR, interquartile range; LOS, length of stay.

the first randomized controlled trial to evaluate the efficacy of glucocorticoids in managing AECOPD. In that study, a 2-week course of corticosteroid (methylprednisolone and prednisone) decreased the rate of treatment failure by 10% when compared with placebo and reduced the LOS in the hospital by 1.2 days.⁷ In 2013, the REDUCE trial further demonstrated that a 5-day course of corticosteroid was non-inferior to a 14-day course with regards to re-exacerbation rates within the following 6 months.¹² These findings were later confirmed by a meta-analysis, which also showed no difference in readmission rates and outcomes with a shorter course of corticosteroids when compared with a conventional 10–14 days course.¹⁷ However, real-world experience after implementation of short-course CS treatment for exacerbations is lacking and, despite the GOLD recommendations for a 5–7 days course of CS for management of AECOPD hospitalizations,¹¹ CS dosing and duration vary widely across clinical practice, and many patients are still treated with unnecessarily long steroid tapers.¹⁸ Prolonged courses of systemic steroid use are associated with an increased risk of adverse effects including hypertension, hyperglycemia, edema, osteoporosis, and peripheral muscle weakness and can contribute to prolonged hospitalization.^{7–10}

We showed that the use of an EHS-based intervention was associated with a 31% reduction in SC dose. This finding was

Table 4 Predictors of hospital LOS

Variables	Univariate		Multivariate	
	β	P-value	β	P-value
Age	-0.038	0.004	-0.035	0.013
Race	0.012	0.973	0.090	0.784
Sex	0.493	0.121	0.491	0.104
Use of PowerPlan	-1.091	0.002	-0.920	0.006
Use of systemic steroids	-1.160	0.036	-0.479	0.379
Use of antibiotics	-0.146	0.826	-	-
Current smoker	0.118	0.723	0.070	0.838
FEV ₁	-0.001	0.929	-	-

Note: Variables included in the multivariate model: PowerPlan use, use of systemic steroids, age, sex, race, and smoking status.

Abbreviations: FEV₁, forced expiratory volume in one second; LOS, length of stay.

driven by an earlier transition from intravenous to oral SC therapy. These findings are consistent with the results from a study by Sonstein et al in 2014 where the use of an EHS-based COPD order set significantly decreased the amount of parenteral steroid used in the first 48 hours of admission but did not affect hospital LOS.¹⁹ This could be explained by the fact that their order set was developed in 2011 when a 10–14-day course of steroids was recommended for treating acute exacerbations.

Hospitalizations for COPD exacerbations account for up to 40%–60% of total COPD-related costs.^{20,21} These costs are also affected by disease severity, age, and presence of comorbidities.^{22,23} Average costs per hospitalization can range from \$680 to \$6,770 for stage 1 and stage 3 COPD.²³ A study from 2012 showed the annual inpatient expenditure for AECOPD admissions to be as high as \$11.9 billion.²⁴ In addition to the financial burden, a prolonged hospital stay is also associated with cognitive disturbances, depression, social isolation, immobility, and increased risk of iatrogenic complications further contributing to deterioration in quality of life and increased readmissions.^{25–29} These factors are all associated with increased health care utilization which makes reducing LOS a priority for health care systems.

In our cohort, patients who were treated using the PowerPlan had a shorter LOS when compared with the usual care group by 1.1 days. This difference is significant in terms of reducing cost and morbidity associated with prolonged hospitalization. We believe this observed reduced LOS was driven by an earlier transition to oral corticosteroids and not due to other aspects of care included in the PowerPlan, such as smoking cessation, pulmonary rehabilitation, or antibiotic use. There is always a concern for increase in readmission rates with a shorter hospital stay. We did not find any difference in 30- or 90-day readmission rates between the two groups.

EHS-based algorithms and order sets have shown to improve provider adherence to practice guidelines.^{13–15} Two recent studies also showed a reduction in LOS with implementation of EHS-based COPD order sets.^{13,30} These interventions mainly focused on improving adherence to the multidisciplinary components of the order set to reduce LOS and avoid prescription errors rather than promoting a tailored corticosteroid regimen. However, our focus was to educate providers and reduce the corticosteroid dosing by encouraging the use of PowerPlan. This is particularly important as COPD GOLD guidelines have evolved over time and their implementation in clinical practice still lags behind.³¹

Our study has the limitations of being a cohort study, and thus we are not able to assign causation to our intervention.

Additionally, patients were allocated into groups based on individual provider decision making, introducing selection bias, and the potential for confounding by indication. While this may be the case, we did not observe an association between clinical factors (demographics, lung function, smoking status, and prior AECOPD) and the use of the PowerPlan in logistic regression models adjusted for these covariates, though participants in the PowerPlan group were more often current smokers and were more likely to have had a hospitalization for an AECOPD within the 12 months prior to the index admission, factors that could potentially bias the results against the intervention. Furthermore, we did not observe that comorbidities or baseline COPD interventions (home oxygen use or chronic steroid use) influenced selection of PowerPlan by the provider. Another limitation was that the PowerPlan did not control the dose and duration of outpatient corticosteroids prescribed by the provider at the time of hospital discharge, which may have accounted for the longer than expected duration of steroid use in the PowerPlan group. Despite the longer overall duration of corticosteroid use, the PowerPlan group did receive fewer days of outpatient corticosteroids when compared with the usual care group (5.1 ± 4.6 vs 6.9 ± 6.3 days, $P=0.018$). Lastly, only 29% of patients were treated with PowerPlan. Although this reflects a relatively low usage rate by the providers, it is higher than prior reports showing a 19% utilization rate of order sets in their first few years of launch.³² We also noted that the use of PowerPlan increased from 24% in 2014 to 31% in 2016. This reflects a positive trend in practice change over the years.

Conclusion

We have demonstrated the real-world applicability of using a standardized EHS-based intervention on reducing corticosteroid exposure and hospital LOS in managing patients hospitalized with AECOPD without adversely affecting hospital readmissions. These findings suggest health systems can safely adopt EHS-based COPD treatment plans using currently accepted standard treatment regimens.

Acknowledgments

SPB was supported by the NIH/NHLBI (5K23HL133438), CSW was supported by the NIH (5TL1TR1418), and JMW was supported by the NIH/NHLBI (K08HL123940).

Author contributions

All authors contributed toward data analysis, drafting and revising the paper and agree to be accountable for all aspects of the work.

Disclosure

The authors report no conflicts of interest in this work.

References

- Rodriguez-Roisin R. Toward a consensus definition for COPD exacerbations. *Chest*. 2000;117(5 Suppl 2):398S–401S.
- Burge S, Wedzicha JA. COPD exacerbations: definitions and classifications. *Eur Respir J Suppl*. 2003;41:46S–53S.
- Piquet J, Chavaillon JM, David P, et al. High-risk patients following hospitalisation for an acute exacerbation of COPD. *Eur Respir J*. 2013;42(4):946–955.
- Yu AP, Yang H, Wu EQ, Setyawan J, Mocarski M, Blum S. Incremental third-party costs associated with COPD exacerbations: a retrospective claims analysis. *J Med Econ*. 2011;14(3):315–323.
- Davies L, Angus RM, Calverley PM. Oral corticosteroids in patients admitted to hospital with exacerbations of chronic obstructive pulmonary disease: a prospective randomised controlled trial. *Lancet*. 1999;354(9177):456–460.
- Thompson WH, Nielson CP, Carvalho P, Charan NB, Crowley JJ. Controlled trial of oral prednisone in outpatients with acute COPD exacerbation. *Am J Respir Crit Care Med*. 1996;154(2 Pt 1):407–412.
- Niewoehner DE, Erbland ML, Deupree RH, et al. Effect of systemic glucocorticoids on exacerbations of chronic obstructive pulmonary disease. Department of Veterans Affairs Cooperative Study Group. *N Engl J Med*. 1999;340(25):1941–1947.
- Mcevoy CE, Ensrud KE, Bender E, et al. Association between corticosteroid use and vertebral fractures in older men with chronic obstructive pulmonary disease. *Am J Respir Crit Care Med*. 1998;157(3 Pt 1):704–709.
- Decramer M, Lacquet LM, Fagard R, Rogiers P. Corticosteroids contribute to muscle weakness in chronic airflow obstruction. *Am J Respir Crit Care Med*. 1994;150(1):11–16.
- Smyllie HC, Connolly CK. Incidence of serious complications of corticosteroid therapy in respiratory disease. A retrospective survey of patients in the Brompton hospital. *Thorax*. 1968;23(6):571–581.
- Vogelmeier CF, Criner GJ, Martinez FJ, et al. Global Strategy for the Diagnosis, Management, and Prevention of Chronic Obstructive Lung Disease 2017 Report. GOLD Executive Summary. *Am J Respir Crit Care Med*. 2017;195(5):557–582.
- Leuppi JD, Schuetz P, Bingisser R, et al. Short-term vs conventional glucocorticoid therapy in acute exacerbations of chronic obstructive pulmonary disease: the REDUCE randomized clinical trial. *JAMA*. 2013;309(21):2223–2231.
- Brown KE, Johnson KJ, Deronne BM, Parenti CM, Rice KL. Order set to improve the care of patients hospitalized for an exacerbation of chronic obstructive pulmonary disease. *Ann Am Thorac Soc*. 2016;13(6):811–815.
- Terasaki J, Singh G, Zhang W, Wagner P, Sharma G. Using EMR to improve compliance with clinical practice guidelines for management of stable COPD. *Respir Med*. 2015;109(11):1423–1429.
- Kitchlu A, Abdelshaheed T, Tullis E, Gupta S. Gaps in the inpatient management of chronic obstructive pulmonary disease exacerbation and impact of an evidence-based order set. *Can Respir J*. 2015;22(3):157–162.
- Bhatt SP, Wells JM, Iyer AS, et al. Results of a medicare bundled payments for care improvement initiative for chronic obstructive pulmonary disease readmissions. *Ann Am Thorac Soc*. 2017;14(5):643–648.
- Walters JAE, Tan DJ, White CJ, et al. Systemic corticosteroids for acute exacerbations of chronic obstructive pulmonary disease. *Cochrane Database Syst Rev*. 2014;(9):CD001288.
- Vondracek SF, Hemstreet BA. Retrospective evaluation of systemic corticosteroids for the management of acute exacerbations of chronic obstructive pulmonary disease. *Am J Health Syst Pharm*. 2006;63(7):645–652.
- Sonstein L, Clark C, Seidensticker S, Zeng L, Sharma G. Improving adherence for management of acute exacerbation of chronic obstructive pulmonary disease. *Am J Med*. 2014;127(11):1097–1104.
- Halpin DM, Miravittles M. Chronic obstructive pulmonary disease: the disease and its burden to society. *Proc Am Thorac Soc*. 2006;3(7):619–623.
- Miravittles M, Murio C, Guerrero T, Gisbert R. Costs of chronic bronchitis and COPD: a 1-year follow-up study. *Chest*. 2003;123(3):784–791.
- Torabipour A, Hakim A, Ahmadi Angali K, Dolatshah M, Yusofzadeh M. Cost Analysis of Hospitalized Patients with Chronic Obstructive Pulmonary Disease: A State-Level Cross-Sectional Study. *Tanaffos*. 2016;15(2):75–82.
- Hilleman DE, Dewan N, Malesker M, Friedman M. Pharmacoeconomic evaluation of COPD. *Chest*. 2000;118(5):1278–1285.
- Perera PN, Armstrong EP, Sherrill DL, Skrepnek GH. Acute exacerbations of COPD in the United States: inpatient burden and predictors of costs and mortality. *COPD*. 2012;9(2):131–141.
- Creditor MC. Hazards of hospitalization of the elderly. *Ann Intern Med*. 1993;118(3):219–223.
- Gudmundsson G, Gislason T, Janson C, et al. Depression, anxiety and health status after hospitalisation for COPD: a multicentre study in the Nordic countries. *Respir Med*. 2006;100(1):87–93.
- Gill TM, Allore HG, Holford TR, Guo Z. Hospitalization, restricted activity, and the development of disability among older persons. *JAMA*. 2004;292(17):2115–2124.
- Ibañez M, Aguilar JJ, Maderal MA, et al. Sexuality in chronic respiratory failure: coincidences and divergences between patient and primary caregiver. *Respir Med*. 2001;95(12):975–979.
- Iyer AS, Bhatt SP, Garner JJ, et al. Depression is associated with readmission for acute exacerbation of chronic obstructive pulmonary disease. *Ann Am Thorac Soc*. 2016;13(2):197–203.
- Parikh R, Shah TG, Tandon R. COPD exacerbation care bundle improves standard of care, length of stay, and readmission rates. *Int J Chron Obstruct Pulmon Dis*. 2016;11:577–583.
- Sharif R, Cuevas CR, Wang Y, Arora M, Sharma G. Guideline adherence in management of stable chronic obstructive pulmonary disease. *Respir Med*. 2013;107(7):1046–1052.
- Sandhu SK, Chu J, Yurkovich M, Harriman D, Taraboanta C, Fitzgerald JM. Variations in the management of acute exacerbations of chronic obstructive pulmonary disease. *Can Respir J*. 2013;20(3):175–179.

International Journal of COPD

Dovepress

Publish your work in this journal

The International Journal of COPD is an international, peer-reviewed journal of therapeutics and pharmacology focusing on concise rapid reporting of clinical studies and reviews in COPD. Special focus is given to the pathophysiological processes underlying the disease, intervention programs, patient focused education, and self management protocols.

This journal is indexed on PubMed Central, MedLine and CAS. The manuscript management system is completely online and includes a very quick and fair peer-review system, which is all easy to use. Visit <http://www.dovepress.com/testimonials.php> to read real quotes from published authors.

Submit your manuscript here: <http://www.dovepress.com/international-journal-of-chronic-obstructive-pulmonary-disease-journal>