

Comparison of the predictive value of scoring systems on the prognosis of cirrhotic patients with suspected infection

Peng Lan, MSc^a, Shuo-Jia Wang, PhD^b, Qiu-Cheng Shi, PhD^c, Ying Fu, MD^d, Qing-Ye Xu, PhD^c, Tao Chen, MD^c, Yun-Xian Yu, PhD, MD^b, Kong-Han Pan, MD^a, Ling Lin, MD^a, Jian-Cang Zhou, MD^{a,*}, Yun-Song Yu, MD^c

Abstract

Cirrhotic patients with infection are prone to develop sepsis or even septic shock rendering poorer prognosis. However, few methods are available to predict the prognosis of cirrhotic patients with infection although there are some scoring systems can be used to predict general patients with cirrhosis. Therefore, we aimed to explore the predictive value of scoring systems in determining the outcome of critically ill cirrhotic patients with suspected infection.

This was a retrospective cohort study based on a single-center database. The prognostic accuracy of the systemic inflammatory response syndrome (SIRS) criteria, quick Sequential Organ Failure Assessment (qSOFA), chronic liver failure (CLIF)-SOFA, quick CLIF-SOFA (qCLIF-SOFA), CLIF-consortium organ failure (CLIF-C OF), Model for End-Stage Liver Disease (MELD), and Simplified Acute Physiology Score (SAPS) II were compared by using area under the receiver operating characteristic (AUROC) curve and net benefit with decision curve analysis. The primary endpoint was in-hospital mortality while the secondary endpoints were duration of hospital and intensive care unit (ICU) stay and ICU mortality.

A total of 1438 cirrhotic patients with suspected infection were included in the study. Nearly half the patients (50.2%) were admitted to the ICU due to hepatic encephalopathy and the overall in-hospital mortality was 32.0%. Hospital and ICU mortality increased as the score of each scoring system increased ($P < .05$ for all trends). The AUROC of CLIF-SOFA (AUROC, 0.742; 95% confidence interval, CI, 0.714–0.770), CLIF-C OF (AUROC, 0.741; 95% CI, 0.713–0.769), and SAPS II (AUROC, 0.759; 95% CI, 0.733–0.786) were significantly higher than SIRS criteria (AUROC, 0.618; 95% CI, 0.590–0.647), qSOFA (AUROC, 0.612; 95% CI, 0.584–0.640), MELD (AUROC, 0.632; 95% CI, 0.601–0.662), or qCLIF-SOFA (AUROC, 0.680; 95% CI, 0.650–0.710) ($P < .05$ for all). In the decision curve analysis, the net benefit of implementing CLIF-SOFA and CLIF-C OF to predict the prognosis of cirrhotic patients with suspected infection were higher compared with SIRS, qSOFA, MELD, or qCLIF-SOFA.

CLIF-SOFA and CLIF-C OF scores, as well as SAPS II were better tools than SIRS, qSOFA, MELD, or qCLIF-SOFA to evaluate the prognosis of critically ill cirrhotic patients with suspected infection.

Abbreviations: ACLF = acute-on-chronic liver failure, ANOVA = analysis of variance, APACHE II = Acute Physiology and Chronic Health Evaluation II, AUROC = area under receiver operating characteristic, CI = confidence interval, CLIF-C OF = CLIF-consortium organ failure, CLIF-SOFA = chronic liver failure-SOFA, CTP score = Child-Turcotte-Pugh score, GCS = Glasgow Coma Scale, HE = hepatic encephalopathy, ICD = International Classification of Diseases, ICU = intensive care unit, INR = international normalized ratio, IQR = interquartile range, MELD = Model for End-Stage Liver Disease, MIMIC = Medical Information Mart for Intensive Care, MSCIC = modified score for critically ill cirrhosis, qCLIF-SOFA = quick CLIF-SOFA, qSOFA = quick Sequential Organ Failure Assessment, RFH score = Royal Free Hospital score, SAPS II = Simplified Acute Physiology Score II, SIRS = systemic inflammatory response syndrome, SQL = structure query language, WBC = white blood cell.

Keywords: cirrhosis, infection, prognosis, scoring system

Editor: Vincent François.

The authors declare no conflicts of interests.

^a Department of Critical Care Medicine, Sir Run Run Shaw Hospital, ^b Department of Epidemiology and Health Statistics, School of Public Health, ^c Department of Infectious Disease, ^d Department of Clinical Laboratory, Sir Run Run Shaw Hospital, Zhejiang University School of Medicine, Hangzhou, Zhejiang, China.

* Correspondence: Jian-Cang Zhou, Department of Critical Care Medicine, Sir Run Run Shaw Hospital, Zhejiang University School of Medicine, Hangzhou 310016, China. (e-mail: jiancangzhou@zju.edu.cn).

Copyright © 2018 the Author(s). Published by Wolters Kluwer Health, Inc. This is an open access article distributed under the Creative Commons Attribution License 4.0 (CCBY), which permits unrestricted use, distribution, and reproduction in any medium, provided the original work is properly cited.

Medicine (2018) 97:28(e11421)

Received: 21 September 2017 / Accepted: 12 June 2018

<http://dx.doi.org/10.1097/MD.0000000000011421>

1. Introduction

Liver cirrhosis is a common disease and decompensated cirrhosis is frequently complicated with infection.^[1] Surprisingly, infection rates in hospitalized patients with cirrhosis were 4- to 5-fold higher than those among the general patient population, and associated with poor prognosis.^[2] Given that cirrhosis is commonly associated with some immune dysfunction, once infected, the cirrhotic patients are prone to develop severe sepsis and septic shock.^[3] Despite the advances in clinical care and treatment, the mortality rate of sepsis and septic shock remained 20% to 60%.^[4] To more accurately stratify the risk of patients with sepsis, in 2016, Sepsis 3 definition was proposed and Sequential Organ Failure Assessment (SOFA) score was recommended to define sepsis while quick SOFA (qSOFA) was used to identify sepsis patients in ward and emergency

Table 1
Components of the seven scoring systems.

Scoring systems	Items					
SAPS II ^[16]	–					
MELD ^[17]	$R = 9.57 * \ln(\text{creatinine mg/dL}) + 3.78 * \ln(\text{bilirubin mg/dL}) + 11.20 * \ln(\text{INR}) + 6.43 * (\text{cause of cirrhosis})$					
SIRS criteria ^[5]	Temperature > 38°C or < 36°C Heart rate > 90/min Respiratory rate > 20/min or PaCO ₂ < 32 mm Hg (4.3 kPa) White blood cell count > 12000/mm ³ or < 4000/mm ³ or > 10% immature bands					
qSOFA score ^[5]	Respiratory rate ≥ 22/min Altered mentation Systolic blood pressure ≥ 100 mmHg					
CLIF-SOFA score ^[10]		0 point	1 point	2 points	3 points	4 points
	Bilirubin (mg/dL)	< 1.2	≥ 1.2 to < 2.0	≥ 2.0 to < 6.0	≥ 6.0 to < 12	≥ 12
	Creatinine (mg/dL)	< 1.2	≥ 1.2 to < 2.0	≥ 2.0 to < 3.5	≥ 3.5 to < 5.0 or use of renal replacement therapy	≥ 5.0
	Hepatic encephalopathy	No	Grade 1	Grade 2	Grade 3	Grade 4
	INR	< 1.1	≥ 1.1 to < 1.25	≥ 1.25 to < 1.5	≥ 1.5 to < 2.5	≥ 2.5 Or platelet count ≤ 20*10 ⁹ /L
	Mean arterial pressure (mm Hg)	≥ 70	< 70	Dopamine ≤ 5 or dobutamine or terlipressin	Dopamine > 5 or epinephrine ≤ 0.1 or norepinephrine ≤ 0.1	Dopamine > 15 or epinephrine > 0.1 or norepinephrine > 0.1
	Lung PaO ₂ /FiO ₂ or SpO ₂ /FiO ₂	> 400 > 512	> 300 to ≤ 400 > 357 to ≤ 512	> 200 to ≤ 300 > 214 to ≤ 357	> 100 to ≤ 200 > 89 to ≤ 214	≤ 100 ≤ 89
qCLIF-SOFA ^[12]		0 point			1 point	
	Bilirubin (mg/dl)	< 6.2			≥ 6.2	
	Creatinine (mg/dl)	< 1.9			≥ 1.9	
	INR	< 1.9			≥ 1.9	
	MAP (mmHg)	> 70			≤ 70	
	Vasopressin used	No			Yes	
CLIF-C OF ^[11]				1 point	2 points	3 points
	Bilirubin (mg/dL)			< 6	≥ 6 to < 12	≥ 12
	Creatinine (mg/dL)			< 2	≥ 2 to < 3.5	≥ 3.5 or renal replacement
	Hepatic encephalopathy			Grade 0	Grade 1–2	Grade 3–4
	INR			< 2.0	≥ 2.0 to < 2.5	≥ 2.5
	Mean arterial pressure (mm Hg)			≥ 70	< 70	Use of vasopressors
	Lung PaO ₂ /FiO ₂ or SpO ₂ /FiO ₂			> 300 > 357	≤ 300 and > 200 > 214 and ≤ 357	≤ 200 ≤ 214

CLIF-C OF = chronic liver failure-consortium organ failure, CLIF-SOFA = chronic liver failure-sequential organ failure assessment, INR = international normalized ratio, MAP = mean arterial pressure, MELD = Model for End-Stage Liver Disease, qCLIF-SOFA = quick chronic liver failure-Sequential Organ Failure Assessment, qSOFA = quick Sequential Organ Failure Assessment, SAPS II = Simplified Acute Physiology Score II, SIRS = systemic inflammatory response syndrome.

department early.^[5] Thereafter, systemic inflammatory response syndrome (SIRS), SOFA and qSOFA were validated for sepsis patients in intensive care unit (ICU) and emergency department in different countries.^[6–8]

On the other hand, for general cirrhotic patients, some liver-specific scores such as Model for End-Stage Liver Disease (MELD),^[9] chronic liver failure (CLIF)-SOFA,^[10] and CLIF-consortium organ failure (CLIF-C OF)^[11] have long been used to evaluate patients' outcome. Moreover, recently, the quick CLIF-SOFA (qCLIF-SOFA)^[12] presented good discriminative ability for outcome of cirrhotic patients. However, for cirrhotic patients with suspected infection, there was no unanimous consent on the superiority of these scores when predicting the prognosis of these patients. Hence, we sought to answer the question by comparing the prognostic accuracy of the abovementioned scoring systems using MIMIC (Medical Information Mart for Intensive Care) III database.

2. Materials and methods

2.1. Data source and extraction

This study was based on a publicly available ICU database named MIMIC-III (version 1.4), a large, single-center database containing information of more than 40,000 patients admitted to Beth Israel Deaconess Medical Center (a teaching hospital of Harvard Medical School in Boston, MA) from 2001 to 2012. The database contains data of general information, treatment processes, and survival data. The access of the MIMIC III database for research was approved by the Institutional Review Boards of Beth Israel Deaconess Medical Center after completion of the NIH web-based course named "Protecting Human Research Participants." Since all patients were de-identified, informed consent was waived. Data was extracted from MIMIC-III by using structure query language (SQL) with pgAdmin4 PostgreSQL 9.6.

Table 2**Baseline characteristics of critical ill cirrhotic patients with suspected infection.**

Patients' characteristics	Total (1438)	Survivors (n=978)	Non-survivors (n=460)	P
Male, n (%)	924 (64.3)	620 (63.4)	304 (66.1)	.350
Age, n (%)				
16–30	12 (0.8)	5 (0.5)	7 (1.5)	.058
31–59	785 (54.6)	548 (56.0)	237 (51.5)	
≥60	641 (44.6)	425 (43.5)	216 (47.0)	
Ethnicity, n (%)				
White	1052 (73.2)	737 (75.4)	315 (68.5)	<.001
Black	127 (8.8)	92 (9.4)	35 (7.6)	
Asian	27 (1.9)	15 (1.5)	12 (2.6)	
Hispanic/Latino	67 (4.7)	47 (4.8)	20 (4.3)	
Others	165 (11.5)	87 (8.9)	78 (17.0)	
Admission type, n (%)				
Elective	74 (5.1)	62 (6.3)	12 (2.6)	.003
Emergency	1329 (92.4)	896 (91.6)	433 (94.1)	
Urgent	35 (2.4)	20 (2.0)	15 (3.3)	
Admission from, n (%)				
Emergency room	591 (41.1)	407 (41.6)	184 (40.0)	<.001
Clinic/physician referral	504 (35.0)	386 (39.5)	118 (25.7)	
Transferred from other medical institutions	343 (23.9)	185 (18.9)	158 (34.3)	
Reasons for admission				
Encephalopathy	722 (50.2)	464 (47.4)	258 (56.1)	.003
Gastrointestinal bleeding	229 (15.9)	162 (16.6)	67 (14.6)	.374
Renal failure	94 (6.5)	60 (6.1)	34 (7.4)	.433
Alcoholic intoxication	40 (2.8)	27 (2.8)	13 (2.8)	1.000
Ascites	38 (2.6)	20 (2.0)	18 (3.9)	.060
Infection category				<.001
Non-sepsis	22 (1.5)	20 (2.0)	2 (0.4)	
Sepsis	1150 (80.0)	854 (87.3)	296 (64.3)	
Septic shock	226 (18.5)	104 (10.6)	162 (35.2)	
Comorbidity, n (%)				
Diabetes mellitus	426 (29.6)	288 (29.4)	138 (30.0)	.879
Alcohol abuse/dependence	418 (29.1)	260 (26.6)	158 (34.3)	.003
Hypertension	360 (25.0)	253 (25.9)	107 (23.3)	.318
Congestive heart failure	283 (19.7)	185 (18.9)	98 (21.3)	.322
Chronic kidney disease	277 (19.3)	185 (18.9)	92 (20.0)	.679
Malignant neoplasm	200 (13.9)	139 (14.2)	61 (13.3)	.686
COPD	127 (8.8)	88 (9.0)	39 (8.5)	.823
AIDS	71 (4.9)	51 (5.2)	20 (4.3)	.564
Etiology of Cirrhosis				.007
Alcoholic cirrhosis	687 (47.8)	450 (46.0)	237 (51.5)	
Viral cirrhosis	273 (19.0)	175 (17.9)	98 (21.3)	
Biliary cirrhosis	34 (2.4)	23 (2.4)	11 (2.4)	
Others	444 (30.9)	330 (33.7)	114 (24.8)	
SAPS II, median (IQR)	56.0 (36.0–56.8)	41.5 (33.0–51.0)	55.0 (46.0–67.0)	<.001
Laboratory data				
Alanine aminotransferase, IU/L	35.0 (21.0–72.0)	34.0 (20.0–74.0)	38.5 (22.0–71.0)	.218
Aspartate aminotransferase, IU/L	69.0 (41.0–140.8)	66.0 (38.0–133.0)	77.0 (47.0–159.0)	.001
Albumin, g/dL	2.9 (2.4–3.3)	2.9 (2.5–3.3)	2.7 (2.3–3.2)	<.001
Total bilirubin, mg/dL	3.3 (1.4–7.4)	2.8 (1.3–6.0)	5.2 (2.1–13.1)	<.001
INR	1.7 (1.4–2.1)	1.6 (1.4–1.9)	2.0 (1.6–2.7)	<.001
Partial thromboplastin time, second	39.5 (32.7–50.8)	37.4 (31.8–46.4)	44.2 (36.0–56.3)	<.001
Platelets, 10 ³ /μL	111.0 (72.0–168.8)	116.0 (77.0–175.0)	100.0 (62.0–154.0)	<.001
Creatinine, mg/dL	1.3 (0.9–2.2)	1.2 (0.8–2.0)	1.5 (1.0–2.7)	<.001
Lactate, mmol/L	2.2 (1.6–3.5)	2.0 (1.5–2.9)	2.9 (2.0–4.7)	<.001
WBC count, ×10 ³ /μL	8.9 (5.8–13.4)	8.5 (5.6–12.4)	10.1 (6.2–14.9)	<.001

AIDS=acquired immune deficiency syndrome, COPD=chronic obstructive pulmonary disease, INR=international normalized ratio, IQR=interquartile range, SAPS II=Simplified Acute Physiology Score II, WBC=white blood cell.

2.2. Inclusion criteria and definitions

Patients with liver cirrhosis and suspected infection were included. Cirrhotic patients were extracted according to

International Classification of Diseases (ICD)-9 codes (5712, 5715, 5716 indicated “alcoholic cirrhosis of liver,” “cirrhosis of liver without mention of alcohol,” and “biliary cirrhosis,” respectively). Of the cirrhotic patients, those with suspected

Table 3**Infection site and causative agents of critical ill cirrhotic patients with suspected infection (n = 1171).**

Patients' characteristics	Total (1171)	Survivors (n = 786)	Non-survivors (n = 385)	P
Infection site, n (%)				
Urinary	582 (49.7)	379 (48.2)	203 (52.7)	.165
Respiratory	458 (39.1)	259 (33.0)	199 (51.7)	<.001
Bloodstream	389 (33.2)	222 (28.2)	167 (43.4)	<.001
Peritoneal	113 (9.6)	63 (8.0)	50 (13.0)	.009
Gastrointestinal	56 (4.8)	42 (5.3)	14 (3.6)	.254
Pleural	21 (1.8)	10 (1.3)	11 (2.9)	.092
Skin and soft tissue	37 (3.2)	27 (3.4)	10 (2.6)	.554
Gram-negative				
<i>Escherichia coli</i>	171 (14.6)	108 (13.7)	63 (16.4)	.268
<i>Pseudomonas aeruginosa</i>	55 (4.7)	31 (3.9)	24 (6.2)	.111
<i>Klebsiella</i> species				
<i>Klebsiella pneumoniae</i>	102 (8.7)	64 (8.1)	38 (9.9)	.382
<i>Klebsiella oxytoca</i>	16 (1.4)	12 (1.5)	4 (1.0)	.684
<i>Corynebacterium diphtheria</i>	39 (3.3)	25 (3.2)	14 (3.6)	.814
<i>Proteus mirabilis</i>	9 (0.8)	6 (0.8)	3 (0.8)	>.999
<i>Hemophilus</i>	17 (1.5)	14 (1.8)	3 (0.8)	.277
<i>Enterobacter</i> spp.				
<i>Enterobacter cloacae</i>	44 (3.8)	34 (4.3)	10 (2.6)	.195
<i>Enterobacter aerogenes</i>	6 (0.5)	4 (0.5)	2 (0.5)	>.999
<i>Xanthomonas</i>	21 (1.8)	13 (1.7)	8 (2.1)	.780
<i>Serratia marcescens</i>	12 (1.0)	8 (1.0)	4 (1.0)	>.999
<i>Acinetobacter baumannii</i>	4 (0.3)	4 (0.5)	0 (0.0)	.309
<i>Lactobacillus</i>	17 (1.5)	10 (1.3)	7 (1.8)	.636
<i>Moraxella catarrhalis</i>	3 (0.3)	3 (0.4)	0 (0.0)	.555
<i>Citrobacter</i> spp.				
<i>Citrobacter freundii</i> complex	10 (0.9)	7 (0.9)	3 (0.8)	>.999
<i>Citrobacter koseri</i>	2 (0.2)	2 (0.3)	0 (0.0)	>.999
Gram-positive				
<i>Staphylococcus</i> spp.				
<i>Staphylococcus, coagulase negative</i>	254 (21.7)	170 (21.6)	84 (21.8)	>.999
<i>Staphylococcus aureus, coagulase positive</i>	251 (21.4)	159 (20.2)	92 (23.9)	.174
<i>Streptococcus</i> spp.				
<i>Beta streptococcus</i>	24 (2.0)	18 (2.3)	6 (1.6)	.542
<i>Viridans streptococcus</i>	32 (2.7)	24 (3.1)	8 (2.1)	.441
<i>S pneumoniae</i>	17 (1.5)	12 (1.5)	5 (1.3)	.963
<i>E</i> spp.				
<i>Enterococcus faecium</i>	43 (3.7)	27 (3.4)	16 (4.2)	.652
<i>Enterococcus faecalis</i>	15 (1.3)	12 (1.5)	3 (0.8)	.409
Anaerobes				
<i>Clostridium difficile</i>	52 (4.4)	38 (4.8)	14 (3.6)	.433
Fungi				
Yeast	487 (41.6)	275 (35.0)	212 (55.1)	<.001
<i>Candida albicans</i>	70 (6.0)	37 (4.7)	33 (8.6)	.013
<i>Aspergillus</i>	13 (1.1)	3 (0.4)	10 (2.6)	.001
Virus	9 (0.8)	4 (0.5)	5 (1.3)	.164

Among 1438 critical ill cirrhotic patients with suspected infection, 1171 were with positive microbiological culture.

infection were extracted if one of the following criteria was fulfilled: ICD-9 contained any of the following term “infection,” “pneumonia,” “meningitis,” “peritonitis,” “bacteremia,” “sepsis,” or “septic”; positive microbiological culture.^[13] Of all the cirrhotic patients, those diagnosed with hepatic encephalopathy (HE) was identified by ICD-9 code of 5722. According to previous studies,^[14,15] Glasgow Coma Scale (GCS) was associated with West-Haven grade to some degree. Given GCS is somewhat consistent with West Haven grade,^[15] thus, in this study, HE patients with GCS 15 and 3 to 5 scores were categorized as grade 1 and 4, respectively, while those with GCS 13 to 14 and 6 to 12 scores fell into grade 2 and 3, respectively.

Demographic, laboratory, and clinical data on ICU admission were collected including age, gender, ethnicity, admission

location, Simplified Acute Physiology Score (SAPS) II, comorbidities, complication of cirrhosis, in-hospital and ICU outcomes, some laboratory, and clinical parameters. Prognostic scoring systems including SAPS II, CLIF-SOFA, SIRS, qSOFA, qCLIF-SOFA, MELD, and CLIF-C OF were calculated for all patients (Table 1).^[5,10,11,12,16,17] CLIF-SOFA and CLIF-C OF shares the 6 components including bilirubin, kidney, HE grades, international normalized ratio (INR), circulation, and lungs. However, subscores of each component ranged from 0 to 4 for CLIF-SOFA, whereas from 1 to 3 for CLIF-C OF.^[10,11] As for qCLIF-SOFA, it included bilirubin, creatinine, INR, mean arterial pressure and vasopressin usage and each with subscores of 0 or 1.^[12] Recently proposed qSOFA score contained respiratory rate, mentation status and systolic blood pressure.^[5]

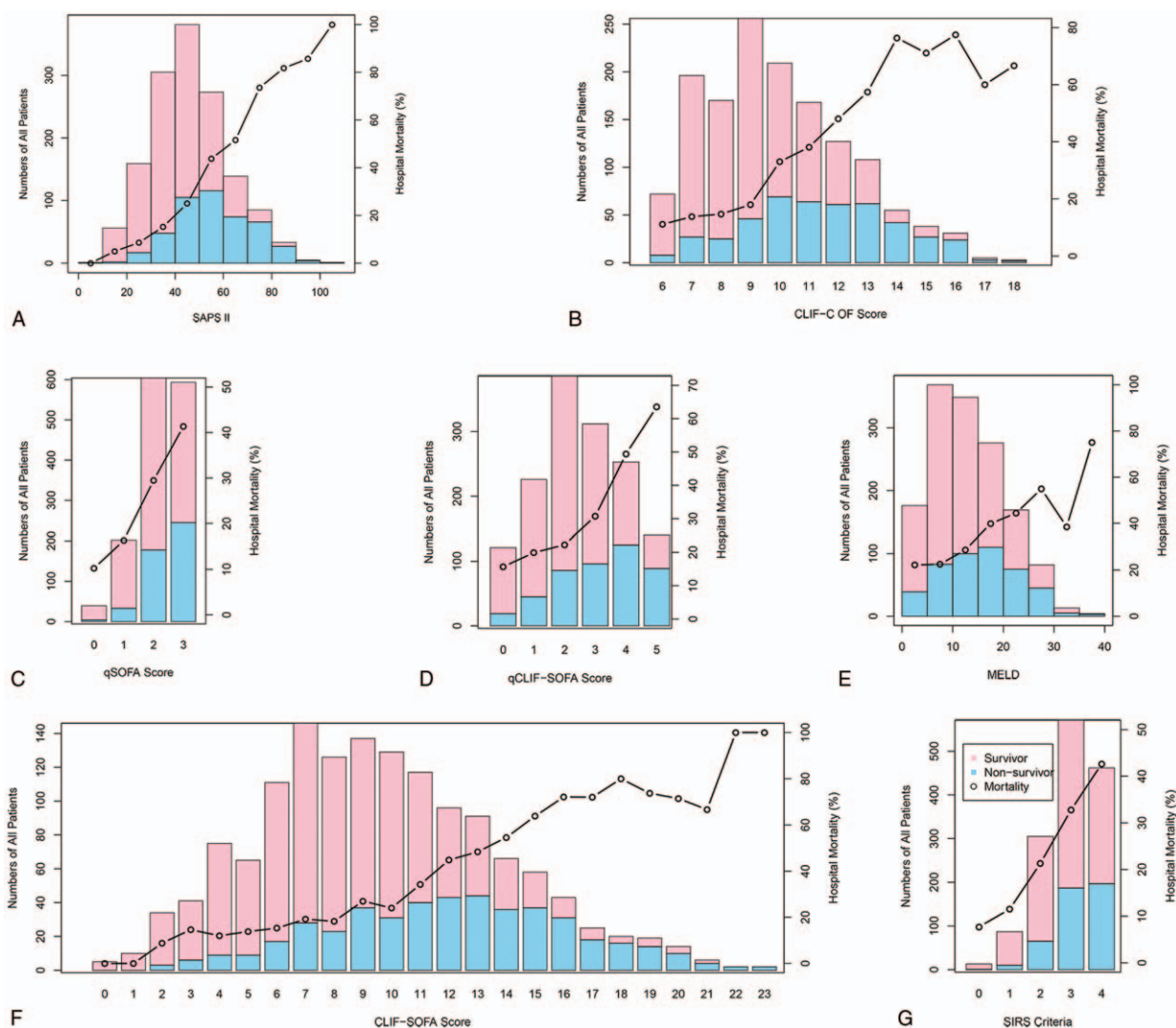


Figure 1. Distribution of all the patients and in-hospital mortality according to the score levels of each scoring system. CLIF-C OF = CLIF-consortium organ failure, CLIF-SOFA = chronic liver failure-SOFA, MELD = Model for End-Stage Liver Disease, qCLIF-SOFA = quick CLIF-SOFA, qSOFA = quick Sequential Organ Failure Assessment, SAPS II = Simplified Acute Physiology Score II, SIRS = systemic inflammatory response syndrome.

The primary endpoint was in-hospital mortality. The secondary endpoints included ICU mortality and the length of stay in ICU and hospital.

2.3. Statistical analysis

The Kolmogorov-Smirnov test and histograms were performed to test the normality of the distribution of quantitative variables. Normally distributed quantitative variables were presented as mean \pm SD while skewed variables were summarized as median and interquartile range (IQR). For comparison, χ^2 analysis or Fisher exact test were performed for categorical variables. Quantitative variables were compared using analysis of variance (ANOVA) or *t* test for normally distributed data and Kruskal-Wallis test or Mann-Whitney test for non-normally distributed data.

Predictive accuracy of each score was determined by comparing the area under the receiver operating characteristic (AUROC) curve. Clinical significance and net benefit were estimated by decision curve analysis. Decision curve analysis was first proposed in 2006 and has been used in studies published in

the *Lancet*^[18] and *Journal of Clinical Oncology*.^[19] Decision curve is a complement to ROC curve for a risk model. It is more informative than an ROC curve because the true- and false-positive fractions are displayed as functions of the risk threshold, whereas the risk threshold is suppressed in the ROC curve.^[20]

All analyses were performed using R 3.3.3 (<http://www.r-project.org/>), and a *P*-value less than .05 was considered statistically significant.

3. Results

3.1. Basic characteristics

A total of 1438 ICU patients with cirrhosis and suspected infection were included in the present study (Table 2). Of them, about 64% were male and nearly half aged over 60 years old. In the cohort, the median SAPS II was 56 and the in-hospital mortality was 32.0% and nearly half the patients (50.2%) admitted to ICU for hepatic encephalopathy. Among all the cirrhosis patients, most of them were with sepsis according to

Table 4**Primary and secondary endpoints based on the score of each scoring system.**

	Primary endpoint		Secondary endpoint	
	In-hospital mortality (n, %)	ICU mortality (n, %)	Hospital length of stay (d, IQR)	ICU length of stay (d, IQR)
SIRS criteria				
0 (n=13)	1 (7.7)	0 (0.0)	7.6 (3.8–20.8)	2.1 (1.4–3.1)
1 (n=87)	10 (11.5)	9 (10.3)	9.1 (5.4–19.9)	3.2 (1.9–6.2)
2 (n=305)	65 (21.3)	58 (19.0)	12.0 (6.8–20.4)	3.6 (2.0–6.4)
3 (n=571)	187 (32.7)	136 (23.8)	12.9 (7.0–21.5)	4.8 (2.2–10.0)
4 (n=462)	197 (42.6)	151 (32.7)	13.5 (6.9–25.2)	5.3 (2.9–12.1)
<i>P</i>	<.001	<.001	.020	<.001
qSOFA score				
0 (n=39)	4 (10.3)	3 (7.7)	10.2 (4.9–18.2)	2.8 (1.4–5.2)
1 (n=202)	33 (16.3)	19 (9.4)	9.6 (5.5–20.0)	3.0 (1.8–6.0)
2 (n=604)	178 (29.5)	129 (21.4)	12.1 (7.0–20.9)	4.0 (2.1–8.5)
3 (n=593)	245 (41.3)	203 (34.2)	13.9 (7.1–24.8)	6.2 (3.1–12.2)
<i>P</i>	<.001	<.001	.004	<.001
MELD score				
<10 (n=545)	122 (22.4)	90 (16.5)	11.9 (6.7–20.5)	4.8 (2.1–10.2)
10–19 (n=625)	210 (33.6)	162 (25.9)	13.1 (7.1–23.9)	4.2 (2.4–9.8)
20–29 (n=251)	120 (47.8)	96 (38.2)	13.0 (5.9–24.8)	4.3 (2.2–8.9)
>29 (n=17)	8 (47.1)	6 (35.3)	9.6 (5.9–17.3)	5.2 (3.6–8.5)
<i>P</i>	<.001	<.001	.158	.770
CLIF-SOFA score				
< 2 (n=15)	0 (0.0)	0 (0.0)	10.8 (4.6–19.0)	3.6 (1.1–7.7)
3–9 (n=735)	132 (18.0)	89 (12.1)	11.2 (6.5–18.9)	3.6 (1.9–7.8)
≥ 10 (n=688)	328 (47.7)	265 (38.5)	15.2 (7.4–26.8)	5.8 (2.9–11.8)
<i>P</i>	<.001	<.001	<.001	<.001
CLIF-C OF score				
6–9 (n=694)	106 (15.3)	75 (10.8)	10.9 (6.6–19.1)	3.6 (1.9–7.0)
10–14 (n=667)	298 (44.7)	225 (33.7)	14.9 (7.6–26.9)	5.9 (2.8–11.9)
15–18 (n=77)	56 (72.7)	54 (70.1)	14.2 (4.2–27.2)	6.2 (2.6–13.2)
<i>P</i>	<.001	<.001	<.001	<.001
qCLIF-SOFA score				
0 (n=121)	19 (15.7)	14 (11.6)	11.8 (5.5–18.1)	3.5 (2.0–7.0)
1 (n=226)	45 (19.9)	31 (13.7)	12.0 (6.1–20.4)	4.1 (2.0–8.6)
2 (n=386)	86 (22.3)	68 (17.6)	11.2 (6.5–19.9)	4.0 (2.0–8.8)
3 (n=312)	96 (30.8)	66 (21.2)	13.0 (7.2–22.7)	4.2 (2.7–9.6)
4 (n=253)	125 (49.4)	99 (39.1)	14.1 (7.5–26.1)	6.1 (2.7–11.7)
5 (n=140)	89 (63.6)	76 (54.3)	16.9 (6.7–31.6)	6.9 (3.0–12.8)
<i>P</i>	<.001	<.001	.001	<.001
SAPS II				
<10 (n=1)	0 (0.0)	0 (0.0)	4.3 (4.3–4.3)	2.9 (2.9–2.9)
10–19 (n=40)	2 (5.0)	2 (5.0)	8.2 (4.8–14.6)	2.1 (1.1–5.0)
20–29 (n=152)	13 (8.6)	7 (4.6)	9.9 (5.9–17.4)	3.0 (1.8–5.5)
30–39 (n=297)	45 (15.2)	28 (9.4)	10.2 (6.1–17.9)	3.1 (1.7–7.1)
40–49 (n=376)	94 (25.0)	60 (16.0)	14.9 (8.3–25.0)	5.0 (2.9–10.9)
50–59 (n=283)	124 (43.8)	93 (32.9)	13.9 (7.5–22.9)	6.0 (3.0–10.8)
60–69 (n=157)	81 (51.6)	69 (43.9)	17.8 (8.7–30.5)	8.0 (4.0–16.0)
70–79 (n=91)	67 (73.6)	62 (68.1)	12.2 (3.1–25.4)	5.4 (2.1–14.0)
80–89 (n=33)	27 (81.8)	27 (81.8)	6.7 (3.0–16.0)	3.6 (1.1–6.2)
90–99 (n=7)	6 (85.7)	5 (71.4)	3.3 (2.0–5.3)	3.3 (0.9–4.9)
≥100 (n=1)	1 (100.0)	1 (100.0)	1.0 (1.0–1.0)	1.0 (1.0–1.0)
<i>P</i>	<.001	<.001	<.001	<.001

CLIF-C OF = chronic liver failure-consortium organ failure, CLIF-SOFA = chronic liver failure-Sequential Organ Failure Assessment, IQR = interquartile range, MELD = Model for End-Stage Liver Disease, qCLIF-SOFA = quick chronic liver failure-Sequential Organ Failure Assessment, qSOFA = quick Sequential Organ Failure Assessment, SAPS II = Simplified Acute Physiology Score II, SIRS = systemic inflammatory response syndrome.

Sepsis-3 definition. Approximately 30% patients had associated diabetes mellitus, and 29% patients' alcohol abuse or dependence. With respect to laboratory data, white blood cell (WBC) count, creatinine, lactate, INR, partial thromboplastin time, total bilirubin, and aspartate aminotransferase were significantly higher for non-survivors than survivors ($P < .001$ for all).

The incidence of respiratory, bloodstream, and peritoneal infections was significantly increased among non-survivors ($P < .05$ for all). In this regard, causative agents for worse outcome were predominantly fungal infections ($P < .001$), for example, *Candida albicans* ($P = .013$) and *Aspergillus* ($P = .001$) (Table 3).

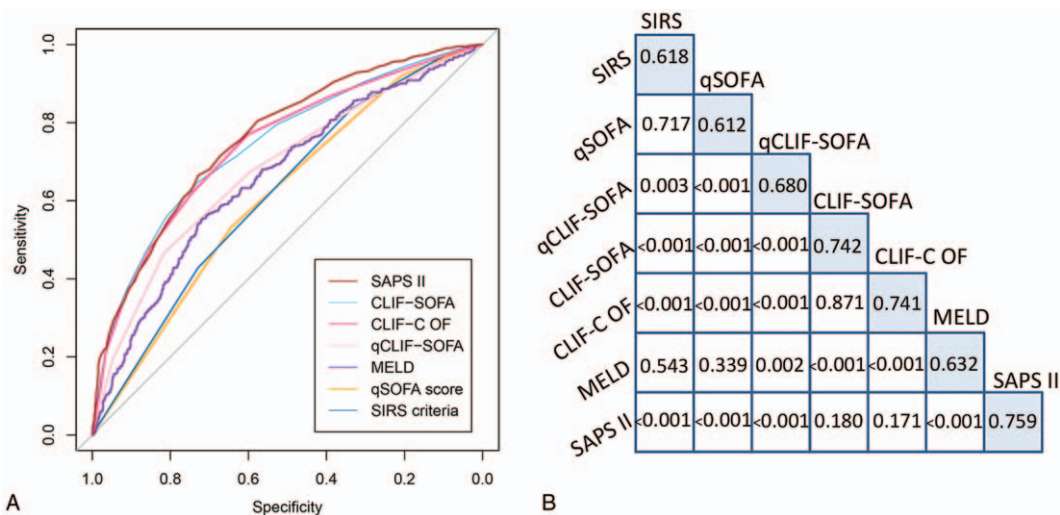


Figure 2. Receiver operating characteristic curve showing the comparison of AUROC of each score (A); the skyblue-shaded diagonal cells indicated the AUROC of each score and below the AUROC data cells are p values for comparisons between scores (B). CLIF-C OF = CLIF-consortium organ failure, CLIF-SOFA = chronic liver failure-SOFA, MELD = Model for End-Stage Liver Disease, qCLIF-SOFA = quick CLIF-SOFA, qSOFA = quick Sequential Organ Failure Assessment, SAPS II = Simplified Acute Physiology Score II, SIRS = systemic inflammatory response syndrome.

3.2. Outcomes of all patients

The distributions of each scoring system and their association with in-hospital mortality were shown in Figure 1. As expected, in-hospital and ICU mortality elevated as the score of each scoring system increased ($P < .05$ for all trends) (Table 4).

3.3. Prognostic accuracy of scoring systems

Predictive value of in-hospital mortality was significantly higher using CLIF-SOFA (AUROC, 0.742; 95% CI, 0.714–0.770), CLIF-C OF (AUROC, 0.741; 95% CI, 0.713–0.769), and SAPS II (AUROC, 0.759; 95% CI, 0.733–0.786) than SIRS criteria (AUROC, 0.618; 95% CI, 0.590–0.647), qSOFA (AUROC, 0.612; 95% CI, 0.584–0.640), MELD (AUROC, 0.632; 95% CI, 0.601–0.662), or qCLIF-SOFA (AUROC, 0.680; 95% CI, 0.650–0.710) ($P < .05$ for all) while CLIF-SOFA and CLIF-C OF were comparable ($P = .871$) (Fig. 2 and Table 5).

To facilitate the comparison of clinical significance among different scoring systems, decision curve analysis was performed. In present analysis, CLIF-SOFA, CLIF-C OF, and SAPS II based models had higher net benefit than SIRS, qSOFA, MELD, or qCLIF-SOFA based models across a wide range of decision

threshold probabilities (approximately 10%–70% risk of death) (Fig. 3 and Table 6). It seemed SIRS and qSOFA failed to produce net benefit while the probability of death exceeding more than 40%. However, at extremely high risks of death (> 70%), CLIF-SOFA and CLIF-C OF based models presented poor predictive value with negative net benefit (Fig. 3).

4. Discussion

Bacterial infections are responsible for the death of 30% to 50% cirrhotic patients.^[21] Thus, an optimal prognostic score helps ICU physicians to early identify those with high risk of death and to intervene timely. In this study, we compared the predictive value of five scoring systems on the prognosis of critically ill cirrhotic patients with suspected infection. We confirmed that CLIF-SOFA, CLIF-C OF, and SAPS II had superior prognostic value for in-hospital mortality than SIRS criteria, qSOFA, MELD, or qCLIF-SOFA. However, at extremely high risks of death, CLIF-SOFA and CLIF-C OF scores showed poor predictive ability.

Several scores had been developed to evaluate the severity of cirrhosis, mainly focusing on the loss of liver function and its

Table 5

Prognostic accuracy of SIRS criteria, qSOFA, MELD, CLIF-SOFA, CLIF-C OF, qCLIF-SOFA, and SAPS II among critically ill cirrhotic patients with suspected infection.

Scoring systems	AUROC (95% CI)	Best cut-point	Sensitivity	Specificity	Youden index
SIRS criteria	0.618 (0.590–0.647)	3	0.835	0.336	0.171
qSOFA score	0.612 (0.584–0.640)	3	0.533	0.644	0.177
MELD score	0.632 (0.601–0.662)	12.1	0.663	0.558	0.221
qCLIF-SOFA score	0.680 (0.650–0.710)	4	0.465	0.817	0.282
CLIF-SOFA score	0.742 (0.714–0.770)	11	0.646	0.732	0.378
CLIF-C OF score	0.741 (0.713–0.769)	10	0.770	0.601	0.371
SAPS II	0.759 (0.733–0.786)	50	0.665	0.728	0.393

CI = confidence interval, CLIF-C OF = chronic liver failure -consortium organ failure, CLIF-SOFA = chronic liver failure-Sequential Organ Failure Assessment, MELD = Model for End-Stage Liver Disease, qCLIF-SOFA = quick chronic liver failure-Sequential Organ Failure Assessment, qSOFA = quick Sequential Organ Failure Assessment, SAPS II = Simplified Acute Physiology Score II, SIRS = systemic inflammatory response syndrome.

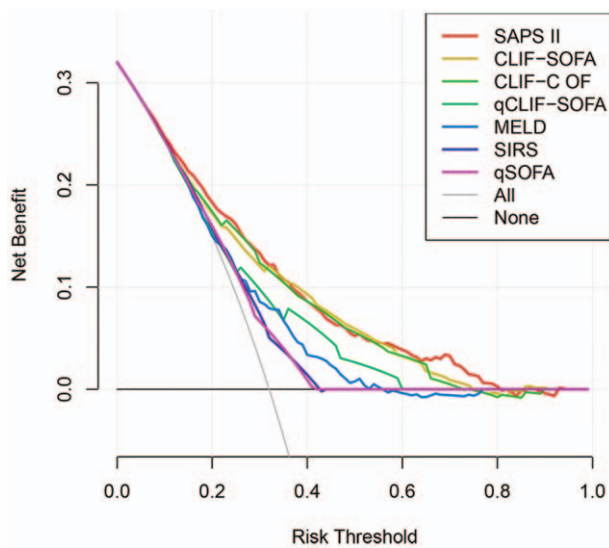


Figure 3. Decision curve depicting the benefit of each score based on the risk threshold. The gray curve depicts the net benefit of recommending the intervention to everyone in the cohort regardless of risk, while the black horizontal line indicates the net benefit (at net benefit of zero) of without intervention in the cohort. CLIF-C OF = CLIF-consortium organ failure, CLIF-SOFA = chronic liver failure-Sequential Organ Failure Assessment, MELD = Model for End-Stage Liver Disease, qCLIF-SOFA = quick CLIF-SOFA, qSOFA = quick Sequential Organ Failure Assessment, SAPS II = Simplified Acute Physiology Score II, SIRS = systemic inflammatory response syndrome.

complications. Previous studies proved that MELD score, had better accuracy in predicting 3-month mortality among patients with chronic liver disease and needing liver transplantation, compared with Child-Turcotte-Pugh (CTP) score, which was applied for the allocation of donor liver.^[16] However, a negative value of MELD scores may not be always favorable. Later, the Royal Free Hospital (RFH) score was proposed in an observational study including 312 cirrhotic patients in ICU and it proved similar discriminative ability compared with SOFA and CLIF-SOFA and better than MELD score.^[22] Another modified score for critically ill cirrhosis (MSCIC) including prothrombin time, bilirubin, vasopressin usage, HE and SIRS, was developed and demonstrated superior to CTP, MELD, Acute Physiology and Chronic Health Evaluation (APACHE) II scores, and CLIF-SOFA.^[23] However, the SIRS criteria within MSCIS were modified and it was also too complex to calculate.

The prognostic accuracy of liver-specific scoring systems were validated and favored by present study. CLIF-SOFA, a modified SOFA score, was customized for chronic hepatic disease including more hepatic components compared with SOFA. CLIF-C OF was a simplified version of CLIF-SOFA and presented similar performance with CLIF-SOFA in the previous study,^[24] which was consistent with our results. Bilirubin, HE, and INR, included in CLIF-SOFA and CLIF-C OF, were significantly associated with the prognosis of cirrhotic patients and were recommended to be used as predictor of outcomes.^[25] In this sense, CLIF-SOFA and CLIF-C OF were more appropriate for patients with chronic disease than SIRS or qSOFA. A large

Table 6

Net benefit, true- and false-positive rate of using SIRS, qSOFA, MELD, CLIF-SOFA, CLIF-C OF, qCLIF-SOFA, and SAPS II on different decision thresholds.

Parameters (% , 95% CI)	Thresholds (%)				
	20	25	30	35	40
SIRS criteria					
FPR	90.9 (64.1–92.7)	66.4 (63.6–69.7)	66.4 (25.7–69.5)	27.1 (24.4–30.0)	27.1 (0.0–30.0)
TPR	97.6 (83.6–98.7)	83.5 (80.0–87.3)	83.5 (41.7–86.7)	42.8 (38.2–47.1)	42.8 (0.0–47.1)
NB	15.8 (13.0–18.4)	11.7 (8.8–14.3)	7.4 (4.0–10.2)	3.8 (1.5–5.9)	1.4 (-0.7–3.7)
qSOFA score					
FPR	79.1 (76.6–97.2)	79.1 (76.4–81.7)	35.6 (32.9–80.2)	35.6 (32.8–38.5)	35.6 (0.0–38.1)
TPR	92.0 (90.0–99.4)	92.0 (88.7–94.5)	53.3 (49.1–92.1)	53.3 (48.9–58.2)	53.3 (0.0–58.1)
NB	16.0 (13.2–19.0)	11.5 (8.4–14.5)	6.7 (4.4–9.6)	4.0 (1.5–7.0)	0.9 (-0.6–4.0)
qCLIF-SOFA score					
FPR	71.1 (68.1–88.9)	71.1 (37.7–73.3)	40.4 (37.4–43.2)	40.4 (16.6–42.3)	18.3 (15.9–20.7)
TPR	86.1 (82.8–94.7)	86.1 (65.0–87.9)	67.4 (62.5–71.6)	67.4 (42.6–71.0)	46.5 (41.9–51.0)
NB	15.5 (12.6–17.9)	11.4 (9.6–14.6)	9.8 (7.3–12.4)	6.8 (5.6–9.6)	6.6 (4.4–8.9)
MELD score					
FPR	90.3 (79.5–99.6)	66.7 (53.5–84.1)	43.7 (34.5–56.9)	27.2 (20.3–35.5)	16.6 (11.5–22.2)
TPR	94.3 (88.8–100.0)	82.0 (72.9–89.0)	65.2 (54.4–72.2)	45.4 (34.3–56.3)	30.2 (19.7–40.2)
NB	14.8 (11.6–18.2)	11.1 (8.1–13.6)	8.1 (5.3–10.3)	4.6 (2.2–7.4)	2.2 (0.5–4.4)
CLIF-SOFA score					
FPR	57.6 (46.3–70.5)	47.0 (35.0–50.4)	36.8 (25.2–39.5)	26.8 (18.2–29.1)	18.9 (13.1–21.1)
TPR	84.3 (80.8–90.1)	79.3 (71.6–82.7)	71.3 (63.2–75.3)	64.6 (53.8–68.8)	55.9 (45.1–61.0)
NB	17.2 (14.7–20.0)	14.7 (12.3–17.6)	12.1 (10.1–15.1)	10.8 (8.6–13.7)	9.3 (6.9–11.9)
CLIF-C OF score					
FPR	61.3 (56.2–64.3)	39.9 (36.9–59.2)	25.6 (23.4–42.4)	25.6 (22.5–28.4)	14.9 (12.7–25.7)
TPR	87.0 (82.8–90.0)	77.0 (73.6–84.3)	62.0 (59.0–79.2)	62.0 (56.7–66.1)	48.0 (43.8–63.5)
NB	17.4 (14.8–20.4)	15.6 (13.2–18.4)	12.4 (10.0–15.9)	10.5 (7.9–13.0)	8.6 (6.4–10.8)
SAPS II					
FPR	56.0 (47.3–62.9)	42.3 (36.2–49.0)	32.8 (26.9–38.1)	25.4 (20.5–28.8)	18.0 (15.4–22.0)
TPR	87.0 (83.0–90.0)	80.4 (74.0–83.4)	71.5 (65.0–75.8)	62.6 (55.8–68.2)	52.4 (46.1–59.8)
NB	18.3 (15.5–21.0)	16.1 (13.1–18.6)	13.3 (10.6–15.9)	10.7 (8.3–13.7)	8.6 (6.2–11.4)

CI = Confidence Interval, CLIF-C OF = Chronic Liver Failure -Consortium Organ Failure, CLIF-SOFA = Chronic Liver Failure-Sequential Organ Failure Assessment, FPR = false positive rate, MELD = Model for End-Stage Liver Disease, NB = net benefit, qCLIF-SOFA = quick Chronic Liver Failure-Sequential Organ Failure Assessment, qSOFA = quick Sequential Organ Failure Assessment, SAPS II = Simplified Acute Physiology Score II, SIRS = systemic inflammatory response syndrome, TPR = true positive rate.

research had previously proved that SIRS was not a perfect score for predicting ICU mortality and had poor ability to define a transition point in risk of death.^[26] Some explained SIRS criteria were too sensitive and not specific enough that the severity of illness was overestimated.^[27] As our analysis indicated, SIRS showed nearly no prognostic value when risk probability surpassed 40%. Similar to SIRS criteria, qSOFA, with no laboratory measurements and originally developed to be used at bedside, also failed to predict and discriminate patients with high risk. Though showing great prognostic value among patients with suspected infection outside of the ICU,^[7,28] qSOFA may be inappropriate for those severe patients. Since lactate had long been regarded as a predictor for sepsis or septic shock, previous studies found that when adding lactate levels to qSOFA, the predictive value turned significantly elevated.^[29] To improve the predictive validity of qSOFA, some authors even recommended replacing mention status with lactate levels for mention alternation was potentially biased by physician's judgment and was thus difficult to validate.^[28] Nevertheless, this may result in concern that "quick" SOFA will become not that quick. Inspired by qSOFA, some authors argued that CLIF-SOFA was too time-consuming and proposed qCLIF-SOFA.^[12] Compared with CLIF-SOFA, HE grade was excluded and subscores of each component was just 0 or 1. Although they found simpler qCLIF-SOFA possessed comparable accuracy for prognostic prediction of 28- and 90-day mortality compared with CLIF-SOFA, the results were not verified in population out of ICU, such as emergency department. Moreover, risk factors and severe complication such as HE were not taken into account, which may result in missed diagnosis. It was worth mentioning that 2 of 5 components within qCLIF-SOFA were circulation-related (mean arterial pressure and vasopressin application) and it may cause some overlap and underestimate the illness of liver itself. However, as a classical severity score in ICU,^[17] SAPS II remained a better predictive value than MELD, which was consistent with a recent observational study.^[23]

Although we supported the use of CLIF-SOFA and CLIF-C OF as screening tools for the in-hospital mortality of cirrhotic patients with suspected infection, they both showed poor prognostic value for patients with high risk of death (above mortality of 70% in present analysis showed in Fig. 3). This probably explained why the AUROC of CLIF-SOFA and CLIF-C OF were marginally smaller than those reported in previous studies.^[23,30,31] Jalan et al^[11] suggested adding age and log-transformed white blood cell count to CLIF-C OF to produce a specific prognostic score for acute-on-chronic liver failure (ACLF) named CLIF Consortium ACLF score (CLIF-C ACLFs). The CLIF-C ACLFs showed good discrimination ability at ACLF diagnosis and proved to have potential use on stratifying the risk of death in ACLF patients. Recently, authors discovered that CLIF-SOFA presented an improvement of discriminative ability when incorporate temperature into original CLIF-SOFA.^[32] It indicated that inflammatory factor had great impact weight on mortality and could complement the prognostic accuracy of CLIF-SOFA or CLIF-C OF.

There are several limitations for the present study. First, as a retrospective cohort research, the study may have a hereditary limitation. For example, we could not avoid the heterogeneity because the cohort included cirrhotic patients of various etiologies. Second, HE grade was roughly defined according Glasgow Coma Scale for the data on altered mentation, nervous reflex was limited and some other items such as electroencephalogram were not available. Third, the study was based on a single-

center database, which may result in concerns on the generalization of the conclusions and the selection bias.

In summary, although there are a lot of discussion and controversies on the predictive value of all kinds of prognostic scores, CLIF-SOFA, CLIF-C OF, and SAPS II scoring systems are optimal tools to predict the prognosis of critically ill cirrhotic patients with suspected infection up to now. However, large multicenter prospective studies are needed to improve the predictive ability of scoring systems.

Author contributions

PL and J-CZ designed the study, extracted, and analyzed the data and drafted the article. PL, S-JW, Q-CS, YF, TC, Y-XY, K-HP, LL, J-CZ, and Y-SY participated in the study and reviewed the article for critical content.

Conceptualization: Jian-Cang Zhou.

Data curation: Ying Fu.

Formal analysis: Peng Lan.

Investigation: Qing-Ye Xu.

Methodology: Peng Lan, Yun-Xian Yu.

Project administration: Jian-Cang Zhou.

Resources: Shuo-Jia Wang, Qiu-Cheng Shi.

Software: Peng Lan.

Supervision: Jian-Cang Zhou.

Validation: Tao Chen, Ling Lin.

Visualization: Peng Lan.

Writing – original draft: Peng Lan, Kong-Han Pan.

Writing – review & editing: Jian-Cang Zhou, Yun-Song Yu.

References

- [1] Gustot T, Fernandez J, Szabo G, et al. Sepsis in alcohol-related liver disease. *J Hepatol* 2017;67:1031–50.
- [2] Fernandez J, Acevedo J, Castro M, et al. Prevalence and risk factors of infections by multiresistant bacteria in cirrhosis: a prospective study. *Hepatology* 2012;55:1551–61.
- [3] Noor MT, Manoria P. Immune dysfunction in cirrhosis. *J Clin Transl Hepatol* 2017;5:50–8.
- [4] Winters BD, Eberlein M, Leung J, et al. Long-term mortality and quality of life in sepsis: a systematic review. *Crit Care Med* 2010;38:1276–83.
- [5] Singer M, Deutschman CS, Seymour CW, et al. The Third International Consensus Definitions for Sepsis and Septic Shock (Sepsis-3). *JAMA* 2016;315:801–10.
- [6] Raith EP, Udy AA, Bailey M, et al. Prognostic accuracy of the SOFA score, SIRS criteria, and qSOFA score for in-hospital mortality among adults with suspected infection admitted to the intensive care unit. *JAMA* 2017;317:290–300.
- [7] Freund Y, Lemachatti N, Krastinova E, et al. Prognostic accuracy of sepsis-3 criteria for in-hospital mortality among patients with suspected infection presenting to the emergency department. *JAMA* 2017;317:301–8.
- [8] Cheng B, Li Z, Wang J, et al. Comparison of the performance between sepsis-1 and sepsis-3 in ICUs in China: a retrospective multicenter study. *Shock* 2017;48:301–6.
- [9] Malinchoc M, Kamath PS, Gordon FD, et al. A model to predict poor survival in patients undergoing transjugular intrahepatic portosystemic shunts. *Hepatology* 2000;31:864–71.
- [10] Moreau R, Jalan R, Gines P, et al. Acute-on-chronic liver failure is a distinct syndrome that develops in patients with acute decompensation of cirrhosis. *Gastroenterology* 2013;144:1426–37. 1437 e1–9.
- [11] Jalan R, Saliba F, Pavesi M, et al. Development and validation of a prognostic score to predict mortality in patients with acute-on-chronic liver failure. *J Hepatol* 2014;61:1038–47.
- [12] Zhou XD, Zhang JY, Liu WY, et al. Quick chronic liver failure-sequential organ failure assessment: an easy-to-use scoring model for predicting mortality risk in critically ill cirrhosis patients. *Eur J Gastroenterol Hepatol* 2017;29:698–705.
- [13] Zhang Z, Ji X. Quadratic function between arterial partial oxygen pressure and mortality risk in sepsis patients: an interaction with simplified acute physiology score. *Sci Rep* 2016;6:35133.

- [14] Hassanein T, Blei AT, Perry W, et al. Performance of the hepatic encephalopathy scoring algorithm in a clinical trial of patients with cirrhosis and severe hepatic encephalopathy. *Am J Gastroenterol* 2009;104:1392–400.
- [15] Liotta EM, Lizza BD, Romanova AL, et al. 23.4% Saline decreases brain tissue volume in severe hepatic encephalopathy as assessed by a quantitative CT marker. *Crit Care Med* 2016;44:171–9.
- [16] Le Gall JR, Lemeshow S, Saulnier F. A new Simplified Acute Physiology Score (SAPS II) based on a European/North American multicenter study. *JAMA* 1993;270:2957–63.
- [17] Wiesner R, Edwards E, Freeman R, et al. Model for end-stage liver disease (MELD) and allocation of donor livers. *Gastroenterology* 2003;124:91–6.
- [18] Hijazi Z, Oldgren J, Lindbäck J, et al. The novel biomarker-based ABC (age, biomarkers, clinical history)-bleeding risk score for patients with atrial fibrillation: a derivation and validation study. *Lancet* 2016;387:2302–11.
- [19] Den RB, Yousefi K, Trabulsi EJ, et al. Genomic classifier identifies men with adverse pathology after radical prostatectomy who benefit from adjuvant radiation therapy. *J Clin Oncol* 2015;33:944–51.
- [20] Kerr KF, Brown MD, Zhu K, et al. Assessing the clinical impact of risk prediction models with decision curves: guidance for correct interpretation and appropriate use. *J Clin Oncol* 2016;34:2534–40.
- [21] Tandon P, Garcia-Tsao G. Bacterial infections, sepsis, and multiorgan failure in cirrhosis. *Semin Liver Dis* 2008;28:26–42.
- [22] Theodoridou E, Pieri G, Mohammad AO, et al. The Royal Free Hospital score: a calibrated prognostic model for patients with cirrhosis admitted to intensive care unit. Comparison with current models and CLIF-SOFA score. *Am J Gastroenterol* 2014;109:554–62.
- [23] Bao Q, Wang B, Yu L, et al. A modified prognostic score for critically ill patients with cirrhosis: an observational study. *J Gastroenterol Hepatol* 2016;31:450–8.
- [24] Arroyo V, Moreau R, Jalan R, et al. Acute-on-chronic liver failure: a new syndrome that will re-classify cirrhosis. *J Hepatol* 2015;62:S131–143.
- [25] D’Amico G, Garcia-Tsao G, Pagliaro L. Natural history and prognostic indicators of survival in cirrhosis: a systematic review of 118 studies. *J Hepatol* 2006;44:217–31.
- [26] Kaukonen KM, Bailey M, Pilcher D, et al. Systemic inflammatory response syndrome criteria in defining severe sepsis. *N Engl J Med* 2015;372:1629–38.
- [27] Vincent JL, Martin GS, Levy MM. qSOFA does not replace SIRS in the definition of sepsis. *Crit Care* 2016;20:210.
- [28] Seymour CW, Liu VX, Iwashyna TJ, et al. Assessment of clinical criteria for sepsis: for the Third International Consensus Definitions for Sepsis and Septic Shock (Sepsis-3). *JAMA* 2016;315:762–74.
- [29] Escobar GJ, Gardner MN, Greene JD, et al. Risk-adjusting hospital mortality using a comprehensive electronic record in an integrated health care delivery system. *Med Care* 2013;51:446–53.
- [30] Sy E, Ronco JJ, Searle R, et al. Prognostication of critically ill patients with acute-on-chronic liver failure using the Chronic Liver Failure-Sequential Organ Failure Assessment: a Canadian retrospective study. *J Crit Care* 2016;36:234–9.
- [31] Li N, Huang C, Yu K-K, et al. Validation of prognostic scores to predict short-term mortality in patients with HBV-related acute-on-chronic liver failure. *Medicine* 2017;96:e6802.
- [32] Zhou XD, Chen QF, Wang ZX, et al. Acute circulatory failure-chronic liver failure-sequential organ failure assessment score: a novel scoring model for mortality risk prediction in critically ill cirrhotic patients with acute circulatory failure. *Eur J Gastroenterol Hepatol* 2017;29:464–71.