



# Pair-matched patient-reported quality of life and early oncological control following focal irreversible electroporation versus robot-assisted radical prostatectomy

Matthijs J. Scheltema<sup>1,2,3</sup> · John I. Chang<sup>1,2</sup> · Maret Böhm<sup>1</sup> · Willemien van den Bos<sup>1,2</sup> · Alexandar Blazeovski<sup>1,2</sup> · Ilan Gielchinsky<sup>1,2</sup> · Anton M. F. Kalsbeek<sup>1</sup> · Pim J. van Leeuwen<sup>4</sup> · Tuan V. Nguyen<sup>1,5,6</sup> · Theo M. de Reijke<sup>3</sup> · Amila R. Siriwardana<sup>1,2,5</sup> · James E. Thompson<sup>1,2</sup> · Jean J. de la Rosette<sup>3</sup> · Phillip D. Stricker<sup>2</sup>

Received: 30 August 2017 / Accepted: 24 March 2018 / Published online: 28 March 2018  
© The Author(s) 2018

## Abstract

**Purpose** The design, conduct and completion of randomized trials for curative prostate cancer (PCa) treatments are challenging. To evaluate the effect of robot-assisted radical prostatectomy (RARP) versus focal irreversible electroporation (IRE) on patient-reported quality of life (QoL) and early oncological control using propensity-scored matching.

**Methods** Patients with T1c–cT2b significant PCa (high-volume ISUP 1 or any 2/3) who received unifocal IRE were pair-matched to patients who received nerve-sparing RARP. Patient-reported outcomes were prospectively assessed using the Expanded Prostate Cancer Index Composite (EPIC), AUA symptom score and Short Form of Health Survey (SF-12) physical and mental components. Oncological failure was defined as biochemical recurrence (RARP) or positive follow-up biopsies (IRE). Generalized mixed-effect models were used to compare IRE and RARP.

**Results** 50 IRE patients were matched to 50 RARP patients by propensity score. IRE was significantly superior to RARP in preserving pad-free continence (UC) and erections sufficient for intercourse (ESI). The absolute differences were 44, 21, 13, 14% for UC and 32, 46, 27, 22% for ESI at 1.5, 3, 6, and 12 months, respectively. The EPIC summary scores showed no statistically significant differences. Urinary symptoms were reduced for IRE and RARP patients at 12 months, although IRE patient initially had more complaints. IRE patients experienced more early oncological failure than RARP patients.

**Conclusions** These data demonstrated the superior preservation of UC and ESI with IRE compared to RARP up to 12 months after treatment. Long-term oncological data are warranted to provide ultimate proof for or against focal therapy.

**Keywords** Prostate cancer · Focal therapy · Irreversible electroporation · Radical prostatectomy · Robotic

**Electronic supplementary material** The online version of this article (<https://doi.org/10.1007/s00345-018-2281-z>) contains supplementary material, which is available to authorized users.

✉ Matthijs J. Scheltema  
m.scheltema@garvan.org.au

<sup>1</sup> Garvan Institute of Medical Research & The Kinghorn Cancer Centre, 370 Victoria Street, Sydney, NSW 2010, Australia

<sup>2</sup> St Vincent's Prostate Cancer Centre, Sydney, NSW, Australia

<sup>3</sup> Academic Medical Center, University of Amsterdam, Amsterdam, The Netherlands

<sup>4</sup> Erasmus Medical Center, University of Rotterdam, Rotterdam, The Netherlands

<sup>5</sup> UNSW, Sydney, NSW, Australia

<sup>6</sup> School of Biomedical Engineering, University of Technology, Sydney, Australia

## Introduction

Until recently no accepted curative prostate cancer (PCa) treatment had been compared in a randomized controlled trial (RCT) [1, 2]. Eight comparative RCTs were prematurely closed due to the lack of physician equipoise or patient preference [3]. The ProtecT trial was randomized between radical prostatectomy (RP), radiotherapy and active monitoring [1]. The trial recruited patients from 1999 to 2009, total estimated costs were £35 million [3]. The 10-year outcomes showed no differences in PCa-specific mortality and the patient-reported outcomes elucidated that RP had the greatest negative effect on erections sufficient for intercourse (ESI) and urinary continence (UC) [1, 4]. However, one may argue that the landscape of PCa has drastically changed since. The majority (77%) of the included patients

harboured Gleason 3 + 3 = 6 on biopsy, who nowadays are most likely to have been actively monitored using improved surveillance protocols [2]. Moreover, technological advancements and experience improved the preservation of genitourinary function following RP [5–7].

Chen et al. published an alternative method to compare prospectively acquired patient-reported quality of life (QoL) outcomes [8]. These authors compared RP, radiotherapy, brachytherapy and active surveillance using propensity score-weighted matched cohorts. Baseline characteristics were matched, whilst the cohorts had identical follow-up schemes and methods. A total of 1141 men (treated from 2011 to 2013) were enrolled in this analysis, thus providing up-to-date comparative information on QoL following different PCa treatments. This design may also be used to position new PCa treatments to the guidelines.

Focal therapy has been introduced as treatment option for patients with unifocal low-, to intermediate-risk PCa [9]. Adoption of this new treatment concept has been slow, despite increasing experience derived from phase 1–2 trials, including more than 3000 patients treated and a maximum median follow-up of 61 months [3, 9]. The lack of comparative RCTs has been advocated to be one of the main reasons. A specific PCa RCT consensus group proposed that cohort-embedded RCTs with medium-term outcomes (3–5 years) might provide proof for this concept [3].

We propose an alternative approach to compare focal therapy with current PCa treatments, by propensity score pair-matched analysis of cohorts that followed an identical follow-up scheme and evaluation. Consensus statements on focal therapy patient criteria and selection methods should be used to identify a cohort to match to an accepted PCa treatment [10, 11]. International registries may provide large cohorts to compare the long-term oncological outcomes.

In this study, we aimed to illustrate the potential of this design. Focal therapy was performed using irreversible electroporation (IRE) [12]. IRE patients, that were eligible for treatment according to the consensus guidelines [10, 11], were propensity-score matched to robot-assisted RP (RARP) patients. We evaluated the patient-reported QoL outcomes and early oncological control following focal IRE versus RARP by prospective collection of patient-reported questionnaires using identical follow-up schemes.

## Materials and methods

### Study design and patients

Patients receiving single-ablative unifocal IRE ( $n = 50$ ) following the consensus guidelines (February 2013–July 2016) were propensity score pair-matched to patients who received nerve-sparing RARP ( $n = 325$ , April 2013–July

2016) [10, 11]. Eligibility criteria for both IRE and RARP patients included patients with clinical stage T1c–T2b, low-, to intermediate-risk PCa (ISUP 1–3), written informed consent for QoL evaluation, minimum of 6 months follow-up and completion of all baseline questionnaires and matching criteria (Supplementary Fig. 1). Extra eligibility criteria for RARP patients were: (1) treatment after the completion of the single-surgeons learning curve [5], (2) all procedures must be nerve-sparing. Early oncological control and prospectively collected patient-reported QoL outcomes were evaluated up to 12 months following treatment.

### Study procedures

#### Irreversible electroporation

Pre-treatment tumour localization and treatment planning were performed with transrectal or transperineal biopsies, guided by pre-biopsy mpMRI. IRE was performed by a single-surgeon (PS), including his initial learning curve and was executed following the methods as described by Ting et al. [13]. A transurethral indwelling catheter was placed to drain the bladder before treatment. The procedure was performed as a day stay procedure. The transurethral indwelling catheter was removed within 2–5 days after treatment.

#### Robot-assisted radical prostatectomy

RARP was performed by a single-surgeon (PS) after completion of his initial learning curve (> 3000 prior open RP and 1500 RARPs) [5]. The techniques described by Patel et al. [14] were followed and the Da-Vinci Xi surgical system with 6 access ports was used (Intuitive Surgical Sunnyvale®, CA, USA). Specifically, after the bladder neck and seminal vesicles dissection, a combined antegrade/retrograde non-thermal nerve-sparing procedure was performed. Accessory pudendal arteries were preserved. The dorsal venous plexus was dissected using electro-cautery and sutured. A suspensory suture to the symphysis pubis was placed after removal of the prostate. A two-layer Rocco stitch was used to support the posterior bladder anastomosis [15]. An anterior bladder reconstruction was performed if needed. Extended lymph node dissection was performed in cases with > 5% chance of lymph node metastasis according to the Briganti nomogram [16].

#### Complication, quality of life and early oncological control evaluation

Early surgical complications were classified as specified by the Clavien–Dindo classification [17]. Patient-reported QoL outcomes were acquired at baseline, 1.5, 3, 6, and 12 months using the Expanded Prostate Cancer Index Composite

(EPIC) [18], AUA symptom score [19], Short Form Health Survey (SF-12) with Physical and Mental Component Summary [20]. Clinical data managers collected the QoL questionnaires to decrease any potential impact of treating physicians. Transperineal biopsies were performed 12 months following IRE to determine early oncological control. For RARP and IRE, serial PSA testing was utilized.

## Analysis

### Quality of life comparison

Primary analysis was performed on UC and ESI as these measures of genito-urinary function are most commonly used to report genito-urinary function outcomes following PCa treatments [6, 7, 21]. UC was defined as pad-free continence. ESI was defined as erections sufficient for intercourse with or without the use of medication. Rates of UC and ESI were compared between IRE and RARP up to 12 months, with absolute risk differences and at 12 months the number needed to treat (NNT) was calculated to prevent 1 man to develop UC or ESI. Secondary analysis included summary score differences on the questionnaires over 12 months (EPIC urinary, bowel and sexual domain, AUA symptom score, and SF-12 Physical and Mental survey). Oncological failure rates for IRE were defined by positive follow-up biopsies at 12 months with significant PCa (high-volume ISUP 1 or any 2/3). For RARP, this was defined as biochemical failure (PSA  $\geq 0.2$   $\mu\text{g/L}$ ) or the need for adjuvant radiotherapy within 12 months.

### Matching criteria and statistical analysis

Matching was performed on age, pre-treatment PSA, ISUP score on biopsy, number of positive cores, baseline questionnaires scores and rates of pad-free UC and ESI. Propensity score matching was performed for 1:1 nearest neighbour identification. Missing data on follow-up questionnaires were not imputed and data with  $\geq 1$  follow-up time point were included in the comparative analysis. We employed mixed-effects models to evaluate the effect of treatment (IRE and RARP) on QoL. In this model, the outcomes (i.e., dependent variables) were EPIC urinary, sexual and bowel score, SF-12 physical and mental score, AUA score and rates of ESI and pad-free UC. Prior to the analysis, all outcome variables were re-scaled to have zero mean and unit variance (i.e.,  $z$ -score). In this model, the standardized outcome for each individual  $i$  at a time point  $j$ , denoted by  $Y_{ij}$ , is modelled as a linear function of time:  $Y_{ij} = \pi_{0j} + \pi_{1j} \times \text{time}_{ij} + r_{ij}$ , in which  $\pi_{0j}$  and  $\pi_{1j}$  represent the estimated baseline and rate of change for an individual, and  $r_{ij}$  is within-subject random error, which is assumed to follow a normal distribution with mean 0 and variance of  $\sigma^2$ . In the second level, the collection

of  $\pi_{0j}$  and  $\pi_{1j}$  was then modelled as a linear function of treatment  $x_j$ , so that the final model is:  $Y_{ij} = [b_{00} + b_{10} \times \text{time}_{ij} + b_{01} \times X_j + b_{11} \times \text{time}_{ij} \times X_j] + [u_{0j} + u_{1j} \times \text{time}_{ij} + r_{ij}]$ , where the terms  $u_{0j}$  and  $u_{1j}$  represent between-subject variance in the baseline estimates and between-subject variance in the rates of change, respectively. The Mann–Whitney  $U$  and Chi square tests were performed to assess matching characteristics. Data analysis was conducted using R including package “lme4” [22, 23].

## Results

### Patient and matching characteristics

Fifty patients treated with IRE (February 2013–July 2016) were matched to the nearest individual RARP neighbour (April 2013–July 2016) without significant matching criteria and patient characteristic differences (Table 1). Bilateral nerve-sparing RARP was performed in 94% ( $n = 47/50$ ) of the patients. Three patients received unilateral nerve-preservation. All patients completed their baseline questionnaires. At 1.5, 3, 6, and 12 months, the response rate was 93, 97, 94 and 71% of the 100 patients, respectively. In Supplementary Fig. 1, the flowchart of the inclusion and matching is displayed.

### Early surgical complications

Early surgical complications for RARP included a total of nine Clavien–Dindo 1 complications and five Clavien–Dindo 2 complications (urinary retention  $n = 5$ , urinary tract infection  $n = 4$ , postoperative anemia requiring blood transfusion  $n = 1$ ).

Eleven Clavien–Dindo 1 (mild haematuria, urgency and postoperative pain) and seven Clavien–Dindo 2 (urinary tract infection and severe postoperative pain related to the indwelling catheter) complications were reported for IRE.

### Patient-reported quality of life outcomes

Baseline and absolute changes from baseline for each QoL measure, stratified by treatment group, are shown in supplementary Table 1. The results of mixed-effects model analysis are shown in Supplementary Table 2. Figure 1 illustrates the treatment outcomes on the rates of UC and ESI and Supplementary Fig. 2 the mixed-effect models on the patient-reported QoL results.

### Urinary domain

IRE was superior to RARP in preserving pad-free UC during the first 12 months of follow-up ( $p < 0.01$ , Supplementary

**Table 1** Patient and matching characteristics (median, IQR)

Variable	IRE	RARP	Match ( <i>p</i> value)
Age (years)	67 (62–73)	67 (64–71)	Yes ( <i>p</i> =0.953)
PSA (µg/L)	5.9 (3.3–7.3)	6.3 (4.3–7.7)	Yes ( <i>p</i> =0.229)
Prostate volume (cc)	35 (30–50)	37.5 (27–50)	
Clinical stage			
T1c	37	34	
T2a	12	14	
T2b	1	2	
Biopsy (ISUP)			
1	8	9	
2	33	31	
3	9	10	
Average ISUP	2 (2–2)	2 (2–2)	Yes ( <i>p</i> =0.997)
# of cores taken	22 (10–29)	19 (14–31)	
# of positive cores	4.0 (2.8–5.3)	4.0 (3.0–7.0)	Yes ( <i>p</i> =0.189)
Baseline function			
EPIC urinary	92 (79–98)	91 (83–96)	Yes ( <i>p</i> =0.920)
EPIC sexual	65 (48–81)	69 (41–79)	Yes ( <i>p</i> =0.820)
EPIC bowel	96 (93–100)	96 (93–98)	Yes ( <i>p</i> =0.756)
SF-12 physical	56 (52–57)	55 (52–58)	Yes ( <i>p</i> =0.588)
SF-12 mental	57 (50–58)	56 (51–59)	Yes ( <i>p</i> =0.807)
AUA	6 (3–13)	7 (3–11)	Yes ( <i>p</i> =0.978)
Erections sufficient for intercourse	69% (34/49)	68% (34/50)	Yes ( <i>p</i> =0.882)
Pad-free continence rate	98% (49/50)	98% (49/50)	Yes ( <i>p</i> =1.000)

Patient characteristics are shown in median and interquartile ranges (in brackets) or in frequency. Baseline characteristics were statistically compared and a match was defined as non-statistical differences ( $p > 0.05$ , preferably close to  $p = 1$ )

Table 2). The absolute risk reduction was 44, 21, 13 and 14% at 1.5, 3, 6, and 12 months, respectively. The number needed to treat (NNT) to preserve the UC of 1 man at 12 months was 8.3 IREs. RARP and IRE were associated with reduced urinary symptoms following treatment (AUA); however, IRE patients initially had more complaints without statistically significant difference (Supplementary Tables 1, 2). For EPIC urinary, there was a significant reduction at 6 weeks, but the scores then regressed back towards baseline levels at 3 months without significant differences between RARP and IRE or over the 12-month period (Supplementary Tables 1, 2).

### Sexual function

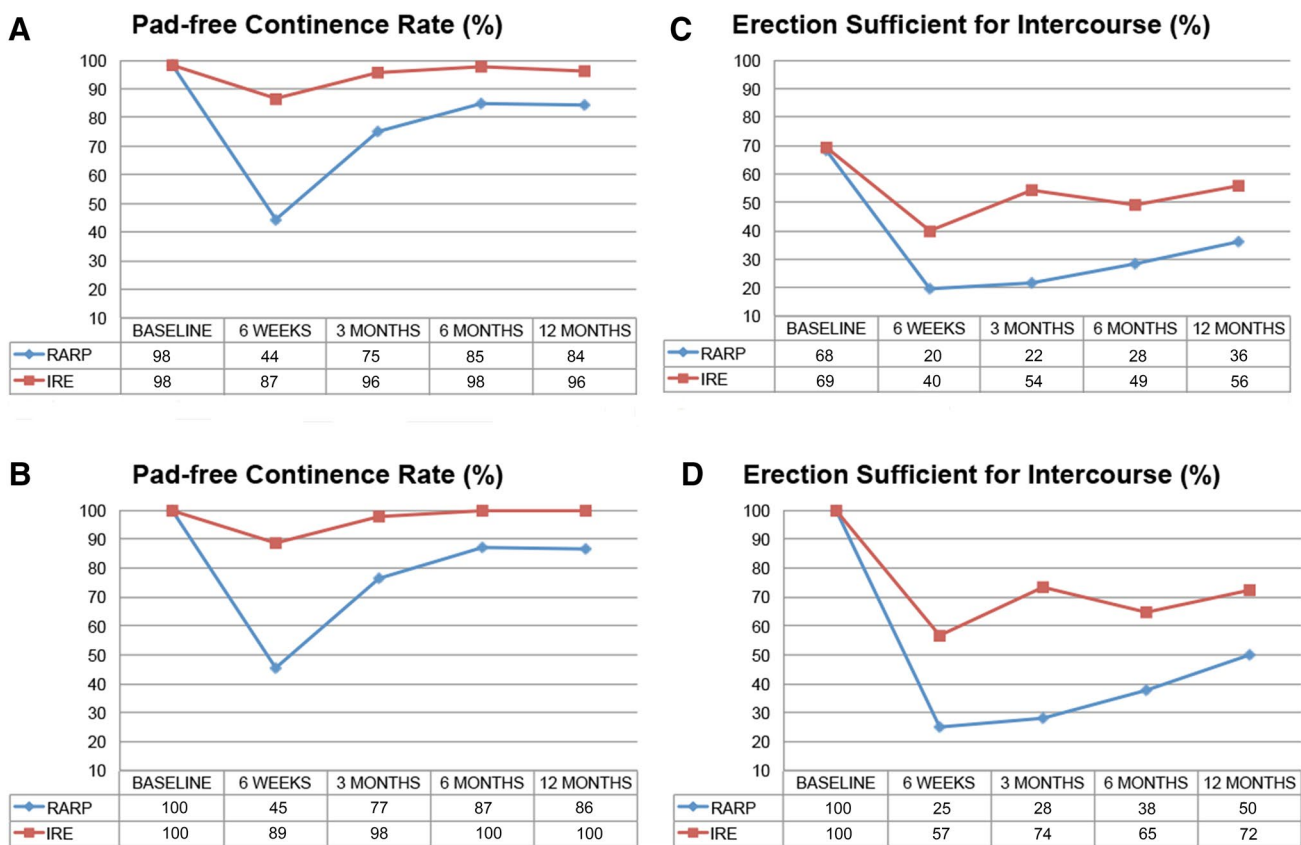
IRE was superior to RARP in preserving ESI ( $p < 0.05$ , Supplementary Table 2) during the first 12 months of follow-up. The absolute risk reduction to develop erectile dysfunction was 32, 46, 27 and 22% at 1.5, 3, 6, and 12 months, respectively. The NNT to preserve the ESI of 1 man at 12 months was 4.5 IREs. EPIC sexual summary scores were significantly reduced for both IRE and RARP, with no differences between the two treatments (Supplementary Tables 1, 2).

### Remaining questionnaires

No differences were found on the EPIC bowel domain and SF-12 Mental survey during the first 12 months of follow-up (Supplementary Tables 1, 2). RARP patients showed significantly more physical complaints following surgery than IRE patients on the SF-12 Physical survey at 6 weeks (Supplementary Table 1); this regressed back to baseline levels at 3 months.

### Early oncological control

44 (88%) IRE patients underwent follow-up biopsies, five refused while one is awaiting biopsies. In total, 70.5% (31/44) men were free of significant PCa. Of those with residual significant PCa (29.5%, 13/44), five were monitored actively, three underwent salvage IRE, three salvage RARP, one salvage low-dose rate brachytherapy. One patient was diagnosed with metastatic disease directly after IRE due to persisting elevated PSA ( $> 10$  ng/mL) that refused pre-treatment template-mapping biopsies and staging imaging. The median decline in PSA after IRE was 51% (IQR 28–85%) when the median post-IRE nadir PSA (2.8 ng/mL,



**Fig. 1 a, b** Rates of pad-free urinary continence (no need for urinary pads per 24 h), for all men (**a**) and men who were continent at baseline (**b**). **c, d** Rates of erections sufficient for intercourse (erections

firm enough to have intercourse), for all men (**c**) and men who were potent at baseline (**d**)

IQR 0.9–4.5) was compared with the median pre-IRE PSA (5.9 ng/mL, IQR 3.3–7.3). None of the RARP patients experienced biochemical failure (PSA ≥ 0.2 ng/mL) within the first 12 months of follow-up.

### Discussion

Our results demonstrated superior rates of preserved UC and ESI with IRE compared to expert RARP in unifocal localized PCa. IRE was compared to high-standard RARP, included the first cases treated with IRE and it may be less complicated, time consuming and more economical to perform IRE. Our 12-month results are limited by large proportions of missing data, 29% versus 3–7% on other time points. Moreover, improvement of ESI and UC following RARP has been described up to 24–36 months [24]. Therefore, the 12-month follow-up of this study may underestimate the final rates of ESI and UC for both RARP and IRE patients. The outcomes of this study also showed that focal therapy is not without morbidity (e.g., 28% of potent men developed erectile dysfunction), especially in

older men with poor baseline functioning. Short-term urinary complaints were more pronounced in IRE patients and were most likely due to irritation to the bladder by the extended electrical field [25]. Some of the summary scores did not reflect the different effects within their domain. For example, the EPIC urinary summary scores were not statistically different despite significant outcome differences between RARP and IRE on UC.

Patients were matched on specific parameters for QoL outcomes (e.g., baseline QoL scores), since these factors are shown to have a pronounced effect on the rates of ESI or UC following RARP [6, 7]. Interestingly, baseline genito-urinary function was not included in the randomization stratification of the ProtecT trial [4]. In the past years, the rates of UC and ESI following RARP improved remarkably compared to the RP outcomes in the ProtecT trial (12-month pad-free UC and ESI rates were 74 and 25%, respectively) [4, 6, 7, 21]. Our RARP rates of pad-free UC and ESI at 12 months (median age of 67 years) are concordant with the literature and superior to the results of our RARP learning curve analysis and the ProtecT trial [5–7].



The intent of focal therapy is to minimize collateral damage to adjacent anatomical structures by tissue-selective treatment [9]. Therefore, the genito-urinary and QoL outcomes of focal IRE must outweigh the results following RARP; as per definition, the oncological control will be inferior. In order to evaluate this equilibrium, long-term oncological data must become available. This study is limited by the absence of long-term oncological data (e.g., metastasis-free survival, overall and PCa-specific mortality). IRE patients were more likely to experience early oncological failure compared to RARP patients when using surrogates of short-term oncological control. However, it is important to highlight that this analysis included all IRE patients during the initial learning curve. Our institutional analysis showed that, when adhering to the consensus guidelines on patient selection methods, and when the IRE procedure was optimized, the oncological failure rate decreased to 13% [26, 27]. This trade-off of an increase chance for residual PCa versus improved preservation of urinary and erectile function needs to be discussed during informed consent. The potential presence of residual disease following IRE may cause psychological burden for patients. However, this seems not to apply to our cohort, as neither treatment illustrated worsening on the SF-12 mental survey. Other limitations include the retrospective analysis of prospectively acquired data, single-surgeon procedures and small cohort size.

However, the intent of this study was not to argue for a change in practice based on our short-term improved rates of UC and ESI versus the impaired surrogates of oncological control following IRE. We aimed to address the need for a new trial design to compare curative PCa treatments, show the feasibility of this propensity-score matching design and validate the rationale of focal therapy. The highest level of unbiased data is attained by the use of head-to-head multi-centre randomized trials, including large cohorts and long-term follow-up. In comparison, propensity score pair-matched cohorts are inherently more prone to be biased. Nevertheless, one may argue that the ever-evolving PCa therapy landscape, biological nature of the disease and strong patient preference hinder the ability to draw firm conclusions from long-term randomized trials. Carefully matched cohorts with long-term QoL and oncological outcome data derived from international registries have the potential to approximate the strength of randomized trials. To reach this goal, it will be crucial to establish the use of identical follow-up methods, time points and questionnaires throughout different treatments. This may create an open platform that may compare new PCa treatments affordably and efficiently to the current accepted segments.

**Acknowledgements** Quoc Nguyen and Anne-Maree Haynes from the Australian Prostate Cancer Research Centre-NSW, the CANSTO

Database and Jayne Matthews for clinical support. This study was funded by the Australian Commonwealth Department of Health and Ageing and the St Vincent's Prostate Cancer Centre.

**Author contributions** Project development: all authors. Data collection: MJS, JIC, MB, WB, ARS, PDS. Data analysis: all authors. Manuscript writing & approval: all authors.

## Compliance with ethical standards

**Conflict of interest** De la Rosette is paid consultant to AngioDynamics. All other authors have nothing to disclose.

**Ethical approval** The board of the Human Research Ethics Committee of St. Vincent's Hospital (Sydney, Australia) approved prospective acquisition of patient-reported QoL outcomes (HREC approval SVH 13/018) after institutional review. The analysis and data collection were performed following the declaration of Helsinki [28] after written informed consent was obtained from all patients.

**Open Access** This article is distributed under the terms of the Creative Commons Attribution 4.0 International License (<http://creativecommons.org/licenses/by/4.0/>), which permits unrestricted use, distribution, and reproduction in any medium, provided you give appropriate credit to the original author(s) and the source, provide a link to the Creative Commons license, and indicate if changes were made.

## References

1. Hamdy FC, Donovan JL, Lane JA et al (2016) 10-year outcomes after monitoring, surgery, or radiotherapy for localized prostate cancer. *N Engl J Med*. <https://doi.org/10.1056/NEJMoa1606220>
2. Mottet N, Bellmunt J, Bolla M et al (2017) EAU-ESTRO-SIOG guidelines on prostate cancer. Part 1: screening, diagnosis, and local treatment with curative intent. *Eur Urol* 71:618–629. <https://doi.org/10.1016/j.eururo.2016.08.003>
3. Ahmed HU, Berge V, Bottomley D et al (2014) Can we deliver randomized trials of focal therapy in prostate cancer? *Nat Rev Clin Oncol* 11:1–10. <https://doi.org/10.1038/nrclinonc.2014.44>
4. Donovan JL, Hamdy FC, Lane JA et al (2016) Patient-reported outcomes after monitoring, surgery, or radiotherapy for prostate cancer. *N Engl J Med* 375:1425–1437. <https://doi.org/10.1056/NEJMoa1606221>
5. Thompson JE, Egger S, Böhm M et al (2014) Superior quality of life and improved surgical margins are achievable with robotic radical prostatectomy after a long learning curve: a prospective single-surgeon study of 1552 consecutive cases. *Eur Urol* 65:521–531. <https://doi.org/10.1016/j.eururo.2013.10.030>
6. Ficarra V, Novara G, Ahlering TE et al (2012) Systematic review and meta-analysis of studies reporting potency rates after robot-assisted radical prostatectomy. *Eur Urol* 62:418–430. <https://doi.org/10.1016/j.eururo.2012.05.046>
7. Ficarra V, Novara G, Rosen RC et al (2012) Systematic review and meta-analysis of studies reporting urinary continence recovery after robot-assisted radical prostatectomy. *Eur Urol* 62:405–417. <https://doi.org/10.1016/j.eururo.2012.05.045>
8. Chen RC, Basak R, Meyer A et al (2017) Association between choice of radical prostatectomy, external beam radiotherapy, brachytherapy, or active surveillance and patient-reported quality of life among men with localized prostate cancer. *JAMA* 317:1141–1150. <https://doi.org/10.1001/jama.2017.1652>

9. Valerio M, Cerantola Y, Eggener SE et al (2017) New and established technology in focal ablation of the prostate: a systematic review. *Eur Urol* 44:17–34. <https://doi.org/10.1016/j.eururo.2016.08.044>
10. Donaldson IA, Alonzi R, Barratt D et al (2014) Focal therapy: patients, interventions, and outcomes: a report from a consensus meeting. *Eur Urol* 67–73:771–777. <https://doi.org/10.1016/j.eururo.2014.09.018>
11. Tay KJ, Scheltema MJ, Ahmed HU et al (2017) Patient selection for prostate focal therapy in the era of active surveillance: an International Delphi Consensus Project. *Prostate Cancer Prostatic Dis* 3:294–299. <https://doi.org/10.1038/pcan.2017.8>
12. Davalos RV, Mir LM, Rubinsky B (2005) Tissue ablation with irreversible electroporation. *Ann Biomed Eng* 33:223–231. <https://doi.org/10.1007/s10439-005-8981-8>
13. Ting F, Tran M, Böhm M et al (2016) Focal irreversible electroporation for prostate cancer: functional outcomes and short-term oncological control. *Prostate Cancer Prostatic Dis* 1:46–52. <https://doi.org/10.1038/pcan.2015.47>
14. Patel VR, Palmer KJ, Coughlin G, Samavedi S (2008) Robot-assisted laparoscopic radical prostatectomy: perioperative outcomes of 1500 cases. *J Endourol* 22:2299–2305. <https://doi.org/10.1089/end.2008.9711>
15. Rocco B, Gregori A, Stener S et al (2007) Posterior reconstruction of the rhabdosphincter allows a rapid recovery of continence after transperitoneal videolaparoscopic radical prostatectomy. *Eur Urol* 51:996–1003. <https://doi.org/10.1016/j.eururo.2006.10.014>
16. Briganti A, Larcher A, Abdollah F et al (2012) Updated nomogram predicting lymph node invasion in patients with prostate cancer undergoing extended pelvic lymph node dissection: the essential importance of percentage of positive cores. *Eur Urol* 61:480–487. <https://doi.org/10.1016/j.eururo.2011.10.044>
17. Dindo D, Demartines N, Clavien P-A (2004) Classification of surgical complications. *Ann Surg* 240:205–213. <https://doi.org/10.1097/01.sla.0000133083.54934.ae>
18. Wei JT, Dunn RL, Litwin MS et al (2000) Prostate Cancer Index Composite (Epic) for comprehensive assessment of health-related. *Urology* 56:899–905. [https://doi.org/10.1016/S0090-4295\(00\)00858-X](https://doi.org/10.1016/S0090-4295(00)00858-X)
19. Barry MJ, Fowler FJ, O’Leary MP et al (1992) The American Urological Association Symptom Index for benign prostatic hyperplasia. *J Urol* 148:1549–1557. <https://doi.org/10.1016/j.juro.2016.10.071>
20. Gandek B, Ware JE, Aaronson NK et al (1998) Cross-validation of item selection and scoring for the SF-12 health survey in nine countries: results from the IQOLA project. *J Clin Epidemiol* 51:1171–1178. [https://doi.org/10.1016/S0895-4356\(98\)00109-7](https://doi.org/10.1016/S0895-4356(98)00109-7)
21. Resnick MJ, Koyama T, Fan K-H et al (2013) Long-term functional outcomes after treatment for localized prostate cancer. *N Engl J Med* 368:436–445. <https://doi.org/10.1056/NEJMoa1209978>
22. Bates D, Machler M, Bolker B, Walker S (2015) Fitting linear mixed-effects models using lme4. *J Stat Softw.* <https://doi.org/10.18637/jss.v067.i01>
23. R Core Team (2016) R: a language and environment for statistical computing. R Foundation for Statistical Computing, Vienna
24. Lee JK, Assel M, Thong AE et al (2015) Unexpected long-term improvements in urinary and erectile function in a large cohort of men with self-reported outcomes following radical prostatectomy. *Eur Urol* 68:899–905. <https://doi.org/10.1016/j.eururo.2015.07.074>
25. van den Bos W, Jurhill RR, de Bruin DM et al (2016) Histopathological outcomes after irreversible electroporation in prostate cancer; results of an ablate-and-resect study. *J Urol.* <https://doi.org/10.1016/j.juro.2016.02.2977>
26. van den Bos W, Scheltema MJ, Siriwardana AR et al (2017) Focal irreversible electroporation as primary treatment for localized prostate cancer. *BJU Int.* <https://doi.org/10.1111/bju.13983>
27. Scheltema MJ, Tay KJ, Postema AW et al (2017) Utilization of multiparametric prostate magnetic resonance imaging in clinical practice and focal therapy: report from a Delphi consensus project. *World J Urol* 35:695–701. <https://doi.org/10.1007/s00345-016-1932-1>
28. World Health Organisation (2013) Declaration of Helsinki World Medical Association Declaration of Helsinki Ethical principles for medical research involving human subjects. *J Am Med Assoc* 310:2191–2194. <https://doi.org/10.1001/jama.2013.281053>