

# Alveolar capillary dysplasia with misalignment of the pulmonary veins: clinical, histological, and genetic aspects

Evelien Slot<sup>1,2</sup>, Gabriëla Edel<sup>1</sup>, Ernest Cutz<sup>3</sup>, Arno van Heijst<sup>4</sup>, Martin Post<sup>5</sup>, Marco Schnater<sup>1</sup>, René Wijnen<sup>1</sup>, Dick Tibboel<sup>1</sup>, Robbert Rottier<sup>1</sup> and Annelies de Klein<sup>2</sup>

<sup>1</sup>Department of Pediatric Surgery, Sophia Children's Hospital, Erasmus University Medical Center, Rotterdam, The Netherlands; <sup>2</sup>Department of Clinical Genetics, Erasmus University Medical Center, Rotterdam, The Netherlands; <sup>3</sup>Division of Pathology, Department of Paediatric Laboratory Medicine, Hospital for Sick Children, Toronto, ON, Canada; <sup>4</sup>Department of Neonatology, Radboud University Medical Center –Amalia Children's Hospital, Nijmegen, The Netherlands; <sup>5</sup>Department of Translational Medicine, Hospital for Sick Children, Toronto, ON, Canada

## Abstract

Alveolar capillary dysplasia with misalignment of the pulmonary veins (ACD/MPV) is a rare and lethal disorder mainly involving the vascular development of the lungs. Since its first description, significant achievements in research have led to a better understanding of the underlying molecular mechanism of ACD/MPV and genetic studies have identified associations with genomic alterations in the locus of the transcription factor *FOXF1*. This in turn has increased the awareness among clinicians resulting in over 200 cases reported so far, including genotyping of patients in most recent reports. Collectively, this promoted a better stratification of the patient group, leading to new perspectives in research on the pathogenesis. Here, we provide an overview of the clinical aspects of ACD/MPV, including guidance for clinicians, and review the ongoing research into the complex molecular mechanism causing this severe lung disorder.

## Keywords

pulmonary development, pulmonary vascular biology, neonatal lung disease, bronchopulmonary dysplasia, transcription factors

Date received: 20 June 2018; accepted: 22 July 2018

Pulmonary Circulation 2018; 8(3) 1–8

DOI: 10.1177/2045894018795143

## Clinical presentation

The clinical presentation of alveolar capillary dysplasia with misalignment of the pulmonary veins (ACD/MPV) is characterized by respiratory distress and cyanosis caused by severe pulmonary hypertension (PH) and insufficient oxygen uptake.<sup>1–3</sup> Ninety-five percent of ACD/MPV patients are born at full term with normal birth weights and Apgar scores<sup>4,5</sup> and most patients develop symptoms within the first 24 h of life.<sup>1,6,7</sup> In up to 80% of the cases, associated malformations are found for which surgery is occasionally needed.<sup>3,8–14</sup> These malformations predominantly affect the gastrointestinal tract, but also affect the cardiovascular and urogenital system.<sup>2–5,9,15,16</sup> Irrespective of the co-morbidities, the mortality of ACD/MPV is almost 100%. The vast majority succumb to hypoxemic respiratory failure within days to weeks after presentation despite receiving supportive care including extracorporeal

membrane oxygenation (ECMO).<sup>4,12,17–24</sup> Atypical, milder cases of ACD/MPV patients that present after 24 h of life or survive beyond the neonatal period have sporadically been described and will be discussed in the histology section.

## Incidence

Since ACD/MPV was first described in 1981, over 200 cases have been reported.<sup>3,25</sup> In 2000, Al-Hathlol et al. reported two ACD/MPV patients among 226 infants autopsied over a 10-year period in the province of Manitoba, Canada.<sup>4</sup> During these 10 years, the total number of deliveries was 170,000, with 340 infants dying within the neonatal period.

Corresponding author:

Evelien Slot, Department of Clinical Genetics, Rm Ee2089, Erasmus University Medical Center, Wytemaweg 80, 3015 CN Rotterdam, The Netherlands.  
Email: e.slot@erasmusmc.nl

It is unclear whether other ACD/MPV cases were among the remaining deceased neonates because an autopsy or biopsy is needed for confirmation. Based on this study, the incidence can be estimated at approximately 1/100,000. In The Netherlands, the incidence can be estimated at 1/200,000 if calculated from the total number of ACD/MPV patients (20) diagnosed in either the Radboudumc Amalia Children's Hospital Nijmegen or the Sophia Children's Hospital Rotterdam since 1993 and the total number of living births during this period (4.3 million<sup>26</sup>). However, also in The Netherlands, it is likely that ACD/MPV is underdiagnosed and sometimes misdiagnosed as idiopathic PH due to the lack of autopsies.

## Diagnosis

The current gold standard to unambiguously diagnose ACD/MPV is histological examination of the lungs. In the majority of studies, most cases were diagnosed postmortem by autopsy.<sup>4,5,27</sup> In one study, 85% of cases were diagnosed pre-mortem by open lung biopsy.<sup>1</sup> In this study, the median time from admission to lung biopsy was 6.5 days. Of neonatal patients who underwent an open lung biopsy during ECMO therapy in the Sophia Children's Hospital Rotterdam or the Radboudumc Amalia Children's Hospital Nijmegen, 32% were diagnosed with ACD/MPV. In all these patients, treatment was withdrawn due to futility. In order to avoid unnecessary and expensive ECMO treatment, it is recommended to perform a lung biopsy before starting ECMO therapy or, if it has been initiated already, within the first week of ECMO.<sup>28</sup> Considering the non-uniformly distribution of lung involvement observed in some patients, it is recommended to obtain more than one lung sample to avoid false-negatives.

Echocardiography is used to confirm PH and to exclude structural cardiovascular abnormalities.<sup>1,4,7,10,18,19,21,29</sup> An X-ray of the lungs does not show features specific for ACD/MPV, but can show unspecific diffuse haziness or pneumothoraces, most likely caused by mechanical ventilation.<sup>4,7,10,18,19,29</sup> A computed tomography (CT) scan may show bilateral widespread ground-glass infiltrates with septal line thickening,<sup>12,21</sup> while a CT angiography does not result in the diagnosis either due to the limitations of imaging most peripheral capillaries of the lung. Photoacoustic imaging, however, is able to perform molecular imaging at a high resolution inside different tissues and therefore overcomes the limitations of a CT angiography. So far, photoacoustic imaging has only been used in biomedical research settings, but since studies in humans are very promising, it could provide an excellent tool to diagnose ACD/MPV in the future.<sup>30</sup>

During pregnancy, there are no clinical signs associated with ACD/MPV. However, if there is a high suspicion for ACD/MPV, for instance after an earlier familial case, fetal genetic testing for deletions and mutations in the *FOXF1* locus could contribute to an early diagnosis.<sup>16,31</sup> In addition, a decreased total fetal lung volume (FLV) measured by

prenatal magnetic resonance imaging (MRI) and ultrasound together with a lowered MRI signal intensity can be used to detect fetal pulmonary hypoplasia associated with multiple diffuse lung developmental disorders among others, including ACD/MPV.<sup>32</sup> An early detection of ACD/MPV allows adequate prenatal counseling regarding the dismal prognosis although the postnatal clinical course must be observed as it differs between patients. Histological examination will be necessary to confirm the diagnosis.

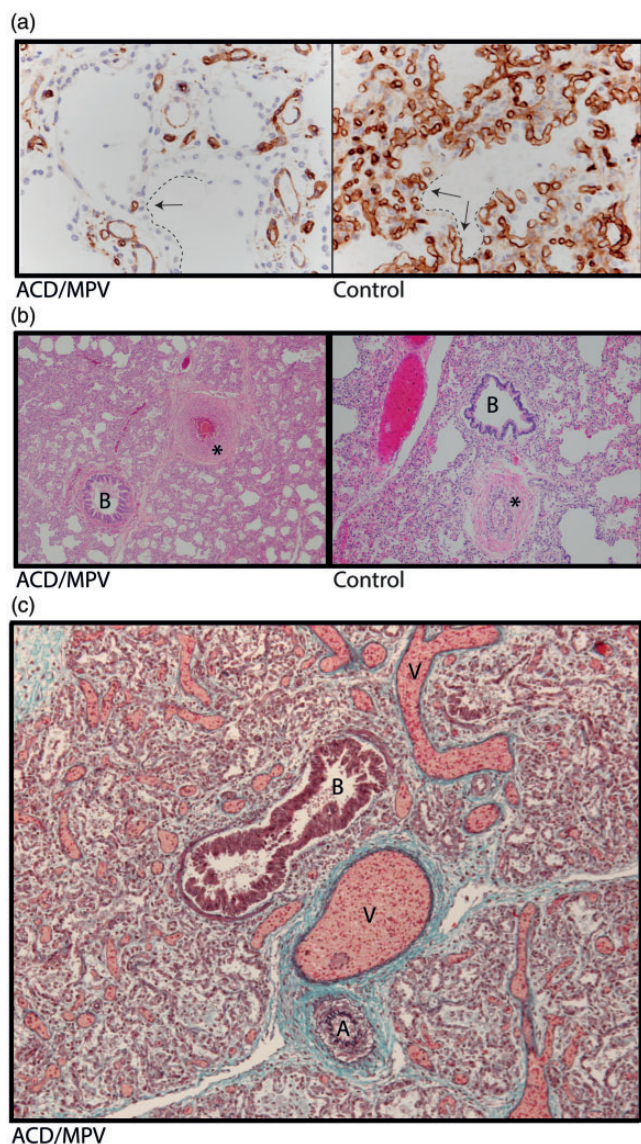
## Histology

On gross examination, the lungs in cases of ACD/MPV appear bulky with up to a threefold increase in expected weight due to increased interstitial tissue.<sup>33–35</sup> The most significant differences between ACD/MPV and healthy lungs are noted on a microscopic level. In normal lungs, the alveolar capillaries are in close contact with the alveolar epithelium lined by flattened type 1 pneumocytes to provide sufficient gas exchange. In cases of ACD/MPV, the lung tissue is characterized by diffuse thickening of interalveolar septa and marked reduction of pulmonary alveolar capillaries. In addition, these scanty alveolar capillaries are located away from the alveolar epithelium which is predominantly composed of hyperplastic cuboidal type 2 pneumocytes (Fig. 1a).<sup>3–5,33–35</sup> Typically, in cases of ACD/MPV, the walls of small peripheral pulmonary arteries are thickened due to hypertrophic smooth muscle cells in the media (Fig. 1b). Further, the majority of ACD/MPV patients present with peripheral veins in the bronchovascular bundle adjacent to the pulmonary arteries outside the interlobular septa while normally they are located within the septa. This phenomenon is called “misalignment of the pulmonary veins” (Fig. 1c).

It is postulated that the milder phenotype of atypical ACD/MPV patients, including late presenters and long-term survivors, is correlated with the extent of affected lung tissue.<sup>12,19–21,24,36</sup> Although a few atypical patients with diffuse histological findings similar to the typical patients have been described,<sup>18,22</sup> a very recent study showed a heterogeneous non-uniform distribution of histological findings in all atypical ACD/MPV patients.<sup>36</sup> Nevertheless, correlating the histological features with phenotypic differences between patients remains difficult due to factors such as incomplete autopsy records, varying co-existing malformations, and variations in treatment, especially concerning treatment withdrawal.<sup>5</sup> Either way, when a biopsy is obtained to confirm the diagnosis of ACD/MPV, consideration should be given to the possibility of uneven distribution of lesions. This is especially important if no other life-threatening co-malformations are found and the prognosis is based solely on the severity of lung lesions.

## Treatment

Similar to persistent PH of the newborn (PPHN), the clinical approach to ACD/MPV consists of general supportive



**Fig. 1.** Lung histology of a 2-week-old infant with ACD/MPV. (a) Immunostaining for CD31 (brown color) highlighting a reduced number of alveolar capillary endothelial cells located away (arrows) from the inner side of the alveoli (dashed lines) in ACD/MPV compared to control lung. (b) Illustration of a hypertrophic arterial wall (\*) in hematoxylin and eosin stained lung tissue from an ACD/MPV case compared to control. (c) Illustration of the misaligned pulmonary veins (V) adjacent to the bronchiole (B) and thickened pulmonary arteriole (A) in trichrome stained ACD/MPV lung tissue. Magnifications: (a) 200 $\times$ ; (b) 50 $\times$ ; (c) 100 $\times$ .

cardiorespiratory care and vasodilatory agents to reduce PH. In most cases, intubation and mechanical ventilation are immediately required at time of presentation due to the very low oxygen saturation levels. Rarely, only supplemental oxygen is temporarily enough to stabilize the patient before mechanical ventilation is needed.<sup>4,7,10,15,17,20,37</sup> To reduce the pulmonary vascular resistance, inhaled nitric oxide and oral or intravenous vasodilatory agents such as milrinone, sildenafil, or epoprostenol are used. In the short

term, this can improve the saturation levels, but literature shows that the dosage needs to be increased repeatedly and that eventually the severe hypoxemia will be fatal.<sup>4,5,7,10,18,20,22,23,37,38</sup> Interestingly, one atypical ACD/MPV patient was still alive on oral vasodilators and supplemental oxygen at the age of 38 months when the case report was written.<sup>21</sup>

ECMO therapy can be used to stabilize infants in life-threatening conditions if the diagnosis is not clear. Yet, the vast majority of ACD/MPV patients cannot be weaned from ECMO, while ECMO itself is invasive, comes with risks of complications, and is expensive.<sup>1,4,7,8,19,23,28,29,37</sup> Ideally, an open lung biopsy is performed before ECMO therapy has started or at least before a “second-run” ECMO therapy is considered.<sup>7,14,27,28</sup> On the other hand, ECMO therapy can provide an excellent bridge to lung transplantation in ACD/MPV patients with a mild phenotype.<sup>12,36</sup> To date, seven ACD/MPV patients receiving bilateral lung transplantation have been reported in the United States with a comparable five-year survival (56%) to infants transplanted for other indications at the St. Louis Children’s Hospital, Missouri.<sup>36,39</sup> All of the transplanted ACD/MPV patients had an atypical milder phenotype than the classical ACD/MPV patients.<sup>12,36,40</sup> Although the overall survival in this young age group is still disappointing, ECMO therapy followed by lung transplantation is the potential treatment of choice for selected ACD/MPV patients.<sup>36,41–43</sup>

## Pathogenesis

Although the pathogenesis of ACD/MPV has not yet been fully defined, several hypotheses implicating various factors and events have been proposed. It is thought that ACD/MPV is caused by an early disturbance in embryonic lung development. Already at the end of the embryonic phase of lung development (five weeks of gestation), the two lung buds are surrounded by a vascular network that is connected to the systemic circulation. During the pseudoglandular phase (5–16 weeks of gestation), this network expands by angiogenesis when the two buds branch into the loose mesenchymal tissue. In the canalicular and saccular stage (16–26 and 26–38 weeks of gestation, respectively), expansion of the network continues, increasing the capillary density in the developing lung.<sup>44,45</sup> The deficiency of capillaries in ACD/MPV lung tissue implies a disturbance already in the early embryonic and pseudoglandular phase. The presence of thickened septa and simplified acini with a reduced number of type 1 pneumocytes in ACD/MPV lungs indicate that also the saccular stage is affected, in which normally the alveolar saccules are formed with thin septa covered by type 1 pneumocytes.<sup>35,46,47</sup>

The cause of PH in ACD/MPV is still a topic of discussion. It was suggested that chronic hypoxemia in the newborn induces hypertrophic arterial changes which cause PH.<sup>35,38</sup> However, this seems unlikely because the extent of arterial changes in ACD/MPV newborns would imply

the presence of hypoxemia already during early fetal life when the oxygen is still provided by the placenta. Moreover, this theory is inconsistent with the poor outcome of ACD/MPV patients despite mechanical ventilation or ECMO therapy which diminishes the hypoxemia. Another, more acceptable, theory is that the PH results from a marked reduction in the alveolar capillary bed.<sup>18,33</sup> However, abrupt deterioration in late presenters without any signs of PH during the time before deterioration questions this theory as well.<sup>4,18,23,33,34</sup> Collectively, the progressive PH combined with structural histological changes in all ACD/MPV patients suggests a disturbance in normal pulmonary vascular development and is currently the subject of several studies in different laboratories.

The origin of the “misaligned pulmonary veins” found in peripheral ACD/MPV lung tissue, and whether they are indeed malpositioned, is not clear. Considering the presence of valves, it is more likely that the anomalous veins originate from bronchial veins that normally do not extend beyond the larger bronchopulmonary branches.<sup>33–35</sup> This theory is supported by a study showing “misaligned pulmonary veins” originating from bronchial veins and act as shunt vessels between the bronchial and pulmonary veins.<sup>48</sup>

### Role of FOXF1 in ACD/MPV

In 2009, Stanckiewicz and Shaw-Smith suggested an association between ACD/MPV and haploinsufficiency of the Forkhead Box F1 (*FOXF1*) gene.<sup>2</sup> Since then, they have accumulated the largest ACD/MPV sample collection of 141 patients in which they identified 86 pathogenic variants containing copy number variations (CNVs), point mutations, and one complex rearrangement, all involving the *FOXF1* gene or its regulatory region.<sup>49</sup> This regulatory region was identified by defining the shortest region of overlapping genomic deletions in ACD/MPV patients.<sup>50,51</sup> The remaining 55 cases were not genetically tested due to insufficient DNA quality.<sup>49</sup> Additionally, a variety of heterozygous genomic variants in the *FOXF1* locus of ACD/MPV patients have been reported by other research groups.<sup>8,16,20</sup> Most of the variants are collected in the Leiden Open Variation Database (LOVD).<sup>52</sup>

FOXF1, first described by Pierrou et al. in 1994, is a member of the Forkhead box transcription factors (TFs) and plays a role during embryonic development, specifically in lung development.<sup>53</sup> Studies in rodent embryos show that FOXF1 is already expressed at the primitive streak stage in the mesodermal lateral plate and continues to be expressed during development in mesenchymal lung tissue.<sup>54–58</sup> Very little is known about FOXF1 expression during human lung development, but in newborns FOXF1 is expressed in mesenchymal stromal cells from tracheal aspirates.<sup>59</sup> FOXF1 is regulated by Sonic hedgehog (SHH) signaling, one of the key regulators of embryonic development.<sup>60</sup> Further research on the signaling pathways involving FOXF1 is ongoing. A recent study showed that the serotonin

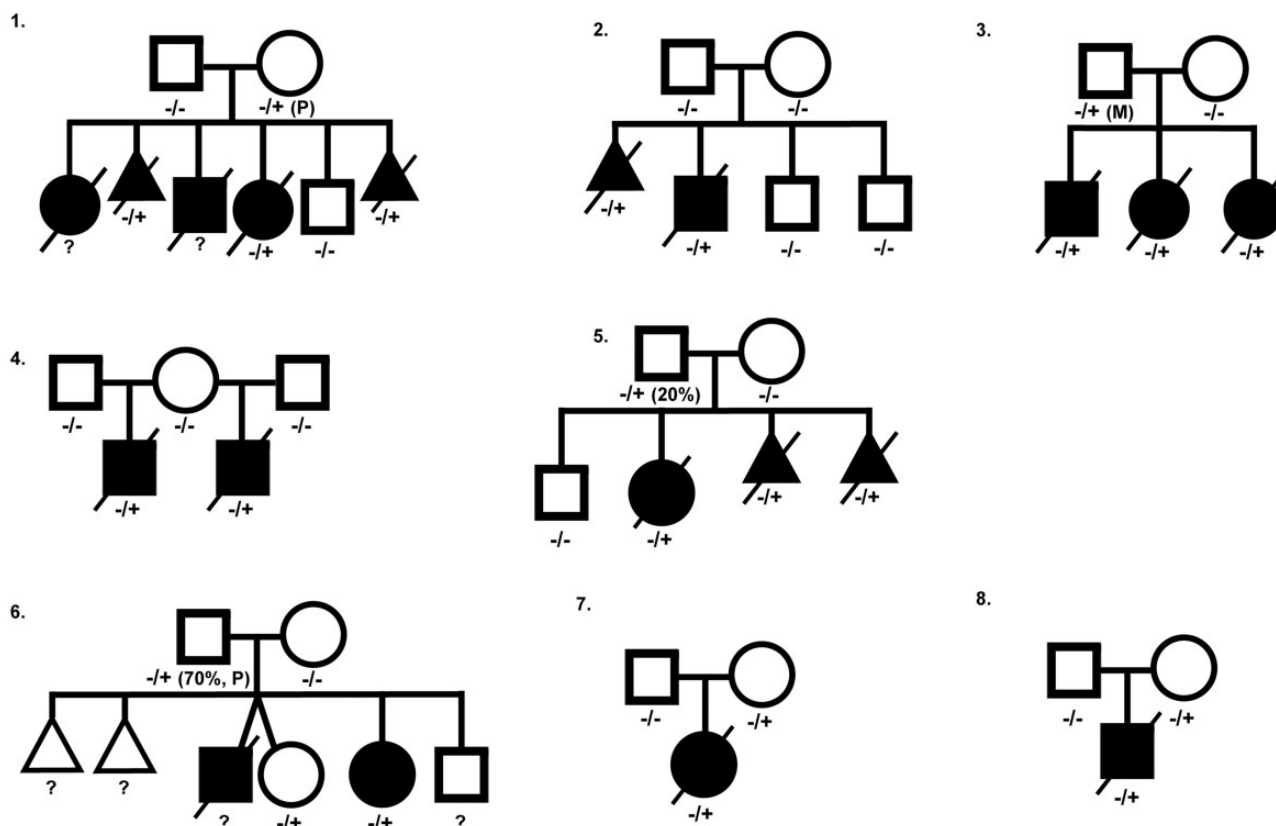
transporter (SERT) protein, important during pulmonary vascular remodeling and adaptation at birth, might be one of the downstream targets of FOXF1 as the expression of SERT protein was completely absent in ACD/MPV patients while expression levels in other disorders causing PH in the newborn were normal.<sup>61</sup> Although rodent models enable us to study the function of FOXF1 during lung development, the phenotype of heterozygous *FoxF1* mice does not completely correlate with ACD/MPV. Similar to ACD/MPV, heterozygous deletion of *FoxF1* gives rise to multiple foregut and lung defects including lobular and alveolar underdevelopment, compact lung mesenchyme, and hemorrhagic lesions. However, the pulmonary branching defects dominate in these models while the main problem in ACD/MPV is the underdeveloped pulmonary vascularization.<sup>62</sup> These differences illustrate the difficulties of studying the pathogenesis of ACD/MPV.

### Imprinting of FOXF1

The question why a heterozygous genomic alteration in the *FOXF1* gene or its regulatory region causes haploinsufficiency and results in ACD/MPV is still unanswered. The most suggested and studied explanation is parental imprinting where epigenetic marks determine if a particular gene is only expressed on the paternal or maternal allele.<sup>2,50,54,63</sup> Assuming this hypothesis is true, all genomic alterations associated with ACD/MPV would be located on the same parental chromosome. Indeed, all but one of the deletions located in the regulatory region did arise on the maternal chromosome. However, mutations located in the *FOXF1* transcription region are found on both paternal and maternal alleles. Still, this might implicate parental imprinting of the regulatory region instead of the transcription region itself.<sup>49</sup> Unfortunately, detailed studies on imprinting of the *FOXF1* locus in fetal, neonatal, and adult lung tissue have not been able to confirm this idea.<sup>50,64</sup>

### Phenotypical differences of ACD/MPV

Although earlier studies suggested a high correlation between ACD/MPV and genomic alterations in the *FOXF1* locus, familial cases show large phenotypical differences and, again, illustrate the complexity of the molecular mechanisms causing ACD/MPV. In total, eight ACD/MPV families with associated genomic variants in the *FOXF1* transcription region have been reported so far (Fig. 2; Table 1).<sup>49,63,65,66</sup> In six of these families, the pathogenic variant was also found in one of the parents including two fathers who were mosaic. None of those parents exhibited signs of ACD/MPV. The phenotypical variance is also illustrated by family 6 (Fig. 2) that was previously described by Reiter et al.<sup>66</sup> In this family, two children were affected by ACD/MPV but only one of them showed classical features of ACD/MPV. The other child presented with an atypical form and survived. Interestingly, another sister carried the



**Fig. 2.** Pedigrees of published ACD/MPV families corresponding to Table 1, illustrating the complex inheritance pattern. Filled square or circle = affected male or female; open square or circle = unaffected male or female; crossed out = deceased; open triangle = spontaneous abortion; crossed-out filled triangle = terminated pregnancy.  $-/+$ , presence of heterozygous variant in the *FOXF1* gene;  $-/-$ , no variant in *FOXF1* gene present; P, variant located on paternal allele; M, variant located on maternal allele.

**Table 1.** Overview of published ACD/MPV families with genomic alterations in the *FOXF1* gene.

Family number (Fig. 2)	Genomic alteration (all located in first <i>FOXF1</i> exon)	Protein change	Inheritance	Parental inheritance	Reference
1	c.416G > T	Arg139Leu	Maternal	<i>De novo</i> paternal allele	Sen et al., 2013
2	c.253T > A	Phe85Ile	Not found in parental DNA: germline mosaicism?	—	Sen et al., 2013
3	Insertion 5 UTR side	Unknown	Paternal	<i>De novo</i> maternal allele	Szafranski et al., 2016
4	c.849_850del	p.Ile285fs	Not found in parental DNA: maternal germline mosaicism?	—	Szafranski et al., 2016
5	c90_96del	p.Ser31fs	Paternal; 20% mosaicism in blood nucleated cells	<i>De novo</i> , allele unknown	Szafranski et al., 2016
6	c.231C > A	p.Phe77Leu	Paternal; 70% mosaicism in blood nucleated cells	<i>De novo</i> paternal allele	Reiter et al., 2016
7	c.253T > C	p.Phe85Leu	Maternal	Unknown	Sen et al., 2013
8	c.294C > A	p.His98Gln	Maternal	Unknown	Sen et al., 2013

same mutation but was unaffected.<sup>49,66</sup> The genotype–phenotype variation might be associated with altered FOXF1 expression levels, similar to *FoxF1* heterozygote knock-out mice that show variation in the phenotype severity correlated to *FoxF1* expression levels.<sup>58</sup> Different expression levels can be the result of so-called “modifier genes” that modify the expression of the *FOXF1* gene. In combination with mutations or deletions in the *FOXF1* locus, alterations in these modifier genes might lead to ACD/MPV. This idea is supported by the finding that the survival of heterozygous *FoxF1* knock-out mice depends on their genetic background.<sup>62</sup>

## Summary

ACD/MPV is a rare, almost uniformly lethal, developmental disorder of the lungs. Patients suffer from severe hypoxemia and PH that progresses over time. Although the awareness of ACD/MPV is growing among clinicians, it can be confused with idiopathic PH as the clinical picture is similar. This prolongs the time to confirm the diagnosis and contributes to unnecessary suffering of patients and a high cost of therapy. As soon as the response to medical treatment deviates from the expected, a histological examination should be performed. Moreover, an open lung biopsy is ideally performed before ECMO therapy or surgical interventions for co-occurring anomalies are initiated. For a very small selection of atypical ACD/MPV patients, a lung transplantation can be considered although survival rates are still disappointing. ACD/MPV is associated with haploinsufficiency of FOXF1, a TF regulated by SHH that plays a significant role during early lung development. Although phenotypical differences are present, prenatal or postnatal genetic testing could contribute to earlier detection and allows adequate consultation about the prognosis and the process of decision-making.

## Conflict of interest

The author(s) declare that there is no conflict of interest.

## Funding

This research received no specific grant from any funding agency in the public, commercial, or not-for-profit sectors.

## References

- Eulmesekian P, Cutz E, Parvez B, et al. Alveolar capillary dysplasia: a six-year single center experience. *J Perinat Med* 2005; 33: 347–352.
- Stankiewicz P, Sen P, Bhatt SS, et al. Genomic and genic deletions of the FOX gene cluster on 16q24.1 and inactivating mutations of FOXF1 cause alveolar capillary dysplasia and other malformations. *Am J Hum Genet* 2009; 84: 780–791.
- Bishop NB, Stankiewicz P and Steinhorn RH. Alveolar capillary dysplasia. *Am J Respir Crit Care Med* 2011; 184: 172–179.
- Al-Hathlol K, Phillips S, Seshia MK, et al. Alveolar capillary dysplasia. Report of a case of prolonged life without extracorporeal membrane oxygenation (ECMO) and review of the literature. *Early Hum Dev* 2000; 57: 85–94.
- Sen P, Thakur N, Stockton DW, et al. Expanding the phenotype of alveolar capillary dysplasia (ACD). *J Pediatr* 2004; 145: 646–651.
- Al-Hathlol K, Idiong N, Hussain A, et al. A study of breathing pattern and ventilation in newborn infants and adult subjects. *Acta Paediatr* 2000; 89: 1420–1425.
- Michalsky MP, Arca MJ, Groenman F, et al. Alveolar capillary dysplasia: a logical approach to a fatal disease. *J Pediatr Surg* 2005; 40: 1100–1105.
- Ma Y, Jang MA, Yoo HS, et al. A novel de novo pathogenic variant in FOXF1 in a newborn with alveolar capillary dysplasia with misalignment of pulmonary veins. *Yonsei Med J* 2017; 58: 672–675.
- Arreo Del Val V, Avila-Alvarez A, Schteffer LR, et al. Alveolar capillary dysplasia with misalignment of the pulmonary veins associated with aortic coarctation and intestinal malrotation. *J Perinatol* 2014; 34: 795–797.
- Miranda J, Rocha G, Soares H, et al. Alveolar capillary dysplasia with misalignment of pulmonary veins (ACD/MPV): a case series. *Case Rep Crit Care* 2013; 2013: 327250.
- Rabah R and Poulik JM. Congenital alveolar capillary dysplasia with misalignment of pulmonary veins associated with hypoplastic left heart syndrome. *Pediatr Dev Pathol* 2001; 4: 167–174.
- Szafrański P, Dharmadhikari AV, Wambach JA, et al. Two deletions overlapping a distant FOXF1 enhancer unravel the role of lncRNA LINC01081 in etiology of alveolar capillary dysplasia with misalignment of pulmonary veins. *Am J Med Genet A* 2014; 164A: 2013–2019.
- Garola RE and Thibeault DW. Alveolar capillary dysplasia, with and without misalignment of pulmonary veins: an association of congenital anomalies. *Am J Perinatol* 1998; 15: 103–107.
- Gerrits LC, De Mol AC, Bulten J, et al. Omphalocele and alveolar capillary dysplasia: a new association. *Pediatr Crit Care Med* 2010; 11: e36–37.
- Antao B, Samuel M, Kiely E, et al. Congenital alveolar capillary dysplasia and associated gastrointestinal anomalies. *Fetal Pediatr Pathol* 2006; 25: 137–145.
- Prothro SL, Plosa E, Markham M, et al. Prenatal diagnosis of alveolar capillary dysplasia with misalignment of pulmonary veins. *J Pediatr* 2016; 170: 317–318.
- Abdallah HI, Karmazin N and Marks LA. Late presentation of misalignment of lung vessels with alveolar capillary dysplasia. *Crit Care Med* 1993; 21: 628–630.
- Ahmed S, Ackerman V, Faught P, et al. Profound hypoxemia and pulmonary hypertension in a 7-month-old infant: late presentation of alveolar capillary dysplasia. *Pediatr Crit Care Med* 2008; 9: e43–46.
- Boggs S, Harris MC, Hoffman DJ, et al. Misalignment of pulmonary veins with alveolar capillary dysplasia: affected siblings and variable phenotypic expression. *J Pediatr* 1994; 124: 125–128.
- Goel D, Oei JL, Lui K, et al. Antenatal gastrointestinal anomalies in neonates subsequently found to have alveolar capillary dysplasia. *Clin Case Rep* 2017; 5: 559–566.
- Ito Y, Akimoto T, Cho K, et al. A late presenter and long-term survivor of alveolar capillary dysplasia with misalignment of the pulmonary veins. *Eur J Pediatr* 2015; 174: 1123–1126.

22. Kodama Y, Tao K, Ishida F, et al. Long survival of congenital alveolar capillary dysplasia patient with NO inhalation and epoprostenol: effect of sildenafil, beraprost and bosentan. *Pediatr Int* 2012; 54: 923–926.
23. Shankar V, Haque A, Johnson J and Pietsch J. Late presentation of alveolar capillary dysplasia in an infant. *Pediatr Crit Care Med* 2006; 7: 177–179.
24. Oldenburg J, Van Der Pal HJ, Schrevel LS, et al. Misalignment of lung vessels and alveolar capillary dysplasia. *Histopathology* 1995; 27: 192–194.
25. Janney CG, Askin FB and Kuhn C 3rd. Congenital alveolar capillary dysplasia—an unusual cause of respiratory distress in the newborn. *Am J Clin Pathol* 1981; 76: 722–727.
26. Central Bureau for Statistics. (2018, June 5). Statistics Netherlands: Birth; key figures. Retrieved from <http://statline.cbs.nl/Statweb/publication/?DM=SLLEN&PA=37422eng&D1=0,3-27,32-39,48-51,53-54&D2=0,5,10,15,20,25,30,35,43-66&LA=EN&HDR=T&STB=G1&VW=T>
27. Inwald D, Brown K, Gensini F, et al. Open lung biopsy in neonatal and paediatric patients referred for extracorporeal membrane oxygenation (ECMO). *Thorax* 2004; 59: 328–333.
28. Houmes RJ, Ten Kate CA, Wildschut ED, et al. Risk and relevance of open lung biopsy in pediatric ECMO patients: the Dutch experience. *J Pediatr Surg* 2017; 52: 405–409.
29. Ng PC, Lewindon PJ, Siu YK, et al. Congenital misalignment of pulmonary vessels: an unusual syndrome associated with PPHN. *Acta Paediatr* 1995; 84: 349–353.
30. Zackrisson S, van de Ven S and Gambhir SS. Light in and sound out: emerging translational strategies for photoacoustic imaging. *Cancer Res* 2014; 74: 979–1004.
31. Parris T, Nik AM, Kotecha S, et al. Inversion upstream of FOXF1 in a case of lethal alveolar capillary dysplasia with misalignment of pulmonary veins. *Am J Med Genet A* 2013; 161A: 764–770.
32. Zirpoli S, Munari AM, Rustico M, et al. Fetal-MRI prenatal diagnosis of severe bilateral lung hypoplasia: alveolar capillary dysplasia case report. *J Prenat Med* 2016; 10: 15–19.
33. Cullinane C, Cox PN and Silver MM. Persistent pulmonary hypertension of the newborn due to alveolar capillary dysplasia. *Pediatr Pathol* 1992; 12: 499–514.
34. Sirkin W, O'Hare BP, Cox PN, et al. Alveolar capillary dysplasia: lung biopsy diagnosis, nitric oxide responsiveness, and bronchial generation count. *Pediatr Pathol Lab Med* 1997; 17: 125–132.
35. Haraida S, Lochbuhler H, Heger A, et al. Congenital alveolar capillary dysplasia: rare cause of persistent pulmonary hypertension. *Pediatr Pathol Lab Med* 1997; 17: 959–975.
36. Towe CT, White FV, Grady RM, et al. Infants with atypical presentations of alveolar capillary dysplasia with misalignment of the pulmonary veins who underwent bilateral lung transplantation. *J Pediatr* 2018; 194: 158–164.
37. Castilla-Fernandez Y, Copons-Fernandez C, Jordan-Lucas R, et al. Alveolar capillary dysplasia with misalignment of pulmonary [corrected] veins: concordance between pathological and molecular diagnosis. *J Perinatol* 2013; 33: 401–403.
38. Steinhorn RH, Cox PN, Fineman JR, et al. Inhaled nitric oxide enhances oxygenation but not survival in infants with alveolar capillary dysplasia. *J Pediatr* 1997; 130: 417–422.
39. Eldridge WB, Zhang Q, Faro A, et al. Outcomes of lung transplantation for infants and children with genetic disorders of surfactant metabolism. *J Pediatr* 2017; 184: 157–164.
40. Boston US, Fehr J, Gazit AZ, et al. Paracorporeal lung assist device: an innovative surgical strategy for bridging to lung transplant in an infant with severe pulmonary hypertension caused by alveolar capillary dysplasia. *J Thorac Cardiovasc Surg* 2013; 146: e42–43.
41. Khan MS, Heinle JS, Samayoa AX, et al. Is lung transplantation survival better in infants? Analysis of over 80 infants. *J Heart Lung Transplant* 2013; 32: 44–49.
42. Benden C, Edwards LB, Kucheryavaya AY, et al. The Registry of the International Society for Heart and Lung Transplantation: Sixteenth Official Pediatric Lung and Heart-Lung Transplantation Report—2013; focus theme: age. *J Heart Lung Transplant* 2013; 32: 989–997.
43. Hayes D Jr., Naguib A, Kirkby S, et al. Comprehensive evaluation of lung allograft function in infants after lung and heart-lung transplantation. *J Heart Lung Transplant* 2014; 33: 507–513.
44. Parera MC, van Dooren M, van Kempen M, et al. Distal angiogenesis: a new concept for lung vascular morphogenesis. *Am J Physiol Lung Cell Mol Physiol* 2005; 288: L141–149.
45. Schachtner SK, Wang Y and Scott Baldwin H. Qualitative and quantitative analysis of embryonic pulmonary vessel formation. *Am J Respir Cell Mol Biol* 2000; 22: 157–165.
46. Ameis D, Khoshgoo N and Keijzer R. Abnormal lung development in congenital diaphragmatic hernia. *Semin Pediatr Surg* 2017; 26: 123–128.
47. Schittny JC. Development of the lung. *Cell Tissue Res* 2017; 367: 427–444.
48. Galambos C, Sims-Lucas S, Ali N, et al. Intrapulmonary vascular shunt pathways in alveolar capillary dysplasia with misalignment of pulmonary veins. *Thorax* 2015; 70: 84–85.
49. Szafranski P, Gambin T, Dharmadhikari AV, et al. Pathogenetics of alveolar capillary dysplasia with misalignment of pulmonary veins. *Hum Genet* 2016; 135: 569–586.
50. Szafranski P, Dharmadhikari AV, Brosens E, et al. Small non-coding differentially methylated copy-number variants, including lncRNA genes, cause a lethal lung developmental disorder. *Genome Res* 2013; 23: 23–33.
51. Szafranski P, Herrera C, Proe LA, et al. Narrowing the FOXF1 distant enhancer region on 16q24.1 critical for ACDMPV. *Clin Epigenetics* 2016; 8: 112.
52. Fokkema IF, Taschner PE, Schaafsma GC, et al. LOVD v.2.0: the next generation in gene variant databases. *Hum Mutat* 2011; 32: 557–563.
53. Pierrou S, Hellqvist M, Samuelsson L, et al. Cloning and characterization of seven human forkhead proteins: binding site specificity and DNA bending. *EMBO J* 1994; 13: 5002–5012.
54. Dharmadhikari AV, Szafranski P, Kalinichenko VV, et al. Genomic and epigenetic complexity of the FOXF1 locus in 16q24.1: implications for development and disease. *Curr Genomics* 2015; 16: 107–116.
55. Mahlapuu M, Peltto-Huikko M, Aitola M, et al. FREAC-1 contains a cell-type-specific transcriptional activation domain and is expressed in epithelial-mesenchymal interfaces. *Dev Biol* 1998; 202: 183–195.
56. Peterson RS, Lim L, Ye H, et al. The winged helix transcriptional activator HFH-8 is expressed in the mesoderm of the primitive streak stage of mouse embryos and its cellular derivatives. *Mech Dev* 1997; 69: 53–69.
57. Mahlapuu M, Ormestad M, Enerback S, et al. The forkhead transcription factor Foxf1 is required for differentiation of

- extra-embryonic and lateral plate mesoderm. *Development* 2001; 128: 155–166.
58. Kalinichenko VV, Lim L, Stolz DB, et al. Defects in pulmonary vasculature and perinatal lung hemorrhage in mice heterozygous null for the Forkhead Box f1 transcription factor. *Dev Biol* 2001; 235: 489–506.
59. Bozyk PD, Popova AP, Bentley JK, et al. Mesenchymal stromal cells from neonatal tracheal aspirates demonstrate a pattern of lung-specific gene expression. *Stem Cells Dev* 2011; 20: 1995–2007.
60. Ormestad M, Astorga J, Landgren H, et al. Foxf1 and Foxf2 control murine gut development by limiting mesenchymal Wnt signaling and promoting extracellular matrix production. *Development* 2006; 133: 833–843.
61. Castro EC, Sen P, Parks WT, et al. The role of serotonin transporter in human lung development and in neonatal lung disorders. *Can Respir J* 2017; 2017: 9064046.
62. Mahlapuu M, Enerback S and Carlsson P. Haploinsufficiency of the forkhead gene Foxf1, a target for sonic hedgehog signaling, causes lung and foregut malformations. *Development* 2001; 128: 2397–2406.
63. Sen P, Gerychova R, Janku P, et al. A familial case of alveolar capillary dysplasia with misalignment of pulmonary veins supports paternal imprinting of FOXF1 in human. *Eur J Hum Genet* 2013; 21: 474–477.
64. Alsina Casanova M, Monteagudo-Sanchez A, Rodriguez Guerineau L, et al. Maternal mutations of FOXF1 cause alveolar capillary dysplasia despite not being imprinted. *Hum Mutat* 2017; 38: 615–620.
65. Sen P, Yang Y, Navarro C, et al. Novel FOXF1 mutations in sporadic and familial cases of alveolar capillary dysplasia with misaligned pulmonary veins imply a role for its DNA binding domain. *Hum Mutat* 2013; 34: 801–811.
66. Reiter J, Szafranski P, Breuer O, et al. Variable phenotypic presentation of a novel FOXF1 missense mutation in a single family. *Pediatr Pulmonol* 2016; 51: 921–927.