



The relationship between phylogenetic classification, virulence and antibiotic resistance of extraintestinal pathogenic *Escherichia coli* in İzmir province, Turkey

Elif Bozcal¹, Vahap Eldem², Sohret Aydemir³ and Mikael Skurnik⁴

¹ Department of Biology, Basic and Industrial Microbiology Section, Faculty of Science, Istanbul University, Istanbul, Turkey

² Department of Biology, Zoology Section, Faculty of Science, Istanbul University, Istanbul, Turkey

³ Department of Medical Microbiology, Faculty of Medicine, Ege University, İzmir, Turkey

⁴ Department of Bacteriology and Immunology, Medicum and Research Programs Unit, Immunobiology, University of Helsinki, Helsinki, Finland

ABSTRACT

Background. Extraintestinal pathogenic *Escherichia coli* (ExPEC) is an important bacterium and responsible for many bloodstream infections, including urinary tract infections and even fatal bacteremia. The aim of this research was to investigate whether ExPEC strains isolated from Turkish blood cultures have a relationship between 16S rRNA based phylogenetic clusters and antibiotic resistance profiles, virulence factors or clonal lineages.

Methods. Phenotypically identified ExPEC blood culture isolates ($n = 104$) were included in this study. The 16S rRNA partial sequence analysis was performed for genotypic identification of ExPEC isolates. Antibiotic susceptibility and Extended-Spectrum β -Lactamase testing of isolates were performed. Phylogenetic classification (A, B1, B2 and D), Multi Locus Sequence Typing analysis and virulence-associated genes were investigated.

Results. Based on 16S rRNA partial sequence analysis, 97 out of 104 (93.26%) ExPEC isolates were confirmed as *E. coli*. Ampicillin (74.22%) and cefuroxime axetil (65.97%) resistances had the highest frequencies among the ExPEC isolates. In terms of phylogenetic classification of ExPEC, D (38.14%, 37/97) was the most prevalent group after A (29.89%, 29/97), B2 (20.61%, 20/97), and B1 (11.34%, 11/97). The sequence types of the 20 ExPEC isolates belonging to the B2 phylogenetic group were analyzed by Multi Locus Sequence Typing. Ten isolates out of 20 (50.0%) were identified as ST131. The other STs were ST95 ($n = 1$), ST14 ($n = 1$), ST10 ($n = 1$), ST69 ($n = 1$), ST1722 ($n = 2$), ST141 ($n = 1$), ST88 ($n = 1$), ST80 ($n = 1$), and ST998 ($n = 1$). Of the ST131 strains, six (60%, 6/10) represented serogroup O25. The most common virulence factor genes were serum resistance factor gene, *traT* (55.7%) aerobactin siderophore receptor and yersiniabactin encoding genes *iutA* (45.3%) and *fyuA* (50.5%), respectively. In addition, PAI (41.2%), *iroN* (23.7%), *hlyA* (15.4%), *kpsII* (13.4%), *ompT* (13.4%), *papG* (12.4%), *iss* (9.3%), *cnf1* (7.2%), *ibeA* (2.06%), and *sfaS* (2.06%) genes were present in the ExPEC isolates.

Submitted 14 February 2018

Accepted 21 July 2018

Published 24 August 2018

Corresponding author

Elif Bozcal, elif.bozcal@istanbul.edu.tr

Academic editor

Valeria Souza

Additional Information and
Declarations can be found on
page 17

DOI 10.7717/peerj.5470

© Copyright
2018 Bozcal et al.

Distributed under
Creative Commons CC-BY 4.0

OPEN ACCESS

Conclusion. The 16S rRNA-based phylogenetic relationship tree analysis showed that a large cluster was present among 97 ExPEC isolates along with related reference strains. There were 21 main clusters with 32 closely related subclusters. Based on our findings, different clonal lineages of ExPEC can display different antibiotic susceptibilities and virulence properties. We also concluded that virulence factors were not distributed depending on phylogenetic groups (A, B1, B2, and D). The ExPEC isolates belonging to the same phylogenetic group and sequence type could display different resistance and virulence characteristics.

Subjects Microbiology, Epidemiology, Infectious Diseases, Public Health

Keywords *Escherichia coli*, 16S rRNA, antibiotic resistance, MLST, Virulence, ST131

INTRODUCTION

Escherichia coli (*E. coli*) is one of the most thoroughly studied bacterium of the human intestinal system (Koga et al., 2014). Despite the occurrence of commensal strains in the intestinal microbiota, *E. coli* can cause various infections not only in the intestinal system but also in the bloodstream. *E. coli* that can cause infections outside the intestinal system are designated as extra intestinal pathogenic *E. coli* (ExPEC) (Ananias & Yano, 2008; Fratamico et al., 2016). ExPEC can initiate systemic infections by causing sepsis or bacteremia that may disseminate bacteria to tissues and organs including the urinary tract, central nervous system, and deep surgical wound areas (Chouikha et al., 2006; Lloyd et al., 2009).

ExPEC has been divided into four groups (A, B1, B2, and D) according to the phylogenetic classification. Pathogenic groups of ExPEC strains generally belong to groups B2 and D. However, commensal strains that survive in the intestinal system, i.e., non-pathogenic strains, are generally included in groups A or B1 (Clermont, Bonacorsi & Bingen, 2000). In addition to the phylogenetic grouping, Multi-Locus Sequence Typing (MLST) of ExPEC is a typing method used to identify clinically significant ExPEC ST lineages where strains fall into certain STs and/or ST complexes.

Pathogenic groups of ExPEC in relation to ST lineages are common worldwide. The most prevalent lineages of ExPEC are ST131/B2, ST127/B2, ST95/B2, ST73/B2, and ST69/D in the UK (Ciesielczuk et al., 2016). The most widespread lineages of ExPEC were ST95 followed by ST131 in the United States (Stephens et al., 2017). The B2/ST131 lineage is the most common in Italy (Cerquetti et al., 2010). Of the clonal groups of ST131, the percentage of Extended Spectrum β -lactamase (ESBL) producing ExPEC was 45.8% in Germany and 41% in southern of Europe and 39.9% in Turkey (Aktaş et al., 2017; Arvand, Moser & Pfeifer, 2013; Pomba et al., 2014).

ExPEC are generally encountered as urinary pathogens (Dale & Woodford, 2015). Accordingly, urinary tract-associated *E. coli* remain a health problem in Turkey (Koksal et al., 2017). Moreover, the prevalence of *E. coli* originating from urinary tract systems is over 50% in Turkey (Yilmaz et al., 2016a; Yilmaz et al., 2016b). Nevertheless, *E. coli* strains have been isolated from blood associated with bacteraemia in Turkey (Kaya et al., 2013).

A notable increase in antibiotic resistance generates difficulties in the treatment of extra intestinal infections caused by ExPEC (*Cerquetti et al., 2010; Matsumura et al., 2017*). ExPEC generally exhibits resistance to cephalosporins, fluoroquinolones, beta-lactams, and sulphonamides (*Blanco et al., 2011; Feglo et al., 2013*). In particular, CTX-M type ESBL producing ExPEC is significant in terms of public health. The ST131 lineages belong to the B2 group and are the most prevalent among ExPEC. Thus, ExPEC in the B2 phylogenetic group and ST131 lineages produce CTX-M type β -lactamase as well as fluoroquinolones resistant (*Arvand, Moser & Pfeifer, 2013*). Moreover, the H30 sub-lineage of ST131 has also emerged worldwide. The H30 sub-lineage of ST131 produces VIM-1 and KPC-3 carbapenemases in Italy (*Accogli et al., 2014*). Similarly, a high percentage of CTX-M type β -lactamase producing *E. coli* has been reported from Turkey (*Aktaş et al., 2017*).

ExPEC has a broad range of virulence factors (VFs), and they include genetically diverse strains. The VFs are encoded by chromosomal genes, and they are often located in pathogenicity islands (PAIs) or plasmids (*Dale & Woodford, 2015*). VFs are attributed to various bloodstream infections including urinary tract infection and septicaemia. The ExPEC is the main reason for infections out of the intestinal system. Thus, virulence factors generally comprise an iron acquisition system, surface structures, toxins and outer membrane proteins e.g., haemolysin, cytotoxic necrotizing factor, yersiniabactin, fimbriae, serum survival, and capsule synthesis (*Koga et al., 2014; Subashchandrabose & Mobley, 2015*).

Some ExPEC phylogenetic groups are responsible for various extraintestinal infections, and many ExPEC lineages are resistant to many antibiotics. The ExPECs studied here were isolated from blood samples in Turkish Hospital and had relationships among clonal lineages, antibiotic resistance, and virulence factors. Therefore, the aim of this study was to investigate phylogenetic relationship between virulence, clonal properties, and antibiotic resistance profiles among ExPEC isolates originated from Izmir Province in Turkey.

METHODS

Bacterial isolates

Presumed ExPEC isolates ($n = 104$) isolated from blood cultures were obtained from the bacterial culture collection of Ege University-Department of Medical Microbiology Laboratory. Ege University Hospital is a 1900–2000 bed capacity hospital. The clinical information on the ExPEC isolates is shown in [Fig. 1](#). All isolates were identified by MALDI-TOF Mass Spectrometry (BioMérieux, Craponne, France). The isolates were stored in Luria Bertani Broth (LB) with 50% glycerol at $-80\text{ }^{\circ}\text{C}$ until further analysis. Colonies with a metallic green sheen were selected after culturing the strains on Eosin Methylene Blue Agar (EMB) plates (Merck, Kenilworth, NJ, USA). The control strains, *E. coli* CFTO73 and *E. coli* O25b:H4 (JJ1886), were kindly provided by Prof. James R. Johnson (University of Minnesota, VA Medical Centre, USA). *Escherichia coli* O25:H4 (DSM 22664 strain) was purchased from German Collection of Microorganisms and Cell Cultures. The quality control strain *E. coli* ATCC 25922 was obtained from Ege University-Department of Medical Microbiology.

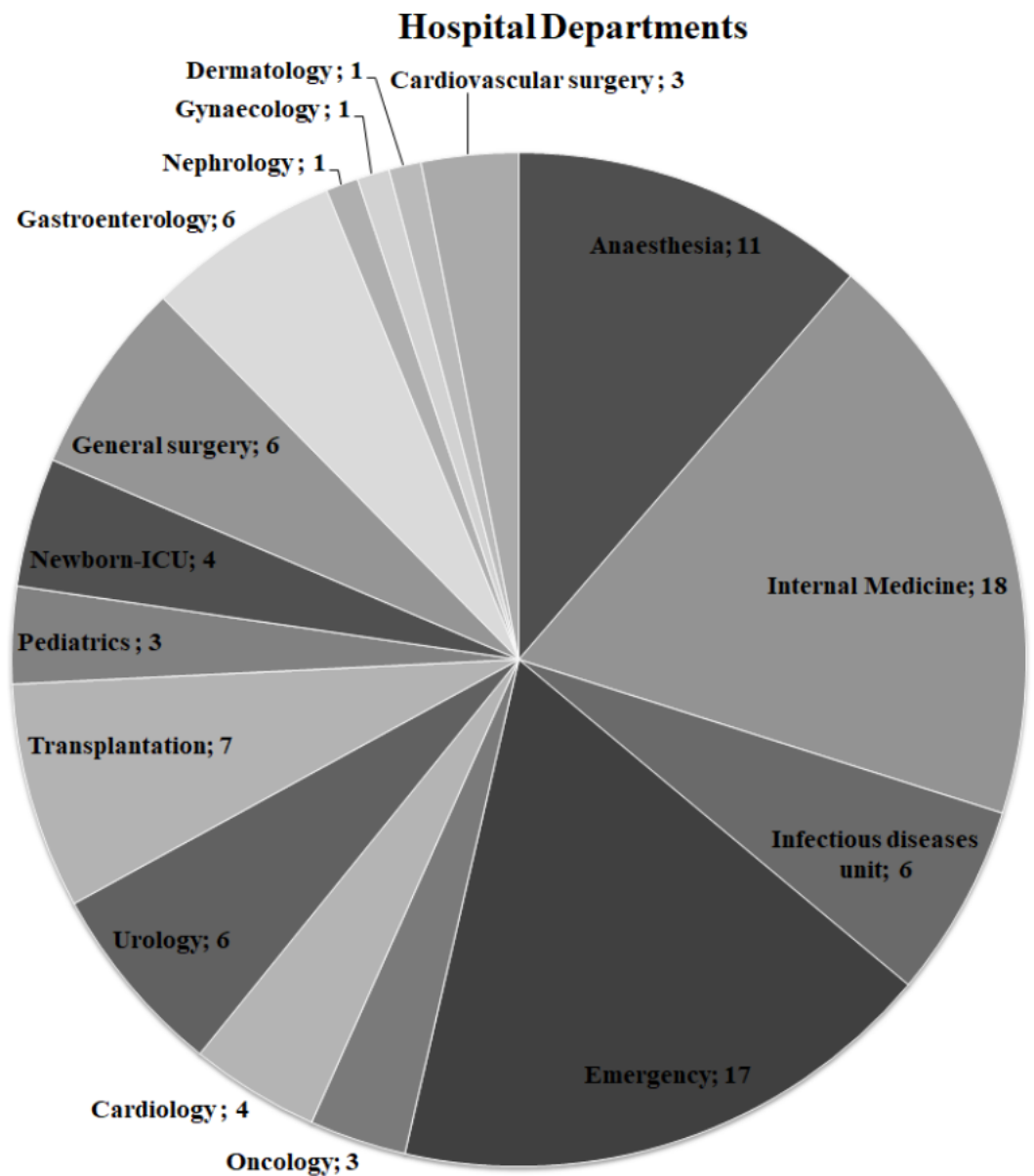


Figure 1 Distribution of hospital departments among ExPEC isolates. The number of departments where ExPEC isolates ($n = 97$) originated was shown on the pie chart. **Newborn-ICU**, Newborn- Intensive Care Unit

Full-size DOI: 10.7717/peerj.5470/fig-1

Antibiotic susceptibility testing

Antibiotic susceptibility and ESBL testing of the isolates was performed by an automated method (VITEK[®]2 BioMérieux). Susceptibility to 13 antibiotics including ampicillin, amoxicillin plus clavulanic acid, cefuroxime axetil, ceftriaxone, trimethoprim-sulfamethoxazole, cefepime, gentamicin, piperacillin/tazobactam, ciprofloxacin, amikacin, ertapenem, ceftazidime, and cefuroxime was tested using the Gram Negative Susceptibility card (AST-N325). Antibiotics for each isolate may vary because antibiotic susceptibility

testing was applied to all ExPEC isolates within routine diagnosis. The McFarland standard was 0.5 (1.5×10^8 cfu/ml). VITEK 2 cards were inoculated with *E. coli* bacterium via an integrated apparatus. The test tube with the bacterial suspension was placed into the cassette. Next, the AST card was inserted into the part of slot while inserting the transfer tube into the corresponding suspension tube. The prepared cassettes were transported into the chamber and incubated online at 35.5 ± 1.0 °C. *Escherichia coli* ATCC 25922 was used as a control strain. Interpretation of the antibiotic susceptibility testing results was performed using the guidelines from the Clinical & Laboratory Standards Institute (CLSI, 2013). The susceptibility results were obtained and reported as resistant (R), sensitive (S) and intermediate resistant (I). The MIC breakpoint ($\mu\text{g/ml}$) of each antibiotic was as follow: ampicillin (R8,I:- S \leq 8), amoxicillin plus clavulanic acid (R \geq 8, I = 16 S \leq 8), cefuroxime axetil (R \geq 8, I = 16 S \leq 8), ceftriaxone (R > 4, I = 2 and S \leq 1), trimethoprim-sulfamethoxazole (R \geq 4/76, I:- and S \leq 2/38), cefepime (R \geq 32, I = 16 and S \leq 8), gentamicin (R \geq 16, I = 8 and S \leq 4), piperacillin/tazobactam (R \geq 128, I = 32–64 and S \leq 16), ciprofloxacin (R \geq 4, I = 2 and S \leq 1), amikacin (R \geq 64, I = 32 and S \leq 16), ertapenem (R \geq 2, I = 1 and S \leq 0.5), ceftazidime (R \geq 16, I = 8 and S \leq 4) and cefuroxime (R \geq 32, I = 16, S \leq 8).

Genomic DNA Isolation

Isolation of the bacterial genomic DNA was performed using either the Wizard[®] Genomic DNA Purification Kit (Promega, Madison, WI, USA) or the JetFlex Genomic DNA Purification Kit (Thermo Fisher Scientific, Waltham, MA, USA). Plasmid DNA isolation was performed with a Pure Yield Plasmid MiniPrep System kit (Promega). Isolated DNA samples were stored at -20 °C for further analysis.

16S rRNA PCR

The 16S rRNA PCR analysis was modified from Frank *et al.* (2008). The 1,465 bp fragment of the 16S rRNA gene was amplified in a 50 μl reaction volume containing 1 \times PCR buffer (Thermo Fisher Scientific), 0.2 mM of each dNTP, 2 mM MgCl_2 , and 0.5 μM of each primer (16S rRNA universal primers: 27F and 1492R) (Table 1). The reaction conditions were of 2 min at 95 °C initial denaturation, 25 cycles of 1 min at 95 °C, 1 min at annealing temperature (55 °C), and 2 min at 72 °C followed by 10 min at 72 °C final extension. The PCR amplicons were analysed in agarose gel electrophoresis and visualized using the WiseDoc Gel Doc System WiseUV Transilluminator.

DNA sequence analysis

The resulting partial 16S rRNA gene PCR products were purified by BMLabosis (Ankara, Turkey) using the ExoSap-IT (Affymetrix) kit. The purified samples were sent to Macrogen (Amsterdam, The Netherlands) where the fragments were unidirectionally sequenced using the ABI 3730XL automated sequencer (Applied Biosystems, Foster City, CA, USA), and the BigDye Terminator v3.1 Cycle Sequencing Kit (Applied Biosystems). The resulting sequence reads were aligned and trimmed using the SILVA (Quast *et al.*, 2013) and DNA Baser Assembler Software programs, respectively. Before phylogenetic analysis, all ambiguously aligned regions and gaps were removed with trimAL (v1.4) using

Table 1 Primers used in this study.

Gene	Sequence (5' → 3')	Size (bp)	Description	Reference
<i>chuA</i>	GAC GAA CCA ACG GTC AGG AT	279	Hemetransport in Enterohemorrhagic O157:H7 <i>E.coli</i>	<i>Clermont, Bonacorsi & Bingen (2000)</i>
<i>yjaA</i>	TGC CGC CAG TAC CAA AGA CA TGA AGT GTC AGG AGA CGC TG ATG GAG AAT GCG TTC CTC AAC	211	Protein of function unknown	<i>Clermont, Bonacorsi & Bingen (2000)</i>
<i>TSPE4.C2</i>	GAG TAA TGT CGG GGC ATT CA	152	Putative DNA fragment (TSPE4.C2) in <i>E. coli</i>	<i>Clermont, Bonacorsi & Bingen (2000)</i>
<i>hlyA</i>	CGC GCC AAC AAA GTA TTA CG AAC AAG GAT AAG CAC TGT TCT GGC ACC ATA TAA GCG GTC ATT CCC GTC	1,777	Hemolysin	<i>Koga et al. (2014)</i>
<i>cnf1</i>	AAGATGGAG TTT CCT ATGCAGGAG CAT TCA GAG TCC TGC CCT CAT TAT T	498	Cytotoxic necrotizing factor 1	<i>Johnson & Stell (2000)</i>
<i>iutA</i>	GGC TGG ACA TCA TGG GAA CTG G CGT CGG GAA CGG GTA GAA TCG	302	Aerobactin siderophore receptor	<i>Koga et al. (2014)</i>
<i>fyuA</i>	TGA TTA ACC CCG CGA CGG AA CGC AGT AGG CAC GAT CTT GTA	880	Yersiniabactin	<i>Johnson & Stell (2000)</i>
<i>iroN</i>	AAT CCG GCA AAG AGA CGA ACC GCC T GTT CGG GCA ACC CCT GCT TTG ACT TT	553	Salmocheilin siderophore receptor	<i>Koga et al. (2014)</i>
<i>papG</i>	CTG TAA TTA CGG AAG TGA TTT CTG ACT ATC CGG CTC CGG ATA AAC CAT	1,070	P fimbriae	<i>Johnson & Stell (2000)</i>
<i>sfaS</i>	GTG GAT ACG ACG ATT ACT GTG CCG CCA GCA TTC CCT GTA TTC	240	Sfa fimbriae	<i>Johnson & Stell (2000)</i>
<i>iss</i>	CAG CAA CCC GAA CCA CTT GAT G AGC ATT GCC AGA GCG GCA GAA	323	Episomal increased serum survival	<i>Johnson et al. (2008)</i>
<i>traT</i>	GGT GTG GTG CGA TGA GCA CAG CAC GGT TCA GCC ATC CCT GAG	290	Serum resistance	<i>Johnson & Stell (2000)</i>
<i>ibeA</i>	AGG CAG GTG TGC GCC GCG TAC TGG TGC TCC GGC AAA CCA TGC	170	Invasion of brain endothelium	<i>Johnson & Stell (2000)</i>
<i>kpsMT II</i>	GCGCAT TTGCTGATA CTGTTG CAT CCA GAC GAT AAG CAT GAG CA	272	Capsule synthesis K1 e K5	<i>Johnson & Stell (2000)</i>
<i>ompT</i>	TCA TCC CGG AAG CCT CCC TCA CTA CTA T TAG CGT TTG CTG CAC TGG CTT CTG ATA C	496	Episomal outer membrane protease	<i>Koga et al. (2014)</i>
<i>rfb</i>	TACCGACGACGCCGATCTG TGCTATTCATTATGCGCAGC	300	O-typing O25b serotype	<i>Clermont et al. (2008)</i>

(continued on next page)

Table 1 (continued)

Gene	Sequence (5' → 3')	Size (bp)	Description	Reference
PAI	GGACATCCTGTTACAGCGCGCA TCGCCACCAATCACAGCCGAAC	930	pathogenicity-associated island (PAI) marker	<i>Johnson & Stell (2000)</i>
adk	ATTCTGCTTGGCGCTCCGGG CCGTCAACTTTCGCGTATTT	583	adenylate kinase	<i>Maluta et al. (2014), Wirth et al. (2006)</i>
fumC	TCACAGGTCGCCAGCGCTTC GTACGCAGCGAAAAAGATTC	806	fumarate hydratase	<i>Maluta et al. (2014), Wirth et al. (2006)</i>
gryB	TCGGCGACACGGATGACGGC ATCAGGCCTTCACGCGCATC	911	DNA gyrase	<i>Maluta et al. (2014), Wirth et al. (2006)</i>
icd	ATGGAAAGTAAAGTAGTTGTT CCGGCACA GGACGCAGCAGGATCTGTT	878	isocitrate/isopropylmalate dehydrogenase	<i>Maluta et al. (2014), Wirth et al. (2006)</i>
mdh	ATGAAAGTCGCAGTCCTCGGCGCT GCTGGCGG TTAACGAACTCCTGCCCCAGAGCG ATATCTTTCTT	932	malate dehydrogenase	<i>Maluta et al. (2014), Wirth et al. (2006)</i>
purA	CGCGCTGATGAAAGAGATGA CATACGGTAAGCCACGCAGA	816	adenylosuccinate dehydrogenase	<i>Maluta et al. (2014), Wirth et al. (2006)</i>
recA	CGCATTTCGCTTTACCCCTGACC AGCGTGAAGGTA AACCTGTG	780	ATP/GTP binding motif	<i>Maluta et al. (2014), Wirth et al. (2006)</i>
16S rRNA	AGAGTTTGATCCTGGCTCAG GGTTACCTTGTTACGACTT	1,465	16S rRNA, partial gene	<i>Suardana (2014)</i>

a heuristic best automated parameter “-automated1” and manually assessed (*Capella-Gutierrez, Silla-Martinez & Gabaldon, 2009*). The lengths of the good quality sequences ranged between 901 and 1,261 bp.

Phylogenetic classification based on 16S rRNA sequences

Nucleotide BLAST analysis was performed followed by TrimAI analysis. All 16S rRNA gene sequences were deposited in the NCBI GenBank database ([Dataset S1](#)). To ensure a reliable identification, the sequence similarities were analysed using the web-based SINA alignment service with the following criteria: reject sequences below 90% identity to consensus *E. coli* sequence and sequences with <700 nt in length (*Pruesse, Peplies & Glockner, 2012*). The multiple sequence alignment of 16S rRNA partial sequences was performed via the MUSCLE (*Edgar, 2004*). Clustering method was Neighbor Joining implemented in MEGA 7.0. (*Kumar, Stecher & Tamura, 2016*). The phylogenetic tree was inferred by using Maximum Likelihood method based on the Hasegawa–Kishino–Yano model (*Felsenstein, 1985*). The bootstrap consensus tree was constructed from 1,000 replicates. The visualization and sub-tree analysis of ExPEC isolates were implemented in MEGA 7.0 (*Kumar, Stecher & Tamura, 2016*). Bootstrap cut-off value ($\geq 75\%$) are given for each node. To compare the phylogenetic relationship of *E. coli* isolates with pathogenic and non-pathogenic ExPEC strains, The sub-tree analysis was involved 111 nucleotide sequences (ExPEC isolates ($n = 97$) and related reference ExPEC strains ($n = 14$)). The description and accession numbers of reference strains are shown in [Table 2](#).

Table 2 Extra intestinal pathogenic *Escherichia coli* (ExPEC) reference strains.

ID_NCBI	Strain	Description	Reference
<i>Escherichia coli</i> AP009378	SE15	<i>Escherichia coli</i> strain SE11 (O152:H28) isolated from feces of a healthy adult and classified into <i>E. coli</i> phylogenetic group B1	Toh et al. (2010)
<i>Escherichia coli</i> HG941718	EC958	<i>Escherichia coli</i> ST131 Urinary tract infection	Forde et al. (2014)
<i>Escherichia coli</i> CP006784	JJ1886	Highly Virulent CTX-M-15-Producing H30-Rx Subclone of <i>Escherichia coli</i> ST131	Andersen et al. (2013)
<i>Escherichia coli</i> CP002797	NA114	Multidrug-Resistant Uropathogenic <i>Escherichia coli</i> Strain	Avasthi et al. (2011)
<i>Escherichia coli</i> AE014075	CFT073	Uropathogenic <i>Escherichia coli</i> strain	Welch et al. (2002)
<i>Escherichia coli</i> CU928162	ED1a	Commensal strain-isolated in the 2000s from the faeces of a healthy man in France	Touchon et al. (2009)
<i>Escherichia coli</i> CP000243	UTI89	UTI89 is a uropathogenic <i>Escherichia coli</i> (UPEC) belonging to phylogroup B2	Chen et al. (2006)
<i>Escherichia coli</i> CP000468	APEC O1	Avian pathogenic <i>Escherichia coli</i> strain isolated from chickens and turkeys clinically diagnosed with colibacillosis	Johnson et al. (2007)
<i>Escherichia coli</i> CU928161	S88	Isolated in 1999 from the cerebro-spinal fluid of a new born with late-onset neonatal meningitis in France	Touchon et al. (2009)
<i>Escherichia coli</i> CU928163.2	UMN026	Extraintestinal pathogenic <i>Escherichia coli</i> strain (ExPEC) isolated from an acute cystitis patient in the USA in 1999	Touchon et al. (2009)
<i>Escherichia coli</i> AP009240	SE11	A commensal bacterium was isolated from the feces of a healthy human adult. It belongs to the <i>E.coli</i> phylogenetic group B1	Oshima et al. (2008)
<i>Escherichia coli</i> CU928160	IAI1	Isolated from the faeces at 1980s in France	Touchon et al. (2009)
<i>Escherichia coli</i> CP000948	DH10B	Strain DH10B is a derivative of the already sequenced K12	Durfee et al. (2008)
<i>Escherichia coli</i> U00096	K-12 (MG1655)	<i>Escherichia coli</i> strain K-12 was obtained from a stool sample of a diphtheria patient	Bachmann (1996); Blattner et al. (1997)

O25b typing

ExPEC isolates belonging to the Group B2 were evaluated for ST131 situation by O25b *rfb* detection (Clermont et al., 2009; Johnson et al., 2014). The allele-specific PCR, using the O25b type primers (Table 1) and the annealing temperature of 60 °C producing a PCR product of 300 bp was performed as described elsewhere (Clermont et al., 2008).

Determination of the ExPEC phylogenetic groups

Phylogenetic classification of the ExPEC strains into the A, B1, B2 and D groups used triplex PCR, based on amplification of *chuA* (a gene required for heme transport in enterohemorrhagic O157:H7 *E. coli*), *yjaA* (a gene detected from complete genome sequence of *E. coli* K-12 the function of which is unknown), and the DNA fragment TSPE4.C2 (from subtractive library of *E. coli*). The PCR used carried out in 50 µl final volume containing 1.25U DyNAzyme™ II DNA Polymerase (Thermo Fisher Scientific, Waltham, MA, USA) in 1× PCR buffer, 0.2 µM of each dNTP, 2 mM MgCl₂, and 1 µM of each primer (Table 1). The PCR program included denaturation at 95 °C for 4 min, followed by 30 cycles of 95 °C for 5 s and 55 °C for 10 s, with a final extension step at 72 °C for 5 min (Clermont, Bonacorsi & Bingen, 2000). During the determination of the phylogenetic classification of the ExPEC isolates, the *chuA* gene encoding heme transport in enterohemorrhagic O157:H7 was the first evaluation step for the assigning the B2 or D group.

Virulence factors

A total of 13 virulence factors (VFs) encoded by chromosome or plasmid, were investigated. The genes included the PAI marker, the adhesin genes (*papG*, *papC*, *sfaS*), the toxin genes (*hlyA*, *cnf1*), the capsule synthesis gene (*kpsII*), the siderophore genes (*fyuA*, *iroN*, *iutA*), the serum resistance genes (*iss* and *traT*), the brain microvascular endothelium invasion gene (*ibeA*), and the outer membrane protein gene (*ompT*) (Table 1). The VF gene detection was performed in the triplex, duplex, and/or standard PCR analysis (Triplex PCR: **1.set:** *cnf1*, *papG* and *sfaS*, **2.set:** *fyuA*, *iutA* and *IroN*. Duplex PCR: **1. Set:** *hlyA* and *kpsII*, **2. Set:** *iss* and *traT*, **3. Set:** PAI and *ibeA*. Standard PCR: *ompT*). PCR conditions were performed as follows: 1.25U DyNAzyme™II DNA Polymerase (Thermo Fisher Scientific) in 1x PCR buffer (Thermo Fisher Scientific), 0.2mM of each dNTP, 2 mM MgCl₂, and 1 μM of each primer (Table 1). The PCR program consisted of a 5 min initial denaturation at 95 °C, followed by 30 cycles of 95 °C for 1min, annealing at 55–68 °C for 1min, and extension at 72 °C for 1 min, and a final extension step at 72 °C for 10 min (Koga et al., 2014). *E. coli* CFTO73, *E. coli* O25b:H4 (JJ1886), and *E. coli* DSM 22664 strains were used as a control strain during the amplification of virulence factors.

Multi locus sequence typing

MLST analysis was used to the ST groups of the strains. PCR amplification and sequencing of seven housekeeping genes (*adk*, *fumC*, *gyrB*, *icd*, *mdh*, *purA* and *recA*) were carried according to the protocols obtained from (<http://mlst.warwick.ac.uk/mlst/dbs/Ecoli>). Primer sequences for MLST analysis were similarly obtained from <http://mlst.warwick.ac.uk/mlst/dbs/> (Table 1). The reaction mixture (50 μl) included 1.25U Tag DNA Polymerase (Thermo Fisher Scientific) in 1× PCR buffer (Thermo Fisher Scientific), 0.2mM of each dNTP, 3 mM MgCl₂, and 1 μM of each primer (Table 1). The PCR program consisted of a 2 min initial denaturation at 95 °C followed by 30 cycles of 1 min at 95 °C, 1 min at annealing temp (55–65 °C), and 2 min at 72 °C, followed by a 5 min final extension at 72 °C. The sequencing of the PCR amplicons was performed as described above. For the Sequence type assignment, amplicons were checked against to MLST sequence database (<https://pubmlst.org/>) (Jolley & Maiden, 2010). The accession numbers were deposited into the GenBank (MH279595–MH279614 and MH561267–MH561386).

RESULTS

Ninety-seven (93.26 %) of the obtained 104 tentative ExPEC isolates were confirmed to be *E. coli* based on 16S rRNA sequence analysis. The other isolates were identified as *Proteus mirabilis* (*n* = 2), *Shigella flexneri* (*n* = 2), and *Escherichia fergusonii* (*n* = 3). These the 97 ExPEC isolates were used for subsequent analysis.

The antibiotic susceptibility results (Table 3) showed that of the 97 strains 72 (74.22%) were ampicillin-resistant. A total of 31 isolates (31.95%) were resistant against the fluoroquinolone group antibiotic ciprofloxacin; 21 strains (21.65%) were susceptible to ampicillin and gentamicin (Dataset S2 and Table 3), and 53 strains (54.63%) produced ESBL. The antibiotic resistance of the ESBL-producing bacteria is shown in the Dataset S2.

Table 3 Antibiotic susceptibility profiles of the ExPEC isolates.

Antibiotic	Antibiotic susceptibility					
	R		I		S	
	<i>n</i>	%	<i>n</i>	%	<i>n</i>	%
Ampicillin	72	74.22	n.a.	n.a.	21	21.64
Amoxicillin clavulanic acid	38	39.17	n.a.	n.a.	n.a.	n.a.
Cefuroxime axetil	64	65.97	n.a.	n.a.	7	7.21
Ceftriaxone	56	57.73	n.a.	n.a.	n.a.	n.a.
Trimethoprim-sulfamethoxazole	55	56.70	n.a.	n.a.	20	41.7
Cefepime	47	48.45	6	6.18	n.a.	n.a.
Gentamicin	31	31.95	1	1.03	21	20.61
Piperacillin/tazobactam	29	29.89	16	16.49	n.a.	n.a.
Ciprofloxacin	31	31.95	1	1.03	8	8.24
Amikacin	n.a.	n.a.	18	18.55	2	2.06
Ertapenem	2	2.06	n.a.	n.a.	n.a.	n.a.
Ceftazidime	2	2.06	n.a.	n.a.	n.a.	n.a.
Cefuroxime	28	28.86	1	1.03	n.a.	n.a.

Notes.

n.a., not applicable; R, resistant; I, intermediate resistant; S, susceptible; n, number of ExPEC isolates.

The phylogenetic classification of ExPEC isolates *Clermont, Bonacorsi & Bingen (2000)* is shown in [Dataset S1](#). The most prevalent group was D with 37 strains (38.14%), followed by A, 29 strains (29.89%), B2 with 20 strains (20.61%), and B1 with 11 strains (11.34%). The *chuA* gene was observed in ExPEC isolates belonging to the B2 and D phylogenetic groups. Moreover, the *yjaA* gene was detected in only ExPEC isolates belonging to the B2 phylogenetic group. In other words, ExPEC isolates encoding *chuA* and *yjaA* genes were assigned to the B2 phylogenetic group ($n = 20$). The B2 phylogroup is associated with ST131 status (*Johnson et al., 2010*). Therefore, the B2 phylogroup isolates were examined for the presence of the O25b *rfb* allele and that was present in six strains ([Dataset S1](#), highlighted in light grey). Importantly, four of the strains (ID: 6, 16, 28 and 103) were fluoroquinolone (ciprofloxacin) resistant that is characteristic for this emerging clonal group of ExPEC strains.

Among the studied strains, the serum resistance gene *traT* was the most common (55.7%), followed by *fyuA* (50.5%), *iutA* (45.3%), PAI (41.2%), *iroN* (23.7%), *hlyA* (15.4%), *kpsII* (13.4%), *ompT* (13.4%), *papG* (12.4%), *iss* (9.3%), *cnfI* (7.2%), *ibeA* (2.06%), and *sfaS* (2.06%). One isolate (ID:56) carried eight, three isolates had seven, and six isolates had six VF genes, and altogether 12 isolates carried none. The distribution of VF genes is shown in [Dataset S1](#) and [Fig. 2](#). The numbers of virulence factor-associated genes per each ExPEC isolate were varied.

The ExPEC isolates originated from various hospital departments ([Fig. 1](#)). The ExPEC isolates originating from internal medicine ($n = 18$) belonged to the phylogenetic groups B2, A, B1, and D. Of these, isolates including ID: 3, ID: 22, ID: 24 and ID: 99 belonged to the B2 phylogenetic group. The emergency department ($n = 17$) had the most ExPEC isolates followed by internal medicine. Similarly, isolates originating from the emergency

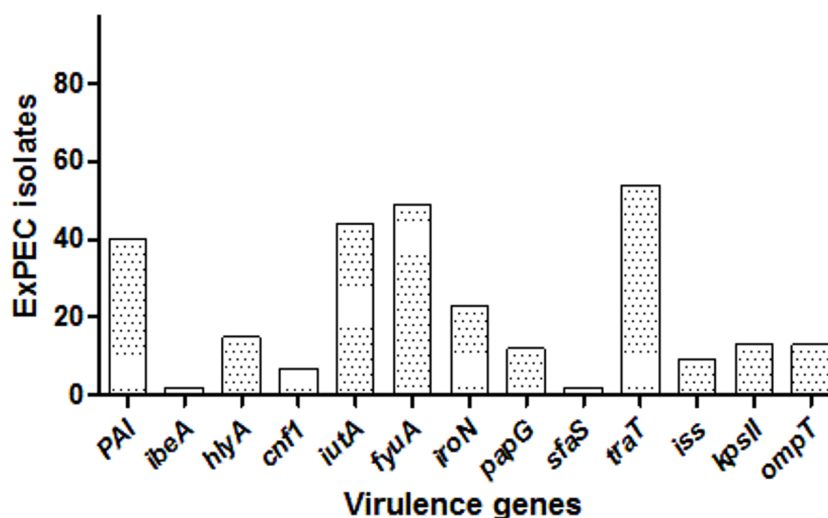


Figure 2 Distribution of virulence genes among ExPEC isolates. The bar plot was constructed for 97 ExPEC isolates to illustrate virulence genes distribution. The numbers presented at the top of bars demonstrated the number of virulence genes. PAI: pathogenicity-associated island (PAI) marker ($n = 40$), *ibeA*, Invasion of brain endothelium ($n = 2$); *hlyA*, hemolysin ($n = 15$); *cnf1*, cytotoxic necrotizing factor ($n = 7$); *iutA*, Aerobactin siderophore receptor ($n = 44$); *fyuA*, Yersiniabactin ($n = 49$); *iron*, Samochelin siderophore receptor ($n = 23$); *papG*, P fimbriae ($n = 12$); *sfaS*, Sfa fimbriae ($n = 2$); *iss*, Episomal increased serum survival; *traT*, serum resistance ($n = 54$), ($n = 9$); *kpsII*, Capsule synthesis K1 and K5 ($n = 13$); *ompT*, Episomal outer membrane protease ($n = 13$).

Full-size DOI: 10.7717/peerj.5470/fig-2

department belonged to phylogenetic groups B2, A, B1, and D. Of these, isolates including ID: 5, ID: 19 and ID: 88 belonged to the B2 phylogenetic group.

A phylogenetic tree based on the maximum likelihood method under the Hasegawa-Kishino-Yano model of 16S rRNA sequences was generated for the 111 strains including the 97 studied ExPEC isolates and 14 ExPEC related strains (Fig. 3, Table 2). The main clusters that were similar were conserved. These were identified via internal branches (<0.0000). The phylogenetic tree revealed the presence of a large strain cluster among 97 ExPEC isolates. Under the 21 main clusters, there were 32 sub clusters. The ExPEC isolates shown in the phylogenetic tree with blue filled circle, green filled circles, and red filled triangles were closely related (Fig. 3). The sub-cluster with empty blue squares was clustered with some of reference ExPEC strains including ED1a, S88, CFTO73, and APECO1. These reference strains were a commensal strain isolated from a healthy human, a neonatal meningitis isolate, an uropathogenic *E. coli*, and avian pathogenic *E. coli*, respectively. The ExPEC isolates including ID:4 (B2, ESBL +), ID: 6 (B2, ESBL +), ID: 101 (B2, ESBL +), ID: 31 (A, ESBL-), and ID: 36 (B1, ESBL +) were clustered with these reference strains.

The sub-cluster shown with filled yellow squares included 8 ExPEC isolates together with UTI89 which is uropathogenic *E. coli* belonging to the phylogenetic group B2. These were clustered together, and these isolates were closely related to reference strain UTI89 (Fig. 3). However, they belonged to the different phylogenetic groups including D, A, and B1 within this sub-cluster. However, the sub-cluster shown with filled black squares was included two ExPEC isolates within the same phylogenetic tree (ID: 100 (B2, ESBL +) and

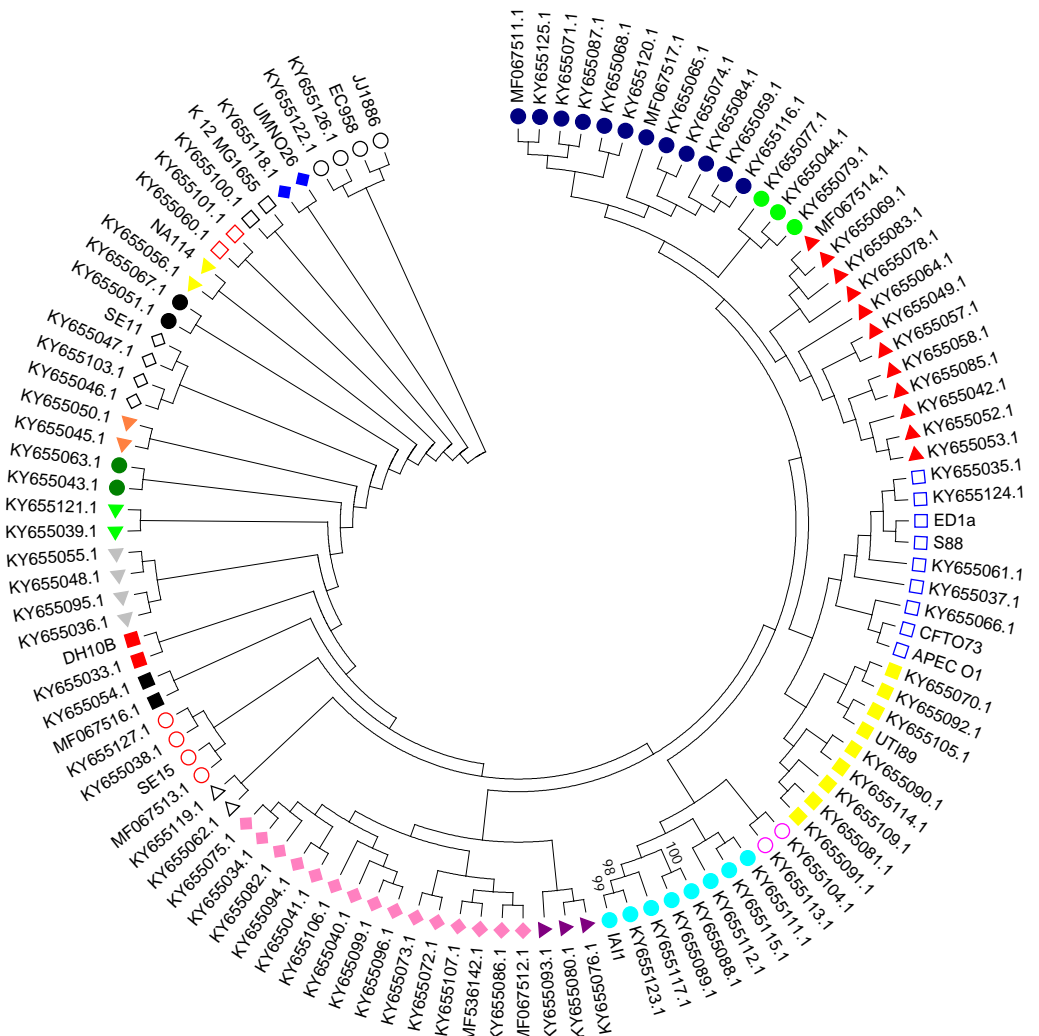


Figure 3 Phylogenetic tree of ExPEC blood culture isolates based on 16S rRNA analysis. The evolutionary history was inferred by using the Maximum Likelihood method based on the Hasegawa–Kishino–Yano model (Hasegawa, Kishino & Yano, 1985). The bootstrap consensus tree inferred from 1,000 replicates (Felsenstein, 1985) is taken to represent the evolutionary history of the taxa analyzed (Felsenstein, 1985). Branches corresponding to partitions reproduced in less than 50% bootstrap replicates are collapsed. Initial tree(s) for the heuristic search were obtained by applying the Neighbor-Joining method to a matrix of pairwise distances estimated using the Maximum Composite Likelihood (MCL) approach. The analysis involved 111 nucleotide sequences (97 ExPEC isolate sequences and of the 14 related ExPEC strain sequences fetched from the NCBI GenBank database). All positions containing gaps and missing data were eliminated. There were a total of 382 positions in the final dataset. Evolutionary analyses were conducted in MEGA7 (Kumar, Stecher & Tamura, 2016). The symbols shown in the tree indicative for the sub-clusters that were closely related (blue filled circle, green filled circle, and red filled triangle)-(empty blue square and filled yellow square)-(empty lilac circle and aqua filled circle)-(purple filled triangle and lilac filled rhomb)-(empty black triangle)-(empty red circle)-(black filled square)-(red filled square)-(grey filled triangle)-(lime filled triangle)-(dark green filled circle)-(orange filled triangle)-(empty black rhomb)-(black filled circle)-(yellow filled triangle)-(empty orange square)-(empty black square)-(blue filled rhomb)-(empty black circle).

Full-size DOI: 10.7717/peerj.5470/fig-3

Table 4 Sequence Type classification and allelic profiles of the phylogroup B2 of the ExPEC isolates.

Isolate ID	ST	<i>adk</i>	<i>fumC</i>	<i>gyrB</i>	<i>icd</i>	<i>mdh</i>	<i>purA</i>	<i>recA</i>	clonal complex	Phylogenetic classification	ESBL (+/-)	O25
3	131	53	40	47	13	36	28	29	ST131 Cplx	B2	+	+
4	131	53	40	47	13	36	28	29	ST131 Cplx	B2	+	+
5	95	37	38	19	37	17	11	26	ST95 Cplx	B2	-	
6	131	53	40	47	13	36	28	29	ST131 Cplx	B2	+	+
8	80	13	24	19	14	23	1	10	ST568 Cplx	B2	-	
16	131	53	40	47	13	36	28	29	ST131 Cplx	B2	+	+
17	14	14	14	10	14	17	7	10	ST14 Cplx	B2	-	
19	10	550	11	4	8	8	8	2	ST10 Cplx	B2	+	
22	69	21	35	27	6	5	5	4	ST69 Cplx	B2	-	
24	131	53	40	47	13	36	472	29	ST131 Cplx	B2	+	
28	131	53	40	47	13	36	28	29	ST131 Cplx	B2	+	+
39	131	53	40	47	13	36	28	29	ST131 Cplx	B2	+	
53	1722	101	4	97	29	70	158	2	None	B2	-	
88	141	13	52	10	14	17	25	17	None	B2	-	
95	131	53	40	47	13	36	28	29	ST131 Cplx	B2	+	
96	1722	101	4	97	29	70	158	2	None	B2	-	
99	88	518	4	12	1	20	12	7	ST23 Cplx	B2	+	
100	131	53	40	25	13	36	28	29	ST131 Cplx	B2	+	
101	998	13	52	156	14	17	25	17	None	B2	+	
103	131	53	40	47	13	36	28	29	ST131 Cplx	B2	+	+

Notes.

ESBL, Extended-Spectrum β -lactamase; O25, O25 serotype of ExPEC; ST, sequence type.

ID: 24 (B2, ESBL +)). In the sub-group shown as empty circle, 2 ExPEC isolates (ID: 103 (B2, ESBL +) and ID: 98 (A, ESBL-)) were closely related to JJ1886 which is a ST131 clone (Fig. 3 and Table 2).

MLST analysis is a standard technique used to compare phylogroups and determine ExPEC lineages (Dale & Woodford, 2015). Thereby, MLST analysis of 20 ExPEC isolates (Isolate IDs: 3, 4, 5, 6, 8, 16, 17, 19, 22, 24, 28, 39, 53, 88, 95, 96, 99, 100, 101, and 103) belonging to the B2 phylogenetic group was carried out. The ST of 10 isolates out of 20 was identified as ST131. The others represented STs ST95, ST14, ST10, ST69, ST1722, ST141, ST88, ST80 and ST998 (<https://pubmlst.org/>). The ExPEC isolates identified as ST131 and related alleles were found to be ESBL producers (Table 4). However, some ExPEC isolates included in the B2 phylogenetic group (Isolate ID: 5 (ST95), 8 (ST80), 17 (ST14) and 96 (ST1722)) had no antibiotic resistance. Insertion and/or deletion were detected in isolate ID:5 for the *adk* gene for allele 37. Other insertions and deletions were as follows: isolate ID:8 *adk* gene for allele 13, ID: 24 for the *adk* gene allele 53, ID:39 for the *adk* gene allele 53, ID:8 for the *recA* gene allele 10, and ID:16 for the *fumC* gene allele 40: 101^C \rightarrow 101^T.

DISCUSSION

ExPEC is a very important bacterium causing many extraintestinal infections including urinary tract infections and fatal bacteraemia. The pathogenicity of these bacteria may depend on a variety of virulence determinants (Dale & Woodford, 2015). ExPEC represents many complex phylogenetic groups, and several clonal groups and lineages are associated with many different human extraintestinal infections (Fratamico et al., 2016). The presence of multiple antibiotic resistances in different phylogenetic groups demonstrates the importance of ExPEC in terms of public health. In this study, ExPEC isolates were characterized in terms of phylogenetic relationships, virulence determinants, sequence types, and antibiotic resistance. We detected that 74.22% of the ExPEC isolates were resistant to ampicillin, and over 50% of ExPEC isolates have produced ESBL. The most prevalent phylogroups was D and A. Serum resistance, yersiniabactin, and pathogenicity islands were the most commonly encountered virulence determinants. The ExPEC isolates assigned to ST131 lineage were shown to be ESBL producers. Isolates (ID: 6, 16, 28, and 103) belonging to the ST131 O25 clonal group were resistant to ciprofloxacin which is a fluoroquinolone. The ExPEC isolates were mostly originated from emergency and internal medicine departments.

Antibiotic resistance against sulphonamides, fluoroquinolones, aminoglycosides, β -lactams including cephalosporins, and carbapenems, has been encountered among the ExPEC isolates (Blanco et al., 2011; Cerquetti et al., 2010; Feglo et al., 2013; Ranjan et al., 2016). In addition to the ampicillin resistance (74.22%), isolates studied here showed resistance to cefepime (4th generation cephalosporin, 48.45%), gentamicin (aminoglycoside, 31.95%), and piperacillin-tazobactam (β -lactam and β -Lactamase inhibitor, 29.89%), and trimethoprim-sulfamethoxazole (sulphonamide 56.70%) (Table 3). Due to the heterogeneity of the ExPEC isolates seen in different studies, the observed antibiotic resistance distribution seen here could be differentiated among the ExPEC isolates. For example, the ciprofloxacin resistance rate was low in the Japanese study (Matsumura et al., 2017); here, it was 31.95% among the ExPEC isolates (Table 3).

The ESBL-producing ExPEC causes difficulties in the treatment of extraintestinal infections, and this has been noted all around the world (Arvand, Moser & Pfeifer, 2013; Padmini et al., 2017). The ESBL type CTX-M poses the most threat to the public health. The incidence rates are variable: In Ghana, 49.4% of nosocomial ExPEC produced ESBL (Feglo et al., 2013) but 54.63% in this study. In Turkey, the CTX-M type β -lactamase producing *E. coli* increased from 53% in 2008 (Yumuk et al., 2008) to 83.5% in 2017 (Aktaş et al., 2017). This is likely due to the horizontal gene transfer among *E. coli* (Park et al., 2012). In particular, *E. coli* ST131 has been drawn particular attention in accordance with higher virulence and resistance profiles including CTX-M-15 type ESBL producing a clonal lineage (Chung et al., 2012; Peirano, Costello & Pitout, 2010). The ST131, ST95, ST998, ST73, and ST69 have been most common clonal lineages worldwide (Alghoribi et al., 2015; Colpan et al., 2013; Doumith et al., 2015). Here, we detected 10 different ST of which ST131 was most common. The others are listed in Table 4. We note that, we did not encounter any resistant isolates among the ST14, ST95, ST80 and ST1722 clonal lineages (Dataset S2), in

line with the observations that different ExPEC clonal lineages display different antibiotic susceptibilities (Doumith et al., 2015). Therefore, this could indicate that ExPEC in the same ST might be genetically diverse (Dale & Woodford, 2015).

Phylogenetic classification of ExPEC isolates can be performed based on the detection of the *chuA*, and *yjaA* genes, and particular DNA fragment known as TSPE4.C2 (Clermont, Bonacorsi & Bingen, 2000). Phylogenetic groups D and B2 of ExPEC have higher virulence in humans (Fratamico et al., 2016). Comparably, we detected D (38.14%, 37/97) and B2 (20.61%, 20/97) phylogenetic groups among ExPEC isolates. The detection rate of phylogenetic group A (29.8%, 29/97) was higher than phylogenetic group B2. In other studies, B2 was reported to be most common phylogenetic group in ExPEC (Koga et al., 2014; Micenikova et al., 2016). The B2 group has usually been associated with ST131 (Johnson et al., 2010). Our B2 phylogroup ExPECs were examined for the O25b *rfb* allele because serotype O25 and fluoroquinolone-resistant ExPECs are an emerging clonal group. This was present in 6 isolates (Dataset S1 light grey highlighted and Table 4). Of these, four (ID: 6, 16, 28 and 103) were fluoroquinolone resistant. Therefore, they may represent the ST131 O25 emerging clonal group (Dataset S2).

Virulence factors related to ExPEC pathogenicity are diverse and are generally divided into 5 main classes: adhesins, toxins, invasins, iron acquisition systems and capsule production. Finding a high prevalence of serum resistance factors among the strains is feasible because the strains were isolated from blood cultures where only serum-resistant pathogens could survive (Mijajlovic et al., 2016). Iron uptake systems include aerobactin and yersiniabactin siderophores. These are necessary for the bacteraemia and the emergence of a successful infection (Dale & Woodford, 2015; Subashchandrabose & Mobley, 2015). A high incidence of aerobactin siderophore (*iutA*) and yersiniabactin (*fyuA*) genes was found in this study (Dataset S1 and Fig. 2). However, we observed no correlation between phylogenetic groups and virulence genes distribution. While the ExPEC strains belonging to the phylogenetic group A are generally considered to be commensal strains and non-pathogenic, virulence factor genes including *fyuA* were observed in phylogenetic group A in this research. Accordingly, Cyoia et al. (2015) reported that *fyuA* was detected in commensal strains of ExPEC, and PAI was detected in B2 compared to other phylogenetic groups of ExPEC (Cyoia et al., 2015). Similarly, a higher incidence of PAI was detected in ExPEC isolates belonging to the phylogenetic groups B2 and D than in B1 and A. Therefore, ExPEC virulence factors could be detected in commensal *E. coli* strains. It can be inferred from that the acquisition of virulence factors in ExPECs belonging to the phylogenetic group A is associated with horizontal gene transfer of the mobile genetic elements e.g., pathogenicity islands, plasmids and phages. For instance, pathogenicity islands mediates integration regions for the virulence genes thus acquisition of the virulence genes can be occurred in the genomic region (Leimbach, Hacker & Dobrindt, 2013).

Johnson & Stell (2000) stated that there were associations among VFs. For example, by the *pap* and *hlyA*, *fyuA* and PAI markers. The *hlyA* and *pap* are associated virulence factors among B2 strains but not all of the B2 strains (Johnson & Stell, 2000). A few ExPEC isolates belonging to the B2 group had *hlyA* along with the *pap* gene (ID: 8 and ID: 17). However, other B2 strains had only the *hlyA* gene (IDs: 3, 6, 8, 17, 18 and 28). Our findings could

demonstrate that not all B2 strains have both *hlyA* and *pap*. Both the PAI marker and *fyuA* were detected among ExPEC isolates belonging to the phylogenetic groups B2 and D (Dataset S1). Therefore, it can be concluded that we did not observe any clear a virulence association among the ExPEC isolates.

Virulence factors related to ExPEC pathogenicity are variable ranging from colonisation to invasion factors required for the establishment and prolonged infection. Virulence factors could be associated with infection site including urinary tract infection-associated VFs, neonatal meningitis-associated VFs and bacteraemia-associated VFs (Dale & Woodford, 2015). Moreover, the VFs of ExPECs could be a molecular marker for contribution to other pathotypes of *E. coli* strains. For example, enteroinvasive *E. coli* may include VFs and genetic PAI markers related to uropathogenic *E. coli* (Da Silva, De Mello Santos & Silva, 2017).

The 16S rRNA sequences in the 111 ExPEC strains (Fig. 3, Dataset S1 and Table 2) were used for phylogenetic analysis. The phylogenetic tree was obtained via the maximum likelihood method and demonstrated a large cluster among the 97 ExPEC isolates. The 16S rRNA sequences are highly conserved, and they could not discriminate between the ExPEC isolates, as noted also elsewhere (Lukjancenko, Wassenaar & Ussery, 2010). However, 16S rRNA is useful for the studying bacterial phylogeny and phylogenetic relationships (Suardana, 2014). Nevertheless, closely related ExPEC isolates were observed in a bootstrap consensus tree are shown with blue filled circles, green filled circles, and red filled triangles (Fig. 3). Although the phylogenetic groups were different, phylogenetic group B2, D, and B1 were clustered together. Similarly, a close relatedness was observed between reference strains and ExPEC isolates. For example, EC958 and JJ1886 were clustered together with B2 and A phylogenetic groups (ID: 103 and ID: 98). The related reference strains were shown with empty circles (Fig. 3). Therefore, we can deduce that the ExPEC isolates from different phylogenetic groups could be clustered together.

CONCLUSIONS

The ExPEC strains has a broad range of virulence determinants and clonal lineages. Thus, certain problems can occur during the treatment of extraintestinal infections. An increased antibiotic resistance including β -lactamases could lead to the emerge of new pandemic clones. In line with other studies, we detected ampicillin resistance the most followed by cefuroxime axetil (cephalosporin) among ExPEC isolates included in this study. We also detected an antibiotic resistant ST131 clonal lineage along with other STs. These are among the most problematic clones worldwide. The detection of virulence factor genes in non-pathogenic phylogenetic groups A and B1 signified that the presence of the virulence genes might not be directly correlated to the phylogenetic group. Moreover, the high detection of serum resistance factors might be a prerequisite virulence factor for bacteria that cause systemic bloodstream infections. Also, yersinabactin could be a characteristic virulence factor for the bacteremic *E. coli* isolates. Moreover, ExPEC isolates belonging to the same phylogenetic group can have variable resistance and virulence properties.

ACKNOWLEDGEMENTS

This study was presented at the 10th Balkan Congress of Microbiology, 16–18 November 2017, Sofia, Bulgaria.

ADDITIONAL INFORMATION AND DECLARATIONS

Funding

This study was supported by The Scientific Research Unit of the Istanbul University with project ID: FUA-2016-20386 and ID: BYP-2016-2305. The funders had no role in study design, data collection and analysis, decision to publish, or preparation of the manuscript.

Grant Disclosures

The following grant information was disclosed by the authors:

The Scientific Research Unit of the Istanbul University: FUA-2016-20386, BYP-2016-2305.

Competing Interests

The authors declare there are no competing interests.

Author Contributions

- Elif Bozcal conceived and designed the experiments, performed the experiments, analyzed the data, contributed reagents/materials/analysis tools, prepared figures and/or tables, authored or reviewed drafts of the paper, approved the final draft.
- Vahap Eldem analyzed the data, authored or reviewed drafts of the paper, approved the final draft.
- Sohret Aydemir conceived and designed the experiments, performed the experiments, analyzed the data, contributed reagents/materials/analysis tools, authored or reviewed drafts of the paper, approved the final draft.
- Mikael Skurnik conceived and designed the experiments, analyzed the data, contributed reagents/materials/analysis tools, authored or reviewed drafts of the paper, approved the final draft.

DNA Deposition

The following information was supplied regarding the deposition of DNA sequences:

[MF067517.1–MF067511.1](#); [KY655127.1–KY655032.1](#); [MH279595–MH279614](#);
[MH561267–MH561386](#).

Ethics approval

The following information was supplied relating to ethical approvals:

Human subjects and patient specific data were not included in this study. ExPEC isolates were provided from Ege University-Department of Microbiology and Clinical Microbiology Laboratory within routine diagnosis, not for purposes of this study. For this reason, ethical explicitness was not necessary.

Data Availability

The following information was supplied regarding data availability:

The raw data are provided in [Supplemental Datasets](#).

Supplemental Information

Supplemental information for this article can be found online at <http://dx.doi.org/10.7717/peerj.5470#supplemental-information>.

REFERENCES

- Accogli M, Giani T, Monaco M, Giufre M, Garcia-Fernandez A, Conte V, D'Ancona F, Pantosti A, Rossolini GM, Cerquetti M. 2014. Emergence of *Escherichia coli* ST131 sub-clone H30 producing VIM-1 and KPC-3 carbapenemases, Italy. *Journal of Antimicrobial Chemotherapy* **69**:2293–2296 DOI [10.1093/jac/dku132](https://doi.org/10.1093/jac/dku132).
- Aktaş E, Otlu B, Erdemir D, Ekici H, Bulut E. 2017. A first insight into *Escherichia coli* ST131 high-risk clone among extended-spectrum beta-lactamase-producing urine isolates in Istanbul with the use of matrix-assisted laser desorption/ionization time-of-flight mass-spectrometry and real-time PCR. *Microbial Drug Resistance* **23**(8):1032–1036 DOI [10.1089/mdr.2017.0021](https://doi.org/10.1089/mdr.2017.0021).
- Alghoribi MF, Gibreel TM, Farnham G, Al Johani SM, Balkhy HH, Upton M. 2015. Antibiotic-resistant ST38, ST131 and ST405 strains are the leading uropathogenic *Escherichia coli* clones in Riyadh, Saudi Arabia. *Journal of Antimicrobial Chemotherapy* **70**:2757–2762 DOI [10.1093/jac/dkv188](https://doi.org/10.1093/jac/dkv188).
- Ananias M, Yano T. 2008. Serogroups and virulence genotypes of *Escherichia coli* isolated from patients with sepsis. *Brazilian Journal of Medical and Biological Research* **41**:877–883 DOI [10.1590/S0100-879X2008001000008](https://doi.org/10.1590/S0100-879X2008001000008).
- Andersen PS, Stegger M, Aziz M, Contente-Cuomo T, Gibbons HS, Keim P, Sokurenko EV, Johnson JR, Price LB. 2013. Complete genome sequence of the epidemic and highly virulent CTX-M-15-producing H30-Rx subclone of *Escherichia coli* ST131. *Genome Announcements* **1**:1–2 DOI [10.1128/genomeA.00988-13](https://doi.org/10.1128/genomeA.00988-13).
- Arvand M, Moser V, Pfeifer Y. 2013. Prevalence of extended-spectrum-beta-lactamase-producing *Escherichia coli* and spread of the epidemic clonal lineage ST131 in nursing homes in Hesse, Germany. *Journal of Antimicrobial Chemotherapy* **68**:2686–2688 DOI [10.1093/jac/dkt226](https://doi.org/10.1093/jac/dkt226).
- Avasthi TS, Kumar N, Baddam R, Hussain A, Nandanwar N, Jadhav S, Ahmed N. 2011. Genome of multidrug-resistant uropathogenic *Escherichia coli* strain NA114 from India. *Journal of Bacteriology* **193**:4272–4273 DOI [10.1128/JB.05413-11](https://doi.org/10.1128/JB.05413-11).
- Bachmann BJ. 1996. Derivations and genotypes of some mutant derivatives of *Escherichia coli* K-12. In: Neidhardt FC, ed. *Escherichia coli and Salmonella typhimurium cellular and molecular biology*. Washington, D.C.: ASM Press, 2460–2488.
- Blanco J, Mora A, Mamani R, Lopez C, Blanco M, Dahbi G, Herrera A, Blanco JE, Alonso MP, Garcia-Garrote F, Chaves F, Orellana MA, Martinez-Martinez L,

- Calvo J, Prats G, Larrosa MN, Gonzalez-Lopez JJ, Lopez-Cerero L, Rodriguez-Bano J, Pascual A. 2011. National survey of *Escherichia coli* causing extraintestinal infections reveals the spread of drug-resistant clonal groups O25b:H4-B2-ST131, O15:H1-D-ST393 and CGA-D-ST69 with high virulence gene content in Spain. *Journal of Antimicrobial Chemotherapy* 66:2011–2021 DOI 10.1093/jac/dkr235.
- Blattner FR, Plunkett 3rd G, Bloch CA, Perna NT, Burland V, Riley M, Collado-Vides J, Glasner JD, Rode CK, Mayhew GF, Gregor J, Davis NW, Kirkpatrick HA, Goeden MA, Rose DJ, Mau B, Shao Y. 1997. The complete genome sequence of *Escherichia coli* K-12. *Science* 277:1453–1462 DOI 10.1126/science.277.5331.1453.
- Capella-Gutierrez S, Silla-Martinez JM, Gabaldon T. 2009. trimAl: a tool for automated alignment trimming in large-scale phylogenetic analyses. *Bioinformatics* 25:1972–1973 DOI 10.1093/bioinformatics/btp348.
- Cerquetti M, Giufre M, Garcia-Fernandez A, Accogli M, Fortini D, Luzzi I, Carattoli A. 2010. Ciprofloxacin-resistant, CTX-M-15-producing *Escherichia coli* ST131 clone in extraintestinal infections in Italy. *Clinical Microbiology and Infection* 16:1555–1558 DOI 10.1111/j.1469-0691.2010.03162.x.
- Chen SL, Hung CS, Xu J, Reigstad CS, Magrini V, Sabo A, Blasiar D, Bieri T, Meyer RR, Ozersky P, Armstrong JR, Fulton RS, Latreille JP, Spieth J, Hooton TM, Mardis ER, Hultgren SJ, Gordon JL. 2006. Identification of genes subject to positive selection in uropathogenic strains of *Escherichia coli*: a comparative genomics approach. *Proceedings of the National Academy of Sciences of the United States of America* 103:5977–5982 DOI 10.1073/pnas.0600938103.
- Chouikha I, Germon P, Bree A, Gilot P, Moulin-Schouleur M, Schouleur C. 2006. A selC-associated genomic island of the extraintestinal avian pathogenic *Escherichia coli* strain BEN2908 is involved in carbohydrate uptake and virulence. *Journal of Bacteriology* 188:977–987 DOI 10.1128/JB.188.3.977-987.2006.
- Chung HC, Lai CH, Lin JN, Huang CK, Liang SH, Chen WF, Shih YC, Lin HH, Wang JL. 2012. Bacteremia caused by extended-spectrum-beta-lactamase-producing *Escherichia coli* sequence type ST131 and non-ST131 clones: comparison of demographic data, clinical features, and mortality. *Antimicrobial Agents and Chemotherapy* 56:618–622 DOI 10.1128/AAC.05753-11.
- Ciesielczuk H, Jenkins C, Chattaway M, Doumith M, Hope R, Woodford N, Wareham DW. 2016. Trends in ExPEC serogroups in the UK and their significance. *European Journal of Clinical Microbiology and Infectious Diseases* 35:1661–1666 DOI 10.1007/s10096-016-2707-8.
- Clermont O, Bonacorsi S, Bingen E. 2000. Rapid and simple determination of the *Escherichia coli* phylogenetic group. *Applied and Environmental Microbiology* 66:4555–4558 DOI 10.1128/AEM.66.10.4555-4558.2000.
- Clermont O, Dhanji H, Upton M, Gibreel T, Fox A, Boyd D, Mulvey MR, Nordmann P, Ruppe E, Sarthou JL, Frank T, Vimont S, Arlet G, Branger C, Woodford N, Denamur E. 2009. Rapid detection of the O25b-ST131 clone of *Escherichia coli* encompassing the CTX-M-15-producing strains. *Journal of Antimicrobial Chemotherapy* 64:274–277 DOI 10.1093/jac/dkp194.

- Clermont O, Lavollay M, Vimont S, Deschamps C, Forestier C, Branger C, Denamur E, Arlet G. 2008. The CTX-M-15-producing *Escherichia coli* diffusing clone belongs to a highly virulent B2 phylogenetic subgroup. *Journal of Antimicrobial Chemotherapy* 61:1024–1028 DOI [10.1093/jac/dkn084](https://doi.org/10.1093/jac/dkn084).
- Clinical and Laboratory Standards Institute (CLSI). 2013. *M100-S23: performance standards for antimicrobial susceptibility testing*. Wayne: Clinical and Laboratory Standards Institute.
- Colpan A, Johnston B, Porter S, Clabots C, Anway R, Thao L, Kuskowski MA, Tchesnokova V, Sokurenko EV, Johnson JR, Investigators V. 2013. *Escherichia coli* sequence type 131 (ST131) subclone H30 as an emergent multidrug-resistant pathogen among US veterans. *Clinical Infectious Diseases* 57:1256–1265 DOI [10.1093/cid/cit503](https://doi.org/10.1093/cid/cit503).
- Cyoia PS, Rodrigues GR, Nishio EK, Medeiros LP, Koga VL, Pereira AP, Vespero EC, Houle S, Dozois CM, Nakazato G, Kobayashi RK. 2015. Presence of virulence genes and pathogenicity islands in extraintestinal pathogenic *Escherichia coli* isolates from Brazil. *Journal of Infection in Developing Countries* 9:1068–1075 DOI [10.3855/jidc.6683](https://doi.org/10.3855/jidc.6683).
- Da Silva LC, De Mello Santos AC, Silva RM. 2017. Uropathogenic *Escherichia coli* pathogenicity islands and other ExPEC virulence genes may contribute to the genome variability of enteroinvasive *E. coli*. *BMC Microbiology* 17:68 DOI [10.1186/s12866-017-0979-5](https://doi.org/10.1186/s12866-017-0979-5).
- Dale AP, Woodford N. 2015. Extra-intestinal pathogenic *Escherichia coli* (ExPEC): disease, carriage and clones. *Journal of Infection* 71:615–626 DOI [10.1016/j.jinf.2015.09.009](https://doi.org/10.1016/j.jinf.2015.09.009).
- Doumith M, Day M, Ciesielczuk H, Hope R, Underwood A, Reynolds R, Wain J, Livermore DM, Woodford N. 2015. Rapid identification of major *Escherichia coli* sequence types causing urinary tract and bloodstream infections. *Journal of Clinical Microbiology* 53:160–166 DOI [10.1128/Jcm.02562-14](https://doi.org/10.1128/Jcm.02562-14).
- Durfee T, Nelson R, Baldwin S, Plunkett G, Burland V, Mau B, Petrosino JF, Qin X, Muzny DM, Ayele M, Gibbs RA, Csorgo B, Posfai G, Weinstock GM, Blattner FR. 2008. The complete genome sequence of *Escherichia coli* DH10B: insights into the biology of a laboratory workhorse. *Journal of Bacteriology* 190:2597–2606 DOI [10.1128/Jb.01695-07](https://doi.org/10.1128/Jb.01695-07).
- Edgar RC. 2004. MUSCLE: multiple sequence alignment with high accuracy and high throughput. *Nucleic Acids Research* 32:1792–1797 DOI [10.1093/nar/gkh340](https://doi.org/10.1093/nar/gkh340).
- Feglo P, Adu-Sarkodie Y, Ayisi L, Jain R, Spurbeck RR, Springman AC, Engleberg NC, Newton DW, Xi C, Walk ST. 2013. Emergence of a novel extended-spectrum-beta-lactamase (ESBL)-producing, fluoroquinolone-resistant clone of extraintestinal pathogenic *Escherichia coli* in Kumasi, Ghana. *Journal of Clinical Microbiology* 51:728–730 DOI [10.1128/JCM.03006-12](https://doi.org/10.1128/JCM.03006-12).
- Felsenstein J. 1985. Confidence limits on phylogenies: an approach using the bootstrap. *Evolution* 39:783–791 DOI [10.1111/j.1558-5646.1985.tb00420.x](https://doi.org/10.1111/j.1558-5646.1985.tb00420.x).

- Forde BM, Ben Zakour NL, Stanton-Cook M, Phan MD, Totsika M, Peters KM, Chan KG, Schembri MA, Upton M, Beatson SA. 2014. The complete genome sequence of *Escherichia coli* EC958: a high quality reference sequence for the globally disseminated multirug resistant *E. coli* O25b:H4-ST131 clone. *PLOS ONE* 9:e104400 DOI 10.1371/journal.pone.0104400.
- Frank JA, Reich CI, Sharma S, Weisbaum JS, Wilson BA, Olsen GJ. 2008. Critical evaluation of two primers commonly used for amplification of bacterial 16S rRNA genes. *Applied and Environmental Microbiology* 74:2461–2470 DOI 10.1128/AEM.02272-07.
- Fratamico PM, DebRoy C, Liu Y, Needleman DS, Baranzoni GM, Feng P. 2016. Advances in molecular serotyping and subtyping of *Escherichia coli*. *Frontiers in Microbiology* 7:Article 644 DOI 10.3389/fmicb.2016.00644.
- Hasegawa M, Kishino H, Yano T. 1985. Dating of the human-ape splitting by a molecular clock of mitochondrial DNA. *Journal of Molecular Evolution* 22:160–174 DOI 10.1007/BF02101694.
- Johnson JR, Clermont O, Johnston B, Clabots C, Tchesnokova V, Sokurenko E, Junka AF, Maczynska B, Denamur E. 2014. Rapid and specific detection, molecular epidemiology, and experimental virulence of the O16 subgroup within *Escherichia coli* sequence type 131. *Journal of Clinical Microbiology* 52:1358–1365 DOI 10.1128/JCM.03502-13.
- Johnson JR, Johnston B, Clabots C, Kuskowski MA, Castanheira M. 2010. *Escherichia coli* sequence type ST131 as the major cause of serious multidrug-resistant *E. coli* infections in the United States. *Clinical Infectious Diseases* 51:286–294 DOI 10.1086/653932.
- Johnson JR, Stell AL. 2000. Extended virulence genotypes of *Escherichia coli* strains from patients with urosepsis in relation to phylogeny and host compromise. *Journal of Infectious Diseases* 181:261–272 DOI 10.1086/315217.
- Johnson TJ, Kariyawasam S, Wannemuehler Y, Mangiamele P, Johnson SJ, Doetkott C, Skyberg JA, Lynne AM, Johnson JR, Nolan LK. 2007. The genome sequence of avian pathogenic *Escherichia coli* strain O1:K1:H7 shares strong similarities with human extraintestinal pathogenic *E. coli* genomes. *Journal of Bacteriology* 189:3228–3236 DOI 10.1128/JB.01726-06.
- Johnson TJ, Wannemuehler Y, Doetkott C, Johnson SJ, Rosenberger SC, Nolan LK. 2008. Identification of minimal predictors of avian pathogenic *Escherichia coli* virulence for use as a rapid diagnostic tool. *Journal of Clinical Microbiology* 46:3987–3996 DOI 10.1128/JCM.00816-08.
- Jolley KA, Maiden MC. 2010. BIGSdb: scalable analysis of bacterial genome variation at the population level. *BMC Bioinformatics* 11:595 DOI 10.1186/1471-2105-11-595.
- Kaya O, Akcam FZ, Gonen I, Unal O, Ceylan T. 2013. Risk factors for bacteremia due to extended-spectrum beta-lactamase-producing *Escherichia coli* in a Turkish hospital. *The Journal of Infection in Developing Countries* 7:507–512 DOI 10.3855/jidc.2788.
- Koga VL, Tomazetto G, Cyويا PS, Neves MS, Vidotto MC, Nakazato G, Kobayashi RK. 2014. Molecular screening of virulence genes in extraintestinal pathogenic

- Escherichia coli* isolated from human blood culture in Brazil. *BioMed Research International* **2014**:Article 465054 DOI [10.1155/2014/465054](https://doi.org/10.1155/2014/465054).
- Koksal I, Yilmaz G, Unal S, Zarakolu P, Korten V, Mulazimoglu L, Tabak F, Mete B, Oguz VA, Gulay Z, Alp E, Badal R, Lob S. 2017.** Epidemiology and susceptibility of pathogens from SMART 2011-12 Turkey: evaluation of hospital-acquired versus community-acquired urinary tract infections and ICU- versus non-ICU-associated intra-abdominal infections. *Journal of Antimicrobial Chemotherapy* **72**:1364–1372 DOI [10.1093/jac/dkw574](https://doi.org/10.1093/jac/dkw574).
- Kumar S, Stecher G, Tamura K. 2016.** MEGA7: molecular evolutionary genetics analysis version 7.0 for bigger datasets. *Molecular Biology and Evolution* **33**:1870–1874 DOI [10.1093/molbev/msw054](https://doi.org/10.1093/molbev/msw054).
- Leimbach A, Hacker J, Dobrindt U. 2013.** E. coli as an all-rounder: the thin line between commensalism and pathogenicity. *Between Pathogenicity and Commensalism* **358**:3–32.
- Lloyd AL, Henderson TA, Vigil PD, Mobley HL. 2009.** Genomic islands of uropathogenic *Escherichia coli* contribute to virulence. *Journal of Bacteriology* **191**:3469–3481 DOI [10.1128/JB.01717-08](https://doi.org/10.1128/JB.01717-08).
- Lukjancenko O, Wassenaar TM, Ussery DW. 2010.** Comparison of 61 sequenced *Escherichia coli* genomes. *Microbial Ecology* **60**:708–720 DOI [10.1007/s00248-010-9717-3](https://doi.org/10.1007/s00248-010-9717-3).
- Maluta RP, Logue CM, Casas MR, Meng T, Guastalli EA, Rojas TC, Montelli AC, SadatSune T, De Carvalho Ramos M, Nolan LK, Da Silveira WD. 2014.** Overlapped sequence types (STs) and serogroups of avian pathogenic (APEC) and human extra-intestinal pathogenic (ExPEC) *Escherichia coli* isolated in Brazil. *PLOS ONE* **9**:e105016 DOI [10.1371/journal.pone.0105016](https://doi.org/10.1371/journal.pone.0105016).
- Matsumura Y, Noguchi T, Tanaka M, Kanahashi T, Yamamoto M, Nagao M, Takakura S, Ichiyama S, th JB. 2017.** Population structure of Japanese extraintestinal pathogenic *Escherichia coli* and its relationship with antimicrobial resistance. *Journal of Antimicrobial Chemotherapy* **72**:1040–1049 DOI [10.1093/jac/dkw530](https://doi.org/10.1093/jac/dkw530).
- Miajlovic H, Aogain MM, Collins CJ, Rogers TR, Smith SG. 2016.** Characterization of *Escherichia coli* bloodstream isolates associated with mortality. *Journal of Medical Microbiology* **65**:71–79 DOI [10.1099/jmm.0.000200](https://doi.org/10.1099/jmm.0.000200).
- Micenkova L, Bosak J, Vrba M, Sevcikova A, Smajs D. 2016.** Human extraintestinal pathogenic *Escherichia coli* strains differ in prevalence of virulence factors, phylogroups, and bacteriocin determinants. *BMC Microbiology* **16**:218 DOI [10.1186/s12866-016-0835-z](https://doi.org/10.1186/s12866-016-0835-z).
- Oshima K, Toh H, Ogura Y, Sasamoto H, Morita H, Park SH, Ooka T, Iyoda S, Taylor TD, Hayashi T, Itoh K, Hattori M. 2008.** Complete genome sequence and comparative analysis of the wild-type commensal *Escherichia coli* strain SE11 isolated from a healthy adult. *DNA Research* **15**:375–386 DOI [10.1093/dnares/dsn026](https://doi.org/10.1093/dnares/dsn026).
- Padmini N, Ajilda AAK, Sivakumar N, Selvakumar G. 2017.** Extended spectrum beta-lactamase producing *Escherichia coli* and *Klebsiella pneumoniae*: critical

- tools for antibiotic resistance pattern. *Journal of Basic Microbiology* 57:460–470 DOI 10.1002/jobm.201700008.
- Park SH, Byun JH, Choi SM, Lee DG, Kim SH, Kwon JC, Park C, Choi JH, Yoo JH. 2012.** Molecular epidemiology of extended-spectrum beta-lactamase-producing *Escherichia coli* in the community and hospital in Korea: emergence of ST131 producing CTX-M-15. *BMC Infectious Diseases* 12:149 DOI 10.1186/1471-2334-12-149.
- Peirano G, Costello M, Pitout JD. 2010.** Molecular characteristics of extended-spectrum beta-lactamase-producing *Escherichia coli* from the Chicago area: high prevalence of ST131 producing CTX-M-15 in community hospitals. *International Journal of Antimicrobial Agents* 36:19–23 DOI 10.1016/j.ijantimicag.2010.02.016.
- Pomba C, Lopez-Cerero L, Bellido M, Serrano L, Belas A, Couto N, Cavaco-Silva P, Rodriguez-Bano J, Pascual A. 2014.** Within-lineage variability of ST131 *Escherichia coli* isolates from humans and companion animals in the south of Europe. *Journal of Antimicrobial Chemotherapy* 69:271–273 DOI 10.1093/jac/dkt343.
- Pruesse E, Peplies J, Glockner FO. 2012.** SINA: accurate high-throughput multiple sequence alignment of ribosomal RNA genes. *Bioinformatics* 28:1823–1829 DOI 10.1093/bioinformatics/bts252.
- Quast C, Pruesse E, Yilmaz P, Gerken J, Schweer T, Yarza P, Peplies J, Glockner FO. 2013.** The SILVA ribosomal RNA gene database project: improved data processing and web-based tools. *Nucleic Acids Research* 41:D590–D596 DOI 10.1093/nar/gks1219.
- Ranjan A, Shaik S, Mondal A, Nandanwar N, Hussain A, Semmler T, Kumar N, Tiwari SK, Jadhav S, Wieler LH, Ahmed N. 2016.** Molecular epidemiology and genome dynamics of New Delhi metallo-beta-lactamase-producing extraintestinal pathogenic *Escherichia coli* strains from India. *Antimicrobial Agents and Chemotherapy* 60:6795–6805 DOI 10.1128/AAC.01345-16.
- Stephens CM, Adams-Sapper S, Sekhon M, Johnson JR, Riley LW. 2017.** Genomic analysis of factors associated with low prevalence of antibiotic resistance in extraintestinal pathogenic *Escherichia coli* sequence type 95 strains. *MSphere* 2:e00390-16 DOI 10.1128/mSphere.00390-16.
- Suardana IW. 2014.** Analysis of nucleotide sequences of the 16S rRNA gene of novel *Escherichia coli* strains isolated from feces of human and bali cattle. *Journal of Nucleic Acids* 2014:Article 475754 DOI 10.1155/2014/475754.
- Subashchandrabose S, Mobley HL. 2015.** Virulence and fitness determinants of uropathogenic *Escherichia coli*. *Microbiology Spectrum* 3:Article UTI-0015-2012 DOI 10.1128/microbiolspec.UTI-0015-2012.
- Toh H, Oshima K, Toyoda A, Ogura Y, Ooka T, Sasamoto H, Park SH, Iyoda S, Kurokawa K, Morita H, Itoh K, Taylor TD, Hayashi T, Hattori M. 2010.** Complete genome sequence of the wild-type commensal *Escherichia coli* strain SE15, belonging to phylogenetic group B2. *Journal of Bacteriology* 192:1165–1166 DOI 10.1128/JB.01543-09.
- Touchon M, Hoede C, Tenailon O, Barbe V, Baeriswyl S, Bidet P, Bingen E, Bonacorsi S, Bouchier C, Bouvet O, Calteau A, Chiappello H, Clermont O, Cruveiller S,**

- Danchin A, Diard M, Dossat C, Karoui ME, Frapy E, Garry L, Ghigo JM, Gilles AM, Johnson J, Le Bouguenec C, Lescat M, Mangenot S, Martinez-Jehanne V, Matic I, Nassif X, Oztas S, Petit MA, Pichon C, Rouy Z, Ruf CS, Schneider D, Tourret J, Vacherie B, Vallenet D, Medigue C, Rocha EP, Denamur E. 2009. Organised genome dynamics in the *Escherichia coli* species results in highly diverse adaptive paths. *PLoS Genetics* e1000344 DOI 10.1371/journal.pgen.1000344.
- Welch RA, Burland V, Plunkett 3rd G, Redford P, Roesch P, Rasko D, Buckles EL, Liou SR, Boutin A, Hackett J, Stroud D, Mayhew GF, Rose DJ, Zhou S, Schwartz DC, Perna NT, Mobley HL, Donnenberg MS, Blattner FR. 2002. Extensive mosaic structure revealed by the complete genome sequence of uropathogenic *Escherichia coli*. *Proceedings of the National Academy of Sciences of the United States of America* 99:17020–17024 DOI 10.1073/pnas.252529799.
- Wirth T, Falush D, Lan R, Colles F, Mensa P, Wieler LH, Karch H, Reeves PR, Maiden MC, Ochman H, Achtman M. 2006. Sex and virulence in *Escherichia coli*: an evolutionary perspective. *Molecular Microbiology* 60:1136–1151 DOI 10.1111/j.1365-2958.2006.05172.x.
- Yilmaz N, Agus N, Bayram A, Samlioglu P, Sirin MC, Derici YK, Hanci SY. 2016a. Antimicrobial susceptibilities of *Escherichia coli* isolates as agents of community-acquired urinary tract infection (2008–2014). *Turkish Journal of Urology* 42:32–36 DOI 10.5152/tud.2016.90836.
- Yilmaz Y, Tekkanat Tazegun Z, Aydin E, Dulger M. 2016b. Bacterial uropathogens causing urinary tract infection and their resistance patterns among children in Turkey. *Iranian Red Crescent Medical Journal* 18:e26610 DOI 10.5812/ircmj.26610.
- Yumuk Z, Afacan G, Nicolas-Chanoine MH, Sotto A, Lavigne JP. 2008. Turkey: a further country concerned by community-acquired *Escherichia coli* clone O25-ST131 producing CTX-M-15. *Journal of Antimicrobial Chemotherapy* 62:284–288 DOI 10.1093/jac/dkn181.