

RESEARCH ARTICLE

Open Access



# Co-localization of and interaction between duck enteritis virus glycoprotein H and L

Daishen Feng<sup>1,2†</sup>, Min Cui<sup>1,2†</sup>, Renyong Jia<sup>1,2,3\*</sup> , Siyang Liu<sup>1,2</sup>, Mingshu Wang<sup>1,2,3</sup>, Dekang Zhu<sup>1,3</sup>, Shun Chen<sup>1,2,3</sup>, Mafeng Liu<sup>1,2,3</sup>, Xinxin Zhao<sup>1,2,3</sup>, Yin Wu<sup>1,2,3</sup>, Qiao Yang<sup>1,2,3</sup>, Zhongqiong Yin<sup>3</sup> and Anchun Cheng<sup>1,2,3\*</sup>

## Abstract

**Background:** Duck Enteritis Virus (DEV), belonging to the  $\alpha$ -herpesvirus subfamily, is a linear double-stranded DNA virus. Glycoprotein H and L (gH and gL), encoded by UL22 and UL1, are conserved in the family of herpesviruses. They play important roles as gH/gL dimers during viral entry into host cells through cell-cell fusion. The interaction between gH and gL has been confirmed in several human herpesviruses, such as Herpes Simplex Virus (HSV), Epstein-Barr virus (EBV) and Human Cytomegalovirus (HCMV). In this paper, we studied the interaction between DEV gH and gL.

**Results:** Recombinant plasmids pEGFP-N-gH and pDsRED-N-gL were constructed successfully. Expressions of both DEV gH and gL were observed after incubation of COS-7 cells transfected with pEGFP-N-gH and pDsRED-N-gL plasmids after 12 h, respectively. Also, the co-localization of a proportion of the gH and gL was detected in the cytoplasm of COS-7 cells after co-transfection for 24 h. Then, pCMV-Flag-gL and pCMV-Myc-gH recombinant plasmids were constructed and co-transfected into COS-7 cells. It was showed that both gH and gL were tested with positive results through co-immunoprecipitation and Western-blotting.

**Conclusions:** Our results demonstrated not only the co-localization of DEV gH and gL in COS-7 cells, but also the interaction between them. It will provide an insight for the further studies in terms of protein-protein interaction in DEV.

**Keywords:** DEV, Glycoprotein H, Glycoprotein L, Interaction, Co-localization, Co-immunoprecipitation

## Background

Duck Enteritis Virus (DEV) is a linear double-stranded DNA virus, of the  $\alpha$ -herpesvirus subfamily [34]. Herpesviruses, consisting of core, capsid, tegument and envelope, are a large family of the linear double-stranded DNA group of viruses [27, 28]. It has three subfamilies including  $\alpha$ -,  $\beta$ - and  $\gamma$ - herpesvirus. The  $\alpha$ -herpesvirus contains: Herpes Simplex Virus 1 (HSV-1), Herpes Simplex Virus 2 (HSV-2), Varicella-zoster Virus (VZV), and Pseudorabies Virus (PRV);  $\beta$ -herpesvirus: Human Cytomegalovirus (HCMV), Human Herpesvirus 6 and 7 (HHV-6 and HHV-7); and  $\gamma$ -herpesvirus: Epstein-Barr virus (EBV) and Kaposi's sarcoma-associated herpesvirus (KSHV, also known as Human Herpesvirus 8 (HHV-8))

[5, 19, 32]. DEV, also known as Duck Plague Virus (DPV) and Anatid Herpesvirus 1 (AnHV-1), mainly causes acute and contagious infection to waterfowl. Until now, the duck enteritis virus is one of the most severe diseases that seriously affect economy in the worldwide duck industry [23, 39].

Glycoprotein H is highly conserved in the herpesviruses. Heterodimer gH/gL, commonly formed through non-covalent linkages, is of great importance to membrane fusion of the enveloped viruses and host cells [6]. It has been studied that in the process of HSV-1 and HCMV entry into host cells, gB, gH and gL are three essential glycoproteins for the cell-cell fusion [1, 2, 24, 26]. Firstly, glycoproteins of herpesviruses bind with their specifically cellular receptors, in order to attaching to the membrane of host cells [10]. Then, gB, as a fusogen, is activated by gH/gL through interaction, therefore the fusogenic function of gB is promoted [23, 24, 30]. The

\* Correspondence: [jiary@sicau.edu.cn](mailto:jiary@sicau.edu.cn); [chenganchun@vip.163.com](mailto:chenganchun@vip.163.com)

<sup>†</sup>Daishen Feng and Min Cui contributed equally to this work.

<sup>1</sup>Research Center of Avian Disease, College of Veterinary Medicine, Sichuan Agricultural University, Chengdu 611130, Sichuan, China

Full list of author information is available at the end of the article



function of connection between gB and gH/gL, also known as “core fusion machinery,” is essential for herpesviruses to initiate membrane fusion [15]. For example, the first step of EBV entry into Epithelial cells is tethering gH/gL to its cellular membrane receptors, including integrin  $\alpha\beta 5$ ,  $\alpha\beta 6$  and  $\alpha\beta 8$ , which will change the conformation of gH/gL delicately due to receptor-binding. Then, the heterodimer will interact with gB and trigger its fusogenic function [5, 10, 11]. Therefore, gH/gL is more likely a regulator in the process of cellular membrane fusion.

Recently, the three-dimensional crystal structures and interaction domains of gH/gL of HSV-2 and EBV gH/gL have been solved [8, 26], which helped immensely in understanding the structure and function of gH/gL. However, the functional mechanisms of gH/gL are complicated and diverse in different herpesviruses. For instance, although the structural conformation of gH/gL is generally homologous among HSV-2, EBV and HCMV, some differences still exist, including divided domains, interdomain packing angles and fragment antigen-binding regions of the neutralizing antibody [8, 10]. When gH binds gL at the N-terminal domain (H1) of HSV-2, gH/gL therefore forms a boot-like heterodimer with a  $\sim 60^\circ$  kink between domain H2 and H3 at the C terminus [8]. Similarly, comprising a kink between domains III and IV, the structure of HCMV gH/gL has the semblable boot-like heterodimer as HSV-2 [8–10, 26]. Furthermore, in most human herpesviruses, gL requires correct enfoldment to bind with gH. HSV-1 gL is more likely a scaffolding protein than a chaperone to traffic gH and promotes its surface expression, then gH anchors gL to the cell surface [12, 20, 33]. During membrane fusion, the fusogenic potential of HSV-1 gB is activated through interaction with gH/gL, before the alteration of gH/gL is initiated by gD [1, 4]. In short, the main function of HSV gH/gL is activating gB through direct interaction during entry of host cells.

Although the structure and function of gH/gL in some human herpesviruses have been studied to some extent, for example the interaction regions of gH and gL of HSV-2 and EBV have been studied and published already [8, 26], there is insignificant research data in the study of DEV gH and gL until now. According to the existence of gH/gL dimers in other herpesviruses, the hypothesis that DEV gH would interact with gL was proposed in this paper. In this study, the two expression plasmids, pEGFP-N-gH and pDsRED-N-gL, were co-transfected into COS-7 cells to analyze the co-localization of DEV gH and gL. Then, the co-immunoprecipitation (Co-IP) was conducted in order to detect the interactions between these two proteins. As a result, our study provided an evidence of interaction between DEV gH and gL, which will be helpful for the further study about the protein-protein interaction in DEV as well as other herpesviruses.

## Methods

### Virus and DNA extraction

The DEV CHv strain (GenBank No. JQ647509.1) was precured from Avian Disease Research Center of Sichuan Agricultural University. Monolayer cultures of duck embryo fibroblasts (DEFs) were infected with DEV CHv strain at a multiplicity of infection (MOI) of 0.1, which was incubated in Dulbecco's modified Eagle medium (DMEM) containing 10% fetal bovine serum (FBS). The use of duck embryos was approved by the Animal Ethics Committee of Sichuan Agricultural University (approval No. XF2014–18). Then, the cells were incubated at 37 °C until a cytopathic effect (CPE) appeared in about 80% of the cells. DNA of DEV was extracted from the infected cell lysis using DNA Extraction Kit for Virus (TianGen Biotech Co., LTD.).

### Primer design and PCR amplification

A bioinformatics analysis of DEV CHv genome sequence (GenBank No. JQ647509.1) was performed and a pair of primers was designed to amplify the truncate UL1 gene (UL1t). The forward primer UL1t-1F and reverse primer UL1t-1R were showed in Table 1 (the underlined sequences was restriction enzyme *Hind*III site).

Two pairs of primer were designed to amplify the UL1 and UL22 gene respectively, which encode the gL and gH of DEV respectively. The two pairs of primer for amplifying UL1 gene are seen in Table 1 as UL1-1F/1R and UL1-2F/2R respectively. The other two pairs of primer for amplifying UL22 gene are also shown in Table 1 as UL22-1F/1R and UL22-2F/2R respectively. The DEV CHv DNA was used as template. The PCR was performed with 10  $\mu$ L mixture as reactions containing 5  $\mu$ L PrimeSTAR (premix) DNA polymerase, 0.2  $\mu$ L each of primer at the concentration of around 5 nmol/OD, 0.4  $\mu$ L DNA template at the concentration of 280 ng/ $\mu$ L, and 4.2  $\mu$ L H<sub>2</sub>O. Then, the PCR amplification was performed in pre-denaturation at 98 °C for 2 min, denaturation at 98 °C for 10s, annealing at 55 °C for 30s, extension at 72 °C for 30s, and final extension at 72 °C for 10 min after 30 cycle repeats.

### Plasmid construction

Expression vectors pET-32a(+), pEGFP-C, pDsRED-N, pCMV-Flag and pCMV-Myc were available in the laboratory. After digested with both *Eco*RI and *Hind*III restriction enzymes respectively, the truncate DEV UL1 gene and vector pET-32a(+) were both linked to the recombinant expression plasmid pET-32a(+)-UL1t with solution I ligase. Plasmids pEGFP-N-gH and pDsRED-N-gL were constructed in the same way as above by digestion with *Eco*RI and *Kpn*I, while the plasmid pCMV-Flag-gL was constructed by digestion with *Eco*RI and *Sall*, and pCMV-Myc-gH with *Eco*RI and

**Table 1** The primers of amplification for both DEV UL1 and UL22

Name of Primers	Primers	Restriction Enzyme
UL1t-F	5'- CCGGAATTCATGTACCCGGTTATCGAAGGAG – 3'	EcoRI
UL1t-R	5'- CCCAAGCTTTCGTCCGCCATGGTGTCCGGG – 3'	HindIII
UL1-1F	5'-CGGAATTCATGGGTTCCAGATGGAAGGC-3'	EcoRI
UL1-1R	5'- GGGGTACCCCTCGTCGCCATGGTGTCCGG – 3'	KpnI
UL1-2F	5'- CCGGAATTCATGGGTTCCAGATGGAAGGCC -3'	EcoRI
UL1-2R	5'-ACGCGTCGACCTATCGTCGCCATGGTGTCC -3'	Sall
UL22-1F	5'- CGGAATTCATGTCGCAGCTTACGGTGC -3'	EcoRI
UL22-1R	5'- GGGGTACCCCTTCTTATTGCTTAACAGTTC -3'	KpnI
UL22-2F	5'- CGGAATTCATGTCGCAGCTTACGGTG –3'	EcoRI
UL22-2R	5'- CCCTCGAGTCATTCTTATTGCTTAACAG – 3'	XhoI

*XhoI*. Once these plasmids were constructed successfully, they were identified by restriction enzyme digestion and nucleotide sequencing.

#### Antibodies

Mouse polyclonal antibody against DEV CHv gL was prepared with purified UL1t protein, and identified by both indirect immunofluorescence and western-blotting respectively, which was detailed in the next section. The anti-Flag mouse and anti-Myc rabbit polyclonal antibodies (Beyotime Institute of Biotechnology, China) were available in the laboratory.

#### Cells culture and transfection

COS-7 cell lines, available in the laboratory, were cultured in DMEM supplement with 10% FBS at 37 °C in 5% CO<sub>2</sub> incubator. Mixture of transfection reagent containing recombinant plasmids, DMEM, Lipofectamine 3000 and P3000 (Invitrogen, USA) were used to transfect COS-7 cells with 6-well plates. 250 µL of the transfection reagent was seeded into each well of 6-well plates containing COS-7 cells at densities of 78–80%. DMEM was supplemented in each well up to 2 mL with 2% FBS. Then, the cells were cultured at 37 °C in 5% CO<sub>2</sub> incubator.

#### Preparation of DEV CHv anti-gL mouse polyclonal antibody

Recombinant plasmid pET-32a(+)-UL1t was transformed into *E. coli* Rosetta and induced to expression for 2 h, 3 h, 4 h and 5 h with 1 mM IPTG at 37 °C to ensure the best induced time, and induced to expression with 0.2, 0.4, 0.6, 0.8, 1.0 mM IPTG at 37 °C for 4 h to ensure the best concentration of IPTG. Then, UL1t protein was induced with 0.6 mM IPTG at 37 °C for 4 h following purified with nickel agarose to bind with the His-tag of the pET-32a(+)-UL1t plasmid. Finally, the purified UL1 protein was confirmed by SDS-PAGE analysis (data not shown). Four male Kunming mice (Chengdu Dashuo

Laboratory Animal Technology Co., Ltd) around 18-22 g of 6 weeks old were immunized with purified UL1t protein for four times at 4r week intervals. After immunization, the serum containing anti-gL polyclonal antibody was collected, and the euthanasia via cervical dislocation of mice was performed according to the Canadian Council on Animal Care (CCAC) guidelines and the American Veterinary Medical Association (AVMA) guidelines.

#### Indirect immunofluorescence assay

After plasmids transfection for 48 h, the cells were processed as follows: fixation with 4% paraformaldehyde, permeabilization of cells with 0.25% Triton-X100, and sealing with 5% BSA for 1 h separately. The cells were incubated with one of the following antibodies for 1 h: anti-Myc rabbit or anti-gL mouse polyclonal antibody (1:1000 dilution), and incubated with goat anti-rabbit IgG or goat anti-mouse IgG secondary antibodies (1:1000 dilution) for 1 h. Also, the cell nucleus was stained with 4',6-diamidino-2-phenylindole (DAPI). Finally, cells were observed by fluorescence microscopy (Nikon, Japan) [31].

#### Co-immunoprecipitation

Based on the protocol of Co-immunoprecipitation [14], the COS-7 cells were harvested in phosphate buffered saline (PBS) after co-transfection of experimental group (pCMV-Flag-gL and pCMV-Myc-gH recombinant plasmids), and control group (Control 1: pCMV-Flag-gL and pCMV-Myc or Control 2: pCMV-Flag and pCMV-Myc-gH plasmids) into COS-7 cells respectively for 48 h, followed by incubation in lysis buffer (containing 1% PMSF) for 30 min on ice. Then, the cells were centrifuged for 30 min in a 4 °C (Thermo Fisher Scientific, USA) and 14,000×g speed to pellet debris. SureBeads Magnetic Beads System (Bio-Red) was introduced in the Co-IP experiment. SureBeads Protein A was washed thrice in PBST and added 100 µL into every

200  $\mu$ L IP antibody (anti-Myc rabbit or anti-gL mouse polyclonal antibody) were used at dilutions of 1:1000). After incubation for 30 min at room temperature, the beads were pulled to the side of the tube by the Magnetic Racks, followed by discarding of the supernatant. After being washed three times with PBST, the beads were added into the lysates, and incubated at room temperature for 1 h. Finally, the beads were pulled to the side by the Racks, and washed three times with PBST, followed by mixing evenly with 1  $\times$  SDS loading buffer for analysis through Western blotting [2].

### Western blot

The extracts or lysates with loading buffer were electrophoresed by SDS-PAGE, and then electro-transferred to polyvinylidene fluoride (PVDF) membranes through trans-blot SD (Bio-Rad, USA). Membranes were incubated with one of the antibodies as follows: anti-gL mouse polyclonal antibody (1: 1000 dilution), anti-Flag mouse or anti-Myc rabbit polyclonal antibody (1: 1000 dilution). Then, either the HRP-conjugated goat anti-rabbit IgG or goat anti-mouse IgG (1: 3000 dilution) was incubated as secondary antibody. The membrane was washed three times by tris-buffered saline and tween 20 (TBST, containing 8 g NaCl, 0.2 g KCl, 3 g Tris-base, 0.05% Tween 20 in each 1 L, pH 7.4) after incubation with antibodies in each of the step above, and finally detected through ECL reagent [38].

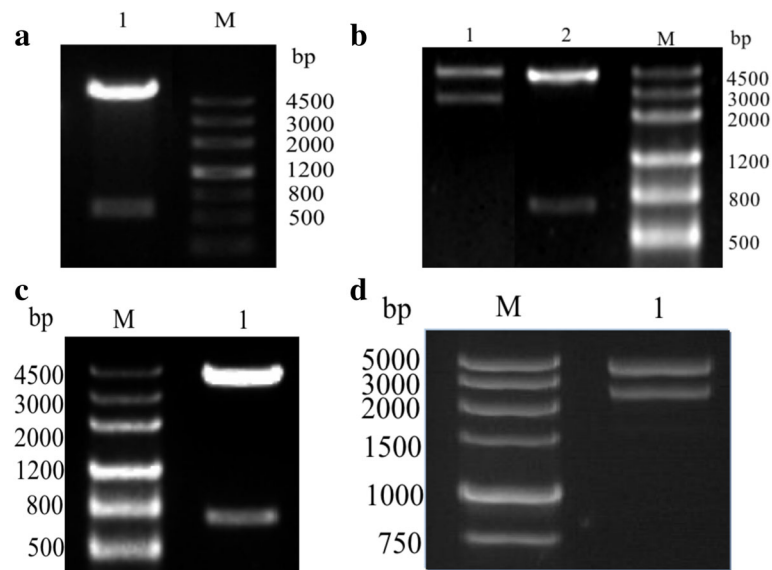
## Results

### Construction of the expression plasmids

Sequencings of amplified DEV CHv UL1 and UL22 were identified through alignment with known sequences published in NCBI. The structure of recombinant plasmid pET-32a(+)-UL1t was confirmed by digestion with the restriction enzymes *EcoRI* and *HindIII* (Fig. 1a) and sequencing. The plasmids pEGFP-N-gH and pDsRED-N-gL were also identified by digestion with *EcoRI* and *KpnI* (Fig. 1b), while the plasmid pCMV-Flag-gL was confirmed by digestion with *EcoRI* and *SalI* (Fig. 1c), and pCMV-Myc-gH with *EcoRI* and *XhoI* (Fig. 1d). These recombinant plasmids were further confirmed by sequencing analysis (data not shown).

### Intracellular localization of DEV gL and gH in COS-7 cells respectively

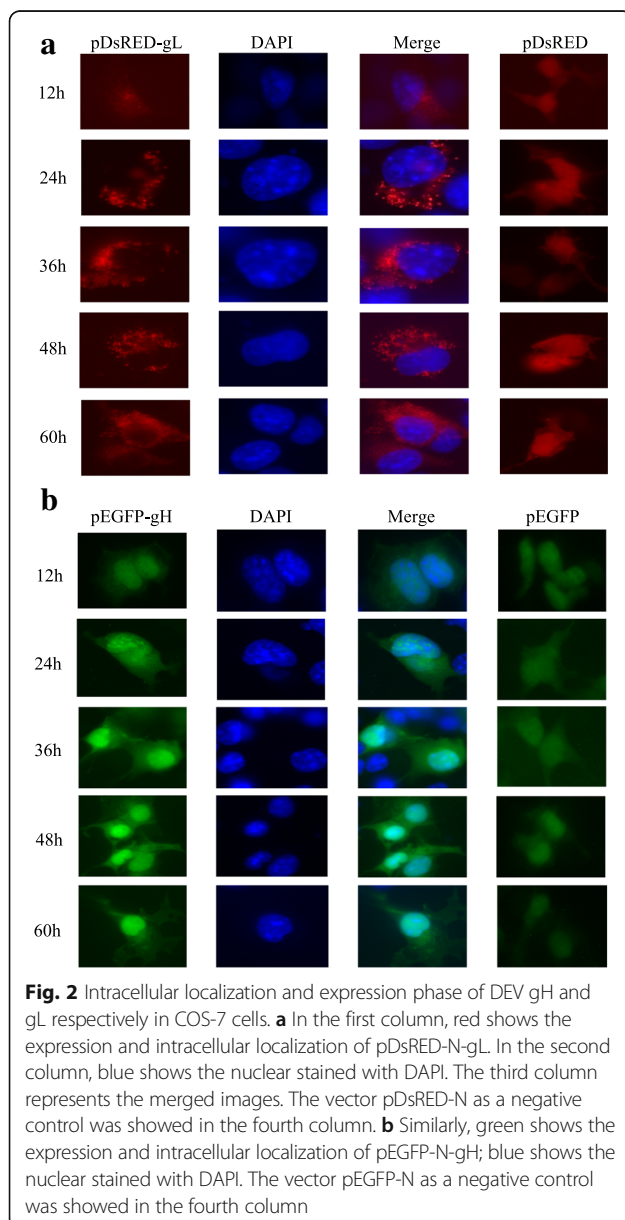
After transfection of COS-7 cells with pDsRED-N-gL and pEGFP-N-gH expression plasmids respectively, the cells were observed by fluorescence microscopy in 12 h, 24 h, 36 h, 48 h and 60 h. A red low fluorescence of plasmid pDsRED-N-gL was observed starting 12 h post transfection, with gradual increase in intensity from 24 h to 60 h, suggesting that the expression of gL started at 12 h and increased from 24 h to 60 h after transfection. The observation of red fluorescence also indicated the localization of expressed gL in COS-7. Compared with the even distribution in the cells of pDsRED (negative control), pDsRED-N-gL was randomly distributed as dots around the nucleus which was stained with DAPI



**Fig. 1** The identification of recombinant plasmids with enzyme digestion. The expression plasmids were identified through enzyme digestion. **a** Lane 1: pET32a (+)-UL1t digested with two target enzymes; M: DNA Marker. **b** Lane 1: pEGFP-N-gH digested with two target enzymes; Lane 2: pDsRED-N-gL digested with two target enzymes; M: DNA Marker. **c** Lane 1: pCMV-Flag-gL digested with two target enzymes; M: DNA Marker. **d** Lane 1: pCMV-Myc-gH plasmid digested with two target enzymes; M: DNA Marker.



in blue (Fig. 2a). Similarly, the observation of green fluorescence suggested the localization of expressed gH in COS-7. The green fluorescence of plasmid pEGFP-N-gH started at 12 h and increased from 24 h to 60 h after transfection. It also showed that pEGFP-N-gH was randomly distributed in the cytoplasm as well as the nucleus, while the EGFP was distributed in the entire cells at 12 h, 24 h, 36 h, 48 h and 60 h (Fig. 2b). Thus, the expression of both DEV gL and gH appears to have started at 12 h, and increased from 24 h to 60 h after transfection. Finally, gL localized in the cytoplasm while the gH localized in both of the cytoplasm and the nucleus in COS-7 cells.



### Co-localization of gH and gL in COS-7 cells

In order to ascertain the co-localization of gH and gL, the two plasmids pDsRED-N-gL and pEGFP-N-gH were co-transfected into COS-7 cells. The vectors pDsRED-N and pEGFP-N were co-transfected into COS-7 cells as negative controls. After the nucleus was stained with DAPI, the cells with co-transfection plasmids were observed through fluorescence microscope (Fig. 3). As seen in Fig. 2, pDsRED-N-gL expressed as red fluorescence while pEGFP-N-gH expressed as green fluorescence. The expression was detected at 24 h, and gradually increased until 60 h. Interestingly, when the expression signals of pDsRED-N-gL, pEGFP-N-gH and nucleus merged together, optically an orange fluorescence appeared at points throughout the cytoplasm. If merged results suggest that the orange dots represented the co-localization sites of gH and gL (Fig. 3), then the fluorescence microscope observation as described above indicates the partial co-localization of gH and gL in COS-7 cells.

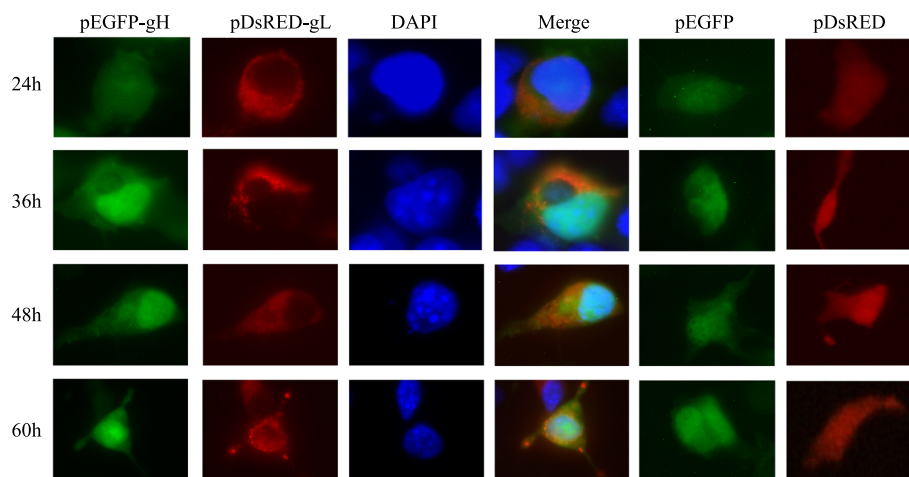
### Co-immunoprecipitation analysis of the interaction of gH and gL

- On the basis of the co-transfection protocols above, recombinant plasmids pCMV-Myc-gH and pCMV-Flag-gL were co-transfected into COS-7 cells. The expressions of gH and gL after co-transfection was identified through IFA (Fig. 4). Compared to the negative control, green and red fluorescence was detected after incubation with either anti-gL or anti-Myc specific antibody (Fig. 4a, b), indicating the expression of gL and gH in COS-7 cells respectively. After co-transfection of experimental and control group 1 or 2 into COS-7 cells for 48 h, the glycoproteins in the experiment group pulled down by anti-gL antibody and detected by anti-Myc antibody with western-blotting, showed in a band around 93 kDa (gH) (Fig. 5a). Similarly, the glycoproteins in experiment group pulled down by anti-Myc antibody and detected by anti-gL antibody, showed in a band around 27 kDa (gL) (Fig. 5a). No visible band was observed in either of the control groups (Fig. 5a).

Further, the input of either gL or gH was tested by Western-blot. The results showed a band around 93 kDa (gH) and a band around 27 kDa (gL), confirming the expression of gH and gL respectively in COS-7 cells (Fig. 5b). Thus, both western-blotting results of gH and gL confirmed the interaction between them, a phenomenon seen in line with our expectations.

### Discussion

The interaction between glycoprotein H and L has been confirmed in HSV, HCMV and EBV, and gH/gL is



**Fig. 3** Co-localization of DEV gH and gL in COS-7 cells. In the first column, green shows the localization of pEGFP-N-gH. In the second column, red shows the localization of pDsRED-N-gL. In the third column, blue shows the nuclear stained with DAPI. The merged image of co-localization of gH and gL was shown in the fourth column. The vectors pEGFP-N and pDsRED-N were shown as negative controls in the fifth and sixth columns

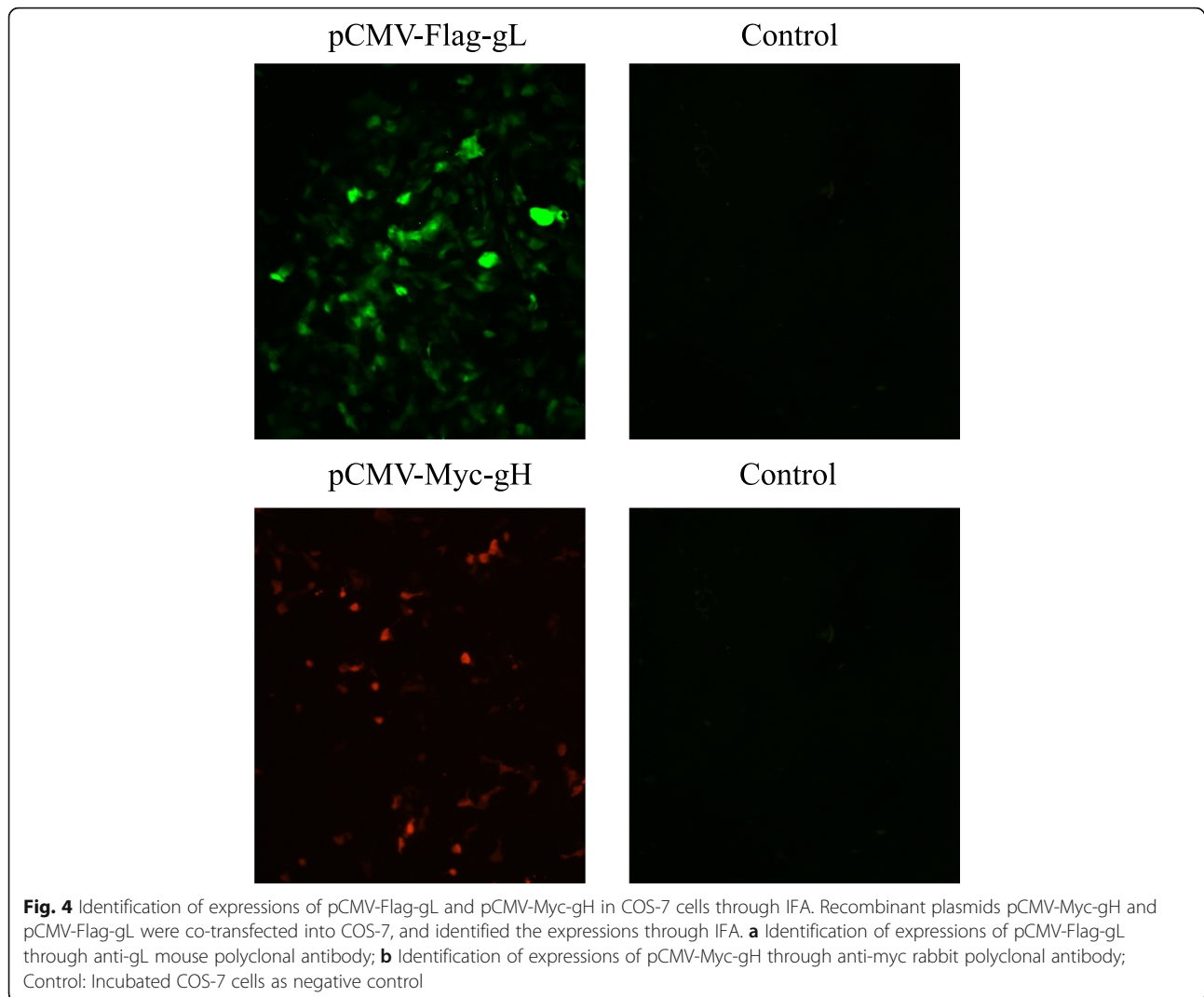
conserved in the herpesvirus family [3, 7, 29]. Since DEV belongs to  $\alpha$ -herpesvirus subfamily, the interaction of gH and gL was hypothesized in advance [3]. An analysis of the sequencings in GenBank and the prediction results generated using bioinformatics suggest that glycoprotein H is encoded by UL22 gene and has 834 amino acids (around 92.5 kDa) with one signal peptide and two transmembranes, while glycoprotein L, is encoded by UL1 gene, and has 234 amino acids (around 26.2 kDa) with one signal peptide but without a transmembrane region (data not shown).

An analysis of the similarities between DEV, HSV-2 and EBV was done by aligning the DNA sequence of both DEV gL and gH with either HSV-2 or EBV using the online alignment website ([https://www.ebi.ac.uk/Tools/psa/emboss\\_needle/nucleotide.html](https://www.ebi.ac.uk/Tools/psa/emboss_needle/nucleotide.html)). The alignment results showed that the percentage of similarity of DEV gH with HSV-2 and EBV is 39.4 and 34.4% respectively, while the percentage of similarity of DEV gL with HSV-2 and EBV is 42.6 and 33% respectively. It was suggested that either gH or gL of DEV show some similarities with gH or gL of HSV-2 and EBV (data not shown). In addition, previous studies have demonstrated that the interaction regions of gH and gL in both HSV-2 (H1 domain) and EBV (Domain-1) are located in the N terminal of gH [8, 26]. Based on the analysis of both DNA similarity and protein construction, the location of the interaction domain of DEV gH and gL was hypothesized as being somewhere in the N-terminal of gH. However, further studies are needed to localized the interaction sites of the DEV heterodimer [12].

Fluorescence proteins can be used to study the intracellular co-localization between two different proteins [22, 24]. IFA is also a valid technique to analyze the

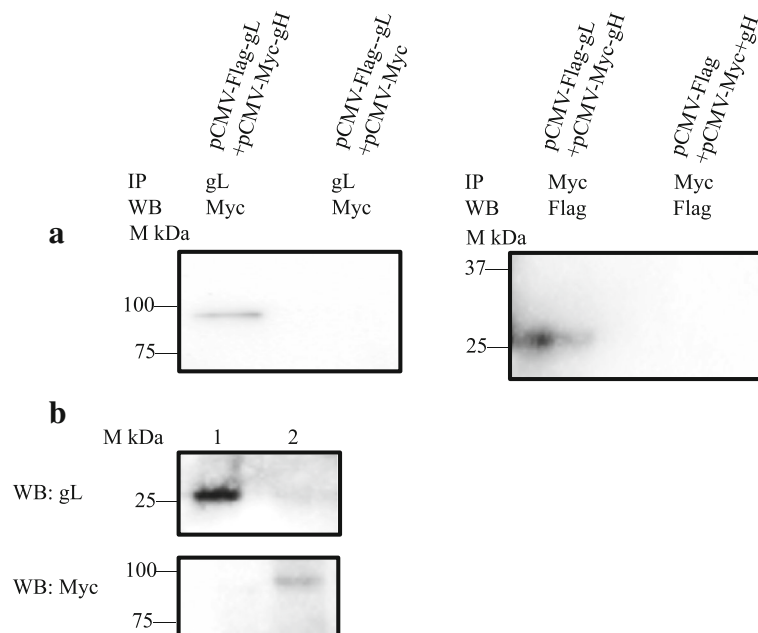
expression and co-localization between two proteins at present [35]. However, compared to the fluorescence method used in this study, IFA is more complicated in that requires antibody responses. The detection of intracellular localization is significant for studying both the co-localization and also the interaction between two proteins, because proteins which may have interaction must attach to each other [30]. Based on the results of co-transfection of pEGFP-N-gH and pDsRED-N-gL into COS-7 cells in this study, a number of co-localization sites were detected with the fluorescence microscope. Therefore, the possibility of an interaction between gH and gL in cytoplasm is plausible based on finding of the partial co-localization within the cell. The results also show that gL essentially localizes in the cytoplasm after transfection for more than 12 h, and gH is expressed in both the cytoplasm and nucleus over the same period. Theoretically, either gH or gL belongs to membrane glycoprotein, which should play an important role in the surface of host cells [19]. In this study, however, a transfection of recombinant plasmids into mammalian cells, instead of the naturally viral infection (in vivo) was conducted. Thus, the co-localization of gH and gL might provide a clue about the interaction, but it is not enough to fully confirm the protein-protein interaction.

Co-IP is an available and useful approach to test the interaction between two different proteins currently [25]. Some research has proved the protein-protein interaction through Co-IP assay [15, 37], although the quality of specific antibodies are significantly essential [25]. Basically, massive cellular protein-protein interactions remained, after non-denaturing cell lysis. Once protein B interacts with protein A, protein B is be drawn to the side of the tube together with protein A



by the Magnetic Racks, after the tethering of protein A with specific antibodies [13]. Thereafter, the existence of protein B with SDS-PAGE is tested, in order to confirm the interaction between protein A and B. In this paper, two experimental groups and two corresponding control groups were set respectively during the Co-IP assay. Contrary to the negative result in the control group, gH was detected when anti-gL antibody was used in Co-IP. Similarly, gL was detected when anti-Myc antibody (Myc-gH fusion protein) was used. Thus, detecting gH and gL respectively through SDS-PAGE, confirmed the interaction between gH and gL, on the basis of results of co-localization. The results from Co-IP are plausible because the bond between gH and gL is formed in a natural environment. It could be used to test not only the interaction between two or more proteins, but also the possible companion of specific receptors [13, 25].

In order to support the specific antibody during Co-IP experiment, the anti-gL mouse polyclonal antibody was prepared as a first step. Because gH protein could not be purified (data not shown), the Myc-gH tagged fusion protein was prepared for the subsequent test. Secondly, as both the gL and gH are membrane proteins of DEV, their interaction should occur on the cellular surface *in vivo*. However, instead of anti-gH antibody a Myc-tagged rabbit polyclonal antibody was used in the test, thus the Co-IP could not be conducted with both anti-gL and anti-gH specific antibodies. In other words, the interaction between gH and gL in natural state could not be tested. Although co-transfection of plasmids into mammalian cells could test the interaction of gH and gL as well, it neglects the possible scenario that the binding of gH and gL requires the intervention of a third protein [36], or the presence of some specific receptors [6, 16–18]. Based on the Co-IP results, however, the interaction was detected by



**Fig. 5** Co-immunoprecipitation of pCMV-Flag-gL and pCMV-Myc-gH. **a** COS-7 cells were co-transfected with experimental group (pCMV-Flag-gL + pCMV-Myc-gH) and control groups (pCMV-Flag-gL + pCMV-Myc or pCMV-Flag-gL + pCMV-Myc-gH) respectively. The uses of antibodies were as following: IP: anti-gL or anti-Myc polyclonal antibody for immunoprecipitation; WB: anti-Myc or anti-Flag polyclonal antibody for Western-blotting. **b** Recombinant plasmids pCMV-Flag-gL and pCMV-Myc-gH were co-transfected into COS-7 cells. Line 1: cellular extracts that analyzed by Western-blotting through anti-gL mouse polyclonal antibody; Line 2: Extracts that analyzed through anti-Myc rabbit polyclonal antibody

co-transfection with two recombinant plasmids (in vitro), suggesting that gH can interact with gL without other proteins or specific receptors. But it would be better if both anti-gH and anti-gL specific antibody could be used in the experiment.

Moreover, considering the important function of membrane proteins such as gH, gL and gB during the entry of herpesviruses into host cells, the interactions among these proteins with binding their specific receptors are indispensable [11, 18, 21]. For example, in human herpesviruses, gH/gL can bind with gD, gp42, gQ or UL128–131 before the viral entry into host cells [1, 2, 24, 26]. During membrane fusion between HSV and host cells, gH/gL is initiated by receptor-binding gD at the first step, before activating the fusogenic potential of gB [16]. Also, glycoprotein D is found to be one of the essential membrane proteins in DEV, and has a similar function to that known in other herpesviruses [11]. Therefore, the hypothesis that DEV gD may interact with gH/gL during the entry into host cells could be accepted. Since gH and gL are essential proteins for DEV, it could be hypothesized that gH/gL would bind with other glycoproteins to promote DEV entry into host cells. A further study of the structure and function of gH/gL will be helpful to the study of protein-protein interaction in DEV, and also to the study of cell-cell fusion between herpesviruses and host cells.

## Conclusions

This research paper describes the co-localization of some of DEV gH and gL in COS-7, as well as the interaction between them through co-immunoprecipitation. The results provide an insight to the study of protein-protein interaction in DEV. In addition, because gH and gL are essential proteins for DEV, further study of the function or construction of gH/gL could be helpful not only to the study of membrane fusion, but also to the study of immunology and prevention of DEV.

## Abbreviations

Co-IP: Co-Immunoprecipitation; COS-7: African green monkey kidney cells; DEFs: Duck embryonic fibroblasts; DEV: Duck enteritis virus; DMEM: Dulbecco's modified eagle's medium; EBV: Epstein-Barr Virus; FBS: Fetal bovine serum; HSV: Herpes simplex virus; IFA: Indirect immunofluorescence assay; IPTG: Isopropyl- $\beta$ -d-thiogalactoside; PBS: Phosphate buffered saline solution; SDS-PAGE: Sodium dodecyl sulfate polyacrylamide gel electrophoresis; TBST: Tris-buffered saline and tween 20

## Acknowledgments

We would like to thank our funding sources.

## Funding

Design of the study was supported by National Key Research and Development Program of China (2017YFD0500800), preparation of material was supported by National Key R & D Program (2016YFD0500800) and Sichuan Province Research Programs (2017JY0014/2017HH0026), collection, analysis, and interpretation of data were supported by China Agricultural Research System (CARS-43-8) and authors of this paper receive financially supported by Sichuan Province Research Programs (2017JY0014/2017HH0026).



**Availability of data and materials**

The datasets used and/or analyzed during the current study available from the corresponding author on reasonable request.

**Authors' contributions**

DSF and RYJ conceived and designed the experiments. DSF and MC performed the experiments. DSF, MC and RYJ analyzed the data. DSF drafted the manuscript; SYL and RYJ has revised the manuscript. ZQY, QY DKZ, XXZ and YW has contributed reagents, materials and analysis tools, SC and MFL contributed for English proofreading; MSW and ACC were responsible for revising the manuscript critically for expert content. All of the authors read and approved the final manuscript.

**Ethics approval and consent to participate**

Animal experiments were performed according to Chinese Regulations of Laboratory Animals and the approval license number was SYXK (Chuan) 2014–187, which was approved by the Animal Ethics Committee of Sichuan Agricultural University.

**Competing interests**

The authors declare that they have no competing interests.

**Publisher's note**

Springer Nature remains neutral with regard to jurisdictional claims in published maps and institutional affiliations.

**Author details**

<sup>1</sup>Research Center of Avian Disease, College of Veterinary Medicine, Sichuan Agricultural University, Chengdu 611130, Sichuan, China. <sup>2</sup>Institute of Preventive Veterinary Medicine, Sichuan Agricultural University, Chengdu 611130, Sichuan, China. <sup>3</sup>Key Laboratory of Animal Disease and Human Health of Sichuan Province, Chengdu 611130, Sichuan, China.

Received: 9 January 2018 Accepted: 24 July 2018

Published online: 29 August 2018

**References**

- Atanasiu D, Saw WT, Cohen GH, Eisenberg RJ. Cascade of events governing cell-cell fusion induced by herpes simplex virus glycoproteins gD, gH/gL, and gB. *J Virol*. 2010;84:12292–9.
- Beyer AR, Bann DV, Rice B, Pultz IS, Kane M, Goff SP, Golovkina TV, Parent LJ. Nucleolar trafficking of the mouse mammary tumor virus gag protein induced by interaction with ribosomal protein L9. *J Virol*. 2013;87:1069–82.
- Browne H. The role of glycoprotein H in herpesvirus membrane fusion. *Protein Pept Lett*. 2009;16:760–5.
- Campadelli-Fiume G, Menotti L, Avitabile E, Gianni T. Viral and cellular contributions to herpes simplex virus entry into the cell. *Curr Opin Virol*. 2012;2:28–36.
- Chang Y, Cesarman E, Pessin MS, Lee F, Culpepper J, Knowles DM, Moore PS. Identification of herpesvirus-like DNA sequences in AIDS-associated Kaposi's sarcoma. *Science*. 1994;266:1865–9.
- Cheshenko N, Trepanier JB, González PA, Eugenin EA, Jacobs WR, Herold BC. Herpes simplex virus type 2 glycoprotein H interacts with integrin  $\alpha v \beta 3$  to facilitate viral entry and calcium signaling in human genital tract epithelial cells. *J Virol*. 2014;88:10026–38.
- Chesnokova LS, Nishimura SL, Hutt-Fletcher LM. Fusion of epithelial cells by Epstein-Barr virus proteins is triggered by binding of viral glycoproteins gH/gL to integrins  $\alpha v \beta 6$  or  $\alpha v \beta 8$ . *P Natl Acad Sci*. 2009;106:20464–9.
- Chowdary TK, Cairns TM, Atanasiu D, Cohen GH, Eisenberg RJ, Heldwein E. Crystal structure of the conserved herpesvirus fusion regulator complex gH-gL. *Nat Struct Mol Biol*. 2010;17:882–8.
- Ciferri C, Chandramouli S, Donnarumma D, Nikitin PA, Cianfrocco MA, Gerrein R, Feire AL, Barnett SW, Lijja AE, Rappuoli R. Structural and biochemical studies of HCMV gH/gL/gO and Pentamer reveal mutually exclusive cell entry complexes. *Proc Natl Acad Sci*. 2015;112(6):1762–72.
- Connolly SA, Jackson JO, Jardtetzky TS, Longnecker R. Fusing structure and function: a structural view of the herpesvirus entry machinery. *Nat Rev Microbiol*. 2011;9:369–81.
- Eisenberg RJ, Atanasiu D, Cairns TM, Gallagher JR, Krummenacher C, Cohen GH. Herpes virus fusion and entry: a story with many characters. *Viruses*. 2012;4:800–32.
- Fan Q, Longnecker R, Connolly SA. A functional interaction between herpes simplex virus 1 glycoproteins gH/gL domains H-I and gD is defined using  $\alpha$ -herpesvirus gH and gL chimeras. *J Virol*. 2015; JM. 00740–00715
- Foltman M, Sanchez-Diaz A (2016) Studying protein-protein interactions in budding yeast using co-immunoprecipitation. *Yeast cytokinesis*. Springer, pp 239–256.
- Free RB, Hazelwood LA, Sibley DR. Identifying novel protein-protein interactions using co-immunoprecipitation and mass spectroscopy. *Curr Protocol Neur*. 2009; 5.28. 21–25.28. 14
- Gao X, Jia R, Wang M, Yang Q, Chen S, Liu M, Yin Z, Cheng A. Duck enteritis virus (DEV) UL54 protein, a novel partner, interacts with DEV UL24 protein. *Virol J*. 2017;14:166.
- Gianni T, Cerretani A, DuBois R, Salvioli S, Blystone SS, Rey F, Campadelli-Fiume G. Herpes simplex virus glycoproteins H/L bind to cells independently of  $\alpha v \beta 3$  integrin and inhibit virus entry, and their constitutive expression restricts infection. *J Virol*. 2010;84:4013–25.
- Gianni T, Salvioli S, Chesnokova LS, Hutt-Fletcher LM, Campadelli-Fiume G.  $\alpha v \beta 6$ - and  $\alpha v \beta 8$ -integrins serve as interchangeable receptors for HSV gH/gL to promote endocytosis and activation of membrane fusion. *Plos Pathog*. 9. 12 (2013): e1003806.
- Gianni T, Massaro R, Campadelli-Fiume G. Dissociation of HSV gL from gH by  $\alpha v \beta 6$ - or  $\alpha v \beta 8$ -integrin promotes gH activation and virus entry. *P Natl Acad Sci*. 2015;112:E3901–10.
- Heldwein E, Krummenacher C. Entry of herpesviruses into mammalian cells. *Cell Mol Life Sci*. 2008;65:1653–68.
- Hutchinson L, Browne H, Wargent V, Davis-Poynter N, Primorac S, Goldsmith K, Minson A, Johnson D. A novel herpes simplex virus glycoprotein, gL, forms a complex with glycoprotein H (gH) and affects normal folding and surface expression of gH. *J Virol*. 1992;66:2240–50.
- Hutt-Fletcher LM. Epstein-Barr virus entry. *J Virol*. 2007;81:7825–32.
- Koyama-Honda I, Ritchie K, Fujiwara T, Iino R, Murakoshi H, Kasai RS, Kusumi A. Fluorescence imaging for monitoring the colocalization of two single molecules in living cells. *Biophys J*. 2005;88:2126–36.
- Li Y, Bing H, Ma X, Jing W, Feng L, Wu A, Song M, Yang H. Molecular characterization of the genome of duck enteritis virus. *Virology*. 2009;391: 151–61.
- Lin M, Jia R, Wang M, Gao X, Zhu D, Chen S, Liu M, Yin Z, Wang Y, Chen X. Molecular characterization of duck enteritis virus CHv strain UL49. 5 protein and its colocalization with glycoprotein M. *J Vet Sci*. 2014;15:389–98.
- Masters SC. Co-immunoprecipitation from transfected cells. *Methods Mol Biol*. 2004;261:337.
- Matsuuura H, Kirschner AN, Longnecker R, Jardtetzky TS. Crystal structure of the Epstein-Barr virus (EBV) glycoprotein H/glycoprotein L (gH/gL) complex. *Proc Natl Acad Sci*. 2010;107:22641–6.
- McGeoch DJ, Rixon FJ, Davison AJ. Topics in herpesvirus genomics and evolution. *Virus Res*. 2006;117:90–104.
- Mettenleiter TC, Klupp BG, Granzow H. Herpesvirus assembly: a tale of two membranes. *Curr Opin Microbiol*. 2006;9:423–9.
- Molesworth SJ, Lake CM, Borza CM, Turk SM, Hutt-Fletcher LM. Epstein-Barr virus gH is essential for penetration of B cells but also plays a role in attachment of virus to epithelial cells. *J Virol*. 2000;74:6324–32.
- Nair R, Rost B. LOC3D: annotate sub-cellular localization for protein structures. *Nucleic Acids Res*. 2003;31:3337–40.
- Poncelet P, Carayon P. Cytofluorometric quantification of cell-surface antigens by indirect immunofluorescence using monoclonal antibodies. *J Immunol Methods*. 1985;85:65–74.
- Roizman B, Pellett P. The family Herpesviridae: a brief introduction. *Fields virology*. 2001;2:2381–97.
- Roop C, Hutchinson L, Johnson DC. A mutant herpes simplex virus type 1 unable to express glycoprotein L cannot enter cells, and its particles lack glycoprotein H. *J Virol*. 1993;67:2285–97.
- Shawky S, Sandhu T, Shivaprasad H. Pathogenicity of a low-virulence duck virus enteritis isolate with apparent immunosuppressive ability. *Avian Dis*. 2000;590–9.
- Surapureddi S, Svartz J, Magnusson KE, Hammarström S, Söderström M. Colocalization of leukotriene C synthase and microsomal glutathione S-transferase elucidated by indirect immunofluorescence analysis. *FEBS Lett*. 2000;480:239–43.
- Turner A, Bruun B, Minson T, Browne H. Glycoproteins gB, gD, and gH/gL of herpes simplex virus type 1 are necessary and sufficient to mediate membrane fusion in a cos cell transfection system. *J Virol*. 1998;72:873–5.

37. Verhelst J, De VD, Saelens X. Co-immunoprecipitation of the mouse Mx1 protein with the influenza a virus nucleoprotein. *J Vis Exp.* 2015;2015:e52871-e52871
38. Wu Y, Li Q, Chen X-Z. Detecting protein–protein interactions by far western blotting. *Nat Protocol.* 2007;2:3278.
39. Ying W, Anchun C, Mingshu W, Qiao Y, Dekang Z, Renyong J, Shun C, Yi Z, Xiaoyu W, Xiaoyue C. Complete genomic sequence of Chinese virulent duck enteritis virus. *J Virol.* 2012;86:5965.

**Ready to submit your research? Choose BMC and benefit from:**

- fast, convenient online submission
- thorough peer review by experienced researchers in your field
- rapid publication on acceptance
- support for research data, including large and complex data types
- gold Open Access which fosters wider collaboration and increased citations
- maximum visibility for your research: over 100M website views per year

**At BMC, research is always in progress.**

Learn more [biomedcentral.com/submissions](https://biomedcentral.com/submissions)

