




Glioma-derived cancer stem cells are hypersensitive to proteasomal inhibition

Young Dong Yoo, Dae-Hee Lee, Hyunjoo Cha-Molstad, Hyungsin Kim, Su Ran Mun, Changhoon Ji, Seong Hye Park, Ki Sa Sung, Seung A Choi, Joonsung Hwang, Deric M Park, Seung Ki Kim, Kyung-Jae Park, Shin-Hyuk Kang, Sang Cheul Oh, Aaron Ciechanover, Yong J Lee , Bo-Yeon Kim  & Yong Tae Kwon 

Correction to: *EMBO Reports* (2017) 18: 150–168. DOI: 10.15252/embr.201642360 | Published online 19 December 2016

See also: previous corrigendum: *EMBO Reports* (2017) 18: 1671. DOI: 10.15252/embr.201744761 | Published online 1 September 2017

The authors recently noticed a labeling error in Figure 7F, which has been replaced by one with the correct labels. The labeling does not affect the conclusions of the experiment. The authors apologize for any inconvenience caused by this oversight.

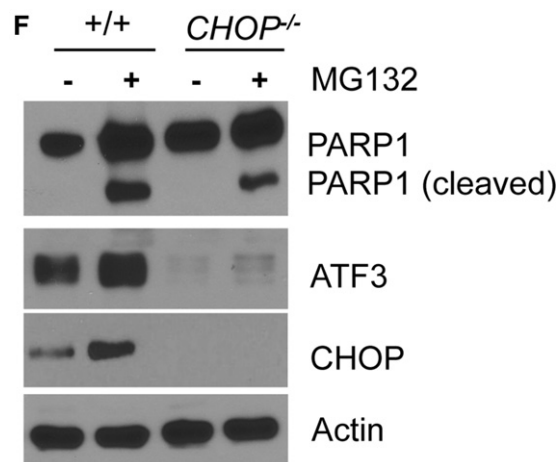


Figure 7F.