

Closed Genome and Comparative Phylogenetic Analysis of the Clinical Multidrug Resistant *Shigella sonnei* Strain 866

Anna Allué-Guardia^{1,2}, Sara S.K. Koenig^{1,2}, Pablo Quirós³, Maite Muniesa³, James L. Bono⁴, and Mark Eppinger^{1,2,*}

¹Department of Biology, University of Texas at San Antonio

²South Texas Center for Emerging Infectious Diseases (STCEID), San Antonio

³Department of Genetics, Microbiology and Statistics, University of Barcelona, Spain

⁴Agricultural Research Service, United States Department of Agriculture, U.S. Meat Animal Research Center, Clay Center, Nebraska

*Corresponding author: E-mail: mark.eppinger@utsa.edu.

Accepted: July 28, 2018

Data deposition: This project has been deposited at Genbank under accession numbers CP022672 and CP022673.

Abstract

Shigella sonnei is responsible for the majority of shigellosis infections in the US with over 500,000 cases reported annually. Here, we present the complete genome of the clinical multidrug resistant (MDR) strain 866, which is highly susceptible to bacteriophage infections. The strain has a circular chromosome of 4.85 Mb and carries a 113 kb MDR plasmid. This IncB/O/K/Z-type plasmid, termed p866, confers resistance to five different classes of antibiotics including β -lactamase, sulfonamide, tetracycline, aminoglycoside, and trimethoprim. Comparative analysis of the plasmid architecture and gene inventory revealed that p866 shares its plasmid backbone with previously described IncB/O/K/Z-type *Shigella* spp. and *Escherichia coli* plasmids, but is differentiated by the insertion of antibiotic resistance cassettes, which we found associated with mobile genetic elements such as Tn3, Tn7, and Tn10. A whole genome-derived phylogenetic reconstruction showed the evolutionary relationships of *S. sonnei* strain 866 and the four established *Shigella* species, highlighting the clonal nature of *S. sonnei*.

Key words: *Shigella sonnei* strain 866, multidrug resistance (MDR), whole genome sequencing, comparative phylogenomics.

Introduction

Shigella sonnei, together with *Shigella flexneri*, is responsible for more than 90% of shigellosis cases in the US (Scallan et al. 2011), causing an estimated 500,000 infections, 6,000 hospitalizations and 70 deaths annually (Mead et al. 1999; Gupta et al. 2004). Historically, *S. sonnei* has been responsible for bacillary dysentery in developed countries but its recent emergence and spread into developing countries over the last decades has raised major public health concerns (Vinh et al. 2009). Unlike other *Shigella* spp., *S. sonnei* is genetically homogenous (Karaolis et al. 1994) and descended from a clonal, rapid-evolving multidrug resistant (MDR) ancestor that diversified into distinct lineages (Holt et al. 2012). MDR strains that confer resistance to different classes of antibiotics have been described (Jain et al. 2005; Kozyreva et al. 2016).

An important virulence factor in *Shigella* spp. is the Shiga toxin, first discovered in the 19th century in a *Shigella dysenteriae* clinical isolate by Kiyoshi Shiga (Trofa et al. 1999), which is also a hallmark of Shiga toxin-producing *Escherichia coli* (STEC) (Eppinger et al. 2011; Sadiq et al. 2014). Although not all *Shigella* spp. or *S. sonnei* isolates are shigatoxigenic, Stx can be laterally acquired through Stx phage infection, either from (STEC) or Stx-producing *Shigella* strains (Strauch et al. 2001; Nyholm et al. 2015). Other key virulence determinants of *Shigella* are long polar fimbriae (*lpfA*), P-related fimbria regulatory gene (*prfB*), *Shigella* IgA-like protease homolog (*sigA*), plasmid-encoded enterotoxin (*senB*), glutamate decarboxylase (*gad*), invasion protein *S. flexneri* (*ipaD*), or VirF transcriptional activator (*virF*), among others as reviewed in Mattock and Blocker (2017).

© The Author(s) 2018. Published by Oxford University Press on behalf of the Society for Molecular Biology and Evolution.

This is an Open Access article distributed under the terms of the Creative Commons Attribution Non-Commercial License (<http://creativecommons.org/licenses/by-nc/4.0/>), which permits non-commercial re-use, distribution, and reproduction in any medium, provided the original work is properly cited. For commercial re-use, please contact journals.permissions@oup.com

Strain 866 has been found to be highly susceptible to infection by a range of phages, including Cytolethal Distending Toxin and Stx-converting prophages found in STEC, as previously demonstrated (Muniesa 2004; Allué-Guardia et al. 2011; Imamovic and Muniesa 2011). This observation highlights the potential epidemiological role of this particular strain in the acquisition and spread of phage-borne pathogenicity factors into larger host-pathogen populations by means of bacteriophage transduction. The availability of the closed high-quality 866 genome presented in this study is foundational to further elucidate genome characteristics correlated with its virulence, resistance, and bacteriophage susceptibility.

Materials and Methods

Shigella sonnei 866

The clinical *S. sonnei* strain 866 was isolated from human feces in September of 2000 in Hospital de la Santa Creu i Sant Pau in Barcelona, Spain. Species identification was confirmed by an array of biochemical tests (API 20E, BioMérieux, Marcy-l'Étoile, France) (supplementary table 1), following the manufacturer's instructions. As demonstrated previously, strain 866 is highly susceptible to lyso-genic phage infection and prophage genome incorporation (Muniesa 2004; Allué-Guardia et al. 2011; Imamovic and Muniesa 2011).

Genome Sequencing, Assembly, and Annotation

The strain was cultured in Luria-Bertani broth (Fisher Scientific, Thermo Fisher Scientific, Asheville, NC, USA) overnight at 37 °C in a shaker (180 rpm). Total genomic DNA was extracted from the overnight culture using the QIAamp DNA Mini Kit (Qiagen, Inc., Valencia, CA, USA) according to the manufacturer's protocol. To close the genome, we pursued a hybrid approach using long-read PacBio RS II and short-read Illumina MiSeq sequencing. Briefly, for PacBio sequencing, genomic DNA was sheared into 20-kb fragments using g-TUBE (Covaris, Inc., Woburn, MA, USA). The library was prepared based on the 20-kb PacBio sample preparation protocol and sequenced using P6/C4 chemistry on four single-molecule real-time (SMRT) cells with a 240-min collection time. The continuous long-read data were de novo assembled using the PacBio hierarchical genome assembly process (HGAP version 3.0) (Chin et al. 2013) with default parameters in SMRT Analysis v2.3.0, including consensus polishing with Quiver (Chin et al. 2013). For Illumina sequencing, a paired-end library was prepared using the NxSeq AmpFREE Low DNA Library Kit (Lucigen) and sequenced with 250-bp read length using the MiSeq Reagent kit v2 500-cycle (Illumina) following the manufacturer's guidelines. Illumina reads were utilized for PacBio sequence error correction using Pilon

(Walker et al. 2014). The chromosomal and plasmid origin of replication, *oriC* (<http://tubic.tju.edu.cn/Ori-Finder/>; last accessed August 06, 2018) (Gao and Zhang 2008) and *repA*, respectively, were determined and designated as the zero point of the closed molecules prior to annotation using the NCBI Prokaryotic Genome Annotation Pipeline (PGAP) (Tatusova et al. 2016).

Comparative Phylogenomics

After assembly and annotation, virulence and antibiotic resistance (AR) genes in the 866 chromosome and plasmid were detected *in silico* by VirulenceFinder (<https://cge.cbs.dtu.dk/services/VirulenceFinder/>; last accessed August 06, 2018) (Joensen et al. 2014) and ResFinder (<https://cge.cbs.dtu.dk/services/ResFinder/>; last accessed August 06, 2018) (Zankari et al. 2012), respectively. Prophages and plasmid incompatibility groups were identified using PHASTER (Zhou et al. 2011; Arndt 2016) and PlasmidFinder (<https://cge.cbs.dtu.dk/services/PlasmidFinder/>; last accessed August 06, 2018) (Carattoli et al. 2014), respectively. BLASTn (Altschul et al. 1990) of the complete p866 sequence against the NCBI non-redundant database identified a number of *Shigella* and *E. coli* IncB/O/K/Z-type plasmids as closest phylogenetic relatives. Respective plasmid gene inventories were compared with BLAST atlas in the GView server (<https://server.gview.ca/>; last accessed August 06, 2018) (Petkau et al. 2010). To further establish the phylogenetic relatedness of strain 866 within *Shigella*, we selected a total of 26 representative *S. sonnei*, *S. flexneri*, *S. dysenteriae*, and *S. boydii* genomes from NCBI (supplementary table 2) to capture the plasticity within the four established *Shigella* species (Sahl et al. 2015). The phylogeny was inferred from the whole genome alignment using Mugsy (Anjuoli and Salzberg 2011) and RAxML (Stamatakis 2014) with 100 bootstrap replicates. The tree was visualized in Geneious (Kearse et al. 2012) and decorated with strain-associated metadata in Evolview (Zhang et al. 2012; He et al. 2016).

Results and Discussion

Pathogenome Architecture and Inventory

A hybrid strategy using long-read PacBio and short-read Illumina technologies allowed us to sequence the *S. sonnei* strain 866 genome to closure with high chromosomal and plasmid coverage of 107x and 134x. The genome is comprised of a 4,849,628 bp chromosome and a 113,079 bp MDR plasmid, termed p866, with an average GC content of 51% for both molecules. Strain 866 lacks the large virulence plasmid pSS, which encodes the *wbg* Phase I O antigen cluster, and thus features a rough colony morphology (Kopecko et al. 1980; Caboni et al. 2015).

Annotation with PGAP (Tatusova et al. 2016) predicted a total of 4,482 coding sequences (CDS), 96 tRNAs, and 22 rRNAs. The annotated chromosome and plasmid p866 have

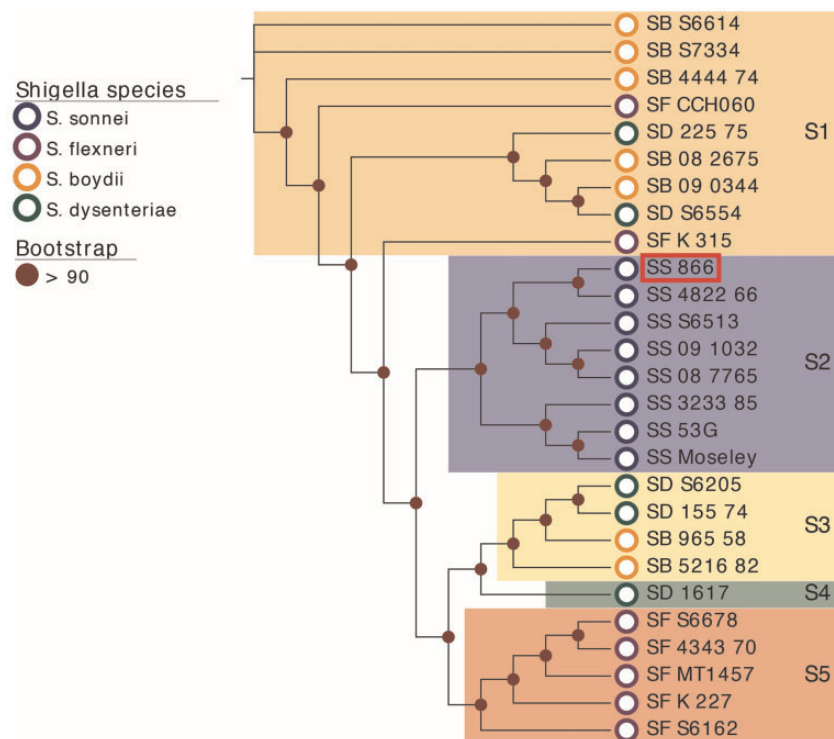


Fig. 1.—Whole genome phylogeny of representative *Shigella* spp. strains. Genomes of a total of 27 *Shigella* strains (*S. sonnei* SS, blue; *S. boydii* SB, orange; *S. flexneri* SF, purple; and *S. dysenteriae* SD, green) including *S. sonnei* 866, highlighted by a red box, were aligned with Mugsy (Angiuoli and Salzberg 2011). The phylogenetic tree was inferred using RAxML (Stamatakis 2014) with a 100 bootstrap replicates and decorated with the corresponding metadata in Evolview (He et al. 2016). Only bootstrap values above 90 are shown in the tree. The tree topology partitions the isolates into five distinct clusters (S1–S5). Unlike the monophyletic *S. sonnei* clade S2, the phylogenetic clustering does not corroborate with the *Shigella* species designation.

been deposited in GenBank under accession numbers CP022672 and CP022673, respectively.

Whole Genome Phylogenetic Analysis

To determine the evolutionary relationship of *S. sonnei* strain 866 within *Shigella*, we established a phylogenetic framework by including representative *S. sonnei*, *S. flexneri*, *S. boydii*, and *S. dysenteriae* genomes (supplementary table 2) to capture diversity among the four species (fig. 1). The resulting whole genome-based phylogeny positions strain 866 into clade S2, a group exclusively comprised of *S. sonnei* isolates, indicative of the clonal nature of *S. sonnei* (Karaolis et al. 1994). The genetic homogeneity of this cluster was further confirmed by whole genome comparison, as evidenced by the high degree of the overall nucleotide sequence similarity in the genomes (supplementary fig. 1). The tree topology partitions the isolates into five distinct phylogenetic clusters (S1–S5), as previously established (Sahl et al. 2015). With the exception of the monophyletic *S. sonnei* clade S2 (fig. 1), we note here that the *Shigella* species designation, historically based on clinical outcome, often does not corroborate with the phylogenetic clustering, as different species make-up clades S1 and S3–S5. Further, pathovar boundaries in *Shigella* and

E. coli are clearly obstructed by mobile virulence and resistance factors that can be acquired or lost through independent evolutionary events (Ke et al. 2011; Holt et al. 2012; Sadiq et al. 2014; Parajuli et al. 2017).

Virulence and Resistance Profile of *S. sonnei* 866

The *Shigella* genome is highly dynamic, and mobile elements are major drivers of the *S. sonnei* pathogenome evolution (Jiang et al. 2005; Chang et al. 2011; Juhas 2015). Phage profiling by PHASTER (Arndt 2016) showed that strain 866 carries a highly diverse inventory of 17 prophages, including seven complete and several predicted prophage remnants. Details of respective prophage chromosomal position, length, GC content, and number of predicted CDS are provided in supplementary table 3. Identified prophage regions show partial homologies to several enterobacteria phages, such as, for example, phiP27, P1, Gifsy-2, lambda, or SEN34 (Parajuli et al. 2017). These phage-borne loci encode important virulence determinants, such as the invasion plasmid antigen IpaH9.8, an E3 ubiquitin ligase that interferes with the host's ubiquitination pathways and facilitates colonization (Okuda et al. 2005). We also noted that the majority of the 866 prophages carry transposons and IS elements that are known drivers of

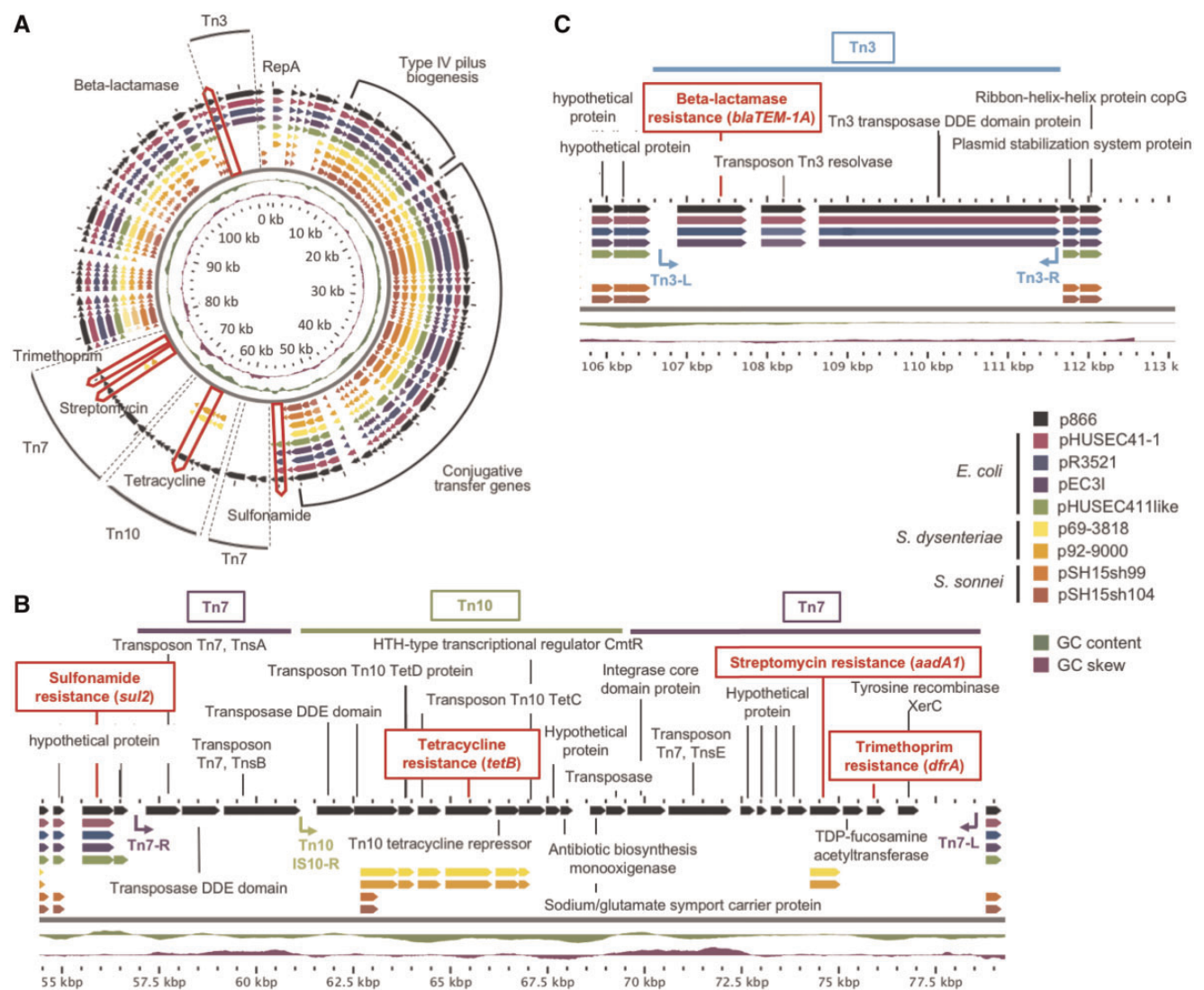


FIG. 2.—Comparison of *Shigella sonnei* p866 plasmid architecture and inventory with phylogenetically related *Escherichia coli* and *Shigella* plasmids. BLAST atlas (Petkau et al. 2010) comparison of related *E. coli* and *Shigella* plasmids, as determined by BLASTn inferred nucleotide sequence similarities (Altschul et al. 1990). (A) Respective gene inventories are referenced to the 113 kb MDR-plasmid p866 (black, outer circle). CDS are presented as arrows and color-coded according to plasmid origin as depicted in the legend. GC-content and -skew of p866 are depicted in the two innermost circles, in green and purple, respectively. Plasmid locations of the type IV pilus biogenesis, conjugal transfer, and five antimicrobial resistance loci, which are part of transposable elements Tn3, Tn7, and Tn10 are highlighted. The other two figures correspond to a linear representation of the five coded antimicrobial resistance loci in p866. Four of the five resistances were introduced by insertion of three transposable elements, with the notable exception of sulfonamide locus, which is an integral part of the plasmid backbone. Tn3-, Tn7-, and Tn10-associated resistance cassettes are inserted at two different locations. (B) Tn7 and Tn10 elements form a composite transposon, in which Tn10 disrupts Tn7, and confers tetracycline, streptomycin, and trimethoprim resistance. (C) Transposon Tn3 confers β -lactamase resistance. Transposon boundaries and inverted repeats, if detected, are shown as arrows. CDS are presented as arrows and color-coded according to plasmid origin as depicted in the legend. GC-content and -skew of p866 are depicted, in green and purple, respectively.

bacteriophage diversification (Eppinger et al. 2011; Yin et al. 2015). Bacteria often carry an array of prophages in their genomes. The benefits conferred by polylysogeny are poorly understood, but previous reports show that in mixed infections with phage-free bacteria, phage carriage, and especially multiple phage carriage, is highly beneficial and provides a fitness advantage during mixed infections by mediating bacteria–bacteria competition (Burns et al. 2015). Moreover,

many bacteria use their prophages as weapons against competitors. Because the different temperate phages are likely to have different host ranges, this expands the range of bacterial competitors that the polylysogen can kill (James et al. 2012).

This strain features virulence hallmarks of *S. sonnei* such as *lpfA*, *ipaH9.8*, *gad*, *senB*, and *sigA* (Okuda et al. 2005; Al-Hasani et al. 2009; Torres et al. 2009; Joensen et al. 2014; Mattock and Blocker 2017). We further identified an arsenal

of five AR loci on the MDR-plasmid p866 (fig. 2A), which renders this strain β -lactamase (*bla*_{TEM-1A}), sulfonamide (*sul2*), tetracycline (*tetB*), aminoglycoside (*aadA1*), and trimethoprim (*dfra*) resistant (Zankari et al. 2012; Miranda et al. 2016).

Phylogenetic Relatedness and Gene Inventory of MDR-Plasmid p866

To elucidate phylogenetic relatedness of the MDR plasmid, we performed a nucleotide BLASTn (Altschul et al. 1990) search of the complete p866 plasmid sequence against the non-redundant database at NCBI. We, hereby, identified several plasmids of diverse *E. coli* and *Shigella* pathovars that share high similarity at the nucleotide level (>99%) with a coverage of the plasmid backbones ranging from 72% to 79%. Namely, *E. coli* plasmids pHUSEC41-1, from an EAEC O104: H4 hybrid strain from the 2011 outbreak in Germany (Kunne et al. 2012), pEC3I (KU932021.1), pR3521 (Papagiannitsis et al. 2011), and pHUSEC411, from ExPEC O18: K1 strain PMV-1 (Peris-Bondia et al. 2013). Further, *S. dysenteriae* 1 plasmids p69-3818 (strain 69-3818, Guatemala 1969) and p92-9000 (strain 92-9000, Panama 1991) (Njamkepo et al. 2016). Here, we note that the phylogenetic closest *S. sonnei* plasmids in the NCBI repository show only ~68% sequence coverage, as seen for plasmids pSH15sh99 (KY471628.1) or pSH15sh104 (KY471629.1).

We compared both the p866 coding capacity and plasmid architecture among these phylogenetically related plasmids, which are all of the IncB/O/K/Z incompatibility group (Kozyreva et al. 2016). Nucleotide-level analysis using BLAST atlas (Petkau et al. 2010) shows a largely syntenic shared plasmid backbone of ~86 kb that is highly conserved (fig. 2A). It encodes operons for type IV pilus biogenesis, conjugal transfer, and plasmid maintenance, which altogether account for more than 50% of the shared plasmid backbone. Our analysis clearly shows that microevolution in this MDR plasmid is driven by transposon (Tn) insertions into the plasmid backbone. As shown in figure 2A, four of the five AR loci were introduced by insertion of three transposable elements that disrupt plasmid synteny: Tn3 (*bla*_{TEM-1A}), Tn7 (*aadA1* and *dfra*), and Tn10 (*tetB*) (Bailey et al. 2011; Nogrady et al. 2013; Kozyreva et al. 2016), although the *sul2* gene is part of the *E. coli* and *S. sonnei* p866 plasmid backbones. The prototypical Tn7 is plastic in its carried resistance gene cassettes and encodes seven genes (*tnsABCDE*) required for transposition (Peters and Craig 2001). In case of p866 Tn7, we found that Tn7_{tnsCD} loci are missing, likely due to a secondary insertion of Tn10 in-between the Tn7_{tnsBE} (fig. 2B). Transposon Tn3 appears intact while Tn10 lacks the left IS10 repeat, which might impair its mobility (Chalmers et al. 2000; Lawley et al. 2000; Haniford and Ellis 2015). Details of the respective Tn sequence compositions including inverted repeats can be found in figure 2B and C.

Comparison of AR profiles among these plasmids shows that trimethoprim (*dfra*) resistance is uniquely found in p866

as an integral component of Tn7 (fig. 2A). Both p866 and the two *S. dysenteriae* plasmids confer *aadA1* and *tetB* resistance, though the respective streptomycin loci are found in different transposon contexts; Tn7_{aadA1} in p866 and Tn21_{aadA1} (Liebert et al. 1999), in case of *S. dysenteriae* (fig. 2B). Strain 866 carries another transposon-encoded resistance on Tn3_{blaTEM-1A} (fig. 2C), a feature shared by all compared *E. coli* plasmids with the exception of pHUSEC411. In contrast, sulfonamide^R (fig. 2B) was identified as an integral part of the *E. coli* plasmid backbone. The observed prevalence and mosaic structure of the transposon resistance cassettes stresses their role as major drivers of IncB/O/K/Z-type plasmid evolution. Plasmid spread into broader host populations crossing *E. coli* and *Shigella* pathovar boundaries is likely facilitated by the conjugal transfer system found on its backbone (fig. 2A).

The emergence of MDR bacteria has been identified by the World Health Organization as a pressing global public health problem. An emerging threat is posed by the spread of antibiotic resistant *S. sonnei* isolates (Puzari et al. 2017), the major culprit of human shigellosis within last decades (Sivapalasingam et al. 2006; Kahsay and Muthupandian 2016; Taneja and Mewara 2016), which has an exceptional ability to laterally acquire and transfer resistance genes (Ke et al. 2011; Holt et al. 2012; Thompson et al. 2015; Sváb et al. 2017; Rajpara et al. 2018). Using whole genome sequencing and typing strategies, we have elucidated the genomic make-up and phylogenetic relationship of the clinical *S. sonnei* strain 866 and identified the genomic basis of AR against five classes of antibiotics on the carried MDR-plasmid p866. The microevolution of this IncB/O/K/Z-type plasmid is driven by different Tn insertions that render strain 866 MDR. The carried conjugal transfer backbone of p866 makes it an ideal vehicle for the lateral spread of resistance loci into diverse *E. coli* and *Shigella* pathovars (fig. 2A) and potentially other enterics of clinical importance. Monitoring emerging trends in the *S. sonnei* pathogenome evolution is thus critical to translate sequence-based information into actionable countermeasures to detect and prevent the spread of MDR resistant *Shigella* clones. Identified genome signatures of such emerging highly virulent and AR resistant clones are readily applicable for improved biosurveillance, risk assessment, and informed and improved therapeutic strategies (Oany et al. 2017; Pinaud et al. 2017).

Supplementary Material

Supplementary data are available at *Genome Biology and Evolution* online.

Acknowledgments

This work was supported by the South Texas Center of Emerging Infectious Diseases (STCEID) and the Department of Biology at the University of Texas at San Antonio; the

National Institute of Allergy and Infectious Diseases of the National Institutes of Health [SC2AI120941]; and the US Department of Homeland Security [2014-ST-062-000058] to M.E. The contributions of J.L.B. were funded by the Agricultural Research Service of the U.S. Department of Agriculture (ARS-USDA). We would like to acknowledge Ferran Navarro (Hospital de la Santa Creu i Sant Pau, Microbiology service, Barcelona, Spain) for providing strain 866. We would like to thank Heidi Gildersleeve (UTSA), Sandy Fryda-Bradley (USDA), and Kristin Kuhn (USDA) for providing technical assistance. The mention of a trade name, proprietary product, or specific equipment does not constitute a guarantee or warranty by the USDA and does not imply approval to the exclusion of other products that might be suitable. The United States Meat Animal Research Center is an equal opportunity employer and provider.

Author Contributions

A.A.G., S.K.K., and M.E. performed comparative phylogenomics analyses. J.L.B. provided PacBio sequences and assembly. M.M. and P.Q. provided *S. sonnei* strain 866 and biochemical characterizations. A.A.G. and M.E. drafted the manuscript. All authors read and approved the final manuscript.

Literature Cited

- Al-Hasani K, Navarro-Garcia F, Huerta J, Sakellaris H, Adler B. 2009. The immunogenic SigA enterotoxin of *Shigella flexneri* 2a binds to HEP-2 cells and induces fodrin redistribution in intoxicated epithelial cells. *PLoS One* 4(12):e8223.
- Allue-Guardia A, Garcia-Aljaro C, Muniesa M. 2011. Bacteriophage-encoding cytolethal distending toxin type V gene induced from non-clinical *Escherichia coli* isolates. *Infect Immun*. 79(8):3262–3272.
- Altschul SF, Gish W, Miller W, Myers EW, Lipman DJ. 1990. Basic local alignment search tool. *J Mol Biol*. 215(3):403–410.
- Angiuoli SV, Salzberg SL. 2011. Mugsy: fast multiple alignment of closely related whole genomes. *Bioinformatics* 27(3):334–342.
- Arndt D. 2016. PHASTER: a better, faster version of the PHAST phage search tool. *Nucleic Acids Res*. 44(W1):W16–W21.
- Bailey JK, Pinyon JL, Anantham S, Hall RM. 2011. Distribution of the *bla*TEM gene and *bla*TEM-containing transposons in commensal *Escherichia coli*. *J Antimicrob Chemother*. 66(4):745–751.
- Burns N, James CE, Harrison E. 2015. Polylysogeny magnifies competitiveness of a bacterial pathogen *in vivo*. *Evol Appl*. 8(4):346–351.
- Caboni M, et al. 2015. An O antigen capsule modulates bacterial pathogenesis in *Shigella sonnei*. *PLoS Pathog*. 11(3):e1004749.
- Carattoli A, et al. 2014. In silico detection and typing of plasmids using PlasmidFinder and plasmid multilocus sequence typing. *Antimicrob Agents Chemother*. 58(7):3895–3903.
- Chalmers R, Sewitz S, Lipkow K, Crellin P. 2000. Complete nucleotide sequence of Tn10. *J Bacteriol*. 182(10):2970–2972.
- Chang CY, et al. 2011. Integron types, gene cassettes, antimicrobial resistance genes and plasmids of *Shigella sonnei* isolates from outbreaks and sporadic cases in Taiwan. *J Med Microbiol*. 60(2):197–204.
- Chin CS, et al. 2013. Nonhybrid, finished microbial genome assemblies from long-read SMRT sequencing data. *Nat Methods* 10(6):563–569.
- Eppinger M, Mammel MK, Leclerc JE, Ravel J, Cebula TA. 2011. Genomic anatomy of *Escherichia coli* O157:H7 outbreaks. *Proc Natl Acad Sci U S A*. 108(50):20142–20147.
- Gao F, Zhang CT. 2008. Ori-Finder: a web-based system for finding *oriC*s in unannotated bacterial genomes. *BMC Bioinformatics* 9(1):79.
- Gupta A, Polyak CS, Bishop RD, Sobel J, Mintz ED. 2004. Laboratory-confirmed shigellosis in the United States, 1989–2002: epidemiologic trends and patterns. *Clin Infect Dis*. 38(10):1372–1377.
- Haniford DB, Ellis MJ. 2015. Transposons Tn10 and Tn5. *Microbiol Spectr*. 3(1):MDNA3-0002-2014.
- He Z, et al. 2016. Evolvview v2: an online visualization and management tool for customized and annotated phylogenetic trees. *Nucleic Acids Res*. 44(W1):W236–W241.
- Holt KE, et al. 2012. *Shigella sonnei* genome sequencing and phylogenetic analysis indicate recent global dissemination from Europe. *Nat Genet*. 44(9):1056–1059.
- Imamovic L, Muniesa M. 2011. Quantification and evaluation of infectivity of shiga toxin-encoding bacteriophages in beef and salad. *Appl Environ Microbiol*. 77(10):3536–3540.
- Jain SK, Gupta A, Glanz B, Dick J, Siberry GK. 2005. Antimicrobial-resistant *Shigella sonnei*: limited antimicrobial treatment options for children and challenges of interpreting *in vitro* azithromycin susceptibility. *Pediatr Infect Dis J*. 24(6):494–497.
- James CE, et al. 2012. Differential infection properties of three inducible prophages from an epidemic strain of *Pseudomonas aeruginosa*. *BMC Microbiol*. 12(1):216.
- Jiang Y, et al. 2005. The complete sequence and analysis of the large virulence plasmid pSS of *Shigella sonnei*. *Plasmid* 54(2):149–159.
- Joensen KG, et al. 2014. Real-time whole-genome sequencing for routine typing, surveillance, and outbreak detection of verotoxigenic *Escherichia coli*. *J Clin Microbiol*. 52(5):1501–1510.
- Juhas M. 2015. Horizontal gene transfer in human pathogens. *Crit Rev Microbiol*. 41(1):101–108.
- Kahsay AG, Muthupandian S. 2016. A review on Sero diversity and antimicrobial resistance patterns of *Shigella* species in Africa, Asia and South America, 2001–2014. *BMC Res Notes* 9(1):422.
- Karaolis DK, Lan R, Reeves PR. 1994. Sequence variation in *Shigella sonnei* (Sonnei), a pathogenic clone of *Escherichia coli*, over four continents and 41 years. *J Clin Microbiol*. 32(3):796–802.
- Ke X, Gu B, Pan S, Tong M. 2011. Epidemiology and molecular mechanism of integron-mediated antibiotic resistance in *Shigella*. *Arch Microbiol*. 193(11):767–774.
- Kearse M, et al. 2012. Geneious Basic: an integrated and extendable desktop software platform for the organization and analysis of sequence data. *Bioinformatics* 28(12):1647–1649.
- Kopecko DJ, Washington O, Formal SB. 1980. Genetic and physical evidence for plasmid control of *Shigella sonnei* form I cell surface antigen. *Infect Immun*. 29:207–214.
- Kozyreva VK, et al. 2016. Recent outbreaks of Shigellosis in California caused by two distinct populations of *Shigella sonnei* with either increased virulence or fluoroquinolone resistance. *mSphere* 1(6):doi:10.1128/mSphere.00344-16.
- Kunne C, et al. 2012. Complete sequences of plasmids from the hemolytic-uremic syndrome-associated *Escherichia coli* strain HUSEC41. *J Bacteriol*. 194(2):532–533.
- Lawley TD, Burland V, Taylor DE. 2000. Analysis of the complete nucleotide sequence of the tetracycline-resistance transposon Tn10. *Plasmid* 43(3):235–239.
- Liebert CA, Hall RM, Summers AO. 1999. Transposon Tn21, flagship of the floating genome. *Microbiol Mol Biol Rev*. 63(3):507–522.
- Mattock E, Blocker AJ. 2017. How do the virulence factors of *Shigella* work together to cause disease? *Front Cell Infect Microbiol*. 7:64.
- Mead PS, et al. 1999. Food-related illness and death in the United States. *Emerg Infect Dis*. 5(5):607–625.

- Miranda A, et al. 2016. Emergence of plasmid-borne *dfrA14* trimethoprim resistance gene in *Shigella sonnei*. *Front Cell Infect Microbiol.* 6:77.
- Muniesa M. 2004. Diversity of *stx2* converting bacteriophages induced from Shiga-toxin-producing *Escherichia coli* strains isolated from cattle. *Microbiology* 150(9):2959–2971.
- Njamkepo E, et al. 2016. Global phylogeography and evolutionary history of *Shigella dysenteriae* type 1. *Nat Microbiol.* 1(4):16027.
- Nogrady N, et al. 2013. Antimicrobial resistance and genetic characteristics of integron-carrier shigellae isolated in Hungary (1998-2008). *J Med Microbiol.* 62(10):1545–1551.
- Nyholm O, et al. 2015. Characterization of *Shigella sonnei* isolate carrying Shiga Toxin 2-producing gene. *Emerg Infect Dis.* 21(5):891–892.
- Oany AR, et al. 2017. Vaccinomics approach for designing potential peptide vaccine by targeting *Shigella spp.* serine protease autotransporter subfamily protein SigA. *J Immunol Res.* 2017:1.
- Okuda J, et al. 2005. Shigella effector IpaH9.8 binds to a splicing factor U2AF(35) to modulate host immune responses. *Biochem Biophys Res Commun.* 333(2):531–539.
- Papagiannitsis CC, Tzouveleki LS, Kotsakis SD, Tzelepi E, Miriagou V. 2011. Sequence of pR3521, an IncB plasmid from *Escherichia coli* encoding ACC-4, SCO-1, and TEM-1 beta-lactamases. *Antimicrob Agents Chemother.* 55(1):376–381.
- Parajuli P, Adamski M, Verma NK. 2017. Bacteriophages are the major drivers of *Shigella flexneri* serotype 1c genome plasticity: a complete genome analysis. *BMC Genomics* 18(1):722.
- Peris-Bondia F, Muraille E, Van Melderen L. 2013. Complete genome sequence of the *Escherichia coli* PMV-1 strain, a model extraintestinal pathogenic *E. coli* strain used for Host-Pathogen Interaction Studies. *Genome Announc.* 1(5): doi: 10.1128/genomeA.00913-13.
- Peters JE, Craig NL. 2001. Tn7: smarter than we thought. *Nat Rev Mol Cell Biol.* 2(11):806–814.
- Petkau A, Stuart-Edwards M, Stothard P, Van Domselaar G. 2010. Interactive microbial genome visualization with GView. *Bioinformatics* 26(24):3125–3126.
- Pinaud L, et al. 2017. Identification of novel substrates of *Shigella* T3SA through analysis of its virulence plasmid-encoded secretome. *PLoS One* 12(10):e0186920.
- Puzari M, Sharma M, Chetia P. 2017. Emergence of antibiotic resistant *Shigella* species: a matter of concern. *J Infect Public Health* doi: 10.1016/j.jiph.2017.09.025.
- Rajpara N, et al. 2018. Molecular analysis of multidrug resistance in clinical isolates of *Shigella spp.* from 2001-2010 in Kolkata, India: role of integrons, plasmids, and topoisomerase mutations. *Infect Drug Resist.* 11:87–102.
- Sadiq SM, Hazen TH, Rasko DA, Eppinger M. 2014. EHEC genomics: past, present, and future. *Microbiol Spectr.* 2(4):EHEC-0020-2013.
- Sahl JW, et al. 2015. Defining the phylogenomics of *Shigella* species: a pathway to diagnostics. *J Clin Microbiol.* 53(3):951–960.
- Scallan E, et al. 2011. Foodborne illness acquired in the United States—major pathogens. *Emerg Infect Dis.* 17(1):7–15.
- Sivapalasingam S, et al. 2006. High prevalence of antimicrobial resistance among *Shigella* isolates in the United States tested by the National Antimicrobial Resistance Monitoring System from 1999 to 2002. *Antimicrob Agents Chemother.* 50(1):49–54.
- Stamatakis A. 2014. RAxML version 8: a tool for phylogenetic analysis and post-analysis of large phylogenies. *Bioinformatics* 30(9):1312–1313.
- Strauch E, Lurz R, Beutin L. 2001. Characterization of a Shiga toxin-encoding temperate bacteriophage of *Shigella sonnei*. *Infect Immun.* 69(12):7588–7595.
- Sváb D, Bálint B, Vársárhelyi B, Maróti G, Tóth I. 2017. Comparative genomic and phylogenetic analysis of a Shiga Toxin Producing *Shigella sonnei* (STSS) strain. *Front Cell Infect Microbiol.* 7:229.
- Taneja N, Mewara A. 2016. Shigellosis: epidemiology in India. *Indian J Med Res.* 143(5):565–576.
- Tatusova T, et al. 2016. NCBI prokaryotic genome annotation pipeline. *Nucleic Acids Res.* 44(14):6614–6624.
- Thompson CN, Duy PT, Baker S. 2015. The rising dominance of *Shigella sonnei*: an Intercontinental Shift in the Etiology of Bacillary Dysentery. *PLoS Negl Trop Dis.* 9(6):e0003708.
- Torres AG, et al. 2009. Genes related to long polar fimbriae of pathogenic *Escherichia coli* strains as reliable markers to identify virulent isolates. *J Clin Microbiol.* 47(8):2442–2451.
- Trofa AF, Ueno-Olsen H, Oiwa R, Yoshikawa M. 1999. Dr. Kiyoshi Shiga: discoverer of the dysentery bacillus. *Clin Infect Dis.* 29(5):1303–1306.
- Vinh H, et al. 2009. A changing picture of shigellosis in southern Vietnam: shifting species dominance, antimicrobial susceptibility and clinical presentation. *BMC Infect Dis.* 9(1):204.
- Walker BJ, et al. 2014. Pilon: an integrated tool for comprehensive microbial variant detection and genome assembly improvement. *PLoS One* 9(11):e112963.
- Yin S, et al. 2015. *Escherichia coli* O157:H7 strains harbor at least three distinct sequence types of Shiga toxin 2a-converting phages. *BMC Genomics* 16(1):733.
- Zankari E, et al. 2012. Identification of acquired antimicrobial resistance genes. *J Antimicrob Chemother.* 67(11):2640–2644.
- Zhang H, Gao S, Lercher MJ, Hu S, Chen WH. 2012. EvolView, an online tool for visualizing, annotating and managing phylogenetic trees. *Nucleic Acids Res.* 40(W1):W569–W572.
- Zhou Y, Liang Y, Lynch KH, Dennis JJ, Wishart DS. 2011. PHAST: a fast phage search tool. *Nucleic Acids Res.* 39(Suppl):W347–W352.

Associate editor: Howard Ochman