



Published in final edited form as:

*Am J Surg Pathol.* 2018 October ; 42(10): 1297–1305. doi:10.1097/PAS.0000000000001096.

## Ectomesenchymal chondromyxoid tumor: A Neoplasm characterized by RECURRENT *RREB1-MKL2* FUSIONS

Brendan C. Dickson, MD, MSc<sup>1,\*</sup>, Cristina R. Antonescu, MD<sup>2</sup>, Prokopios P. Argyris, DDS, MSc, PhD<sup>3</sup>, Elizabeth Bilodeau, DMD, MD<sup>4</sup>, Martin J. Bullock, MD<sup>5</sup>, Paul D Freedman, DDS<sup>6</sup>, Cheng-Han Lee, MD, PhD<sup>7</sup>, Richard C. Jordan, DDS, PhD<sup>8</sup>, Iona Leong, BDS, MSc<sup>1,9</sup>, Douglas R. Gnepp, MD<sup>10</sup>, Ioannis G. Koutlas, DDS<sup>11</sup>, Mihai Merzianu, MD<sup>12</sup>, Bibianna M. Purgina, MD<sup>13</sup>, Lester D. R. Thompson, MD<sup>14</sup>, Bret Wehrli, MD<sup>15</sup>, John M. Wright, DDS<sup>16</sup>, David Swanson, BSc<sup>1</sup>, Lei Zhang, MD<sup>2</sup>, and Justin A. Bishop, MD<sup>17</sup>

<sup>1</sup>Department of Pathology & Laboratory Medicine, Mount Sinai Hospital; Department of Laboratory Medicine and Pathobiology, University of Toronto; Toronto, ON, Canada

<sup>2</sup>Department of Pathology, Memorial Sloan Kettering Cancer Center, New York, NY, USA

<sup>3</sup>Division of Oral and Maxillofacial Pathology, School of Dentistry and Department of Biochemistry, Molecular Biology and Biophysics, College of Biological Sciences, University of Minnesota, Minneapolis, MN, USA

<sup>4</sup>Department of Diagnostic Sciences, University of Pittsburgh School of Dental Medicine, Pittsburgh, PA

<sup>5</sup>Department of Pathology, Dalhousie University, Halifax, NS, Canada

<sup>6</sup>Section of Oral Pathology, New York Presbyterian/Queens, Flushing, NY, USA

<sup>7</sup>BC Cancer Agency, Vancouver, British Columbia, Canada

<sup>8</sup>Departments of Orofacial Sciences, Pathology and Radiation Oncology, University of California San Francisco, CA, USA

<sup>9</sup>Department of Oral Pathology & Oral Medicine, Faculty of Dentistry, University of Toronto. Toronto, ON, Canada

<sup>10</sup>Department of Pathology, Warren Alpert School of Medicine at Brown University (retired), Providence, RI, USA

<sup>11</sup>Division of Oral and Maxillofacial Pathology, School of Dentistry, University of Minnesota, Minneapolis, MN, USA

<sup>12</sup>Roswell Park Cancer Institute, Buffalo, NY, USA

<sup>13</sup>Department of Pathology and Laboratory Medicine, Ottawa Hospital and University of Ottawa, Ottawa, ON, Canada

\*Corresponding Author: Brendan C. Dickson, MD, MSc, FCAP, FRCPC, Department of Pathology & Laboratory Medicine, Mount Sinai Hospital, 600 University Ave, Suite 6.500.12.5, Toronto, Ontario, Canada M5G 1X5, P: 416.586.4800 (x7405), F: 416.586.8628, Brendan.Dickson@sinaihealthsystem.ca.

Conflicts of Interest: None

<sup>14</sup>Southern California Permanente Medical Group, Woodland Hills, CA, USA

<sup>15</sup>Department of Pathology and Laboratory Medicine, London Health Sciences Centre and Western University, London, ON, Canada

<sup>16</sup>Texas A&M College of Dentistry, Dallas, TX, USA

<sup>17</sup>Department of Pathology, UT Southwestern Medical Center, Dallas, TX, USA

## Abstract

Ectomesenchymal chondromyxoid tumor is a rare and benign neoplasm with a predilection for the anterior dorsal tongue. Despite morphologic heterogeneity, most cases are characterized by a proliferation of bland spindle cells with a distinctive reticular growth pattern and myxoid stroma. The immunophenotype of these neoplasms is likewise variable; most cases express glial fibrillary acid protein and S100 protein, with inconsistent reports of keratin and myoid marker expression. The molecular pathogenesis is poorly understood; however, a subset of cases has been reported to harbor *EWSR1* gene rearrangement. Following identification of an *RREB1-MKL2* fusion gene by RNA-Seq in an index patient, a retrospective review of additional cases of ectomesenchymal chondromyxoid tumors was performed to better characterize the clinical, immunohistochemical and molecular attributes of this neoplasm. A total of 21 cases were included in this series. A marked predisposition for the dorsal tongue was confirmed. Most cases conformed to prior morphologic descriptions; however, hypercellularity, hyalinized stroma and necrosis were rare attributes not previously emphasized. The neoplastic cells frequently co-expressed glial fibrillary acid protein, S100 protein, keratin, smooth muscle actin and/or desmin; a single case was found to contain significant myogenin expression. An *RREB1-MKL2* fusion product was identified in 19 tumors (90%), a single tumor (5%) had an *EWSR1-CREM* fusion product, and the remaining case lacked any known fusion gene by RNA-Seq. The latter two cases subtly differed morphologically from many in the cohort. This series illustrates that recurrent *RREB1-MKL2* fusions occur in most, perhaps all, cases of ectomesenchymal chondromyxoid tumor.

## Keywords

Ectomesenchymal chondromyxoid tumor; tongue; gene rearrangement; RREB1; MKL2; EWSR1; CREM

## INTRODUCTION

Ectomesenchymal chondromyxoid tumor is a rare mesenchymal neoplasm – with fewer than 100 reported cases in the English literature – of uncertain origin, with a striking predilection for the anterior dorsal tongue.(1) Tumors occur across a broad age range, predominating in early-mid adulthood, and equally affect males and females.(2) Clinically, lesions typically present as a small (1-2 cm) painless mass, often of longstanding duration.(2) Simple excision is generally curative; however, a minority of cases have been reported to locally recur.(2, 3)

Morphologically distinctive, tumors are lobulated with thin fibrous septa separating bland polygonal-spindle cells arranged in reticular and globoid patterns.(2, 4, 5) The cytoplasm is

pale and eosinophilic. The nuclei are small and ovoid, with scattered atypia, hyperchromasia, pseudonuclear inclusions and binucleation; mitotic activity, if present, is typically sparse.(2) Interspersed between the cells is prominent chondromyxoid stroma;(2) however, overt chondroid differentiation is not generally encountered. The immunophenotype varies—most tumors are characterized by expression of glial fibrillary acid protein and S100 protein, with conflicting reports of immunoreactivity for keratin, smooth muscle actin and CD56.(2) There is a single report of a case with SOX10 expression. (6) Tumors are typically negative for CD34, p63 and epithelial membrane antigen. Ultrastructural examination fails to identify desmosomes or condensations of thin filaments, features that might suggest myoepithelial differentiation.(2) Rearrangement of *EWSR1* has been reported in a subset of cases, although a fusion partner has not, to date, been identified. (7)

Following the identification of an *RREB1-MKL2* fusion gene in an index case of ectomesenchymal chondromyxoid tumor, we undertook a retrospective review of additional cases to better characterize the clinical, immunohistochemical and molecular attributes of this enigmatic neoplasm.

## MATERIALS AND METHODS

### Case Selection

An *RREB1-MKL2* fusion gene was identified in the index patient (Patient 1) following routine diagnostic RNA Sequencing (RNA-Seq). Based on this unexpected observation retrospective searches were performed by each of the contributors for cases diagnosed as ectomesenchymal chondromyxoid tumor (2007-2018). Each case was reviewed to confirm the diagnosis prior to the initiation of immunohistochemical and RNA-Seq testing. This study received institutional Research Ethics Board approval.

### Immunohistochemistry

Representative formalin-fixed paraffin-embedded tissue blocks were selected for each case, and 4 micron sections cut onto positively charged slides. Using standard techniques, staining was performed for glial fibrillary acid protein, S100 protein, keratin (AE1/AE3), smooth muscle actin, desmin and myogenin (Supplementary Table 1). Tumor immunoreactivity was scored based on the percentage of positive cells (0: no staining; 1+: <5%; 2+: 5% to 25%; 3+: 26% to 50%; 4+: 51% to 75%; and 5+: 76% to 100%).

### RNA Sequencing

Using formalin-fixed, paraffin-embedded tissue, material was obtained from either scrolls (3-4 cut at 10 microns) or by scrapping unstained sections previously cut onto glass slides (4-5 cut at 4 microns). RNA was extracted using the ExpressArt FFPE Clear RNA Ready kit (Amsbio, Cambridge, MA). RNA-Seq libraries were prepared using 20-100 ng total RNA with the TruSight RNA Fusion Panel (Illumina, San Diego, CA). Each sample was sequenced with 76 base-pair paired-end reads on an Illumina MiSeq at 8 samples per flow cell (~3 million reads per sample). The results were analyzed using both the STAR and BOWTIE2 aligners, and Manta and JAFFA fusion callers, respectively.(8, 9)

## Fluorescence *In Situ* Hybridization

Fluorescence *in situ* hybridization (FISH) for *RREB1* and *MKL2* was performed as previously reported in detail.(10) Briefly, custom bacterial artificial chromosome (BAC) clone probes were designed to flank the target genes based on the UCSC genome browser (<http://genome.ucsc.edu>), and obtained from BACPAC sources of Children's Hospital of Oakland Research Institute (Oakland, CA; <http://bacpac.chori.org>) (Supplementary Table 2). DNA from each BAC was isolated and then labeled with fluorochromes by nick translation. Slides were prepared using formalin-fixed, paraffin-embedded tissue cut at 4 microns. The slides were deparaffinized, pretreated, and then hybridized with the denatured probes. Following an overnight incubation, the slides were rinsed, stained with 4',6-diamidino-2-phenylindole (DAPI), mounted, and examined using a Zeiss fluorescence microscope (Zeiss Axioplan, Oberkochen, Germany).

## RESULTS

A total of 21 cases were identified from the contributing institutions; six of the cases (Patients 13, 14, 16, 17, 18, 19) have previously been reported.(7, 11) The mean patient age was 40 years (range: 13-59 years). There were 13 females and 8 males (ratio, 1.6:1). Each of the tumors arose on the dorsal tongue; most were anterior, and a minority posterior. Most cases were treated by simple excision. Despite frequent microscopic extension to inked resection margins, only a single case was associated with local recurrence (Patient 10) (Table 1).

The size of the tumors ranged from 0.6 to 3.0 cm (mean, 1.5 cm); virtually all of the cases were circumscribed, with a pushing border; several tumors contained focal infiltration into the surrounding skeletal muscle. The overlying squamous epithelium was intact in all cases, lacking any well-developed pseudoepitheliomatous hyperplasia. The tumors were frequently multi-lobulated; the lobules were either separated by areas of endogenous stroma, or more frequently by fibrous septa (Figure 1). The cells ranged from polygonal to spindle-stellate. The cytoplasm was pale and eosinophilic to lightly basophilic. The nuclei were round to ovoid and frequently lobulated and hyperchromatic. Scattered cells showed atypia, pseudonuclear inclusions and binucleation. Almost all of the cases lacked conspicuous mitotic activity; however, rare cases contained 1-2 mitoses per 10 high power fields. Similar to prior reports, the architecture included sheets, cords, reticular and globoid patterns; cellular fascicles, microcystic-cystic and papillary patterns were rarely encountered. Occasional interstitial hemorrhage and/or hemosiderin deposition – in the absence of prior sampling – was identified. A single case contained necrosis and dystrophic calcification (Figure 2). The intervening stroma was myxoid and pale and basophilic; occasionally it was hyalinized; very rarely, isolated foci vaguely suggested hyaline cartilage. Sunburst amianthoid fibers were not identified.

The results of immunohistochemical staining are summarized in Table 2 and Figure 3. Briefly, similar to prior reports, there was relatively consistent expression of glial fibrillary acid protein. Immunoreactivity for S100 protein, pancytokeratin, smooth muscle actin and desmin expression was common, but tended to be weak and/or focal. A single case

contained significant myogenin expression. Immunohistochemistry was performed for SOX10 (N=7) and p63 (N=2), which were negative (data not shown).

Following RNA-Seq the index patient was found to have an *RREB1-MKL2* fusion gene. RNA-Seq was subsequently performed on Patients 2-10. As a mean of independent verification of the RNA-Seq fusion product, fluorescence *in situ* hybridization testing was applied to the recurrent lesion of Patient 10. The remaining cases (Patients 11-22) were examined by FISH alone (Figure 4). All but 2 cases (90.5%) were found to harbor *RREB1-MKL2* fusion genes. One patient was found to have an *EWSR1-CREM* fusion gene (Patient 2), while the remaining case lacked any fusion candidates, despite suitable RNA (Patient 4) (Figure 5). RNA-Seq of the cases with an *RREB1-MKL2* fusion product demonstrated identical breakpoints involving exon 8 of *RREB1* (NCBI Reference Sequence: NM\_001003699.3) and exon 11 of *MKL2* (NM\_001308142.1). The single case with an *EWSR1-CREM* fusion had breakpoints involving exon 8 of *EWSR1* (NM\_013986.3), and either exon 7 or 3 of *CREM* (NM\_181571.2, or NM\_001352467.1) depending on whether *CREM* transcript variant 1 or 32.

## DISCUSSION

Ectomesenchymal chondromyxoid tumor is a rare mesenchymal neoplasm of unknown histogenesis. Our series, amongst the largest to date, confirms prior reports of the relatively narrow clinical distribution of this enigmatic tumor; in addition, we expand the morphologic and immunohistochemical spectrum of this neoplasm. Finally, we demonstrate that the majority of ectomesenchymal chondromyxoid tumors are characterized by *RREB1-MKL2* fusions.

In this series tumors were found in patients from across a relatively broad age range (13-59 years), with a slight female predilection. All of our cases originated in the tongue. Indeed, virtually all prior reports of ectomesenchymal chondromyxoid tumor have occurred in this location. While a hard palate origin has been suggested in two reports,(12, 13) the first has been previously questioned,(3, 14–16) and the second is also noted to lack a prototypic morphology and immunophenotype. Most of the tumors in our series arose in the anterior tongue, but a minority involved the base of tongue.(4, 17, 18) Where clinically specified, all cases were dorsally situated. Despite several cases in this series with positive margins following excision, only a single case locally recurred and none metastasized. This would appear to confirm a clinically benign behavior.

Ectomesenchymal chondromyxoid tumor has a distinct morphology and immunophenotype. Since its initial report by Smith, *et al.* in 1995,(2) there have been few revisions to the original comprehensive histopathologic description; indeed, our findings were largely similar. The cells ranged from polygonal to spindle and stellate. Most cases contained, at least focally, the prototypic ‘net-like’ (reticular) arrangement of cells with abundant myxoid stroma. Clefting, papillary, cystic and more solid growth patterns were occasionally observed. Hyalinized eosinophilic stroma, calcification, hypercellularity, and necrosis were rare events. Similar to the earlier reports, immunoreactivity for glial fibrillary acid protein, S100 protein, keratin and actin were frequently observed;(2) glial fibrillary protein

notwithstanding, immunoreactivity tended to be patchy and/or weak. While there are conflicting reports on desmin expression,(18–20) our results suggest this is relatively common, although focal. We observed significant nuclear myogenin expression in a single, otherwise unremarkable, case.

Until now the molecular pathogenesis of ectomesenchymal chondromyxoid tumor has remained elusive. In a series of 11 cases Argyris, *et al.* identified *EWSR1* rearrangement in 3 cases (27%); 2 subsequent cases tested by Laco, *et al.* failed to show *EWSR1* rearrangement. (6) Following the discovery of a *RREB1-MKL2* fusion gene in our index patient, we confirmed, using a combination of RNA-Seq and fluorescence *in situ* hybridization, this fusion product in 19 of 21 cases (90%). The two cases lacking an *RREB1-MKL2* fusion did not possess an archetypical morphology. Nevertheless, as they currently fall within the accepted clinical and pathologic spectrum of ectomesenchymal chondromyxoid tumor, there is currently insufficient evidence to warrant rejection of the original diagnosis. One case (Patient 4) was cellular with infiltrative tongues resembling a somewhat atypical case presented by Portnof, *et al.*(3) The second case (Patient 2) was found to have an *EWSR1-CREM* fusion product by RNA-Seq; this case contained small nodules of polygonal cells with indistinct cell borders and prominent slit-like spaces. This was morphologically similar to at least two of the prior cases of ectomesenchymal chondromyxoid tumor with *EWSR1* rearrangement.(7) While further study is required, it is possible that cases with *EWSR1* rearrangement in this context may ultimately be more appropriately classified under the recently characterized family of myxoid mesenchymal tumors with *EWSR1 – CREB* family gene fusions.(10) In contrast to that seminal report, our patient was considerably older than the patients in that series, and our tumor was extracranial. The limited literature on myxoid mesenchymal neoplasms with *EWSR1 – CREM* makes it difficult to draw meaningful inferences to our case; moreover, one of us (BCD) has recently encountered a malignant small round cell neoplasm with an *EWSR1 – CREM* fusion gene in an extra cranial location.

Interestingly, a recent case of so-called ‘biphenotypic “oropharyngeal” sarcoma’ was reported to possess an *RREB1-MKL2* gene fusion.(21) In their article, Siegfried *et al.* describe a 3.5 cm parapharyngeal mass comprised of fascicles of bland spindle-ovoid cells with uniform nuclei and minimal mitotic activity, and occasional pseudoangiectatic and cystic spaces; immunohistochemistry demonstrated patchy staining for S100 protein, desmin, smooth muscle actin and myogenin. Anatomic proximity notwithstanding, this case does not appear to involve the base of tongue. And, while some of the cases in our series contained areas of increased cellularity and a fascicular-herringbone pattern, this was not a dominant finding amongst our cases.(21) Whether biphenotypic “oropharyngeal” sarcoma represents an atypical example of ectomesenchymal chondromyxoid tumor, or a distinct entity with a pleiotropic fusion gene – analogous to the relationship of *EWSR1-ATF1* in clear cell sarcoma, angiomatoid fibrous histiocytoma and hyalinizing clear cell carcinoma of salivary gland – is presently unclear.

The histogenesis of ectomesenchymal chondromyxoid tumor has been a subject of debate. It has been suggested to originate from an uncommitted ectomesenchymal cell derived from the neural crest.(1,2) Alternatively, it has been proposed to represent a myoepithelial-derived tumor of either minor salivary glands or soft tissue.(2, 22) Our molecular findings, combined

with the unique clinical and histopathologic attributes of this neoplasm, suggest ectomesenchymal chondromyxoid tumor represents a distinct entity. *MKL2* encodes Myocardin Like 2 – a transcription coactivator of serum response factor – that is involved in smooth and skeletal muscle differentiation,(23, 24) and neuronal development.(25) Siegfried, *et al.* eloquently describe how the *RREB1-MKL2* fusion gene – which is associated with increased *MKL2* expression – accounts for a biphenotypic immunophenotype.(21) There is a precedent for *MKL2* fusions in another mesenchymal neoplasm; *C11orf95-MKL2* fusions occur in chondroid lipoma(26, 27) which, similar to ectomesenchymal chondromyxoid tumor, is variably characterized by myxoid-chondroid matrix. Similar to many other translocation-associated neoplasms that undergo fundamental molecular re-programming(28) – with a concomitant absence of an overt line of differentiation (e.g., Ewing sarcoma and synovial sarcoma) – it is conceivable that a cell of origin may remain elusive for some time; that being said, Smith *et al.*'s original hypothesis of an uncommitted ectomesenchymal cell progenitor remains a distinct possibility.(2)

In summary, this study represents the largest series of molecularly interrogated ectomesenchymal chondromyxoid tumors to date. We confirm the strong predilection of this neoplasm for the dorsal aspect of the tongue, and expand the morphologic and immunohistochemical spectrum of findings for this tumor. Finally, we demonstrate that the overwhelming majority – if not all, if two morphologic outliers can be excluded – of cases of ectomesenchymal chondromyxoid tumor are characterized by an *RREB1-MKL2* fusion gene.

## Supplementary Material

Refer to Web version on PubMed Central for supplementary material.

## Acknowledgments

The authors are grateful to Mr. Anthony Wing and Ms. Jasmine Wong for their expertise in immunohistochemistry; Ms. Grace Murray (Illumina, San Diego, CA) for generously providing test kits; and, Ms. Evangeline Agro and Ms. Sharon Crafter for facilitating RNA-Seq testing.

**Supported in part by:** P50 CA140146-01 (CRA); P30-CA008748 (CRA); Kristen Ann Carr Foundation (CRA); Cycle for Survival (CRA)

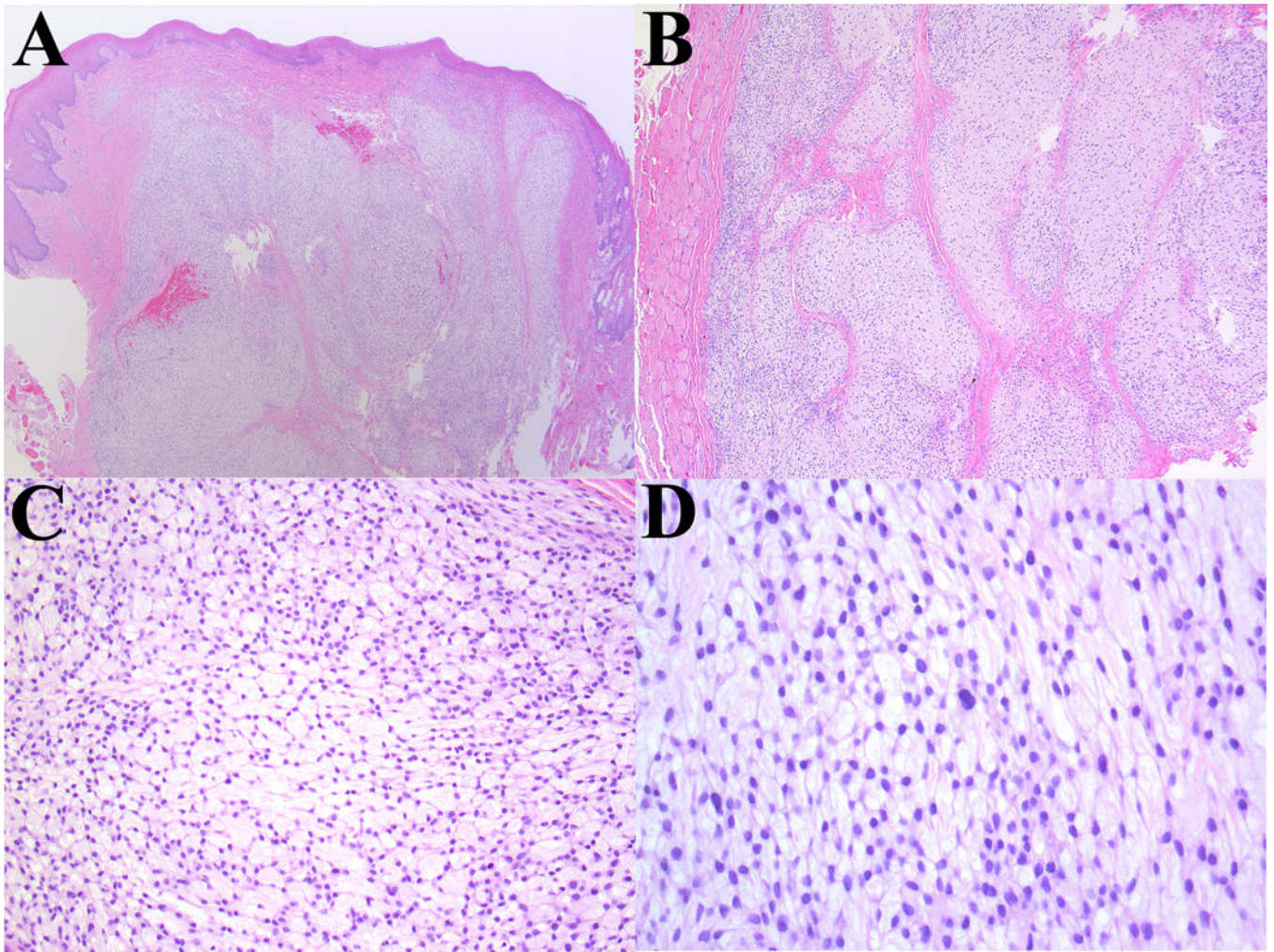
## References

1. Bishop JA, Gnepp DR, Ro JY. Ectomesenchymal chondromyxoid tumour. In: El-Naggar AK, Chan JKC, Grandis JR, et al., editors WHO Classification of Head and Neck Tumours. Lyon: IARC; 2017. 119–120.
2. Smith BC, Ellis GL, Meis-Kindblom JM, et al. Ectomesenchymal chondromyxoid tumor of the anterior tongue. Nineteen cases of a new clinicopathologic entity. *Am J Surg Pathol.* 1995; 19:519–530. [PubMed: 7726361]
3. Portnof JE, Friedman JM, Reich R, et al. Oral ectomesenchymal chondromyxoid tumor: case report and literature review. *Oral Surg Oral Med Oral Pathol Oral Radiol Endod.* 2009; 108:e20–24.
4. Seo SH, Shin DH, Kang HJ, et al. Reticulated myxoid tumor of the tongue: 2 cases supporting an expanded clinical and immunophenotypic spectrum of ectomesenchymal chondromyxoid tumor of the tongue. *Am J Dermatopathol.* 2010; 32:660–664. [PubMed: 20661118]

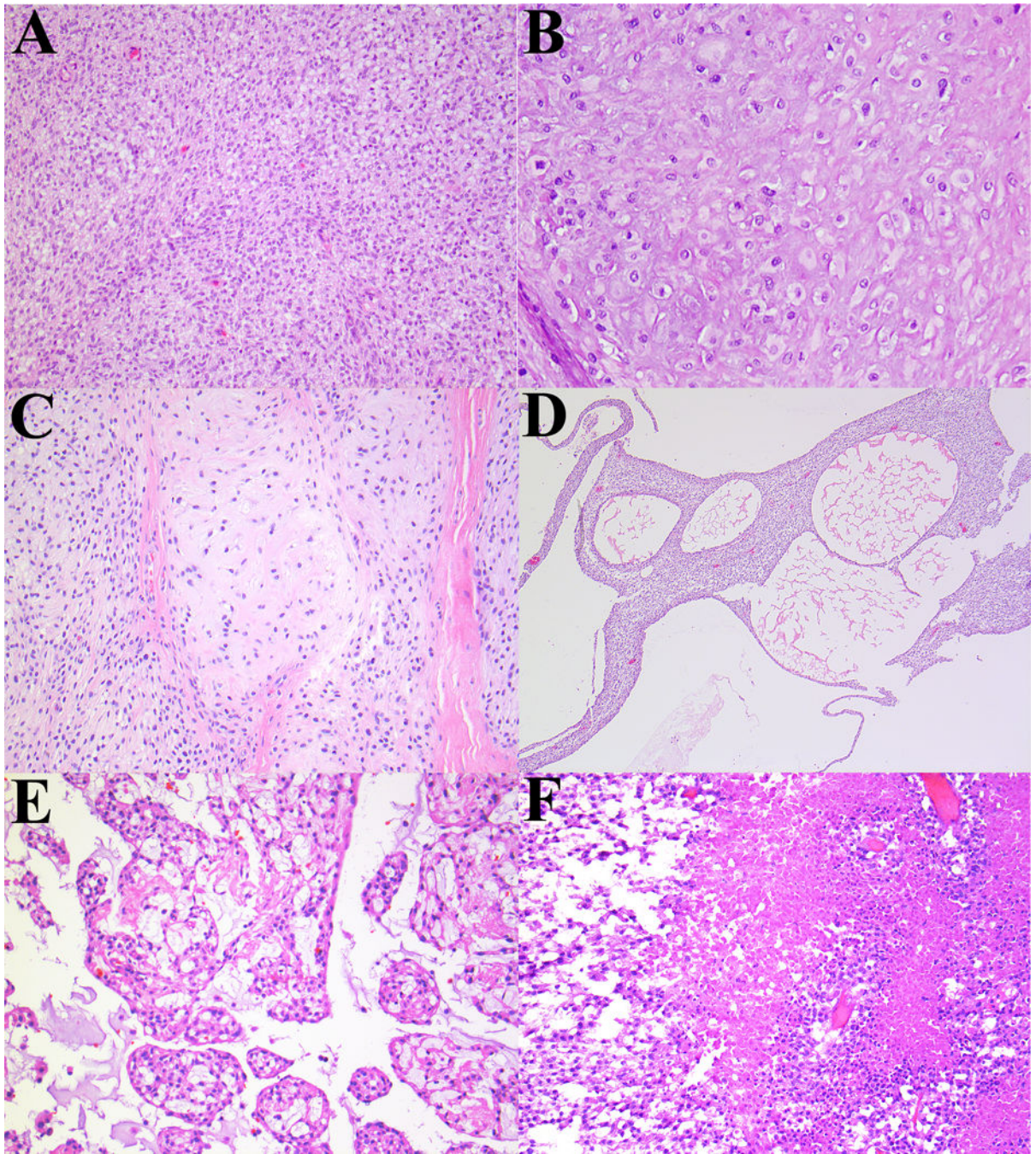
5. Ide F, Mishima K, Saito I. Ectomesenchymal chondromyxoid tumor of the anterior tongue with myxoglobulosislike change. *Virchows Arch.* 2003; 442:302–303. [PubMed: 12647223]
6. Laco J, Mottl R, Hobling W, et al. Cyclin D1 Expression in Ectomesenchymal Chondromyxoid Tumor of the Anterior Tongue. *Int J Surg Pathol.* 2016; 24:586–594. [PubMed: 27240862]
7. Argyris PP, Bilodeau EA, Yancoskie AE, et al. A subset of ectomesenchymal chondromyxoid tumours of the tongue show EWSR1 rearrangements and are genetically linked to soft tissue myoepithelial neoplasms: a study of 11 cases. *Histopathology.* 2016; 69:607–613. [PubMed: 27010880]
8. Liu S, Tsai WH, Ding Y, et al. Comprehensive evaluation of fusion transcript detection algorithms and a meta-caller to combine top performing methods in paired-end RNA-seq data. *Nucleic Acids Res.* 2016; 44:e47. [PubMed: 26582927]
9. Chen X, Schulz-Trieglaff O, Shaw R, et al. Manta: rapid detection of structural variants and indels for germline and cancer sequencing applications. *Bioinformatics.* 2016; 32:1220–1222. [PubMed: 26647377]
10. Kao YC, Sung YS, Zhang L, et al. EWSR1 Fusions With CREB Family Transcription Factors Define a Novel Myxoid Mesenchymal Tumor With Predilection for Intracranial Location. *Am J Surg Pathol.* 2017; 41:482–490. [PubMed: 28009602]
11. Schep LA, Bullock MJ, Taylor SM. Ectomesenchymal Chondromyxoid Tumour of the Dorsal Tongue Presenting with Impaired Speech. *Case Rep Otolaryngol.* 2016; 2016:7342910. [PubMed: 27239359]
12. Nigam S, Dhingra KK, Gulati A. Ectomesenchymal chondromyxoid tumor of the hard palate—a case report. *J Oral Pathol Med.* 2006; 35:126–128. [PubMed: 16430745]
13. Gouvea AF, Diaz KP, Leon JE, et al. Nodular lesion in the anterior hard palate. *Oral Surg Oral Med Oral Pathol Oral Radiol.* 2012; 114:154–159. [PubMed: 22769404]
14. Kato MG, Erkul E, Brewer KS, et al. Clinical features of ectomesenchymal chondromyxoid tumors: A systematic review of the literature. *Oral Oncol.* 2017; 67:192–197. [PubMed: 28351576]
15. Ide F. Chondromyxoid tumor of palate. *J Oral Pathol Med.* 2006; 35:523–524. author reply 524. [PubMed: 16918608]
16. Allen CM. The ectomesenchymal chondromyxoid tumor: a review. *Oral Dis.* 2008; 14:390–395. [PubMed: 18593455]
17. Cardin MJ, Fiset PO, Zeitouni AG, et al. Ectomesenchymal chondromyxoid tumour of the posterior tongue. *Head Neck Pathol.* 2014; 8:329–333. [PubMed: 24288100]
18. Aldojain A, Jaradat J, Summersgill K, et al. Ectomesenchymal Chondromyxoid Tumor: A Series of Seven Cases and Review of the Literature. *Head Neck Pathol.* 2015; 9:315–322. [PubMed: 25404177]
19. Pires FR, Abrahao AC, Cabral MG, et al. Clinical, histological and immunohistochemical features of ectomesenchymal chondromyxoid tumor. *Oral Surg Oral Med Oral Pathol Oral Radiol Endod.* 2009; 108:914–919. [PubMed: 19800267]
20. de Visscher JG, Kibbelaar RE, van der Waal I. Ectomesenchymal chondromyxoid tumor of the anterior tongue. Report of two cases. *Oral Oncol.* 2003; 39:83–86. [PubMed: 12457726]
21. Siegfried A, Romary C, Escudie F, et al. RREB1-MKL2 fusion in biphenotypic “oropharyngeal” sarcoma: New entity or part of the spectrum of biphenotypic sinonasal sarcomas? *Genes Chromosomes Cancer.* 2017
22. Nikitakis NG, Argyris P, Sklavounou A, et al. Oral myoepithelioma of soft tissue origin: report of a new case and literature review. *Oral Surg Oral Med Oral Pathol Oral Radiol Endod.* 2010; 110:e48–51. [PubMed: 20955943]
23. Cen B, Selvaraj A, Prywes R. Myocardin/MKL family of SRF coactivators: key regulators of immediate early and muscle specific gene expression. *J Cell Biochem.* 2004; 93:74–82. [PubMed: 15352164]
24. Selvaraj A, Prywes R. Megakaryoblastic leukemia-1/2, a transcriptional co-activator of serum response factor, is required for skeletal myogenic differentiation. *J Biol Chem.* 2003; 278:41977–41987. [PubMed: 14565952]



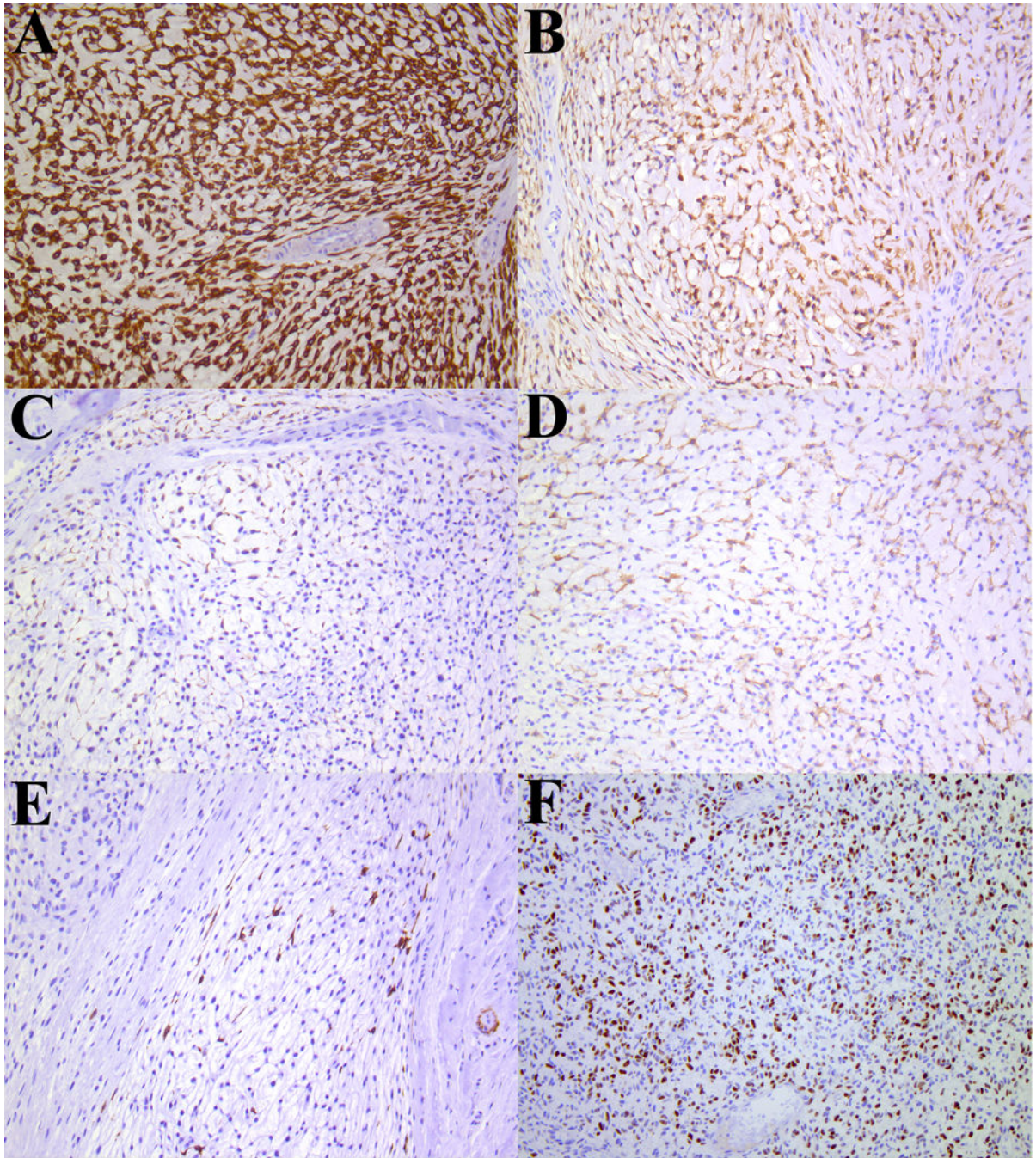
25. Mokalled MH, Johnson A, Kim Y, et al. Myocardin-related transcription factors regulate the Cdk5/Pctaire1 kinase cascade to control neurite outgrowth, neuronal migration and brain development. *Development*. 2010; 137:2365–2374. [PubMed: 20534669]
26. Huang D, Sumegi J, Dal Cin P, et al. C11orf95-MKL2 is the resulting fusion oncogene of t(11;16)(q13;p13) in chondroid lipoma. *Genes Chromosomes Cancer*. 2010; 49:810–818. [PubMed: 20607705]
27. Flucke U, Tops BB, de Saint Aubain Somerhausen N, et al. Presence of C11orf95-MKL2 fusion is a consistent finding in chondroid lipomas: a study of eight cases. *Histopathology*. 2013; 62:925–930. [PubMed: 23672313]
28. Garcia CB, Shaffer CM, Alfaro MP, et al. Reprogramming of mesenchymal stem cells by the synovial sarcoma-associated oncogene SYT-SSX2. *Oncogene*. 2012; 31:2323–2334. [PubMed: 21996728]



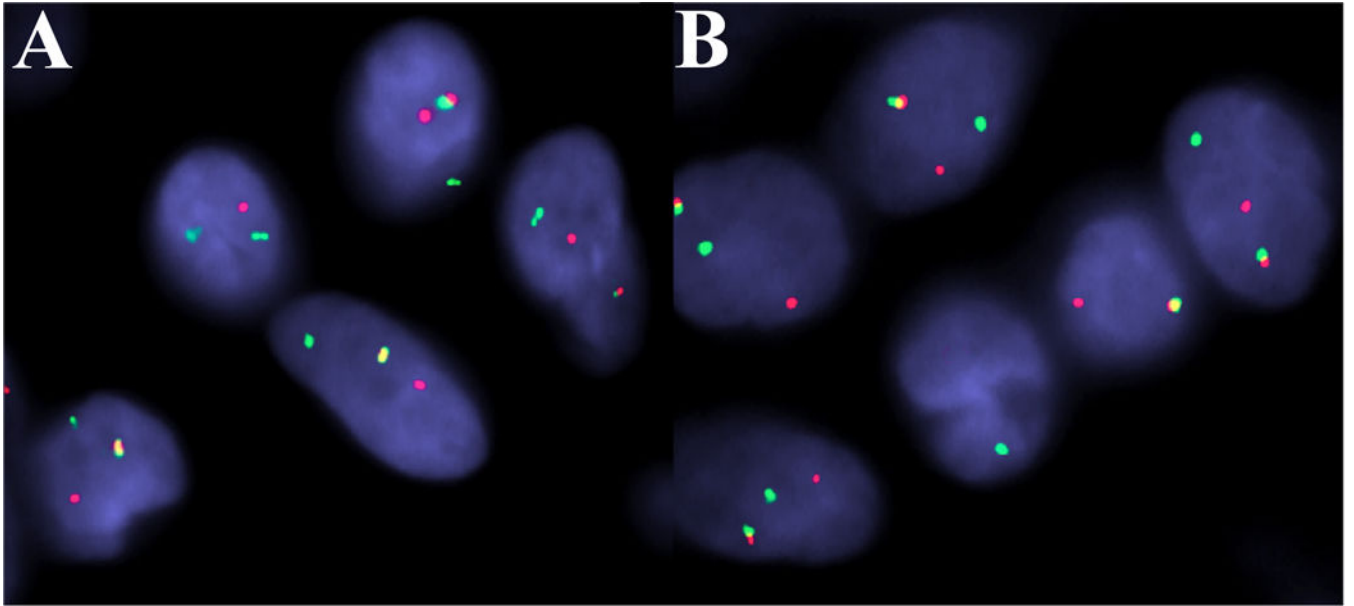
**Figure 1.** Representative photomicrographs from a conventional case of ectomesenchymal chondromyxoid tumor (Patient 3). (A) Low-power magnification showing circumscribed neoplasm with pushing margin. (B) Intermediate magnification highlighting the presence of fibrous septa separating tumor lobules. (C) Spindle-stellate cells with a reticular, or 'net-like' pattern and abundant myxoid stroma. (D) Scattered cytologic atypia and multinucleation; however, mitotic activity is inconspicuous.



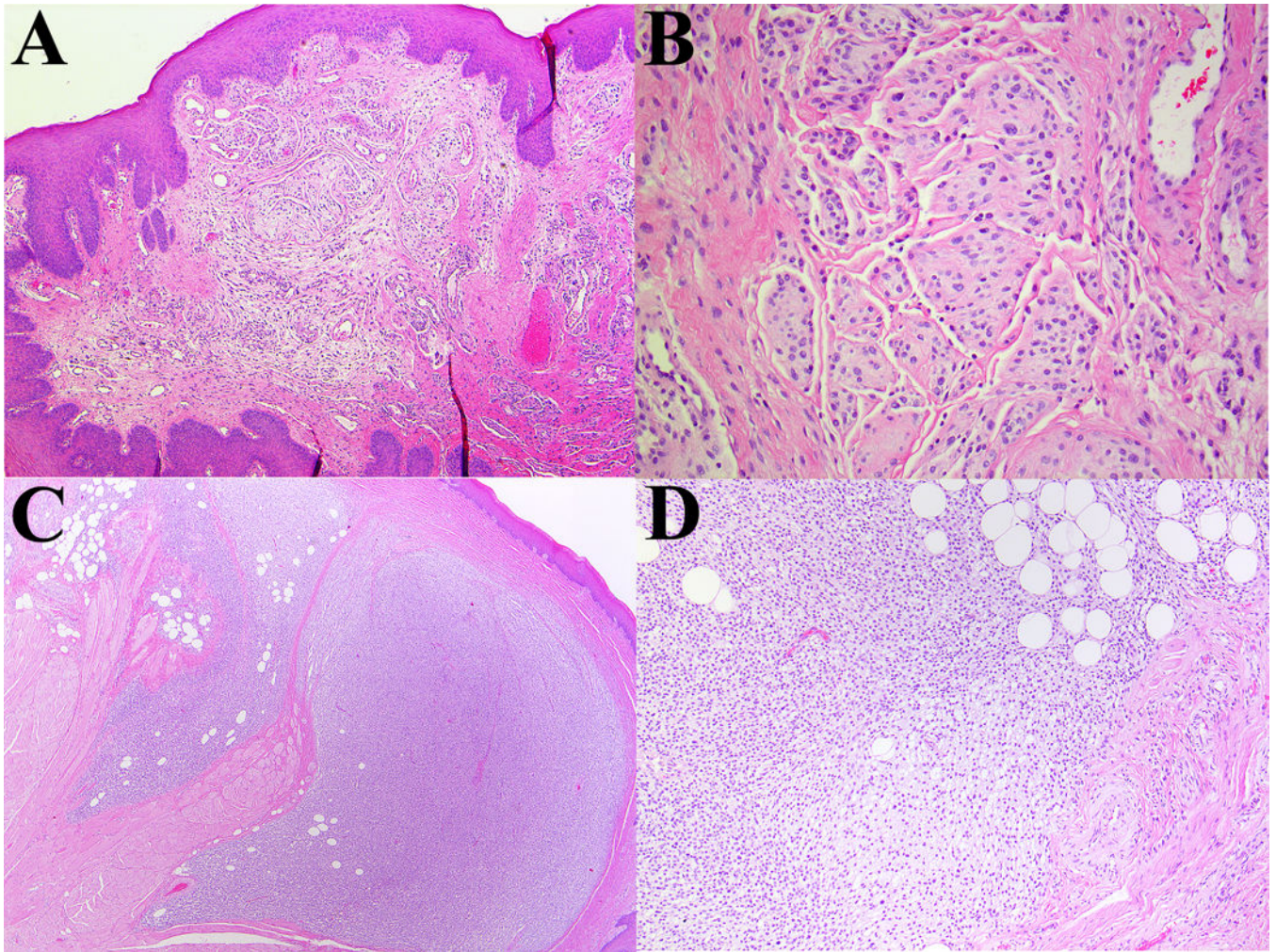
**Figure 2.** Less common features observed in ectomesenchymal chondromyxoid tumor. (A) Cellular spindle cell areas with a vague fascicular pattern. (B) Eosinophilic hyaline stroma. (C) Stroma vaguely suggestive of hyaline cartilage. (D) Microcystic-cystic pattern. (E) Nodular-cribriform pattern. (F) Necrosis.



**Figure 3.** Representative photomicrographs of immunophenotype of ectomesenchymal chondromyxoid tumor (Patient 3). (A) Glial fibrillary acid protein, (B) S100 protein, (C) keratin (AE1/AE3), (D) desmin, (E) smooth muscle actin and (F) myogenin; all photomicrographs x200.



**Figure 4.** Representative fluorescence *in situ* hybridization in ectomesenchymal chondromyxoid tumor (Patient 20). Rearrangement of: (A) *MKL2*, and (B) *RREB1*. (Both images: red, centromeric; green, telomeric.)



**Figure 5.** Representative photomicrographs of ectomesenchymal chondromyxoid tumor lacking *RREB1-MKL2* fusion partners. (A/B) A neoplasm with an *EWSR1-CREM* fusion product contains lobules of bland cells. (C/D) A neoplasm lacking any gene fusions by RNA-Seq. The tumor is infiltrative and contains an adipocytic component. The lesion is cellular with less conspicuous myxoid component.

**Table 1**

Clinical and demographic information.

Patient	Age (y)	Sex	Location	Size and clinical findings
1	31	F	Tongue, NOS	0.9 cm. Excised with negative margin
2	48	M	Tongue, dorsal, tip	0.6 cm. Shave biopsy. No evidence of recurrence at 1 year
3	39	F	Tongue, left dorsal, posterior	1.1 cm. < 2 months follow-up
4	54	F	Tongue, dorsal, anterior	1.4 cm. Re-excision, with positive margin. No report of recurrence
5	54	M	Tongue, dorsal	Not available
6	23	M	Tongue, left anterior	3.0 cm. No evidence of recurrence at 2 years
7	13	F	Tongue, right midline dorsal	2.0 cm soft mass
8	45	F	Tongue, left dorsal	Size not specified. 6-7 month asymptomatic mass
9	54	M	Tongue, left anterior	1.2 cm. Excised with negative margins. No evidence of recurrence at 1.4 years
10	35	M	Tongue, left anterior	0.7 cm. Excised with positive margins. Recurred at 41 months. No further recurrences after 4 years
11	14	F	Tongue, midline anterior	1.5 cm. Excised with positive margins. No evidence of recurrence after 8.5 years
12*	49	F	Tongue, dorsal lateral	2.1 cm
13*	33	F	Tongue, NOS	Not available
14	50	F	Tongue, dorsal tip	2.4 cm. Excised with negative margin. LTF
15*	53	F	Tongue, NOS	Not available
16*	59	M	Tongue, NOS	Not available
17*	31	F	Tongue, NOS	Not available
18*	51	M	Tongue, midline dorsal, anterior	2.5 cm. 15-year history prior to excision
19	40	F	Tongue, right dorsal, anterolateral	1.0 cm. Slow-growing lump x3-5 months. Margin focally positive, but no report of recurrence
20	51	M	Tongue, NOS	0.7 cm. Margin focally positive, with no report of recurrence
21	15	F	Tongue, right dorsal, posterior	0.7 cm

\* Previously reported.(7, 11) Abbreviations: F (female); LTF (lost to follow-up); M (male); NOS (not otherwise specified); y (years).

Summary of immunohistochemical and molecular attributes of ectomesenchymal chondromyxoid tumor.

**Table 2**

Patient	Immunohistochemistry						Molecular	
	GFAP	S100	Keratin	Desmin	Myogenin	SMA	Method	Result
1	-	3+	-	1+	N/P	1+	RNAseq	<i>RREB1-MKL2</i>
2	-	-	-	-	-	-	RNAseq	<i>EWSR1-CREM</i>
3	5+	5+	1+	1+	-	3+	RNAseq	<i>RREB1-MKL2</i>
4	4+	3+	1+	-	-	1+	RNAseq	Negative
5	N/P	N/P	N/P	N/P	N/P	N/P	RNAseq	<i>RREB1-MKL2</i>
6	5+	5+	2+	1+	2+	2+	RNAseq	<i>RREB1-MKL2</i>
7	5+	2+	-	N/P	N/P	-	RNAseq	<i>RREB1-MKL2</i>
8	5+	3+	-	N/P	N/P	N/P	RNAseq	<i>RREB1-MKL2</i>
9	1+	3+	-	-	-	3+	RNAseq	<i>RREB1-MKL2</i>
10	2+	3+	-	-	-	3+	RNAseq & FISH	<i>RREB1-MKL2</i>
11	5+	3+	2+	4+	-	2+	RNAseq	<i>RREB1-MKL2</i>
12	4+	2+	1+	1+	-	N/P	FISH	<i>RREB1-MKL2</i>
13	5+	2+	1+	1+	-	N/P	FISH	<i>RREB1-MKL2</i>
14	4+	1+	-	1+	-	N/P	FISH	<i>RREB1-MKL2</i>
15	4+	N/P	-	N/P	-	N/P	FISH	<i>RREB1-MKL2</i>
16	4+	1+	-	-	-	N/P	FISH	<i>RREB1-MKL2</i>
17	2+	N/P	-	N/P	-	N/P	FISH	<i>RREB1-MKL2</i>
18	5+	5+	2+	1+	-	3+	FISH	<i>RREB1-MKL2</i>
19	5+	2+	2+	1+	-	N/P	FISH	<i>RREB1-MKL2</i>
20	4+	1+	1+	3+	1+	3+	FISH	<i>RREB1-MKL2</i>
21	5+	2+	2+	-	-	-	FISH	<i>RREB1-MKL2</i>

Abbreviations: - (negative); FISH (fluorescence *in situ* hybridization); GFAP (glial fibrillary acid protein); N/P (not performed); SMA (smooth muscle actin).