

Cite this article as: Mokhles S, Macbeth F, Treasure T, Younes RN, Rintoul RC, Fiorentino F *et al.* Corrigendum to 'Systematic lymphadenectomy versus sampling of ipsilateral mediastinal lymph-nodes during lobectomy for non-small cell lung cancer: a systematic review of randomized trials and a meta-analysis'. *Eur J Cardiothorac Surg* 2018;54:795.

## Corrigendum to 'Systematic lymphadenectomy versus sampling of ipsilateral mediastinal lymph-nodes during lobectomy for non-small cell lung cancer: a systematic review of randomized trials and a meta-analysis' [Eur J Cardiothorac Surg 2017;51:1149-1156]†

Sahar Mokhles<sup>a</sup>, Fergus Macbeth<sup>b</sup>, Tom Treasure<sup>c,\*</sup>, Riad N. Younes<sup>d</sup>, Robert C. Rintoul<sup>e</sup>,  
 Francesca Fiorentino<sup>f</sup>, Ad J.J.C. Bogers<sup>a</sup> and Johanna J.M. Takkenberg<sup>a</sup>

<sup>a</sup> Department of Cardio-thoracic surgery, Erasmus University Medical Center, Rotterdam, The Netherlands

<sup>b</sup> Wales Cancer Trials Unit, Cardiff University, Cardiff, UK

<sup>c</sup> Clinical Operational Research Unit, University College London, London, UK

<sup>d</sup> Hospital Alemao Oswaldo Cruz, Sao Paulo, Brazil

<sup>e</sup> Department of Thoracic Oncology, Papworth Hospital, Cambridge, UK

<sup>f</sup> Imperial College Trials Unit & Division of Surgery, Imperial College London, London, UK

\* Corresponding author. Clinical Operational Research Unit UCL, 4 Taviton Street, WC1H 0BT London, UK. Tel: +44-01233-740378; e-mail: tom.treasure@gmail.com (T. Treasure).

The number of events in ACOSOG Z0031 trial regarding local and distant recurrence forest plots are reversed in our publication [local recurrence: 24 in mediastinal lymph node sampling (MLNS) arm vs 30 in mediastinal lymph node dissection (MLND) arm; distant recurrence 111 in MLNS arm vs 114 in MLND arm]. We have corrected the numbers in parts C and D of Figure 2 as follows:

- local recurrence OR would be 0.92 instead of 0.74
- distant recurrence OR would be 0.85 instead of 0.82

We regret the error and we are relieved that this makes no difference to our conclusion and will not have misled practice.

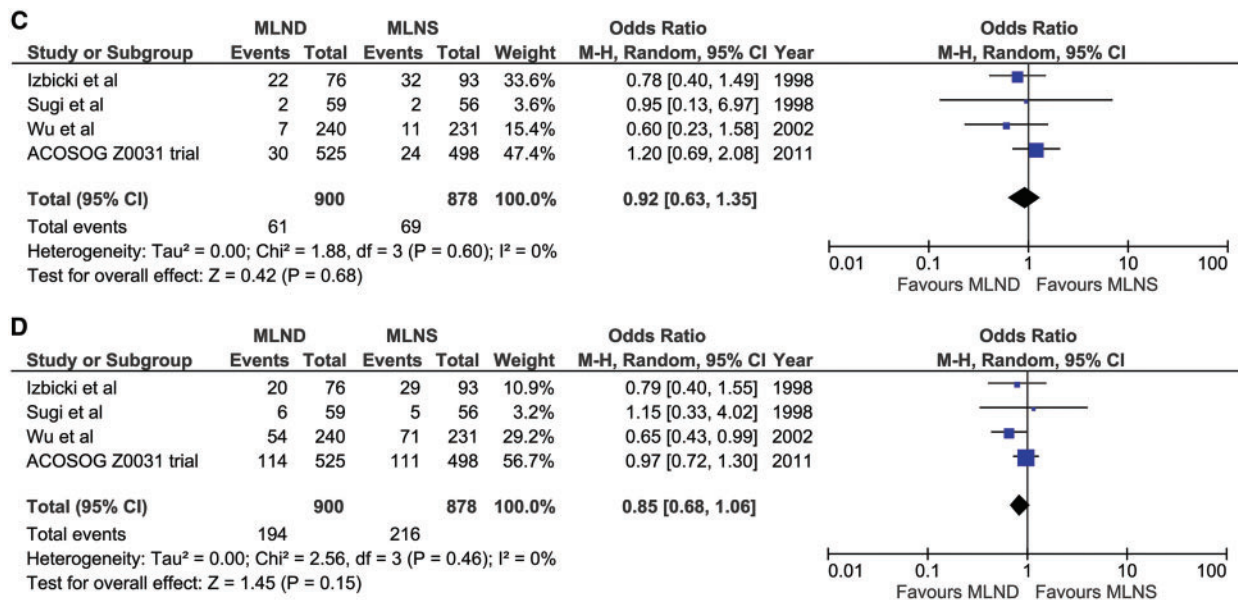


Figure 2: Forest plots of comparison in meta-analysis. (C) Local recurrence odds ratio. (D) Distant recurrence odds ratio.

†Doi of original article: 10.1093/ejcts/ezw439