

# Staphylococcus aureus in the nose and throat of Iowan families

B. M. Hanson<sup>1,\*</sup>, A. E. Kates<sup>1,†</sup>, S. M. O'Malley<sup>1</sup>, E. Mills<sup>1</sup>, L. A. Herwaldt<sup>1</sup>, J. C. Torner<sup>1</sup>, J. D. Dawson<sup>1</sup>, S. A. Farina<sup>1</sup>, C. Klostermann<sup>1</sup>, J. Y. Wu<sup>1</sup>, M. K. Quick<sup>1</sup>, B. M. Forshey<sup>1</sup> and T. C. Smith<sup>2,‡</sup>

<sup>1</sup>University of Iowa, Iowa City, Iowa, USA and <sup>2</sup>Kent State University, Kent, Ohio, USA

## Original Paper

\*Current address: School of Public Health, Center for Infectious Diseases, The University of Texas Health Science Center at Houston; Center for Antimicrobial Resistance and Microbial Genomics, University of Texas, McGovern School of Medicine at Houston, TX, USA.

†Current address: Department of Medicine, Division of Infectious Disease School of Medicine and Public Health, University of Wisconsin-Madison, WI, USA.

‡Current address: Department of Biostatistics, Environmental Health Sciences, and Epidemiology, Kent State University, Kent, Ohio, USA.

**Cite this article:** Hanson BM *et al* (2018). *Staphylococcus aureus* in the nose and throat of Iowan families. *Epidemiology and Infection* **146**, 1777–1784. <https://doi.org/10.1017/S0950268818001644>

Received: 15 November 2017

Revised: 16 April 2018

Accepted: 23 May 2018

First published online: 22 June 2018

### Key words:

Community; epidemiology; MRSA; *S. aureus*

### Author for correspondence:

Tara C. Smith, E-mail: [tsmit176@kent.edu](mailto:tsmit176@kent.edu)

## Abstract

The study objective was to determine the prevalence of *Staphylococcus aureus* colonisation in the nares and oropharynx of healthy persons and identify any risk factors associated with such *S. aureus* colonisation. In total 263 participants (177 adults and 86 minors) comprising 95 families were enrolled in a year-long prospective cohort study from one urban and one rural county in eastern Iowa, USA, through local newspaper advertisements and email lists and through the Keokuk Rural Health Study. Potential risk factors including demographic factors, medical history, farming and healthcare exposure were assessed. Among the participants, 25.4% of adults and 36.1% minors carried *S. aureus* in their nares and 37.9% of adults carried it in their oropharynx. The overall prevalence was 44.1% among adults and 36.1% for minors. Having at least one positive environmental site for *S. aureus* in the family home was associated with colonisation (prevalence ratio: 1.34, 95% CI: 1.07–1.66). The sensitivity of the oropharyngeal cultures was greater than that of the nares cultures (86.1% compared with 58.2%, respectively). In conclusion, the nares and oropharynx are both important colonisation sites for healthy community members and the presence of *S. aureus* in the home environment is associated with an increased probability of colonisation.

## Introduction

*Staphylococcus aureus* colonises approximately 30% of the population [1] with the anterior nares historically considered the most frequent carriage site [2, 3]. Colonised persons carry the bacterium asymptotically and may transmit it to susceptible persons either directly or through contact with fomites. While such colonisation often does not harm the host, it increases the risk of infections in both community and hospital settings [4].

*S. aureus* is a common cause of infections in hospitals and in the community. In 2014, the Active Bacterial Core surveillance program reported that methicillin-resistant *S. aureus* (MRSA) caused 72 444 invasive infections in the USA, 16 522 of which were community-onset and although overall MRSA infections decreased from 2013 to 2014 by 5.36%, community-associated infections increased by 1.57% [5]. It has been suggested understanding the patient's environment, household transmission dynamics and colonisation among persons living in the community are key to reducing community-associated infections [6].

While many prior studies have assessed *S. aureus* colonisation in healthcare settings [7, 8], few have addressed colonisation in the community [9] and more rarely among persons in rural areas [10] who make up 20% of the US population [11]. Prevalence estimates for *S. aureus* oropharyngeal colonisation in healthy community populations have ranged from 7.7% to 56.7% and the proportion carrying *S. aureus* in their oropharynx, but not in their nares, has ranged from 6% to 22.7% [12–16]. Moreover, there is a paucity of data on differences in *S. aureus* colonisation prevalence based upon population density owing to the lack of studies designed specifically to look for these differences.

To address this knowledge gap, we assessed the prevalence of *S. aureus* carriage in one rural and one urban population in Iowa to better define colonisation prevalence and associated risk factors in the community setting. Specifically, we recorded the prevalence of nasal and oropharyngeal carriage, risk factors for colonisation and applied molecular epidemiological tools to characterise *S. aureus* isolates recovered from participants and their household environment.

## Materials and methods

### Study design and sample collection

Families from Johnson and Keokuk Counties, Iowa that met the study inclusion criteria were enrolled in a prospective cohort study between 6 October 2011 and 4 January 2012. These counties were chosen to reflect an urban (Iowa City, within Johnson County) and a rural

(Keokuk County) population in Iowa [11]. This paper presents the baseline data and cohort description for all participants in the cohort.

Participants were recruited, either through local newspaper advertisements and email lists and/or for rural families through their existing participation in the Keokuk County Rural Health Study [17]. Eligibility of participants was assessed and a scheduled visit was arranged for family enrollment. Participants in Keokuk County were contacted initially by letter and later by phone to determine eligibility and schedule the enrollment visit. Trained staff enrolled eligible families in their homes, administered questionnaires, collected environmental samples and trained adult participants to swab their nares and oropharynx.

Study inclusion criteria were: must be able to provide consent, assent, or have parents willing to provide consent; speak English; be willing to complete the enrollment questionnaire as well as the weekly follow-up questionnaires. The University of Iowa institutional review board approved the study protocols. After consenting, all participants completed questionnaires providing detailed information on demographic factors, medical history, farming exposure, healthcare exposure and other possible risk factors. Farming exposure for minors, designated as 'worked with livestock', refers to work performed for pay as well as work performed as a part of family responsibilities and chores.

### Isolation and Identification of *S. aureus*

For self-swabbing, participants were instructed to insert the swab into their nostril so the bottom part of the cotton was just inside the anterior naris, circle the swab three times and then switch nostrils and repeat. To sample their oropharynx, participants were instructed to swab the roof of their mouth beyond the soft palate, but not far enough back to cause a gag reflex. Additionally, parents were trained to swab the nares of participating children in their household. Samples were collected using BBL CultureSwabs with Liquid Stuart Medium (Becton, Dickinson & Co., Sparks MD, USA) and transported on ice directly to the Center for Emerging Infectious Diseases (CEID).

Three-inch by four-inch disposable duster cloths (Swiffer® Sweeper™ Dry Pad; Procter & Gamble, Cincinnati, OH, USA) were used to collect samples from six commonly touched sites (kitchen sink handle, oven knobs, refrigerator door handle, primary television remote, main bathroom light switch and main bathroom toilet flush lever). Each site was sampled using a new, sterile cloth. Surfaces were wiped in all directions for 1 minute. The cloth was placed into a dry, sterile bag and placed on ice for transport to the CEID.

Swabs were inoculated into 5 ml of Baird-Parker broth and incubated for 24 h at 35°C. Environmental sample cloths were homogenised for one minute in 25 ml of 1.0% peptone after which 5 ml was removed and inoculated into 5 ml of 2× Baird-Parker broth and incubated for 24 h. All samples were plated onto Baird-Parker agar and BBL CHROMagar MRSA II (Becton, Dickinson & Co., La Jolla CA, USA) and following incubation at 35°C for 48 h, presumptive *S. aureus* colonies were streaked onto Columbia CNA agar with 5% sheep blood (Becton, Dickinson & Co) and incubated for 24 h.

*S. aureus* was confirmed with the catalase, coagulase and Pastorex Staph Plus rapid latex agglutination tests (Bio-Rad, Redmond, Washington, USA) and all isolates were subjected to molecular testing.

### Molecular testing

Bacterial genomic DNA was extracted with the Promega Wizard Genomic DNA purification kit (Promega Corporation, Madison WI, USA). Multiplex polymerase chain reaction (PCR) was used to assess the presence of the *mecA* gene, the *S. aureus*-specific *nuc* gene and 16S rRNA gene to confirm the identity of *S. aureus* [18]. PCR was also used to detect the Pantone-Valentine leukocidin (PVL) [19] and to amplify the *spa* gene [20] for strain typing using the Ridom StaphType software (Ridom GmbH, Germany). Isolates unable to be typed after three attempts were labeled as non-typable (NT) [21]. The Based Upon Repeat Pattern (BURP) algorithm was used to identify and characterise genetic clusters [22]. All molecular procedures included known positive (USA300 SF8300 strain) and negative (sterile water) controls.

As carriage of the same *S. aureus* strain by multiple members of the same family artificially inflates the strain prevalence, we adjusted for duplicate strains within-family colonisation, by including only one isolate of a specific strain per family when calculating *spa* type prevalence as well as for *mecA* and PVL genes. Isolates were considered to be the same strain if they had the same *spa* type, *mecA* and PVL profiles.

### Statistical analysis

Data were analysed using SAS version 9.3 and R version 2.15.3. The demographics of participants were compared using the Student's *t* test (age), the  $\chi^2$  test (gender) and the Fisher's Exact Test (race). Random effects logistic regression was utilised to model the effect of possible risk factors on the probability of colonisation while accounting for correlation within families and counties [23]. Risk factors were modeled separately for adults and minors as minors submitted only nasal swabs. The adult model was adjusted for age while the minor's model was adjusted for age, gender and interaction between age and gender. Conditional prevalence ratios (PRs) were estimated from the random effects logistic regression model [23]. All associations were considered significant at  $\leq 0.05$ .

Preliminary models run using proc glimmix with both family and county random effects indicated that county did not have an effect after the risk factors and the random effect for the family were included (data not shown). The only random effect utilised within the analyses presented here was a family random effect. For each risk factor, proc glimmix was used to obtain starting values for the final model which used proc nlmixed, the latter allowed for the estimation of prevalence ratios (PR) rather than odds ratios as PRs have been shown to be truer estimates of the risk for non-rare outcomes [23]. PRs were estimated at the midpoint age for adults (43 years) and for minors were estimated for females at the midpoint age (10 years). Risk factors were assessed as dichotomous or categorical with the exception of house size, number of children and environmental contamination, which were all modeled as discrete numeric variables. Individuals with a missing data point were removed from the specific analyses for that data point.

### Results

A total of 263 participants were enrolled (177 adults, 86 minors), comprising 95 families. The average age of adults was 43.2 years (range: 22.2–67.7 years) and 9.9 years (0.4–18.2 years) for minors. Adult participants were significantly older in the rural county than in the urban county ( $P \leq 0.001$ ). One hundred and forty-four

**Table 1.** Prevalence of *S. aureus* and MRSA isolated from participants by county

	MSSA (%)	MRSA (%)	Total <i>S. aureus</i> (%)
<b>Adults</b>			
Urban county	39/90 (43)	7/90 (7)	46/90 (51)
Rural county	31/87 (35)	2/87 (2)	33/87 (37)
Total	70/177 (40)	9/177 (5)	79/177 (45)
<b>Minors</b>			
Urban county	19/49 (38)	1/49 (2)	20/49 (40)
Rural county	11/37 (29)	0/37 (0)	11/37 (29)
Total	30/86 (34)	1/86 (1)	31/86 (36)

Note: The numerator for adults was the number of participants with *S. aureus* isolated from the nares, the oropharynx, or both. The numerator for minors was the number of participants with *S. aureus* isolated from the nares. The denominator is the total number of participants by the county for adults and minors.

MSSA, methicillin-susceptible *S. aureus*.

MRSA, methicillin-resistant *S. aureus*.

(54.7%) participants were female; three (two adults, one minor) participants did not indicate gender. Most participants considered themselves White (92.7% of adults, 89.5% of minors), with 1.7% of adults and 5.8% of minors considering themselves Black/African American and 5.6% of adults and 4.7% of minors indicating 'other' (American Indian/Alaska native, Asian, Hispanic or Latino, or Native Hawaiian or other Pacific Islander) as their race. Gender and race did not differ significantly by the county for adults and the distributions of age, gender and race did not differ significantly for minors. Additional demographic characteristics are provided in Table S1.

*S. aureus* was detected on 147 (33.4%) of the 440 swabs collected. Of the adult participants, 11 (6.2%) carried *S. aureus* only in the nares, 33 (18.6%) only in the oropharynx and 35 (19.8%) in both sites; across both sites, the prevalence of carriage among adults was 44.6% (Table 1). Minors provided nares samples only and 36.1% carried *S. aureus*. The prevalence of nasal carriage in adults was 23.1% in the urban county and 27.9% in the rural county; for minors, it was 40.8% in the urban county and 29.7% in the rural county. Oropharyngeal carriage prevalence was 47.3% and 27.9% in the urban and rural county, respectively. Overall, the sensitivity of nares cultures was 58.2% (46/79) and oropharyngeal cultures were 86.1% (68/79) (Table 2). In the urban county, oropharynx cultures proved more sensitive than nares cultures, but cultures of both sites were equally sensitive in the rural county.

Six environmental sites that were most likely to be contacted by all members of the household in each home were screened for contamination (Fig. 1) and *S. aureus* was not isolated from any of these sites in the majority (65/95, 68.4%) of households; 13 of 95 (13.7%) households had a single positive site. The most frequent positive sites were the primary TV remote (16/95, 16.8%) and the refrigerator handle (14/95, 14.7%) and at least one of the six sampled sites in each household was found positive at least once in both counties. MRSA was isolated from three (3/46, 6.5%) rural households (two houses with two positive sites and one house with a single positive site), but MRSA was not recovered from the environment in urban households.

After adjusting for age, there was a significant positive relationship between *S. aureus* colonisation among adults and the number of positive environmental sites in the participants' homes

**Table 2.** Sensitivity of screening the nares and the oropharynx to identify adult individuals who are colonised with *S. aureus*

	Urban county (n = 46)	Rural county (n = 33)	Total (n = 79)
Nares	21/46 (45%)	25/33 (75%)	46/79 (58%)
Oropharynx	43/46 (93%)	25/33 (75%)	68/79 (86%)

Note: The denominator is the total number of adults colonised with *S. aureus* in their nares, their oropharynx, or both. The numerator is the number of adults identified by culture screening of the specific anatomical site.

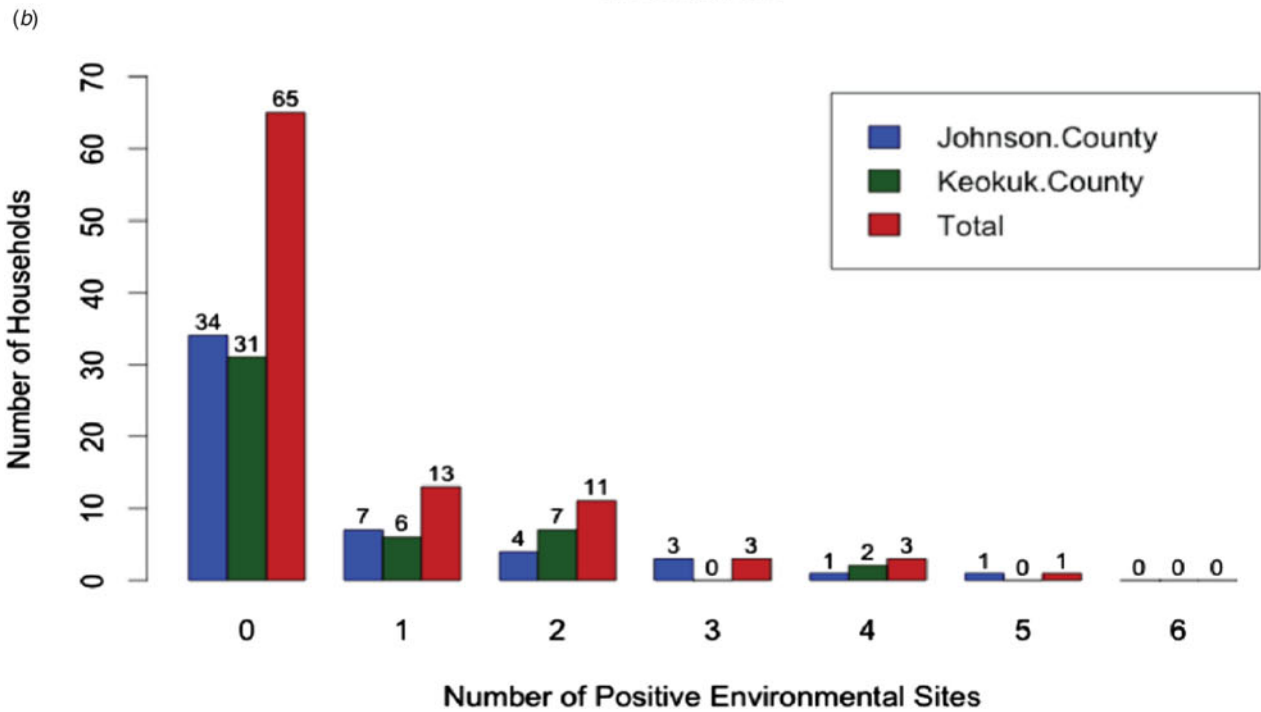
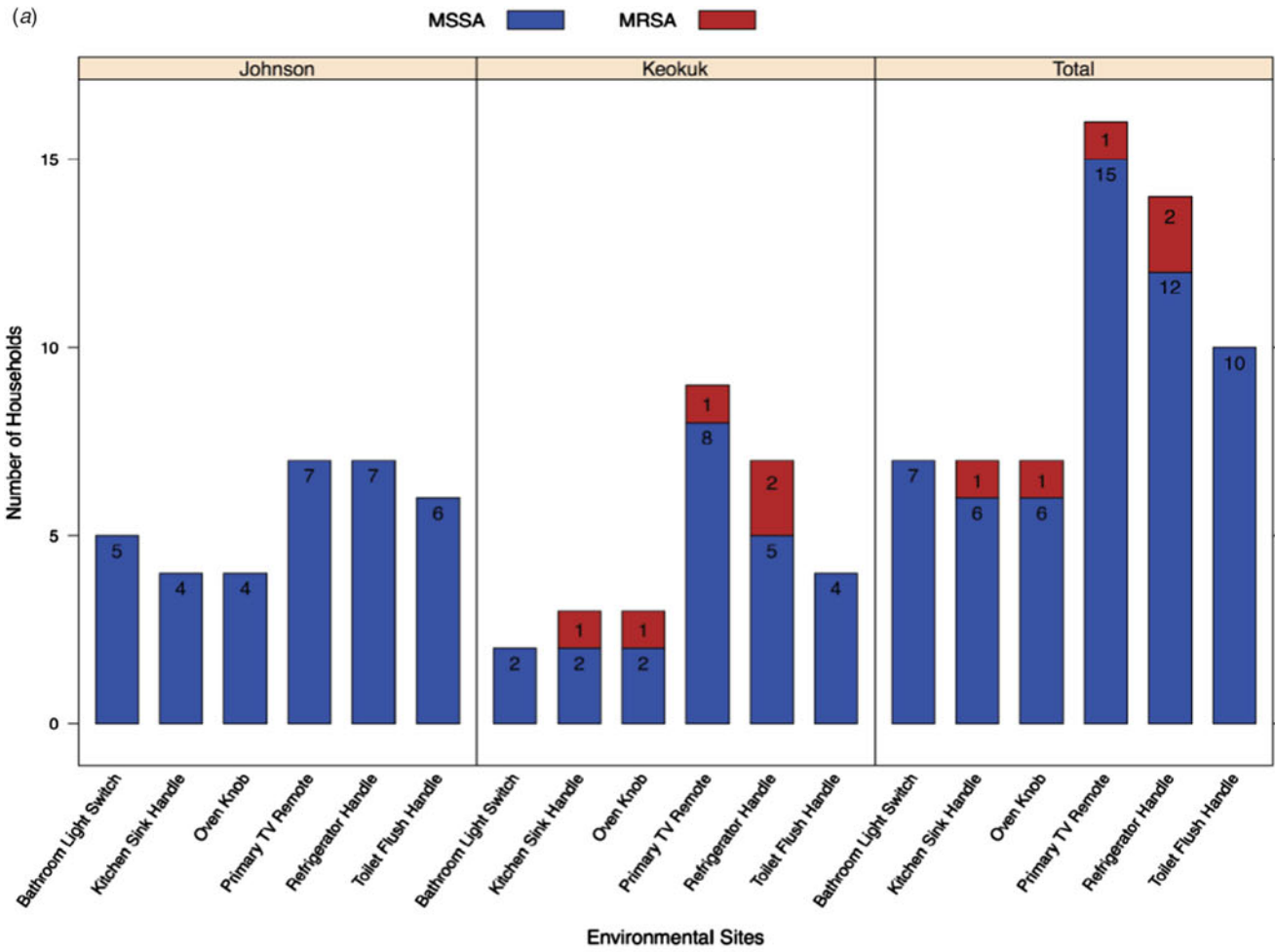
(Table 3). The largest PR for the number of positive environmental sites was observed for participants living in homes with one positive environmental site compared with participants in homes with no positive environmental sites (PR: 1.34, CI: 1.07–1.66,  $P = 0.0095$ ). The PRs decreased, but remained significant, for all other comparisons. Borderline positive associations of *S. aureus* colonisation were evident with race (PR: 1.64, CI: 0.98–2.74,  $P = 0.062$ ), having a family member hospitalised in the past 3 months (PR: 1.82, CI: 0.96–3.47,  $P = 0.069$ ) and having a heart condition (PR: 1.61, CI: 0.96–2.71,  $P = 0.07$ ); likewise a borderline negative relationship of colonisation was found with a family member having a skin or soft tissue infection (PR: 0.36, CI: 0.11–1.18,  $P = 0.09$ ). After adjustment for within-family colonisation, a significant positive relationship was observed between *S. aureus* colonisation and female and male minors with asthma, the number of children in a household and the number of positive environmental sites (Table 3). Other factors not reaching statistical significance are included in Tables S1 and S2.

Of the 147 *S. aureus* isolates, there were 57 unique *spa* types, the most common being t002 ( $n = 21$ ), t008 ( $n = 21$ ), t034 ( $n = 11$ ) and t216 ( $n = 10$ ). After adjusting, the number of unique isolates was reduced to 98 with t002 ( $n = 11$ ), t008 ( $n = 8$ ) and t216 ( $n = 8$ ) the most prevalent. Six clusters of *spa* types were identified among the isolates from the urban county compared with four clusters among rural (Fig. 2), indicating there is a large diversity of circulating *spa* types in both locations. BURP analysis identified 28 *spa* types with a genetic cost greater than four from any clustered *spa* type, indicating these *spa* types were not likely related to any cluster and thus were excluded from Figure 2 [22]. Also, two *spa* types were excluded as they had fewer than five repeat sequences. The genetic relatedness of all *spa* types by county are shown using a minimum spanning tree (Fig. S1), where the genetic distance between isolates is represented by the thickness of connecting lines and the proportion of isolates for each *spa* type is represented by circle size. There were no observable differences between the two counties.

Ten (11.6%) and two (3.3%) isolates from the urban and rural counties, respectively, carried the *mecA* gene (Table 4) and after adjustment for within-family colonisation, this was reduced to seven isolates (12.5%) from the urban county and one (2.4%) from the rural county (Fig. S1b). The PVL gene was not identified in urban isolates but was present in seven (11.5%) rural county isolates. After adjustment for within-family colonization, five (11.9%) isolates from the rural county had the PVL gene.

## Discussion

The overall prevalence of *S. aureus* colonisation was higher (44.1%) than most prior community-based studies [9] and of



**Fig. 1.** Prevalence of *S. aureus* environmental contamination. (A) Prevalence at six sites in participant households stratified by county and presence of the *mecA* gene, which is indicative of methicillin-resistant *S. aureus*. (B) Total number of environmental sites contaminated by *S. aureus* for each household by county.

**Table 3.** Bivariable analysis assessing the association between colonisation with *S. aureus* in the nares and/or oropharynx and participant demographics and risk factors

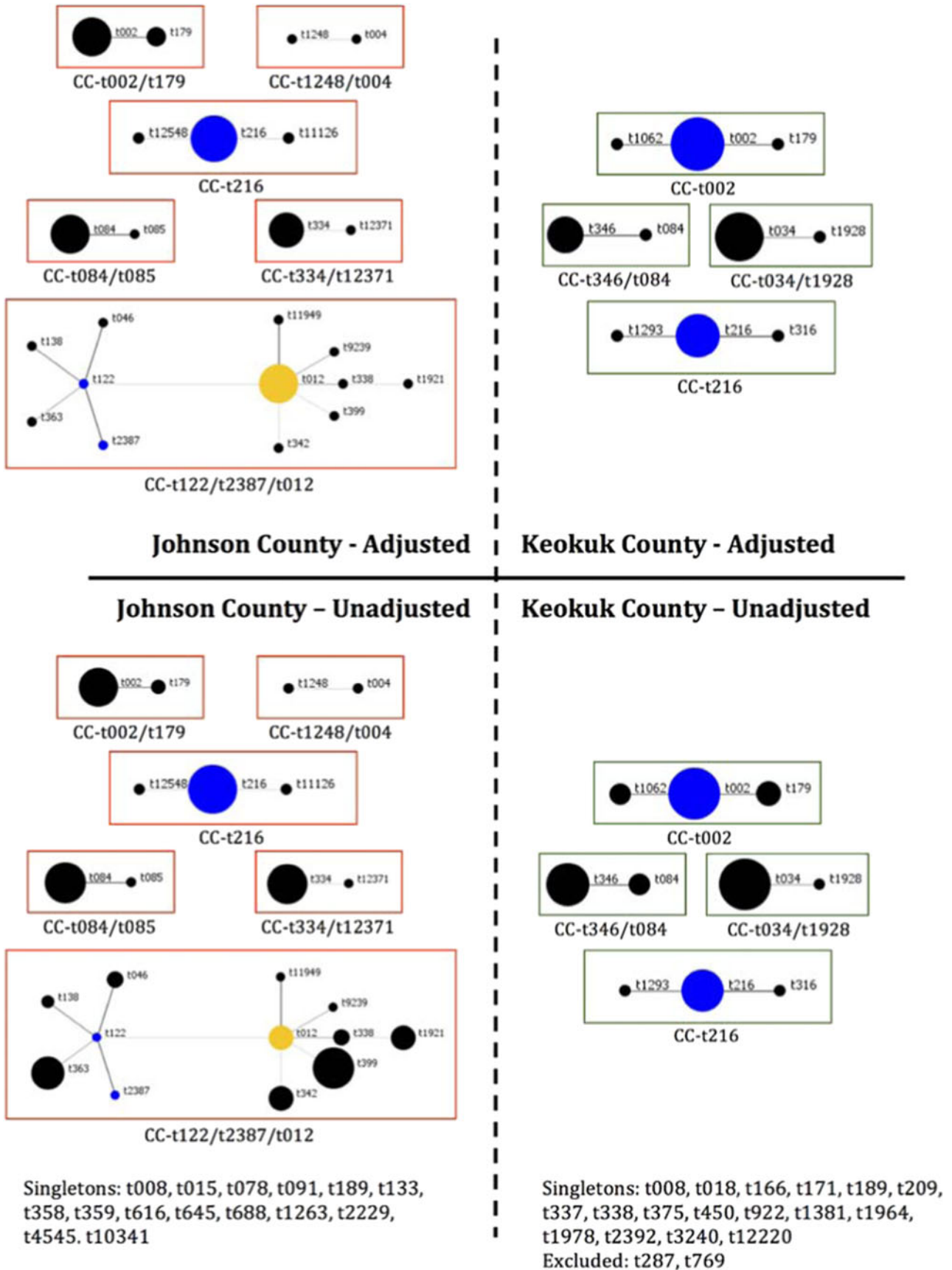
Risk factor	Number positive (%)	Total (N)	PR	95% CI	P-value
<b>Adults (n = 174)</b>					
Age	—	177	0.98	0.97–1.002	0.082
<b>Number of <i>S. aureus</i> positive environmental sites in the home</b>					
Zero	45 (36.8)	122	-ref-	-ref-	-ref-
One	11 (47.8)	23	1.34	1.07–1.66	0.009
Two	12 (66.7)	18	1.26	1.10–1.43	<0.001
Three	4 (80.0)	5	1.18	1.11–1.26	<0.001
Four	3 (75.0)	4	1.12	1.09–1.16	<0.001
Five	1 (50.0)	2	1.08	1.03–1.13	<0.001
<b>Minors (n = 83)</b>					
<b>Number of Children</b>					
One	0 (0)	1	-ref-	-ref-	-ref-
Two	3 (15)	19	1.68	0.83–3.41	0.150
Three	13 (35)	37	1.54	0.90–2.64	0.113
Four	13 (59)	22	1.39	1.01–1.91	0.041
Five	0 (0)	4	1.25	1.07–1.46	0.004
<b>Number of <i>S. aureus</i> positive environmental sites in the home</b>					
Zero	12 (22)	53	-ref-	-ref-	-ref-
One	4 (44)	9	1.68	1.07–2.64	0.025
Two	4 (57)	7	1.53	1.08–2.18	0.018
Three	2 (50)	4	1.38	1.10–1.72	0.005
Four	6 (85)	7	1.24	1.09–1.41	<0.001
Five	2 (66)	3	1.14	1.04–1.25	0.006
<b>Asthma</b>					
No	21 (30)	70	-ref-	-ref-	-ref-
Yes	8 (66)	12	2.18	1.15–4.15	0.017
NA	1 (100)	1	NA	NA	NA

PR, prevalence ratio.

For adults, PRs were adjusted for age and estimated at age = 43. For minors, PRs were adjusted for the age, gender and age by gender interaction. Estimates for PR are calculated at the values of gender = Female and age = 10. For all discrete numeric variables, PR estimates are calculated as each discrete value over the previous discrete value (i.e. Prevalence ratio for number of positive environmental sites = 2 was calculated as prevalence given positive environmental sites = 2/ prevalence given positive environmental sites = 1). For dichotomous variables, PR estimates are estimated for prevalence given yes over prevalence given no.

hospitalised patients [7, 8], whereas, the nasal carriage rate (25.4%) was similar to that reported by others [1, 7–9]. Our higher overall carriage rate is likely due to the addition of oropharyngeal swabs as carriage at this site was markedly more frequent than the nares in adults (37.9% and 25.4%, respectively). This observation supports the statement by Mertz *et al.*, that 'throat carriage may indeed be more common among healthy individuals than among individuals who are exposed to the health care system' [16]. Moreover, our results corroborate those of Hamdan-Partida *et al.* [15] who found 46.5% of health workers in a Mexican community had *S. aureus* oropharyngeal carriage while 37.1% were nasal carriers [15]; these prevalences compare favourably with our finding of 47.3% and 29.3% for nasopharyngeal and nasal carriage, respectively. The difference in nasal carriage between the studies is possibly due to their inclusion of a greater proportion of study participants being minors [15],

which generally have higher *S. aureus* carriage rates [24] compared with working-age adults [9], as well as an urban population. The similarity to the urban county – and not the rural county – may be due to differences in population density, family size and environmental exposures between the two counties and is an association worthy of further study to elucidate this complex relationship. Two other studies have also found lower colonisation prevalence among persons in the community with reported rates for oropharyngeal carriage of 17.4% [13] and 10.8% [14] and 17.5% and 21.2% for nasal carriage [13, 14]. Of note, the estimates of oropharyngeal colonisation among persons in the community provided by our study and these other studies are equal to or greater than the colonisation prevalences of 5.8% to 30% frequently observed in healthcare settings [25–29]. Additionally, the positive association between *S. aureus* colonisation and prevalence or exacerbation of asthma in our study is consistent with a



**Fig. 2.** BURP analysis of *S. aureus spa* typing by county. Unadjusted proportions represent all 147 total isolates; adjusted proportions control for familial clustering of clonal isolates. Each circle represents a single *spa* type and size of the circle is proportionate to the relative number of isolates of that *spa* type. Blue circles indicate the putative founder, yellow circles are secondary putative founders.

**Table 4.** Molecular characteristics of *S. aureus* isolates from participants

	Unadjusted <i>mecA</i> (%)	Adjusted <i>mecA</i> (%)	Unadjusted PVL (%)	Adjusted PVL (%)
Urban county	10/86 (11)	7/56 (12.5)	0/86 (0)	0/56 (0)
Rural county	2/61 (3)	1/42 (2)	7/61 (11)	5/42 (11)
Total	12/147 (8)	8/98 (8)	7/147 (4.8)	5/98 (5)

Note: Unadjusted values include all *S. aureus* isolates from participants broken down by county. Adjusted values include only a single copy of isolates with the same molecular profile (same *spa* type and presence/absence of *mecA* and PVL) to account for familial clustering and the presence of clonal isolates in the nares and oropharynx of adult participants. PVL, Panton-Valentine leukocidin.

number of recent publications [30–32] and warrants follow up to further interrogate this potential risk factor and elucidate the mechanism for asthma development in the presence of *S. aureus* colonisation.

PVL prevalence was low (5.1%) after adjusting for within-family colonisation. This differs markedly from Wardyn *et al.* [13] who reported a PVL prevalence of 31% among *S. aureus* isolates colonising rural Iowans. The latter adjusted their estimates if a participant was colonised in both the nares and the oropharynx, but did not account for strains shared by family members, as was addressed in the current study. In contrast to 11.9% of isolates from the rural county that was PVL positive, none were found in the urban county. Similar to the population studied by Wardyn *et al.* [13], Keokuk County is rural, but our adjusted prevalence was still substantially lower than reported by them.

Oropharyngeal cultures identified a substantially higher percentage of *S. aureus* carriers than nasal cultures (86.1% vs. 58.2%). This may help explain why Bradley [33] found greater than 40% of decolonised persons who were treated with intranasal antimicrobials became recolonised with their initial strains [34]. Other investigators have found the oropharynx to be difficult to decolonise with topical antimicrobials applied directly to the oropharynx [33] or with the indirect intranasal antimicrobial application [35]. This high recolonisation rate and the importance of the oropharynx as a colonization site in healthy persons suggest that investigators evaluating the efficacy of decolonisation protocols should assess recolonisation rates of both the nares and oropharynx.

Three of the 109 (2.8%) colonised persons, each from different families, harboured a strain of *spa* type t034, which has been associated with livestock exposure, particularly swine [36]. All four participants were from the rural county, two were actively farming and one had previously farmed and had an actively farming family member; the fourth individual had no discernible livestock exposure.

The two households with MRSA environmental contamination had at least one family member colonised with an isolate of the same *spa* type but lacking the *mecA* gene. This finding is surprising as it suggests the *mecA* gene could be lost when an isolate moves from the environment to humans [37–39]. Alternate hypotheses are: these isolates are not truly clonal and have the same *spa* type by chance, or the strain acquired *mecA* in the environment following human shed. Extended storage at –20 °C is unlikely to cause loss of the *mecA* gene [40] as samples from humans and the environment were stored together and the number of freeze-thaw cycles did not differ.

Environmental contamination has been postulated to be an important mode of *S. aureus* transmission, albeit less important than direct person-to-person transmission. Importantly, Alam *et al.*, found the household to be a hotspot for transmission of MRSA isolates causing infections but did not discuss the possibility

of environmental contamination as a fomite [41], thus we evaluated environmental contamination to gain insights into the role the environment plays in colonisation. In our population, having at least one positive environmental site had the strongest association with colonisation for both adults and minors, indicating it may play a greater role in transmission than previously thought. Our study did not elucidate the direction of transmission (i.e. environment to person or person to environment) or whether there is a dose-response of increased environmental contamination associated with increased colonisation prevalence, due to the cross-sectional nature of this study and the small number of individuals in houses with greater than one contaminated environmental site, respectively. A contaminated environment may also be a proxy for other risk factors, such as hygiene standards, that we did not assess directly. Additional research is needed to further characterise this association to identify which sites within a household are most commonly contaminated and/or associated with colonisation. Further research is also needed to assess whether fomites, aerosolisation, or settled dust aid the transmission of *S. aureus* in homes [42].

A potential limitation of this study is the use of different recruitment approaches for each county. It is possible these strategies led to selection bias, however, as individuals are unlikely to know if they are colonised with *S. aureus* it is unlikely that such differences had any impact on an individual's decision to enroll in the study. Additionally, participants were asked if anyone in their household had a skin and soft tissue infection or *S. aureus* or MRSA infection in the past 3 months. The proportion of individuals responding yes was not statistically different between the two counties, reducing the possibility that participants were motivated by *S. aureus* colonization status or knowledge.

In conclusion, *S. aureus* was isolated from both the nares and oropharynx of healthy community members, with the oropharynx being the more common site of colonisation. We observed a higher prevalence of colonisation than previously reported and postulate that this was due to the addition of oropharyngeal swabs. Environmental contamination was the factor most strongly associated with *S. aureus* colonisation. Previous studies of *S. aureus* colonisation have focused on patients in healthcare settings or on other high-risk groups and thus may not be applicable to community members. Our findings have implications for efforts to decrease community-acquired *S. aureus* infections and, thus, warrant additional studies.

**Supplementary material.** The supplementary material for this article can be found at <https://doi.org/10.1017/S0950268818001644>

**Acknowledgements.** The authors would like to thank Elizabeth Chrischilles and Kelley Donham for their invaluable guidance in the analysis and preparation of this manuscript. This project was supported by AFRI food safety grant no. #2011-67005-30337 from the USDA National Institute of Food and Agriculture (TCS).

## References

1. **Corwitz RJ et al.** (2008) Changes in the prevalence of nasal colonization with *Staphylococcus aureus* in the United States, 2001–2004. *The Journal of Infectious Diseases* **197**, 1226–1234.
2. **Kluytmans J, van Belkum A and Verbrugh H** (1997) Nasal carriage of *Staphylococcus aureus*: epidemiology, underlying mechanisms, and associated risks. *Clinical Microbiology Reviews* **10**, 505–520.
3. **Nouwen JL et al.** (2004) Predicting the *Staphylococcus aureus* nasal carrier state: derivation and validation of a “culture rule”. *Clinical Infectious Diseases: An Official Publication of the Infectious Diseases Society of America* **39**, 806–811.
4. **Wertheim HF et al.** (2005) The role of nasal carriage in *Staphylococcus aureus* infections. *The Lancet infectious diseases* **5**, 751–762.
5. **Centers for Disease Control and Prevention** (2014) Active Bacterial Core Surveillance Report, Emerging Infections Program Network, Methicillin-Resistant *Staphylococcus aureus*, 2014. In, <http://www.cdc.gov/abcs/reports-findings/survreports/mrsa12.pdf> (Accessed 1 March 2016).
6. **Malani PN** (2014) National burden of invasive methicillin-resistant *Staphylococcus aureus* infection. *JAMA: The Journal of the American Medical Association* **311**, 1438–1439.
7. **Lipsky BA et al.** (1987) Factors affecting staphylococcal colonization among NIDDM outpatients. *Diabetes Care* **10**, 483–486.
8. **Lu PL et al.** (2008) Methicillin-resistant *Staphylococcus aureus* carriage, infection and transmission in dialysis patients, healthcare workers and their family members. *Nephrology, Dialysis, Transplantation: Official Publication of the European Dialysis and Transplant Association - European Renal Association* **23**, 1659–1665.
9. **Malik S et al.** (2009) Prevalence of community-associated methicillin-resistant *Staphylococcus aureus* colonization outside the healthcare environment. *Epidemiology and Infection* **137**, 1237–1241.
10. **Polgreen PM et al.** (2006) Epidemiology of methicillin-resistant *Staphylococcus aureus* and vancomycin-resistant *Enterococcus* in a rural state. *Infection Control and Hospital Epidemiology: The Official Journal of the Society of Hospital Epidemiologists of America* **27**, 252–256.
11. **Bureau of US Census** (2010) 2010 Census Urban and Rural Classification and Urban Area Criteria. In, <https://www.census.gov/geo/reference/ua/urban-rural-2010.html> (Accessed 9 June 2016).
12. **Miller LG et al.** (2012) *Staphylococcus aureus* colonization among household contacts of patients with skin infections: risk factors, strain discordance, and complex ecology. *Clinical Infectious Diseases: An Official Publication of the Infectious Diseases Society of America* **54**, 1523–1535.
13. **Wardyn SE, Forshey BM and Smith TC** (2012) High prevalence of Pantone-Valentine leukocidin among methicillin-sensitive *Staphylococcus aureus* colonization isolates in rural Iowa. *Microbial Drug Resistance (Larchmont, NY)* **18**, 427–433.
14. **Smith TC, et al.** (2012) Molecular and epidemiologic predictors of *Staphylococcus aureus* colonization site in a population with limited nosocomial exposure. *American Journal of Infection Control* **40**, 992–996.
15. **Hamdan-Partida A, Sainz-Espunes T and Bustos-Martinez J** (2010) Characterization and persistence of *Staphylococcus aureus* strains isolated from the anterior nares and throats of healthy carriers in a Mexican community. *Journal of Clinical Microbiology* **48**, 1701–1705.
16. **Mertz D et al.** (2007) Throat swabs are necessary to reliably detect carriers of *Staphylococcus aureus*. *Clinical Infectious Diseases: An Official Publication of the Infectious Diseases Society of America* **45**, 475–477.
17. **Stromquist AM et al.** (1997) The Keokuk County rural health study. *Journal of Agromedicine* **4**, 243–248.
18. **Louie L et al.** (2002) Rapid detection of methicillin-resistant staphylococci from blood culture bottles by using a multiplex PCR assay. *Journal of Clinical Microbiology* **40**, 2786–2790.
19. **Lina G et al.** (1999) Involvement of Pantone-Valentine leukocidin-producing *Staphylococcus aureus* in primary skin infections and pneumonia. *Clinical Infectious Diseases: An Official Publication of the Infectious Diseases Society of America* **29**, 1128–1132.
20. **Shopsin B et al.** (1999) Evaluation of protein A gene polymorphic region DNA sequencing for typing of *Staphylococcus aureus* strains. *Journal of Clinical Microbiology* **37**, 3556–3563.
21. **Baum C et al.** (2009) Non-spa-typeable clinical *Staphylococcus aureus* strains are naturally occurring protein A mutants. *Journal of Clinical Microbiology* **47**, 3624–3629.
22. **Mellmann A et al.** (2007) Based Upon Repeat Pattern (BURP): an algorithm to characterize the long-term evolution of *Staphylococcus aureus* populations based on spa polymorphisms. *BMC Microbiology* **7**, 98.
23. **Santos CA et al.** (2008) Estimating adjusted prevalence ratio in clustered cross-sectional epidemiological data. *BMC Medical Research Methodology* **8**, 80.
24. **Bogaert D et al.** (2004) Colonisation by *Streptococcus pneumoniae* and *Staphylococcus aureus* in healthy children. *Lancet* **363**, 1871–1872.
25. **Biguardi GE and Lowes S** (2009) MRSA screening: throat swabs are better than nose swabs. *The Journal of Hospital Infection* **71**, 373–374.
26. **Bitterman Y et al.** (2010) Characterization of the best anatomical sites in screening for methicillin-resistant *Staphylococcus aureus* colonization. *European Journal of Clinical Microbiology & Infectious Diseases: Official Publication of the European Society of Clinical Microbiology* **29**, 391–397.
27. **Collins J et al.** (2011) Review of a three-year methicillin-resistant *Staphylococcus aureus* screening programme. *The Journal of Hospital Infection* **78**, 81–85.
28. **Harbarth S et al.** (2007) Is throat screening necessary to detect methicillin-resistant *Staphylococcus aureus* colonization in patients upon admission to an intensive care unit? *Journal of Clinical Microbiology* **45**, 1072–1073.
29. **Marshall C and Spelman D** (2007) Re: is throat screening necessary to detect methicillin-resistant *Staphylococcus aureus* colonization in patients upon admission to an intensive care unit? *Journal of Clinical Microbiology* **45**, 3855.
30. **Ludwig S et al.** (2017) Analysis of home dust for *Staphylococcus aureus* and staphylococcal enterotoxin genes using quantitative PCR. *The Science of the Total Environment* **581–582**, 750–755.
31. **Davis MF et al.** (2015) *Staphylococcus aureus* colonization is associated with wheeze and asthma among US children and young adults. *The Journal of Allergy and Clinical Immunology* **135**, 811–813.e815.
32. **Davis MF et al.** (2018) Effect of home exposure to *Staphylococcus aureus* on asthma in adolescents. *The Journal of allergy and clinical immunology*; **141**, 402–405.e410.
33. **Buehlmann M et al.** (2008) Highly effective regimen for decolonization of methicillin-resistant *Staphylococcus aureus* carriers. *Infection Control and Hospital Epidemiology: The Official Journal of the Society of Hospital Epidemiologists of America* **29**, 510–516.
34. **Bradley SF** (2007) Eradication or decolonization of methicillin-resistant *Staphylococcus aureus* carriage: what are we doing and why are we doing it? *Clinical Infectious Diseases* **44**, 186–189.
35. **Wertheim HF et al.** (2005) Effect of mupirocin treatment on nasal, pharyngeal, and perineal carriage of *Staphylococcus aureus* in healthy adults. *Antimicrobial Agents and Chemotherapy* **49**, 1465–1467.
36. **Smith TC et al.** (2009) Methicillin-resistant *Staphylococcus aureus* (MRSA) strain ST398 is present in midwestern U.S. swine and swine workers. *PLoS ONE* **4**, e4258.
37. **Lawrence C et al.** (1996) Consecutive isolation of homologous strains of methicillin-resistant and methicillin-susceptible *Staphylococcus aureus* from a hospitalized child. *The Journal of Hospital Infection* **33**, 49–53.
38. **Inglis B, el-Adhami W and Stewart PR** (1993) Methicillin-sensitive and -resistant homologues of *Staphylococcus aureus* occur together among clinical isolates. *The Journal of Infectious Diseases* **167**, 323–328.
39. **Wagenvoort JH et al.** (2000) Hospital outbreak of methicillin-resistant *Staphylococcus aureus* followed by an in vivo change to a mecA-negative mutant with loss of epidemicity. *European Journal of Clinical Microbiology & Infectious Diseases: Official Publication of the European Society of Clinical Microbiology* **19**, 976–977.
40. **van Griethuysen A et al.** (2005) Loss of the mecA gene during storage of methicillin-resistant *Staphylococcus aureus* strains. *Journal of Clinical Microbiology* **43**, 1361–1365.
41. **Alam MT et al.** (2015) Transmission and microevolution of USA300 MRSA in U.S. households: evidence from whole-genome sequencing. *MBio* **6**, e00054.
42. **Davis MF, et al.** (2012) Household transmission of methicillin-resistant *Staphylococcus aureus* and other staphylococci. *The Lancet Infectious Diseases* **12**, 703–716.