

RESEARCH ARTICLE

Open Access



1,25(OH)₂D₃ and dexamethasone additively suppress synovial fibroblast activation by CCR6⁺ T helper memory cells and enhance the effect of tumor necrosis factor alpha blockade

Wendy Dankers^{1,2}, Claudia González-Leal^{1,2}, Nadine Davelaar^{1,2}, Patrick S. Asmawidjaja^{1,2}, Adriana M. C. Mus^{1,2}, Johanna M. W. Hazes¹, Edgar M. Colin³ and Erik Lubberts^{1,2,4*} 

Abstract

Background: Despite recent improvements in the treatment of rheumatoid arthritis (RA), an insufficient treatment response and the development of treatment resistance in many patients illustrates the need for new therapeutic strategies. Chronic synovial inflammation could be suppressed by targeting RA synovial fibroblast (RASf) activation by, for example, interleukin (IL)-17A-producing CCR6⁺ T helper memory (memTh) cells. Here, we modulated this interaction by combining the active vitamin D metabolite 1,25(OH)₂D₃ with dexamethasone (DEX) and explored the potential therapeutic applications.

Methods: CCR6⁺ memTh cells from peripheral blood mononuclear cells (PBMCs) of healthy donors or treatment-naïve early RA patients were cultured alone or with RASf from established RA patients for 3 days and treated with or without 1,25(OH)₂D₃, DEX, or etanercept. Treatment effects were assessed using enzyme-linked immunosorbent assay (ELISA) and flow cytometry.

Results: 1,25(OH)₂D₃, and to lesser extent DEX, reduced production of the pro-inflammatory cytokines IL-17A, IL-22, and interferon (IFN)γ in CCR6⁺ memTh cells. Tumor necrosis factor (TNF)α was only inhibited by the combination of 1,25(OH)₂D₃ and DEX. In contrast, DEX was the strongest inhibitor of IL-6, IL-8, and tissue-destructive enzymes in RASf. As a result, 1,25(OH)₂D₃ and DEX additively inhibited inflammatory mediators in CCR6⁺ memTh-RASf cocultures. Interestingly, low doses of mainly DEX, but also 1,25(OH)₂D₃, combined with etanercept better suppressed synovial inflammation in this coculture model compared with etanercept alone.

Conclusion: This study suggests that 1,25(OH)₂D₃ and DEX additively inhibit synovial inflammation through targeting predominantly CCR6⁺ memTh cells and RASf, respectively. Furthermore, low doses of DEX and 1,25(OH)₂D₃ enhance the effect of TNFα blockade in inhibiting RASf activation, thus providing a basis to improve RA treatment.

Keywords: Rheumatoid arthritis, Th17, Vitamin D, Dexamethasone, CCR6

* Correspondence: E.Lubberts@erasmusmc.nl

¹Department of Rheumatology, Erasmus MC, Rotterdam, the Netherlands

²Department of Immunology, Erasmus MC, Rotterdam, the Netherlands

Full list of author information is available at the end of the article



Background

Rheumatoid arthritis (RA) is a chronic inflammatory autoimmune disease characterized by inflamed synovial joints resulting in pain, fatigue, and disability in patients. Although treatment has improved over the last decades, many patients do not reach clinical remission, show progressive joint damage, or become resistant to their treatment [1]. Furthermore, the current therapies include the use of expensive biological disease-modifying antirheumatic drugs (DMARDs) which pose a burden on the healthcare budget. Therefore, there is still a need to find new therapeutic options and to improve currently available treatments.

The main therapeutic goal in RA is to stop the chronic synovial inflammation and thereby prevent the subsequent cartilage and bone damage in the affected joint. Synovial fibroblasts play an important role in this process since they can secrete proinflammatory cytokines that attract and activate immune cells, produce tissue-destructive enzymes, and invade cartilage [2, 3]. How these RA synovial fibroblasts (RASF) are activated is currently unknown, although one of the hypotheses is that they are activated by infiltrating immune cells. Previously we have shown that CCR6⁺, but not CCR6⁻, memory T helper (memTh) cells can activate RASF [4].

CCR6⁺ memTh cells are characterized by interleukin (IL)-17A production and RAR-related orphan C receptor (RORC) expression. This subset contains the classic Th17 cells, but also contains, for example, Th17.1 cells that produce high levels of interferon (IFN) γ [5]. Other evidence that suggests a role for these IL-17A-producing memTh cells is that Th17 cells and IL-17-mediated signaling are required for the development of murine autoimmune arthritis [6, 7]. Furthermore, CCR6⁺ memTh cells are more activated and more prevalent in the blood of treatment-naive early RA patients and are also found in the synovial fluid of RA patients [4, 8].

Upon interaction with CCR6⁺ memTh cells, RASF secrete proinflammatory mediators such as IL-6, matrix metalloproteases (MMPs), and prostaglandin E2 (PGE2) via IL-17A and tumor necrosis factor (TNF) α . In turn, these molecules, especially PGE2, further activate the CCR6⁺ memTh cells to produce more IL-17A, thereby creating a proinflammatory feedback loop that could drive the chronic synovial inflammation [4, 9]. Therefore, inhibiting this proinflammatory loop may be beneficial in the treatment of RA.

We have previously shown that combining the active vitamin D metabolite 1,25(OH) $_2$ D $_3$ with TNF α blockade, a commonly used therapy in RA, additively suppresses the proinflammatory loop between CCR6⁺ memTh and RASF [10]. However, clinical translation of these findings is challenging since high concentrations of 1,25(OH) $_2$ D $_3$ were used. Interestingly, the effects of 1,25(OH) $_2$ D $_3$ on

Th17-related cytokines, such as IL-17A, TNF α , and IL-22, can be augmented through combination with dexamethasone (DEX) [11]. DEX is a synthetic glucocorticoid (GC) which is clinically used for fast resolution of inflammation and is often combined with vitamin D supplements to prevent the osteoporotic side effects of the drug [12].

Given the immunomodulatory capacities of both DEX and 1,25(OH) $_2$ D $_3$, we here investigated whether this combination could suppress CCR6⁺ memTh cells, RASF, and their interaction. Furthermore, the potential use of these findings for improving current anti-TNF α therapy is explored.

Methods

Subjects

Healthy control peripheral blood mononuclear cells (PBMCs) were obtained from buffycoats (Sanquin, Amsterdam, the Netherlands). For validation of findings in healthy PBMCs, RA PBMCs were isolated from treatment-naive RA patients who were embedded in the tREACH study, which was ethically approved by the METC Rotterdam. Relevant clinical information is summarized in Additional file 1 (Table S1). RASF were grown from synovial explants after joint replacement surgery. All patients signed informed consent.

Cell sorting

PBMCs were isolated from peripheral blood using ficoll-based cell separation and frozen in liquid nitrogen until use. For sorting of CCR6⁺ memTh cells (CD4⁺CD45RO⁺CCR6⁺CD25^{low/int}), PBMCs were stained using antibodies against CD4, CCR6, CD25 (BioLegend, San Diego, CA, USA), and CD45RO (BD Biosciences, San Diego, CA, USA). Before sorting CCR6⁺ memTh cells, the cells were prepurified using CD4 microbeads via automated magnetic-activated cell sorting (Miltenyi Biotec, Leiden, The Netherlands). Dead cells were excluded using 4'-6-diamidino-2-phenylindole dilactate (DAPI) and CCR6⁺ memTh cells were sorted on a FACSariaIII sorter (BD Biosciences).

Cell culture

RASF were obtained by culturing small synovial biopsies in a culture flask with Dulbecco's modified Eagle's medium (DMEM; Gibco, Waltham, MA, USA), supplemented with 10% fetal calf serum (FCS; Gibco) and 100 IU/ml penicillin/streptomycin (pen/strep; Lonza, Verviers, Belgium). After RASF were grown out of the synovial biopsies, cells were passaged and used for experiments between passage 3 and 8. For coculture with sorted T cells or stimulation experiments, RASF were plated at a density of 1×10^4 cells/well in a 96-well plate 24 h before the T cells or stimulation medium were

added. Where indicated, RASF were stimulated with 2 ng/ml recombinant TNF α and 5 ng/ml recombinant IL-17A (R&D Systems, Minneapolis, MN, USA).

Sorted CCR6⁺ memTh cells were stimulated with 300 ng/ml soluble anti-CD3 and 400 ng/ml soluble anti-CD28 (Sanquin, Amsterdam, the Netherlands) at a density of 2.5×10^4 cells/ml in Iscove's modified Dulbecco's medium (IMDM; Gibco) supplemented with 10% FCS, 100 IU/ml pen/strep, 2 mM L-glutamine, and 50 μ M β -mercaptoethanol (Sigma-Aldrich, St. Louis, MO, USA). Cells were treated with or without 1,25(OH)₂D₃ (Leo Pharmaceutical Products, Ballerup, Denmark), dexamethasone (Sigma-Aldrich), and etanercept (anti-TNF α , Pfizer, New York, NY, USA) dissolved in 100% ethanol at the indicated concentrations and added for the full duration of the culture simultaneously with the stimulatory compounds. Control conditions contained an equal volume of 100% ethanol which never exceeded 0.1%.

Flow cytometry

Cultured cells were restimulated with 50 ng/ml phorbol 12-myristate 13 acetate (PMA), 500 ng/ml ionomycin (Sigma-Aldrich), and GolgiStop (BD Biosciences) for 4 h. Cells were then stained with Fixable Viability Dye eFluor506 (eBioscience, San Diego, CA, USA), fixated with 2% paraformaldehyde and permeabilized using 0.5% saponine. Intracellular cytokines were stained with monoclonal antibodies against IL-17A, IL-22 (eBioscience), and IFN γ (BioLegend).

Apoptosis was assessed using 7AAD/Annexin V staining, performed according to the manufacturer's instructions (eBioscience). All samples were measured on the FACS-CantoII Flow Cytometer (BD Biosciences).

Enzyme-linked immunosorbent assay (ELISA)

In culture supernatant after 3 days of culture, the concentration of IL-17A, IL-22, IFN γ , TNF α , IL-10, IL-6, IL-8 (Ready-Set-Go, eBioscience), MMP1, MMP3 (DuoSet ELISA, R&D Systems), and PGE2 (Prostaglandin E2 Parameter Assay Kit, R&D Systems) were measured using ELISA. The manufacturers' protocols were followed.

Statistical analysis

Differences between experimental treatment groups were tested using analysis of variance (ANOVA) with Bonferroni post-hoc tests. *p* values below 0.05 were considered statistically significant. Analyses were performed using Prism software version 6.01 (GraphPad Software, La Jolla, CA, USA).

Results

1,25(OH)₂D₃-DEX combination treatment suppresses TNF α production from CCR6⁺ memTh cells

As a first step to examine the potential use of 1,25(OH)₂D₃ and DEX to inhibit synovial inflammation, CCR6⁺ memTh cells were sorted from healthy controls and cultured for 3

days with 1,25(OH)₂D₃, DEX, or both. In line with the previous studies, treatment with 1,25(OH)₂D₃ reduced the percentage of cells producing IL-17A, IL-22, and IFN γ . On the other hand, treatment with DEX did not affect the percentage of IL-22- or IFN γ -producing cells. The percentage of IL-17A-producing cells was reduced by DEX, but significantly less than by 1,25(OH)₂D₃. Combining 1,25(OH)₂D₃ and DEX had a similar effect as 1,25(OH)₂D₃ single treatment (Fig. 1a, b). Notably, treatment with DEX significantly reduced the amount of IL-17A and IFN γ that was produced during the 3-day culture period (Fig. 1c). Since DEX is known to induce cell death, the treatment effect on apoptosis was investigated. However, the minimal increase in apoptosis on DEX or combination exposure could not explain the difference between flow cytometry and ELISA (Additional file 1: Figure S1). Although no additive effect was observed with 1,25(OH)₂D₃-DEX combination treatment on IL-17A, IL-22, or IFN γ , TNF α was significantly inhibited by the combined exposure (Fig. 1c). Since 1,25(OH)₂D₃ can induce an anti-inflammatory phenotype in the CCR6⁺ memTh cells (Dankers et al., submitted manuscript), the combinatory effects of 1,25(OH)₂D₃ and DEX on IL-10 were also assessed. However, DEX did not affect IL-10 production when used alone and reduced the induction of IL-10 by 1,25(OH)₂D₃ when used in combination (Fig. 1c). Overall, these data show that 1,25(OH)₂D₃ is the strongest modulator of IL-17A, IL-22, IFN γ , and IL-10 production by CCR6⁺ memTh cells, but the combination of 1,25(OH)₂D₃ and DEX provides additional value through enhanced TNF α inhibition.

1,25(OH)₂D₃ and DEX additively suppress the proinflammatory feedback loop between CCR6⁺ memTh cells and RASF

Since 1,25(OH)₂D₃ and DEX had additive effects in blocking TNF α and they were both capable of reducing the level of IL-17A that is produced by CCR6⁺ memTh cells, we hypothesized that the combination treatment would augment inhibition of the proinflammatory loop between CCR6⁺ memTh cells and RASF when compared with either compound alone. Similar to the effects of 1,25(OH)₂D₃ and DEX on CCR6⁺ memTh cell cultures, treatment of the CCR6⁺ memTh-RASF cocultures significantly reduced IL-17A, IL-22, and IFN γ production, especially with 1,25(OH)₂D₃. However, the production of TNF α was stimulated upon treatment with DEX, whereas it was still inhibited with the combination treatment. Furthermore, IL-10 was significantly upregulated in response to DEX and the combination of DEX and 1,25(OH)₂D₃, but not 1,25(OH)₂D₃ alone (Fig. 2).

Despite the differences in modulation of T cell-derived cytokines by DEX and 1,25(OH)₂D₃, they equally inhibited the RASF-derived factors IL-6, IL-8, and PGE2. For IL-6 and IL-8 there was also a trend towards additive inhibition

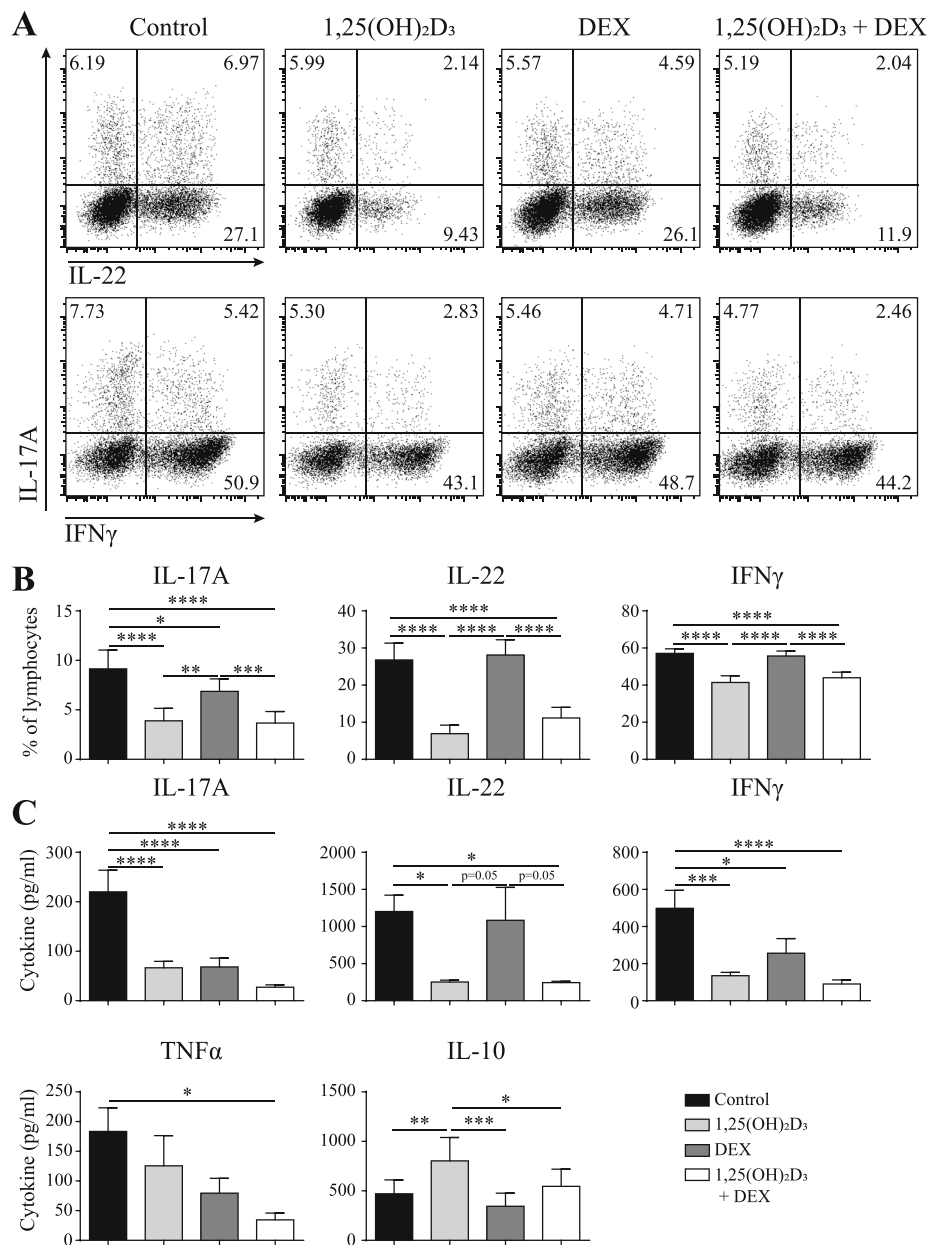


Fig. 1 1,25(OH)₂D₃ and DEX additively suppress proinflammatory cytokines secreted by CCR6⁺ memTh cells. CCR6⁺ memTh cells were sorted from healthy individuals and cultured for 3 days under stimulation with anti-CD3 and anti-CD28, with or without 100 nM 1,25(OH)₂D₃ and 1000 nM dexamethasone (DEX). **a** Representative flow cytometry plots of interleukin (IL)-17A-, IL-22-, and interferon (IFN)γ-producing cells. **b** Quantification of flow cytometry as in **a** for six donors. **c** Cytokine production in the culture medium as measured by ELISA. Data show mean ± SEM for n = 6–10 healthy individuals, representative of at least three independent experiments. *p < 0.05, **p < 0.01, ***p < 0.001, ****p < 0.0001. TNF tumor necrosis factor

in response to the combination of 1,25(OH)₂D₃ and DEX. Interestingly, DEX treatment led to a significantly greater inhibition of the tissue-destructive enzymes MMP1 and MMP3 than 1,25(OH)₂D₃ treatment (Fig. 2). These data suggest that, although no additive effect of 1,25(OH)₂D₃ and DEX is found on individual cytokines, the two compounds cooperate to reduce the proinflammatory milieu at an inflammatory synovial site by each targeting different

players in the inflammation. Furthermore, the increased production of IL-10 potentially mediates anti-inflammatory effects on other immune cells.

DEX is a stronger inhibitor of proinflammatory factors from RASF than 1,25(OH)₂D₃

The finding that DEX is an equal inhibitor of IL-6 and IL-8 and stronger inhibitor of MMP1 and MMP3 than

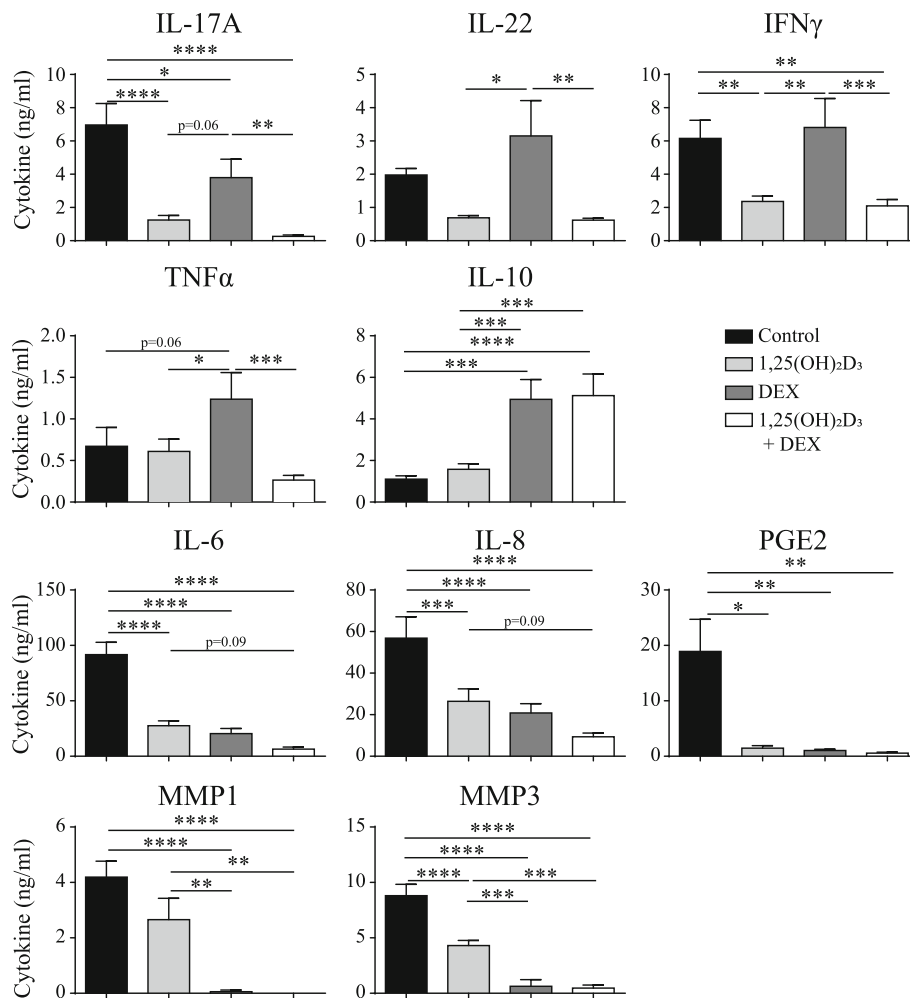


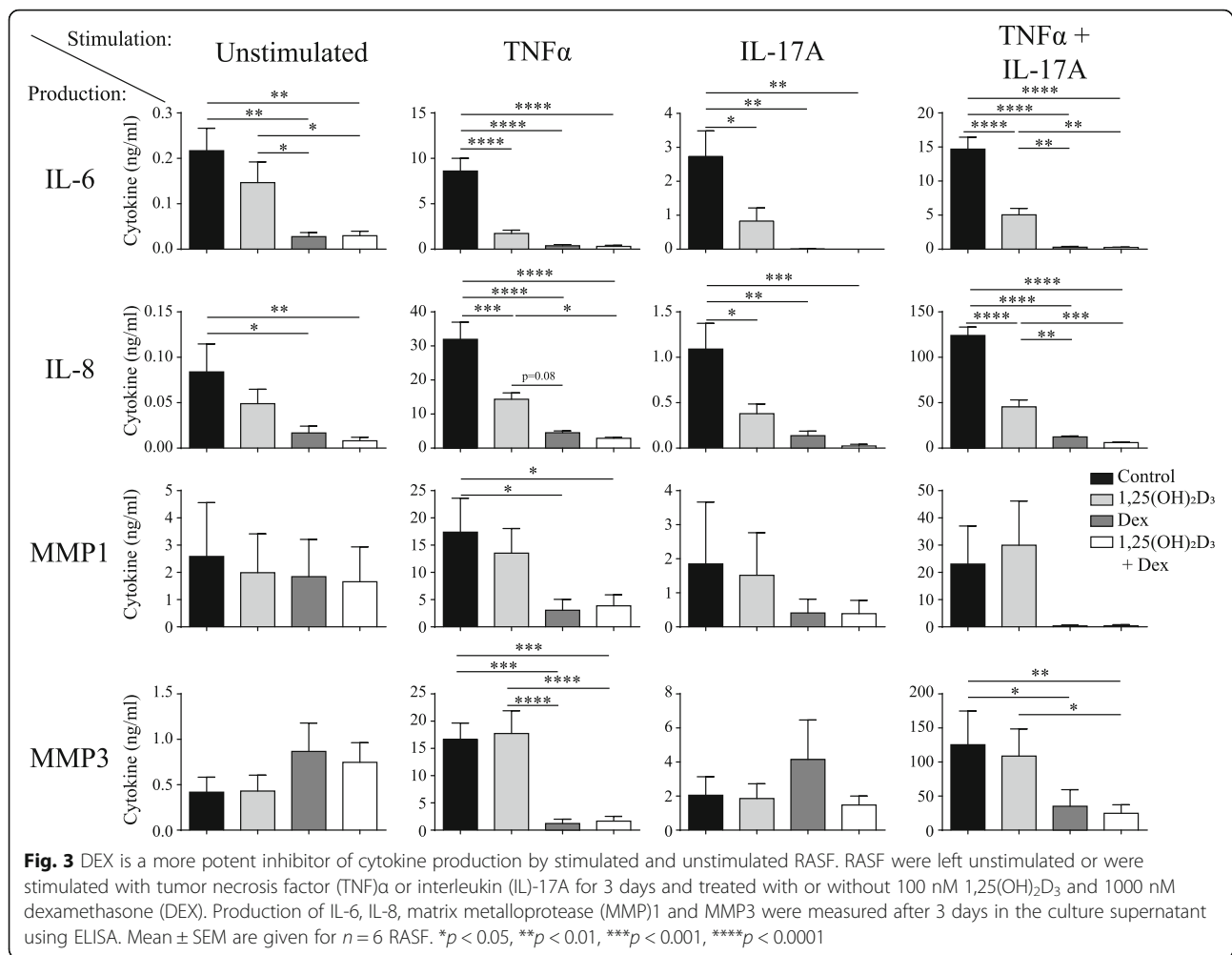
Fig. 2 1,25(OH)₂D₃ and DEX additively suppress the proinflammatory feedback loop between CCR6⁺ memTh cells and RASF. CCR6⁺ memTh sorted from healthy individuals were cultured with RASF for 3 days. The cells were stimulated with anti-CD3 and anti-CD28 and treated with or without 100 nM 1,25(OH)₂D₃ and 1000 nM dexamethasone (DEX). After 3 days, cytokine production was measured in the culture supernatant using ELISA. Mean \pm SEM are given for $n = 10$ healthy donors grown on RASF from two different donors. Data are representative of at least three independent experiments. * $p < 0.05$, ** $p < 0.01$, *** $p < 0.001$, **** $p < 0.0001$. IFN interferon, IL interleukin, MMP matrix metalloprotease, PGE₂ prostaglandin E₂, TNF tumor necrosis factor

1,25(OH)₂D₃ while being less efficient in inhibiting T cell-derived cytokines in the CCR6⁺ memTh-RASF cocultures suggests a direct effect of DEX on RASF. To investigate this, RASF were cultured with or without stimulation of TNF α , IL-17A, or both for 3 days and treated with 1,25(OH)₂D₃, DEX, or a combination (Fig. 3). Without stimulation, 1,25(OH)₂D₃ did not significantly affect cytokine production by RASF, whereas DEX reduced the levels of IL-6 and IL-8. Upon stimulation with TNF α , both 1,25(OH)₂D₃ and DEX inhibited IL-6 and IL-8, whereas MMP1 and MMP3 were only significantly inhibited by DEX or the combination treatment. Similar patterns were observed with stimulation using IL-17A or a combination of IL-17A and TNF α . Together with our previous findings, these data suggest that, although DEX

and 1,25(OH)₂D₃ can affect both T cells and RASF, DEX acts most strongly on RASF whereas the main effect of 1,25(OH)₂D₃ is mediated via the T cells.

Low dose of 1,25(OH)₂D₃ and DEX improves the effects of TNF α blockade in CCR6⁺ memTh-RASF cocultures

Since 1,25(OH)₂D₃ and DEX additively inhibit the proinflammatory loop between CCR6⁺ memTh cells and RASF, we next studied whether the 1,25(OH)₂D₃-DEX combination can enhance the anti-inflammatory effect of TNF α blockade in this model system. To make these experiments more physiologically relevant, we used a dose-testing experiment to determine whether physiologically relevant dosages of 1,25(OH)₂D₃ and DEX still affected cytokine production in the CCR6⁺ memTh-RASF

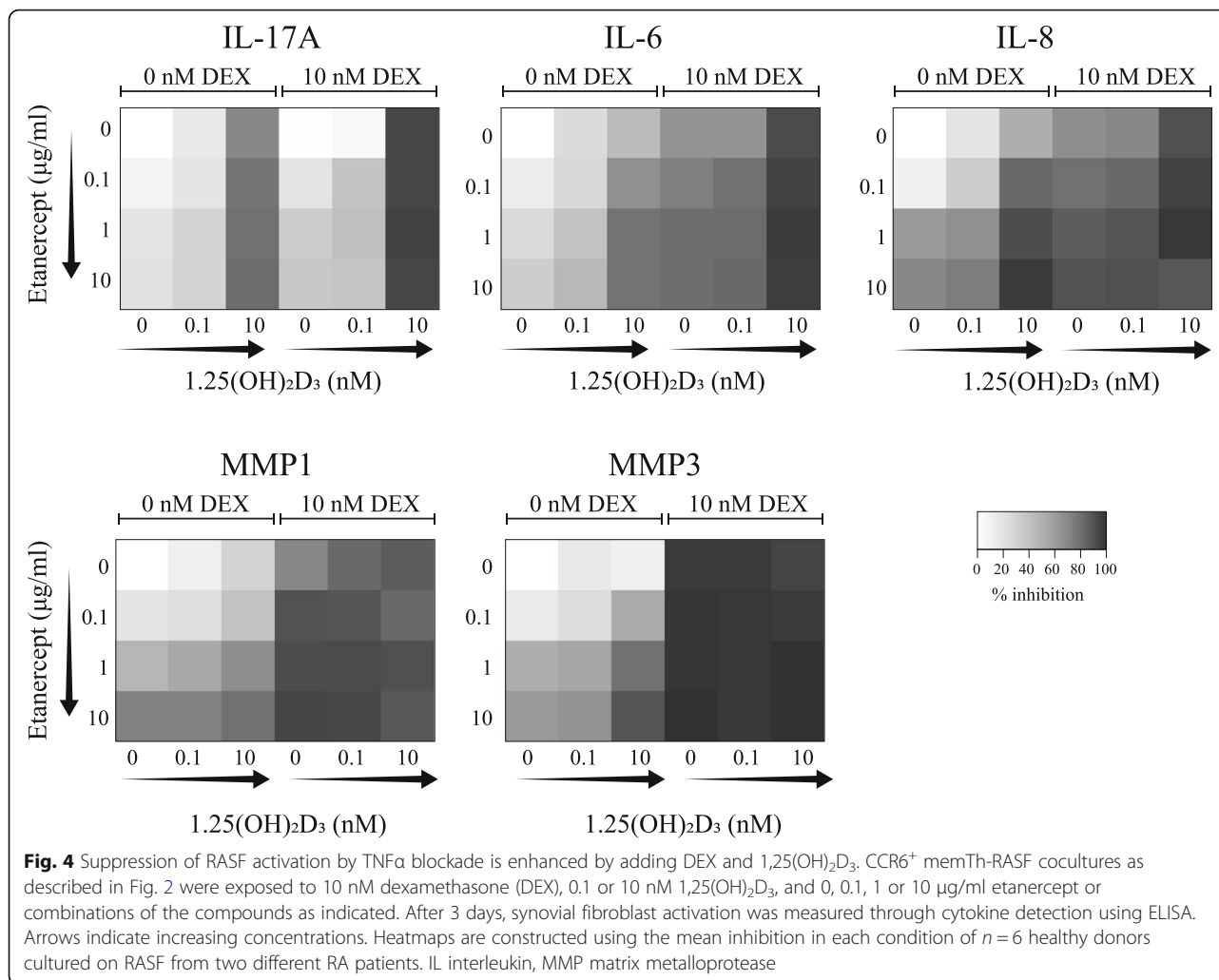


coculture system; 10 nM DEX still inhibited IL-6, IL-8, and MMP1 in CCR6 $^+$ memTh-RASF cocultures, but 0.1 nM 1,25(OH) $_2$ D $_3$ only slightly affected these proinflammatory factors and did not appear different from the 1 nM dose (Additional file 1: Figure S2). Therefore, the value of adding DEX and 1,25(OH) $_2$ D $_3$ to etanercept was assessed using 10 nM DEX and 0.1 or 10 nM 1,25(OH) $_2$ D $_3$. CCR6 $^+$ memTh cells were sorted from healthy controls and cultured together with RASF while being exposed to various combinations of 1,25(OH) $_2$ D $_3$, DEX, and the TNF α -blocking agent etanercept. Inhibition of IL-17A, IL-6, IL-8, MMP1, and MMP3 is shown as heatmaps in Fig. 4 and further detailed in Additional file 1 (Figure S3).

For IL-17A, etanercept dose-dependently inhibited cytokine expression, but this effect was stronger (darker shades) when the cells were also treated with 10 nM 1,25(OH) $_2$ D $_3$. Combining DEX with this dose of 1,25(OH) $_2$ D $_3$ further suppresses IL-17A and leaves little added effect for etanercept. IL-6 and IL-8 are more strongly inhibited by etanercept than IL-17A and show a

trend towards a dose response (left column of the heatmap, top to bottom). Adding increasing dosages of 1,25(OH) $_2$ D $_3$ augments the effects of etanercept, but the optimal effect is reached when 10 nM DEX, 10 nM 1,25(OH) $_2$ D $_3$, and etanercept are combined. Notably, under these conditions there is no significant difference between 0.1 or 10 μ g/ml etanercept and cytokine expression is more than 90% reduced. MMP1 and MMP3 show a similar pattern of inhibition as IL-6 and IL-8, except that the effect of DEX is stronger even without additional 1,25(OH) $_2$ D $_3$ or etanercept. These data suggest that combining 1,25(OH) $_2$ D $_3$ and especially DEX with etanercept has additive effects compared with etanercept alone.

Since the cells from the healthy controls that were used in Fig. 4 and Additional file 1 (Figure S3) may react differently to treatment than the cells from RA patients, the experiment was repeated using sorted CCR6 $^+$ memTh cells from treatment-naive early RA patients cultured with RASF serving as a proof of principle (Fig. 5 and Additional file 1: Figure S4). Due to large variation between patients (Additional file 1: Figure S4), there was



a less clear dose-dependent inhibition of IL-17A in response to etanercept. However, 10 nM 1,25(OH) $_2$ D $_3$ still enhanced the effects of etanercept, and IL-17A inhibition was again further increased when 10 nM DEX was added. The inhibition of IL-6 and IL-8 by etanercept was stronger in the CCR6 $^+$ memTh cells from RA patients than those from healthy individuals. Similar to the results for the healthy controls, both 1,25(OH) $_2$ D $_3$ and DEX enhanced the effects of etanercept. MMP1 and MMP3 were also inhibited by etanercept and their expression was further suppressed by DEX (Fig. 5).

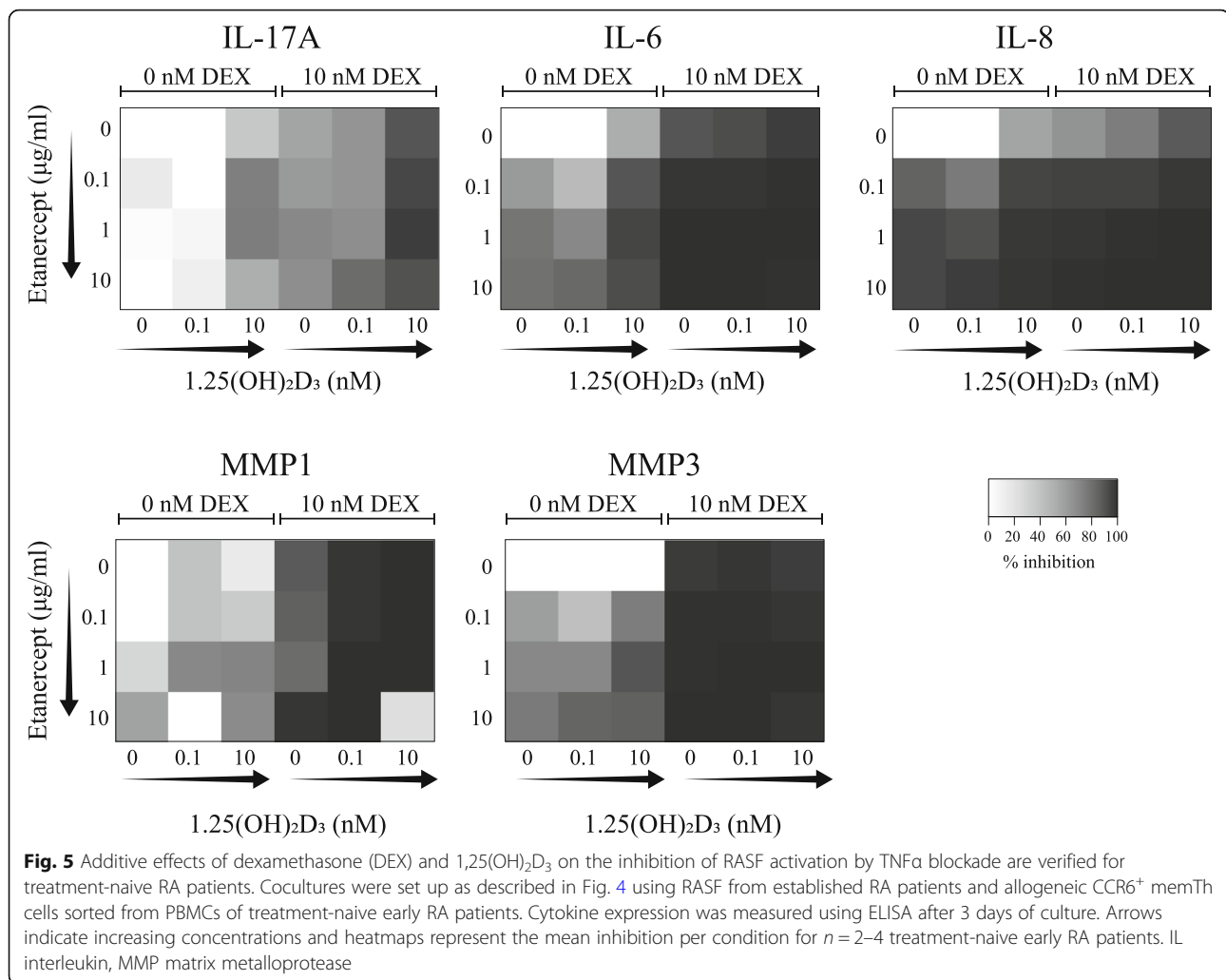
Altogether, the data from Figs. 4 and 5 show that combination with DEX, and to a lesser extent 1,25(OH) $_2$ D $_3$, provide a beneficial effect over TNF α blockade alone in a model for synovial inflammation.

Discussion

This study showed that 1,25(OH) $_2$ D $_3$ and DEX can additionally inhibit synovial inflammation modeled by CCR6 $^+$ memTh-RASF cocultures. Furthermore, combining low

doses of DEX and 1,25(OH) $_2$ D $_3$ with TNF α blockade demonstrated added value over TNF α blockade alone.

Similar to our previous results in PBMCs and memTh cells [11], 1,25(OH) $_2$ D $_3$ was a stronger modulator of IL-17A, IL-22, IFN γ , and IL-10 in CCR6 $^+$ memTh cells than DEX. This could be due to the reported resistance of CCR6 $^+$ memTh cells to cytokine inhibition and apoptosis induction by GCs [13]. Interestingly, in asthma, GC resistance is increased with decreasing vitamin D serum levels [14]. Since the vitamin D receptor can enhance the activity of the GC receptor at promoter sites, 1,25(OH) $_2$ D $_3$ may be able to overcome GC resistance through this mechanism [15]. Notably, in Crohn's disease Th17.1 cells, one of the subpopulations within CCR6 $^+$ memTh cells, are the most GC-resistant cells [16]. Since these cells can also be found at the site of inflammation in juvenile idiopathic arthritis [17] and RA (unpublished observations) further research into cell type-specific modulation by GCs may further elucidate its immunosuppressive actions in RA.



Independent of the differences in modulation of cytokines derived from CCR6⁺ memTh cells, either cultured alone or together with RASF, both 1,25(OH)₂D₃ and DEX inhibited the activation of synovial fibroblasts as demonstrated by decreased IL-6, IL-8, MMP1, MMP3, and PGE2. These data suggest that DEX has strong direct effects on RASF, which was confirmed by RASF-only cultures. Although others have shown that 1,25(OH)₂D₃ can inhibit MMP1 and MMP3 from RASF under IL-1 β stimulation [18], this was not observed in our cultures with stimulation of TNF α and IL-17A. Interestingly, whereas TNF α stimulation of RASF was generally more potent than stimulation with IL-17A, the combination of TNF α and IL-17A induced a higher level of IL-6 and MMP1 and a striking stronger increase in IL-8 and MMP3. It has been previously observed in keratinocytes that IL-8 was more strongly induced by TNF α and IL-17A than IL-6 [19]. Also, another study in RA fibroblast-like synoviocytes suggested a slightly stronger additive effect on IL-8 than IL-6, although they only used

1 ng/ml for both TNF α and IL-17A [20]. Since DEX and 1,25(OH)₂D₃ inhibit IL-8 and MMP3 both after TNF α single stimulation or TNF α -IL-17A combination, this may be an effective way to suppress even the strong stimulation that is potentially present in the RA joint.

Based on other studies showing that the vitamin D receptor and GC receptor can cooperate to enhance one another's functions [15, 21], we also expected synergistic effects of 1,25(OH)₂D₃ and DEX in CCR6⁺ memTh cells or RASF. However, this synergy was not observed, except that TNF α could only be inhibited when 1,25(OH)₂D₃ and DEX were combined. Instead, the data indicate that 1,25(OH)₂D₃ and DEX additively suppress inflammation through targeting different inflammatory pathways. 1,25(OH)₂D₃ indirectly reduces RASF activation through modulation of IL-17A and could reduce activation of other immune cells, such as macrophages, by inhibiting IFN γ [22]. DEX, on the other hand, directly affects the RASF and reduces immune cell activation, immune cell attraction, and tissue destruction through regulation of

IL-6, IL-8, and MMPs, respectively. Finally, $1,25(\text{OH})_2\text{D}_3$ and DEX are both capable of inducing the anti-inflammatory cytokine IL-10 in CCR6^+ memTh cell monocultures or in coculture with RASF, which could further contribute to inhibiting synovial inflammation.

Because of the strong immunomodulatory effects of $1,25(\text{OH})_2\text{D}_3$ and DEX, we postulated that they could be beneficial in the treatment of autoimmune diseases. This study demonstrated that DEX especially could augment the effect of TNF α blockade on RASF activation, even up to the point that no differences could be seen between the lowest and highest dose of anti-TNF α . Adding 0.1 nM $1,25(\text{OH})_2\text{D}_3$ did not contribute to this effect, but 10 nM enhanced the effects of DEX and TNF α blockade. The concentration of 0.1 nM (approximately 40 pg/ml) corresponds to the 20–80 pg/ml of $1,25(\text{OH})_2\text{D}_3$ that has been found in the synovial fluid of RA patients [23]. However, the synovial fluid is not always a perfect representation of the situation in the synovium. Furthermore, it has been reported that immune cells are capable of converting $25(\text{OH})\text{D}_3$ into $1,25(\text{OH})_2\text{D}_3$ [24, 25], suggesting that the local concentration of active vitamin D in the inflamed synovium may be higher than 0.1 nM and therefore could contribute to the anti-inflammatory effects of DEX and anti-TNF α .

Although these data indicate that a combination of DEX and TNF α blockade could be beneficial in the treatment of RA, some limitations of this study should be considered. Firstly, the current study has focused on an in-vitro culture model with only T cells and RASF, whereas an inflamed joint also contains other cell types [26]. Although $1,25(\text{OH})_2\text{D}_3$ and DEX are both known for their wide range of immunomodulatory properties [12, 27], the exact effects of combining these with TNF α blockade have not been investigated. Furthermore, the data suggest that dose reduction of TNF α blockade could be possible on combination with DEX since there is no dose-dependent effect anymore. It should be noted that the physiological concentration of etanercept in the synovial fluid has not been elaborately studied. One study found the concentration of etanercept in the synovial fluid was around 20 ng/ml in two patients receiving 50 mg etanercept every 2 weeks after 5 weeks, thus in between two dosages [28]. However, one patient who received 50 mg every week had a concentration of 100 ng/ml after 5 weeks, suggesting that the concentration shortly after etanercept injection is in the range of the 0.1 $\mu\text{g}/\text{ml}$ that was used in this study [28]. The inhibitory effects of RASF activation by this dose of etanercept have been drastically enhanced by DEX and $1,25(\text{OH})_2\text{D}_3$.

A final point to consider is that TNF α blockade has more effects than only suppressing RASF activation [29]. Therefore, it is possible that our in-vitro model overlooks interactions that may arise between the compounds and a

more complex environment. To study this, murine models for RA, such as collagen-induced arthritis, could be used as a first validation of our study. After that, a clinical trial should be designed in which a low dose of DEX is combined with TNF α blockade. Due to the perceived immunomodulatory effects of $1,25(\text{OH})_2\text{D}_3$, adding vitamin D supplements to this treatment will not only prevent the osteoporotic side effects of DEX, but it may also further enhance the therapeutic effects.

Conclusion

This study suggests an added value of combining $1,25(\text{OH})_2\text{D}_3$ with DEX for inhibiting synovial inflammation in RA patients through their distinct cell type-specific modulation properties. Furthermore, the findings in the CCR6^+ memTh-RASF functional coculture model provide a rationale for a clinical trial combining low-dose $1,25(\text{OH})_2\text{D}_3$ and DEX with TNF α blockade to improve disease management in RA.

Additional file

Additional file 1: Table S1. Characteristics of patients used in this study. **Figure S1.** $1,25(\text{OH})_2\text{D}_3$ and DEX minimally affect apoptosis in CCR6^+ memTh cells. **Figure S2.** Low doses of $1,25(\text{OH})_2\text{D}_3$ and DEX still modulate RASF activation by CCR6^+ memTh cells. **Figure S3.** Complete data behind the heatmaps of Fig. 4. **Figure S4.** Complete data behind the heatmaps of Fig. 5. (DOCX 2328 kb)

Abbreviations

CCR: C-C chemokine receptor; DEX: Dexamethasone; DMARD: Disease-modifying antirheumatic drug; GC: Glucocorticoid; IFN: Interferon; IL: Interleukin; memTh: Memory T helper; MMP: Matrix metalloproteinase; PBMC: Peripheral blood mononuclear cell; PGE2: Prostaglandin E2; RA: Rheumatoid arthritis; RASF: Rheumatoid arthritis synovial fibroblasts; RORC: RAR-related orphan receptor C; TNF: Tumor necrosis factor

Acknowledgements

We thank H.J. de Wit and P. van Geel for their extensive help in sorting the cells required for this study.

Funding

This work was supported by research grants from the Dutch Arthritis Foundation (10–1-407 and 15–2-206).

Availability of data and materials

Data sharing is not applicable to this article as no datasets were generated or analyzed during the current study.

Authors' contributions

WD contributed to study design, performed experiments, analyzed data, and wrote the manuscript. CG-L contributed to study design, performed experiments, analyzed data, and critically revised the manuscript. ND, PSA, and AMCM performed experiments. JMWH provided patient samples, provided input for the study design, and critically revised the manuscript. EMC contributed to the study design and critically revised the manuscript. EL designed and supervised the study and critically revised the manuscript. All authors read and approved the final manuscript.

Ethics approval and consent to participate

The tREACH study was approved by the medical ethics committee of the Erasmus MC and all patients signed informed consent. All patients who

donated synovial tissue after joint replacement surgery signed informed consent.

Consent for publication

Not applicable.

Competing interests

The authors declare that they have no competing interests.

Publisher's Note

Springer Nature remains neutral with regard to jurisdictional claims in published maps and institutional affiliations.

Author details

¹Department of Rheumatology, Erasmus MC, Rotterdam, the Netherlands.

²Department of Immunology, Erasmus MC, Rotterdam, the Netherlands.

³Department of Internal Medicine, Erasmus MC, Rotterdam, the Netherlands.

⁴Erasmus MC University Medical Center, Wytemaweg 80, 3015CN Rotterdam, The Netherlands.

Received: 10 April 2018 Accepted: 22 August 2018

Published online: 20 September 2018

References

- Smolen JS, Aletaha D, McInnes IB. Rheumatoid arthritis. *Lancet*. 2016;388:2023–38.
- Bartok B, Firestein GS. Fibroblast-like synoviocytes: key effector cells in rheumatoid arthritis. *Immunol Rev*. 2010;233:233–55.
- Muller-Ladner U, Kriegsmann J, Franklin BN, Matsumoto S, Geiler T, Gay RE, Gay S. Synovial fibroblasts of patients with rheumatoid arthritis attach to and invade normal human cartilage when engrafted into SCID mice. *Am J Pathol*. 1996;149:1607–15.
- van Hamburg JP, Asmawidjaja PS, Davelaar N, Mus AM, Colin EM, Hazes JM, Dolhain RJ, Lubberts E. Th17 cells, but not Th1 cells, from patients with early rheumatoid arthritis are potent inducers of matrix metalloproteinases and proinflammatory cytokines upon synovial fibroblast interaction, including autocrine interleukin-17A production. *Arthritis Rheum*. 2011;63:73–83.
- Paulissen SM, van Hamburg JP, Dankers W, Lubberts E. The role and modulation of CCR6+ Th17 cell populations in rheumatoid arthritis. *Cytokine*. 2015;74:43–53.
- Murphy CA, Langrish CL, Chen Y, Blumenschein W, McClanahan T, Kastelein RA, Sedgwick JD, Cua DJ. Divergent pro- and antiinflammatory roles for IL-23 and IL-12 in joint autoimmune inflammation. *J Exp Med*. 2003;198:1951–7.
- Corneth OB, Mus AM, Asmawidjaja PS, Klein Wolterink RG, van Nimwegen M, Brem MD, Hofman Y, Hendriks RW, Lubberts E. Absence of interleukin-17 receptor signaling prevents autoimmune inflammation of the joint and leads to a Th2-like phenotype in collagen-induced arthritis. *Arthritis Rheumatol*. 2014;66:340–9.
- Leipe J, Grunke M, Dechant C, Reindl C, Kerzendorf U, Schulze-Koops H, Skapenko A. Role of Th17 cells in human autoimmune arthritis. *Arthritis Rheum*. 2010;62:2876–85.
- Paulissen SM, van Hamburg JP, Davelaar N, Asmawidjaja PS, Hazes JM, Lubberts E. Synovial fibroblasts directly induce Th17 pathogenicity via the cyclooxygenase/prostaglandin E2 pathway, independent of IL-23. *J Immunol*. 2013;191:1364–72.
- van Hamburg JP, Asmawidjaja PS, Davelaar N, Mus AM, Cornelissen F, van Leeuwen JP, Hazes JM, Dolhain RJ, Bakx PA, Colin EM, Lubberts E. TNF blockade requires 1,25(OH)2D3 to control human Th17-mediated synovial inflammation. *Ann Rheum Dis*. 2012;71:606–12.
- Colin EM, Asmawidjaja PS, van Hamburg JP, Mus AM, van Driel M, Hazes JM, van Leeuwen JP, Lubberts E. 1,25-dihydroxyvitamin D3 modulates Th17 polarization and interleukin-22 expression by memory T cells from patients with early rheumatoid arthritis. *Arthritis Rheum*. 2010;62:132–42.
- Cain DW, Cidlowski JA. Immune regulation by glucocorticoids. *Nat Rev Immunol*. 2017;17:233–47.
- Banuelos J, Shin S, Cao Y, Bochner BS, Morales-Nebreda L, Budinger GR, Zhou L, Li S, Xin J, Linggen MW, et al. BCL-2 protects human and mouse Th17 cells from glucocorticoid-induced apoptosis. *Allergy*. 2016;71:640–50.
- Sutherland ER, Goleva E, Jackson LP, Stevens AD, Leung DY. Vitamin D levels, lung function, and steroid response in adult asthma. *Am J Respir Crit Care Med*. 2010;181:699–704.
- Zhang Y, Leung DY, Goleva E. Vitamin D enhances glucocorticoid action in human monocytes: involvement of granulocyte-macrophage colony-stimulating factor and mediator complex subunit 14. *J Biol Chem*. 2013;288:14544–53.
- Ramesh R, Kozhaya L, McKeivitt K, Djuretic IM, Carlson TJ, Quintero MA, McCauley JL, Abreu MT, Unutmaz D, Sundrud MS. Pro-inflammatory human Th17 cells selectively express P-glycoprotein and are refractory to glucocorticoids. *J Exp Med*. 2014;211:89–104.
- Nistala K, Adams S, Cambrook H, Ursu S, Olivito B, de Jager W, Evans JG, Cimaz R, Bajaj-Elliott M, Wedderburn LR. Th17 plasticity in human autoimmune arthritis is driven by the inflammatory environment. *Proc Natl Acad Sci U S A*. 2010;107:14751–6.
- Tetlow LC, Woolley DE. The effects of 1 alpha,25-dihydroxyvitamin D(3) on matrix metalloproteinase and prostaglandin E(2) production by cells of the rheumatoid lesion. *Arthritis Res*. 1999;1:63–70.
- Chiricozzi A, Guttman-Yassky E, Suarez-Farinas M, Nogales KE, Tian S, Cardinale I, Chimenti S, Krueger JG. Integrative responses to IL-17 and TNF-alpha in human keratinocytes account for key inflammatory pathogenic circuits in psoriasis. *J Invest Dermatol*. 2011;131:677–87.
- Fischer JA, Hueber AJ, Wilson S, Galm M, Baum W, Kitson C, Auer J, Lorenz SH, Moelleken J, Bader M, et al. Combined inhibition of tumor necrosis factor alpha and interleukin-17 as a therapeutic opportunity in rheumatoid arthritis: development and characterization of a novel bispecific antibody. *Arthritis Rheumatol*. 2015;67:51–62.
- Hidalgo AA, Deeb KK, Pike JW, Johnson CS, Trump DL. Dexamethasone enhances 1alpha,25-dihydroxyvitamin D3 effects by increasing vitamin D receptor transcription. *J Biol Chem*. 2011;286:36228–37.
- Schoenborn JR, Wilson CB. Regulation of interferon-gamma during innate and adaptive immune responses. In: *Advances in immunology*. Volume 96. Cambridge: Academic Press; 2007. p. 41–101.
- Inaba M, Yukioka K, Furumitsu Y, Murano M, Goto H, Nishizawa Y, Morii H. Positive correlation between levels of IL-1 or IL-2 and 1,25(OH)2D3/25-OH-D ratio in synovial fluid of patients with rheumatoid arthritis. *Life Sci*. 1997;61:977–85.
- Sigmundsdottir H, Pan J, Debes GF, Alt C, Habtezion A, Soler D, Butcher EC. DCs metabolize sunlight-induced vitamin D3 to 'program' T cell attraction to the epidermal chemokine CCL27. *Nat Immunol*. 2007;8:285–93.
- Kongsbak M, von Essen MR, Levring TB, Schjerling P, Woetmann A, Odum N, Bonefeld CM, Geisler C. Vitamin D-binding protein controls T cell responses to vitamin D. *BMC Immunol*. 2014;15:35.
- Firestein GS, McInnes IB. Immunopathogenesis of rheumatoid arthritis. *Immunity*. 2017;46:183–96.
- Dankers W, Colin EM, van Hamburg JP, Lubberts E. Vitamin D in autoimmunity: molecular mechanisms and therapeutic potential. *Front Immunol*. 2016;7:697.
- Zhou H. Clinical pharmacokinetics of etanercept: a fully humanized soluble recombinant tumor necrosis factor receptor fusion protein. *J Clin Pharmacol*. 2005;45:490–7.
- Farrugia M, Baron B. The role of TNF-alpha in rheumatoid arthritis: a focus on regulatory T cells. *J Clin Transl Res*. 2016;2:84–90.

Ready to submit your research? Choose BMC and benefit from:

- fast, convenient online submission
- thorough peer review by experienced researchers in your field
- rapid publication on acceptance
- support for research data, including large and complex data types
- gold Open Access which fosters wider collaboration and increased citations
- maximum visibility for your research: over 100M website views per year

At BMC, research is always in progress.

Learn more biomedcentral.com/submissions

