

REVIEW ARTICLE

The Potential of *In Vivo* Imaging for Optimization of Molecular and Cellular Anti-cancer Immunotherapies

Gilbert O. Fruhwirth,¹ Manfred Kneilling,^{2,3} I. Jolanda M. de Vries,⁴ Bettina Weigel,^{5,6} Mangala Srinivas⁴, Erik H. J. G. Aarntzen⁷

¹Department of Imaging Chemistry and Biology, School of Biomedical Engineering and Imaging Sciences, Kings' College London, London, UK

²Department of Preclinical Imaging and Radiopharmacy, Werner Siemens Imaging Center, Eberhard Karls University, Tuebingen, Germany

³Department of Dermatology, Eberhard Karls University, Tuebingen, Germany

⁴Department of Tumor Immunology, Radboud Institute for Molecular Life Sciences, Nijmegen, The Netherlands

⁵Genitourinary Medical Oncology and Koch Center, MD Anderson Cancer Center, Houston, USA

⁶Department of Cell Biology, Radboud Institute for Molecular Life Sciences, Nijmegen, The Netherlands

⁷Department of Radiology and Nuclear Medicine, Radboud University Medical Center, Geert Grooteplein 10, PO Box 91016500 HB, Nijmegen, The Netherlands

Abstract

This review aims to emphasize the potential of *in vivo* imaging to optimize current and upcoming anti-cancer immunotherapies: spanning from preclinical to clinical applications. Immunotherapies are an emerging class of treatments for a variety of diseases. The agents include molecular and cellular therapeutics, which aim to treat the disease through re-education of the host immune system, often *via* complex mechanisms of action. *In vivo* imaging has the potential to contribute in several different ways: (1) as a *drug development tool* to improve our understanding of their complex mechanisms of action, (2) as a *tool to predict efficacy*, for example, to stratify patients into probable responders and likely non-responders, and (3) as a *non-invasive treatment response biomarker* to guide efficient immunotherapy use and to recognize early signs of potential loss of efficacy or resistance in patients. Areas where *in vivo* imaging is already successfully implemented in onco-immunology research will be discussed and domains where its use offers great potential will be highlighted. The focus of this article is on anti-cancer immunotherapy as it currently is the most advanced immunotherapy area. However, the described concepts can also be paralleled in other immune-mediated disorders and for conditions requiring immunotherapeutic intervention. Importantly, we introduce a new study group within the European Society of Molecular Imaging with the goal to facilitate and enhance immunotherapy development through the use of *in vivo* imaging.

Key words: Immunotherapy, *In vivo* imaging, Oncology, Translation, Imaging biomarker

Imaging as a Central Biomarker in Oncological Practice

Whole-body cross-sectional imaging played a seminal role in the era of chemotherapy and it remains the predominant technique for diagnosis and response monitoring [1]. Despite ongoing discussions about the accuracy of threshold values for quantitative imaging parameters (*e.g.*, largest tumor diameter, standard uptake values) in some patient subgroups [1–4] and the mediocre capacity to guide successful translation to clinical practice [5, 6], cross-sectional imaging and associated imaging biomarkers are fundamental to drug development in oncology. Key to the success of whole-body imaging was, first of all, its sensitivity to detect tumor lesions and assess disease stage, before clinical signs and symptoms become evident. Secondly, the fairly good correlation between disease burden as measured by anatomical imaging (biomarker) and the mechanism of action of chemo- and radiotherapy (decrease in tumor volume). Lastly, potential for standardization and its relative ease-of-use pushed anatomical imaging to become a core tool rendering various imaging biomarkers accessible [7, 8].

However, since the advent of immunotherapies, with their different and more complex mechanisms of action and thus different response dynamics, it became clear that the existing volume-based anatomical imaging biomarkers (*cf.* Response Evaluation Criteria in Solid Tumors (RECIST) criteria [1]) failed to adequately predict response. Consequently, adaptations to the original response criteria were explored. Immune-related RECIST (iRECIST) have been suggested as new response criteria tailored to immunotherapies [9, 10]. At this point in time, we can conclude that immunotherapies have changed the paradigm of anti-cancer treatment, but their mechanisms of action are much more diverse and complex than those of targeted therapies (epidermal growth factor receptor (EGFR) targeting mAbs, growth signal transduction protein kinase (*e.g.*, B-Raf) inhibitors *etc.*) or conventional therapies. Novel and accurate biomarkers continue to be essential to guide immunotherapy developments to secure early and optimal benefit for cancer patients. Whole-body *in vivo* imaging has great potential to significantly contribute in this context [7, 11–13], perhaps providing answers to some of the outstanding questions in the field of onco-immunology:

- (1) What immune cell types are involved and what cell types are critical for response?
- (2) How to assess the relation between target presence, density, affinity, and response?
- (3) What is the relevance of co-expressed features in the tumor microenvironment?
- (4) How to track *in vivo* distribution, fate, persistence, and function of cell therapies?
- (5) How to increase efficiency by rational design of combination therapies?

- (6) What are (early) spatial and temporal dynamics of response?
- (7) How different are responses between individual patients?

In vivo imaging has some unique features as compared to other biomarkers based on tissue/blood samples. In general, these advantages include (i) being non-invasive thereby overcoming issues associated with the tissue/blood sampling process, (ii) yielding whole-body information thereby overcoming under-sampling issues, (iii) providing kinetic information by dynamic imaging, and (iv) enabling standardization, which is particularly important for diagnosis and treatment monitoring across different hospitals/facilities. The *in vivo* imaging community currently faces the challenge to respond to the rapid developments in immunotherapy and how to optimally contribute with our tools and techniques.

Current Issues in Anti-cancer Immunotherapy

When immunotherapy was adopted into oncological practice, it was met with great enthusiasm for two reasons: the durability of its responses and its efficacy in tumor types that were considered difficult to treat. Indeed, large randomized controlled trials on immune checkpoint inhibitors targeting cytotoxic T-lymphocyte-associated protein 4 (CTLA-4) or programmed cell death protein-1 (PD-1) and its ligand (PD-L1) pathways consistently demonstrated clinical efficacy in, *e.g.*, metastatic melanoma [14–16], non-small cell lung cancer [17–21], with typical response rates of 20–40 % that appeared to be durable [22]. Combined treatment with CTLA-4 and PD-1 mAbs increased the response rates in patients with advanced melanoma to > 50 % in line with enhanced severe adverse side effects [23]. However, there is also the sobering realization that besides combined therapies (CTLA-4 and PD-1 mAbs) in patients with metastatic melanoma, the majority of patients with other malignancies do not respond, experience serious side effects [24], or have tumors that are less amendable to treatment with immunotherapy. Tumor-infiltrating lymphocytes, low PD1/PD-L1 expression, and the presence of neo-antigens are likely associated with higher rates of response, but only provide a glimpse of the complex system that precludes response to immunotherapy [25].

Cellular anti-cancer immunotherapies have been proposed some time ago, involving redirecting immune cells to act on cells expressing tumor-associated antigens. But their development has been complex due to a variety of reasons (*e.g.*, live cell products, autologous *versus* allogeneic concepts, genetic engineering). Chimeric antigen receptor-based T cell therapies (CAR-T) are a personalized treatment that involves genetic engineering of patient-derived T cells to enable them to target the patient's tumor cells. CAR-T generated great excitement [26] appearing to bring lasting control of cancers and even cancer cure

within reach. Unprecedented clinical impact has been achieved employing CD19-targeted CAR-T in patients with refractory B cell malignancies with complete remissions in heavily pretreated patients [27–29]. Two products, tisagenlecleucel and axicabtagene ciloleucel, have recently gained FDA approval and both are CD19-targeted CAR-T products for the treatment of hematological cancers [30–32]. However, CAR-T also faces challenges. Most notably, results in solid tumors have so far been very disappointing, in part due to CAR-T not reaching their targets but also due to solid tumor microenvironments being severely immune suppressive. Moreover, many patients do not respond and exhibit resistance. Furthermore, patients may experience severe side effects including cytokine release syndrome (CRS), on-target off-tumor toxicity, and neurotoxicity [33, 34]. *In vivo* tracking of cell therapies by whole-body imaging has the potential to significantly aid the development of such cellular therapies. Due to the need for genetic engineering on the grounds of CAR introduction, there is now also the opportunity to co-encode additional payloads. That opened for the first time a convenient avenue for the introduction of non-immunogenic reporter genes into CAR constructs. These can be exploited for sensitive and repeated radionuclide imaging using short-lived radio isotopes, thereby rendering CAR-T *in vivo* tracking realistic.

Although molecular and cellular immunotherapies have transformed cancer treatment, the costs to patients and the healthcare system are staggering. Health technology assessments for FDA-approved molecular immunotherapies calculated approx. 80,000 euro per quality-adjusted-life-year [35–39]. To this, the costs of managing immune-related adverse effect should be added; approx. 20 % of patients experience major autoimmune effects [40], confirmed in post-marketing studies [41]. While monoclonal antibody-based treatments targeting immune-checkpoint inhibitors can be manufactured, distributed, and administered in ways resembling conventional processes, this is different for cellular immunotherapies. Both currently FDA-approved anti-CD19 CAR-T products require lympho-depletion prior to administration and are licensed for autologous use. This requires highly specialized and specific infrastructure/facilities (*e.g.*, on-site Good Manufacturing Practice (GMP) manufacturing of CAR-T products), high-level expertise (*e.g.*, specialized nursing staff and research teams), and is extremely cost-intensive (currently priced at almost US\$500,000/year [30, 42]).

For immunotherapies to succeed in the long term, it will be paramount to optimize their efficacy in combination with efficient patient stratification and careful response monitoring to avoid unnecessary toxicities, application to the wrong patient groups, over-treatment, and keep cost affordable. Therefore, the following roles for *in vivo* imaging as a tool-assisting immunotherapy development and application processes should actively be investigated: (i) as a drug development tool to increase immunotherapy efficacy, (ii) as a predictive tool to ensure efficient immunotherapy application, and (iii) as an early response monitoring tool to reduce the risk of side effects.

***In Vivo* Imaging as a Tool for the Development of Molecular and Cellular Immunotherapy**

Improvements in the mechanistic understanding of the processes underlying cancers and their microenvironments including the associated interplay with the immune system will ultimately lead to the identification of new targets that can be exploited for anti-cancer treatments, be the basis for more efficacious combination therapies, and help overcome resistance phenomena [25, 43, 44]. In the preclinical setting, molecular imaging can be used to track the cancer cells or any immune cells of interest through cell tracking methodology. In the clinical setting, therapeutic cells may be rendered traceable *in vivo*, but any endogenous antigen-presenting cells (APC) including cancer cells rely on detection by conventional imaging approaches, as genome editing to express fluorescent proteins, receptors, or enzymes necessary for molecular imaging is not feasible in humans.

For *in vivo* cell tracking, it is necessary to label the cells with a contrast agent matching the desired imaging technology. There are two fundamentally different approaches to label cells, direct and so-called indirect labeling, both of which have been reviewed elsewhere [45]. Briefly, direct labeling means that the contrast agents are bound to or taken up normally *ex vivo* before administration to animals or humans. Indirect labeling means that the cells of interest express a reporter, either constitutively or induced by a certain event, which allows contrast generation *in vivo* upon administration of a suitable tracer. Direct cell labeling is fundamentally affected by label dilution and, in addition, label presence is not necessarily indicative of the initially labeled cell population. Consequently, indirect cell labeling is much better suited for long-term *in vivo* cell tracking, but it requires genetic engineering to implement the reporter genes. The latter need to be matched to the imaging modality of interest with manifold options available for highly sensitive cell tracking (using bioluminescence, fluorescence, and radionuclide technologies) [46–48], including endogenous reporters unlikely to cause any immunogenic response [49–51].

In the context of immunotherapies, all the above approaches and technologies have been reported including *ex vivo* radiolabeling [52], magnetic resonance imaging [53], nanoparticle-based imaging [54], and a variety of reporter gene methods [47, 51, 55, 56]. In preclinical rodent models, the migration pattern, local expansion, and retraction of transferred cell populations as well as systemic on-site off-target toxicities can be readily visualized during therapy and thereby guide optimization of current protocols. For example, adoptive T cell therapy can be enhanced when combined with co-immunostimulatory treatments, for instance, using a 4-1BB (CD137) agonistic antibody [57]. Similarly, adoptive V γ 9V δ 2 cell-based immunotherapy, which requires treatment with small molecule mevalonate pathway inhibitors [58], could be improved using imaging to optimize their uptake in solid tumors [59]. Intravital microscopy helped to elucidate how such co-treatments enhance both tumor

infiltration and the cytotoxic activity of transferred T cells in mice [60]. Antigen-loaded dendritic cells (DCs) have been tested for stimulating tumor-antigen-specific immune responses in patients. Following transfer, DC migration and accurate positioning in lymph nodes is crucial for therapy success. Imaging allows tracking of the cells after transfer and showed that the route of administration is relevant for localization and function of transferred DCs [61–63]. Most notably, a recent study in glioma patients demonstrated proof-of-principle of applying multi-modal positron emission tomography (PET)-magnetic resonance imaging (MRI) to track reporter gene-expressing CAR-T in human brains to tumor sites with anatomical context afforded by MRI [64]. Furthermore, reporter gene technology can be configured to report inducible expression, which was exploited to image T cell activation in mouse models [65].

Multi-dimensional imaging allows simultaneous visualization of several molecular targets or cell populations and is an essential tool to investigate the synergistic effects of combination therapies. For example, bispecific antibodies can be used, which simultaneously bind surface markers on tumor cells and stimulate T cell co-receptors such as CD3. While tumor regression and enhanced T cell accumulation could be derived from alternative techniques, intravital microscopy uniquely allowed the monitoring of T cell dynamics in the tumor. It also revealed stable binding of multiple T cells to individual tumor cells as an underlying mechanism [66]. In search for effective combination therapies, tumor irradiation might modulate the tumor microenvironment to optimize immune checkpoint inhibition [67].

Likewise, imaging is a valuable tool to understand mechanisms, which cause failure of immunotherapy. For example, in immune checkpoint inhibition, little is known about interactions of checkpoint inhibitory antibodies with the host microenvironment within the tumor. Imaging allowed to track fluorescently labeled anti-PD-1 mAb in a mouse model of colon cancer and identified the removal of anti-PD-1 mAbs from its target T cells in a Fc receptor-dependent process by tumor-associated macrophages as unexpected resistance mechanism [68]. During anti-CD20 mAb therapy, Kupffer cells in the liver mediate B cell elimination by engulfing CD20-labeled B cells in a Fc-dependent manner [69]. These studies helped to optimize mAb design. In another example, the longitudinal tracking of chimeric antigen receptor (CAR) T cells labeled by [¹⁸F]NOTA-octreotide (NOTAOCT) in a mouse model demonstrated the superior targeting and expansion of micromolar affinity CARs for targeting intercellular adhesion molecule 1 (ICAM-1) overexpressing tumors which effectively improved efficacy and safety [70]. In the context of cell therapies, many clinical trials continue to be performed without knowledge about the location and fate of cells used in or derived from cell therapies *in vivo*, making it impossible to adequately monitor and assess safety. For example, in a recent clinical trial, patient deaths due to the immunotherapy exerting effects at the wrong

physiological location [71] could have been prevented if the cells had been traceable and controllable. While suicide gene options for controllability have been developed [72, 73], imaging to inform about on-target off-site locations would be highly desirable to detect unsafe conditions, possibly early enough to avoid serious events.

Significant research activities have resulted in a variety of useful imaging tools that can be combined to allow simultaneous quantification of several parameters on the molecular, cellular, and organ levels, particularly in preclinical research but also becoming available for clinical research. In fact, the main limitations comparing preclinical with clinical settings in this context are not the available imaging tools, but rather the models itself, *i.e.*, questions regarding how adequately rodent models represent human disease.

***In Vivo* Imaging as a Predictive Biomarker**

For most immunotherapies, there is little solid understanding about the role of the presence and accessibility of their therapeutic target, which hampers efficient patient stratification. Clinical studies indicate a higher anti-PD-1 treatment efficacy in metastatic melanoma patients with strong PD-L1 expression at the tumor site when compared to patients with low expression [74]. Nevertheless, anti-PD-1 treatment is efficient even in patients without PD-L1 expression at the tumor site. As the PD-L1 expression status was suggested to correlate with response, radiolabeled antibodies and antibody fragments are being developed and first applications in patients are ongoing [75–77]. It is essential to reveal the temporal dynamics of PD-L1 expression, for example, during radiotherapy [78].

Whether non-invasive *in vivo* monitoring of the PD-L1 or PD-1 expression patterns is the most accurate target remains to be elucidated, regardless, it functions as a drug efficacy tool to assess target accessibility and target saturation. The same applies to other immune checkpoints that are currently under active investigation, such as CTLA-4, LAG-3, TIM-3, and OX40.

The current quest for accurate biomarkers to this purpose has already yielded an overwhelming number of publications on several domains of immunology [79]. It should therefore be pointed out that, at this period in time, imaging is suggested as a complementary tool to other methodologies, which can be more easily translated to routine clinical care with reasonable cost-benefit ratios.

***In Vivo* Imaging to Monitor Treatment Response**

Immunotherapy in general should result in increased numbers of effector immune cells to a critical level that is able to keep the immune response going [80]. Instead of following empirically designed treatment schedules, immunotherapy

can probably be stopped as soon as it has achieved sufficient and persistent infiltration of immune cells in a patient. To the contrary, if immunotherapy fails to induce effective immune responses, patients should no longer be exposed to potentially hazardous immune-related adverse events and incremental costs to the healthcare system.

Non-invasive imaging of the activation status of the immune system might represent a promising tool to monitor the effects of immunotherapy. To this end, a [^{89}Zr]desferrioxamine-labeled anti-CD8 and anti-CD4 cys-diabodies were developed and implemented for non-invasive *in vivo* PET tracking of endogenous CD8⁺/CD4⁺ T cells in mice and humans enabling the identification of immune checkpoint inhibitor therapy responders [81, 82]; a first clinical study with the anti-CD8 cys-diabody is currently ongoing. In line with this, a single domain CD8 mAb was established to monitor cancer immunotherapy. Homogeneous distribution of CD8⁺ T cell at the tumor site indicates response, whereas CD8⁺ T cell accumulation at the margins or lack of CD8⁺ T cell expression rather indicates lack of response [83]. Others have focused in preclinical studies with CD3-specific mAbs for detection of CD4⁺ and CD8⁺ T cells [84]. Another approach focuses on metabolic profiles during distinct phases of activation of immune cells, e.g., monitoring deoxycytidine kinase activity with [^{18}F]clofarabine ([^{18}F]CFA); a first clinical study is currently running [85]. A similar approach is focused on quantifying enhanced glucose metabolism or cell proliferation of activated immune cells in the secondary lymphatic organs as a consequence of immunotherapy in humans [86]. Recently, imaging of OX40 expression, a T cell activation marker, has been preclinically implemented for immuno-PET ([^{64}Cu]DOTA-AbOX40) representing promising novel tool for monitoring immunotherapies [87]. In addition, a granzyme-detecting radiotracer [88] as well as radio-labeled IL-2 targeting the IL-2 receptor enables detection of activated CD4⁺ and CD8⁺ T cells [89] with PET. Major histocompatibility complex (MHC) class II-specific mAbs were preclinically implemented for PET imaging of antigen-presenting cells (B cells, macrophages) and CD11b-specific radio-labeled mAbs for determination of myeloid cells such as macrophages and granulocytes [90]. Besides PET, MRI is another modality suitable for whole-body tracking *in vitro*-labeled adoptively transferred cells of interest or of *in vivo*-labeled endogenous phagocytic cells. Thus, endogenous monocytes and macrophages preferentially phagocytize systemic or locally injected emulsified perfluorocarbons (PFCs) and can be easily detected by ^{19}F MRI [53, 91].

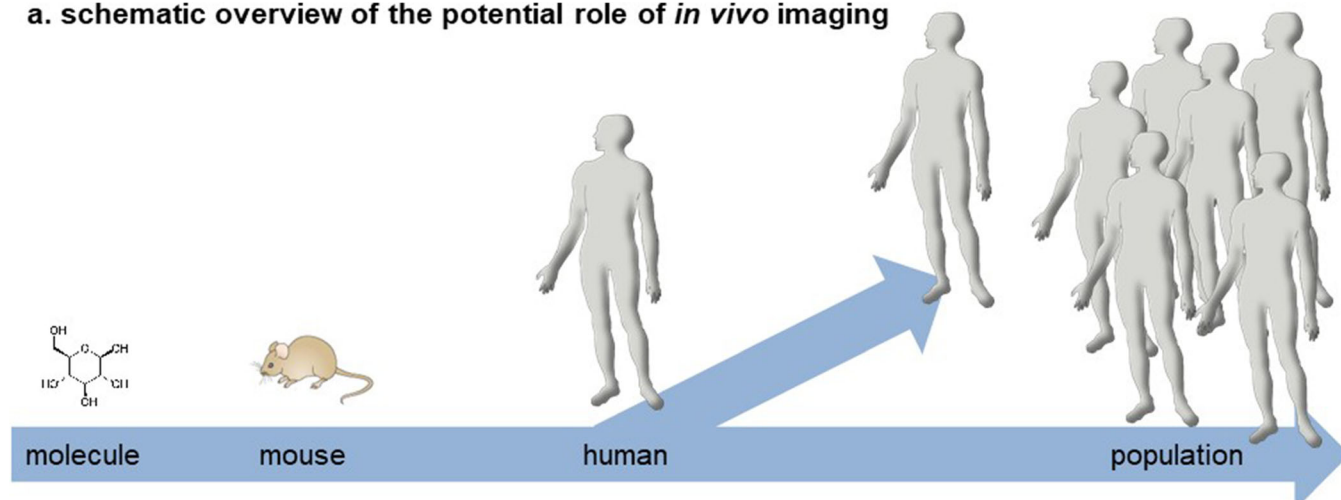
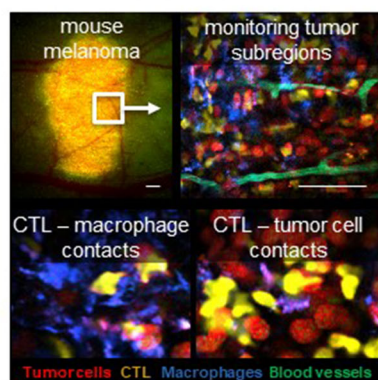
For better understanding of the basic underlining mechanisms of newly developed combined immunotherapies (agonistic and antagonistic immune checkpoint-specific mAbs or IDO inhibitors or chemotherapy or targeted therapies *etcetera*), it might be of paramount importance to track besides endogenous CD8⁺ and CD4⁺ T cells also regulatory CD4⁺ T cells, natural killer (NK) cells, B cells, neutrophils, macrophages, and dendritic cells at the tumor

site as well as secondary and tertiary lymphoid organs. To this end, multimodal imaging approaches such as simultaneous PET/MRI measurements in the preclinical [92] and clinical settings [93] are of special importance to follow the fate of PFC-targeted monocytes/macrophages and radiolabeled mAb-targeted T cells simultaneously. Consequently, development of novel methods for *in vivo* targeting (labeling) cells of interest for multimodal imaging including optical imaging is needed.

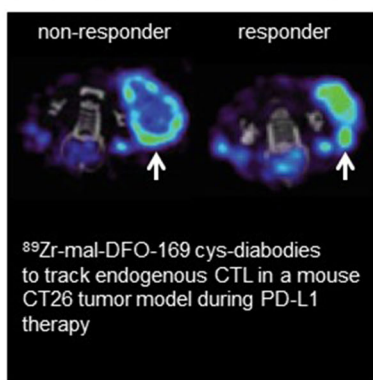
Outlook

During the development of immunotherapy, *in vivo* imaging has been indispensable by providing insights into the spatiotemporal dynamics of immune responses and the complex interactions between many different cell types at a molecular level. Currently, *in vivo* imaging is predominantly placed in the preclinical drug developmental phase of both cellular and molecular immunotherapy (Fig. 1). The full panel of molecular imaging techniques is exploited in mouse studies to identify targets or mechanisms of resistance and improve our understanding of the required elements for effective immunotherapy. Obvious areas of development area, the generation of new imaging tools for newly identified targets, and *in vivo* tracking of cellular therapeutics that do not rely on genetic engineering, hence, require labeling methodologies compatible with sensitive imaging but not interfering with cellular function. We consider the role of *in vivo* imaging established in this setting, offering unique tools to researchers in the field of onco-immunology.

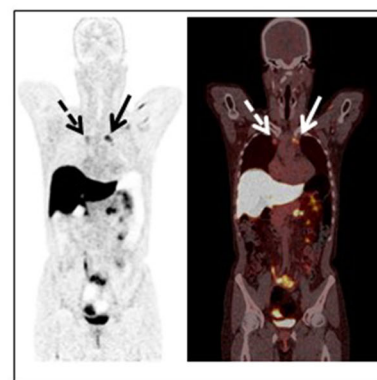
Some techniques are currently reaching into clinical application, mostly in explorative studies that focus on early response monitoring. Imaging techniques that have successfully been translated, for example, are radiolabeling of therapeutic antibodies and *ex vivo* cell labeling, for clinical imaging with, e.g., PET and MR. These techniques can be considered expensive and complex in terms of infrastructure, regulations, and logistics as compared to routine x-ray computed tomography (CT) or 2-deoxy-2-[^{18}F]fluoro-D-glucose PET/CT imaging. However, they can also add important additional molecular information crucial to select the most effective treatments and apply them efficiently [7]. Importantly, mouse models are only partly representative of human disease, and this disparity will increase with the increasing complexity of combination therapies. Furthermore, patients can be highly individual in their disease and their response to treatment, and this individual monitoring is necessary. Early clinical validation is therefore necessary to increase attrition rates. Furthermore, the application of *in vivo* imaging for early response monitoring during immunotherapy can readily be cost-effective, when unnecessary treatments and toxicities are avoided. Notably, current immunotherapies have received approval based on clinical endpoints that were based on volume-based RECIST1.1 measured by CT or

a. schematic overview of the potential role of *in vivo* imaging**b. drug development**

Weigelin et. al. unpublished data

c. response monitoring

from Tavaré et al. Cancer Res 2016

d. patient stratification

Aarntzen et al. unpublished data

Fig. 1 **a** Schematic overview of the different stages of onco-immunology research at which molecular imaging can potentially play a role. **b** Intravital multiphoton microscopy is applied to monitor immunotherapy response, e.g., it allows to monitor adoptively transferred CD8+ T cell (CTL)(yellow) tumor (red) infiltration with high spatial resolution and to quantify interactions with other immune cells (macrophages, blue) or stromal elements (blood vessels, green) of the tumor microenvironment. **c** Preclinical PET imaging using ⁸⁹Zr-mal-DFO-169 cys-diabodies to track endogenous CTLs in a mouse CT26 tumor model during PD-L1 therapy, demonstrating that response to PD-L1 inhibition coincides with infiltration of CTLs deep into the tumor (arrow, right panel), in contrast to non-responding mice in which CTL remain at the rim of tumors (arrow, left panel) [81]. **d** Coronal images of a [¹⁸F]fluoroestradiol PET/CT in a metastatic breast cancer patient, prior to start hormonal treatment, demonstrating estrogen-receptor expression in two mediastinal lymph node metastases (arrows) (of note, physiological high tracer uptake in the liver and excretion *via* the kidneys and urinary bladder)

MRI, which are now demonstrated to underestimate the clinical benefit of patients, especially those with atypical response patterns.

For patient stratification, *in vivo* imaging might have a more difficult task to identify probable responders from a larger cohort of patients. For such application, *in vivo* imaging has competition from other potential biomarkers that provide off-the-shelf and high-throughput solutions like analyses of circulating tumor cells or tumor DNA, which for these reasons receive interest from the industry. We foresee that *in vivo* imaging will play a limited role in this domain, although implementation of *in vivo* imaging to support clinical decision making is being reported, for

example, [¹⁸F]fluoroestradiol PET imaging in metastatic breast cancer [94, 95].

These considerations on the potential role of *in vivo* imaging can be extrapolated to other fields that increasingly apply cellular or molecular immunotherapy, *i.e.*, multiple sclerosis, diabetes type 1, transplantation and induction of tolerance [96, 97], neurodegenerative diseases [98], and infectious diseases [99]. Despite the promise of imaging the field of immunotherapy, several major hurdles remain. Successful application will require close collaborations between disparate groups, such as scientists, imaging specialists, contrast agent chemists, clinicians, and regulatory bodies.

The New ESMI Onco-immunology and Therapy Study Group

The Onco-immunology and Therapy study group strongly believes that *in vivo* imaging is an essential part of the translation of new concepts and immunotherapies to the benefit of patients, by facilitating:

- a. Studies to further improve our mechanistic understanding of the immune system.
- b. Studies to better understand the mechanisms of action of existing and new immuno-therapies in preclinical and clinical settings.
- c. Hypothesis-driven design of new immunotherapies and combination therapies.

We therefore will reach out and advertise use of imaging in different immunotherapy areas to further spread implementation of imaging into onco-immunology and immunotherapy research through information and education. New scientific collaborations with related interest groups and scientific communities that foster the above-mentioned aims will be stimulated to identify needs and jointly seek for matching solutions.

Acknowledgements. We gratefully thank the European Society for Molecular Imaging for their support and the possibility of establishing this study group as a platform for scientific exchange within the society and beyond. The writing of this review was initiated by the members of the Onco-immunology and Therapy Study Group of the European Society for Molecular Imaging (ESMI).

Funding Information This work was supported by the European Research Council (ERC) Starting Grant (CoNQUEST Grant no. 336454) to MS. IJMdV received NWO-Vici 918.14.655. EA received support from the Radboud Oncologie Fonds, partner of Dutch Cancer Society grant KUN2015-8106. BW was supported by the Netherlands Organisation for Scientific Research (NWO) Rubicon Grant (019.162LW.020). MK was supported by the Werner Siemens-Foundation. GOF receives support from Cancer Research UK *via* a Multidisciplinary Project Award [C48390/A21153] and Worldwide Cancer Research [16 1135] as well as through the King's College London and UCL Comprehensive Cancer Imaging Centre, funded by Cancer Research UK and EPSRC, the Wellcome/EPSCRC Centre for Medical Engineering at King's College London [WT 203148/Z/16/Z], the British Heart Foundation, and the Royal Society.

Compliance with Ethical Standards

Conflict of Interest

The authors declare that they have no conflict of interest.

Open Access This article is distributed under the terms of the Creative Commons Attribution 4.0 International License (<http://creativecommons.org/licenses/by/4.0/>), which permits unrestricted use, distribution, and reproduction in any medium, provided you give appropriate credit to the original author(s) and the source, provide a link to the Creative Commons license, and indicate if changes were made.

References

1. Eisenhauer EA, Therasse P, Bogaerts J et al (2009) New response evaluation criteria in solid tumours: revised RECIST guideline (version 1.1). *Eur J Cancer* 45:228–247
2. Mandrekar SJ, An MW, Meyers J, Grothey A et al (2014) Evaluation of alternate categorical tumor metrics and cut points for response categorization using the RECIST 1.1 data warehouse. *J Clin Oncol* 32:841–850
3. Bogaerts J, Ford R, Sargent D et al (2009) Individual patient data analysis to assess modifications to the RECIST criteria. *Eur J Cancer* 45:248–260
4. Sargent DJ, Rubinstein L, Schwartz L et al (2009) Validation of novel imaging methodologies for use as cancer clinical trial end-points. *Eur J Cancer* 45:290–299
5. Kola I, Landis J (2004) Can the pharmaceutical industry reduce attrition rates? *Nat Rev Drug Discov* 3:711–715
6. Therasse P, Eisenhauer EA, Buyse M (2006) Update in methodology and conduct of cancer clinical trials. *Eur J Cancer* 42:1322–1330
7. O'Connor JP, Aboagye EO, Adams JE et al (2017) Imaging biomarker roadmap for cancer studies. *Nat Rev Clin Oncol* 14:169–186
8. Gillies RJ, Kinahan PE, Hricak H (2016) Radiomics: images are more than pictures, they are data. *Radiology* 278:563–577
9. Seymour L, Bogaerts J, Perrone A et al (2017) iRECIST: guidelines for response criteria for use in trials testing immunotherapeutics. *Lancet Oncol* 18:e143–e152
10. Wolchok JD, Hoos A, O'Day S et al (2009) Guidelines for the evaluation of immune therapy activity in solid tumors: immune-related response criteria. *Clin Cancer Res* 15:7412–7420
11. Ponomarev V (2017) Advancing immune and cell-based therapies through imaging. *Mol Imaging Biol* 19:379–384
12. Weissleder R, Pittet MJ (2008) Imaging in the era of molecular oncology. *Nature* 452:580–589
13. Nishino M, Ramaiya NH, Hatabu H, Hodi FS (2017) Monitoring immune-checkpoint blockade: response evaluation and biomarker development. *Nat Rev Clin Oncol* 14:655–668
14. Postow MA, Chesney J, Pavlick AC et al (2015) Nivolumab and ipilimumab *versus* ipilimumab in untreated melanoma. *New Engl J Med* 372:2006–2017
15. Robert C, Schachter J, Long GV et al (2015) Pembrolizumab *versus* ipilimumab in advanced melanoma. *New Engl J Med* 372:2521–2532
16. Hodi FS, O'Day SJ, McDermott DF et al (2010) Improved survival with ipilimumab in patients with metastatic melanoma. *New Engl J Med* 363:711–723
17. Garon EB, Rizvi NA, Hui R et al (2015) Pembrolizumab for the treatment of non-small-cell lung cancer. *New Engl J Med* 372:2018–2028
18. Herbst RS, Baas P, Kim DW et al (2016) Pembrolizumab *versus* docetaxel for previously treated, PD-L1-positive, advanced non-small-cell lung cancer (KEYNOTE-010): a randomised controlled trial. *Lancet* 387:1540–1550
19. Borghaei H, Brahmer J (2016) Nivolumab in nonsquamous non-small-cell lung cancer. *New Engl J Med* 374:493–494
20. Carbone DP, Reck M, Paz-Ares L et al (2017) First-line nivolumab in stage IV or recurrent non-small-cell lung cancer. *New Engl J Med* 376:2415–2426
21. Gettinger S, Rizvi NA, Chow LQ et al (2016) Nivolumab monotherapy for first-line treatment of advanced non-small-cell lung cancer. *J Clin Oncol* 34:2980–2987
22. Schadendorf D, Hodi FS, Robert C et al (2015) Pooled analysis of long-term survival data from phase II and phase III trials of ipilimumab in unresectable or metastatic melanoma. *J Clin Oncol* 33:1889–1894
23. Wolchok JD, Rollin L, Larkin J (2017) Nivolumab and ipilimumab in advanced melanoma. *New Engl J Med* 377:2503–2504
24. Topalian SL, Hodi FS, Brahmer JR et al (2012) Safety, activity, and immune correlates of anti-PD-1 antibody in cancer. *New Engl J Med* 366:2443–2454
25. Chen DS, Mellman I (2017) Elements of cancer immunity and the cancer-immune set point. *Nature* 541:321–330
26. Couzin-Frankel J (2013) Breakthrough of the year 2013. Cancer immunotherapy. *Science* 342:1432–1433
27. Brentjens RJ, Davila ML, Riviere I et al (2013) CD19-targeted T cells rapidly induce molecular remissions in adults with chemotherapy-refractory acute lymphoblastic leukemia. *Sci Transl Med* 5:177ra138
28. Kochenderfer JN, Dudley ME, Kassim SH et al (2015) Chemotherapy-refractory diffuse large B-cell lymphoma and indolent B-cell malignancies can be effectively treated with autologous T cells expressing an anti-CD19 chimeric antigen receptor. *J Clin Oncol* 33:540–549

29. Porter DL, Hwang WT, Frey NV et al (2015) Chimeric antigen receptor T cells persist and induce sustained remissions in relapsed refractory chronic lymphocytic leukemia. *Sci Transl Med* 7:303ra139
30. Bach PB, Giral SA, Saltz LB (2017) FDA approval of tisagenlecleucel: promise and complexities of a \$475000 cancer drug. *J Am Med Assoc* 318:1861–1862
31. Liu Y, Chen X, Han W, Zhang Y (2017) Tisagenlecleucel, an approved anti-CD19 chimeric antigen receptor T-cell therapy for the treatment of leukemia. *Drugs Today (Barc)* 53:597–608
32. Neelapu SS, Locke FL, Bartlett NL et al (2017) Axicabtagene ciloleucel CAR T-cell therapy in refractory large B-cell lymphoma. *N Engl J Med* 377:2531–2544
33. Lamers CH, Klaver Y, Gratama JW et al (2016) Treatment of metastatic renal cell carcinoma (mRCC) with CAIX CAR-engineered T-cells—a completed study overview. *Biochem Soc T* 44:951–959
34. Morgan RA, Yang JC, Kitano M et al (2010) Case report of a serious adverse event following the administration of T cells transduced with a chimeric antigen receptor recognizing ERBB2. *Mol Ther* 18:843–851
35. Doss S, Garrett Z, Sutcliffe F, Stevens A (2012) NICE guidance on rituximab for first-line treatment of symptomatic stage III-IV follicular lymphoma in previously untreated patients. *Lancet Oncol* 13:128–130
36. Lovett R, George E, Adler A (2015) NICE guidance on sipuleucel-T for asymptomatic or minimally symptomatic metastatic hormone-relapsed prostate cancer. *Lancet Oncol* 16:369–370
37. Watson I, Dominguez PP, Donegan E et al (2016) NICE guidance on pembrolizumab for advanced melanoma. *Lancet Oncol* 17:21–22
38. Diaz RA, Sidhu R, Robertson J, Adam J (2013) NICE guidance on ipilimumab for previously treated advanced melanoma. *Lancet Oncol* 14:23–24
39. Hall CJ, Doss S, Robertson J, Adam J (2014) NICE guidance on ipilimumab for treating previously untreated advanced (unresectable or metastatic) melanoma. *Lancet Oncol* 15:1056–1057
40. Robert C, Thomas L, Bondarenko I et al (2011) Ipilimumab plus dacarbazine for previously untreated metastatic melanoma. *New Engl J Med* 364:2517–2526
41. Horvat TZ, Adel NG, Dang TO et al (2015) Immune-related adverse events, need for systemic immunosuppression, and effects on survival and time to treatment failure in patients with melanoma treated with ipilimumab at Memorial Sloan Kettering Cancer Center. *J Clin Oncol* 33:3193–3198
42. Prasad V (2018) Immunotherapy: tisagenlecleucel - the first approved CAR-T-cell therapy: implications for payers and policy makers. *Nat Rev Clin Oncol* 15:11–12
43. Chen DS, Mellman I (2013) Oncology meets immunology: the cancer-immunity cycle. *Immunity* 39:1–10
44. Fridman WH, Pages F, Sautes-Fridman C, Galon J (2012) The immune contexture in human tumours: impact on clinical outcome. *Nat Rev Cancer* 12:298–306
45. Kircher MF, Gambhir SS, Grimm J (2011) Noninvasive cell-tracking methods. *Nat Rev Clin Oncol* 8:677–688
46. Brader P, Serganova I, Blasberg RG (2013) Noninvasive molecular imaging using reporter genes. *J Nucl Med* 54:167–172
47. Rodriguez EA, Campbell RE, Lin JY et al (2017) The growing and glowing toolbox of fluorescent and photoactive proteins. *Trends Biochem Sci* 42:111–129
48. Xu T, Close D, Handagama W et al (2016) The expanding toolbox of *in vivo* bioluminescent imaging. *Front Oncol* 6:150
49. Castanares MA, Mukherjee A, Chowdhury WH et al (2014) Evaluation of prostate-specific membrane antigen as an imaging reporter. *J Nucl Med* 55:805–811
50. Portulano C, Paroder-Belenitsky M, Carrasco N (2014) The Na⁺/I⁻ symporter (NIS): mechanism and medical impact. *Endocr Rev* 35:106–149
51. Thunemann M, Schorg BF, Feil S et al (2017) Cre/lox-assisted non-invasive *in vivo* tracking of specific cell populations by positron emission tomography. *Nat Commun* 8:444
52. Zeelen C, Paus C, Draper D et al (2018) In-vivo imaging of tumor-infiltrating immune cells: implications for cancer immunotherapy. *Quart J Nucl Med* 62:56–77
53. Ahrens Eric TE (2013) Tracking immune cells *in vivo* using magnetic resonance imaging. *Nat Rev Immunol* 13:755–763
54. Weissleder R, Nahrendorf M, Pittet MJ (2014) Imaging macrophages with nanoparticles. *Nat Mater* 13:125–138
55. Bousso P (2008) T-cell activation by dendritic cells in the lymph node: lessons from the movies. *Nat Rev Immunol* 8:675–684
56. Moroz MA, Zhang H, Lee J et al (2015) Comparative analysis of T cell imaging with human nuclear reporter genes. *J Nucl Med* 56:1055–1060
57. Chacon JA, Wu RC, Sukhmalchandra P et al (2013) Co-stimulation through 4-1BB/CD137 improves the expansion and function of CD8(+) melanoma tumor-infiltrating lymphocytes for adoptive T-cell therapy. *PLoS One* 8:e60031
58. Parente-Pereira AC, Shmeeda H, Whilding LM et al (2014) Adoptive immunotherapy of epithelial ovarian cancer with Vgamma9Vdelta2 T cells, potentiated by liposomal alendronic acid. *J Immunol* 193:5557–5566
59. Edmonds S, Volpe A, Shmeeda H et al (2016) Exploiting the metal-chelating properties of the drug cargo for *in vivo* positron emission tomography imaging of liposomal nanomedicines. *ACS Nano* 10:10294–10307
60. Weigel B, Bolanos E, Teixeira A et al (2015) Focusing and sustaining the antitumor CTL effector killer response by agonist anti-CD137 mAb. *Proc Natl Acad Sci USA* 112:7551–7556
61. Aarntzen EH, Srinivas M, Bonetto F et al (2013) Targeting of 111In-labeled dendritic cell human vaccines improved by reducing number of cells. *Clin Cancer Res* 19:1525–1533
62. de Vries IJ, Lesterhuis WJ, Barentsz JO et al (2005) Magnetic resonance tracking of dendritic cells in melanoma patients for monitoring of cellular therapy. *Nat Biotechnol* 23:1407–1413
63. Lesterhuis WJ, de Vries IJ, Schreiber G et al (2011) Route of administration modulates the induction of dendritic cell vaccine-induced antigen-specific T cells in advanced melanoma patients. *Clin Cancer Res* 17:5725–5735
64. Keu KV, Witney TH, Yaghoubi S et al (2017) Reporter gene imaging of targeted T cell immunotherapy in recurrent glioma. *Sci Transl Med* 9. <https://doi.org/10.1126/scitranslmed.aag2196>
65. Ponomarev V, Doubrovin M, Lyddane C et al (2001) Imaging TCR-dependent NFAT-mediated T-cell activation with positron emission tomography *in vivo*. *Neoplasia* 3:480–488
66. Lehmann S, Perera R, Grimm HP et al (2016) *In vivo* fluorescence imaging of the activity of CEA TCB, a novel T-cell bispecific antibody, reveals highly specific tumor targeting and fast induction of T-cell-mediated tumor killing. *Clin Cancer Res* 22:4417–4427
67. Heskamp S, Hobo W, Molkenboer-Kuening JD et al (2015) Noninvasive imaging of tumor PD-L1 expression using radiolabeled anti-PD-L1 antibodies. *Cancer Res* 75:2928–2936
68. Arlauckas SP, Garris CS, Kohler RH et al (2017) *In vivo* imaging reveals a tumor-associated macrophage-mediated resistance pathway in anti-PD-1 therapy. *Sci Transl Med* 9
69. Grandjean CL, Montalvo F, Celli S et al (2016) Intravital imaging reveals improved Kupffer cell-mediated phagocytosis as a mode of action of glycoengineered anti-CD20 antibodies. *Sci Rep* 6:34382
70. Park S, Shevlin E, Vedvyas Y et al (2017) Micromolar affinity CAR T cells to ICAM-1 achieves rapid tumor elimination while avoiding systemic toxicity. *Sci Rep* 7:14366
71. Linette GP, Stadtmauer EA, Maus MV et al (2013) Cardiovascular toxicity and titin cross-reactivity of affinity-enhanced T cells in myeloma and melanoma. *Blood* 122:863–871
72. Di Stasi A, Tey SK, Dotti G et al (2011) Inducible apoptosis as a safety switch for adoptive cell therapy. *N Engl J Med* 365:1673–1683
73. Stavrou M, Philip B, Traynor-White C et al (2018) A rapamycin-activated caspase 9-based suicide gene. *Mol Ther* 26:1266–1276
74. Daud AI, Wolchok JD, Robert C et al (2016) Programmed death-ligand 1 expression and response to the anti-programmed death 1 antibody pembrolizumab in melanoma. *J Clin Oncol* 34:4102–4109
75. Mayer AT, Natarajan A, Gordon S et al (2016) Practical ImmunoPET radiotracer design considerations for human immune checkpoint imaging. *J Nucl Med* 58:538–546
76. Natarajan A, Mayer AT, Xu L et al (2015) Novel radiotracer for immunoPET imaging of PD-1 checkpoint expression on tumor infiltrating lymphocytes. *Bioconjug Chem* 26:2062–2069
77. Hettich M, Braun F, Bartholoma MD et al (2016) High-resolution PET imaging with therapeutic antibody-based PD-1/PD-L1 checkpoint tracers. *Theranostics* 6:1629–1640
78. Wierstra P.J., Molkenboer-Kuening J.D.M., Sandker G., Bussink J., Gotthardt M. Aarntzen E., Heskamp S., MicroSPECT/CT imaging to monitor subsequent changes in tumor PD-L1 expression after radiotherapy. In: European Molecular Imaging Meeting, 20–23 March 2018, San Sebastian, Spain, Abstract #0159)

79. Tang J, Shalabi A, Hubbard-Lucey VM (2018) Comprehensive analysis of the clinical immuno-oncology landscape. *Ann Oncol* 29:84–91
80. Topalian SL, Taube JM, Anders RA, Pardoll DM (2016) Mechanism-driven biomarkers to guide immune checkpoint blockade in cancer therapy. *Nat Rev Cancer* 16:275–287
81. Tavare R, Escuin-Ordinas H, Mok S et al (2016) An effective immuno-PET imaging method to monitor CD8-dependent responses to immunotherapy. *Cancer Res* 76:73–82
82. Freise AC, Zettlitz KA, Salazar FB, Lu X, Tavare R, Wu AM (2017) ImmunoPET imaging of murine CD4(+) T cells using anti-CD4 Cys-diabody: effects of protein dose on T cell function and imaging. *Mol Imaging Biol* 19:599–609
83. Rashidian M, Ingram JR, Dougan M et al (2017) Predicting the response to CTLA-4 blockade by longitudinal noninvasive monitoring of CD8 T cells. *J Exp Med* 214:2243–2255
84. Larimer BM, Wehrenberg-Klee E, Caraballo A, Mahmood U (2016) Quantitative CD3 PET imaging predicts tumor growth response to anti-CTLA-4 therapy. *J Nucl Med* 57:1607–1611
85. Kim W, Le TM, Wei L et al (2016) [¹⁸F]CFA as a clinically translatable probe for PET imaging of deoxycytidine kinase activity. *Proc Natl Acad Sci USA* 113:4027–4032
86. Ribas A, Benz MR, Allen-Auerbach MS et al (2010) Imaging of CTLA4 blockade-induced cell replication with ¹⁸F-FLT PET in patients with advanced melanoma treated with tremelimumab. *J Nucl Med* 51:340–346
87. I SA, A TM, Sagiv-Barfi I, et al. (2018) Imaging activated T cells predicts response to cancer vaccines. *J Clin Invest* 128:2569–2580
88. Larimer BM, Wehrenberg-Klee E, Dubois F et al (2017) Granzyme B PET imaging as a predictive biomarker of immunotherapy response. *Cancer Res* 77:2318–2327
89. Hartimath SV, Draghiciu O, van de Wall S et al (2017) Noninvasive monitoring of cancer therapy induced activated T cells using [imaging activated T cells predicts response to cancer vaccines F]FB-IL-2 PET imaging. *Oncoimmunology* 6:e1248014
90. Rashidian M, Keliher EJ, Bilate AM et al (2015) Noninvasive imaging of immune responses. *Proc Natl Acad Sci USA* 112:6146–6151
91. Temme S, Bonner F, Schrader J, Flogel U (2012) ¹⁹F magnetic resonance imaging of endogenous macrophages in inflammation. *Wiley Interdiscip Rev Nanomed Nanobiotechnol* 4:329–343
92. Judenhofer MS, Wehrl HF, Newport DF et al (2008) Simultaneous PET-MRI: a new approach for functional and morphological imaging. *Nat Med* 14:459–465
93. Wehrl HF, Sauter AW, Divine MR, Pichler BJ (2015) Combined PET/MR: a technology becomes mature. *J Nucl Med* 56:165–168
94. Gong C, Yang Z, Sun Y et al (2017) A preliminary study of ¹⁸F-FES PET/CT in predicting metastatic breast cancer in patients receiving docetaxel or fulvestrant with docetaxel. *Sci Rep* 7:6584
95. Peterson LM, Kurland BF, Schubert EK et al (2014) A phase 2 study of 16alpha-[¹⁸F]-fluoro-17-beta-estradiol positron emission tomography (FES-PET) as a marker of hormone sensitivity in metastatic breast cancer (MBC). *Mol Imaging Biol* 16:431–440
96. Safinia N, Vaikunthanathan T, Fraser H et al (2016) Successful expansion of functional and stable regulatory T cells for immunotherapy in liver transplantation. *Oncotarget* 7:7563–7577
97. Afzali B, Edozie FC, Fazekasova H et al (2013) Comparison of regulatory T cells in hemodialysis patients and healthy controls: implications for cell therapy in transplantation. *Clin J Am Soc Nephrol* 8:1396–1405
98. Naumova AV, Modo M, Moore A, Murry CE, Frank JA (2014) Clinical imaging in regenerative medicine. *Nat Biotechnol* 32:804–818
99. Hotchkiss RS, Moldawer LL (2014) Parallels between cancer and infectious disease. *New Engl J Med* 371:380–383