



HHS Public Access

Author manuscript

Cancer Cell. Author manuscript; available in PMC 2019 August 13.

Published in final edited form as:

Cancer Cell. 2018 August 13; 34(2): 346–348. doi:10.1016/j.ccell.2018.07.006.

The SS18-SSX Oncoprotein Hijacks KDM2B-PRC1.1 to Drive Synovial Sarcoma

Ana Banito, Xiang Li, Aime´e N. Laporte, Jae-Seok Roe, Francisco Sanchez-Vega, Chun-Hao Huang, Amanda R. Dancsok, Katerina Hatzi, Chi-Chao Chen, Darjus F. Tschaharganeh, Rohit Chandwani, Nilgun Tasdemir, Kevin B. Jones, Mario R. Capecchi, Christopher R. Vakoc, Nikolaus Schultz, Marc Ladanyi, Torsten O. Nielsen, and Scott W. Lowe*

In the originally published version of this article, there is a duplicated western blot panel in Figure 5D. This figure shows the co-immunoprecipitation of BRG1 and members of the polycomb repressive complex 1.1 together with HA-SS18-SSX1. The image for the BRG1 western blot was inadvertently inserted instead of the BCOR western blot. The error occurred when re-introducing original western blot images to enhance image quality for publication. The correct Figure 5D, as originally submitted to *Cancer Cell*, is now shown here and in the online version of the paper. The authors apologize for any confusion this error may have caused.

*Correspondence: lowes@mskcc.org.

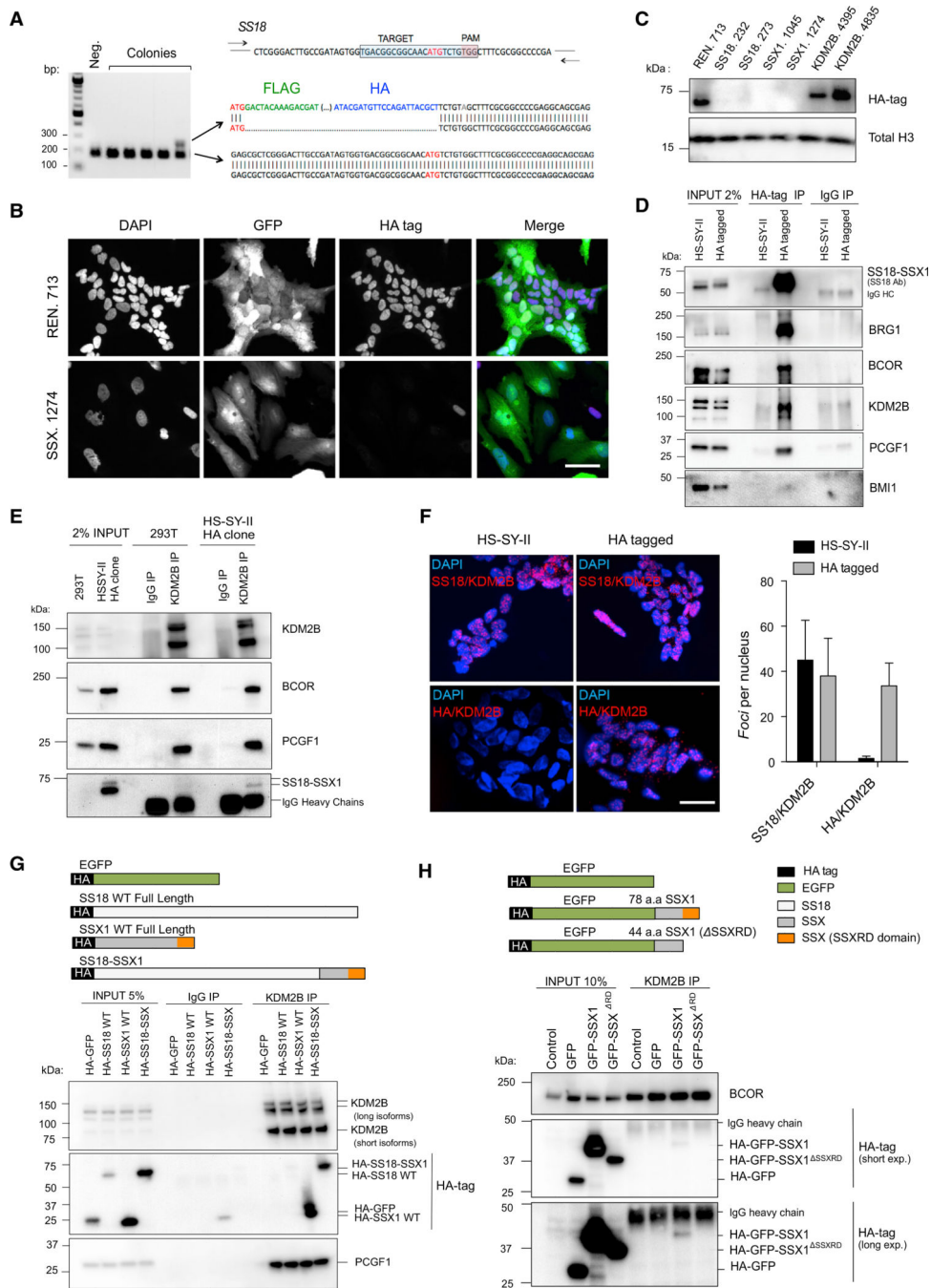


Figure 5.
Endogenous SS18-SSX1 Interacts with PRC1.1 (corrected)

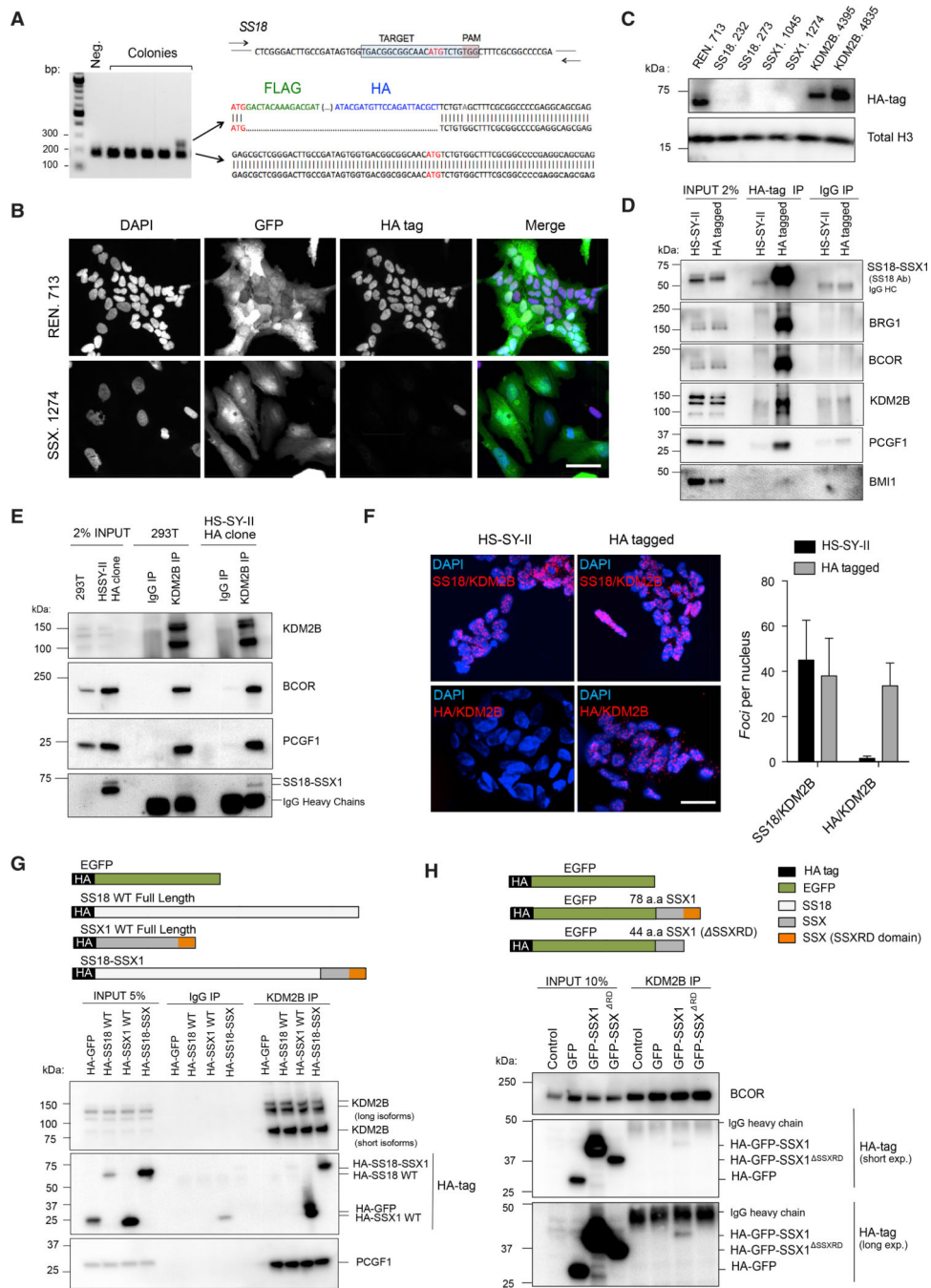


Figure 5.
Endogenous SS18-SSX1 Interacts with PRC1.1 (original)