


**TECHNOLOGY REPORT**

# A CreER mouse to study melanin concentrating hormone signaling in the developing brain

Staci E. Engle<sup>1</sup> | Patrick J. Antonellis<sup>1</sup> | Logan S. Whitehouse<sup>1</sup> | Ruchi Bansal<sup>1</sup> | Michelle R. Emond<sup>2</sup> | James D. Jontes<sup>2</sup> | Robert A. Kesterson<sup>3</sup> | Kirk Mykytyn<sup>4</sup> | Nicolas F. Berbari<sup>1</sup> 

<sup>1</sup>Department of Biology, Indiana University-Purdue University Indianapolis, Indianapolis, Indiana

<sup>2</sup>Department of Neuroscience, College of Medicine, Ohio State University, Columbus, Ohio

<sup>3</sup>Department of Genetics, University of Alabama at Birmingham, Birmingham, Alabama

<sup>4</sup>Department of Biological Chemistry and Pharmacology, College of Medicine, Ohio State University, Columbus, Ohio

**Correspondence**

Nicolas F. Berbari, PhD, Indiana University-Purdue University Indianapolis, Department of Biology, 723 W. Michigan Street, Indianapolis, IN 46202.

Email: nberbari@iupui.edu

**Funding information**

National Institutes of Health, Grant/Award Number: RO1 DK 114008; P30 AR048311P30 CA13148; National Institute of Diabetes and Digestive and Kidney Diseases, Grant/Award Number: P30 DK05336P30 DK074038P30 DK097512P60 DK079626R01 DK114008

**Summary**

The neuropeptide, melanin concentrating hormone (MCH), and its G protein-coupled receptor, melanin concentrating hormone receptor 1 (Mchr1), are expressed centrally in adult rodents. MCH signaling has been implicated in diverse behaviors such as feeding, sleep, anxiety, as well as addiction and reward. While a model utilizing the Mchr1 promoter to drive constitutive expression of Cre recombinase (Mchr1-Cre) exists, there is a need for an inducible Mchr1-Cre to determine the roles for this signaling pathway in neural development and adult neuronal function. Here, we generated a BAC transgenic mouse where the Mchr1 promoter drives expression of tamoxifen inducible CreER recombinase. Many aspects of the Mchr1-Cre expression pattern are recapitulated by the Mchr1-CreER model, though there are also notable differences. Most strikingly, compared to the constitutive model, the new Mchr1-CreER model shows strong expression in adult animals in hypothalamic brain regions involved in feeding behavior but diminished expression in regions involved in reward, such as the nucleus accumbens. The inducible Mchr1-CreER allele will help reveal the potential for Mchr1 signaling to impact neural development and subsequent behavioral phenotypes, as well as contribute to the understanding of the MCH signaling pathway in terminally differentiated adult neurons and the diverse behaviors that it influences.

**KEYWORDS**

arcuate nucleus, hypothalamus, median eminence, nucleus accumbens, paraventricular nucleus

**1 | INTRODUCTION**

Originally discovered in fish as a pituitary secreted peptide involved in skin pigmentation (Kawauchi, Kawazoe, Tsubokawa, Kishida, & Baker, 1983), melanin concentrating hormone (MCH) in mammals has been found to be involved in a wide range of physiological processes including feeding behavior, energy homeostasis, sleep, anxiety, addiction, and reward (Monzon, Varas, & De Barioglio, 2001; Qu et al., 1996; Tyhon et al., 2006; Willie, Sinton, Maratos-Flier, & Yanagisawa, 2008). The neuropeptide ligand, MCH, is produced solely by neurons in the lateral hypothalamus and zona incerta (Bittencourt et al., 1992),

and in rodents acts on its only known G protein-coupled receptor, Mchr1, which is expressed in several regions throughout the brain (Saito, Cheng, Leslie, & Civelli, 2001).

One well-established phenotype of altered MCH or Mchr1 signaling is modulation of feeding behavior and energy homeostasis. Generally, overactivation of the pathway either pharmacologically or through genetic overexpression of MCH leads to an increase in food intake (Gomori et al., 2003; Ludwig et al., 1998, 2001; Qu et al., 1996; Rossi et al., 1997). In contrast, inactivation of the pathway through loss of ligand (Alon & Friedman, 2006; Shimada, Tritos, Lowell, Flier, & Maratos-Flier, 1998), receptor (Chen et al., 2002; Marsh et al., 2002), or antagonism leads to decreases in food intake and weight loss in rodents (Gennemark et al., 2017; Ito et al., 2010; Ploj et al., 2016; Shearman et al., 2003). Mchr1 is also expressed in the nucleus

The copyright line for this article was changed on 25 June 2019 after original online publication.

This is an open access article under the terms of the Creative Commons Attribution-NonCommercial License, which permits use, distribution and reproduction in any medium, provided the original work is properly cited and is not used for commercial purposes.

© 2018 The Authors. *Genesis* published by Wiley Periodicals, Inc.

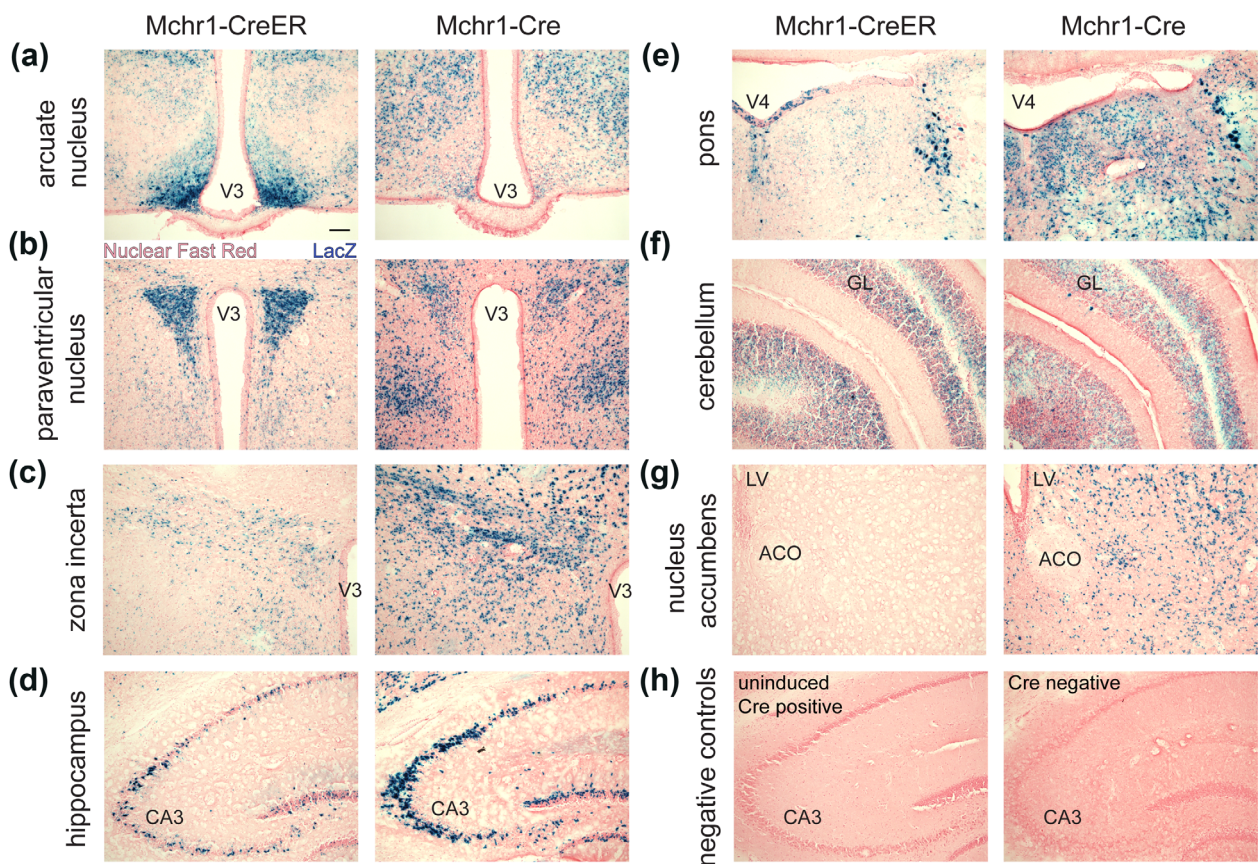
accumbens and has the ability to modulate the response to drugs of abuse like cocaine (Chung et al., 2009; Tyhon et al., 2006) and alcohol (Duncan et al., 2007; Karlsson et al., 2016). In addition, MCH pathway antagonism can decrease sleep (Ahnaou, Dautzenberg, Huysmans, Steckler, & Drinkenburg, 2011; Willie et al., 2008), while MCH pathway activation can facilitate memory (Monzon et al., 1999; Varas, Perez, Monzon, & de Barioglio, 2002) and has anxiolytic effects in animal models (Kela, Salmi, Rimondini-Giorgini, Heilig, & Wahlestedt, 2003; Monzon et al., 2001).

Here, we generated an inducible mouse Mchr1-CreER allele to assess the potential roles for Mchr1 signaling in neural development, as well as to have a means to acutely manipulate Mchr1 expressing neurons in adult animals.

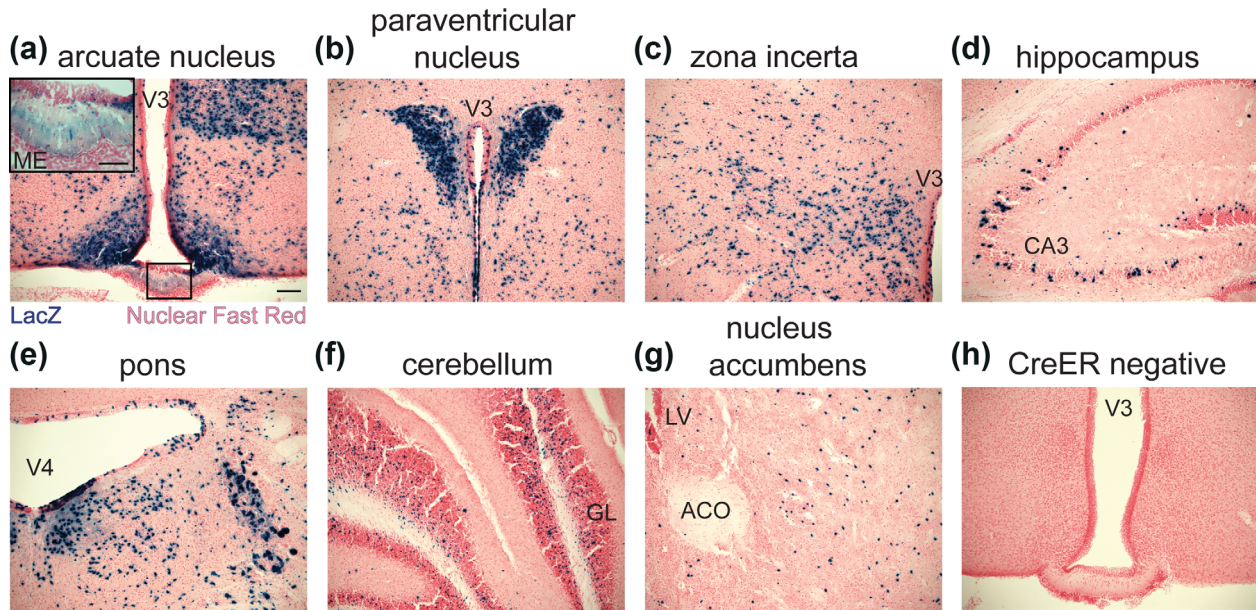
## 2 | RESULTS AND DISCUSSION

The same BAC transgenic strategy (Lee et al., 2001) that was employed to generate the constitutive Mchr1-Cre allele (Chee, Pissios, & Maratos-Flier, 2013) was used to create the inducible Mchr1-CreER allele (Supporting Information Figure S1). The transgene

positive founder Mchr1-CreER mice were crossed with ROSA<sup>LacZ</sup> Cre reporter mice (Supporting Information Figure S1) to assess inducibility and expression patterns. Offspring from founders #2 and #3 displayed active Cre with similar expression patterns (Figure 1; Supporting Information Figure S2). To assess adult neuronal populations expressing Mchr1-CreER activity, adult mice were induced with a five-day course of intraperitoneal injections of tamoxifen and then the reporter expression pattern in the brain was examined 3 days after the final injection. Table 1 summarizes the distribution and intensity of LacZ Cre reporter expression. Mchr1 expression was seen in several regions of the brain, most notably, the arcuate nucleus and the paraventricular nucleus of the hypothalamus (Figure 1a,b). No staining in whole mount peripheral tissues was observed (data not shown). The expression pattern of adult induced Mchr1-CreER was directly compared with constitutively active Mchr1-Cre using the same LacZ reporter. Overall, a broader expression pattern was observed in Mchr1-Cre brains. However, the expression pattern in many nuclei, such as the zona incerta (Figure 1c), hippocampus (Figure 1d), pons (Figure 1e), and cerebellum (Figure 1f) remained similar in both lines. Interestingly, there was a greater amount of LacZ reporter expression



**FIGURE 1** LacZ reporter activity in the brains of adult Mchr1-CreER and Mchr1-Cre mice. Representative images of Mchr1-CreER/ROSA<sup>LacZ</sup> brain sections (a-g, left column) compared to constitutive Mchr1-Cre/ROSA<sup>LacZ</sup> brain sections (a-g, right column). For Mchr1-CreER animals, adult induced activation of CreER was achieved via 5 days of tamoxifen injections starting when mice were 6 weeks old and brains were harvested when mice were 7 weeks old, 24–72 hr after the last tamoxifen injection. For Mchr1-Cre animals, brains were also harvested at 7 weeks old. 50  $\mu$ m brain sections were cut and stained for LacZ. Negative controls include a section from an uninduced Cre positive Mchr1-CreER mouse (h, left panel) and Cre negative Mchr1-Cre littermate (h, right panel). Neuroanatomical regions annotated include the third ventricle (V3), Cornu Ammonis 3 subfield of hippocampus (CA3), fourth ventricle (V4), granule layer (GL), anterior commissure (ACO), and lateral ventricle (LV). LacZ staining is in blue and nuclei were counter stained with nuclear fast red. Scale bar indicates 100  $\mu$ m. (induced Mchr1-CreER Cre positive  $n = 8$ ; induced Mchr1-CreER Cre negative (not shown)  $n = 8$ ; uninduced Mchr1-CreER Cre positive  $n = 2$ ; Mchr1-Cre Cre positive  $n = 6$ ; Mchr1-Cre Cre negative  $n = 2$ )



**FIGURE 2** Analysis of LacZ reporter activity in the brains of adult Mchr1-CreER mice after perinatal induction. Representative images of Mchr1-CreER/ROSA<sup>LacZ</sup> brain sections following Cre induction via a single tamoxifen injection at P0. Brains were harvested when mice were 7 weeks old and 50  $\mu$ m brain sections were cut and stained for LacZ. Inset in (a) shows magnification of region inside box. Negative control represents a Cre negative Mchr1-CreER littermate (h). Neuroanatomical regions annotated include the third ventricle (V3), Comu Ammonis 3 subfield of hippocampus (CA3), fourth ventricle (V4), granule layer (GL), anterior commissure (ACO), lateral ventricle (LV), and median eminence (ME). LacZ staining is in blue and nuclei were counter stained with nuclear fast red. Scale bar indicates 100  $\mu$ m, scale bar of inset indicates 10  $\mu$ m. (induced Mchr1CreER Cre positive  $n = 2$ , injected Mchr1-CreER Cre negative  $n = 2$ )

in the arcuate nucleus (Figure 1a) and paraventricular nucleus (Figure 1b) of adult induced Mchr1-CreER mice compared to Mchr1-Cre mice. Furthermore, expression was nearly undetectable in the nucleus accumbens of Mchr1-CreER mice but present in Mchr1-Cre mice (Figure 1g). No reporter activity was observed in the brains of uninduced Mchr1-CreER mice or Cre negative littermates of Mchr1-Cre mice (Figure 1h).

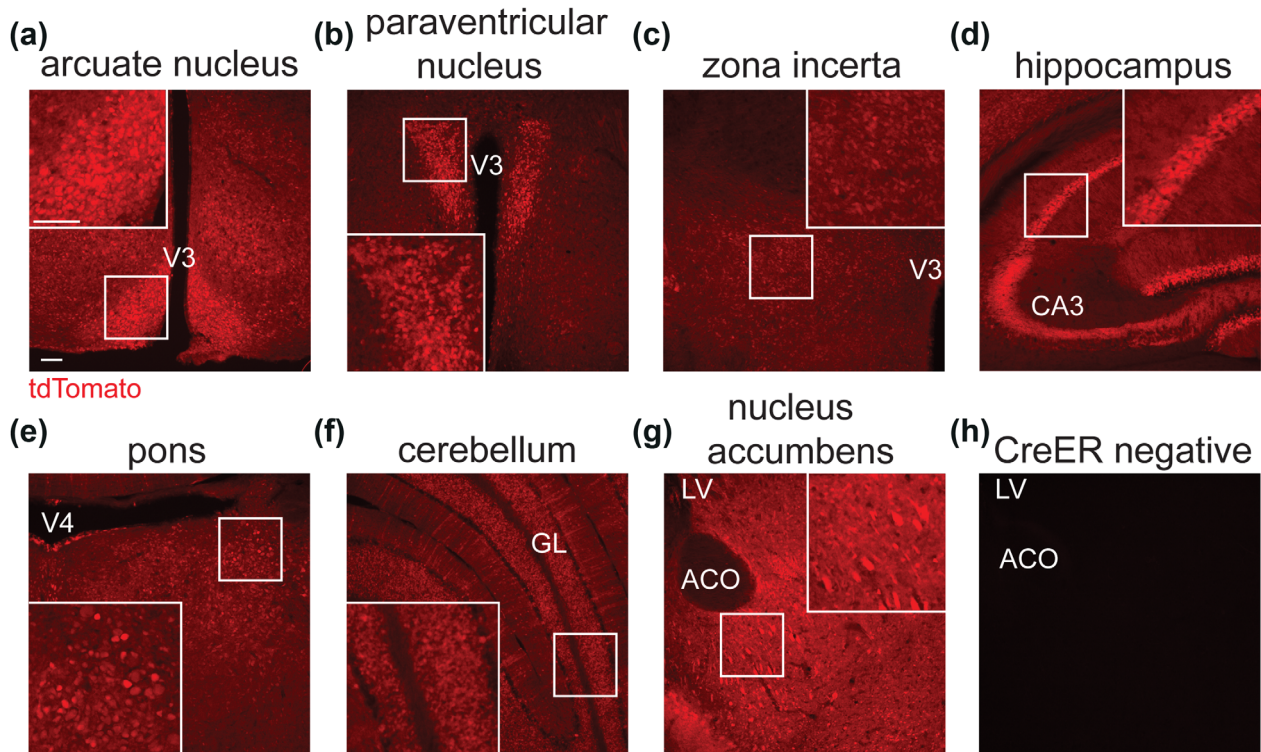
To assess whether differences in expression pattern of the ROSA<sup>LacZ</sup> reporter in Mchr1-CreER versus Mchr1-Cre mice may be due to changes in Mchr1 expression in perinatal development, we induced CreER activity at an earlier timepoint. On their day of birth, or postnatal day zero (P0), Mchr1-CreER mice were induced with a single tamoxifen injection followed by expression pattern analysis after they reached adulthood. The pattern of LacZ reporter present appeared similar to adult induced Mchr1-CreER mice (Figures 1 and 2) with one notable difference found in the nucleus accumbens. While not to the extent of Mchr1-Cre mice, expression was observed in the nucleus accumbens following P0 induction of Mchr1-CreER mice (Figures 1g and 2g), suggesting that perhaps expression of this receptor plays a role in early postnatal development of this brain region. Alternatively, expression levels may be lower in adult accumbens. Another difference found between the P0 and adult paradigm was staining observed in the median eminence (Figure 2a). These findings raise the possibility that there could be a critical developmental window in which Mchr1 is produced in certain brain regions transiently during development and defects in this process may lead to behavioral phenotypes in adult animals.

To confirm the expression pattern analysis observed in the LacZ reporter line we utilized another Cre reporter by crossing Mchr1-CreER

mice to a ROSA<sup>tdTomato</sup> reporter mouse line. Mchr1-CreER/ROSA<sup>tdTomato</sup> mice were induced as adults (Supporting Information Figure S1). TdTomato reporter expression was observed in similar regions as the LacZ reporter with one exception being strong tdTomato reporter expression in the nucleus accumbens (Figure 3). Variability in labeling between different Cre reporter lines has been observed in other studies (Padilla, Reef, & Zeltser, 2012). The discrepancy we observe could be due to either poor Cre recombination efficiency or poor ROSA26 locus expression in the nucleus accumbens for the LacZ line. These types of observations have previously been observed in the brain (Casper & McCarthy, 2006) and this variability highlights the importance of understanding the expression pattern of new alleles.

Finally, to verify that Mchr1-CreER was expressed in a pattern consistent with Mchr1 expression, we compared reporter activity to Mchr1 mRNA using *in situ* hybridization with Mchr1 specific probes (Figure 4, left and middle panels). All regions showing tdTomato reporter expression were positive for Mchr1 mRNA, however the cerebellum and pons showed minimal labeling (Figure 4e,f), suggesting that these may be ectopic areas of expression in the Mchr1-CreER allele. Similar observations were also reported and observed for the Mchr1-Cre allele (Chee et al., 2013). A probe for a non-mammalian gene (dihydrodipicolinate reductase, DapB) was used as a negative control (Figure 4a–g, right panels). A probe for a common housekeeping gene (Peptidylprolyl Isomerase B, PPIB) was used as a positive control probe and produced labeling throughout the brain, including the corpus callosum, a region not labeled by the Mchr1 probe (Figure 4h) and where no reporter staining was noted in either Mchr1-CreER or Mchr1-Cre mice.

In conclusion, the new Mchr1-CreER allele's inducible recombinase activity can be observed in several brain regions consistent with



**FIGURE 3** Analysis of tdTomato reporter expression in adult Mchr1-CreER mice. Representative images of Mchr1-CreER/ROSA<sup>tdTomato</sup> brain sections following adult induced activation of CreER via 5 days of tamoxifen injections starting when mice were 6 weeks old. Brains were harvested when mice were 7 weeks old, 24–72 hr after the last tamoxifen injection. 50  $\mu$ m brain sections were cut and analyzed for tdTomato expression. Inset is a magnified image of the annotated box. Negative control represents a Cre negative Mchr1-CreER littermate (h). Neuroanatomical regions annotated include the third ventricle (V3), Cornu Ammonis 3 subfield of hippocampus (CA3), fourth ventricle (V4), granule layer (GL), anterior commissure (ACO), and lateral ventricle (LV). TdTomato expression is in red. Scale bars indicate 100  $\mu$ m. (induced Mchr1-CreER Cre positive  $n = 5$ ; induced Mchr1-CreER Cre negative  $n = 1$ )

behavioral phenotypes associated with the pathway and expression pattern data. For the first time, we report novel brain regions showing Cre activity when induced on the day of birth, suggesting the potential for this pathway to be involved in neural development. Furthermore, these results suggest that some behavioral phenotypes observed in constitutive knockout and transgenic alleles of MCH or Mchr1 may be due to developmental perturbations in signaling. This model will be useful to determine both adult and developmental contributions to the diverse set of behavioral phenotypes associated with Mchr1 signaling.

### 3 | METHODS

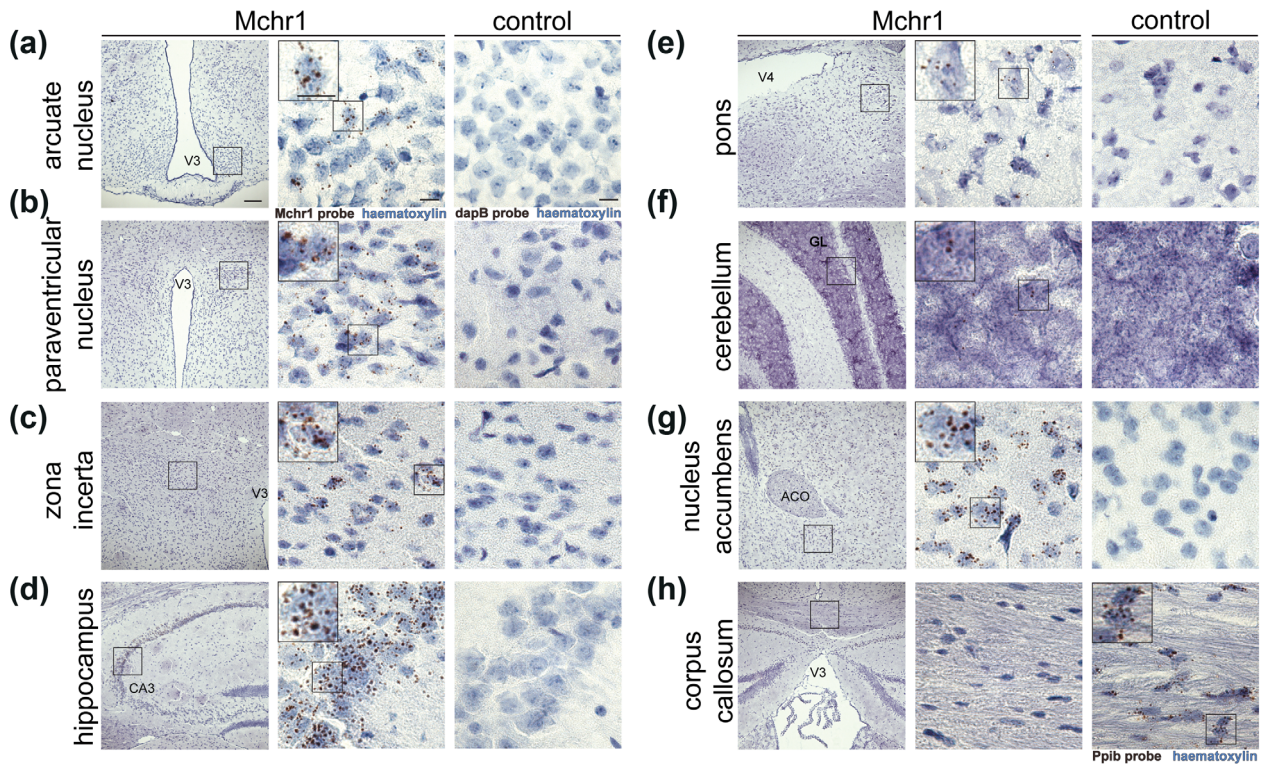
#### 3.1 | Transgene construct and mouse allele generation

To produce the Mchr1-CreER transgene construct, the ~198 kb C57BL/6J mouse BAC clone (RP23-202N16) containing ~108 kb upstream of the Mchr1 open reading frame and ~86 kb after the stop codon was used. The CreER<sup>T2</sup> open reading frame was inserted downstream of the Mchr1 promoter via homologous recombination/BAC recombineering as previously described (Lee et al., 2001), replacing nucleotides 4–41 from exon 1 of the Mchr1 gene. The targeting construct was generated using the following primers:

5'-GCAGCCTGCGTGGGTGGACGGGCGCTCCACTCCAGGGAGCAG-GCGACCTGCACCGGCTGCATGTCCAATTTACTGACCGT and 5'-GGA-CTCCAACCTCGACTCACCCGCCAATGTGAAATTATCCTGGCCATCGGA-GATGTTGCTGCCGCGTGTAGGCTGGAGCTG. An frt-flanked kanamycin selection cassette used during recombineering was removed by FLP expression. Proper recombination was confirmed by sequencing. The BAC was purified for subsequent male pronuclear injection. Mice were genotyped for Mchr1-CreER using 5'-GCAAACGGACAGAAGCATT and 5'-GCGGTAGAGGAAGACCCTTT primers in the following PCR program: 95°C for 2 min; 35 cycles of 95°C for 15 seconds, 57°C for 30 seconds, and 72°C for 1 min; 72°C for 1 min. The resulting founder lines were maintained as hemizygotes for the Mchr1-CreER BAC transgene. As such it is unknown if there are any phenotypes associated with mice homozygous for the Mchr1-CreER BAC transgene. The new Mchr1-CreER mouse will be available upon request.

#### 3.2 | Mice

All procedures were approved by the Institutional Animal Care and Use Committee at Indiana University Purdue University Indianapolis. Mice were housed on a standard 12-hour light dark cycle and given food and water ad libitum. Mice were weaned and housed with same-sex littermates after postnatal day 21. Ear punches were taken for genotype analysis by polymerase chain reaction.



**FIGURE 4** *In Situ* Hybridization for Mchr1 in adult mouse brain. Representative images of brain sections from adult wild-type mice following *in situ* hybridization using a Mchr1 specific probe (a-h, left and middle columns; middle panel represents a magnified image of the annotated box, insets in the middle column are from individual cells in that panel). A dapB probe was used as a negative control (a-g, right column) and a Ppib probe was used as a positive control probe (h, right). Neuroanatomical regions annotated include the third ventricle (V3), Cornu Ammonis 3 subfield of hippocampus (CA3), fourth ventricle (V4), granule layer (GL), anterior commissure (ACO), and lateral ventricle (LV). Probe staining in brown with haematoxylin counter stain. Scale bar in left column indicates 100  $\mu$ m, scale bars in middle and right column indicate 10  $\mu$ m. ( $n = 3$ )

Mchr1-CreER founders were compared to Mchr1-Cre mice (C57BL/6J-Tg(Mchr1-cre)1Emf/J, stock number 021582). Both Mchr1-CreER and Mchr1-Cre mice were crossed to Cre reporter lines, ROSA<sup>LacZ</sup> (Gt(ROSA)26Sortm1Sor/J, stock number 003309 | R26R) or tdTomato (Gt(ROSA)26Sor<sup>tm9(CAG-tdTomato)Hze</sup>/J, stock number 007909) (Jackson Labs; Bar Harbor, ME). Both ROSA<sup>LacZ</sup> and ROSA<sup>tdTomato</sup> only express the reporter upon Cre mediated recombination. Two founders showed robust reporter expression and were further characterized. Experiments utilized both male and female mice and no differences between sexes were noted.

### 3.3 | CreER induction

To induce CreER recombinase, cohorts were given intraperitoneal injections of 20 mg/ml tamoxifen (Sigma Aldrich, St. Louis, MO) dissolved in corn oil (Sigma Aldrich, St. Louis, MO). For adult induction, six-week old cohorts were given injections on 5 consecutive days at a dose of 150 mg/kg. For induction at P0, mice were given a single 50  $\mu$ L injection.

### 3.4 | Fixation and tissue processing for LacZ staining

Samples were harvested when mice were 7 weeks old, 24-72 hr after the final tamoxifen injection for adult induced cohorts or 7 weeks after tamoxifen injection for P0 induced cohorts. Mice were anesthetized with 0.1 ml/10 g of body weight dose of 2.0%

tribromoethanol (Sigma Aldrich, St. Louis, MO) and transcardially perfused with PBS followed by 4% paraformaldehyde (Affymetrix Inc., Cleveland, OH). Brains were postfixed in 4% paraformaldehyde for 4 hr at 4°C and then cryoprotected by submersion in 30% sucrose in PBS for 16-24 hr. Cryoprotected brains were embedded in Optimal Cutting Temperature compound (Fisher Healthcare, Houston, TX) and sectioned in a freezing cryostat at a thickness of 50  $\mu$ m.

LacZ staining was performed as previously described (Berbari et al., 2011). Sections were washed twice in PBS prior to three 10-minute washes in LacZ wash buffer (2 mM MgCl<sub>2</sub>, 0.01% sodium deoxycholate, 0.02% nonidet-P40 in 100 mM sodium phosphate buffer, pH 7.3). Following washes, sections were incubated overnight at 37°C in LacZ stain (2 mM MgCl<sub>2</sub>, 5 mM K-ferrocyanide, 5 mM K-ferricyanide, 2.45 mM x-Gal in PBS) Sections were then washed twice with PBS and mounted onto Superfrost Plus Microscope Slides (Fisher Scientific) prior to nuclear counterstaining.

Nuclear counterstaining was performed with Nuclear Fast Red. Slides were rinsed in MilliQ deionized water and then stained in 0.1% Nuclear fast red-aluminum sulfate solution (Merck, Darmstadt, Germany) for four to five minutes. Next, slides were washed with MilliQ deionized water and dehydrated through a series of ethanol and xylene washes (70% EtOH, 96% EtOH, 100% EtOH and xylene, 5 min each). Finally, the sections were coverslipped using Permount Mounting Media (Fisher Chemical, Pittsburg, PA).

**TABLE 1** Distribution of LacZ reporter expression

Brain Region	Relative abundance of LacZ reporter		
	Mchr1-creER adult induced	PO induced	Mchr1-cre constitutive
Cerebral cortex			
Isocortex	+	+	++
Olfactory areas	+	+	++
Hippocampus			
CA1 pyramidal cell layer	++	+	++
CA2 pyramidal cell layer	+++	++	+++
CA3 pyramidal cell layer	+++	++	+++
Dentate gyrus granule cell layer	++	+	++
Striatum			
Caudoputamen	+/-	+	+++
Globus pallidus	+/-	+/-	+
Nucleus accumbens	+/-	+	++
Thalamus	+/-	+/-	++
Hypothalamus			
Arucate nucleus	+++	+++	+
Paraventricular nucleus	+++	+++	+
Median eminence	-	+	-
Zona incerta	+	+	+
Ventromedial nucleus	+/-	+/-	++
Dorsomedial nucleus	++	++	++
Lateral hypothalamic area	+	+	+
Periventricular hypothalamic nucleus	++	+	+
Mammillary nucleus			
Supramammillary nucleus	+	+	+/-
Medial mammillary nucleus	-	+/-	++
Lateral mammillary nucleus	+/-	+/-	++
Midbrain			
Ventral tegmental area	+	+	++
Substantia nigra	-	+	++
Periaqueductal gray	+/-	+	++
Interpeduncular nucleus	+/-	+	+/-
Pons and Medulla			
Dorsal tegmental nucleus	++	++	++
Laterodorsal tegmental nucleus	+	+	++
Locus ceruleus	++	++	++
Motor nucleus	++	++	++
Facial motor nucleus	++	++	++
Cerebellum			
Granule layer	++	++	++
Molecular layer	-	-	-
The relative amount of LacZ reporter in each brain region designated by:			
-, no LacZ reporter expression			
+/-, sparse LacZ reporter expression			
+, low density of LacZ reporter expression			
++, moderate density of LacZ reporter expression			
+++, high density of LacZ reporter expression			

### 3.5 | Fixation and tissue processing for tdTomato

Brains were harvested when mice were 7 weeks old, 24–72 hr after the final tamoxifen injection. Mice were anesthetized by a 0.1 ml/10 g of body weight by i.p. injection of 2.0% tribromoethanol (Sigma Aldrich, St. Louis, MO) and transcardially perfused with PBS followed by a 1:1 mixture of 4% paraformaldehyde (Affymetrix Inc., Cleveland, OH) and Histochoice (Sigma Aldrich, St. Louis, MO). Brains were post-fixed in paraformaldehyde/histochoice overnight at 4°C and then cryoprotected by submersion in 30% sucrose in PBS for 16–24 hr. Cryoprotected brains were embedded in Optimal Cutting Temperature compound (Fisher Healthcare, Houston, TX) and sectioned in a freezing cryostat at a thickness of 50 µm. Sections were stained with Hoechst nuclear stain (1:1,000 in PBS) for 5 min at room temperature, washed with PBS, mounted onto slides, and coverslipped with Fluoro-Gel (Electron Microscopy Sciences, Harfield, PA).

### 3.6 | In situ hybridization

Brains from C57BL/6J mice were harvested and fixed as described for LacZ staining. Sections were cut at a thickness of 15 µm and mounted directly on slides then post-fixed with 4% paraformaldehyde for 16 hr at 4°C.

Detection of transcripts in brain sections was performed using the RNAscope 2.5 HD Assay – BROWN kit (ACD). Tissue pretreatment was performed according to user manual no. 320534 and probe hybridization, counterstaining, and mounting of slides was performed according to user manual no. 322310-USM. Slides were assayed using probes to either positive control (Ppib), negative control (dapb), or MCHR1 transcripts (ACD). Sections were counterstained with Hematoxylin, dehydrated, and mounted using Cytoseal (Thermo Scientific).

### 3.7 | Imaging

All samples were imaged using a Nikon Eclipse 90i microscope with Nikon Elements Advanced Research software v4.13.

### ACKNOWLEDGMENTS

The authors would like to thank the UAB Transgenic & Genetically Engineered Models (TGEMS) facility for creating the inducible Mchr1-CreER allele, Troy Masters for technical assistance and Benjamin Perrin and Lata Balakrishnan for critical reading of the manuscript.

National Institute of Diabetes and Digestive and Kidney Diseases, P30 DK05336, P30 DK074038, P30 DK097512, P60 DK079626, R01 DK114008; National Institutes of Health, P30 AR048311, P30 CA13148

### DISCLOSURES

None.

### ORCID

Nicolas F. Berbari  <https://orcid.org/0000-0003-2863-1069>

## REFERENCES

- Ahnaou, A., Dautzenberg, F. M., Huysmans, H., Steckler, T., & Drinkenburg, W. H. (2011). Contribution of melanin-concentrating hormone (MCH1) receptor to thermoregulation and sleep stabilization: Evidence from MCH1 (-/-) mice. *Behavioural Brain Research*, 218, 42–50.
- Alon, T., & Friedman, J. M. (2006). Late-onset leanness in mice with targeted ablation of melanin concentrating hormone neurons. *Journal of Neuroscience*, 26, 389–397.
- Berbari, N. F., Kin, N. W., Sharma, N., Michaud, E. J., Kesterson, R. A., & Yoder, B. K. (2011). Mutations in *Traf3ip1* reveal defects in ciliogenesis, embryonic development, and altered cell size regulation. *Developmental Biology*, 360, 66–76.
- Bittencourt, J. C., Presse, F., Arias, C., Peto, C., Vaughan, J., Nahon, J.-L., ... Sawchenko, P. E. (1992). The melanin-concentrating hormone system of the rat brain: An immuno- and hybridization histochemical characterization. *The Journal of Comparative Neurology*, 319, 218–245.
- Casper, K. B., & McCarthy, K. D. (2006). GFAP-positive progenitor cells produce neurons and oligodendrocytes throughout the CNS. *Molecular and Cellular Neuroscience*, 31, 676–684.
- Chee, M. J., Pissios, P., & Maratos-Flier, E. (2013). Neurochemical characterization of neurons expressing melanin-concentrating hormone receptor 1 in the mouse hypothalamus. *Journal of Comparative Neurology*, 521, 2208–2234.
- Chen, Y., Hu, C., Hsu, C.-K., Zhang, Q., Bi, C., Asnicar, M., ... Shi, Y. (2002). Targeted disruption of the melanin-concentrating hormone receptor-1 results in hyperphagia and resistance to diet-induced obesity. *Endocrinology*, 143, 2469–2477.
- Chung, S., Hopf, F. W., Nagasaki, H., Li, C. Y., Belluzzi, J. D., Bonci, A., & Civelli, O. (2009). The melanin-concentrating hormone system modulates cocaine reward. *Proceedings of the National Academy of Sciences of the United States of America*, 106, 6772–6777.
- Duncan, E. A., Sorrell, J. E., Adamantidis, A., Rider, T., Jandacek, R. J., Seeley, R. J., ... Woods, S. C. (2007). Alcohol drinking in MCH receptor-1-deficient mice. *Alcohol. Alcoholism: Clinical and Experimental Research*, 31, 1325–1337.
- Gennemark, P., Trägårdh, M., Lindén, D., Ploj, K., Johansson, A., Turnbull, A., ... Antonsson, M. (2017). Translational modeling to guide study design and dose choice in obesity exemplified by AZD1979, a Melanin-concentrating Hormone Receptor 1 Antagonist. *CPT: Pharmacometrics & Systems Pharmacology*, 6, 458–468.
- Gomori, A., Ishihara, A., Ito, M., Mashiko, S., Matsushita, H., Yumoto, M., ... Kanatani, A. (2003). Chronic intracerebroventricular infusion of MCH causes obesity in mice. Melanin-concentrating hormone. *American Journal of Physiology-Endocrinology and Metabolism*, 284, E583–E588.
- Ito, M., Ishihara, A., Gomori, A., Matsushita, H., Ito, M., Metzger, J. M., ... Kanatani, A. (2010). Mechanism of the anti-obesity effects induced by a novel melanin-concentrating hormone 1-receptor antagonist in mice. *British Journal of Pharmacology*, 159, 374–383.
- Karlsson, C., Rehman, F., Damdazic, R., Atkins, A. L., Schank, J. R., Gehlert, D. R., ... Heilig, M. (2016). The melanin-concentrating hormone-1 receptor modulates alcohol-induced reward and DARPP-32 phosphorylation. *Psychopharmacology (Berl)*, 233, 2355–2363.
- Kawauchi, H., Kawazoe, I., Tsubokawa, M., Kishida, M., & Baker, B. I. (1983). Characterization of melanin-concentrating hormone in chum salmon pituitaries. *Nature*, 305, 321–323.
- Kela, J., Salmi, P., Rimondini-Giorgini, R., Heilig, M., & Wahlestedt, C. (2003). Behavioural analysis of melanin-concentrating hormone in rats: Evidence for orexigenic and anxiolytic properties. *Regulatory Peptides*, 114, 109–114.
- Lee, E.-C., Yu, D., Martinez de Velasco, J., Tessarollo, L., Swing, D. A., Court, D. L., ... Copeland, N. G. (2001). A highly efficient Escherichia coli-based chromosome engineering system adapted for recombinogenic targeting and subcloning of BAC DNA. *Genomics*, 73, 56–65.
- Ludwig, D. S., Mountjoy, K. G., Tatro, J. B., Gillette, J. A., Frederich, R. C., Flier, J. S., & Maratos-Flier, E. (1998). Melanin-concentrating hormone: A functional melanocortin antagonist in the hypothalamus. *American Journal of Physiology*, 274(Pt 1), E627–E633.
- Ludwig, D. S., Tritos, N. A., Mastaitis, J. W., Kulkarni, R., Kokkotou, E., Elmquist, J., ... Maratos-Flier, E. (2001). Melanin-concentrating hormone overexpression in transgenic mice leads to obesity and insulin resistance. *Journal of Clinical Investigation*, 107, 379–386.
- Marsh, D. J., Weingarth, D. T., Novi, D. E., Chen, H. Y., Trumbauer, M. E., Chen, A. S., ... Qian, S. (2002). Melanin-concentrating hormone 1 receptor-deficient mice are lean, hyperactive, and hyperphagic and have altered metabolism. *Proceedings of the National Academy of Sciences of the United States of America*, 99, 3240–3245.
- Monzon, M. E., de Souza, M. M., Izquierdo, L. A., Izquierdo, I., Barros, D. M., & de Barioglio, S. R. (1999). Melanin-concentrating hormone (MCH) modifies memory retention in rats. *Peptides*, 20, 1517–1519.
- Monzon, M. E., Varas, M. M., & De Barioglio, S. R. (2001). Anxiogenesis induced by nitric oxide synthase inhibition and anxiolytic effect of melanin-concentrating hormone (MCH) in rat brain. *Peptides*, 22, 1043–1047.
- Padilla, S. L., Reef, D., & Zeltser, L. M. (2012). Defining POMC neurons using transgenic reagents: Impact of transient *Pomc* expression in diverse immature neuronal populations. *Endocrinology*, 153, 1219–1231.
- Ploj, K., Benthem, L., Kakol-Palm, D., Gennemark, P., Andersson, L., Bjursell, M., ... Lindén, D. (2016). Effects of a novel potent melanin-concentrating hormone receptor 1 antagonist, AZD1979, on body weight homeostasis in mice and dogs. *British Journal of Pharmacology*, 173, 2739–2751.
- Qu, D., Ludwig, D. S., Gammeltoft, S., Piper, M., Pellemounter, M. A., Cullen, M. J., ... Maratos-Flier, E. (1996). A role for melanin-concentrating hormone in the central regulation of feeding behaviour. *Nature*, 380, 243–247.
- Rossi, M., Choi, S. J., O'Shea, D., Miyoshi, T., Ghatei, M. A., & Bloom, S. R. (1997). Melanin-concentrating hormone acutely stimulates feeding, but chronic administration has no effect on body weight. *Endocrinology*, 138, 351–355.
- Saito, Y., Cheng, M., Leslie, F. M., & Civelli, O. (2001). Expression of the melanin-concentrating hormone (MCH) receptor mRNA in the rat brain. *The Journal of Comparative Neurology*, 435, 26–40.
- Shearman, L. P., Camacho, R. E., Sloan Stribling, D., Zhou, D., Bednarek, M. A., Hreniuk, D. L., ... Strack, A. M. (2003). Chronic MCH-1 receptor modulation alters appetite, body weight and adiposity in rats. *European Journal of Pharmacology*, 475, 37–47.
- Shimada, M., Tritos, N. A., Lowell, B. B., Flier, J. S., & Maratos-Flier, E. (1998). Mice lacking melanin-concentrating hormone are hypophagic and lean. *Nature*, 396, 670–674. <https://doi.org/10.1038/25341>
- Tybon, A., Adamantidis, A., Foidart, A., Grisar, T., Lakaye, B., & Tirelli, E. (2006). Mice lacking the melanin-concentrating hormone receptor-1 exhibit an atypical psychomotor susceptibility to cocaine and no conditioned cocaine response. *Behavioural Brain Research*, 173, 94–103.
- Varas, M., Perez, M., Monzon, M. E., & de Barioglio, S. R. (2002). Melanin-concentrating hormone, hippocampal nitric oxide levels and memory retention. *Peptides*, 23, 2213–2221.
- Willie, J. T., Sinton, C. M., Maratos-Flier, E., & Yanagisawa, M. (2008). Abnormal response of melanin-concentrating hormone deficient mice to fasting: Hyperactivity and rapid eye movement sleep suppression. *Neuroscience*, 156, 819–829.

## SUPPORTING INFORMATION

Additional supporting information may be found online in the Supporting Information section at the end of the article.

**How to cite this article:** Engle SE, Antonellis PJ, Whitehouse LS, et al. A CreER mouse to study melanin concentrating hormone signaling in the developing brain. *genesis*. 2018;56:e23217. <https://doi.org/10.1002/dvg.23217>