

# Atrial septal defect closure: indications and contra-indications

Alain Fraisse<sup>1</sup>, Monica Latchman<sup>1</sup>, Shiv-Raj Sharma<sup>1</sup>, Selin Bayburt<sup>2</sup>, Pascal Amedro<sup>3</sup>, Giovanni di Salvo<sup>1</sup>, Alban Elouen Baruteau<sup>4</sup>

<sup>1</sup>Royal Brompton & Harefield NHS Foundation Trust, London, UK; <sup>2</sup>Acibadem University, School of Medicine, Acibadem Universitesi Kerem Aydınlar Kampüsü, Ataşehir, Istanbul, Turkey; <sup>3</sup>Department of Paediatric Cardiology, CHU de Montpellier, Montpellier, France; <sup>4</sup>L'institut du thorax, INSERM, CNRS, UNIV Nantes, CHU Nantes, Nantes, France

*Contributions:* (I) Conception and design: A Fraisse, AE Baruteau; (II) Administrative support: A Fraisse, AE Baruteau; (III) Provision of study materials or patients: A Fraisse, AE Baruteau, M Latchman, SR Sharma, S Bayburt, G di Salvo; (IV) Collection and assembly of data: A Fraisse, AE Baruteau, M Latchman, SR Sharma, S Bayburt; (V) Data analysis and interpretation: All authors; (VI) Manuscript writing: All authors; (VII) Final approval of manuscript: All authors.

*Correspondence to:* Alain Fraisse, MD, PhD. Royal Brompton & Harefield NHS Foundation Trust, Sydney Street, London, SW3 6NP, UK.

Email: A.Fraisse@rbht.nhs.uk.

**Abstract:** Transcatheter closure has become an accepted alternative to surgical repair for ostium secundum atrial septal defects (ASD). However, large ASDs (>38 mm) and defects with deficient rims are usually not offered transcatheter closure but are referred for surgical closure. Transcatheter closure also remains controversial for other complicated ASDs with comorbidities, additional cardiac features and in small children. This article not only provides a comprehensive, up-to-date description of the current indications and contra-indications for ASD device closure, but also further explores the current limits for transcatheter closure in controversial cases. With the devices and technology currently available, several cohort studies have reported successful percutaneous closure in the above-mentioned complex cases. However the feasibility and safety of transcatheter technique needs to be confirmed through larger studies and longer follow-up.

**Keywords:** Atrial septal defect (ASD); cardiac catheterisation; closure

Submitted Mar 02, 2018. Accepted for publication Aug 29, 2018.

doi: 10.21037/jtd.2018.08.111

View this article at: <http://dx.doi.org/10.21037/jtd.2018.08.111>

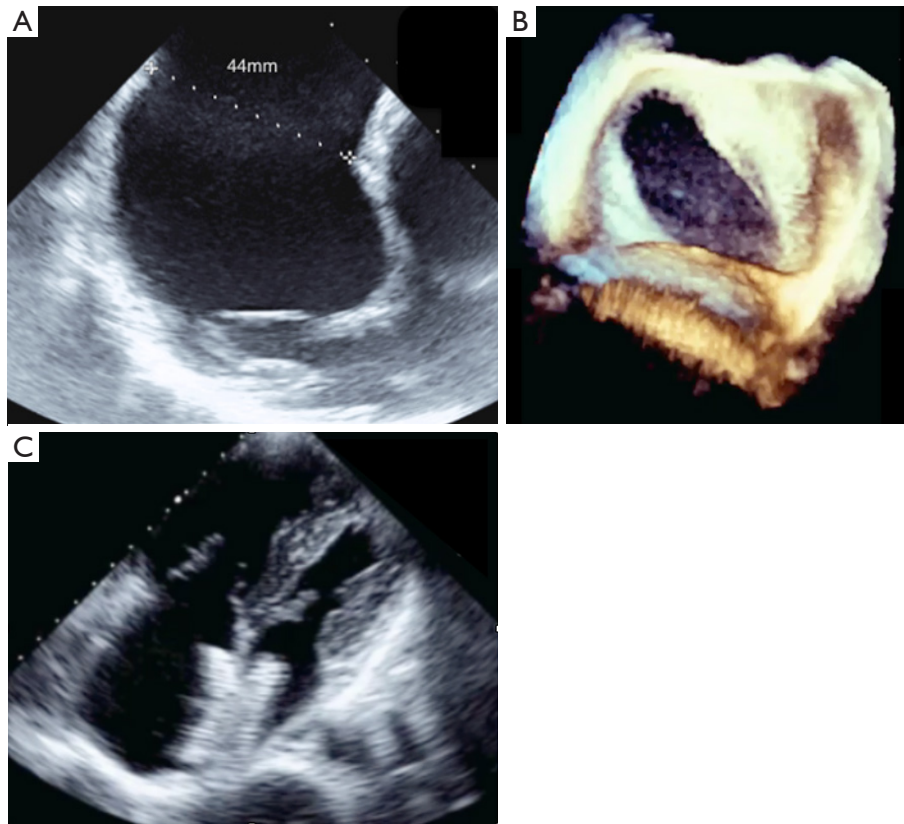
## Introduction

Since its first attempt in 1976 by Mills and King (1), transcatheter closure has become an accepted alternative to surgical repair for ostium secundum atrial septal defects (ASDs) (2). The technique is commonly offered as first intention treatment. Safe and effective closure is achieved in at least 80% of the unselected ASD population. Complex ASD, which is usually defined as defects >38 mm in diameter and/or deficient rims other than antero-superior, are often not considered amenable to transcatheter closure and referred for surgery (3). However, other criteria such as low age/weight, multiple defects, comorbidities and associated cardiac malformations may also contraindicate device closure. This article reviews our experience and provides a comprehensive, up-to-date description of the

current literature to better define indications and contra-indications for device closure of ASDs.

## Consensually agreed indications and imaging guidance for closure

ASD closure is indicated in the presence of a significant left-to-right shunt, defined by a significant right heart enlargement due to volume overload, regardless of symptoms (3,4). Descriptions of percutaneous device closure of a secundum ASD have been extensively reported in other articles and will therefore not be detailed in this paper. After transoesophageal echocardiography under general anaesthesia was the exclusive imaging method for more than 10 years, recent innovations are now towards imaging guidance modalities. Intracardiac echocardiography (5),



**Figure 1** Transcatheter closure of a very large oval atrial septal defect. (A) Very large atrial septal defect with maximum diameter measured at 44 mm on transoesophageal echocardiography; (B) 3D reconstruction demonstrates the crescent shape of the defect with a much smaller transverse diameter; (C) transthoracic echocardiography in 4-chambers view shows good position of the device after successful closure with a 40 mm Amplatzer ASO. ASO, Amplatzer septal occluder.

and more recently transthoracic echocardiography (6), have been introduced as acceptable alternative imaging guidance methods. They both carry the advantage of obviating the need for general anaesthesia.

Small defects with no right ventricular volume overload are not considered for closure, unless there is evidence of right-to-left shunting causing significant hypoxaemia and/or paradoxical embolism (4).

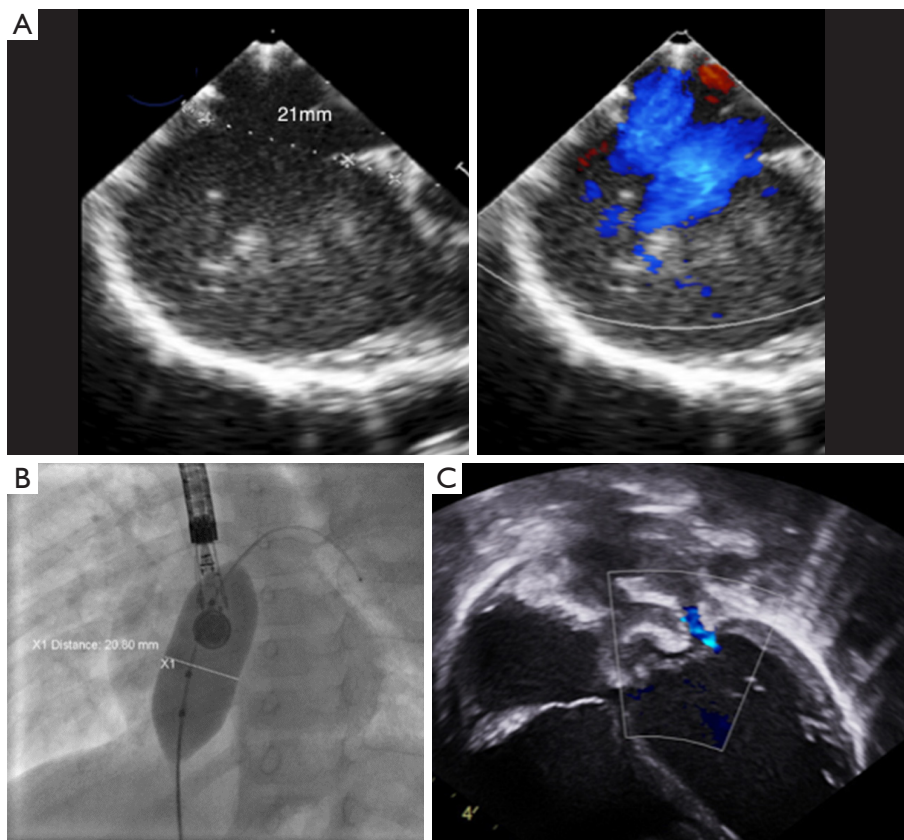
### Haemodynamic contra indications for ASD closure

Closure of an ASD should not be performed in cases with pulmonary vascular resistances  $>8$  Wood units. Patients with a pulmonary artery pressure less than two-thirds of systemic arterial pressure, pulmonary vascular resistance less than two-thirds of systemic resistance, or a positive response to pulmonary vasodilator testing can be considered for ASD closure (4). A fenestrated device may be considered in this

patient group (7).

### Defect size and deficient rims

Numerous cohort studies have reported the feasibility of transcatheter closure in complex cases, sometimes using a variety of modified implantation techniques such as the balloon-assisted technique (6,8-15). Secundum ASDs  $>38$  mm have been reported to be suitable for transcatheter closure by experienced operators (6,8,13,14). A key point is to understand that the concept of using the diameter of the defect to choose the appropriate device size is wrong because ASDs usually are not round. A single ASD dimension is reported in most studies, although this clearly does not reflect the true ASD shape or area. Because any measured diameter usually reflects the maximal diameter of the defect, an oval ASD measuring for example 43 or 44 mm in its long axis could be suitable for transcatheter closure if the short axis diameter is much smaller (*Figure 1*).



**Figure 2** Large atrial septal defect that is measured at 21 mm on transesophageal echocardiography (A) in a 9.7 kg, 11-month-old infant with failure to thrive. (B) The transesophageal echocardiography diameter is confirmed with the sizing balloon under fluoroscopy. After a 22 mm Amplatzer ASO is successfully implanted post-procedure transthoracic echocardiography in 4 chambers view confirms good position of the device and demonstrates a new mild mitral regurgitation that is functional, due to the sudden increase in left ventricular volume (C). This mild mitral regurgitation will disappear after a few weeks on follow-up echocardiography.

For small children weighing less than 20 kg, some authors are using a device/patient weight ratio and consider that transcatheter closure should not be performed if this ratio exceeds 1.5 (15). This does not reflect our experience, as we have routinely performed transcatheter device closure in small children with a device/weight ratio up to 2.3 (16), however, caution is needed. In a few cases, mild functional mitral regurgitation can occur in such patients with a large left-to-right interatrial shunt. In most cases this mitral regurgitation has a favourable outcome and is due to the sudden rapid change in volumes after removal of the left-to-right shunt (Figure 2). Three-dimensional echocardiography studies should better clarify the anatomical limits for device closure, as they use more accurate measurements such as the circular index of the ASD, which is defined as the ratio of the maximal diameter to the minimal diameter on the 3D-image (17,18). More recently, Wang et al outlined

the benefits in the use of 3D print models to identify the optimum device size in comparison to ASD defect (19).

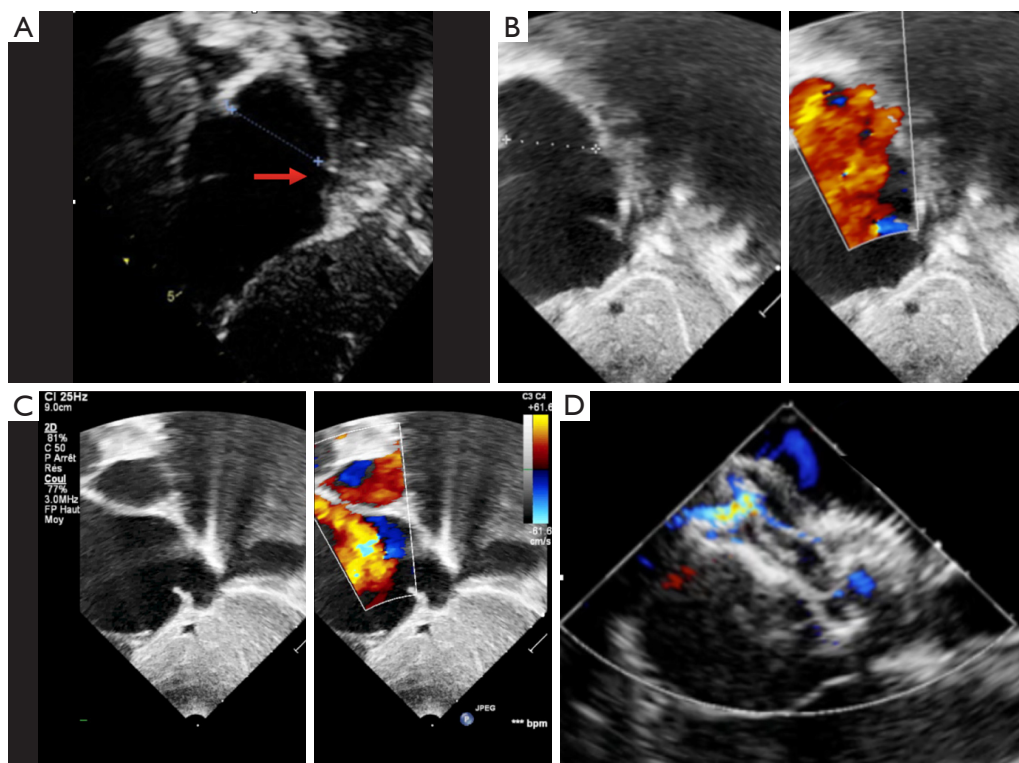
Complex cases also include defects with deficient rims (6,8-14,16). These defects are also usually suitable for transcatheter closure, the only exception being a deficient posteroinferior rim (towards the inferior vena cava). Indeed, even if a device can be deployed and well positioned in these cases, the risk of early device embolization is considerable, simply because the defect can easily slip toward the inferior vena cava. Device migration usually occurs immediately or a few hours after device implantation (Figure 3). In some cases, the device may stay stable but will potentially cause right-to-left shunt by straddling the inferior vena cava and then redirecting part of the blood flow through the left atrium. All the other secundum ASDs with deficient rims are usually amenable to transcatheter closure. In particular, defects with total deficiency of the posterior rim toward



**Figure 3** Intra-operative picture after device embolization in a 9-year-old child with moderate atrial septal defect showing the complete absence of tissue (arrow) between the inferior vena cava (where the inferior vena cava is cannulated) and the defect. The device was initially well-positioned but embolization probably occurred after the device slipped toward the inferior vena cava because of the absence of any rim.

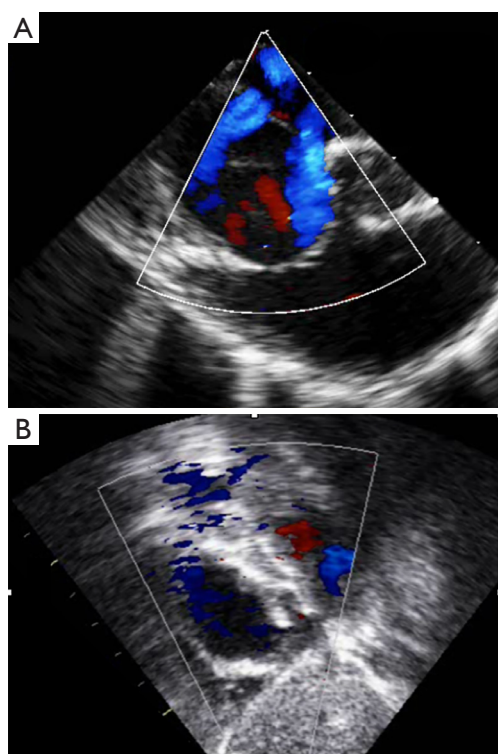
the pulmonary veins can be successfully closed most of the time. Importantly in these latter cases, balloon-assisted technique is often necessary because the left atrium is often small and the device may tend to prolapse through the defect (6,8). It is then important to differentiate deficiency of the posteroinferior rim from deficiency of the posterior rim alone, as the former is more at risk of embolization and residual right-to-left shunt, whereas the latter is suitable for device closure. Sub-costal view of transthoracic echocardiography usually provides adequate imaging for this (Figure 4).

Finally, some studies reported a risk of erosion with the Amplatzer septal occluder, especially in cases of either deficient antero-superior rim or oversized devices (20). However, the concept of oversizing a device is inaccurate because this is based on a single diameter that does not reflect the true area of the ASD, as already stated.



**Figure 4** Difference on echocardiography between postero inferior and posterior rim deficiency. (A) Subcostal view with transthoracic echocardiography shows very large atrial septal defect with complete posteroinferior rim deficiency toward the inferior vena cava (arrow). This child will be referred for surgery. (B) A subcostal view in another 14 kg child shows a very large defect with complete posterior rim deficiency. However subsequent subcostal view toward the inferior vena cava in (C) demonstrate a posteroinferior rim (arrow). This will successfully be closed with good position of the device under transoesophageal echocardiography (D).





**Figure 5** Transcatheter closure of an “octopus defect” mimicking multiple defects. (A) Transoesophageal echocardiography view showing multiple secundum atrial septal defects; (B) transthoracic echocardiography demonstrates successful closure of the defect with a single large device and no residual shunt.

Additionally, studies on erosion failed to consider that multiple attempts with more traumatic modified implantation methods such as deployment of the left atrial disk into the upper right and left pulmonary veins as well as complex intracardiac manipulations for successful device implantation might be used to close such defects. We believe that such modified implantation methods may traumatise the cardiac structures and that erosion may consequently occur after such manoeuvres. In this sense the modified balloon-assisted technique might be more appropriate because although an additional venous access is needed, it is much less traumatic (6,8).

### Complex anatomy

Multiple defects as well as aneurysmal interatrial septum are often referred for surgical closure (3,15). However, it has been shown that percutaneous closure is safe and feasible by experienced operators in cases of large septal aneurysm and/

or multifenestrated atrial septum (8,14). Also, it is important to recognize that a single defect may mimic multiple defects on some views, due to irregular borders extending like tentacles. In some views such extension of the defect can then be seen as multiple additional holes (*Figure 5*). These “octopus defects” can be suspected when a large main defect is seen surrounded by small additional defects. This can successfully be closed with a single device. Similarly, in cases of true multiple ASDs a single “cribriform” device often provides effective and complete closure (21). Three-dimensional echocardiography monitoring can be particularly useful, especially if multiple devices are positioned. In our experience, the more successful strategy is to use one ASD device to close the biggest defect, followed by another large cribriform type device to close the remaining defects (*Figure 6*) but this requires assessment on a case-by-case basis. Secundum ASDs can also occur with dextrocardia with or without situs inversus, in which case they remain amenable to transcatheter closure using the same criteria as for ASDs in situs solitus (*Figure 7*).

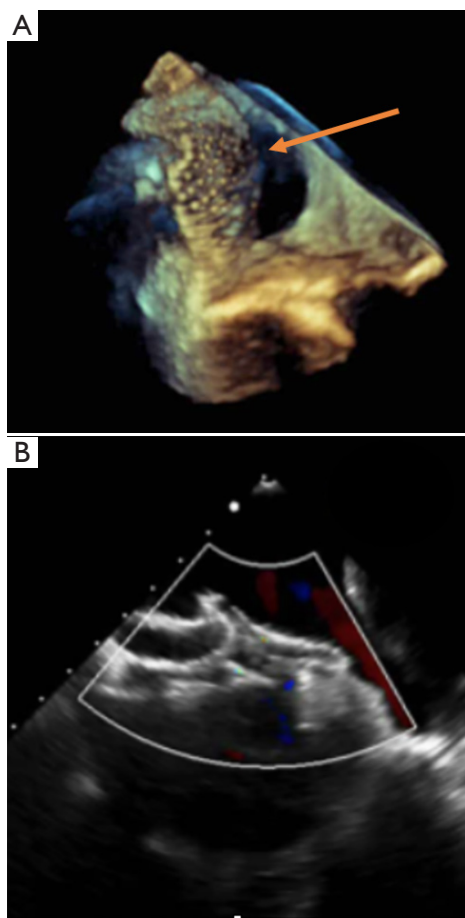
### Associated cardiac anomalies

Some ostium secundum ASDs associated with partial anomalous pulmonary drainage may be closed percutaneously if the remaining shunt remains negligible. This is particularly true for partial anomalous pulmonary return of the left upper pulmonary vein into the innominate vein. In patients with interrupted inferior vena cava and small-to-moderate ASD without deficient rim, transcatheter closure can be accomplished via the jugular vein and the SVC, using steerable sheaths. This is usually feasible in relatively small defects with adequate rims (22). Transhepatic route for closure of larger defects can also be used (*Figure 8*).

### Arrhythmias

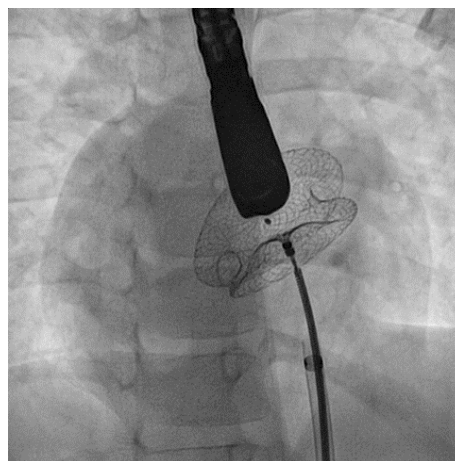
Atrial arrhythmia is the most common complication in the natural history of ASDs, which have not been closed. Atrial fibrillation is the most frequent arrhythmia before and after surgical closure of ASDs in adulthood, and increases with age at the time of repair (23). Atrial fibrillation or flutter may persist even after successful closure, especially when this is performed after 40 years of age (23,24).

A recent study on 235 patients undergoing Holter monitoring before procedure and at 1, 6 and 12 months of follow-up demonstrated that transcatheter

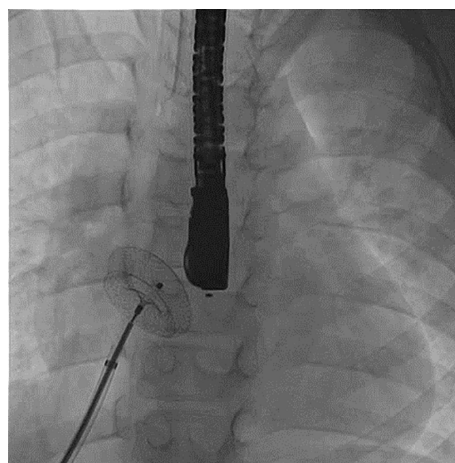


**Figure 6** Transcatheter closure of multiple atrial septal defect with 2 devices. (A) 3D reconstruction with transoesophageal echocardiography showing a residual defect after a 32 mm Amplatzer ASO has been positioned through the biggest atrial septal defect; (B) successful closure after implantation of a 30 mm Amplatzer cribriform device overlapping the original 32 mm ASO. ASO, Amplatzer septal occluder.

closure of ASD is associated with a transient increase in supraventricular premature beats, and a small risk of conduction abnormalities and paroxysmal atrial fibrillation during early follow-up. Transcatheter closure of ASDs does not reduce the incidence of arrhythmias that appear prior to ASD closure, and larger device size and longer procedure time are possibly associated with increased risk of supraventricular arrhythmias (25). All patients with symptoms consistent with potential arrhythmias should be referred for electrophysiology assessment prior to ASD closure, and assessed with at least a 24-hour Holter ECG monitoring. If indicated, any electrophysiology study +/-



**Figure 7** Fluoroscopy in left anterior oblique view showing closure of a large atrial septal defect in a patient with dextrocardia and situs inversus.



**Figure 8** Fluoroscopy in left anterior oblique view showing closure of an atrial septal defect through transhepatic access.

ablation must be performed before device implantation as this will make access to the left atrium more complicated afterwards, although still feasible.

### Low body weight

Historically, symptomatic children with a weight <15 kg with poor weight gain and failure to thrive were referred for surgery because devices were thought to be too large for implantation given the length of the interatrial septum. However, over the years the lower limit of weight restrictions in percutaneous device closure has

decreased. Safe and effective closure in patients weighing <15 kg has been demonstrated in multiple reports and is now used routinely in high-volume institutions (26-29). Interventional ASD closure in children weighing <10 kg and even 8 kg have also been reported with good outcomes, even with extracardiac co-morbidities like bronchopulmonary dysplasia in previously premature babies (27,28). Percutaneous closure in symptomatic children can be performed in small patients without significantly increased risk (26-28). However, in a recent French nationwide study on 1326 children who underwent ASD device closure at 9 tertiary institutions, there was a minimal rate of periprocedural complications and a favourable long-term outcome, especially with no death or cardiac erosion despite a substantial proportion of large defects. However, children <15 kg and those with large ASDs had a greater risk of complication (29).

### Defect type

Although device closure is now the first treatment strategy for secundum ASDs, other types of ASD are referred for surgery. However it should be highlighted that interventional correction of sinus venosus ASD with partial anomalous pulmonary venous drainage has been reported with encouraging results and is likely to develop more in the near future (30).

### Conclusions

Transcatheter closure of secundum ASD has replaced surgical closure in the vast majority of the cases. Recent advances with imaging and catheterization technique allow closure in larger defects, multiple defects, most cases with deficient rims, small patients and some other cases with complex anatomy that were previously contraindicated. However this is only supported by relatively small cohort studies. Larger studies and more follow up are mandatory to confirm such expansion of the current indications.

### Acknowledgements

None.

### Footnote

*Conflicts of Interest:* Alain Fraise is a consultant and proctor

for Abbott Inc. The other authors have no conflicts of interest to declare.

### References

1. Mills NL, King TD. Nonoperative closure of left-to-right shunts. *J Thorac Cardiovasc Surg* 1976;72:371-8.
2. Du ZD, Hijazi ZM, Kleinman CS, et al. Comparison between transcatheter and surgical closure of secundum atrial septal defect in children and adults: results of a multicenter nonrandomized trial. *J Am Coll Cardiol* 2002;39:1836-44.
3. Butera G, Romagnoli E, Carminati M, et al. Treatment of isolated secundum atrial septal defects: impact of age and defect morphology in 1,013 consecutive patients. *Am Heart J* 2008;156:706-12.
4. Warnes CA, Williams RG, Bashore TM, et al. ACC/AHA 2008 guidelines for the management of adults with congenital heart disease: a report of the American College of Cardiology/American Heart Association Task Force on Practice Guidelines (Writing Committee to Develop Guidelines on the Management of Adults With Congenital Heart Disease). Developed in Collaboration With the American Society of Echocardiography, Heart Rhythm Society, International Society for Adult Congenital Heart Disease, Society for Cardiovascular Angiography and Interventions, and Society of Thoracic Surgeons. *J Am Coll Cardiol* 2008;52:e143-e263.
5. Baruteau AE, Hascoët S, Fraise A. Transthoracic echocardiography is a safe alternative for assessment and guidance of transcatheter closure of secundum atrial septal defect in children. *J Thorac Dis* 2017;9:1247-56.
6. Assaidi A, Sumian M, Mauri L, et al. Transcatheter closure of complex atrial septal defects is efficient under intracardiac echocardiographic guidance. *Arch Cardiovasc Dis* 2014;107:646-53.
7. Gonzalez-Barlatay F, Fournier A, Raboisson MJ, et al. Atrial Septal Defect Closure with Occlutech® ASD Fenestrated Device in a Child with Severe Pulmonary Hypertension. *Pediatr Cardiol* 2017;38:202-5.
8. Kammache I, Mancini J, Ovaert C, et al. Feasibility of transcatheter closure in unselected patients with secundum atrial septal defect, using amplatzer devices and a modified sizing balloon technique. *Catheter Cardiovasc Interv* 2011;78:665-74.
9. Du ZD, Koenig P, Cao QL, et al. Comparison of transcatheter closure of secundum atrial septal defect using the Amplatzer septal occluder associated with deficient

- versus sufficient rims. *Am J Cardiol* 2002;90:865-9.
10. Thanopoulos BD, Dardas P, Ninios V, et al. Transcatheter closure of large atrial septal defects with deficient aortic or posterior rims using the "Greek maneuver". A multicenter study. *Int J Cardiol* 2013;168:3643-6.
  11. Papa M, Gaspardone A, Fragasso G, et al. Feasibility and safety of transcatheter closure of atrial septal defects with deficient posterior rim. *Catheter Cardiovasc Interv* 2013;81:1180-7.
  12. Dalvi B, Sheth K, Jain S, et al. Transcatheter closure of large atrial septal defects using 40 mm amplatzer septal occluder: Single group experience with short and intermediate term follow-up. *Catheter Cardiovasc Interv* 2017;89:1035-43.
  13. Baruteau AE, Petit J, Lambert V, et al. Transcatheter closure of large atrial septal defects: feasibility and safety in a large adult and pediatric population. *Circ Cardiovasc Interv* 2014;7:837-43.
  14. Pillai AA, Satheesh S, Pakkirisamy G, et al. Techniques and outcomes of transcatheter closure of complex atrial septal defects - single center experience *Indian Heart J* 2014;66:38-44.
  15. Ohno N, Chaturvedi R, Lee KJ, et al. Characteristics of secundum atrial septal defects not percutaneously closed. *Catheter Cardiovasc Interv* 2015;85:234-9.
  16. Houeijeh A, Hascoët S, Bouvaist H, et al. Transcatheter closure of large atrial septal defects (ASDs) in symptomatic children with device/weight ratio  $\geq 1.5$ . *Int J Cardiol* 2018;267:84-7.
  17. Seo JS, Song JM, Kim YH, et al. Effect of atrial septal defect shape evaluated using three-dimensional transesophageal echocardiography on size measurements for percutaneous closure. *J Am Soc Echocardiogr* 2012;25:1031-40.
  18. Hascoet S, Hadeed K, Marchal P, et al. The relation between atrial septal defect shape, diameter, and area using three-dimensional transoesophageal echocardiography and balloon sizing during percutaneous closure in children. *Eur Heart J Cardiovasc Imaging* 2015;16:747-55.
  19. Wang Z, Liu Y, Xu Y, et al. Three-dimensional printing-guided percutaneous transcatheter closure of secundum atrial septal defect with rim deficiency: First-in-human series. *Cardiol J* 2016;23:599-603.
  20. McElhinney DB, Quartermain MD, Kenny D, et al. Relative risk factors for cardiac erosion following Transcatheter closure of Atrial Septal defects: A case-control study. *Circulation* 2016;133:1738-46.
  21. Numan M, El Sisi A, Tofeig M, et al. Cribriform Amplatzer device closure of fenestrated atrial septal defects: feasibility and technical aspects. *Pediatr Cardiol* 2008;29:530-5.
  22. Dong HJ, Fan TB, Li B, et al. Transjugular closure of secundum atrial septal defects. *J Card Surg* 2017;32:151-3.
  23. Gatzoulis MA, Freeman MA, Siu SC, et al. Atrial arrhythmia after surgical closure of atrial septal defects in adults. *N Engl J Med* 1999;340:839-46.
  24. Mantovan R, Gatzoulis MA, Pedrocco A, et al. Supraventricular arrhythmia before and after surgical closure of atrial septal defects: spectrum, prognosis and management. *Europace* 2003;5:133-8.
  25. Komar M, Przewłocki T, Olszowska M, et al. Conduction abnormality and arrhythmia after transcatheter closure of atrial septal defect. *Circ J* 2014;78:2415-21.
  26. Fraisse A, Losay J, Bourlon F, et al. Efficiency of transcatheter closure of atrial septal defect in small (< 15 kg) and symptomatic children. *Cardiol Young* 2008;18:343-7.
  27. Wyss Y, Quandt D, Weber R, et al. Interventional Closure of Secundum Type Atrial Septal Defects in Infants Less Than 10 Kilograms: Indications and Procedural Outcome. *J Interv Cardiol* 2016;29:646-53.
  28. Bishnoi RN, Everett AD, Ringel RE, et al. Device closure of secundum atrial septal defects in infants weighing less than 8 Kg. *Pediatr Cardiol* 2014;35:1124-31.
  29. Jalal Z, Hascoët S, Gronier C, et al. Long-Term Outcomes After Percutaneous Closure of Ostium Secundum Atrial Septal Defect in the Young: A Nationwide Cohort Study. *JACC Cardiovasc Interv* 2018;11:795-804.
  30. Velasco Forte MN, Byrne N, Valverde I, et al. Interventional Correction of Sinus Venosus Atrial Septal Defect and Partial Anomalous Pulmonary Venous Drainage: Procedural Planning Using 3D Printed Models. *JACC Cardiovasc Imaging* 2018;11:275-8.

**Cite this article as:** Fraisse A, Latchman M, Sharma SR, Bayburt S, Amedro P, di Salvo G, Baruteau AE. Atrial septal defect closure: indications and contra-indications. *J Thorac Dis* 2018;10(Suppl 24):S2874-S2881. doi: 10.21037/jtd.2018.08.111