

A universal gene expression system for fungi

Anssi Rantasalo, Christopher P. Landowski, Joosu Kuivanen, Annakarin Korppoo, Lauri Reuter, Outi Koivistoinen, Mari Valkonen, Merja Penttilä, Jussi Jantti* and Dominik Mojzita*

VTT Technical Research Centre of Finland, Espoo, P.O. Box 1000, FI-02044 VTT, Finland

Received April 03, 2018; Revised May 29, 2018; Editorial Decision June 06, 2018; Accepted June 07, 2018

ABSTRACT

Biotechnological production of fuels, chemicals and proteins is dependent on efficient production systems, typically genetically engineered microorganisms. New genome editing methods are making it increasingly easy to introduce new genes and functionalities in a broad range of organisms. However, engineering of all these organisms is hampered by the lack of suitable gene expression tools. Here, we describe a synthetic expression system (SES) that is functional in a broad spectrum of fungal species without the need for host-dependent optimization. The SES consists of two expression cassettes, the first providing a weak, but constitutive level of a synthetic transcription factor (sTF), and the second enabling strong, at will tunable expression of the target gene via an sTF-dependent promoter. We validated the SES functionality in six yeast and two filamentous fungi species in which high (levels beyond organism-specific promoters) as well as adjustable expression levels of heterologous and native genes was demonstrated. The SES is an unprecedentedly broadly functional gene expression regulation method that enables significantly improved engineering of fungi. Importantly, the SES system makes it possible to take in use novel eukaryotic microbes for basic research and various biotechnological applications.

INTRODUCTION

The progress in DNA sequencing is rapidly uncovering the genetic richness of life. Parallel development of computational methods, novel algorithms, databases and increased computing power is now making it possible to extract meaningful information from the exponentially growing pool of sequence data. However, our capacity to read DNA sequences and to characterize novel microbial species is highly exceeding our possibilities in utilizing this information for basic research and biotechnology applications. The ability

to design and write the code for biological systems can be harnessed to its full effect only if we have robust and predictable genetic tools that enable efficient engineering of biological systems to perform the designed tasks.

Nature contains a vast number of microbial species of which only a minute fraction is currently being used in biotechnological processes. Introducing novel production hosts with superior native characteristics (such as high resistance to extreme conditions, specific metabolic traits or efficient protein secretion) could offer interesting opportunities for the industry, and for detailed functional studies of the different microbes. To achieve this, essential tools would be robust and predictable gene expression systems. The lack of suitable expression systems, and slow progress in their development for each individual organism, are significantly hindering the use of novel hosts. The ability to engineer an increasing number of microbes would enable us to more efficiently study the richness of biological properties that have developed during evolution.

Wide applicability of an expression system across different organisms and production conditions requires minimal interference from endogenous gene expression regulation. There are several reports on engineering and characterization of gene expression systems that confer high level of functional independence over the native transcription regulation. This independence is typically achieved by the use of heterologous hybrid-transcription factors composed of independent DNA-binding and transcription activation domains of bacterial and viral origin, respectively (1–7). Most of these systems are regulated by an externally added compound, such as estradiol, testosterone or doxycycline (1,2,4,8,9), which due to cost, represents a potential hindrance for industrial feasibility. Although these systems are important tools for proof-of-concept studies, they have not been demonstrated to control gene expression in other species than those they were designed for. The species-specificity arises from the fact that the essential parts (such as artificial transcription factors) are expressed using native promoters.

Recently, we established an expression system for *Saccharomyces cerevisiae* (10) in which, in contrast to the pre-

*To whom correspondence should be addressed. Tel: +358 50 5227846; Fax: +358 20 7227071; Email: jussi.jantti@vtt.fi
Correspondence may also be addressed to Dominik Mojzita. Tel: +358 40 3591913; Fax: +358 20 7227071; Email: dominik.mojzita@vtt.fi

ceding systems, the transcription factor was expressed using a core promoter (CP) instead of a full-length promoter. Similarly to several existing systems, our expression system made use of heterologous DNA-binding and transactivation domains in the designed (synthetic) transcription factor. Expression of the transcription factors constitutively, at low level, using the CP alone, enabled highly constitutive expression of target genes that contained in their promoters upstream binding sites (BS) for the transcription factor. By changing the number of transcription factor BS, and the CPs, a wide range of target gene expression levels was achieved in *S. cerevisiae* without the use of external inducer compounds.

Here, we describe a novel synthetic expression system (SES) that builds on the modular architecture of the previously established gene expression system for *S. cerevisiae* (10). The expression system is composed of a set of CPs and transcription factor modules originating from heterologous organisms. We demonstrate that the SES system is functional in a broad range of yeast and filamentous fungi species and that it allows adjustable and strong expression of target genes to higher levels than attainable with the strongest widely used promoters in the tested species. Importantly, in contrast to typical endogenous promoter-based systems, the system provides means for growth condition insensitive gene expression control. As a validation of its potential we show that the SES system enables engineering of fungal species that have not been previously genetically engineered (yeasts *Candida apicola* and *Zygosaccharomyces lentus*). The SES system represents a disruptive technology that now enables efficient utilization of nature's microbial diversity in research and biotechnology applications.

MATERIALS AND METHODS

Strains and media

Parental strains which were used in this study are listed in Supplementary Table S1.

Bacterial cultivations were done in lysogeny broth (LB) with ampicillin (10 g/l tryptone (Becton Dickinson), 5 g/l yeast extract (Becton Dickinson), 0.17 M NaCl and 100 µg/ml ampicillin (Sigma-Aldrich)). Media which used in experiments with yeast and filamentous fungi: YPD (20 g/l bacto peptone (Becton Dickinson); 10 g/l yeast extract, 20 g/l D-glucose); SCD (6.7 g/l yeast nitrogen base (Becton Dickinson), 20 g/l D-glucose, 790 mg/l complete supplement mixture (Formedium)); SGM (20 g/l spent grain, 20 g/l spent grain extract, 60 g/l lactose, 37.8 mM (NH₄)₂SO₄, 36.7 mM KH₂PO₄, 2.4 mM MgSO₄, 4.1 mM CaCl₂, 15.6 µM CoCl₂, 18.0 µM FeSO₄, 4.9 µM ZnSO₄ and 9.5 µM MnSO₄); Repressing medium with glucose used in bioreactors (10g/l glucose, 20 g/l yeast extract, 37.8 mM (NH₄)₂SO₄, 36.7 mM KH₂PO₄, 2.4 mM MgSO₄, 4.1 mM CaCl₂, 15.6 µM CoCl₂, 18.0 µM FeSO₄, 4.9 µM ZnSO₄ and 9.5 µM MnSO₄); YPGel (20 g/l bacto peptone, 10 g/l yeast extract, 30 g/l gelatine). In case of agar plate cultivations, 20 g/l agar was added to liquid medium in addition to the components mentioned above. To produce *Aspergillus niger* and *Trichoderma reesei* conidia, potato dextrose agar

plates were used—PDA (39 g/l potato dextrose agar (Becton Dickinson)). Cellulose containing plates were used as an inducing medium with *T. reesei* (20 g/l cellulose, 1.25 g/l yeast extract, 0.11 M KH₂PO₄, 37.8 mM (NH₄)₂SO₄, 2.4 mM MgSO₄, 4.1 mM CaCl₂, 0.1% Triton X-100, 20 g/l agar, 15.6 µM CoCl₂, 18.0 µM FeSO₄, 4.9 µM ZnSO₄ and 9.5 µM MnSO₄).

Cloning

All the plasmids used in this study were cloned according to the manufacturer's protocol using Gibson assembly (New England Biolabs), restriction enzyme-based techniques (Thermo Fisher Scientific), or by utilizing yeast homologous recombination (11,12). Kapa Hifi enzyme (Kapa Biosystems) was used for all polymerase chain reaction (PCR) reactions. Ligation and Gibson assembly mixes were transformed into *Escherichia coli* TOP10 by electroporation and the correct plasmids were identified by analytical digestions and sequencing. Sequences of the CPs, genes and other sequences are shown in Supplementary Tables S2–4. Synthetic DNA fragments and primers used in this work were obtained from Integrated DNA Technologies.

Core promoter screen

CPs of selected genes of *S. cerevisiae*, *A. niger* and *T. reesei* were ordered as synthetic DNA (Supplementary Table S2), and their functionality was tested in a *S. cerevisiae*-based screen. Candidate CPs were selected based on the following criteria; (i) they are part of a promoter of highly expressed gene, which was based on RNA sequencing (transcriptomics) data for *A. niger* (13) and *T. reesei* (14); (ii) they contain a TATA sequence (possible TATA-box) in their structure, upstream of the start codon, where the distance of the TATA sequence and the start codon (ATG) is no more than 180 bp and no less than 80 bp (in case of multiple sequences fulfilling the description, the TATA-box is defined as the TATA sequence with smallest distance from the start codon); (iii) the transcription start site is located downstream of the TATA sequence. The final selected CP sequence included a region spanning 50 bp upstream of the TATA-box to the start codon. Typical length of the CP varied approximately from 140 to 200 bp. Also 55 bp homology-regions matching the linearized target plasmid were introduced into CP synthetic DNA to allow plasmid assembly by *in vivo* homologous recombination in *S. cerevisiae*.

The gene blocks were co-transformed into *S. cerevisiae* with linearized centromeric plasmid which contained four BS for the LexA-based synthetic transcription factor (sTF) (forming a synthetic UAS for the tested CPs), mCherry reporter gene, and *LEU2* selection marker (Figure 1B). The *in vivo* homologous recombination assembly created a LexA-sTF dependent synthetic promoter which controlled the expression of mCherry. Transformation was done into strains H3899 (WT) (Supplementary Table S1) and H4489. H4489 was constructed by transforming strain H3900 with *NsiI* linearized pHI3i-Tcp-sTF16 (10) to generate a strain expressing LexA-VP16 sTF constitutively from *TDH3cp*. Transformation was done into both strains to identify CP's

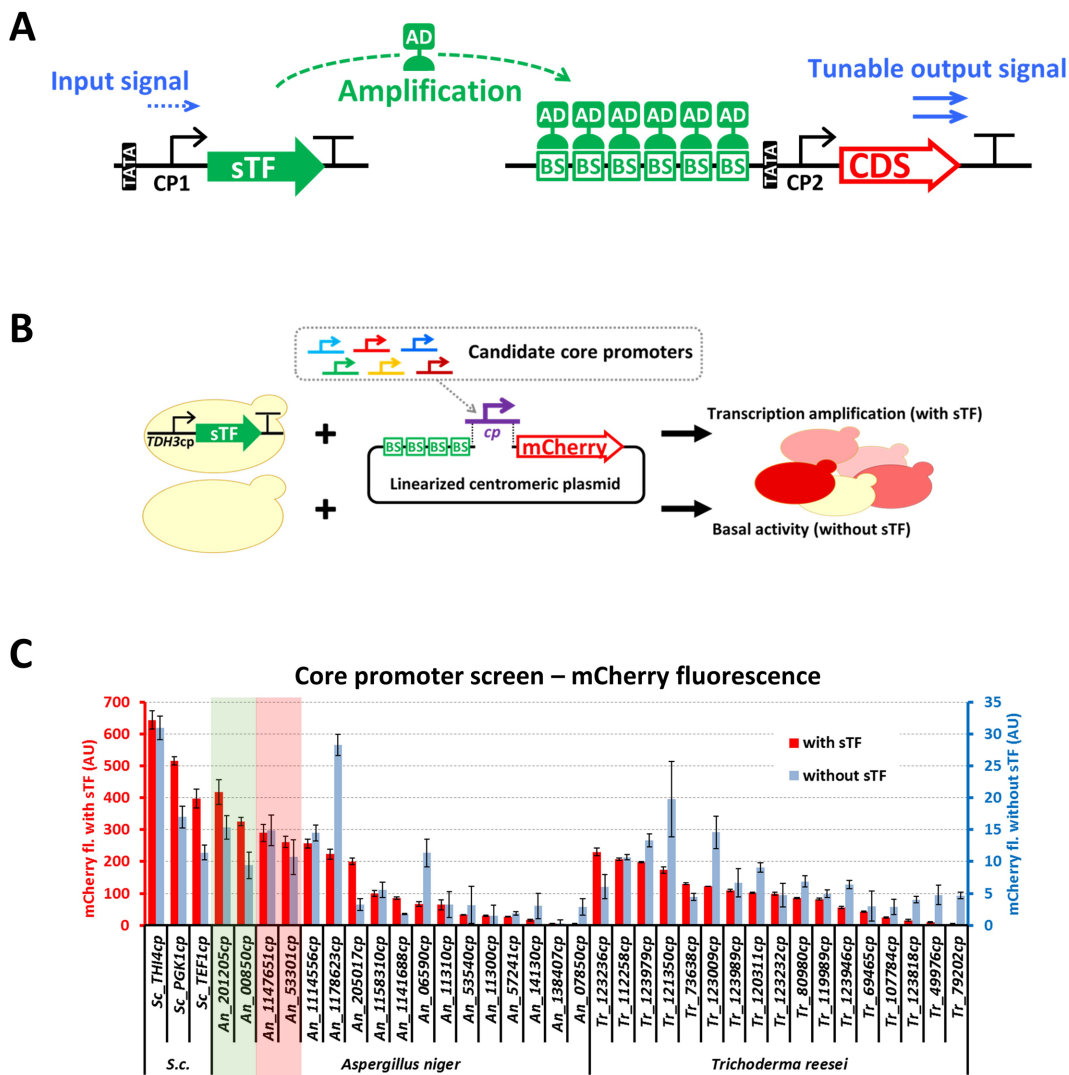


Figure 1. The SES and the CP performance screen in *Saccharomyces cerevisiae*. (A) A schematic presentation of the SES concept. Expression of an sTF is achieved by a CP (CP1), which provides low and highly constitutive expression (input signal). The sTF recognizes BS in the upstream part of a target gene synthetic promoter, which can be designed to provide on-demand (amplification) output by varying the number of BSs and by the choice of a CP (CP2). (B) The setup for the CP screen in *S. cerevisiae*. Diverse CPs produced as synthetic DNA fragments were assembled *in vivo* (co-transformed) with a linearized centromeric plasmid in a *S. cerevisiae* strain expressing the LexA-VP16 sTF (and in parallel in an isogenic strain lacking the sTF). Two parameters were assessed, (i) ‘Transcription amplification’ which represents the capacity of the CP to trigger transcription initiation in the presence of the sTF, and (ii) ‘Basal activity’ which represents the ability of the CP to initiate transcription without sTF. (C) The mCherry fluorescence of the strains with the tested candidate CPs. The fluorescence of strains with the sTF (red bars) are plotted on the left y-axis, and the fluorescence of strains without the sTF (blue bars) are plotted on y-axis on the right. *S. cerevisiae* (S.c.) native CPs (*THI4cp*, *PGK1cp* and *TEF1cp*) were included as examples of highly functional species-specific CPs. The CPs from *Aspergillus niger* and *Trichoderma reesei* represent candidates from evolutionary distant organisms with a potential to retain their function in a broad spectrum of hosts. Coloured shading marks the four heterologous CPs (based on the transcription amplification function), which were selected to construct SES-A (green shading;) and SES-B (pink shading) expression systems. Values and error bars represent the mean and standard deviation from three biological replicates.

basal transcription level (H3899, no sTF expression) as well as its performance once activated with sTF (H4489) (Figure 1B).

Pooled colonies were tested from each yeast transformation for mCherry fluorescence. This was done to allow a quick CP performance test without the need for tedious selection of colonies with sequence-confirmed assembled plasmids. To assess the relevance of the setup, for one transformation (with the 533cp), 40 random colonies were picked, plasmids isolated and sequenced and also fluorescence measurement performed. All plasmids contained

the integrated CP; however in some (<10%) plasmids, the CP was incorrectly assembled. Fluorescence variation in colonies with correctly assembled plasmids was minimal, and colonies with incorrect plasmids showed no fluorescence. The average fluorescence of the tested individual colonies corresponded to the fluorescence of the pooled colonies (data not shown).

Fluorescence measurement was done as described in the section ‘Fluorescence measurement of yeast species with fluorometer’, except the pre-cultivations were conducted on SCD agar plates lacking histidine and leucine.

SES expression cassettes

SES expression cassettes were constructed as single DNA molecules containing expression cassettes, both for mCherry and for sTF. The SES systems were cloned into species-specific integration plasmids, which contained a selectable marker gene and flanks for in-genome integration by homologous recombination (Supplementary Table S5). The mCherry expression cassettes contained a synthetic promoter which consisted of eight Bm3R1-specific sTF BS (Supplementary Table S4) and either An-201cp (SES-A) or An-114cp (SES-B), and the mCherry reporter gene (encoding red fluorescence protein), which was followed by the *S. cerevisiae* *ADHI* terminator. The sTF expression cassette contained either An-008cp (SES-A) or An-533cp (SES-B), the sTF (BM3R1-NLS-VP16) encoding gene and the *T. reesei* *TEF1* terminator. The corresponding negative control (NC) cassettes lacked the CP for the sTF, as indicated by a green dashed box in Figure 2A and Supplementary Figure S1A).

The SES-A expression cassettes with 0, 1, 2 and 4 sTF BS for *A. niger* and *Pichia kudriavzevii* were constructed analogously to the SES-A systems for these hosts, with the only difference being the number of sTF BS. In the case of *P. kudriavzevii*, also NC cassettes with 0, 1, 2 and 4 sTF BS were constructed on the basis the SES-A-NC.

The SES-B+NAT expression cassettes for *C. apicola* and *Z. lentus* were constructed by combining 5'- and 3'-genome integration homology-regions with the SES-B cassette and an expression cassette for nourseothricin selection marker (NAT). The NAT marker cassette contained two sTF BS, An-201cp, NAT ORF and *Yarrowia lipolytica* *TEF1* terminator.

The SES-C expression cassette contained *cbh1* gene (coding region identical to genomic sequence in *T. reesei* including naturally occurring introns). The mCherry-*ScADHI* terminator part of the *T. reesei* SES-B construct was replaced by the *cbh1-TrPDC1* terminator DNA fragment. The resulting SES-C system was subsequently cloned into a *T. reesei* plasmid with *cbh1*-locus targeting flanks (Supplementary Table S5).

Expression systems based on the established promoters

The sequences of promoters commonly used for (heterologous) gene expression in *S. cerevisiae* (*PGK1* pr.), *Y. lipolytica* (*TEF1* pr.), *Pichia pastoris* (*GAP1* pr.) and *A. niger* (*Aspergillus nidulans* *gpdA* pr.) are listed in Supplementary Table S12. To assess their functionality in *S. cerevisiae*, these promoters were cloned into an integration plasmid forming four control constructs where the promoter was placed upstream of the mCherry-*ScADHI* terminator fragment (Supplementary Figure S5A). In addition, *Y. lipolytica*, and *A. niger* specific constructs with the corresponding promoters were made where the species-specific promoter was placed upstream of the mCherry *ScADHI* terminator fragment (Supplementary Figure S5A). All these constructs had identical selection markers and the genome integration DNA-flanks as the corresponding SES cassettes. In case of *P. pastoris*, the mCherry-*ScADHI* terminator fragment was cloned downstream of the *GAP1* promoter into

the pGAPZ_A vector (Thermo Fisher Scientific) between the *EcoRI* and *NotI* sites.

Transformations

Transformations of SES expression cassettes and the cassettes with the established promoters were done by targeted, single copy integration into the host organism's genome. The integration loci and length of the integration flanks are shown in Supplementary Table S5.

The SES and the control-promoter cassettes (for selected hosts), including the selection marker and the integration flanks, were released from plasmids by *NotI* restriction enzyme digestion prior to transformation of *S. cerevisiae*, *P. kudriavzevii*, *Y. lipolytica* and *A. niger*. *MssI* enzyme digestion was used prior to transformation of *T. reesei*, *C. apicola* and *Z. lentus*. The plasmids for *P. pastoris* were only linearized by the digestion of *MssI* (SES systems), or *AvrII* (*GAP1* promoter control).

The yeast integrative plasmids were transformed into yeast parental strains (Supplementary Table S1) with the standard lithium acetate protocol (15), except of *C. apicola*. The method for *T. reesei* transformation was described previously (16).

Aspergillus niger transformations were done using a protoplast method. *A. niger* conidia ($\sim 2 \times 10^8$) were cultivated overnight at +28°C (250 rpm) in 250 ml YPGel. Mycelium was vacuum filtrated and washed with water and cold KMC solution (1 M KCl, 25 mM CaCl₂, 10 mM Tris-HCl, pH 5.8). Protoplasts were prepared by digesting the cell wall of mycelium by incubation for 3 h at +30°C (60 rpm) with 20 ml of Caylase C4 (Cayla) solution (1 mg enzyme/1 ml KMC). Protoplasts were cooled down on ice and isolated by vacuum filtration through a sterilized fabric. Protoplasts were washed (4 min, 1500 g, +2°C) with 20 ml of cold KMC followed by a wash with 20 ml of cold STC solution (1.33 M D-sorbitol, 10 mM Tris-HCl, 50 mM CaCl₂, pH 8.0). Protoplasts were suspended into 200 μ l of STC solution. One hundred μ l of protoplast suspension was mixed with 3.5 μ g of donor DNA (*NotI* digested plasmid) and 30 μ l of CRISPR-solution (1 μ M Cas9 protein, 1 μ M synthetic crRNA (an equimolar mix of three different targeting RNAs, Supplementary Table S6), and 1 μ M tracrRNA (all IDT)). A total of 100 μ l of transformation solution (25% PEG 6000, 50 mM CaCl₂, 10 mM Tris-HCl, pH 7.5) was added followed by a 20-min incubation on ice. A total of 2 ml of transformation solution was added and the mixture was incubated for 5 min at RT. A total of 4 ml of STC was added followed by 7 ml of molten (50°C) top agar (200 g/l D-sorbitol, 6.7 g/l of yeast nitrogen base, complete supplement mixture without uracil (Formedium) and 20 g/l D-glucose). The mixture was poured on a selection plate lacking uracil (identical composition as the top agar). Cultivation was done at +28°C for 5 days.

Candida apicolatransformation was done by the same method as the *A. niger* transformation, with following modifications: The protoplasts were prepared from cells cultivated overnight at +30°C (250 rpm) in 50 ml of YPD. The washed cells were incubated in 20 ml of Lysing Enzymes from *Trichoderma harzianum* (Sigma-Aldrich) solution (1 mg enzyme/1 ml KMC) for 40 min at +30°C (60 rpm).

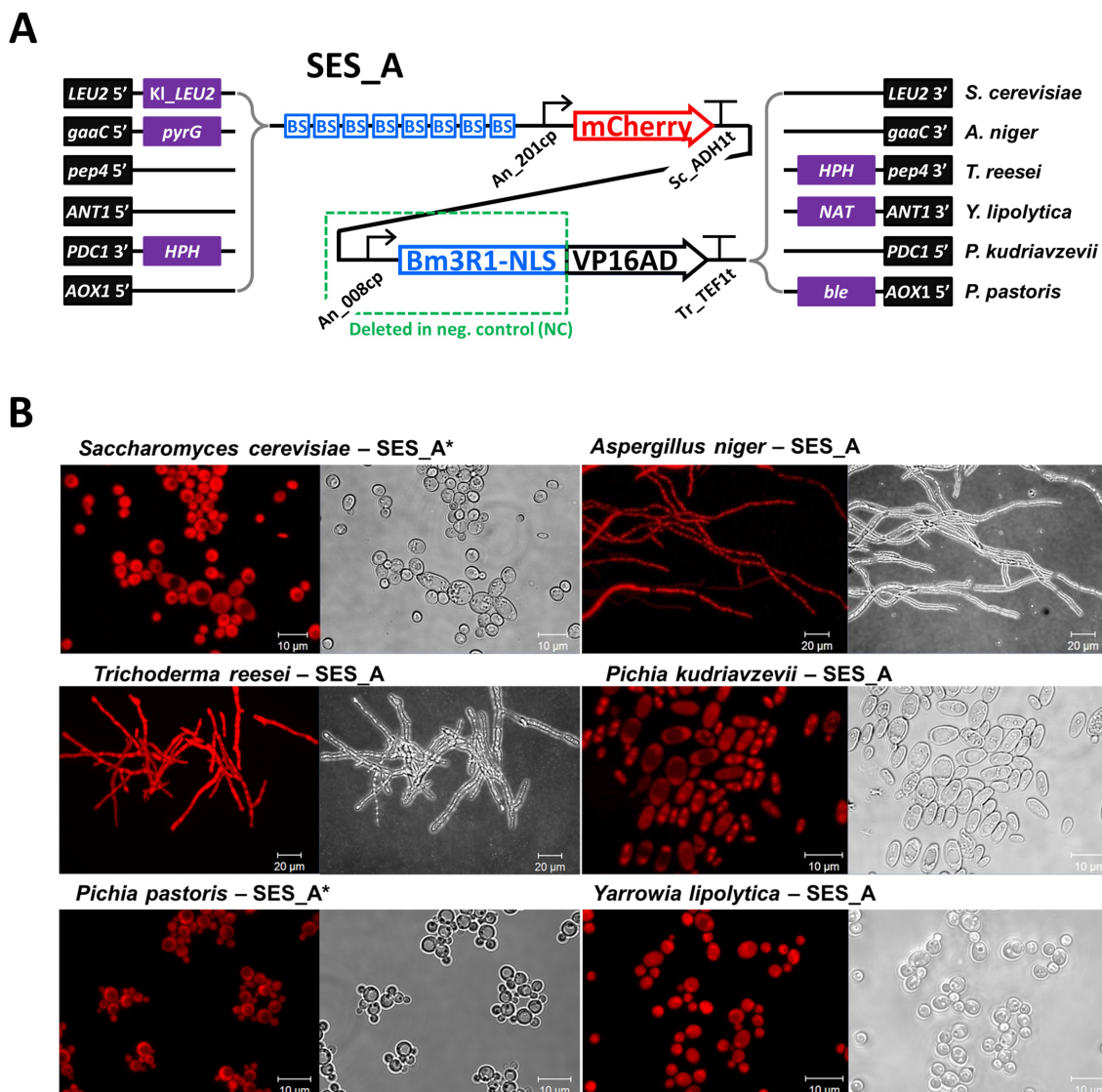


Figure 2. Construction of SES and the assessment of function in a range of fungal hosts. (A) A schematic presentation of the SES system (SES-A), including positions of selection markers and genome-integration flanks for the listed species. The An_00850 CP (An_008cp) was used for the expression of the sTF (Bm3R1-NLS-VP16). The mCherry expression was controlled by the sTF via the sTF-specific BS positioned upstream of the An_201205 CP (An_201cp). The NC lack the region spanning the CP (An_008cp) and a large portion of the sTF. Each cassette was integrated in the specified genomic locus in single copy. (B) Fluorescent microscopy of the different microbial species harbouring the SES-A or SES-A* (asterisk indicates *Saccharomyces cerevisiae* codon optimized sTF). Uniform mCherry fluorescence signal was observed in all cells in the tested species. A corresponding bright field image is shown for each strain. The micrograph acquisition settings and the contrast were adjusted to maximize the visualization of the red fluorescence.

Single targeting RNA was used (Supplementary Table S6). The selection agent in the top agar as well as in the agar plates was 200 $\mu\text{g}/\text{ml}$ nourseothricin. Cultivation was done at +30°C for 4 days.

SES- and control-promoter strain genome-integration analysis

Single colonies from transformation plates were isolated and regrown on appropriate selection plates. The clones were analysed to select the ones with correct integration at the intended locus and a single genomic copy of the integrated SES cassettes or the control cassettes with established promoters. Genomic DNA was extracted from the yeasts clones with phenol chloroform extraction method,

and from the *T. reesei* and *A. niger* clones by using the Phire Plant Direct PCR kit (Thermo Fisher Scientific) according to manufacturer's protocol. Phenol chloroform method was conducted by disrupting cells using Precellys24 homogenizer (Bertin Instruments). A total of 600 μl of glass beads, 600 μl 1 \times TE (pH 7.5) and 600 μl of phenol-chloroform-isoamyl-alcohol solution (50% phenol, 48% chloroform, 2% isoamylalcohol) were added and shaken vigorously. After centrifugation the supernatant was diluted 100 \times in water to obtain the template for the subsequent copy number and integration site PCR analysis. Copy number analysis was conducted with quantitative reverse transcriptase-PCR (qRT-PCR) Lightcycler 480II (Roche) using LightCycler[®] 480 SYBR Green I Master (Roche) according to manu-

facturer's instructions. The qPCR signal of the SES target (mCherry and Bm3R1) was normalized to a reference gene of the host (RT-PCR primers listed in Supplementary Table S7). The correct single-integrations clones conferred value ~ 1 (in case of diploid *P. kudriavzevii* value ~ 0.5). The correctness of the integration loci was confirmed by PCR of the genomic DNA, where the amplified DNA region spanned the integrated construct and the genomic DNA outside of the integration flanks.

Fluorescence measurement of yeast species with fluorometer

Yeast cells (*S. cerevisiae*, *Y. lipolytica*, *P. kudriavzevii*, *P. pastoris* and *C. apicola*) were cultivated at $+30^{\circ}\text{C}$ on YPD plates for 24 h before starting the experiment, *Z. lentus* was cultivated at $+24^{\circ}\text{C}$ on YPD plates for 48 h. A total of 4 ml of SCD medium in 24-well plate was inoculated to initial optical density of 0.2 (OD_{600}). Three parallel replicates were cultivated for each strain. Cells were cultivated for 18 h ($+30^{\circ}\text{C}/+24^{\circ}\text{C}$ in case of *Z. lentus*, 800 rpm) followed by centrifugation and resuspension in 200 μl of water. A total of 200 μl of the suspension was transferred to Black Cliniplate (Thermo Fisher Scientific) and mCherry fluorescence was measured with Varioskan (Thermo Electron Corporation). The excitation and the emission wavelengths were 587/610 nm, measurement time was 500 ms using a 12 nm excitation bandwidth. Cell density (OD_{600}) measurement was done for normalizing mCherry fluorescence measurement results. For this, cells were diluted 100 \times in water, and then OD_{600} was measured with Varioskan (photometric measurement mode, wavelength = 600 nm, bandwidth = 5 nm, measurement time = 100 ms) using a transparent microtiter plate (Nunc 96F, Thermo Fisher Scientific). Normalization was done by dividing the mCherry measurement value with OD_{600} result.

Fluorescence measurement of *T. reesei* with fluorometer

Trichoderma reesei conidia were used to inoculate 50 ml YPGel pre-cultivations. Cultivations were carried out at $+28^{\circ}\text{C}$ (200 rpm) for 24 h. Mycelium was centrifuged, supernatant removed and pellet resuspended in water. The suspensions were used to inoculate four ml SCD cultivations (three replicates each) in a 24-well plate to an initial density of 0.5 (OD_{600}). Cells were cultivated 18 h at $+28^{\circ}\text{C}$ (800 rpm) followed by centrifugation and resuspension in 600 μl of water. A total of 200 μl of the suspension was transferred to Black Cliniplate (Thermo Fisher Scientific) and mCherry fluorescence was measured with Varioskan in the same way as described above in the section 'Fluorescence measurement of yeast species with fluorometer'. OD_{600} was measured by preparing 10 \times dilutions from the cell suspension. OD_{600} values were used for normalizing the fluorescence results to cell density.

Flow cytometry

Yeast cultivations were conducted in a same way as described above in 'Fluorescence measurement of yeast species with fluorometer'. Cells were diluted into 1 \times phosphate-buffered saline (PBS) solution and measurements were done with FACS Aria III (BD). A total of 10 000

events were recorded and results were normalized by dividing mCherry fluorescence values by cell size (forward scatter, FSC-A). The green (561 nm) laser and 610/20 nm filter were used for the mCherry fluorescence measurements, the voltage settings used in flow cytometry analysis are shown in Supplementary Table S8. In the case of *A. niger* and *T. reesei* strains, the flow cytometry was done using conidia. Strains were first sporulated on PDA plates (7 days), conidia were collected and diluted in 1 \times PBS prior to the flow cytometry analysis. Minor gating was performed on data to exclude obvious errors, such as dust particles, cell clusters and conidia aggregates. Flow cytometry results were analysed with IBM SPSS statistics software.

Sample collection for transcription analysis

Samples were collected after 18 h of cultivation, washed with cold water before freezing the pellets in liquid nitrogen and stored at -80°C . Transcription analysis was performed using two biological replicates. From each biological replicate, two technical replicates were conducted.

Yeast cells (*S. cerevisiae*, *Y. lipolytica*, *P. kudriavzevii* and *P. pastoris*) were cultivated for transcription analysis as described in chapter 'Fluorescence measurement of yeast species with fluorometer'.

Trichoderma reesei mycelia were cultivated for transcription analysis as described in section 'Fluorescence measurement of *T. reesei* with fluorometer'. For transcription analysis of bioreactor cultures, samples were collected at the specified time points from the bioreactor. The mycelium was isolated by vacuum filtration and quenched in liquid nitrogen.

Aspergillus niger conidia were used to inoculate 50 ml of YPGel pre-cultivations. Mycelia were pre-grown in 250-ml Erlenmeyer flasks for 24 h at 28°C , 200 rpm and harvested by vacuum filtration. Collected mycelia were resuspended in 50 ml of SCD and divided in 4 ml parallel cultivations in 24-well plates, and cultivated for 18 h at 28°C , 800 rpm. Samples for transcriptional analysis were collected by vacuum filtration and quenched in liquid nitrogen.

RNA extraction and cDNA synthesis

RNeasy Mini Kit (Qiagen) was used for total RNA extraction from each tested organism. Approximately 100 μg (wet weight) of yeast cells or the mycelium samples were disrupted using Precellys24 homogenizer (Bertin Instruments). A total of 600 μl of glass beads (acid-washed; 425–600 μm ; Sigma-Aldrich) and 600 μl of RLT buffer were added to the cells on ice, and shaken (instrument settings: 6500 – 2 \times 30 s). After centrifugation of the samples, 350 μl of the supernatant was subjected to the RNeasy protocol 1c for yeast. The RNA concentration and purity was determined by Nanodrop 2000 instrument (Thermo Fisher Scientific), and the integrity of RNA assessed by Agilent 2100 Bioanalyzer. A total of 1 μg of the total RNA was treated with DNase (DNase I RNase-free, Thermo Fisher Scientific) to remove residual genomic DNA. Transcription First Strand cDNA Synthesis Kit (Roche) was used for the cDNA synthesis according to manufacturer's protocol with anchored-oligo(dT)₁₈ primer.

Quantitative RT-PCR

The RT-PCR reactions were prepared in white LightCycler 480 96-well plates (Roche) by combining 2.5 μ l of 100 \times diluted cDNA samples, 2.5 μ l of primer mixes (8 μ M each) and 15 μ l of 1.5 \times diluted LightCycler 480 SYBR Green I Master (Roche). The reactions were performed using the Lightcycler 480II instrument (Roche), and the analysis was done with the accompanied software: (i) Advanced Relative Quantification Tool (high confidence program) for calculating fold-expression ratios toward the selected normalization gene signal, (ii) Melting Curve Genotyping Analysis to validate the identity of the PCR products. The tested genes were translation elongation factor one alpha from each selected organism, mCherry and Bm3R1 (sTF). Their expression levels were normalized to ubiquitin-protein ligase encoding gene (*UBC6* in *S. cerevisiae* and its closest homologs in other species). The use of the *UBC6* as the transcription normalization control was motivated by the extraordinary stability of its expression in various conditions reported in *S. cerevisiae* (17) and also seen in *T. reesei* (14). In the case of *T. reesei*, also expression of *cbh1* and actin-encoding genes were tested. The primers used in transcription analyses, the target genes including references to genome databases for each organism and the length of each RT-PCR amplicon are shown in Supplementary Table S9.

Comparison of the SES system with selected established promoters

The strains of yeast species (*S. cerevisiae*, *Y. lipolytica* and *P. pastoris*) carrying the SES-A/SES-A* system and the strains with expression systems based on the established promoters were compared by fluorometry. The strains were pre-cultivated overnight on selection plates at +30°C. A total of 4 ml of SCD medium (or SCD + 100 μ g/ml zeocin in the case of *P. pastoris* strains) was inoculated to OD₆₀₀ of 0.2 in 24-well plates. Cultivations were maintained 18 h at +30°C (800 rpm). The cells were pelleted by centrifugation, resuspended into 200 μ l of water and fluorescence was measured as described in the section ‘Fluorescence measurement of yeast species with fluorometer’.

In case of *A. niger*, transcription analysis was used for the comparison of the SES-A system with the expression system based on the *A. nidulans gpdA* promoter. A total of 50 ml of YPDGel medium was inoculated with $\sim 2.5 \times 10^7$ conidia and cultivated for 24 h at +28°C (250 rpm). The mycelium was collected and washed with cold water prior to freezing with liquid nitrogen. RNA extraction and cDNA synthesis was done as described in the sections ‘RNA extraction and cDNA synthesis’ and ‘Quantitative RT-PCR’.

Fluorescence microscopy

Localization of mCherry was visualized in all organisms using a Zeiss LSM 710 laser scanning confocal microscope (Carl Zeiss, Oberkochen) with a 63 \times water immersion objective (excitation at 543 nm and detection at 586–670 nm). Yeast cells were prepared for microscopy similarly as in ‘Fluorescence measurement of yeast species with fluorometer’ experiments. Filamentous fungi mycelia were prepared by inoculating and cultivating conidia in 50 ml YPDGel

(28°C, 200 rpm, 2 days). Samples showing *A. niger* and *T. reesei* during conidiogenesis (sporulation) were collected from PDA or cellulose-containing agar plates.

CBHI protein production

The use of the SES system for protein production was demonstrated by producing CBHI protein in *T. reesei* and the performance of the expression system was compared to production of native CBHI in the parental strain. The strain carrying SES system and the parental strain (M2068) were cultivated in 1 l bioreactors either in cellulase-inducing medium (SGM) as batch cultivations, or in repressing medium (containing glucose) at 28°C as fed-batch cultivations. The pH (pH 5.5) and the glucose feed were controlled via the control paradigm DELTABAS, as described previously (18). The cultivations were carried out for 5 days and the samples from days 1 (18 h), 3 (66 h), and 5 (117 h) were analysed for the total protein and CBHI production into the culture media (secreted protein) and for the transcription of the selected genes.

For the total protein analysis, 1.5 μ l of each culture supernatant was mixed with 15 μ l of 1 \times sodium dodecyl sulphate (SDS) loading buffer (100 ml/l glycerol, 25 ml/l β -mercaptoethanol, 0.5 g/l OrangeG dye (Sigma-Aldrich), 10 g/l SDS and 31.2 mM Tris-HCl, pH 6.8), boiled and loaded on a 4–20% SDS-polyacrylamide gel electrophoresis (SDS-PAGE) gradient gel (BioRad) together with dilutions of purified CBHI protein as a standard. The gel was stained with colloidal coomassie stain (PageBlue Protein Staining Solution; Thermo Fisher Scientific) according to manufacturer’s protocol. The visualization of the stained gel was performed on the Odyssey CLx Imaging System instrument (LI-COR Biosciences). Total protein concentration in the culture supernatants were calculated based on the CBHI standard with the Image Studio™ Software (LI-COR Biosciences).

For the western blot analysis, 0.075 μ l of each culture supernatant was mixed with 15 μ l of 1 \times SDS loading buffer, boiled and loaded on a 4–20% SDS-PAGE gradient gel (Criterion TGX, BioRad) together with dilutions of purified CBHI protein. The gel was transferred onto a nitrocellulose membrane (Trans-Blot Turbo, BioRad), and the membrane was blocked with Odyssey blocking solution (LI-COR Biosciences). The CBHI protein was detected with the mouse anti-CBHI primary antibody (mab261, 1:5000 dilution in TBST), and goat anti-mouse-IRDye-680RD secondary antibody (LI-COR Biosciences; 1:10000 dilution in TBST). The composition of TBST solution was 10 mM Tris-HCl, 4.4 g/l NaCl, 0.5 ml/l Tween-20 (Fluka), pH 8.0. The visualization of the signal was performed on the Odyssey CLx Imaging System instrument (LI-COR Biosciences). The CBHI concentration in the culture supernatants was calculated based on the CBHI standard with the Image Studio™ Software (LI-COR Biosciences).

Partial genome sequence analysis of *Zygosaccharomyces lentus*

The *ACT1* gene was amplified from purified genomic DNA of *Z. lentus* with primers (Zb.ACT1_F: ATGGAGAAAA TCTGGCACCA CACCTTCTAC, and Zb.ACT1_R:

TTAGAAACAC TTGTGGTGGG CGATGGATGG) designed based on the related sequenced species *Zygosaccharomyces bailii* (http://fungi.ensembl.org/Zygosaccharomyces_bailii.isa1307/Info/Index). The PCR product was sequenced (Supplementary Table S10), and the qPCR primers designed based on the sequenced DNA. To obtain suitable sequence for the genome integration, the *Z. lentus* genomic DNA was digested with *MunI* restriction enzyme, the DNA fragments ligated into *EcoRI*-digested plasmid pRSET_A (Invitrogen) and several plasmids containing inserts longer than 1000 bp were sequenced. One of the fragments contained a genomic region encompassing *YIP3* CDS with up- and down-stream regions (Supplementary Table S11), which was used for targeting the SES cassette into the genome of *Z. lentus*.

Analysis of SES system's genetic stability

The long-term expression stability of the SES system was tested by conducting extended, regularly diluted cultivations. First, yeast strains carrying the SES-A (*Y. lipolytica* and *P. kudriavzevii*) or SES-A* (*S. cerevisiae* and *P. pastoris*) cassettes were pre-cultivated on selection plates overnight at +30°C. These cultivations were used to inoculate 25 ml of YPD (YPD + 100 µg/ml zeocin in case of *P. pastoris*) medium to initial OD₆₀₀ of 0.2. The cultivations were continued for 24 h at +30°C (250 rpm), after which 150 µl of the cultures were used to inoculate new 25 ml of YPD (or YPD + 100 µg/ml zeocin in case of *P. pastoris*). The re-inoculation was repeated every 24 h for 7 days (Supplementary Figure S8A). The fluorescence was measured at days 1, 3, 5 and 7. Samples for the measurements were prepared by collecting 4 ml of cultures, pelleting the cells by centrifugation and resuspending into 400 µl of water. The fluorescence measurement was done as described in the section 'Fluorescence measurement of yeast species with fluorometer'. Three biological replicates (independent serial cultivations) were performed for each strain.

Analogous tests for the SES system stability were performed in *T. reesei* and *A. niger* strains, which were first pre-cultivated in 50 ml YPGel medium (inoculated by conidia/spores) for 3 days at +28°C (250 rpm). A total of 2.5 ml of the pre-cultures were used for inoculation of 50 ml YPDgel medium (YPGel with 20 g/l D-glucose). Cultivations were continued for 24 h at +28°C (250 rpm), after which 2.5 ml of the cultures were used to inoculate another 50 ml YPGel medium. This was repeated every 24 hours for seven days. The samples were collected at 1, 3, 5 and 7 days. For *T. reesei*, 4 ml culture samples were collected by pelleting the mycelia by centrifugation, and resuspension into 2 ml of water for the fluorescence measurement. The fluorescence was measured as described in the section 'Fluorescence measurement of yeast species with fluorometer'. For *A. niger*, transcription analysis was performed because the mycelium morphology does not allow analysis by fluorometry. The mycelium was collected and washed with cold water prior freezing with liquid nitrogen. The *A. niger* transcription samples were processed as described in the sections 'RNA extraction and cDNA synthesis' and 'Quantita-

tive RT-PCR'. Two biological replicates (independent serial cultivations) were performed for each strain.

RESULTS

Identification of universal core promoters

We recently showed that in *S. cerevisiae* the *TDH3* CP (CP) alone can be used to drive the expression of a synthetic transcription factor (sTF) at a low and constitutive level (10). The low sTF level was sufficient to strongly activate a downstream target gene, controlled by a synthetic sTF-dependent promoter. The low transcription activity of the CP (initial input signal) was amplified by binding of the sTF to the synthetic promoter, leading to a significant expression level of the target gene (output signal). The output expression level could be adjusted from low to very high by modulating the number of sTF BS and the choice of the CP region in the synthetic promoter (Figure 1A) (10). However, this particular expression system (containing *S. cerevisiae* CPs) had limited or no functionality in other eukaryotic microbes. We hypothesized that by using CP(s) with broad inter-species functionality, it might be possible to construct a generic expression system that can be used for gene expression control in a broad range of eukaryotic organisms.

To identify such CPs we carried out a screen in *S. cerevisiae* (Figure 1B). CPs selected for the test (~200 bp region of a promoter immediately upstream of the start codon) originated from filamentous fungi, *A. niger* and *T. reesei*, and they were chosen from genes that displayed high transcription levels under various growth conditions (13,14). We reasoned that due to the highly conserved core transcription machinery among eukaryotes (19,20), such CPs could have sufficient ability to initiate transcription in a broad spectrum of species. We were primarily interested in CPs that can form a strong sTF-dependent synthetic promoter, thus we used in the screen a *S. cerevisiae* strain constitutively expressing a LexA-VP16 sTF (Supplementary Table S3). This strain was transformed with a mix of linearized centromeric plasmid and a library of candidate CPs. After *in vivo* assembly of the centromeric plasmid with the candidate CP, the expression system was formed, where the tested CP became part of the sTF-dependent synthetic promoter driving the expression of a reporter gene, mCherry (Figure 1B). The level of reporter fluorescence in the resulting strains was used for quantitative assessment of the CP's functionality (Figure 1C, plotted on the left y-axis). In addition, another *S. cerevisiae* strain, which lacked the sTF, was used in a parallel screen to assess the basal expression level of the tested CPs in the absence of the sTF (Figure 1C, plotted on the right y-axis). The absence of the sTF resulted in substantially lower expression of the mCherry reporter gene. Three *S. cerevisiae* native CPs (*THI4cp*, *PGK1cp* and *TEF1cp*) were included in the screen as examples of highly active native CPs. The screen identified several heterologous CPs, which were highly functional in *S. cerevisiae*. The CP activity with upstream bound sTF was used as the main selection criterion, and the CPs showing similar activity levels as the native yeast CPs were selected for development of the SES (Figure 1C, green and pink shading).

SES enables high level gene expression in diverse eukaryotic microbes

The CPs (An_201205cp \approx An_201cp and An_00850cp \approx An_008cp) that displayed highest sTF-associated activity among the non-yeast CPs were used to construct a SES, SES-A (Figure 2A). The system was designed to contain two expression cassettes: (i) the reporter cassette with mCherry gene under the control of a synthetic promoter consisting of eight sTF-BS upstream of the An_201cp; and (ii) the sTF cassette with the An_008cp controlling the sTF expression. The sTF was composed of the (*A. niger* codon optimized) Bm3R1 DNA binding protein (21), SV40 nuclear localization signal, and the VP16 activation domain (7). The Bm3R1 was chosen based on literature (22,23) and our previous experiments with diverse bacterial DNA-binding proteins in *S. cerevisiae* (24) and *A. niger* (our unpublished observation), where the Bm3R1-based sTF showed highest capacity to activate expression. In addition to the SES-A system, an analogous SES, SES-B, was constructed which contained another pair of well-performing CPs identified in the screen (Supplementary Figure S1).

The SES-A system with species-specific selection marker genes and genome-integration DNA-flanks (Figure 2A), was integrated in single-copy into the genomes of the yeasts *S. cerevisiae*, *Pichia (Komagataella) pastoris*, *P. kudriavzevii* and *Y. lipolytica*, and in the filamentous fungi *A. niger* and *T. reesei*. These organisms form a group of evolutionarily distant fungal hosts that are industrially relevant for chemical and fuel production (*S. cerevisiae*, *Y. lipolytica*, *A. niger*), for protein production (*P. pastoris* and *T. reesei*), or represent an attractive multi-tolerant host with limited tools for gene expression engineering (*P. kudriavzevii* (25)). The resulting strains were analysed qualitatively by confocal fluorescence microscopy for production of mCherry (Figure 2B). The analysis revealed strong and uniform fluorescence throughout the cell population in liquid cultures in all tested hosts. In addition, a highly constitutive expression pattern was observed also during formation of conidia (sporulation) of filamentous fungi on solid media (Supplementary Figure S2).

To quantitate the performance of the SES system, we analysed transcription levels of the mCherry, the sTF and the *TEF* gene (encoding translation elongation factor 1 alpha; *TEF1* in yeasts, *tef1a* in *T. reesei*, and *tefA* in *A. niger*), which is one of the most highly expressed genes in eukaryotes (26). In all hosts, mCherry transcription levels were similar or higher than the level of *TEF* (Figure 3A). In *T. reesei*, the transcript level of mCherry was in fact more than 60-fold higher than the level of *tef1a*. The NC version of the SES system (SES-NC), where no sTF encoding DNA was present, resulted in negligible expression of mCherry in all hosts (Figure 3A), except of *P. kudriavzevii*, where moderate levels of mCherry transcription was detected in the strain carrying the SES-NC (\sim 10% compared to the corresponding complete SES system). This suggests that in *P. kudriavzevii*, the Bm3R1-BS may be recognised by an unidentified, endogenous transcription factor(s). Indeed, when the number of BS was decreased or no BS were used in the NC-SES system, the mCherry expression diminished (Supplementary Figure S3).

In *S. cerevisiae*, the use of the SES system resulted in relatively low level of the mCherry transcription. This was most likely caused by suboptimal translation efficiency of the sTF mRNA (*A. niger* codon optimized) in this host with an AT-rich genome. In support of this, the *S. cerevisiae* codon optimized sTF resulted in high expression of mCherry (Figure 3A, SES-A*). In *P. pastoris*, another organism with an AT-rich genome, only *S. cerevisiae* codon optimised sTF was used in the SES-A system (Figure 3A, SES-A*).

To assess the mCherry protein accumulation and expression level distribution in the tested species, fluorescence signal was analysed by flow-cytometry in yeast cells and in conidia of the filamentous fungi (Figure 3B). In addition, quantitative fluorometry of the yeast cells and the *T. reesei* mycelia was performed as an alternative method for the fluorescence assessment (Supplementary Figure S4). Consistent with the transcription analysis, flow-cytometry revealed high level of red fluorescence in the hosts and demonstrated homogeneous mCherry fluorescence in the analysed populations. In *S. cerevisiae*, a substantial increase of mCherry production after codon optimization of the sTF was confirmed (Figure 3B, SES-A versus SES-A*). However, additional codon-optimization of the mCherry gene (high-GC content variant used in all SES versions) did not increase the fluorescence level any further (data not shown). In the *T. reesei* conidia, some level of fluorescence was observed with NC version of the SES-A system, whereas negligible expression was detected in mycelia both by qPCR (Figure 3A) and by fluorometry (Supplementary Figure S4). This observation indicates the existence of an unidentified mechanism that is responsible for low activation of the SES system during *T. reesei* conidiogenesis (sporulation).

The alternative expression system (SES-B) that was based on different CPs (An_1147651cp \approx An_114cp and An_53301cp \approx An_533cp) revealed similar performance as the SES-A system for all analysed parameters (Supplementary Figures S1 and 4). Similar performance of both A and B versions of the SES system suggest that the original screen for CPs carried out in a heterologous organisms *S. cerevisiae* provided a robust platform for CP functionality.

The function of the SES system was also tested by direct comparison with established expression systems, i.e. native or commonly used promoters. Single copy genome-integrated expression cassettes, containing the mCherry reporter gene under the control of typically used fungal promoters (Supplementary Figure S5A), were compared to the SES-A system in the selected hosts. The *S. cerevisiae* *PGK1* promoter (27), *Y. lipolytica* *TEF1* promoter (28), *P. pastoris* *GAP1* promoter (29) and *A. nidulans* *gpdA* (30), were tested in *S. cerevisiae*, as well as individually in the natural hosts (Supplementary Figure S5B and C). The fluorometry analysis of the yeast strains, and the transcription analysis of the *A. niger* strains, revealed that the SES system considerably outperformed the established expression systems in each species. In addition, it was demonstrated in the *S. cerevisiae* example (Supplementary Figure S5B) that the species-specific promoters cannot be used for efficient gene expression in other hosts.

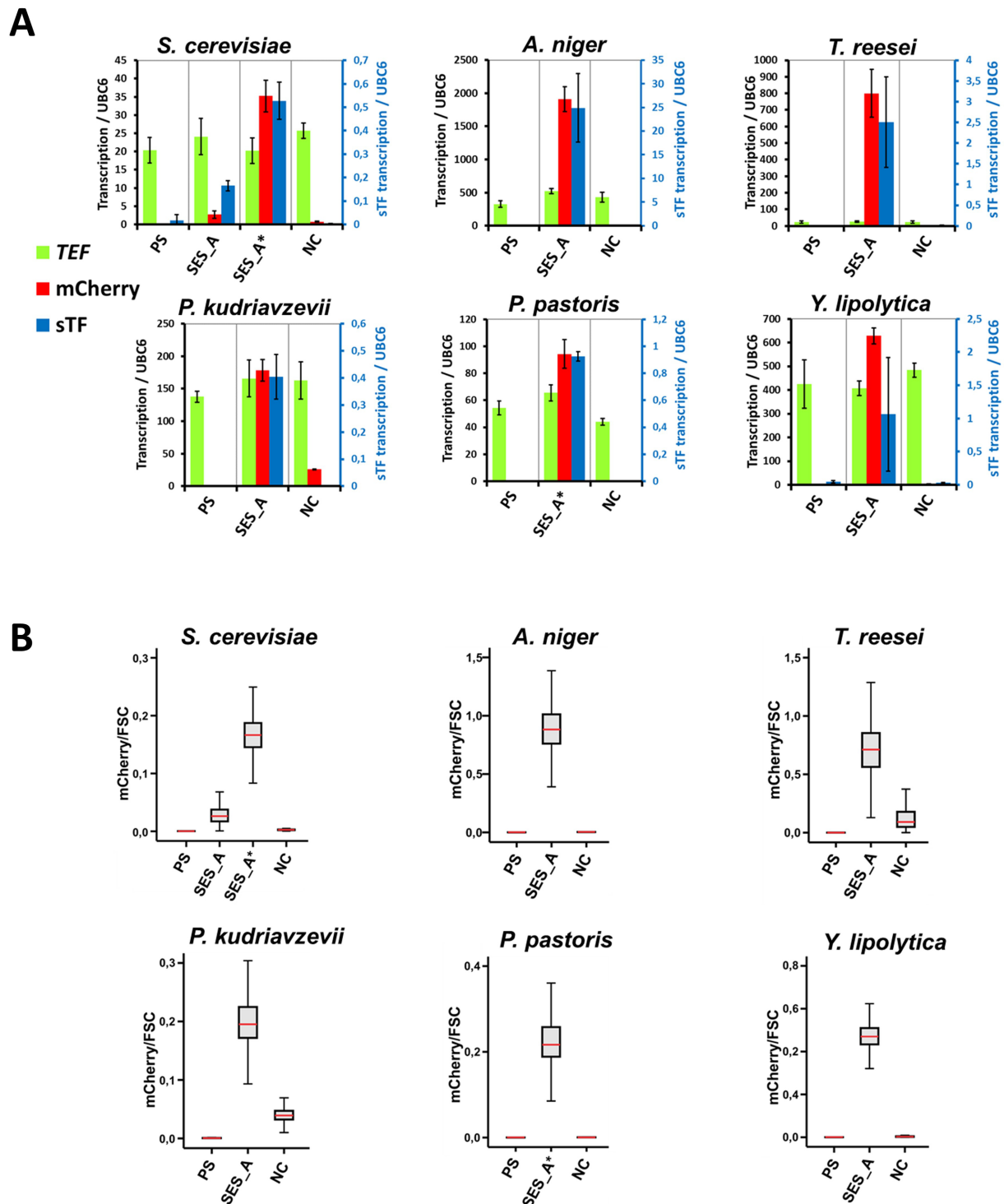


Figure 3. Quantification of the SES performance in fungal hosts. (A) Transcription analysis of the strains. The mCherry transcript levels were compared to the transcript levels of endogenous *TEF* genes in each host. Transcript levels of the sTF are shown on the secondary y-axis. PS denotes the parental strains (without SES). In *Saccharomyces cerevisiae*, in addition to the SES-A, also a modified version was tested having the *S. cerevisiae*-codon-optimized sTF gene, which is indicated by an asterisk (SES-A*). In *Pichia pastoris*, only the SES-A* version was used. The transcription of the *UBC6* gene homologs (Supplementary Table S9) in each species were used for normalization. Values and error bars represent the mean and standard deviation from two biological (four technical) replicates. (B) Analysis of mCherry expression by flow-cytometry. Flow-cytometry was performed on cells (yeast species) or conidia (filamentous fungi). The box plots show the fluorescence intensity (mCherry) normalized by the particle (cell/conidia) size (FSC—forward scatter) for ~10 000 cells/conidia from each strain. The horizontal red line (inside the grey box) represents the median value, the grey box represents the interquartile range (IQ range), the bottom line of grey box represents the 25% percentile value, the top line of grey box represents the 75% percentile value. The whiskers in box plot together with the IQ range, represent about 99% of all measured instances (cells/conidia) (for numerical values see Supplementary Figure S4A). Alternative fluorescence analysis of the strains was performed by quantitative fluorometry (Supplementary Figure S4B and C).

Cross-species expression level tuning by SES

Components of biological systems (enzymes in metabolic pathways, subunits in protein complexes, etc.) need to be expressed at specific, often very dissimilar, levels to ensure optimal performance. For this purpose, numerous expression systems have been developed (31) that provide adjustable expression levels of target genes. The expression levels can be controlled by employing differently strong native promoters or their modified versions (8,30). In heterologous expression systems, inducing agents regulating the transcription levels (1,3,8,9,32), or selected CPs, orthogonal transcription factors and their BS (1,3,6,10,33,34) have also been successfully utilized. However, all of these systems are host-specific. To test whether the SES system enables expression level adjustment in diverse organisms, we used two distantly related species, *P. kudriavzevii* and *A. niger*. The SES-A system was modified to contain zero, one, two, four or eight sTF-BS upstream of the mCherry gene (Figure 4A), and it was integrated in single copy into genomes of these hosts. Depending on the number of sTF BS, the mCherry mRNA levels in *P. kudriavzevii* varied from negligible (0 sTF BS) to levels comparable to *TEF1* (eight sTF BS) with about 40-fold expression range (Figure 4B). Notably, *P. kudriavzevii* is a diploid yeast where both alleles contribute to the transcription level of *TEF1*, as opposed to mCherry expression from a single SES-A cassette. In *A. niger*, expression levels varied from negligible to levels that exceeded 4-fold *tefA* expression with over a 9000-fold expression range (Figure 4B). Fluorescence flow cytometry analysis of *P. kudriavzevii* cells and *A. niger* conidia confirmed the adjustability of mCherry expression levels in these strains (Figure 4C).

SES enables improved protein production in *T. reesei*

To assess the utility of the SES system in an industrially relevant application, we employed *T. reesei*, which has the natural ability to secrete large amounts of proteins (35) and is commonly used for industrial production of enzymes (36). Typically, heterologous protein production is achieved by using the strong inducible *cbh1* promoter. The media inducing this promoter leads to simultaneous co-production of a high number of native cellulolytic enzymes (36). This results in increased downstream purification costs for the protein(s) of interest. Therefore, an expression system that enables high production levels in conditions where the broad induction of cellulolytic enzymes does not occur would be highly beneficial.

We modified the SES expression cassette by replacing the mCherry gene with a gene encoding *T. reesei* native cellobiohydrolase CBHI enzyme (Figure 5A). A *T. reesei* strain with two genome-integrated copies of the CBHI-SES cassette (SES-C) was tested in bioreactor cultivations. The SES-modified strain and the parental strain were cultivated either in a cellulase-inducing medium containing spent grain and lactose (SGM) commonly used for *cbh1*-promoter-driven production of proteins, or in a glucose-containing medium where the expression of large majority of native secreted enzymes (e.g. cellulases) is repressed. Both strains secreted highly similar protein mixtures (17.8 g/l and 17.6 g/l total protein on day 5, respectively) into the

culture medium in the cellulase-inducing conditions (Figure 5B). However, when the strains were grown in the presence of glucose, only a small amount of protein (1.2 g/l, on day 5) was secreted by the parental strain, whereas the SES strain secreted 5.9 g/l of protein, which consisted mainly of CBHI (~70% in contrast to ~30% in SGM). In addition, the amount of the CBHI protein produced by the SES strain on glucose was similar to the amount produced by the parental strain in inducing conditions (4.1 g/l and 4.8 g/l, respectively) (Figure 5C).

Transcription analysis of the bioreactor samples (Supplementary Figure S6) revealed principal differences in CBHI production in the parental and the SES strains. In the parental strain, *cbh1* transcription was strongly induced, albeit decreasing at latter stages of the culture in the SGM medium, as is typically observed (14). However, in the SES strain the *cbh1* transcription displayed a much more stable profile in both media.

SES functionality in novel organisms

Numerous microbes with highly promising properties are currently underutilized both in research and in biotechnological applications. This is mainly due to lack of tools for their genetic engineering, and related to this, the need for tedious development of such tools for each organism individually. We set out to test the usability of the SES system in engineering of two such organisms, the highly osmotolerant yeasts species *C. apicola* (37) and *Z. lentus* (38) that, to our knowledge, have not been genetically engineered previously. A genome sequence draft of *C. apicola* has been published (37); however, *Z. lentus* genome has not been sequenced. To circumvent this deficit, we performed partial genome sequence analysis of *Z. lentus* to obtain a suitable non-essential locus for SES cassette integration. To enable selection of transformants in these novel hosts the SES system was modified to allow selection marker gene (NAT) expression control by the sTF (Supplementary Figure S7A). The SES cassette integration in the genomes of these species resulted in strains, which were not only able to grow in the presence of nourseothricin, but showed strong and uniform mCherry fluorescence as monitored by fluorescent microscopy (Supplementary Figure S7B), and fluorometry analysis (Supplementary Figure S7C). This demonstrates the potential of the SES system beyond established hosts, and opens up possibilities to introduce new organisms for a broad range of applications.

DISCUSSION

Introducing novel production hosts to industrial processes is currently limited by the need to develop an expression system for each host individually. In addition, the host-specific DNA parts are not orthogonal to the native regulation and may require specific cultivation conditions for optimal function. For example, the use of native DNA parts may prohibit the use of the cheapest available media or may require supplementation of various inducer compounds. Therefore, an expression system that would circumvent these issues, and yet allow efficient expression control in any host is in great demand.

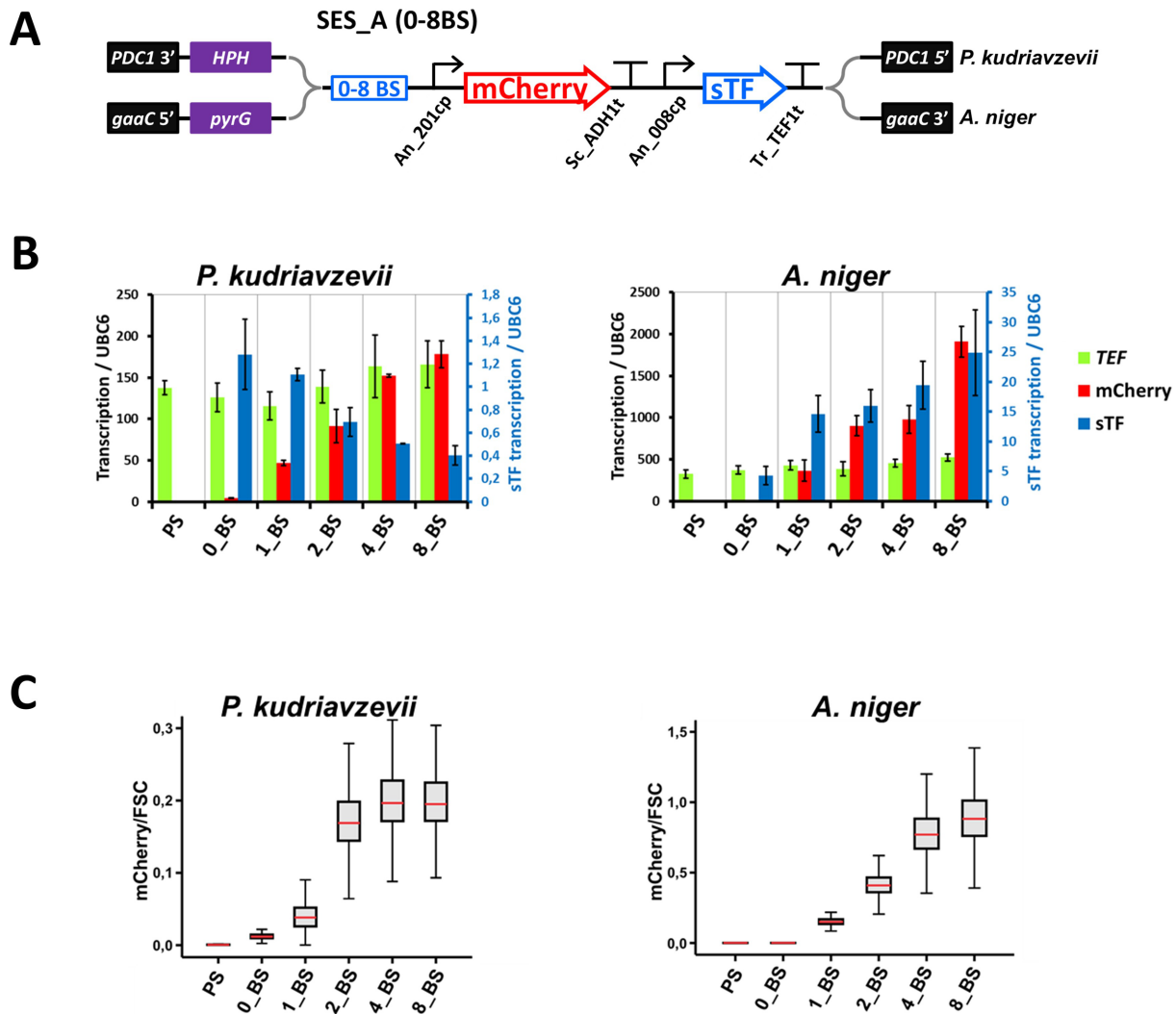


Figure 4. Expression level adjustability tests in *Pichia kudriavzevii* and *Aspergillus niger*. (A) A schematic presentation of the SES-A cassettes with zero to eight sTF-BS (0–8BS), including positions of selection markers and genome-integration flanks for *P. kudriavzevii* and *A. niger*. (B) Transcription analysis of the *P. kudriavzevii* and *A. niger* strains with the SES-A (0–8BS) systems. The mCherry, the *TEF* and the sTF transcript levels were monitored, and normalized to the transcript signal of the *UBC6* homologs as in the Figure 3B. PS denotes parental strain (without SES). Values and error bars represent the mean and standard deviation from two biological (four technical) replicates. (C) Analysis of the mCherry fluorescence by flow-cytometry measurements of *P. kudriavzevii* cells and *A. niger* conidia. The box plots show the same features as in Figure 3B. The analysis of the mCherry expression in *P. kudriavzevii* was also performed by quantitative fluorometry (Supplementary Figure S2D).

This work provides a solution by establishing a robust and transferable SES that is functional in a remarkably broad range of eukaryotic microbes. The SES system enables expression of target gene(s) at similar or higher levels than very strong endogenous promoters or conventional gene expression tools. In addition, the SES can be used for on-demand modulation of target gene(s) expression levels, hence offering novel possibilities in orthogonal control for metabolic engineering, protein production, or other bioengineering purposes. Without host-specific optimization, we demonstrate SES utility in six yeasts and two filamentous fungi covering several industrially relevant fungal genera. Thus, SES displays unprecedented functionality in gene expression regulation across a wide range of eukaryotic hosts.

The functionality in diverse hosts arises from the key elements of SES, the selected CPs. We identified the highly functional universal CPs for SES by screening CPs from filamentous fungi (*A. niger* and *T. reesei*) in *S. cerevisiae* (Figure 1B and C) and found candidates, which proved to be highly functional as universal CPs. The candidate CPs were chosen based on the presence of a TATA-box in their structure, and on the relative level of gene expression, where these CPs are part of the promoter. Indeed, most eukaryotic promoters do not contain a canonical TATA-box (39–41) and it is likely that many of the so called ‘TATA-box-less’ CPs might also be universally functional. There were two features of the screened CPs essential for their use in the SES system: (i) ability to provide high transcription level of the target gene, when incorporated in the sTF-dependent promoter, and (ii) sufficient basal transcription activity, when

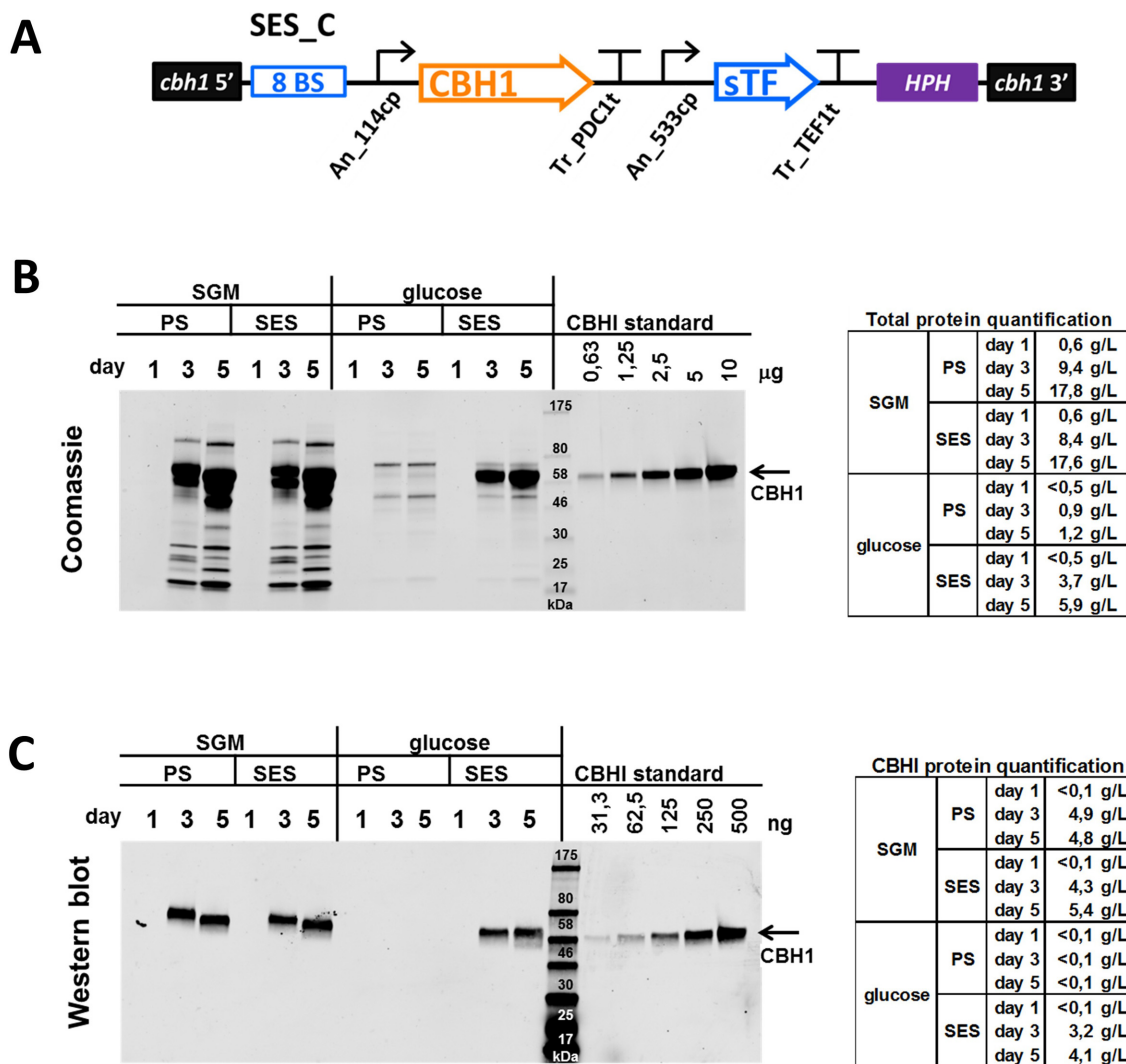


Figure 5. SES-based production of CBHI protein in *Trichoderma reesei*. (A) A schematic presentation of the SES-C cassette, including position of the HPH selection marker and *cbh1*-locus genome-integration flanks, used for production of the CBHI enzyme in *T. reesei*. (B) The analysis of total protein produced (secreted) in bioreactor cultivations of *T. reesei*. The parental (PS) as well as the SES strain were cultivated in cellulase-inducing medium (containing lactose and spent grain, SGM), and repressing medium (containing glucose). Culture media samples were analysed for total produced protein by SDS-PAGE gel and Coomassie staining (left panel). The total protein concentrations were calculated based on the purified CBHI protein standard (right panel). (C) The analysis of the CBHI protein produced (secreted) in bioreactor cultivations of *T. reesei*. The samples of B) were analysed by a western blot (left panel) with a specific anti-CBHI (mab261) antibody. The CBHI concentrations were calculated based on the purified CBHI protein standard (right panel).

used as a sole control element for the sTF expression. These two characteristics seemed to be positively correlated for majority of the tested CPs (Figure 1C).

We demonstrated that the SES system can provide superior performance in providing constitutive and high expression levels in diverse hosts. In fact, the expression levels achieved by the SES were considerably higher than expression levels of many established expression systems (commonly used native promoters) in the tested fungal hosts (Supplementary Figure S5). In addition, in *A. niger* and *T. reesei*, the SES enabled expression in conidia, hyphae and other tissues (*A. niger* conidiophore) (Supplementary Figure S1) indicating unprecedented stability of the expression outputs. This is in marked contrast e.g. to the activity of the native *T. reesei cbh1* promoter that is commonly used for industrial production of heterologous proteins in

T. reesei. The expression of mCherry under the *cbh1* promoter resulted in a strong fluorescence signal only in *T. reesei* mycelia but not in conidia in the *cbh1*-inducing conditions (Supplementary Figure S1).

In many cases, protein purification costs may comprise up to 90% of the manufacturing costs. Thus, simplification of down-stream processing, for instance—by enhancing the purity of the product, could result in substantial savings. We used the SES system in the filamentous fungus *T. reesei* for production of a widely used industrial enzyme, cellobiohydrolase I (CBHI) and demonstrated high-level production (secretion into culture medium) of this protein in the presence of glucose (Figure 5). With this strategy we were able to produce significantly purer protein at levels comparable to the levels achieved by the well-established *cbh1* promoter. This indicates that SES can enable high production levels

for desired enzymes, or even tailored enzyme mixtures, without undesirable background activities in *T. reesei*. It should be emphasized that the SES system was not optimized for *T. reesei*, and the target gene transcription levels obtained were significantly lower than the maximal transcription levels with the fully induced *cbh1* promoter (Supplementary Figure S4). The constitutive nature of the SES-controlled expression, however, provided means for a high final production titer of the CBHI protein. It is possible that other CPs, optimized for use in *T. reesei* would allow a stronger transcription output and improved production.

In contrast to protein production, synthesis of biochemicals in microbial fermentations involves enzymatic pathways to convert a substrate to a target compound. Efficient conversion requires the individual enzymes of a pathway to be present in optimal proportions to ensure maximal flux through the pathway. Highly dissimilar expression levels of the pathway enzymes may be needed, especially if some heterologous enzymes confer poor performance in the given host (42). Our results provide strong evidence that SES allows expression level tuning in diverse hosts, as demonstrated in *P. kudriavzevii* and *A. niger* (Figure 4B and C) with identical expression cassettes. In addition, the finely graded expression pattern was retained in *A. niger* in mycelium grown in liquid culture (Figure 4B) as well as in conidia formed on solid media (Figure 4C). This implies that the SES system allows, in multiple hosts, fine-tuned metabolic pathway optimization that is essential to reach industrially feasible production levels.

The genetic stability of an expression system is a key feature for any successful application. To reduce the probability for recombination between repetitive sTF-binding-sites, the SES system was designed to contain variable DNA-linkers between the individual BS. In addition, the sTF-BS can also be modified by introducing mutations, which can increase the variability, but do not negatively affect the sTF binding. We tested the stability of the SES performance in extended cultivations, and found no signs of expression level decline during repeated serial cultures over one week (Supplementary Figure S8).

Future development of industrial biotechnology will need introduction of novel production hosts. The need for new organisms is motivated by numerous factors, including use of novel substrates or production conditions (often harsh or toxic biomass hydrolysates/sidestream fractions), need for specific metabolic or physiological features, IPR issues, etc. However, introducing new hosts with superior native characteristics into a bioprocess can be a costly endeavour, especially if the development and establishment of expression tools has to be undertaken to genetically engineer the novel organism. We demonstrate with two little studied yeast species, *C. apicola* and *Z. lentus*, that SES provides an important, enabling tool for the establishment of new industrial hosts. In order to achieve selection of transformed colonies, and without prior knowledge about native or functional promoters in these species, we extended the SES system with a selectable marker gene to create a fully autonomous, universal expression system (Supplementary Figure S5A). By obtaining highly fluorescent colonies, we were able to demonstrate that the SES system can be used

for high-level gene expression control also in these previously unexploited hosts.

In conclusion, the SES system is ready to be applied for studies investigating biological phenomena in a broad range of eukaryotic microorganisms that have previously been lacking gene expression tools. At the same time, SES can be used to optimize industrial production hosts, and increase the number of engineerable organisms that exhibit advantageous properties for biotechnological applications.

SUPPLEMENTARY DATA

Supplementary Data are available at NAR Online.

ACKNOWLEDGEMENTS

We thank Mikko Arvas for valuable help in analysing the filamentous fungal transcriptomics data for the CP selection, and Toni Paasikallio, Merja Helanterä and Oriane Vedrines for excellent technical assistance. We thank Paula Jouhten and Robert Pykkänen for critical comments on the manuscript.

Author Contributions: D.M., A.R., C.P.L. and J.J. conceived the study and analysed the results; A.R. and D.M. conducted and performed most of the experiments, C.P.L. conducted the bioreactor cultivations; J.K. performed the transcription analysis in *A. niger*; A.K. performed the transcription analysis in *T. reesei*; L.R. performed the fluorescence microscopy; O.K. performed part of the yeast experiments; M.V. constructed SES-CBHI-producing *T. reesei* strain; J.J., D.M., A.R., C.P.L. and M.P. wrote the manuscript.

FUNDING

Finnish Funding Agency for Innovation (TEKES) (Living factories project) [562/31/2014]; Academy of Finland [260957, 272550].

Conflict of interest statement. SES has been granted a patent (Finnish patent (FI127283B) 15 March 2018) and is the subject of patent applications (PCT/FI2017/050114 on 21 February 2017 and 015234 US on 18 December 2017) by D.M., A.R., J.J., C.P.L. and J.K.

REFERENCES

- McIsaac, R.S., Gibney, P.A., Chandran, S.S., Benjamin, K.R. and Botstein, D. (2014) Synthetic biology tools for programming gene expression without nutritional perturbations in *Saccharomyces cerevisiae*. *Nucleic Acids Res.*, **42**, e48.
- McIsaac, R.S., Oakes, B.L., Wang, X., Dummit, K.A., Botstein, D. and Noyes, M.B. (2013) Synthetic gene expression perturbation systems with rapid, tunable, single-gene specificity in yeast. *Nucleic Acids Res.*, **41**, e57.
- Ottoz, D.S., Rudolf, F. and Stelling, J. (2014) Inducible, tightly regulated and growth condition-independent transcription factor in *Saccharomyces cerevisiae*. *Nucleic Acids Res.*, **42**, e130.
- Liang, J., Ning, J.C. and Zhao, H. (2013) Coordinated induction of multi-gene pathways in *Saccharomyces cerevisiae*. *Nucleic Acids Res.*, **41**, e54.
- Mazumder, M. and McMillen, D.R. (2014) Design and characterization of a dual-mode promoter with activation and repression capability for tuning gene expression in yeast. *Nucleic Acids Res.*, **42**, 9514–9522.

6. Ito, Y., Yamanishi, M., Ikeuchi, A. and Matsuyama, T. (2015) A highly tunable system for the simultaneous expression of multiple enzymes in *Saccharomyces cerevisiae*. *ACS Synth. Biol.*, **4**, 12–16.
7. Sadowski, I., Ma, J., Triezenberg, S. and Ptashne, M. (1988) GAL4-VP16 is an unusually potent transcriptional activator. *Nature*, **335**, 563–564.
8. Blount, B.A., Weenink, T., Vasylechko, S. and Ellis, T. (2012) Rational diversification of a promoter providing fine-tuned expression and orthogonal regulation for synthetic biology. *PLoS One*, **7**, e33279.
9. Belli, G., Gari, E., Piedrafito, L., Aldea, M. and Herrero, E. (1998) An activator/repressor dual system allows tight tetracycline-regulated gene expression in budding yeast. *Nucleic Acids Res.*, **26**, 942–947.
10. Rantasalo, A., Czeizler, E., Virtanen, R., Rousu, J., Lahdesmaki, H., Penttila, M., Jantti, J. and Mojzita, D. (2016) Synthetic transcription amplifier system for orthogonal control of gene expression in *Saccharomyces cerevisiae*. *PLoS One*, **11**, e0148320.
11. Oldenburg, K.R., Vo, K.T., Michaelis, S. and Paddon, C. (1997) Recombination-mediated PCR-directed plasmid construction in vivo in yeast. *Nucleic Acids Res.*, **25**, 451–452.
12. Raymond, C.K., Pownder, T.A. and Sexson, S.L. (1999) General method for plasmid construction using homologous recombination. *Biotechniques*, **26**, 134–141.
13. Kuivainen, J., Wang, Y.J. and Richard, P. (2016) Engineering *Aspergillus niger* for galactaric acid production: elimination of galactaric acid catabolism by using RNA sequencing and CRISPR/Cas9. *Microb. Cell Fact.*, **15**, 210.
14. Pakula, T.M., Nygren, H., Barth, D., Heinonen, M., Castillo, S., Penttila, M. and Arvas, M. (2016) Genome wide analysis of protein production load in *Trichoderma reesei*. *Biotechnol. Biofuels*, **9**, 132.
15. Gietz, R.D. and Woods, R.A. (2002) Transformation of yeast by lithium acetate/single-stranded carrier DNA/polyethylene glycol method. *Methods Enzymol.*, **350**, 87–96.
16. Penttila, M., Nevalainen, H., Ratto, M., Salminen, E. and Knowles, J. (1987) A versatile transformation system for the cellulolytic filamentous fungus *Trichoderma reesei*. *Gene*, **61**, 155–164.
17. Teste, M.A., Duquenne, M., Francois, J.M. and Parrou, J.L. (2009) Validation of reference genes for quantitative expression analysis by real-time RT-PCR in *Saccharomyces cerevisiae*. *BMC Mol. Biol.*, **10**, 99.
18. Bailey, M.J. and Tahitiharju, J. (2003) Efficient cellulase production by *Trichoderma reesei* in continuous cultivation on lactose medium with a computer-controlled feeding strategy. *Appl. Microbiol. Biotechnol.*, **62**, 156–162.
19. Albright, S.R. and Tjian, R. (2000) TAFs revisited: more data reveal new twists and confirm old ideas. *Gene*, **242**, 1–13.
20. Burley, S.K. and Roeder, R.G. (1996) Biochemistry and structural biology of transcription factor IID (TFIID). *Annu. Rev. Biochem.*, **65**, 769–799.
21. Palmer, C.N., Axen, E., Hughes, V. and Wolf, C.R. (1998) The repressor protein, Bm3R1, mediates an adaptive response to toxic fatty acids in *Bacillus megaterium*. *J. Biol. Chem.*, **273**, 18109–18116.
22. Stanton, B.C., Nielsen, A.A., Tamsir, A., Clancy, K., Peterson, T. and Voigt, C.A. (2014) Genomic mining of prokaryotic repressors for orthogonal logic gates. *Nat. Chem. Biol.*, **10**, 99–105.
23. Stanton, B.C., Siciliano, V., Ghodasara, A., Wroblewska, L., Clancy, K., Trefzer, A.C., Chesnut, J.D., Weiss, R. and Voigt, C.A. (2014) Systematic transfer of prokaryotic sensors and circuits to mammalian cells. *ACS Synth. Biol.*, **3**, 880–891.
24. Rantasalo, A., Kuivainen, J., Penttila, M., Jantti, J. and Mojzita, D. (2018) Synthetic toolkit for complex genetic circuit engineering in *Saccharomyces cerevisiae*. *ACS Synth. Biol.*, **7**, 1573–1587.
25. Matsushika, A., Negi, K., Suzuki, T., Goshima, T. and Hoshino, T. (2016) Identification and characterization of a novel *Issatchenkia orientalis* GPI-Anchored protein, IoGas1, required for resistance to low pH and salt stress. *PLoS One*, **11**, e0161888.
26. Sasikumar, A.N., Perez, W.B. and Kinzy, T.G. (2012) The many roles of the eukaryotic elongation factor 1 complex. *Wiley Interdiscip. Rev. RNA*, **3**, 543–555.
27. Partow, S., Siewers, V., Bjorn, S., Nielsen, J. and Maury, J. (2010) Characterization of different promoters for designing a new expression vector in *Saccharomyces cerevisiae*. *Yeast*, **27**, 955–964.
28. Muller, S., Sandal, T., Kamp-Hansen, P. and Dalboge, H. (1998) Comparison of expression systems in the yeasts *Saccharomyces cerevisiae*, *Hansenula polymorpha*, *Kluyveromyces lactis*, *Schizosaccharomyces pombe* and *Yarrowia lipolytica*. Cloning of two novel promoters from *Yarrowia lipolytica*. *Yeast*, **14**, 1267–1283.
29. Zhang, A.L., Luo, J.X., Zhang, T.Y., Pan, Y.W., Tan, Y.H., Fu, C.Y. and Tu, F.Z. (2009) Recent advances on the GAP promoter derived expression system of *Pichia pastoris*. *Mol. Biol. Rep.*, **36**, 1611–1619.
30. Blumhoff, M., Steiger, M.G., Marx, H., Mattanovich, D. and Sauer, M. (2012) Six novel constitutive promoters for metabolic engineering of *Aspergillus niger*. *Appl. Microbiol. Biotechnol.*, **97**, 259–267.
31. Leavitt, J.M. and Alper, H.S. (2015) Advances and current limitations in transcript-level control of gene expression. *Curr. Opin. Biotechnol.*, **34**, 98–104.
32. Meyer, V., Wanka, F., van Gent, J., Arentshorst, M., van den Hondel, C.A. and Ram, A.F. (2011) Fungal gene expression on demand: an inducible, tunable, and metabolism-independent expression system for *Aspergillus niger*. *Appl. Environ. Microbiol.*, **77**, 2975–2983.
33. Leavitt, J.M., Tong, A., Tong, J., Pattie, J. and Alper, H.S. (2016) Coordinated transcription factor and promoter engineering to establish strong expression elements in *Saccharomyces cerevisiae*. *Biotechnol. J.*, **11**, 866–876.
34. Redden, H. and Alper, H.S. (2015) The development and characterization of synthetic minimal yeast promoters. *Nat. Commun.*, **6**, 7810.
35. Cherry, J.R. and Fidantsef, A.L. (2003) Directed evolution of industrial enzymes: an update. *Curr. Opin. Biotechnol.*, **14**, 438–443.
36. Saloheimo, M. and Pakula, T.M. (2012) The cargo and the transport system: secreted proteins and protein secretion in *Trichoderma reesei* (*Hypocrea jecorina*). *Microbiology*, **158**, 46–57.
37. Vega-Alvarado, L., Gomez-Angulo, J., Escalante-Garcia, Z., Grande, R., Gschaedler-Mathis, A., Amaya-Delgado, L., Sanchez-Flores, A. and Arrizon, J. (2015) High-quality draft genome sequence of *Candida apicola* NRRL Y-50540. *Genome Announc.*, **3**, e00437-15.
38. Steels, H., James, S.A., Roberts, I.N. and Stratford, M. (1999) *Zygosaccharomyces lentus*: a significant new osmophilic, preservative-resistant spoilage yeast, capable of growth at low temperature. *J. Appl. Microbiol.*, **87**, 520–527.
39. Basehoar, A.D., Zanton, S.J. and Pugh, B.F. (2004) Identification and distinct regulation of yeast TATA box-containing genes. *Cell*, **116**, 699–709.
40. Yang, C., Bolotin, E., Jiang, T., Sladek, F.M. and Martinez, E. (2007) Prevalence of the initiator over the TATA box in human and yeast genes and identification of DNA motifs enriched in human TATA-less core promoters. *Gene*, **389**, 52–65.
41. Zuo, Y.C. and Li, Q.Z. (2011) Identification of TATA and TATA-less promoters in plant genomes by integrating diversity measure, GC-Skew and DNA geometric flexibility. *Genomics*, **97**, 112–120.
42. Du, J., Yuan, Y., Si, T., Lian, J. and Zhao, H. (2012) Customized optimization of metabolic pathways by combinatorial transcriptional engineering. *Nucleic Acids Res.*, **40**, e142.