

CASE REPORT

Bertolotti's syndrome: an underdiagnosed cause for lower back pain

Francisco Alonzo^{1,*}, Andres Cobar², Mario Cahueque²,
and Jose Antonio Prieto¹

¹Hospital "Ceibal" de Accidentes, Guatemalan Social Security Institute, Guatemala, Guatemala and ²Hospital Centro Médico, Guatemala, Guatemala

*Correspondence address. Tel: +502-531-1446; E-mail: Francisco.alonzo.gonzalez@gmail.com

Abstract

Bertolotti's syndrome refers to the presence of pain associated to the anatomical variant of sacralization of the last lumbar vertebra. It is often a factor that is not addressed in the evaluation and treatment of lower back pain. The presence of a lumbosacral transitional vertebra is a common finding among general population with a prevalence that ranges between 4 and 30%, however, this finding is rarely associated to the cause of lower back pain and thus, the prevalence of Bertolotti's syndrome in general population is unknown due to underdiagnosis. The sacralization of the fifth lumbar vertebra has been related to changes in the anatomy and biomechanics of the spine with no general agreement to its clinical significance, however Bertolotti's syndrome should be considered as a differential diagnosis for lower back pain, therefore, its pathophysiology, epidemiology and treatment must be a topic of general knowledge to physicians that often treat this condition.

INTRODUCTION

Bertolotti's syndrome (BS) refers to the presence of pain associated to the anatomical variant of the presence of a lumbosacral transitional vertebra (LSTV). It is recognized when an elongated transverse process of the last lumbar vertebra fuses with the first sacral segment in variable degrees and this anomaly is recognized as a mechanical cause for lower back pain [1].

The assimilation of the fifth lumbar vertebra by the sacrum was first described by Bertolotti in the year of 1917. He was the first author to relate this finding to low back pain. LSTV are congenital anomalies defined as either sacralization of the lowest lumbar segment or lumbarization of the highest sacral segment [1]. Castelvi's divides the pathology in four groups according to the development of the transverse process [2] (Table 1). We present a patient with this condition

that had persistent pain that only resolved after injection with local corticosteroids.

CASE REPORT





A 42-year-old female presented to the clinic with a history of chronic low back pain. She reported no relevant medical history. She had already been treated in the last 4 years by general practitioners with analgesics and home based physiotherapy with no satisfactory results. She had two previous admissions to the emergency department where morphine was prescribed to control the pain on her lower back. She was under ambulatory treatment with diclofenac, and tizanidine with partial relief of symptoms. Her main complaint was pain on the lower lumbar back with no radiation to the lower extremities. In her physical evaluation she presented limitation to full rotation and bending of the lumbar spine due to pain. Lasegue sign was negative,

Received: July 9, 2018. Accepted: October 5, 2018

Published by Oxford University Press and JSCR Publishing Ltd. All rights reserved. © The Author(s) 2018.

This is an Open Access article distributed under the terms of the Creative Commons Attribution Non-Commercial License (<http://creativecommons.org/licenses/by-nc/4.0/>), which permits non-commercial re-use, distribution, and reproduction in any medium, provided the original work is properly cited. For commercial re-use, please contact journals.permissions@oup.com

Table 1 Castellvi's classification for lumbosacral transitional vertebrae.

Castellvi's classification			
Type	Description	Anatomic features	Example
Type I	Displastic transverse process	Unilateral (a) or bilateral (b) large transverse process (>19 mm wide).	 Type 1a
Type II	Incomplete lumbarization/sacralization	Enlarged transverse process, with unilateral (a) or bilateral (b) pseudoarthrosis with the sacral ala.	 Type IIa
Type III	Complete lumbarization/sacralization	Enlarged transverse process, with unilateral (a) or bilateral (b) complete fusion with the sacral ala.	 Type IIIa
Type IV	Mixed	Type IIa on one side and type IIIa on the other	 Type IV

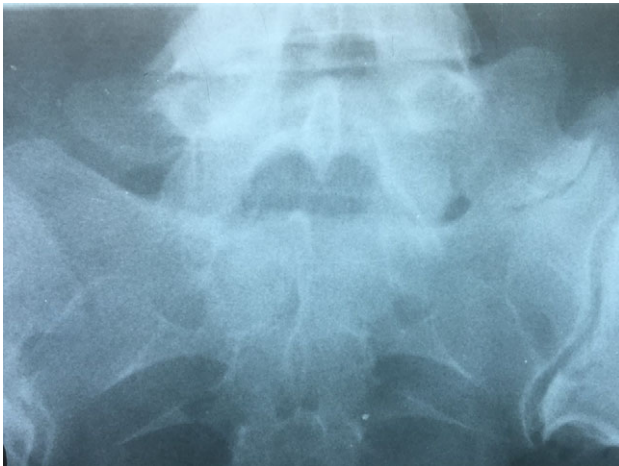


Figure 1: Radiographs showing an overdeveloped left transverse process, which contacts with the sacrum left sacral wing (Castelvi's Type IIa).

sensitivity, reflexes, sagittal balance, distal muscular strength and pulses were normal. Radiographs showed an overdeveloped left transverse process of the fifth lumbar vertebra which contacts with the sacrum at the left sacral wing with signs of degeneration at the same site (Fig. 1). Magnetic resonance imaging (MRI) studies were obtained (Figs 2-5). The patient was taken to the operating room where infiltration with 1 mL of lidocaine and 40 mg of Triamcinolone was performed in the pseudoarticulation between the left transverse process and the sacrum under fluoroscopic guidance. She reported a complete relief of pain after the procedure. At three months follow-up she was managed with strengthening and stabilizing exercises for the lumbar



Figure 2: RMN of the patient showing smaller facets in the anomalous articulation and healthy disc compared to the supradjacent one (next figure).



Figure 5: Showing the protective effect of the limitation of the motion in the distal disc to the anomaly.

radicular involvement. An extended surgical approach will be necessary in patients with persistent pain. New techniques such as 3D guided surgery and minimally invasive procedures can be applied to this pathology with good results [8–10].

CONCLUSION

Bertolotti's syndrome is a frequent anomaly which can be related to lower back pain. It should be considered as a differential diagnosis when confronting a patient with compatible radiographic findings and persistent back pain. Confirmation of

pain originating from the pseudoarticulation can be made with steroid injections.

CONFLICT OF INTEREST STATEMENT

None declared.

REFERENCES

1. Jancuska J, Spivak J, Bendo J. A review of symptomatic lumbosacral transitional vertebrae: Bertolotti's syndrome. *Int J Spine Surg* 2015;9:1–18.
2. Castellvi A, Goldstein L, Chan D. Lumbosacral transitional vertebrae and their relationship with lumbar extradural defects. *Spine* 1984;9:493–5.
3. Kapetanakis S, Chaniotakis C, Paraskevopoulos C, Pavlidis P. An unusual case report of Bertolotti's syndrome: extraforaminal stenosis and L5 unilateral root compression (Castellvi Type III an LSTV). *J Orthop Case Rep* 2017;7:9–12.
4. Adams R, Herrera-Nicol S, Jenkins A. Surgical treatment of a rare presentation of Bertolotti's syndrome from Castellvi Type IV lumbosacral transitional vertebra: case report and review of the literature. *J Neurol Surg Rep* 2018;79:e70–4.
5. Neelakantan S, Anandarajan R, Shyam K, Philip B. Multimodality imaging in Bertolotti's syndrome: an important cause of low back pain in young adults. *BMJ Case Rep* 2016;2016.
6. Benvenuto P, Benvenuto N. Bertolotti's syndrome: a transitional anatomic cause of low back pain. *Intern Emerg Med* 2018. <https://www.ncbi.nlm.nih.gov/pubmed/30022398>.
7. Kundi M, Habib M, Babar S, Kundi A, Assad S, Sheikh A. Transitional vertebra and spina bifida occulta related with chronic low back pain in a young patient. *Cureus* 2016;8:e837.
8. Chang I, Won Kim S, Gyue Kim J, Myung Lee S, Shin H, Young Lee H. Decompressive L5 transverse processotomy for Bertolotti's syndrome: a preliminary study. *Pain Physician* 2017;20:E923–32.
9. Babu H, Lagman C, Kim T, Grode M, Johnson P, Drazin D. Intraoperative navigation guided resection of anomalous transverse process in patients with Bertolotti's syndrome. *Surg Neurol Int* 2017;8:236.
10. Kongsted E, Bungler C, Bindzus C. Symptomatic lumbosacral transitional vertebra: a review of the current literature and clinical outcomes following steroid injection or surgical intervention. *SICOT J* 2017;3:71.