

**TECHNIQUE**

A damp swab is placed over the top of the laser fibre on the patient's elevated leg (Fig 1). This allows the fibre to move back and forth but prevents it from falling on to the floor. A modification of this method involves cutting a 20-cm length from the plastic sheath packaging of the fibre and securing it to the drape over the leg (Fig 2). These two techniques can be combined to control redundant fibre length.

**Lone Star retractor and elastic band compression dressing for urethroplasty**

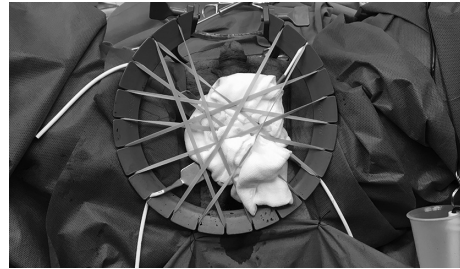
**A Chetwood, J Aspinall**

Urology Department, Royal Adelaide Hospital, Adelaide, South Australia

**CORRESPONDENCE TO**

**Andrew Chetwood**, E: [andrewchetwood@doctors.org.uk](mailto:andrewchetwood@doctors.org.uk)  
doi 10.1308/rcsann.2018.0092

Following urethral mobilisation, there is a period of inactivity while buccal mucosal graft harvest occurs during urethral reconstructive



**Figure 1** Sterile elastic bands providing compressing to packs covering the wound

surgery. During this time, we apply sterile elastic bands across the already sited Lone Star retractor to provide compression to packs covering the perineal wound (Fig 1). This gives the ideal compression for haemostasis without risking damage to the underlying tissues. Other surgeons might find this technique useful for other types of perineal surgery.