

RESEARCH ARTICLE

The proteomic and metabolomic characterization of exercise-induced sweat for human performance monitoring: A pilot investigation

Sean W. Harshman^{1*}, Rhonda L. Pitsch², Zachary K. Smith¹, Maegan L. O'Connor³, Brian A. Geier⁴, Anthony V. Qualley¹, Nicole M. Schaeublin¹, Molly V. Fischer³, Jason J. Eckerle⁵, Adam J. Strang⁴, Jennifer A. Martin⁴

1 UES Inc., Air Force Research Laboratory, Wright-Patterson Air Force Base, Ohio, United States of America, **2** The Henry M. Jackson Foundation for the Advancement of Military Medicine, Air Force Research Laboratory, Wright-Patterson Air Force Base, Ohio, United States of America, **3** Oak Ridge Institute of Science & Education, Air Force Research Laboratory, Wright-Patterson Air Force Base, Ohio, United States of America, **4** Air Force Research Laboratory, Wright-Patterson Air Force Base, Ohio, United States of America, **5** InfoSciTex Corp., Air Force Research Laboratory, Wright-Patterson Air Force Base, Ohio, United States of America

* sean.harshman.ctr@us.af.mil



OPEN ACCESS

Citation: Harshman SW, Pitsch RL, Smith ZK, O'Connor ML, Geier BA, Qualley AV, et al. (2018) The proteomic and metabolomic characterization of exercise-induced sweat for human performance monitoring: A pilot investigation. *PLoS ONE* 13 (11): e0203133. <https://doi.org/10.1371/journal.pone.0203133>

Editor: John Matthew Koomen, H Lee Moffitt Cancer Center and Research Institute, UNITED STATES

Received: May 18, 2018

Accepted: August 15, 2018

Published: November 1, 2018

Copyright: This is an open access article, free of all copyright, and may be freely reproduced, distributed, transmitted, modified, built upon, or otherwise used by anyone for any lawful purpose. The work is made available under the [Creative Commons CC0](https://creativecommons.org/licenses/by/4.0/) public domain dedication.

Data Availability Statement: Data are available from the Metabolomics workbench under project PR000715, which has three parts. The DOI is as follows: <https://doi.org/10.21228/M8839T>.

Funding: The funders, UES Inc. and InfoSciTex Corp., are commercial companies who provided support in the form of salaries for authors, SWH, ZKS, AVQ, NMS, JJE. United States Air Force provided support for this work via subcontract to

Abstract

Sweat is a biofluid with several attractive attributes. However, investigation into sweat for biomarker discovery applications is still in its infancy. To add support for the use of sweat as a non-invasive media for human performance monitoring, volunteer participants were subjected to a physical exertion model using a treadmill. Following exercise, sweat was collected, aliquotted, and analyzed for metabolite and protein content via high-resolution mass spectrometry. Overall, the proteomic analysis illustrates significant enrichment steps will be required for proteomic biomarker discovery from single sweat samples as protein abundance is low in this medium. Furthermore, the results indicate a potential for protein degradation, or a large number of low molecular weight protein/peptides, in these samples. Metabolomic analysis shows a strong correlation in the overall abundance among sweat metabolites. Finally, hierarchical clustering of participant metabolite abundances show trends emerging, although no significant trends were observed ($\alpha = 0.8$, $\lambda = 1$ standard error via cross validation). However, these data suggest with a greater number of biological replicates, stronger, statistically significant results, can be obtained. Collectively, this study represents the first to simultaneously use both proteomic and metabolomic analysis to investigate sweat. These data highlight several pitfalls of sweat analysis for biomarker discovery applications.

Introduction

Sweat is a biofluid that can be passively and non-invasively collected with potential links to important physiological states, such as hydration, that are known to impact human physical

UES Inc. (FA8650-14-D-6516). The funders had no role in study design, data collection and analysis, decision to publish, or preparation of the manuscript.

Competing interests: The funders, UES Inc. and InfoSciTex Corp., are commercial companies who provided support in the form of salaries for authors, SWH, ZKS, AVQ, NMS, JJE, but did not have any additional role in the study design, data collection and analysis, decision to publish, or preparation of the manuscript. The specific roles of these authors are articulated in the 'author contributions' section. Affiliation with these commercial entities does not alter adherence to all PLOS ONE policies on sharing data and materials.

and cognitive performance [1]. As the push intensifies to develop wearable electronics for real-time physiological and performance-based monitoring, sweat offers an extremely attractive matrix for continuous non-invasive sample collection to fit this need. For example, integration of a real-time performance feedback mechanism, via sweat analyte monitoring, within a smart watch format would potentially provide wearers an array of information allowing for knowledge-based decision making on a personal level, such as the need for rehydration, onset of fatigue, etc. For these reasons, sweat has come to the forefront of biomarker discovery research.

Although human sweat has been studied for several decades, excreted sweat still remains an often-overlooked media source for biomarker discovery due to the relatively low abundance of analytes [2,3]. Sweat has been shown to be composed of low quantities of electrolytes, small molecules, proteins, and lipids [2–4]. The majority of sweat research has revolved around pH, chloride ions, sodium ions, potassium ions, ammonia, urea and lactate [5–27]. However, recently, discovery approaches such as mass spectrometry and NMR spectroscopy have been applied to expand our understanding of this media [28–41].

Studies on the proteomic and metabolomic content of sweat suggest both analytes are in low abundance dominated primarily by defense related proteins and amino acids [29–43]. Although relatively few proteins have been identified compared to other media sources, such as blood or tissue lysates, several groups report the potential for this media to hold proteins for biomarker discovery [29,30,34]. For example, Raiszadeh et al. show evidence for differential abundance of sweat proteins between control and schizophrenia patients [29]. Additionally, active tuberculosis has been shown to have a more diverse sweat proteome than healthy controls [34]. Similarly, sweat metabolomics has provided evidence for lung cancer diagnostics [38,39]. Additionally, the same group showed differences in metabolomic abundances between active (exercise) and passive (stimulated) sweat [36]. Collectively, these results support the hypothesis that sweat may hold proteomic and/or metabolomic biomarkers.

Establishing the link between sweat analytes and human performance will facilitate a better understanding of the mechanisms through which analytes influence and/or reflect the outcomes of performance. Furthermore, this information will allow for building predictive models of performance through which analyte abundance can be turned into 'actionable' information via feedback.

Materials and methods

Participants

The human participants (n = 11) for this study were volunteer active duty military stationed at Wright-Patterson Air Force Base (S1 Table). All participants were required to be between the ages of 18 to 45, have no duty restrictions, and not be on medical profile for injury or illness. All recruitment and data collection procedures were approved by the Air Force Research Laboratory Institutional Review Board (FWR2018007E) prior to initiation of the experiment. Following explanation of the experimental design, consent from each participant was obtained, including acknowledgment of the participant's ability to leave the study at any time.

March protocol

The exercise laboratory was monitored for temperature (n = 9, mean 22.20°C ± 0.15°C) and humidity (mean 0.2% ± 0.0%) via Kestrel 4500NV weather tracker (Minneapolis, MN, USA). Refer to S1 Fig for representative temperature plots.

Participants took part in two experimental sessions (A and B) separated by at least two days. The order of sessions was mixed and was completed based on participant availability. Session A: participants completed a VO₂ max treadmill test using the Bruce protocol [44,45].

This test was used to determine participants' aerobic capacity, ventilatory threshold, and maximum HR (bpm). Please refer to [S2 Fig](#) for a summary of the results. Session B: Participants were given a questionnaire to assess their regular exercise frequency and sleep duration ([S2 Fig](#)). Volunteers were randomly assigned to one of three test conditions: low, moderate and high intensity ([S2 Fig](#)). Following condition assignment, participants were equipped with sweat collection devices as outlined in the following section, and a chest-worn Polar T7 heart rate (HR) monitor (Polar Electro Inc., Lake Success, NY, USA). The monitor was placed under the standard issue Airman Battle Uniform (ABU) worn by all participants.

Participants donned approximately 22kg (48lbs) of standard issue United States Air Force (USAF) tactical gear, including a combat helmet (1.5kg, 3lb), a weighted rucksack (15.9kg, 35lb), body armor (4.5kg, 10lb), and a decommissioned M4 rifle as shown in [S2 Fig](#). Once equipped, participants were instructed to march on a treadmill (Woodway, Waukesha, WI, USA) until exhaustion. Exhaustion was determined by each subject's own perception of an exhausted state. Throughout the march, HR was monitored continuously and subjective measurements of perceived exertion were obtained using the Borg Scale every three minutes [[46–48](#)]. Please refer to [S2 Table](#) for march results summary. It is important to note that participants had access to water throughout the experiment.

Sweat collection

Prior to donning the tactical gear, participants were instructed to wash their forearms with running tap water for 5–10 seconds per arm, without soap. The air-dried forearms were wiped with 70% isopropyl alcohol swabs until no visible residue was observed, and air-dried (BD, Franklin Lakes, NJ, USA). Participant's forearms were affixed with eight adhesive free Macroduct[®] Sweat Collection devices, able to retain approximately 80μL each, held in place with Velcro bands, four per arm. Compression sleeves were placed over the collection devices to keep the devices in place and induce sweat production. Refer to [S3 Fig](#) for representative images of collection device setup. Following collector placement, subjects donned tactical gear as outlined in the previous section.

After completion of the treadmill protocol, excreted sweat was collected from each of the eight collectors, via transfer pipette, and pooled in a single 5mL lo-bind Eppendorf tube on ice (Hamburg, Germany). The samples were immediately aliquotted, frozen on liquid nitrogen and lyophilized overnight ([S3 Fig](#)). Proteomics aliquots (n = 7) were supplemented with MS Safe protease inhibitor cocktail (Sigma-Aldrich, St. Louis, MO, USA). All proteomics and metabolomics (n = 10) samples were stored at -80°C until analysis.

In-solution proteomics sample preparation

Lyophilized proteomic aliquots were resuspended in 75μL water (Optima MS Grade, Thermo Fisher Scientific, Waltham, MA, USA). Protein concentration was estimated based on the Bradford method [[49](#)]. 60μg of protein from each sample was diluted in 50mM ammonium bicarbonate (Sigma-Aldrich). Dithiothreitol (DTT, 5.6mM at 95°C for 5 minutes) reduction and iodoacetamide (10mM at ambient temperature for 30 minutes in the dark) alkylation were performed (Sigma-Aldrich). 200ng of sequencing grade modified trypsin (Promega Corporation, Madison, WI, USA) was added and samples were incubated at 37°C overnight with gentle shaking. 1μL of formic acid was added to each sample and samples were vacuum centrifuged to dryness (Pierce, Thermo Fisher Scientific). Samples were resuspended in loading buffer (2% acetonitrile: 0.03% trifluoroacetic acid (TFA, aq) and peptide concentration was estimated using a Nanodrop spectrophotometer (Nanodrop, Wilmington, DE, USA). Samples were stored at -80°C until analysis.

In-gel proteomics sample preparation

After removal of 60 μ g of protein for in-solution digestion, the remainder of the proteomic samples were pooled. Two separate 14% SDS-PAGE gels were run using either 175 μ g of pooled sample, loading quantity based on a Nanodrop peptide estimation, or 2 μ g of pooled sample, loading quantity based on the Bradford analysis [49]. Proteins were fixed with 50% ethanol: 10% acetic acid for 1 hour. Gels were briefly washed with deionized water and stained overnight with BioSafe coomassie at 4°C (BioRad, Hercules, CA, USA). Stain was removed with frequent washes with MilliQ water and stored at 4°C until digestion.

Gel bands, 13 slices from the 175 μ g gel (Nanodrop) and 16 slices from the 2 μ g gel (Bradford), were excised and soaked in 50% methanol: 5% acetic acid (aq) for 1 hour twice. Please refer to [S4 Fig](#) for excised band locations. 200 μ L of acetonitrile was added for 5 minutes and gel pieces were dried in a vacuum centrifuge. Gel pieces were reduced with DTT (75 μ L of 32.4mM for 30 minutes at ambient temperature) and alkylated with iodoacetamide (75 μ L of 81.1mM for 30 minutes in the dark). Pieces were washed with 100mM ammonium bicarbonate and dehydrated with acetonitrile twice. Acetonitrile was removed in a vacuum centrifuge and gel was rehydrated for 10 minutes with 50 μ L of 20ng μ L⁻¹ of sequencing grade modified trypsin in 50mM ammonium bicarbonate. Excess trypsin solution was removed, 20 μ L of 50mM ammonium bicarbonate was added and samples were digested overnight at ambient temperature. Peptides were extracted by adding 30 μ L of 50% acetonitrile: 5% formic acid (aq) twice for 10 minutes each. Peptides were concentrated to approximately 25 μ L in a vacuum centrifuge. Samples were stored at -80°C until proteomic analysis.

Proteomics liquid chromatography mass spectrometry (LC-MS/MS)

2 μ g of in-solution samples or 6 μ L of in-gel samples were injected onto a 3 μ , 200Å ProntoSIL C18AQ trap column (nanoLCMS Solutions, Rancho Cordova, CA, USA) using a Dionex Ultimate 3000 RSLCnano operated in an online desalting configuration (Thermo Scientific). Peptide trapping and washing was performed isocratically using loading buffer at 5 μ L min⁻¹ for 5 minutes. Reverse phase nano separations were performed on an Easy-Spray PepMap 50 μ m x 150 μ m, 100Å, 2 μ m, column at 250nL min⁻¹ (Thermo Scientific). Mobile phase A consisted of 0.1% formic acid (aq) and mobile phase B consisted of 0.1% formic acid in acetonitrile (Optima MS Grade). The 180 minute analytical separation was as follows: 2% B for 5 minutes, a linear increase to 40% B at 163 minutes, 98% B wash from 165 to 168 minutes, and equilibration at 2% B from 170–180 minutes. Analytical eluent was introduced via Easy-Spray source (2.5kV) into an LTQ Orbitrap XL mass spectrometer operated in top 6 data dependent mode (Thermo Scientific). MS¹ scans were obtained in the Orbitrap at 30,000 resolution across 350–2000 m/z. MSⁿ scans were performed in the ion trap with fragmentation occurring at 35% normalized collision energy. Dynamic exclusion settings were as follows: repeat count 3, repeat duration 30, and exclusion duration 60. In-gel samples were run under the same LC and MS conditions except analytical separations were across a 45-minute linear 2% B to 40% B gradient (64 minute total separation).

Immunoblotting

SDS-PAGE gels were run as described in the In-gel proteomics sample preparation section. Gel proteins were transferred to nitrocellulose, Ponceau S stained, and blotted for sweat proteins. Chemiluminescent detection was performed using either the Pico or Femto substrate (Thermo Fisher) and a GE ImageQuant RT ECL imager (Pittsburgh, PA, USA). Please refer to [S3 Table](#) for antibody reagent information.

Metabolomic hydrophilic interaction liquid chromatography-mass spectrometry (HILIC-MS) analysis

Lyophilized sweat samples ($n = 11$) were reconstituted to aliquotted volume in 50% acetonitrile supplemented with 25nmol isotopically labeled Metabolomics Amino Acid Mix Standard (Cambridge Isotope Laboratories, Tewksbury, MA, USA). Samples were run in a randomized order (Excel, v. 14.7.7, Microsoft Corporation, Redmond, WA, USA).

Polar sweat compounds and amino acid calibration curves were separated on a Phenomenex Luna[®] HILIC column (3 μ m, 200 \AA , 100 x 3mm, Torrance, CA, USA) and a Dionex Ultimate 3000 RSLC-nano utilizing the micropump at 40°C (Thermo Fisher, Waltham, MA, USA). Mobile phase A consisted of 0.01M ammonium formate ($\geq 99.0\%$, Sigma-Aldrich, St. Louis, MO, USA) in 4.5% acetonitrile (aq) at pH 3.0 while mobile phase B consisted of 0.01M ammonium formate in 95% acetonitrile (aq) at pH 3.0. Injections (2 μ L) were subjected to the following gradient at 500 μ L min⁻¹: 0-3min hold at 97% B, 3-9min 65% B, 9-9.5min 50% B, hold at 50% B for one minute, 10.5-11.5min 97% B and hold for 10min at 97% B. Eluent was introduced into an LTQ Orbitrap XL setup for LC-MS affixed with a heated electrospray ionization source (Thermo Fisher). For positive mode, the source and Orbitrap XL were operated with the following parameters: source voltage 4.5kV, sheath gas 8, aux gas 1, capillary temperature 275°C, and scans were made from 60-550m/z at 7500 resolution. For negative mode, the source and Orbitrap XL were operated with the following parameters: source voltage 4.5kV, sheath gas 5, capillary temperature 280°C, and scans were made from 100-550m/z at 7500 resolution. The MS system was calibrated and tuned prior to each ionization mode run.

Data processing

Proteomics. Proteomic analysis was performed using the MassMatrix search engine (v. 2.4.2) as described previously [50,51]. Briefly, tandem data was searched against the Uniprot complete *H. sapiens* proteome supplemented with the cRAP contaminant database using an MS¹ mass tolerance of 10ppm, an MSⁿ tolerance of 0.8Da, and three allowed missed tryptic cleavages [52-55]. False discovery rate (FDR) was estimated using a reversed sequence database. Protein groups were required to have <5% FDR and 2 unique peptide matches to be retained in the analysis. The keratin and cRAP protein groups were removed from the analysis as contaminants but are provided in [S4 Table](#). Gene ontology information, protein class, molecular function, biological process, and cellular component for identified protein groups was tabulated using the Panther Classification System (v.13.1, [S4 Table](#)) [56-58].

Metabolomics. Positive and negative metabolomics raw data files were uploaded to the XCMS Online Software Suite as a single batch for retention time alignment and feature detection [59-66]. The feature XCMS settings were as follows: centWave detection with 10ppm mass tolerance and 5-30s peak width, 1m/z orbiwarp retention time correction, and alignment bandwidth of 5s. Feature lists and abundances (161 features positive mode, 133 features negative mode) were exported for further statistical analysis.

The XCMS feature list was manually searched for [M+H]⁺ or [M-H]⁻ ions against the Metlin Database at a 5ppm mass accuracy using the simple search feature [67,68]. Searches were limited to [M+H]⁺ or [M-H]⁻ ions based on previous sweat metabolomics results [35,39]. Neat standards were ordered for the resulting tentative compound identifications. Please refer to [S3 Table](#) for neat standard information. Confirmatory analysis for MS/MS was performed using the HILIC methods described above. Standards and stored sample aliquots were detected in MS/MS mode on an Orbitrap Fusion Lumos mass spectrometer (Thermo Fisher). The Fusion Lumos was operated under the following conditions. For positive mode, source voltage 3.8kV, sheath gas 5.45, aux gas 2, sweep gas 3, capillary temperature 300°C, and MS¹

scans were obtained at 60,000 resolution across a 60–300 m/z range. A mass list corresponding to neat standard m/z values was entered and fragments were generated for the mass list (± 10 ppm) using collision-induced dissociation (CID) at 10%, 20% and 40% normalized collision energy (10ms activation) within the ion trap (S5 Table). MS² detection of fragment ions was performed in the Orbitrap with 7,500 resolution and a 50–300 m/z scan range over 3 microscans. For negative mode, source voltage 3.4kV, sheath gas 15, sweep gas 1, capillary temperature 300°C, and MS¹ scans were obtained at 60,000 resolution across a 115–300 m/z range. A mass list corresponding to neat standard m/z values was entered and fragments were generated for the mass list and detected as described above (S5 Table).

All standard and sample MS/MS data were manually inspected and searched against the Metlin Database, as described previously, for mass accuracy and fragmentation patterns. Retention times of standards were tabulated using the XCalibur Qual browser software (v. 3.0.63, Thermo Fisher) and compared to the experimental results. Metabolomic gene ontology terms for primary process, biological role and industrial application were compiled from The Human Metabolome Database [69–72].

Statistical analysis

Basic statistical analysis was performed using the Prism GraphPad software (v. 5.0c, GraphPad Software Inc., La Jolla, CA, USA). Additional statistical analysis was performed using the R statistical software (v.3.4.4). Metabolite abundance values were quantile normalized to account for technical variation between samples run on LC-MS at different times. Hierarchical clustering was performed on the correlation matrix of the metabolite compounds using average linkage. The resulting dendrogram was used to reorder the correlation matrix, placing most similar metabolites near one another and more dissimilar farther apart. The reordered correlation matrix was visualized with a heatmap. Similarly, the subjects were clustered based on their metabolite profiles and reordered. Generalized linear model regression analysis with LASSO regularization was performed using the glmnet package within the R software [73].

Results and discussion

Proteomic analysis of sweat

Historically, the proteomic analysis of sweat has yielded a wide range of protein identifications, between 95 and 861 [29–34]. The stark difference in numbers of identifications among these studies are likely due to many methodological factors, such as collection methodology, sampling locations on the body, sweat stimulation procedures, sample handling and pooling. For biomarker discovery efforts a single sample from an individual must be able to be analyzed, i.e. without pooling, with minimal preparation steps to maintain large-scale throughput. Therefore, this approach was applied to a single forearm sweat sample collected from volunteers marching on a treadmill ($n = 7$). Data from in-solution tryptic digestion followed by a bottom-up shotgun proteomics illustrates a low number of protein groups identified (Fig 1A, 5% FDR threshold and 2 unique peptides). For a complete list of protein groups, including the keratin and cRAP protein groups, identified via in-solution digestion, please refer to S4 Table. The low number of groups identified from individual replicates suggests additional protein and/or peptide enrichment steps are necessary to improve the overall depth obtained from a single sample [29–34]. To further support the hypothesis that the low abundance of proteins in sweat contributes to the low numbers of proteomic identifications, an in-gel tryptic digestion of pooled samples, 175 μ g sample load based on Nanodrop and 2 μ g sample load based on Bradford assay, showed an increase in the protein groups identified (80 protein groups, Fig 1B, S4 Fig, and S4 Table). However, the increased number of identifications were only truly observed

| UniProt ID | Description | A. |
|------------|--|----|
| P81605 | Dermcidin | |
| P12273 | Prolactin-inducible protein | |
| P25311 | Zinc-alpha-2-glycoprotein | |
| P02768 | Serum albumin | |
| O95969 | Secretoglobin family 1D member 2 | |
| O75185 | Calcium-transporting ATPase type 2C member 2 | |
| Q96DR8 | Mucin-like protein 1 | |
| P01834 | Ig kappa chain C region | |
| P10909 | Clusterin | |
| Q02413 | Desmoglein-1 | |

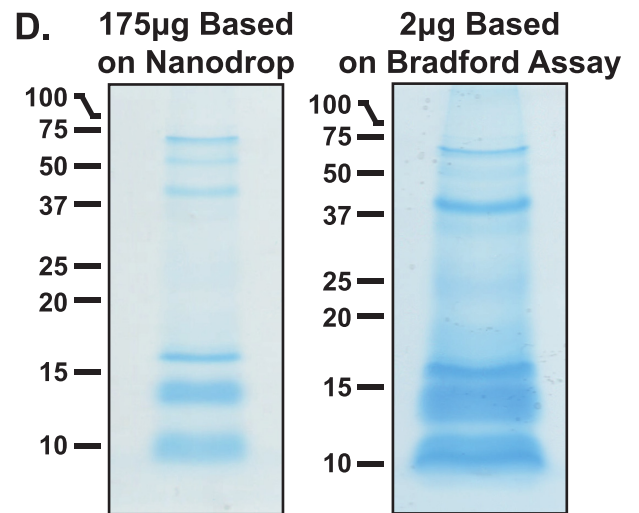
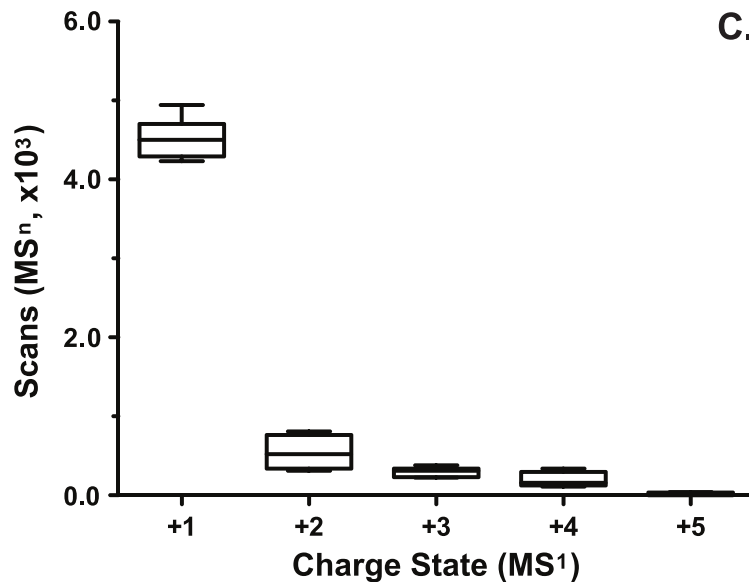
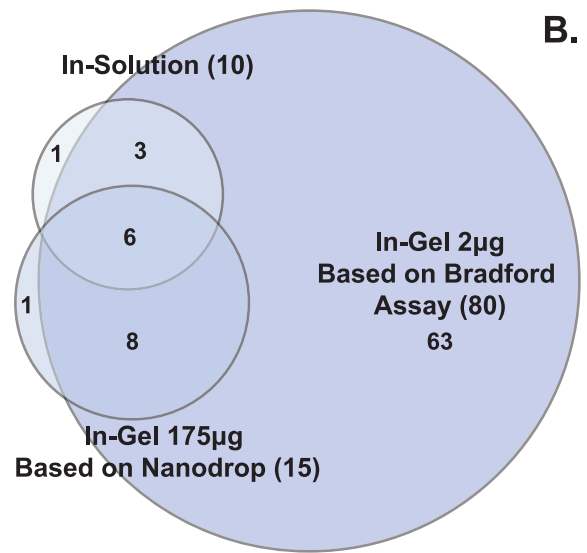


Fig 1. Proteomics results. A) A summary of the protein groups identified from sweat via in-solution digestion. B) A Venn diagram of the protein groups identified from in-solution and in-gel digestion. C) Box-whisker plot of the number of MS¹ charge states selected for MSⁿ scans. D) Images of coomassie stained gels from 175µg sample loaded based on Nanodrop and 2µg sample load based on Bradford Assay. Data shows a small number of protein groups are identified from single sweat samples resulting from a high number of +1 charged peptides and a large group of low molecular weight proteins/peptides.

<https://doi.org/10.1371/journal.pone.0203133.g001>

when gels were loaded based on Bradford Assay, showing an 87.5% (10/80) increase in IDs relative to in-solution digestion, rather than loaded by Nanodrop which shows a 33.3% (10/15) increase in IDs relative to in-solution digestion (Fig 1D). Select protein identifications were verified by immunoblot (S5 Fig). Further, inspection of the combined protein groups (82), identified from both the in-solution and the in-gel analyses, suggest 96% (79/82) of the data set was previously reported in the literature with 72% (59/82) of the protein groups found by three or more research groups (S4 Table). While only a few novel protein groups were identified (3), these results suggest the protein groups in our study highlight that more abundant proteins in sweat may be able to be utilized for biomarker discovery. Collectively, these results

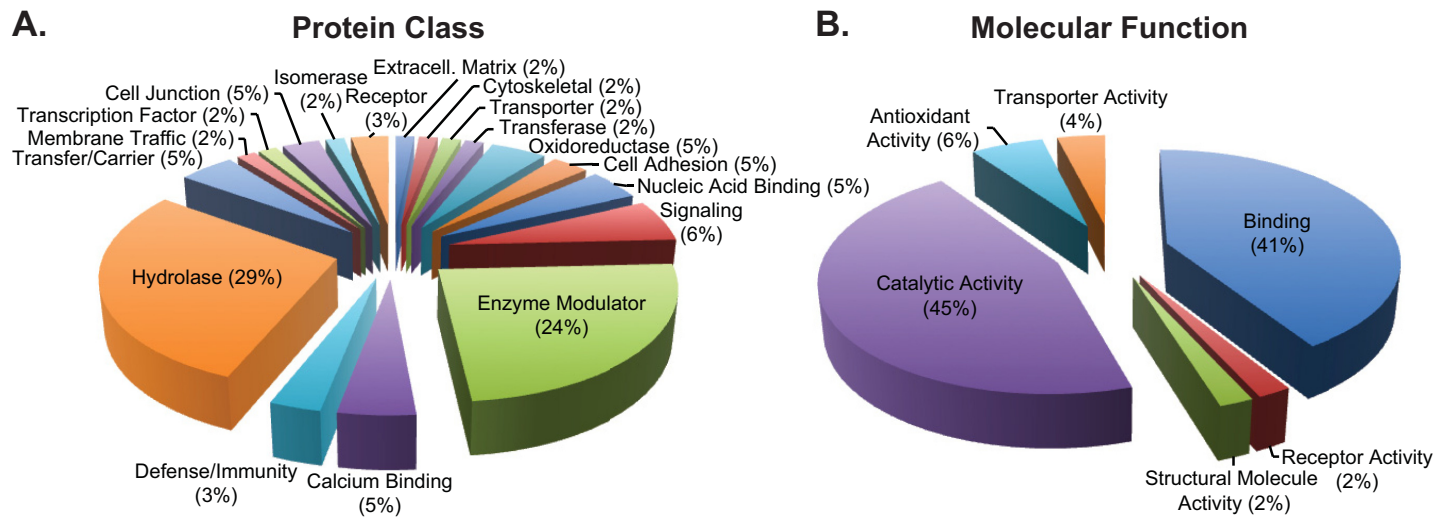


Fig 2. Proteomics gene ontology summary. Pie charts of the A) protein class and B) molecular function of protein groups identified from individual (in-solution) and pooled (in-gel) sweat samples. The data illustrate an enrichment of proteins associated with enzymatic activity in sweat.

<https://doi.org/10.1371/journal.pone.0203133.g002>

suggest single replicate sweat samples are too dilute to allow for biomarker discovery without additional sample preparation strategies to enrich low abundance proteins.

Several factors beyond low protein concentration may contribute to the small number of protein groups identified via the single replicate in-solution approach. First, inspection of the raw data suggests a large number of singly (+1) charged peptides were selected for MSⁿ fragmentation (Fig 1C). While singly charged peptides were not excluded in the method for fragmentation, the fragments of +1 peptide ions do not generate simultaneous b and y ions from the same molecule, which can lead to difficulty in confident spectral assignment within proteomic search engines. Next, SDS-PAGE gels of pooled, 175µg sweat peptides or 2µg sweat proteins, samples show a large group of low molecular weight (<17kD) proteins or peptides are present in excreted sweat (Fig 1D). Generally, tryptic digests of low molecular weight proteins and peptides provide few unique peptide ions for confident protein assignment. These results would support utilization of middle-down or top-down approaches to characterize this group of proteins [32]. Next, inspection of the protein class and molecular gene ontology data illustrates the majority (53%) of the proteins fall into the hydrolase and enzyme modulator classes and 45% have catalytic activity molecular function (Fig 2A and 2B). Taken together, the combination of singly charged peptides, i.e. non-specific cleavage, low molecular weight proteins/peptides within the samples, and the high abundance of enzymatic protein classes suggests proteolytic degradation maybe present. However, additional research is required to define whether the degradation is due to sample handling or innate host defense, e.g. anti-microbial peptides.

Metabolomic analysis of sweat

Similar to sweat proteomics, the metabolomic analysis of sweat has yielded a relatively small number of metabolite identifications when compared to other media sources [35–43]. Additionally, these metabolomic studies, as with the proteomic studies, utilize a diverse group of methods for collection, sweat stimulation, sample handling, and analysis [35–43]. Previous studies have illustrated a large group of polar metabolites, such as amino acids, are the predominant small molecules in this fluid [35–43]. Therefore, an untargeted metabolomics

approach, using hydrophilic interaction liquid chromatography (HILIC) separation in combination with high-resolution MS detection, was applied to determine the polar metabolomic content of single sweat samples for biomarker discovery. **Table 1** shows a list of the compounds tentatively identified from single sweat samples by both positive and negative ionization modes. To verify the tentative identity of the compounds, neat standards were obtained and run for comparison of retention time and MSⁿ fragmentation patterns (**Table 1, S3 and S6 Tables**). Twenty-nine of the 48 tentative identifications (60%) were verified by retention time and/or MS/MS fragmentation (**Table 1**). Of the 48 compounds tentatively identified, 81% (39/48) had been previously reported in the literature with 54% (26/48) having four or more literature references (**S6 Table**) [35–43]. These results establish that the metabolomics approach utilized is in line with historical metabolomic analysis suggesting these are the primary metabolite targets for biomarker discovery in this media.

While only 60% of the tentatively identified compounds were verified by retention time and/or MS/MS fragmentation, it is hypothesized that the tentative identifications that do not match the retention time with the neat standards may be a result of a matrix effect, such as salt content, of sweat compared to that of standards prepared in neat solutions. For example, all of the tentatively identified compounds that do not match the retention time of the neat standards do so with increased observed retention times. Increases of salt content in HILIC separations generally provide greater retention. However, it seems it may be analyte and salt dependent [74,75]. It is plausible that a matrix effect may contribute to the lack of retention time similarity among several of the tentatively identified compounds but further experimentation, such as preparing standards in representative sweat salt concentrations, will be required to confirm this hypothesis.

To identify the potential biological role and biological process associated with the metabolites identified, gene ontology terms were compiled from the Human Metabolome Database (**S6 Table**) [69,71,72]. Pie charts of the GO terms illustrate the largest biological role grouping is the essential and semi-essential amino acids (28%) and the predominant biological process represented is amino acid metabolism or degradation (26%, **Fig 3A and 3B**). These results support previous evidence suggesting amino acids are the most abundant metabolites in sweat [35–43]. To determine how metabolite abundances vary together, a hierarchical cluster analysis was performed. **Fig 3C** show strong correlations exist among metabolite expression profiles (**Fig 3C**). For example, a large group of metabolites tend to be increased together (**Fig 3C** lower right corner) while several others tend to decrease similarly (**Fig 3C** lower left corner). These results would illustrate a relationship among metabolite abundances in sweat.

This investigation represents the first study simultaneously investigating both proteomics and metabolomics from the same sweat samples. Collective examination of both data sets suggests the major protein groups identified have hydrolase and catalytic activity while amino acids remain the most abundant metabolites in sweat (**Fig 2A and 2B**). Assuming hydrolase and catalytic degradation of proteins in sweat produces free amino acids lends further support for protein degradation leading to increases in free amino acids in sweat [42]. This hypothesis is further strengthened by the strong relationship in expression of the metabolites, including amino acids, in sweat (**Fig 3C**). If protein degradation were the source of amino acids in sweat, it would be expected that these metabolites would trend with exercise duration i.e. longer time for enzymes to react with proteins to make free amino acids. **Fig 4** illustrates clustering of metabolites and march parameters by participant. This limited data set shows examples of both long duration and decreased amino acids (participants 15 and 17) and long duration and increased amino acids (participants 23 and 20). Additionally, no statistically significant result was found between the metabolite abundances and physiological or march parameters. A Poisson regression was run on rate of perceived fatigue increase against the metabolites as well as

Table 1. A summary of the metabolites identified from sweat.

| Compound | CAS, Metlin ID, HMDB | Median m/z | Median RT (min) | Precursor Δ Mass (ppm) | Adduct | Fragments |
|-------------------------|---|------------|-----------------|------------------------|--------------------|--------------------|
| Urocanic Acid | 104-98-3, 298, HMDB0000301 | 139.0499 | 1.11 | 2 | [M+H] ⁺ | 121.0398, 95.0605 |
| | | 137.0363 | 1.13 | 4 | [M-H] ⁻ | 93.0457 |
| Creatinine | 60-27-5, 8, HMDB0000562 | 114.0659 | 1.14 | 2 | [M+H] ⁺ | 86.0961 |
| Choline | 62-49-7, 56, HMDB0000097 | 104.1067 | 1.30 | 3 | [M+H] ⁺ | 60.0808, 58.0647 |
| Trolamine | 102-71-6, 43365, HMDB0032538 | 150.1121 | 1.42 | 2 | [M+H] ⁺ | 132.1019, 114.0917 |
| Dimethylethanolamine | 108-01-0, 88280, HMDB0032231 | 90.0911 | 1.48 | 3 | [M+H] ⁺ | 72.0810 |
| L-Ascorbic Acid | 50-81-7, 249, HMDB0000044 | 175.0253 | 1.74 | 2 | [M-H] ⁻ | - |
| Diolamine | 111-42-2, 3239, HMDB0004437 | 106.0859 | 2.20 | 2 | [M+H] ⁺ | 88.0758, 70.0648 |
| Taurine | 107-35-7, 31, HMDB0000251 | 126.0216 | 2.28 | 2 | [M+H] ⁺ | - |
| | | 124.0079 | 2.27 | 4 | [M-H] ⁻ | 79.9567 |
| N-Acetyl-DL-Serine | 94-14-3, 96376, HMDB0002931 | 146.0464 | 2.42 | 3 | [M-H] ⁻ | 74.0245 |
| Uric Acid | 69-93-2, 88, HMDB0000289 | 167.0215 | 2.60 | 2 | [M-H] ⁻ | 124.0149, 96.0201 |
| L-Prolinamide | 7531-52-4, 73355 | 115.0862 | 2.61 | 3 | [M+H] ⁺ | 70.0653 |
| L-Phenylalanine | 63-91-2, 28, HMDB0000159 | 166.0860 | 2.87 | 1 | [M+H] ⁺ | 120.0808 |
| L-Leucine, L-Isoleucine | 61-90-5, 24, HMDB0000687 73-32-5, 23, HMDB0000172 | 132.1016 | 2.90 | 2 | [M+H] ⁺ | 86.0966, 69.0692 |
| Pyroglutamic Acid | 98-79-3, 3251, HMDB0000267 | 128.0359 | 2.97 | 4 | [M-H] ⁻ | 82.0294 |
| Piperidine | 110-89-4, 64457, HMDB0034301 | 86.0962 | 2.99 | 2 | [M+H] ⁺ | - |
| L-Methionine | 63-68-3, 26, HMDB0000696 | 150.0581 | 3.38 | 1 | [M+H] ⁺ | 133.0308, 104.0518 |
| 3-Indoleacrylic acid | 1204-06-4, 5702, HMDB0000734 | 188.0703 | 3.60 | 1 | [M+H] ⁺ | - |
| L-Tryptophan | 73-22-3, 33, HMDB0000929 | 205.0969 | 3.60 | 1 | [M+H] ⁺ | 188.0705 |
| Pyrrolidine | 123-75-1, 87832, HMDB0031641 | 72.0805 | 3.65 | 3 | [M+H] ⁺ | - |
| L-Valine | 72-18-4, 35, HMDB0000883 | 118.0860 | 3.65 | 2 | [M+H] ⁺ | 72.0809, 55.0539 |
| L-Proline | 147-85-3, 29, HMDB0000162 | 116.0703 | 3.70 | 2 | [M+H] ⁺ | 70.0653 |
| L-Tyrosine | 60-18-4, 34, HMDB0000158 | 182.0808 | 4.21 | 1 | [M+H] ⁺ | 165.0547, 136.0757 |
| 5-Aminopentanoic acid | 660-88-8, 6902, HMDB0003355 | 118.0859 | 4.57 | 2 | [M+H] ⁺ | 101.0831 |
| L-Carnitine | 541-15-1, 52, HMDB0000062 | 162.1121 | 5.41 | 2 | [M+H] ⁺ | - |
| L-Alanine | 56-41-7, 11, HMDB0000161 | 90.0547 | 5.45 | 2 | [M+H] ⁺ | - |
| Creatine | 57-00-1, 7, HMDB0000064 | 132.0764 | 5.75 | 2 | [M+H] ⁺ | 90.0551 |

(Continued)

Table 1. (Continued)

| Compound | CAS, Metlin ID, HMDB | Median m/z | Median RT (min) | Precursor Δ Mass (ppm) | Adduct | Fragments |
|------------------|------------------------------|------------|-----------------|------------------------|--------------------|--------------------|
| L-Serine | 56-45-1, 30, HMDB0000187 | 106.0495 | 5.77 | 3 | [M+H] ⁺ | 88.0395, 60.0445 |
| | | 104.0358 | 5.83 | 4 | [M-H] ⁻ | - |
| L-Asparagine | 70-47-3, 14, HMDB0000168 | 133.0605 | 5.77 | 2 | [M+H] ⁺ | - |
| | | 131.0468 | 5.83 | 4 | [M-H] ⁻ | 113.0366 |
| L-Glutamine | 56-85-9, 18, HMDB0000641 | 147.0767 | 5.81 | 1 | [M+H] ⁺ | - |
| Glycine | 56-40-6, 20, HMDB0000123 | 76.0391 | 5.92 | 2 | [M+H] ⁺ | - |
| 5-Hydroxyectoine | 165542-15-4, 63420 | 159.0761 | 6.31 | 2 | [M+H] ⁺ | 141.0649, 113.0712 |
| Citrulline | 372-75-8, 16, HMDB0000904 | 176.1027 | 6.31 | 1 | [M+H] ⁺ | 159.0765, 113.0709 |
| | | 174.0890 | 6.34 | 3 | [M-H] ⁻ | 131.0825 |
| L-Glutamate | 58-86-0, 19, HMDB0000148 | 148.0601 | 6.45 | 2 | [M+H] ⁺ | 130.0502, 84.0437 |
| L-Histidine | 71-00-1, 21, HMDB0000177 | 156.0765 | 6.52 | 1 | [M+H] ⁺ | 110.0715, 83.0604 |
| | | 154.0627 | 6.55 | 3 | [M-H] ⁻ | 137.0352, 93.0452 |
| L-Aspartic Acid | 56-84-8, 15, HMDB0000191 | 132.0307 | 6.62 | 3 | [M-H] ⁻ | 115.0035, 88.0402 |
| L-Arginine | 74-79-3, 13, HMDB0000517 | 175.1186 | 7.22 | 2 | [M+H] ⁺ | 70.0654, 60.0558 |
| | | 173.1048 | 7.22 | 2 | [M-H] ⁻ | 131.0824 |
| L-Lysine | 56-87-1, 25, HMDB0000182 | 147.1125 | 7.36 | 2 | [M+H] ⁺ | - |
| L-Pipecolic acid | 3105-95-1, 6310, HMDB0000716 | 130.0859 | 7.36 | 2 | [M+H] ⁺ | - |
| Ornithine | 70-26-8, 27, HMDB0000214 | 133.0968 | 7.42 | 2 | [M+H] ⁺ | - |
| | | 131.0831 | 6.34 | 3 | [M-H] ⁻ | 113.0366, 85.0658 |
| L-Prolinamide | 7531-52-4, 73355 | 115.0862 | 7.43 | 3 | [M+H] ⁺ | - |

<https://doi.org/10.1371/journal.pone.0203133.t001>

linear regression of VO₂ max against the metabolites, using LASSO variable selection (alpha = 0.8, lambda = 1 standard error via cross validation), in both cases, no metabolites were selected. While direct correlation of metabolites with physiological or performance parameters could not be accomplished, the data illustrate groupings of participant data begin to form. However, a greater number of biological replicates monitored longitudinally and more controlled experiments, accounting for potential confounding factors, will be required to truly identify metabolomic biomarkers of physiology and performance from sweat metabolomics.

As stated before, the data suggest a confounding factor or factors may exist in the metabolomics data. First, one analytical result not presented in this study is localized sweat rate. While this feature has previously been correlated with analyte concentrations, accurately estimating localized sweat rate is extremely difficult [17,23,25,76,77]. Gravimetric sweat rates, via filter paper or syringe mass changes are the most frequently published method for localized sweat rate estimation [6,7,10,15,21,22,27,78,79]. However, this method fails to take into account the latent time to initiate sweat production, which may be different depending on the individual,

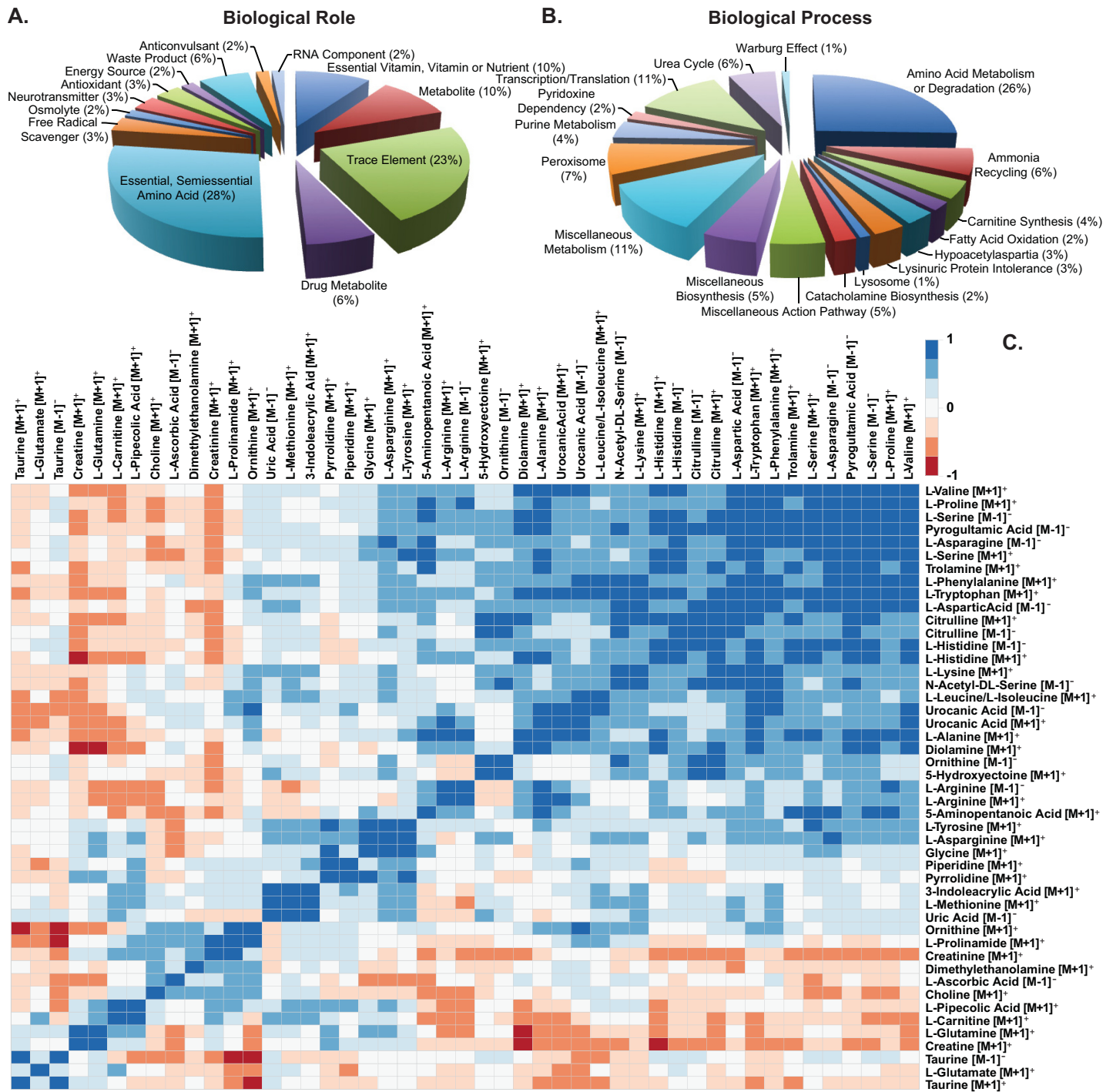


Fig 3. Metabolomics gene ontology and clustering of abundances. Pie charts of the A) biological role and B) biological process for metabolites identified from sweat samples. C) Clustering of metabolite abundances. Data illustrate amino acids are the primary polar metabolites present in sweat with their expression correlated among each other.

<https://doi.org/10.1371/journal.pone.0203133.g003>

leading to inaccurate estimates of collection times [6,7,10,15,21,22,27,78]. Additionally, these methods ignore the excess sweat volume from saturated collection devices or incomplete recovery of sweat from within a collection pouch, yielding additional total volume.

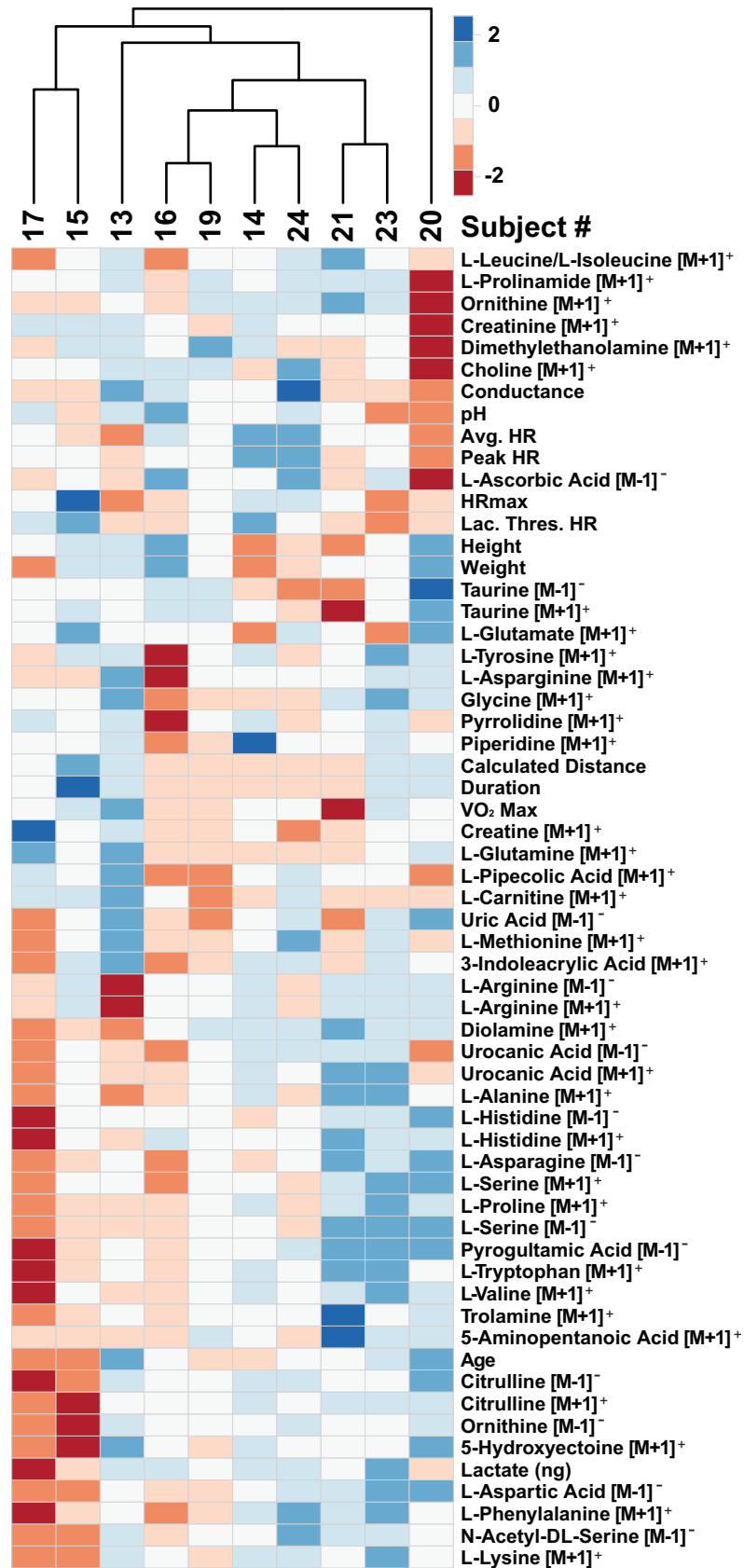


Fig 4. Clustering of metabolite abundances and performance measures by participant. Data illustrate participants cluster by metabolite abundance.

<https://doi.org/10.1371/journal.pone.0203133.g004>

Furthermore, though several researchers have reported sweat rate, few have utilized such data for normalization of analyte concentration values [9,11,25]. Finally, others have suggested correlations between specific analytes and localized sweat rate [5,22,25]. For example, Falk et al. have observed positive correlations between lactate excretion rate in sweat and localized sweat rate in children [25]. The correlations between specific analytes and localized sweat rate must be validated, on a large scale, to be used as a normalization factor to account for sweat rate. Since the authors were uncomfortable with the accuracy of the current standard localized sweat rate determinations, sweat rate was not accounted for in this study. However, quantile normalization was applied to the metabolomics data set to attempt to remove this technical variation in abundance.

Next, the collection methodology used in this study may have contributed to some variability observed in the data set. For example, Delgado-Povedano et al demonstrated differences in sweat analytes based on collection methodology [36]. The Macroduct collection apparatus used in our study holds approximately 80 μ L of sweat through capture in an open-ended tube on the top of the device (S3 Fig). The collector's 80 μ L capacity was generally below the amount of sweat each participant yielded, suggesting an overflow of sweat lost through the open end of the collector. Therefore, the samples represent only the final portion of the exercise rather than a representation of the entire exercise. This factor may also have played a part in the confounding results for duration and metabolite abundance (Fig 4). As a result, investigators utilizing the Macroduct for sweat collection should be cognizant of overfilling and consider collecting the sweat prior to sample loss.

Finally, while the arms of participants were cleaned with water and isopropyl alcohol wipes, many compounds have links to industrial applications (S6 Table). For example, 54% (19/35) of the metabolites have been linked to personal care products (S6 Table). Furthermore, 60% (21/35) of the metabolites belong to the Food and Nutrition category (S6 Table). These results suggest further definition and experimentation surrounding the contribution of skin cosmetics/cleanliness and microbiological burden, such as comparing skin swabs prior to the experiment to the collected sweat samples, is required for further biomarker discovery from this media source.

Conclusions

While the overall proteomic and metabolomic discovery from sweat yielded only a handful of novel identifications, this study has identified several difficulties surrounding using sweat as a medium for biomarker discovery. For example, enrichment methodologies must be optimized to concentrate low abundance protein analytes from single sweat samples. Definition of sample degradation and contamination must be outlined for proper metabolomics analysis from this medium. The data presented in this study suggest a potential for biomarker discovery from sweat. However, more controlled experiments are required to define the methodological aspects that influence the analytical results.

Supporting information

S1 Table. Participant metadata. A summary of each participant's (n = 11) metadata. (TIF)

S2 Table. Performance results. A summary of the performance results from the march. L (Low), M (Moderate), H (High) intensity. All time is in 24-hour format. (TIF)

S3 Table. Reagents. A summary of the immunoreagents and the small molecule reagents. (XLSX)

S4 Table. Proteomics summary. A summary of the protein groups identified from the proteomic analysis of sweat including Panther gene ontology terms. (XLSX)

S5 Table. Metabolomics precursor ions. A) The m/z values used for MS/MS scan triggering in positive mode and B) in negative mode. (TIF)

S6 Table. Metabolomics summary. A summary of the metabolites identified from the untargeted metabolomic analysis of sweat including Human Metabolome Database gene ontology terms. (XLSX)

S1 Fig. Room temperature and humidity. Overlay: A plot of the mean room temperature (black circles) for each test individual (n = 10) with the overall mean (long horizontal bar, 22.20°C) and the 95% confidence interval (shorter horizontal bars, upper 22.35°C and lower 22.05°C). Underlay: A representative example of the room temperature for two individuals, one in the morning (AM) and one in the afternoon (PM), for the duration of their march. Humidity was consistent at 0.2% for all test individuals. (TIF)

S2 Fig. Questionnaire and pretesting data with experimental setup. A) A summary of the questionnaire and pretesting results. B) A summary of the test conditions and subject random assignment. C) A representative image of the march experimental setup. (TIF)

S3 Fig. Sweat collector placement and sample aliquots. A) A representative photo of the placement of the Macroduct[®] sweat collectors B) A representative photo of the sweat collectors covered with compression sleeves. C) A summary of the volumes and aliquots from the sweat collection. Met (metabolomics), Prot (proteomics). (TIF)

S4 Fig. In-Gel results. Representations of in-gel band locations from A) 175µg sample gel based on Nanodrop (13 slices) and B) 2µg gel based on Bradford Assay (16 slices). (TIF)

S5 Fig. Verification immunoblots. Immunoblots confirming the selected proteins identified in the proteomics data set from A) individual sample replicates and B) 2µg pooled sample. (TIF)

Acknowledgments

United States Air Force provided support for this work via subcontract to UES Inc. (FA8650-14-D-6516). Opinions, interpretations, conclusions and recommendations are those of the authors and not necessarily endorsed by the United States Government. The authors would like to thank Dr. Heather Pangburn, Mr. Gregory Sudberry and Ms. Tenika Dearmond for their scholarly help for this manuscript.

Author Contributions

Conceptualization: Sean W. Harshman, Rhonda L. Pitsch, Anthony V. Qualley, Adam J. Strang.

Data curation: Sean W. Harshman, Maegan L. O'Connor, Nicole M. Schaeublin, Molly V. Fischer, Jason J. Eckerle.

Formal analysis: Sean W. Harshman, Zachary K. Smith, Brian A. Geier.

Funding acquisition: Jennifer A. Martin.

Investigation: Sean W. Harshman, Rhonda L. Pitsch, Maegan L. O'Connor, Anthony V. Qualley, Nicole M. Schaeublin, Molly V. Fischer, Jason J. Eckerle.

Methodology: Sean W. Harshman, Rhonda L. Pitsch, Anthony V. Qualley, Nicole M. Schaeublin.

Resources: Jason J. Eckerle, Adam J. Strang.

Supervision: Sean W. Harshman, Adam J. Strang, Jennifer A. Martin.

Visualization: Sean W. Harshman, Zachary K. Smith.

Writing – original draft: Sean W. Harshman.

Writing – review & editing: Sean W. Harshman, Rhonda L. Pitsch, Zachary K. Smith, Maegan L. O'Connor, Anthony V. Qualley, Molly V. Fischer, Jason J. Eckerle, Adam J. Strang, Jennifer A. Martin.

References

1. Evans G, Maughn RJ, Shirreffs SM. Humana Press, Cham; 2017. pp. 281–294. https://doi.org/10.1007/978-3-319-43027-0_15
2. Jadoon S, Karim S, Akram MR, Kalsoom Khan A, Zia MA, Siddiqi AR, et al. Recent Developments in Sweat Analysis and Its Applications. *Int J Anal Chem.* 2015; 2015: 1–7. <https://doi.org/10.1155/2015/164974> PMID: 25838824
3. Mena-Bravo A, Luque de Castro MD. Sweat: A sample with limited present applications and promising future in metabolomics. *J Pharm Biomed Anal.* 2014; 90: 139–147. <https://doi.org/10.1016/j.jpba.2013.10.048> PMID: 24378610
4. Agrawal K, Hassoun LA, Foolad N, Pedersen TL, Sivamani RK, Newman JW. Sweat lipid mediator profiling: a non-invasive approach for cutaneous research. *J Lipid Res.* 2017; 58: 188–195. <https://doi.org/10.1194/jlr.M071738> PMID: 27875258
5. Patterson MJ, Galloway SD, Nimmo MA. Variations in regional sweat composition in normal human males. *Exp Physiol.* 2000; 85: 869–875. PMID: 11187982
6. Morgan RM, Patterson MJ, Nimmo MA. Acute effects of dehydration on sweat composition in men during prolonged exercise in the heat. *Acta Physiol Scand.* Blackwell Science Ltd; 2004; 182: 37–43. <https://doi.org/10.1111/j.1365-201X.2004.01305.x> PMID: 15329055
7. Hayden G, Milne HC, Patterson MJ, Nimmo MA. The reproducibility of closed-pouch sweat collection and thermoregulatory responses to exercise-heat stress. *Eur J Appl Physiol.* 2004; 91: 748–751. <https://doi.org/10.1007/s00421-004-1057-x> PMID: 14985998
8. Pilardeau P, Vaysse J, Garnier M, Joubin M, Valeri L. Secretion of Eccrine Sweat Glands During Exercise. *Brit J Sports Med.* 1979; 13: 118–121.
9. Alvear-Ordenes I, García-López D, De Paz JA, González-Gallego J. Sweat lactate, ammonia, and urea in rugby players. *Int J Sports Med.* 2005; 26: 632–637. <https://doi.org/10.1055/s-2004-830380> PMID: 16158367
10. Saat M, Sirisinghe RG, Singh R, Tochihara Y. Effects of short-term exercise in the heat on thermoregulation, blood parameters, sweat secretion and sweat composition of tropic-dwelling subjects. *J Physiol Anthropol Appl Human Sci.* 2005; 24: 541–549. PMID: 16237263

11. Meyer F, Laitano O, Bar-Or O, McDougall D, Heigenhauser GJF, Heigenhauser GJF. Effect of age and gender on sweat lactate and ammonia concentrations during exercise in the heat. *Braz J Med Biol Res.* 2007; 40: 135–143. PMID: [17225006](#)
12. Sakharov DA, Shkurnikov MU, Vagin MY, Yashina EI, Karyakin AA, Tonevitsky AG. Relationship between lactate concentrations in active muscle sweat and whole blood. *Bull Exp Biol Med.* 2010; 150: 83–85. PMID: [21161059](#)
13. Fukumoto T, Tanaka T, Fujioka H, Yoshihara S, Ochi T, Kuroiwa A. Differences in Composition of Sweat Induced by Thermal Exposure and by Running Exercise. *Clin Cardiol.* 1988; 11: 707–709. PMID: [3224454](#)
14. Herrmann F, Mandol L. Studies of pH of sweat produced by different forms of stimulation. *J Invest Dermatol.* 1955; 24: 225–246. PMID: [14354284](#)
15. Fellmann N, Grizard G, Coudert J. Human frontal sweat rate and lactate concentration during heat exposure and exercise. *J Appl Physiol Respir Environ Exerc Physiol.* 1983; 54: 355–360. <https://doi.org/10.1152/jappl.1983.54.2.355> PMID: [6833032](#)
16. Shirreffs SM, Maughan RJ. Whole body sweat collection in humans: an improved method with preliminary data on electrolyte content. *J Appl Physiol.* 1997; 82: 336–341. <https://doi.org/10.1152/jappl.1997.82.1.336> PMID: [9029235](#)
17. Sato K, Dobson RL. Regional and individual variations in the function of the human eccrine sweat gland. *J Invest Dermatol.* 1970; 54: 443–449. PMID: [5446389](#)
18. Brusilow SW, Gordes EH. Ammonia secretion in sweat. *Am J Physiol.* 1968; 214: 513–517. <https://doi.org/10.1152/ajplegacy.1968.214.3.513> PMID: [5638982](#)
19. Luetkemeier MJ, Hanisko JM, Aho KM. Skin Tattoos Alter Sweat Rate and Na⁺ Concentration. *Med Sci Sports Exerc. Medicine & Science in Sports & Exercise;* 2017; 49: 1432–1436. <https://doi.org/10.1249/MSS.0000000000001244> PMID: [28240705](#)
20. Boysen TC, Yanagawa S, Sato F, Sato K. A modified anaerobic method of sweat collection. *J Appl Physiol Respir Environ Exerc Physiol.* 1984; 56: 1302–1307. <https://doi.org/10.1152/jappl.1984.56.5.1302> PMID: [6327585](#)
21. Lemon PW, Yarasheski KE, Dolny DG. Validity/reliability of sweat analysis by whole-body washdown vs. regional collections. *J Appl Physiol.* 1986; 61: 1967–1971. <https://doi.org/10.1152/jappl.1986.61.5.1967> PMID: [3782002](#)
22. Baker LB, Stofan JR, Hamilton AA, Horswill CA. Comparison of regional patch collection vs. whole body washdown for measuring sweat sodium and potassium loss during exercise. *J Appl Physiol.* 2009; 107: 887–895. <https://doi.org/10.1152/jappphysiol.00197.2009> PMID: [19541738](#)
23. Allan JR, Wilson CG. Influence of acclimatization on sweat sodium concentration. *J Appl Physiol.* 1971; 30: 708–712. <https://doi.org/10.1152/jappl.1971.30.5.708> PMID: [5572793](#)
24. Górski J, Lerczak K, Wojcieszak I. Urea excretion in sweat during short-term efforts of high intensity. *Eur J Appl Physiol Occup Physiol.* 1985; 54: 416–419. PMID: [4065129](#)
25. Falk B, Bar-Or O, MacDougall JD, McGillis L, Calvert R, Meyer F. Sweat lactate in exercising children and adolescents of varying physical maturity. *J Appl Physiol.* 1991; 71: 1735–1740. <https://doi.org/10.1152/jappl.1991.71.5.1735> PMID: [1761468](#)
26. Morimoto T, Johnson RE. Ammonia and the Regulation of Acidity in Human Eccrine Sweat. *Nature.* 1967; 216: 813–814. <https://doi.org/10.1038/216813a0> PMID: [6074955](#)
27. Patterson MJ, Galloway SDR, Nimmo MA. Effect of induced metabolic alkalosis on sweat composition in men. *Acta Physiol Scand.* Blackwell Science Ltd; 2002; 174: 41–46. <https://doi.org/10.1046/j.1365-201x.2002.00927.x> PMID: [11851595](#)
28. Kutysenko VP, Molchanov M, Beskaravayny P, Uversky VN, Timchenko MA. Analyzing and Mapping Sweat Metabolomics by High-Resolution NMR Spectroscopy. Permyakov EA, editor. *PLoS ONE.* 2011; 6: e28824–9. <https://doi.org/10.1371/journal.pone.0028824> PMID: [22194922](#)
29. Raiszadeh MM, Ross MM, Russo PS, Schaepper MA, Zhou W, Deng J, et al. Proteomic Analysis of Eccrine Sweat: Implications for the Discovery of Schizophrenia Biomarker Proteins. *J Proteome Res.* 2012; 11: 2127–2139. <https://doi.org/10.1021/pr2007957> PMID: [22256890](#)
30. Burian M, Velic A, Matic K, Cunther S, Kraft B, Gonser L, et al. Quantitative Proteomics of the Human Skin Secretome Reveal a Reduction in Immune Defense Mediators in Ectodermal Dysplasia Patients. *J Invest Dermatol.* 2015; 135: 759–767. <https://doi.org/10.1038/jid.2014.462> PMID: [25347115](#)
31. Park J-H, Park G-T, Cho IH, Sim S-M, Yang J-M, Lee D-Y. An antimicrobial protein, lactoferrin exists in the sweat: proteomic analysis of sweat. *Exp Dermatol.* 2011; 20: 367–376. <https://doi.org/10.1111/j.1600-0625.2010.01207.x> PMID: [21366699](#)
32. Yu Y, Prassas I, Muyltjens CMJ, Diamandis EP. Proteomic and peptidomic analysis of human sweat with emphasis on proteolysis. *J Proteomics.* Elsevier B.V; 2017; 155: 40–48. <https://doi.org/10.1016/j.jprot.2017.01.005> PMID: [28095327](#)

33. Csoos E, Emri G, Kallo G, Tsapraillis G, Tozser J. Highly abundant defense proteins in human sweat as revealed by targeted proteomics and label-free quantification mass spectrometry. *J Eur Acad Dermatol Venereol.* 2015; 10: 2024–2031.
34. Adewole OO, Erhabor GE, Adewole TO, Ojo AO, Oshokoya H, Wolfe LM, et al. Proteomic profiling of eccrine sweat reveals its potential as a diagnostic biofluid for active tuberculosis. *Proteomics Clin Appl.* 2016; 10: 547–553. <https://doi.org/10.1002/prca.201500071> PMID: 26948146
35. Calderon-Santiago M, Priego-Capote F, Jurado-Gamez B, de Castro MDL. Optimization study for metabolomics analysis of human sweat by liquid chromatography–tandem mass spectrometry in high resolution mode. *J Chromatogr A. Elsevier B.V.*; 2014; 1333: 70–78. <https://doi.org/10.1016/j.chroma.2014.01.071> PMID: 24529403
36. Delgado-Povedano MM, Calderon-Santiago M, de Castro MDL, Priego-Capote F. Metabolomics analysis of human sweat collected after moderate exercise. *Talanta. Elsevier B.V.*; 2018; 177: 47–65. <https://doi.org/10.1016/j.talanta.2017.09.028> PMID: 29108583
37. Dutkiewicz EP, Lin J-D, Tseng T-W, Wang Y-S, Urban PL. Hydrogel micropatches for sampling and profiling skin metabolites. *Anal Chem.* 2014; 86: 2337–2344. <https://doi.org/10.1021/ac4039338> PMID: 24517117
38. del Mar Delgado-Povedano M, Calderón-Santiago M, Priego-Capote F, Jurado-Gómez B, de Castro MDL. Recent advances in human sweat metabolomics for lung cancer screening. *Metabolomics.* Springer US; 2016; 12: 1–12. <https://doi.org/10.1007/s11306-016-1116-4>
39. Calderón-Santiago M, Priego-Capote F, Turck N, Robin X, Jurado-Gómez B, Sanchez JC, et al. Human sweat metabolomics for lung cancer screening. *Anal Bioanal Chem.* 2015; 407: 5381–5392. <https://doi.org/10.1007/s00216-015-8700-8> PMID: 25935675
40. Hooton K, Han W, Li L. Comprehensive and Quantitative Profiling of the Human Sweat Submetabolome Using High-Performance Chemical Isotope Labeling LC–MS. *Anal Chem.* 2016; 88: 7378–7386. <https://doi.org/10.1021/acs.analchem.6b01930> PMID: 27351466
41. Macedo AN, Mathiaparanam S, Brick L, Keenan K, Gonska T, Pedder L, et al. The Sweat Metabolome of Screen-Positive Cystic Fibrosis Infants: Revealing Mechanisms beyond Impaired Chloride Transport. *ACS Cent Sci.* 2017; 3: 904–913. <https://doi.org/10.1021/acscentsci.7b00299> PMID: 28852705
42. Mark H, Harding CR. Amino acid composition, including key derivatives of eccrine sweat: potential biomarkers of certain atopic skin conditions. *Int J Cosmet Sci.* 2012; 35: 163–168. <https://doi.org/10.1111/ics.12019> PMID: 23075272
43. Liappis N, Kelderbacher SD, Kessler K, Bantzer P. Quantitative study of free amino acids in human eccrine sweat excreted from the forearms of healthy trained and untrained men during exercise. *Eur J Appl Physiol Occup Physiol.* 1979; 42: 227–234. PMID: 535594
44. Bruce RA, Lovejoy FW Jr, Pearson R, Yu PNG, Brothers GB, Velasquez T. Normal respiratory and circulatory pathways of adaptation in exercise. *J Clin Invest.* 1949; 28: 1423–1430. <https://doi.org/10.1172/JCI102207> PMID: 15407661
45. Bruce RA, Pearson R, Lovejoy FW Jr, Yu PNG, Brothers GB. Variability of respiratory and circulatory performance during standardized exercise. *J Clin Invest.* 1949; 28: 1431–1438. <https://doi.org/10.1172/JCI102208> PMID: 15395945
46. Borg G. Borg's Perceived Exertion and Pain Scales. 1st ed. *Human Kinetics*; 1998.
47. Borg GA. Psychophysical bases of perceived exertion. *Med Sci Sports Exerc.* 1982; 14: 337–381.
48. Pires FO, Lima Silva AE, Bertuzzi R, Casarini DH, Kiss MAPDM, Lambert MI, et al. The influence of peripheral afferent signals on the rating of perceived exertion and time to exhaustion during exercise at different intensities. *Psychophysiology. Blackwell Publishing Inc*; 2011; 48: 1284–1290. <https://doi.org/10.1111/j.1469-8986.2011.01187.x> PMID: 21375538
49. Bradford MM. A rapid and sensitive method for the quantitation of microgram quantities of protein utilizing the principle of protein-dye binding. *Anal Biochem.* 1976; 72: 248–254. PMID: 942051
50. Harshman SW, Canella A, Ciarlariello PD, Rocci A, Agarwal K, Smith EM, et al. Characterization of Multiple Myeloma Vesicles by Label-Free Relative Quantitation. *Proteomics.* 2013; 13: 3013–3029. <https://doi.org/10.1002/pmic.201300142> PMID: 23983189
51. Harshman SW, Canella A, Ciarlariello PD, Agarwal K, Branson OE, Rocci A, et al. Proteomic characterization of circulating extracellular vesicles identifies novel serum myeloma associated markers. *J Proteomics. Elsevier B.V.*; 2016; 136: 89–98. <https://doi.org/10.1016/j.jprot.2015.12.016> PMID: 26775013
52. Xu H, Yang L, Freitas MA. A robust linear regression based algorithm for automated evaluation of peptide identifications from shotgun proteomics by use of reversed-phase liquid chromatography retention time. *BMC Bioinformatics.* 2008; 9: 347. <https://doi.org/10.1186/1471-2105-9-347> PMID: 18713471
53. Xu H, Zhang L, Freitas MA. Identification and characterization of disulfide bonds in proteins and peptides from tandem MS data by use of the MassMatrix MS/MS search engine. *J Proteome Res.* 2008; 7: 138–144. <https://doi.org/10.1021/pr070363z> PMID: 18072732

54. Xu H, Freitas MA. A mass accuracy sensitive probability based scoring algorithm for database searching of tandem mass spectrometry data. *BMC Bioinformatics*. 2007; 8: 133. <https://doi.org/10.1186/1471-2105-8-133> PMID: 17448237
55. Xu H, Freitas MA. Monte carlo simulation-based algorithms for analysis of shotgun proteomic data. *J Proteome Res*. 2008; 7: 2605–2615. <https://doi.org/10.1021/pr800002u> PMID: 18543962
56. Mi H, Huang X, Muruganujan A, Tang H, Mills C, Kang D, et al. PANTHER version 11: expanded annotation data from Gene Ontology and Reactome pathways, and data analysis tool enhancements. *Nucleic Acids Res*. 2017; 45: D183–D189. <https://doi.org/10.1093/nar/gkw1138> PMID: 27899595
57. Mi H, Muruganujan A, Casagrande JT, protocols PTN, 2013. Large-scale gene function analysis with the PANTHER classification system. *naturecom*.
58. Nikolsky Y, Bryant J. Protein networks and pathway analysis. Preface. *Methods Mol Biol*. 2009; 563: v–vii. PMID: 19760825
59. Gowda H, Ivanisevic J, Johnson CH, Kurczyk ME, Benton HP, Rinehart D, et al. Interactive XCMS Online: Simplifying Advanced Metabolomic Data Processing and Subsequent Statistical Analyses. *Anal Chem*. 2014; 86: 6931–6939. <https://doi.org/10.1021/ac500734c> PMID: 24934772
60. Zhu Z-J, Schultz AW, Wang J, Johnson CH, Yannone SM, Patti GJ, et al. Liquid chromatography quadrupole time-of-flight mass spectrometry characterization of metabolites guided by the METLIN database. *Nat Protoc*. 2013; 8: 451–460. <https://doi.org/10.1038/nprot.2013.004> PMID: 23391889
61. Tautenhahn R, Cho K, Uritboonthai W, Zhu Z, Patti GJ, Siuzdak G. An accelerated workflow for untargeted metabolomics using the METLIN database. *Nature Publishing Group*. Nature Publishing Group; 2012; 30: 826–828. <https://doi.org/10.1038/nbt.2348> PMID: 22965049
62. Rinehart D, Johnson CH, Nguyen T, Ivanisevic J, Benton HP, Lloyd J, et al. Metabolomic data streaming for biology-dependent data acquisition. *Nature Publishing Group*. Nature Publishing Group; 2014; 32: 524–527. <https://doi.org/10.1038/nbt.2927> PMID: 24911492
63. Patti GJ, Tautenhahn R, Rinehart D, Cho K, Shriver LP, Manchester M, et al. A View from Above: Cloud Plots to Visualize Global Metabolomic Data. *Anal Chem*. 2013; 85: 798–804. <https://doi.org/10.1021/ac3029745> PMID: 23206250
64. Tautenhahn R, Patti GJ, Rinehart D, Siuzdak G. XCMS Online: A Web-Based Platform to Process Untargeted Metabolomic Data. *Anal Chem*. 2012; 84: 5035–5039. <https://doi.org/10.1021/ac300698c> PMID: 22533540
65. Benton HP, Ivanisevic J, Mahieu NG, Kurczyk ME, Johnson CH, Franco L, et al. Autonomous Metabolomics for Rapid Metabolite Identification in Global Profiling. *Anal Chem*. 2015; 87: 884–891. <https://doi.org/10.1021/ac5025649> PMID: 25496351
66. Benton HP, Want EJ, Ebbels T. Correction of mass calibration gaps in liquid chromatography-mass spectrometry metabolomics data. *Bioinformatics*. 2010.
67. Guijas C, Montenegro-Burke JR, Domingo-Almenara X, Palermo A, Warth B, Hermann G, et al. METLIN: A Technology Platform for Identifying Knowns and Unknowns. *Anal Chem*. 2018; 90: 3156–3164. <https://doi.org/10.1021/acs.analchem.7b04424> PMID: 29381867
68. Smith CA, O'Maille G, Want EJ, Qin C, Trauger SA, Brandon TR, et al. METLIN: a metabolite mass spectral database. *Ther Drug Monit*. 2005; 27: 747–751. PMID: 16404815
69. Wishart DS, Feunang YD, Marcu A, Guo AC, Liang K, Vázquez-Fresno R, et al. HMDB 4.0: the human metabolome database for 2018. *Nucleic Acids Res*. 2018; 46: D608–D617. <https://doi.org/10.1093/nar/gkx1089> PMID: 29140435
70. Wishart DS. HMDB 3.0—The Human Metabolome Database in 2013. *Nucleic Acids Res*. 2013; 41: D801–D807. <https://doi.org/10.1093/nar/gks1065> PMID: 23161693
71. Wishart DS. HMDB: a knowledgebase for the human metabolome. *Nucleic Acids Res*. 2009; 37: D603–D610. <https://doi.org/10.1093/nar/gkn810> PMID: 18953024
72. Wishart DS. HMDB: the Human Metabolome Database. *Nucleic Acids Res*. 2007; 35: D521–D526. <https://doi.org/10.1093/nar/gkl923> PMID: 17202168
73. Friedman J, Hastie T, Tibshirani R. Regularization Paths for Generalized Linear Models via Coordinate Descent. *Journal of Statistical Software*. 2010; 33: 1–22. PMID: 20808728
74. Guo Y, Gaiki S. Retention behavior of small polar compounds on polar stationary phases in hydrophilic interaction chromatography. *J Chromatogr A*. 2005; 1074: 71–80. <https://doi.org/10.1016/j.chroma.2005.03.058> PMID: 15941041
75. Alpert AJ. Effect of salts on retention in hydrophilic interaction chromatography. *J Chromatogr A*. Elsevier B.V; 2018; 1538: 45–53. <https://doi.org/10.1016/j.chroma.2018.01.038> PMID: 29395160
76. Kaiser D, Songo-Williams R, Drack E. Hydrogen ion and electrolyte excretion of the single human sweat gland. *Pflugers Arch*. 1974; 349: 63–72. PMID: 4857832

77. Yosipovitch G, Reis J, Tur E, Blau H, Harell D, Morduchowicz G, et al. Sweat electrolytes in patients with advanced renal failure. *J Lab Clin Med.* 1994; 124: 808–812. PMID: [7798794](#)
78. Clarys P, Clijnen R, Barel AO, Schouteden R, van Olst B, Aerenhouts D. Estimation of sweat rates during cycling exercise by means of the closed chamber condenser technology. *Skin Res Technol.* 2017; 23: 30–35. <https://doi.org/10.1111/srt.12297> PMID: [27273835](#)
79. Luque de Castro MD. Sweat as a clinical sample: what is done and what should be done. *Bioanalysis.* 2016; 8: 85–88. <https://doi.org/10.4155/bio.15.229> PMID: [26652242](#)