

Regional distribution of transpulmonary pressure

Pedro Leme Silva¹, Marcelo Gama de Abreu²

¹Laboratory of Pulmonary Investigation, Carlos Chagas Filho Institute of Biophysics, Federal University of Rio de Janeiro, Rio de Janeiro, Brazil;

²Pulmonary Engineering Group, Department of Anesthesiology and Intensive Care, University Hospital Carl Gustav Carus, Technische Universität Dresden, Dresden, Germany

Contributions: (I) Conception and design: All authors; (II) Administrative support: None; (III) Provision of study materials or patients: None; (IV) Collection and assembly of data: None; (V) Data analysis and interpretation: None; (VI) Manuscript writing: All authors; (VII) Final approval of manuscript: All authors.

Correspondence to: Marcelo Gama de Abreu, MD, MSc, PhD, DESA. Pulmonary Engineering Group, Department of Anesthesiology and Intensive Care, University Hospital Carl Gustav Carus, Technische Universität Dresden, 01307 Dresden, Germany. Email: mgabreu@uniklinikum-dresden.de.

Abstract: The pressure across the lung, so-called transpulmonary pressure (P_L), represents the main force acting toward to provide lung movement. During mechanical ventilation, P_L is provided by respiratory system pressurization, using specific ventilator setting settled by the operator, such as: tidal volume (V_T), positive end-expiratory pressure (PEEP), respiratory rate (RR), and inspiratory airway flow. Once P_L is developed throughout the lungs, its distribution is heterogeneous, being explained by the elastic properties of the lungs and pleural pressure gradient. There are different methods of P_L calculation, each one with importance and some limitations. Among the most known, it can be quoted: (I) direct measurement of P_L ; (II) elastance derived method at end-inspiration of P_L ; (III) transpulmonary driving pressure. Recent studies using pleural sensors in large animal models as also in human cadaver have added new and important information about P_L heterogeneous distribution across the lungs. Due to this heterogeneous distribution, lung damage could happen in specific areas of the lung. In addition, it is widely accepted that high P_L can cause lung damage, however the way it is delivered, whether it's compressible or tensile, may also further damage despite the values of P_L achieved. According to heterogeneous distribution of P_L across the lungs, the interstitium and lymphatic vessels may also interplay to disseminate lung inflammation toward peripheral organs through thoracic lymph tracts. Thus, it is conceivable that juxta-diaphragmatic area associated strong efforts leading to high values of P_L may be a source of dissemination of inflammatory cells, large molecules, and plasma contents able to perpetuate inflammation in distal organs.

Keywords: Transpulmonary pressure (P_L); regional ventilation; lung elastance; lymphatic lymph flow; inflammation

Submitted Aug 31, 2018. Accepted for publication Sep 20, 2018.

doi: 10.21037/atm.2018.10.03

View this article at: <http://dx.doi.org/10.21037/atm.2018.10.03>

Transpulmonary pressure (P_L) and structural components of the alveolo-capillary membrane

During spontaneous breathing in normal subjects, the inspiratory effort that is exerted by respiratory muscles decreases the already negative pleural pressure further, and drags lung tissue from the resting position (functional residual capacity) toward a superior point in the pressure-volume (PV) curve. The pressure gradient across the lung is

termed “transpulmonary pressure” (P_L).

Positive pressure mechanical ventilation differs considerably from the physiologic negative pressure that is generated by spontaneous breathing, as present in humans. In normal ventilation, humans are able to vary the breathing pattern within specific amplitude and time domains (1), and increase/decrease ventilation rate as a consequence of metabolic fluctuations. On the other hand, mechanical ventilators pressurize the respiratory system using a tidal

volume (V_T), positive end-expiratory pressure (PEEP), respiratory rate (RR), and inspiratory airway flow (V'), which are adjusted by the operator. During spontaneous breathing or positive mechanical ventilation, for the overall lung expansion, certain components of the alveolar-capillary membrane need to be stretched by P_L , for example epithelial and endothelial cells, fibroblasts and extracellular matrix (ECM) itself. Importantly, both the degree and the rate of stretch each of these cells as well as matrix components may promote damage, resulting in so-called ventilator-induced lung injury (VILI) (2).

Despite their relatively high numbers and importance in terms of responsiveness to cyclic stretch by genomic alterations (3), as well as synthesis and secretion of ECM proteins (4), the contribution of cells to the mechanical properties of lungs is comparatively small. In fact, collagen, elastin and proteoglycans (PGs) confer the majority of mechanical properties of the lungs. Collagen represents one of the major proteins resisting the load induced by large P_L variation, while elastin confers the elastic recoil to the resting position (5). Other important load-bearing proteins are glycoproteins (fibronectin and laminin), glycosaminoglycans (GAGs), and PGs (6). The non-fibrillar component, mainly hyaluron, and PG, connects the collagen and elastin fibers extremities, which can stabilize the ECM scaffold (2). It has been acknowledged that there is a threshold where the stress-strain relationship of this compartment loses its linearity, which corresponds to the point at which the ECM fibers of the lung skeleton become fully unfolded.

P_L is heterogeneously distributed across the vertical gradient of the lung

Since the introduction of radioactive gases in investigations of the respiratory system (7,8), it is well known that the regional distribution of inspired gas across normal lungs is heterogeneous, being partly explained by the elastic properties of the lungs and vertical gradient of pleural pressure (9). For example, at low lung volume (below the resting position, i.e. FRC), the most dependent lung zones can be exposed to more positive pleural pressure and, as a consequence, are the first to close their distal airways during deflation and the last to reopen them during the next inflation, which in turn can affect the static volume-pressure (PV) relationship of the lungs (10). The PV curve can also be affected by posture. Washko *et al.* showed in healthy subjects that the average decrease in P_L from the upright

to supine is lower than 3 cmH₂O (11). Nevertheless, even adding 3 cmH₂O for a compensation shift of the PV curve, healthy individuals may still show negative values of P_L . The authors have used esophageal pressure (P_{es}) manometry as surrogate of pleural pressure variation, and it is clear that P_{es} , at best, reflects the pressure in neighbor pleural space regions, overestimating it in non-dependent regions due to mediastinum mass displacement, and underestimating it in dependent areas (12).

There are different methods that can be used to calculate P_L , ranging from direct measurement of P_L at end-expiration to the elastance derived method at end-inspiration. Also, transpulmonary driving pressure (ΔP_L) can be calculated in different ways. All those methods show advantages and have limitations (13). Recently, it has been pointed out some implications about these different methods of P_L calculation:

Direct measurement of P_L

After placing intra-pleural sensors both in dependent and non-dependent regions in large animal model of lung injury and human cadavers, Yoshida *et al.* (14) were able to show that the esophageal pressure balloon, that is, the P_{es} measurement, more closely reflects the intra-pleural pressure in dependent lung zones. In addition, the measurements were done at different PEEP levels. At the lowest PEEP level, P_L at end-expiration was negative for both animal and human cadaver models. If they were placed according to an esophageal-pressure-guided protocol (15), they would have their PEEP levels adjusted at 8 and 10 cmH₂O, respectively, without taking into account the oxygenation index. In healthy individuals, it has been shown that the superimposed pressure across the vertical gradient is approximately 4.5 cmH₂O (16). Since the P_{es} signal better reflects the pressure conditions around itself, it is conceivable that the PEEP level in subjects would be adjusted to 5 cmH₂O (15). On the other hand, in ARDS patients, the most dependent lung region can achieve superimposed pressure as high as 10.5 cmH₂O, which might represent the lowest value of PEEP in these patients when aiming to keep those zones open at end-expiration.

Elastance derived method at end-inspiration of P_L

This is a simplified method that computes P_L as the product of the airway pressure during tidal inflation and the ratio between lung and respiratory system elastance. Thereby,

the measurement of absolute P_{es} is not required. On the other hand, one should assume that the lung and respiratory system PV curves are linear in the range of PEEP and V_T used in clinical settings (17). Recently, Yoshida *et al.* (14) showed that the elastance derived method at end-inspiration overestimated P_L . Authors concluded that this would not necessarily invalidate the method, but instead indicated that this technique delivered the highest level of inspiratory lung stress, which might be guide adjustments of mechanical ventilation aimed at avoiding VILI. Another study showed that the PEEP level necessary to reach an end-expiratory P_L of 0 cmH₂O differed from the PEEP level targeting a chest-wall elastance-based end-inspiratory P_L of 26 cmH₂O (18). Thus, in ARDS patients, a combination of both methods would be misleading.

Transpulmonary driving pressure (ΔP_L)

The transpulmonary driving pressure (ΔP_L) is defined as the difference between P_L at end-inspiration and P_L at end-expiration. It reflects the distending pressure taken by the lungs when V_T is delivered. The use of ΔP_L offers some advantages against absolute P_L values. First, ΔP_L does not account for the static stress caused by PEEP, which contributes less to lung injury and sometimes can mitigate it (19). Second, ΔP_L is not influenced by the distending pressure necessary to move the chest wall (20). Third, it is conceivable the ΔP_L would better reflect the presence of regional inhomogeneity in mechanical properties. An increase in ΔP_L would better suggest local tissue tension than respiratory system parameters which may carry some artifacts (21). Hence, it seems that ΔP_L might be a better surrogate of lung stress and may even be a better predictor of clinical outcomes than ΔP (22). ΔP_L is calculated as:

$$\Delta P_L = (P_{PLAT} - P_{ESO, \text{end-insp}}) - (PEEP_{TOT} - P_{ESO, \text{end-exp}}) \quad [1]$$

Further analyzing the Yoshida's paper, about regional P_L , it can be drawn some conclusions about regional ΔP_L (Inspiration – Expiration) due to the presence of dependent and non-dependent sensors at different PEEP levels. At low PEEP level (4 cmH₂O), in which the authors recognized the presence of ~30% atelectasis, the inspiratory and expiratory P_L were 6 and -2.5 cmH₂O, and the ΔP_L was 8.5 cmH₂O at dependent areas, higher than the non-dependent, in which the ΔP_L was 6 cmH₂O. Likely, the regional increment in ΔP_L at dependent area can be dependent of opening and closing instability, in which some areas may suffer from cyclic overdistension. At a high PEEP level (for example,

24 cmH₂O), in the absence of atelectasis, the ΔP_L was 7 cmH₂O in non-dependent areas, and 5 cmH₂O in dependent areas, likely reflecting locally overdistension (Figure 1). Although these values seem relatively low, it must be kept in mind that they reflect the lung compartment only. Nevertheless, during assisted spontaneous breathing the effect of regional ΔP_L can be very extreme.

P_L during assisted spontaneous breathing: unraveling effector

A previous experimental study using pleural sensors showed a uniform distribution of ΔP_L along the gravitation gradient during spontaneous breathing (23). However, this was assessed in healthy subjects, and probably may reflect the homogeneous stress distribution across the lung surface, by decreasing P_{pl} at all points. In contrast, in lung disease, the stress distribution may be inhomogeneous, mainly due to altered ventilation and the shape of diaphragm. Yoshida *et al.* showed that in an injured lung, local negative pleural pressure generated by diaphragmatic contraction is not uniformly transmitted, but is concentrated in dependent lung done. More importantly, esophageal manometry underestimated the respiratory efforts swings (24). It's reasonable that, during lung-protective ventilation with low V_T , the presence of increased inspiratory efforts can result in a hidden and local P_L of the dependent lung. In this line, Bellani *et al.* compared the ΔP_L during spontaneous assisted breathing and fully controlled ventilation, trying to match similar conditions of airflow and volume between both ventilatory conditions (25). For this purpose, in order to achieve matched volumes and airflows, the authors performed the analysis only on combinations of similar mean inspiratory flows between spontaneous assisted and controlled ventilations, discarding the others combinations of volumes and airflows for the same timeframe. Although, this reflects the careful methodologic approach performed by the authors, it poorly reflects the clinical condition presented by critical ill patient with distinct airflow and volumes. In addition, the effect of ΔP_L whether in spontaneous assisted or controlled ventilation on gas exchange and global hemodynamics could not be evaluated. On the other hand, Henzler *et al.* (26) studied the effects of compared spontaneous breathing during BIPAP with controlled ventilation by matching ΔP_L on gas exchange and hemodynamics. Interestingly, they showed similar effects on arterial partial oxygen pressure, but higher oxygen delivery in spontaneous breathing during BIPAP than controlled

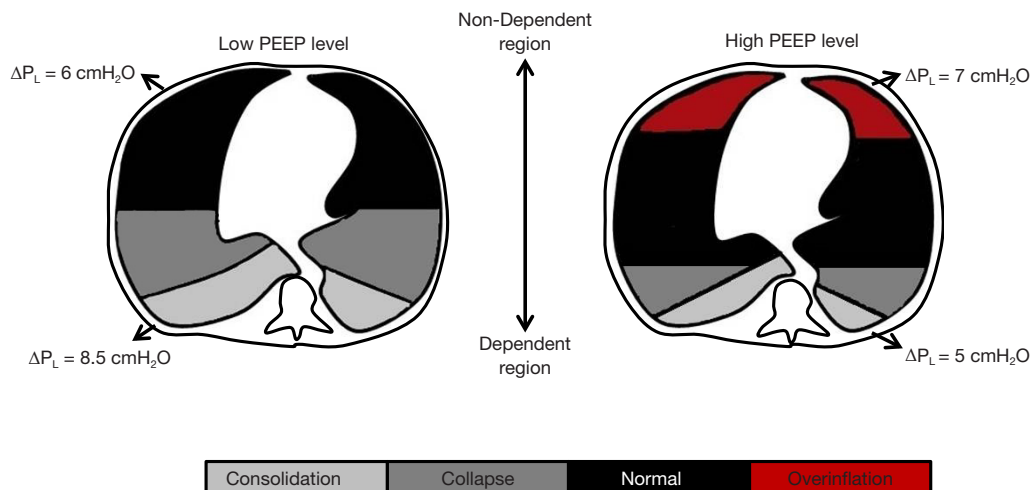


Figure 1 Schematic drawing showing two theoretical conditions at low and high PEEP levels. At low PEEP level, the transpulmonary driving pressure (ΔP_L) is higher at the dependent lung region, and could be explained by the presence of opening and closing, in which some areas may suffer from cyclic recruitment. At high PEEP level, the ΔP_L is higher at the non-dependent lung region likely reflecting locally overdistension.

ventilation, which may be related to better hemodynamic. In order to achieve comparable ΔP_L between spontaneous breathing and controlled ventilation, V_T was increased up to 12 ml/kg, one more indicative that comparable ΔP_L cannot be achieved by similar V_T and airflow between spontaneous breathing and controlled ventilation.

High ΔP_L may cause harm to the lungs but does the way that it is delivered matter?

During controlled ventilation, ΔP_L is achieved by a positive increase in airway and pleural pressures, leading to compressive stress into the lung structure. Although, it's widely accepted that alveolar pressure rarely shows lower values compared to pleural pressure, the delivery of stress into the alveolar surface during controlled ventilation (compressive stress) can substantially differ from that observed during spontaneous breathing (tensile stress). In fact, this has been observed at the cellular level (27). One way to compare compressive and tensile stresses is through the application of whole-body chamber and the application of negative pressure to the thorax and/or abdomen. In this line, Grasso *et al.* showed that ventilation with negative pressure may fundamentally differ from that achieved with positive pressure in terms of transmission of applied pressure, development of transpulmonary distending pressure, volumes of recruited lung, and distribution of lung aeration during inspiration

and expiration. Additionally, both negative and positive pressures ventilation were matched by V_T of 12 mL/kg, which nowadays, would not be feasible to clinical practice in ARDS condition. In a sequential study, by applying constant or transient negative abdominal pressures, authors showed that applying a distending pressure over a broad abdominal area associated to PEEP led to the recruitment of atelectatic areas, closer to diaphragmatic lung regions. In addition, the application of continuous negative abdominal pressure with PEEP or PEEP alone led to similar values of esophageal pressure. This reflects that regional recruitment did not affect overall chest wall compliance, and could be more related to a region juxta diaphragmatic. In fact, this has been observed elsewhere (24). More recently, continuous negative abdominal pressure (-5 cmH₂O) was associated to protection against VILI (28). The mechanism of protection may rely on the selective recruitment of dorsal atelectatic lung, which may increase the area to be ventilated and reduce the stress across caused by V_T . This regional recruitment is achievable by mitigating the abdominal influence into the thoracic cavity and reducing Ppl in the dependent regions, which in turn can increase the regional P_L . This regional recruitment is different from that obtained by PEEP increase, which may overinflate those regions already inflated, usually observed in non-recruitable lungs (29). Additionally, in rats, it has been shown that gentle spontaneous breathing with esophageal pressure variation around 2.5 cmH₂O and moderate PEEP

level reduced inflammatory mediators as also maintained epithelial integrity (30). The esophageal decay and the generated P_L performed in rats represents one-half to that performed in healthy humans (31), reaching values around 5 cmH₂O for a quite breathing pattern. Therefore, taking into account the magnitude of decrease in continuous negative abdominal pressure done in experimental scenario (-5 cmH₂O), it is quite conceivable to have these beneficial effects of spontaneous breathing, which would represent the tensile stress, in mild ARDS patients with gentle inspiratory efforts (-5 cmH₂O) (32) when medium levels of pressure support are adjusted (25).

Regional distribution of ΔP_L and edema development: Can interstitium and lymph flow intermediate this interaction?

Increased inspiratory efforts during mechanical ventilation reduce intrapleural pressure which can achieve sub-atmospheric, i.e., negative levels. Pleural space has been acknowledged as an interstitial tissue devoid of solid matrix (33) and its pressure can be considered the sum of pleural liquid pressure (P_{liq}) with dynamic deformation pressure (P_{def}) exerted at focal points of contacts between sliding surfaces. The lymphatic flux depends on lymphatic conductance and intraluminal hydraulic pressure (P_{lymph}). It has been shown that P_{lymph} significantly decreases during spontaneous breathing, but not in controlled mechanical ventilation. This depicts that to produce and move lymph fluids from peripheral regions of the lung forward, there is a dependence of cardiorespiratory activity (34,35). Interesting, it has been shown a dependence of lung height for fluids propagation from peripheral regions of lung parenchyma and regional pleural lymphatic flux toward drainage thoracic lymph tracts. From the highest (non-dependent) to the lowest (dependent) sites of pleural compartments, there is a progressively increase in lymphatic flux, supporting the existence of local differences in fluid dynamics in the pleural and lung compartments. The higher lymphatic flux at the dependent lung regions added by the intense ΔP_L presented at this region may favor the occurrence of interstitial and/or alveolar edema formation. At the initial stage of edema formation, fluid accumulation in lung parenchyma is mainly prevented by lymphatic activity (36). However, mechanical ventilation with the presence of inspiratory effort is associated to local increment in ΔP_L . These large swings may disturb ECM organization (27) and provoke distortion or

decrement in PGs content, which have important roles in maintaining the dryness of lung tissue (35) by pushing outward against the nonextensible collagen fibers due to their energy of hydration (27). In addition, the increase in pulmonary capillary permeability, inherent to several lung conditions, can likely increase the translocation of fluids from interstitium toward alveolar space (37). Within this scenario, the lymph flow activity may not pace the rhythm of edema formation, which at last stage is characterized by flooded alveoli, mainly at the dependent lung regions.

Considering the preservation of lymph flow conductance, the maintenance of mild-to-moderate spontaneous breathing during mechanical ventilation may enhance lymph flow and contribute to clearance of edema from lungs (38). This beneficial effect was not observed after solely PEEP application (39). However, it is not clear whether this exchange of fluids from thoracic to abdominal cavities may be dangerous. Although the communication between abdominal and thoracic cavities through the lymph flow has been reported (40,41), the likely consequences of this dangerous talk are poorly described. Papazian *et al.* (42) showed that the early administration of a neuromuscular blocking agent improved the adjusted 90-day survival and increased the time off the ventilator without increasing muscle weakness. One of the attributed reasons for clinical improvement was the prevention of asynchrony and decrease in metabolic needs demanded by the respiratory muscles in the early phase of mechanical ventilation in ARDS (43). One contributing factor could be the dissemination of inflammatory cells and their milieu from the thoracic cavity where the lungs is situated toward abdominal cavity perpetuating the distal inflammatory response. This phenomenon has been observed in intestinal ischemia and reperfusion experimental studies causing bronchial hyper-reactivity (44,45). Whether the implementation of assisted spontaneous breathing during the early phase of ARDS, when the primary cause to institute the mechanical ventilation has not been solved, may perpetuate distal inflammation through lymph flow is not known. In a previous European cohort study, Esteban *et al.* (46) showed that the weaning period represents around 40% of the total duration of stay in ICU. Similar proportion could be admitted in a recent and large observational study about the prevalence of ARDS (47), since the total time of invasive mechanical ventilation was comparable (around 8 days). Experimental studies have highlighted that spontaneous breathing promotes trans-diaphragmatic lymphatic return (48), which may affect extrapulmonary

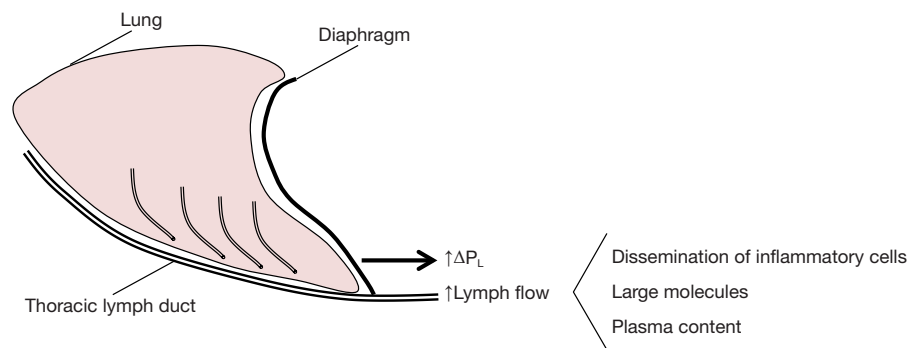


Figure 2 Schematic drawing showing the lateral view of lung and diaphragm. At the dependent region, where ΔP_L is higher due to intense decrease in pleural by inspiratory effort, it may favor lymph flow spreading which may contain inflammatory cells, large molecules, and plasma content which may trigger distal organ failure.

organs. Taking into account the regional P_L at the juxta-diaphragmatic area with strong efforts (24), it is possible that this region could represent the source of dissemination of inflammatory cells, large molecules and plasma contents able to trigger and perpetuate inflammation in distal organ (Figure 2).

Conclusions

The net increment in pressure domain related to the lung expansion represents the P_L , which can distort some important components of the alveolar-capillary membrane. This distortion promoted by P_L is heterogeneous across the vertical gradient of the lungs. There are different forms of calculation of P_L , each one with own strengths and limitations. The heterogeneous distribution of P_L seems to be important in several conditions during mechanical ventilation, but especially during assisted spontaneous breathing, where pleural pressure swings could be magnified at the dependent regions if inappropriate PEEP levels are used. The consequences of this localized P_L are not fully recognized. Here, we pointed out the importance of this P_L heterogeneity related to lymph flow drainage, which can communicate thoracic and abdominal cavities and contribute to spread inflammation.

Acknowledgements

Funding: This work was supported by grants from the Carlos Chagas Filho Rio de Janeiro State Research Foundation (FAPERJ) (grant number E-26/202.869/2015), Rio de Janeiro, Brazil; and the Brazilian Council for Scientific and Technological Development (CNPq) (grant

number 471438/2012-0), Brasília, Brazil.

Footnote

Conflicts of Interest: The authors have no conflicts of interest to declare.

References

1. Tobin MJ, Mador MJ, Guenther SM, et al. Variability of resting respiratory drive and timing in healthy subjects. *J Appl Physiol* (1985) 1988;65:309-17.
2. Silva PL, Negrini D, Rocco PR. Mechanisms of ventilator-induced lung injury in healthy lungs. *Best Pract Res Clin Anaesthesiol* 2015;29:301-13.
3. Yerrapureddy A, Tobias J, Margulies SS. Cyclic stretch magnitude and duration affect rat alveolar epithelial gene expression. *Cell Physiol Biochem* 2010;25:113-22.
4. Roan E, Waters CM. What do we know about mechanical strain in lung alveoli? *Am J Physiol Lung Cell Mol Physiol* 2011;301:L625-35.
5. Gattinoni L, Carlesso E, Cadringer P, et al. Physical and biological triggers of ventilator-induced lung injury and its prevention. *Eur Respir J Suppl* 2003;47:15s-25s.
6. Cruz FF, Rocco PRM, Pelosi P. Role of the extracellular matrix in the genesis of ventilator-induced lung injury. *Med Klin Intensivmed Notfmed* 2018;113:2-6.
7. Ball WC Jr, Stewart PB, Newsham LG, et al. Regional pulmonary function studied with xenon 133. *J Clin Invest* 1962;41:519-31.
8. Glaister DH. The effect of posture on the distribution of ventilation and blood flow in the normal lung. *Clin Sci* 1967;33:391-8.

9. Lai-Fook SJ, Beck KC, Southorn PA. Pleural liquid pressure measured by micropipettes in rabbits. *J Appl Physiol Respir Environ Exerc Physiol* 1984;56:1633-9.
10. Sutherland PW, Katsura T, Milic-Emili J. Previous volume history of the lung and regional distribution of gas. *J Appl Physiol* 1968;25:566-74.
11. Washko GR, O'Donnell CR, Loring SH. Volume-related and volume-independent effects of posture on esophageal and transpulmonary pressures in healthy subjects. *J Appl Physiol* (1985) 2006;100:753-8.
12. Hubmayr RD, Walters BJ, Chevalier PA, et al. Topographical distribution of regional lung volume in anesthetized dogs. *J Appl Physiol Respir Environ Exerc Physiol* 1983;54:1048-56.
13. Grieco DL, Chen L, Brochard L. Transpulmonary pressure: importance and limits. *Ann Transl Med* 2017;5:285.
14. Yoshida T, Amato MBP, Grieco DL, et al. Esophageal Manometry and Regional Transpulmonary Pressure in Lung Injury. *Am J Respir Crit Care Med* 2018;197:1018-26.
15. Talmor D, Sarge T, O'Donnell CR, et al. Esophageal and transpulmonary pressures in acute respiratory failure. *Crit Care Med* 2006;34:1389-94.
16. Pelosi P, D'Andrea L, Vitale G, et al. Vertical gradient of regional lung inflation in adult respiratory distress syndrome. *Am J Respir Crit Care Med* 1994;149:8-13.
17. Chiumello D, Cressoni M, Colombo A, et al. The assessment of transpulmonary pressure in mechanically ventilated ARDS patients. *Intensive Care Med* 2014;40:1670-8.
18. Gulati G, Novero A, Loring SH, et al. Pleural pressure and optimal positive end-expiratory pressure based on esophageal pressure versus chest wall elastance: incompatible results*. *Crit Care Med* 2013;41:1951-7.
19. Protti A, Andreis DT, Monti M, et al. Lung stress and strain during mechanical ventilation: any difference between statics and dynamics? *Crit Care Med* 2013;41:1046-55.
20. Cortes-Puentes GA, Keenan JC, Adams AB, et al. Impact of Chest Wall Modifications and Lung Injury on the Correspondence Between Airway and Transpulmonary Driving Pressures. *Crit Care Med* 2015;43:e287-95.
21. Marini JJ, Jaber S. Dynamic predictors of VILI risk: beyond the driving pressure. *Intensive Care Med* 2016;42:1597-600.
22. Baedorf Kassis E, Loring SH, Talmor D. Mortality and pulmonary mechanics in relation to respiratory system and transpulmonary driving pressures in ARDS. *Intensive Care Med* 2016;42:1206-13.
23. Minh VD, Friedman PJ, Kurihara N, et al. Ipsilateral transpulmonary pressures during unilateral electrophrenic respiration. *J Appl Physiol* 1974;37:505-9.
24. Yoshida T, Torsani V, Gomes S, et al. Spontaneous effort causes occult pendelluft during mechanical ventilation. *Am J Respir Crit Care Med* 2013;188:1420-7.
25. Bellani G, Grasselli G, Teggie-Droghi M, et al. Do spontaneous and mechanical breathing have similar effects on average transpulmonary and alveolar pressure? A clinical crossover study. *Crit Care* 2016;20:142.
26. Henzler D, Dembinski R, Bensberg R, et al. Ventilation with biphasic positive airway pressure in experimental lung injury. Influence of transpulmonary pressure on gas exchange and haemodynamics. *Intensive Care Med* 2004;30:935-43.
27. Ingber DE. Cellular mechanotransduction: putting all the pieces together again. *Faseb J* 2006;20:811-27.
28. Yoshida T, Engelberts D, Otulakowski G, et al. Continuous Negative Abdominal Pressure Reduces Ventilator-induced Lung Injury in a Porcine Model. *Anesthesiology* 2018;129:163-72.
29. Gattinoni L, Caironi P, Cressoni M, et al. Lung recruitment in patients with the acute respiratory distress syndrome. *N Engl J Med* 2006;354:1775-86.
30. Magalhaes PAF, Padilha GA, Moraes L, et al. Effects of pressure support ventilation on ventilator-induced lung injury in mild acute respiratory distress syndrome depend on level of positive end-expiratory pressure: A randomised animal study. *Eur J Anaesthesiol* 2018;35:298-306.
31. Thammanomai A, Hamakawa H, Bartolak-Suki E, et al. Combined effects of ventilation mode and positive end-expiratory pressure on mechanics, gas exchange and the epithelium in mice with acute lung injury. *PLoS One* 2013;8:e53934.
32. Yoshida T, Uchiyama A, Fujino Y. The role of spontaneous effort during mechanical ventilation: normal lung versus injured lung. *J Intensive Care* 2015;3:18.
33. Negrini D, Moriondo A. Pleural function and lymphatics. *Acta Physiol (Oxf)* 2013;207:244-59.
34. Negrini D, Moriondo A, Mukenge S. Transmural pressure during cardiogenic oscillations in rodent diaphragmatic lymphatic vessels. *Lymphat Res Biol* 2004;2:69-81.
35. Moriondo A, Grimaldi A, Sciacca L, et al. Regional recruitment of rat diaphragmatic lymphatics in response to increased pleural or peritoneal fluid load. *J Physiol* 2007;579:835-47.

36. Negrini D. Pulmonary microvascular pressure profile during development of hydrostatic edema. *Microcirculation* 1995;2:173-80.
37. Yoshida T, Fujino Y, Amato MB, et al. Fifty Years of Research in ARDS. Spontaneous Breathing during Mechanical Ventilation. Risks, Mechanisms, and Management. *Am J Respir Crit Care Med* 2017;195:985-92.
38. Frostell C, Blomqvist H, Hedenstierna G, et al. Thoracic and abdominal lymph drainage in relation to mechanical ventilation and PEEP. *Acta Anaesthesiol Scand* 1987;31:405-12.
39. Maybauer DM, Talke PO, Westphal M, et al. Positive end-expiratory pressure ventilation increases extravascular lung water due to a decrease in lung lymph flow. *Anaesth Intensive Care* 2006;34:329-33.
40. Ranieri VM, Suter PM, Tortorella C, et al. Effect of mechanical ventilation on inflammatory mediators in patients with acute respiratory distress syndrome: a randomized controlled trial. *JAMA* 1999;282:54-61.
41. Slutsky AS, Tremblay LN. Multiple system organ failure. Is mechanical ventilation a contributing factor? *Am J Respir Crit Care Med* 1998;157:1721-5.
42. Papazian L, Forel JM, Gacouin A, et al. Neuromuscular blockers in early acute respiratory distress syndrome. *N Engl J Med* 2010;363:1107-16.
43. Slutsky AS, Ranieri VM. Ventilator-induced lung injury. *N Engl J Med* 2013;369:2126-36.
44. Coelho FR, Cavriani G, Soares AL, et al. Lymphatic-borne IL-1beta and the inducible isoform of nitric oxide synthase trigger the bronchial hyporesponsiveness after intestinal ischemia/reperfusion in rats. *Shock* 2007;28:694-9.
45. Cavriani G, Domingos HV, Oliveira-Filho RM, et al. Lymphatic thoracic duct ligation modulates the serum levels of IL-1beta and IL-10 after intestinal ischemia/reperfusion in rats with the involvement of tumor necrosis factor alpha and nitric oxide. *Shock* 2007;27:209-13.
46. Esteban A, Frutos-Vivar F, Muriel A, et al. Evolution of mortality over time in patients receiving mechanical ventilation. *Am J Respir Crit Care Med* 2013;188:220-30.
47. Bellani G, Laffey JG, Pham T, et al. Epidemiology, Patterns of Care, and Mortality for Patients With Acute Respiratory Distress Syndrome in Intensive Care Units in 50 Countries. *JAMA* 2016;315:788-800.
48. Lattuada M, Hedenstierna G. Abdominal lymph flow in an endotoxin sepsis model: influence of spontaneous breathing and mechanical ventilation. *Crit Care Med* 2006;34:2792-8.

Cite this article as: Silva PL, Gama de Abre M. Regional distribution of transpulmonary pressure. *Ann Transl Med* 2018;6(19):385. doi: 10.21037/atm.2018.10.03