

The Risk Factors of Subdural Hygroma after Decompressive Craniectomy

Byeong Oh Kim, Jong Yeon Kim, Kum Whang, Sung Min Cho, Ji-Woong Oh, Youn Moo Koo, Chul Hu, Jin Soo Pyen, and Jong Wook Choi

Department of Neurosurgery, Wonju Severance Christian Hospital, Yonsei University Wonju College of Medicine, Wonju, Korea

Objective: Subdural effusion, also known as subdural hygroma (SDG), is a secondary complication that can occur after decompressive craniectomy (DC). However, the pathogenesis of SDG is not fully understood. It is unclear whether SDG occurrence is related to preoperative patient status or surgical technique. The purpose of this study is to identify risk factors for SDG after DC.

Methods: Fifty-nine patients who underwent DC from January 2016 to December 2016 at the same institution were analyzed. We retrospectively reviewed the clinical and radiological features of the patients. We divided the patients into two groups based on the occurrence of SDG after DC. The risk factors for SDG were analyzed.

Results: The overall SDG rate after DC was 39% (23 patients). A statistically significant association was observed between preoperative diagnosis, e.g., subdural hemorrhage (SDH; odds ratio [OR], 4.99; 95% confidence interval [CI], 1.36–18.34) or subarachnoid hemorrhage (SAH; OR, 4.18; 95% CI, 1.07–16.32), and the occurrence of SDG after DC. Traumatic brain injury (OR, 4.91; 95% CI, 1.35–17.91) and preoperative cortical opening (OR, 4.77; 95% CI, 1.39–16.32) were important risk factors for SDG. Several surgical techniques did not show a statistically significant association with SDG. The occurrence of SDG after DC was related to the length of hospital stay ($p=0.012$), but not to prognosis.

Conclusion: After DC, SDG is not related to patients' prognosis but to the length of hospital stay. Therefore, it is necessary to study the occurrence of postoperative SDG by confirming the presence of preoperative SDH, SAH, and cortical opening. (Korean J Neurotrauma 2018;14(2):93-98)

KEY WORDS: Decompressive craniectomy · Subdural effusion · Subarachnoid hemorrhage.

Introduction

Decompressive craniectomy (DC) is performed when there is no response to primary medication therapy in the increased intracranial pressure (IICP) state.^{2,5,8)} However, various complications can occur after DC; one such compli-

cation, subdural hygroma (SDG), can be observed in 6% to 21% of patients.^{24,25)} Generally, the SDG that occurs after DC improves naturally.¹⁾ However, 6% to 32% of SDG can be converted to a chronic subdural hematoma (SDH);⁴⁾ depending on its degree, surgical treatment such as burr hole trephination may be required.¹⁾

There are many studies regarding the risk factors of SDG, including injury mechanism (such as motor vehicle accident, fall down injury, blow to head, etc.), Glasgow Coma Scale (GCS) at admission, preoperative midline shifting, accompanying subarachnoid hemorrhage (SAH), compression of basal cistern, and bone flap size of DC. There is no clear consensus in the papers published so far.^{10,26)}

Therefore, the aim of this study was to discover the risk factors and related prognosis of SDG from DC patients.

Received: July 5, 2018 / **Revised:** October 13, 2018

Accepted: October 15, 2018

Address for correspondence: Jong Wook Choi
Department of Neurosurgery, Wonju Severance Christian Hospital,
Yonsei University Wonju College of Medicine, 20 Ilsan-ro, Wonju
26426, Korea
Tel: +82-33-741-1364, Fax: +82-33-746-2287
E-mail: nschoi@yonsei.ac.kr

© This is an Open Access article distributed under the terms of Creative Attributions Non-Commercial License (<https://creativecommons.org/licenses/by-nc/4.0/>) which permits unrestricted noncommercial use, distribution, and reproduction in any medium, provided the original work is properly cited.

Materials and Methods

This study is a retrospective review based on a database of patients treated in a single institution from January 2016 to December 2016. A total of 59 patients who underwent DC for IICP management were included in this study. We set the independent variables as follows: 1) patient characteristics including gender, age, history, and etiology, etc.; in addition, patients who received DC due to non-traumatic brain injury (TBI), such as spontaneous cerebral hemorrhage or cerebral infarction were classified in the disease group; 2) preoperative computed tomography (CT) diagnoses such as epidural hemorrhage (EDH), SDH, SAH, intracerebral hemorrhage (ICH), intraventricular hemorrhage (IVH), without distinction between trauma and non-trauma; 3) preoperative CT finding such as basal cistern compression, cortical opening. And the cortical opening is defined as the SAH of the cortex and the ICH are in the same region; 4) operation parameters such as hemilaminectomy, duroplasty, bone flap size (Figure 1), distance of craniectomy margin from midline, extraventricular drainage; 5) prognostic value such as final Glasgow Outcome Scale (GOS) and length of hospital stay (HD). The dependent variables of this study are the event of postoperative SDG (Table 1). SDG was diagnosed if there was fluid collection in the subdural space on the CT scan from the immediate postoperative day to the last follow up day, even if there was no neurological change or mass effect.

Data are expressed according to the properties of the variable. Continuous variables are presented as mean and standard deviation. Categorical variables are presented as frequency and percentage. In order to compare the two groups,

we performed the two-sample *t*-test or χ^2 test (Fisher's exact test) as appropriate. Logistic regression analysis was used to identify the factors to predict SDG and the results were expressed as odds ratio (OR) with 95% confidence interval (CI). A *p*-value less than 0.05 was considered statistically significant and all statistical analyses were conducted using SPSS version 24 (IBM Corp., Armonk, NY, USA).

Results

The overall SDG rate after DC was 39% (23 patients) (Figure 2). There were 42 males and 17 females who underwent DC. The mean age of the patients was 57.8 years. The patients' age and gender were not significantly different between the SDG group and the non-SDG group. There was also no significant difference between the SDG group and the non-SDG group in terms of the patient's past history such as hypertension, diabetes mellitus, and bleeding tendency due to liver disease, using antiplatelet agent, and preoperative coagulopathy. Moreover, preoperative GCS showed no significant difference between SDG and non-SDG groups. In studying the etiology of brain injury, the incidence of SDG was higher in patients who underwent DC for TBI than in patients who received DC for disease (cerebral infarction, spontaneous brain hemorrhage, etc.) ($p=0.018$). Preoperative diagnosis showed a statistically significant higher incidence of postoperative SDG in patients with SDH ($p=0.018$) and SAH ($p=0.020$). Preoperative CT findings showed a statistically significant higher incidence of postoperative SDG in patients with cortical opening ($p=0.007$). However, there was no significant difference between the SDG and non-

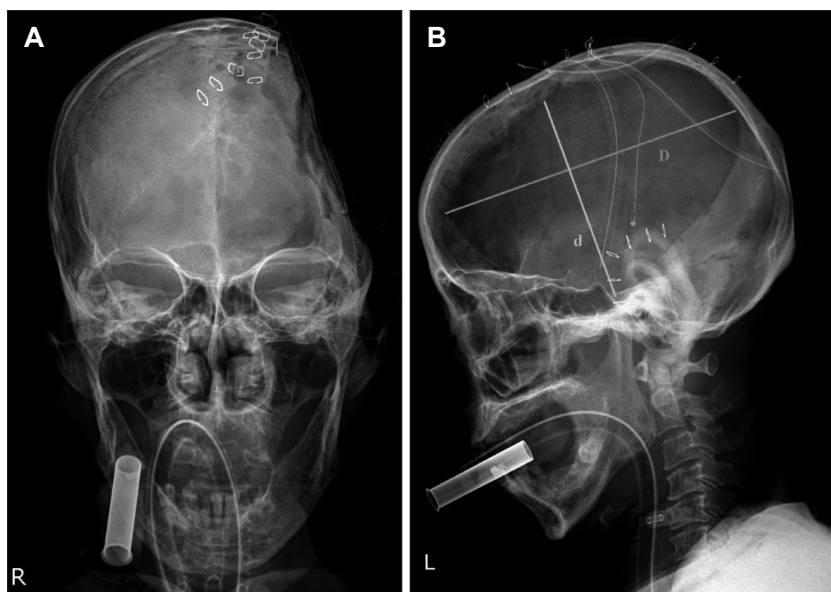


FIGURE 1. (A, B) The skull anteroposterior/lateral images. (B) Bone flap size measure: largest transverse diameter (D) × vertical diameter perpendicular to D (d) × $\pi/4$. m: craniectomy margin from midline.

SDG groups in the operative parameters (Table 1).

Under logistic regression between the preoperative diagnosis and the occurrence of SDG, there was a statistical association with SDH (OR, 4.99; 95% CI, 1.36–18.34) and SAH (OR, 4.18; 95% CI, 1.07–16.32). The other diagnoses such as EDH, ICH, IVH, and cortical hemorrhage were not related to occurrence of SDG after DC (Table 2).

Also, under logistic regression between the pre/postoperative risk factors and the occurrence of SDG, there was a statistical association with preoperative cortical opening (OR, 4.77; 95% CI, 1.39–16.32) and preoperative TBI (OR, 4.91; 95% CI, 1.35–17.91). The other pre/postoperative risk factors were not related to occurrence of SDG after DC. That is, the incidence of SDG was higher when DC was performed with TBI or when there was an accompanying preoperative cortical opening (Table 3).

The GOS was compared between the SDG and non-SDG groups. Good prognosis (GOS 1–3) was observed in 10 patients (SDG) and 16 patients (non-SDG), and poor prognosis (GOS 4–5) in 13 patients (SDG) and 20 patients (non-SDG). There was no statistically significant difference in GOS score between the two groups ($p=0.578$). However, HD was significantly higher in the SDG group than in the non-SDG group (78.3 days vs. 47.9 days) ($p=0.012$) (Table 4).

Discussion

DC is performed when there is no response to primary medication therapy in the IICP state.^{2,5,8} Several complications have been reported after DC for IICP management. Postoperative hemorrhage, brain herniation through craniectomy defect, post traumatic epilepsy, intracranial infec-

TABLE 1. Univariate analysis of patient characteristics and subdural hygroma occurrence

	Total (n=59)	SDG (n=23)	Non-SDG (n=36)	p-value
Demographic features				
Gender (male)	42 (71.2%)	14 (60.9%)	28 (77.8%)	0.162
Age	57.83 ± 16.0	58.83 ± 17.7	57.19 ± 15.1	0.706
History				
HTN	19 (32.2%)	7 (30.4%)	12 (33.3%)	0.816
DM	8 (13.6%)	6 (26.1%)	2 (5.6%)	0.464*
Bleeding tendency [†]	18 (30.5%)	6 (26.1%)	12 (33.3%)	0.555
Etiology				
Disease [§]	24 (40.7%)	5 (21.7%)	19 (52.8%)	0.018 [†]
TBI	35 (59.3%)	18 (78.3%)	17 (47.2%)	
Preoperative GCS		7.6 ± 3.33	8.3 ± 4.39	0.473
Preoperative diagnosis [§]				
SDH	35 (59.3%)	18 (78.3%)	17 (47.2%)	0.018 [†]
EDH	5 (8.5%)	2 (8.7%)	3 (8.3%)	1.000*
SAH	38 (64.4%)	19 (82.6%)	19 (52.8%)	0.020 [†]
ICH	35 (59.3%)	16 (69.6%)	19 (52.8%)	0.200
IVH	16 (27.1%)	7 (30.4%)	9 (25.0%)	0.647
Cortical hemorrhage	18 (30.5%)	9 (39.1%)	9 (25.0%)	0.250
Preoperative CT finding				
Basal cistern compression	39 (66.1%)	14 (60.9%)	25 (69.4%)	0.497
Cortical opening	21 (35.6%)	13 (56.5%)	8 (22.2%)	0.007 [†]
Operative parameters				
Hemicraniectomy	57 (96.6%)	22 (95.7%)	35 (97.2%)	1.000*
Duroplasty	55 (93.2%)	22 (95.7%)	33 (91.7%)	1.000*
Bone flap size (cm ²) [†]	217.9 ± 65.8	233.4 ± 56.8	207.4 ± 70.1	0.145
Craniectomy margin from midline (mm)	23.5 ± 8.6	23.8 ± 9.6	23.1 ± 7.0	0.793
EVD insertion	17 (28.8%)	5 (21.7%)	12 (33.3%)	0.338

The data is presented as mean ± standard deviation or number (%). *Fisher's exact test, [†]statistical significance based on two-sample *t*-test or χ^2 test, [‡]preoperative liver disease, antiplatelet medication, coagulopathy history, [§]disease: non-TBI, [†]bone flap size: calculated by Figure 2. SDG: subdural hygroma, HTN: hypertension, DM: diabetes mellitus, TBI: traumatic brain injury, GCS: Glasgow Coma Scale, SDH: subdural hematoma, EDH: epidural hemorrhage, SAH: subarachnoid hemorrhage (including traumatic SAH and spontaneous SAH), ICH: intracerebral hemorrhage, IVH: intraventricular hemorrhage, CT: computed tomography, EVD: external ventricular drainage

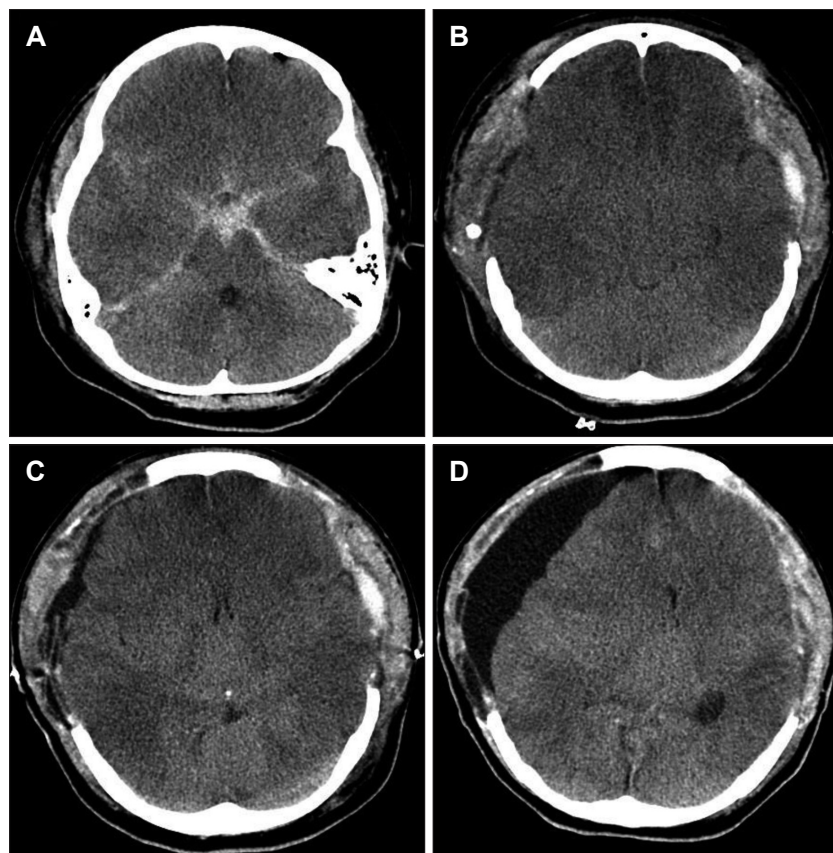


FIGURE 2. The computed tomography (CT) images of a 19-year-old female having fall down injury. (A) Traumatic subarachnoid hemorrhage on all cistern and basal cistern compression was noted. (B) Immediately after postoperative CT, bilateral decompressive craniectomy was performed. (C) Postoperative day 3, minimal subdural hygroma (SDG) was seen. (D) Postoperative day 15, there is a definite increase of SDG.

TABLE 2. Logistic regression to calculate odds ratio for subdural hygroma occurrence after decompressive craniectomy in preoperative diagnosis

	Crude OR (95% CI)	Adjusted OR* (95% CI)	Adjusted OR† (95% CI)
SDH	4.02 (1.23–13.19)	4.76 (1.35–16.74)	4.99 (1.36–18.34)
SAH	4.25 (1.20–15.00)	3.82 (1.04–14.08)	4.18 (1.07–16.32)
ICH	2.05 (0.67–6.16)	1.96 (0.63–6.14)	2.07 (0.64–6.64)
IVH	1.31 (0.41–4.21)	1.36 (0.41–4.51)	1.38 (0.41–4.68)
EDH	1.05 (0.16–6.80)	1.46 (0.21–10.18)	1.62 (0.22–11.96)
Cortical hemorrhage	1.93 (0.63–5.95)	2.03 (0.60–6.88)	1.97 (0.57–6.85)

*Adjusted for age and gender, †adjusted for age, gender, midline shifting, and bleeding tendency. OR: odds ratio, CI: confidence interval, SDH: subdural hematoma, SAH: subarachnoid hemorrhage, ICH: intracerebral hemorrhage, IVH: intraventricular hemorrhage, EDH: epidural hemorrhage

TABLE 3. Logistic regression to calculate odds ratio for subdural hygroma occurrence after decompressive craniectomy in pre- and postoperative risk factors

	Crude OR (95% CI)	Adjusted OR* (95% CI)	Adjusted OR† (95% CI)
Craniectomy margin from midline	0.99 (0.93–1.06)	0.99 (0.93–1.06)	0.99 (0.93–1.06)
Bone flap size	1.01 (0.99–1.02)	1.01 (0.99–1.02)	1.01 (0.99–1.02)
Cortical opening	4.55 (1.46–14.21)	4.86 (1.43–16.51)	4.77 (1.39–16.32)
Duroplasty	2.00 (0.20–20.49)	2.07 (0.19–2.44)	2.14 (0.20–23.43)
EVD insertion	0.56 (0.17–1.86)	0.61 (0.18–2.11)	0.66 (0.18–2.41)
Basal cistern compression	0.68 (0.23–2.05)	0.59 (0.19–1.83)	0.59 (0.19–1.88)
Traumatic brain injury	4.02 (1.23–13.19)	4.74 (1.35–16.68)	4.91 (1.35–17.91)

*Adjusted for age and gender, †adjusted for age, gender, midline shifting, and bleeding tendency. EVD: external ventricular drainage, OR: odds ratio, CI: confidence interval

TABLE 4. Univariate analysis of subdural hygroma occurrence according to outcome and hospital day

	Total (n=59)	SDG (n=23)	Non-SDG (n=36)	p-value
Outcome				0.578
Good prognosis (GOS 1-3)	26 (44.1%)	10 (43.5%)	16 (44.4%)	
Poor prognosis (GOS 4-5)	33 (55.9%)	13 (56.5%)	20 (55.6%)	
Hospital day		78.3 ± 47.4	47.9 ± 41.4	0.012*

*Statistical significance based on two-sample *t*-test or χ^2 test. GOS: Glasgow Outcome Scale, SDG: subdural hygroma

tion, cerebrospinal fluid (CSF) leak, hydrocephalus (HDC), trephined syndrome, SDG, etc. may occur.²⁵⁾

Among these possible complications, SDG, which was first reported by Mayo in 1894, is defined as the accumulation of CSF in the subdural space due to rupture of the arachnoid membrane after head injury.¹⁵⁾ The incidence of SDG has been reported to vary from 4% to 15% in patients without DC and from 6% to 21% in patients who underwent DC.^{24,25)}

There are several theories for the development of SDG, including traumatic shearing stress. In electron microscopy studies by Hanyes et al.⁶⁾ and Schachenmayr and Friede¹⁹⁾, there is no dead space between the dura and arachnoid layer. The dural border cell layer is vulnerable to physical stress due to the fewer collagen fibers and grabbing cellular elements through amorphous materials, compared with periosteal and meningeal dura, which have many collagen fibers that hold cellular structure.^{7,19)} Although the subarachnoid space is protected by a desmosome, a tight junction, and a gap junction that form the trabeculae of the arachnoid barrier layer, this structure is susceptible to damage by shearing stress.^{6,19)} The damaged arachnoid membrane produces a CSF flow with a one-way valve, and this ICP gradient between the cerebral hemispheres results in SDG.¹⁸⁾

The second theory is the occurrence of SDG by iatrogenic surgical disruption. Along with DC, most of the patients underwent duroplasty, resulting in the extension of the arachnoid-dura layer. Aarabi et al.¹⁾ reported that more than 90% of SDG occurred after DC, which occurred in the craniectomy site; however, the incidence of SDG in brain injury patients without DC showed different results. Koizumi et al.¹¹⁾ reported that SDG showed a similar ratio on both sides; St John and Dila²⁰⁾ reported that 32 of the 63 cases reported were bilateral, 12 cases were on the right, and 19 cases were on the left. Considering these reports, it can be deduced that iatrogenic disruption will affect the occurrence of SDG. Moreover, there are other hypotheses involving arachnoid rupture, arachnoid flap, blood brain barrier failure, and brain atrophy.^{14,20)}

Generally, SDG occurrence peaks at 3 to 4 weeks after DC, and spontaneously decreases at 14 to 17 weeks.¹⁾ However,

in some cases, neurological symptoms are worsened due to an increase in SDG size, and surgical intervention may be necessary.⁹⁾

Additionally, SDG can be converted to chronic SDH; most SDGs exhibit xantho-chromic, containing high red blood cells and proteins,^{3,12,13,16,17,21-23)} as a result, inflammation of the subdural space, neo-membrane formation, and fragile and leaky capillaries were made.^{4,16,17)} This maturation of the SDG membrane and the fragile and leaky capillaries around the stretched parasagittal sinus are vulnerable to internal bleeding, resulting in the conversion of benign SDG to chronic SDH.^{4,12,15)} Approximately 6% to 32% of SDG changes to chronic SDH;⁴⁾ if the size increases and midline shifting progresses, surgical treatment may be required.¹⁾

For this reason, many studies have been conducted on the risk factors of SDG. Midline shifting (>5 mm), accompanied by HDC, basal cistern compression, arachnoid tearing, and SAH are among the risk factors of SDG reported in various studies.^{10,26)}

Jeon et al.¹⁰⁾ reported that midline shifting (>5 mm), SAH, delayed HDC, basal cistern compression, and arachnoid membrane tearing were risk factors for SDG after DC. However, according to a study by Yuan et al.²⁶⁾, the risk factors for each of the patients with SDG without DC, those with DC on one side, those with DC on the opposite side, and the patients with DC on both sides, were different. In the case of unilateral DC, temporal hematoma, contusion and traumatic SAH on the non-DC side were related to the incidence of SDG on the operated side. Also, frontal hematoma, frontal contusion, and SDH in the contralateral side of DC increased the risk of SDG on the operated side. And hemorrhage of basal cistern increased SDG incidence in the DC group. The results indicate that the risk factors are different for those cases in which DC is not performed, unilateral DC or bilateral DC are performed. They also argue that arachnoid tearing is a risk factor for SDG.²⁶⁾

In our study, the incidence of SDG after DC was statistically significantly associated with preoperative SDH or SAH, and patients with TBI compared with the disease group. Those patients with cortical opening in preoperative CT had a statistically significant association with the incidence of

SDG after DC. In addition, although the occurrence of SDG affects the patients' length of hospital stay, it does not have a significant effect on the prognosis of the patient.

Although SDG occurrence is not related to the prognosis of the patients who underwent DC, the complication development, such as chronic SDH, may be related. Therefore, it is necessary to further study a larger sample size for the risk factors of SDG.

This study is limited to a small number of patients in a single institution, and it is difficult to know the results in long term follow up. Moreover, there is a limitation in collecting the data retrospectively.

However, unlike other studies, we did not only investigate the risk factors of SDG in TBI patients but also investigated the risk factors for the occurrence of SDG in all patients who underwent DC due to IICP. Our study has significant implications for the overall prognosis of patients considering the length of hospital stay.

Conclusion

Preoperative SDH, SAH, cortical opening, and TBI seem to be associated with factors that increase the risk of SDG after DC for IICP management. Although the occurrence of SDG does not have a great effect on the prognosis of the patient, it is related to the increase of the patient's length of hospital stay, and in some cases, complications such as chronic SDH occur. The above mentioned risk factors in brain injury patients should be considered when performing preoperative evaluation.

■ The authors have no financial conflicts of interest.

REFERENCES

- 1) Aarabi B, Chesler D, Maulucci C, Blacklock T, Alexander M. Dynamics of subdural hygroma following decompressive craniectomy: a comparative study. *Neurosurg Focus* 26:E8, 2009
- 2) Adamo MA, Deshaies EM. Emergency decompressive craniectomy for fulminating infectious encephalitis. *J Neurosurg* 108:174-176, 2008
- 3) Da Costa DG, Adson AW. Subdural hygroma. *Arch Surg* 43:559-567, 1941
- 4) Feng JF, Jiang JY, Bao YH, Liang YM, Pan YH. Traumatic subdural effusion evolves into chronic subdural hematoma: two stages of the same inflammatory reaction? *Med Hypotheses* 70:1147-1149, 2008
- 5) Fisher CM, Ojemann RG. Bilateral decompressive craniectomy for worsening coma in acute subarachnoid hemorrhage. Observations in support of the procedure. *Surg Neurol* 41:65-74, 1994
- 6) Haines DE, Harkey HL, al-Mefty O. The "subdural" space: a new look at an outdated concept. *Neurosurgery* 32:111-120, 1993
- 7) Han CY, Backous DD. Basic principles of cerebrospinal fluid metabolism and intracranial pressure homeostasis. *Otolaryngol Clin North Am* 38:569-576, 2005
- 8) Hofmeijer J, Kappelle LJ, Algra A, Amelink GJ, van Gijn J, van der Worp HB. Surgical decompression for space-occupying cerebral infarction (the Hemicraniectomy After Middle Cerebral Artery infarction with Life-threatening Edema Trial [HAMLET]): a multicentre, open, randomised trial. *Lancet Neurol* 8:326-333, 2009
- 9) Jamieson KG, Yelland JD. Surgically treated traumatic subdural hematomas. *J Neurosurg* 37:137-149, 1972
- 10) Jeon SW, Choi JH, Jang TW, Moon SM, Hwang HS, Jeong JH. Risk factors associated with subdural hygroma after decompressive craniectomy in patients with traumatic brain injury: a comparative study. *J Korean Neurosurg Soc* 49:355-358, 2011
- 11) Koizumi H, Fukamachi A, Nukui H. Postoperative subdural fluid collections in neurosurgery. *Surg Neurol* 27:147-153, 1987
- 12) Lee KS, Bae WK, Bae HG, Yun IG. The fate of traumatic subdural hygroma in serial computed tomographic scans. *J Korean Med Sci* 15:560-568, 2000
- 13) Lee KS, Bae WK, Park YT, Yun IG. The pathogenesis and fate of traumatic subdural hygroma. *Br J Neurosurg* 8:551-558, 1994
- 14) Liu Y, Gong J, Li F, Wang H, Zhu S, Wu C. Traumatic subdural hygroma: clinical characteristics and classification. *Injury* 40:968-972, 2009
- 15) Ohno K, Suzuki R, Masaoka H, Matsushima Y, Inaba Y, Monma S. Chronic subdural haematoma preceded by persistent traumatic subdural fluid collection. *J Neurol Neurosurg Psychiatry* 50:1694-1697, 1987
- 16) Rabe EF, Flynn RE, Dodge PR. A study of subdural effusions in an infant. With particular reference to the mechanisms of their persistence. *Neurology* 12:79-92, 1962
- 17) Rabe EF, Flynn RE, Dodge PR. Subdural collections of fluid in infants and children. A study of 62 patients with special reference to factors influencing prognosis and the efficacy of various forms of therapy. *Neurology* 18:559-570, 1968
- 18) Santana-Cabrera L, Pérez-Acosta G, Rodríguez-Escot C, Lorenzo-Torrent R, Sánchez-Palacios M. Complications of post-injury decompressive craniectomy. *Int J Crit Illn Inj Sci* 2:186-188, 2012
- 19) Schachenmayr W, Friede RL. The origin of subdural neomembranes. I. Fine structure of the dura-arachnoid interface in man. *Am J Pathol* 92:53-68, 1978
- 20) St John JN, Dila C. Traumatic subdural hygroma in adults. *Neurosurgery* 9:621-626, 1981
- 21) Stone JL, Lang RG, Sugar O, Moody RA. Traumatic subdural hygroma. *Neurosurgery* 8:542-550, 1981
- 22) Weir B. Oncotic pressure of subdural fluids. *J Neurosurg* 53:512-515, 1980
- 23) Wetterling T, Demierre B, Rama B, Nekic M. Protein analysis of subdural hygroma fluid. *Acta Neurochir (Wien)* 91:79-82, 1988
- 24) Yang XF, Wen L, Li G, Zhan RY, Ma L, Liu WG. Contralateral subdural effusion secondary to decompressive craniectomy performed in patients with severe traumatic brain injury: incidence, clinical presentations, treatment and outcome. *Med Princ Pract* 18:16-20, 2009
- 25) Yang XF, Wen L, Shen F, Li G, Lou R, Liu WG, et al. Surgical complications secondary to decompressive craniectomy in patients with a head injury: a series of 108 consecutive cases. *Acta Neurochir (Wien)* 150:1241-1247, 2008
- 26) Yuan Q, Wu X, Yu J, Sun Y, Li Z, Du Z, et al. Subdural hygroma following decompressive craniectomy or non-decompressive craniectomy in patients with traumatic brain injury: Clinical features and risk factors. *Brain Inj* 29:971-980, 2015