



# Fifty years of pancreatic islet pathology in human type 1 diabetes: insights gained and progress made

Noel G. Morgan<sup>1</sup> · Sarah J. Richardson<sup>1</sup>

Received: 18 June 2018 / Accepted: 13 August 2018 / Published online: 25 September 2018  
© The Author(s) 2018

## Abstract

Type 1 diabetes is increasing in incidence in many parts of the world and it might be imagined that the pathological processes that underlie disease progression are firmly understood. However, this is not the case; rather, our collective understanding is still surprisingly rudimentary. There are various reasons for this but one of the most important is that the target organ (the pancreas) has been examined at, or soon after, diagnosis in only a small number of cases worldwide over the past half a century. This review provides a summary of some of the insights gained from these studies and highlights areas of ongoing uncertainty. In particular, it considers the process of insulinitis (a form of islet inflammation that occurs characteristically in type 1 diabetes) and discusses the factors that may influence the access of immune cells to the beta cells. Attention is also drawn to recent evidence implying that two distinct profiles of insulinitis exist, which occur differentially in people who develop type 1 diabetes at increasing ages. Emphasis is also placed on the emerging (and somewhat surprising) consensus that the extent of beta cell loss is variable among people with type 1 diabetes and that many (especially those who are older at onset) retain significant numbers of insulin-producing cells long after diagnosis. We conclude by emphasising the importance of renewed efforts to study the human pancreas at disease onset and consider how the current insights may inform the design of future strategies to slow or halt the rate of beta cell loss.

**Keywords** Beta cell · Chemokine · Cytokine · HLA class I · Insulin · Insulinitis · Islets of Langerhans · Review

## Abbreviations

|      |   |
|------|---|
| CXCL | (C-X-C motif) ligand                              |
| EADB | Exeter Archival Diabetes Biobank                  |
| MRC  | Medical Research Council                          |
| nPOD | Network for Pancreatic Organ Donors with Diabetes |
| QUOD | Quality in Organ Donation                         |

**Electronic supplementary material** The online version of this article (<https://doi.org/10.1007/s00125-018-4731-y>) contains a slideset of the figures for download, which is available to authorised users.

✉ Noel G. Morgan  
n.g.morgan@exeter.ac.uk

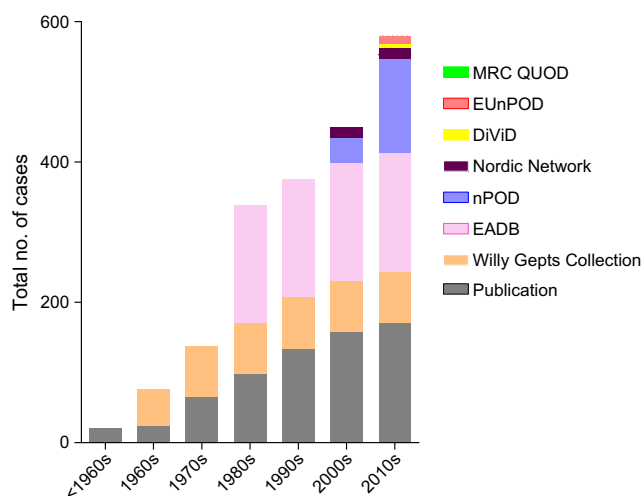
Sarah J. Richardson  
s.richardson@exeter.ac.uk

<sup>1</sup> Islet Biology Exeter (IBEx), Institute of Biomedical and Clinical Science, University of Exeter Medical School, RILD Building (Level 4), Barrack Road, Exeter EX2 5DW, UK

## Historical perspectives

The concept that type 1 diabetes represents a specific disease with a unique aetiology only gained acceptance in the mid-1970s [1] although earlier pioneering studies (mainly by Willy Gepts in the 1960s [2]) had hinted at this conclusion by revealing some of the characteristic pancreatic pathology now known to define it. Progress has remained sluggish, however; largely because a meticulous examination of the target organ is not easily achieved in living individuals. Efforts are underway to improve non-invasive imaging [3] but, in humans, the pancreas remains largely inaccessible and surgical interventions still carry a serious risk. Useful rodent models have been developed to assist in defining the aetiology of type 1 diabetes [4–6] but there are fundamental differences between the rodent and human pancreas with respect to islet architecture [7], innervation [8, 9] and vasculature [8–10], which require caution to be exercised.

Looking back over the last 50 years, it is sobering to realise that fewer than 600 human pancreatic samples in total have been studied from people with type 1 diabetes or are available in pancreatic biobanks (Fig. 1; Table 1). Moreover, only a small subset of these come from young people with recent-onset disease. The largest collections are held in the Exeter Archival Diabetes Biobank (EADB) and the Network for Pancreatic Organ Donors with Diabetes (nPOD) [11]. The EADB is an archival collection comprised of predominantly post-mortem pancreas samples collected from young people (<20 years old) with recent-onset (<2 years) disease who died between 1935 and the mid-1990s [12]. Importantly, it contains the world's largest collection of pancreas tissue from individuals diagnosed with diabetes under the age of 10 years (a comparison of the two largest collections is shown in Fig. 2; Table 2). However, most specimens were obtained post-mortem and the tissue is of variable quality such that its suitability for certain applications (e.g. RNA sequencing) is limited. By contrast, nPOD tissues are harvested and processed according to optimised standard operating procedures and samples are available for multiple applications [11, 13, 14]. Nevertheless, most nPOD pancreases come from older-onset donors with longer disease duration (Fig. 2; Table 2) and only a single organ is currently available from a donor under the age of 7 years with a short duration (<2 years) of disease. Newer initiatives, including the European INNODIA consortium and



**Fig. 1** Cumulative number of type 1 diabetes cases that have become available for study over the past 50 years. Fewer than 600 human pancreatic samples are available for study of the aetiopathology of type 1 diabetes in the various collections held across the world. Some form part of larger collections while other samples are cited only in specific publications (defined as ‘Publication’ in the key). These have been accumulated over time and the collection of samples is ongoing in the nPOD, European nPOD (EUnPOD), Nordic Network for Clinical Islet Transplantation and QUOD Biobank initiatives. Despite this, only a small subset of samples come from individuals with recent-onset ( $\leq 2$  years) disease. DiViD, Diabetes Virus Detection Study. This figure is available as part of a [downloadable slideset](#)

a Medical Research Council (MRC)-funded pancreas collection (the Quality in Organ Donation [QUOD] Biobank; coordinated from the University of Newcastle, UK) promise to deliver high-quality samples in the future. Further study of pancreas biobanks remains paramount for an improved understanding of diabetes [15].

## Islet structure and composition

In humans, islets are widely dispersed across the pancreas, although they may be present at higher density in the head and body of the organ than in the tail [16]. Each islet has a multicellular structure and, in rodent species, the beta cells are localised at the centre with the remaining endocrine cell types arranged in a peripheral ‘mantle’. In human islets, the beta and non-beta endocrine cells occur in a less structured conformation, particularly in larger islets [7, 16] (Fig. 3). Moreover, the proportions of the various endocrine cells are different between species, with a smaller overall percentage of beta cells (50–60%) in humans than in rodents [16, 17].

## Insulinitis

An important advance arising from studies of the human pancreas in type 1 diabetes has been the description of insulinitis, a process of immune cell infiltration into islets [18] (Fig. 4). This is also seen in animal models but insulinitis is found at a lower frequency across the islet population in humans than in rodents, and the proportion of the various individual immune-cell subtypes differ between species (e.g.  $CD8^+$  T cells dominate human insulinitis, whereas  $CD4^+$  cells are predominant in NOD mice). One note of caution, however, is that some evidence implies that the period spent in intensive care prior to organ recovery can influence the extent of immune-cell infiltration into the human pancreas [18].

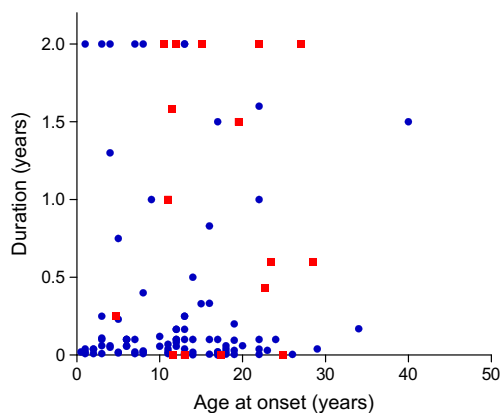
Insulinitis occurs mainly within the residual insulin-containing islets of people with recent-onset type 1 diabetes and many fewer insulin-deficient islets are inflamed [12, 19–21]. This implies that immune cells are recruited and retained primarily in response to factors emanating from their target beta cells, although the proportion of islets with inflammation varies, not simply in response to beta cell numbers, but also according to the age at disease onset. For example, among individuals diagnosed aged 13 years or older, the proportion of residual insulin-containing islets with insulinitis is around 25%, whereas it is much higher (~80%) in those diagnosed in the very early years of life (<7 years of age) [22]. These statistics suggest that young children may have a more aggressive form of the disease. A further implication is that, among older individuals, functional insulin deficiency can occur despite the retention of a significant reserve of the hormone. This

**Table 1** Principal type 1 diabetes pancreas biobanks available for study

| Biobank name; location  | Number of donors with type 1 diabetes       | Examples of other donor types within the collection  | Website link  |
|---|---|--|---|
| EADB; UK  | 169   | No diabetes<br>AAb <sup>+</sup> without diabetes,<br>Type 2 diabetes<br>Cystic fibrosis<br>Coxsackie-infected neonates   | <a href="http://foulis.vub.ac.be/">http://foulis.vub.ac.be/</a> (accessed 28 August 2018)   |
| nPOD; USA   | 135   | No diabetes<br>AAb <sup>+</sup> without diabetes<br>Type 2 diabetes<br>Cystic fibrosis related diabetes<br>Pancreatitis<br>Gestational diabetes<br>Pancreatic transplant | <a href="http://www.jdrfnpod.org/">www.jdrfnpod.org/</a> (accessed 28 August 2018)  |
| European nPOD (EUnPOD); Italy   | 11  | No diabetes  | NA  |
| Belgium Diabetes Registry, (includes the Willy Gepts Collection); Belgium | 73 (datasets for $n = 22$ available online) | No diabetes<br>AAb <sup>+</sup> without diabetes   | <a href="http://www.diabetesbiobank.org/">www.diabetesbiobank.org/</a> (accessed 28 August 2018)<br><a href="http://gepts.vub.ac.be/">http://gepts.vub.ac.be/</a> (accessed 28 August 2018) |
| Nordic Network for Clinical Islet Transplantation; Sweden                 | 15  | No diabetes<br>AAb <sup>+</sup> without diabetes<br>Type 2 diabetes  | <a href="http://nordicislets.medscinet.com">http://nordicislets.medscinet.com</a> (accessed 28 August 2018)   |
| MRC QUOD Biobank; UK  | 1   | No diabetes  | <a href="http://gtr.ukri.org/projects?ref=MR%2FR014132%2F1">http://gtr.ukri.org/projects?ref=MR%2FR014132%2F1</a> (accessed 28 August 2018)   |

Autoantibody positive, AAb<sup>+</sup>; NA, not available

points not only to beta cell loss as a cause of type 1 diabetes, but also suggests an insulin-secretory dysfunction among the residual, non-inflamed islets in some individuals. These conclusions are supported by in vitro studies showing that the immediate post-isolation deficit in glucose-induced insulin secretion in the islets of people with type 1 diabetes may improve with time in culture [23].



**Fig. 2** Comparison of pancreas samples available from donors with recent-onset ( $\leq 2$  years) type 1 diabetes in the two largest collections available for study. Most of the pancreas samples available within the EADB (blue circles) come from individuals who were under the age of 20 years at diagnosis. Many had been diagnosed with type 1 diabetes for less than 6 months at the time of recovery of the gland. By contrast, those in the nPOD collection (red squares) were mainly older at onset. This figure is available as part of a [downloadable slideset](#)

The occurrence of insulinitis is not restricted solely to the period immediately after disease onset but it can also be found in the insulin-containing islets of individuals with long-duration disease [21]. By contrast, it is less clear how long before diagnosis insulinitis occurs in people who are progressing to disease. This is much more difficult to evaluate, of course, because prediction of disease onset is still an imperfect art. Nevertheless, it has proved so hard to uncover firm evidence of insulinitis in individuals prior to disease onset that In't Veld has defined the process as an 'elusive lesion' [21, 24–26].

**Progression of insulinitis** The relative difficulty in identifying insulinitis in the human pancreas has led to the publication of an international consensus statement by which insulinitis can be defined [27]. This represents a welcome advance since varying definitions have appeared in the literature over time [11, 19, 25, 28–31]. The consensus definition notes that 'the lesion should be established in a minimum of three islets, with a threshold level of  $\geq 15$  CD45<sup>+</sup> cells/islet before the diagnosis can be made' [27, 32]. The utility of this statement has been challenged [33], but it remains an internationally accepted working definition [32].

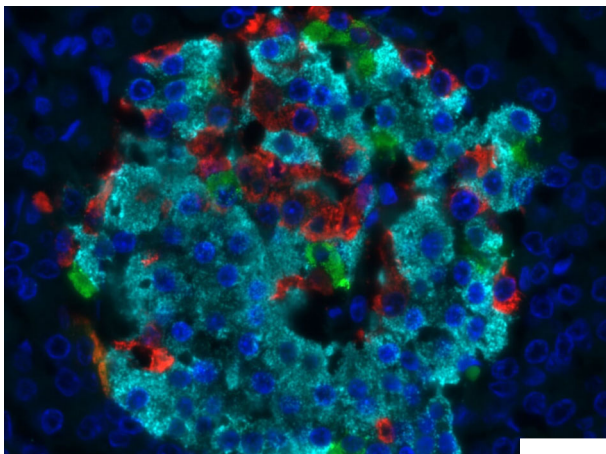
Although the precise composition of the immune infiltrate is variable between islets and among individuals, important categories of insulinitis have now been defined. In particular, in humans, CD8<sup>+</sup> T cells are predominant, whereas CD4<sup>+</sup> cells are often represented only as a minority population [19, 21, 34, 35]. In addition, the proportion of CD20<sup>+</sup> cells (B cells) is

**Table 2** Comparison of the type 1 diabetes samples available within the EADB and the nPOD pancreas collection

| Variable                            | EADB              | nPOD             |
|-------------------------------------|-------------------|------------------|
| Age at onset (years)                | 11.00 (5.0–16.0)  | 11.52 (6.2–18.4) |
| Age at onset (years), range         | 0.5–40            | 1–82             |
| Disease duration (years)            | 0.143 (0.04–3.75) | 12.00 (5.5–23.0) |
| Disease duration (years), range     | 0–19              | 0–84             |
| Donors with $\leq 1$ year duration  |                   |                  |
| <i>n</i>                            | 85                | 11               |
| Age of onset (years)                | 12.0 (6.0–17.0)   | 17.4 (11.6–23.0) |
| Donors $\leq 7$ years old at onset  |                   |                  |
| <i>n</i>                            | 49                | 48               |
| Duration (years)                    | 0.25 (0.0–6.0)    | 23.0 (10.5–34.0) |
| Donors $\leq 20$ years old at onset |                   |                  |
| <i>n</i>                            | 116               | 107              |
| Duration (years)                    | 0.17 (0.0–4.0)    | 14.0 (7.0–24.5)  |

Data presented as median (interquartile range) unless otherwise stated. Onset and duration data are available for 128 EADB cases and 133 nPOD cases

variable [34–36] since, in very young children ( $\leq 7$  years of age) these are present in relative abundance in inflamed islets, whereas their proportion is much lower in those who are older at diagnosis [34, 35]. The consequences of this difference (and the factors that underlie it) remain uncertain, but such variability must be considered when designing immunotherapeutic trials intended to reduce the rate of beta cell demise. In addition to lymphocytes, other immune-cell subtypes, including neutrophils [37], mast cells [38] and natural killer cells [39],



**Fig. 3** Cellular composition of a human islet of Langerhans from a healthy individual. Individual endocrine cell subtypes were identified by immunofluorescent analysis after staining with antisera directed against insulin (light blue), glucagon (red) and somatostatin (green). Cell nuclei were stained with DAPI (dark blue). Scale bar, 25  $\mu$ m. The image was captured in our laboratory in Exeter and is from a case held in the EADB collection. This figure is available as part of a [downloadable slideset](#)

have been reported to infiltrate the pancreas in, at least, some individuals with type 1 diabetes.

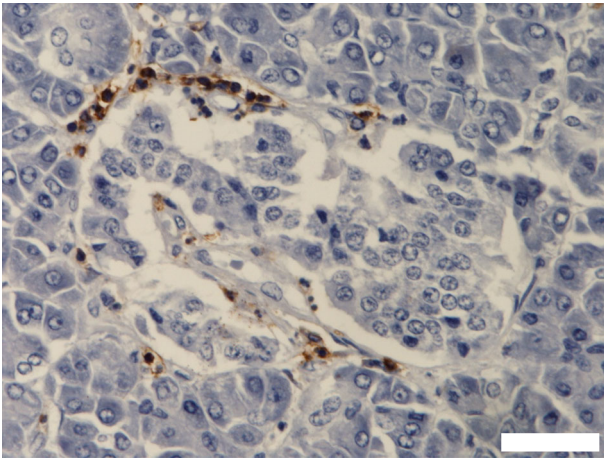
Work in the NOD mouse suggests the existence of sequential ‘stages’ of insulinitis [40]; among these is a feature known as ‘peri-insulinitis’ in which islets are surrounded by immune cells but not infiltrated by them. This is followed by more complete infiltration, where islets are invaded and the killing of beta cells occurs at high frequency. Equivalent stages are not seen in humans and invasive insulinitis is detected only rarely. This suggests either that, in humans, the killing of beta cells is mediated by the very small number of immune (presumably CD8<sup>+</sup>) cells that penetrate into the endocrine cell milieu or, alternatively, that killing does not require direct contact between immune and beta cells. A third possibility also exists, in which the immune cells play (at best) only a minor role in beta cell death. In this context, recent evidence implies that many of the CD8<sup>+</sup> cells present in insulinitic lesions are resident memory cells, which lack a proinflammatory gene expression signature [41]. Nevertheless, it is also clear that some of the influent CD8<sup>+</sup> T cells are reactive against islet antigens, suggesting an aggressive intent [42–44].

The histological feature referred to above termed ‘peri-insulinitis’ mirrors most closely the arrangement of immune cells found in many inflamed islets in human type 1 diabetes. However, unlike the situation in NOD mice, where islets are surrounded by successive banks of lymphocytes, the influent immune cells are fewer in number in human islets and tend to adorn one of the poles [27, 45] (Fig. 4). This distribution suggests that immune cells are initially attracted to the islet environment but, on arrival, they encounter a barrier to entry. This is probably the ‘peri-islet membrane’, a structure that may require considerable re-modelling in order to permit immune cell entry.

### Islet extracellular matrix

The peri-islet membrane forms part of a complex extracellular matrix that serves both to contain the islet cells and to restrict the access of influent immune cells (reviewed in [46]). The structure is sufficiently loose that soluble molecules, including islet hormones, chemokines and cytokines, can penetrate, but it is more restrictive to the passage of cells. It takes the form of a basement membrane consisting of a matrix of collagen (mainly type IV) and a multitude of associated (glyco)proteins, including perlecan and various laminins. The composition of this membrane is very similar in mouse and human islets, although there are important differences in laminin composition [46, 47]. Beneath the basement membrane is an interstitial matrix made up of other collagen isoforms (mostly types I, III and VI) plus fibronectin and large glycoproteins belonging to the fibrillin and matrilin families. Together these represent a formidable barrier to immune cells.





**Fig. 4** Example of an inflamed islet from a child newly diagnosed with type 1 diabetes. Lymphocytes were immunostained in brown with an antibody directed against CD45. Small numbers of lymphocytes are found within the core of the islet but most are located peripherally, with the majority focused at one pole of the islet. Scale bar, 20  $\mu\text{m}$ . The image was captured in our laboratory in Exeter and is from a case held in the EADB collection. This figure is available as part of a [downloadable slideset](#)

In order to gain entry to the islet milieu, the basement membrane components must be degraded and, in humans, this occurs in a targeted manner close to the point of immune attack, rather than as a more generalised disintegration of the basement membrane around the whole islet [47]. Interestingly, recent modelling of the process using mathematical simulations has suggested that permeation of the islet basement membrane may be the rate-limiting step in beta cell death in type 1 diabetes [48].

Korpos and colleagues have attempted to define the origin and identity of the enzymes responsible for mediating the breakdown of the islet basement membrane during insulinitis and, based on both inhibitor and mRNA expression studies using laser capture microdissected islets, they have proposed that cathepsins are prime candidates [47]. High-resolution analysis has led to the conclusion that macrophages and dendritic cells are the likely source of these enzymes and such cells are present in modest numbers during the autoimmune attack. Whether the accompanying lymphocytes play a direct role by also secreting additional proteases, remains to be established.

### Islet chemokine expression

A key question that arises when considering the mechanisms by which immune cells might reach the islet, is the nature of the chemoattractant. It has been widely assumed that islets are induced to secrete chemokines during the initiation phase of beta cell destruction and that relevant immune cells then migrate to the source of these molecules. In support of this, several chemokines have been detected in inflamed islets,

including, most frequently (but not exclusively [49]), the (C-X-C motif) ligand (CXCL)10 [50, 51]. This interacts with its cognate receptor, CXCR3, which has been detected on a subset of CD3<sup>+</sup> cells present in immune infiltrates, including on a proinsulin-directed, autoreactive clone isolated from an individual with type 1 diabetes [50]. It is also known that beta cells can directly produce certain cytokines, including IL-1 $\beta$  [52], which might play a role in mediating their demise.

### Islet HLA class I hyperexpression

A characteristic feature seen in the majority of insulin-containing islets in individuals with type 1 diabetes is hyperexpression of HLA class I [53, 54]. This was first described in early studies by Bottazzo's group [55] and Foulis et al [53], but has subsequently been confirmed by others [54, 56]. Importantly, HLA class I hyperexpression is not solely restricted to the beta cells in inflamed islets since it occurs in all islet endocrine cells [54], suggesting that the cells are responding to a locally produced agent that is present uniquely in type 1 diabetes. The response is also independent of the simultaneous presence of infiltrating immune cells since it occurs in islets that are inflamed and those that are not [53]. Importantly, hyperexpression of HLA class I does not persist in islets that are deficient in beta cells [45, 53, 54].

Foulis and colleagues were able to correlate HLA class I hyperexpression with the presence of IFN- $\alpha$  in islets studied in situ [57] and subsequent in vitro experiments have confirmed that exposure of isolated human islets to IFN- $\alpha$  causes HLA class I hyperexpression [58, 59]. Set against this, gene expression studies performed on laser captured, microdissected islets from pancreas biopsies recovered from living individuals soon after the diagnosis of type 1 diabetes have suggested that IFN- $\alpha$  levels are not elevated in these samples [51]. Thus, a dilemma remains.

### Beta cell loss in type 1 diabetes

By convention, it has been tacitly assumed that the demise of beta cells consequent to insulinitis is mediated by enhanced apoptosis since exposure of human islets (or clonal beta cells) to proinflammatory cytokines, in vitro, leads to apoptosis [60]. Despite this, only modest increases in beta cell apoptosis have been detected in human type 1 diabetes [28] and this may reflect the rapid clearance of apoptotic cells by resident macrophages, which are known to patrol the islet milieu [19]. However, this explanation may also obscure a more fundamental possibility that beta cell apoptosis occurs much less frequently than is supposed. This concept is gaining acceptance in type 2 diabetes, in which beta cell depletion is increasingly attributed to a process of either de- or trans-

differentiation, whereby the beta cell phenotype is lost but the cells themselves remain [61]. Levine's group have provided evidence for the emergence of larger-than-expected numbers of delta cells in human islets during long term type 1 diabetes and have proposed that these may arise by a process of beta cell trans-differentiation [62]. This idea requires further verification but implies that beta cells may not always die in large numbers, after all.

A further feature revealed in recent studies of whole pancreas organs recovered from donors with type 1 diabetes is that the depletion of the islet cells correlates with a more generalised deficit in total pancreatic mass [63]. This was first mooted in the study by Foulis and Stewart [20] and more recent examination of transplant-grade samples from within the nPOD collection has revealed an ~40% reduction in relative pancreas weight in type 1 diabetes vs age matched controls [64]. Thus, the traditional view that the pathological effects associated with type 1 diabetes are restricted solely to the endocrine compartment of the tissue may require revision and increasing evidence suggests that imbalances in immune-cell infiltration also extend more widely across the gland [37, 64].

## Conclusion

Our understanding of the aetiopathology of type 1 diabetes has advanced greatly since the pioneering studies by Gepts [2], mainly thanks to the opportunity to study additional rare and precious pancreas samples recovered from individuals with the disease. Nevertheless, the task is not complete and the more we look, the more the accepted wisdom is challenged. It is critical, therefore, that such work continues since only then will new opportunities for therapy and disease prevention emerge.

**Acknowledgements** We are grateful for the contributions of many colleagues who have helped to identify the type 1 diabetes cases held within biobanks and/or reported in the literature. In particular, we are indebted to P. In't Veld (Vrije Universiteit Brussel [VUB], Brussels); A. Foulis (GG&C Pathology Department, University of Glasgow, UK); M. Yang, M. Beery and A. Pugliese (nPOD, Miami & Gainesville, Florida, USA); J. Shaw (Institute of Cellular Medicine, University of Newcastle, UK); F. Dotta (Department of Medicine, Surgery and Neurosciences, University of Siena, Italy); and O. Skog (Department of Immunology, Genetics and Pathology, Uppsala University, Sweden). In addition, we would like to acknowledge the valuable work of other colleagues which has not been cited in this review due to space restrictions.

We are grateful for collaborative discussions with the Network for Pancreatic Organ donors with Diabetes (nPOD; RRID:SCR\_014641), a collaborative type 1 diabetes research project sponsored by JDRF (nPOD: 5-SRA-2018-557-Q-R) and The Leona M. & Harry B. Helmsley Charitable Trust (Grant no. 2018PG-T1D053). Organ procurement organisations (OPO) partnering with nPOD to provide research resources are listed at [www.jdrfnpod.org/for-partners/npod-partners/](http://www.jdrfnpod.org/for-partners/npod-partners/).

**Data availability** The datasets generated and/or analysed during the current study are available from the corresponding author on reasonable request.

**Funding** We are pleased to acknowledge financial support via a JDRF Career Development Award (5-CDA-2014-221-A-N) to SJR, an MRC Project Grant (MR/P010695/1) to SJR and NGM, and project grants from Diabetes UK (15/0005156 & 16/0005480) to NGM and SJR.

**Duality of interest** The authors declare that there is no duality of interest associated with this manuscript.

**Contribution statement** Both NGM & SJR were responsible for drafting the article and revising it critically for important intellectual content. Both authors approved the version to be published.

**Open Access** This article is distributed under the terms of the Creative Commons Attribution 4.0 International License (<http://creativecommons.org/licenses/by/4.0/>), which permits unrestricted use, distribution, and reproduction in any medium, provided you give appropriate credit to the original author(s) and the source, provide a link to the Creative Commons license, and indicate if changes were made.

## References

- Gale EA (2001) The discovery of type 1 diabetes. *Diabetes* 50:217–226
- Gepts W (1965) Pathologic anatomy of the pancreas in juvenile diabetes mellitus. *Diabetes* 14:619–633
- Yang L, Ji W, Xue Y, Chen L (2013) Imaging beta-cell mass and function in situ and in vivo. *J Mol Med* 91:929–938
- Colle E, Guttman RD, Seemayer T (1981) Spontaneous diabetes mellitus syndrome in the rat. I. Association with the major histocompatibility complex. *J Exp Med* 154:1237–1242
- Leiter EH (2001) The NOD mouse: a model for insulin-dependent diabetes mellitus. *Curr Protoc Immunol* 24:15.9.1–15.9.23
- Makino S, Kunimoto K, Muraoka Y, Mizushima Y, Katagiri K, Tochino Y (1980) Breeding of a non-obese, diabetic strain of mice. *Jikken Dobutsu* 29:1–13
- Bosco D, Armanet M, Morel P et al (2010) Unique arrangement of alpha- and beta-cells in human islets of Langerhans. *Diabetes* 59:1202–1210
- Tang SC, Baeyens L, Shen CN et al (2018) Human pancreatic neuro-insular network in health and fatty infiltration. *Diabetologia* 61:168–181
- Tang SC, Shen CN, Lin PY et al (2018) Pancreatic neuro-insular network in young mice revealed by 3D panoramic histology. *Diabetologia* 61:158–167
- Bonner-Weir S, Orci L (1982) New perspectives on the microvasculature of the islets of Langerhans in the rat. *Diabetes* 31:883–889
- Campbell-Thompson M, Wasserfall C, Kaddis J et al (2012) Network for Pancreatic Organ Donors with Diabetes (nPOD): developing a tissue biobank for type 1 diabetes. *Diabetes Metab Res Rev* 28:608–617
- Foulis AK, Liddle CN, Farquharson MA, Richmond JA, Weir RS (1986) The histopathology of the pancreas in type 1 (insulin-dependent) diabetes mellitus: a 25-year review of deaths in patients under 20 years of age in the United Kingdom. *Diabetologia* 29:267–274
- Pugliese A, Vendrame F, Reijonen H, Atkinson MA, Campbell-Thompson M, Burke GW (2014) New insight on human type 1 diabetes biology: nPOD and nPOD-transplantation. *Curr Diab Rep* 14:530
- Campbell-Thompson M (2015) What can organ donor specimens tell us about type 1 diabetes? *Pediatr Diabetes* 16:320–330
- Marchetti P, Suleiman M, Marselli L (2018) Organ donor pancreases for the study of human islet cell histology and

- pathophysiology: a precious and valuable resource. *Diabetologia* 61:770–774
16. Wang X, Misawa R, Zielinski MC et al (2013) Regional differences in islet distribution in the human pancreas—preferential beta-cell loss in the head region in patients with type 2 diabetes. *PLoS One* 8: e67454
  17. Kilimnik G, Jo J, Periwal V, Zielinski MC, Hara M (2012) Quantification of islet size and architecture. *Islets* 4:167–172
  18. In't Veld P, De Munck N, Van Belle K et al (2010) Beta-cell replication is increased in donor organs from young patients after prolonged life support. *Diabetes* 59:1702–1708
  19. Willcox A, Richardson SJ, Bone AJ, Foulis AK, Morgan NG (2009) Analysis of islet inflammation in human type 1 diabetes. *Clin Exp Immunol* 155:173–181
  20. Foulis AK, Stewart JA (1984) The pancreas in recent-onset type 1 (insulin-dependent) diabetes mellitus: insulin content of islets, insulinitis and associated changes in the exocrine acinar tissue. *Diabetologia* 26:456–461
  21. Campbell-Thompson M, Fu A, Kaddis JS et al (2015) Insulinitis and beta-cell mass in the natural history of type 1 diabetes. *Diabetes* 65: 719–731
  22. Morgan NG (2017) Bringing the human pancreas into focus: new paradigms for the understanding of type 1 diabetes. *Diabet Med* 34: 879–886
  23. Krogvold L, Skog O, Sundstrom G et al (2015) Function of isolated pancreatic islets from patients at onset of type 1 diabetes; insulin secretion can be restored after some days in a non-diabetogenic environment in vitro. Results from the DiViD study. *Diabetes* 64: 2506–2512
  24. In't Veld P (2011) Insulinitis in human type 1 diabetes: the quest for an elusive lesion. *Islets* 3:131–138
  25. In't Veld P, Lievens D, De Grijse J et al (2007) Screening for insulinitis in adult autoantibody-positive organ donors. *Diabetes* 56: 2400–2404
  26. Rodriguez-Calvo T, Suwandi JS, Amirian N et al (2015) Heterogeneity and lobularity of pancreatic pathology in type 1 diabetes during the prediabetic phase. *J Histochem Cytochem* 63: 626–636
  27. Campbell-Thompson ML, Atkinson MA, Butler AE et al (2013) The diagnosis of insulinitis in human type 1 diabetes. *Diabetologia* 56:2541–2543
  28. Butler AE, Galasso R, Meier JJ, Basu R, Rizza RA, Butler PC (2007) Modestly increased beta cell apoptosis but no increased beta cell replication in recent-onset type 1 diabetic patients who died of diabetic ketoacidosis. *Diabetologia* 50:2323–2331
  29. Coppieters KT, Wiberg A, Tracy SM, von Herrath MG (2012) Immunology in the clinic review series: focus on type 1 diabetes and viruses: the role of viruses in type 1 diabetes: a difficult dilemma. *Clin Exp Immunol* 168:5–11
  30. Gianani R, Campbell-Thompson M, Sarkar SA et al (2010) Dimorphic histopathology of long-standing childhood-onset diabetes. *Diabetologia* 53:690–698
  31. Itoh N, Hanafusa T, Miyazaki A et al (1993) Mononuclear cell infiltration and its relation to the expression of major histocompatibility complex antigens and adhesion molecules in pancreas biopsy specimens from newly diagnosed insulin-dependent diabetes mellitus patients. *J Clin Invest* 92:2313–2322
  32. Campbell-Thompson ML, Atkinson MA, Butler AE et al (2017) Re-addressing the 2013 consensus guidelines for the diagnosis of insulinitis in human type 1 diabetes: is change necessary? *Diabetologia* 60:753–755
  33. Lundberg M, Seiron P, Ingvast S, Korsgren O, Skog O (2016) Insulinitis in human diabetes: a histological evaluation of donor pancreases. *Diabetologia* 60:346–353
  34. Leete P, Willcox A, Krogvold L et al (2016) Differential insulinitic profiles determine the extent of beta-cell destruction and the age at onset of type 1 diabetes. *Diabetes* 65:1362–1369
  35. Arif S, Leete P, Nguyen V et al (2014) Blood and islet phenotypes indicate immunological heterogeneity in type 1 diabetes. *Diabetes* 63:3835–3845
  36. Morgan NG, Leete P, Foulis AK, Richardson SJ (2014) Islet inflammation in human type 1 diabetes mellitus. *IUBMB Life* 66:723–734
  37. Vecchio F, Lo Buono N, Stabilini A, et al. (2018) Abnormal neutrophil signature in the blood and pancreas of pre-symptomatic and symptomatic type 1 diabetes. *JCI Insight*. In press
  38. Martino L, Masini M, Bugliani M et al (2015) Mast cells infiltrate pancreatic islets in human type 1 diabetes. *Diabetologia* 58:2554–2562
  39. Dotta F, Censini S, van Halteren AG et al (2007) Coxsackie B4 virus infection of beta cells and natural killer cell insulinitis in recent-onset type 1 diabetic patients. *Proc Natl Acad Sci U S A* 104:5115–5120
  40. Anderson MS, Bluestone JA (2005) The NOD mouse: a model of immune dysregulation. *Annu Rev Immunol* 23:447–485
  41. Kuric E, Seiron P, Krogvold L et al (2017) Demonstration of tissue resident memory CD8 T cells in insulinitic lesions in adult patients with recent-onset type 1 diabetes. *Am J Pathol* 187:581–588
  42. Coppieters KT, Dotta F, Amirian N et al (2012) Demonstration of islet-autoreactive CD8 T cells in insulinitic lesions from recent onset and long-term type 1 diabetes patients. *J Exp Med* 209:51–60
  43. Babon JA, DeNicola ME, Blodgett DM et al (2016) Analysis of self-antigen specificity of islet-infiltrating T cells from human donors with type 1 diabetes. *Nat Med* 22:1482–1487
  44. Culina S, Lalanne AI, Afonso G et al (2018) Islet-reactive CD8<sup>+</sup> T cell frequencies in the pancreas, but not in blood, distinguish type 1 diabetic patients from healthy donors. *Sci Immunol* 3:eaa04013
  45. Richardson SJ, Morgan NG, Foulis AK (2014) Pancreatic pathology in type 1 diabetes mellitus. *Endocr Pathol* 25:80–92
  46. Bogdani M, Korpos E, Simeonovic CJ, Parish CR, Sorokin L, Wight TN (2014) Extracellular matrix components in the pathogenesis of type 1 diabetes. *Curr Diab Rep* 14:552
  47. Korpos E, Kadri N, Kappelhoff R et al (2013) The peri-islet basement membrane, a barrier to infiltrating leukocytes in type 1 diabetes in mouse and human. *Diabetes* 62:531–542
  48. Wedgwood KC, Richardson SJ, Morgan NG, Tsaneva-Atanasova K (2016) Spatiotemporal dynamics of insulinitis in human type 1 diabetes. *Front Physiol* 7:633
  49. Sarkar SA, Lee CE, Victorino F et al (2012) Expression and regulation of chemokines in murine and human type 1 diabetes. *Diabetes* 61:436–446
  50. Roep BO, Kleijwegt FS, van Halteren AG et al (2010) Islet inflammation and CXCL10 in recent-onset type 1 diabetes. *Clin Exp Immunol* 159:338–343
  51. Lundberg M, Krogvold L, Kuric E, Dahl-Jorgensen K, Skog O (2016) Expression of interferon-stimulated genes in insulinitic pancreatic islets of patients recently diagnosed with type 1 diabetes. *Diabetes* 65:3104–3110
  52. Reddy S, Krogvold L, Martin C et al (2018) Distribution of IL-1beta immunoreactive cells in pancreatic biopsies from living volunteers with new-onset type 1 diabetes: comparison with donors without diabetes and with longer duration of disease. *Diabetologia* 61:1362–1373
  53. Foulis AK, Farquharson MA, Hardman R (1987) Aberrant expression of class II major histocompatibility complex molecules by B cells and hyperexpression of class I major histocompatibility complex molecules by insulin containing islets in type 1 (insulin-dependent) diabetes mellitus. *Diabetologia* 30:333–343
  54. Richardson SJ, Rodriguez-Calvo T, Gerling IC et al (2016) Islet cell hyperexpression of HLA class I antigens: a defining feature in type 1 diabetes. *Diabetologia* 59:2448–2458

55. Pujol-Borrell R, Todd I, Doshi M, Gray D, Feldmann M, Bottazzo GF (1986) Differential expression and regulation of MHC products in the endocrine and exocrine cells of the human pancreas. *Clin Exp Immunol* 65:128–139
56. Krogvold L, Edwin B, Buanes T et al (2015) Detection of a low-grade enteroviral infection in the islets of langerhans of living patients newly diagnosed with type 1 diabetes. *Diabetes* 64:1682–1687
57. Foulis AK, Farquharson MA, Meager A (1987) Immunoreactive alpha-interferon in insulin-secreting beta cells in type 1 diabetes mellitus. *Lancet* 2:1423–1427
58. Marroqui L, Dos Santos RS, Op de Beeck A et al (2017) Interferon-alpha mediates human beta cell HLA class I overexpression, endoplasmic reticulum stress and apoptosis, three hallmarks of early human type 1 diabetes. *Diabetologia* 60:656–667
59. Coomans de Brachene A, Dos Santos RS, Marroqui L et al (2018) IFN-alpha induces a preferential long-lasting expression of MHC class I in human pancreatic beta cells. *Diabetologia* 61:636–640
60. Mandrup-Poulsen T (2003) Apoptotic signal transduction pathways in diabetes. *Biochem Pharmacol* 66:1433–1440
61. Pajvani UB, Accili D (2015) The new biology of diabetes. *Diabetologia* 58:2459–2468
62. Piran R, Lee SH, Li CR, Charbono A, Bradley LM, Levine F (2014) Pharmacological induction of pancreatic islet cell transdifferentiation: relevance to type 1 diabetes. *Cell Death Dis* 5:e1357
63. Campbell-Thompson ML, Kaddis JS, Wasserfall C et al (2016) The influence of type 1 diabetes on pancreatic weight. *Diabetologia* 59:217–221
64. Campbell-Thompson M, Rodriguez-Calvo T, Battaglia M (2015) Abnormalities of the exocrine pancreas in type 1 diabetes. *Curr Diab Rep* 15:79