

Lessons learned from the Dutch Institute for Clinical Auditing: the Dutch model for quality assurance in lung cancer treatment

Naomi Beck^{1,2}, Fieke Hoeijmakers^{1,2}, Erwin M. Wiegman³, Hans J. M. Smit⁴, Franz M. Schramel⁵, Willem H. Steup⁶, Ad F. T. M. Verhagen⁷, Wilhelmina H. Schreurs⁸, Michel W. J. M. Wouters^{1,9}

¹Scientific Bureau, Dutch Institute for Clinical Auditing, Leiden, The Netherlands; ²Department of Surgery, Leiden University Medical Center, Leiden, The Netherlands; ³Department of Radiation Oncology, Isala, Zwolle, The Netherlands; ⁴Department of Pulmonology, Rijnstate Hospital, Arnhem, The Netherlands; ⁵Department of Pulmonology, St. Antonius Hospital, Nieuwegein, The Netherlands; ⁶Department of Surgery, HAGA Hospital, Den Haag, The Netherlands; ⁷Department of Cardiothoracic Surgery, Radboud University Medical Centre, Nijmegen, The Netherlands; ⁸Department of Surgery, North-West Clinics, Alkmaar, The Netherlands; ⁹Department of Surgical oncology, Netherlands Cancer Institute/Antoni van Leeuwenhoek Hospital, Amsterdam, The Netherlands

Contributions: (I) Conception and design: N Beck, F Hoeijmakers, MW Wouters; (II) Administrative support: N Beck, F Hoeijmakers; (III) Provision of study materials or patients: All authors; (IV) Collection and assembly of data: All authors; (V) Data analysis and interpretation: All authors; (VI) Manuscript writing: All authors; (VII) Final approval of manuscript: All authors.

Correspondence to: Michel W. J. M. Wouters, MD, PhD. Head of Scientific Bureau, Dutch Institute for Clinical Auditing, Leiden, The Netherlands; Department of surgical oncology, Antoni van Leeuwenhoek Hospital (NKI/AvL), Amsterdam, Plesmanlaan 121, 1066 CX, Amsterdam, The Netherlands. Email: m.wouters@dica.nl.

Background: Quality registries play an important role in the professional quality system for cancer treatment in The Netherlands. This article provides insight into the Dutch Lung Cancer Audit (DLCA); its core principles, initiation and development, first results and what lessons can be learned from the Dutch experience.

Methods: Cornerstones of the DLCA are discussed in detail, including: audit aims; the leading role for clinicians; web-based registration and feedback; data handling; multidisciplinary evaluation of quality indicators; close collaborations with all stakeholders in healthcare and transparency of results.

Results: In 2012 the first Dutch lung cancer specific sub-registry, focusing on surgical treatment was started. Since 2016 all major treating specialisms (lung oncologists, radiation-oncologists, general- and cardiothoracic surgeons—represented in the DLCA-L, -R and -S sub-registries respectively) have joined. Over time, the number of participating hospitals and included patients has increased. In 2016, the numbers of included patients with a non-small cell lung cancer (NSCLC) were 3,502 (DLCA-L), 2,427 (DLCA-R) and 1,979 (DLCA-S). Between sub-registries mean age varied from 66 to 70 years, occurrence of Eastern Cooperative Oncology Group (ECOG) performance score 2+ varied from 3.3% to 20.8% and occurrence of clinical stage I–II from 27.6% to 81.3%. Of all patients receiving chemoradiotherapy 64.2% was delivered concurrently. Of the surgical procedures 71.2% was started with a minimally invasive technique, with a conversion rate of 18.7%. In 2016 there were 17 publicly available quality indicators—consisting of structure, process and outcome indicators—calculated from the DLCA.

Conclusions: the DLCA is a unique registry to evaluate the quality of multidisciplinary lung cancer care. It is accepted and implemented on a nationwide level, enabling participating healthcare providers to get insight in their performance, and providing other stakeholders with a transparent evaluation of this performance, all aiming for continuous healthcare improvement.

Keywords: Lung cancer; audit and feedback; performance measures; healthcare quality improvement; multidisciplinary care

Submitted Dec 01, 2017. Accepted for publication Apr 06, 2018.

doi: 10.21037/jtd.2018.04.56

View this article at: <http://dx.doi.org/10.21037/jtd.2018.04.56>

Introduction

As in the rest of the world, in The Netherlands lung cancer is the leading cause of cancer related mortality (1,2). On a population of almost 17 million inhabitants, in 2016 over 12,000 persons were diagnosed with primary lung cancer (2,3). Of these, the vast majority is non-small cell lung cancer (NSCLC).

In The Netherlands, there is a national multidisciplinary evidence-based guideline on the diagnoses and treatment of NSCLC, which is revised about every 5 years. Despite this, in 2010, a study using population-based data from the Dutch Cancer Registry showed significant regional differences and between-hospital variation in treatment patterns and outcomes for patients with NSCLC and other malignancies, though reasons for these differences could hardly be identified (4). In order to improve the quality and equality of cancer care in The Netherlands, multidisciplinary quality standards were developed, by The Dutch Federation of Oncologic Societies (5). In these standards general and cancer specific requirements for optimal cancer care are described, including organization of care, the presence of certain facilities and minimum volume standards.

At the same time, nationwide clinical audits facilitated by the Dutch Institute for Clinical Auditing (DICA) were introduced in The Netherlands. Clinical auditing is a process of systematic analysis of quality of healthcare, with the aim to improve patient outcomes. With a clinical audit system, guideline adherence, patient outcomes and other quality indicator results can be accurately studied and compared.

The first Dutch lung cancer-specific audit started in 2012 and was focussed on surgical treatment. Since then more specialties involved in lung cancer care have joined and nowadays quality of lung cancer care is evaluated multidisciplinary in the nation-wide Dutch Lung Cancer Audit (DLCA).

This article provides insight into the DLCA; its core principles, initiation and development, first results and what lessons can be learned from the successful Dutch experience.

Methods

Aim

The care for patients with lung cancer ideally takes place in a multidisciplinary setting, for both the diagnostic and

treatment process. The DLCA therefore is a collaboration of multiple disciplines involved in the treatment of lung cancer. The aim of the DLCA is to evaluate the multidisciplinary care for lung cancer patients, with the potential to improve care processes and outcomes on a national level.

Development

The development of the DLCA was facilitated by DICA and design was in accordance with the DICA blueprint (6). In 2012 the first national quality registry on lung cancer was initiated, focussing on surgical treatment: the Dutch Lung Surgery Audit (7). In The Netherlands, lung surgery is performed by cardiothoracic surgeons and by general surgeons with a specialization in lung surgery. Initially, mainly the hospitals with general surgeons participated in the audit, but from 2015 on all cardiothoracic centres joined as well. In 2014, a quality registry was launched focussing on the radiotherapeutic treatment of lung cancer: the Dutch Lung Radiotherapy Audit. As of 2016, in addition to these two registries, pulmonologists joined the audit. Therefore, from 2016 on the audit was renamed as the DLCA, with sub-registries for lung oncologists (DLCA-L), surgeons (DLCA-S) and radiation-oncologists (DLCA-R), together encompassing the whole care path of lung cancer patients in Dutch hospitals.

The DLCA was developed in close collaboration with all relevant professional associations (the Dutch Society of Physicians for Lung Diseases and Tuberculosis—NVALT, The Netherlands Association for Cardio-Thoracic Surgery—NvT, the Dutch Society for Lung Surgery—NVvL-NVvH and the Dutch Society for Radiotherapy and Oncology—NVRO).

Organisation

The organizational structure of the DLCA is visualized in *Figure 1*. Clinicians mandated by their professional association and a patient representative form a joint clinical audit board (CAB). The CAB is responsible for the development and progress of the complete audit. Overarching quality issues, interdisciplinary quality indicators and joined meetings are the responsibility of the board. In addition, the three sub-registries have their own scientific committee (SC), responsible for the content of the audit and participation of their colleagues in the institutions providing lung cancer care. In the CAB each

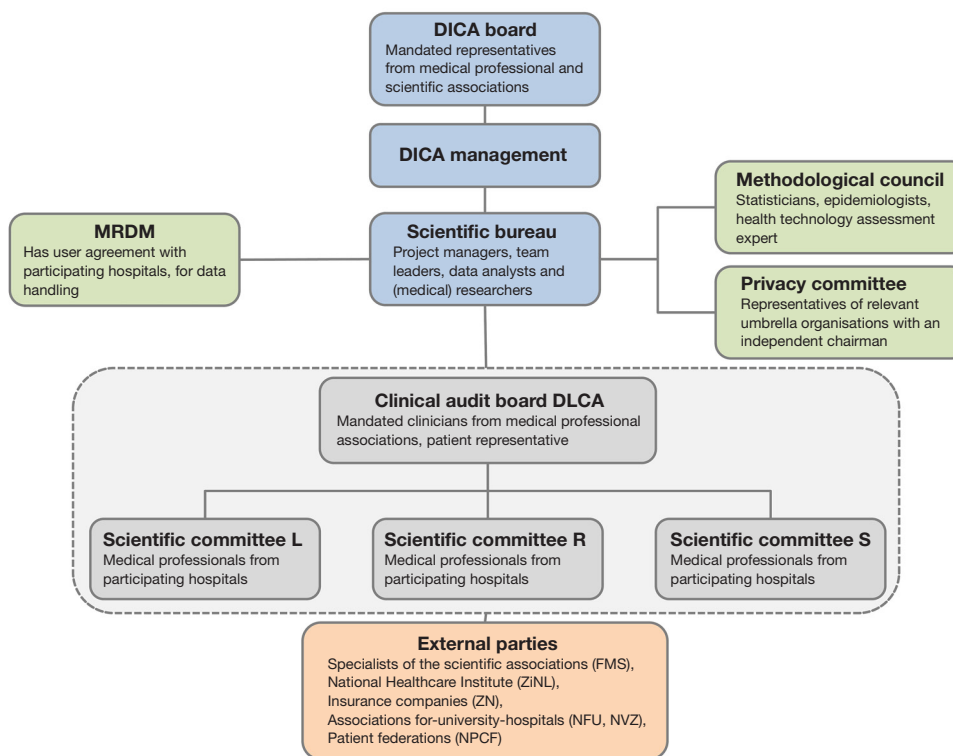


Figure 1 Organisational structure of DLCA. L, lung-oncologists; R, radiotherapeutic-oncologists; S, surgical-oncologists; MRDM, Medical Research Data Management. DICA, Dutch Institute for Clinical Auditing; DLCA, Dutch Lung Cancer Audit; FMS, Federatie Medisch Specialisten/Federation Medical Specialists; ZiNL, Zorginstituut Nederland/National Health Care Institute; ZN, Zorgverzekeraars Nederland; NFU, Nederlandse Federatie van Universitair medische centra/Netherlands Federation of University Medical Centres; NVZ, Nederlandse Vereniging van Ziekenhuizen/Dutch Hospital Association; NPCF, Patiëntenfederatie Nederland/Dutch Patient Federation.

SC is represented by its chairman. The audit is supported by the DICA scientific bureau, which in turn is backed by a methodological council and a privacy committee. The SC's have approximately three separate meetings a year in which the datasets, results and future goals are discussed. The joint results and objectives are discussed in the CAB approximately twice a year.

Funding

The development and implementation of all DLCA sub-registries were project based. These projects were funded and executed via quality improvement grants from the federation of medical specialists [Federatie Medisch Specialisten (FMS), Stichting Kwaliteitsgelden Medisch Specialisten (SKMS)]. Since 2017, the DLCA is completely financed by an umbrella organization of ten healthcare insurance companies in The Netherlands [Zorgverzekeraars Nederland (ZN)]. Apart from funding, these companies do not

influence the DLCA organisation. Costs of data registration for participating hospitals are not centrally compensated.

Inclusion

The DLCA includes all patients with primary lung cancer of any stage. In addition, in the DLCA-S there are audit possibilities for patients undergoing surgery for other mediastinal diseases, lung metastasis or benign lung diseases. In the DLCA-L, besides primary lung cancer, there is also a minimal registration of patients with malignant mesothelioma and thymomas or thymic carcinoma. In the DLCA-R only patients with stage I–III disease, treated with curative intent, are included. In the DLCA-L and -S this selection does not apply.

Dataset

The collected data is primarily based on established or future

quality indicators reflecting quality of care on a hospital level and potential casemix factors one should account for in between-hospital comparisons. The International Consortium of Health Outcome Measurement (ICHOM) standard dataset was adopted as much as possible (8).

Registered information for casemix adjustment includes baseline patient (e.g., age, gender, performance score) and tumour characteristics (e.g., disease stage and histology). The development of a suitable casemix model is subject of a separate methodology that is described elsewhere (9). Furthermore, the registry includes items regarding processes of care [e.g., modalities used in the diagnostic process, time to treatment and evaluation of the patient in a multidisciplinary team (MDT) meeting] and outcomes (e.g., short-term mortality, complications or toxicity, reinterventions and length-of-hospital-stay).

The content of the dataset is evaluated by the SC and can be adjusted on a yearly base.

Data collection and security

Data collection is preferably prospective and takes place through a secured web-based survey system or via batches of data uploaded by the hospital. Data can be supplemented or modified online when needed, for instance when follow-up information is available. An example of the web-interface of the DLCA-S data collection and feedback report is shown in *Figure 2*. Hospitals can decide themselves which method they prefer and who carries out data collection (for example: clinicians themselves or trained data-managers). For every hospital, the final responsibility for the completeness and correctness of collected data rests with a clinician. The ownership of the own data remains with the hospital. Current data dictionaries are freely available online (10).

There is a close cooperation with a data processor: Medical Research Data Management (MRDM) for data collection, encryption and safe storage. MRDM has a user agreement with all participating hospitals. A service-desk is available by telephone or e-mail during working hours for all questions.

Data quality

Assurance of data quality takes place in multiple ways. One of these is the on-site verification of registered data in the (electronic) patient records of the hospital, by an independent third party. During the data verification, the completeness of patient inclusion by hospitals is checked, as

well as the accuracy of the most important data on patient level. Verification takes place for the first time approximately 3 years after the start of the registry. Thus, a registry has to be more “mature” for this data validity check. The data verification process and results of the DLCA-S verification in 2016, as well as other methods to assure data quality are described as a separate topic by Hoeijmakers *et al.* (11).

Auditing process

Feedback information is provided through weekly updated online reports, of which an example of the DLCA-S is shown in *Figure 2*. Participating hospitals can use these reports to continuously monitor their results compared to a national benchmark. DICA provides two types of online reports: “the basic report” and “the indicator report”. The more unprocessed information on the treated population is displayed in the basic report and divided into different sections. The indicator scores are displayed in the indicator report, typically in funnel plots with 95% confidence intervals around the national average or a defined norm and adjusted for casemix factors when relevant.

Quality indicators and transparency

To reflect quality of care on a hospital level, quality indicators were developed. Quality indicators primarily serve as information for healthcare providers (internal use). Clinicians thus play a leading role in the development and determination of the DLCA indicator sets.

Since quality information is also of interest for other parties in the Dutch healthcare system (e.g., insurance companies, patient federations, government), a part of the set is agreed to be of use as transparent information (external use or “transparency”). Indicators are tested on relevance, validity, reliability and feasibility (12). The decision whether an indicator is suitable for external use is made tripartite with mandated representatives from the SC and the external parties in *Figure 1*. In accordance with the Donabedian concept, indicator sets consist of structure, process and outcome indicators (13). Twice a year the content of indicator sets for public transparency is discussed between all relevant parties in a meeting facilitated by DICA’s scientific bureau.

Public transparency of hospital specific indicator scores follows a stepwise model: participation and structure indicators are released in the first year of the audit, process indicators in the second and outcome indicators in the third.

A (1) Data entry in web-based survey system

a. Login and overview

- Select audit
- Patient overview
- Add new patient
- Reports
- Sign out

b. Registration sections

- Patient information
- Operation
- Resection lung cancer
- Medical history
- Preoperative functions
- Diagnostics
- Resection
- Postoperative course
- Histopathology
- Survival status (30-day)

Date of surgery: -- -- --

Approach:

- VATS
- VATS, converted
- RATS
- RATS, converted
- Primary sternotomy

Procedure of largest resection:

- Pneumonectomy
- Bilobectomy
- Lobectomy
- Anatomical segment
- Wedge
- No resection

Next section

B (2) Online feedback report

Basic Report

Year: 2016
Registration: DLCA-S
Report: Patient characteristics

Lung carcinoma

	Own hospital	The Netherlands
ASA score	N %	%
ASA I - II	30 76,9%	63,7%
ASA III+	9 23,1%	35,8%
Unknown	0 0,0%	0,5%

Indicator Report

	N*	D**	%	% NL
13. Indicator title	45	47	95,7%	94,6%

*N = Numerator
**D = Denominator

C (3) Authorization for external transparency

Transparency portal

Send to	Indicator						
	1	2	3	4	5	6	7
External parties:	<input checked="" type="checkbox"/>	<input checked="" type="checkbox"/>	<input checked="" type="checkbox"/>	<input checked="" type="checkbox"/>	<input checked="" type="checkbox"/>	<input checked="" type="checkbox"/>	<input checked="" type="checkbox"/>
Scientific association	<input checked="" type="checkbox"/>	<input checked="" type="checkbox"/>	<input checked="" type="checkbox"/>	<input checked="" type="checkbox"/>	<input checked="" type="checkbox"/>	<input checked="" type="checkbox"/>	<input checked="" type="checkbox"/>
Insurance company	<input checked="" type="checkbox"/>	<input checked="" type="checkbox"/>	<input checked="" type="checkbox"/>	<input checked="" type="checkbox"/>	<input type="checkbox"/>	<input type="checkbox"/>	<input type="checkbox"/>
Association of hospitals	<input checked="" type="checkbox"/>	<input checked="" type="checkbox"/>	<input checked="" type="checkbox"/>	<input checked="" type="checkbox"/>	<input type="checkbox"/>	<input type="checkbox"/>	<input type="checkbox"/>
Patient association	<input checked="" type="checkbox"/>	<input checked="" type="checkbox"/>	<input checked="" type="checkbox"/>	<input checked="" type="checkbox"/>	<input checked="" type="checkbox"/>	<input checked="" type="checkbox"/>	<input checked="" type="checkbox"/>

Figure 2 Illustration: “What does the doctor see?”. Example of the web-interface of the DLCA data collection (A), feedback reports (B) and authorization portal for external transparency (C).

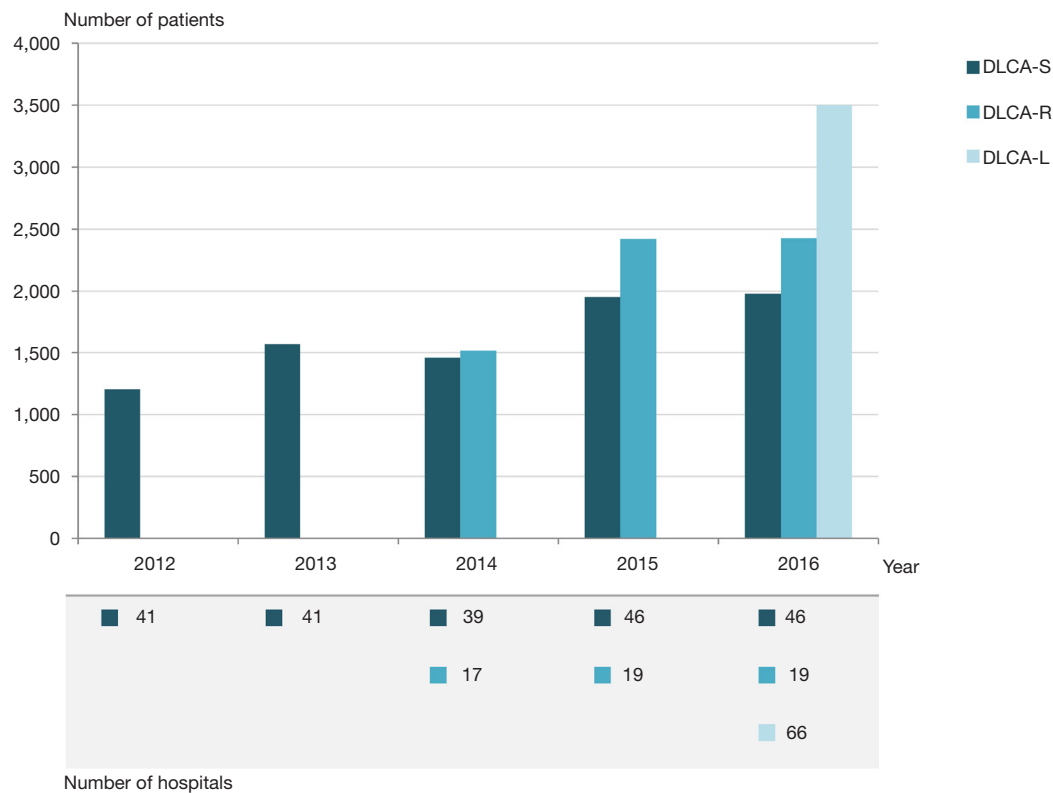


Figure 3 Evolution of the DLCA. Number of participating hospitals and number of registered patients with NSCLC per sub-registry. L, lung-oncologists; R, radiotherapeutic-oncologists; S, surgical-oncologists; DLCA, Dutch Lung Cancer Audit; NSCLC, non-small cell lung cancer.

External indicator scores are calculated after a “database-lock” three months after expiry of the registration year. Hospitals are obliged to provide external parties with their external indicator scores. Hospital boards are facilitated to share this information with different stakeholders after the annual database lock through a web-based authorization portal facilitated by DICA, shown in *Figure 2*.

Statistical analysis

Information of all patients registered in the DLCA for primary lung cancer between 1 January 2012 and 31 December 2016 (DLCA-R: 2014–2016, DLCA-L: 2016) was used for analysis. A minimum number of items per patient was required in order to consider a patient eligible for analysis. Descriptive statistics were used to assess patient, tumour and treatment characteristics for all analysable patients with a NSCLC registered in the DLCA-L, -R or -S in 2016.

Statistical analyses were performed using SPSS (IBM SPSS Statistics for Macintosh, Version 23.0).

Results

Growing participation in the DLCA

Figure 3 displays the development of the DLCA from 2012 on. The number of participating hospitals and included patients with a NSCLC increased over time. The participation of all cardiothoracic centres in the DLCA-S from 2015 on is also clearly visible in this figure.

With the more multidisciplinary character of the audit, the number of cooperating specialists in the DLCA CAB and SCs rose to 55 (representing five medical professional associations) and one patient representative.

Patient characteristics

In 2016, the total numbers of registered patients in

Table 1 Patient and tumour characteristics of patients a NSCLC in the DLCA-L, -R and -S in 2016

Variables	DLCA-L (N=3,502)	DLCA-R (N=2,427)	DLCA-S (N=1,979)
Age in years, mean \pm SD [median]	68.9 \pm 10.1 [70.0]	70.0 \pm 9.5 [70.0]	66.4 \pm 8.8 [67.0]
Age (years), N (%)			
<60	604 (17.2)	355 (14.6)	436 (22.0)
60–74	1,819 (51.9)	1,240 (51.1)	1,177 (59.5)
75+	1,079 (30.8)	832 (34.3)	366 (18.5)
Gender, N (%)			
Male	1,998 (57.1)	1,392 (57.4)	1,079 (54.5)
Female	1,504 (42.9)	1,035 (42.6)	900 (45.5)
Performance score ^a , N (%)			
ECOG 0–1	2,378 (67.9)	1,494 (61.6)	1,604 (81.1)
ECOG 2+	729 (20.8)	423 (17.4)	66 (3.3)
Unknown	395 (11.3)	510 (21.0)	309 (15.6)
ASA ^b , N (%)			
I–II	NA	NA	1,187 (60.0)
III+	NA	NA	603 (30.5)
Unknown	NA	NA	189 (9.6)
Lung function, N (%)			
FEV1 ^c and DLCO ^d \geq 80%*	454 (13.0)	228 (9.4)	550 (27.8)
FEV1 ^c or DLCO ^d <80%	1,659 (47.4)	1,184 (48.8)	1,223 (61.8)
FEV1 ^c and DLCO ^d unknown	1,389 (39.7)	1,015 (41.8)	206 (10.4)
Clinical stage ^e , N (%)			
Stage I	689 (19.7)	1,265 (52.1)	1,050 (53.1)
Stage II	278 (7.9)	223 (9.2)	558 (28.2)
Stage III	588 (16.8)	701 (28.9)	263 (13.3)
Stage IV	1,239 (35.4)	NA	20 (1.0)
Unknown	708 (20.2)	238 (9.8)	88 (4.4)

^a, performance score according to WHO or ECOG; ^b, American Society of Anaesthesiologists score; ^c, forced expiratory volume in 1 second (FEV1), percentage of expected; ^d, diffuse lung capacity for oxygen (DLCO), percentage of expected; ^e, TNM7 staging; *, FEV1 and DLCO \geq 80% or one of the values missing. L, lung-oncologists; R, radiotherapeutic-oncologists; S, surgical-oncologists; DLCA, Dutch Lung Cancer Audit; NSCLC, non-small cell lung cancer; NA, not applicable.

DLCA-L, -R and -S were respectively 4,544, 2,883 and 2,391. For the DLCA-L 4,192 patients (92.3%) were considered eligible for analysis. For the DLCA-R and -S the number of analysable patients were 2,767 (96.0%) and 2,349 (98.2%) respectively.

Of these analysable patients, in DLCA-L 3,502 (83.5%)

were diagnosed with NSCLC. In the DLCA-R 2,427 (87.7%) and in the DLCA-S 1,979 (84.2%) NSCLC patients were included.

Patient and tumour characteristics of all patients with a NSCLC included in the DLCA in 2016 are shown in *Table 1*, stratified per DLCA sub-registry. As expected, there

Table 2 Diagnostic and treatment characteristics of patients with a NSCLC in the DLCA-L in 2016 (N=3,502)

Variables	N	%
Diagnostic		
Pathologic proven disease		
No	573	16.4
Unknown	62	1.8
Yes, with:	2,867	81.9
Histology	1,566	54.6
Cytology	899	31.4
Unknown	402	14.0
Invasive diagnostics [^]		
Transthoracic puncture [^]	948	27.1
EUS and/or EBUS [^]	985	28.1
Mediastinoscopy [^]	228	6.5
Molecular diagnostics		
No/unknown	2,129	60.8
Yes	1,373	39.2
Which successful	1,310	95.4
Treatment		
Treatment goal		
Curative	1,449	41.4
Palliative with active anti-tumour treatment	901	25.7
Palliative without active anti-tumour treatment	886	25.3
Unknown	266	7.6
Initial treatment plan (n=2,350)		
Surgery (combined with other therapy)	615	26.2
Radiotherapy (combined with other non-surgical therapy)	933	39.7
Systematic treatment* only	618	26.3
Different	145	6.2
Unknown	39	1.7

[^], in case of the invasive diagnostic techniques, only the "yes" option is shown, therefore, the total does not add up to 100%; *, includes: chemotherapy, immunotherapy, targeted therapy. EUS, endoesophageal ultrasound; EBUS, endobronchial ultrasound; DLCA, Dutch Lung Cancer Audit; L, lung-oncologists.

are differences in these characteristics between the sub-registries, with the surgically treated patients being younger, with better performance score and more frequently having a clinically stage I–II NSCLC.

Diagnostic characteristics

Of all analysable patients with NSCLC registered in the DLCA-L in 2016 (n=3,502), 2,867 (81.9%) had pathologically proven disease. Of these the majority was proven histologically (1,566, 54.6%) (Table 2). Of all analysable patients with a NSCLC registered in the DLCA-R (n=2,427), 1,230 (50.7%) had pathologically proven disease, 703 (29.0%) did not and in 494 (20.4%) it was not recorded in the database (data not shown).

The most used invasive diagnostic, according to the DLCA-L, was endoscopic ultrasound, with 985 of 3,502 (28.1%) undergoing an endoesophageal ultrasound (EUS) and/or endobronchial ultrasound (EBUS) in the diagnostic work-up of a NSCLC (Table 2).

Treatment characteristics

Treatment plan (DLCA-L)

Of all analysable patients with NSCLC registered in the DLCA-L in 2016 (n=3,502), the primary treatment goal was curative in 1,449 patients (41.4%) and palliative in 1,787 patients (51.0%). In 266 patients (7.6%) information on the treatment plan is missing.

An active anti-tumour treatment (n=2,350) comprised of combinations of surgery, radiotherapy, chemotherapy, immunotherapy and targeted therapy. Surgery, whether or not combined with another treatment, was planned for 615 patients (26.2%). Radiotherapy, whether or not combined with another non-surgical treatment, was applied in 933 patients (39.7%). And another 618 patients (26.3%) were planned for systemic therapy only (Table 2).

Radiotherapy (DLCA-R)

Of all analysable patients with a (stage I–III) NSCLC undergoing radiotherapeutic treatment and registered in the DLCA-R (n=2,427), most were treated with Stereotactic Body Radiation Therapy (SBRT, n=1,294, 53.3%). Other patients were treated with conventional radiotherapy (296, 12.2%) or chemoradiotherapy (837, 34.5%), of which 64.2% was delivered concurrently (Table 3).

Table 3 Treatment characteristics of patients with a NSCLC in the DLCA-R in 2016 (N=2,427)

Characteristics	N	%
Type of radiotherapy		
Conventional	296	12.2
SBRT	1294	53.3
Chemoradiotherapy	837	34.5
Of which concurrent	537	64.2

SBRT, stereotactic body radiation therapy; DLCA, Dutch Lung Cancer Audit; R, radiotherapeutic-oncologists; NSCLC, non-small cell lung cancer.

Surgery (DLCA-S)

Of all analysable patients with NSCLC undergoing surgery and registered in the DLCA-S (n=1,979), 166 (8.4%) underwent a pneumonectomy, 1,618 (81.8%) a (bi)lobectomy, 55 (2.8%) an anatomic segment resection, 127 (6.4%) a subparenchymal resection and 13 (0.7%) did not undergo a resection. Most operations were started with a minimal invasive technique, video or robotic assisted resection (VATS or RATS): 1,409 (71.2%), with a conversion rate of 18.7% (n=263) (Table 4).

Quality indicators

In Table 5 all quality indicators that are part of the externally transparent indicator sets in 2016, 2017 and 2018 are demonstrated. Also shown in Table 5 are the results of national quality indicators of 2016, with for all indicators the number of patients included in the indicator calculation (“denominator”) and the percentage meeting the indicator definition (numerator divided by denominator). For the two volume indicators only the numerators are displayed.

The structure indicator “completeness of data entry...” is scored “yes” on patient level when all items required for calculating external indicators are registered and thereby gives an indication on the validity of other indicator results. In 2016, the average data completeness on patient level was 90.7% in the DLCA-S and 84.0% in the DLCA-R.

The percentage of patients with NSCLC discussed in a meeting prior to radiotherapeutic treatment was 95.1%. Of the surgically treated patients with a NSCLC, 97.1% was discussed in a postoperative MDT meeting, an increase of 15% compared to the 82.2% in 2012.

Outcome indicator results are calculated over a period of two consecutive years. The national average 30-day/in-

Table 4 Treatment characteristics of patients with a NSCLC in the DLCA-S in 2016 (N=1,979)

Characteristics	N	%
Surgical approach		
VATS/RATS	1,409	71.2
Converted to open	263	18.7
Primary thoracotomy	479	24.2
Different/unknown	91	4.6
Resection type		
Pneumonectomy	166	8.4
(Bi)lobectomy	1,618	81.8
Anatomic segment resection	55	2.8
Wedge / different	127	6.4
No resection (open-close)	13	0.7

VATS, video-assisted thoracoscopic surgery; RATS, robot-assisted thoracoscopic surgery; DLCA, Dutch Lung Cancer Audit; S, surgical-oncologists; NSCLC, non-small cell lung cancer.

hospital mortality of patients after a resection for primary lung cancer was 2.3% in 2015–2016. The national average 90-day mortality of all patients treated with combined chemoradiotherapy for a primary NSCLC was 6.4% in 2015–2016.

Discussion

In The Netherlands, clinical audits are integrated as a part of the professional quality system. This report provides insight in the DLCA, one of the first nationwide-implemented quality registries to evaluate the multidisciplinary care for patients with lung cancer worldwide. The DLCA was developed according to the blueprint of the DICA, one of the leading organizations facilitating clinical auditing in the Netherlands. Although the audit in its current format is still “immature” (with 2016 as the first registration year for lung oncologists), the core principles are clear. In this paper the first results were presented.

Several initiatives to monitor quality of (surgical) lung cancer care have been developed worldwide (14–19). The design and intents of these initiatives differ in various ways.

The DLCA distinguishes itself from other initiatives through; the central role of clinicians, weekly updated feedback information with national benchmark information,

Table 5 External indicator sets for lung carcinoma from 2016–2018 and national indicator scores in 2016

Indicator type	DLCA subset	Indicator description	Part of set in			Nationwide scores 2016**	
			2018	2017	2016	Patients in denominator (n)	Indicator score (%)
Structure							
L		Registration of at least one patient in the DLCA-L per hospital			√	NA	NA
L		Completeness of data entry [^] in DLCA-L	√			NA	NA
L		Volume of new patients registered in the DLCA-L per location	√	√		NA	NA
R		Completeness of data entry [^] in DLCA-R	√	√	√	2,214	84.0
R		Volume of patients undergoing radical radiation treatment for NSCLC per location	√	√	√	2,387	–
S		Completeness of data entry [^] in DLCA-S	√	√	√	1,979	90.7
S		Volume of anatomical parenchymal resections* for malignant or benign pathology per hospital location	√	√	√	2,359	–
Process							
L		Percentage of patients discussed in a MDT meeting prior to the start of treatment	√	√		NA	NA
L		Percentage of patients clinical stage III NSCLC and intentional curative treatment in whom cerebral imaging was performed	√	√		NA	NA
L		Percentage of patients with stage IV adenocarcinoma, not eligible for curative treatment, with molecular diagnostics	√			NA	NA
R		Percentage of patients—with radiation treatment with radical intent—discussed in a MDT meeting prior to the start of treatment			√	2,214	95.1
R		Percentage of patients—with SBRT with radical intent—with a waiting time (between day of referral and first day of radiation) of ≤21 days			√	1,162	70.7
R		Percentage of stage III NSCLC patients—with radiation treatment with radical intent—undergoing concurrent chemo-radiotherapy			√	686	55.5
S		Percentage of patients having surgery for a NSCLC discussed in a postoperative MDT meeting		√	√	1,809	97.1
S		Percentage of patients having surgery for a NSCLC in which the clinical TNM stage is known during the preoperative MDT meeting		√	√	1,790	98.3
S		Percentage of patients having surgery for a NSCLC in which the pathological TNM stage is known during the preoperative MDT meeting		√	√	1,749	99.3
S		Percentage of patients having surgery for a NSCLC with a waiting time (between the last MDT meeting and day of surgery) of ≤21 days		√	√	1,660	65.0
Outcome**							
R		Percentage of patients undergoing a combined chemoradiotherapy treatment that died within 90 days from the last radiation			√	1,696	6.4
R		Percentage of patients with a grade IV or V toxicity within 90 days from the last radiation treatment with curative intent	√	√	√	4,469	0.9

Table 5 (continued)

Table 5 (continued)

Indicator type	DLCA subset	Indicator description	Part of set in			Nationwide scores 2016**	
			2018	2017	2016	Patients in denominator (n)	Indicator score (%)
S		Percentage of patients died within 30 days after resection for primary lung carcinoma or during primary admission	√	√	√	3,573	2.3
S		Percentage of patients with a complicated course after resection for primary lung carcinoma	√	√	√	3,573	15.6
S		Percentage of patients with an irradical resection (R1 or R2) after resection for primary NSCLC			√	3,573	6.2

*, includes: pneumonectomy, (b)lobectomy or anatomical segment resection (excludes: wedge excisions); **, outcome indicators scores are calculated over a two-year period, thus for 2016: 2015–2016; ^, completeness means that all items required for calculating external indicators are registered per patient. NSCLC, non-small cell lung carcinoma; MDT, multidisciplinary team; NA, not available for 2016; DLCA, Dutch Lung Cancer Audit; L, lung-oncologists; R, radiotherapeutic-oncologists; S, surgical-oncologists; SBRT, stereotactic body radiation therapy.

participation of all major treating specialisms, a centrally financed system and close collaboration with other parties in healthcare with tripartite agreements on data transparency. Furthermore, participation in the DLCA has been incorporated in the professional quality system, thereby stimulating nationwide implementation and unbiased information, in contrast with registries with a more voluntary nature. Implementation of evidence-based guidelines and quality standards is evaluated with the audit, on a local as well as a national level.

Design and implementation of the DLCA sub-registries has been a phased process. After independent data-verification of the surgical part of the audit, the data of the DLCA-S are considered mature and the data of the DLCA-R will follow soon. The pulmonologists joined the DLCA-L only recently and the number of analysable patients with NSCLC included in this sub-registry in 2016 is limited to 35–40 percent of the national incidence (2). It is expected that case ascertainment will rapidly increase over time, especially from the moment hospitals are provided with benchmarked feedback (6,7,20,21). The great incentive for clinicians to participate in the audit is the information they receive on the quality of their performance in clinical practice with indicator results benchmarked to the national average (intrinsic motivation). In addition, The Netherlands Healthcare Inspectorate demands participation in the audit, insurance companies use the audit information for reimbursement and the National Healthcare Institute demands indicator scores from the audit for public transparency, which makes participation more or less

mandatory for hospitals (external stimulus).

In this first year of multidisciplinary collaboration in the DLCA, one of the biggest advantages experienced by all specialism was the opportunity to address overlapping issues in the combined CAB and SC meetings and the quick implementation of new knowledge into national clinical practice. This has contributed to the implementation of TNM8 in the DLCA in 2017, only a few months after publication (22), leading to a nationwide in-hospital adoption of TNM8.

Sub-registries in themselves also provided important information already. DLCA-S data showed that national use of minimally invasive techniques (VATS/RATS) is high, around 70%. Internationally this percentage varies between 22–63% (23,24). Postoperative mortality after primary lung cancer resection in the Netherlands has been as low as between 2.0% and 2.5% from the start of the DLCA-S. This is comparable to international data (23–26).

An important issue that arose from the DLCA-S is the unfavourable quality of staging compared to for example Denmark (27,28). In the DLCA-S staging accuracy was assessed comparing clinical with pathological TNM stage, regardless of whether discrepancies influenced treatment strategy. This definition differs from Danish studies, which reported inaccuracy only if this had clinical consequences. Nevertheless, the DLCA studies demonstrated there is room for improvement in preoperative staging in the Netherlands. In the diagnostic path leading to a clinical stage, pulmonologists play a major role. Hence, to improve pre-treatment staging, a multidisciplinary approach is essential.

The primary aim of clinical auditing is to improve outcomes for patients by providing meaningful, actable, benchmarked, short-cycled feedback information on daily clinical practice to the MDT in hospitals. Thereby stimulating improvement initiatives on both local and national level. Ultimately, quality assurance for the whole clinical care path of every lung cancer patient is intended. Therefore, the DLCA evolves from a procedure-based mono-disciplinary audit to a condition based multidisciplinary audit, tracking patients from diagnosis until death.

Simultaneously, a shift of focus on structural and process indicators towards outcome indicators, clinical as well as patient reported, is intended. The standard set for lung cancer of the International Consortium of Health Outcome Measurement (ICHOM) was adopted, to be able to participate in international comparisons in the near future. On the other hand, the DLCA is also a platform for clinicians to develop new meaningful quality indicators. DICA's well-respected agreement with external stakeholders on "stepwise" transparency is imperative in this context, because it gives clinicians the opportunity to evaluate the validity of an indicator and its results, before hospital specific information is made public.

Initially, the idea was to set up the DLCA as a multidisciplinary audit in which multiple disciplines distributed over various hospitals could contribute to registration of one patient. Unfortunately, the construction of such a "chain registry" has not been achieved yet. Largely, this is due to privacy legislation, causing difficulties in sharing patient data across different hospitals (29). Additionally, such a "chain registry" needs clear agreements on who registers what and how, since part of the feedback information (including externally transparent indicators) will be based on information provided by a clinician one might not know. Taking into account the aforementioned issue of low case ascertainment in the novice DLCA-L, completeness of data that should be relied on is not guaranteed. Therefore, the current design was chosen: three DLCA sub-registries (DLCA-L, -R and -S). This has the disadvantage that some information is repeatedly registered unnecessarily.

In extension to this, a general limitation of quality registries is the administrative burden associated with data collection, which frequently rests on the shoulders of clinicians themselves. Still, to evaluate the quality of all essential points in the patients' care path a substantial amount

of data is needed. In addition, proper casemix adjustments are imperative in between-hospital comparisons, for which a set of patient and disease characteristics have to be registered for each case. A meaningful registration may be an administrative burden, though on the other hand reduces the obligations to provide less-meaningful -but externally imposed- indicators to other partners in healthcare (e.g., insurance companies).

One of the solutions to reduce administrative burden is (partly) automated data extraction from existing data sources [e.g., electronic patient records (EPDs), structured reports of diagnostics, treatment or pathology]. Being part of a larger platform, like DICA, can be an advantage in this, when close cooperation is sought between the registry platform, the data processor and hospital-IT-providers.

The main challenge of the DLCA in the (near) future is the integration of three separate sub-registries, the DLCA-L, -R and -S into one "chain registry" system as described above. This integrated system facilitates registration of data by different disciplines and institutions in one patient record, thereby maximizing multidisciplinary quality evaluation possibilities and minimizing administrative burden of the registration.

In addition, there should be more focus on outcome indicators in the audit. Next to clinical outcomes, functional outcomes and quality of life are of great value for patients. Measuring such patient reported outcomes (PROMs) or patient reported experiences (PREMs) in daily practice can be challenging, especially low response rates can hamper valid comparisons between hospitals. Though, linkage of patient reported data to clinical data could provide clinicians with "new" valuable information and can facilitate (shared) personalized treatment decisions.

In conclusion, with the start of the DLCA in 2016, there is a unique nationwide audit system to evaluate the quality of multidisciplinary lung cancer care. The DLCA is accepted and implemented on a nationwide level, enabling healthcare providers insight in their performance together with a national benchmark, and providing other stakeholders with a transparent evaluation of this performance. When challenges of shared data input and access—mostly concerning privacy legislation—are solved, the accomplishment of a completely integrated audit remains a main aspiration. The possibilities of multidisciplinary quality evaluation will be maximized further, with the highest aim of continuous healthcare improvement.

Acknowledgements

The authors thank all clinicians, physician assistants, nurses and data-managers that register patients in the DLCA.

Footnote

Conflicts of Interest: The authors have no conflicts of interest to declare.

References

- World Health Organization. Cancer fact sheet [Internet]. Updated February 2017. Available online: <http://www.who.int/mediacentre/factsheets/fs297/en/>
- Integraal Kankercentrum Nederland (IKNL). Cijfers over kanker [Internet]. Available online: <https://www.cijfersoverkanker.nl>
- Statistics Netherlands. Population key figures [Internet]. Available online: <http://statline.cbs.nl/Statweb/publication/?DM=SLEN&PA=37296ENG&D1=0-2,19-21,23-27,52-55,57-68&D2=60-66&LA=EN&VW=T>
- Wouters MW, Siesling S, Jansen-Landheer ML, et al. Variation in treatment and outcome in patients with non-small cell lung cancer by region, hospital type and volume in the Netherlands. *Eur J Surg Oncol* 2010;36 Suppl 1:S83-92.
- SONCOS (Stichting Oncologische Samenwerking). Standardization report 5. 2017. Available online: <https://www.soncos.org>
- Van Leersum NJ, Snijders HS, Henneman D, et al. The dutch surgical colorectal audit. *Eur J Surg Oncol* 2013;39:1063-70.
- ten Berge M, Beck N, Heineman DJ, et al. Dutch Lung Surgery Audit: A National Audit Comprising Lung and Thoracic Surgery Patients. *Ann Thorac Surg* 2018;106:390-7.
- Mak KS, Van Bommel ACM, Stowell C, et al. Defining a standard set of patient-centred outcomes for lung cancer. *Eur Respir J* 2016;48:852-60.
- Beck N, Hoeijmakers F, van der Willik EM, et al. National comparison of hospital performances in lung cancer surgery: the role of casemix adjustment. *Ann Thorac Surg* 2018;106:412-20.
- DICA/MRDM. Data dictionaries of DICA facilitated audits [Internet]. Available online: <https://www.mrdm.nl/showcase/downloaden>
- Hoeijmakers F, Beck N, Prins HA, et al. How to improve the reliability/quality of data? *J Thorac Dis* 2018. [In press]
- Mainz J. Defining and classifying clinical indicators for quality improvement. *Int J Qual Health Care* 2003;15:523-30.
- Donabedian A. The quality of care. How can it be assessed? *JAMA* 1988;260:1743-8.
- Society of Thoracic Surgeons. STS national database [Internet]. Available online: <http://www.sts.org/national-database>
- European Society of Thoracic Surgeons. ESTS international database [Internet]. Available online: <http://www.ests.org>
- Nationella Kvalitetsregister. Swedish National Quality Registry for Lung Cancer [Internet]. Available online: <http://kvalitetsregister.se/englishpages/findaregistry/registerarkivenglish/nationalqualityregistryforlungcancer.2280.html>
- Falcoz PE, Conti M, Brouchet L, et al. The Thoracic Surgery Scoring System (Thoracoscore): Risk model for in-hospital death in 15,183 patients requiring thoracic surgery. *J Thorac Cardiovasc Surg* 2007;133:325-32.
- Jakobsen E, Palshof T, Østerlind K, et al. Data from a national lung cancer registry contributes to improve outcome and quality of surgery: Danish results. *Eur J Cardiothorac Surg* 2009;35:348-52; discussion 352.
- Rich AL, Tata LJ, Stanley RA, et al. Lung cancer in England: Information from the National Lung Cancer Audit (LUCADA). *Lung Cancer* 2011;72:16-22.
- Busweiler LA, Wijnhoven BP, van Berge Henegouwen MI, et al. Early outcomes from the Dutch Upper Gastrointestinal Cancer Audit. *Br J Surg* 2016;103:1855-63.
- van Bommel AC, Spronk PE, Vrancken Peeters MT, et al. Clinical auditing as an instrument for quality improvement in breast cancer care in the Netherlands: The national NABON Breast Cancer Audit. *J Surg Oncol* 2017;115:243-9.
- Goldstraw P, Chansky K, Crowley J, et al. The IASLC lung cancer staging project: Proposals for revision of the TNM stage groupings in the forthcoming (eighth) edition of the TNM Classification for lung cancer. *J Thorac Oncol* 2016;11:39-51.
- Seder CW, Salati M, Kozower BD, et al. Variation in Pulmonary Resection Practices between the Society of Thoracic Surgeons and the European Society of Thoracic Surgeons General Thoracic Surgery Databases. *Ann Thorac Surg* 2016;101:2077-84.
- Green A, Hauge J, Iachina M, et al. The mortality after surgery in primary lung cancer: Results from the

- Danish Lung Cancer Registry. *Eur J Cardiothorac Surg* 2016;49:589-94.
25. Morgant MC, Pagès PB, Orsini B, et al. Time trends in surgery for lung cancer in France from 2005 to 2012: A nationwide study. *Eur Respir J* 2015;46:1131-9.
 26. Powell HA, Tata LJ, Baldwin DR, et al. Early mortality after surgical resection for lung cancer: an analysis of the English National Lung cancer audit. *Thorax* 2013;68:826-34.
 27. Heineman DJ, ten Berge MG, Daniels JM, et al. The Quality of Staging Non-Small Cell Lung Cancer in the Netherlands: Data From the Dutch Lung Surgery Audit. *Ann Thorac Surg* 2016;102:1622-9.
 28. Jakobsen E, Green A, Oesterlind K, et al. Nationwide quality improvement in lung cancer care: The role of the Danish Lung Cancer Group and Registry. *J Thorac Oncol* 2013;8:1238-47.
 29. Dutch Senate. Voting - Change of the Law on use of civil service number in healthcare, in relation to electronic information exchange in healthcare (31466). 2011:4-6. Available online: http://www.eerstekamer.nl/behandeling/20110405/stemming_wetsvoorstel_verworpen_en/f=/viozdip1gx6j.pdf

Cite this article as: Beck N, Hoeijmakers F, Wiegman EM, Smit HJ, Schramel FM, Steup WH, Verhagen AF, Schreurs WH, Wouters MW. Lessons learned from the Dutch Institute for Clinical Auditing: the Dutch model for quality assurance in lung cancer treatment. *J Thorac Dis* 2018;10(Suppl 29):S3472-S3485. doi: 10.21037/jtd.2018.04.56