



Published in final edited form as:

Science. 2018 May 11; 360(6389): 664–669. doi:10.1126/science.aar1999.

Structural basis for recognition of frizzled proteins by *Clostridium difficile* toxin B

Peng Chen^{#1}, Liang Tao^{#2}, Tianyu Wang¹, Jie Zhang², Aina He^{2,5}, Kwok-ho Lam¹, Zheng Liu¹, Xi He³, Kay Perry⁴, Min Dong^{2,*}, and Rongsheng Jin^{1,*}

¹Department of Physiology and Biophysics, University of California, Irvine, California, USA

²Department of Urology, Boston Children's Hospital, Department of Microbiology and Immunobiology and Department of Surgery, Harvard Medical School, Boston, Massachusetts, USA

³F. M. Kirby Neurobiology Center, Boston Children's Hospital, Department of Neurology, Harvard Medical School, Boston, Massachusetts, USA

⁴NE-CAT and Department of Chemistry and Chemical Biology, Cornell University, Argonne National Laboratory, Argonne, Illinois USA

⁵Department of Oncology, Affiliated Sixth People's Hospital, Shanghai Jiaotong University, No. 600, Yishan Road, 200233 Shanghai, PRC

These authors contributed equally to this work.

Abstract

Clostridium difficile infection is the most common cause of antibiotic-associated diarrhea in developed countries. The major virulence factor, *C. difficile* toxin B (TcdB), targets colonic epithelia by binding to frizzled (FZD) family of Wnt receptors, but how TcdB recognizes FZDs is unclear. Here we present the crystal structure of a TcdB fragment in complex with the cysteine-rich domain of human FZD2 at 2.5 Å resolution, which reveals an endogenous FZD-bound fatty acid acting as a co-receptor for TcdB binding. This lipid occupies the binding-site for Wnt-adducted palmitoleic acid in FZDs. TcdB binding locks the lipid in place, thereby preventing Wnt from engaging FZDs and signaling. Our findings establish a central role of fatty acids in FZD-mediated TcdB pathogenesis, and suggest strategies to modulate Wnt signaling.

One Sentence Summary:

C. difficile toxin B uses a lipid co-receptor to recognize frizzled proteins to achieve cell entry and antagonize Wnt signaling.

*Correspondence to: R.J. (r.jin@uci.edu), M.D. (min.dong@childrens.harvard.edu).

Supplementary Materials
Materials and Methods
Figures S1-S11
Tables S1-S3
References (31-36)

Clostridium difficile is an opportunistic pathogen that colonizes the colon in humans when the normal gut microbiome is disrupted. The infection leads to disruption of the colonic epithelial barrier, resulting in diarrhea and pseudomembranous colitis and ~30,000 deaths annually in the US alone (1–5). The diseases associated with *C. difficile* infection (CDI) are caused by two *C. difficile* exotoxins, toxin A (TcdA) and toxin B (TcdB), which act as glucosyltransferases to inactivate small GTPases leading to actin cytoskeleton disruption and cell death (3, 6–8). Of the two toxins, TcdB alone is capable of causing the full-spectrum of diseases in humans, as TcdA⁻TcdB⁺ strains have been clinically isolated (9–12). Chondroitin sulfate proteoglycan 4 (CSPG4), poliovirus receptor-like 3 (PVRL3), and frizzled proteins (FZDs) have been recently identified as TcdB receptors (13–16), with FZDs thought to be the major receptors in the colonic epithelium (13, 17). FZDs are a family of transmembrane receptors for lipid-modified Wnt morphogens (18, 19). Binding of TcdB to FZDs, especially FZD1, 2 and 7, not only mediates toxin entry, but also inhibits Wnt signaling that regulates self-renewal of colonic stem cells and differentiation of the colonic epithelium (13, 20, 21). The mechanism by which TcdB specifically recognizes FZDs and inhibits Wnt signaling is unknown.

TcdB is a large multi-domain protein (~270 kDa) (Fig. 1A). We first screened and characterized a series of TcdB truncations and narrowed down a short TcdB fragment (residues 1285-1804), referred to as the FZD-binding domain (TcdB-FBD) (Table S1), which robustly binds to the cysteine-rich domain of FZD2 (residues 24-156, referred to as CRD2). Bio-layer interferometry (BLI) analysis confirmed that TcdB-FBD binds to CRD2 with an affinity (dissociation constant, K_D ~13 nM) similar to that of full-length TcdB (K_D ~19 nM) (fig. S1, A and F) (13). We determined the co-crystal structure of TcdB-FBD in complex with human CRD2 at 2.5 Å resolution, using TcdB-FBD produced in *E. coli* and CRD2 produced as a secreted protein from human embryonic kidney (HEK) cells (Table S2). The structure reveals one TcdB-FBD-CRD2 complex in an asymmetric unit, with a total buried interface of ~1488 Å² (Fig. 1B). CRD2 adopts the conserved CRD fold with four α helices and two β strands stabilized by five disulfide bridges. The comparison between CRD2 and FZD7-CRD (PDB: 5URV) and FZD8-CRD (PDB: 4F0A) yielded root-mean-square deviations of ~0.62 Å and ~1.13 Å, respectively (22, 23). TcdB-FBD adopts an L-shape with its vertex bound by CRD2, and the overall structure of TcdB-FBD is similar to the homologous region in TcdA (Fig. 1B, and fig. S2, A and B) (24).

A 16-Å long cylinder-like electron density was observed in a hydrophobic groove in CRD2, which is completely buried between TcdB-FBD and CRD2 (Fig. 1C). The homologous groove in CRD8 binds a palmitoleic acid (PAM) lipid modification of Wnt8, a conserved post-translational modification crucial for Wnt signaling (23, 25, 26). The PAM molecule seen in the structure of the CRD8-Wnt8 complex matches the electron density pattern in the hydrophobic pocket between TcdB-FBD and CRD2 (Fig. 1C) (23). We assume that this PAM was co-purified with CRD2 from HEK cells, although we could not unambiguously determine whether it is palmitoleic or palmitic acid.

This PAM is bound by both CRD2 and TcdB-FBD (Fig. 2A). CRD2 binds to PAM mainly through hydrophobic interactions: residues Q75, F76, M125, and F130 stabilize PAM from the side of its carboxylic group, and residues P78, L79, V82, L124 and F128 stabilize the

to determine the physiological relevance of FZDs and lipids to the toxicity of TcdB. We first validated the activity of TcdB^{GFE} using a cell-rounding assay (CR₅₀) on FZD1/2/7 KO HeLa cells, which still express a high level of CSPG4 that could mediate toxin entry (13). As shown in Fig. 3B, TcdB^{GFE} and WT TcdB displayed a similar toxicity on FZD1/2/7 KO HeLa cells, indicating that TcdB^{GFE} was properly folded. To separate the contribution of CSPG4 and FZDs to toxin cell entry, we further tested the activity of TcdB^{GFE} and WT TcdB on CSPG4 KO HeLa cells. Indeed, FZD-binding deficient TcdB^{GFE} displayed a ~190 fold reduced toxicity compared to the WT toxin, demonstrating the functional role of FZDs in mediating TcdB binding and entry into cells (Fig. 3B).

The binding site for the lipid co-receptor in FZDs also accommodates the Wnt PAM or exogenous lipids *in vitro* (22, 27). Do FZDs bind free fatty acids *in vivo* and if so what are their functions? To answer these questions, we designed mutations to selectively disrupt the core of the lipid-binding groove in CRD2 (e.g., F76A, F76D, L79D, and M125D), and expressed the corresponding full-length mouse FZD2 in CSPG4 KO HeLa cells (residue numbering is based on human FZD2 sequence). The use of CSPG4 KO HeLa cells also allows us to examine the interactions between these lipid-binding deficient FZD2 variants and TcdB. While all four FZD2 variants were expressed in cells, they lacked detectable levels of glycosylation (Fig. 3C). Surface biotinylation assays confirmed that these four variants failed to reach the cell surface (Fig. 3D). In comparison, mutating CRD2 residues in the protein-protein interface with TcdB-FBD (e.g., K127A, K127E, and Y77A) or residues at the edge of the lipid-binding groove (e.g., F128D and F130D) did not significantly alter FZD2 glycosylation and surface expression. We also confirmed that FZD2-K127A/E mediated similar levels of Wnt signaling as WT FZD2 did in cells, demonstrating that they were correctly folded (Fig. 3E, and fig. S5, A and B). These results thus suggest that binding of an endogenous free fatty acid in CRD2 is crucial for proper folding, glycosylation, and/or trafficking of FZD2, providing evidence for the existence and significance of free lipid-FZD interaction in a physiological context. Furthermore, none of these FZD2 variants mediated binding of full-length TcdB when expressed in CSPG4 KO HeLa cells (Fig. 3C), further illustrating the role of FZDs as TcdB receptors.

Besides FZD1, 2, and 7, which are high affinity receptors for TcdB (13), other FZDs likely also bind endogenous fatty acids, because the hydrophobic lipid-binding groove in CRD2 is largely conserved across all 10 members of FZDs (Fig. 2F). But subtle amino acid differences in this groove or the neighboring region may influence how tightly a fatty acid binds to a CRD. For example, recombinant CRD5 does not contain a free fatty acid, which may have dissociated during CRD5 purification, but it could bind exogenous PAM provided in solution (22). We confirmed that CRD5 by itself only weakly pulled down TcdB-FBD, but pre-incubation of CRD5 with PAM significantly increased its binding to TcdB-FBD (Fig. 4A). This “gain-of-function” for CRD5 to bind TcdB-FBD aided by the free PAM further supports the notion that a CRD-bound fatty acid is a critical co-receptor for TcdB. Our data suggest that the affinity and specificity of different FZDs towards TcdB are likely determined by a combination of their interactions with free fatty acids, as well as their specific protein-protein contacts with TcdB. For instance, residues Y77, K81, V82, A123 and K127 of CRD2 that contact TcdB are only conserved in FZD1, 2, and 7 (Fig. 2F).

Disrupting such protein-protein interactions in FZD2 (e.g., Y77A and K127A/E) greatly decreased binding by full-length TcdB when expressed in CSPG4 KO HeLa cells (Fig. 3C).

It is well established that Wnt binds to FZD-CRD via the Wnt PAM as a major driving force (18, 21, 23). The Wnt PAM occupies the same hydrophobic groove in CRD as the free lipid (Fig. 1D). We found that TcdB-FBD can bind to the Wnt-FZD complex using the Wnt PAM as a co-receptor, as TcdB-FBD engages CRD2 from the opposite side of the Wnt-binding interface without direct steric competition with Wnt (Fig. 4B). The ability to recognize Wnt-bound FZDs is perhaps particularly advantageous for TcdB to recognize certain FZDs that may have weaker affinities for free lipids. Indeed, we found that pre-incubation of Wnt3A with CRD5 enhanced binding of TcdB-FBD to CRD5 in pull-down and BLI assays, whereas the enhancement was dramatically reduced for TcdB-FBD-F1597G (Fig. 4, C and D). Similar Wnt-mediated enhancement was also observed for three other CRDs (human FZD4, FZD8, and FZD9) (fig. S6, A-C), and was further confirmed using full-length TcdB and CRD5 (fig. S6D). Thus TcdB can use the Wnt PAM, a conserved Wnt posttranslational modification, as a co-receptor to recognize a broad range of FZDs despite their sequence variations.

CRD2 and the pre-formed CRD2-Wnt3A complex were recognized equally well by TcdB-FBD or full-length TcdB (Fig. 4E and fig. S7A). This suggests that either the free lipid or the Wnt PAM supports TcdB binding to CRD2. In contrast, upon binding to TcdB-FBD or full-length TcdB, CRD2 could no longer bind Wnt3A (Fig. 4F and fig. S7B). This is likely because the Wnt PAM cannot displace the free fatty acid once it is locked in place by TcdB. This is consistent with the observation that TcdB-FBD blocked Wnt3A-induced signaling in cells, while the CRD-binding deficient TcdB-FBD variants did not (Fig. 3F, and fig. S5, C and D). Recent studies suggested that Wnt PAM may contribute to CRD dimerization, although the contribution of such FZD dimerization to activate Wnt signaling remains to be fully established (22, 27). Two different CRD dimer configurations have been reported (fig. S8A) (22, 27). Binding of TcdB, or TcdB-FBD, would prevent CRD dimerization in either configuration due to steric competitions, which may also contribute to Wnt signaling inhibition (fig. S8B).

Given our extensive *in vitro* and *ex vivo* data demonstrating the role of FZDs and the FZD-bound fatty acids as TcdB receptors, we sought to determine the physiological relevance of TcdB-lipid-FZD interactions to the toxicity of TcdB *in vivo*. Colonic tissues are the pathological relevant target tissue for TcdB. It has been shown that FZDs are major receptors in the colonic epithelium, while CSPG4 is expressed in the sub-epithelial myofibroblasts but not colonic epithelium (13). We therefore used a murine cecum injection model, which has been previously utilized to assess TcdB-induced damage to colonic tissues (28, 29). Briefly, a full length FZD-binding deficient TcdB variant, TcdB^{GFE} (Fig. 3B), the WT TcdB, or the control saline solution was injected into cecum of WT mice. Mice were allowed to recover and cecum tissues were harvested 12 h later for analysis. WT TcdB induced severe bloody fluid accumulation and vesicular congestion in the cecum, resulting in drastic swelling as expected. In contrast, TcdB^{GFE} induced much less fluid accumulation and no obvious vesicular congestion (Fig. 5A). To further examine the damage to tissues, we carried out histological analysis with paraffin embedded cecum tissue sections. These tissues

were scored based on four histological criteria, including disruption of the epithelium, hemorrhagic congestion, mucosal edema, and inflammatory cell infiltration, on a scale of 0 to 3 (normal, mild, moderate, or severe). WT TcdB induced extensive disruption of the epithelium and inflammatory cell infiltration, as well as severe hemorrhagic congestion and mucosal edema, while TcdB^{GFE} induced much less damage on all four criteria (Fig. 5B, C). We further assessed the integrity of epithelial tight junction by immunofluorescent staining for tight junction marker Claudin-3. WT TcdB induced extensive loss of Claudin-3 in the epithelium, while the overall morphology of the epithelial tight junction was not changed after treatment with TcdB^{GFE} (Fig. 5D). Taken together, these data further prove that FZDs are the major pathologically relevant receptors for TcdB in the colonic tissues.

Wnt signaling is critical for development, tissue homeostasis, stem cell biology, and many other processes, and its malfunction is implicated in diseases including a variety of human cancers and degenerative diseases (21, 30). The FZD-antagonizing mechanism exploited by TcdB turns a toxin into a potential pharmacological tool for research and therapeutic applications. The unexpected fatty acid-dependent binding of TcdB to FZDs also exposes a vulnerability of TcdB, which could be exploited to develop novel antitoxins that block toxin-receptor recognition.

Supplementary Material

Refer to Web version on PubMed Central for supplementary material.

Acknowledgments

Funding: This work was partly supported by National Institute of Health (NIH) grants R01AI091823, R01 AI125704, and R21AI123920 to R.J.; R01 NS080833 and R01 AI132387 to M.D; and R01GM057603 and R01GM126120 to X.H. M.D. and X.H. also acknowledge support by the Harvard Digestive Disease Center (NIH P30DK034854) and Boston Children's Hospital Intellectual and Developmental Disabilities Research Center (NIH P30HD18655). M.D. holds the Investigator in the Pathogenesis of Infectious Disease award from the Burroughs Wellcome Fund. X.H. is an American Cancer Society Research Professor. NE-CAT at the Advanced Photon Source (APS) is supported by a grant from the National Institute of General Medical Sciences (P41 GM103403). The Pilatus 6M detector on 24-ID-C beam line is funded by a NIH-ORIP HEI grant (S10 RR029205). Use of the APS, an Office of Science User Facility operated for the U.S. Department of Energy (DOE) Office of Science by Argonne National Laboratory, was supported by the U.S. DOE under Contract No. DE-AC02-06CH11357. **Author contributions:** M.D. and R.J. conceived the project. P.C., T.W., K.L., Z.L., and R.J. carried out the protein expression, purification, characterization, structure determination and analysis, and structure based mutagenesis. L.T., A.H., J.Z., and M.D. performed structure-based mutagenesis, all the functional characterization, and BLI binding studies. K.P. collected the X-ray diffraction data. X.H. helped with Wnt signaling assays and provided advice. P.C., L.T., M.D., and R.J. wrote the manuscript with input from other authors. **Competing interest:** All authors declare no competing interests. **Data and materials availability:** Coordinates and structure factors of the TcdB-FBD-CRD2 complex have been deposited in the Protein Data Bank under accession code 6C0B. All other data are available in the manuscript or the supplementary materials. A provisional patent application on utilizing TcdB-FBD to modulate Wnt signaling has been filed jointly by Boston Children's Hospital and University of California Irvine.

References and Notes:

1. Rupnik M, Wilcox MH, Gerding DN, Nat Rev Microbiol 7, 526–536 (2009). [PubMed: 19528959]
2. Heinlen L, Ballard JD, Am J Med Sci 340, 247–252 (2010). [PubMed: 20697257]
3. Voth DE, Ballard JD, Clin Microbiol Rev 18, 247–263 (2005). [PubMed: 15831824]
4. Hunt JJ, Ballard JD, Microbiol Mol Biol Rev 77, 567–581 (2013). [PubMed: 24296572]

5. Smits WK, Lyras D, Lacy DB, Wilcox MH, Kuijper EJ, *Nat Rev Dis Primers* 2, 16020 (2016). [PubMed: 27158839]
6. Jank T, Aktories K, *Trends Microbiol* 16, 222–229 (2008). [PubMed: 18394902]
7. Sun X, Savidge T, Feng H, *Toxins (Basel)* 2, 1848–1880 (2010). [PubMed: 22069662]
8. Pruitt RN, Lacy DB, *Front Cell Infect Microbiol* 2, 28 (2012). [PubMed: 22919620]
9. Drudy D, Fanning S, Kyne L, *Int J Infect Dis* 11, 5–10 (2007). [PubMed: 16857405]
10. Lyras D et al., *Nature* 458, 1176–1179 (2009). [PubMed: 19252482]
11. Kuehne SA et al., *Nature*, (2010).
12. Carter GP et al., *MBio* 6, e00551 (2015). [PubMed: 26037121]
13. Tao L et al., *Nature* 538, 350–355 (2016). [PubMed: 27680706]
14. Yuan P et al., *Cell Res* 25, 157–168 (2015). [PubMed: 25547119]
15. LaFrance ME et al., *Proc Natl Acad Sci U S A* 112, 7073–7078 (2015). [PubMed: 26038560]
16. Gupta P et al., *J Biol Chem* 292, 17290–17301 (2017). [PubMed: 28842504]
17. Terada N et al., *Histochem Cell Biol* 126, 483–490 (2006). [PubMed: 16625365]
18. MacDonald BT, He X, *Cold Spring Harb Perspect Biol* 4, (2012).
19. Wang Y, Chang H, Rattner A, Nathans J, *Curr Top Dev Biol* 117, 113–139 (2016). [PubMed: 26969975]
20. Gregorieff A, Clevers H, *Genes Dev* 19, 877–890 (2005). [PubMed: 15833914]
21. Nusse R, Clevers H, *Cell* 169, 985–999 (2017). [PubMed: 28575679]
22. Nile AH, Mukund S, Stanger K, Wang W, Hannoush RN, *Proc Natl Acad Sci U S A* 114, 4147–4152 (2017). [PubMed: 28377511]
23. Janda CY, Waghay D, Levin AM, Thomas C, Garcia KC, *Science* 337, 59–64 (2012). [PubMed: 22653731]
24. Chumbler NM et al., *Nat Microbiol* 1, 15002 (2016).
25. Takada R et al., *Dev Cell* 11, 791–801 (2006). [PubMed: 17141155]
26. Willert K et al., *Nature* 423, 448–452 (2003). [PubMed: 12717451]
27. DeBruine ZJ et al., *Genes Dev* 31, 916–926 (2017). [PubMed: 28546512]
28. Zhang Y et al., *Anaerobe* 48, 249–256 (2017). [PubMed: 29031928]
29. D’Auria KM et al., *Infect Immun* 81, 3814–3824 (2013). [PubMed: 23897615]
30. Steinhart Z et al., *Nature medicine* 23, 60–68 (2017).
31. Kabsch W, *Acta Crystallogr D Biol Crystallogr* 66, 125–132 (2010). [PubMed: 20124692]
32. Adams PD et al., *Acta Crystallogr D Biol Crystallogr* 66, 213–221 (2010). [PubMed: 20124702]
33. Emsley P, Lohkamp B, Scott WG, Cowtan K, *Acta Crystallogr D Biol Crystallogr* 66, 486–501 (2010). [PubMed: 20383002]
34. Brunger AT, *Nature* 355, 472–475 (1992). [PubMed: 18481394]
35. Chen VB et al., *Acta Crystallogr D Biol Crystallogr* 66, 12–21 (2010). [PubMed: 20057044]
36. Yang G et al., *BMC Microbiol* 8, 192 (2008). [PubMed: 18990232]

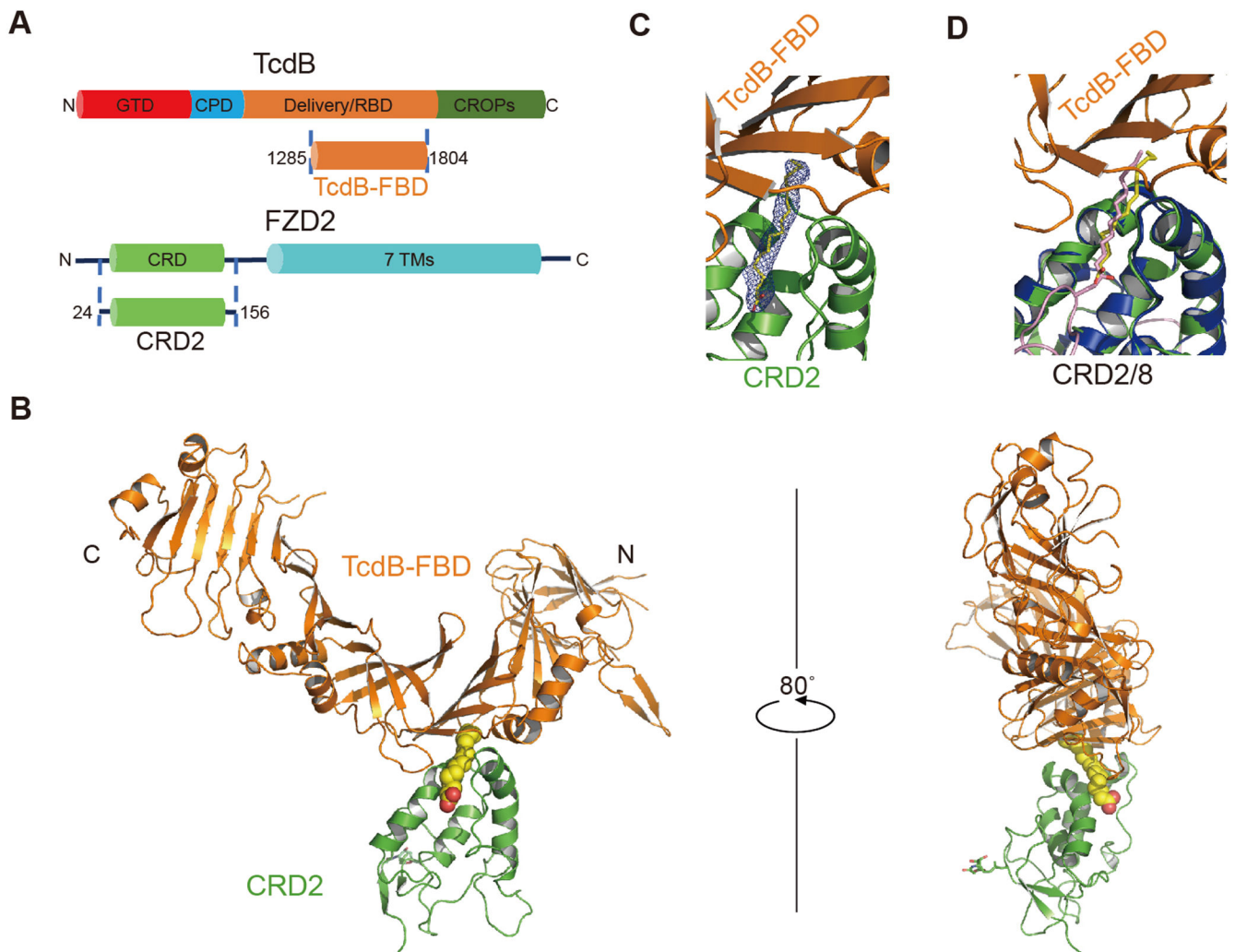


Fig. 1. Overall structure of TcdB-FBD in complex with CRD2.

(A) Schematic diagrams showing the domain structures of TcdB and FZD2, as well as the two interacting fragments used in this study. GTD: glucosyltransferase domain; CPD: cysteine protease domain; Delivery/RBD: delivery and receptor-binding domain; CROPs: combined repetitive oligopeptides domain; CRD: cysteine-rich domain; 7TMs: 7 transmembrane helices. (B) Cartoon representation of the complex with TcdB-FBD in orange, CRD2 in green, and PAM in a yellow sphere model. An N-acetyl glucosamine (NAG) due to N-linked glycosylation on CRD2-N53 is shown as sticks. (C) Electron density of the PAM bound between TcdB-FBD and CRD2. An omit electron density map contoured at 2.5σ was overlaid with the final refined model. (D) The PAM molecules bound in the TcdB-FBD-CRD2 and the Wnt8-CRD8 (Wnt8 and CRD8 are colored purple and blue, respectively) complexes are shown as yellow and purple sticks, respectively, when the two complexes are superimposed based on CRD2 and CRD8.

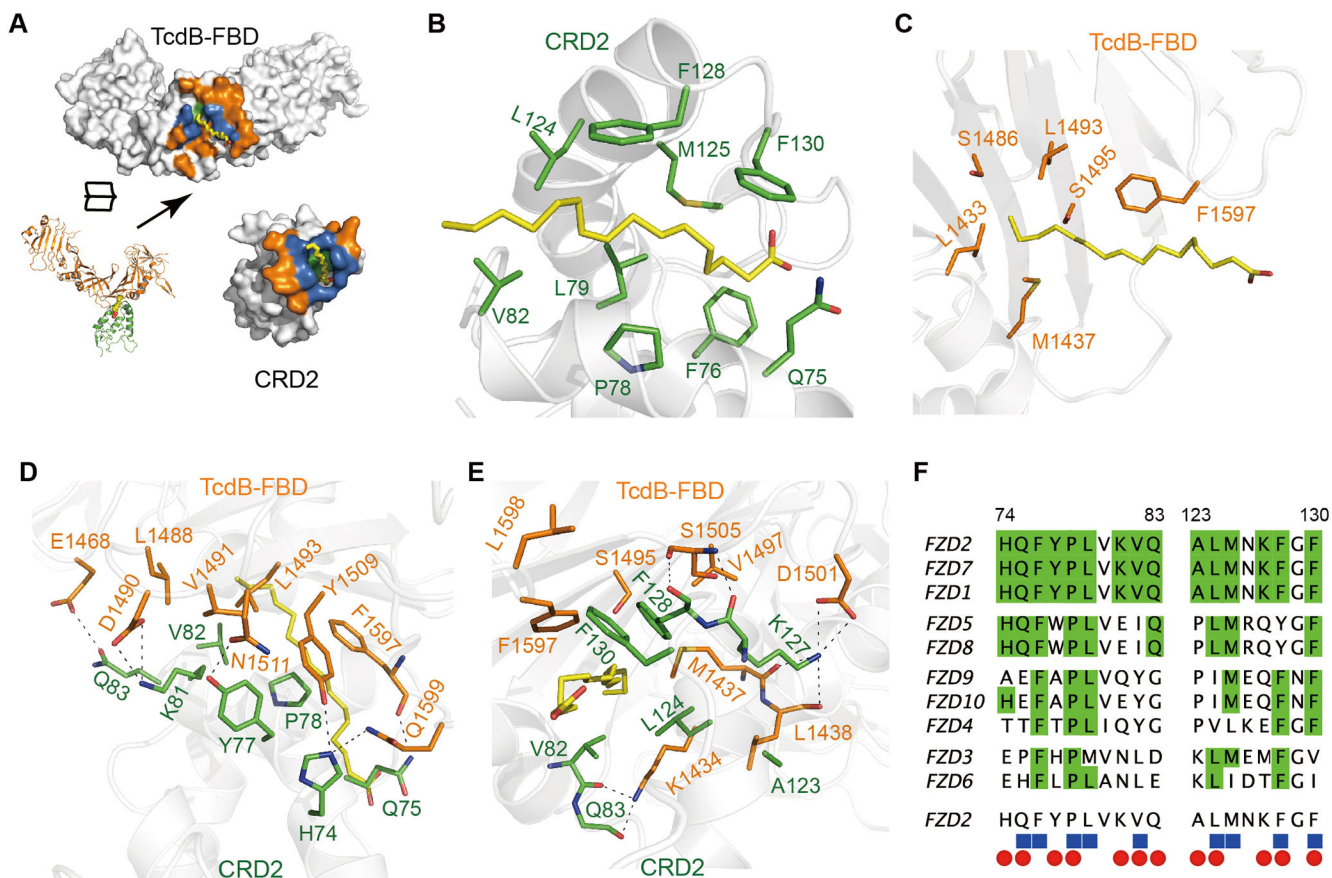


Fig. 2. TcdB-FBD recognizes CRD2 through combined fatty acid- and protein-mediated interactions.

(A) An open-book view of the TcdB-FBD-CRD2 interface. Residues that participate in protein-protein, protein-lipid, or both are colored orange, green, and blue, respectively. (B and C) A PAM molecule simultaneously interacts with CRD2 (B) and TcdB-FBD (C). Key PAM-binding residues and PAM are shown as stick models. (D and E) Two neighboring protein-mediated interfaces between TcdB-FBD and CRD2, which surround the lipid-binding groove in CRD2. (F) Amino acid sequence alignment among the ten human FZDs within the TcdB-FBD-interacting region. Invariable residues are colored green. CRD2 residues that bind to PAM and TcdB-FBD are labeled as blue cubes and red ovals, respectively.

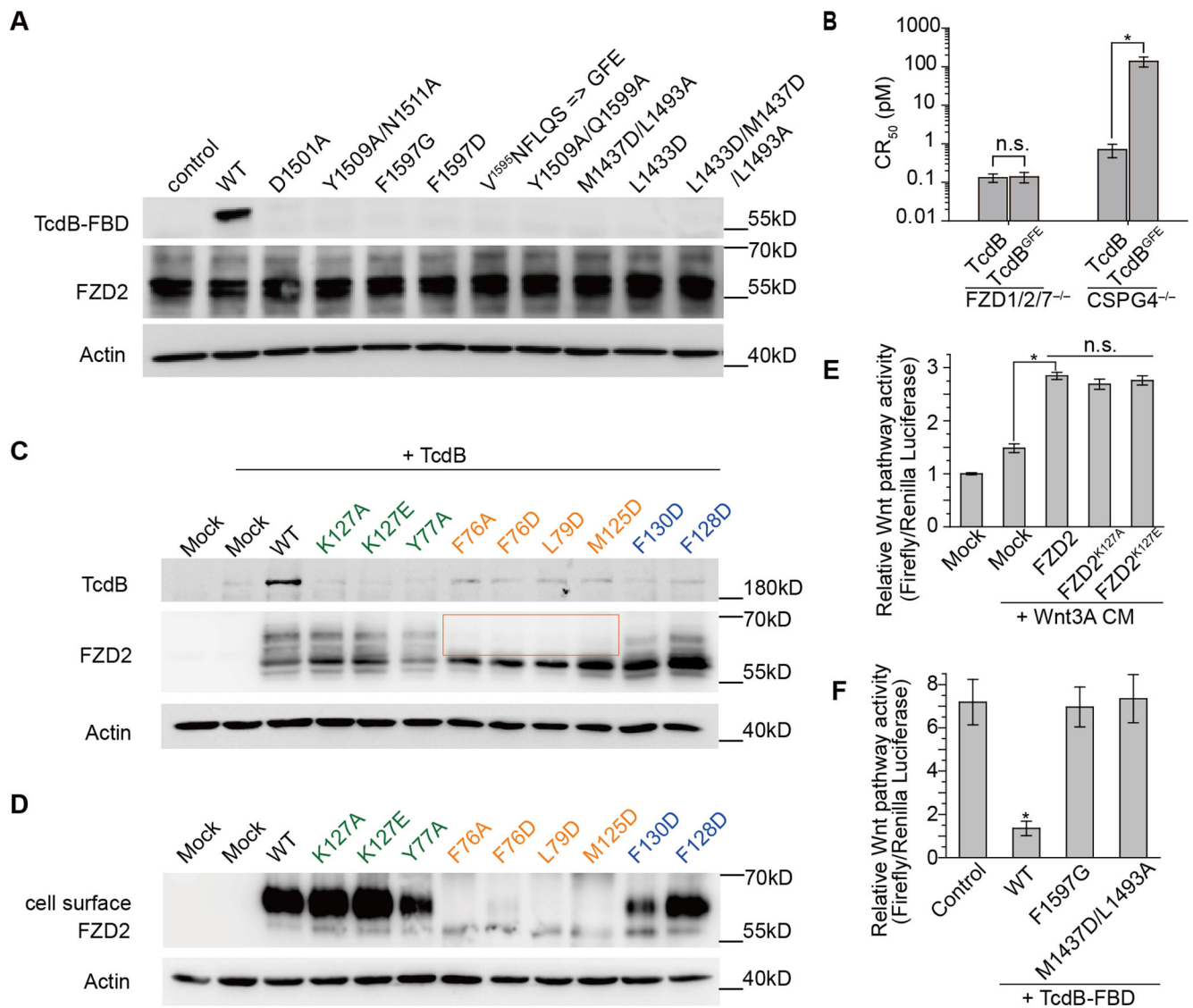


Fig. 3. Structure-based mutagenesis analyses of the interactions between TcdB and FZD2. (A) Mutations in TcdB-FBD that disrupt its interactions with PAM and/or CRD2 impaired TcdB-FBD (50 nM) binding to HeLa cells overexpressing FZD2. (B) The sensitivity of FZD1/2/7 triple KO HeLa cells and CSPG4 KO HeLa cells to full length WT TcdB and TcdB^{GFE} was determined by cell-rounding assays. CR₅₀ is defined as the toxin concentration that induces 50% of cells to become round in 24 hours. (C) When expressed in HeLa cells, WT FZD2 but not the mutated variants mediated robust binding of full-length TcdB (10 nM) on cell surfaces. Mutations in CRD2 that are located in the protein-protein interface with TcdB, in the core lipid-binding groove, or at the edge of the lipid-binding groove are marked in green, orange, and blue, respectively. Four FZD2 variants lacking detectable levels of glycosylation are highlighted in a box. (D) These four FZD2 variants failed to reach cell surfaces as examined by detecting biotinylated FZD2 on cell surfaces. (E) FZD2-K127A/E were capable of mediating Wnt signaling to a level similar to WT FZD2. (F) WT TcdB-FBD, but not the mutated variants (F1597G and M1437D/L1493A),

inhibited signaling by Wnt3A CM in HEK293T cells as measured by the TOPFLASH reporter assay. Data are mean \pm s.d., n=6, *p<0.01, Mann-Whitney Test (**B** and **F**) or Kruskal-Wallis ANOVA (**E**).

Author Manuscript

Author Manuscript

Author Manuscript

Author Manuscript

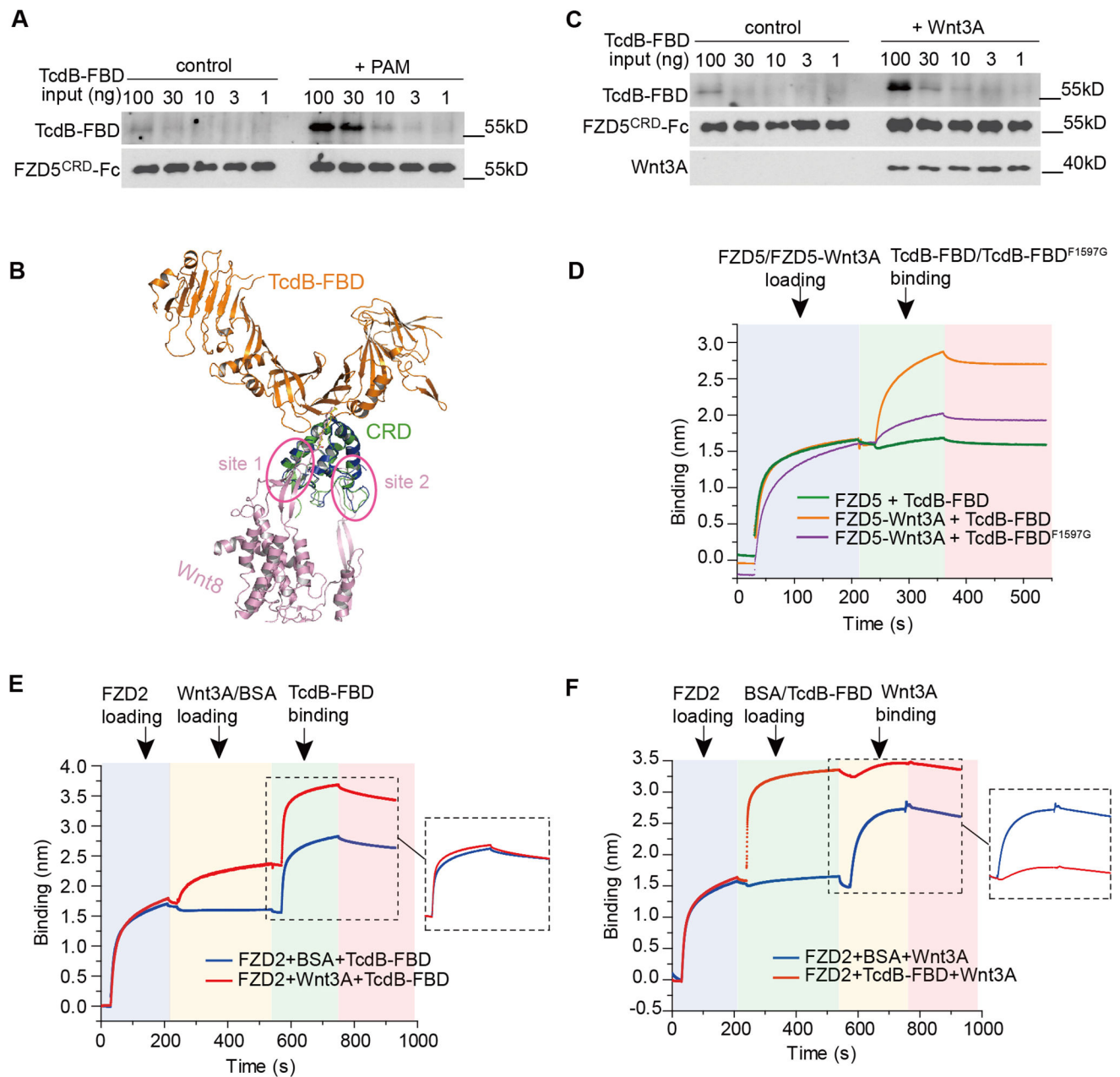


Fig. 4. A free fatty acid facilitates binding of TcdB to FZD-CRDs, which in turn prevents docking of the Wnt PAM.

(A) Pre-loading FZD5-CRD with PAM enhanced its binding to TcdB-FBD based on pull-down assays. (B) Superimposed structures of the TcdB-FBD-CRD2 and the Wnt8-CRD8 complexes. The two distinct interfaces between Wnt8 (purple) and CRD8 (blue) are highlighted in circles (site 1 & 2). (C and D) Pre-loading Wnt3A to FZD5-CRD enhanced its binding to TcdB-FBD based on pull-down assays (C) and BLI assays (D). The enhancement was minimal for TcdB-FBD-F1597G. Sequential loading of different proteins to the biosensor and binding dissociation are indicated by different background colors. (E)

Pre-loading Wnt3A to CRD2 did not interfere with subsequent binding of TcdB-FBD. **(F)**
Pre-loading CRD2 with TcdB-FBD impeded subsequent binding of Wnt3A.

Author Manuscript

Author Manuscript

Author Manuscript

Author Manuscript

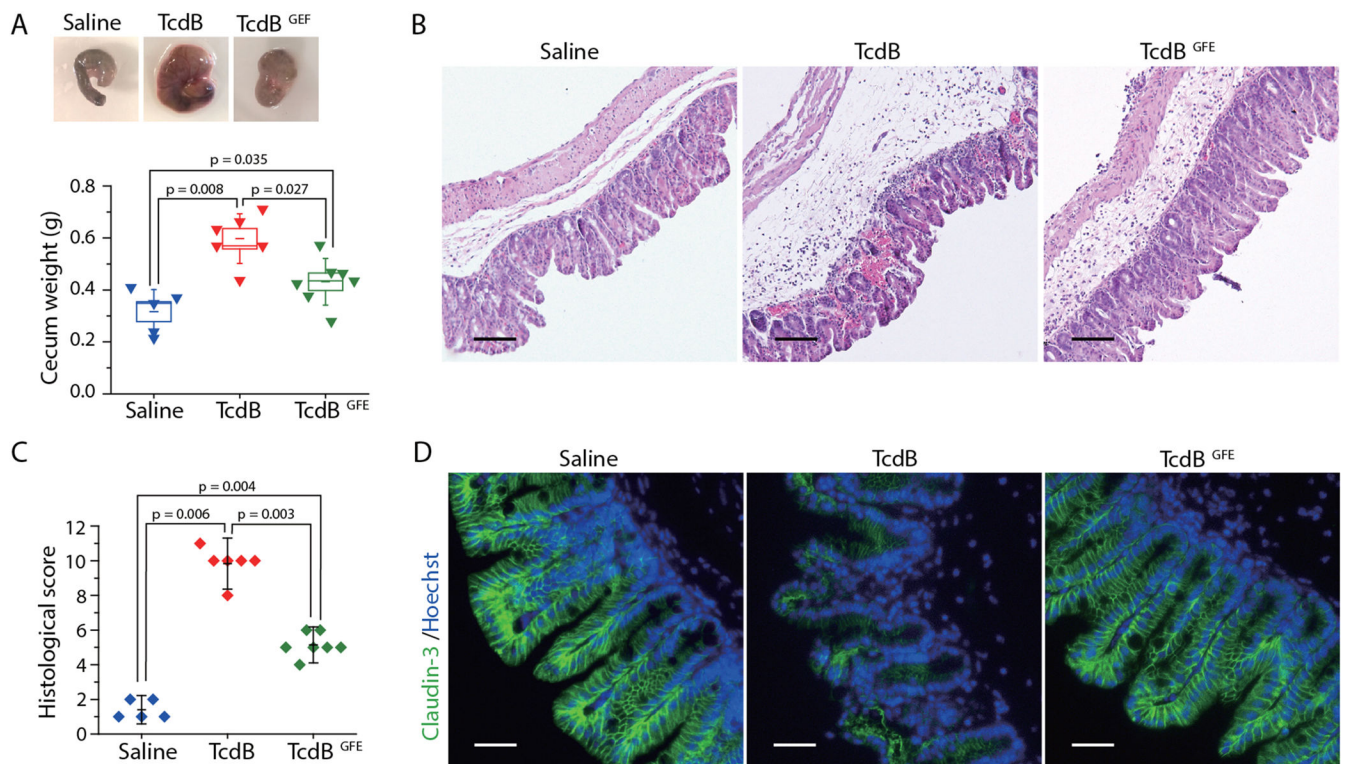


Fig. 5. FZDs and the FZD-bound fatty acids are the major pathologically relevant receptors for TcdB in the colonic tissues.

(A) WT TcdB (15 μ g), TcdB^{GFE} (15 μ g) or the saline control was injected into the cecum of WT mice *in vivo*. The cecum tissues were harvested 12 hours later. The representative cecum tissues were shown, and the weight of each cecum was measured and plotted. (Boxes represent mean \pm standard error of the mean, s.e.m.), and the bars represent s.d., Mann-Whitney). (B, C) Cecum tissue sections were subjected to hematoxylin and eosin (H&E) staining. The representative images were shown in panel B. The histological scores (panel C) were assessed based on disruption of the epithelia, hemorrhagic congestion, mucosal edema, and inflammatory cell infiltration. (Data are mean \pm s.d., Mann-Whitney). Scale bar, 100 μ m. (D) Immunofluorescent staining of epithelial cell junction marker Claudin-3 (green) in ceca from mice injected with saline, TcdB, or TcdB^{GFE} (blue indicates cell nuclei). Scale bar, 50 μ m.