

Effects of a COPD self-management support intervention: a randomized controlled trial

Heidi B Bringsvor^{1,2}

Eva Langeland³

Björg Frøysland Oftedal²

Knut Skaug¹

Jörg Assmus⁴

Signe Berit Bentsen⁵

¹Department of Research and Innovation, Helse Fonna HF, Haugesund, Norway; ²Department of Quality and Health Technology, Faculty of Health Sciences, University of Stavanger, Stavanger, Norway;

³Department of Health and Caring Sciences, Western Norway University of Applied Sciences, Bergen, Norway;

⁴Center for Clinical Research, Department of Research and Innovation, Haukeland University Hospital, Bergen, Norway; ⁵SHARE-Centre for Resilience in Health Care, Department of Quality and Health Technology, Faculty of Health Sciences, University of Stavanger, Stavanger, Norway

Background: This study examines the effects of the COPD-specific health promoting self-management intervention “Better living with COPD” on different self-management-related domains, self-efficacy, and sense of coherence (SOC).

Methods: In a randomized controlled design, 182 people with COPD were allocated to either an intervention group (offered Better living with COPD in addition to usual care) or a control group (usual care). Self-management-related domains were measured by the Health Education Impact Questionnaire (heiQ) before and after intervention. Self-efficacy was measured by the General Self-Efficacy Scale (GSE) and SOC was measured by the 13-item Sense of Coherence Scale (SOC-13). Effects were assessed by ANCOVA, using intention-to-treat (ITT) analysis and per-protocol analysis (PPA).

Results: The PPA and the ITT analysis showed significant positive changes on Constructive attitudes and approaches (heiQ) (ITT: $P=0.0069$; PPA: $P=0.0021$) and Skill and technique acquisition (heiQ) (ITT: $P=0.0405$; PPA: $P=0.0356$). Self-monitoring and insight (heiQ) showed significant positive change in the PPA ($P=0.0494$). No significant changes were found on the other self-management domains (heiQ), self-efficacy (GSE), or SOC (SOC-13).

Conclusion: Better living with COPD had a significant positive short-term effect on some self-management-related domains, and could be an intervention contributing to the support of self-management in people with COPD. However, further work is needed to establish the clinical relevance of the findings and to evaluate the long-term effects.

Keywords: constructive attitudes and approaches, Health Education Impact Questionnaire (heiQ), self-efficacy, self-monitoring and insight, sense of coherence, skill and technique acquisition

Introduction

COPD is characterized by persistent airflow limitation and respiratory symptoms, due to abnormalities in airways and/or the alveolus, and is a leading cause of mortality and morbidity worldwide.^{1,2} The disease is common, preventable, and treatable,² and individuals living with COPD must make daily decisions regarding their own care; thus, self-management is an essential part of living with COPD^{3,4} and essential for the health care system’s efficiency and effectiveness.⁵ Still, previous studies suggest that individuals’ management of COPD is often far from optimal.^{6–8}

Various self-management support interventions (SMIs) have been developed to facilitate adequate self-management of COPD.^{9,10} However, agreement on the definition of SMIs has previously been lacking,¹¹ although their multifaceted nature and emphasis on enhancing people’s active roles and responsibilities have been highlighted.¹² Recent guidelines state that SMIs for people with COPD are “structured but personalized and often multi-component interventions, with goals of motivating, engaging and supporting

Correspondence: Heidi B Bringsvor
Department of Research and Innovation,
Helse Fonna HF, Postboks 2170, 5504
Haugesund, Norway
Tel +47 5273 2770
Email heidi.breistrand.bringsvor@helse-
fonna.no

the participants to positively adapt their behavior(s) and develop skills to better manage their disease".^{13,14} SMIs should provide information,¹² elicit personalized goals, formulate appropriate strategies, and focus on intrinsic processes (eg, motivation, resource utilization, coping, and self-efficacy),^{11,13–15} and mental health.¹⁰ Furthermore, behavior change techniques are recommended to elicit participants' motivation, confidence, and competence.¹⁴

Recent systematic reviews and meta-analyses of randomized controlled trials of COPD-specific multicomponent SMIs in primary care show positive effects of SMIs, such as a reduced number of unscheduled physician visits¹⁶ and COPD-related hospital admissions,^{9,12,17} reduced emotional distress,^{16,17} improved health-related quality of life (HRQoL),⁹ and increased self-efficacy.¹⁶ Two other systematic and integrative reviews^{18,19} reported less dyspnea,¹⁸ changed health care utilization,^{18,19} and improved HRQoL in people who have undergone SMIs.^{18,19} However, some studies included in the reviews^{12,16–19} contain supervised exercises. This exceeds support levels coherent with SMIs in COPD¹¹ and makes it difficult to distinguish between the effects of the SMI and those of the exercise component. Furthermore, SMIs can have a specified salutogenic orientation and/or use motivational interviewing (MI) techniques. A study by Benzo et al²⁰ concludes that the use of MI may increase a person's commitment and engagement in self-management and be feasible for people living with COPD, and evidence from related health care settings indicates that the use of a salutogenic orientation may be feasible and effective.²¹

Few studies have examined the effects of COPD-specific SMIs on self-management-related abilities or behavior. One study's effects include improved skill and technique acquisition, improved self-monitoring and insight, and more constructive attitudes and approaches.²² Studies have also found better adherence to inhalation treatment and techniques,²³ increased smoking cessation,²⁴ improved knowledge of COPD,^{23–25} improved identification and treatment of exacerbations,²³ and improved activation for self-management²² in those who have undergone COPD-specific SMIs.

The importance of integrating SMIs in the primary care setting has been increasingly accentuated.^{3,26} In this study, we have developed a structured and salutogenic oriented health-promoting COPD-specific SMI, named Better living with COPD,²⁷ for implementation in local municipal health services. Our hypothesis is that Better living with COPD would improve different self-management-related domains, general self-efficacy, and sense of coherence (SOC).

Material and methods

Design and participants

This randomized controlled trial ([ClinicalTrials.gov](https://clinicaltrials.gov/ct2/show/study/NCT02479841) identification: NCT02479841) examines the effects of Better living with COPD on eight self-management-related domains (primary outcomes), general self-efficacy and SOC (secondary outcomes) in a parallel design, with a baseline measure (before randomization) and a follow-up measure 1–2 weeks after the intervention period. We expected that different self-management-related domains would be improved, but general self-efficacy and SOC are rather stable personal characteristics,^{29–31} therefore it is possible that the time frame (a few weeks after the intervention period) might be too short to see changes in general self-efficacy and SOC.

Participants with COPD from eleven municipalities on the west coast of Norway were recruited from a hospital register with the following inclusion criteria: registered ICD-10 code J44.0, 1, 8, or 9 after January 1, 2010; age ≥ 18 years; confirmed COPD grade II–IV, according to the Global Initiative for Chronic Obstructive Lung Disease (GOLD);³² and the ability to read and speak Norwegian. Exclusion criteria were substantial cognitive impairment reported in a medical journal (eg, severe dementia, severe Alzheimer's disease), substantial alcohol and/or drug abuse, or a life expectancy < 12 months due to comorbidity. Evaluation of fulfillment of inclusion and exclusion criteria was conducted by a research nurse and a lung specialist in collaboration.

The Health Education Impact Questionnaire (heiQ) was considered the primary outcome, and a sample power for a two-sample *t*-test (individual randomization), with a suggested effect size of 0.50 (Cohen's *d*), a significance level of 0.05, and 80% power, together with an allowed 20% attrition rate, resulted in the inclusion of a minimum of 154 participants.

Allocation, randomization, and procedures

The allocation ratio was 1:1. Included participants were given a running number (based on the alphabetical order of last names), and then the numbers were randomized by a statistician (using MATLAB³³) with no access to the participant list. However, the geographically varying recruitment for a group intervention led to challenges with the allocation. Based on previous research,³⁴ the minimum group size was set to five participants, and as an attrition of 20% was expected, this indicates that at a minimum of six participants were to be allocated to each group. In municipalities with fewer than 12 registered participants, it was therefore not possible to establish two groups, and we decided to allocate one group to either intervention or control. In the larger

municipalities, participants were allocated individually to the groups. The participants were randomly assigned to groups of ten within the municipality, and then the groups were randomized to either intervention or control, whereas participants from municipalities with only one group were randomized to either intervention or control at the municipality level. In total, 61 participants from six municipalities were randomized at the municipality level, whereas 121 participants were individually randomized. Of the 182 study participants, 92 were randomized to an intervention group and 90 to a control group. Those randomized to an intervention group were offered Better living with COPD in addition to usual care, whereas those randomized to a control group received usual care, although they were informed that they would be offered the intervention ~6 months later.

Participants were recruited between February and June 2015. Questionnaires including demographic and clinical characteristics were measured at baseline (inclusion), whereas the self-management-related domains, general self-efficacy, and SOC were measured at baseline and follow-up. The questionnaires were sent by post, and one reminder was sent out after ~3 weeks in cases with no response.

All participants received an information letter about the study before agreeing to participate and were informed of their allocation in a separate letter after randomization. The study was approved by the Regional Committee of Medical Research Ethics (reference no 2013/1741), and all participants gave written informed consent.

Intervention

The SMI, Better living with COPD, aimed to increase the participants' consciousness of their potential, their internal and external resources and their abilities to use them, and thus to improve their self-management capabilities in the context of everyday living. A salutogenic orientation was incorporated into the group conversations. This orientation included a focus on SOC; understanding, manageability, and meaningfulness, and on emphasizing health as a continuum, the person's history, the understanding of tension and strain as potentially health promoting, resources for health, and active adaption,^{34,35} as described by Langeland et al.^{36,37} MI,³⁸⁻⁴⁰ congruent with improvement in self-efficacy,^{41,42} enhanced activation for self-management,⁴² and a salutogenic approach,⁴³ was used as a communication technique.

The intervention consists of weekly 2-hour-long group conversations over 11 weeks.⁴⁴ The face-to-face conversations took place in meeting locations in the participants' home municipalities. The sessions started with participants

discussing their everyday life experiences. The next part was related to topics initiated by conversations based on reflected notes (homework) related to those topics, voluntarily prepared by the participants. Themes such as problem solving, goal setting, symptoms, social challenges, physical activity, nutrition, medication, smoking cessation, exacerbations, and psychological issues were covered.²⁷ A small booklet with information and advice about physical activity, nutrition, dyspnea, and health care resources was handed out during the SMI⁴⁵ in addition to a general COPD action plan draft.⁴⁶ Each session followed a similar structure,^{27,36} albeit customized according to group dynamics and participants' needs. From this, the intervention was delivered as planned, but with some variation due to differences in group dynamics.

All group sessions were planned to be moderated by two moderators. The main moderator was a registered nurse (RN) with special competence in COPD care,⁴⁷ salutogenesis, self-efficacy, and MI. In addition, the main moderator had initial training in the intervention and had previously co-moderated Better living with COPD with the first author. An RN and/or a physiotherapist from the participant's home municipality participated as co-moderator.

Usual care

The Norwegian guidelines for care and treatment of people with COPD include specific criteria regarding frequency of visits to a general practitioner, smoking cessation, physiotherapy, nutritional advice, and pulmonary rehabilitation.⁴⁸ Although it is possible that "usual care" varies between municipalities,^{49,50} the Norwegian health care system is mainly based on public funding and a principle of universal access regardless of residential area.⁵¹ Therefore, no precautions were taken in this study to ensure equality in usual care.

Measures

Demographic and clinical characteristics

Age and sex were obtained from the hospital register, whereas education, cohabitation, comorbidity, and years diagnosed with COPD were self-reported.

Lung function

For participants with spirometry conducted according to international standards^{52,53} less than 12 months prior to enrollment, data on post-bronchodilator FVC and FEV₁ were obtained from medical records. For participants with the last spirometry registered more than 12 months prior to enrollment, a new spirometry was conducted according to international standards.^{52,53} To calculate FEV₁ percentage

predicted ($FEV_1\%$ predicted), Norwegian reference values were used.⁵⁴ COPD disease severity was classified using GOLD criteria²: moderate (II), severe (III), or very severe (IV), defined as $FEV_1/FVC < 0.7$ and $FEV_1\%$ 50%–79% (II), $FEV_1\%$ 30%–49% (III), or $FEV_1\%$ <30% (IV).²

Modified Medical Research Council (mMRC)

Dyspnoea Scale

The mMRC^{48,55} Dyspnoea Scale was used to measure dyspnea. This measure asks people to rate dyspnea by choosing the statement best describing when dyspnea occurs. Different statements describing decreasing levels of physical activity that may precipitate shortness of breath are presented on a five-point scale (range 0–4), with higher scores indicating more severe dyspnea.^{2,55} The mMRC Dyspnoea Scale has shown satisfactory reliability and validity.^{56–58}

COPD Assessment Test (CAT)

To measure COPD symptom burden, the CAT⁵⁹ was used. The CAT consists of eight items (cough, phlegm, chest tightness, breathlessness, activities, confidence, sleep, and energy) rated on a 0–5 scale. The total score range is 0–40, with a higher score indicating a higher symptom burden.^{59–61} The CAT has shown satisfactory reliability and validity.^{59,60,62,63}

Self-management

HeiQ, version 2.0,^{28,64} was used to measure eight self-management-related domains: 1) Positive and active engagement in life; 2) Health directed activities; 3) Skill and technique acquisition; 4) Constructive attitudes and approaches; 5) Self-monitoring and insight; 6) Health service navigation; 7) Social integration and support; and 8) Emotional distress. HeiQ comprises 40 items, scored on a Likert scale ranging from 1 (strongly disagree) to 4 (strongly agree).^{28,64} Domain scores are calculated by adding the score of items within scales and dividing by the number of items; consequently, all domain scores range between 1 and 4. Higher scores indicate higher levels of self-management ability for all domains, except for the Emotional distress domain, where a higher score indicates more emotional distress. This generic questionnaire has shown satisfactory validity and reliability across diverse settings,^{28,64–67} and has been used in studies including people with COPD.^{22,68,69} Cronbach's alpha ranged from 0.63 (Health service navigation) to 0.90 (Emotional distress).

General Self-Efficacy Scale (GSE)

The GSE was used to measure self-efficacy. The GSE is a ten-item scale designed to assess perceived general self-efficacy.^{70–72} Each item is scored on a Likert scale ranging from 1 (not at all

true) to 4 (exactly true), generating a sum score ranging from 10 to 40. Higher scores indicate higher self-efficacy.^{70,71} Up to two responses (20%) were allowed to be missing and were replaced by the mean value of the person's valid scores.⁷³ The GSE has been used in studies including people with COPD,^{73,74} and has shown satisfactory reliability and validity.^{30,70,71,73,75}

Sense of Coherence Scale-13 (SOC-13)

SOC was measured using the SOC-13.²⁹ The SOC-13 is a 13-item short form of the original 29-item Orientation to Life Questionnaire.²⁹ Each item is rated on a seven-point Likert scale, where the most common anchor points are “never” and “very often”.²⁹ The items cover comprehensibility (five items), manageability (four items), and meaningfulness (four items), generating a total sum score ranging from 13 to 91. Higher scores indicate stronger SOC.⁷⁰ The SOC-13 has satisfactory reliability and validity,^{76–80} and has been used in previous COPD studies.^{81,82} In this study, missing data were substituted separately for individuals who answered at least 75% of the items for each component.

Data handling and statistical analysis

Missing data were a problem in the collected data. We used the observed data for all descriptive analyses. For the inference, we used multiple imputation with 50 imputed data sets.⁸³ The imputation was based on information about heiQ, age, sex, education, $FEV_1\%$ predicted, GSE, and SOC-13. Data were blinded during the analyses, ie, the groups were labeled with non-identifying terms.

Descriptive statistics were used to characterize the sample. The SMI effect on each heiQ domain, GSE, and SOC-13 was assessed by an analysis of covariance (ANCOVA), ie, a linear model for the follow-up measurement of each outcome depending on intervention type and adjusted for its baseline measure. All models were estimated using intention-to-treat (ITT) analysis and per-protocol analysis (PPA). The ITT analysis was conducted for all available data, while inclusion in the PPA required participants to follow the protocol sufficiently; ie, we included in the PPA all participants who had participated in more than half of the group conversations. The general significance level was set to 0.05. All descriptive computations were conducted using SPSS 24 (IBM Corp., Armonk, NY, USA), whereas the imputation and inference (ANCOVA) were carried out using R 3.4⁸⁴ with the package mice 2.46.⁸⁵

Results

Participants' characteristics

Of the 649 people invited to participate, 225 (34.7%) consented (baseline). Of these, 43 were excluded; ten were

allocated to a pilot study and 33 either withdrew from further participation before randomization or responded post-randomization (Figure 1). Consequently, 182 participants were included in this study. The attrition rate was 22.2% in the control group and 31.5% in the intervention group (ITT).

Participants' characteristics at baseline are shown in Table 1. Self-monitoring and insight (heiQ) had the highest mean \pm SD score at 3.03 ± 0.35 , whereas Health directed activities (heiQ) had the lowest mean score at 2.63 ± 0.63 . The mean score for Emotional distress (heiQ) was 2.38 ± 0.62 , and the mean scores for self-efficacy (GSE) and SOC (SOC-13) were 25.97 ± 6.42 and 64.59 ± 9.64 , respectively.

Effects of Better living with COPD

As shown in Table 2, both PPA and ITT analysis showed significant positive changes on Constructive attitudes and approaches (heiQ) (PPA: $P=0.0021$, $d=0.38$; ITT: $P=0.0069$, $d=0.32$) and Skill and technique acquisition (heiQ) (PPA: $P=0.0405$, $d=0.17$; ITT: $P=0.0356$, $d=0.17$). While the estimated effect on Constructive attitudes and approaches (heiQ) was slightly higher using the PPA [mean change difference (95% CI) PPA: 0.16 (0.03 to 0.30) vs ITT: 0.14 (0.00 to 0.27)], the effect on Skill and technique acquisition (heiQ) [PPA: 0.06 (-0.07 to 0.19); ITT: 0.06 (-0.06 to 0.19)] was similar for both. In addition, the PPA indicated a significant positive change in self-monitoring and insight

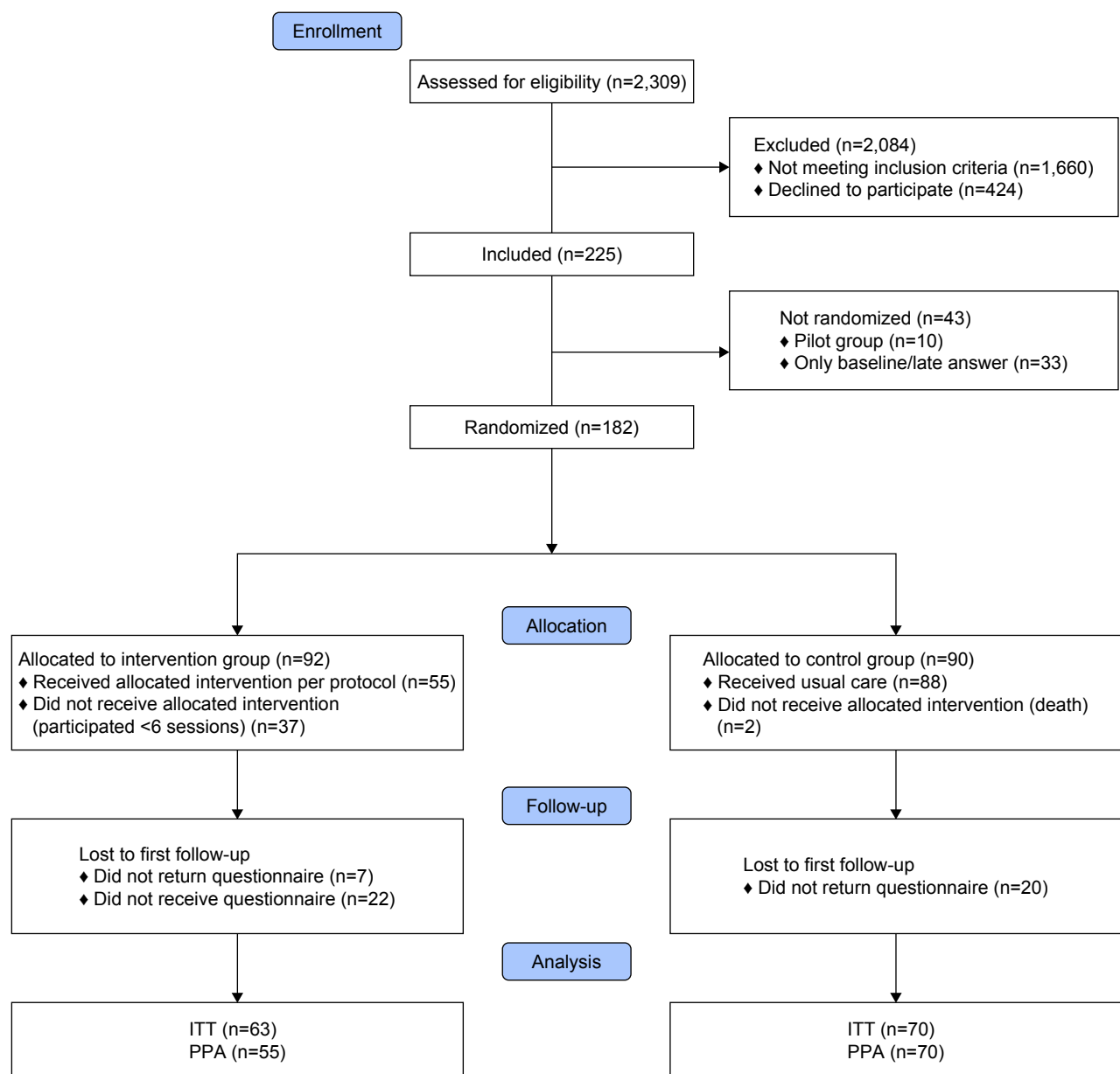


Figure 1 Overview of recruitment, allocation, and randomization.
Abbreviations: ITT, intention to treat; PPA, per-protocol analysis.

Table 1 Characteristics of participants at baseline

	Randomized (N=182) ⁱ	Intervention (N=92) ^j	Control (N=90) ^j
	Value	Value	Value
Age (years)	68.93±8.58	68.53±8.16	69.34±9.02
Sex, male	111 (61.0)	54 (58.7)	57 (63.3)
Education			
Primary school	57 (32.2)	29 (31.9)	28 (32.6)
High school/university	120 (67.8)	62 (68.1)	58 (67.4)
Cohabitation, living alone ^a	54 (30.0)	27 (29.3)	27 (30.7)
Other chronic disease ^b	170 (96.6)	87 (95.6)	83 (97.6)
Comorbidity ^c	2.51±1.87	2.68±1.91	2.33±1.82
FEV ₁ % predicted	45.03±15.31	45.22±14.44	44.84±16.23
GOLD ^d grade			
GOLD II	73 (40.1)	35 (38.0)	38 (42.2)
GOLD III	73 (40.1)	42 (45.7)	31 (34.4)
GOLD IV	36 (19.8)	15 (16.3)	21 (23.3)
Years diagnosed with COPD	8.83±5.87	9.20±6.25	8.47±5.49
CAT ^e score	19.09±7.35	18.68±7.15	19.51±7.58
mMRC ^f score	1.82±1.09	1.88±1.06	1.76±1.12
mMRC grade 0	20 (11.6)	7 (7.9)	13 (15.5)
mMRC grade 1	51 (29.5)	29 (32.6)	22 (26.2)
mMRC grade 2	51 (29.5)	27 (30.3)	24 (28.6)
mMRC grade 3	42 (24.3)	20 (22.5)	22 (26.2)
mMRC grade 4	9 (5.2)	6 (6.7)	3 (3.6)
Self-management domains ^g			
Positive and active engagement in life	2.92±0.44	2.96±0.41	2.88±0.46
Health directed activities	2.63±0.63	2.63±0.68	2.64±0.58
Skill and technique acquisition	2.70±0.44	2.73±0.45	2.68±0.43
Constructive attitudes and approaches	2.89±0.44	2.90±0.40	2.88±0.48
Self-monitoring and insight	3.03±0.35	3.06±0.35	3.00±0.35
Health service navigation	2.87±0.38	2.93±0.38	2.82±0.38
Social integration and support	2.80±0.44	2.83±0.41	2.77±0.48
Emotional distress	2.38±0.62	2.41±0.62	2.34±0.63
GSE ^h total score	25.97±6.42	26.92±6.16	24.96±6.57
SOC-13 ⁱ total score	64.59±9.64	65.10±9.64	64.06±9.66

Notes: Data are shown as mean ± SD or n (%). ^aCohabitation: living alone; living with someone. ^bOther chronic disease: yes; no. ^cComorbidity: rated between 0 (no comorbidities) and 16 based on a list of common comorbidities. ^dGOLD, grading of lung function; mild (I), moderate (II), severe (III), or very severe (IV), defined as FEV₁/FVC <0.7 and FEV₁% ≥80% (I), FEV₁% 50%–79% (II), FEV₁% 30%–49% (III), or FEV₁% <30% (IV). ^eCAT: score range: 0–40. ^fmMRC: score range: 0–4. ^gDomains of the heiQ: score range: 1–4. ^hGSE: score range: 10–40. ⁱSOC-13: score range: 13–91. ^jN=182, N=92, and N=90 are the largest N values; for some variables the N is lower.

Abbreviations: CAT, COPD Assessment Test; GOLD, Global Initiative for Chronic Obstructive Pulmonary Disease; GSE, General Self-Efficacy Scale; heiQ, Health Education Impact Questionnaire; mMRC, modified Medical Research Council Dyspnoea Scale; SOC-13, 13-item Sense of Coherence Scale.

(heiQ) [$P=0.0494$, $d=0.15$, mean change difference (95% CI): 0.05 (−0.07 to 0.18)], although this was not significant in the ITT analysis (Table 2). The changes found in the other self-management domains were insignificant ($P\geq 0.0944$), as were the changes in general self-efficacy (GSE) and SOC (SOC-13) ($P\geq 0.1814$).

Discussion

Better living with COPD had a significant positive effect on Constructive attitudes and approaches in both PPA and ITT analysis. Constructive attitudes and approaches covers the important shift in how people view the impact of their condition on their lives, positive attitude, and sense of control and empowerment.^{28,64} Our finding is supported by a longitudinal

study that found improvement in Constructive attitudes and approaches after a similar group-based SMI.²² Together, these findings suggest that participation in SMIs could improve Constructive attitudes and approaches for people with COPD. Although the effect size is larger in the PPA ($d=0.38$), the ITT analysis ($d=0.32$) better reflects the clinical effect.^{86,87} An effect size of 0.32 is considered small, according to Cohen,⁸⁸ but is higher than the estimated benchmark effect sizes for change in Constructive attitudes and approaches, varying from 0.19 to 0.21.⁶⁷ The salutogenic orientation of Better Living with COPD could be one explanation for the positive effect on Constructive attitudes and approaches. A salutogenic orientation focuses on health as a continuum, the person's history, active adaption, and salutary factors, and stressors are

Table 2 Effects of better living with COPD (primary outcomes) evaluated by PPA and ITT analysis, ANCOVA: means from baseline and follow-up, mean change difference and effect size

Self-management domains	PPA ^c												ITT												
	Control			Intervention			Mean change difference ^b			Control			Intervention			Mean change difference ^b			P-value ^d						
	N	Mean ± SD ^a		N	Mean ± SD ^a		Mean	95% CI	d	N	Mean ± SD ^a		N	Mean ± SD ^a		Mean	95% CI	d	N	Mean ± SD ^a		N	Mean ± SD ^a		P-value ^d
Positive and active engagement in life	68	2.87±0.47		54	2.94±0.40		0.02	-0.13 to 0.17	0.04	86	2.88±0.46		91	2.96±0.41		0.00	-0.14 to 0.14	0.00	86	2.88±0.46		91	2.96±0.41		0.5543
	68	2.91±0.49		54	3.00±0.32					68	2.91±0.47		60	2.97±0.33					60	2.97±0.33		60	2.97±0.33		
Health directed activities	67	2.60±0.54		54	2.53±0.71		0.13	-0.04 to 0.30	0.27	85	2.64±0.58		91	2.63±0.68		0.11	-0.05 to 0.28	0.25	85	2.64±0.58		91	2.63±0.68		0.3225
	69	2.67±0.53		54	2.68±0.59					69	2.67±0.53		60	2.70±0.59					60	2.70±0.59		60	2.70±0.59		
Skill and technique acquisition	68	2.68±0.45		54	2.78±0.44		0.06	-0.07 to 0.19	0.17	86	2.68±0.43		90	2.73±0.45		0.06	-0.06 to 0.19	0.17	86	2.68±0.43		90	2.73±0.45		0.0356
	67	2.70±0.35		55	2.85±0.40					67	2.70±0.35		61	2.85±0.38					61	2.85±0.38		61	2.85±0.38		
Constructive attitudes and approaches	68	2.88±0.46		54	2.93±0.43		0.16	0.03 to 0.30	0.38	86	2.88±0.48		90	2.90±0.40		0.14	0.00 to 0.27	0.32	86	2.88±0.48		90	2.90±0.40		0.0069
	67	2.87±0.41		54	3.09±0.39					67	2.87±0.41		61	3.07±0.41					61	3.07±0.41		61	3.07±0.41		
Self-monitoring and insight	69	2.97±0.34		54	3.05±0.33		0.05	-0.07 to 0.18	0.15	87	3.00±0.35		91	3.06±0.35		0.02	-0.10 to 0.15	0.07	87	3.00±0.35		91	3.06±0.35		0.0944
	69	2.98±0.32		55	3.11±0.27					69	2.98±0.32		61	3.09±0.27					61	3.09±0.27		61	3.09±0.27		
Health service navigation	68	2.79±0.37		54	2.92±0.35		-0.00	-0.14 to 0.13	-0.01	86	2.82±0.38		91	2.93±0.38		0.00	-0.13 to 0.13	0.00	86	2.82±0.38		91	2.93±0.38		0.3635
	67	2.86±0.39		55	3.00±0.37					67	2.86±0.39		62	3.00±0.38					62	3.00±0.38		62	3.00±0.38		
Social integration and support	69	2.79±0.48		53	2.80±0.42		0.02	-0.11 to 0.16	0.06	87	2.77±0.48		89	2.83±0.41		0.02	-0.11 to 0.14	0.05	87	2.77±0.48		89	2.83±0.41		0.5840
	67	2.78±0.46		55	2.82±0.46					67	2.78±0.46		61	2.82±0.45					61	2.82±0.45		61	2.82±0.45		
Emotional distress	68	2.32±0.60		54	2.30±0.61		-0.04	-0.22 to 0.14	-0.08	86	2.34±0.63		90	2.41±0.62		-0.03	-0.20 to 0.14	-0.06	86	2.34±0.63		90	2.41±0.62		0.8914
	67	2.29±0.56		55	2.31±0.70					67	2.29±0.56		61	2.32±0.71					61	2.32±0.71		61	2.32±0.71		

Notes: ^aMeans are presented from the data, therefore all participants (the total intervention and control groups) who provided data are included in the ITT description of means, including those with responses at only baseline or follow-up. ^bMean change difference in both PPA and ITT is from the data; therefore, for both PPA and ITT only those with responses at both baseline and follow-up are represented. ^cIncluded in PPA were those who participated in more than half of the sessions on Better living with COPD. ^dP-value is from the ANCOVA based on multiple imputation (50 imputed data sets based on information on heiQ, education, FEV₁%, GSE, and SOC). A P-value <0.05 was considered statistically significant and is marked in bold.

Abbreviations: ANCOVA, analysis of covariance; d, Cohen's d; GSE, general self-efficacy; heiQ, Health Education Impact Questionnaire; ITT, intention-to-treat; PPA, per-protocol analysis; SOC, sense of coherence.

seen as possibly salutary,^{29,36,37,89} and may have contributed to a shift in participants' attitudes and approaches.

Better living with COPD also had a positive effect on Skill and technique acquisition, significant in both PPA and ITT analysis. The Skill and technique acquisition scale captures knowledge-based skills and techniques related to managing disease-related symptoms and health problems, including the use of particular aids,²⁸ and our finding is supported by Turner et al.²² Inhalation techniques are important skills and techniques related to medication adherence in COPD.^{13,90} However, incorrect inhalation techniques are common,^{13,91,92} and inhalation techniques were therefore specifically addressed as a topic in one group session. As a result of this, a surprising finding was the small effect size ($d=0.17$) in Skill and technique acquisitions. One possible explanation may be related to the group-based intervention. Previous research suggests that repeating education and teach-back approaches are recommended,⁹³⁻⁹⁵ but in Better living with COPD, inhalation techniques were specifically addressed at one group session, and a teach-back approach was not mandatory for participants. Another possible explanation could be that inhalation techniques were not what participants had in mind when responding to the generic items in the Skill and technique acquisition scale.²⁸

Furthermore, a significant positive effect of Better living with COPD was also found in the PPA for Self-monitoring and insight ($P=0.0494$). This is in accordance with the findings in the longitudinal study by Turner et al.²² Still, the effect size in this study ($d=0.15$) was smaller than the estimated benchmark effect sizes for change in this domain in chronic diseases in general.⁶⁷ Also, the benchmark sizes presented for changes in heiQ scores are not benchmark sized for clinical relevance.⁶⁷ Therefore, the clinical relevance of the improvements found on Self-monitoring and insight, as well as on the Constructive attitudes and approaches and Skill and technique acquisition domains, is uncertain.

No significant effects were found on Positive and active engagement in life, Health directed activities, Health service navigation, Social integration and support, or Emotional distress. Previous randomized controlled studies including participants with chronic conditions have reported effects of various SMIs on one or more of these domains.⁹⁶⁻⁹⁸ However, differences between the SMIs, the context, and the participants make direct comparisons difficult, and possible explanations for our findings are multiple. For example, in accordance with models clarifying COPD-specific SMIs,¹¹ Better living with COPD did not include supervised physical training. However, previous studies

on pulmonary rehabilitation programs found the frequency and duration of supervised training to be crucial to increasing physical activity levels,⁹⁹ and items related to physical activity are included in the Health directed activities domain of heiQ.²⁸ Our findings could therefore suggest that support of some self-management-related domains could be better met by means additional to the ones included in Better living with COPD (eg, supervised physical training and individual teach-back methods).

In addition, the changes found in general self-efficacy and SOC were insignificant. The self-management-related domains are described as proximal outcomes of SMIs,²⁸ but because self-efficacy and SOC are relatively stable personal characteristics,²⁹⁻³¹ change may need time to develop. This is in line with descriptions of general self-efficacy and SOC as more distal outcomes of SMIs.²⁸ The post-intervention scores were measured shortly after the intervention period, and it is possible that the time frame was too short to detect developing changes in these characteristics. Further work including long-term evaluations is warranted.

Some methodological remarks should be mentioned. Three different nurses were the main group moderators and participants were actively involved in the conversations, leading to possible differences in group dynamics. Although group moderators had education before the SMI, their experience with a specific salutogenic orientation varied, and none had previous experience using MI in group contexts. This may have introduced additional variance, possibly reflecting variance in a real-life clinical implementation, but the effects may have been weaker than with experienced group moderators. The response rate was low, although similar to another study of self-management (cross-sectional),¹⁰⁰ but slightly lower than the response rate in another comparable study with inclusion criteria from a hospital register using postal mail.¹⁰¹ A low response rate may increase the risk of volunteer bias. The baseline measurement was performed before randomization, but since participants could not be further blinded, desirability bias could account for some changes in the intervention group. Knowledge of group assignment may affect participants' responses to outcome measures and their behavior in the trial.¹⁰² Yet, this bias may have been reduced by the control group's expectation of being offered the intervention after the study and possible activation following their knowledge of future SMI participation. Being informed that they would be offered the intervention after ~6 months could have had an impact on participants' experience of the usual care provided.¹⁰³ In addition, this study only explored short-term effects possibly affected by

positive experiences in the group conversations. Long-term effects as well as prognostic or predictive factors are yet to be investigated. It is also possible that we had easier access to participants through hospital registers, and inclusion may differ in clinical practice. Previous studies suggest that SMIs may be hampered by challenges faced in real-world clinical settings, such as referrers' lack of enthusiasm.¹⁰⁴

One study limitation is that the follow-up measurements were limited because of a clerical error, where 22 intervention group participants did not receive follow-up questionnaires (Figure 1) after leaving the groups. This introduced unnecessary missing data in the ITT analysis. Unfortunately, we lack sufficient information to determine whether this affected the results, although there were no significant differences between these 22 and other participants at baseline on any of the self-management-related domains. This error also made it difficult to evaluate the attrition rate for those allocated to an intervention group, but the attrition rate was slightly higher (22.2%) than the estimated 20% for those allocated to a control group. In addition, we had to adapt the randomization procedure because of unexpectedly few participants in smaller municipalities, leading to a lower power than planned and a potential for introducing confounding variables owing to possible differences in services between the municipalities. The first author's participation in the SMIs could also raise methodological issues.

Conclusion

No randomized controlled studies have previously evaluated the effects of a salutogenic oriented SMI for people with COPD on the eight self-management-related domains, self-efficacy, and SOC specified in this study, and this study significantly adds to the knowledge of effects of disease-specific and health-promoting SMIs in COPD. Better living with COPD had significant positive effects on some self-management-related domains (Constructive attitudes and approaches, Skills and technique acquisition, and Self-monitoring and insight), whereas no significant effects were found on the other domains, general self-efficacy, and SOC. Therefore, Better living with COPD may serve as one of several means of self-management support, but further work is necessary to establish possible long-term effects of Better living with COPD on the specified domains and to evaluate possible long-term effects on SOC and self-efficacy.

Data sharing statement

Participant data (sociodemographic variables [age, sex, and GOLD grade] and the eight heiQ domains) used in

the analysis in this study, together with a complementary specification of the intervention, "Better living with COPD" (in Norwegian), can be obtained on direct request to the corresponding author.

Acknowledgments

The authors thank Mr Gunnar Egge for his contribution in planning and feasibility testing the intervention, and the municipalities for providing meeting locations and staff. This work was supported by the Western Norway Regional Health Authority [grant number 2013/911836] and the Norwegian Extra Foundation for Health and Rehabilitation [grant number 2015/RB13639].

Disclosure

The authors report no conflicts of interest in this work.

References

- López-Campos JL, Tan W, Soriano JB. Global burden of COPD. *Respirology*. 2016;21(1):14–23.
- GOLD. Global Strategy for the Diagnosis, Management, and Prevention of Chronic Obstructive Pulmonary Disease; 2018. Available from: <http://goldcopd.org/gold-reports/>. Accessed March 26, 2018.
- Bodenheimer T, Lorig K, Holman H, Grumbach K. Patient self-management of chronic disease in primary care. *JAMA*. 2002;288(19):2469–2475.
- Lorig KR, Holman H. Self-management education: history, definition, outcomes, and mechanisms. *Ann Behav Med*. 2003;26(1):1–7.
- Holman H, Lorig K. Patient self-management: a key to effectiveness and efficiency in care of chronic disease. *Public Health Rep*. 2004;119(3):239–243.
- Rogliani P, Ora J, Puxeddu E, Matera MG, Cazzola M. Adherence to COPD treatment: Myth and reality. *Respir Med*. 2017;129:117–123.
- Bryant J, McDonald VM, Boyes A, Sanson-Fisher R, Paul C, Melville J. Improving medication adherence in chronic obstructive pulmonary disease: a systematic review. *Respir Res*. 2013;14(1):109.
- Sriram KB, Percival M. Suboptimal inhaler medication adherence and incorrect technique are common among chronic obstructive pulmonary disease patients. *Chron Respir Dis*. 2016;13(1):13–22.
- Lenferink A, Brusse-Keizer M, van der Valk PD, et al. Self-management interventions including action plans for exacerbations versus usual care in patients with chronic obstructive pulmonary disease. *Cochrane Database Syst Rev*. 2017;8:CD011682.
- Newham JJ, Presseau J, Heslop-Marshall K, et al. Features of self-management interventions for people with COPD associated with improved health-related quality of life and reduced emergency department visits: a systematic review and meta-analysis. *Int J Chron Obstruct Pulmon Dis*. 2017;12:1705–1720.
- Wagg K. Unravelling self-management for COPD: what next? *Chron Respir Dis*. 2012;9(1):5–7.
- Jonkman NH, Westland H, Trappenburg JC, et al. Do self-management interventions in COPD patients work and which patients benefit most? An individual patient data meta-analysis. *Int J Chron Obstruct Pulmon Dis*. 2016;11:2063–2074.
- GOLD. Global Strategy for the Diagnosis, Management and Prevention of COPD, *Global Initiative for Chronic Obstructive Lung Disease*; 2017. Available from: <http://goldcopd.org>. Accessed September 3, 2017.
- Effing TW, Vercoulen JH, Bourbeau J, et al. Definition of a COPD self-management intervention: International Expert Group consensus. *Eur Respir J*. 2016;48(1):46–54.

15. van Hoof SM, Been-Dahmen MJM, Ista E, van Staa A, Boeije HR. A realist review: what do nurse-led self-management interventions achieve for outpatients with a chronic condition? *J Adv Nurs*. 2017;73(6):1255–1271.
16. Baker E, Fatoye F. Clinical and cost effectiveness of nurse-led self-management interventions for patients with COPD in primary care: A systematic review. *Int J Nurs Stud*. 2017;71:125–138.
17. Wang T, Tan JY, Xiao LD, Deng R. Effectiveness of disease-specific self-management education on health outcomes in patients with chronic obstructive pulmonary disease: An updated systematic review and meta-analysis. *Patient Educ Couns*. 2017;100(8):1432–1446.
18. Zwerink M, Brusse-Keizer M, van der Valk PD, et al. Self management for patients with chronic obstructive pulmonary disease. *Cochrane Database Syst Rev*. 2014;(3):CD002990.
19. Jonsdottir H. Self-management programmes for people living with chronic obstructive pulmonary disease: a call for a reconceptualisation. *J Clin Nurs*. 2013;22(5–6):621–637.
20. Benzo R, Vickers K, Ernst D, Tucker S, McEvoy C, Lorig K. Development and feasibility of a self-management intervention for chronic obstructive pulmonary disease delivered with motivational interviewing strategies. *J Cardiopulm Rehabil Prev*. 2013;33(2):113–123.
21. Pelikan JM. The Application of Salutogenesis in Healthcare Settings. In: Mittelmark MB, Sagy S, Eriksson M, editors. *The Handbook of Salutogenesis*. Cham: Springer International Publishing; 2017:261–266.
22. Turner A, Anderson J, Wallace L, Kennedy-Williams P. Evaluation of a self-management programme for patients with chronic obstructive pulmonary disease. *Chron Respir Dis*. 2014;11(3):163–172.
23. Garcia-Aymerich J, Hernandez C, Alonso A, et al. Effects of an integrated care intervention on risk factors of COPD readmission. *Respir Med*. 2007;101(7):1462–1469.
24. Efraimsson EO, Hillervik C, Ehrenberg A. Effects of COPD self-care management education at a nurse-led primary health care clinic. *Scand J Caring Sci*. 2008;22(2):178–185.
25. Walters J, Cameron-Tucker H, Wills K, et al. Effects of telephone health mentoring in community-recruited chronic obstructive pulmonary disease on self-management capacity, quality of life and psychological morbidity: a randomised controlled trial. *BMJ Open*. 2013;3(9):e003097.
26. Helse-og omsorgsdepartementet. St. meld. 47 (2008–2009). Samhandlingsreformen. Rett behandling – på rett sted – til rett tid; 2009. Norwegian. Available from: <https://www.regjeringen.no/no/dokumenter/stmeld-nr-47-2008-2009/id567201/>. Accessed June 1, 2018.
27. Bentsen SB, Bringsvor HB, Kallekott J, Iversen ES. *Bedre liv med kols; utprøving av et helsefremmende egenomsorgsprogram for pasienter med kols i nærmiljøet der de bor*. Extrastiftelsen; 2016. Norwegian. Available from: <https://www.extrastiftelsen.no/prosjekter/bedre-liv-med-kols/>. Accessed June 18, 2018.
28. Osborne RH, Elsworth GR, Whitfield K. The Health Education Impact Questionnaire (heiQ): an outcomes and evaluation measure for patient education and self-management interventions for people with chronic conditions. *Patient Educ Couns*. 2007;66(2):192–201.
29. Antonovsky A. *Unraveling the Mystery of Health: How People Manage Stress and Stay Well*. San Francisco: Jossey-Bass; 1987.
30. Scholz U, Doña BG, Sud S, Schwarzer R. Is general self-efficacy a universal construct? Psychometric findings from 25 countries. *Eur J Psychol Assess*. 2002;18(3):242–251.
31. Schwarzer R. *Self-efficacy: Thought Control of Action*. Washington DC: Hemisphere; 1992.
32. GOLD. Global Initiative for Chronic Obstructive Lung Disease: Global Strategy for the Diagnosis, Management and Prevention of COPD; 2014. Available from: <https://goldcopd.org/>. Accessed December 12, 2014.
33. MATLAB 9.0. Natick, MA: The MathWorks, Inc.
34. Antonovsky A. *Health, Stress, and Coping*. San Francisco: Jossey-Bass; 1979.
35. Antonovsky A. *Unravelling the Mystery of Health*. San Francisco: Jossey-Bass; 1987.
36. Langeland E, Wahl AK, Kristoffersen K, Hanestad BR. Promoting coping: salutogenesis among people with mental health problems. *Issues Ment Health Nurs*. 2007;28(3):275–295.
37. Langeland E, Riise T, Hanestad BR, Nortvedt MW, Kristoffersen K, Wahl AK. The effect of salutogenic treatment principles on coping with mental health problems: A randomised controlled trial. *Patient Educ Couns*. 2006;62(2):212–219.
38. Rollnick S, Miller WR. What is Motivational Interviewing? *Behav Cogn Psychother*. 1995;23(04):325–334.
39. Wagner CC, Ingersoll KS. *Motivational Interviewing in Groups*. New York: Guilford Press; 2013.
40. Rollnick S, Miller WR, Butler C. *Motivational Interviewing in Health Care: Helping Patients Change Behavior*. New York: Guilford Press; 2008.
41. Lane C, Butterworth S, Speck L. Motivational interviewing groups for people with chronic health conditions. In: Wagner CC, Ingersoll KS, editors. *Motivational Interviewing in Groups*. New York: Guilford Press; 2013:314–331.
42. Linden A, Butterworth SW, Prochaska JO. Motivational interviewing-based health coaching as a chronic care intervention. *J Eval Clin Pract*. 2010;16(1):166–174.
43. Højdahl T, Magnus JH, Hagen R, Langeland E. “VINN”- An accredited motivational program promoting convicted women’s sense of coherence and coping. *Euro Vista*. 2013;2(3):177–190.
44. Bentsen SB, Langeland E, Holm AL. Evaluation of self-management interventions for chronic obstructive pulmonary disease. *J Nurs Manag*. 2012;20(6):802–813.
45. Alsaker T, Egge G, Knutsen BF. Livet med kols – egeninnsats. Helse Fonna, Tysvær kommune, Landsforeningen for hjerte-og lungesyke & FOUSAM; 2014. Norwegian. Available from: http://www.helsetorg-modellen.net/wp-content/uploads/2015/01/kols_brosjyre.pdf. Accessed June 12, 2018.
46. Alsaker T, Egge G, Knutsen BF. Livet med kols – Egenbehandlingssplan. Helse Fonna, Tysvær kommune, Landsforeningen for hjerte-og lungesyke & FOUSAM; 2014. Norwegian. <https://helse-fonna.no/seksjon-behandling/documents/livet-med-kols-behandlingsplan.pdf>. Accessed June 12, 2018.
47. Berland A, Bentsen SB. Patients with chronic obstructive pulmonary disease in safe hands: An education programme for nurses in primary care in Norway. *Nurse Educ Pract*. 2015;15(4):271–276.
48. Helsedirektoratet. *Kols. Nasjonal faglig retningslinje og veileder for forebygging, diagnostisering og oppfølging*. Oslo: Helsedirektoratet; 2012. Norwegian.
49. Riksrevisjonen. The Office of the Auditor General’s investigation of resource utilisation and quality in the health service following the introduction of the Coordination Reform. Document 3:5 (2015–2016). Oslo: Office of the Auditor General of Norway; 2016. Norwegian.
50. Riksrevisjonen. The Office of the Auditor General’s investigation of public health work. Document 3:11 (2014–2015). Oslo: Office of the Auditor General of Norway; 2015. Norwegian.
51. Lindahl AK. The Norwegian Health Care System; 2015. Available from: https://www.commonwealthfund.org/sites/default/files/documents/___media_files_publications_fund_report_2016_jan_1857_mos-sialos_intl_profiles_2015_v7.pdf. Accessed January 24, 2018.
52. Miller MR, Hankinson J, Brusasco V, et al. Standardisation of spirometry. *Eur Respir J*. 2005;26(2):319–338.
53. GOLD. Global Initiative for Chronic Obstructive Lung Disease, GOLD Spirometry Guide; 2010. Available from: <https://goldcopd.org/gold-spirometry-guide/>. Accessed April 27, 2016.
54. Johannessen A, Lehmann S, Omenaas ER, Eide GE, Bakke PS, Gulsvik A. Post-bronchodilator spirometry reference values in adults and implications for disease management. *Am J Respir Crit Care Med*. 2006;173(12):1316–1325.
55. Fletcher CM. Standardised questionnaire on respiratory symptoms: a statement prepared and approved by the MRC Committee on the Aetiology of Chronic Bronchitis. *Br Med J*. 1960;2:1665.

56. Bestall JC, Paul EA, Garrod R, Garnham R, Jones PW, Wedzicha JA. Usefulness of the Medical Research Council (MRC) dyspnoea scale as a measure of disability in patients with chronic obstructive pulmonary disease. *Thorax*. 1999;54(7):581–586.
57. Stenton C. The MRC breathlessness scale. *Occup Med*. 2008;58(3):226–227.
58. Mahler DA, Wells CK. Evaluation of clinical methods for rating dyspnea. *Chest*. 1988;93(3):580–586.
59. Jones PW, Harding G, Berry P, Wiklund I, Chen WH, Kline Leidy N. Development and first validation of the COPD Assessment Test. *Eur Respir J*. 2009;34(3):648–654.
60. Jones PW, Trusselle G, Dal Negro RW, et al. Properties of the COPD assessment test in a cross-sectional European study. *Eur Respir J*. 2011;38(1):29–35.
61. Karloh M, Fleig Mayer A, Maurici R, Pizzichini MMM, Jones PW, Pizzichini E. The COPD Assessment Test: What do we know so far?: A systematic review and meta-analysis about clinical outcomes prediction and classification of patients into GOLD stages. *Chest*. 2016;149(2):413–425.
62. Dodd JW, Hogg L, Nolan J, et al. The COPD assessment test (CAT): response to pulmonary rehabilitation. A multicentre, prospective study. *Thorax*. 2011;66(5):425–429.
63. Jones PW, Harding G, Wiklund I, et al. Tests of the responsiveness of the COPD assessment test following acute exacerbation and pulmonary rehabilitation. *Chest*. 2012;142(1):134–140.
64. Wahl AK, Osborne RH, Langeland E, et al. Making robust decisions about the impact of health education programs: Psychometric evaluation of the Health Education Impact Questionnaire (heiQ) in diverse patient groups in Norway. *Patient Educ Couns*. 2016;99(10):1733–1738.
65. Elsworth GR, Nolte S, Osborne RH. Factor structure and measurement invariance of the Health Education Impact Questionnaire: Does the subjectivity of the response perspective threaten the contextual validity of inferences? *SAGE Open Med*. 2015 May. <http://journals.sagepub.com/doi/abs/10.1177/2050312115585041>. Accessed April 2, 2018.
66. Nolte S, Elsworth GR, Osborne RH. Absence of social desirability bias in the evaluation of chronic disease self-management interventions. *Health Qual Life Outcomes*. 2013;11(1):114.
67. Elsworth GR, Osborne RH. Percentile ranks and benchmark estimates of change for the Health Education Impact Questionnaire: Normative data from an Australian sample. *SAGE Open Med*. 2017 Mar 23;5. <https://www.ncbi.nlm.nih.gov/pubmed/28560039>. Accessed June 1, 2018.
68. Schuler M, Musekamp G, Bengel J, Nolte S, Osborne RH, Faller H. Measurement invariance across chronic conditions: a systematic review and an empirical investigation of the Health Education Impact Questionnaire (heiQ™). *Health Qual Life Outcomes*. 2014;12:56.
69. Bélanger A, Hudon C, Fortin M, Amirall J, Bouhali T, Chouinard M-C. Validation of a French-language version of the health education impact questionnaire (heiQ) among chronic disease patients seen in primary care: a cross-sectional study. *Health Qual Life Outcomes*. 2015;13(1):1–9.
70. Schwarzer R. General Self-Efficacy Scale (GSE). [homepage on the Internet]. [updated 2012, February 12]. Available from: <http://userpage.fu-berlin.de/~health/selfscal.htm>. Accessed March 20, 2017.
71. Schwarzer R. Everything you want to know about the General Self-Efficacy Scale but were afraid to ask; 2014. Available from: http://userpage.fu-berlin.de/~health/faq_gse.pdf. Accessed March 20, 2017.
72. Schwarzer R, Jerusalem M. Causal and control beliefs. In: Weinman J, Wright S, Johnston M, editors. *Measures in Health Psychology: A User's Portfolio*. Windsor: NFER-NELSON; 1995:35–37.
73. Andenæs R, Bentsen SB, Hvinden K, Fagermoen MS, Lerdal A. The relationships of self-efficacy, physical activity, and paid work to health-related quality of life among patients with chronic obstructive pulmonary disease (COPD). *J Multidiscip Healthc*. 2014;7:239–247.
74. Bonsaksen T, Lerdal A, Fagermoen MS. Factors associated with self-efficacy in persons with chronic illness. *Scand J Psychol*. 2012;53(4):333–339.
75. Leganger A, Kraft P, Røysamb E, Røysamb E. Perceived self-efficacy in health behaviour research: Conceptualisation, measurement and correlates. *Psychol Health*. 2000;15(1):51–69.
76. Eriksson M, Lindström B. Validity of Antonovsky's sense of coherence scale: a systematic review. *J Epidemiol Community Health*. 2005;59(6):460–466.
77. Pallant JF, Lae L. Sense of coherence, well-being, coping and personality factors: further evaluation of the sense of coherence scale. *Pers Individ Dif*. 2002;33(1):39–48.
78. Schnyder U, Büchi S, Sensky T, Klaghofer R. Antonovsky's sense of coherence: trait or state? *Psychother Psychosom*. 2000;69(6):296–302.
79. Feldt T, Lintula H, Suominen S, Koskenvuo M, Vahtera J, Kivimäki M. Structural validity and temporal stability of the 13-item sense of coherence scale: prospective evidence from the population-based HeSSup study. *Qual Life Res*. 2007;16(3):483–493.
80. Antonovsky A. The structure and properties of the sense of coherence scale. *Soc Sci Med*. 1993;36(6):725–733.
81. Delgado C. Sense of coherence, spirituality, stress and quality of life in chronic illness. *J Nurs Scholarsh*. 2007;39(3):229–234.
82. Lundman B, Forsberg KA, Jonsén E, et al. Sense of coherence (SOC) related to health and mortality among the very old: the Umeå 85+ study. *Arch Gerontol Geriatr*. 2010;51(3):329–332.
83. van Buuren S. *Flexible Imputation of Missing Data*. New York: Taylor and Francis; 2012.
84. R Core Team. A language for statistical computing; 2017. Available from: <https://www.r-project.org/>. Accessed April 17, 2018.
85. van Buuren S, Groothuis-Oudshoorn K. Mice: Multivariate Imputation by Chained Equations in R. *J Stat Softw*. 2011;45(3):1–67.
86. Ranganathan P, Pramesh CS, Aggarwal R. Common pitfalls in statistical analysis: Intention-to-treat versus per-protocol analysis. *Perspect Clin Res*. 2016;7(3):144–146.
87. Gupta SK. Intention-to-treat concept: A review. *Perspect Clin Res*. 2011;2(3):109–112.
88. Cohen J. *Statistical Power Analysis for the Behavioural Sciences*. 2nd ed. Hillsdale, NJ: Lawrence Erlbaum; 1988.
89. Langeland E, Vinje HF. The application of salutogenesis in mental healthcare settings. In: Mittelmark MB, Sagy S, Eriksson M, editors. *The Handbook of Salutogenesis*. Cham: Springer International Publishing; 2017:299–305.
90. Bonini M, Usmani OS. The importance of inhaler devices in the treatment of COPD. *COPD Res and Practice*; 2015. Available from: <https://copdrp.biomedcentral.com/articles/10.1186/s40749-015-0011-0>. Accessed June 18, 2018.
91. Crompton GK, Barnes PJ, Broeders M, et al. The need to improve inhalation technique in Europe: a report from the Aerosol Drug Management Improvement Team. *Respir Med*. 2006;100(9):1479–1494.
92. Melani AS, Bonavia M, Cilenti V, et al. Inhaler mishandling remains common in real life and is associated with reduced disease control. *Respir Med*. 2011;105(6):930–938.
93. Klijn SL, Hiligsmann M, Evers S, Román-Rodríguez M, van der Molen T, van Boven JFM. Effectiveness and success factors of educational inhaler technique interventions in asthma & COPD patients: a systematic review. *NPJ Prim Care Respir Med*. 2017;27(1):24.
94. Pothirat C, Chaiwong W, Phetsuk N, Pisalthanapuna S, Chetsadaphan N, Choomuang W. Evaluating inhaler use technique in COPD patients. *Int J Chron Obstruct Pulmon Dis*. 2015;10:1291–1298.
95. Sanchis J, Corrigan C, Levy ML, Viejo JL, ADMIT Group. Inhaler devices – from theory to practice. *Respir Med*. 2013;107(4):495–502.
96. Francis KL, Matthews BL, Van Mechelen W, Bennell KL, Osborne RH. Effectiveness of a community-based osteoporosis education and self-management course: a wait list controlled trial. *Osteoporos Int*. 2009;20(9):1563–1570.
97. Fortin M, Chouinard MC, Dubois MF, et al. Integration of chronic disease prevention and management services into primary care: a pragmatic randomized controlled trial (PR1MaC). *CMAJ Open*. 2016;4(4):E588–E598.

98. Crotty M, Prendergast J, Battersby MW, et al. Self-management and peer support among people with arthritis on a hospital joint replacement waiting list: a randomised controlled trial. *Osteoarthritis Cartilage*. 2009;17(11):1428–1433.
99. Corhay JL, Dang DN, Van Cauwenberge H, Louis R. Pulmonary rehabilitation and COPD: providing patients a good environment for optimizing therapy. *Int J Chron Obstruct Pulmon Dis*. 2014;9:27–39.
100. Bos-Touwen I, Schuurmans M, Monnikhof EM, et al. Patient and disease characteristics associated with activation for self-management in patients with diabetes, chronic obstructive pulmonary disease, chronic heart failure and chronic renal disease: a cross-sectional survey study. *PLoS One*. 2015;10(5):e0126400–e0126415.
101. Sridhar M, Taylor R, Dawson S, Roberts NJ, Partridge MR. A nurse led intermediate care package in patients who have been hospitalised with an acute exacerbation of chronic obstructive pulmonary disease. *Thorax*. 2008;63(3):194–200.
102. Karanicolas PJ, Farrokhyar F, Bhandari M. Blinding: Who, what, when, why, how? *Can J Surg*. 2010;53(5):345–348.
103. Cunningham JA, Kypri K, Mccambridge J. Exploratory randomized controlled trial evaluating the impact of a waiting list control design. *BMC Med Res Methodol*. 2013;13:150.
104. Ackerman IN, Buchbinder R, Osborne RH. Challenges in evaluating an Arthritis Self-Management Program for people with hip and knee osteoarthritis in real-world clinical settings. *J Rheumatol*. 2012;39(5):1047–1055.

International Journal of COPD

Publish your work in this journal

The International Journal of COPD is an international, peer-reviewed journal of therapeutics and pharmacology focusing on concise rapid reporting of clinical studies and reviews in COPD. Special focus is given to the pathophysiological processes underlying the disease, intervention programs, patient focused education, and self management protocols.

Submit your manuscript here: <http://www.dovepress.com/international-journal-of-chronic-obstructive-pulmonary-disease-journal>

Dovepress

This journal is indexed on PubMed Central, MedLine and CAS. The manuscript management system is completely online and includes a very quick and fair peer-review system, which is all easy to use. Visit <http://www.dovepress.com/testimonials.php> to read real quotes from published authors.