

RESEARCH ARTICLE

Using the RIGHT statement to evaluate the reporting quality of clinical practice guidelines in traditional Chinese medicine

Xia Yun^{1,2}, Chen Yaolong³, Zeng Zhao¹, Zhou Qi³, Wang Yangyang², Xie Runshen², Xie Xiuli², Li Hui^{2*}

1 Guangzhou Chinese Medical University, Guangzhou, Guangdong, China, **2** Guangdong Province Hospital of Chinese Medicine, Guangzhou, Guangdong, China, **3** Lanzhou University, Lanzhou, Gansu, China

☯ These authors contributed equally to this work.

* lihuitcm@126.com



Abstract

Objective

To evaluate the reporting quality of clinical practice guidelines (CPGs) in traditional Chinese medicine (TCM).

Methods

A systematic search was undertaken to extract CPGs for TCM. The RIGHT (Reporting Items for practice Guidelines in Healthcare) statement was used to calculate scores for the reporting quality in terms of domains and items, followed by a subgroup analysis of the results and determination of the correlation between the RIGHT and AGREE II (Appraisal of Guidelines for Research and Evaluation II) scores.

Results

Overall, 539 TCM CPGs were included. (1) The mean scores (Med, IQR) for each RIGHT domain were as follows: basic information (4, 1), background (3, 2), evidence (0, 0), recommendations (2, 2), review and quality assurance (0, 0), funding and declaration and management of interests (0, 0.5), and other information (0, 0). (2) The items with a low reporting rate (<10%) included 2, 5, 8b, 9a, 10a, 10b, 11a, 11b, 14a, 14b, 14c, 16, 17, 19b, 20, 21, and 22, and those with a high reporting rate (> 90%) included 1a, 1b, 1c, 7b, 13a, and 13b. (3) In recent years, the reporting quality of TCM CPGs has improved, and there was a significant difference among the organizations ($P = 0.000$), where that of the updated versions was greater than that of the historical versions ($P = 0.047$). (4) The RIGHT and AGREE II scores were positively correlated ($P = 0.014$).

Conclusions

At present, although the reporting quality of TCM CPGs is improving, the overall quality remains suboptimal. Guideline developers should strictly follow the evidence-based process

OPEN ACCESS

Citation: Yun X, Yaolong C, Zhao Z, Qi Z, Yangyang W, Runshen X, et al. (2018) Using the RIGHT statement to evaluate the reporting quality of clinical practice guidelines in traditional Chinese medicine. *PLoS ONE* 13(11): e0207580. <https://doi.org/10.1371/journal.pone.0207580>

Editor: Karen Anne Grimmer, Flinders University, AUSTRALIA

Received: February 10, 2018

Accepted: November 2, 2018

Published: November 16, 2018

Copyright: © 2018 Yun et al. This is an open access article distributed under the terms of the [Creative Commons Attribution License](https://creativecommons.org/licenses/by/4.0/), which permits unrestricted use, distribution, and reproduction in any medium, provided the original author and source are credited.

Data Availability Statement: All relevant data are within the paper and its Supporting Information files.

Funding: The study was supported by the Science and Technology Planning Project of Guangdong Province, China (2017A030303071) and The Specific Research Fund for TCM Science and Technology of Guangdong Province Hospital of Chinese Medicine (YN2015MS22). The funders had no role in study design, data collection and

analysis, decision to publish, or preparation of the manuscript.

Competing interests: The authors have declared that no competing interests exist.

of developing guidelines and should follow the RIGHT statement to produce a standardized report when writing guidelines.

Introduction

Clinical practice guidelines (CPGs) are statements that include recommendations that are intended to optimize patient care and are informed by a systematic review of evidence and an assessment of the benefits and harms of alternative care options[1]. Guidelines are an important basis on which medical workers make clinical decisions, and CPGs are the criteria for standardizing diagnosis and treatment. With the development of evidence-based medicine, the number of guidelines is increasing, and the reporting standards are very important. On the one hand, the standardized reporting of guidelines can improve the science and transparency and can help control the risk of bias in the guideline development process. On the other hand, standardized reporting is crucial for promoting the reading and utilization of the guidelines. Standardized guidelines will help users more quickly and accurately grasp the specific content and make comprehensive and objective judgments based on the guidelines.

In November 2016, “A Reporting Tool for Practice Guidelines in Health Care: The RIGHT Statement”(checklist is presented in [S1 Appendix](#))[2], was published in the *Annals of Internal Medicine*. The international multidisciplinary team of RIGHT (Reporting Items for practice Guidelines in Healthcare) joined more than 20 experts from 11 countries, including China, the United States, Canada, the United Kingdom and Germany, and from seven international organizations, including the WHO (World Health Organization), EQUATOR (Enhancing the QUALITY and Transparency Of health Research), GIN (Guidelines International Network), The Cochrane Library, GRADE (The Grading of Recommendations Assessment, Development and Evaluation) and AGREE. This research lasted 3 years to develop in strict accordance with the international health research reporting standards, based on the WHO guidelines, an analysis and summary of the COGS (Conference on Guideline Standardization) and AGREE II items. The RIGHT statement contains 7 major domains and 22 items. It is the first international reporting standard to be formally registered on the EQUATOR network and is currently the only reporting standard applicable to CPGs, public health guidelines and health policy guidelines.

Traditional Chinese medicine (TCM), as a representative of traditional medicine, plays an indispensable role in the Chinese healthcare system[3] and has a widespread impact on the world[4]. At present, it is of great significance to evaluate the reporting quality of TCM CPGs. In this study, we utilized the RIGHT statement to evaluate the currently published TCM CPGs. We also aimed to determine ways to improve the reporting quality and discuss the applicability of RIGHT to TCM guidelines.

Methods

We used systematic review methods in this study.

Search strategy

We searched the following databases: SinoMed, China National Knowledge Infrastructure (CNKI), Wanfang and PubMed, and the guideline clearinghouses of National Guideline Clearinghouse (NGC), Guidelines International Network (GIN), the National Institute for Health and Care Excellence (NICE), and Medlive. We searched Google, Amazon, and Dangdang to

obtain guidelines published in books, and we searched the supplemental references. The deadline was July 2017, and the language restrictions were Chinese or English. A search strategy using the keywords “consensus”, “statement”, “recommendation”, “guideline”, “Chinese medicine”, “Chinese herbal”, and “TCM” was employed (full search strategies are presented in [S2 Appendix](#)).

Inclusion and exclusion criteria

The inclusion criteria were reports on Chinese medicinal compounds or recommendations for proprietary Chinese medicine interventions. The exclusion criteria were as follows: (1) integrative medicine, acupuncture and moxibustion guidelines; (2) other supplementary alternative medicine guidelines; (3) modern medicine guidelines; and (4) repeating guidelines.

Evaluation of reporting quality

Eight trained researchers (TYJ, WZJ, XYJ, CG, DYL, HJH, ZQ, XY) formed four groups, each of which evaluated part of the guidelines. The researchers compiled a data extraction form according to the RIGHT statement, extracted data independently in Excel and analyzed the reporting quality according to 22 items (35 subitems in total). We combined the RIGHT items in accordance with a research paper by one of the RIGHT statement authors[5]. After a group discussion, we decided to make a judgment of “reported,” “partially reported” and “unreported,” with corresponding scores of 1 point, 0.5 point or 0 points. All evaluation processes were conducted independently, and if there was a disagreement, it was resolved by reaching a consensus. Finally, we summarized the results, analyzed the reporting scores or rates in each domain and item and calculated the reporting quality by subgroup analysis.

Statistical analysis

We conducted a descriptive statistical analysis to calculate the score and reporting rate. The Mann-Whitney test was used to compare two samples, and the Kruskal-Wallis test was used to compare multiple samples; a value of $P < 0.05$ denoted statistical significance. The intraclass correlation coefficient (ICC) was used to test the interrater reliability among the reviewers.

Quality control

Before the evaluation, eight researchers studied the RIGHT statement together to ensure that each researcher had a consistent understanding. We conducted two pretests (12 TCM guidelines randomly selected by computer) and calculated the ICC using SPSS 19.0. The results were as follows: ICC1 = 0.962, 95% CI: [0.953, 0.969]; ICC2 = 0.973, 95% CI: [0.967, 0.978].

Results

Overall, 539 TCM CPGs were included. A diagram of the screening process is shown in [Fig 1](#).

Guideline characteristics

The 539 TCM CPGs covered a range of topics. The guideline characteristics are shown in [Table 1](#).

Domain scores

The score distributions of the domains are shown in [Fig 2](#). We divided the scores into four levels: high ($\geq 75\%$), middle (50–75%), low (25–50%), and very low ($\leq 25\%$). The results showed

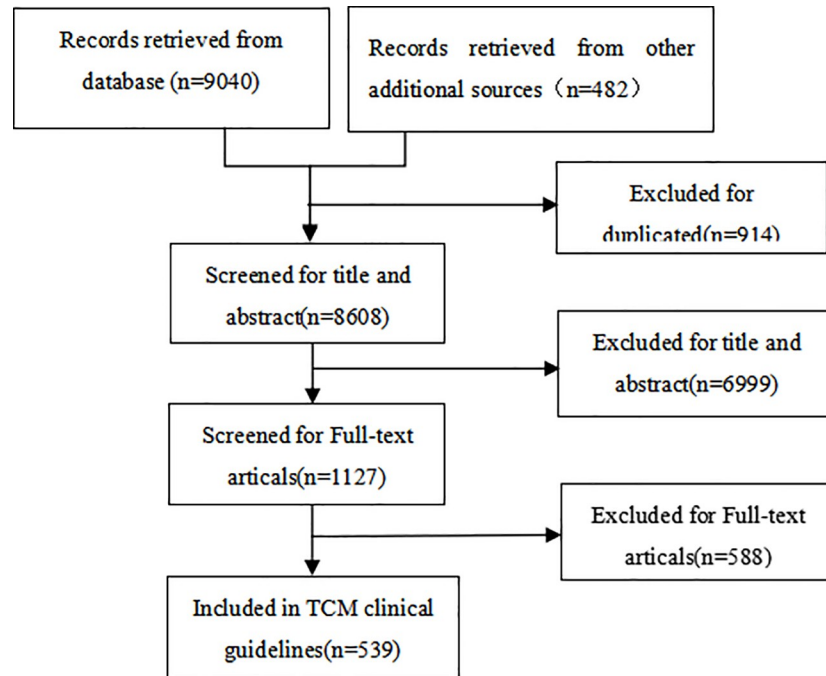


Fig 1. Flow diagram of the selection process for the studies.

<https://doi.org/10.1371/journal.pone.0207580.g001>

that (1) the domain 1 (basic information) scores were higher than the other scores and were mainly distributed in the middle levels. (2) The domain 2 (background) scores were mainly distributed in the very low and middle levels. (3) In domain 4 (recommendations), the scores

Table 1. Characteristics of 539 TCM CPGs.

Categories	n (%)
Publication	
Journal	57 (10.58%)
Book	482 (89.42%)
Type of disease	
Modern medical disease	344 (63.82%)
TCM disease	193 (35.81%)
Modern medical disease also TCM disease	1 (0.19%)
TCM syndromes	1 (0.19%)
Organization	
China Association of Chinese Medicine (CACM)	457 (84.79%)
World Health Organization's Western Pacific Organization (WHO WPRO)	28 (5.19%)
CACM chapter	25 (4.63%)
Hospitals	17 (3.15%)
Government	4 (0.74%)
Universities	2 (0.37%)
Other societies	6 (1.11%)
Type of version	
Historical	8 (1.48%)
Updated	8 (1.48%)

<https://doi.org/10.1371/journal.pone.0207580.t001>

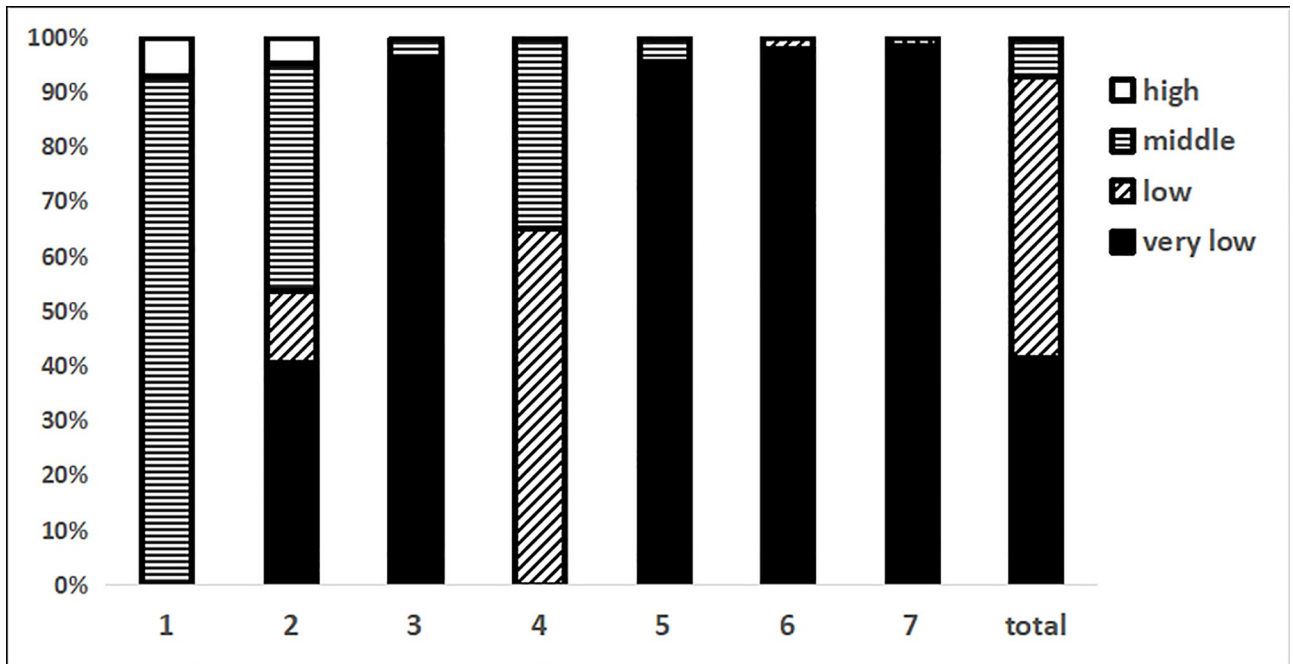


Fig 2. The distribution of domain scores.

<https://doi.org/10.1371/journal.pone.0207580.g002>

were all in the range of the low and middle levels. (4) The scores of domains 3 (evidence), 5 (review and quality assurance), 6 (funding and declaration and management of interests), and 7 (other information) were distributed in the very low level range. (5) Overall, 92.9% of the guidelines were distributed between the very low and low levels, with only 7.1% having middle level scores; no guidelines had a score at the high levels.

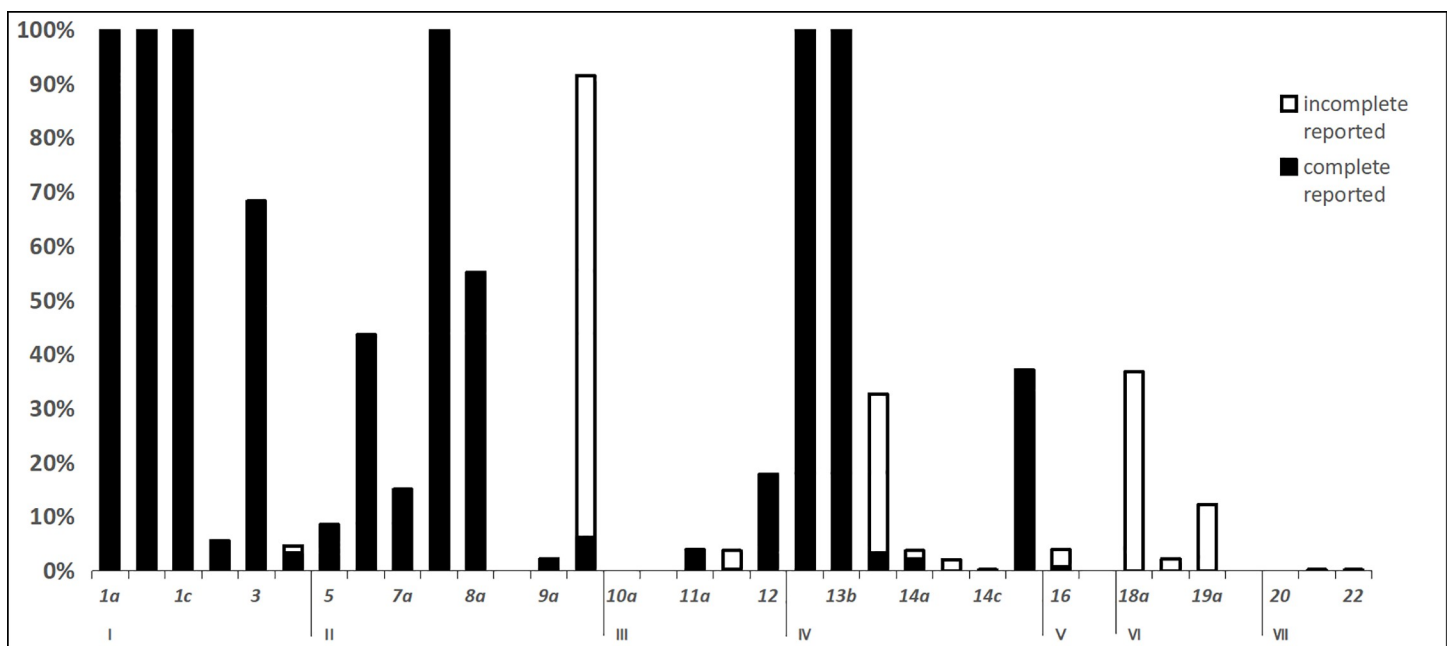


Fig 3. The reporting rates of items.

<https://doi.org/10.1371/journal.pone.0207580.g003>

Table 2. RIGHT domain scores of different subgroups.

Subgroups	The domain scores (Med, IQR)							
	Basic information	Background	Evidence	Recommendations	Review and quality assurance	Funding and declaration and management of interests	Other information	Total scores
Organization								
CACM(N = 457)	4.00, 1.00	3.00, 2.00	0.00, 0.00	2.00, 2.00	0.00, 0.00	0.00, 0.50	0.00, 0.00	9.00, 5.50
WHO WPRO(N = 28)	5.50, 0.38	6.50, 0.75	1.75, 1.50	4.50, 0.38	0.00, 1.00	0.50, 0.50	0.00, 1.00	19.50, 1.00
CACM Chapter (N = 25)	4.00, 0.00	4.50, 2.00	0.00, 1.00	2.00, 1.00	0.00, 0.00	0.00, 0.50	0.00, 0.00	11.50, 5.00
Hospital(N = 17)	4.00, 0.50	5.50, 0.50	1.00, 0.75	5.00, 1.50	0.00, 0.50	1.50, 1.00	0.00, 0.00	18.00, 4.00
Others(N = 6)	4.00, 1.63	3.75, 1.50	0.00, 0.25	3.00, 0.50	0.00, 0.00	0.00, 1.00	0.00, 0.00	11.50, 4.25
University(N = 2)	4.00, 0.00	4.00, 0.00	1.25, 0.00	3.00, 0.00	0.00, 0.00	0.75, 0.00	0.00, 0.00	13.00, 0.00
Government(N = 4)	3.00, 0.00	2.00, 1.88	0.00, 0.00	2.00, 0.75	0.00, 0.00	0.00, 0.00	0.00, 0.00	7.50, 2.13
P-value	<0.001	<0.001	<0.001	<0.001	<0.001	<0.001	<0.001	<0.001
Version								
Historical(N = 8)	4.00, 0.75	4.00, 1.50	1.00, 1.00	4.00, 0.75	0.00, 0.00	1.00, 0.88	0.00, 0.00	14.00, 4.88
Updated(N = 8)	4.00, 0.00	5.50, 1.50	1.00, 1.50	5.00, 0.75	1.00, 0.75	1.50, 0.75	0.00, 0.00	18.00, 6.75
P-value	0.440	0.007	0.069	0.015	0.003	0.021	1.000	0.047
Year (in journal)								
2003-2009(N = 10)	4.00, 0.25	2.75, 1.63	0.00, 0.00	2.00, 0.00	0.00, 0.00	0.00, 0.13	0.00, 0.00	8.75, 2.00
2010-2015(N = 31)	4.00, 1.00	4.50, 2.00	0.00, 1.00	3.00, 1.00	0.00, 0.00	0.50, 0.50	0.00, 0.00	12.50, 4.50
2016-2017(N = 16)	4.00, 0.38	5.50, 0.75	1.00, 1.13	5.00, 1.75	1.00, 1.00	1.50, 1.38	0.00, 0.00	18.00, 4.25
P-value	0.852	<0.001	<0.001	<0.001	<0.001	<0.001	0.657	<0.001

<https://doi.org/10.1371/journal.pone.0207580.t002>

The reporting rate of items

The reporting rates of the items are shown in Fig 3. The results showed that the items with a low reporting rate (<10%) were 2, 5, 8b, 9a, 10a, 10b, 11a, 11b, 14a, 14b, 14c, 16, 17, 19b, 20, 21, and 22 and that the high-reporting-rate (> 90%) items were 1a, 1b, 1c, 7b, 13a, and 13b. For the low to high reporting rates, (1) the reporting rates of items 8b, 10a, 10b, 17, 19b, and 20 were all 0%, indicating that there was no guideline to report the above items; these items were mainly distributed among the implementation, PICO questions, conflict of interest, quality assurance and accessibility of the guidelines. (2) The reporting rates of items 14c, 21 and 22 were 0.19%, indicating that only 1 guideline reported the items; these items were mainly distributed among the fairness and feasibility of the recommendations, acceptability, limitations and research gaps. (3) The reporting rates for items 2, 5, 9a, 11a, 11b, 14a, 14b and 16 were also below 10%, and these items mainly concerned the executive summary, epidemiology, group members, evidence, patient preferences and values, cost-effectiveness, and external review. (4) The reporting rates of 9b, 13c, 18a, and 19a were > 10%, but the full rates were all less than 5%, and these items were mainly distributed among the strength of recommendation, quality

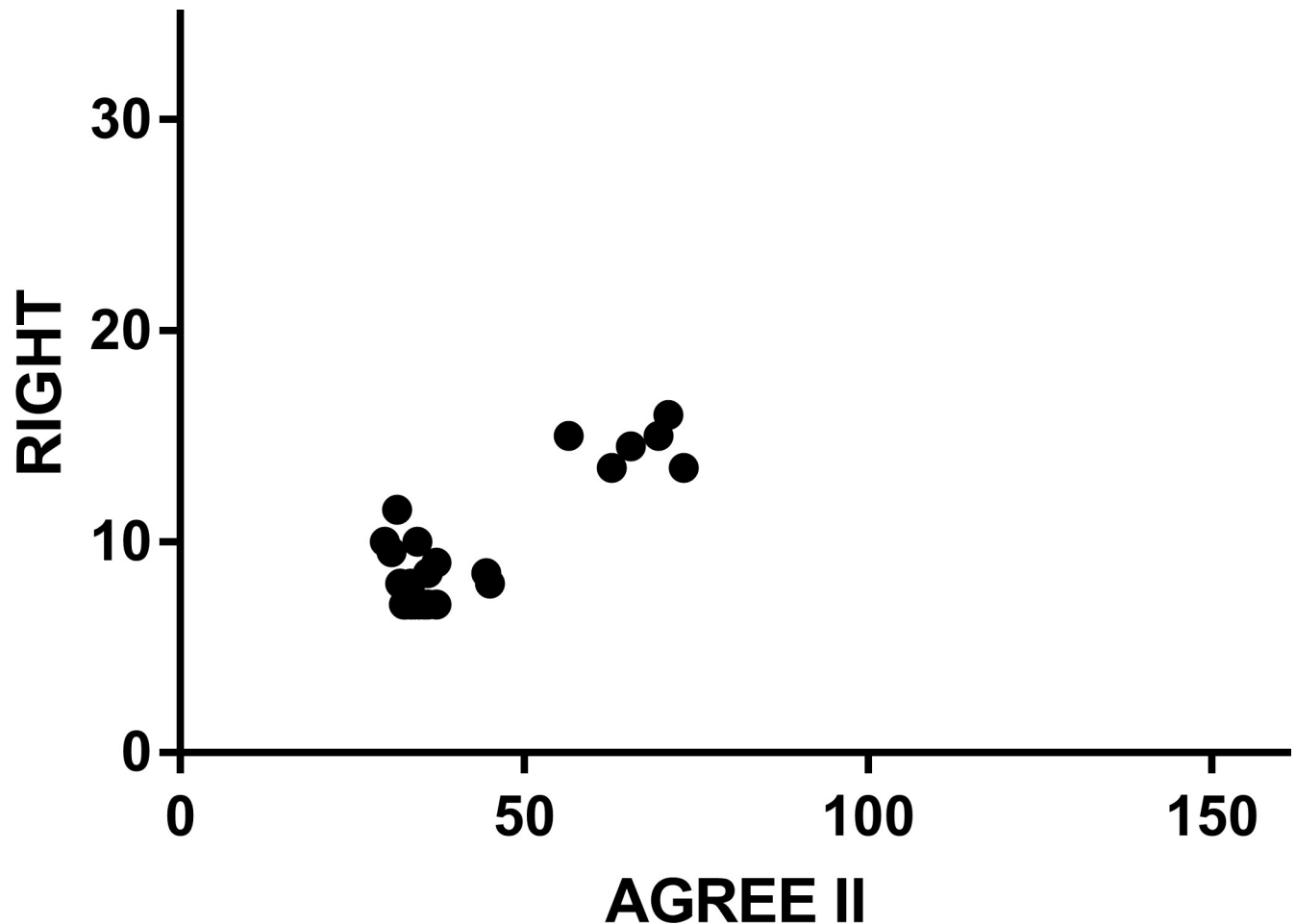


Fig 4. Scatter plot for the correlation between RIGHT and AGREE II scores.

<https://doi.org/10.1371/journal.pone.0207580.g004>

of evidence, and funding. For example, 9b had a reporting rate of 97.59%; thus, most of the guidelines reported the personal information of members, but job, work and other information were not completely reported. (5) For items 3, 8a, and 15, the reporting rates were 68.27%, 55.10%, and 37.11%, respectively, and these items concerned abbreviations, purpose, the decision-making process and methodology. (6) The best reporting rate was observed for items 1a, 1b, 1c, 7b, 13a, and 13b, at 100%, and these items were mainly distributed among basic information, the subgroups and providing precise and actionable recommendations.

Subgroup analysis

According to the different stratified criteria (including the year of publication, organization, and type of version used to evaluate the reporting quality), the results (Table 2) showed the following: (1) according to the year of journal publication, the reporting quality score of each year was divided into three levels: 2003–2009, 2010–2015, and 2016–2017. The reporting quality of the guidelines increased over time. However, domains 1 and 7 did not increase, and these were the basic information and other information domains. In addition, we found that the guidelines published in 2016–2017 were all based on evidence-based methods. (2) There was a significant difference in the reporting quality among the organizations ($P < 0.001$).

Among them, the scores for the WHO, WPRO and hospitals were higher than those for other organizations. (3) Regarding the type of version, only 8 guidelines were updates of historical guidelines. The Mann-Whitney test ($P = 0.047$) showed that the reporting quality of an updated version was higher than that of the corresponding historical version. The scores with the greatest increases were in domains 2, 4, 5, and 6, which were member selection, recommendations, review and dissemination. The scores of domains 1, 3, and 7 did not increase, and these domains concerned basic information, evidence, accessibility, limitations and research gaps.

Comparison with the AGREE II score

AGREE II, a methodology assessment tool for guidelines, was published by AGREE Research Teams and focuses on the methodological quality of guidelines in the development process. RIGHT, a reporting quality assessment tool for guidelines, was published by the RIGHT Group and focuses on the reporting quality of the guideline's content. L Yao et al.[6] used AGREE II to evaluate the CPGs of TCM. To determine the relationship between the reporting quality and the methodological quality, we obtained the original data from the authors and analyzed the correlation between the AGREE II scores and the RIGHT scores of 43 TCM guidelines. The total score obtained with RIGHT was 35. The total score obtained with AGREE II was 161. The Spearman correlation analysis using the SPSS software showed that $R = 0.371$, 95% CI [0.070, 0.610], $P = 0.014$ (the scattergram is shown in Fig 4), and the results showed that there was a positive correlation between the AGREE II and RIGHT scores.

Discussion

Over the past 25 years, with the development of evidence-based medicine, guidelines have become a powerful tool for establishing the best dataset of health evidence[7]. The number of TCM CPGs has also increased[8], and studies have shown that TCM CPGs still have some problems with quality and applicability[9]. We collected as much literature as we could, and from the results, we found the following problems. First, for the guideline type, TCM CPGs pay more attention to the diagnosis and treatment of diseases and mention other aspects, such as disease prevention or patient version guidelines, less frequently. Second, regarding different organizations, there is a certain reporting quality gap between the guidelines published by China and those published by international organizations. Third, Low-quality reported items have the following aspects: (1) These items lack a summary of the recommendations, which can help users grasp the main contents of the guideline quickly and accurately, and this may be related to the limited length of the report in journals; thus, the accessibility of such guidelines is important. (2) There is a lack of epidemiology, especially for TCM diseases. (3) There is incomplete reporting of the information on group members, including their personal information, work, contribution and selection method. (4) There is a lack of description of the PICO question, a lack of search strategies, screening criteria and quality assessment, and less consideration of patient preferences and values and cost-effectiveness. (5) There is a lack in reporting conflicts of interest, including a detailed description of the conflict type, the stage, the funder's role, assessment and accessibility[10]. (6) There is a lack of reporting on dissemination, implementation, updating, accessibility and limitations.

The ultimate goal of the guidelines is to guide clinical practice. A study has shown that low-quality guidelines may cause harm to patients, waste medical resources and affect medical decisions[11]. Through a reporting tool, we can present the development process more comprehensively and accurately. We analyzed that the current low quality of TCM CPGs may be due to the following reasons. (1) The lack of a developed method. Currently, many

organizations have released the method that they used to develop guidelines, such as NICE and the WHO. Guideline developers may not yet have adopted international methods, with most guidelines based only on expert consensus[12]. (2) Unclear PICO questions. This may be related to the specificity of TCM; therefore, how to combine the PICO model with the TCM guidelines is a question worth exploring. (3) A lack of evidence based on systematic reviews. In 2011, the Institute of Medicine (IOM) clearly defined “CPGs as statements that include recommendations that are intended to optimize patient care and are informed by a systematic review of evidence and an assessment of the benefits and harm of alternative care options”[1]. Only 3.90% of the guidelines reported the use of systematic reviews as a source of evidence in the development process, which may be related to the lack of high-quality research. (4) A lack of evidence quality and recommendation strength. Medical practice should be based on the best available evidence and should make a clear and strong recommendation by considering different benefits and harm, patient preferences and values, cost-effectiveness, feasibility, acceptability, and fairness[13]. Most of the guidelines did not report these aspects because there is currently no widespread classification system for evidence quality and recommendations in TCM. (5) It is often difficult to obtain the full text, appendix and related documents concerning the guidelines.

To improve the reporting quality of TCM CPGs, we propose the following suggestions. (1) Strengthen the dissemination of the RIGHT statement, introduce the RIGHT statement into medical journals, and standardize the writing of guidelines. (2) Strengthen the methodological training of developers, recommend that guideline developers use evidence-based methods. change the members from clinicians to multidisciplinary teams including methodologists. (3) Pay more attention to the patient’s values and preferences, consider the cost-effectiveness of the development process to benefit and reflect the TCM specialty, strengthen the management of conflicts of interest. (4) Improve the implementation of guidelines. (5) Establish a TCM guideline clearinghouse to improve the accessibility of the guidelines. (6) Regularly update the guidelines and report the update mechanism.

Conclusion

Through the analysis of 539 TCM clinical guidelines, our study showed that the reporting quality for various domains and items is different. Although the reporting quality of TCM CPGs is improving, the overall quality remains suboptimal. There is a close relationship between the reporting quality and the methodological quality of the guidelines. Guideline developers should follow the RIGHT statement to produce a standardized report when writing guidelines.

Limitations

There are some limitations to our study. Only the TCM guidelines published in books and journals were searched, so guidelines published elsewhere may have been omitted. This study only aimed to evaluate TCM guidelines; integrative medicine, acupuncture and other traditional therapies were not included. For the guidelines published in journals, due to space constraints, it may have been difficult to show all the methodological information about the process.

Suggestions for future research

TCM is one of the oldest medical systems in the world. In TCM, the understanding of disease differs from that used in modern medicine. TCM has the unique treatment principles of “treatment based on syndrome differentiation” and the “concept of holism”[14]. TCM guidelines

also have their own distinctive features and complex patterns; in the case of diseases that have been classified, there is also a wide variety of situations, such as using Chinese medicine for modern diseases, using Chinese medicine for TCM diseases, and using Chinese medicine for TCM syndromes. We also had some difficulty in using the RIGHT tool, as TCM has its own unique historical background. In addition, regarding epidemiology, statistics are difficult to obtain for TCM diseases. The recommendations lack content concerning theory, principles, formulas, and medicines[15]. In terms of evidence, there is no uniform reporting standard for grading the evidence quality of ancient literature. Because of these aspects, the existing RIGHT statement has not been widely applied. A TCM CPG should be more effectively combined with foreign methods while maintaining its own characteristics, and a reporting standard applicable to TCM guidelines should be established and is worth further exploration.

Supporting information

S1 File. Original data-information of guidelines,score result.

(SAV)

S2 File. PRISMA 2009 checklist.

(DOC)

S1 Appendix.

(DOCX)

S2 Appendix.

(DOCX)

Acknowledgments

We would like to thank Gang Che, Yali Du, Jianghua He, Yajing Tong, Zijun Wang, and Yujie Xiao for their help in the evaluations.

Author Contributions

Conceptualization: Xia Yun, Chen Yaolong, Li Hui.

Data curation: Xia Yun, Zhou Qi.

Formal analysis: Xia Yun.

Investigation: Xia Yun, Zeng Zhao.

Methodology: Wang Yangyang, Xie Runshen, Xie Xiuli.

Supervision: Zeng Zhao.

Visualization: Xia Yun.

Writing – original draft: Xia Yun.

Writing – review & editing: Xia Yun.

References

1. Clinical Practice Guidelines We Can Trust. In: Editor, editor Institute of Medicine Committee on Standards for Developing Trustworthy Clinical Practice Guidelines; 2011; Port J Nephrol Hypert. Pub Place; 2011.

2. Chen Y, Yang K, Marusic A, Qaseem A, Meerpohl JJ, Flottorp S, et al. A Reporting Tool for Practice Guidelines in Health Care: The RIGHT Statement. *ANN INTERN MED*. 2017; 166(2):128–32. <https://doi.org/10.7326/M16-1565> PMID: 27893062
3. Wu T, Bian Z, Shang H, Li Y. Innovation of clinical trials in China: Commentary on the publication of "CONSORT extension for Chinese herbal medicine formulas 2017: Recommendations, explanation, and elaboration". *J Evid Based Med*. 2017; 10(3):155–62. <https://doi.org/10.1111/jebm.12268> PMID: 28857507
4. Smith M, Burton A, Falkenberg T. World Health Organization Traditional Medicine Strategy 2014–2023. Herbalgram. 2014.
5. Chen YL. The development of reporting standard for health care practice guideline: Lanzhou University; 2015.
6. Yao L, Chen Y, Wang X, Shi X, Wang Y, Guo T, et al. Appraising the quality of clinical practice guidelines in traditional Chinese medicine using AGREE II instrument: A systematic review. *INT J CLIN PRACT*. 2017; 71(2 suppl.).
7. Guidelines IOMU Field MJ, Lohr KN. Clinical Practice Guidelines: Directions for a New Program. *ANN ONCOL*. 1990; 60(9):343–8.
8. Chen KJ, Jiang YR. Current status and problems in developing clinical guidelines for Chinese medicine and integrative medicine. *Journal of Chinese integrative medicine*. 2009; 7(4):301–5. <https://doi.org/10.3736/jcim20090401> PMID: 19361357
9. Wang X, Chen DJ. Scientific and standardized formulation of clinical practice guidelines in line with China's national conditions. *Chin J Obstet Emerg*. 2015; 4:193–5.
10. Chen Y, Yang K, Norris SL. Managing Conflicts of Interest in Practice Guidelines Panels. *JAMA*. 2017; 318(9):866–7.
11. Shaneyfelt TM, Mayo-Smith MF, Rothwangl J. Are guidelines following guidelines? The methodological quality of clinical practice guidelines in the peer-reviewed medical literature. *JAMA*. 1999; 281(20):1900–5. PMID: 10349893
12. Wei ML, M L. Analysis of Clinical Guidelines Developed Based on Evidence in China. *Chin J Evid-based Med*. 2013; 13:927–32.
13. Djulbegovic B, Guyatt GH. Progress in evidence-based medicine: a quarter century on. *LANCET*. 2017; 390(10092):415–23. [https://doi.org/10.1016/S0140-6736\(16\)31592-6](https://doi.org/10.1016/S0140-6736(16)31592-6) PMID: 28215660
14. Sun GR, Zhen HX.: China Press of Traditional Chinese Medicine; 2012.
15. Cheng CW, Wu TX, Shang HC, Li YP, Altman DG, Moher D, et al. CONSORT Extension for Chinese Herbal Medicine Formulas 2017: Recommendations, Explanation, and Elaboration (Traditional Chinese Version). *ANN INTERN MED*. 2017; 167(2):W7–20. https://doi.org/10.7326/IsTranslatedFrom_M17-2977_1 PMID: 28654988